



ARRIVE AT TRUE LUXURY
PENTHOUSES & SKY VILLAS

By Invitation

B3droom
Penthouse





LOCATED AT DUBAI WATER CANAL, ADJACENT TO SAFA PARK.

Casa Canal is located at the center of everything that matters, enjoy family picnics at the lush-green Safa Park and evening walks by the Dubai Water Canal, right next to your signature residence.



ADJACENT TO
SAFA PARK



5 MIN TO DIFC



7 MIN TO BURJ
AL ARAB



7 MIN TO MALL OF THE
EMIRATES



12 MIN TO DUBAI
INTERNATIONAL AIRPORT

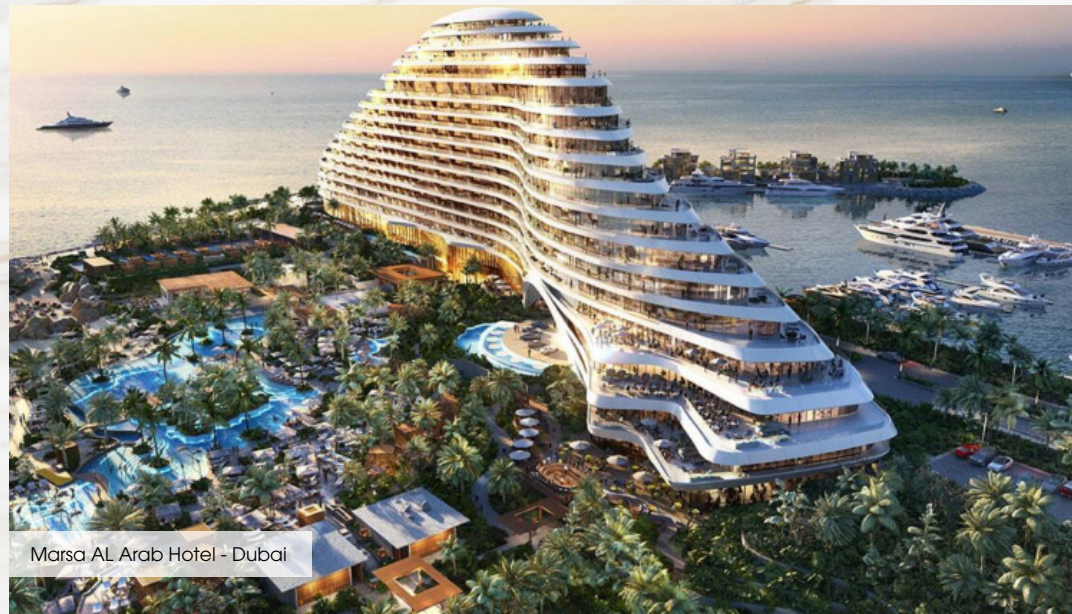


Architecture

By Killa Design. A leading international practice operating within the traditional boundaries of architecture, urbanism, and cultural analysis, Killa Design has distinguished itself as one of the most globally recognized firms of its generation. In all projects, Killa Design strives to go beyond the standard solution, redefine typologies, and invent new possibilities for content and everyday use.



Museum of the Future - Dubai



Marsa AL Arab Hotel - Dubai



Address Beach Resort - Dubai

Interiors

HBA Residential creates distinctive, sophisticated and sublime environments for private villas, penthouses, luxury buildings, and houses for the world's most distinguished individuals. Paying close attention to form and function Graphics combines beauty and purpose with a synergy that is timeless.



The St. Regis - Dubai



Four Seasons - Singapore



Mandarin Oriental - Beijing

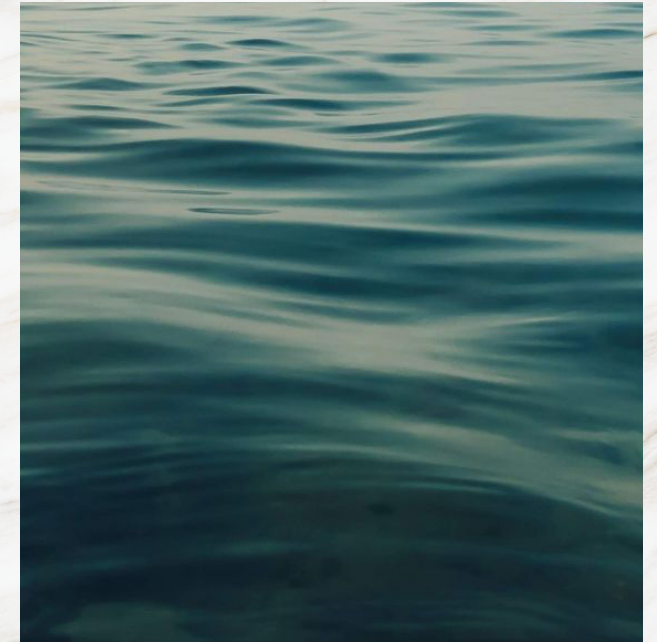


Feel the soothing embrace of nature as the wind whispers through the trees, creating a symphony of melodies that serenade your senses.



Inspired by the gentle curves and undulating waves of nature.

Bringing to life the concept of "Villas in the sky. Inspired by the smooth and rhythmic curves of Dubai Water Canal waves. With distinctive features such as infinity edge pools, double height volumes, large terraces.



The Residence aims to create a new standard of luxury living, and to make a lasting imprint.

ELEVATED EXCELLENCE



*Where Luxury Meets Sky-High
Living Standards*



ONE UNIQUE STORY

A stunning collection of 3 Bedroom Penthouses

Bringing to life the concept of "Villas in the sky".

Inspired by the smooth and rhythmic curves of the Ocean waves. With distinctive features such as infinity edge pools, double height volumes, large terraces. The Residence aims to create a new standard of luxury living, and to make a lasting imprint.

B3droom
Penthouse



*Your Oasis of
Calm and Serenity*



B3droom
Penthouse



Living areas are set along
the waterfront maximizing striking
Dubai Water Canal & Down Town's Skyline views

*With Stunning
Views*

B3droom
Penthouse





Unmatched Elegance

The floor to ceiling curved glass windows are adding vertical volume and space to every room.

B3droom
Penthouse





Panoramic Safa Park View

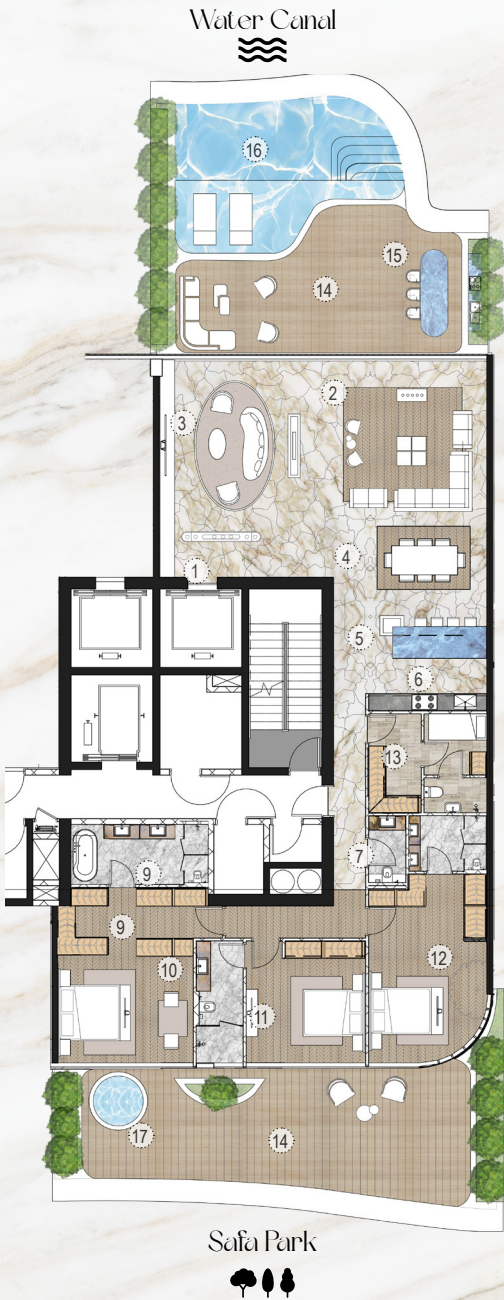
En-suite, luxurious
bathrooms feature his
and her split vanities with
an oversized travertine
shower and free-standing
sculptural tub.

B3droom
Penthouse



Legend

- 1. Entrance Foyer
- 2. Family Living
- 3. Formal Living
- 4. Formal Dining
- 5. Show Kitchen
- 6. Wet Kitchen
- 7. Powder Room
- 8. Mastersuite Walk In Closet
- 9. Mastersuite Bathroom
- 10. Mastersuite Bedroom
- 11. Guestsuite 1
- 12. Guestsuite 2
- 13. Staff Quarter
- 14. Outdoor Terrace
- 15. Tepenyaki
- 16. Pool
- 17. Jacuzzi



Layouts

FLOOR MAPPING	
FLOOR	MAP
1 st	
12 th	

B3droom
Penthouse
Type A

Legend

- 1. Entrance Foyer
- 2. Family Living
- 3. Formal Living
- 4. Formal Dining
- 5. Show Kitchen
- 6. Breakfast Nook
- 7. Wet Kitchen
- 8. Powder Room
- 9. Mastersuite Walk In Closet
- 10. Mastersuite Bathroom
- 11. Mastersuite Bedroom
- 12. Guestsuite 1
- 13. Guestsuite 2
- 14. Staff Quarter
- 15. Outdoor Terrace
- 16. Tepenyaki
- 17. Pool
- 18. Jacuzzi
- 19. Sunken



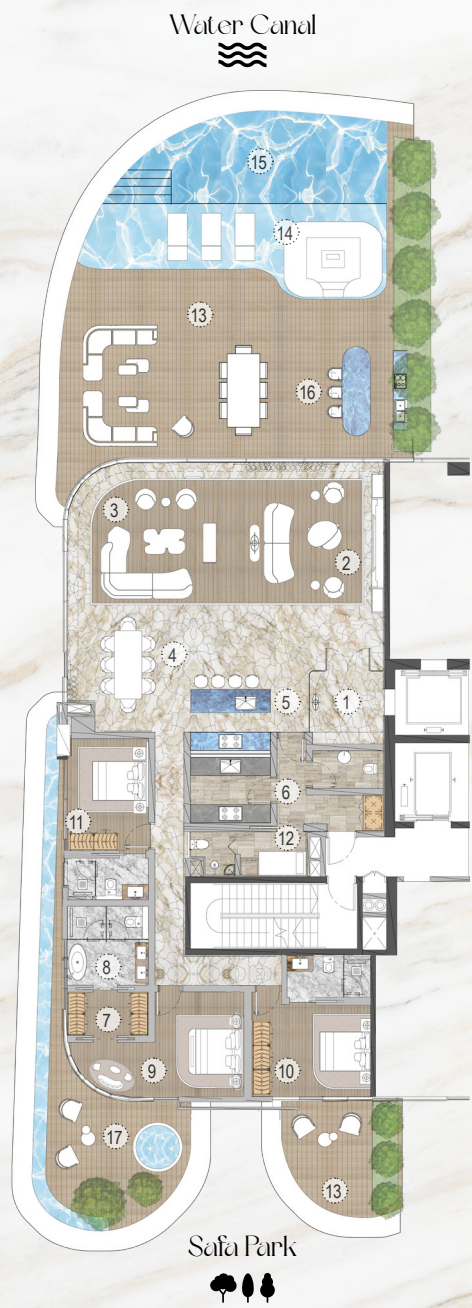
Layouts

FLOOR MAPPING	
FLOOR	MAP
1 st	
2 nd	
3 rd	
4 th	
5 th	
6 th	
8 th	
9 th	
10 th	
11 th	
12 th	

B3droom
Penthouse
Type B

Legend

- 1. Entrance Foyer
- 2. Family Living
- 3. Formal Living
- 4. Formal Dining
- 5. Show Kitchen
- 6. Wet Kitchen
- 7. Mastersuite Walk In Closet
- 8. Mastersuite Bathroom
- 9. Mastersuite Bedroom
- 10. Guestsuite 1
- 11. Guestsuite 2
- 12. Staff Quarter
- 13. Outdoor Terrace
- 14. Sunken
- 15. Pool
- 16. Tepenyaki
- 17. Jacuzzi



Layouts

FLOOR MAPPING	
FLOOR	MAP
4th	

B3droom
Penthouse
Type C

Unit Details

Type A

3 Bedrooms | 5 Bathrooms | 2 Parking Spaces

	From		To	
Residences	2,636 Sq.Ft.	245 Sq.M.	2,638 Sq.Ft.	245 Sq.M.
Terrace	2,016 Sq.Ft.	187 Sq.M.	2,016 Sq.Ft.	187 Sq.M.
Total	4,652 Sq.Ft.	432 Sq.M.	4,654 Sq.Ft.	432 Sq.M.

Type B

3 Bedrooms | 5 Bathrooms | 2 Parking Spaces

	From		To	
Residences	2,776 Sq.Ft.	258 Sq.M.	2,776 Sq.Ft.	258 Sq.M.
Terrace	1,825 Sq.Ft.	170 Sq.M.	1,863 Sq.Ft.	173 Sq.M.
Total	4,601 Sq.Ft.	428 Sq.M.	4,639 Sq.Ft.	431 Sq.M.

Type C

3 Bedrooms | 5 Bathrooms | 2 Parking Spaces

	From		To	
Residences	2,905 Sq.Ft.	270 Sq.M.	2,905 Sq.Ft.	270 Sq.M.
Terrace	2,302 Sq.Ft.	214 Sq.M.	2,442 Sq.Ft.	227 Sq.M.
Total	5,207 Sq.Ft.	484 Sq.M.	5,347 Sq.Ft.	497 Sq.M.



RESIDENCE FEATURES

- Casa Canal Residences comprising of Penthouses, Sky Villas, Sky Mansions, 2 Sky Palazzos and 3 Sky Palaces
- Sizes ranging from 4,601 sq. Ft. To 28,209 sq. Ft.
- All residences with stunning Water Canal and Safa Park views
- Private elevators, that opens directly in your living room
- Opulent spaces with ceiling height from 4.5 Meters to 9 Meters
- Exclusive membership to a world class golf course
- 24/7 Dedicated world wide concierge app by Lujo
- Personal parking spaces in fully enclosed garage
- Electric vehicle charging stations and bicycle storage
- Secured individual residential storage space
- Expected delivery Q4, 2025

EXCLUSIVE AMENITIES



24 x 7 Luxury Concierge Service



Screening Room



Breakfast & Cafe Lounge



Dedicated Concierge App



Cigar Lounge



Sushi Omakase Counter



Dedicated Chauffeur Service



Indoor Pool & Pool Lounge



Residents Lounge



CASA CANAL

An Unparalleled Quality of Life



INFO@AHS-PROPERTIES.COM | +971 (4) 4581821

SALES CENTRE - AHS PROPERTIES, HAPPINESS STREET, CITY WALK - UNIT 2, BUILDING 5, DUBAI, UAE. P.O. BOX: 2195

📱 AHS.PROPERTIES | AHS-PROPERTIES.COM