



CREEK BEACH

ROSEWATER

FLOOR PLANS

BUILDING 3

EMAAR

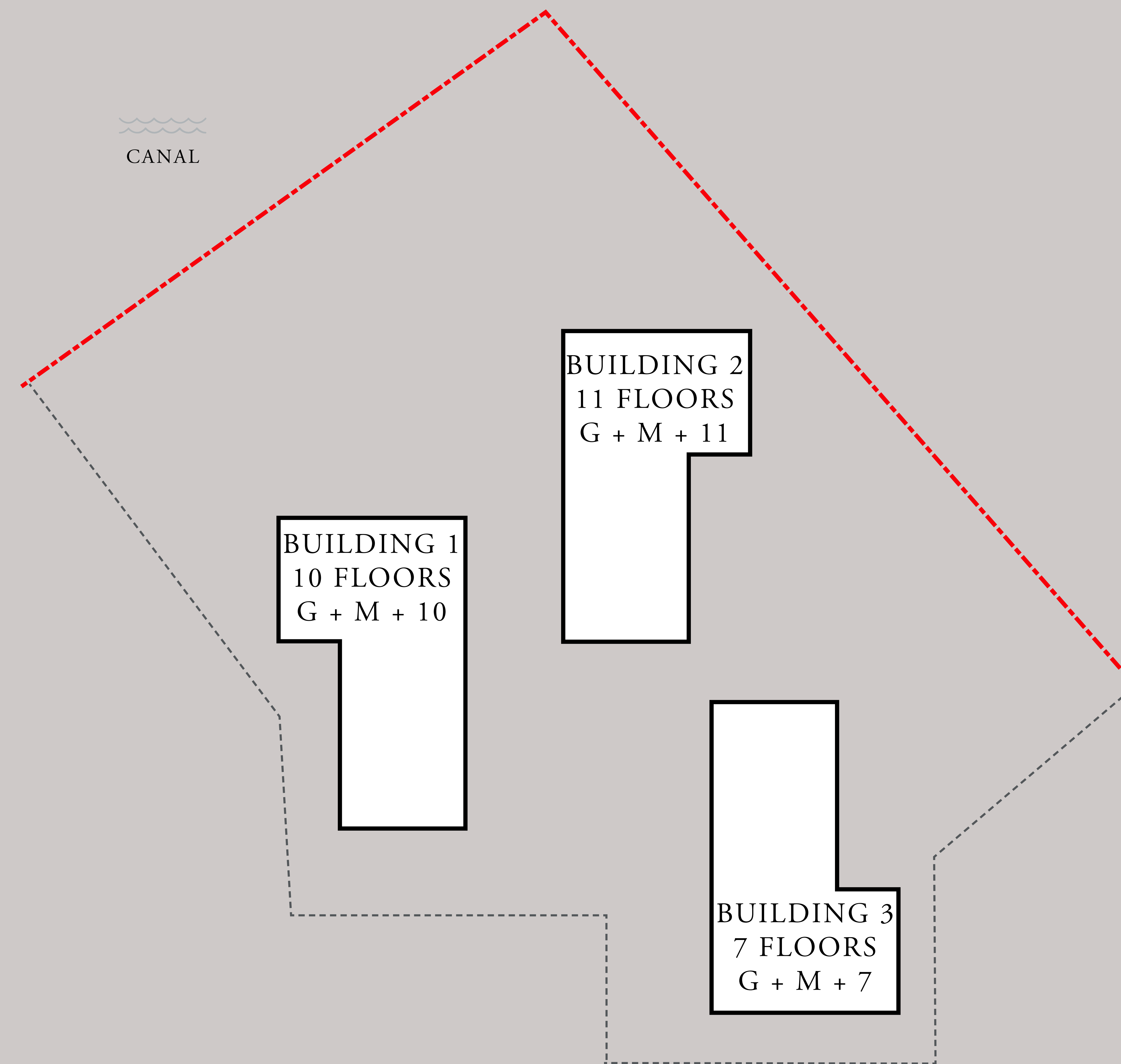


DUBAI CREEK HARBOUR

CREEK BEACH

ROSEWATER

MASSING PLAN



FLOOR PLAN 1. All dimensions are in imperial and metric, and measured from finish to finish excluding construction tolerances. 2. All materials, dimensions, and drawings are approximate only. 3. Information is subject to change without notice, at developer's absolute discretion. 4. Actual area may vary from the stated area. 5. Drawings not to scale. 6. All images used are for illustrative purposes only and do not represent the actual size, features, specifications, fittings, and furnishings. 7. The developer reserves the right to make revisions / alterations, at it's absolute discretion, without any liability whatsoever.

EMAAR

CREEK BEACH

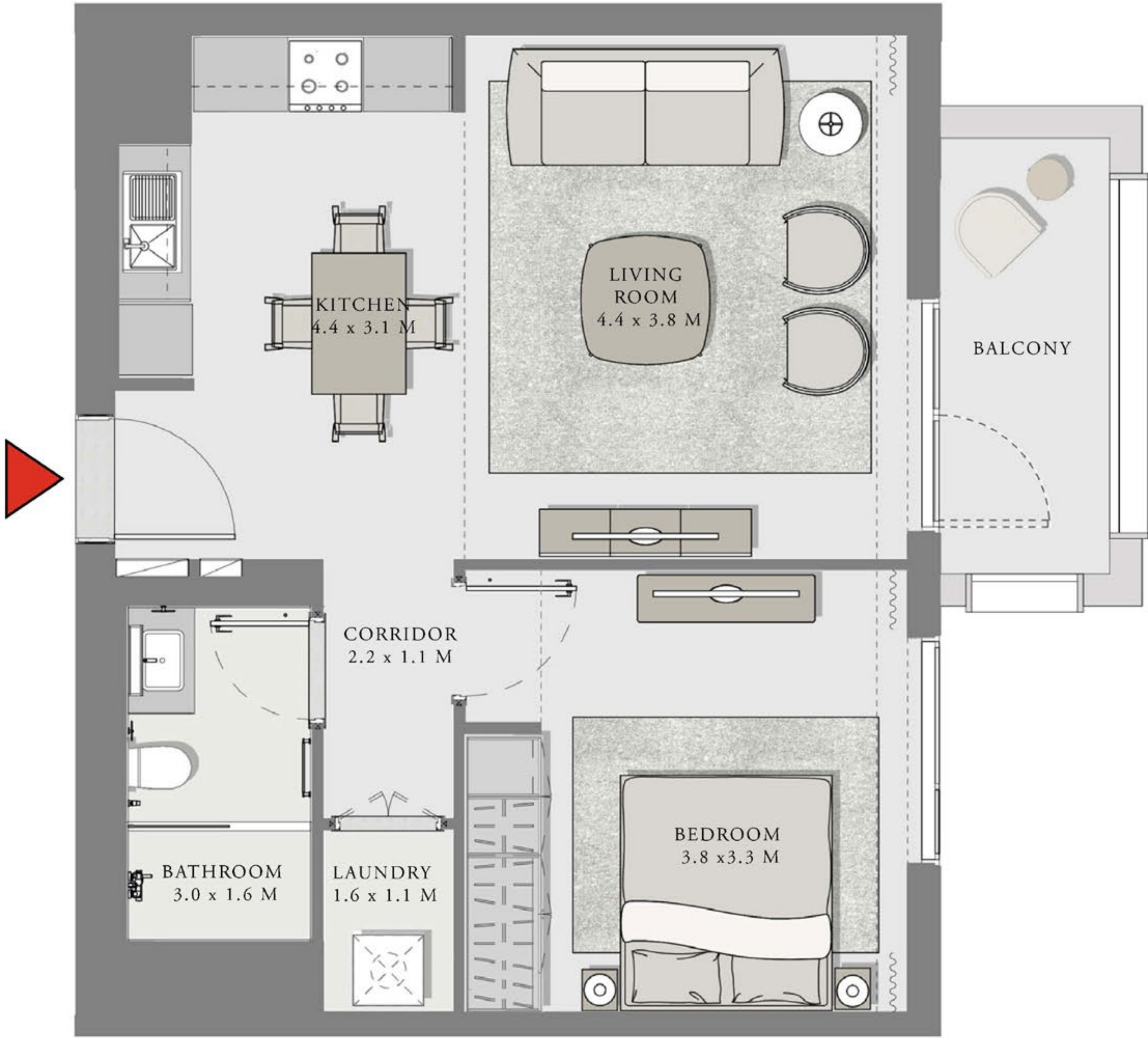
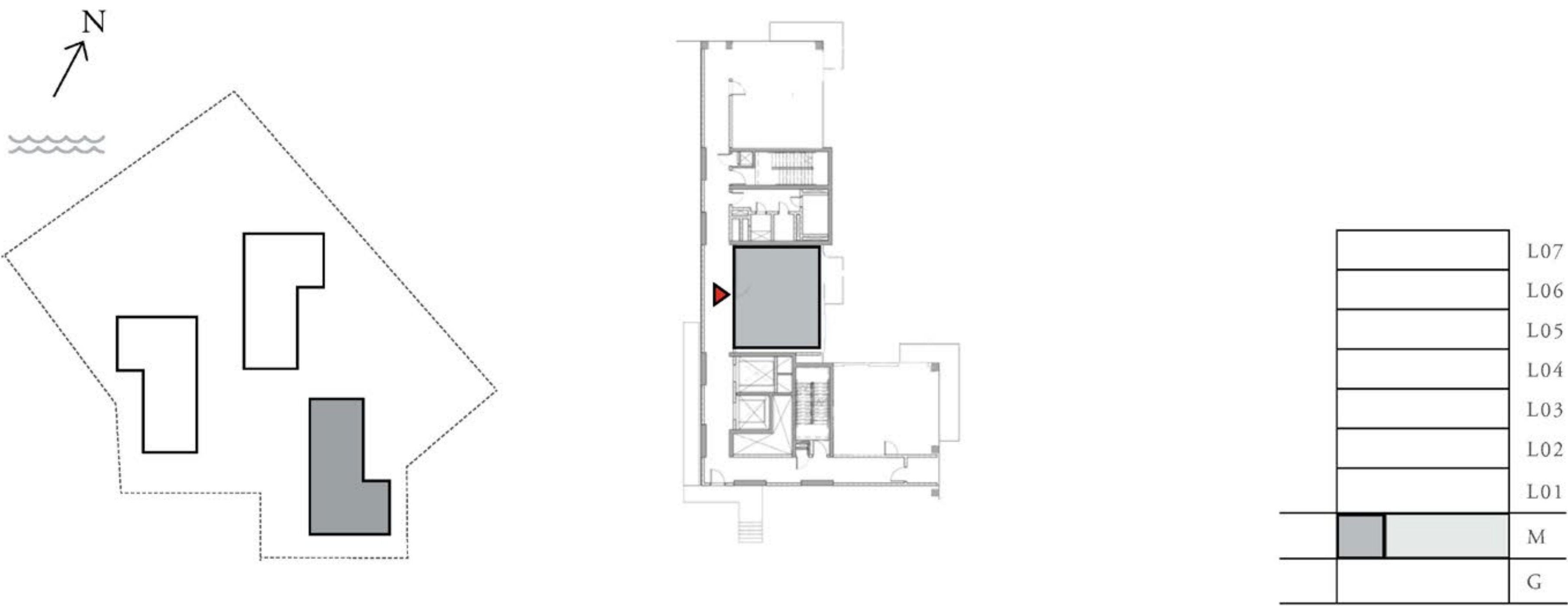
ROSEWATER

BUILDING 3

1 BEDROOM

UNIT 02 MEZZANINE LEVEL

APARTMENT AREA	645.08 SQ.FT.	59.93 SQ.M.
BALCONY AREA	67.27 SQ.FT.	6.25 SQ.M.
TOTAL AREA	712.35 SQ.FT.	66.18 SQ.M.



FLOOR PLAN 1. All dimensions are in imperial and metric, and measured from finish to finish excluding construction tolerances. 2. All materials, dimensions, and drawings are approximate only. 3. Information is subject to change without notice, at developer's absolute discretion. 4. Actual area may vary from the stated area. 5. Drawings not to scale. 6. All images used are for illustrative purposes only and do not represent the actual size, features, specifications, fittings, and furnishings. 7. The developer reserves the right to make revisions / alterations, at it's absolute discretion, without any liability whatsoever.

CREEK BEACH

ROSEWATER

BUILDING 3

1 BEDROOM

UNIT 03 MEZZANINE LEVEL

APARTMENT AREA	644.11 SQ.FT.	59.84 SQ.M.
BALCONY AREA	139.82 SQ.FT.	12.99 SQ.M.
TOTAL AREA	783.94 SQ.FT.	72.83 SQ.M.



FLOOR PLAN 1. All dimensions are in imperial and metric, and measured from finish to finish excluding construction tolerances. 2. All materials, dimensions, and drawings are approximate only. 3. Information is subject to change without notice, at developer's absolute discretion. 4. Actual area may vary from the stated area. 5. Drawings not to scale. 6. All images used are for illustrative purposes only and do not represent the actual size, features, specifications, fittings, and furnishings. 7. The developer reserves the right to make revisions / alterations, at it's absolute discretion, without any liability whatsoever.

CREEK BEACH

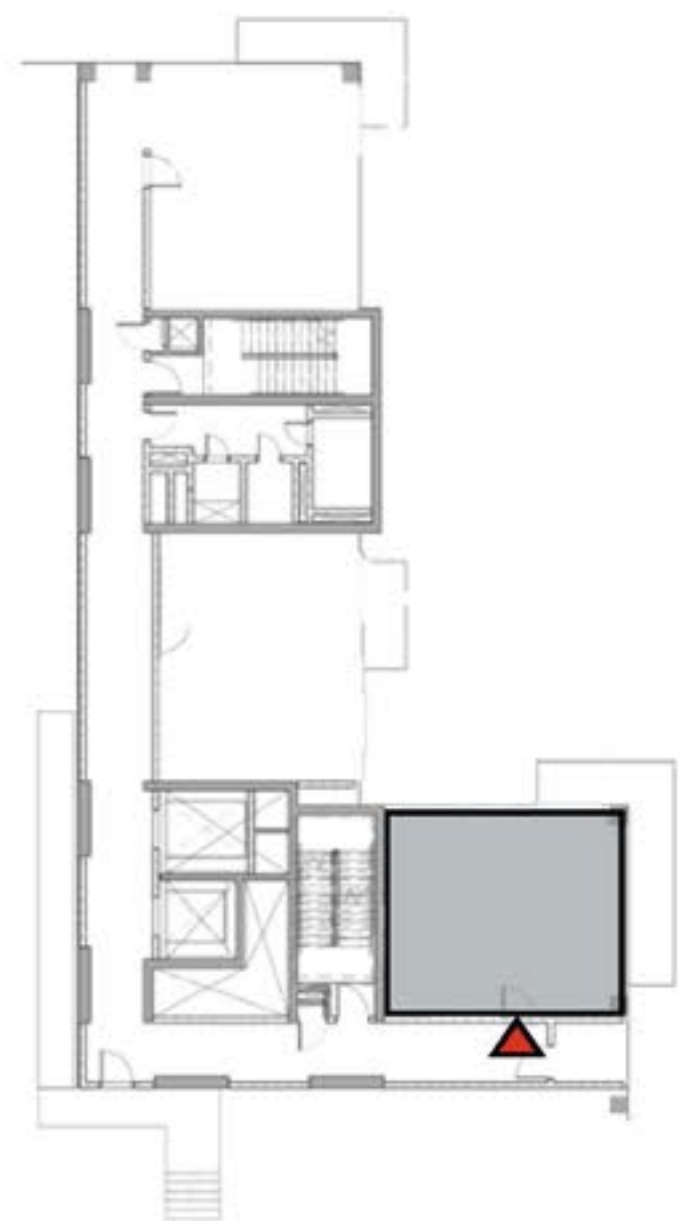
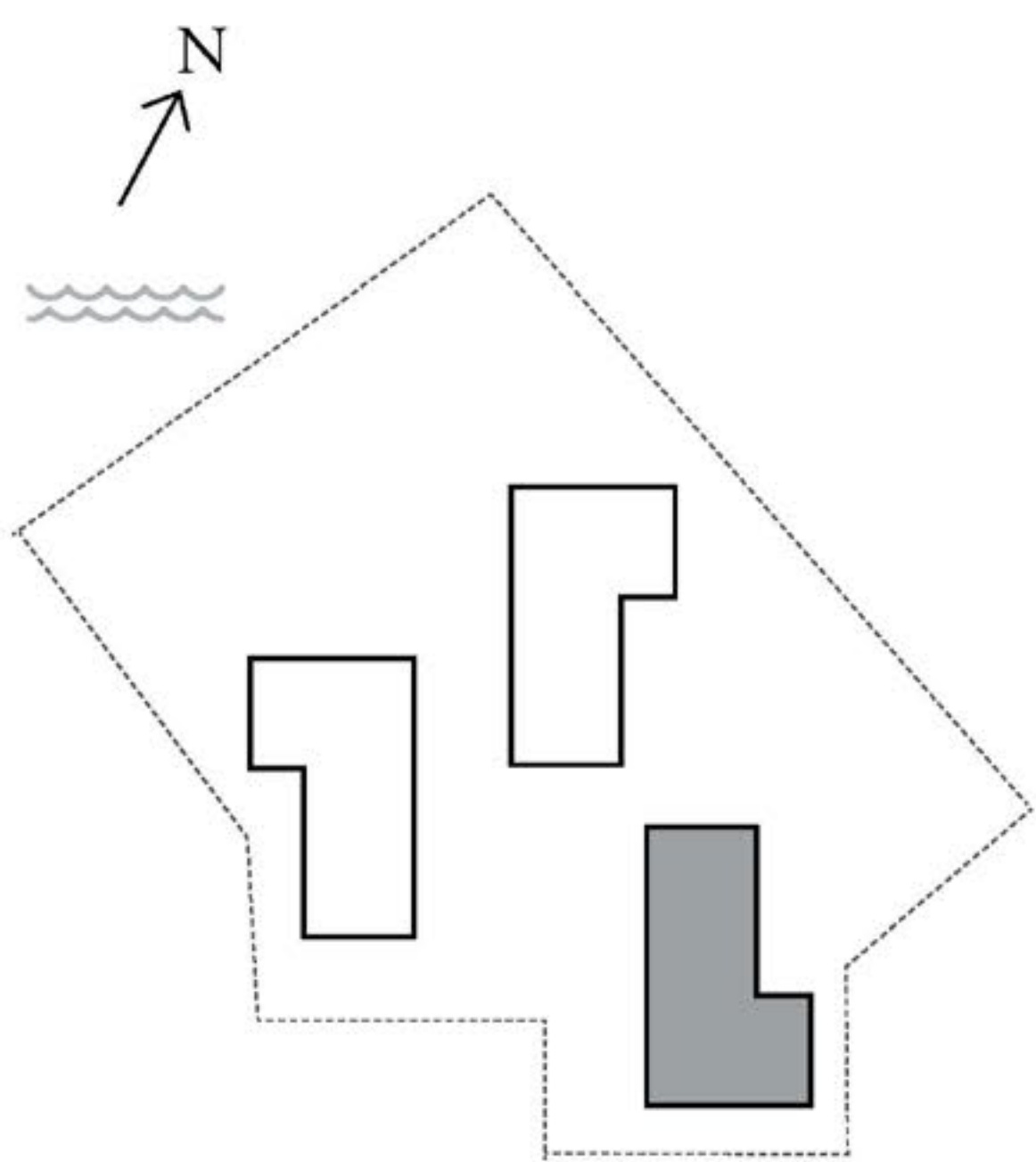
ROSEWATER

BUILDING 3

1 BEDROOM

UNIT 01 MEZZANINE LEVEL

APARTMENT AREA	625.18 SQ.FT.	58.19 SQ.M.
BALCONY AREA	187.83 SQ.FT.	17.41 SQ.M.
TOTAL AREA	813.64 SQ.FT.	75.60 SQ.M.



	L07
	L06
	L05
	L04
	L03
	L02
	L01
	M
	G



FLOOR PLAN 1. All dimensions are in imperial and metric, and measured from finish to finish excluding construction tolerances. 2. All materials, dimensions, and drawings are approximate only. 3. Information is subject to change without notice, at developer's absolute discretion. 4. Actual area may vary from the stated area. 5. Drawings not to scale. 6. All images used are for illustrative purposes only and do not represent the actual size, features, specifications, fittings, and furnishings. 7. The developer reserves the right to make revisions / alterations, at it's absolute discretion, without any liability whatsoever.

CREEK BEACH

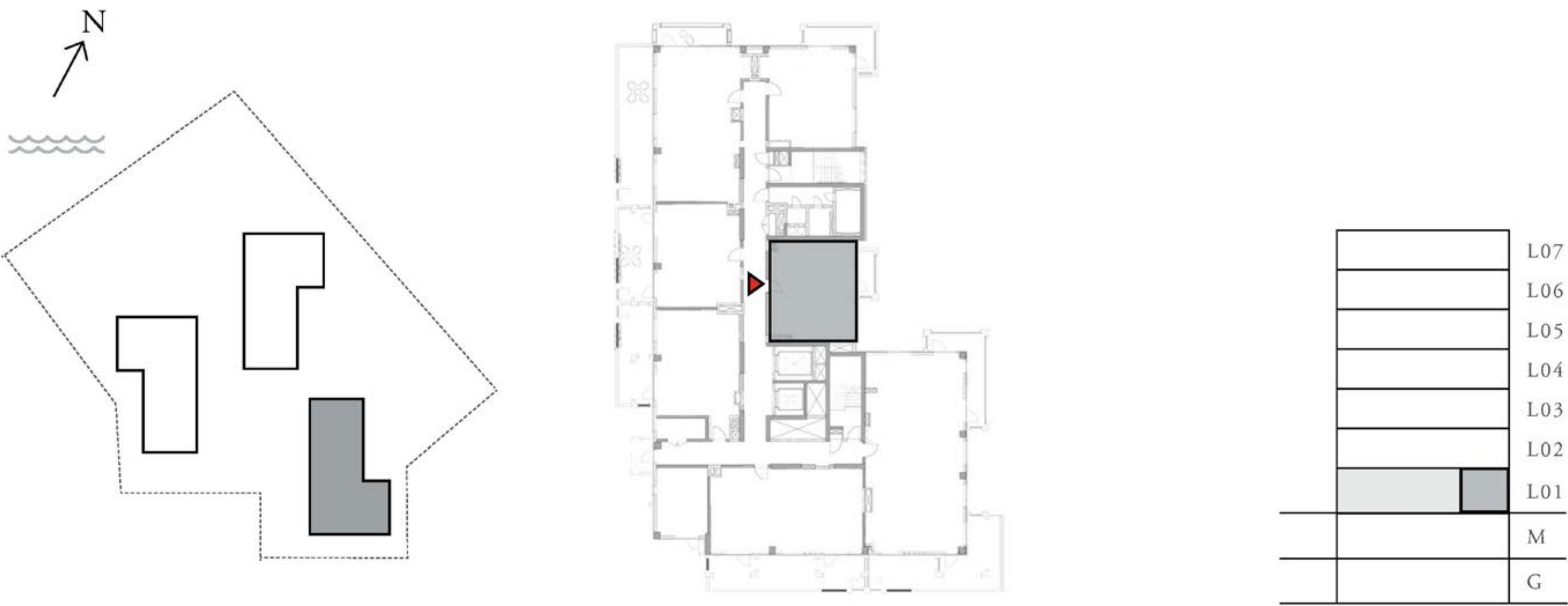
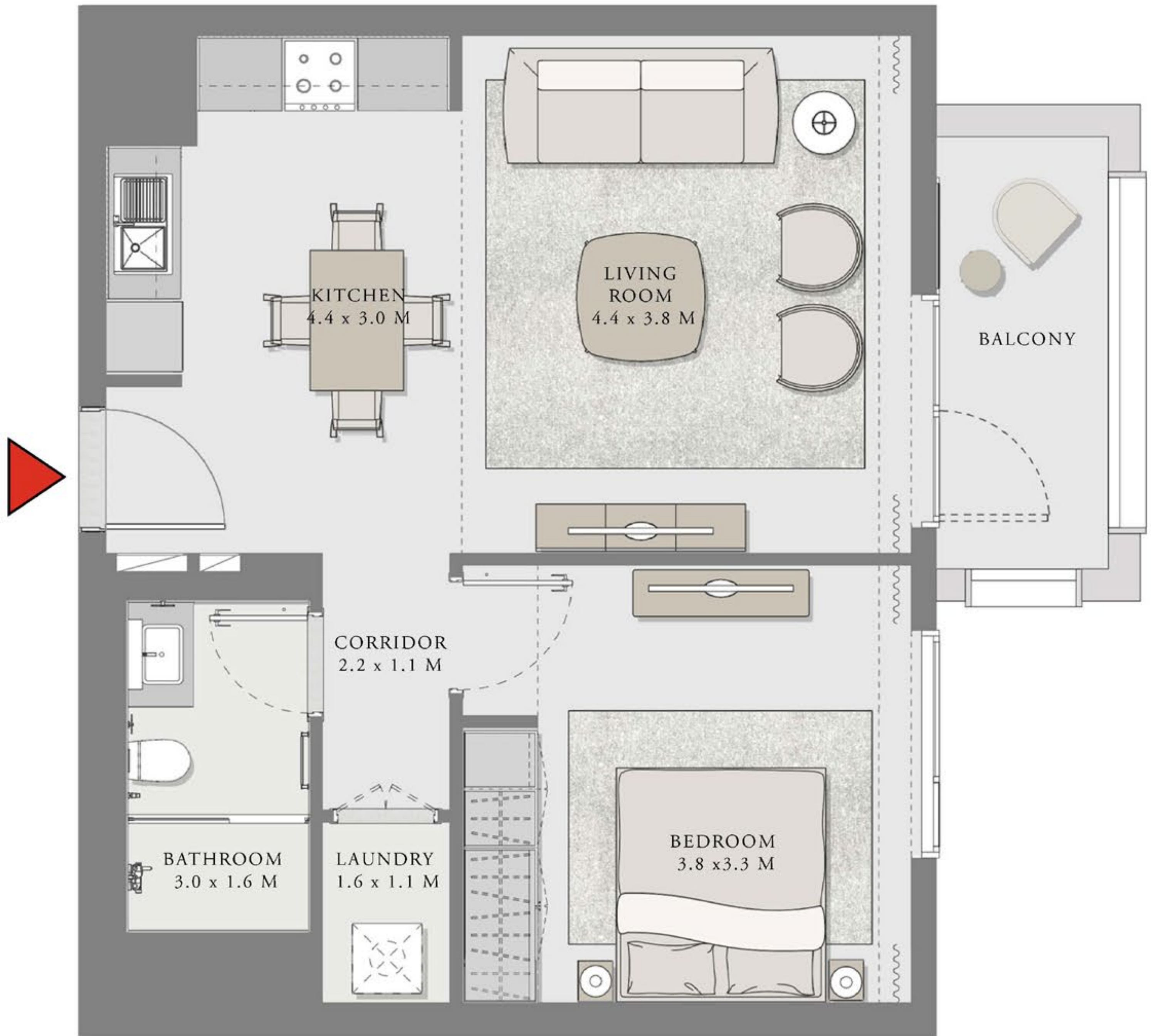
ROSEWATER

BUILDING 3

1 BEDROOM

UNIT 01 LEVEL 01

APARTMENT AREA	645.73 SQ.FT.	59.93 SQ.M.
BALCONY AREA	67.27 SQ.FT.	6.25 SQ.M.
TOTAL AREA	713.00 SQ.FT.	66.1 SQ.M.



FLOOR PLAN 1. All dimensions are in imperial and metric, and measured from finish to finish excluding construction tolerances. 2. All materials, dimensions, and drawings are approximate only. 3. Information is subject to change without notice, at developer's absolute discretion. 4. Actual area may vary from the stated area. 5. Drawings not to scale. 6. All images used are for illustrative purposes only and do not represent the actual size, features, specifications, fittings, and furnishings. 7. The developer reserves the right to make revisions / alterations, at it's absolute discretion, without any liability whatsoever.

CREEK BEACH

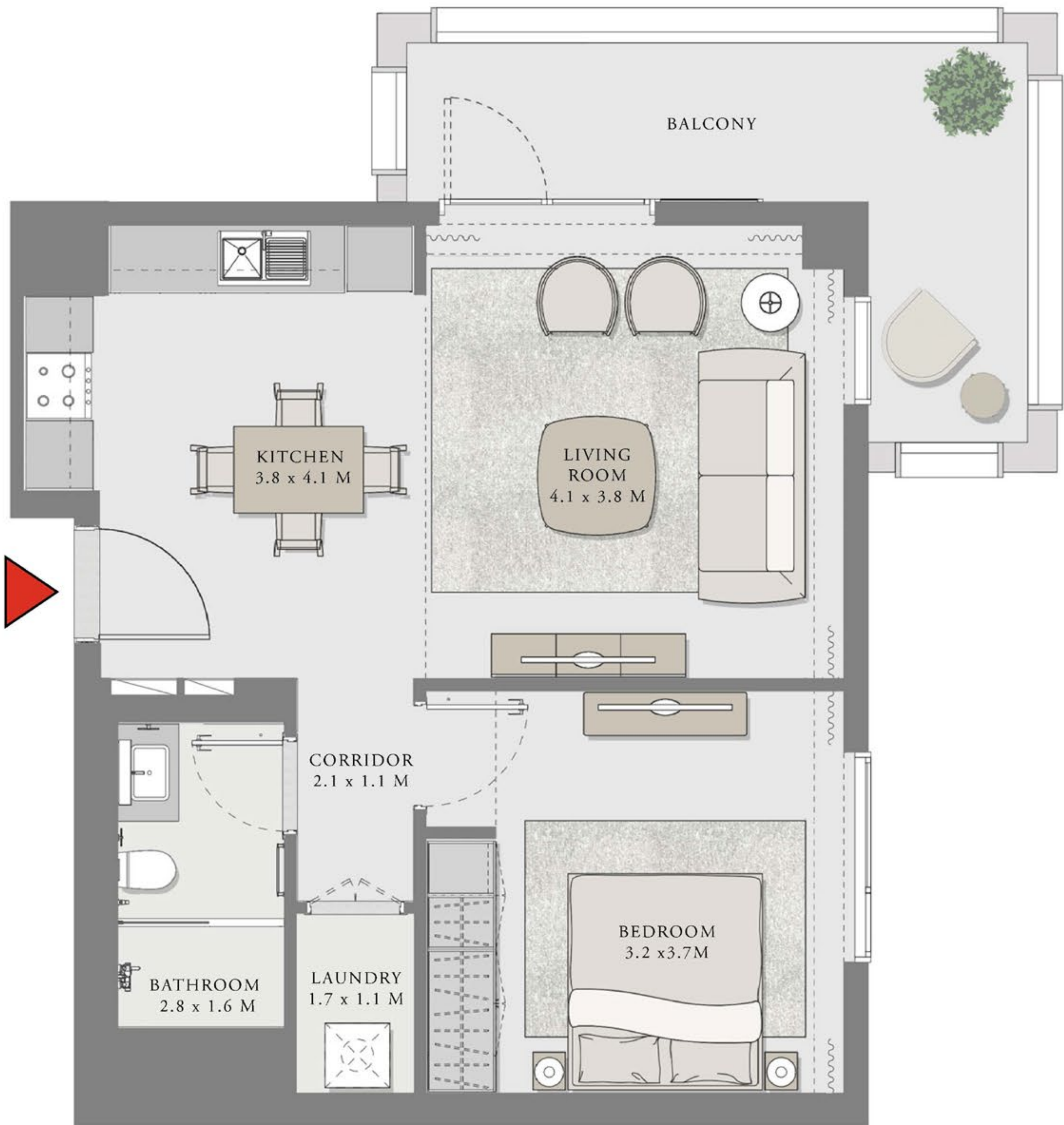
ROSEWATER

BUILDING 3

1 BEDROOM

UNIT 02 LEVEL 01

APARTMENT AREA	645.62 SQ.FT.	59.84 SQ.M.
BALCONY AREA	139.82 SQ.FT.	12.99 SQ.M.
TOTAL AREA	785.44 SQ.FT.	72.83 SQ.M.



FLOOR PLAN 1. All dimensions are in imperial and metric, and measured from finish to finish excluding construction tolerances. 2. All materials, dimensions, and drawings are approximate only. 3. Information is subject to change without notice, at developer's absolute discretion. 4. Actual area may vary from the stated area. 5. Drawings not to scale. 6. All images used are for illustrative purposes only and do not represent the actual size, features, specifications, fittings, and furnishings. 7. The developer reserves the right to make revisions / alterations, at it's absolute discretion, without any liability whatsoever.

CREEK BEACH

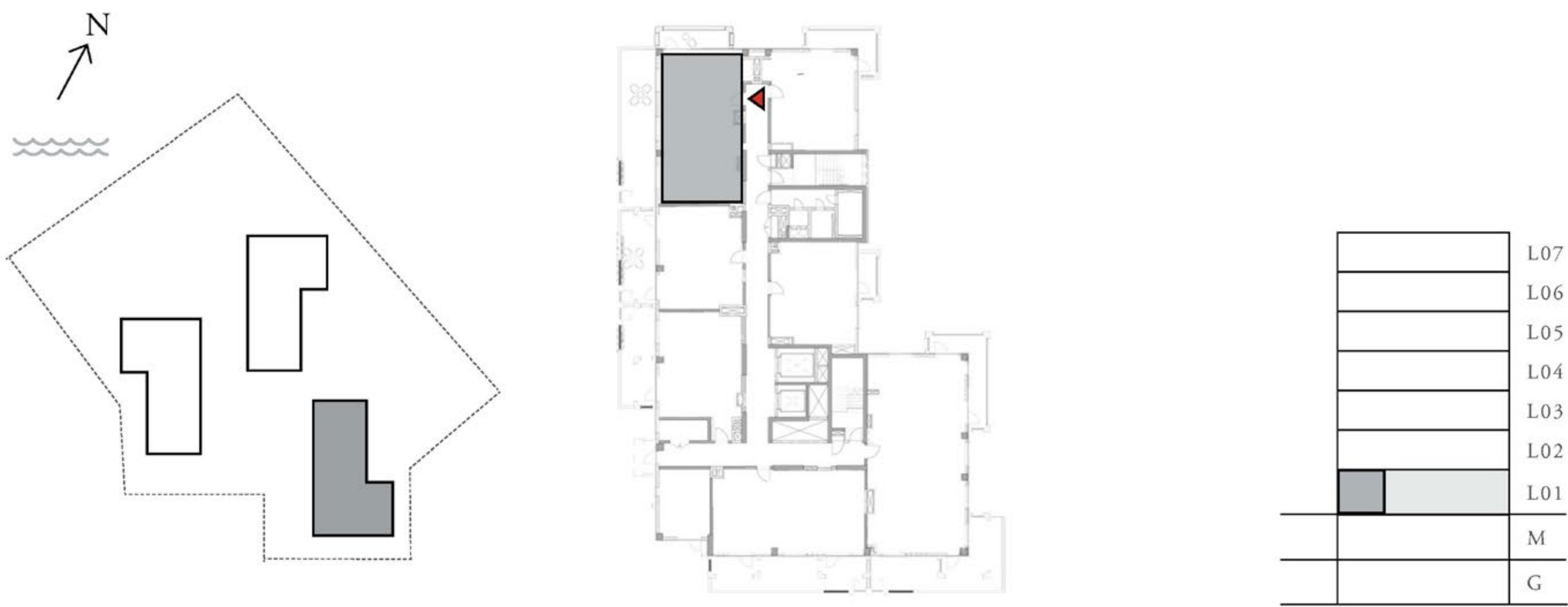
ROSEWATER

BUILDING 3

2 BEDROOM

UNIT 03 LEVEL 01

APARTMENT AREA	986.30 SQ.FT.	91.63 SQ.M.
BALCONY AREA	526.79 SQ.FT.	48.94 SQ.M.
TOTAL AREA	1513.09 SQ.FT.	140.57 SQ.M.



FLOOR PLAN 1. All dimensions are in imperial and metric, and measured from finish to finish excluding construction tolerances. 2. All materials, dimensions, and drawings are approximate only. 3. Information is subject to change without notice, at developer's absolute discretion. 4. Actual area may vary from the stated area. 5. Drawings not to scale. 6. All images used are for illustrative purposes only and do not represent the actual size, features, specifications, fittings, and furnishings. 7. The developer reserves the right to make revisions / alterations, at it's absolute discretion, without any liability whatsoever.

CREEK BEACH

ROSEWATER

BUILDING 3

1 BEDROOM

UNIT 04 LEVEL 01

APARTMENT AREA	649.60 SQ.FT.	60.35 SQ.M.
BALCONY AREA	251.66 SQ.FT.	23.38 SQ.M.
TOTAL AREA	901.26 SQ.FT.	83.73 SQ.M.



FLOOR PLAN 1. All dimensions are in imperial and metric, and measured from finish to finish excluding construction tolerances. 2. All materials, dimensions, and drawings are approximate only. 3. Information is subject to change without notice, at developer's absolute discretion. 4. Actual area may vary from the stated area. 5. Drawings not to scale. 6. All images used are for illustrative purposes only and do not represent the actual size, features, specifications, fittings, and furnishings. 7. The developer reserves the right to make revisions / alterations, at it's absolute discretion, without any liability whatsoever.

CREEK BEACH

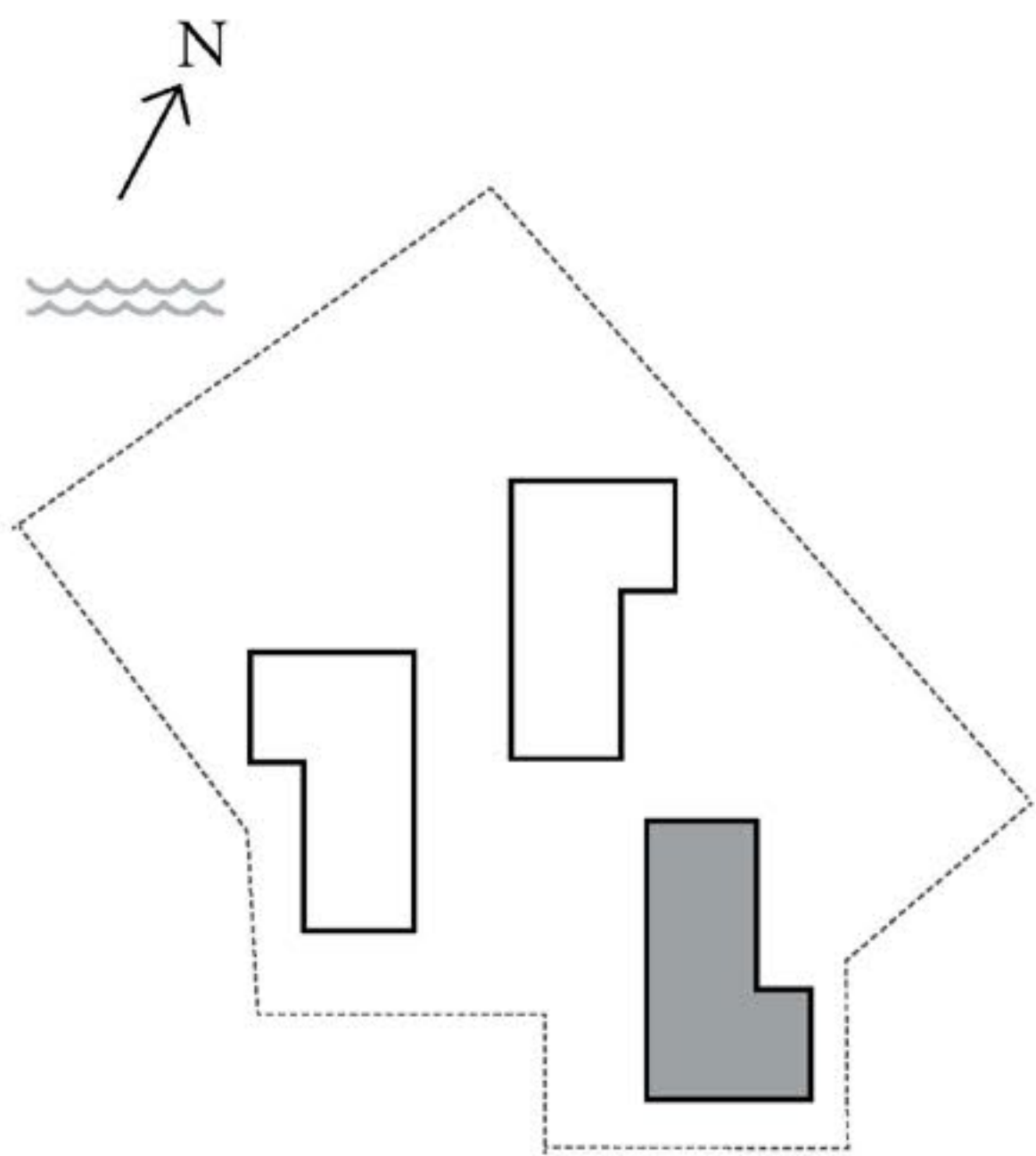
ROSEWATER

BUILDING 3

1 BEDROOM

UNIT 05 LEVEL 01

APARTMENT AREA	716.34 SQ.FT.	66.55 SQ.M.
BALCONY AREA	267.27 SQ.FT.	24.83 SQ.M.
TOTAL AREA	983.61 SQ.FT.	91.38 SQ.M.



	L07
	L06
	L05
	L04
	L03
	L02
	L01
	M
	G



FLOOR PLAN 1. All dimensions are in imperial and metric, and measured from finish to finish excluding construction tolerances. 2. All materials, dimensions, and drawings are approximate only. 3. Information is subject to change without notice, at developer's absolute discretion. 4. Actual area may vary from the stated area. 5. Drawings not to scale. 6. All images used are for illustrative purposes only and do not represent the actual size, features, specifications, fittings, and furnishings. 7. The developer reserves the right to make revisions / alterations, at it's absolute discretion, without any liability whatsoever.

CREEK BEACH

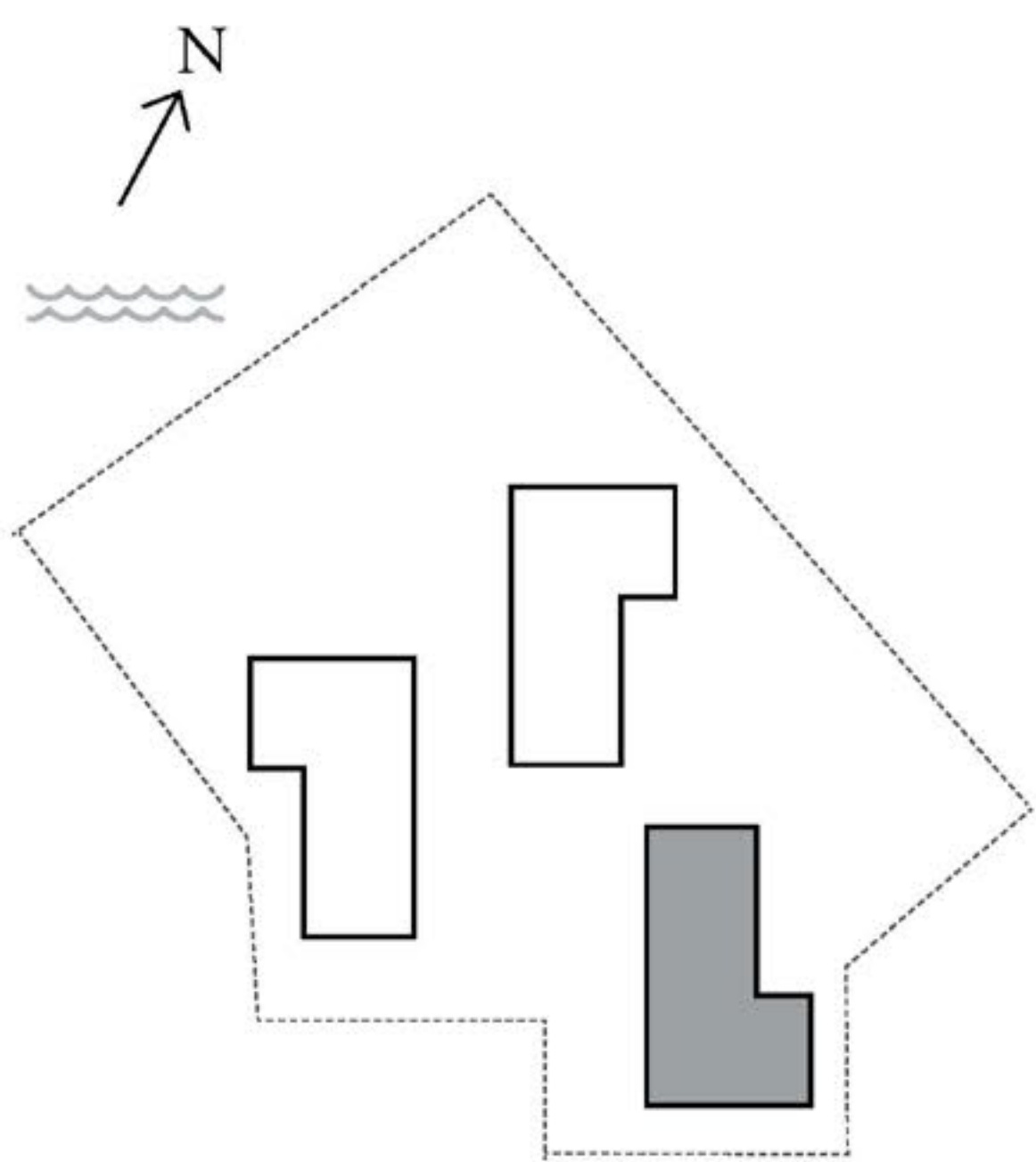
ROSEWATER

BUILDING 3

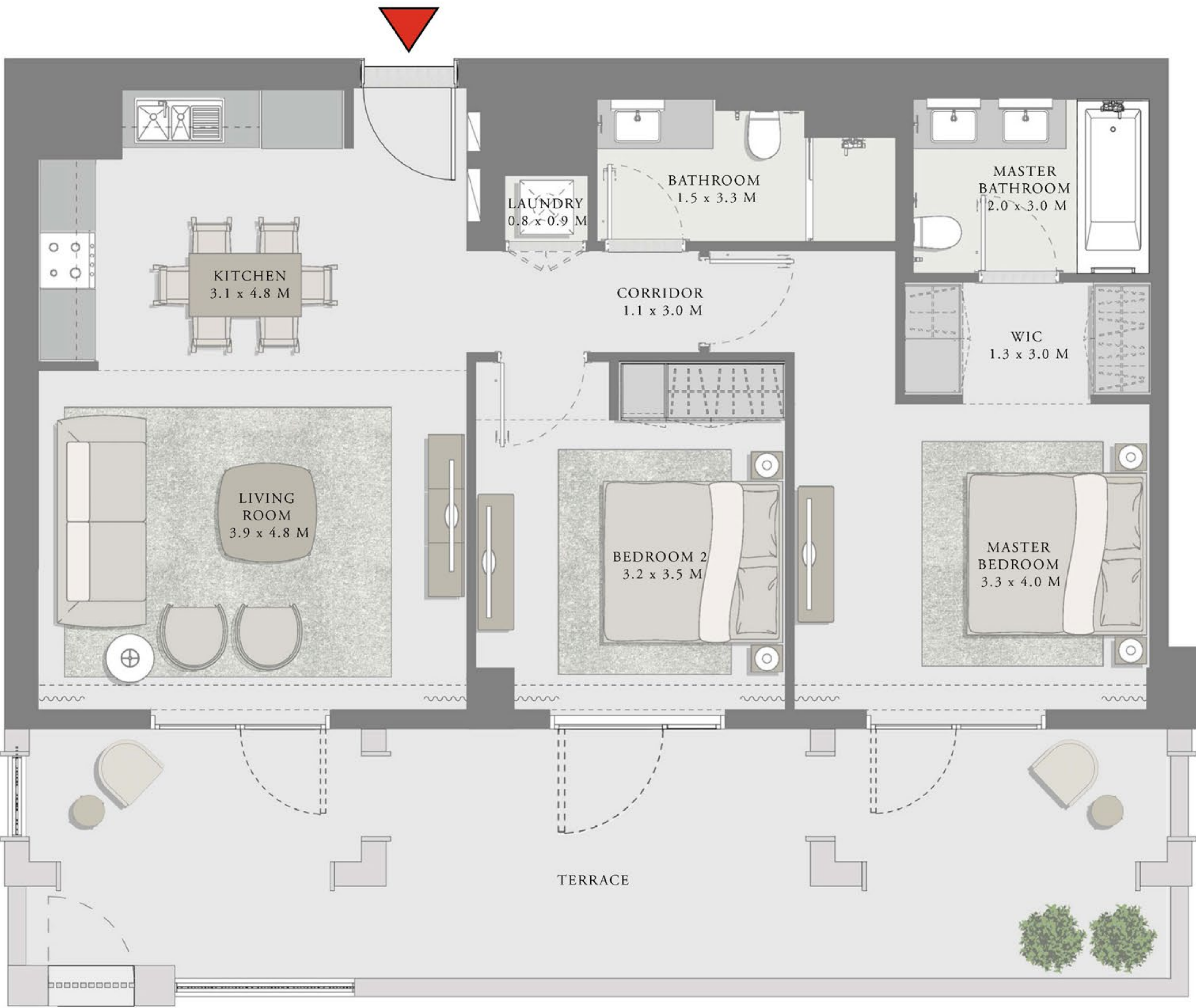
2 BEDROOM

UNIT 06 LEVEL 01

APARTMENT AREA	954.44 SQ.FT.	88.67 SQ.M.
BALCONY AREA	407.74 SQ.FT.	37.88 SQ.M.
TOTAL AREA	1362.18 SQ.FT.	126.55 SQ.M.



	L07
	L06
	L05
	L04
	L03
	L02
	L01
	M
	G



FLOOR PLAN 1. All dimensions are in imperial and metric, and measured from finish to finish excluding construction tolerances. 2. All materials, dimensions, and drawings are approximate only. 3. Information is subject to change without notice, at developer's absolute discretion. 4. Actual area may vary from the stated area. 5. Drawings not to scale. 6. All images used are for illustrative purposes only and do not represent the actual size, features, specifications, fittings, and furnishings. 7. The developer reserves the right to make revisions / alterations, at it's absolute discretion, without any liability whatsoever.

CREEK BEACH

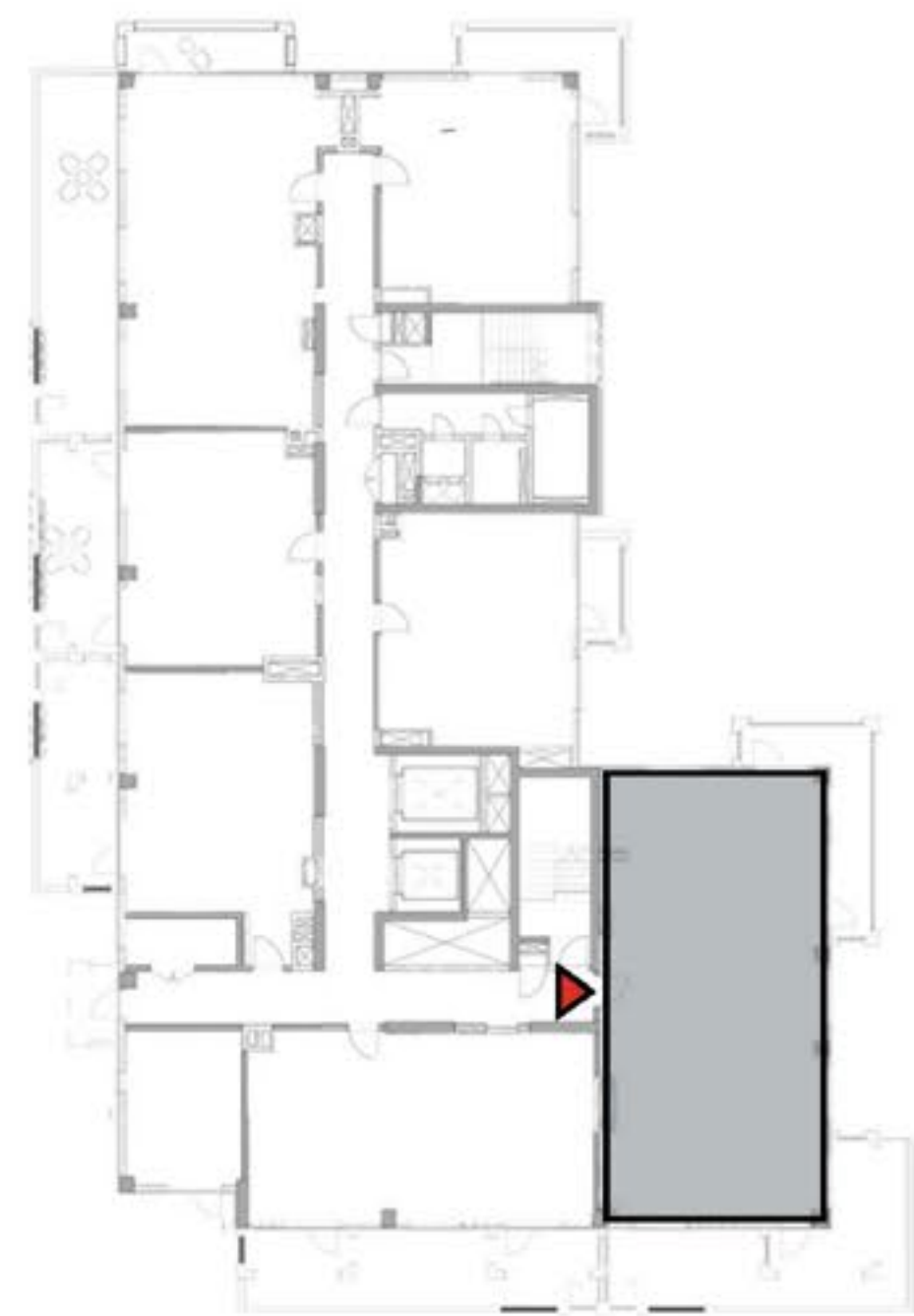
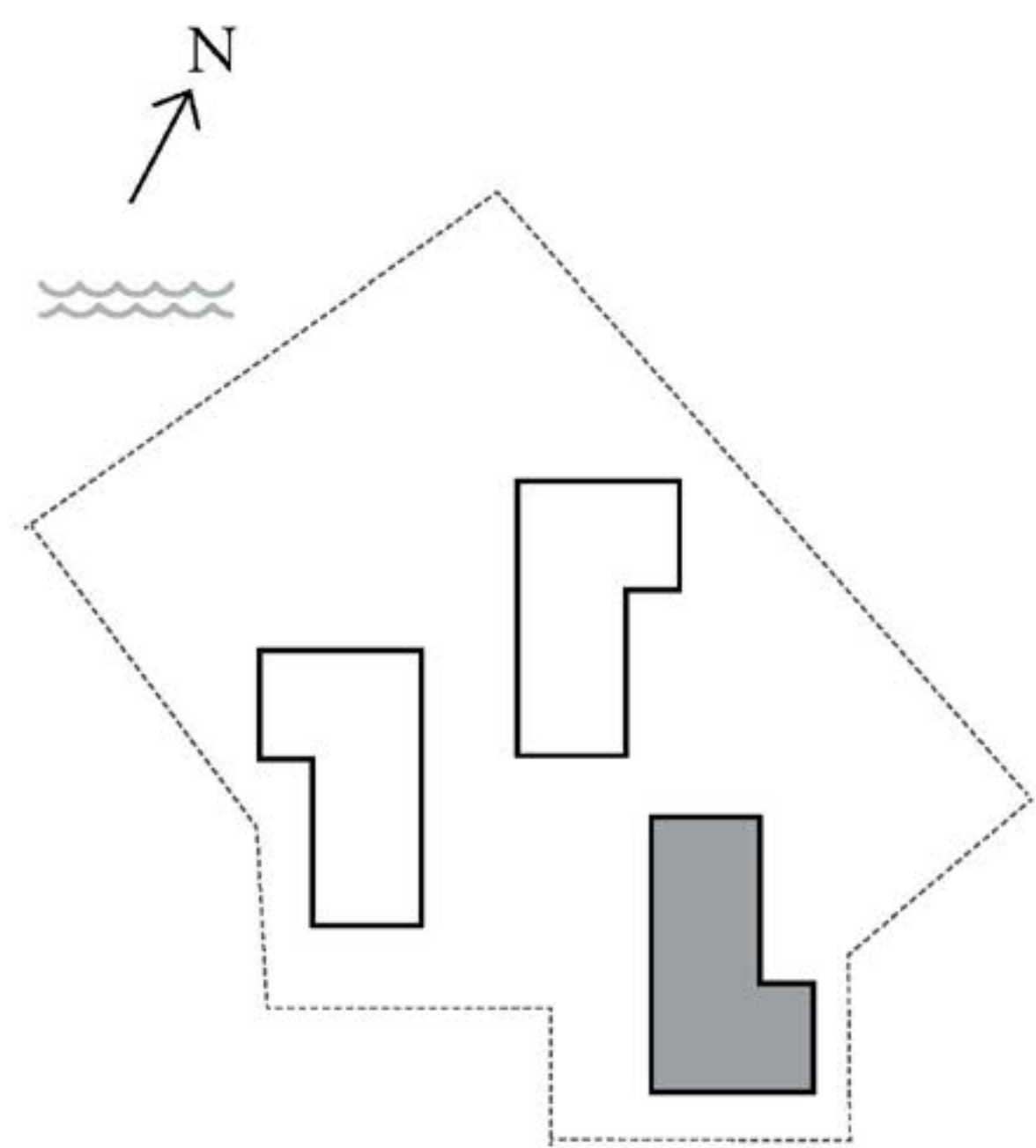
ROSEWATER

BUILDING 3

3 BEDROOM

UNIT 07 LEVEL 01

APARTMENT AREA	1442.90 SQ.FT.	134.05 SQ.M.
BALCONY AREA	639.81 Q.FT.	59.44 SQ.M.
TOTAL AREA	2082.71 SQ.FT.	193.49 SQ.M.



	L07
	L06
	L05
	L04
	L03
	L02
	L01
	M
	G



FLOOR PLAN 1. All dimensions are in imperial and metric, and measured from finish to finish excluding construction tolerances. 2. All materials, dimensions, and drawings are approximate only. 3. Information is subject to change without notice, at developer's absolute discretion. 4. Actual area may vary from the stated area. 5. Drawings not to scale. 6. All images used are for illustrative purposes only and do not represent the actual size, features, specifications, fittings, and furnishings. 7. The developer reserves the right to make revisions / alterations, at it's absolute discretion, without any liability whatsoever.

CREEK BEACH

ROSEWATER

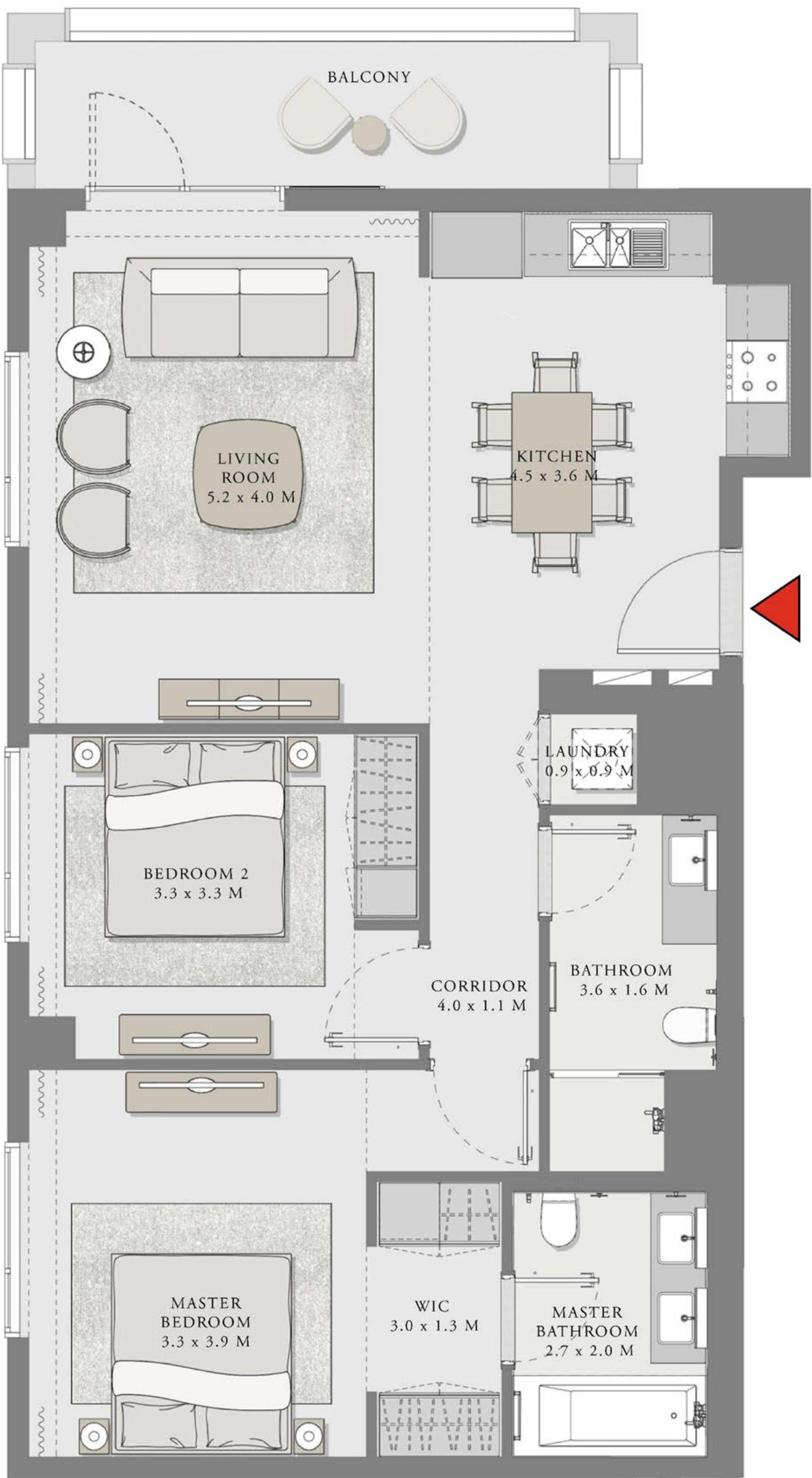
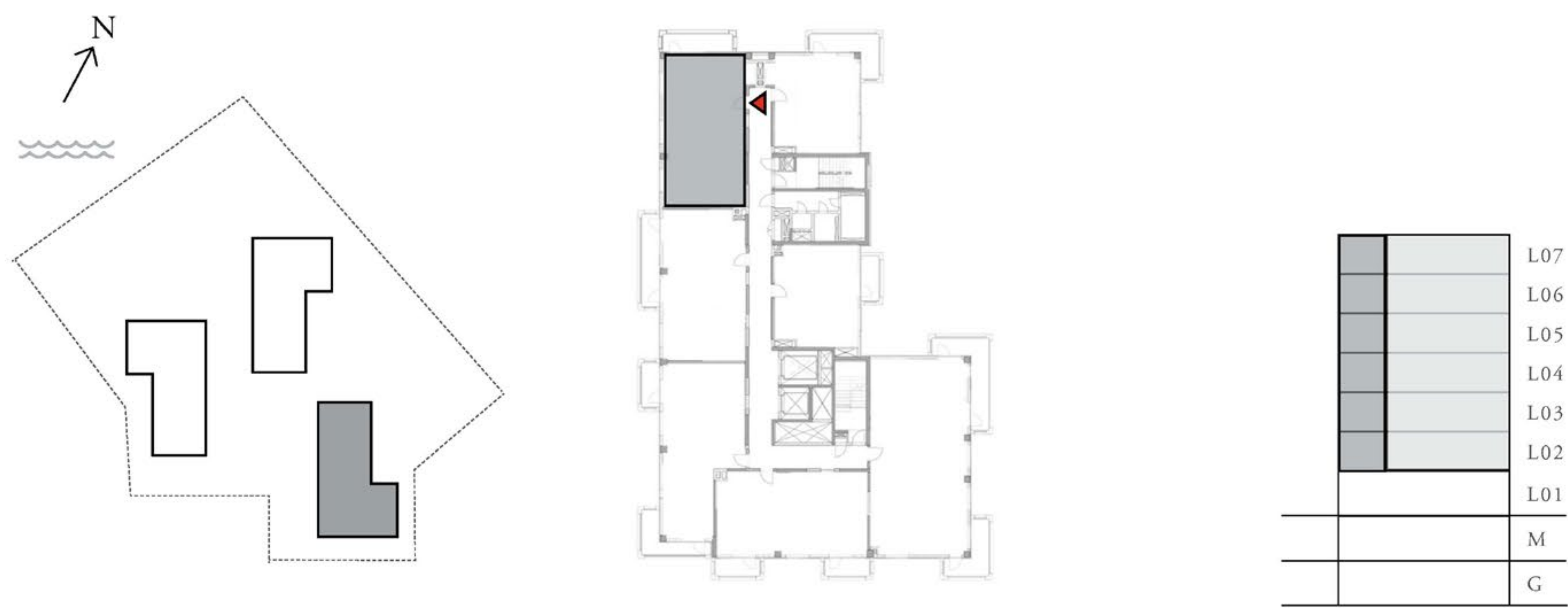
BUILDING 3

2 BEDROOM

UNIT 03

LEVEL 02-07

APARTMENT AREA	980.16 SQ.FT.	91.06 SQ.M.
BALCONY AREA	102.36 SQ.FT.	9.51 SQ.M.
TOTAL AREA	1082.52 SQ.FT.	100.57 SQ.M.



FLOOR PLAN 1. All dimensions are in imperial and metric, and measured from finish to finish excluding construction tolerances. 2. All materials, dimensions, and drawings are approximate only. 3. Information is subject to change without notice, at developer's absolute discretion. 4. Actual area may vary from the stated area. 5. Drawings not to scale. 6. All images used are for illustrative purposes only and do not represent the actual size, features, specifications, fittings, and furnishings. 7. The developer reserves the right to make revisions / alterations, at it's absolute discretion, without any liability whatsoever.

CREEK BEACH

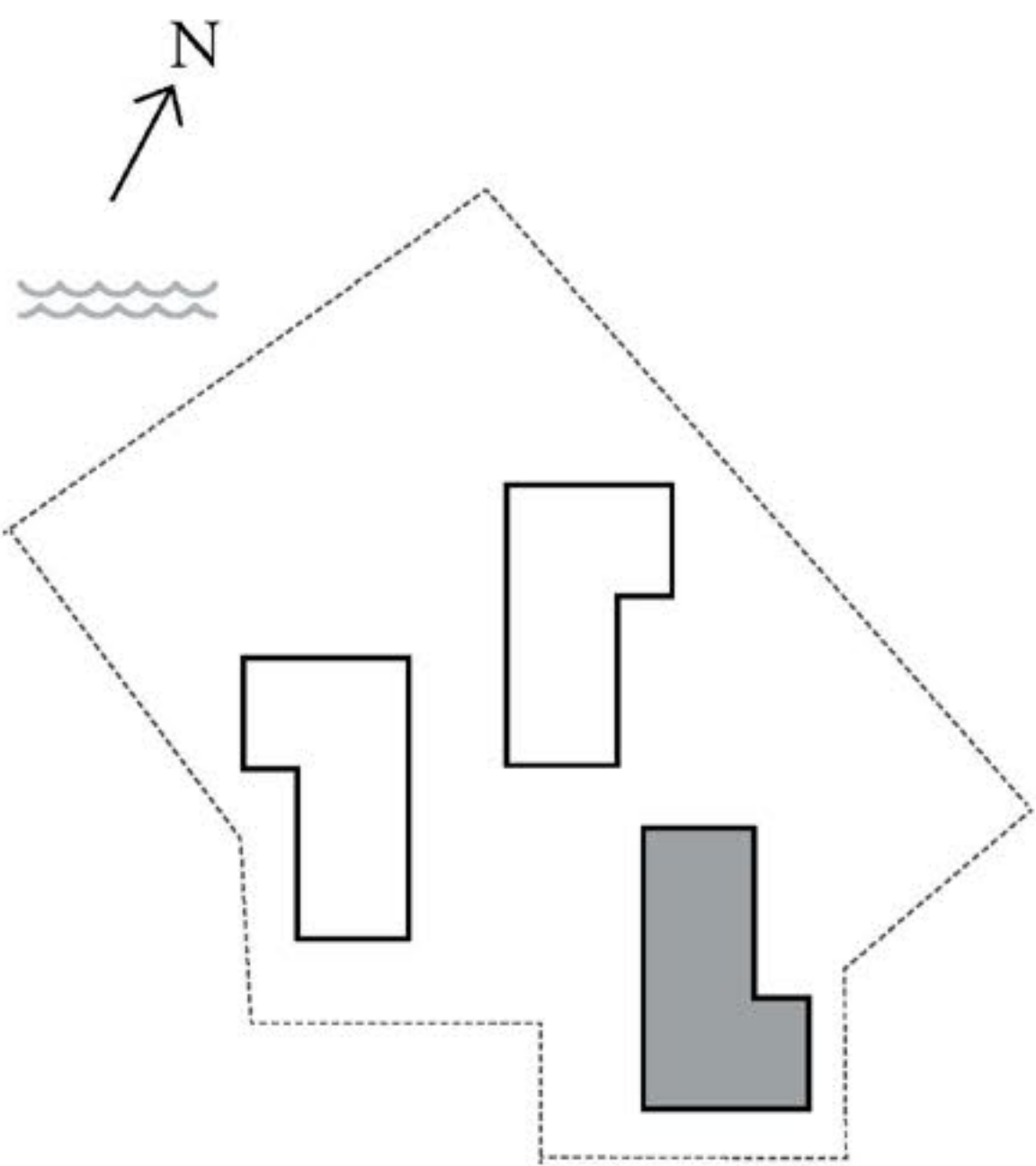
ROSEWATER

BUILDING 3

2 BEDROOM

UNIT 04 LEVEL 02-07

APARTMENT AREA	947.01 SQ.FT.	87.98 SQ.M.
BALCONY AREA	132.40 SQ.FT.	12.30 SQ.M.
TOTAL AREA	1079.41 SQ.FT.	100.28 SQ.M.



	L07
	L06
	L05
	L04
	L03
	L02
	L01
	M
	G



FLOOR PLAN 1. All dimensions are in imperial and metric, and measured from finish to finish excluding construction tolerances. 2. All materials, dimensions, and drawings are approximate only. 3. Information is subject to change without notice, at developer's absolute discretion. 4. Actual area may vary from the stated area. 5. Drawings not to scale. 6. All images used are for illustrative purposes only and do not represent the actual size, features, specifications, fittings, and furnishings. 7. The developer reserves the right to make revisions / alterations, at it's absolute discretion, without any liability whatsoever.

CREEK BEACH

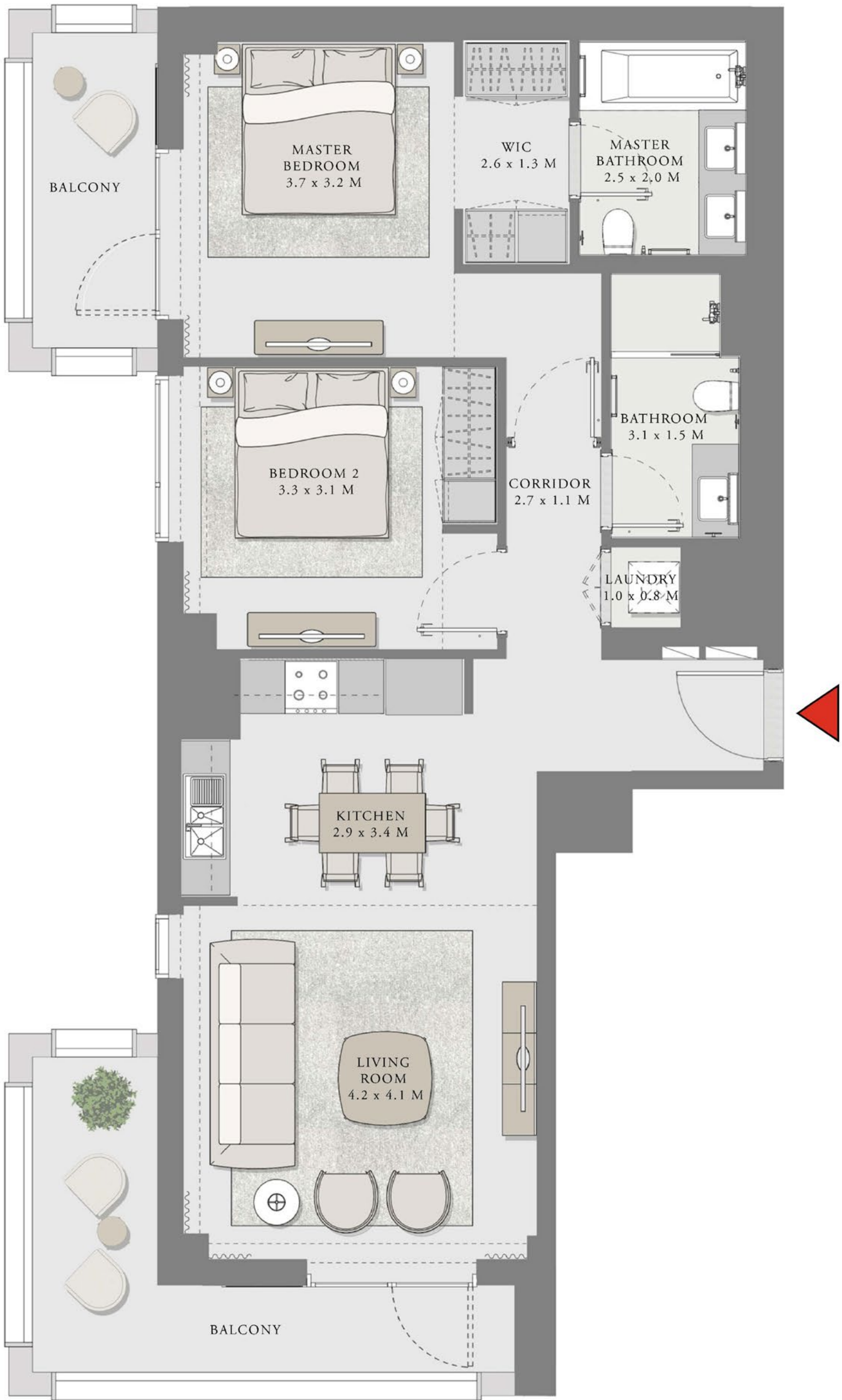
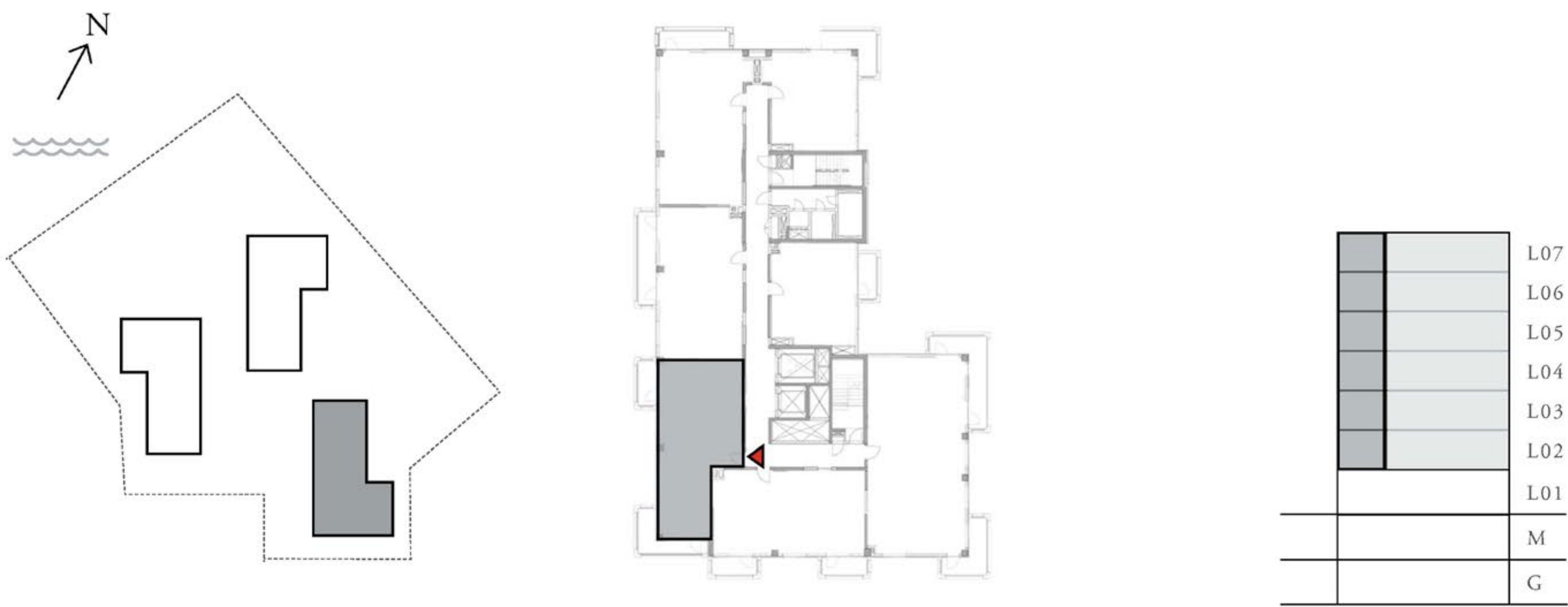
ROSEWATER

BUILDING 3

2 BEDROOM

UNIT 05 LEVEL 02-07

APARTMENT AREA	936.35 SQ.FT.	86.99 SQ.M.
BALCONY AREA	189.23 SQ.FT.	17.58 SQ.M.
TOTAL AREA	1125.58 SQ.FT.	104.57 SQ.M.



FLOOR PLAN 1. All dimensions are in imperial and metric, and measured from finish to finish excluding construction tolerances. 2. All materials, dimensions, and drawings are approximate only. 3. Information is subject to change without notice, at developer's absolute discretion. 4. Actual area may vary from the stated area. 5. Drawings not to scale. 6. All images used are for illustrative purposes only and do not represent the actual size, features, specifications, fittings, and furnishings. 7. The developer reserves the right to make revisions / alterations, at it's absolute discretion, without any liability whatsoever.

CREEK BEACH

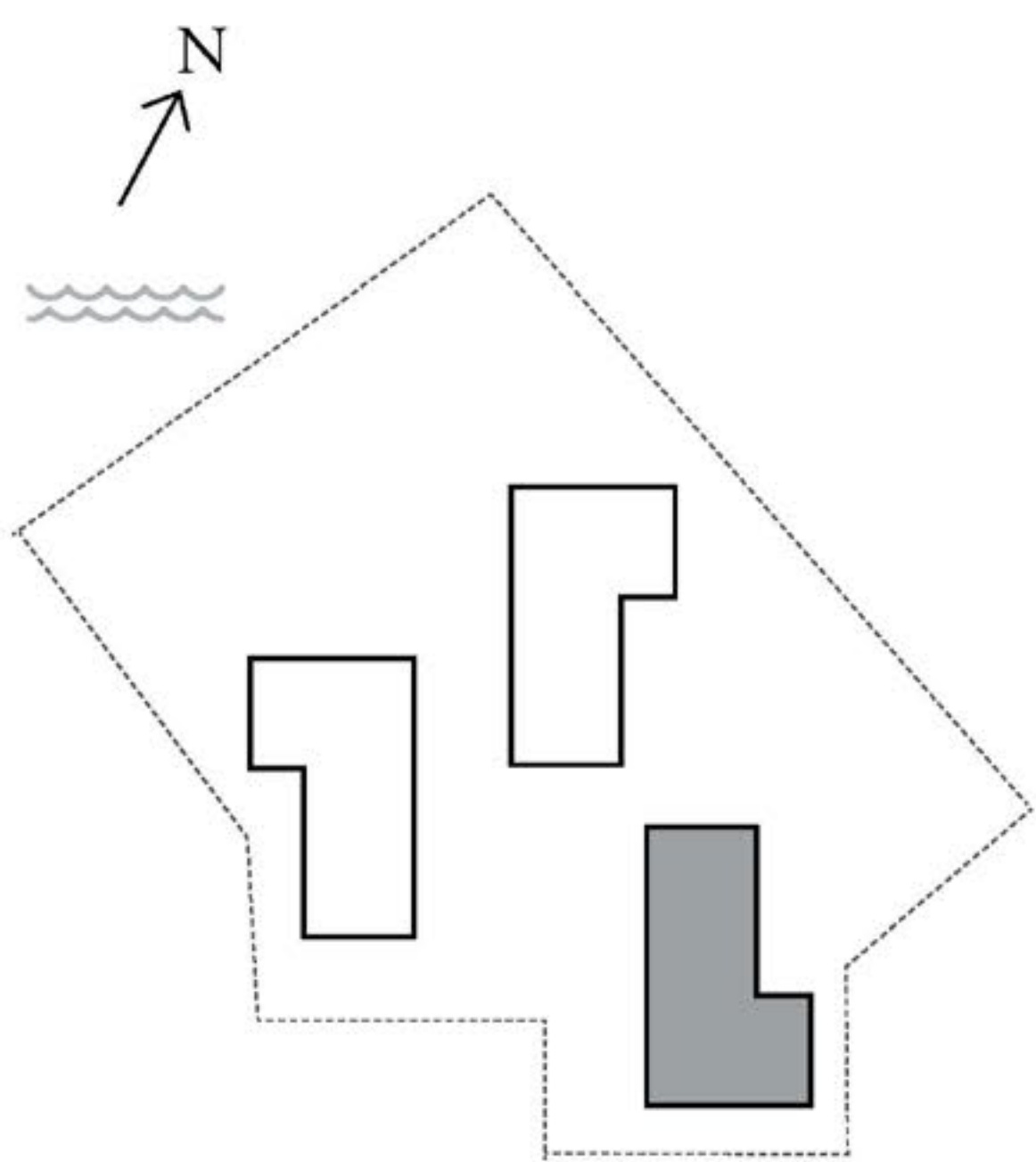
ROSEWATER

BUILDING 3

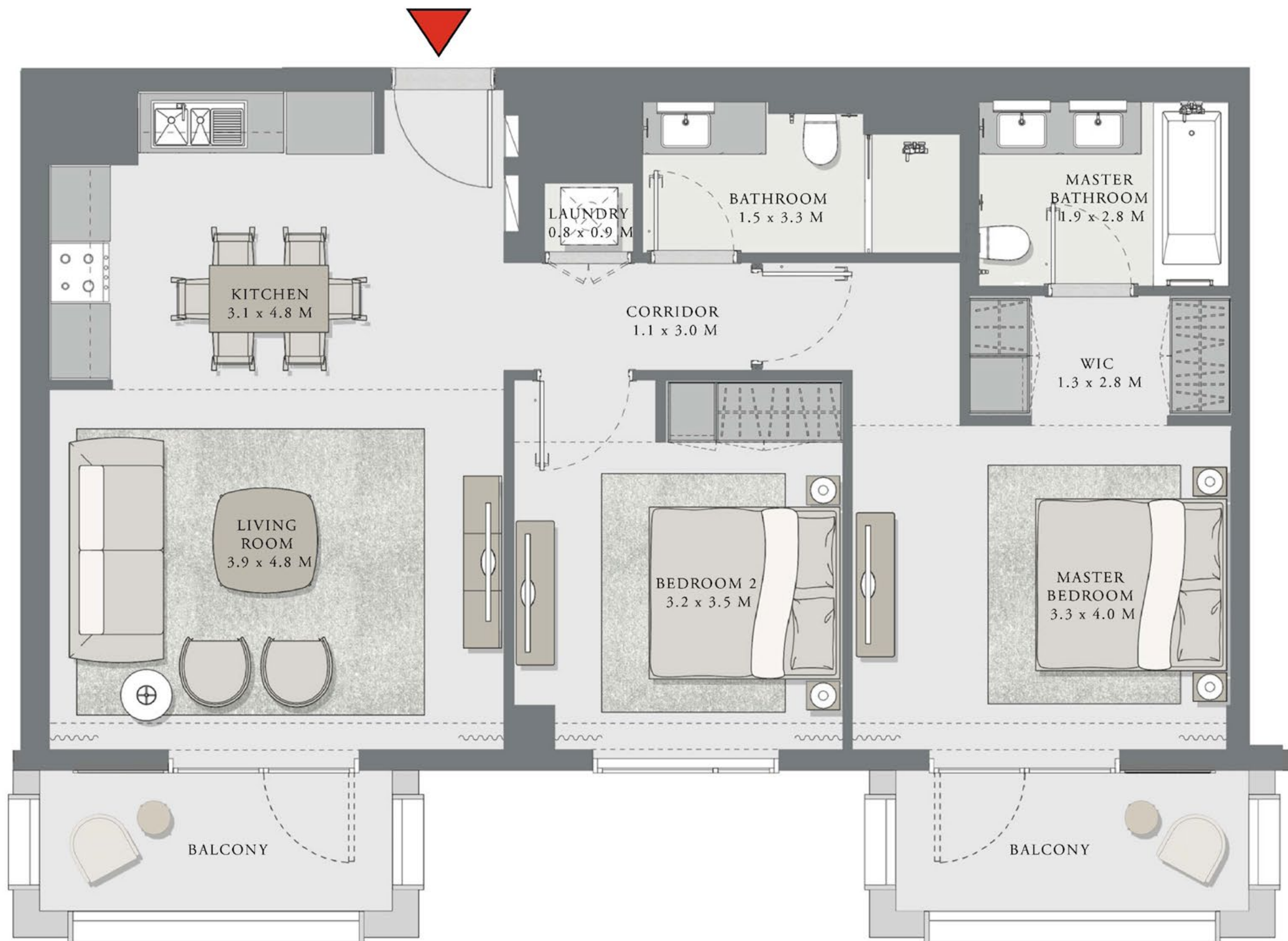
2 BEDROOM

UNIT 06 LEVEL 02-07

APARTMENT AREA	947.87 SQ.FT.	88.06 SQ.M.
BALCONY AREA	132.61 SQ.FT.	12.32 SQ.M.
TOTAL AREA	1080.48 SQ.FT.	100.38 SQ.M.



	L07
	L06
	L05
	L04
	L03
	L02
	L01
	M
	G



FLOOR PLAN 1. All dimensions are in imperial and metric, and measured from finish to finish excluding construction tolerances. 2. All materials, dimensions, and drawings are approximate only. 3. Information is subject to change without notice, at developer's absolute discretion. 4. Actual area may vary from the stated area. 5. Drawings not to scale. 6. All images used are for illustrative purposes only and do not represent the actual size, features, specifications, fittings, and furnishings. 7. The developer reserves the right to make revisions / alterations, at it's absolute discretion, without any liability whatsoever.

CREEK BEACH

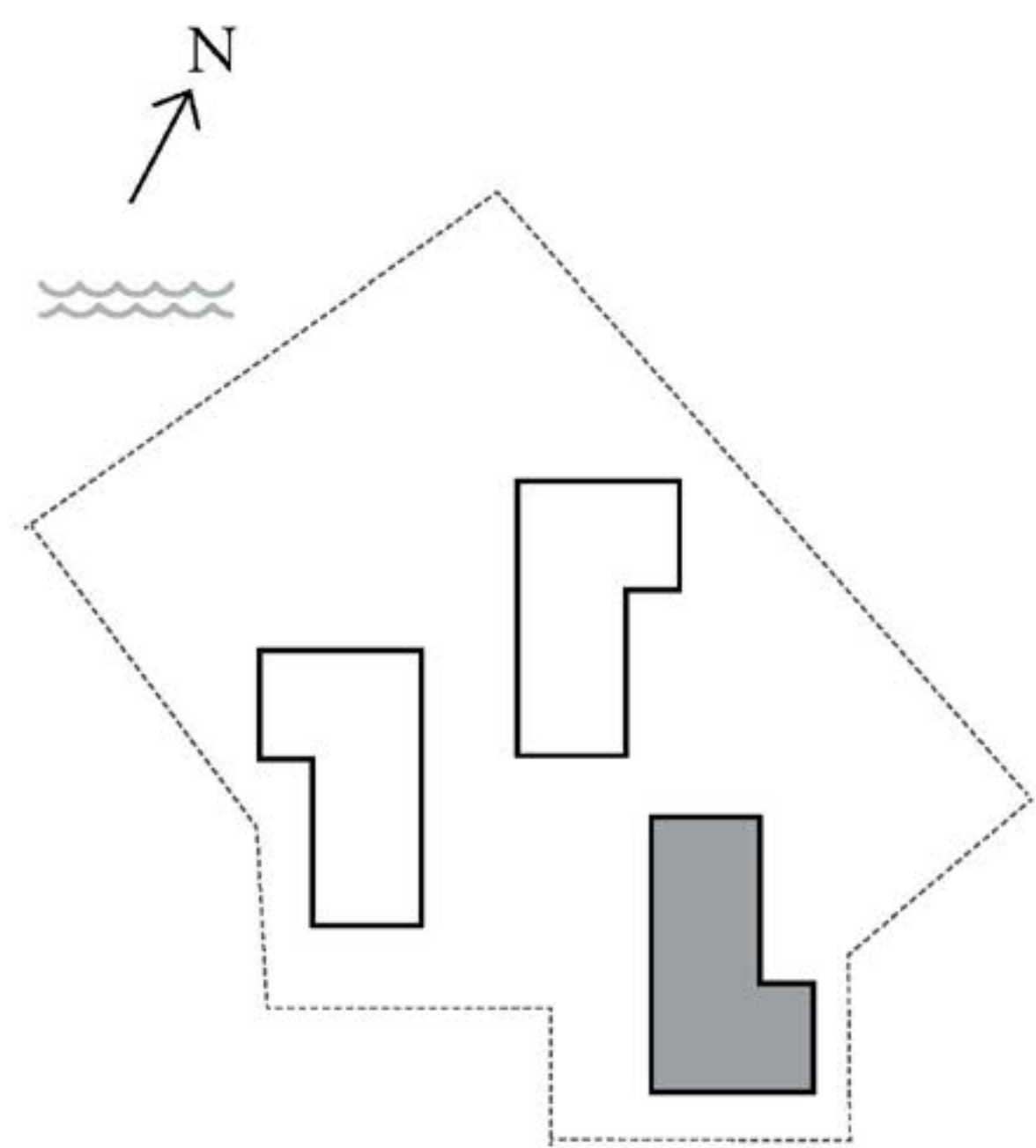
ROSEWATER

BUILDING 3

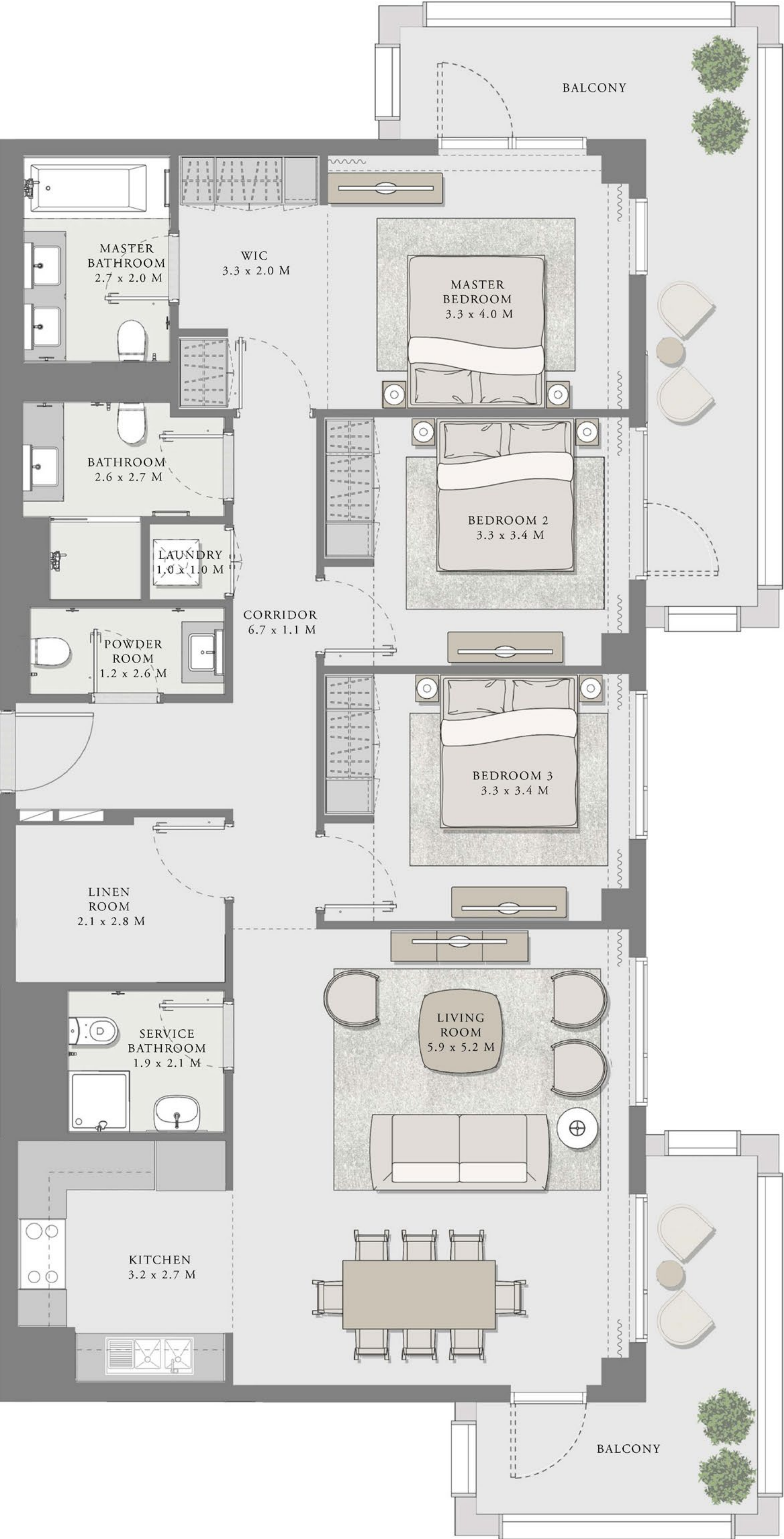
3 BEDROOM

UNIT 07 LEVEL 02-07

APARTMENT AREA	1442.47 SQ.FT.	134.01 SQ.M.
BALCONY AREA	308.82 SQ.FT.	28.69 SQ.M.
TOTAL AREA	1751.29 SQ.FT.	162.70 SQ.M.



	L07
	L06
	L05
	L04
	L03
	L02
	L01
	M
	G



FLOOR PLAN 1. All dimensions are in imperial and metric, and measured from finish to finish excluding construction tolerances. 2. All materials, dimensions, and drawings are approximate only. 3. Information is subject to change without notice, at developer's absolute discretion. 4. Actual area may vary from the stated area. 5. Drawings not to scale. 6. All images used are for illustrative purposes only and do not represent the actual size, features, specifications, fittings, and furnishings. 7. The developer reserves the right to make revisions / alterations, at it's absolute discretion, without any liability whatsoever.

CREEK BEACH

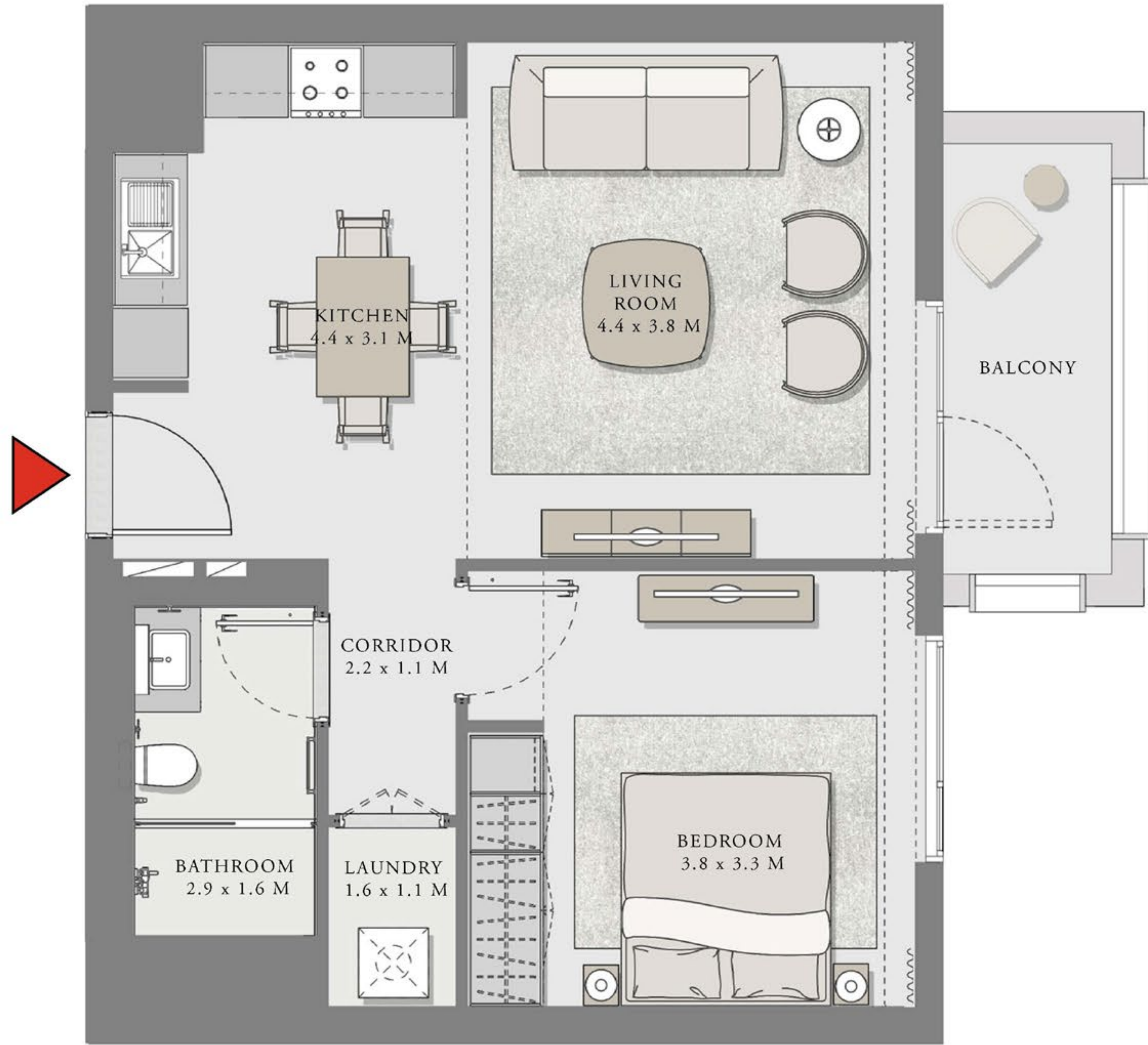
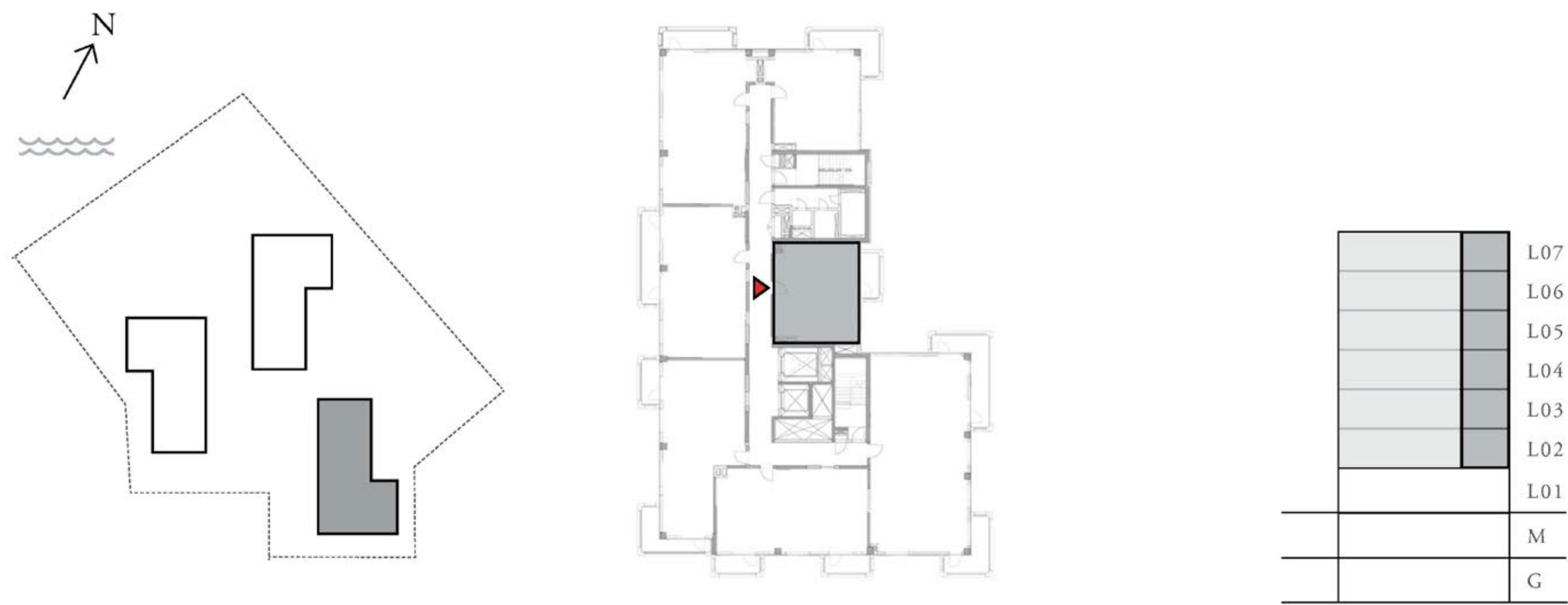
ROSEWATER

BUILDING 3

1 BEDROOM

UNIT 01 LEVEL 02-07

APARTMENT AREA	645.73 SQ.FT.	59.99 SQ.M.
BALCONY AREA	67.27 SQ.FT.	6.25 SQ.M.
TOTAL AREA	713.00 SQ.FT.	66.24 SQ.M.



FLOOR PLAN 1. All dimensions are in imperial and metric, and measured from finish to finish excluding construction tolerances. 2. All materials, dimensions, and drawings are approximate only. 3. Information is subject to change without notice, at developer's absolute discretion. 4. Actual area may vary from the stated area. 5. Drawings not to scale. 6. All images used are for illustrative purposes only and do not represent the actual size, features, specifications, fittings, and furnishings. 7. The developer reserves the right to make revisions / alterations, at it's absolute discretion, without any liability whatsoever.

CREEK BEACH

ROSEWATER

BUILDING 3

1 BEDROOM

UNIT 02 LEVEL 02-07

APARTMENT AREA	645.62 SQ.FT.	59.98 SQ.M.
BALCONY AREA	139.82 SQ.FT.	12.99 SQ.M.
TOTAL AREA	785.44 SQ.FT.	72.97 SQ.M.



FLOOR PLAN 1. All dimensions are in imperial and metric, and measured from finish to finish excluding construction tolerances. 2. All materials, dimensions, and drawings are approximate only. 3. Information is subject to change without notice, at developer's absolute discretion. 4. Actual area may vary from the stated area. 5. Drawings not to scale. 6. All images used are for illustrative purposes only and do not represent the actual size, features, specifications, fittings, and furnishings. 7. The developer reserves the right to make revisions / alterations, at it's absolute discretion, without any liability whatsoever.