



VISTA DEL MAR

YAS ISLAND

LEISURE. RECREATION. CONVENIENCE

WELCOME TO THE UNITED ARAB EMIRATES

DREAMS BEGIN HERE

The United Arab Emirates (UAE) is a federation of seven emirates – Abu Dhabi, Dubai, Sharjah, Ajman, Ras-Al Khaimah, Fujairah and Umm Al-Quwain – with Abu Dhabi as its capital. The UAE is located at the south-east end of the Arabian Peninsula on the Persian Gulf, bordering Oman to the east and Saudi Arabia to the south, as well as sharing sea borders with Qatar, Iran and Pakistan. The country has a diverse and multicultural society.

With its full-throttle development, iconic skylines of high-rises and world-famous beach resorts, the United Arab Emirates has become a favourite for family holidays and city breaks.



A LUXURIOUS CITY
SURROUNDED BY WATER



ABU DHABI IS A CITY WITH A SOUL

Abu Dhabi, the UAE's capital, is a city with a soul. It's a destination that has attracted individuals from across the globe due to its inherent natural beauty, lively cultural environment, rich heritage, and thriving business opportunities. It's a locale that resonates with those who have chosen to make it their home, a place they hold close to their hearts.

ABOUT ABU DHABI



WHY INVEST IN ABU DHABI

Abu Dhabi is the perfect gateway to the Middle East, Africa and South Asia, offering world-class infrastructure with easy access to regional and global markets. Abu Dhabi has built a reputation as one of the best investment destinations in the region, empowering businesses to be competitive and innovative.

UAE Golden Visa

Tax-free Income

Infrastructure

Investor-friendly Policies

Connectivity

High Standard of Living

Development & Innovation

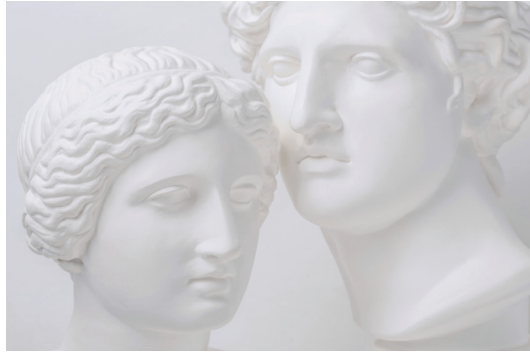
Safety

ABOUT ABU DHABI



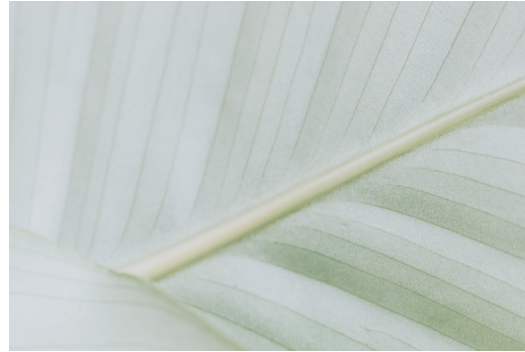
Water Activities

25



Museum & History

20



Parks & Nature

267



Sport Activities

45



Shopping

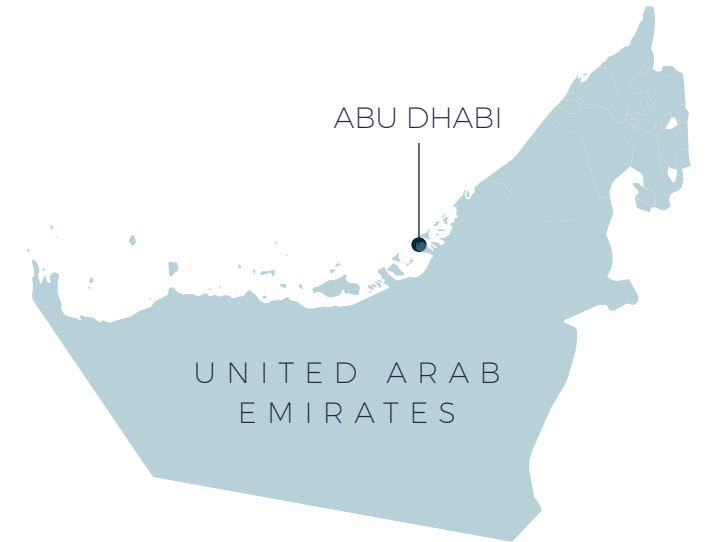
15



Hotels

499

ACTIVITIES IN ABU DHABI



ABOUT ABU DHABI

VISTA DEL MAR

YAS ISLAND

ABOUT THE PROJECT

LIFESTYLE IN A PERFECT BALANCE

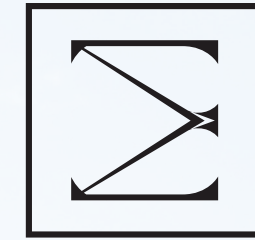
YAS ISLAND IN ABU DHABI

Yas Island stands as a serene sanctuary on one of Abu Dhabi's exquisite islands, featuring contemporary residential complexes that draw inspiration from the expansive, glistening deserts and verdant open spaces. This self-contained community provides a diverse array of lifestyle amenities, leisure pursuits, and recreational resources in a picturesque environment. Yas Island in Abu Dhabi offers an ideal setting for you to pursue your aspirations, fostering innovation and visionary leadership for the future.

DEVELOPER ESNAD MANAGEMENT

INTEGRITY. TRUST. EFFICIENCY.

We take pride in being recognized as one of the most respected and esteemed developers of real estate and lifestyle in the UAE. Our core objective goes beyond just building properties; it encompasses the craft of creating communities that people truly desire to be a part of. We are delighted to offer our client representation services to a diverse clientele, both within the Kingdom of Bahrain, the UAE, and various other countries, both locally and regionally.



ESNAD
Management

YOUR DREAM BEACHSIDE LIFESTYLE

9



LUXURY LIFESTYLE



VISTA DEL MAR

YAS ISLAND

CONTEMPORARY TRANSPARENT
ARCHITECTURE

Boasting breathtaking vistas of the waterfront, mangroves, Ferrari World, and its proximity to the beach. Vista del Mar consists of a select 90 high-end units. The master plan comprises 2 villas on the ground floor, 1, 2 and 3 bedroom apartments.

Situated in an investment-friendly zone, Vista del Mar is open for purchase to individuals of all nationalities. It has been meticulously designed to attract both property investors and those looking to reside in these exquisite properties.

WORLD-CLASS AMENITIES



Exclusive
Swimming Pool



Gym / Fitness
Center



Barbeque Area



Lounge Area



Yas Beach



Kids Play Area



Landscape
Views



Covered Car
Parking

Project Name: Vista del Mar
Developer: ESNAD Management
Location: Yas Island, Abu Dhabi
Project Type: Apartments
Floors: 11
Handover Date: Q4 2025

Total Units: 90
Type Units:
1 Bedroom
2 Bedroom
3 Bedroom
4 Bedroom





PERFECT LOCATION



2 Min
Yas Beach Club



9 Min
Yas Mall



4 Min
Etihad Arena



20 Min
International Airport



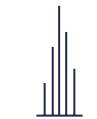
6 Min
Yas Bay Waterfront



30 Min
Downtown



8 Min
Ferrari World



40 Min
Dubai

WHATEVER
YOU NEED IS WAITING
FOR YOU HERE

PREMIUM QUALITY FINISHES

A luxurious interior is crafted through meticulous attention to detail, utilizing premium finishes and precise material integration. It's important to note that achieving this doesn't always require exorbitant costs. The inclusion of elegant wood accents paired with focused lighting can yield stunning results. Our designers have seamlessly blended contemporary trends with cutting-edge technology and the demands of modern living.

To achieve our objectives, our high-end designer oversees the entire design process, commencing with room layouts, lighting choices, material selection, and culminating in the arrangement of furniture and decorative elements.



RECEPTION





LOUNGE

SWIMMING POOL





GYM / FITNESS



OPEN OUTDOOR SANCTUARIES

LANDSCAPE AREA





ADVENTUROUS PLAYS



KID'S PLAY AREA



A HOME THAT FULFILS YOUR NEEDS

A luxurious interior is crafted through top-notch finishes and meticulous material integration, which doesn't necessarily come with a high price tag. The addition of an exquisite wooden element complemented by focused lighting can yield a stunning look. Our designers have seamlessly blended the latest design trends with cutting-edge technology and the evolving demands of contemporary living.

To achieve this objective, our high-end designer oversees the entire design process, beginning with room layout, lighting selection, material finishes, and culminating in the arrangement of furniture and decorative elements.



INTERIOR & DESIGN

METICULOUS ATTENTION
TO DETAIL

VIEW 3BR LIVING ROOM



IMPECCABLE DESIGN



LIVING ROOM

A CREATIVE FLOURISH

Every apartment boasts a unique contemporary design that harmoniously merges with the natural surroundings, ensuring it complements your distinct individuality. Returning to your exceptionally modern apartment, you'll find a residence characterized by its sleek architectural lines and minimalistic design. These 1, 2, 3-bedroom apartments and 3, 4-bedroom villas effortlessly combine elegance and sophistication to create the perfect living space.



LUXURY BEDROOM



THE ESSENCE
OF SOPHISTICATION





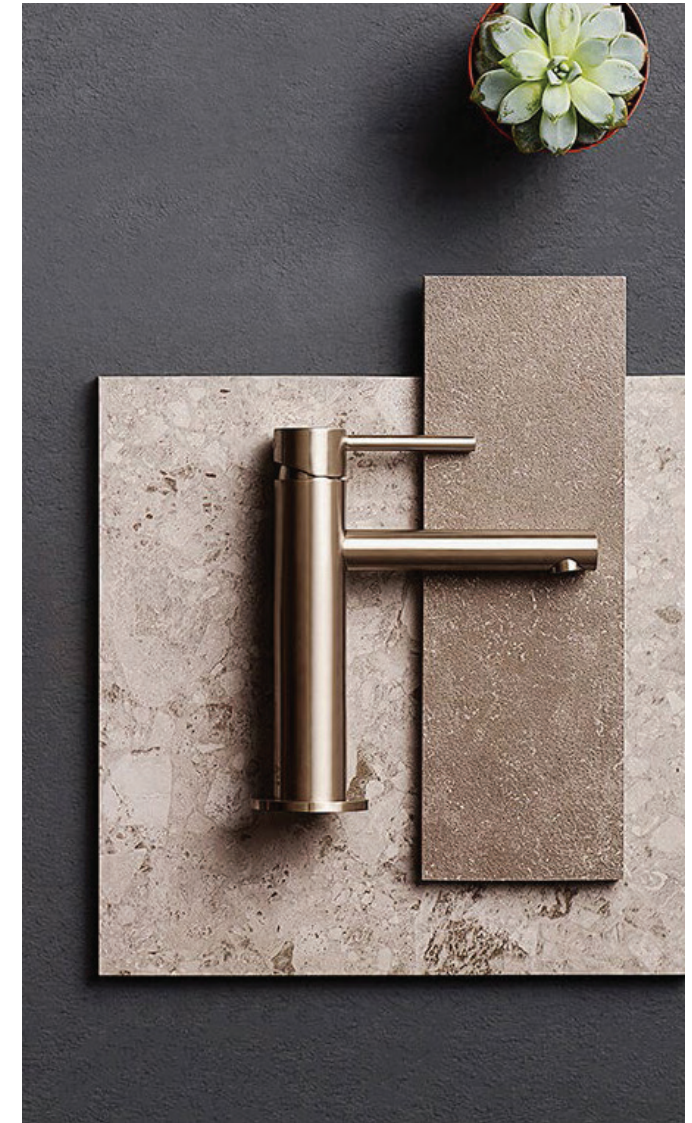
COMFORT & STYLE

VIEW KITCHEN

MODERN KITCHEN



SPACIOUS BATHROOM



FLOOR PLAN REFERENCES

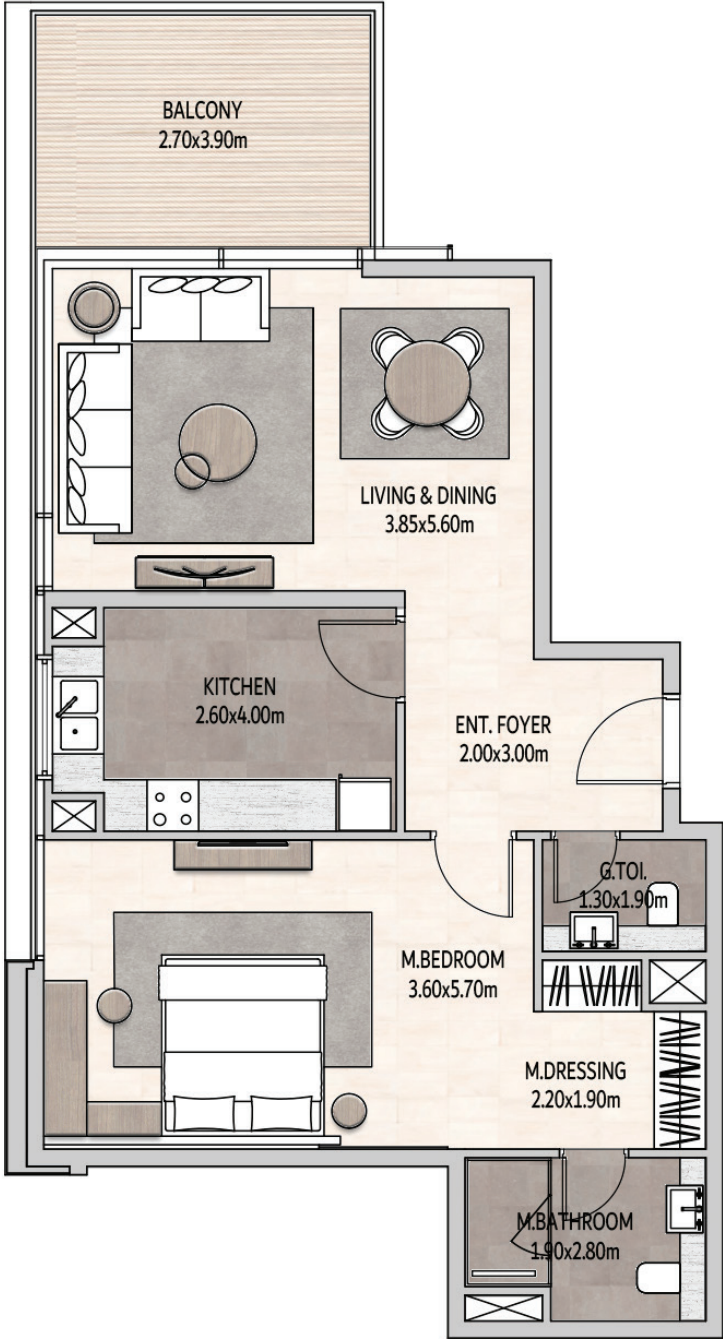
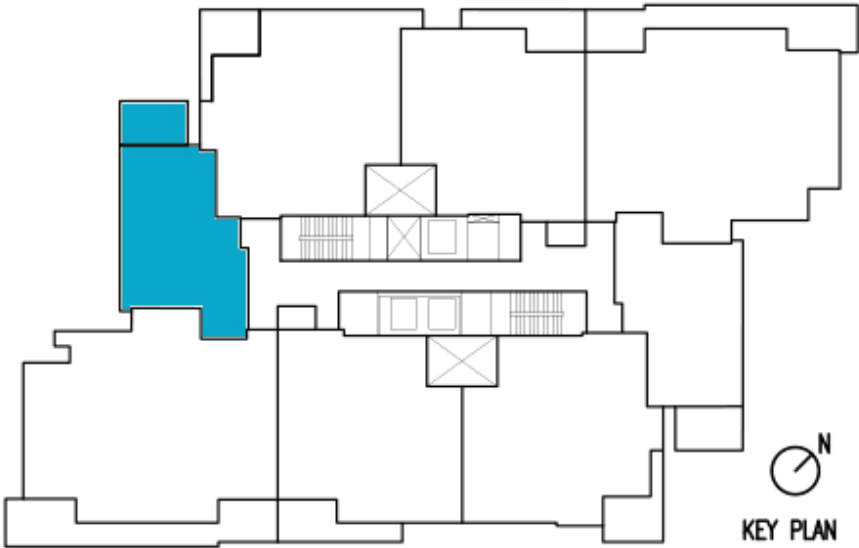
1 BEDROOM APARTMENT

TYPE 1

SUITE AREA	82.18 sqm
BALCONY AREA	11.00 sqm
TOTAL AREA	93.18 sqm

LEVEL: 1 - 11

1BD APARTMENT LAYOUT



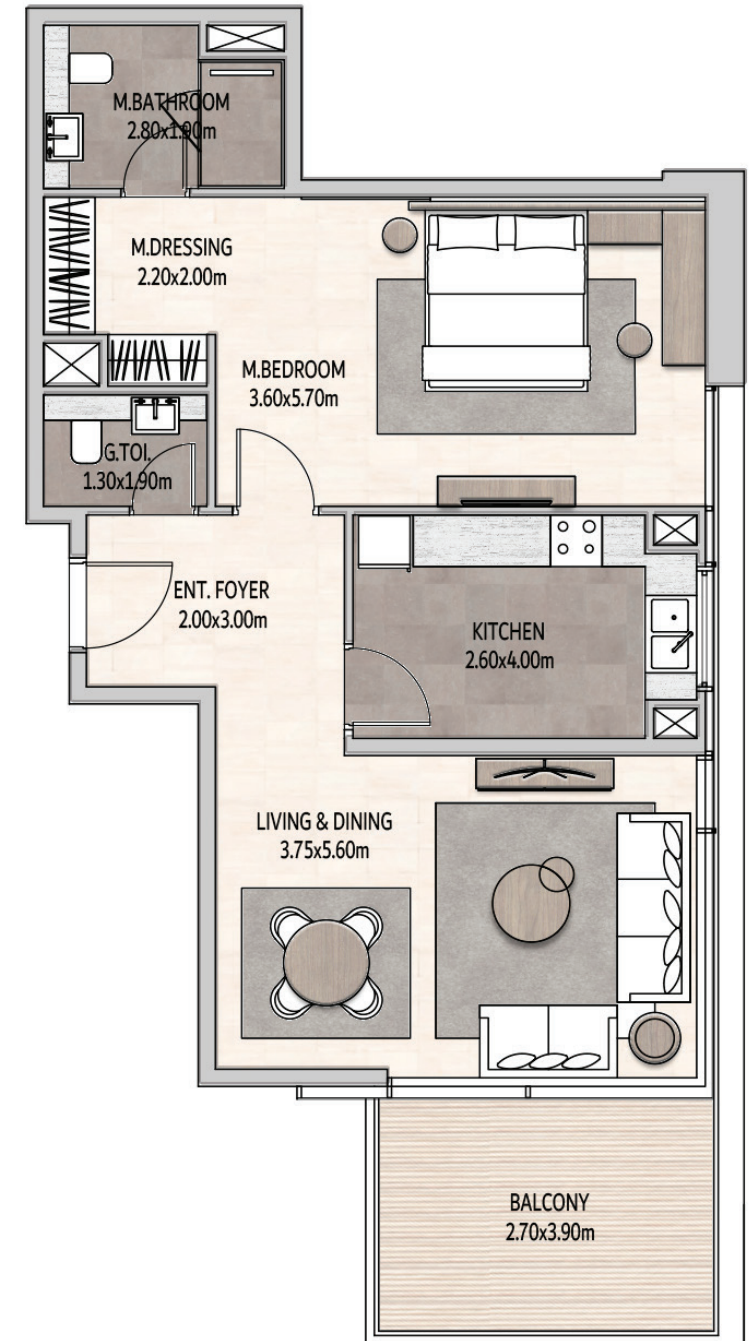
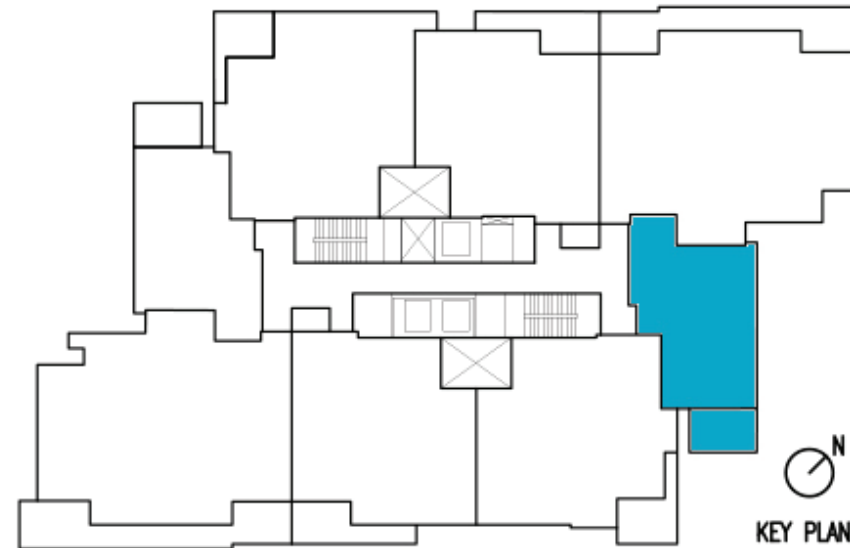
1 BEDROOM APARTMENT

TYPE 2

SUITE AREA	82.18 sqm
BALCONY AREA	11.00 sqm
TOTAL AREA	93.18 sqm

LEVEL: 1 - 11

1BD APARTMENT LAYOUT



2 BEDROOM APARTMENT

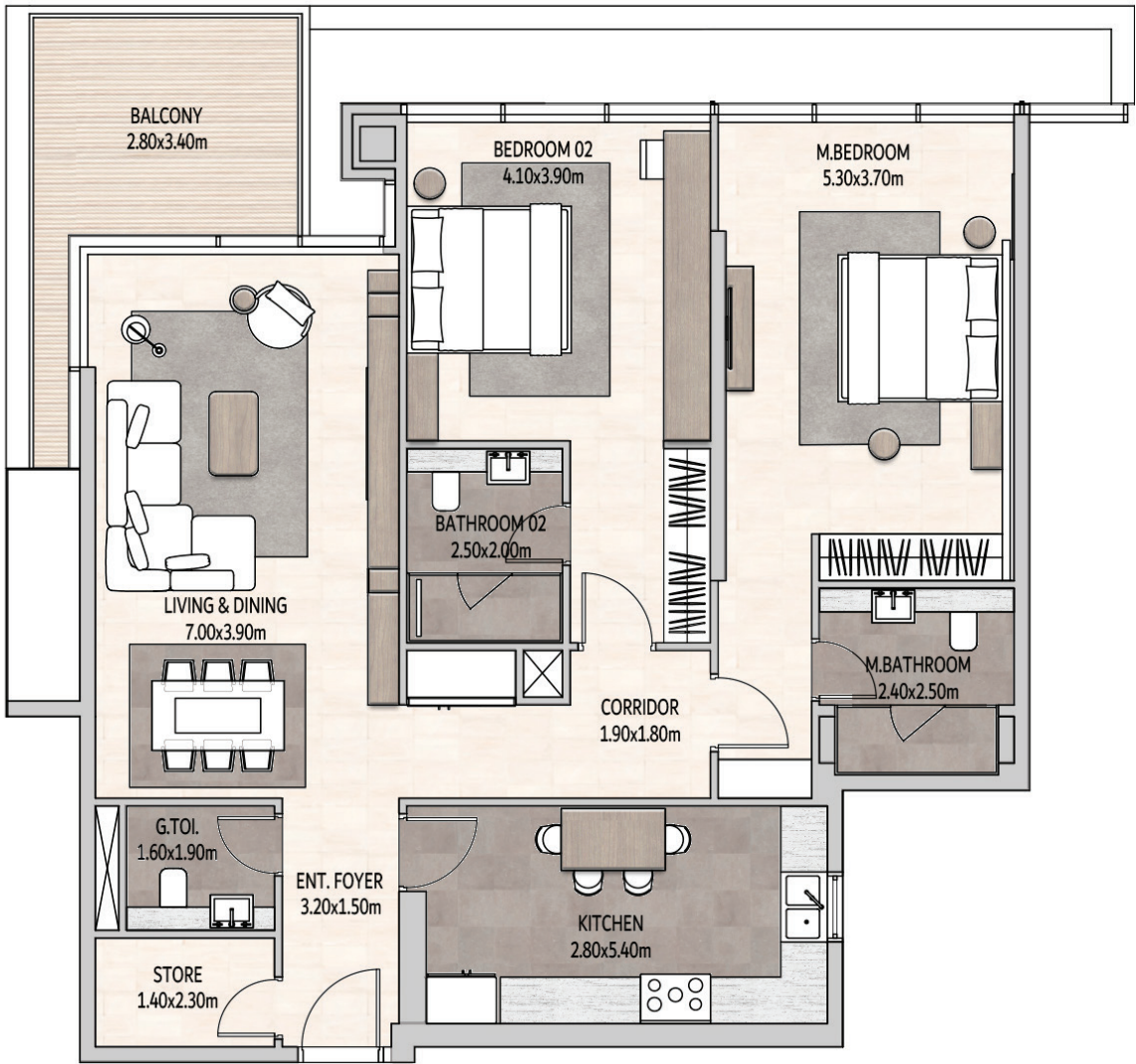
TYPE 1

SUITE AREA	135.54 sqm
BALCONY AREA	11.47 sqm
TOTAL AREA	147.01 sqm



LEVEL: 1 - 11

2BD APARTMENT LAYOUT

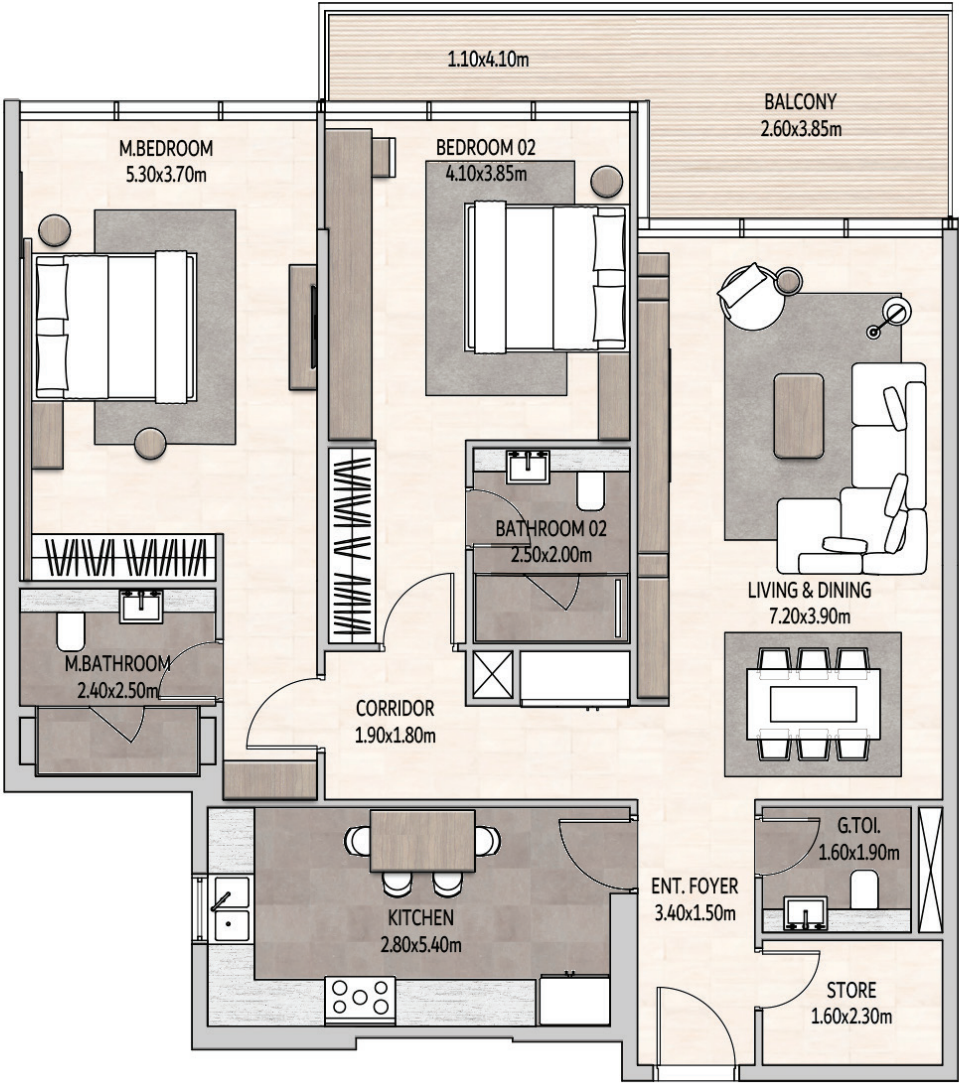
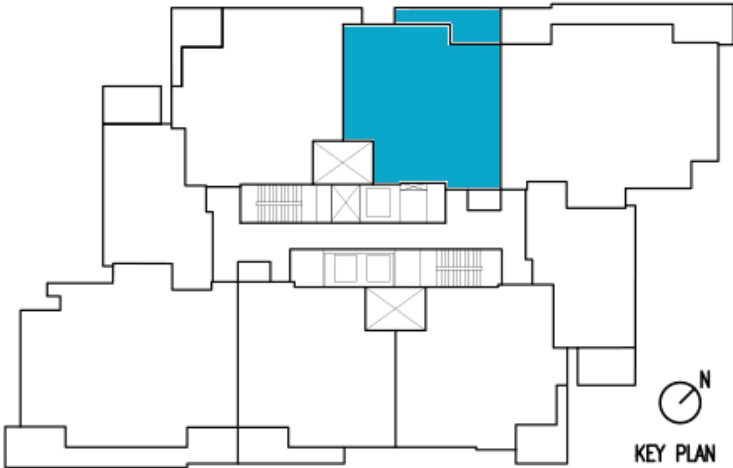


2 BEDROOM APARTMENT

TYPE 2

SUITE AREA	135.66 sqm
BALCONY AREA	15.04 sqm
TOTAL AREA	150.07 sqm

LEVEL: 1 - 10

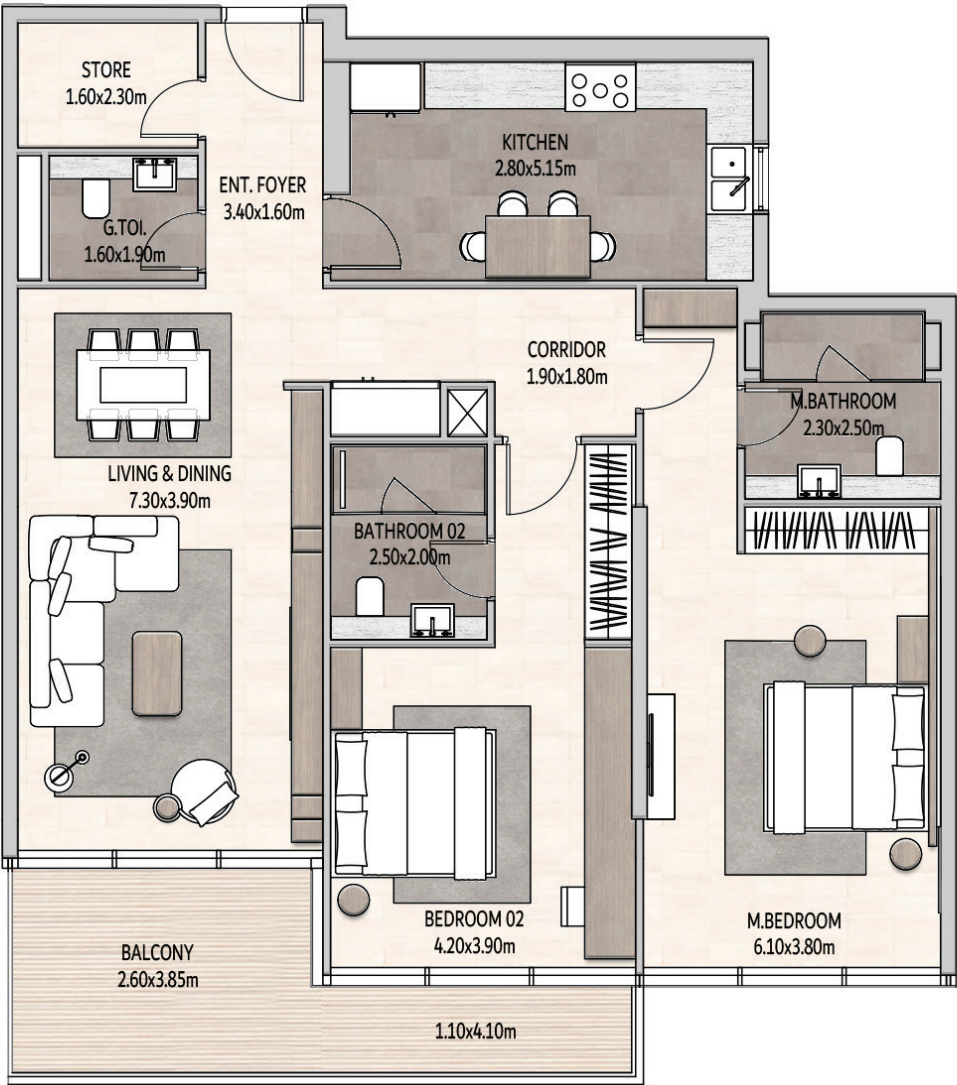
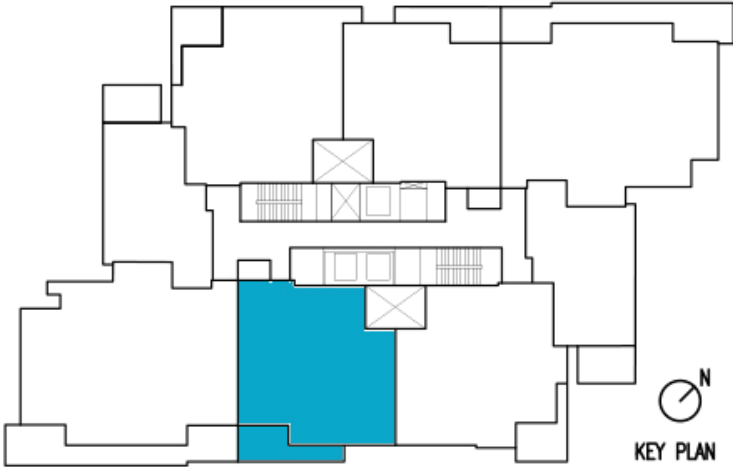


2 BEDROOM APARTMENT

TYPE 3

SUITE AREA	136.12 sqm
BALCONY AREA	16.05 sqm
TOTAL AREA	152.17 sqm

LEVEL: 1 - 10

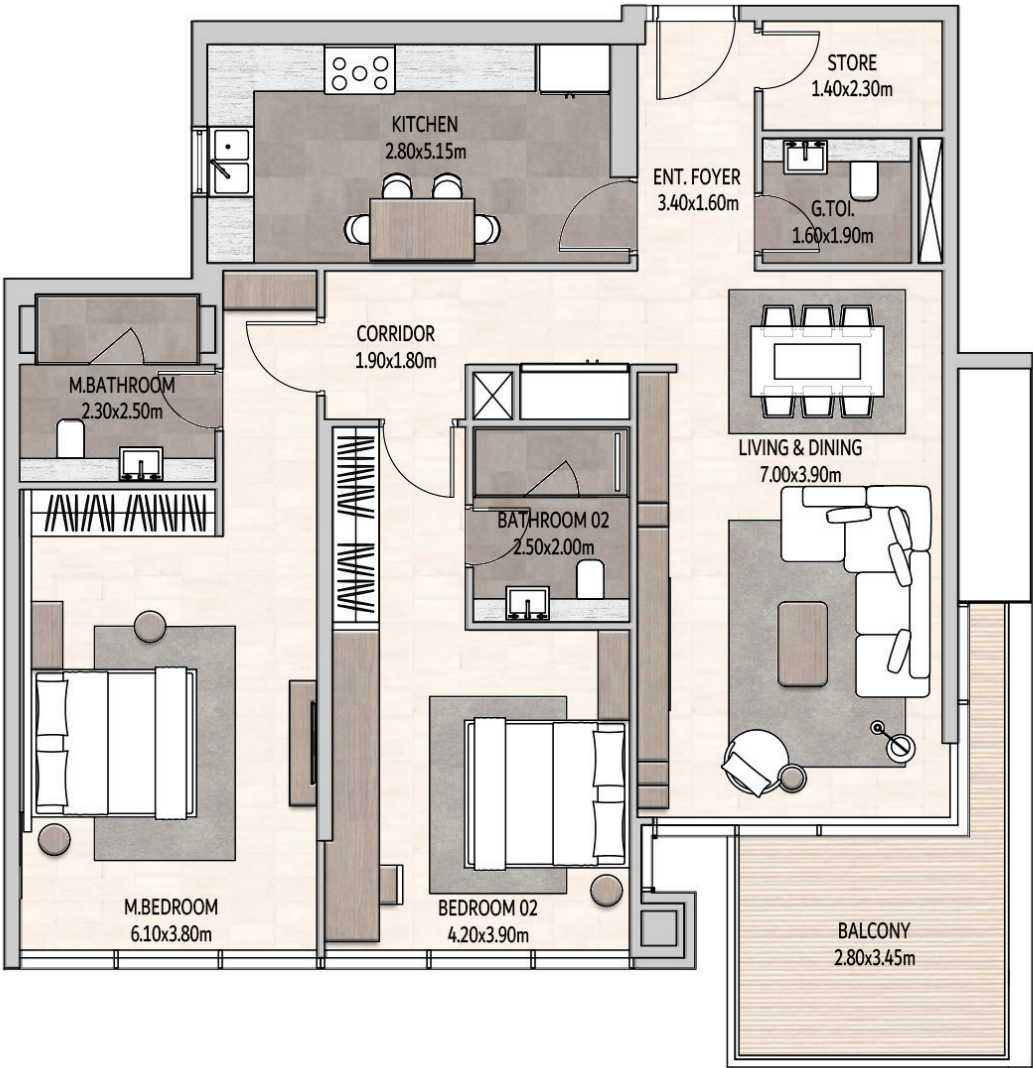
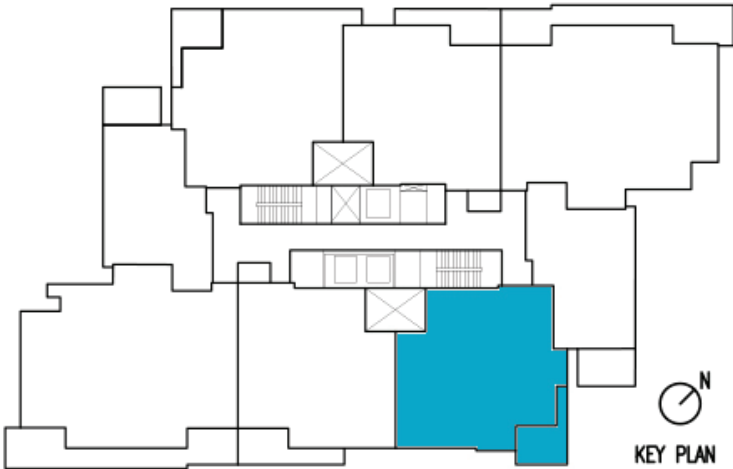


2 BEDROOM APARTMENT

TYPE 4

SUITE AREA	135.54 sqm
BALCONY AREA	11.47 sqm
TOTAL AREA	147.01 sqm

LEVEL: 1 - 11

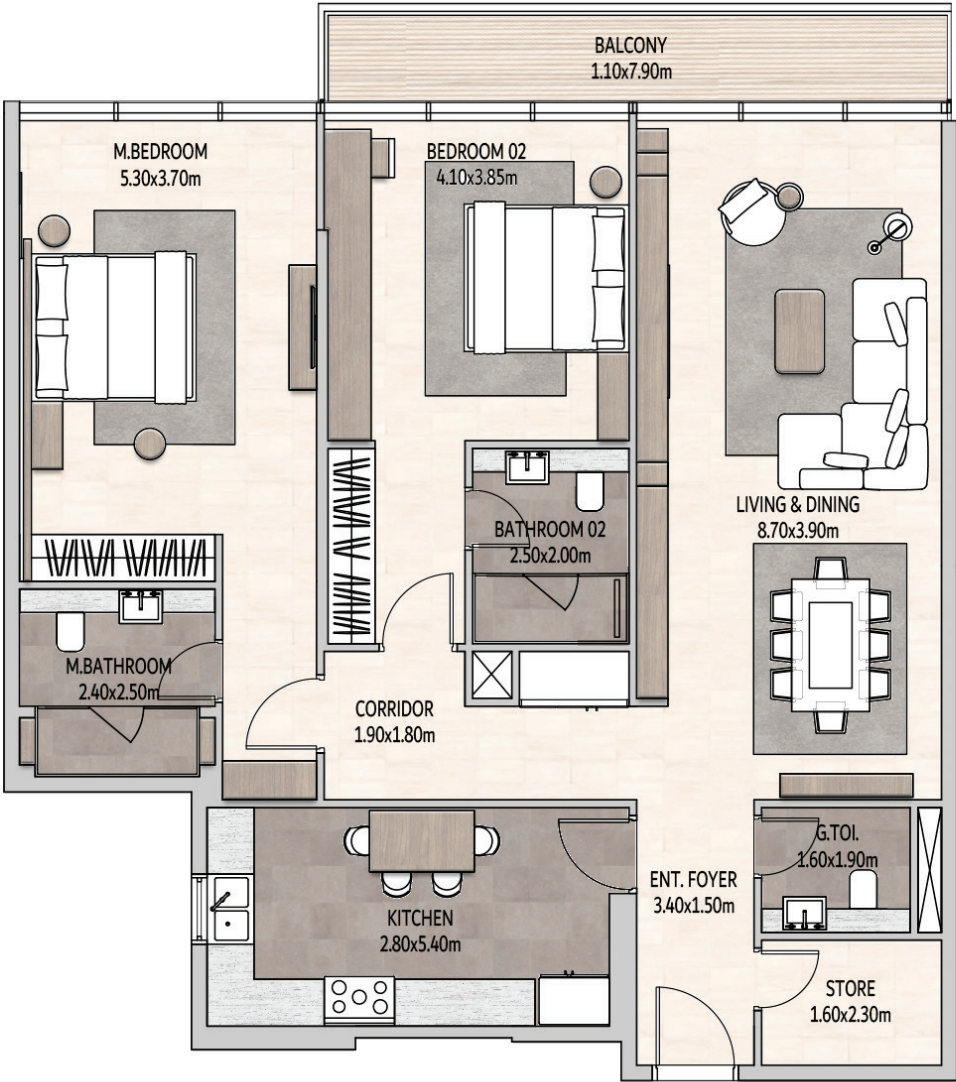
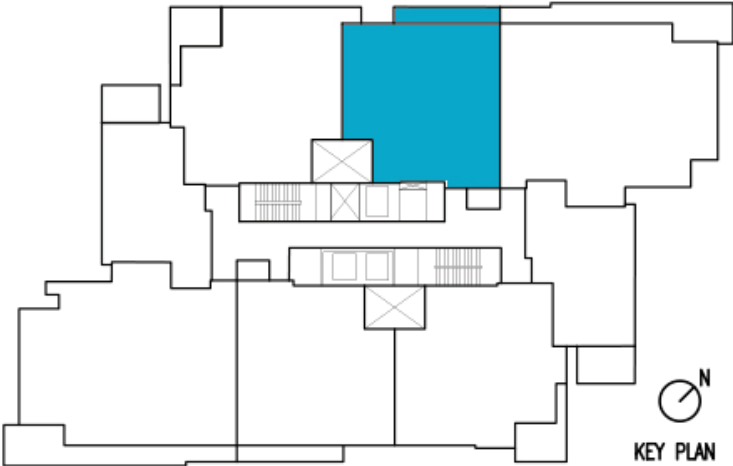


2 BEDROOM APARTMENT

TYPE 5

SUITE AREA	141.59 sqm
BALCONY AREA	9.23 sqm
TOTAL AREA	150.82 sqm

LEVEL: 11

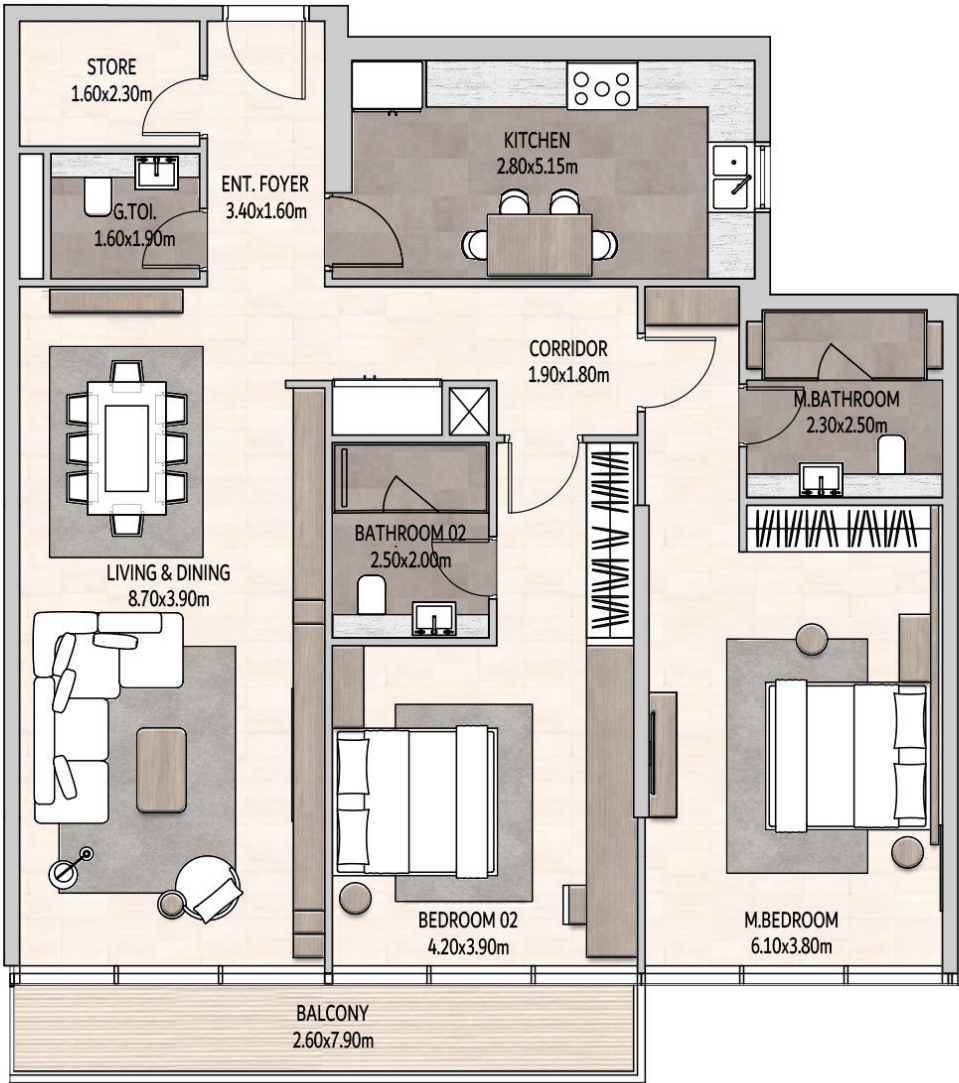
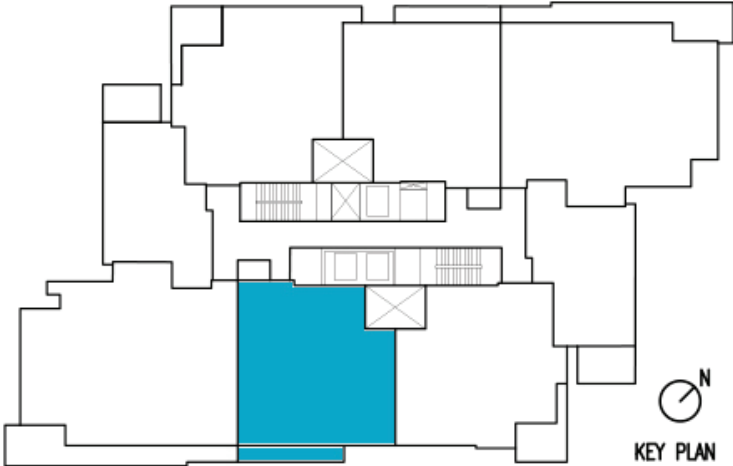


2 BEDROOM APARTMENT

TYPE 6

SUITE AREA	142.12 sqm
BALCONY AREA	10.16 sqm
TOTAL AREA	152.28 sqm

LEVEL: 11



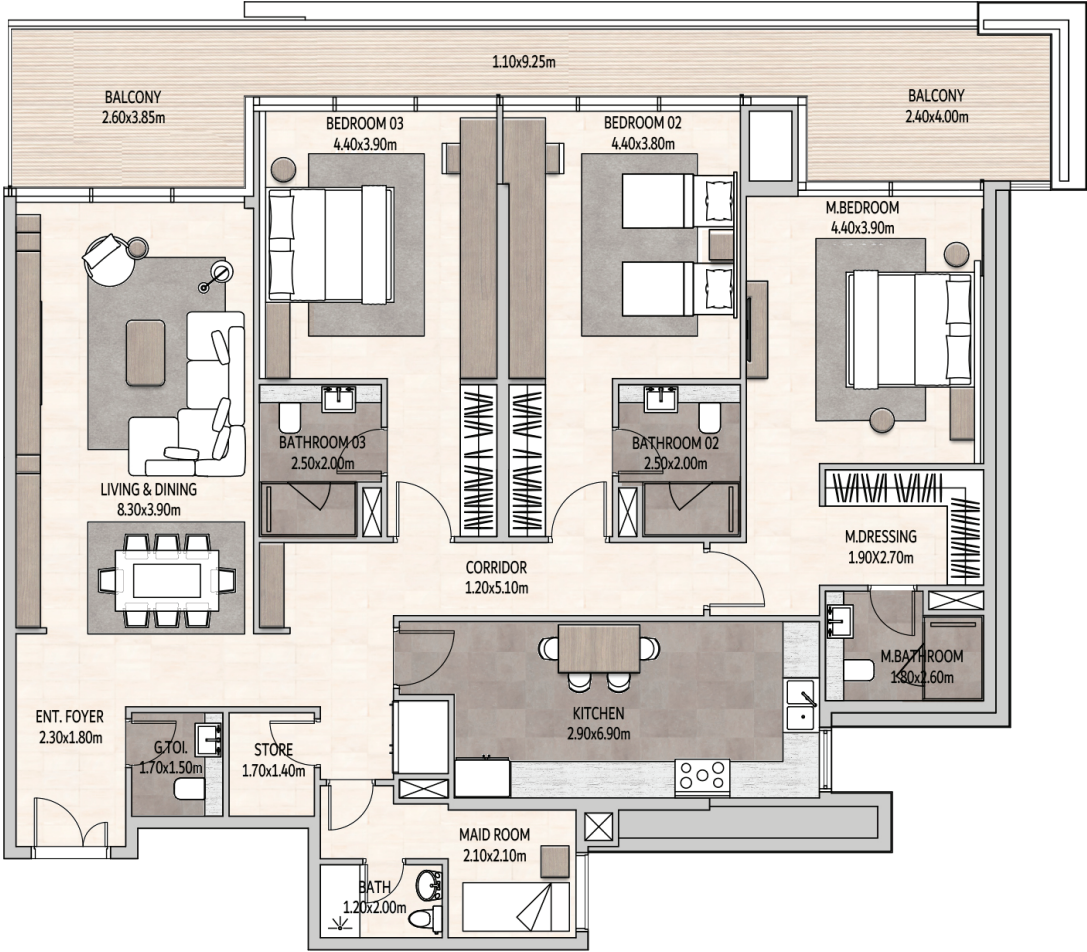
3 BEDROOM APARTMENT

TYPE 2

SUITE AREA	193.23 sqm
BALCONY AREA	30.93 sqm
TOTAL AREA	224.16 sqm



LEVEL: 1-10

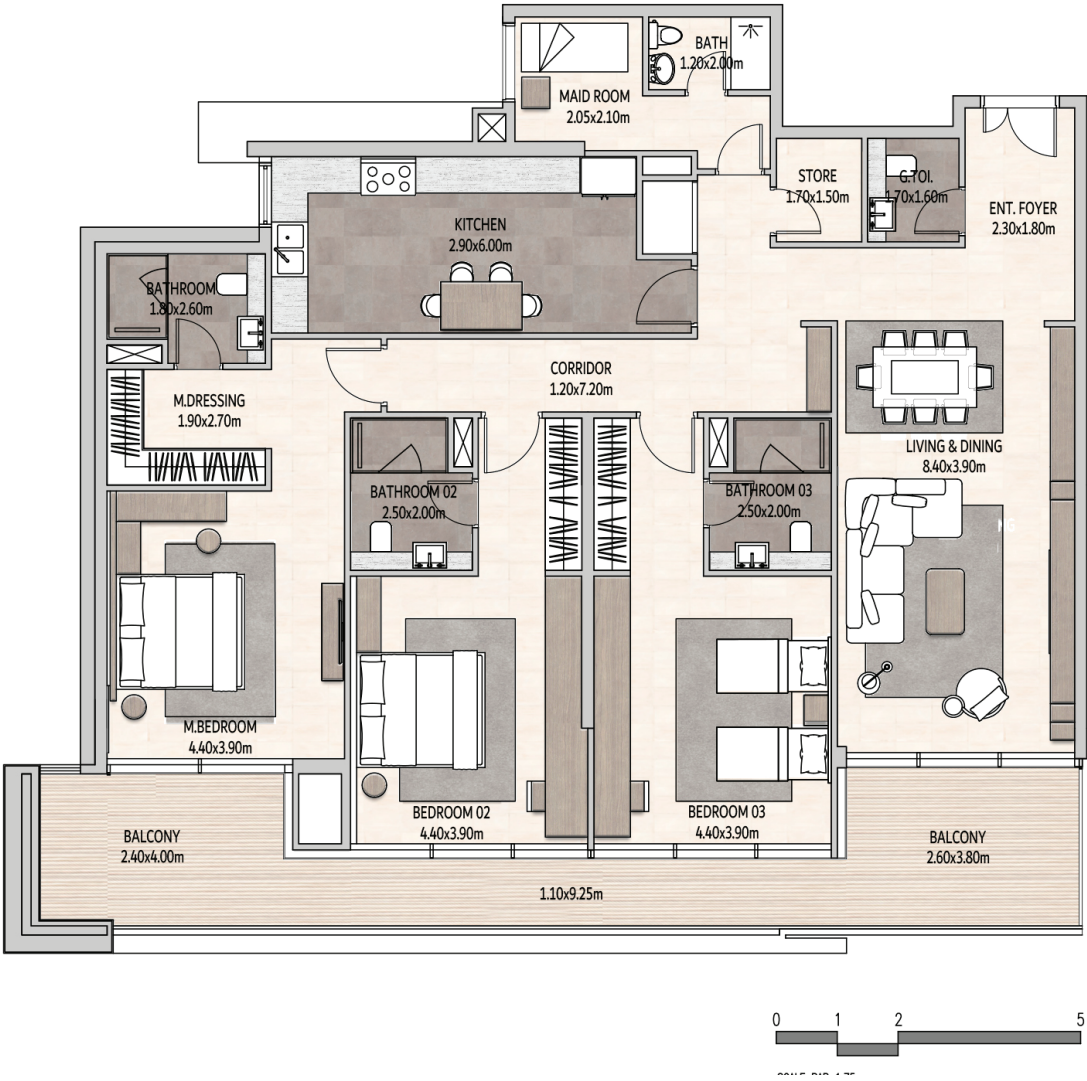
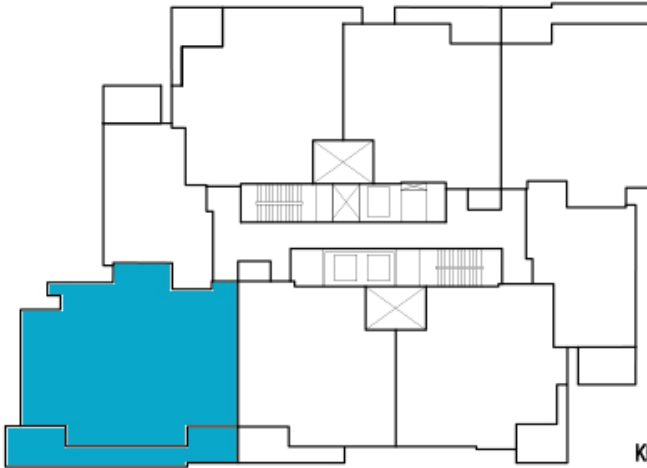


3 BEDROOM APARTMENT

TYPE 3

SUITE AREA	193.39 sqm
BALCONY AREA	30.93 sqm
TOTAL AREA	224.32 sqm

LEVEL: 1-10

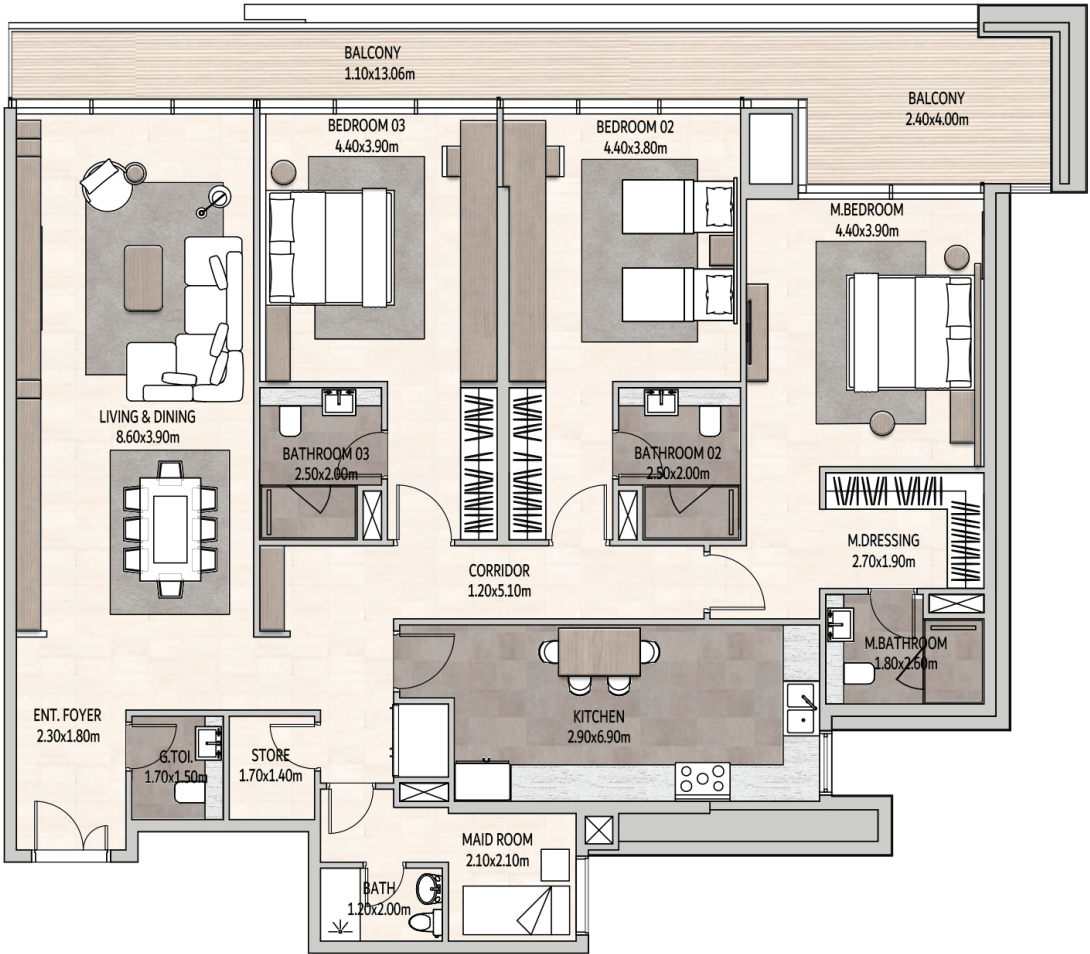
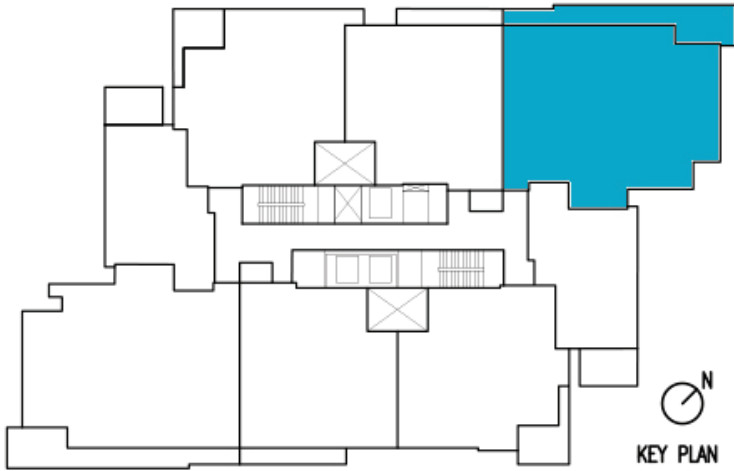


3 BEDROOM APARTMENT

TYPE 4

SUITE AREA	199.15 sqm
BALCONY AREA	25.11 sqm
TOTAL AREA	224.26 sqm

LEVEL: 11

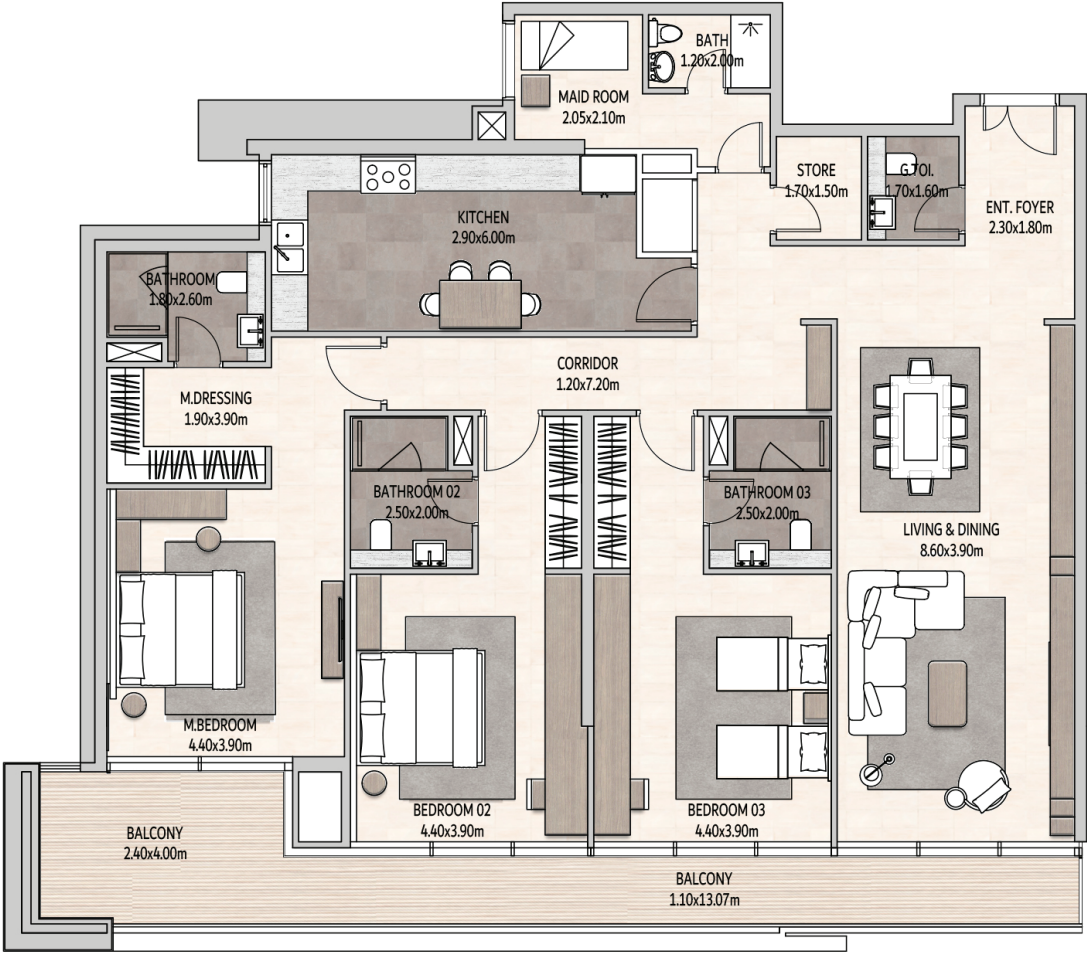
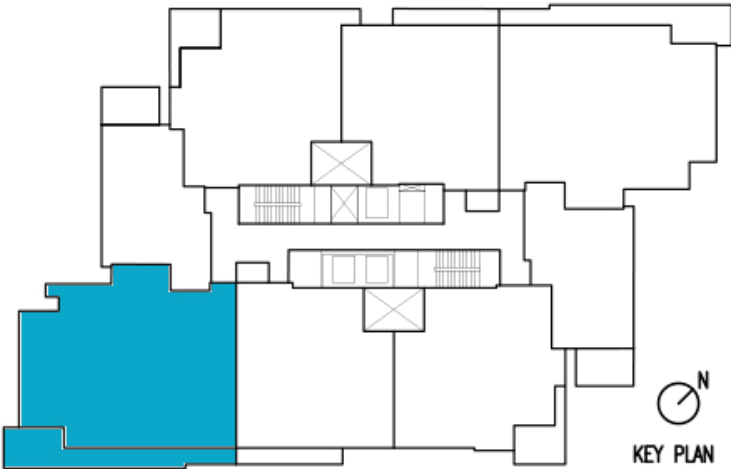


3 BEDROOM APARTMENT

TYPE 5

SUITE AREA	199.32 sqm
BALCONY AREA	25.11 sqm
TOTAL AREA	224.43 sqm

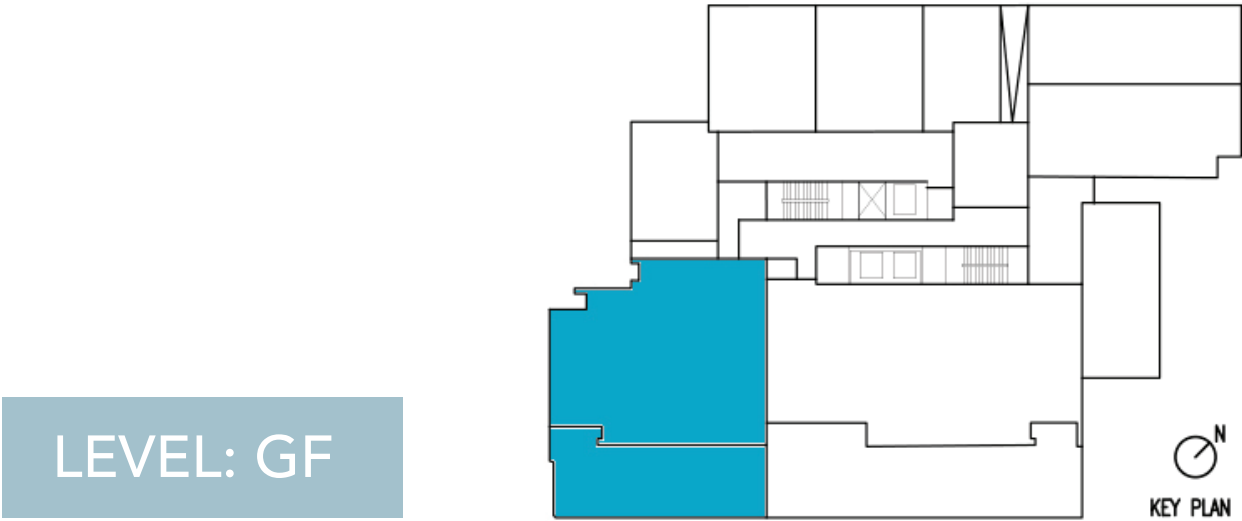
LEVEL: 11



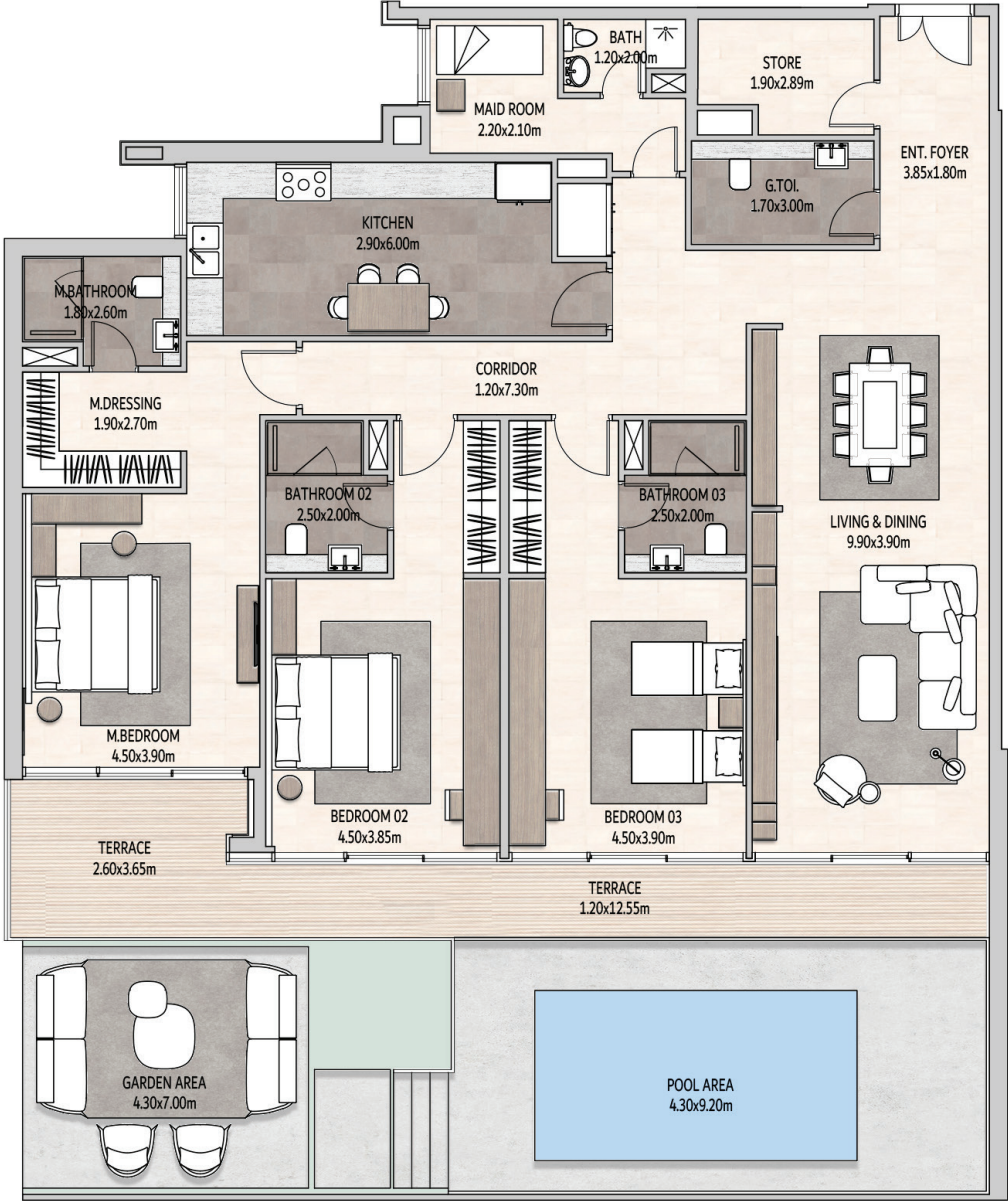
3 BEDROOM GROUND VILLA

TYPE 1

SUITE AREA	206.77 sqm
TERRACE AREA	25.85 sqm
GARDEN AREA	67.91 sqm
TOTAL AREA	300.53 sqm



LEVEL: GF

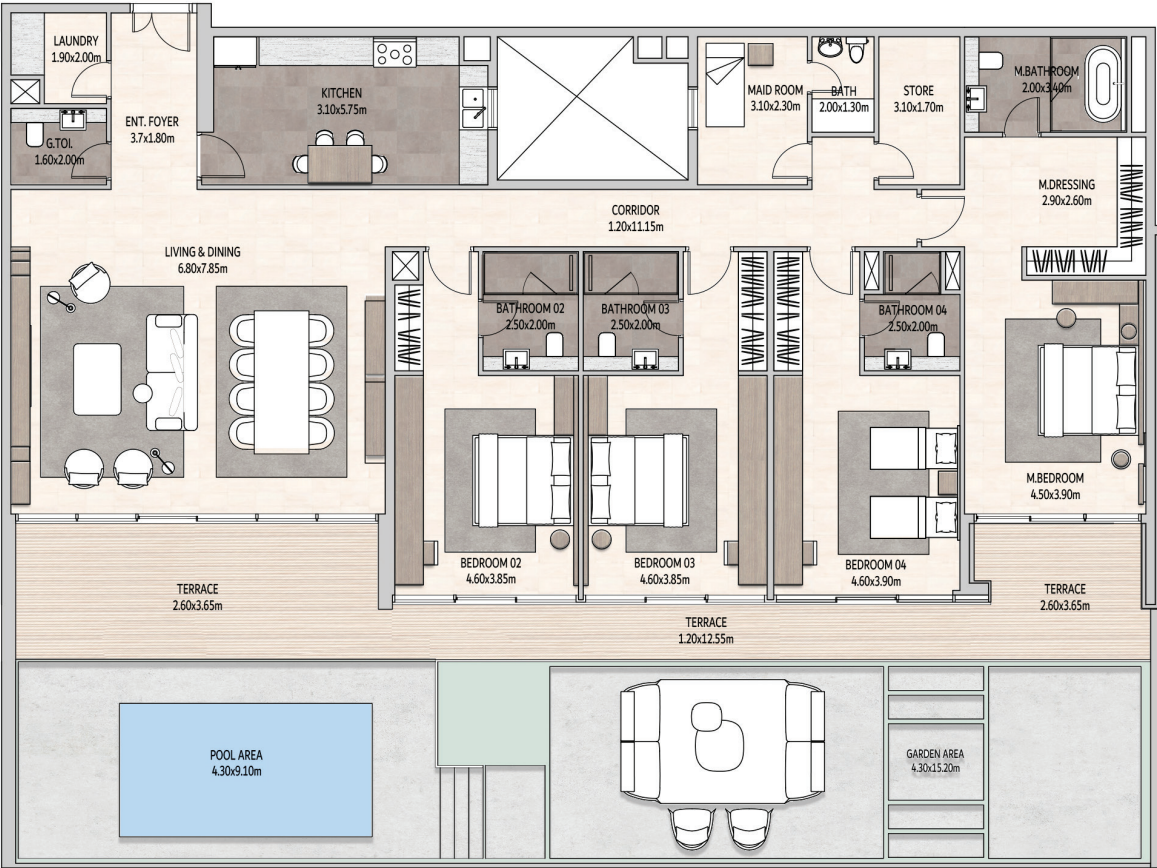
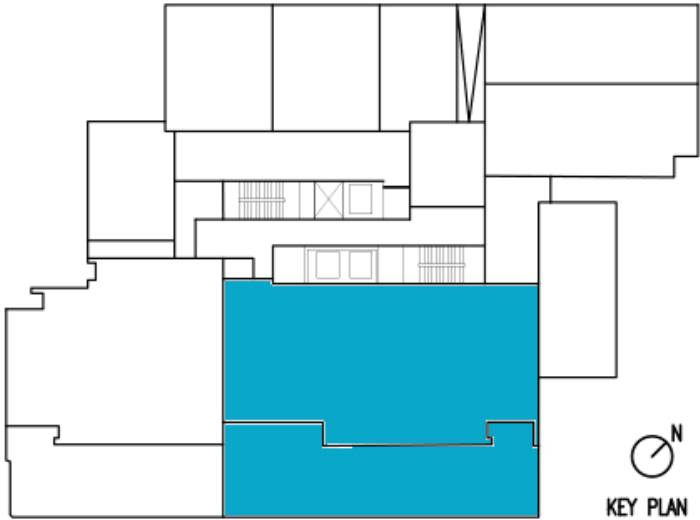


4 BEDROOM GROUND VILLA

TYPE 1

SUITE AREA	275.75 sqm
TERRACE AREA	46.21 sqm
GARDEN AREA	104.05 sqm
TOTAL AREA	426.01 sqm

LEVEL: GF





VISTA DEL MAR

YAS ISLAND

Office 2201, Control Tower,
Motor City Dubai,
UAE | P.O. Box 451939

Mob: +971 58 102 5758
Email: info@evadxb.com
www.evadxb.com

EVA
REAL
ESTATE

