

NEEM

AT PARKFIVE

UNIT PLANS





STUDIO





NEEM

PARKFIVE

TYPE

01 STUDIO

INTERIOR	TOTAL
347 SQ.FT.	430 SQ.FT.

EXTERIOR	FLOORS
84 SQ.FT.	2-5

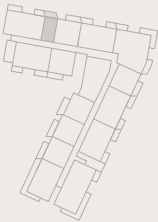
BOULEVARD / LAKE VIEW



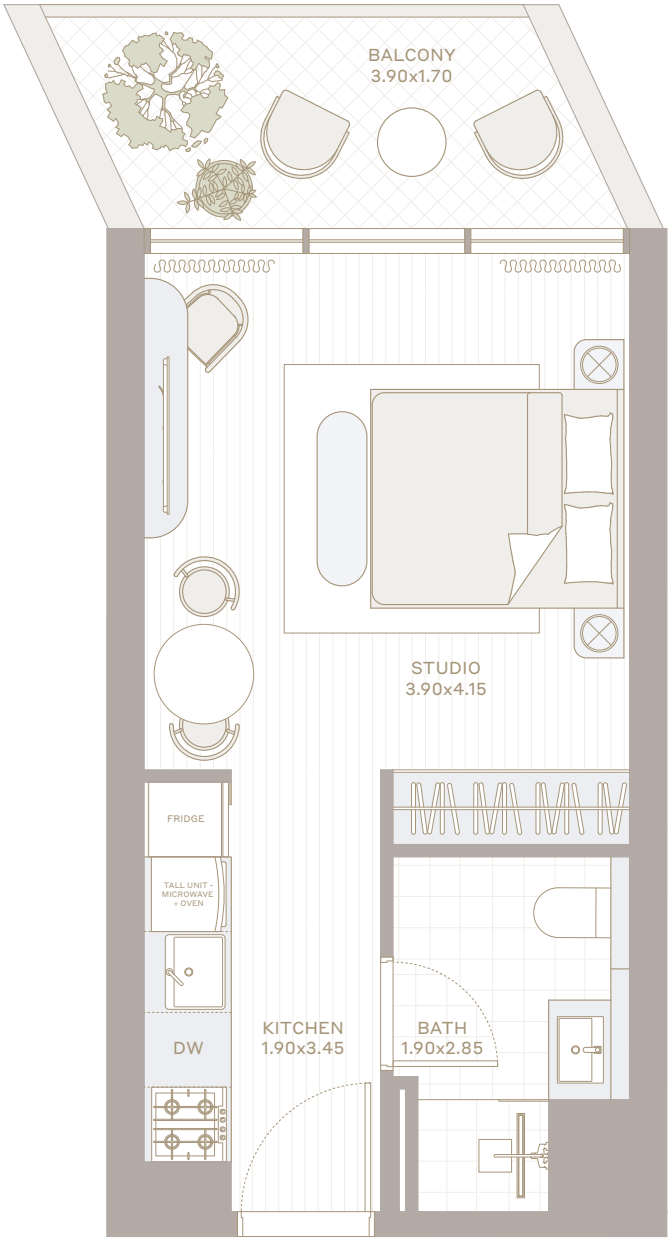
POOL & GARDEN
VIEW

BOULEVARD /
COMMUNITY
PARK VIEW

LEVEL 2-5



CENTRAL PARK



All the dimensions are in square feet. The Unit shown is typical, and actual Unit may vary in dimensions, areas, layout, material specification, orientation, and location. Some of the Units may have a mirrored layout of the above plan. Unit Windows, Façade, Balcony door location, Fixtures, Kitchen Cabinets, Sanitary ware, and Wardrobes, including each of their location as shown in the plan is indicative and subject to revision by the Seller. All fixtures, fittings, goods, accessories, and furniture reflected/displayed in this plan(s) are strictly illustrative and representational (not actual) in nature and are only for the purpose of illustrating /reflecting one of the possible layouts which the Purchaser could arrange after the Unit is handed over and do not form part of the Unit. No furniture, goods, accessories are included in the sale, unless such items are specifically included in Schedule A of the SPA.



1 BEDROOM





TYPE

01

1 BHK

INTERIOR	TOTAL
652 SQ.FT.	760 SQ.FT.

EXTERIOR	FLOORS
108 SQ.FT.	2-10

BOULEVARD / LAKE VIEW



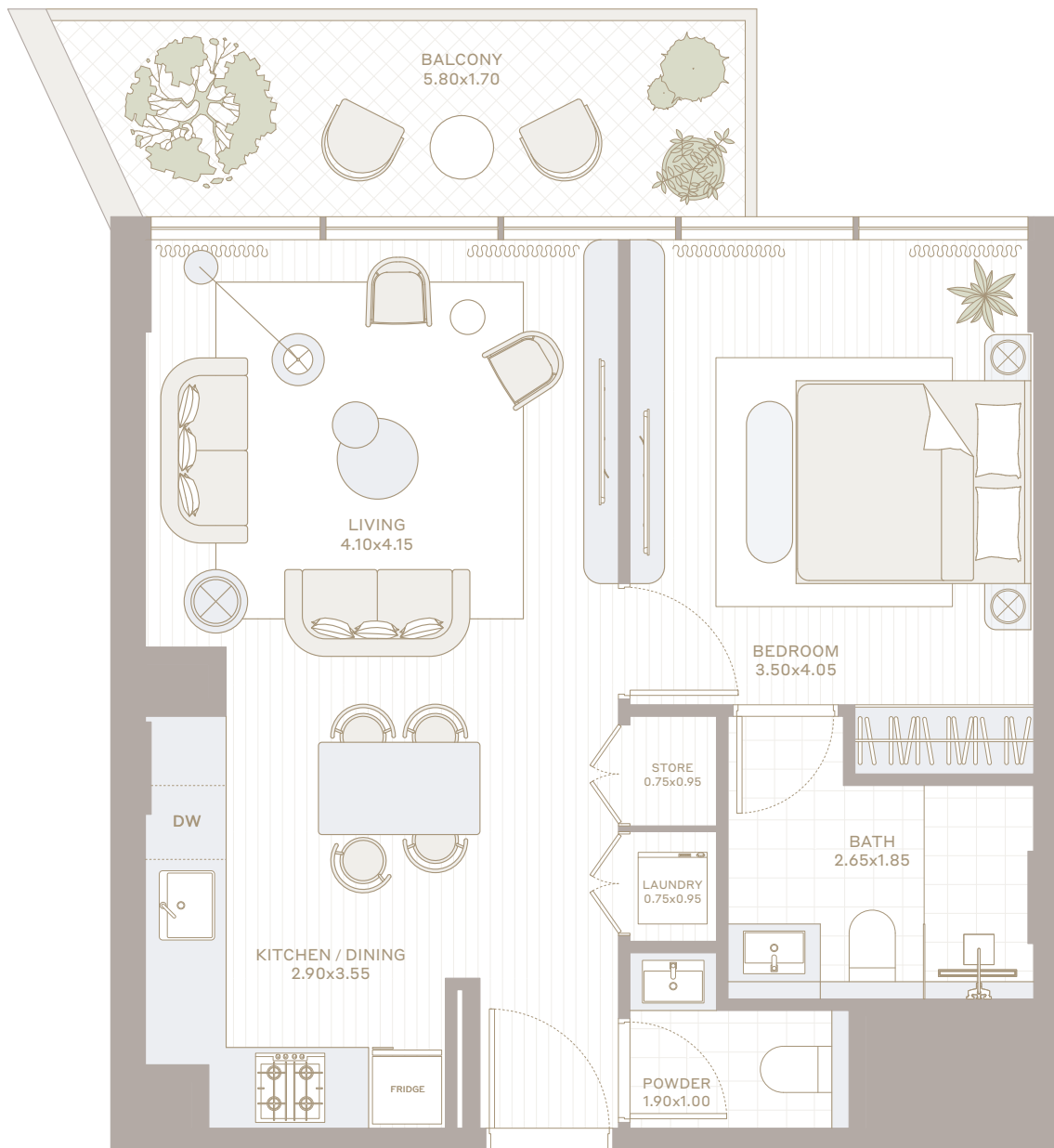
POOL & GARDEN
VIEW

LEVEL 2-5

BOULEVARD /
COMMUNITY
PARK VIEW

CENTRAL PARK

LEVEL 6-10



All the dimensions are in square feet. The Unit shown is typical, and actual Unit may vary in dimensions, areas, layout, material specification, orientation, and location. Some of the Units may have a mirrored layout of the above plan. Unit Windows, Façade, Balcony door location, Fixtures, Kitchen Cabinets, Sanitary ware, and Wardrobes, including each of their location as shown in the plan is indicative and subject to revision by the Seller. All fixtures, fittings, goods, accessories, and furniture reflected/displayed in this plan(s) are strictly illustrative and representational (not actual) in nature and are only for the purpose of illustrating /reflecting one of the possible layouts which the Purchaser could arrange after the Unit is handed over and do not form part of the Unit. No furniture, goods, accessories are included in the sale, unless such items are specifically included in Schedule A of the SPA.



TYPE

02

1 BHK

INTERIOR
666 SQ.FT.

TOTAL
777 SQ.FT.

EXTERIOR
112 SQ.FT.

FLOORS
1-11

BOULEVARD / LAKE VIEW



POOL & GARDEN
VIEW

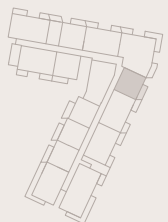
BOULEVARD /
COMMUNITY
PARK VIEW

LEVEL 1

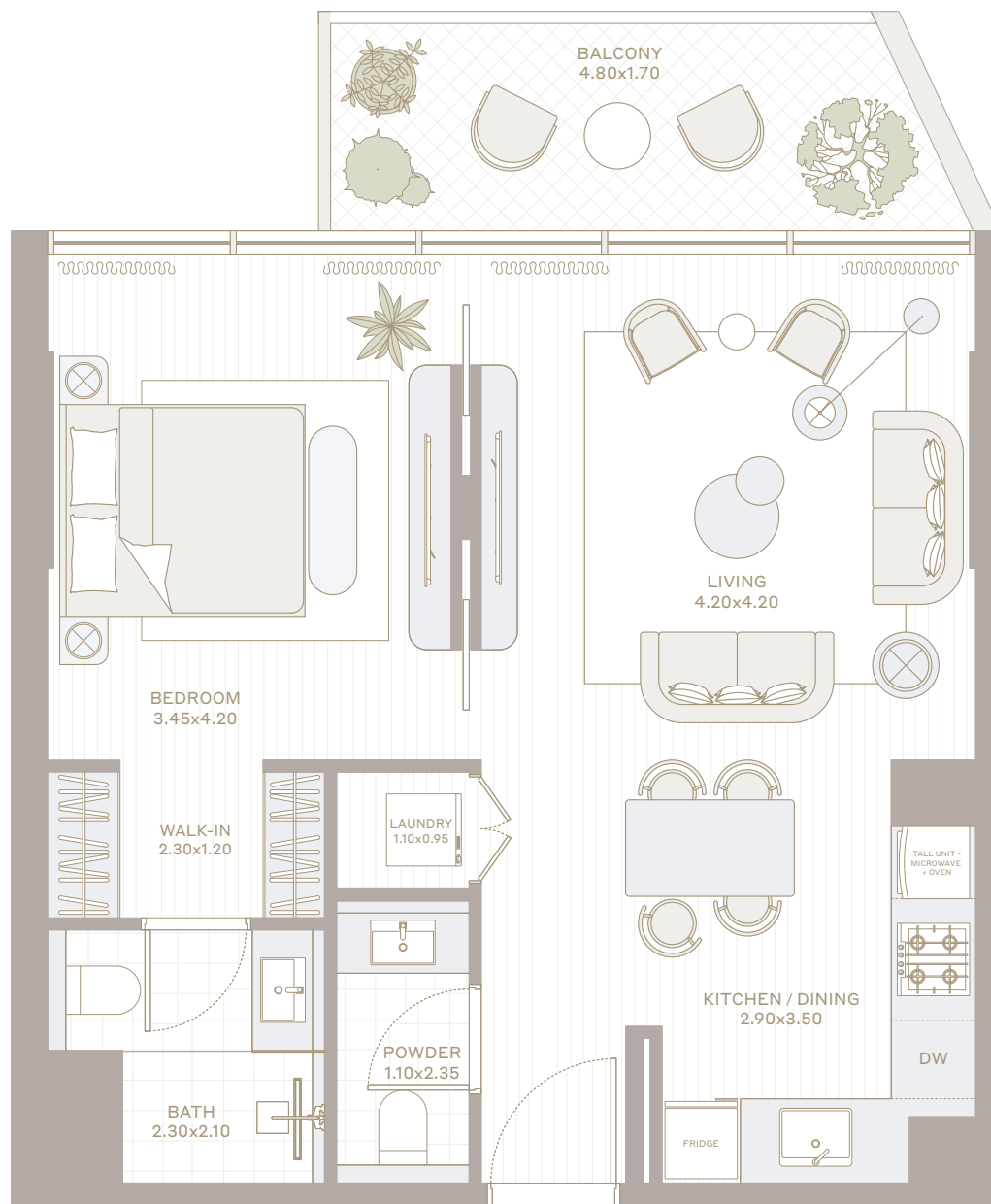
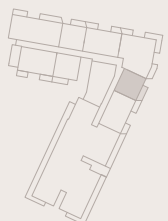


CENTRAL PARK

LEVEL 2-10



LEVEL 11



All the dimensions are in square feet. The Unit shown is typical, and actual Unit may vary in dimensions, areas, layout, material specification, orientation, and location. Some of the Units may have a mirrored layout of the above plan. Unit Windows, Façade, Balcony door location, Fixtures, Kitchen Cabinets, Sanitary ware, and Wardrobes, including each of their location as shown in the plan is indicative and subject to revision by the Seller. All fixtures, fittings, goods, accessories, and furniture reflected/displayed in this plan(s) are strictly illustrative and representational (not actual) in nature and are only for the purpose of illustrating /reflecting one of the possible layouts which the Purchaser could arrange after the Unit is handed over and do not form part of the Unit. No furniture, goods, accessories are included in the sale, unless such items are specifically included in Schedule A of the SPA.



TYPE

03

1 BHK

INTERIOR
663 SQ.FT.

TOTAL
768 SQ.FT.

EXTERIOR
105 SQ.FT.

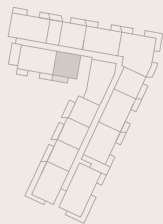
FLOORS
2-11

BOULEVARD / LAKE VIEW



POOL & GARDEN
VIEW

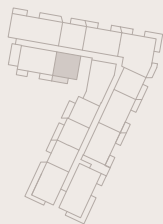
LEVEL 2-5



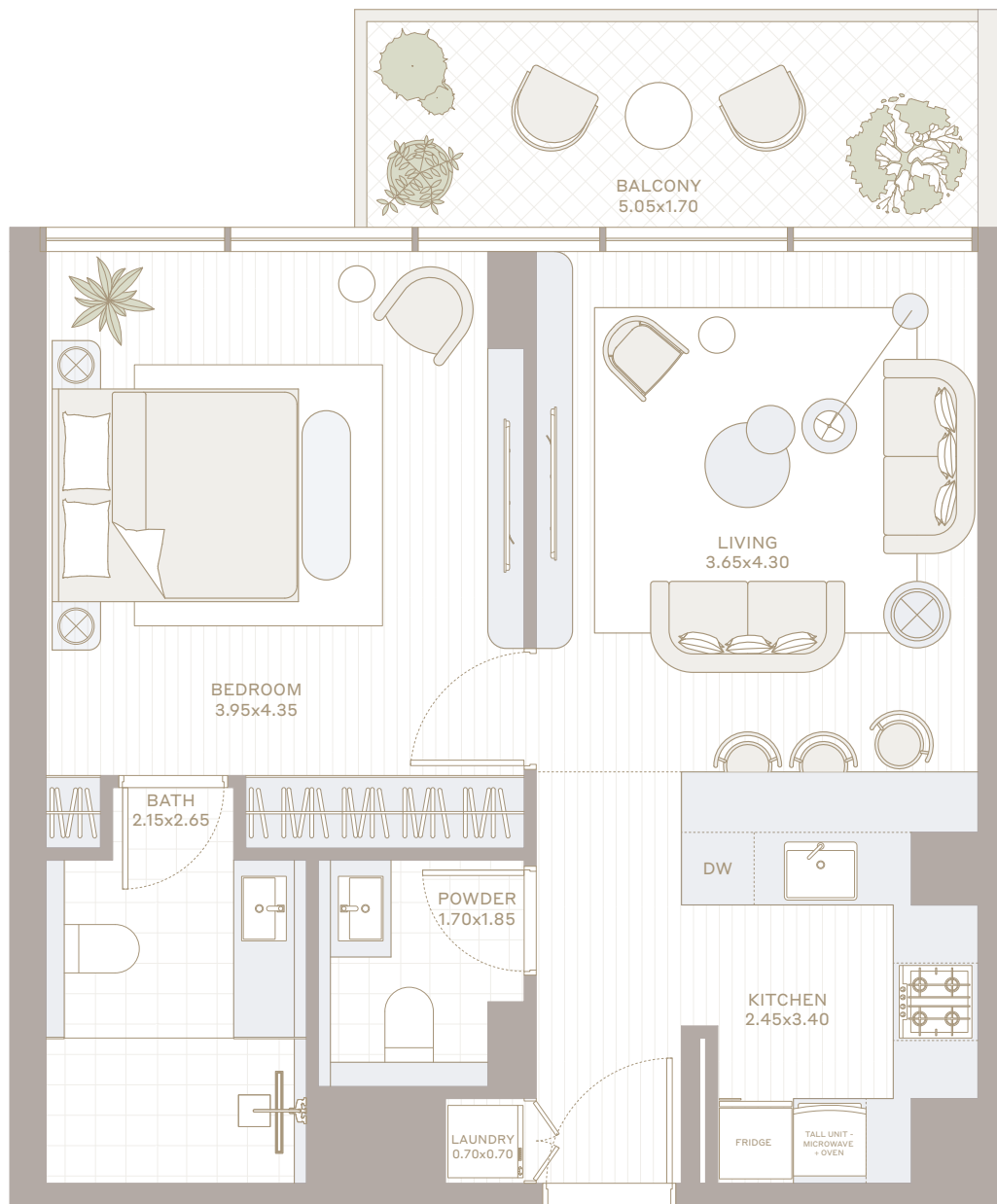
BOULEVARD /
COMMUNITY
PARK VIEW

CENTRAL PARK

LEVEL 6-10



LEVEL 11



All the dimensions are in square feet. The Unit shown is typical, and actual Unit may vary in dimensions, areas, layout, material specification, orientation, and location. Some of the Units may have a mirrored layout of the above plan. Unit Windows, Façade, Balcony door location, Fixtures, Kitchen Cabinets, Sanitary ware, and Wardrobes, including each of their location as shown in the plan is indicative and subject to revision by the Seller. All fixtures, fittings, goods, accessories, and furniture reflected/displayed in this plan(s) are strictly illustrative and representational (not actual) in nature and are only for the purpose of illustrating /reflecting one of the possible layouts which the Purchaser could arrange after the Unit is handed over and do not form part of the Unit. No furniture, goods, accessories are included in the sale, unless such items are specifically included in Schedule A of the SPA.



TYPE

04

1 BHK

INTERIOR	TOTAL
657 SQ.FT.	758 SQ.FT.

EXTERIOR	FLOORS
101 SQ.FT.	2-11

BOULEVARD / LAKE VIEW



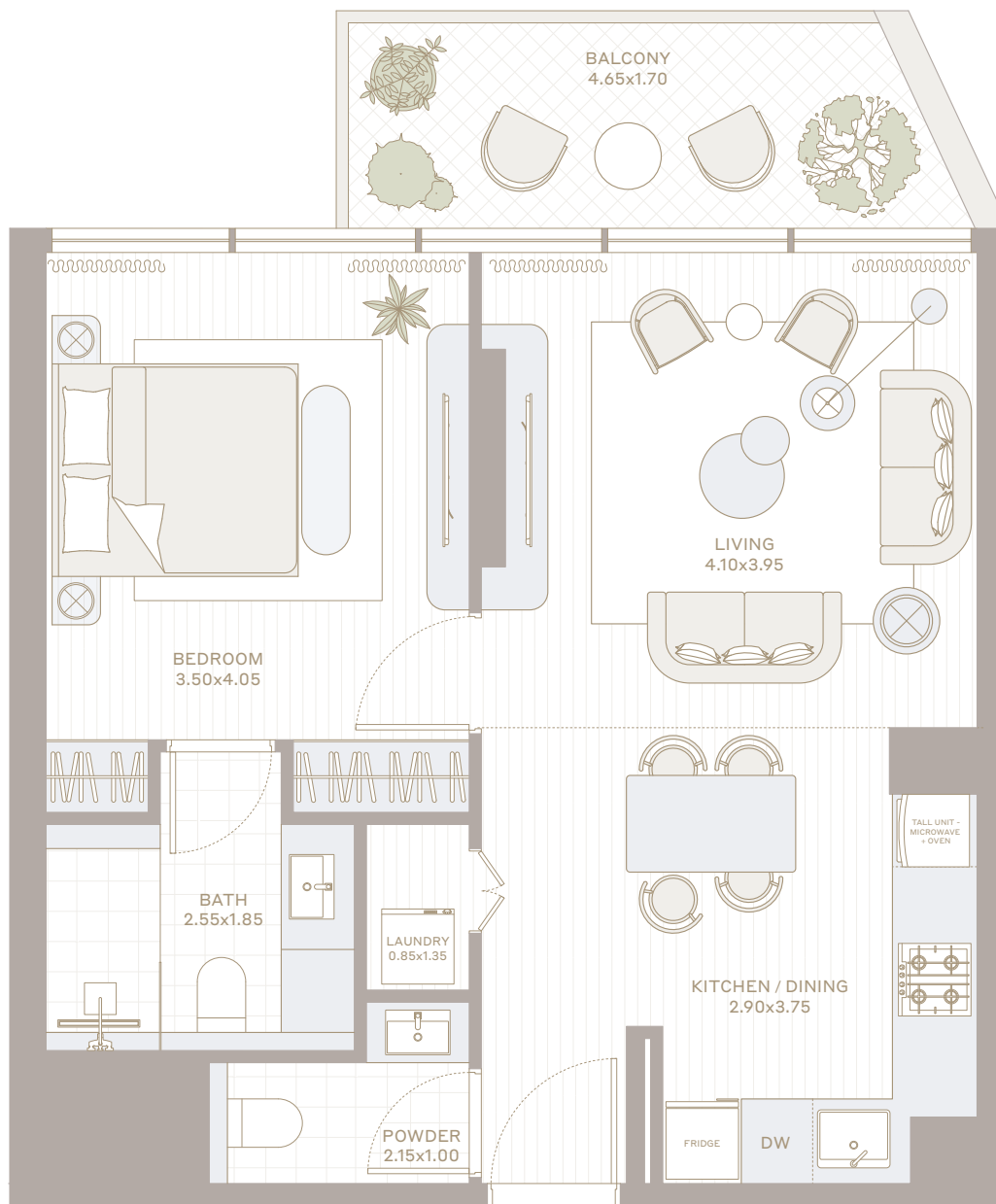
POOL & GARDEN
VIEW

BOULEVARD /
COMMUNITY
PARK VIEW

LEVEL 2-10

CENTRAL PARK

LEVEL 11



All the dimensions are in square feet. The Unit shown is typical, and actual Unit may vary in dimensions, areas, layout, material specification, orientation, and location. Some of the Units may have a mirrored layout of the above plan. Unit Windows, Façade, Balcony door location, Fixtures, Kitchen Cabinets, Sanitary ware, and Wardrobes, including each of their location as shown in the plan is indicative and subject to revision by the Seller. All fixtures, fittings, goods, accessories, and furniture reflected/displayed in this plan(s) are strictly illustrative and representational (not actual) in nature and are only for the purpose of illustrating /reflecting one of the possible layouts which the Purchaser could arrange after the Unit is handed over and do not form part of the Unit. No furniture, goods, accessories are included in the sale, unless such items are specifically included in Schedule A of the SPA.



TYPE

4T

1 BHK

INTERIOR	TOTAL
657 SQ.FT.	904 SQ.FT.

EXTERIOR	FLOORS
247 SQ.FT.	1

BOULEVARD / LAKE VIEW



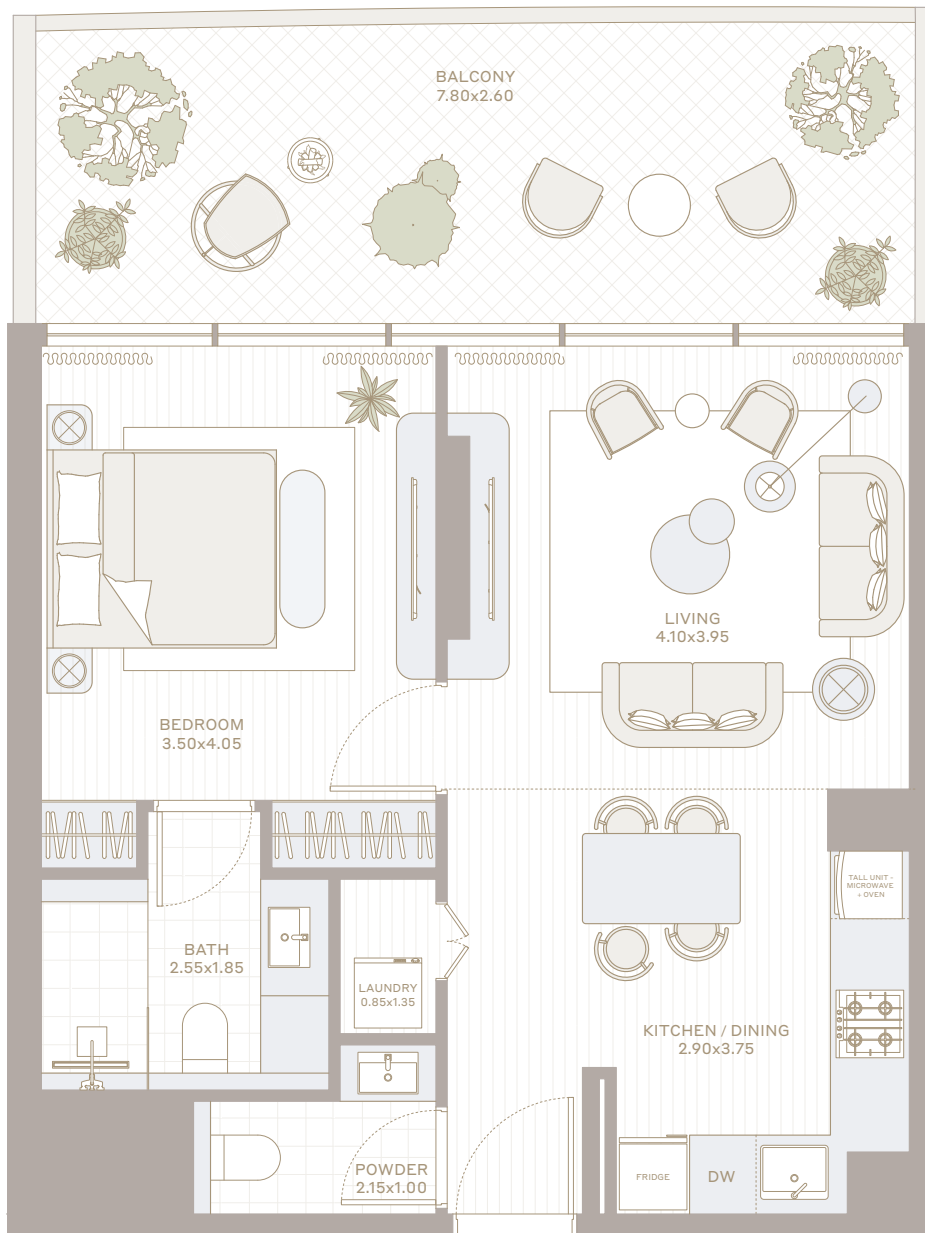
POOL & GARDEN
VIEW

BOULEVARD /
COMMUNITY
PARK VIEW

LEVEL 1



CENTRAL PARK



All the dimensions are in square feet. The Unit shown is typical, and actual Unit may vary in dimensions, areas, layout, material specification, orientation, and location. Some of the Units may have a mirrored layout of the above plan. Unit Windows, Façade, Balcony door location, Fixtures, Kitchen Cabinets, Sanitary ware, and Wardrobes, including each of their location as shown in the plan is indicative and subject to revision by the Seller. All fixtures, fittings, goods, accessories, and furniture reflected/displayed in this plan(s) are strictly illustrative and representational (not actual) in nature and are only for the purpose of illustrating /reflecting one of the possible layouts which the Purchaser could arrange after the Unit is handed over and do not form part of the Unit. No furniture, goods, accessories are included in the sale, unless such items are specifically included in Schedule A of the SPA.



TYPE

05

1 BHK

INTERIOR	TOTAL
628 SQ.FT.	764 SQ.FT.

EXTERIOR	FLOORS
136 SQ.FT.	2-10

BOULEVARD / LAKE VIEW



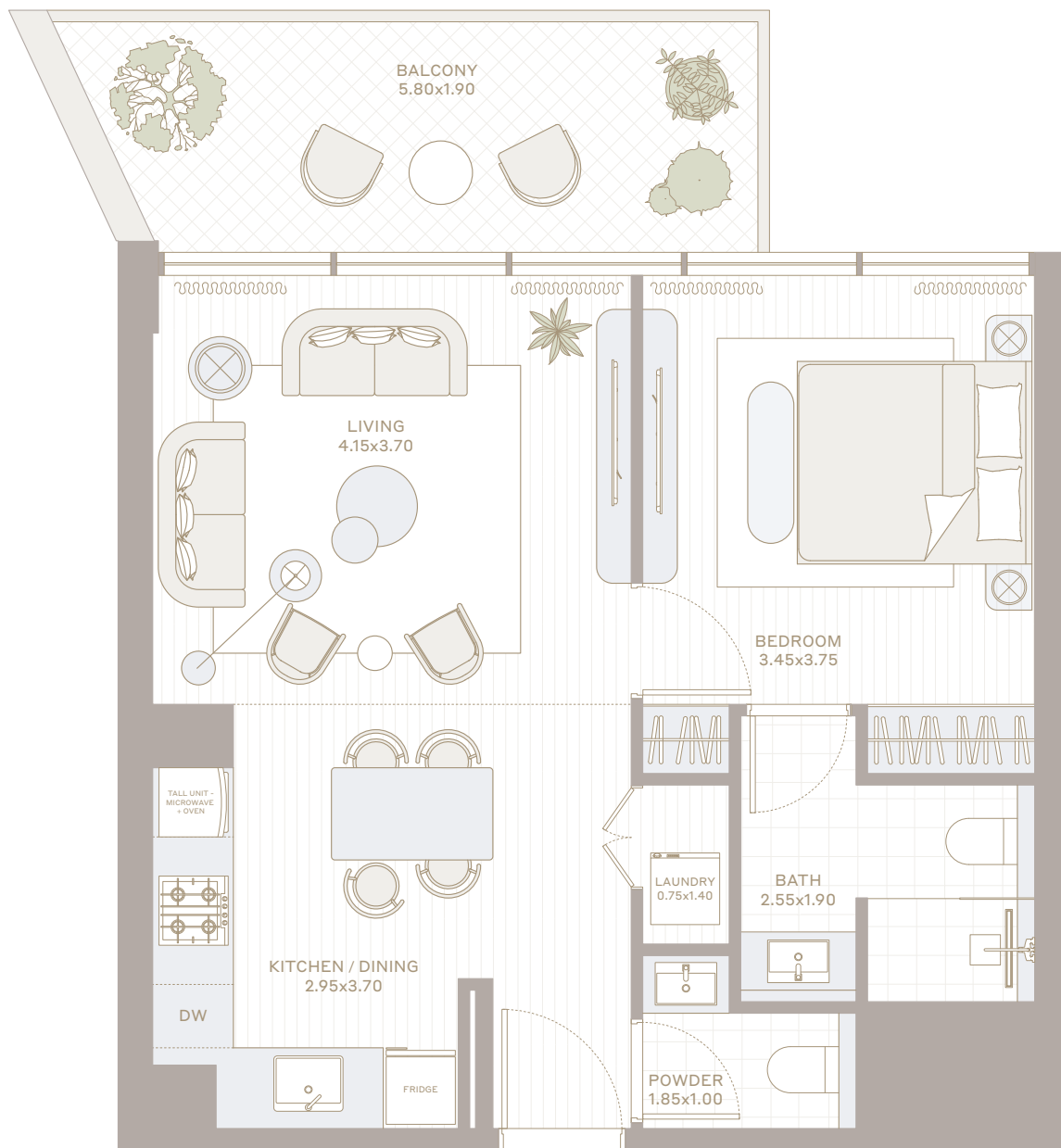
POOL & GARDEN
VIEW

LEVEL 2-5

BOULEVARD /
COMMUNITY
PARK VIEW

CENTRAL PARK

LEVEL 6-10



All the dimensions are in square feet. The Unit shown is typical, and actual Unit may vary in dimensions, areas, layout, material specification, orientation, and location. Some of the Units may have a mirrored layout of the above plan. Unit Windows, Façade, Balcony door location, Fixtures, Kitchen Cabinets, Sanitary ware, and Wardrobes, including each of their location as shown in the plan is indicative and subject to revision by the Seller. All fixtures, fittings, goods, accessories, and furniture reflected/displayed in this plan(s) are strictly illustrative and representational (not actual) in nature and are only for the purpose of illustrating /reflecting one of the possible layouts which the Purchaser could arrange after the Unit is handed over and do not form part of the Unit. No furniture, goods, accessories are included in the sale, unless such items are specifically included in Schedule A of the SPA.

2 BEDROOM





TYPE

01

2 BHK

INTERIOR
1,048 SQ.FT.

TOTAL
1,210 SQ.FT.

EXTERIOR
161 SQ.FT.

FLOORS
2-5

BOULEVARD / LAKE VIEW

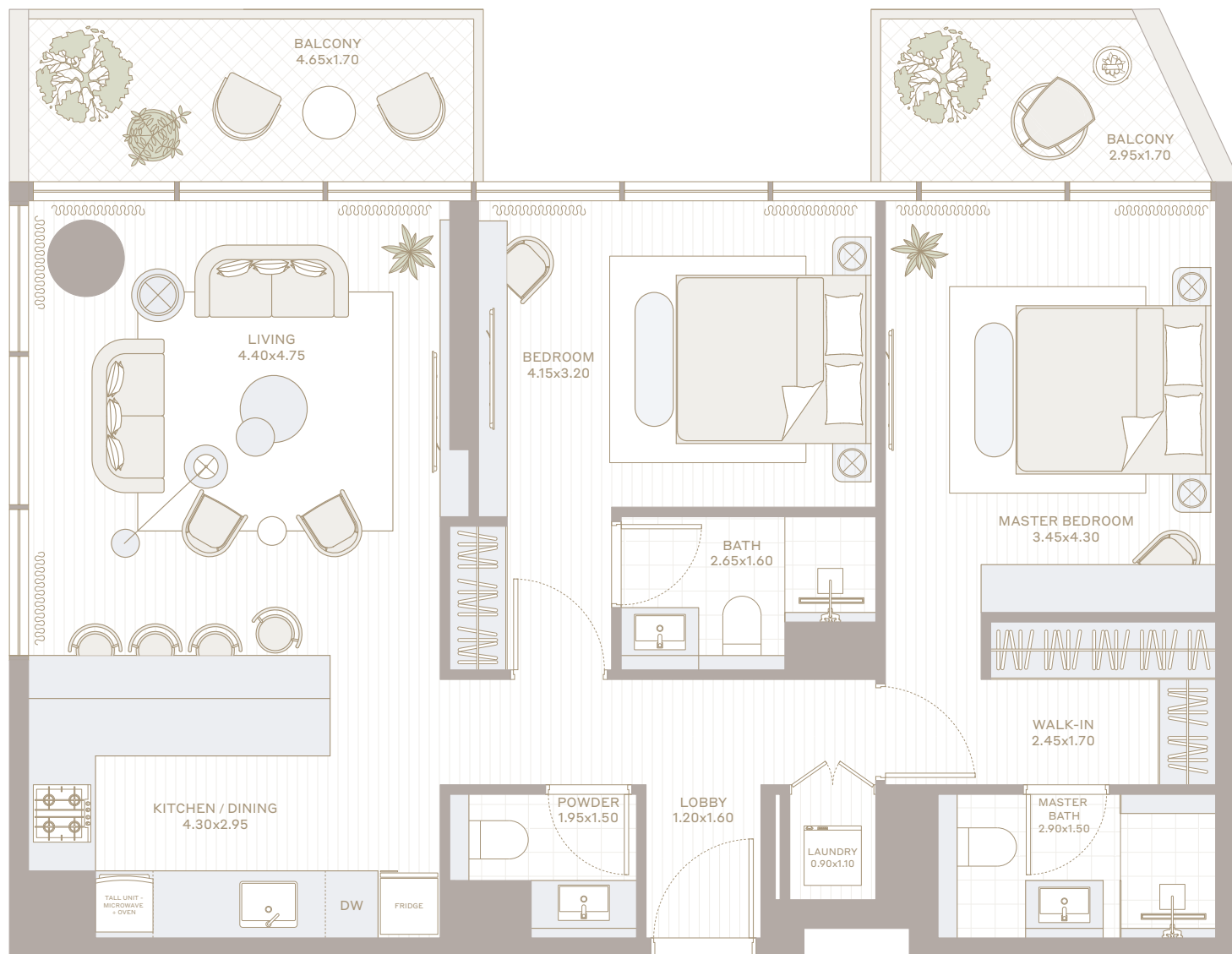
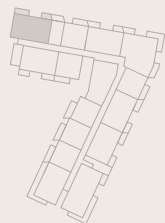


POOL & GARDEN
VIEW

BOULEVARD /
COMMUNITY
PARK VIEW

LEVEL 2-5

CENTRAL PARK



All the dimensions are in square feet. The Unit shown is typical, and actual Unit may vary in dimensions, areas, layout, material specification, orientation, and location. Some of the Units may have a mirrored layout of the above plan. Unit Windows, Façade, Balcony door location, Fixtures, Kitchen Cabinets, Sanitary ware, and Wardrobes, including each of their location as shown in the plan is indicative and subject to revision by the Seller. All fixtures, fittings, goods, accessories, and furniture reflected/displayed in this plan(s) are strictly illustrative and representational (not actual) in nature and are only for the purpose of illustrating /reflecting one of the possible layouts which the Purchaser could arrange after the Unit is handed over and do not form part of the Unit. No furniture, goods, accessories are included in the sale, unless such items are specifically included in Schedule A of the SPA.



TYPE

02

2 BHK

INTERIOR
978 SQ.FT.

TOTAL
1,125 SQ.FT.

EXTERIOR
147 SQ.FT.

FLOORS
2-11

BOULEVARD / LAKE VIEW



POOL & GARDEN
VIEW

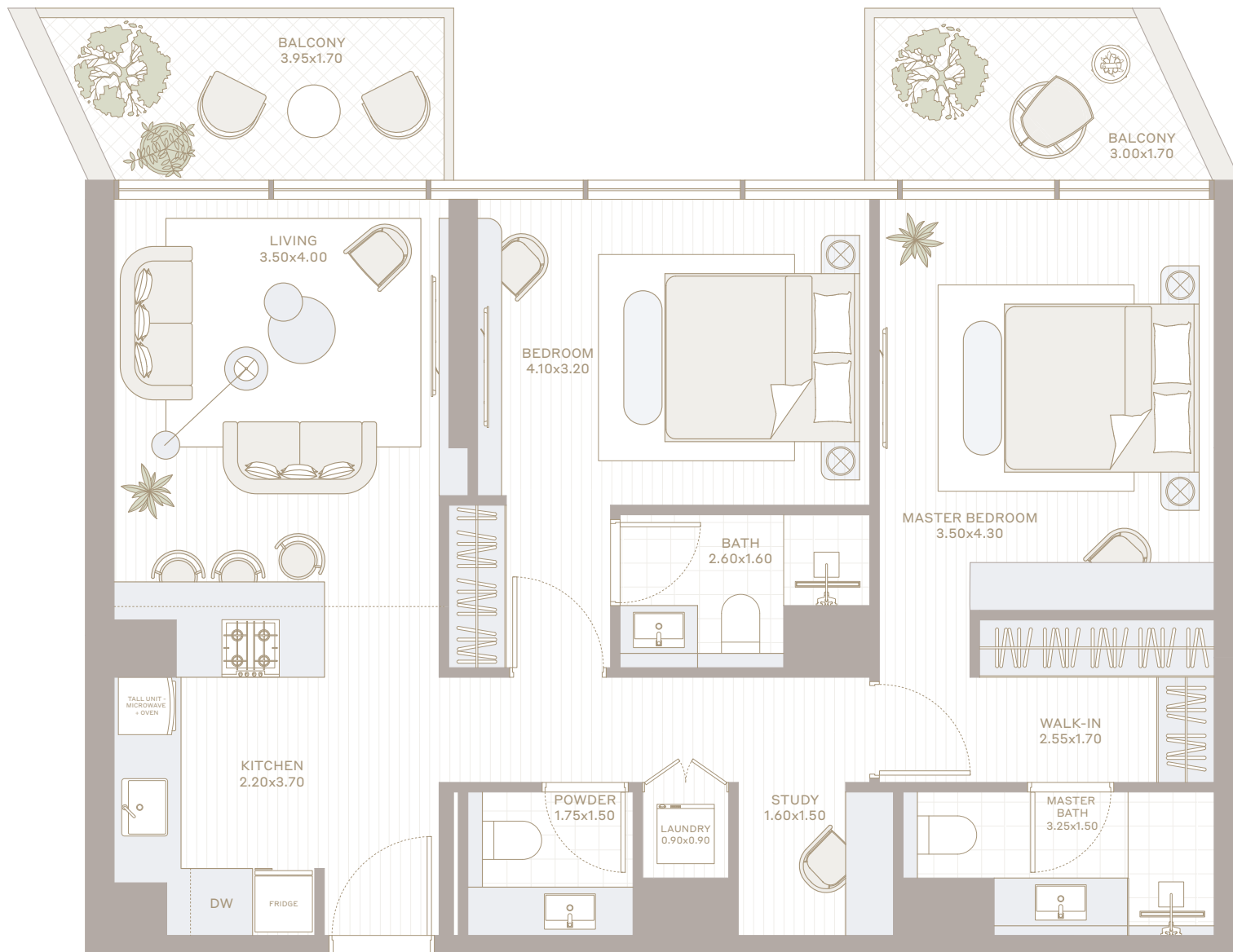
BOULEVARD /
COMMUNITY
PARK VIEW

LEVEL 2-5

CENTRAL PARK

LEVEL 6-10

LEVEL 11



All the dimensions are in square feet. The Unit shown is typical, and actual Unit may vary in dimensions, areas, layout, material specification, orientation, and location. Some of the Units may have a mirrored layout of the above plan. Unit Windows, Façade, Balcony door location, Fixtures, Kitchen Cabinets, Sanitary ware, and Wardrobes, including each of their location as shown in the plan is indicative and subject to revision by the Seller. All fixtures, fittings, goods, accessories, and furniture reflected/displayed in this plan(s) are strictly illustrative and representational (not actual) in nature and are only for the purpose of illustrating /reflecting one of the possible layouts which the Purchaser could arrange after the Unit is handed over and do not form part of the Unit. No furniture, goods, accessories are included in the sale, unless such items are specifically included in Schedule A of the SPA.



TYPE

2T

2 BHK

INTERIOR	TOTAL
978 SQ.FT.	1,330 SQ.FT.

EXTERIOR	FLOORS
352 SQ.FT.	1

BOULEVARD / LAKE VIEW



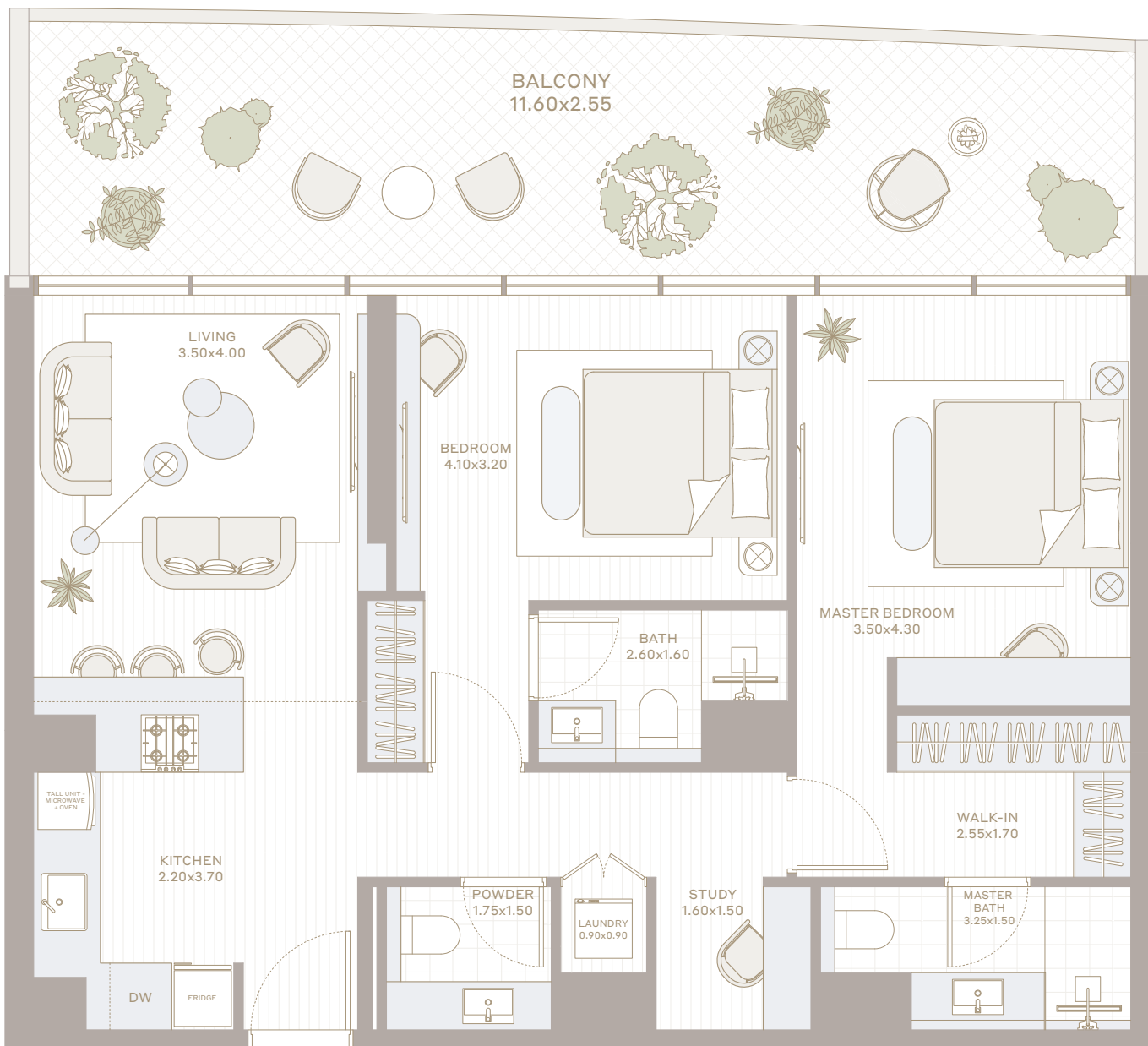
POOL & GARDEN
VIEW

BOULEVARD /
COMMUNITY
PARK VIEW

LEVEL 1



CENTRAL PARK



All the dimensions are in square feet. The Unit shown is typical, and actual Unit may vary in dimensions, areas, layout, material specification, orientation, and location. Some of the Units may have a mirrored layout of the above plan. Unit Windows, Façade, Balcony door location, Fixtures, Kitchen Cabinets, Sanitary ware, and Wardrobes, including each of their location as shown in the plan is indicative and subject to revision by the Seller. All fixtures, fittings, goods, accessories, and furniture reflected/displayed in this plan(s) are strictly illustrative and representational (not actual) in nature and are only for the purpose of illustrating /reflecting one of the possible layouts which the Purchaser could arrange after the Unit is handed over and do not form part of the Unit. No furniture, goods, accessories are included in the sale, unless such items are specifically included in Schedule A of the SPA.



TYPE

03

2 BHK

INTERIOR
992 SQ.FT.

TOTAL
1,148 SQ.FT.

EXTERIOR
156 SQ.FT.

FLOORS
2-11

BOULEVARD / LAKE VIEW



POOL & GARDEN
VIEW

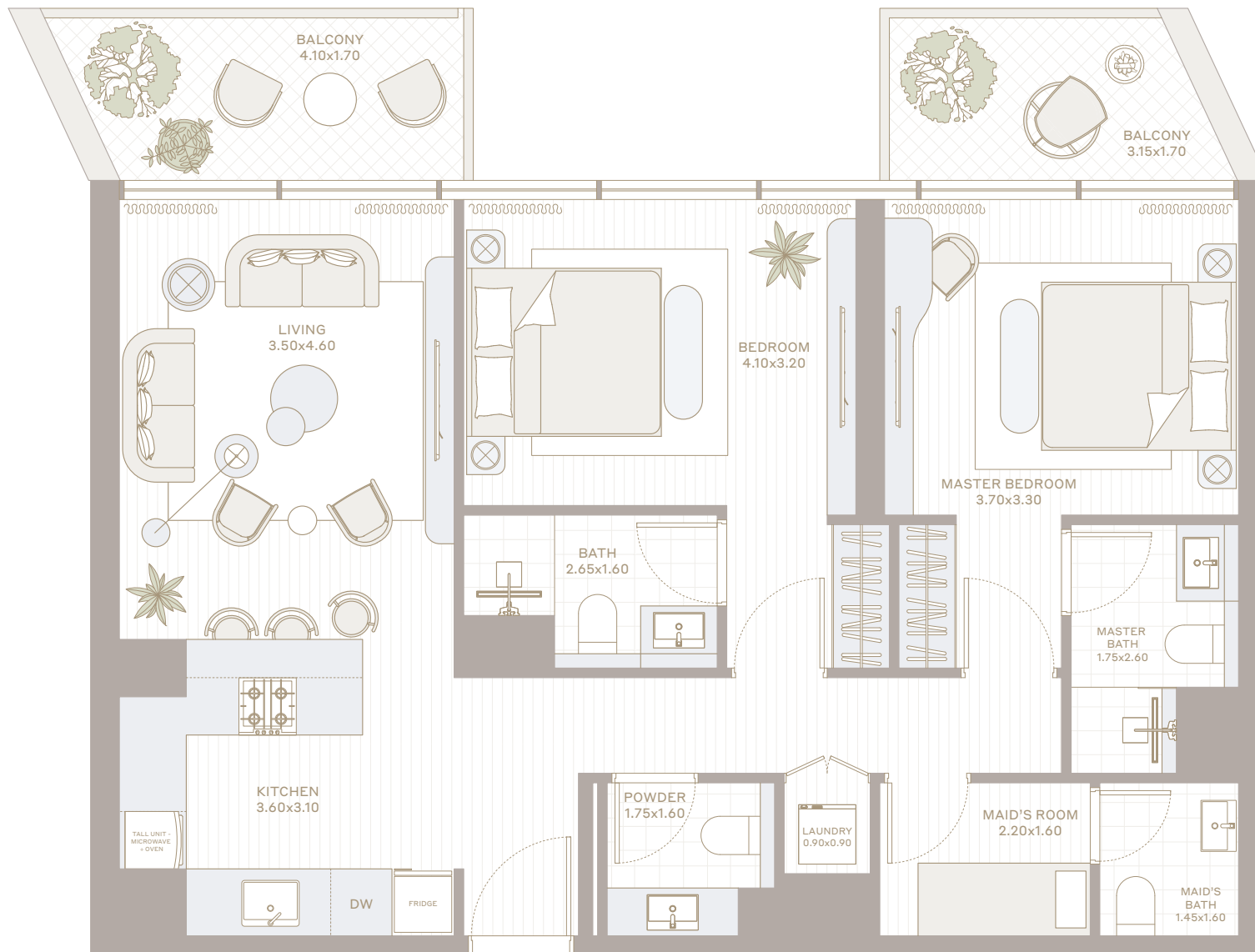
BOULEVARD /
COMMUNITY
PARK VIEW

LEVEL 2-5

CENTRAL PARK

LEVEL 6-10

LEVEL 11



All the dimensions are in square feet. The Unit shown is typical, and actual Unit may vary in dimensions, areas, layout, material specification, orientation, and location. Some of the Units may have a mirrored layout of the above plan. Unit Windows, Façade, Balcony door location, Fixtures, Kitchen Cabinets, Sanitary ware, and Wardrobes, including each of their location as shown in the plan is indicative and subject to revision by the Seller. All fixtures, fittings, goods, accessories, and furniture reflected/displayed in this plan(s) are strictly illustrative and representational (not actual) in nature and are only for the purpose of illustrating /reflecting one of the possible layouts which the Purchaser could arrange after the Unit is handed over and do not form part of the Unit. No furniture, goods, accessories are included in the sale, unless such items are specifically included in Schedule A of the SPA.



TYPE

04

2 BHK

INTERIOR
999 SQ.FT. TOTAL
1,335 SQ.FT.

EXTERIOR
336 SQ.FT. FLOORS
2-10

BOULEVARD / LAKE VIEW



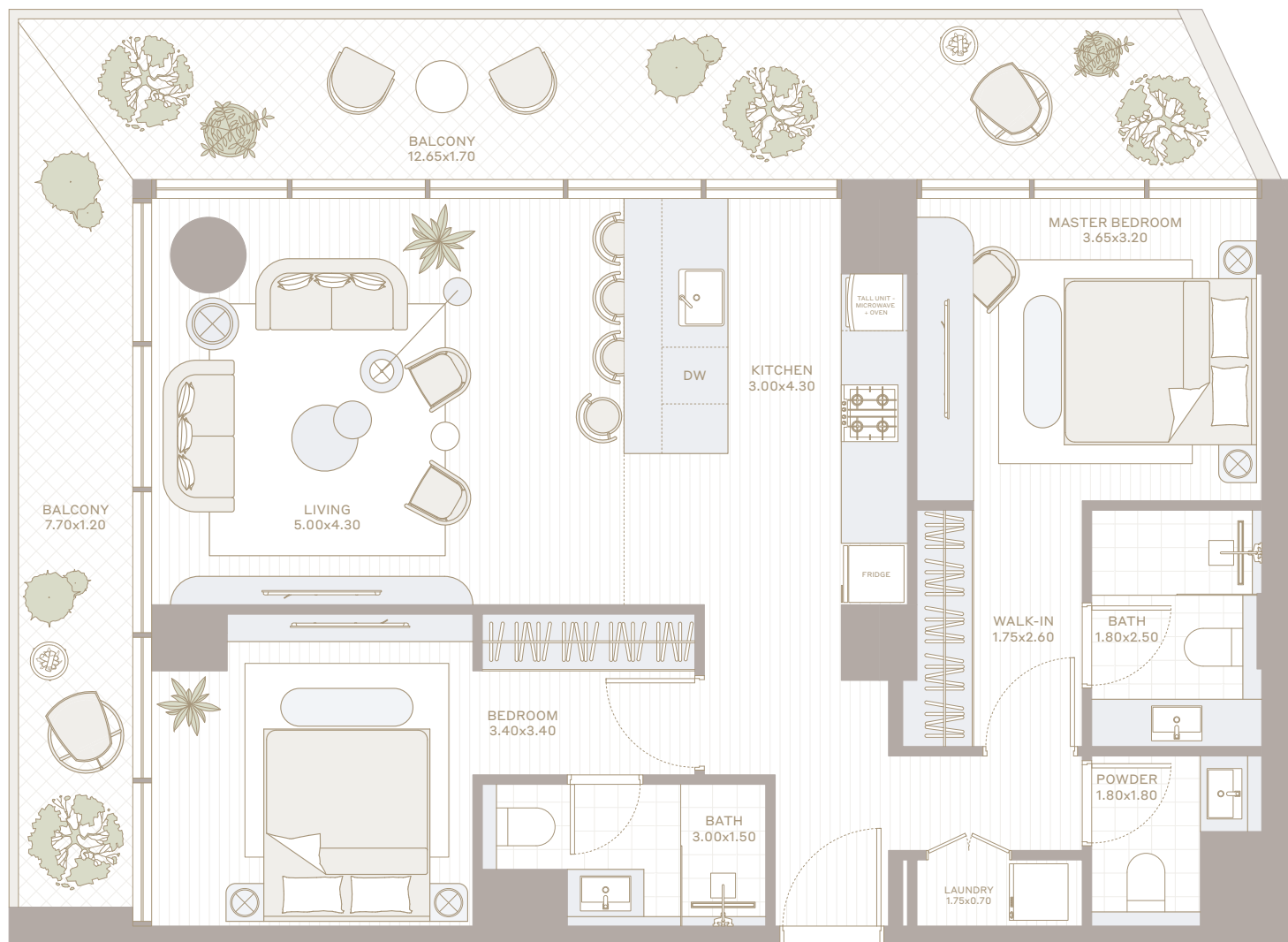
POOL & GARDEN
VIEW

BOULEVARD /
COMMUNITY
PARK VIEW

LEVEL 2-5

CENTRAL PARK

LEVEL 6-10



All the dimensions are in square feet. The Unit shown is typical, and actual Unit may vary in dimensions, areas, layout, material specification, orientation, and location. Some of the Units may have a mirrored layout of the above plan. Unit Windows, Façade, Balcony door location, Fixtures, Kitchen Cabinets, Sanitary ware, and Wardrobes, including each of their location as shown in the plan is indicative and subject to revision by the Seller. All fixtures, fittings, goods, accessories, and furniture reflected/displayed in this plan(s) are strictly illustrative and representational (not actual) in nature and are only for the purpose of illustrating /reflecting one of the possible layouts which the Purchaser could arrange after the Unit is handed over and do not form part of the Unit. No furniture, goods, accessories are included in the sale, unless such items are specifically included in Schedule A of the SPA.



TYPE

05

2 BHK

INTERIOR
999 SQ.FT.

TOTAL
1,159 SQ.FT.

EXTERIOR
160 SQ.FT.

FLOORS
2-11

BOULEVARD / LAKE VIEW



POOL & GARDEN
VIEW

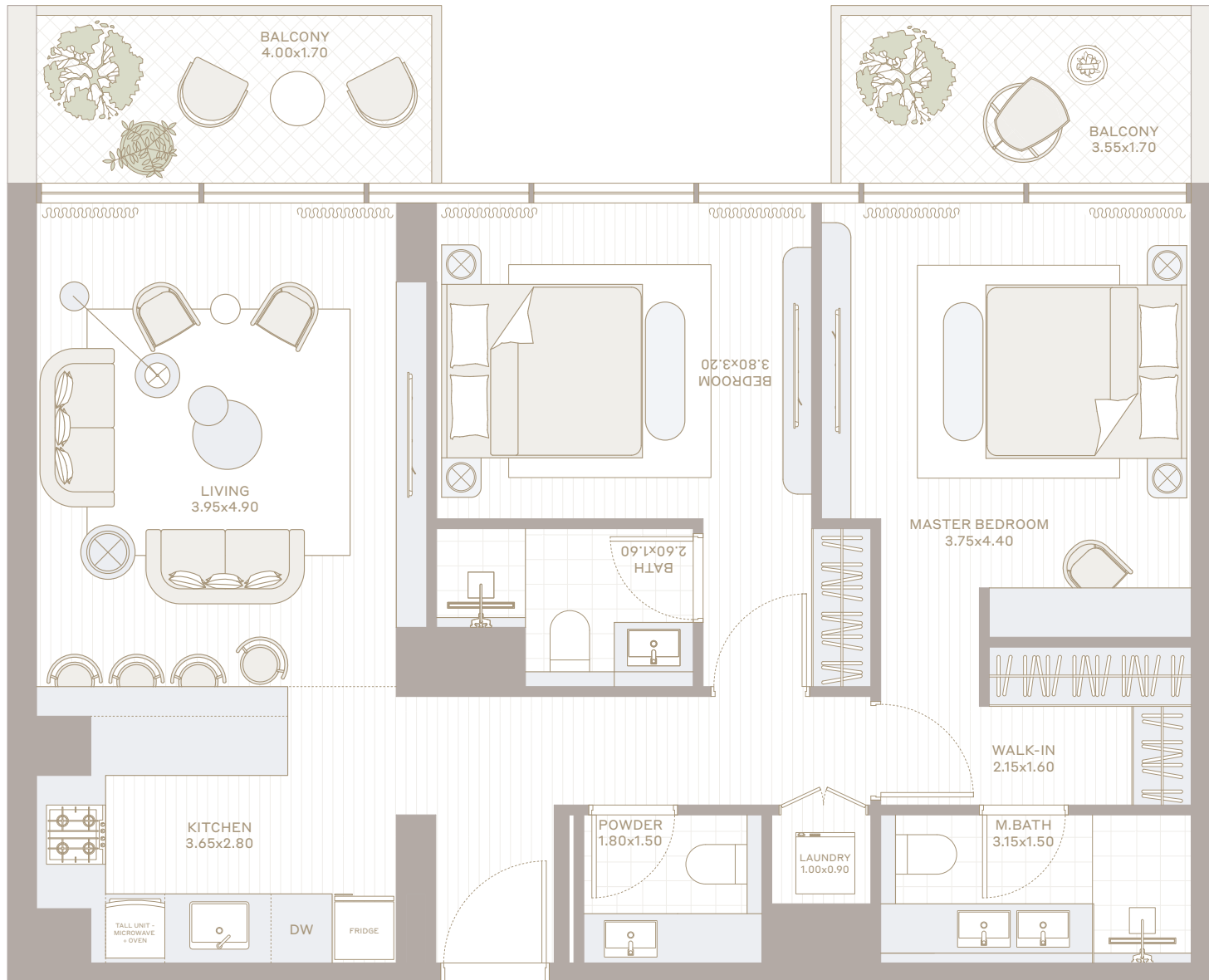
LEVEL 2-5

BOULEVARD /
COMMUNITY
PARK VIEW

CENTRAL PARK

LEVEL 6-10

LEVEL 11



All the dimensions are in square feet. The Unit shown is typical, and actual Unit may vary in dimensions, areas, layout, material specification, orientation, and location. Some of the Units may have a mirrored layout of the above plan. Unit Windows, Façade, Balcony door location, Fixtures, Kitchen Cabinets, Sanitary ware, and Wardrobes, including each of their location as shown in the plan is indicative and subject to revision by the Seller. All fixtures, fittings, goods, accessories, and furniture reflected/displayed in this plan(s) are strictly illustrative and representational (not actual) in nature and are only for the purpose of illustrating /reflecting one of the possible layouts which the Purchaser could arrange after the Unit is handed over and do not form part of the Unit. No furniture, goods, accessories are included in the sale, unless such items are specifically included in Schedule A of the SPA.

3 BEDROOM





TYPE

01

3 BHK

INTERIOR
1,397 SQ.FT.

TOTAL
1,636 SQ.FT.

EXTERIOR
239 SQ.FT.

FLOORS
6-11

BOULEVARD / LAKE VIEW



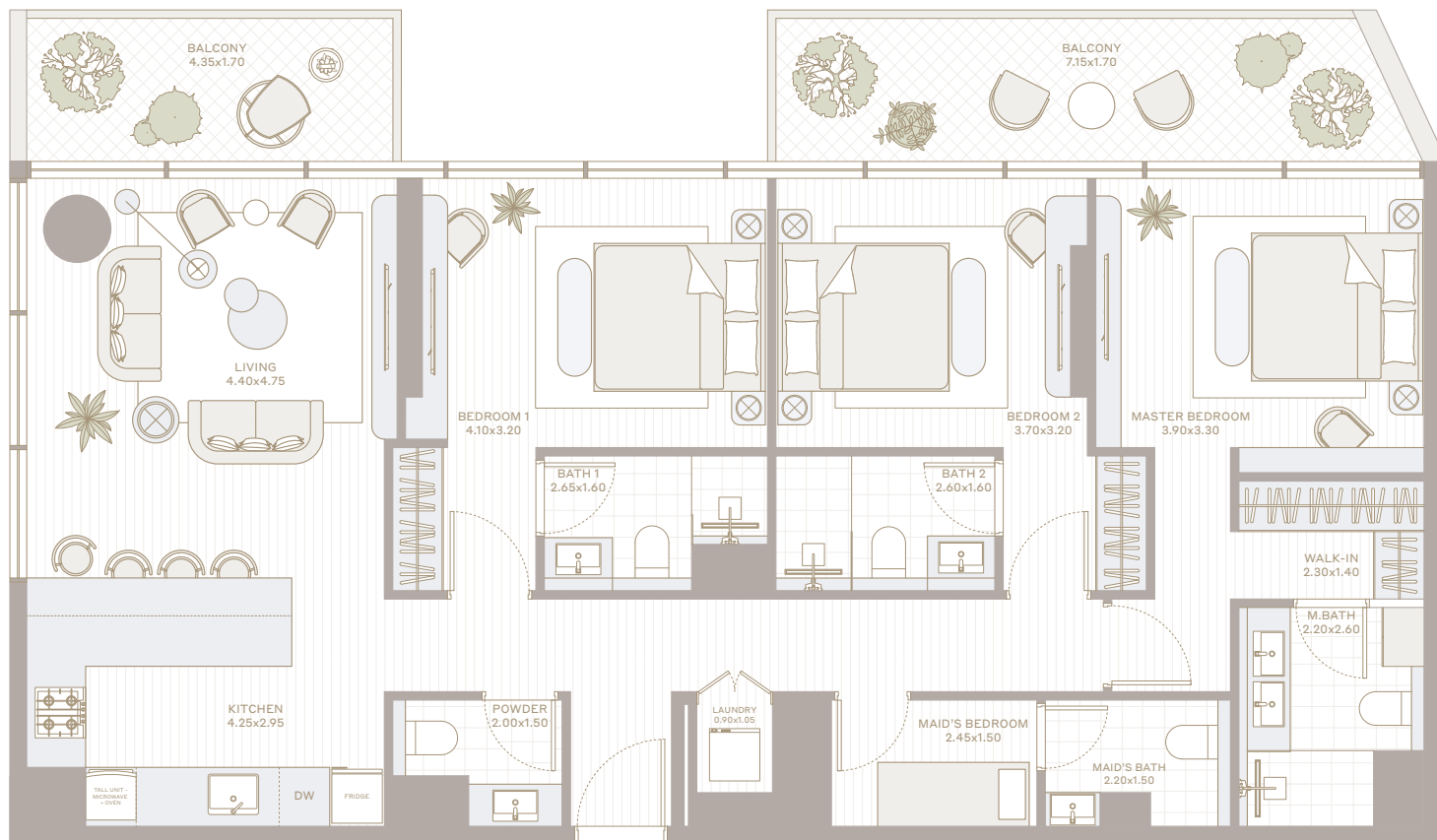
POOL & GARDEN
VIEW

BOULEVARD /
COMMUNITY
PARK VIEW

LEVEL 6-10

CENTRAL PARK

LEVEL 11



All the dimensions are in square feet. The Unit shown is typical, and actual Unit may vary in dimensions, areas, layout, material specification, orientation, and location. Some of the Units may have a mirrored layout of the above plan. Unit Windows, Façade, Balcony door location, Fixtures, Kitchen Cabinets, Sanitary ware, and Wardrobes, including each of their location as shown in the plan is indicative and subject to revision by the Seller. All fixtures, fittings, goods, accessories, and furniture reflected/displayed in this plan(s) are strictly illustrative and representational (not actual) in nature and are only for the purpose of illustrating /reflecting one of the possible layouts which the Purchaser could arrange after the Unit is handed over and do not form part of the Unit. No furniture, goods, accessories are included in the sale, unless such items are specifically included in Schedule A of the SPA.



TYPE

02

3 BHK

INTERIOR
1,372 SQ.FT.

TOTAL
1,743 SQ.FT.

EXTERIOR
371 SQ.FT.

FLOORS
2-11

BOULEVARD / LAKE VIEW



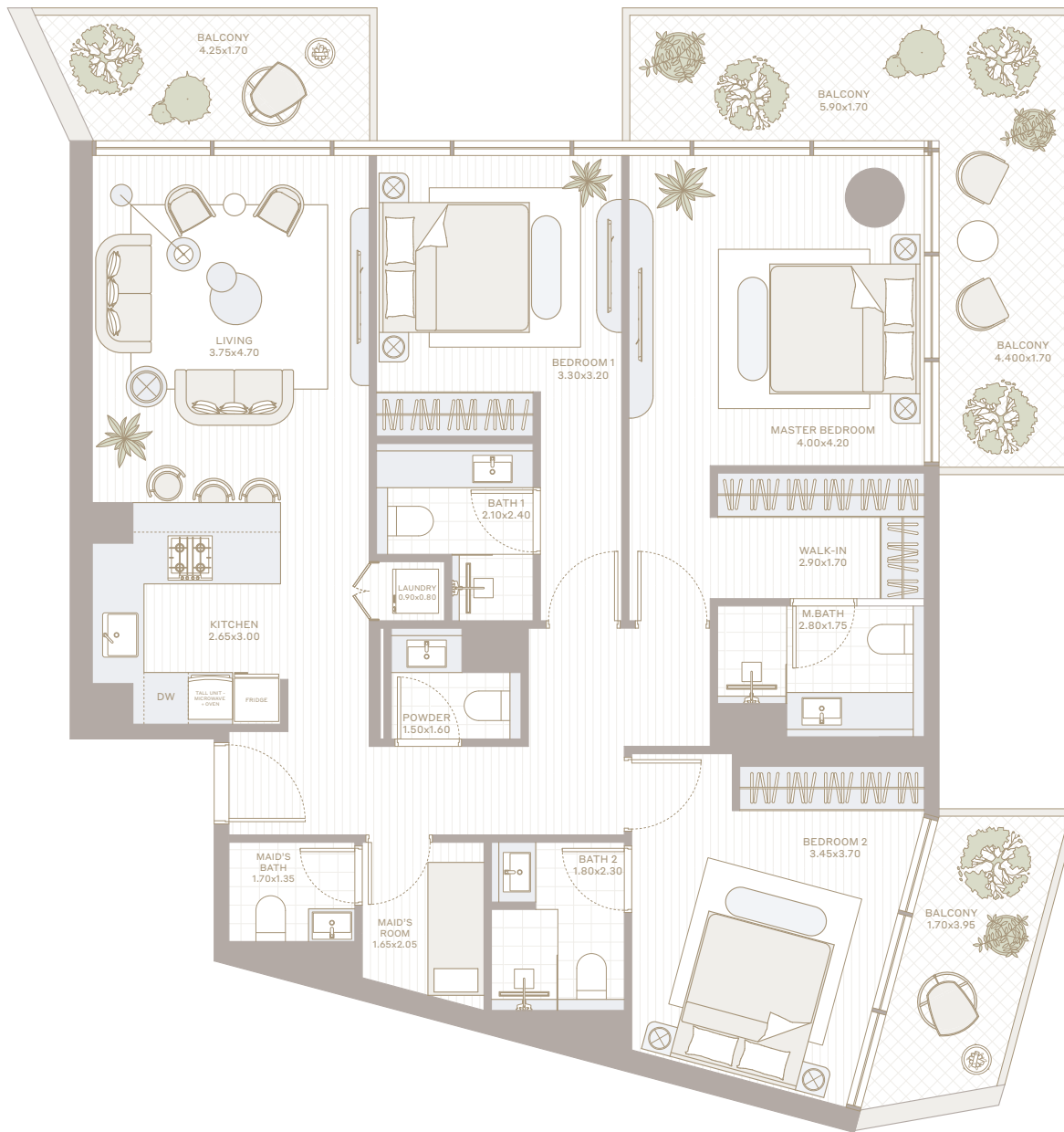
POOL & GARDEN
VIEW

BOULEVARD /
COMMUNITY
PARK VIEW

LEVEL 2-10

CENTRAL PARK

LEVEL 11



All the dimensions are in square feet. The Unit shown is typical, and actual Unit may vary in dimensions, areas, layout, material specification, orientation, and location. Some of the Units may have a mirrored layout of the above plan. Unit Windows, Façade, Balcony door location, Fixtures, Kitchen Cabinets, Sanitary ware, and Wardrobes, including each of their location as shown in the plan is indicative and subject to revision by the Seller. All fixtures, fittings, goods, accessories, and furniture reflected/displayed in this plan(s) are strictly illustrative and representational (not actual) in nature and are only for the purpose of illustrating /reflecting one of the possible layouts which the Purchaser could arrange after the Unit is handed over and do not form part of the Unit. No furniture, goods, accessories are included in the sale, unless such items are specifically included in Schedule A of the SPA.



TYPE

2T

3 BHK

INTERIOR 1,372 SQ.FT. TOTAL 2,028 SQ.FT.

EXTERIOR 656 SQ.FT. FLOORS 1

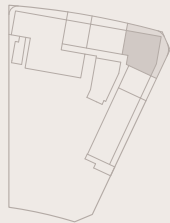
BOULEVARD / LAKE VIEW



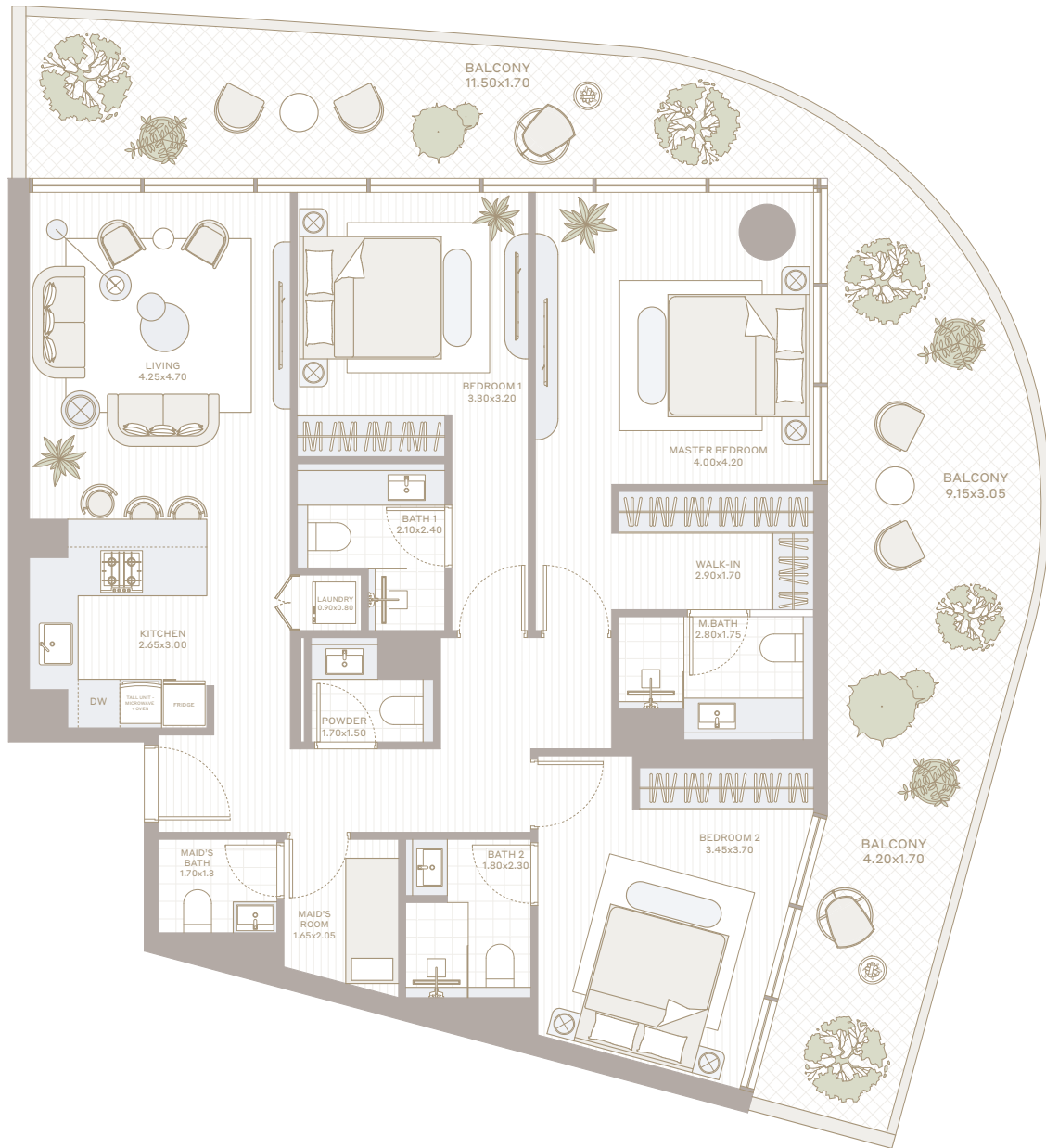
POOL & GARDEN VIEW

BOULEVARD / COMMUNITY PARK VIEW

LEVEL 1



CENTRAL PARK



All the dimensions are in square feet. The Unit shown is typical, and actual Unit may vary in dimensions, areas, layout, material specification, orientation, and location. Some of the Units may have a mirrored layout of the above plan. Unit Windows, Façade, Balcony door location, Fixtures, Kitchen Cabinets, Sanitary ware, and Wardrobes, including each of their location as shown in the plan is indicative and subject to revision by the Seller. All fixtures, fittings, goods, accessories, and furniture reflected/displayed in this plan(s) are strictly illustrative and representational (not actual) in nature and are only for the purpose of illustrating /reflecting one of the possible layouts which the Purchaser could arrange after the Unit is handed over and do not form part of the Unit. No furniture, goods, accessories are included in the sale, unless such items are specifically included in Schedule A of the SPA.



TYPE

03

3 BHK

INTERIOR
1,331 SQ.FT.

TOTAL
1,670 SQ.FT.

EXTERIOR
340 SQ.FT.

FLOORS
2-10

BOULEVARD / LAKE VIEW



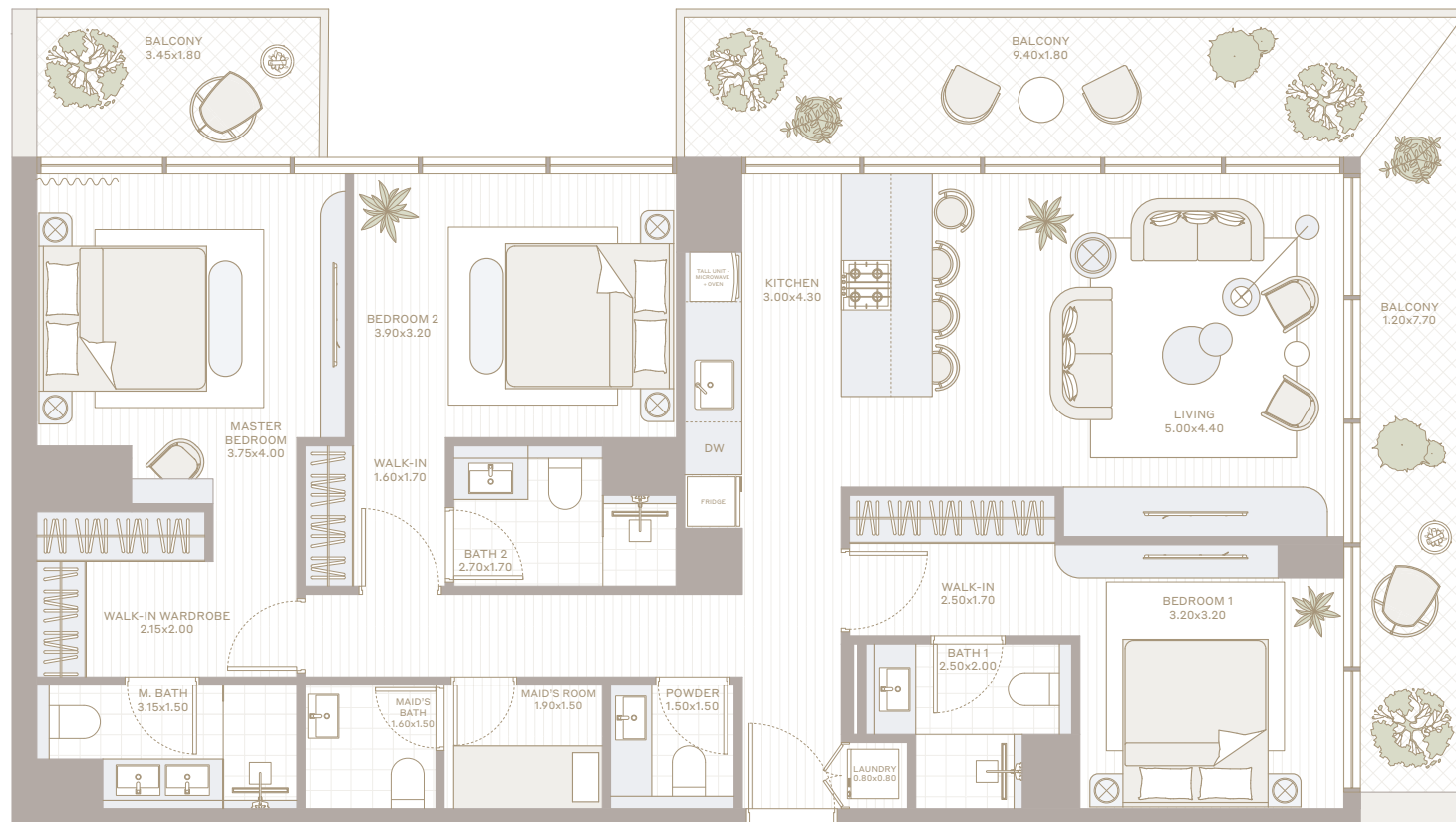
POOL & GARDEN
VIEW

BOULEVARD /
COMMUNITY
PARK VIEW

LEVEL 2-5

CENTRAL PARK

LEVEL 6-10



All the dimensions are in square feet. The Unit shown is typical, and actual Unit may vary in dimensions, areas, layout, material specification, orientation, and location. Some of the Units may have a mirrored layout of the above plan. Unit Windows, Façade, Balcony door location, Fixtures, Kitchen Cabinets, Sanitary ware, and Wardrobes, including each of their location as shown in the plan is indicative and subject to revision by the Seller. All fixtures, fittings, goods, accessories, and furniture reflected/displayed in this plan(s) are strictly illustrative and representational (not actual) in nature and are only for the purpose of illustrating /reflecting one of the possible layouts which the Purchaser could arrange after the Unit is handed over and do not form part of the Unit. No furniture, goods, accessories are included in the sale, unless such items are specifically included in Schedule A of the SPA.