



THE BEACH RESIDENCES

AT AL MARJAN ISLAND

FLOOR PLANS

By



RANGE
RAS AL KHAIMAH

East Wing - 2nd Floor



UNIT - E 201

STUDIO

Internal living Area
516.01 sq.ft.

Outdoor Living Area
169.08 sq.ft.

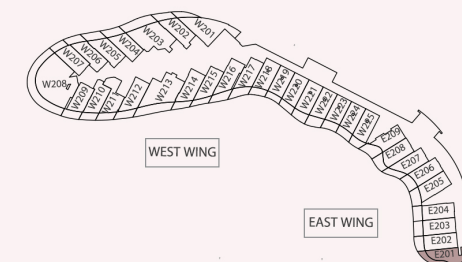
Total Living Area
685.09 sq.ft.

DISCLAIMER:

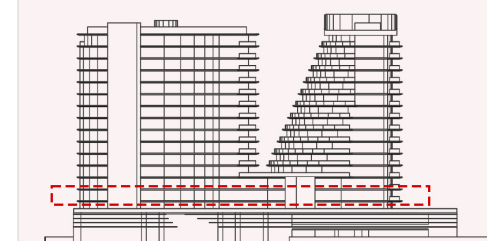
All measurements are indicative and for marketing purposes only. All efforts have been made to ensure their accuracy, however these layouts are subject to change at the discretion of the developer and should not be relied upon as final. The actual area may vary from the stated area and the developer reserves the right to make any revisions / alterations, at its absolute discretion, without any liability whatsoever.



KEY PLAN



KEY ELEVATION



UNIT - E 202

STUDIO

Internal living Area
501.19 sq.ft.

Outdoor Living Area
136.36 sq.ft.

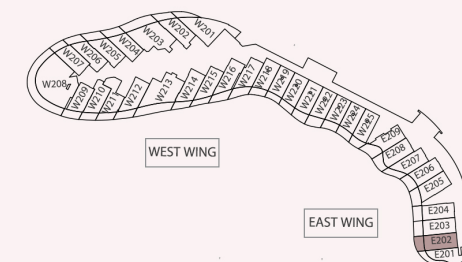
Total Living Area
637.55 sq.ft.

DISCLAIMER:

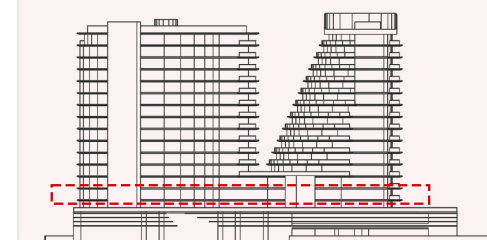
All measurements are indicative and for marketing purposes only. All efforts have been made to ensure their accuracy, however these layouts are subject to change at the discretion of the developer and should not be relied upon as final. The actual area may vary from the stated area and the developer reserves the right to make any revisions / alterations, at its absolute discretion, without any liability whatsoever.



KEY PLAN



KEY ELEVATION



UNIT - E 203

STUDIO

Internal living Area
494.52 sq.ft.

Outdoor Living Area
141.13 sq.ft.

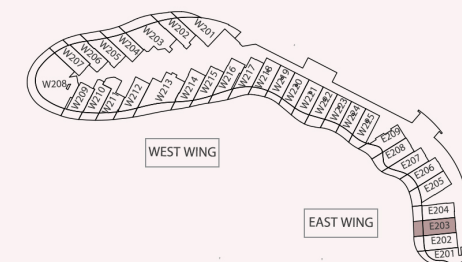
Total Living Area
635.65 sq.ft.

DISCLAIMER:

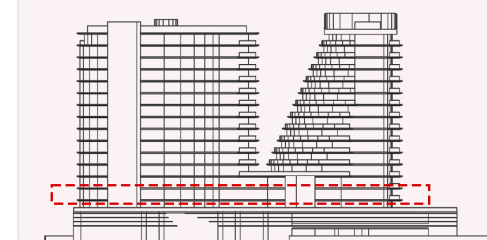
All measurements are indicative and for marketing purposes only. All efforts have been made to ensure their accuracy, however these layouts are subject to change at the discretion of the developer and should not be relied upon as final. The actual area may vary from the stated area and the developer reserves the right to make any revisions / alterations, at its absolute discretion, without any liability whatsoever.



KEY PLAN



KEY ELEVATION



UNIT - E 204

STUDIO

Internal living Area
478.10 sq.ft.

Outdoor Living Area
139.65 sq.ft.

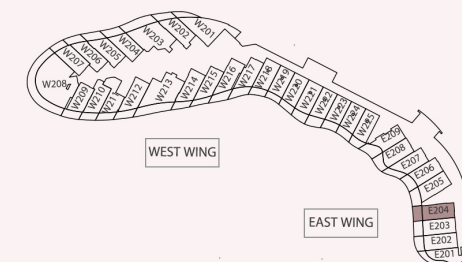
Total Living Area
617.75 sq.ft.

DISCLAIMER:

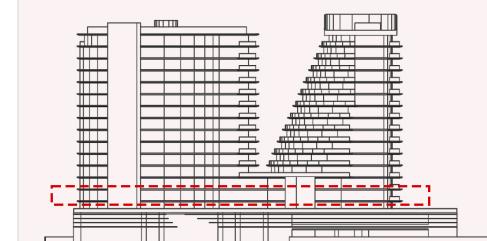
All measurements are indicative and for marketing purposes only. All efforts have been made to ensure their accuracy, however these layouts are subject to change at the discretion of the developer and should not be relied upon as final. The actual area may vary from the stated area and the developer reserves the right to make any revisions / alterations, at its absolute discretion, without any liability whatsoever.



KEY PLAN



KEY ELEVATION



UNIT - E 205

STUDIO

Internal living Area
507.13 sq.ft.

Outdoor Living Area
168.72 sq.ft.

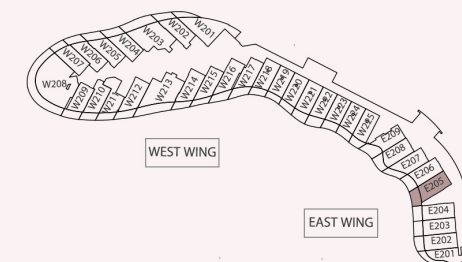
Total Living Area
675.85 sq.ft.

DISCLAIMER:

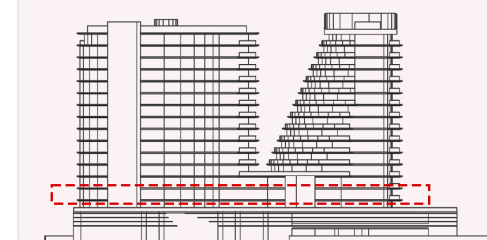
All measurements are indicative and for marketing purposes only. All efforts have been made to ensure their accuracy, however these layouts are subject to change at the discretion of the developer and should not be relied upon as final. The actual area may vary from the stated area and the developer reserves the right to make any revisions / alterations, at its absolute discretion, without any liability whatsoever.



KEY PLAN



KEY ELEVATION



UNIT - E 206

STUDIO

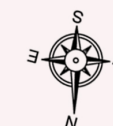
Internal living Area
484.69 sq.ft.

Outdoor Living Area
151.97 sq.ft.

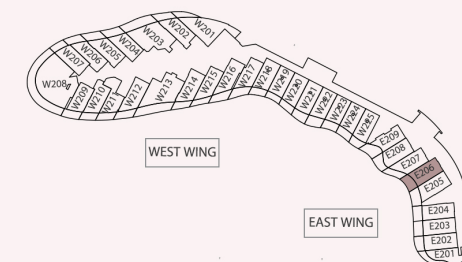
Total Living Area
636.66 sq.ft.

DISCLAIMER:

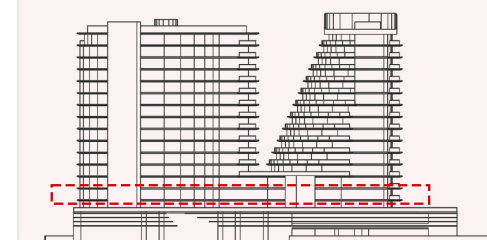
All measurements are indicative and for marketing purposes only. All efforts have been made to ensure their accuracy, however these layouts are subject to change at the discretion of the developer and should not be relied upon as final. The actual area may vary from the stated area and the developer reserves the right to make any revisions / alterations, at its absolute discretion, without any liability whatsoever.



KEY PLAN



KEY ELEVATION



UNIT - E 207

STUDIO

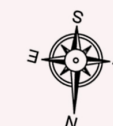
Internal living Area
501.88 sq.ft.

Outdoor Living Area
133.07 sq.ft.

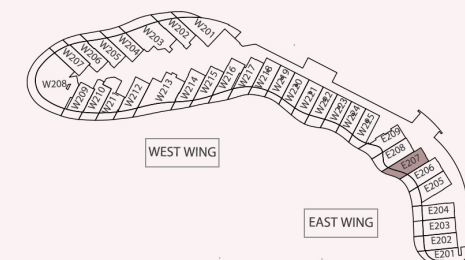
Total Living Area
634.95 sq.ft.

DISCLAIMER:

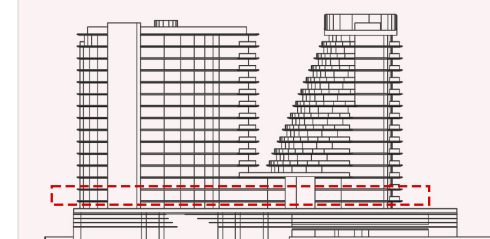
All measurements are indicative and for marketing purposes only. All efforts have been made to ensure their accuracy, however these layouts are subject to change at the discretion of the developer and should not be relied upon as final. The actual area may vary from the stated area and the developer reserves the right to make any revisions / alterations, at its absolute discretion, without any liability whatsoever.



KEY PLAN



KEY ELEVATION



UNIT - E 208

STUDIO

Internal living Area
487.55 sq.ft.

Outdoor Living Area
149.14 sq.ft.

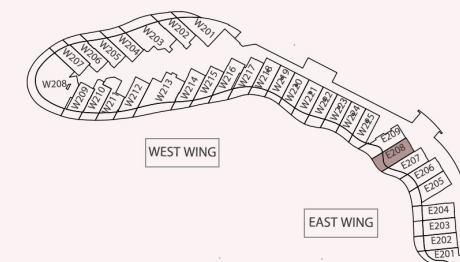
Total Living Area
636.69 sq.ft.

DISCLAIMER:

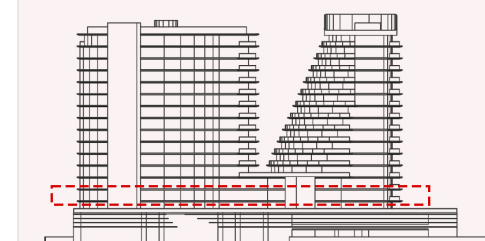
All measurements are indicative and for marketing purposes only. All efforts have been made to ensure their accuracy, however these layouts are subject to change at the discretion of the developer and should not be relied upon as final. The actual area may vary from the stated area and the developer reserves the right to make any revisions / alterations, at its absolute discretion, without any liability whatsoever.



KEY PLAN



KEY ELEVATION



UNIT - E 209

STUDIO

Internal living Area
435.92 sq.ft.

Outdoor Living Area
199.64 sq.ft.

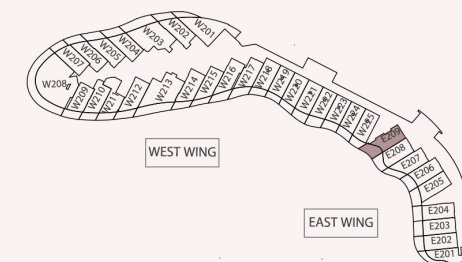
Total Living Area
635.56 sq.ft.

DISCLAIMER:

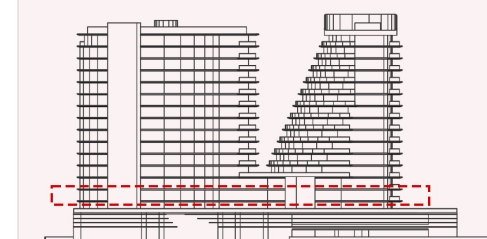
All measurements are indicative and for marketing purposes only. All efforts have been made to ensure their accuracy, however these layouts are subject to change at the discretion of the developer and should not be relied upon as final. The actual area may vary from the stated area and the developer reserves the right to make any revisions / alterations, at its absolute discretion, without any liability whatsoever.



KEY PLAN



KEY ELEVATION





THE BEACH RESIDENCES

AT AL MARJAN ISLAND

GET IN TOUCH

Call: +971 4 325 3447 | Email: info@rangerak.ae

www.rangerak.ae

Boulevard Plaza, Tower 2, Office 1104
Burj Khalifa Community, Downtown, P.O. Box 50390,
Dubai, United Arab Emirates

By



RANGE
RAS AL KHAIMAH