



THE BEACH RESIDENCES

AT AL MARJAN ISLAND

FLOOR PLANS

By



RANGE
RAS AL KHAIMAH

East Wing - 7th Floor



UNIT - E 701

STUDIO

Internal living Area
516.01 sq.ft.

Outdoor Living Area
169.08 sq.ft.

Total Living Area
685.09 sq.ft.

DISCLAIMER:

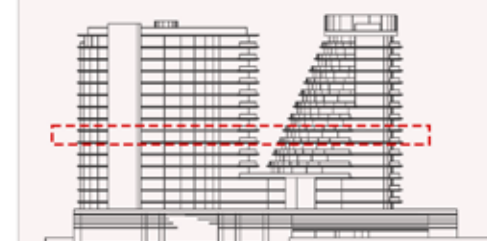
All measurements are indicative and for marketing purposes only. All efforts have been made to ensure their accuracy, however these layouts are subject to change at the discretion of the developer and should not be relied upon as final. The actual area may vary from the stated area and the developer reserves the right to make any revisions / alterations, at its absolute discretion, without any liability whatsoever.



KEY PLAN



KEY ELEVATION



UNIT - E 702

STUDIO

Internal living Area
501.19 sq.ft.

Outdoor Living Area
136.36 sq.ft.

Total Living Area
637.55 sq.ft.

DISCLAIMER:

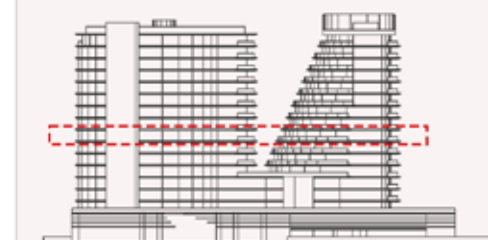
All measurements are indicative and for marketing purposes only. All efforts have been made to ensure their accuracy, however these layouts are subject to change at the discretion of the developer and should not be relied upon as final. The actual area may vary from the stated area and the developer reserves the right to make any revisions / alterations, at its absolute discretion, without any liability whatsoever.



KEY PLAN



KEY ELEVATION



UNIT - E 703

STUDIO

Internal living Area
494.52 sq.ft.

Outdoor Living Area
141.13 sq.ft.

Total Living Area
635.65 sq.ft.

DISCLAIMER:

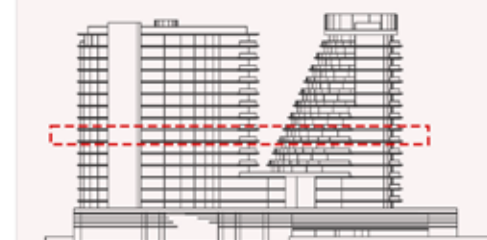
All measurements are indicative and for marketing purposes only. All efforts have been made to ensure their accuracy, however these layouts are subject to change at the discretion of the developer and should not be relied upon as final. The actual area may vary from the stated area and the developer reserves the right to make any revisions / alterations, at its absolute discretion, without any liability whatsoever.



KEY PLAN



KEY ELEVATION



UNIT - E 704

STUDIO

Internal living Area
478.10 sq.ft.

Outdoor Living Area
138.87 sq.ft.

Total Living Area
616.98 sq.ft.

DISCLAIMER:

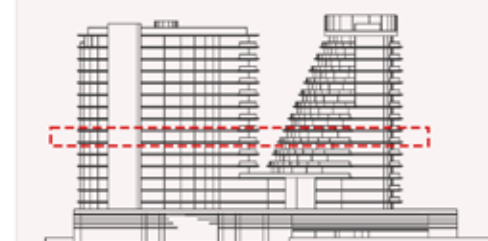
All measurements are indicative and for marketing purposes only. All efforts have been made to ensure their accuracy, however these layouts are subject to change at the discretion of the developer and should not be relied upon as final. The actual area may vary from the stated area and the developer reserves the right to make any revisions / alterations, at its absolute discretion, without any liability whatsoever.



KEY PLAN



KEY ELEVATION



UNIT - E 705

STUDIO

Internal living Area
507.13 sq.ft.

Outdoor Living Area
169.42 sq.ft.

Total Living Area
676.55 sq.ft.

DISCLAIMER:

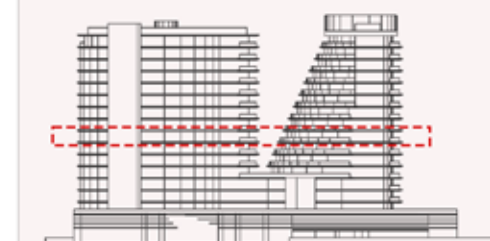
All measurements are indicative and for marketing purposes only. All efforts have been made to ensure their accuracy, however these layouts are subject to change at the discretion of the developer and should not be relied upon as final. The actual area may vary from the stated area and the developer reserves the right to make any revisions / alterations, at its absolute discretion, without any liability whatsoever.



KEY PLAN



KEY ELEVATION



UNIT - E 706

STUDIO

Internal living Area
484.69 sq.ft.

Outdoor Living Area
151.97 sq.ft.

Total Living Area
636.66 sq.ft.

DISCLAIMER:

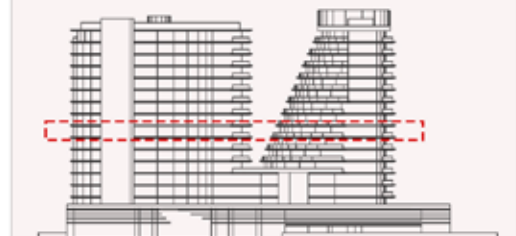
All measurements are indicative and for marketing purposes only. All efforts have been made to ensure their accuracy, however these layouts are subject to change at the discretion of the developer and should not be relied upon as final. The actual area may vary from the stated area and the developer reserves the right to make any revisions / alterations, at its absolute discretion, without any liability whatsoever.



KEY PLAN



KEY ELEVATION



UNIT - E 707

STUDIO

Internal living Area
483.30 sq.ft.

Outdoor Living Area
160.85 sq.ft.

Total Living Area
644.15 sq.ft.

DISCLAIMER:

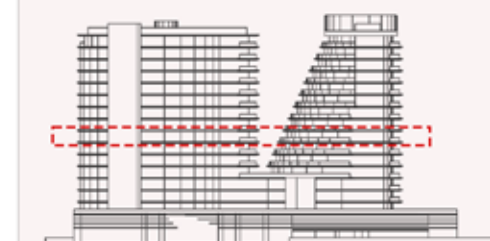
All measurements are indicative and for marketing purposes only. All efforts have been made to ensure their accuracy, however these layouts are subject to change at the discretion of the developer and should not be relied upon as final. The actual area may vary from the stated area and the developer reserves the right to make any revisions / alterations, at its absolute discretion, without any liability whatsoever.



KEY PLAN



KEY ELEVATION



UNIT - E 708

STUDIO

Internal living Area
549.23 sq.ft.

Outdoor Living Area
146.93 sq.ft.

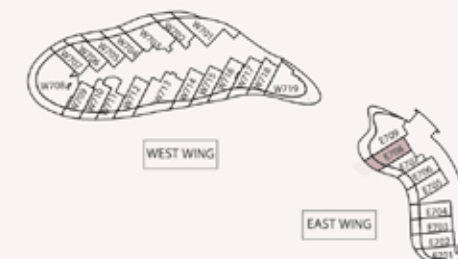
Total Living Area
696.17 sq.ft.

DISCLAIMER:

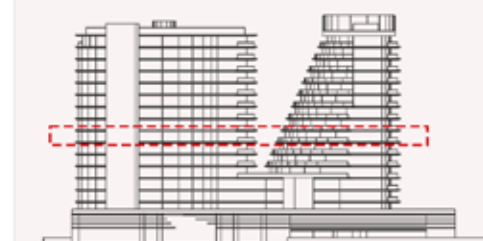
All measurements are indicative and for marketing purposes only. All efforts have been made to ensure their accuracy, however these layouts are subject to change at the discretion of the developer and should not be relied upon as final. The actual area may vary from the stated area and the developer reserves the right to make any revisions / alterations, at its absolute discretion, without any liability whatsoever.



KEY PLAN



KEY ELEVATION



UNIT - E 709

1 BEDROOM

Internal living Area
1010.07 sq.ft.

Outdoor Living Area
498.64 sq.ft.

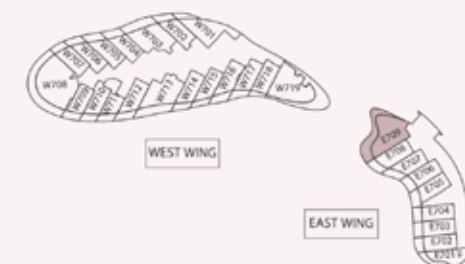
Total Living Area
1508.71 sq.ft.

DISCLAIMER:

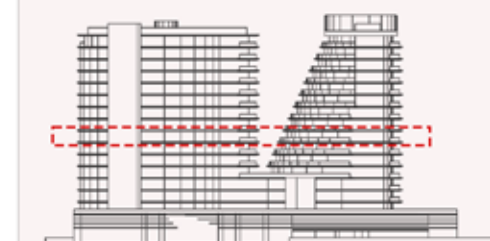
All measurements are indicative and for marketing purposes only. All efforts have been made to ensure their accuracy, however these layouts are subject to change at the discretion of the developer and should not be relied upon as final. The actual area may vary from the stated area and the developer reserves the right to make any revisions / alterations, at its absolute discretion, without any liability whatsoever.



KEY PLAN



KEY ELEVATION





THE BEACH RESIDENCES

AT AL MARJAN ISLAND

GET IN TOUCH

Call: +971 4 325 3447 | Email: info@rangerak.ae

www.rangerak.ae

Boulevard Plaza, Tower 2, Office 1104
Burj Khalifa Community, Downtown, P.O. Box 50390,
Dubai, United Arab Emirates

By



RANGE
RAS AL KHAIMAH