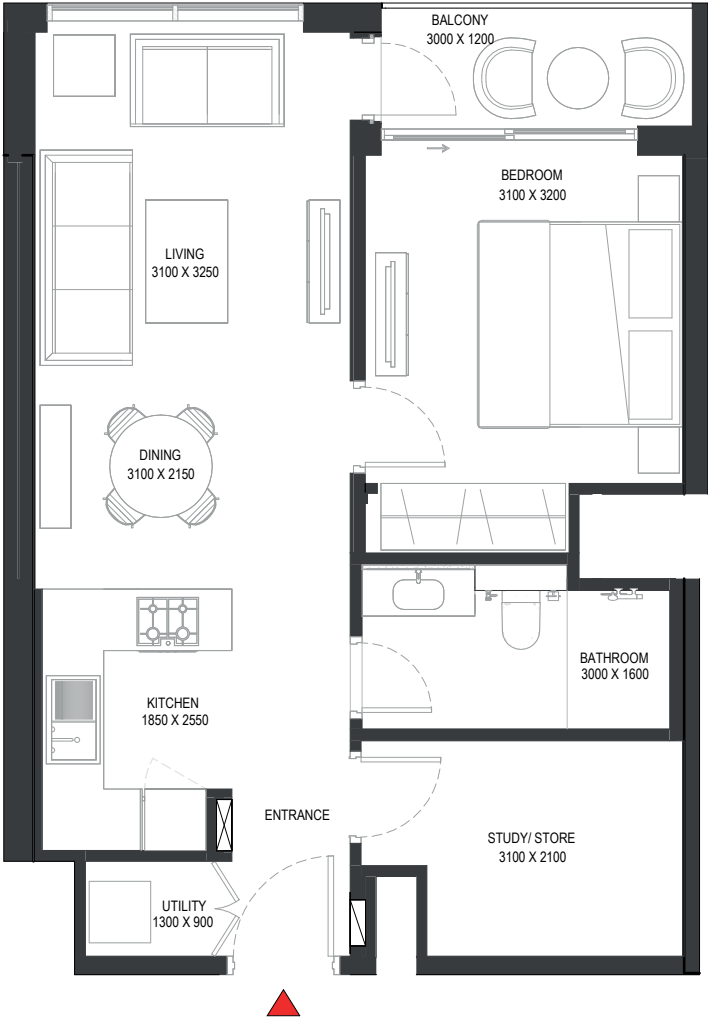
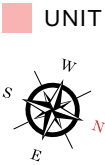
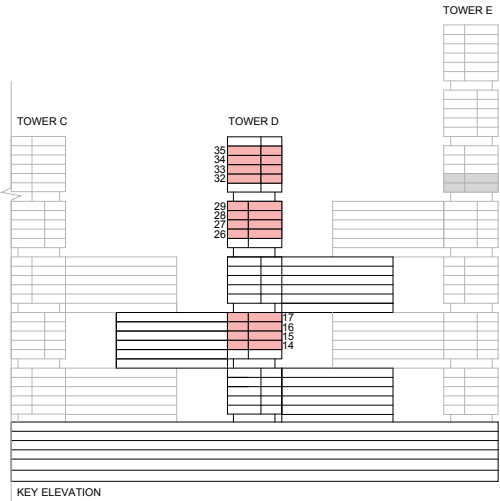


TOWER D

UNIT PLAN LAYOUTS

1.5 BEDROOM APARTMENT
TYPE B (with study room + balcony) VARIANT 1

TOTAL SALEABLE AREA
SUITE = 619.57 SQ.FT.
BALCONY = 45.96 SQ.FT.
TOTAL = 665.53 SQ.FT.



List of unit numbers with this unit plan:

VIEWS

Ras Al Khor, Amenities
D1414, D1514, D1614, D1714

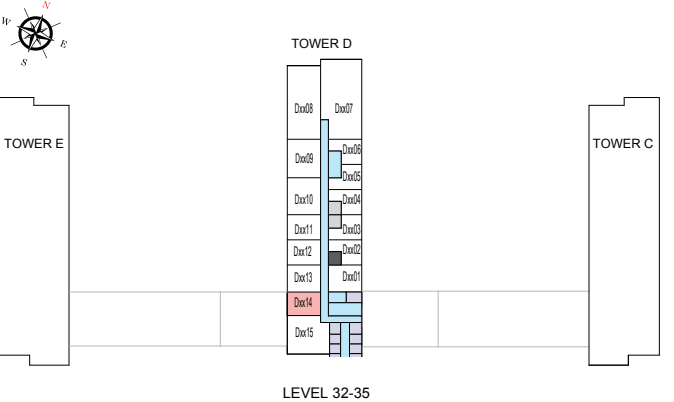
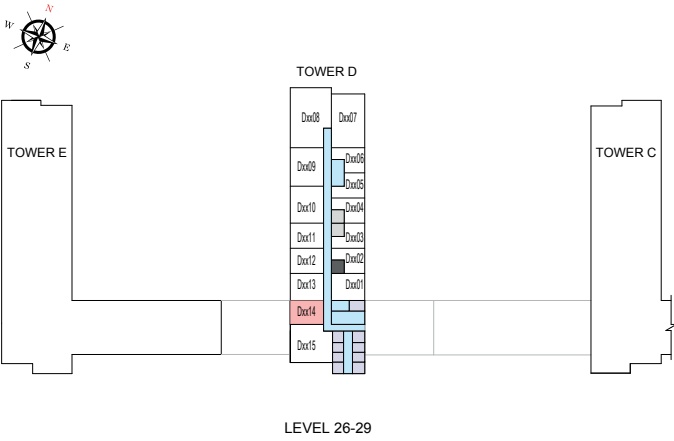
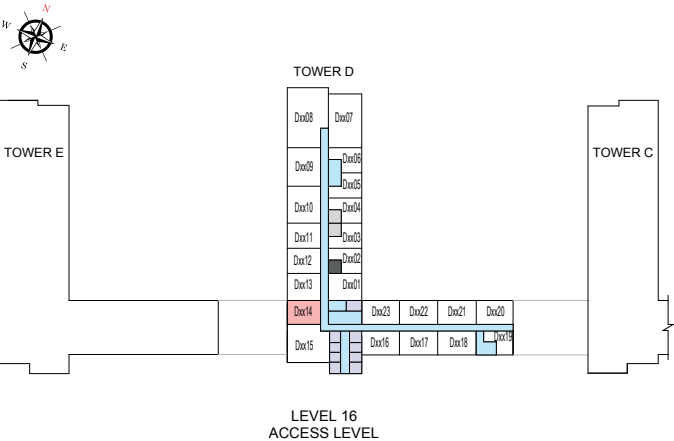
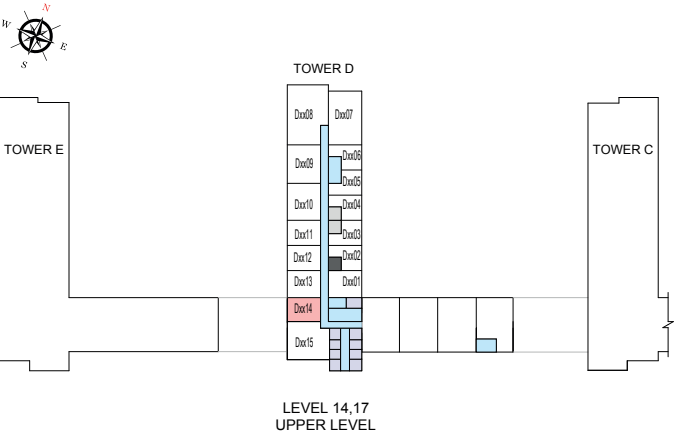
Ras Al Khor
D2614, D2714, D2814, D2914, D3214, D3314, D3414, D3514

Disclaimer: 1. All dimensions are in metric, measured to wall finishes. 2. All materials, dimensions & drawings are approximate. 3. Information is subject to change without notice, at developer's absolute discretion. 4. Actual area may vary from the stated area. 5. Drawing are not to scale. 6. All images used are for illustrative purpose only and do not represent the actual size, features, specifications, fittings and furnishings. 7. The developer reserves the right to make revisions/ alterations, at its absolute discretion, without any liability whatsoever.

1.5 BEDROOM APARTMENT
TYPE B (with study room + balcony) VARIANT 1

TOTAL SALEABLE AREA
SUITE = 619.57 SQ.FT.
BALCONY = 45.96 SQ.FT.
TOTAL = 665.53 SQ.FT.

UNIT



List of unit numbers with this unit plan:

VIEWS

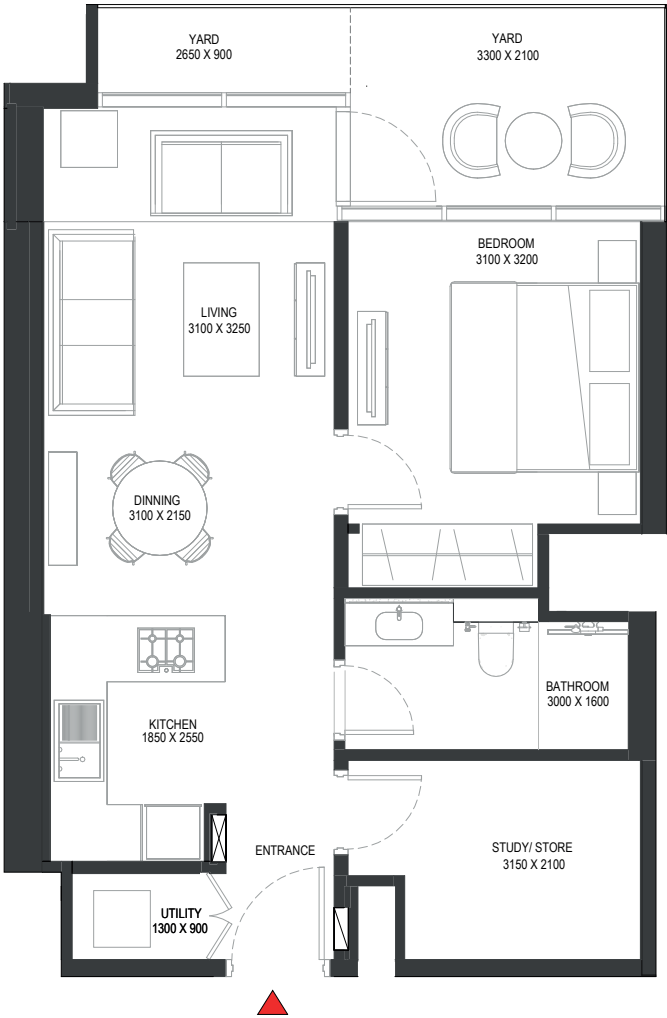
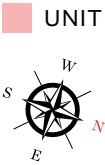
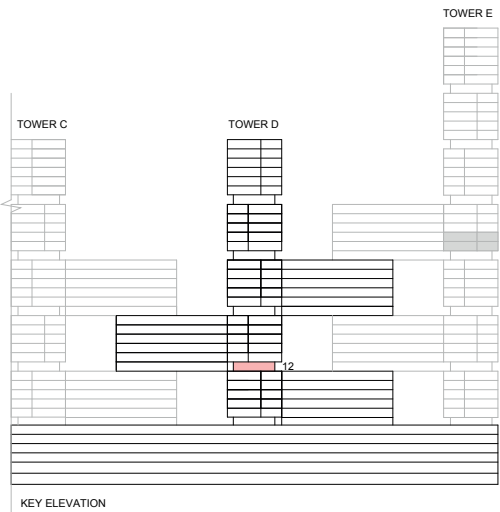
Ras Al Khor, Amenities
D1414, D1514, D1614, D1714

Ras Al Khor
D2614, D2714, D2814, D2914, D3214, D3314, D3414, D3514

Disclaimer: 1. All dimensions are in metric, measured to wall finishes. 2. All materials, dimensions & drawings are approximate. 3. Information is subject to change without notice, at developer's absolute discretion. 4. Actual area may vary from the stated area. 5. Drawing are not to scale. 6. All images used are for illustrative purpose only and do not represent the actual size, features, specifications, fittings and furnishings. 7. The developer reserves the right to make revisions/ alterations, at its absolute discretion, without any liability whatsoever.

1.5 BEDROOM APARTMENT
TYPE D (with study room + yard) VARIANT 1

TOTAL SALEABLE AREA
SUITE = 616.02 SQ.FT.
YARD = 104.63 SQ.FT.
TOTAL = 720.65 SQ.FT.



List of unit numbers with this unit plan:

VIEWS

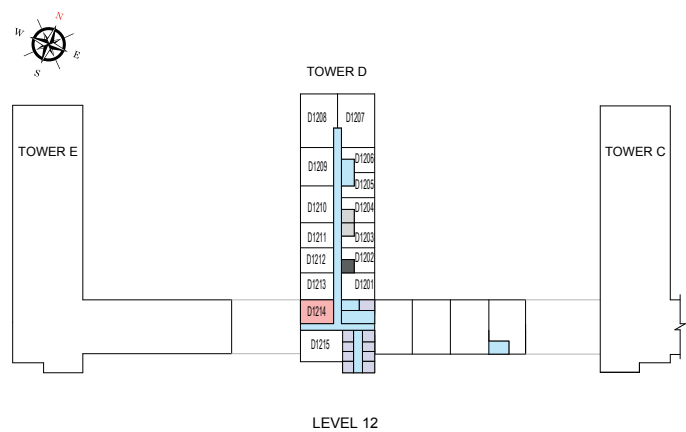
Ras Al Khor, Amenities
D1214

Disclaimer: 1. All dimensions are in metric, measured to wall finishes. 2. All materials, dimensions & drawings are approximate. 3. Information is subject to change without notice, at developer's absolute discretion. 4. Actual area may vary from the stated area. 5. Drawing are not to scale. 6. All images used are for illustrative purpose only and do not represent the actual size, features, specifications, fittings and furnishings. 7. The developer reserves the right to make revisions/ alterations, at its absolute discretion, without any liability whatsoever.

1.5 BEDROOM APARTMENT
TYPE D (with study room + yard) VARIANT 1

TOTAL SALEABLE AREA
SUITE = 616.02 SQ.FT.
YARD = 104.63 SQ.FT.
TOTAL = 720.65 SQ.FT.

UNIT



List of unit numbers with this unit plan:

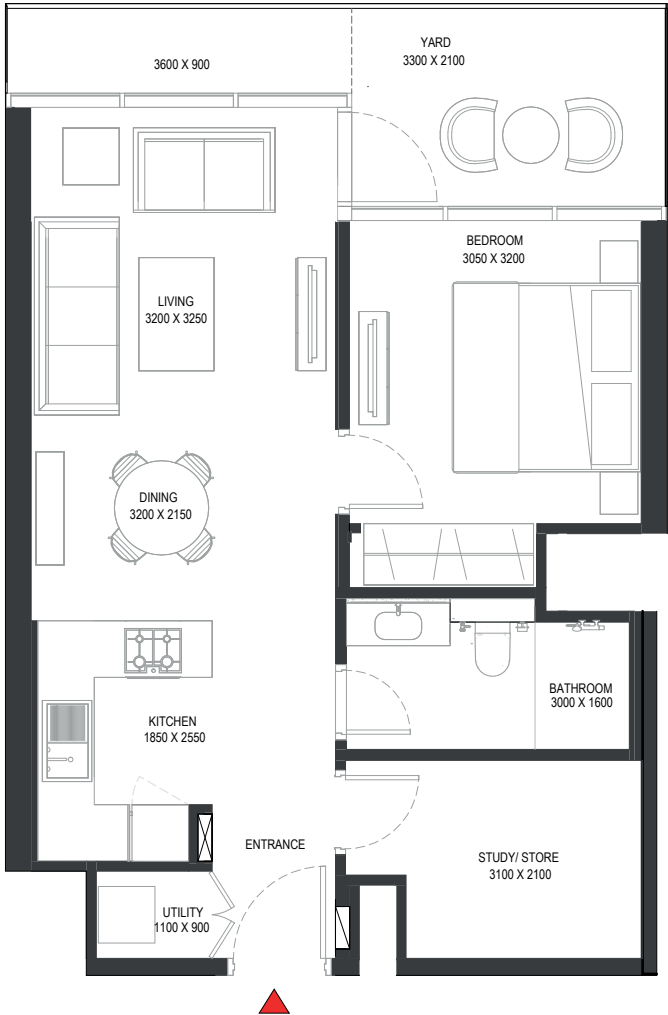
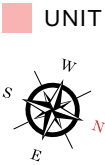
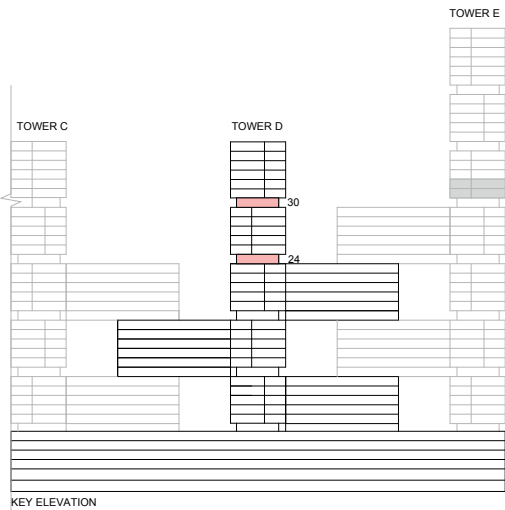
VIEWS

Ras Al Khor, Amenities
D1214

Disclaimer: 1. All dimensions are in metric, measured to wall finishes. 2. All materials, dimensions & drawings are approximate. 3. Information is subject to change without notice, at developer's absolute discretion. 4. Actual area may vary from the stated area. 5. Drawing are not to scale. 6. All images used are for illustrative purpose only and do not represent the actual size, features, specifications, fittings and furnishings. 7. The developer reserves the right to make revisions/ alterations, at its absolute discretion, without any liability whatsoever.

1.5 BEDROOM APARTMENT
TYPE D (with study room + yard) VARIANT 3

TOTAL SALEABLE AREA
SUITE = 616.02 SQ.FT.
YARD = 113.24 SQ.FT.
TOTAL = 729.26 SQ.FT.



List of unit numbers with this unit plan:

VIEWS

Ras Al Khor, Amenities
D2414

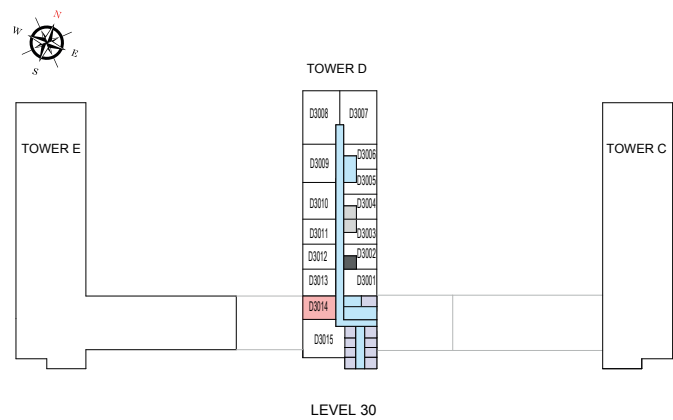
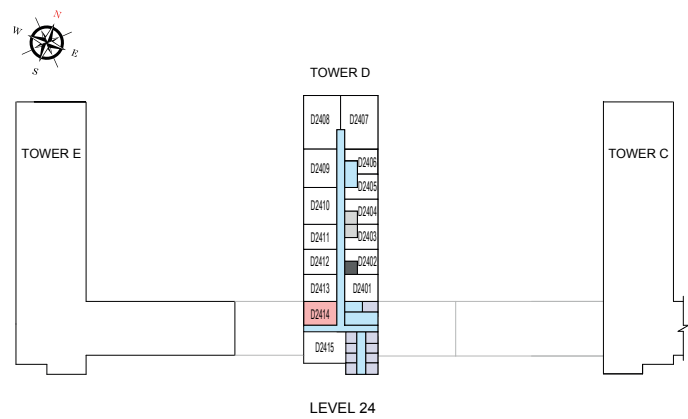
Ras Al Khor
D3014

Disclaimer: 1. All dimensions are in metric, measured to wall finishes. 2. All materials, dimensions & drawings are approximate. 3. Information is subject to change without notice, at developer's absolute discretion. 4. Actual area may vary from the stated area. 5. Drawing are not to scale. 6. All images used are for illustrative purpose only and do not represent the actual size, features, specifications, fittings and furnishings. 7. The developer reserves the right to make revisions/ alterations, at its absolute discretion, without any liability whatsoever.

1.5 BEDROOM APARTMENT
TYPE D (with study room + yard) VARIANT 3

TOTAL SALEABLE AREA
SUITE = 616.02 SQ.FT.
YARD = 113.24 SQ.FT.
TOTAL = 729.26 SQ.FT.

UNIT



List of unit numbers with this unit plan:

VIEWS

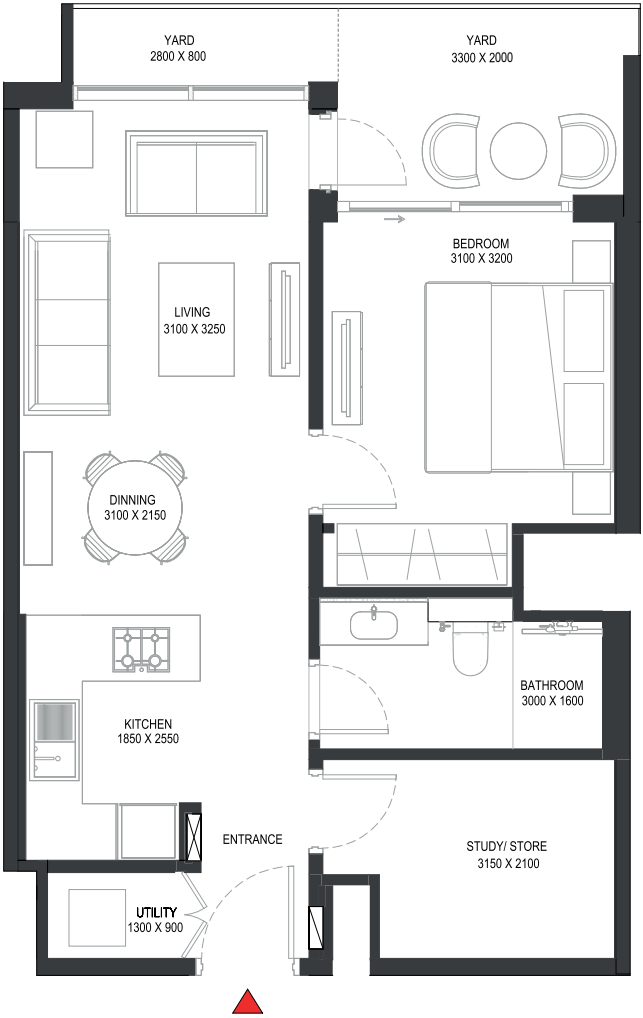
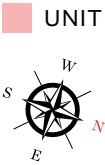
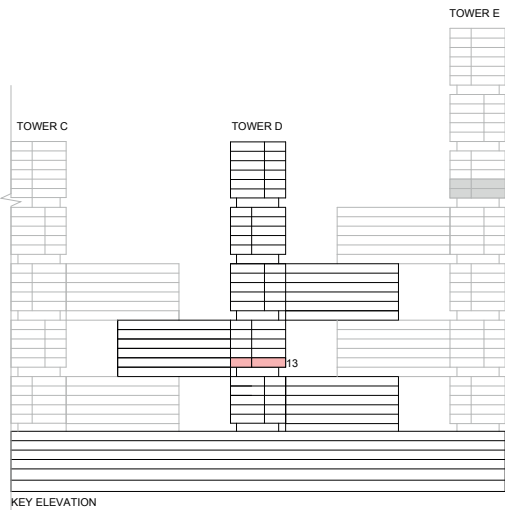
Ras Al Khor, Amenities
D2414

Ras Al Khor
D3014

Disclaimer: 1. All dimensions are in metric, measured to wall finishes. 2. All materials, dimensions & drawings are approximate. 3. Information is subject to change without notice, at developer's absolute discretion. 4. Actual area may vary from the stated area. 5. Drawing are not to scale. 6. All images used are for illustrative purpose only and do not represent the actual size, features, specifications, fittings and furnishings. 7. The developer reserves the right to make revisions/ alterations, at its absolute discretion, without any liability whatsoever.

1.5 BEDROOM APARTMENT
TYPE F (with study room + yard) VARIANT 1

TOTAL SALEABLE AREA
SUITE = 619.57 SQ.FT.
YARD = 102.15 SQ.FT.
TOTAL = 721.72 SQ.FT.



List of unit numbers with this unit plan:

VIEWS

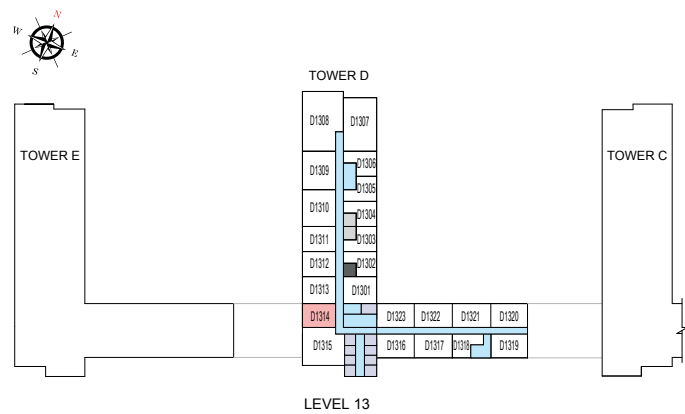
Ras Al Khor, Amenities
D1314

Disclaimer: 1. All dimensions are in metric, measured to wall finishes. 2. All materials, dimensions & drawings are approximate. 3. Information is subject to change without notice, at developer's absolute discretion. 4. Actual area may vary from the stated area. 5. Drawing are not to scale. 6. All images used are for illustrative purpose only and do not represent the actual size, features, specifications, fittings and furnishings. 7. The developer reserves the right to make revisions/ alterations, at its absolute discretion, without any liability whatsoever.

1.5 BEDROOM APARTMENT
TYPE F (with study room + yard) VARIANT 1

TOTAL SALEABLE AREA
SUITE = 619.57 SQ.FT.
YARD = 102.15 SQ.FT.
TOTAL = 721.72 SQ.FT.

UNIT



List of unit numbers with this unit plan:

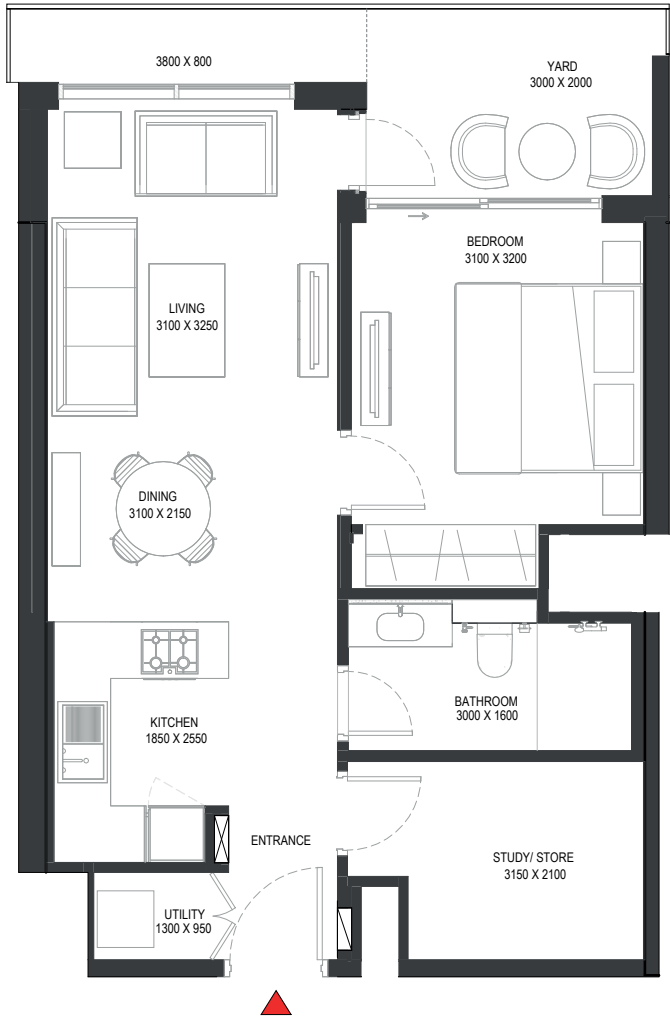
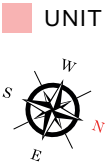
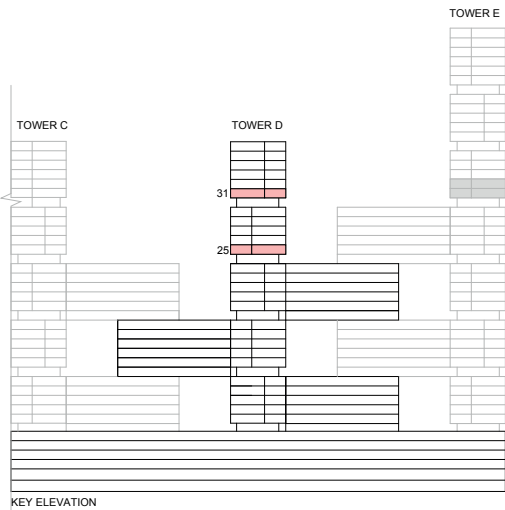
VIEWS

Ras Al Khor, Amenities
D1314

Disclaimer: 1. All dimensions are in metric, measured to wall finishes. 2. All materials, dimensions & drawings are approximate. 3. Information is subject to change without notice, at developer's absolute discretion. 4. Actual area may vary from the stated area. 5. Drawing are not to scale. 6. All images used are for illustrative purpose only and do not represent the actual size, features, specifications, fittings and furnishings. 7. The developer reserves the right to make revisions/ alterations, at its absolute discretion, without any liability whatsoever.

1.5 BEDROOM APARTMENT
TYPE F (with study room + yard) VARIANT 3

TOTAL SALEABLE AREA
SUITE = 619.57 SQ.FT.
YARD = 109.68 SQ.FT.
TOTAL = 729.25 SQ.FT.



List of unit numbers with this unit plan:

VIEWS

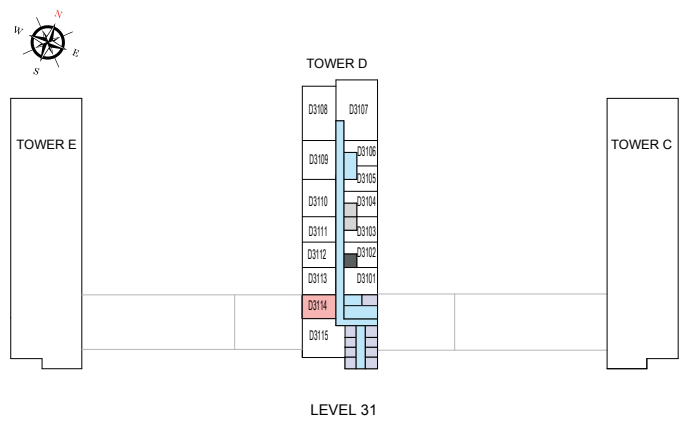
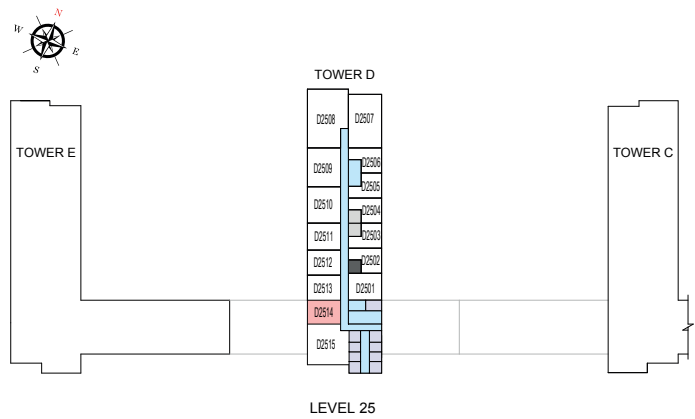
Ras Al Khor
D2514, D3114

Disclaimer: 1. All dimensions are in metric, measured to wall finishes. 2. All materials, dimensions & drawings are approximate. 3. Information is subject to change without notice, at developer's absolute discretion. 4. Actual area may vary from the stated area. 5. Drawing are not to scale. 6. All images used are for illustrative purpose only and do not represent the actual size, features, specifications, fittings and furnishings. 7. The developer reserves the right to make revisions/ alterations, at its absolute discretion, without any liability whatsoever.

1.5 BEDROOM APARTMENT
TYPE F (with study room + yard) VARIANT 3

TOTAL SALEABLE AREA
SUITE = 619.57 SQ.FT.
YARD = 109.68 SQ.FT.
TOTAL = 729.25 SQ.FT.

UNIT



List of unit numbers with this unit plan:

VIEWS

Ras Al Khor
D2514, D3114

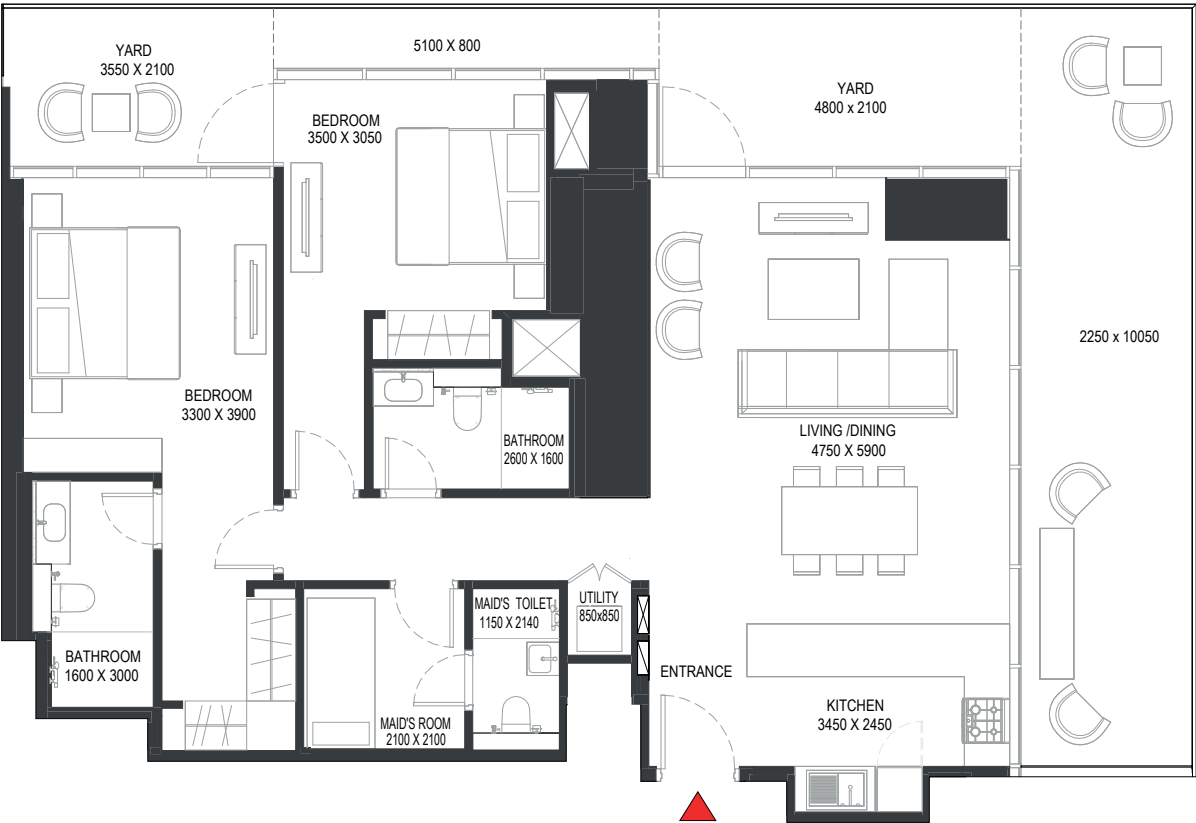
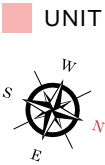
Disclaimer: 1. All dimensions are in metric, measured to wall finishes. 2. All materials, dimensions & drawings are approximate. 3. Information is subject to change without notice, at developer's absolute discretion. 4. Actual area may vary from the stated area. 5. Drawing are not to scale. 6. All images used are for illustrative purpose only and do not represent the actual size, features, specifications, fittings and furnishings. 7. The developer reserves the right to make revisions/ alterations, at its absolute discretion, without any liability whatsoever.

2 BEDROOM APARTMENT

TYPE J (with maid room + yard)

TOTAL SALEABLE AREA

SUITE = 1,200.82 SQ.FT.
YARD = 494.49 SQ.FT.
TOTAL = 1,695.31 SQ.FT.



List of unit numbers with this unit plan:

VIEWS

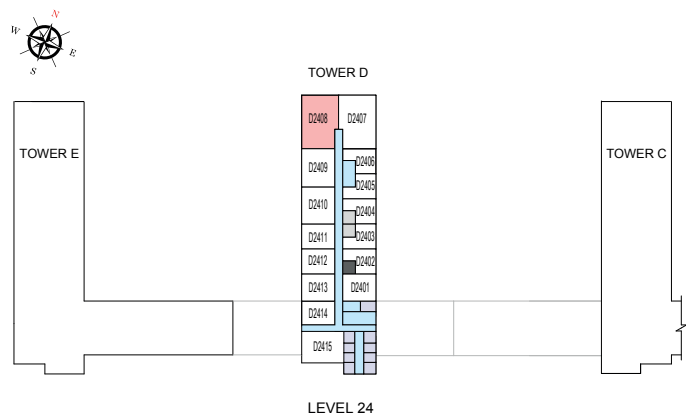
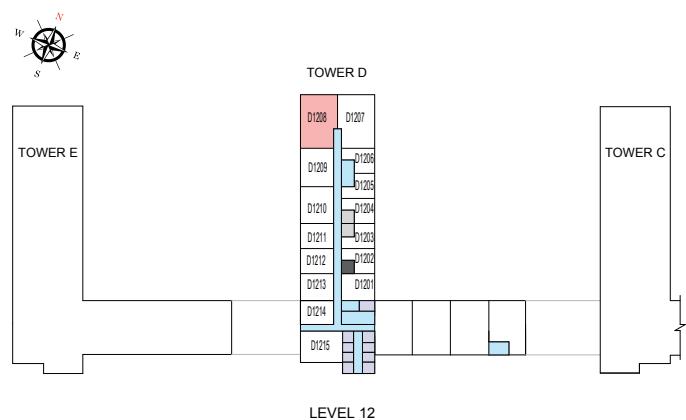
Downtown, Ras Al Khor, Creek, Golf Course, Water body, Amenities
D1208, D2408

Disclaimer: 1. All dimensions are in metric, measured to wall finishes. 2. All materials, dimensions & drawings are approximate. 3. Information is subject to change without notice, at developer's absolute discretion. 4. Actual area may vary from the stated area. 5. Drawing are not to scale. 6. All images used are for illustrative purpose only and do not represent the actual size, features, specifications, fittings and furnishings. 7. The developer reserves the right to make revisions/ alterations, at its absolute discretion, without any liability whatsoever.

2 BEDROOM APARTMENT
TYPE J (with maid room + yard)

TOTAL SALEABLE AREA
SUITE = 1,200.82 SQ.FT.
YARD = 494.49 SQ.FT.
TOTAL = 1,695.31 SQ.FT.

UNIT



List of unit numbers with this unit plan:

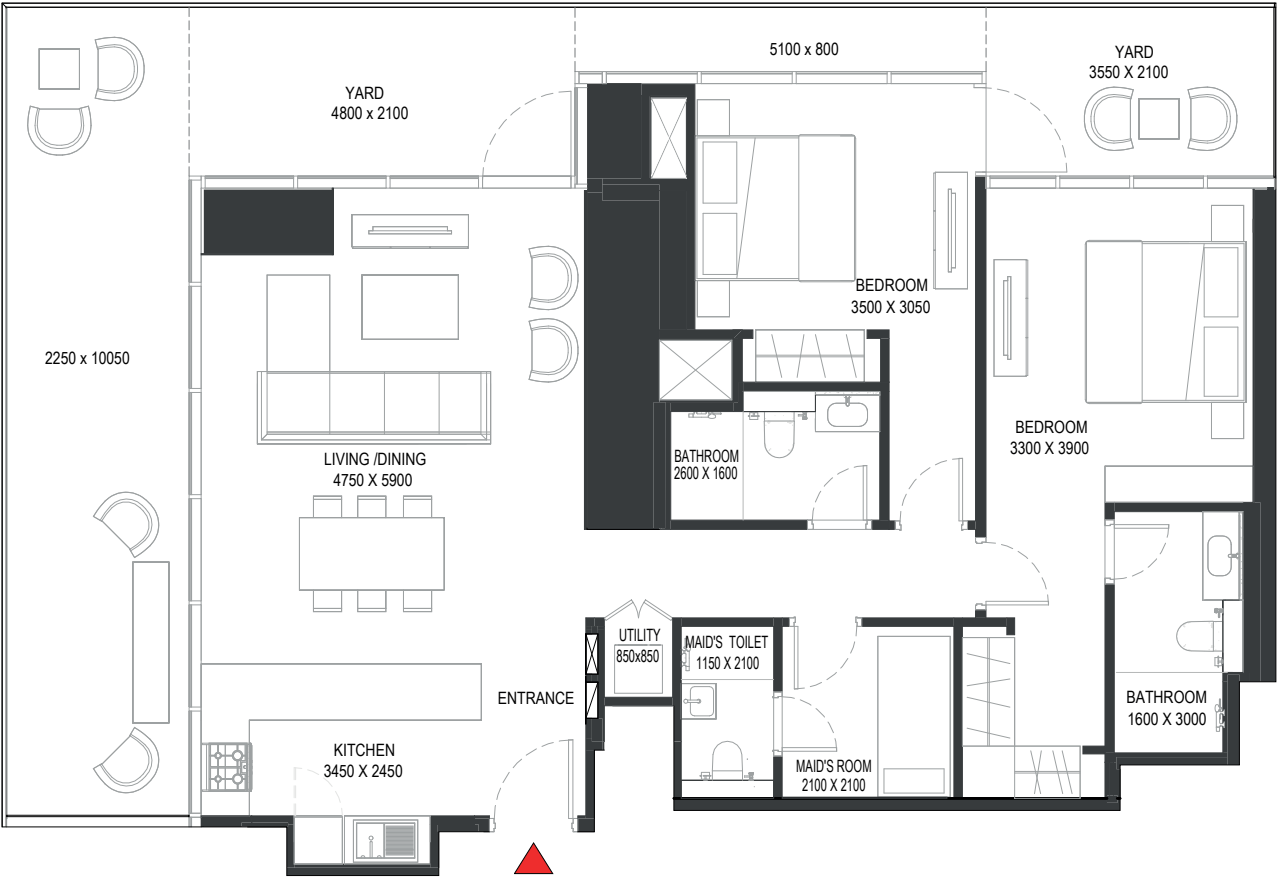
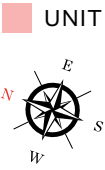
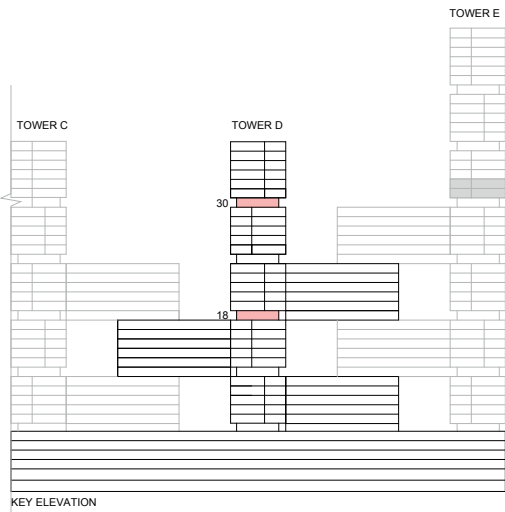
VIEWS

Downtown, Ras Al Khor, Creek, Golf Course, Water body, Amenities
D1208, D2408

Disclaimer: 1. All dimensions are in metric, measured to wall finishes. 2. All materials, dimensions & drawings are approximate. 3. Information is subject to change without notice, at developer's absolute discretion. 4. Actual area may vary from the stated area. 5. Drawing are not to scale. 6. All images used are for illustrative purpose only and do not represent the actual size, features, specifications, fittings and furnishings. 7. The developer reserves the right to make revisions/ alterations, at its absolute discretion, without any liability whatsoever.

2 BEDROOM APARTMENT
TYPE J (with maid room + yard) VARIANT 1

TOTAL SALEABLE AREA
SUITE = 1,200.82 SQ.FT.
YARD = 494.49 SQ.FT.
TOTAL = 1,695.31 SQ.FT.



List of unit numbers with this unit plan:

VIEWS

Downtown, Ras Al Khor, Creek, Golf Course, Water body, Amenities
D1807

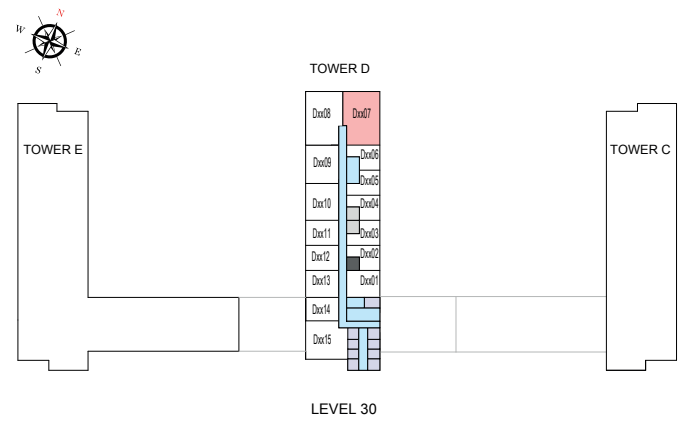
Downtown, Ras Al Khor, Creek, Golf Course, Water body
D3007

Disclaimer: 1. All dimensions are in metric, measured to wall finishes. 2. All materials, dimensions & drawings are approximate. 3. Information is subject to change without notice, at developer's absolute discretion. 4. Actual area may vary from the stated area. 5. Drawing are not to scale. 6. All images used are for illustrative purpose only and do not represent the actual size, features, specifications, fittings and furnishings. 7. The developer reserves the right to make revisions/ alterations, at its absolute discretion, without any liability whatsoever.

2 BEDROOM APARTMENT
TYPE J (with maid room + yard) VARIANT 1

TOTAL SALEABLE AREA
SUITE = 1,200.82 SQ.FT.
YARD = 494.49 SQ.FT.
TOTAL = 1,695.31 SQ.FT.

UNIT



List of unit numbers with this unit plan:

VIEWS

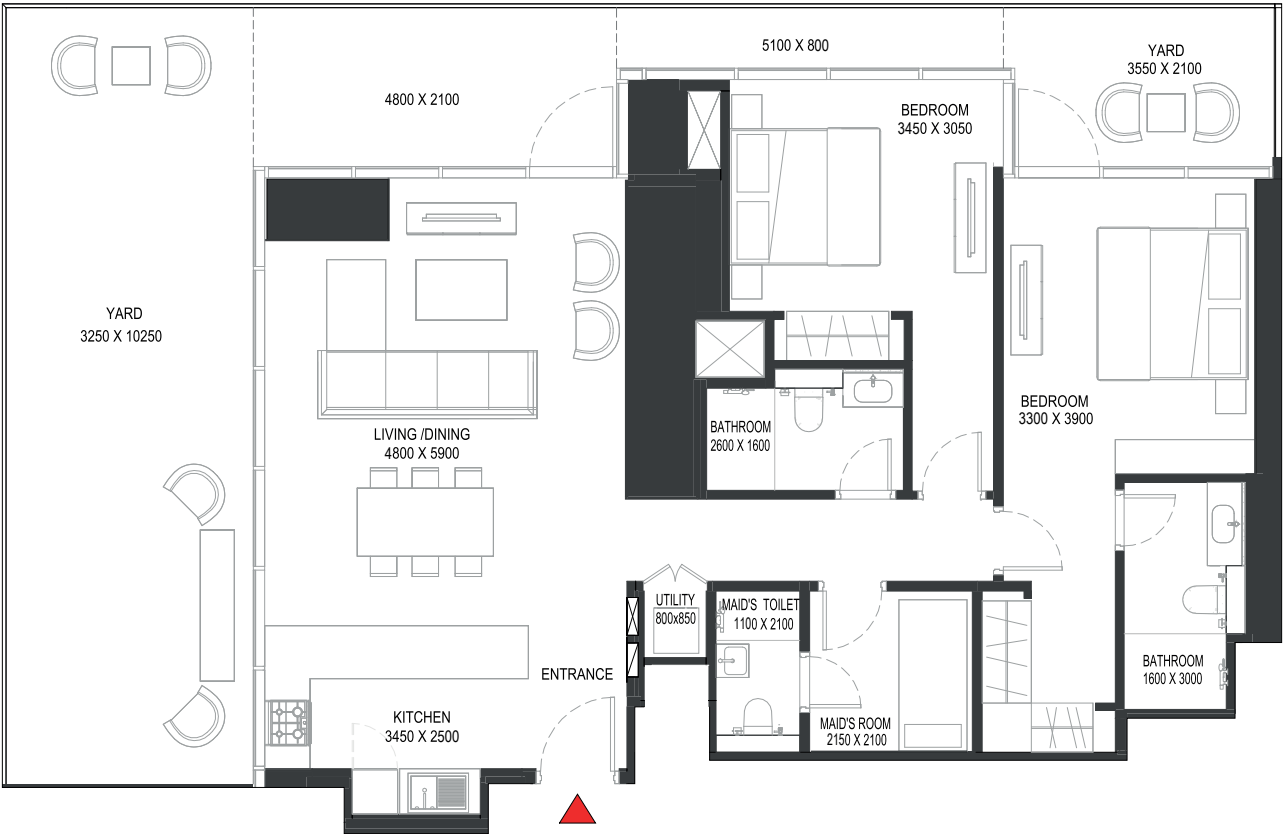
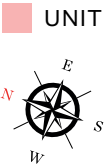
Downtown, Ras Al Khor, Creek, Golf Course, Water body, Amenities
D1807

Downtown, Ras Al Khor, Creek, Golf Course, Water body
D3007

Disclaimer: 1. All dimensions are in metric, measured to wall finishes. 2. All materials, dimensions & drawings are approximate. 3. Information is subject to change without notice, at developer's absolute discretion. 4. Actual area may vary from the stated area. 5. Drawing are not to scale. 6. All images used are for illustrative purpose only and do not represent the actual size, features, specifications, fittings and furnishings. 7. The developer reserves the right to make revisions/ alterations, at its absolute discretion, without any liability whatsoever.

2 BEDROOM APARTMENT
TYPE K (with maid room + yard)

TOTAL SALEABLE AREA
SUITE = 1,201.58 SQ.FT.
YARD = 672.31 SQ.FT.
TOTAL = 1,873.89 SQ.FT.



List of unit numbers with this unit plan:

VIEWS

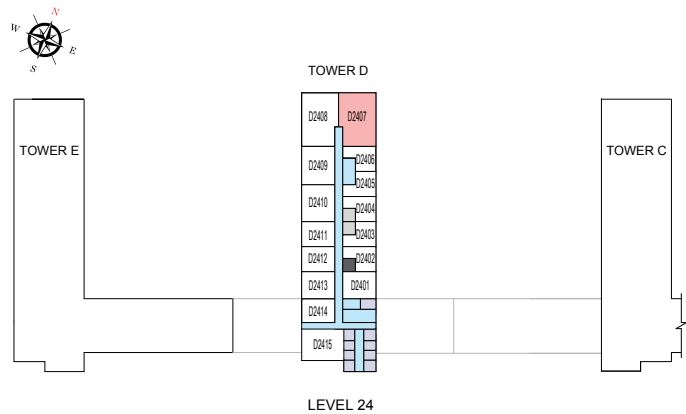
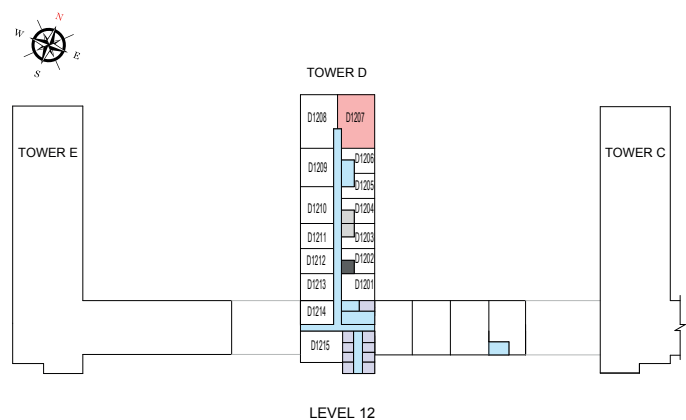
Downtown, Ras Al Khor, Creek, Golf Course, Water body, Amenities
D1207, D2407

Disclaimer: 1. All dimensions are in metric, measured to wall finishes. 2. All materials, dimensions & drawings are approximate. 3. Information is subject to change without notice, at developer's absolute discretion. 4. Actual area may vary from the stated area. 5. Drawing are not to scale. 6. All images used are for illustrative purpose only and do not represent the actual size, features, specifications, fittings and furnishings. 7. The developer reserves the right to make revisions/ alterations, at its absolute discretion, without any liability whatsoever.

2 BEDROOM APARTMENT
TYPE K (with maid room + yard)

TOTAL SALEABLE AREA
SUITE = 1,201.58 SQ.FT.
YARD = 672.31 SQ.FT.
TOTAL = 1,873.89 SQ.FT.

UNIT



List of unit numbers with this unit plan:

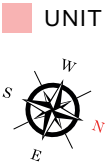
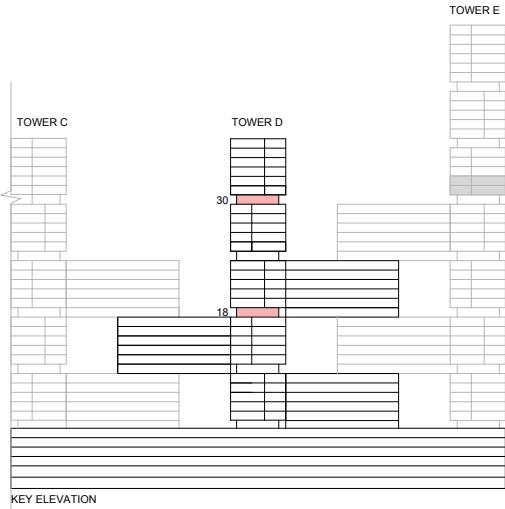
VIEWS

Downtown, Ras Al Khor, Creek, Golf Course, Water body, Amenities
D1207, D2407

Disclaimer: 1. All dimensions are in metric, measured to wall finishes. 2. All materials, dimensions & drawings are approximate. 3. Information is subject to change without notice, at developer's absolute discretion. 4. Actual area may vary from the stated area. 5. Drawing are not to scale. 6. All images used are for illustrative purpose only and do not represent the actual size, features, specifications, fittings and furnishings. 7. The developer reserves the right to make revisions/ alterations, at its absolute discretion, without any liability whatsoever.

2 BEDROOM APARTMENT
TYPE K (with maid room + yard) VARIANT 1

TOTAL SALEABLE AREA
SUITE = 1,201.58 SQ.FT.
YARD = 672.31 SQ.FT.
TOTAL = 1,873.89 SQ.FT.



List of unit numbers with this unit plan:

VIEWS

Downtown, Ras Al Khor, Creek, Golf Course, Water body, Amenities
D1808

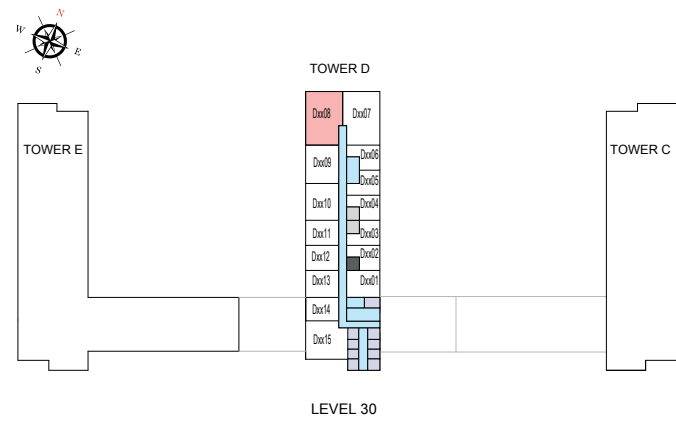
Downtown, Ras Al Khor, Creek, Golf Course, Water body
D3008

Disclaimer: 1. All dimensions are in metric, measured to wall finishes. 2. All materials, dimensions & drawings are approximate. 3. Information is subject to change without notice, at developer's absolute discretion. 4. Actual area may vary from the stated area. 5. Drawing are not to scale. 6. All images used are for illustrative purpose only and do not represent the actual size, features, specifications, fittings and furnishings. 7. The developer reserves the right to make revisions/ alterations, at its absolute discretion, without any liability whatsoever.

2 BEDROOM APARTMENT
TYPE K (with maid room + yard) VARIANT 1

TOTAL SALEABLE AREA
SUITE = 1,201.58 SQ.FT.
YARD = 672.31 SQ.FT.
TOTAL = 1,873.89 SQ.FT.

UNIT



List of unit numbers with this unit plan:

VIEWS

Downtown, Ras Al Khor, Creek, Golf Course, Water body, Amenities
D1808

Downtown, Ras Al Khor, Creek, Golf Course, Water body
D3008

Disclaimer: 1. All dimensions are in metric, measured to wall finishes. 2. All materials, dimensions & drawings are approximate. 3. Information is subject to change without notice, at developer's absolute discretion. 4. Actual area may vary from the stated area. 5. Drawing are not to scale. 6. All images used are for illustrative purpose only and do not represent the actual size, features, specifications, fittings and furnishings. 7. The developer reserves the right to make revisions/ alterations, at its absolute discretion, without any liability whatsoever.

2 BEDROOM APARTMENT

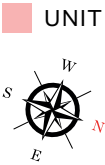
TYPE M (with maid room and powder room + yard)

TOTAL SALEABLE AREA

SUITE = 1,172.62 SQ.FT.

YARD = 292.56 SQ.FT.

TOTAL = 1,465.18 SQ.FT.



List of unit numbers with this unit plan:

VIEWS

Ras Al Khor
D3015

Disclaimer: 1. All dimensions are in metric, measured to wall finishes. 2. All materials, dimensions & drawings are approximate. 3. Information is subject to change without notice, at developer's absolute discretion. 4. Actual area may vary from the stated area. 5. Drawing are not to scale. 6. All images used are for illustrative purpose only and do not represent the actual size, features, specifications, fittings and furnishings. 7. The developer reserves the right to make revisions/ alterations, at its absolute discretion, without any liability whatsoever.

2 BEDROOM APARTMENT

TYPE M (with maid room and powder room + yard)

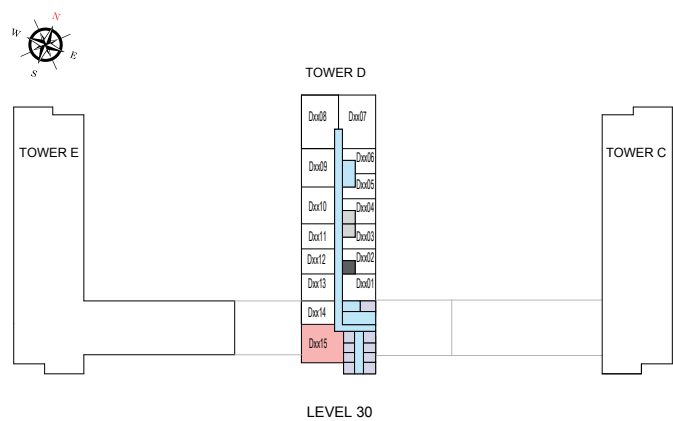
TOTAL SALEABLE AREA

SUITE = 1,172.62 SQ.FT.

YARD = 292.56 SQ.FT.

TOTAL = 1,465.18 SQ.FT.

UNIT



List of unit numbers with this unit plan:

VIEWS

Ras Al Khor
D3015

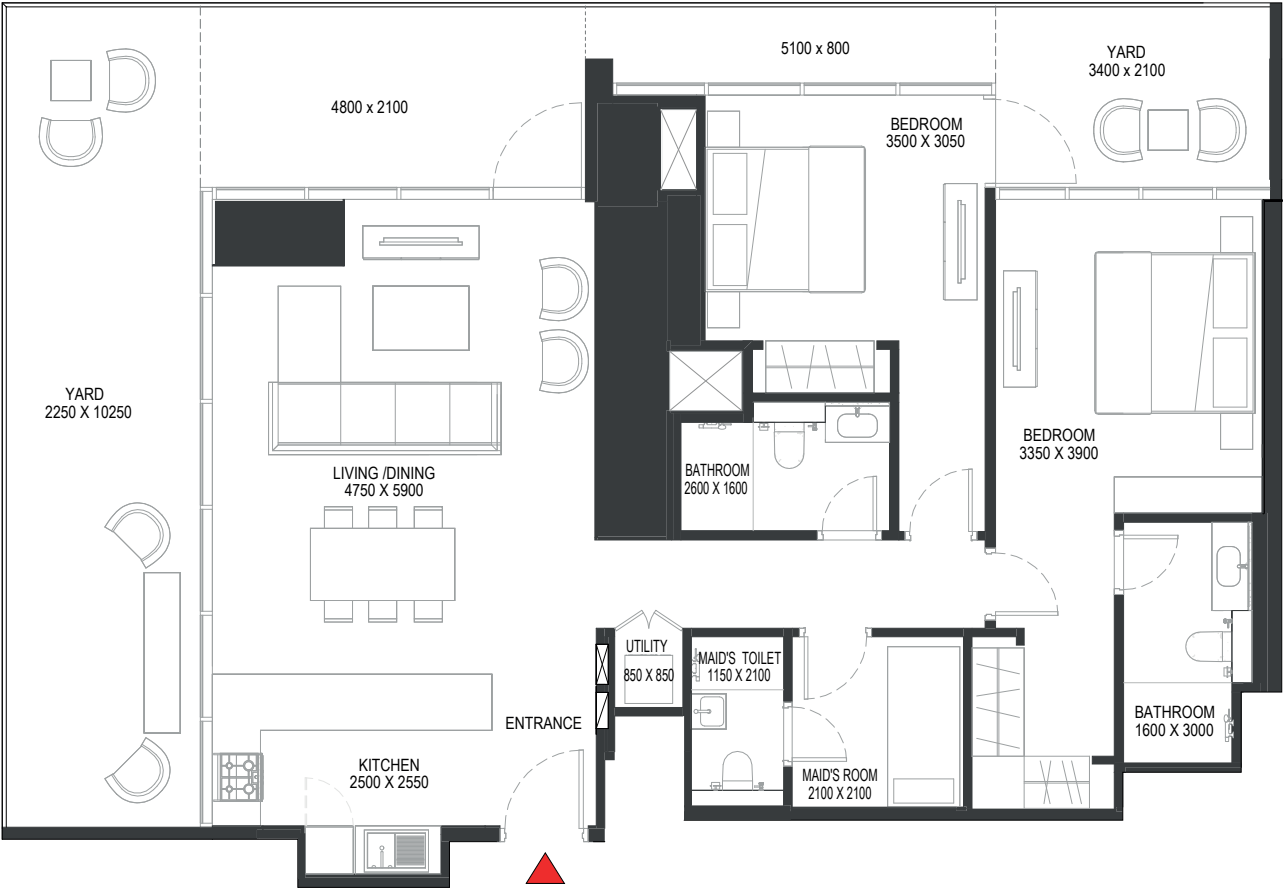
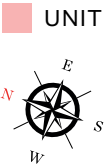
Disclaimer: 1. All dimensions are in metric, measured to wall finishes. 2. All materials, dimensions & drawings are approximate. 3. Information is subject to change without notice, at developer's absolute discretion. 4. Actual area may vary from the stated area. 5. Drawing are not to scale. 6. All images used are for illustrative purpose only and do not represent the actual size, features, specifications, fittings and furnishings. 7. The developer reserves the right to make revisions/ alterations, at its absolute discretion, without any liability whatsoever.

2 BEDROOM APARTMENT

TYPE R (with maid room + yard)

TOTAL SALEABLE AREA

SUITE = 1,191.89 SQ.FT.
YARD = 499.01 SQ.FT.
TOTAL = 1,690.90 SQ.FT.



List of unit numbers with this unit plan:

VIEWS

Downtown, Ras Al Khor, Creek, Golf Course, Water body, Amenities
D1307

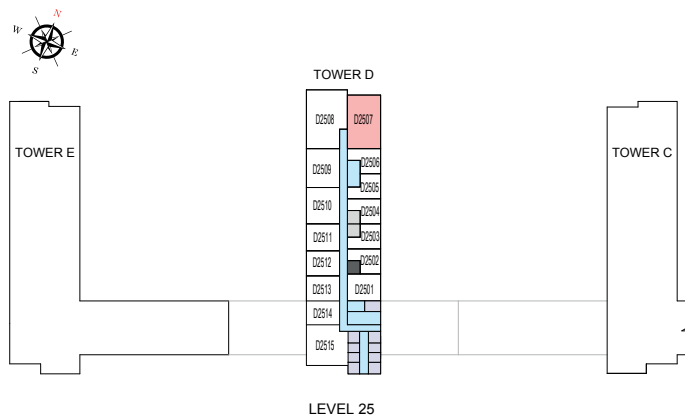
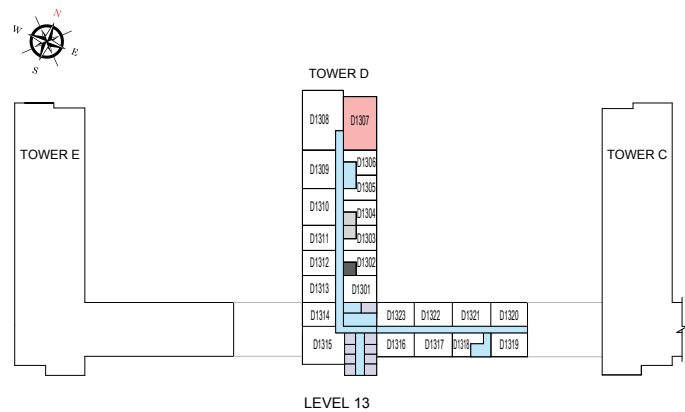
Downtown, Ras Al Khor, Creek, Golf Course, Water body
D2507

Disclaimer: 1. All dimensions are in metric, measured to wall finishes. 2. All materials, dimensions & drawings are approximate. 3. Information is subject to change without notice, at developer's absolute discretion. 4. Actual area may vary from the stated area. 5. Drawing are not to scale. 6. All images used are for illustrative purpose only and do not represent the actual size, features, specifications, fittings and furnishings. 7. The developer reserves the right to make revisions/ alterations, at its absolute discretion, without any liability whatsoever.

2 BEDROOM APARTMENT
TYPE R (with maid room + yard)

TOTAL SALEABLE AREA
SUITE = 1,191.89 SQ.FT.
YARD = 499.01 SQ.FT.
TOTAL = 1,690.90 SQ.FT.

UNIT



List of unit numbers with this unit plan:

VIEWS

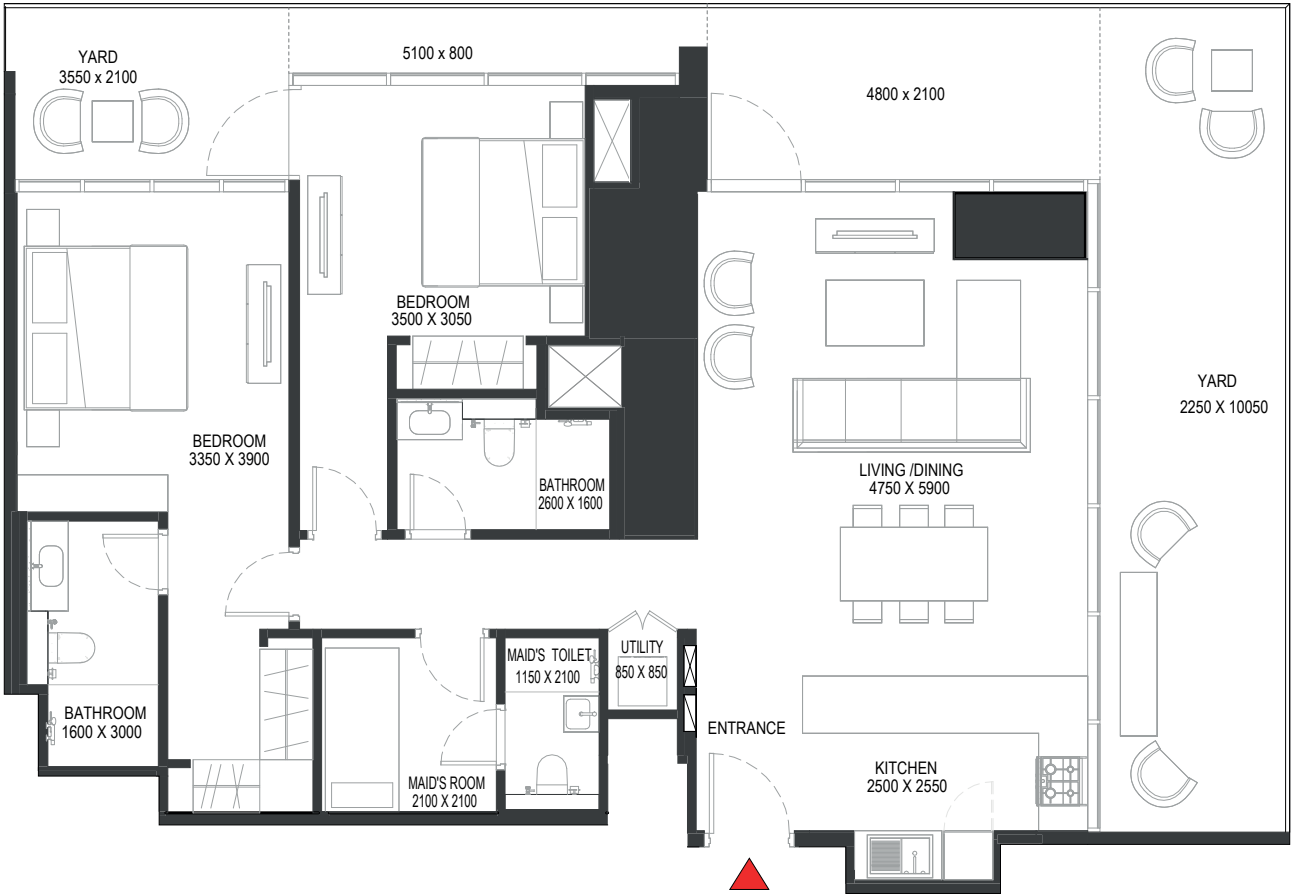
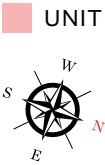
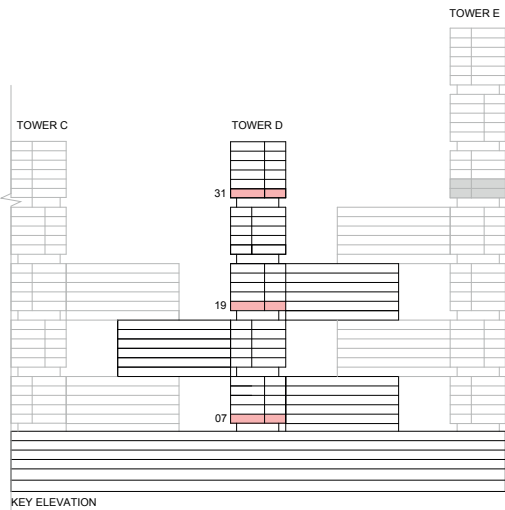
Downtown, Ras Al Khor, Creek, Golf Course, Water body, Amenities
D1307

Downtown, Ras Al Khor, Creek, Golf Course, Water body
D2507

Disclaimer: 1. All dimensions are in metric, measured to wall finishes. 2. All materials, dimensions & drawings are approximate. 3. Information is subject to change without notice, at developer's absolute discretion. 4. Actual area may vary from the stated area. 5. Drawing are not to scale. 6. All images used are for illustrative purpose only and do not represent the actual size, features, specifications, fittings and furnishings. 7. The developer reserves the right to make revisions/ alterations, at its absolute discretion, without any liability whatsoever.

2 BEDROOM APARTMENT
TYPE R (with maid room + yard) VARIANT 1

TOTAL SALEABLE AREA
SUITE = 1,191.89 SQ.FT.
YARD = 499.01 SQ.FT.
TOTAL = 1,690.90 SQ.FT.



List of unit numbers with this unit plan:

VIEWS

Downtown, Ras Al Khor, Creek, Golf Course, Water body, Amenities
D708, D1908

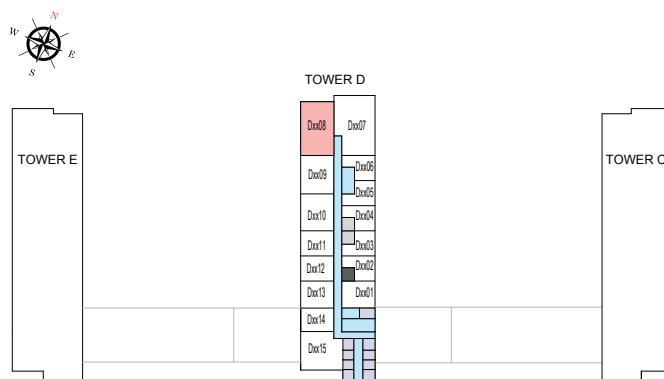
Downtown, Ras Al Khor, Creek, Golf Course, Water body
D3108

Disclaimer: 1. All dimensions are in metric, measured to wall finishes. 2. All materials, dimensions & drawings are approximate. 3. Information is subject to change without notice, at developer's absolute discretion. 4. Actual area may vary from the stated area. 5. Drawing are not to scale. 6. All images used are for illustrative purpose only and do not represent the actual size, features, specifications, fittings and furnishings. 7. The developer reserves the right to make revisions/ alterations, at its absolute discretion, without any liability whatsoever.

TYPE R (with maid room + yard) VARIANT 1

TOTAL = 1,690.90 SQ.FT.

LEVEL 07,19



LEVEL 31

Disclaimer: 1. All dimensions are in metric, measured to wall finishes. 2. All materials, dimensions & drawings are approximate. 3. Information is subject to change without notice, at developer's absolute discretion. 4. Actual area may vary from the stated area. 5. Drawing are not to scale. 6. All images used are for illustrative purpose only and do not represent the actual size, features, specifications, fittings and furnishings. 7. The developer reserves the right to make revisions/ alterations, at its absolute discretion, without any liability whatsoever.

2 BEDROOM APARTMENT

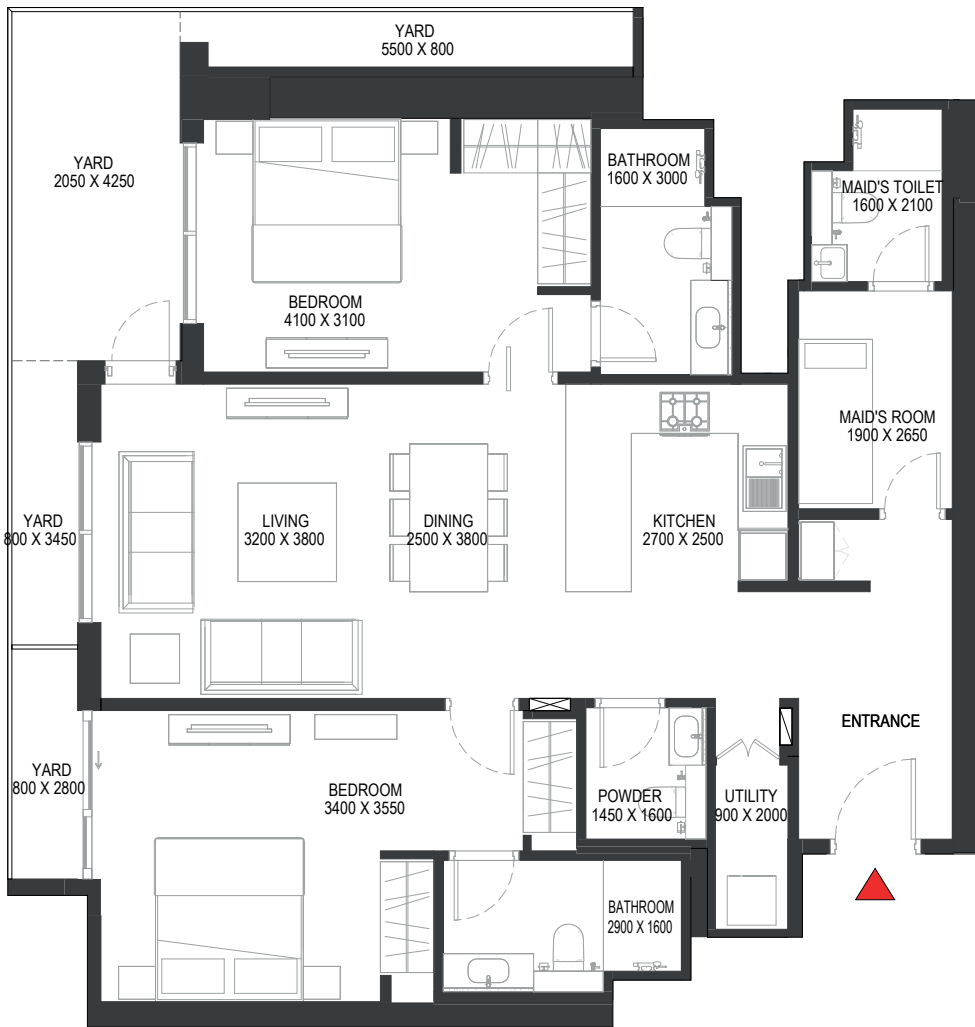
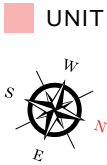
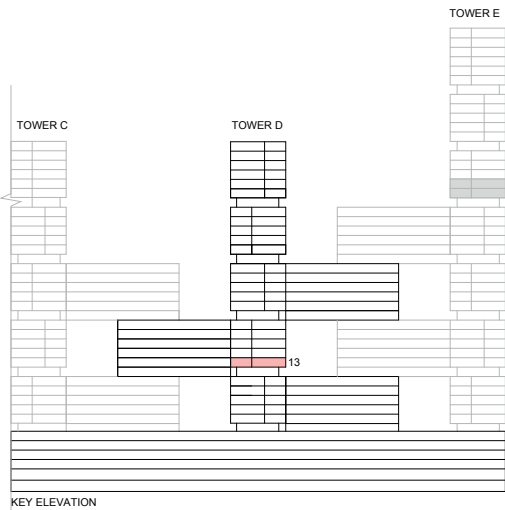
TYPE U (with maid room and powder room + yard)

TOTAL SALEABLE AREA

SUITE = 1,179.40 SQ.FT.

YARD = 227.76 SQ.FT.

TOTAL = 1,407.16 SQ.FT.



List of unit numbers with this unit plan:

VIEWS

Ras Al Khor, Amenities
D1315

Disclaimer: 1. All dimensions are in metric, measured to wall finishes. 2. All materials, dimensions & drawings are approximate. 3. Information is subject to change without notice, at developer's absolute discretion. 4. Actual area may vary from the stated area. 5. Drawing are not to scale. 6. All images used are for illustrative purpose only and do not represent the actual size, features, specifications, fittings and furnishings. 7. The developer reserves the right to make revisions/ alterations, at its absolute discretion, without any liability whatsoever.

2 BEDROOM APARTMENT

TYPE U (with maid room and powder room + yard)

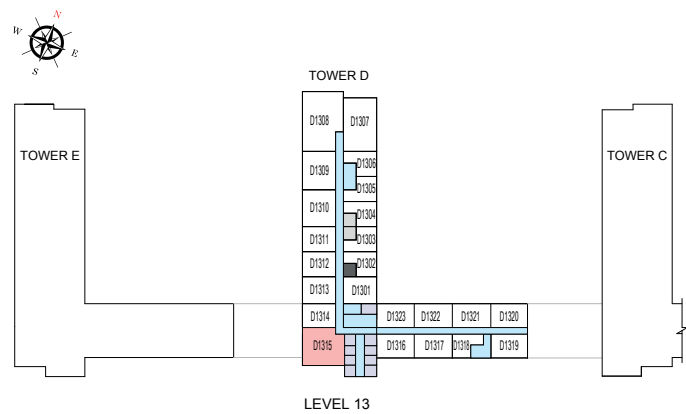
TOTAL SALEABLE AREA

SUITE = 1,179.40 SQ.FT.

YARD = 227.76 SQ.FT.

TOTAL = 1,407.16 SQ.FT.

UNIT



List of unit numbers with this unit plan:

VIEWS

Ras Al Khor, Amenities
D1315

Disclaimer: 1. All dimensions are in metric, measured to wall finishes. 2. All materials, dimensions & drawings are approximate. 3. Information is subject to change without notice, at developer's absolute discretion. 4. Actual area may vary from the stated area. 5. Drawing are not to scale. 6. All images used are for illustrative purpose only and do not represent the actual size, features, specifications, fittings and furnishings. 7. The developer reserves the right to make revisions/ alterations, at its absolute discretion, without any liability whatsoever.

2 BEDROOM APARTMENT

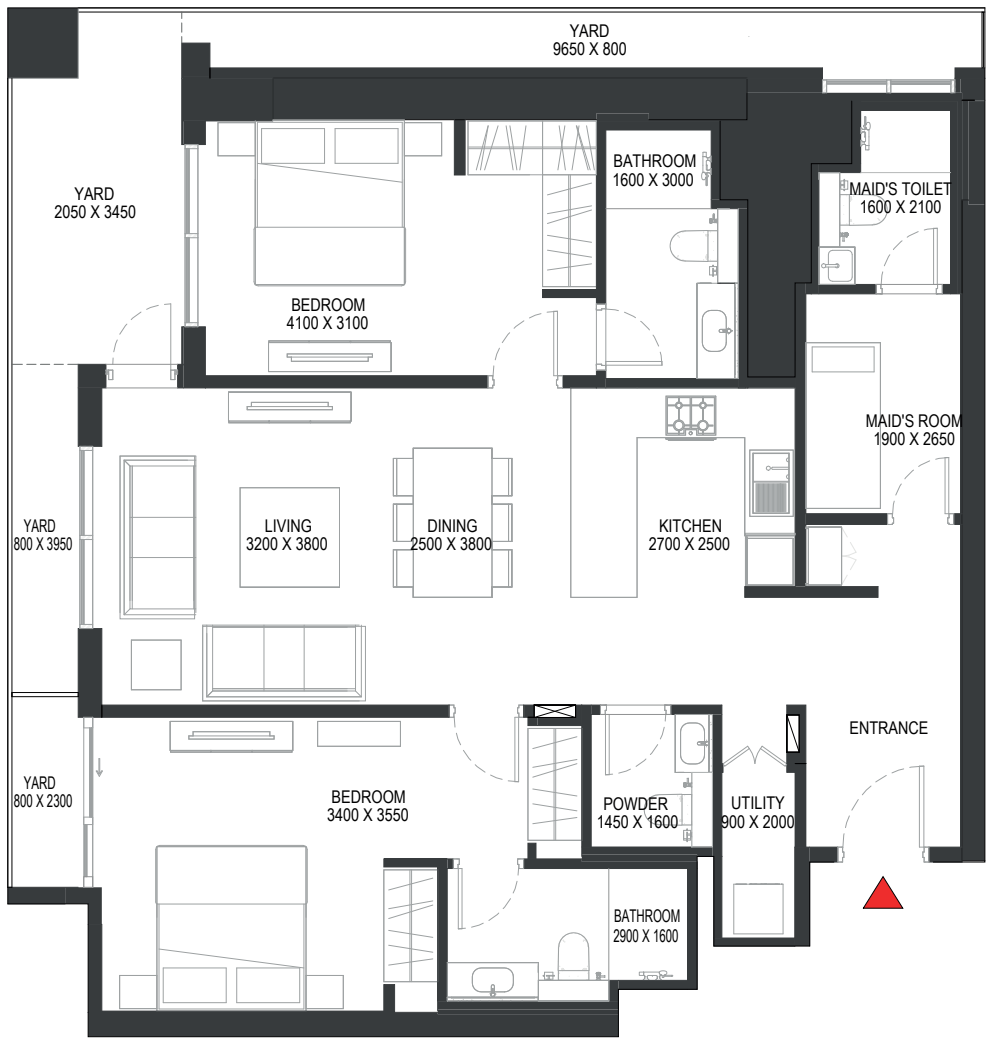
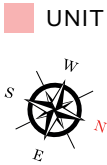
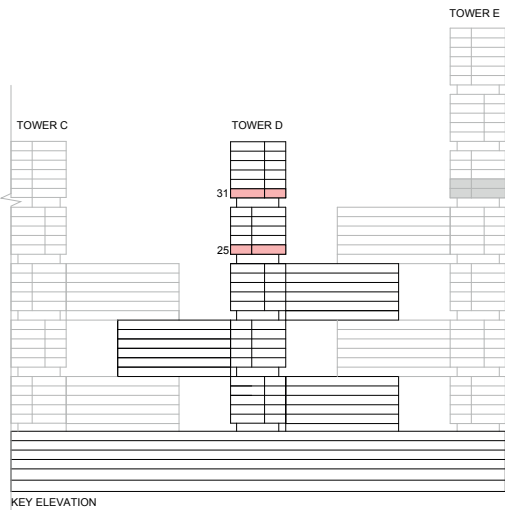
TYPE U (with maid room and powder room + yard) VARIANT 1

TOTAL SALEABLE AREA

SUITE = 1,179.40 SQ.FT.

YARD = 271.25 SQ.FT.

TOTAL = 1,450.65 SQ.FT.



List of unit numbers with this unit plan:

VIEWS

Ras Al Khor
D2515, D3115

Disclaimer: 1. All dimensions are in metric, measured to wall finishes. 2. All materials, dimensions & drawings are approximate. 3. Information is subject to change without notice, at developer's absolute discretion. 4. Actual area may vary from the stated area. 5. Drawing are not to scale. 6. All images used are for illustrative purpose only and do not represent the actual size, features, specifications, fittings and furnishings. 7. The developer reserves the right to make revisions/ alterations, at its absolute discretion, without any liability whatsoever.

2 BEDROOM APARTMENT

TYPE U (with maid room and powder room + yard) VARIANT 1

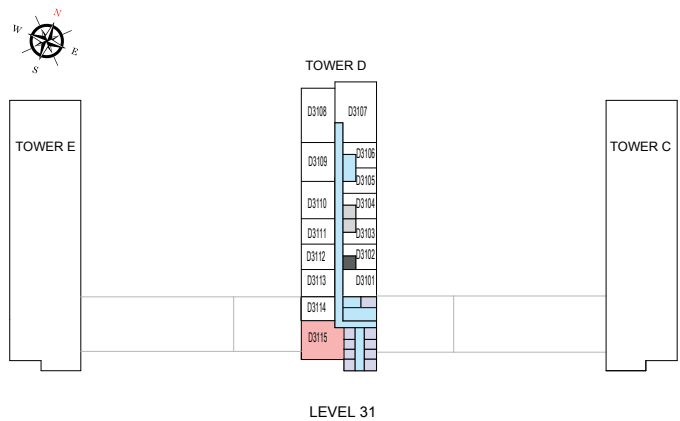
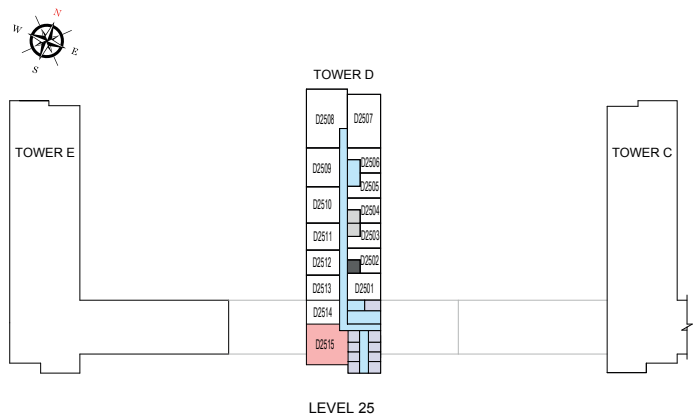
TOTAL SALEABLE AREA

SUITE = 1,179.40 SQ.FT.

YARD = 271.25 SQ.FT.

TOTAL = 1,450.65 SQ.FT.

UNIT



List of unit numbers with this unit plan:

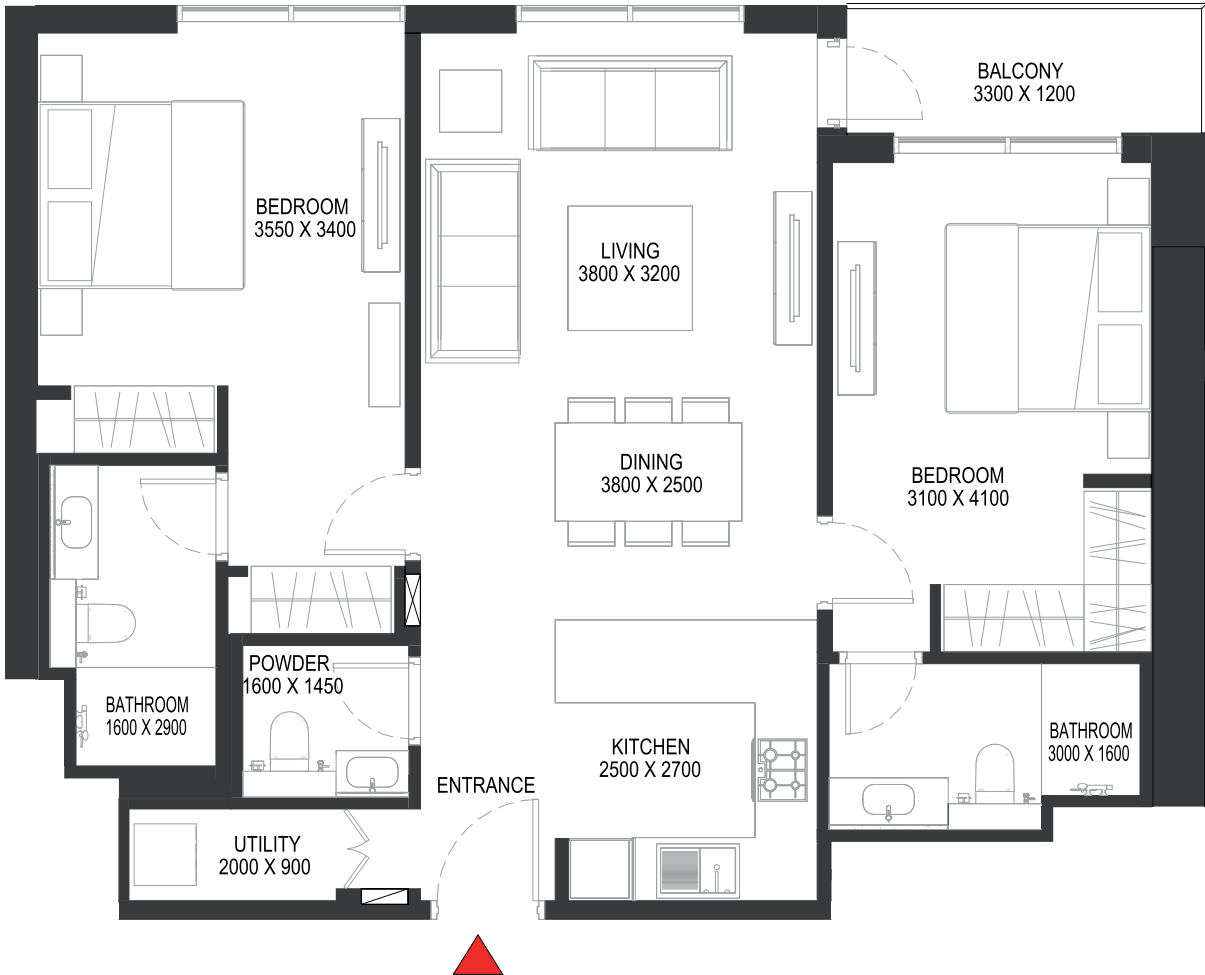
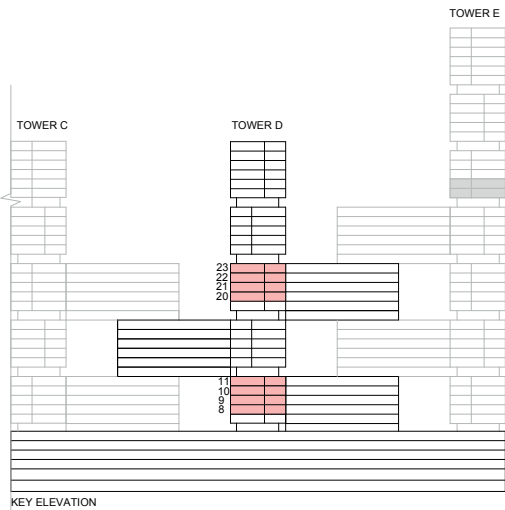
VIEWS

Ras Al Khor
D2515, D3115

Disclaimer: 1. All dimensions are in metric, measured to wall finishes. 2. All materials, dimensions & drawings are approximate. 3. Information is subject to change without notice, at developer's absolute discretion. 4. Actual area may vary from the stated area. 5. Drawing are not to scale. 6. All images used are for illustrative purpose only and do not represent the actual size, features, specifications, fittings and furnishings. 7. The developer reserves the right to make revisions/ alterations, at its absolute discretion, without any liability whatsoever.

2 BEDROOM APARTMENT
TYPE W (with powder room + balcony)

TOTAL SALEABLE AREA
SUITE = 961.97 SQ.FT.
BALCONY = 51.56 SQ.FT.
TOTAL = 1,013.53 SQ.FT.



List of unit numbers with this unit plan:

VIEWS

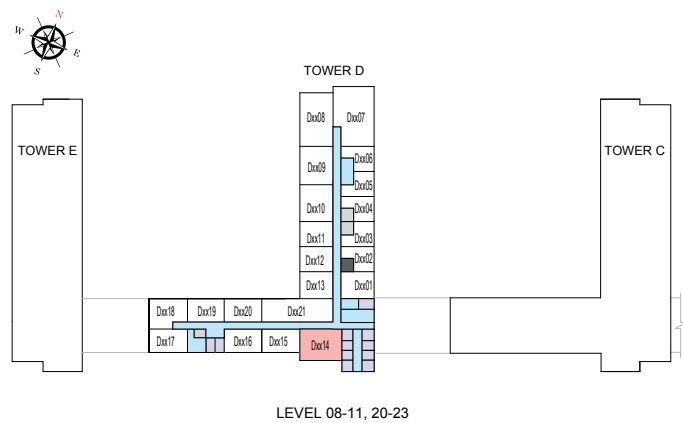
City View
D814, D914, D1014, D1114, D2014, D2114, D2214, D2314

Disclaimer: 1. All dimensions are in metric, measured to wall finishes. 2. All materials, dimensions & drawings are approximate. 3. Information is subject to change without notice, at developer's absolute discretion. 4. Actual area may vary from the stated area. 5. Drawing are not to scale. 6. All images used are for illustrative purpose only and do not represent the actual size, features, specifications, fittings and furnishings. 7. The developer reserves the right to make revisions/ alterations, at its absolute discretion, without any liability whatsoever.

2 BEDROOM APARTMENT
TYPE W (with powder room + balcony)

TOTAL SALEABLE AREA
SUITE = 961.97 SQ.FT.
BALCONY = 51.56 SQ.FT.
TOTAL = 1,013.53 SQ.FT.

UNIT



List of unit numbers with this unit plan:

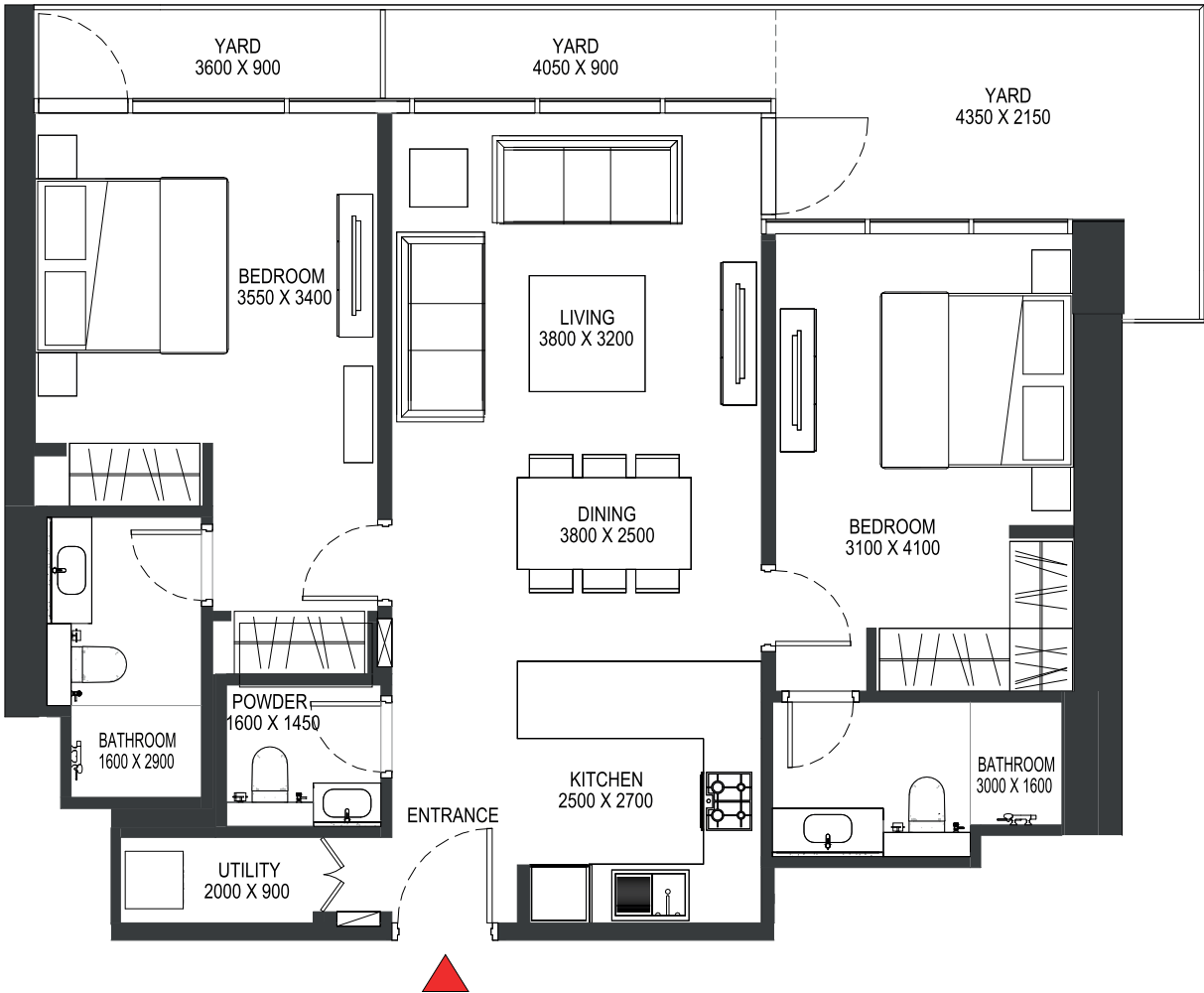
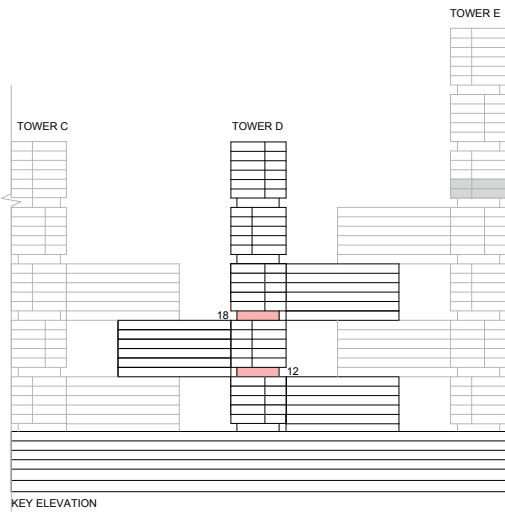
VIEWS

City View
D814, D914, D1014, D1114, D2014, D2114, D2214, D2314

Disclaimer: 1. All dimensions are in metric, measured to wall finishes. 2. All materials, dimensions & drawings are approximate. 3. Information is subject to change without notice, at developer's absolute discretion. 4. Actual area may vary from the stated area. 5. Drawing are not to scale. 6. All images used are for illustrative purpose only and do not represent the actual size, features, specifications, fittings and furnishings. 7. The developer reserves the right to make revisions/ alterations, at its absolute discretion, without any liability whatsoever.

2 BEDROOM APARTMENT
TYPE X (with powder room + yard)

TOTAL SALEABLE AREA
SUITE = 955.30 SQ.FT.
YARD = 198.16 SQ.FT.
TOTAL = 1,153.46 SQ.FT.



List of unit numbers with this unit plan:

VIEWS

Ras Al Khor, Amenities
D1215

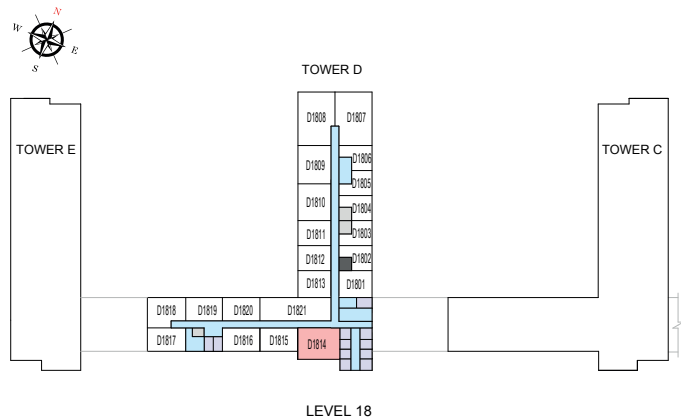
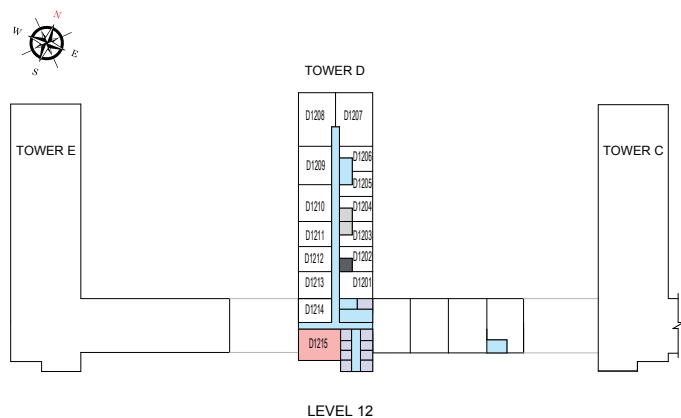
City View
D1814

Disclaimer: 1. All dimensions are in metric, measured to wall finishes. 2. All materials, dimensions & drawings are approximate. 3. Information is subject to change without notice, at developer's absolute discretion. 4. Actual area may vary from the stated area. 5. Drawing are not to scale. 6. All images used are for illustrative purpose only and do not represent the actual size, features, specifications, fittings and furnishings. 7. The developer reserves the right to make revisions/ alterations, at its absolute discretion, without any liability whatsoever.

2 BEDROOM APARTMENT
TYPE X (with powder room + yard)

TOTAL SALEABLE AREA
SUITE = 955.30 SQ.FT.
YARD = 198.16 SQ.FT.
TOTAL = 1,153.46 SQ.FT.

UNIT



List of unit numbers with this unit plan:

VIEWS

Ras Al Khor, Amenities
D1215

City View
D1814

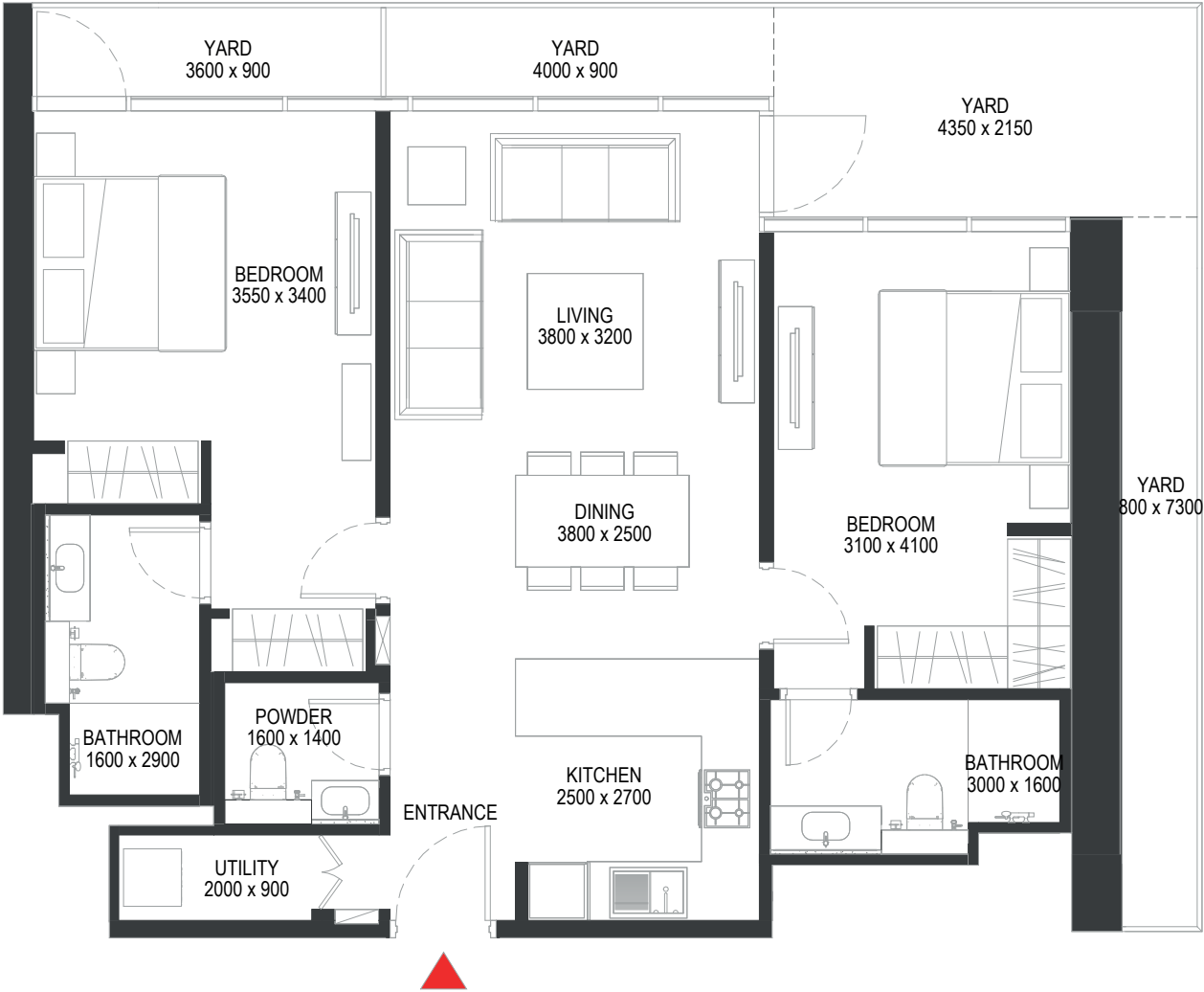
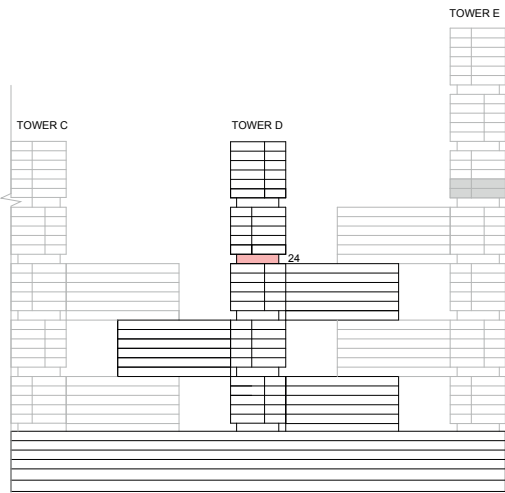
Disclaimer: 1. All dimensions are in metric, measured to wall finishes. 2. All materials, dimensions & drawings are approximate. 3. Information is subject to change without notice, at developer's absolute discretion. 4. Actual area may vary from the stated area. 5. Drawing are not to scale. 6. All images used are for illustrative purpose only and do not represent the actual size, features, specifications, fittings and furnishings. 7. The developer reserves the right to make revisions/ alterations, at its absolute discretion, without any liability whatsoever.

2 BEDROOM APARTMENT

TYPE X (with powder room + yard) VARIANT 1

TOTAL SALEABLE AREA

SUITE = 955.30 SQ.FT.
YARD = 271.36 SQ.FT.
TOTAL = 1,226.66 SQ.FT.



VIEWS

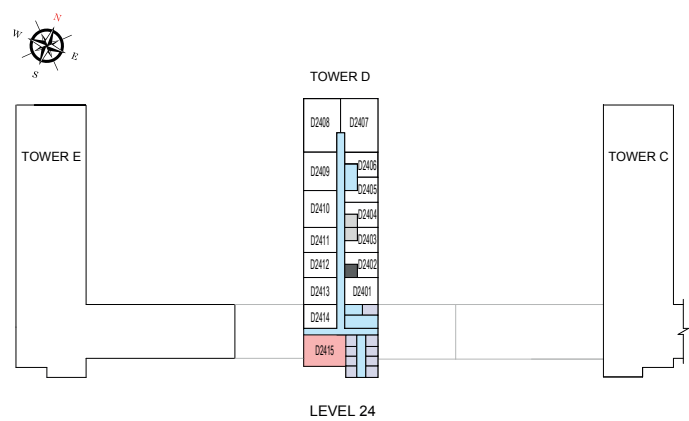
Ras Al Khor, Amenities
D2415

Disclaimer: 1. All dimensions are in metric, measured to wall finishes. 2. All materials, dimensions & drawings are approximate. 3. Information is subject to change without notice, at developer's absolute discretion. 4. Actual area may vary from the stated area. 5. Drawing are not to scale. 6. All images used are for illustrative purpose only and do not represent the actual size, features, specifications, fittings and furnishings. 7. The developer reserves the right to make revisions/ alterations, at its absolute discretion, without any liability whatsoever.

2 BEDROOM APARTMENT
TYPE X (with powder room + yard) VARIANT 1

TOTAL SALEABLE AREA
SUITE = 955.30 SQ.FT.
YARD = 271.36 SQ.FT.
TOTAL = 1,226.66 SQ.FT.

UNIT



List of unit numbers with this unit plan:

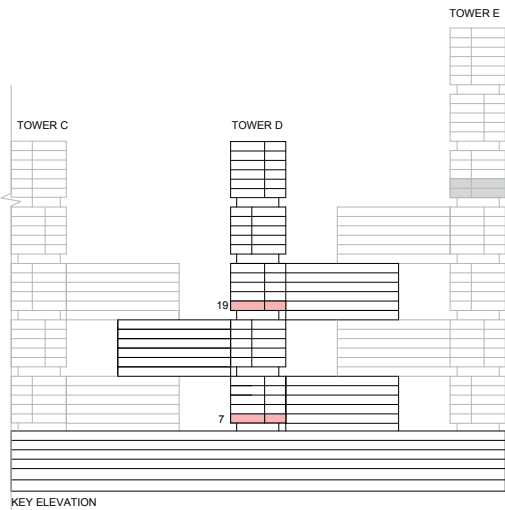
VIEWS

Ras Al Khor, Amenities
D2415

Disclaimer: 1. All dimensions are in metric, measured to wall finishes. 2. All materials, dimensions & drawings are approximate. 3. Information is subject to change without notice, at developer's absolute discretion. 4. Actual area may vary from the stated area. 5. Drawing are not to scale. 6. All images used are for illustrative purpose only and do not represent the actual size, features, specifications, fittings and furnishings. 7. The developer reserves the right to make revisions/ alterations, at its absolute discretion, without any liability whatsoever.

2 BEDROOM APARTMENT
TYPE Y (with powder room + yard)

TOTAL SALEABLE AREA
SUITE = 962.08 SQ.FT.
YARD = 173.84 SQ.FT.
TOTAL = 1,135.92 SQ.FT.



List of unit numbers with this unit plan:

VIEWS

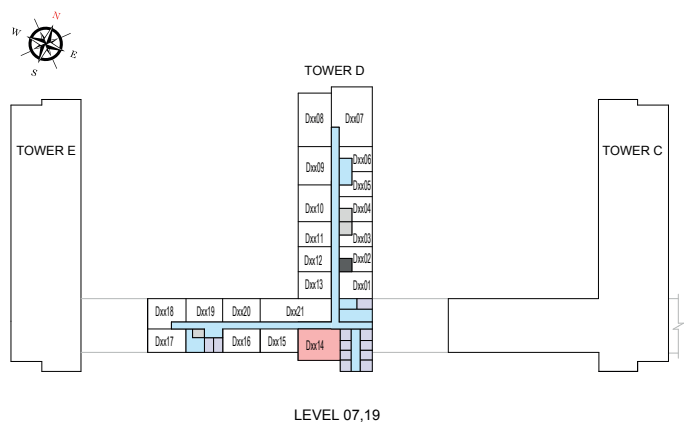
City View
D714, D1914

Disclaimer: 1. All dimensions are in metric, measured to wall finishes. 2. All materials, dimensions & drawings are approximate. 3. Information is subject to change without notice, at developer's absolute discretion. 4. Actual area may vary from the stated area. 5. Drawing are not to scale. 6. All images used are for illustrative purpose only and do not represent the actual size, features, specifications, fittings and furnishings. 7. The developer reserves the right to make revisions/ alterations, at its absolute discretion, without any liability whatsoever.

2 BEDROOM APARTMENT
TYPE Y (with powder room + yard)

TOTAL SALEABLE AREA
SUITE = 962.08 SQ.FT.
YARD = 173.84 SQ.FT.
TOTAL = 1,135.92 SQ.FT.

UNIT



List of unit numbers with this unit plan:

VIEWS

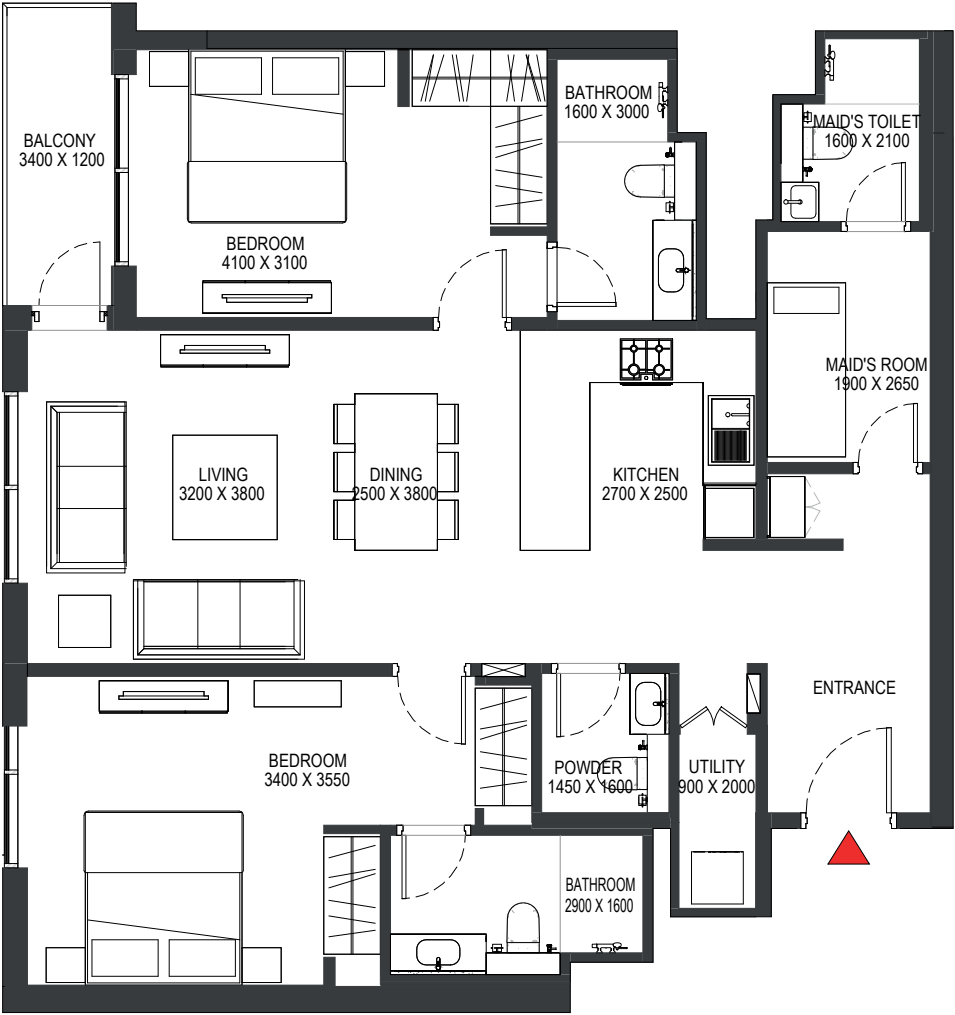
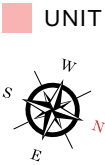
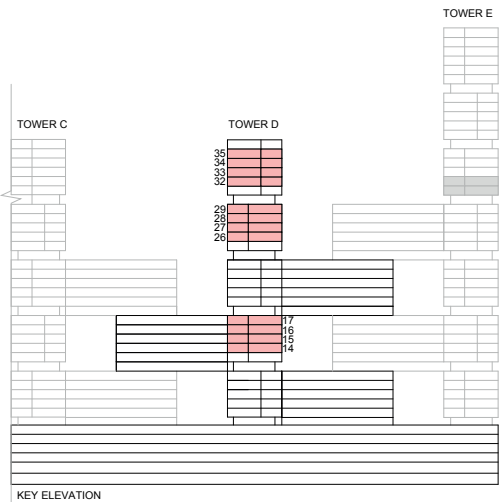
City View
D714, D1914

Disclaimer: 1. All dimensions are in metric, measured to wall finishes. 2. All materials, dimensions & drawings are approximate. 3. Information is subject to change without notice, at developer's absolute discretion. 4. Actual area may vary from the stated area. 5. Drawing are not to scale. 6. All images used are for illustrative purpose only and do not represent the actual size, features, specifications, fittings and furnishings. 7. The developer reserves the right to make revisions/ alterations, at its absolute discretion, without any liability whatsoever.

2 BEDROOM APARTMENT

TYPE Z (with powder room and maid room + balcony)

TOTAL SALEABLE AREA
SUITE = 1,179.40 SQ.FT.
BALCONY = 51.56 SQ.FT.
TOTAL = 1,230.96 SQ.FT.



List of unit numbers with this unit plan:

VIEWS

Ras Al Khor, Amenities
D1415, D1515, D1615, D1715

Ras Al Khor
D2615, D2715, D2815, D2915, D3215, D3315, D3415, D3515

Disclaimer: 1. All dimensions are in metric, measured to wall finishes. 2. All materials, dimensions & drawings are approximate. 3. Information is subject to change without notice, at developer's absolute discretion. 4. Actual area may vary from the stated area. 5. Drawing are not to scale. 6. All images used are for illustrative purpose only and do not represent the actual size, features, specifications, fittings and furnishings. 7. The developer reserves the right to make revisions/ alterations, at its absolute discretion, without any liability whatsoever.

2 BEDROOM APARTMENT

TYPE Z (with powder room and maid room + balcony)

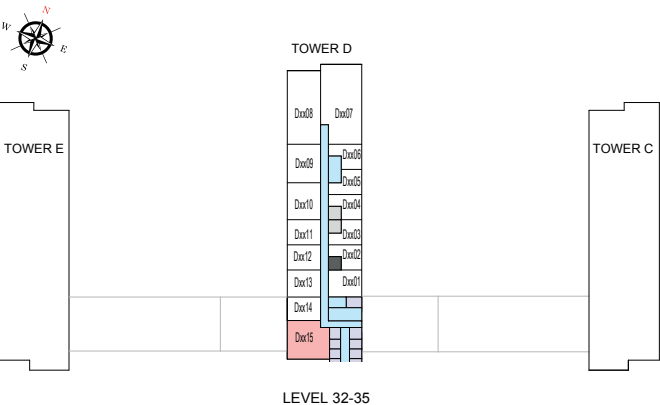
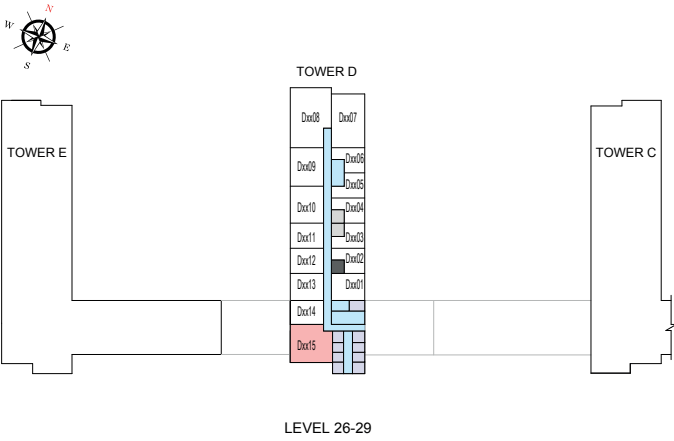
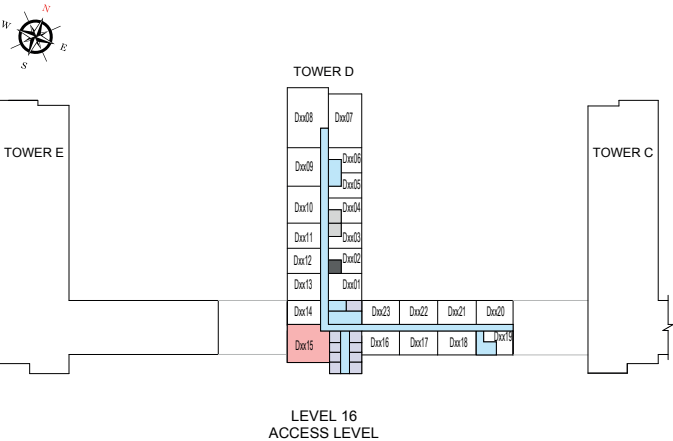
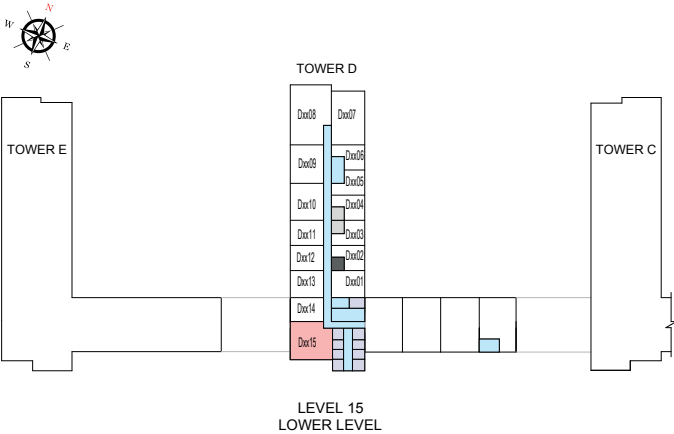
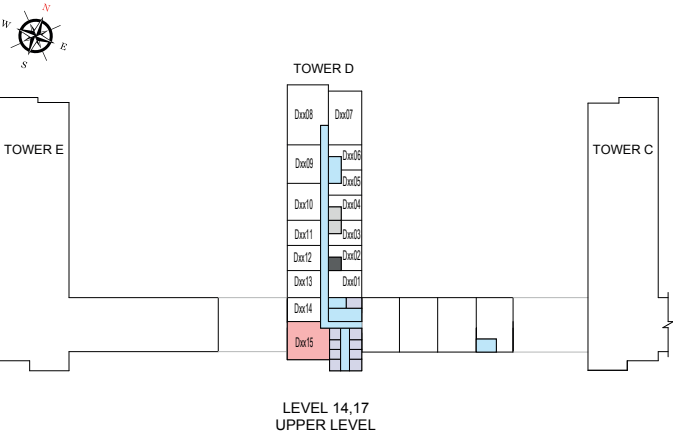
TOTAL SALEABLE AREA

SUITE = 1,179.40 SQ.FT.

BALCONY = 51.56 SQ.FT.

TOTAL = 1,230.96 SQ.FT.

UNIT



List of unit numbers with this unit plan:

VIEWS

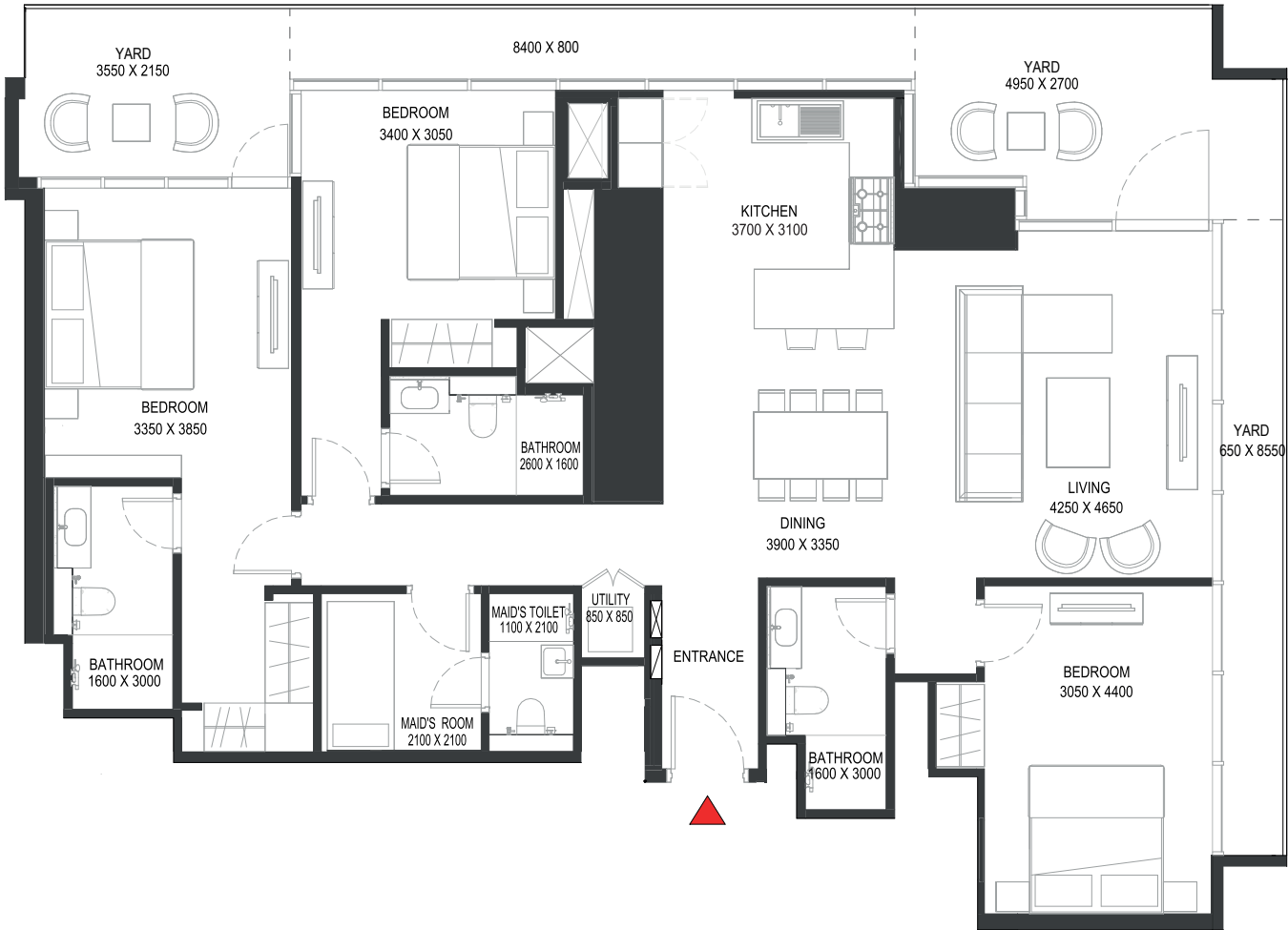
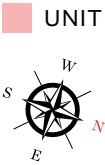
Ras Al Khor, Amenities
D1415, D1515, D1615, D1715

Ras Al Khor
D2615, D2715, D2815, D2915, D3215, D3315, D3415, D3515

Disclaimer: 1. All dimensions are in metric, measured to wall finishes. 2. All materials, dimensions & drawings are approximate. 3. Information is subject to change without notice, at developer's absolute discretion. 4. Actual area may vary from the stated area. 5. Drawing are not to scale. 6. All images used are for illustrative purpose only and do not represent the actual size, features, specifications, fittings and furnishings. 7. The developer reserves the right to make revisions/ alterations, at its absolute discretion, without any liability whatsoever.

3 BEDROOM APARTMENT
TYPE F (with maid room + yard)

TOTAL SALEABLE AREA
SUITE = 1,517.07 SQ.FT.
YARD = 363.93 SQ.FT.
TOTAL = 1,881.00 SQ.FT.



List of unit numbers with this unit plan:

VIEWS

Downtown, Ras Al Khor, Creek, Golf Course, Water body, Amenities
D1308

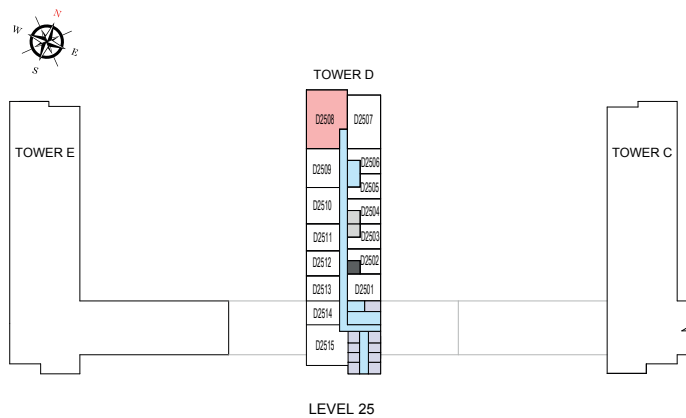
Downtown, Ras Al Khor, Creek, Golf Course, Water body
D2508

Disclaimer: 1. All dimensions are in metric, measured to wall finishes. 2. All materials, dimensions & drawings are approximate. 3. Information is subject to change without notice, at developer's absolute discretion. 4. Actual area may vary from the stated area. 5. Drawing are not to scale. 6. All images used are for illustrative purpose only and do not represent the actual size, features, specifications, fittings and furnishings. 7. The developer reserves the right to make revisions/ alterations, at its absolute discretion, without any liability whatsoever.

3 BEDROOM APARTMENT
TYPE F (with maid room + yard)

TOTAL SALEABLE AREA
SUITE = 1,517.07 SQ.FT.
YARD = 363.93 SQ.FT.
TOTAL = 1,881.00 SQ.FT.

UNIT



List of unit numbers with this unit plan:

VIEWS

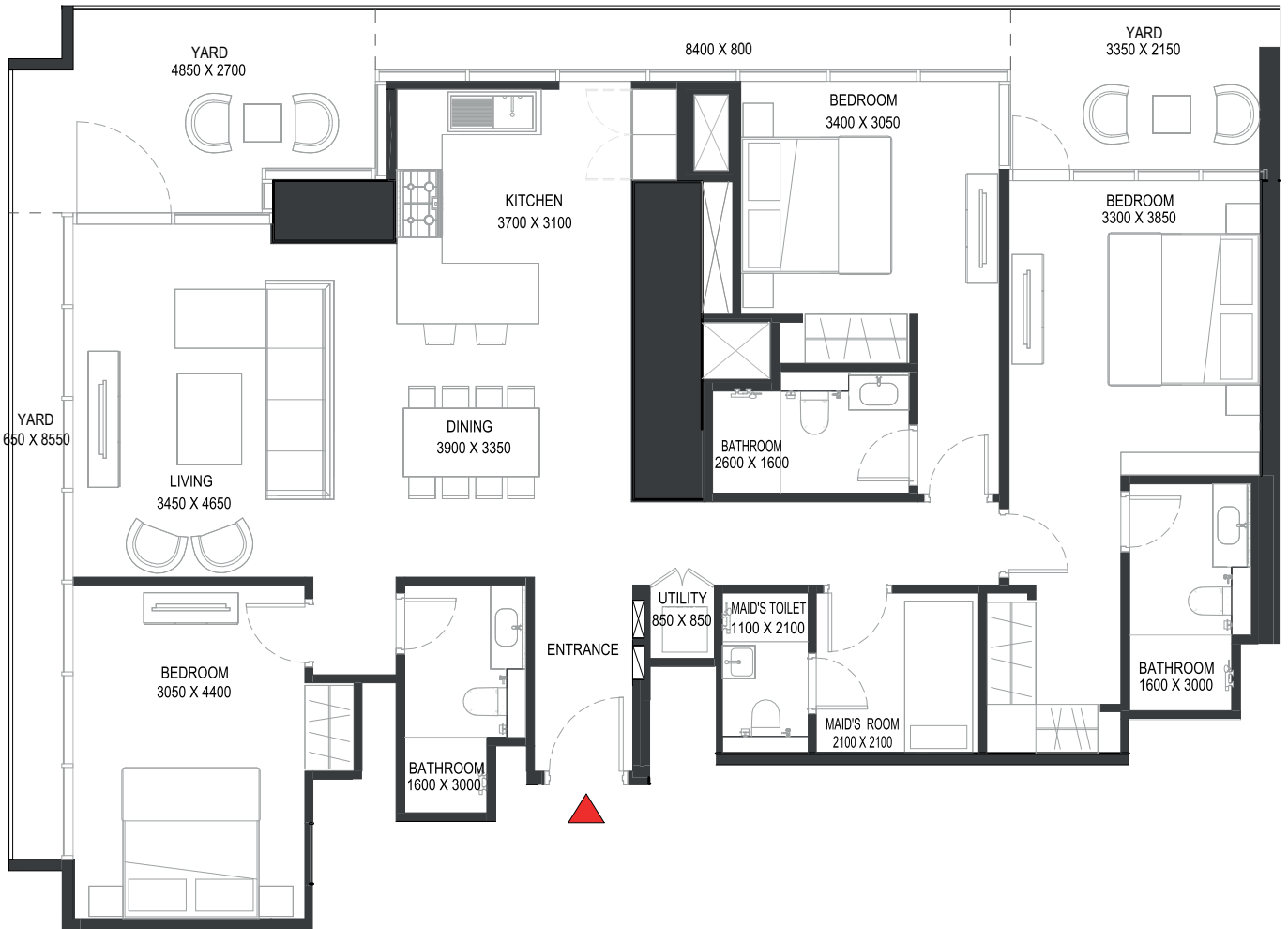
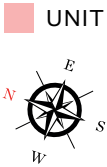
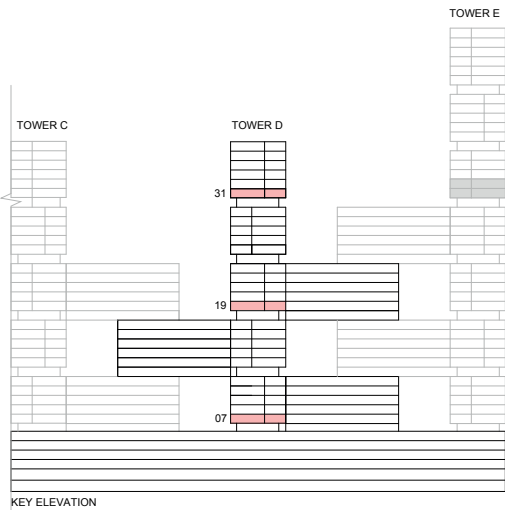
Downtown, Ras Al Khor, Creek, Golf Course, Water body, Amenities
D1308

Downtown, Ras Al Khor, Creek, Golf Course, Water body
D2508

Disclaimer: 1. All dimensions are in metric, measured to wall finishes. 2. All materials, dimensions & drawings are approximate. 3. Information is subject to change without notice, at developer's absolute discretion. 4. Actual area may vary from the stated area. 5. Drawing are not to scale. 6. All images used are for illustrative purpose only and do not represent the actual size, features, specifications, fittings and furnishings. 7. The developer reserves the right to make revisions/ alterations, at its absolute discretion, without any liability whatsoever.

3 BEDROOM APARTMENT
TYPE F (with maid room + yard) VARIANT 1

TOTAL SALEABLE AREA
SUITE = 1,517.07 SQ.FT.
YARD = 363.93 SQ.FT.
TOTAL = 1,881.00 SQ.FT.



List of unit numbers with this unit plan:

VIEWS

Downtown, Ras Al Khor, Creek, Golf Course, Water body, Amenities
D707, D1907

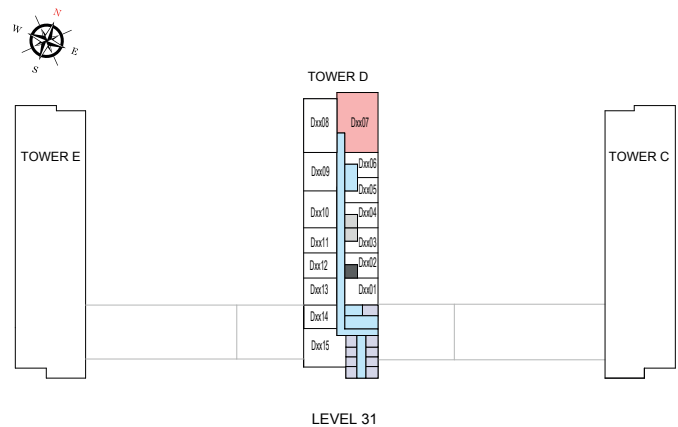
Downtown, Ras Al Khor, Creek, Golf Course, Water body
D3107

Disclaimer: 1. All dimensions are in metric, measured to wall finishes. 2. All materials, dimensions & drawings are approximate. 3. Information is subject to change without notice, at developer's absolute discretion. 4. Actual area may vary from the stated area. 5. Drawing are not to scale. 6. All images used are for illustrative purpose only and do not represent the actual size, features, specifications, fittings and furnishings. 7. The developer reserves the right to make revisions/ alterations, at its absolute discretion, without any liability whatsoever.

3 BEDROOM APARTMENT
TYPE F (with maid room + yard)

TOTAL SALEABLE AREA
SUITE = 1,517.07 SQ.FT.
YARD = 363.93 SQ.FT.
TOTAL = 1,881.00 SQ.FT.

UNIT



List of unit numbers with this unit plan:

VIEWS

Downtown, Ras Al Khor, Creek, Golf Course, Water body, Amenities
D707, D1907

Downtown, Ras Al Khor, Creek, Golf Course, Water body
D3107

Disclaimer: 1. All dimensions are in metric, measured to wall finishes. 2. All materials, dimensions & drawings are approximate. 3. Information is subject to change without notice, at developer's absolute discretion. 4. Actual area may vary from the stated area. 5. Drawing are not to scale. 6. All images used are for illustrative purpose only and do not represent the actual size, features, specifications, fittings and furnishings. 7. The developer reserves the right to make revisions/ alterations, at its absolute discretion, without any liability whatsoever.