



SOBHA ONE

SOBHA  
REALTY





# ONE

THE JOURNEY BEGINS

ONE that brings you  
closer to nature





ONE

THAT INSPIRES AND AWES

A place where you can take  
one day at a time





ONE

BE ONESELF

It's one of a kind, like you





One where the world is  
close yet far away



# THE POWER OF ONE



*When imagination and vision  
come together Life meets style.*

City and nature hum together,  
Work & play find a balance and become One



A large flock of swans is captured in flight over a body of water during sunset. The sky is a deep, warm orange, and the water reflects the light. The swans are silhouetted against the bright sky, creating a sense of movement and grace.

# ONE WAY: YOUR WAY

The best places are hidden in plain sight

Near the vital Ras Al Khor Road, Sobha One is a little world tucked away. Look to the north at the calming waters of the Creek as they look back. Further north in the skyline with panoramic views of The Burj Khalifa, Creek Tower to the Northeast and Downtown to the West.





# ARRIVE & DEPART WITH GRACE

Sobha One is right near two new interchanges on Ras Al Khor Road. So, getting home has never been faster. With exits in both the West and East, a new planned metro line behind Sobha One, soar where you need to be on your terms.







# LIVING BY THE WATER

Imagine waking up each morning next to serene water. The sun glints off the water, casting a sparkling path across the ripples. A light breeze blows, rustling the leaves of the nearby trees.

It's yours to stroll down the pathway or sit peacefully watching the calm waters. Go on, spend lazy weekends lounging near the water, reading, and soaking up the sun.





# ONE POINT OF VIEW: YOURS

With a canvas spread over 1.5 million square feet, its breathtaking views as far as your eye can see. Look around to views of Golf Course, calm water, iconic Burj Khalifa & Downtown. Every glance sets a different mood.





# ONE

SPACE

Sobha One spreads its tapestry over five interlinked towers. Rising from 30 stories tall and hitting a crescendo of 65 stories, it's one note after another that sings in chorus with the skyline

With 1 to 4 bedroom apartments & 2 to 4 bedroom Duplex, it's a world of its own.







# ONE FOR ALL ALL FOR ONE



*Life is too short to settle for anything less than  
the best. At Sobha One, luxury living is a  
natural choice.*



# TEE OFF IN STYLE

The first of its kind in Dubai, a world class Pitch and Putt golf course featuring 18 holes of golf, each meticulously designed.

It is the perfect way to unwind after a long day at work. After all, there's nothing like sinking a long putt on a sun-drenched fairway. The clubhouse is appointed with upscale amenities and a patio overlooking the greens.





# DINE BY THE WATERS

The food & beverage esplanade that borders the calm waters is also a feast for the palate to suit every taste and time.

Spread over almost half a kilometer, it offers fine restaurants for an intimate dinner, quick catch-up over a cup of coffee, or a power lunch.





# SKY GARDEN

Rise high above and look at the stars. Soak in the stunning views of the city. Catch the sun rays when they rise and set. Do it all from the magnificent panoramic sky terrace in each tower





# COURTYARD FOR THE SENSES



*All the 5 Towers at Sobha One have interconnected four themed courtyards. As private outdoor retreats, these lush, landscaped spaces add to the overall aesthetic.*



# RELAX

In a fast-paced world, finding ways to relax is more important than ever. Take a leisurely stroll through the tree avenues, do yoga on the group decks, or stroll in the gardens. And when you need to refuel, enjoy a meal at the BBQ & dining areas or catch a movie under the stars on our cinema screen. There is something for everyone







# REMEMBER

The family courtyard is a great way to spend quality time together. You can pack a picnic lunch and enjoy the beautiful weather. Or spending a day cooling off in the water, splashing with the little ones. So, come on down and make memories with your loved ones!







# RECHARGE

We believe that fitness should be fun! That's why we've created a unique courtyard that combines the best of gyms with exciting new indoor and outdoor features from static bikes, treadmills, circuit training areas and battle ropes. So sweat it out and be the best version of yourself.





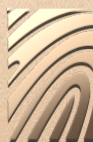


# REFRESH

This themed courtyard is the way to do just that after a long day. Step into the pool area, and the stress of daily life melts away. Feel your muscles loosening and your mind clearing as you swim laps. Close your eyes and let the warm sun wash over you, lulling you into a state of relaxation.







SOBHA ONE



### FLEXIBLE PAYMENT PLAN

60%

During Construction

40%

On Completion

Grand 1 to 4 Bedroom apartments



ONE

*awaits you...*



## LOCATION MAP



RAS AL KHOR  
WILDLIFE SANCTUARY  
05 MINUTES



MEYDAN  
RACE COURSE  
10 MINUTES



SOBHA HARTLAND &  
2 INTERNATIONAL SCHOOLS  
10 MINUTES



DUBAI INTERNATIONAL  
AIRPORT  
12 MINUTES



BUSINESS BAY  
12 MINUTES



THE DUBAI MALL  
15 MINUTES



BURJ KHALIFA &  
DOWNTOWN DUBAI  
15 MINUTES



DUBAI FRAME  
15 MINUTES



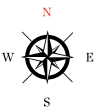
DUBAI OPERA  
15 MINUTES



PALM JUMEIRAH  
25 MINUTES

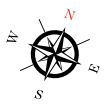
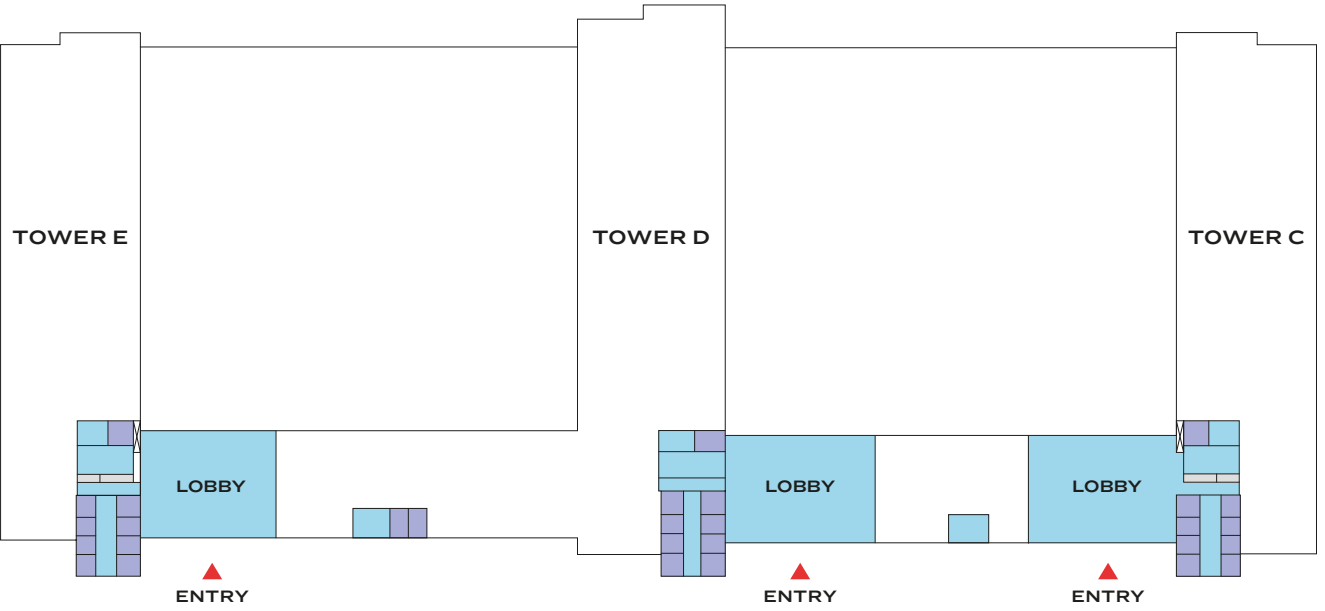


# MASTER PLAN





GROUND FLOOR



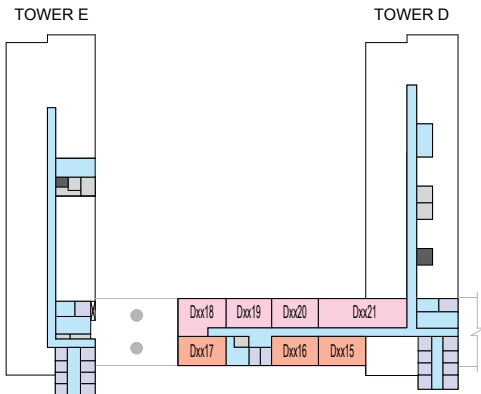


**TOWER D & E**  
**FLOOR PLAN LAYOUTS**  
**(LINK UNITS)**

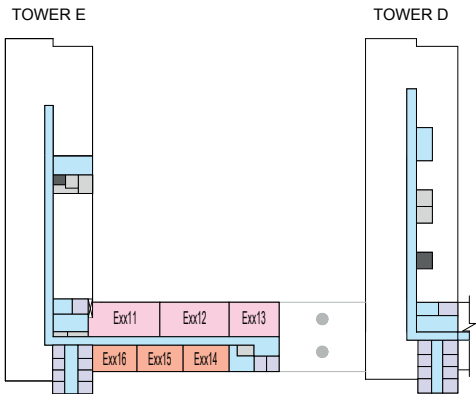


# FLOOR PLAN LAYOUT

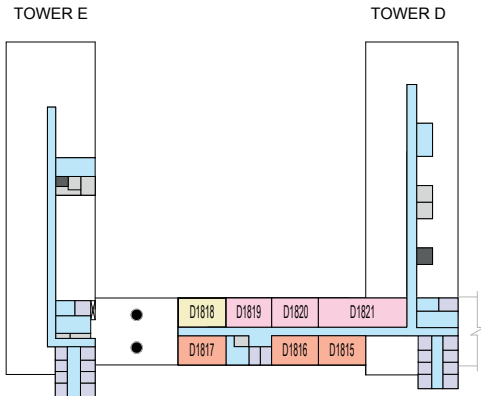
## TOWER D & E (LINK UNITS)



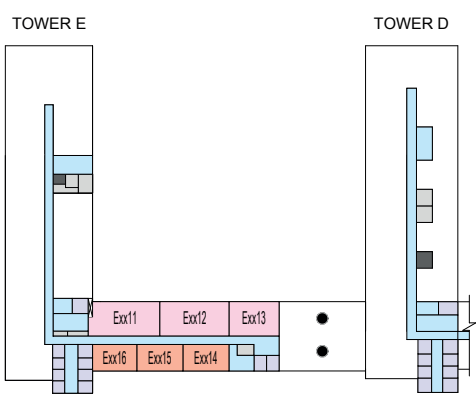
LEVEL 07-11, 19-23



LEVEL 13-17, 25-29



LEVEL 18



LEVEL 12, 24

- 1 BED UNIT
- 2 BED UNIT
- LOBBIES, CORRIDORS & STAIRS
- LIFTS
- 1.5 BED UNIT
- SERVICES
- GARBAGE ROOM

Disclaimer: 1. All dimensions are in metric, measured to wall finishes. 2. All materials, dimensions & drawings are approximate. 3. Information is subject to change without notice, at developer's absolute discretion. 4. Actual area may vary from the stated area. 5. Drawing are not to scale. 6. All images used are for illustrative purpose only and do not represent the actual size, features, specifications, fittings and furnishings. 7. The developer reserves the right to make revisions/ alterations, at its absolute discretion, without any liability whatsoever.

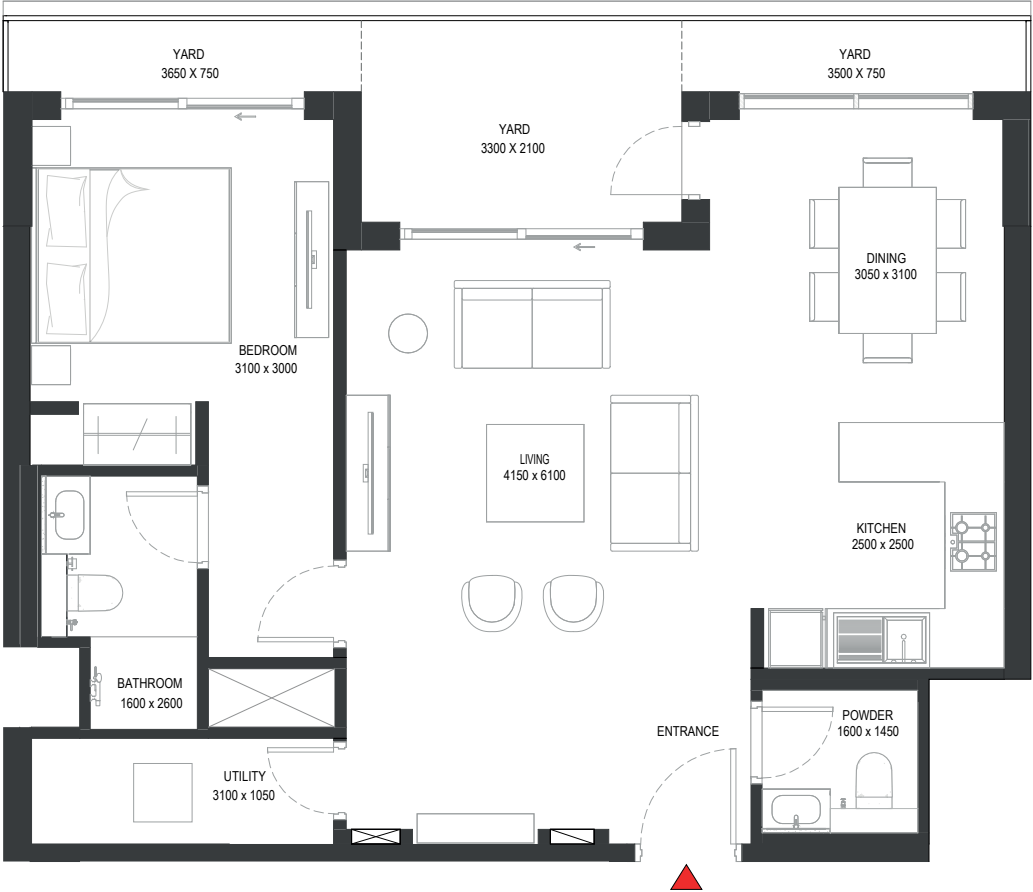
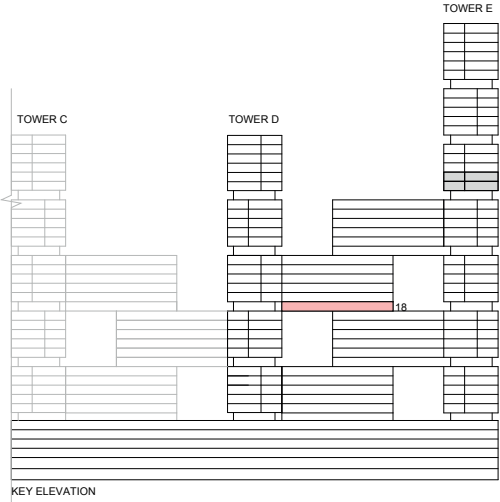


TOWER D & E  
UNIT PLAN LAYOUTS  
(LINK UNITS)



1 BEDROOM LINK APARTMENT  
TYPE A (with powder room + yard) VARIANT 1

TOTAL SALEABLE AREA  
SUITE = 780.49 SQ.FT.  
YARD = 148.11 SQ.FT.  
TOTAL = 928.60 SQ.FT.



List of unit numbers with this unit plan:

VIEWS

Ras Al Khor, Golf Course, Creek, Amenities  
D1818

Disclaimer: 1. All dimensions are in metric, measured to wall finishes. 2. All materials, dimensions & drawings are approximate. 3. Information is subject to change without notice, at developer's absolute discretion. 4. Actual area may vary from the stated area. 5. Drawing are not to scale. 6. All images used are for illustrative purpose only and do not represent the actual size, features, specifications, fittings and furnishings. 7. The developer reserves the right to make revisions/ alterations, at its absolute discretion, without any liability whatsoever.



1 BEDROOM LINK APARTMENT

TYPE A (with powder room + yard)

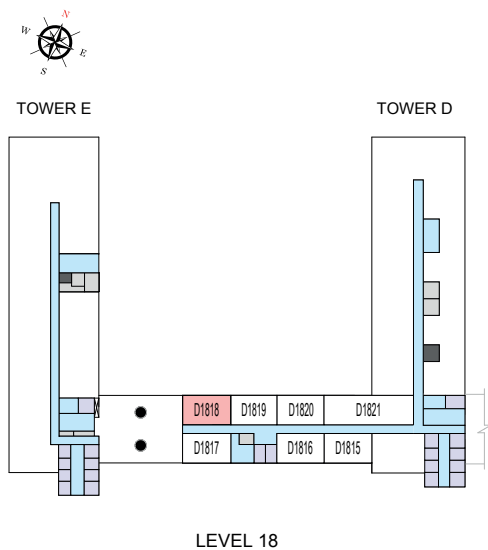
TOTAL SALEABLE AREA

SUITE = 780.49 SQ.FT.

YARD = 148.11 SQ.FT.

TOTAL = 928.60 SQ.FT.

UNIT



List of unit numbers with this unit plan:

VIEWS

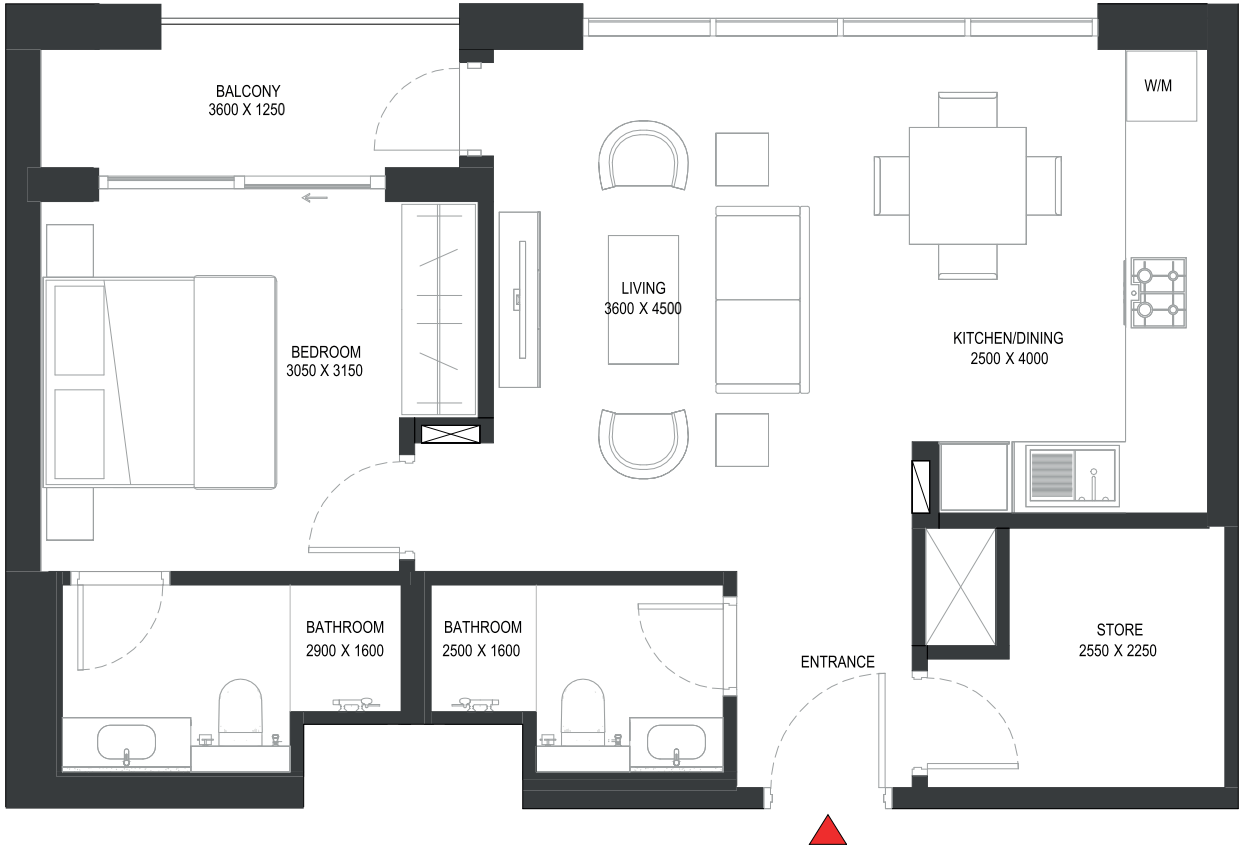
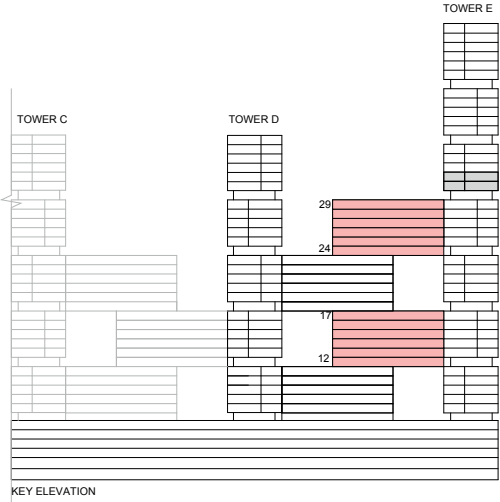
Ras Al Khor, Golf Course, Creek, Amenities  
D1818

Disclaimer: 1. All dimensions are in metric, measured to wall finishes. 2. All materials, dimensions & drawings are approximate. 3. Information is subject to change without notice, at developer's absolute discretion. 4. Actual area may vary from the stated area. 5. Drawing are not to scale. 6. All images used are for illustrative purpose only and do not represent the actual size, features, specifications, fittings and furnishings. 7. The developer reserves the right to make revisions/ alterations, at its absolute discretion, without any liability whatsoever.



1.5 BEDROOM LINK APARTMENT  
TYPE A (with store room + balcony)

TOTAL SALEABLE AREA  
SUITE = 666.39 SQ.FT.  
BALCONY = 58.99 SQ.FT.  
TOTAL = 725.38 SQ.FT.



List of unit numbers with this unit plan:

VIEWS

City  
E1215, E1315, E1415, E1515, E1615, E1715, E2415, E2515, E2615, E2715, E2815, E2915

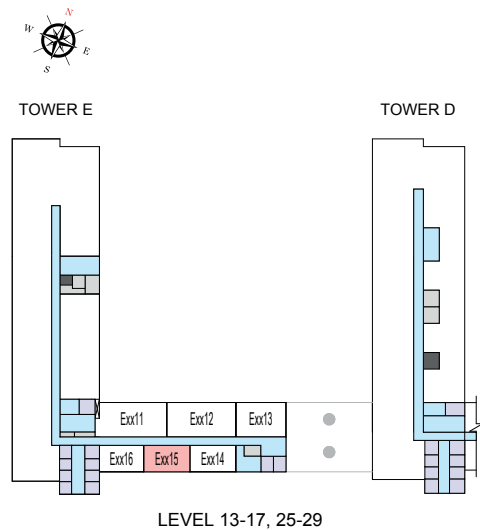
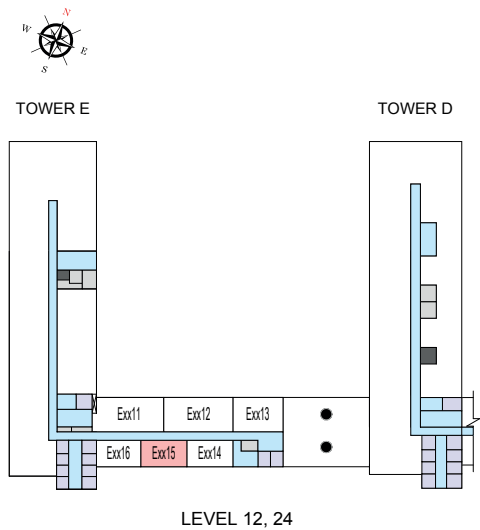
Disclaimer: 1. All dimensions are in metric, measured to wall finishes. 2. All materials, dimensions & drawings are approximate. 3. Information is subject to change without notice, at developer's absolute discretion. 4. Actual area may vary from the stated area. 5. Drawing are not to scale. 6. All images used are for illustrative purpose only and do not represent the actual size, features, specifications, fittings and furnishings. 7. The developer reserves the right to make revisions/ alterations, at its absolute discretion, without any liability whatsoever.



1.5 BEDROOM LINK APARTMENT  
TYPE A (with store room + balcony)

TOTAL SALEABLE AREA  
SUITE = 666.39 SQ.FT.  
BALCONY = 58.99 SQ.FT.  
TOTAL = 725.38 SQ.FT.

UNIT



List of unit numbers with this unit plan:

VIEWS

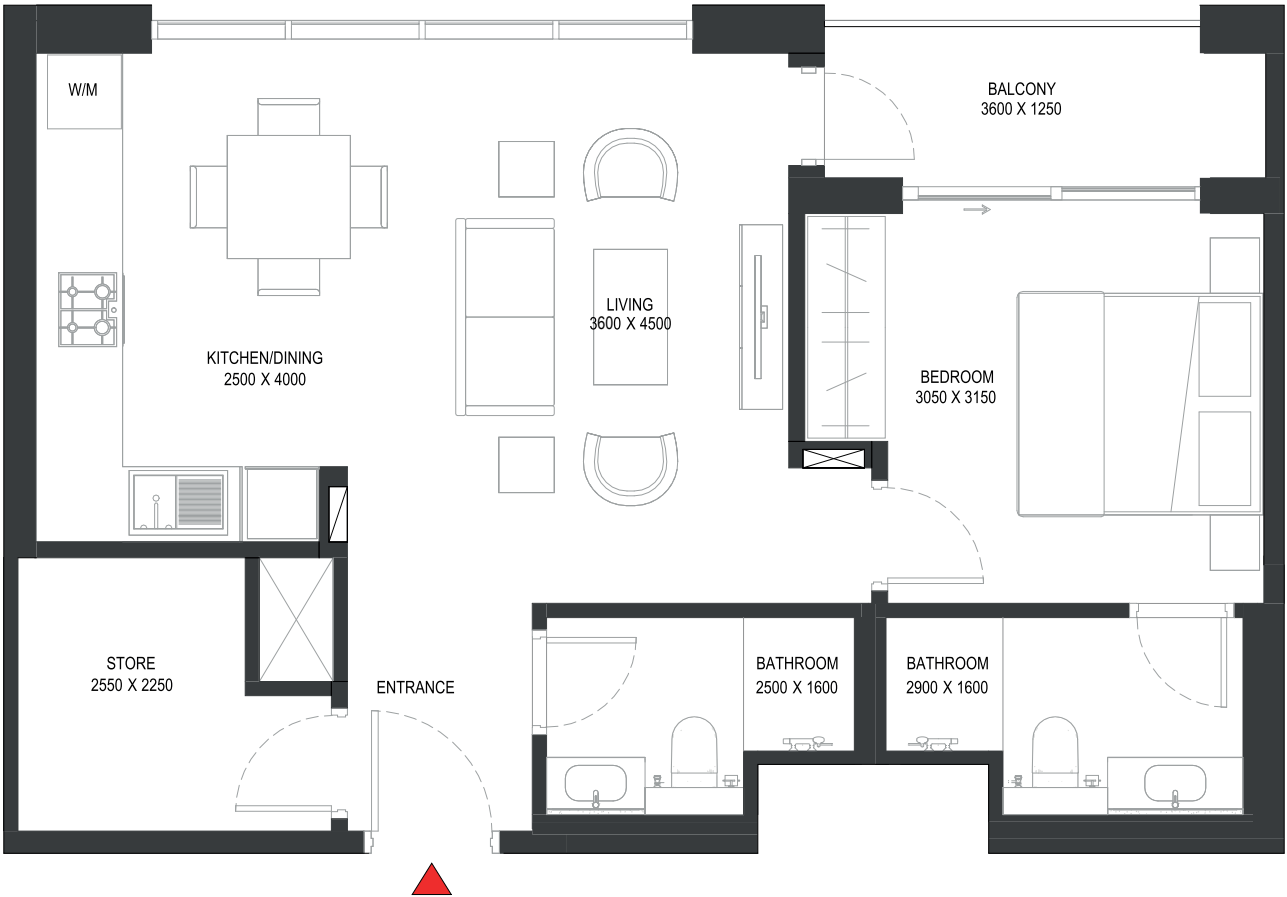
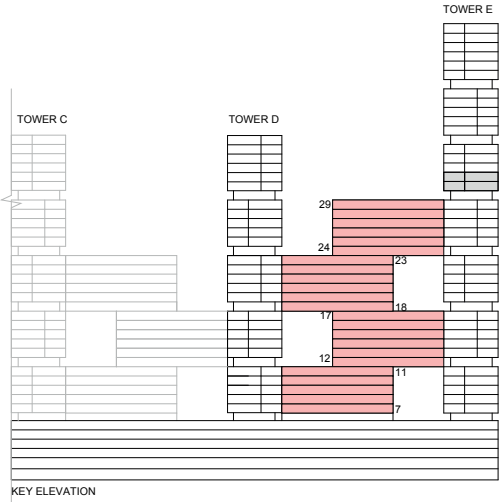
City  
E1215, E1315, E1415, E1515, E1615, E1715, E2415, E2515, E2615, E2715, E2815, E2915

Disclaimer: 1. All dimensions are in metric, measured to wall finishes. 2. All materials, dimensions & drawings are approximate. 3. Information is subject to change without notice, at developer's absolute discretion. 4. Actual area may vary from the stated area. 5. Drawing are not to scale. 6. All images used are for illustrative purpose only and do not represent the actual size, features, specifications, fittings and furnishings. 7. The developer reserves the right to make revisions/ alterations, at its absolute discretion, without any liability whatsoever.



1.5 BEDROOM LINK APARTMENT  
TYPE A (with store room + balcony) VARIANT 1

**TOTAL SALEABLE AREA**  
SUITE RANGE = 666.39 - 669.19 SQ.FT.  
BALCONY RANGE = 58.99 - 59.74 SQ.FT.  
TOTAL RANGE = 725.38 - 728.93 SQ.FT.



List of unit numbers with this unit plan:

VIEWS

City  
D716, D717, D816, D817, D916, D917, D1016, D1017, D1116, D1117, D1816, D1817, D1916, D1917, D2016, D2017, D2116, D2117, D2216, D2217, D2316, D2317, E1214, E1216, E1314, E1316, E1414, E1416, E1514, E1516, E1614, E1616, E1714, E1716, E2414, E2416, E2514, E2516, E2614, E2616, E2714, E2716, E2814, E2816, E2914, E2916

Disclaimer: 1. All dimensions are in metric, measured to wall finishes. 2. All materials, dimensions & drawings are approximate. 3. Information is subject to change without notice, at developer's absolute discretion. 4. Actual area may vary from the stated area. 5. Drawing are not to scale. 6. All images used are for illustrative purpose only and do not represent the actual size, features, specifications, fittings and furnishings. 7. The developer reserves the right to make revisions/ alterations, at its absolute discretion, without any liability whatsoever.



# 1.5 BEDROOM LINK APARTMENT

## TYPE A (with store room + balcony) VARIANT 1

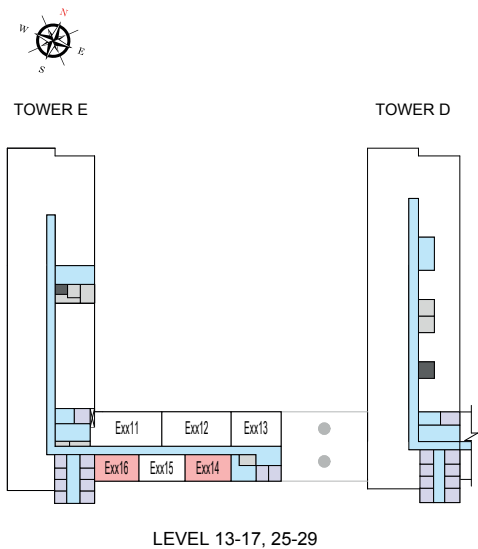
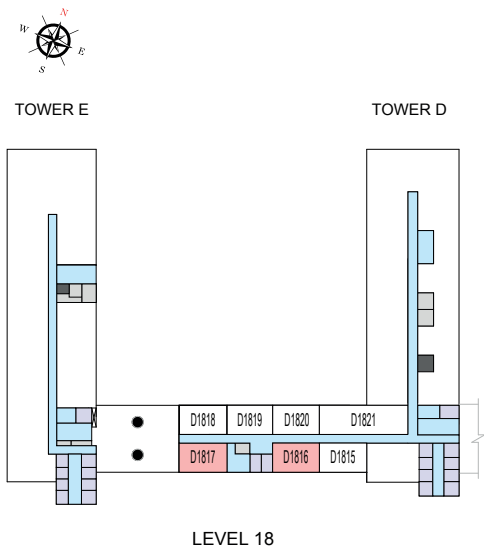
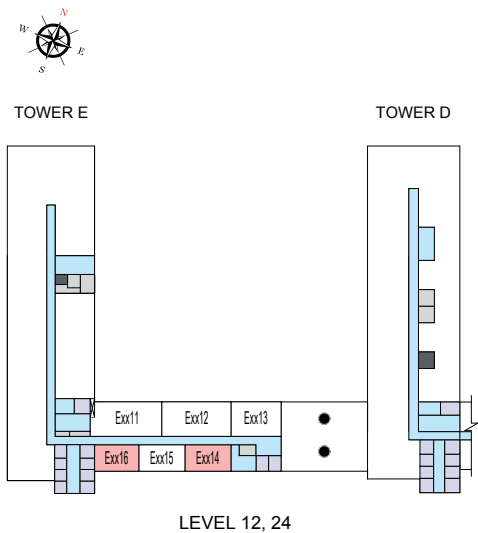
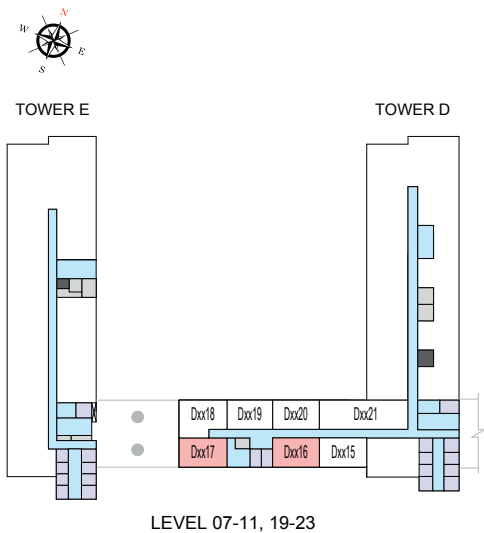
TOTAL SALEABLE AREA

SUITE RANGE = 666.39 - 669.19 SQ.FT.

BALCONY RANGE = 58.99 - 59.74 SQ.FT.

TOTAL RANGE = 725.38 - 728.93 SQ.FT.

UNIT



List of unit numbers with this unit plan:

### VIEWS

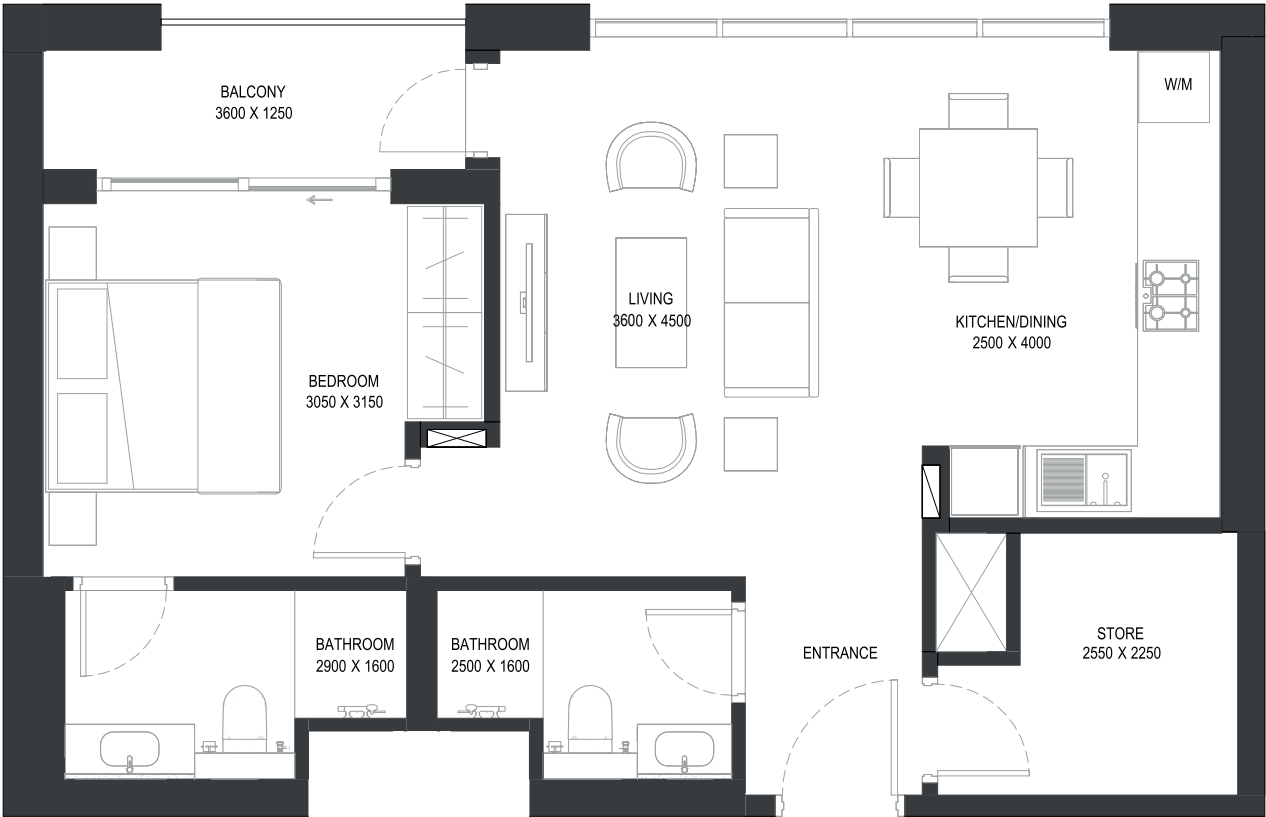
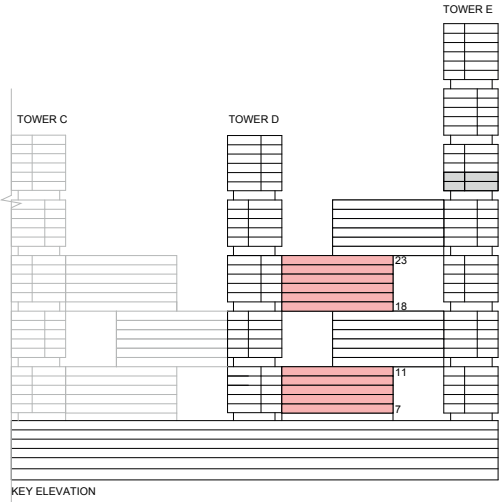
City  
D716, D717, D816, D817, D916, D917, D1016, D1017, D1116, D1117, D1816, D1817, D1916, D1917, D2016, D2017, D2116, D2117, D2216, D2217, D2316, D2317, E1214, E1216, E1314, E1316, E1414, E1416, E1514, E1516, E1614, E1616, E1714, E1716, E2414, E2416, E2514, E2516, E2614, E2616, E2714, E2716, E2814, E2816, E2914, E2916

Disclaimer: 1. All dimensions are in metric, measured to wall finishes. 2. All materials, dimensions & drawings are approximate. 3. Information is subject to change without notice, at developer's absolute discretion. 4. Actual area may vary from the stated area. 5. Drawing are not to scale. 6. All images used are for illustrative purpose only and do not represent the actual size, features, specifications, fittings and furnishings. 7. The developer reserves the right to make revisions/ alterations, at its absolute discretion, without any liability whatsoever.



1.5 BEDROOM LINK APARTMENT  
TYPE A (with store room + balcony) VARIANT 3

TOTAL SALEABLE AREA  
SUITE = 666.39 SQ.FT.  
BALCONY = 58.45 SQ.FT.  
TOTAL = 724.84 SQ.FT.



List of unit numbers with this unit plan:

VIEWS

City  
D715, D815, D915, D1015, D1115, D1815, D1915, D2015, D2115, D2215, D2315

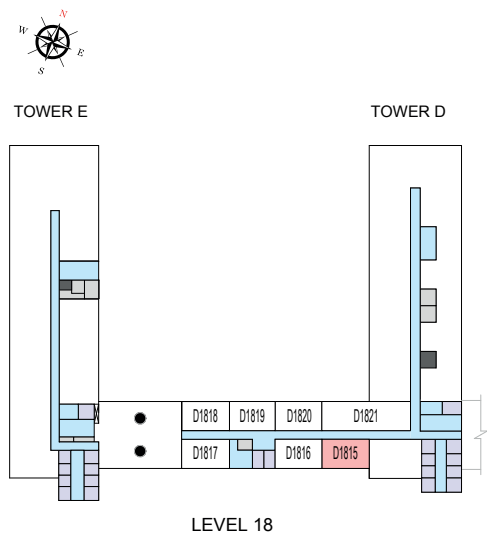
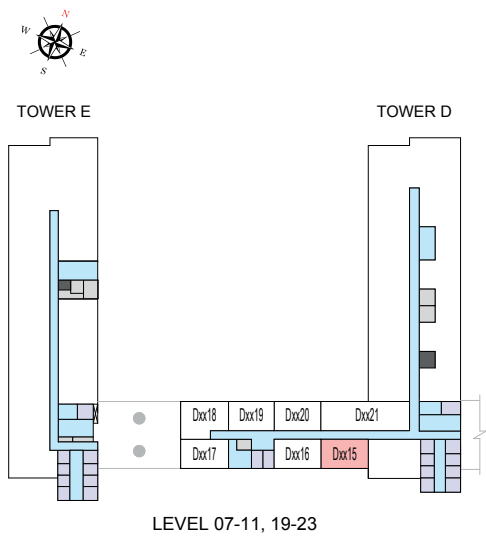
Disclaimer: 1. All dimensions are in metric, measured to wall finishes. 2. All materials, dimensions & drawings are approximate. 3. Information is subject to change without notice, at developer's absolute discretion. 4. Actual area may vary from the stated area. 5. Drawing are not to scale. 6. All images used are for illustrative purpose only and do not represent the actual size, features, specifications, fittings and furnishings. 7. The developer reserves the right to make revisions/ alterations, at its absolute discretion, without any liability whatsoever.



1.5 BEDROOM LINK APARTMENT  
TYPE A (with store room + balcony) VARIANT 3

TOTAL SALEABLE AREA  
SUITE = 666.39 SQ.FT.  
BALCONY = 58.45 SQ.FT.  
TOTAL = 724.84 SQ.FT.

UNIT



List of unit numbers with this unit plan:

VIEWS

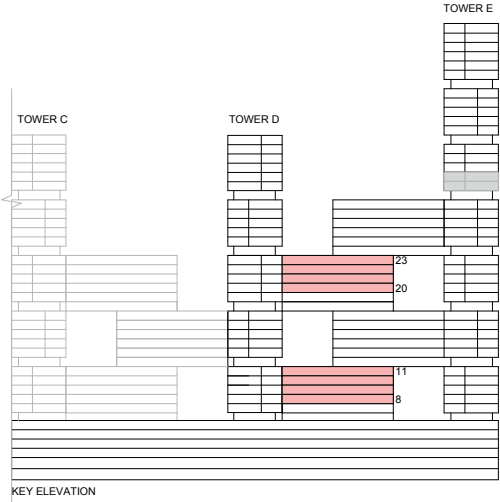
City  
D715, D815, D915, D1015, D1115, D1815, D1915, D2015, D2115, D2215, D2315

Disclaimer: 1. All dimensions are in metric, measured to wall finishes. 2. All materials, dimensions & drawings are approximate. 3. Information is subject to change without notice, at developer's absolute discretion. 4. Actual area may vary from the stated area. 5. Drawing are not to scale. 6. All images used are for illustrative purpose only and do not represent the actual size, features, specifications, fittings and furnishings. 7. The developer reserves the right to make revisions/ alterations, at its absolute discretion, without any liability whatsoever.



2 BEDROOM LINK APARTMENT  
TYPE A (with powder room + balcony) VARIANT 1

TOTAL SALEABLE AREA  
SUITE = 915.79 SQ.FT.  
BALCONY = 54.79 SQ.FT.  
TOTAL = 970.58 SQ.FT.



List of unit numbers with this unit plan:

VIEWS

Ras Al Khor, Creek, Amenities  
D818, D918

Ras Al Khor, Golf Course, Creek, Amenitiest  
D1018, D1118, D2018, D2118, D2218, D2318

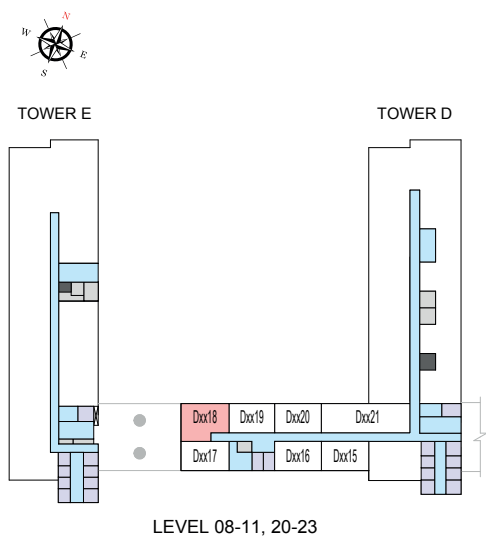
Disclaimer: 1. All dimensions are in metric, measured to wall finishes. 2. All materials, dimensions & drawings are approximate. 3. Information is subject to change without notice, at developer's absolute discretion. 4. Actual area may vary from the stated area. 5. Drawing are not to scale. 6. All images used are for illustrative purpose only and do not represent the actual size, features, specifications, fittings and furnishings. 7. The developer reserves the right to make revisions/ alterations, at its absolute discretion, without any liability whatsoever.



2 BEDROOM LINK APARTMENT  
TYPE A (with powder room + balcony) VARIANT 1

TOTAL SALEABLE AREA  
SUITE = 915.79 SQ.FT.  
BALCONY = 54.79 SQ.FT.  
TOTAL = 970.58 SQ.FT.

UNIT



List of unit numbers with this unit plan:

VIEWS

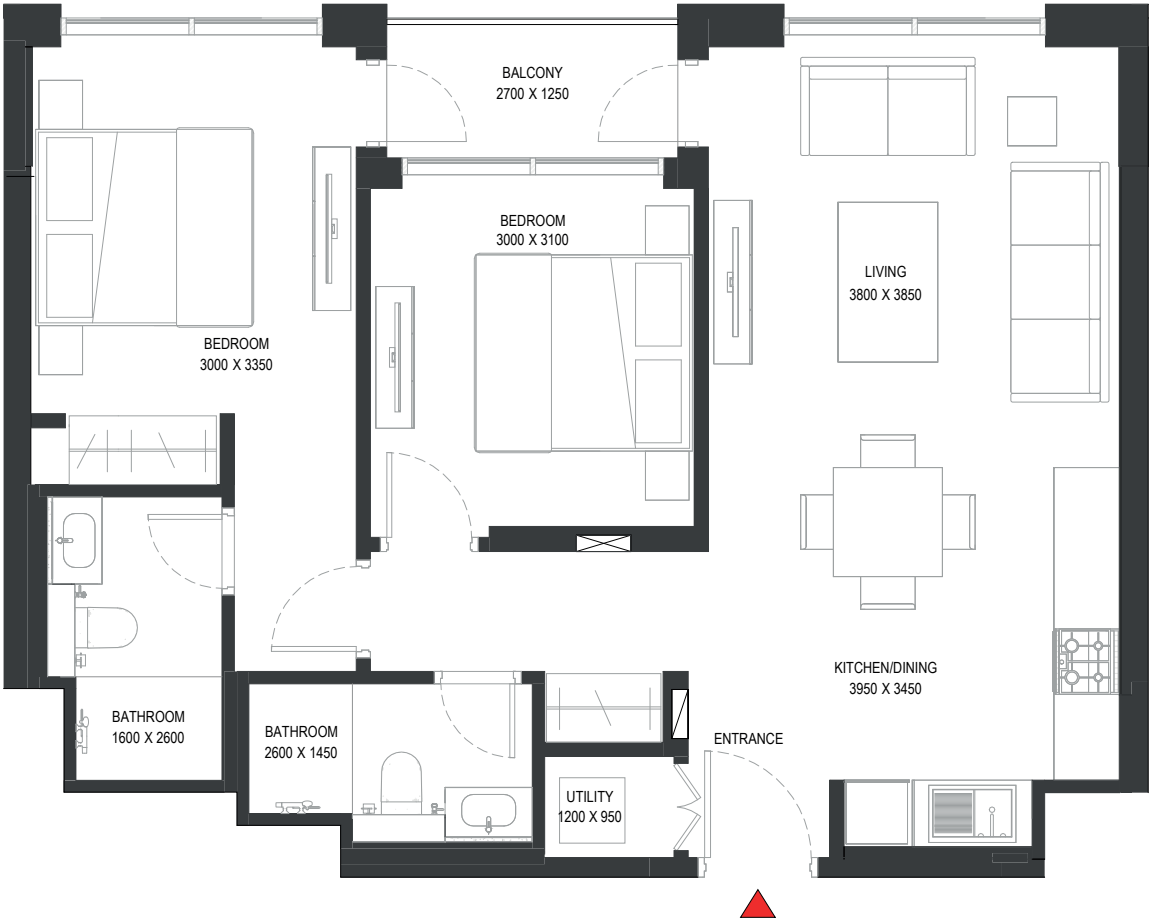
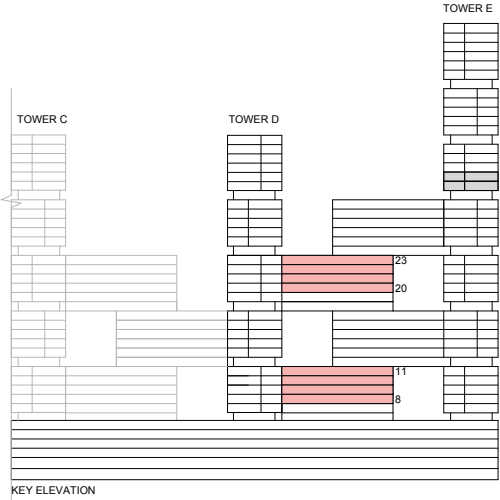
Ras Al Khor, Creek, Amenities  
D818, D918

Ras Al Khor, Golf Course, Creek, Amenitiest  
D1018, D1118, D2018, D2118, D2218, D2318

Disclaimer: 1. All dimensions are in metric, measured to wall finishes. 2. All materials, dimensions & drawings are approximate. 3. Information is subject to change without notice, at developer's absolute discretion. 4. Actual area may vary from the stated area. 5. Drawing are not to scale. 6. All images used are for illustrative purpose only and do not represent the actual size, features, specifications, fittings and furnishings. 7. The developer reserves the right to make revisions/ alterations, at its absolute discretion, without any liability whatsoever.

2 BEDROOM LINK APARTMENT  
TYPE B (with balcony)

TOTAL SALEABLE AREA  
SUITE = 803.31 SQ.FT.  
BALCONY = 44.13 SQ.FT.  
TOTAL = 847.44 SQ.FT.



List of unit numbers with this unit plan:

VIEWS

Ras Al Khor, Amenities  
D820, D920

Ras Al Khor, Golf Course, Amenities  
D1020, D1120, D2020, D2120, D2220, D2320

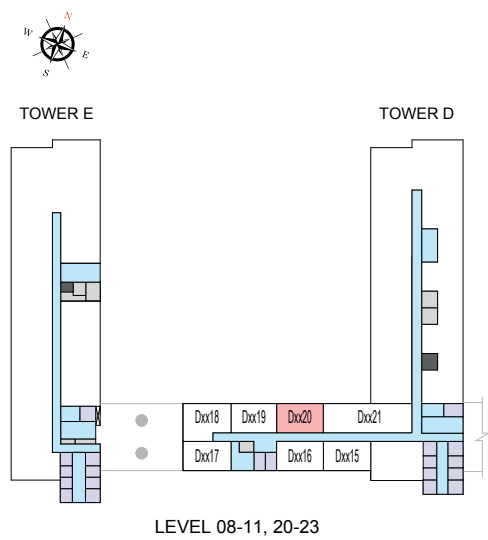
Disclaimer: 1. All dimensions are in metric, measured to wall finishes. 2. All materials, dimensions & drawings are approximate. 3. Information is subject to change without notice, at developer's absolute discretion. 4. Actual area may vary from the stated area. 5. Drawing are not to scale. 6. All images used are for illustrative purpose only and do not represent the actual size, features, specifications, fittings and furnishings. 7. The developer reserves the right to make revisions/ alterations, at its absolute discretion, without any liability whatsoever.



2 BEDROOM LINK APARTMENT  
TYPE B (with balcony)

TOTAL SALEABLE AREA  
SUITE = 803.31 SQ.FT.  
BALCONY = 44.13 SQ.FT.  
TOTAL = 847.44 SQ.FT.

UNIT



List of unit numbers with this unit plan:

VIEWS

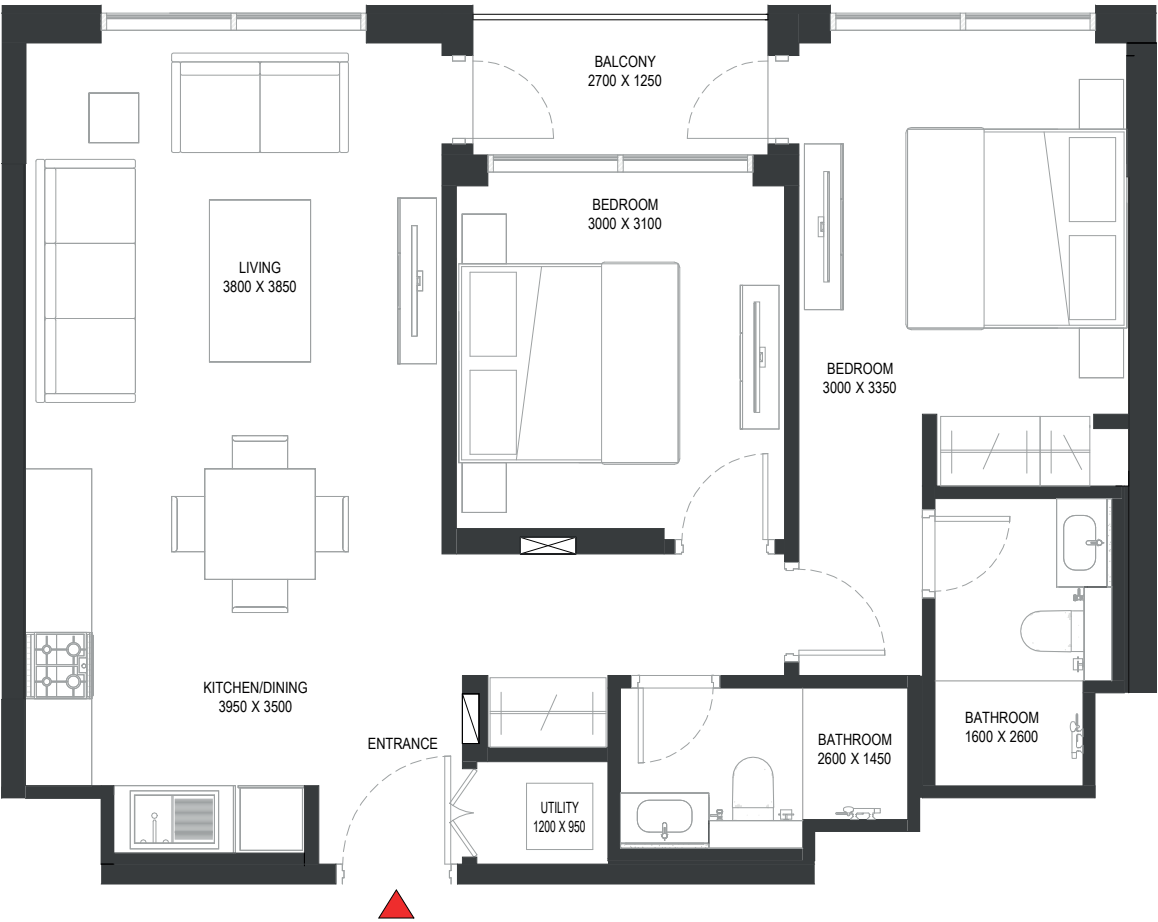
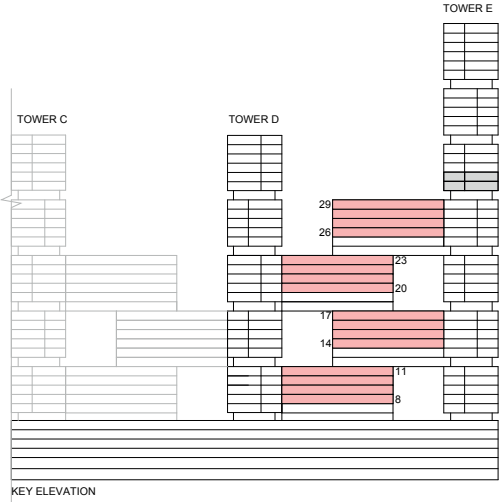
- Ras Al Khor, Amenities  
D820, D920
- Ras Al Khor, Golf Course, Amenities  
D1020, D1120, D2020, D2120, D2220, D2320

Disclaimer: 1. All dimensions are in metric, measured to wall finishes. 2. All materials, dimensions & drawings are approximate. 3. Information is subject to change without notice, at developer's absolute discretion. 4. Actual area may vary from the stated area. 5. Drawing are not to scale. 6. All images used are for illustrative purpose only and do not represent the actual size, features, specifications, fittings and furnishings. 7. The developer reserves the right to make revisions/ alterations, at its absolute discretion, without any liability whatsoever.

# 2 BEDROOM LINK APARTMENT

## TYPE B (with balcony) VARIANT 1

**TOTAL SALEABLE AREA**  
 SUITE = 803.31 SQ.FT.  
 BALCONY = 44.13 SQ.FT.  
 TOTAL = 847.44 SQ.FT.



List of unit numbers with this unit plan:

### VIEWS

- Ras Al Khor, Creek, Amenities  
D819, D919
- Ras Al Khor, Golf Course, Creek, Amenities  
D1019, D1119, D2019, D2119, D2219, D2319, E1413, E1513, E1613, E1713
- Ras Al Khor, Golf Course, Creek  
E2613, E2713, E2813, E2913

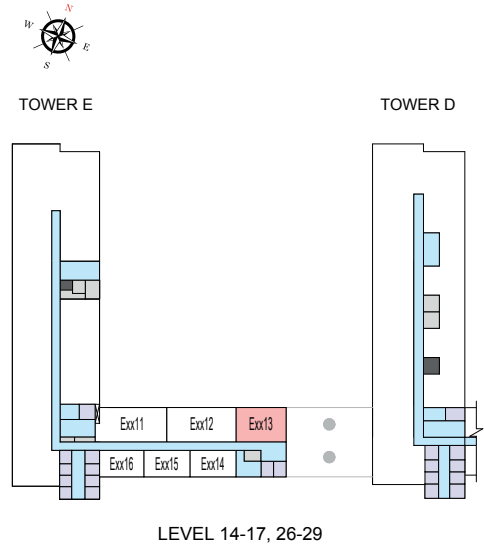
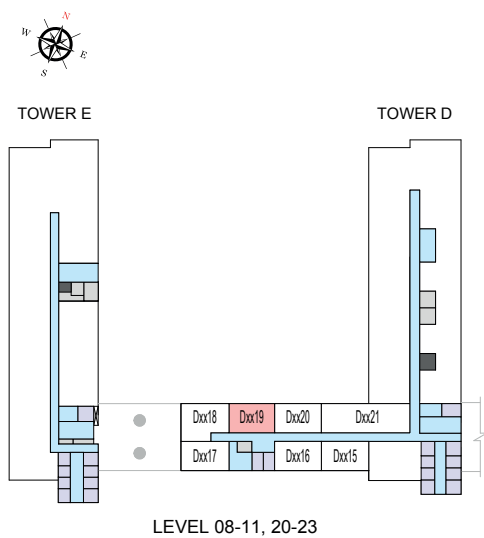
Disclaimer: 1. All dimensions are in metric, measured to wall finishes. 2. All materials, dimensions & drawings are approximate. 3. Information is subject to change without notice, at developer's absolute discretion. 4. Actual area may vary from the stated area. 5. Drawing are not to scale. 6. All images used are for illustrative purpose only and do not represent the actual size, features, specifications, fittings and furnishings. 7. The developer reserves the right to make revisions/ alterations, at its absolute discretion, without any liability whatsoever.



2 BEDROOM LINK APARTMENT  
TYPE B (with balcony) VARIANT 1

TOTAL SALEABLE AREA  
SUITE = 803.31 SQ.FT.  
BALCONY = 44.13 SQ.FT.  
TOTAL = 847.44 SQ.FT.

UNIT



List of unit numbers with this unit plan:

VIEWS

- Ras Al Khor, Creek, Amenities  
D819, D919
- Ras Al Khor, Golf Course, Creek, Amenities  
D1019, D1119, D2019, D2119, D2219, D2319, E1413, E1513, E1613, E1713
- Ras Al Khor, Golf Course, Creek  
E2613, E2713, E2813, E2913

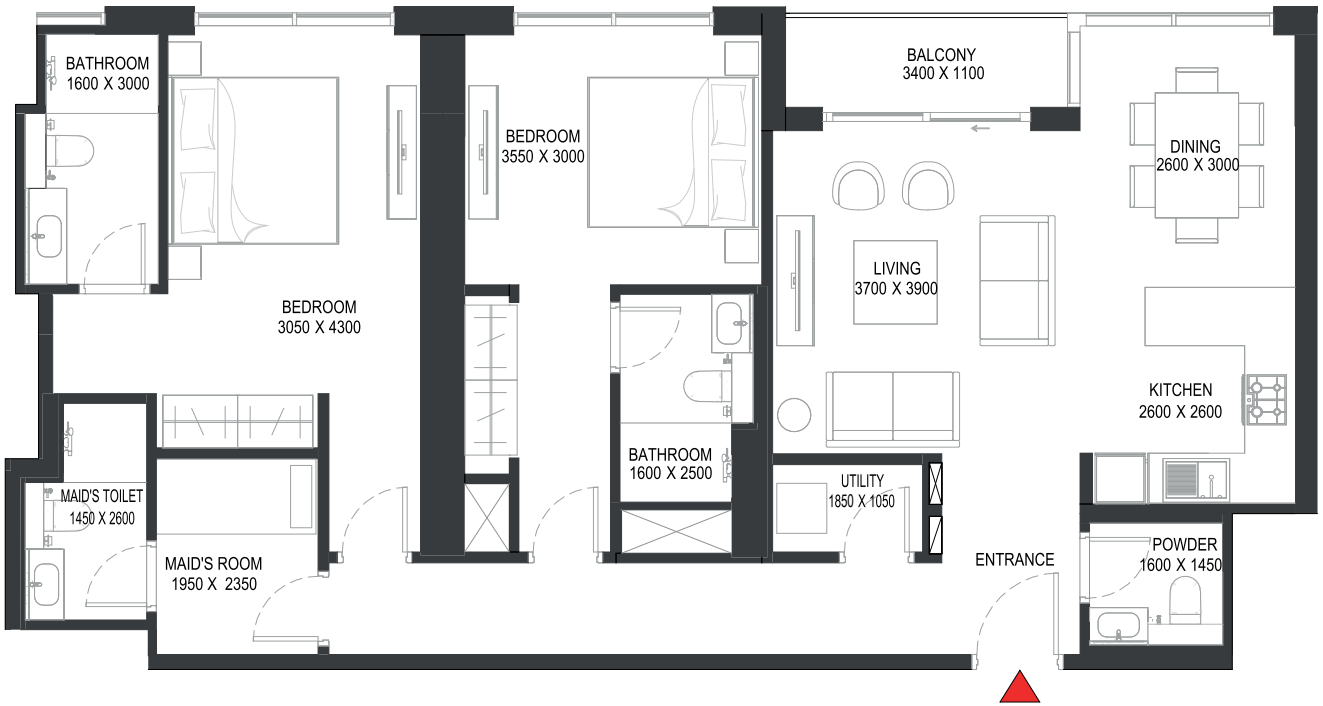
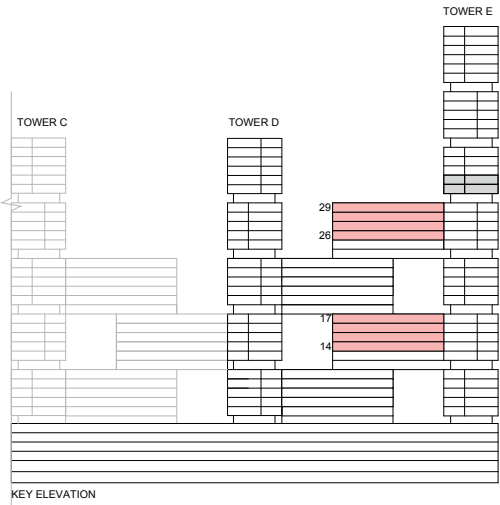
Disclaimer: 1. All dimensions are in metric, measured to wall finishes. 2. All materials, dimensions & drawings are approximate. 3. Information is subject to change without notice, at developer's absolute discretion. 4. Actual area may vary from the stated area. 5. Drawing are not to scale. 6. All images used are for illustrative purpose only and do not represent the actual size, features, specifications, fittings and furnishings. 7. The developer reserves the right to make revisions/ alterations, at its absolute discretion, without any liability whatsoever.

# 2 BEDROOM LINK APARTMENT

TYPE D (with maid room, powder room + balcony) VARIANT 1

## TOTAL SALEABLE AREA

SUITE = 1,204.91 SQ.FT.  
BALCONY = 47.47 SQ.FT.  
TOTAL = 1,252.38 SQ.FT.



List of unit numbers with this unit plan:

### VIEWS

Ras Al Khor, Golf Course, Creek, Amenities  
E1412, E1512, E1612, E1712

Ras Al Khor, Golf Course, Creek  
E2612, E2712, E2812, E2912

Disclaimer: 1. All dimensions are in metric, measured to wall finishes. 2. All materials, dimensions & drawings are approximate. 3. Information is subject to change without notice, at developer's absolute discretion. 4. Actual area may vary from the stated area. 5. Drawing are not to scale. 6. All images used are for illustrative purpose only and do not represent the actual size, features, specifications, fittings and furnishings. 7. The developer reserves the right to make revisions/ alterations, at its absolute discretion, without any liability whatsoever.



2 BEDROOM LINK APARTMENT

TYPE D (with maid room, powder room + balcony) VARIANT 1

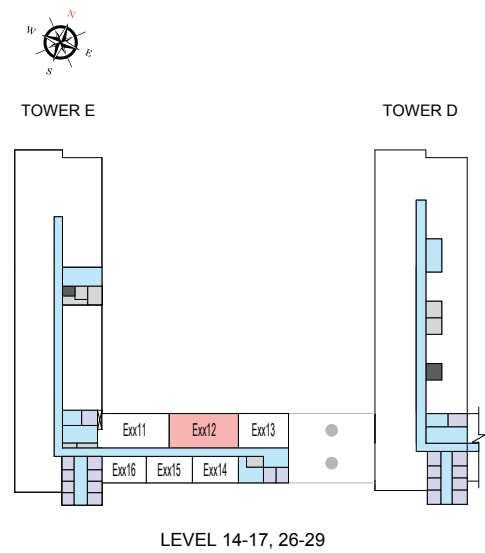
TOTAL SALEABLE AREA

SUITE = 1,204.91 SQ.FT.

BALCONY = 47.47 SQ.FT.

TOTAL = 1,252.38 SQ.FT.

UNIT



List of unit numbers with this unit plan:

VIEWS

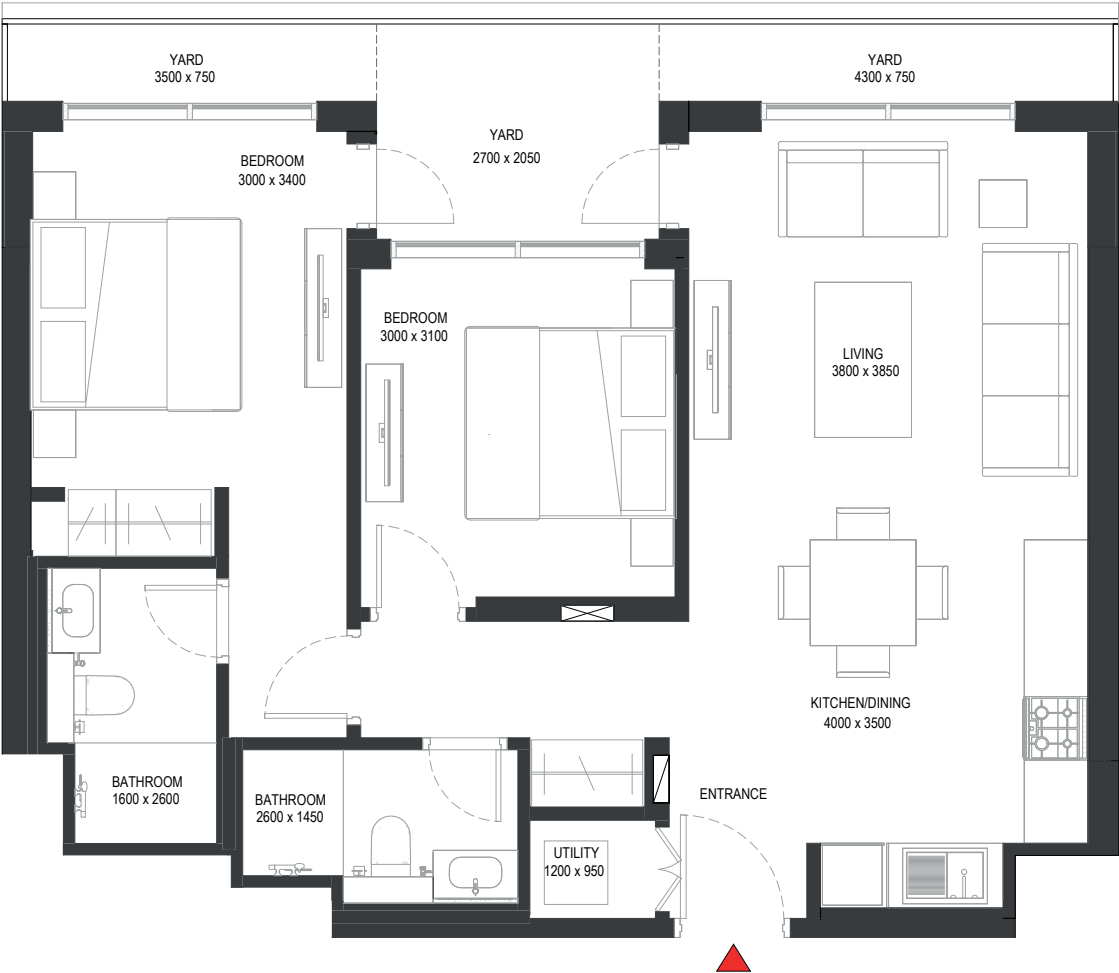
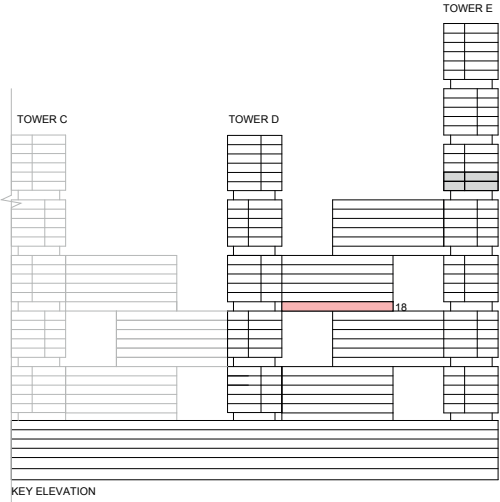
Ras Al Khor, Golf Course, Creek, Amenities  
E1412, E1512, E1612, E1712

Ras Al Khor, Golf Course, Creek  
E2612, E2712, E2812, E2912

Disclaimer: 1. All dimensions are in metric, measured to wall finishes. 2. All materials, dimensions & drawings are approximate. 3. Information is subject to change without notice, at developer's absolute discretion. 4. Actual area may vary from the stated area. 5. Drawing are not to scale. 6. All images used are for illustrative purpose only and do not represent the actual size, features, specifications, fittings and furnishings. 7. The developer reserves the right to make revisions/ alterations, at its absolute discretion, without any liability whatsoever.

2 BEDROOM LINK APARTMENT  
TYPE F (with yard)

TOTAL SALEABLE AREA  
SUITE = 803.31 SQ.FT.  
YARD = 138.10 SQ.FT.  
TOTAL = 941.41 SQ.FT.



List of unit numbers with this unit plan:

VIEWS

Ras Al Khor, Golf Course, Amenities  
D1820

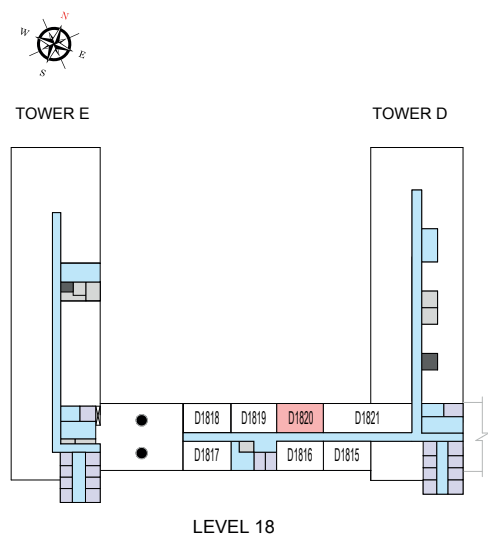
Disclaimer: 1. All dimensions are in metric, measured to wall finishes. 2. All materials, dimensions & drawings are approximate. 3. Information is subject to change without notice, at developer's absolute discretion. 4. Actual area may vary from the stated area. 5. Drawing are not to scale. 6. All images used are for illustrative purpose only and do not represent the actual size, features, specifications, fittings and furnishings. 7. The developer reserves the right to make revisions/ alterations, at its absolute discretion, without any liability whatsoever.



2 BEDROOM LINK APARTMENT  
TYPE F (with yard)

TOTAL SALEABLE AREA  
SUITE = 803.31 SQ.FT.  
YARD = 138.10 SQ.FT.  
TOTAL = 941.41 SQ.FT.

UNIT



List of unit numbers with this unit plan:

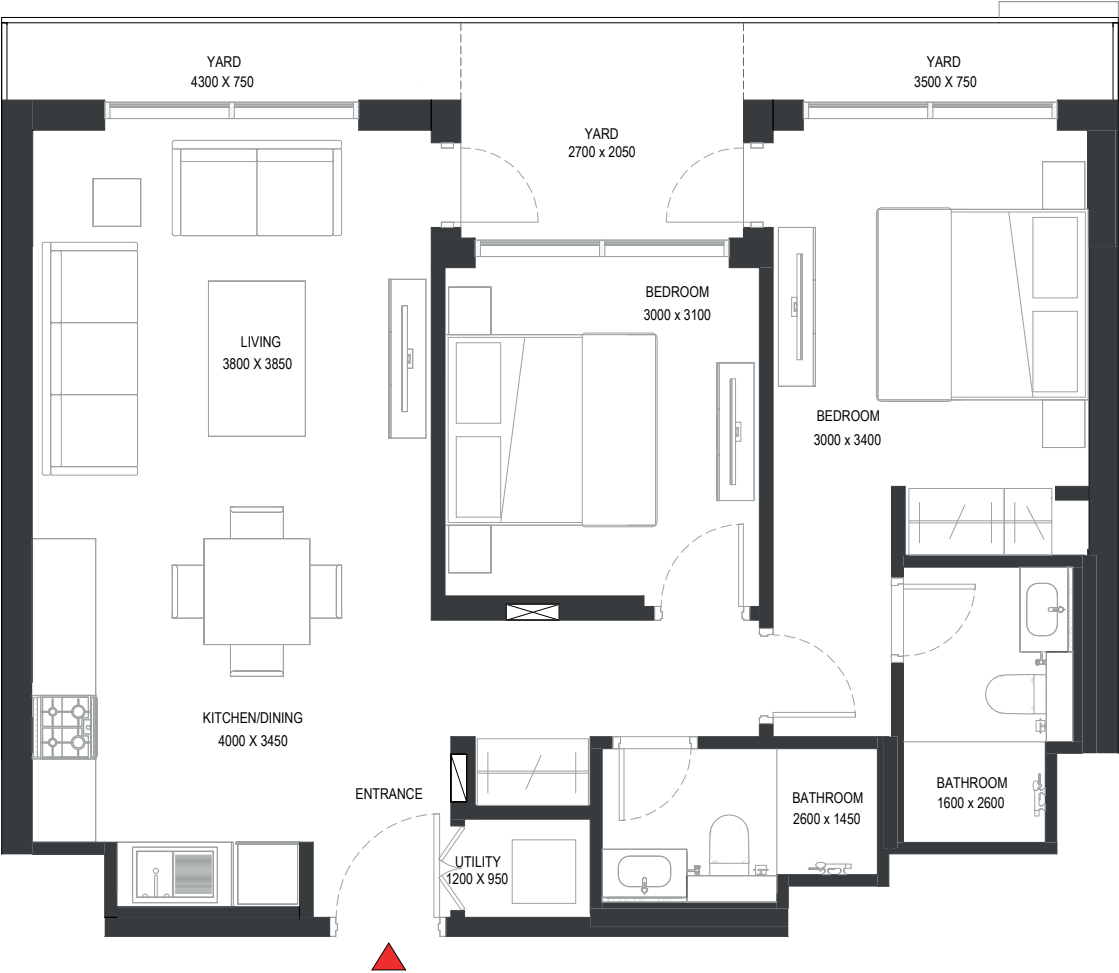
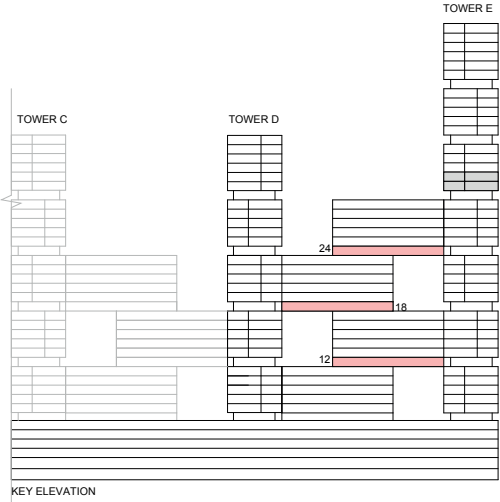
VIEWS

Ras Al Khor, Golf Course, Amenities  
D1820

Disclaimer: 1. All dimensions are in metric, measured to wall finishes. 2. All materials, dimensions & drawings are approximate. 3. Information is subject to change without notice, at developer's absolute discretion. 4. Actual area may vary from the stated area. 5. Drawing are not to scale. 6. All images used are for illustrative purpose only and do not represent the actual size, features, specifications, fittings and furnishings. 7. The developer reserves the right to make revisions/ alterations, at its absolute discretion, without any liability whatsoever.

2 BEDROOM LINK APARTMENT  
TYPE F (with yard) VARIANT 1

TOTAL SALEABLE AREA  
SUITE = 803.31 SQ.FT.  
YARD = 138.10 SQ.FT.  
TOTAL = 941.41 SQ.FT.



List of unit numbers with this unit plan:

VIEWS

Ras Al Khor, Golf Course, Creek, Amenities  
D1819, E1213, E2413

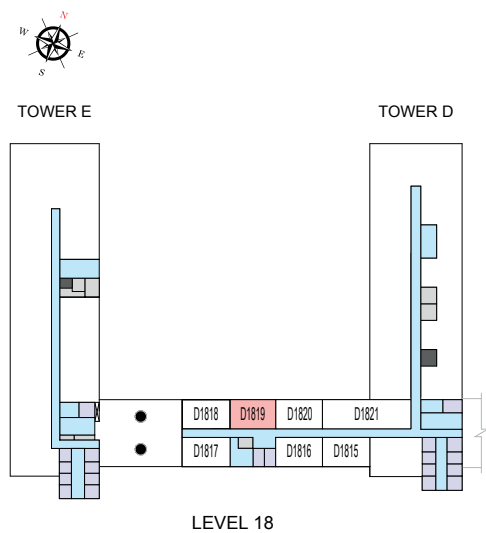
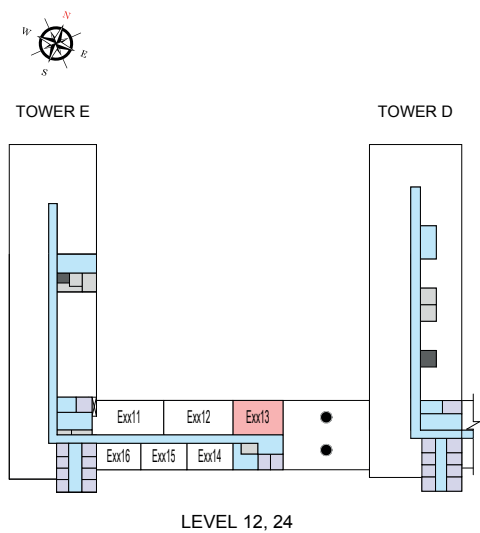
Disclaimer: 1. All dimensions are in metric, measured to wall finishes. 2. All materials, dimensions & drawings are approximate. 3. Information is subject to change without notice, at developer's absolute discretion. 4. Actual area may vary from the stated area. 5. Drawing are not to scale. 6. All images used are for illustrative purpose only and do not represent the actual size, features, specifications, fittings and furnishings. 7. The developer reserves the right to make revisions/ alterations, at its absolute discretion, without any liability whatsoever.



2 BEDROOM LINK APARTMENT  
TYPE F (with yard) VARIANT 1

TOTAL SALEABLE AREA  
SUITE = 803.31 SQ.FT.  
YARD = 138.10 SQ.FT.  
TOTAL = 941.41 SQ.FT.

UNIT



List of unit numbers with this unit plan:

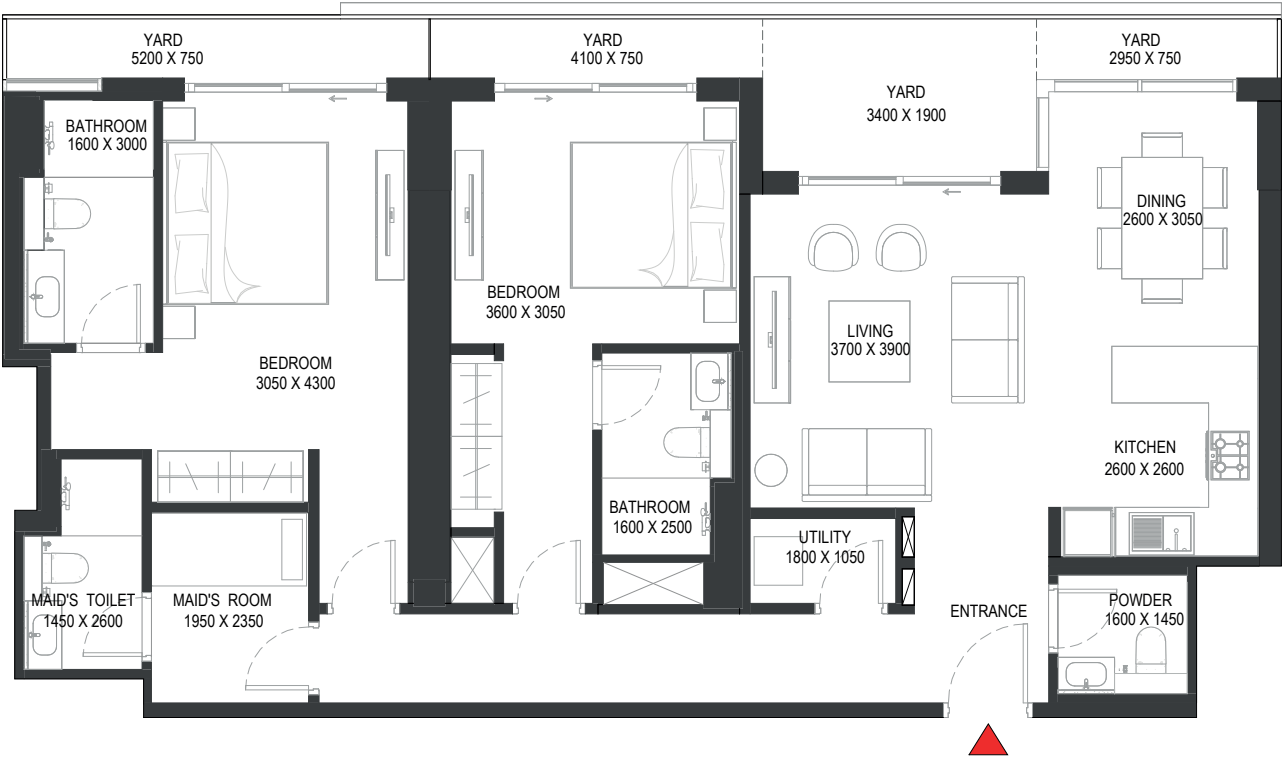
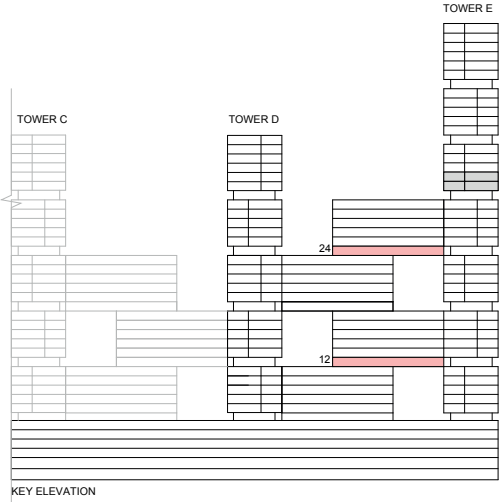
VIEWS

Ras Al Khor, Golf Course, Creek, Amenities  
D1819, E1213, E2413

Disclaimer: 1. All dimensions are in metric, measured to wall finishes. 2. All materials, dimensions & drawings are approximate. 3. Information is subject to change without notice, at developer's absolute discretion. 4. Actual area may vary from the stated area. 5. Drawing are not to scale. 6. All images used are for illustrative purpose only and do not represent the actual size, features, specifications, fittings and furnishings. 7. The developer reserves the right to make revisions/ alterations, at its absolute discretion, without any liability whatsoever.

2 BEDROOM LINK APARTMENT  
TYPE H (with maid room, powder room + yard) VARIANT 1

TOTAL SALEABLE AREA  
SUITE = 1,204.91 SQ.FT.  
YARD = 187.94 SQ.FT.  
TOTAL = 1,392.85 SQ.FT.



List of unit numbers with this unit plan:

VIEWS

Ras Al Khor, Golf Course, Creek, Amenities  
E1212, E2412

Disclaimer: 1. All dimensions are in metric, measured to wall finishes. 2. All materials, dimensions & drawings are approximate. 3. Information is subject to change without notice, at developer's absolute discretion. 4. Actual area may vary from the stated area. 5. Drawing are not to scale. 6. All images used are for illustrative purpose only and do not represent the actual size, features, specifications, fittings and furnishings. 7. The developer reserves the right to make revisions/ alterations, at its absolute discretion, without any liability whatsoever.



2 BEDROOM LINK APARTMENT

TYPE H (with maid room, powder room + yard) VARIANT 1

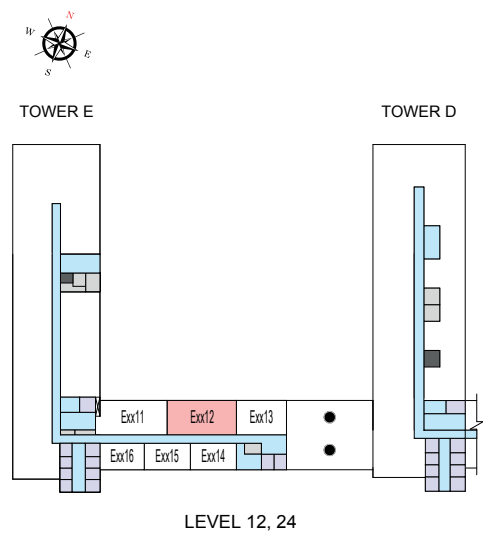
TOTAL SALEABLE AREA

SUITE = 1,204.91 SQ.FT.

YARD = 187.94 SQ.FT.

TOTAL = 1,392.85 SQ.FT.

UNIT



List of unit numbers with this unit plan:

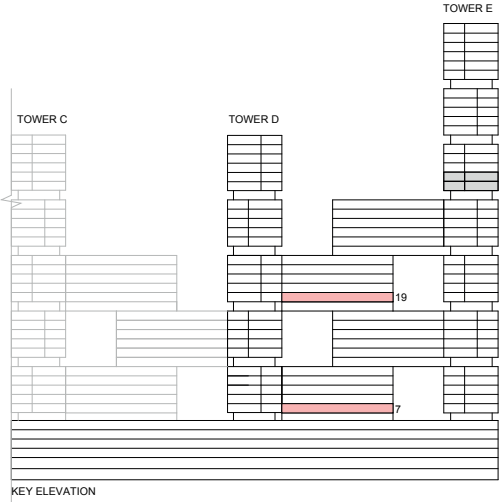
VIEWS

Ras Al Khor, Golf Course, Creek, Amenities  
E1212, E2412

Disclaimer: 1. All dimensions are in metric, measured to wall finishes. 2. All materials, dimensions & drawings are approximate. 3. Information is subject to change without notice, at developer's absolute discretion. 4. Actual area may vary from the stated area. 5. Drawing are not to scale. 6. All images used are for illustrative purpose only and do not represent the actual size, features, specifications, fittings and furnishings. 7. The developer reserves the right to make revisions/ alterations, at its absolute discretion, without any liability whatsoever.

2 BEDROOM LINK APARTMENT  
TYPE J (with powder room + yard) VARIANT 1

TOTAL SALEABLE AREA  
SUITE = 915.79 SQ.FT.  
YARD = 149.83 SQ.FT.  
TOTAL = 1,065.62 SQ.FT.



List of unit numbers with this unit plan:

VIEWS

Ras Al Khor, Creek, Amenities  
D718

Ras Al Khor, Golf Course, Creek, Amenities  
D1918

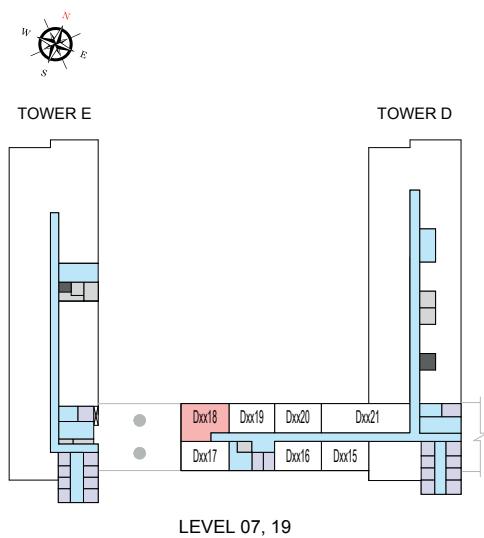
Disclaimer: 1. All dimensions are in metric, measured to wall finishes. 2. All materials, dimensions & drawings are approximate. 3. Information is subject to change without notice, at developer's absolute discretion. 4. Actual area may vary from the stated area. 5. Drawing are not to scale. 6. All images used are for illustrative purpose only and do not represent the actual size, features, specifications, fittings and furnishings. 7. The developer reserves the right to make revisions/ alterations, at its absolute discretion, without any liability whatsoever.



2 BEDROOM LINK APARTMENT  
TYPE J (with powder room + yard) VARIANT 1

TOTAL SALEABLE AREA  
SUITE = 915.79 SQ.FT.  
YARD = 149.83 SQ.FT.  
TOTAL = 1,065.62 SQ.FT.

UNIT



List of unit numbers with this unit plan:

VIEWS

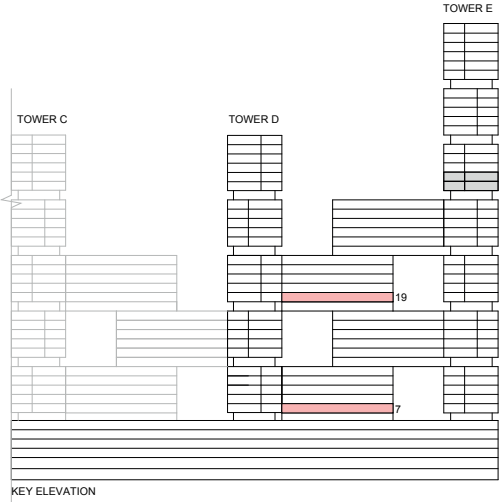
Ras Al Khor, Creek, Amenities  
D718

Ras Al Khor, Golf Course, Creek, Amenities  
D1918

Disclaimer: 1. All dimensions are in metric, measured to wall finishes. 2. All materials, dimensions & drawings are approximate. 3. Information is subject to change without notice, at developer's absolute discretion. 4. Actual area may vary from the stated area. 5. Drawing are not to scale. 6. All images used are for illustrative purpose only and do not represent the actual size, features, specifications, fittings and furnishings. 7. The developer reserves the right to make revisions/ alterations, at its absolute discretion, without any liability whatsoever.

2 BEDROOM LINK APARTMENT  
TYPE K (with yard)

TOTAL SALEABLE AREA  
SUITE = 803.31 SQ.FT.  
YARD = 138.10 SQ.FT.  
TOTAL = 941.41 SQ.FT.



List of unit numbers with this unit plan:

VIEWS

- Ras Al Khor, Amenities  
D720
- Ras Al Khor, Golf Course, Amenities  
D1920

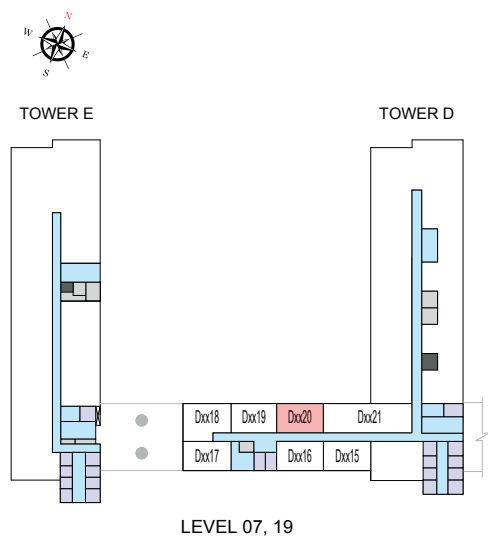
Disclaimer: 1. All dimensions are in metric, measured to wall finishes. 2. All materials, dimensions & drawings are approximate. 3. Information is subject to change without notice, at developer's absolute discretion. 4. Actual area may vary from the stated area. 5. Drawing are not to scale. 6. All images used are for illustrative purpose only and do not represent the actual size, features, specifications, fittings and furnishings. 7. The developer reserves the right to make revisions/ alterations, at its absolute discretion, without any liability whatsoever.



2 BEDROOM LINK APARTMENT  
TYPE K (with yard)

TOTAL SALEABLE AREA  
SUITE = 803.31 SQ.FT.  
YARD = 138.10 SQ.FT.  
TOTAL = 941.41 SQ.FT.

UNIT



List of unit numbers with this unit plan:

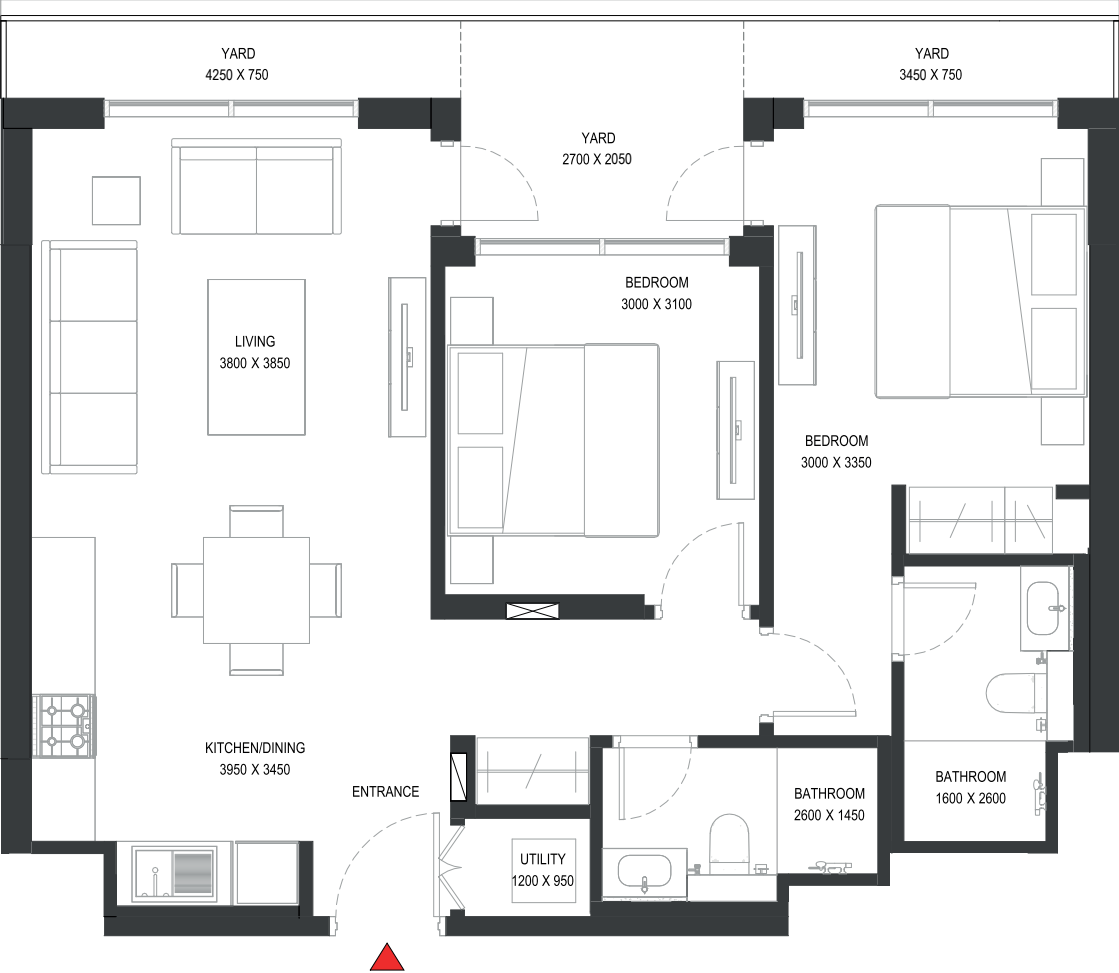
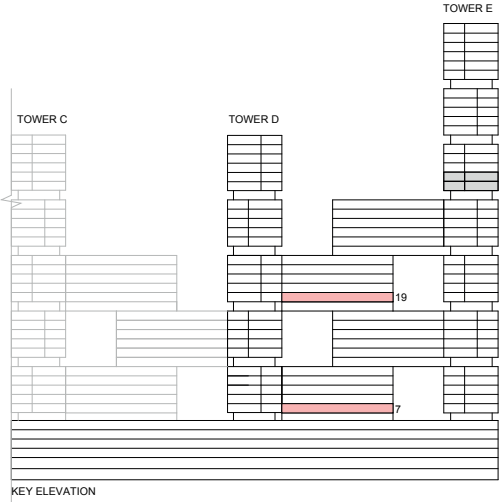
VIEWS

- Ras Al Khor, Amenities  
D720
- Ras Al Khor, Golf Course, Amenities  
D1920

Disclaimer: 1. All dimensions are in metric, measured to wall finishes. 2. All materials, dimensions & drawings are approximate. 3. Information is subject to change without notice, at developer's absolute discretion. 4. Actual area may vary from the stated area. 5. Drawing are not to scale. 6. All images used are for illustrative purpose only and do not represent the actual size, features, specifications, fittings and furnishings. 7. The developer reserves the right to make revisions/ alterations, at its absolute discretion, without any liability whatsoever.

2 BEDROOM LINK APARTMENT  
TYPE K (with yard) VARIANT 1

TOTAL SALEABLE AREA  
SUITE = 803.31 SQ.FT.  
YARD = 138.10 SQ.FT.  
TOTAL = 941.41 SQ.FT.



List of unit numbers with this unit plan:

VIEWS

Ras Al Khor, Creek, Amenities  
D719

Ras Al Khor, Golf Course, Creek, Amenities  
D1919

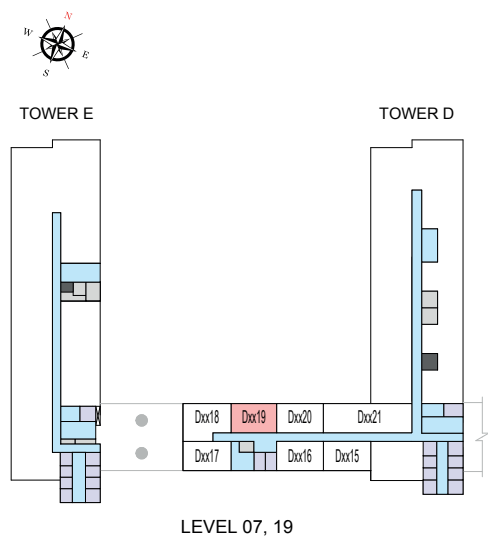
Disclaimer: 1. All dimensions are in metric, measured to wall finishes. 2. All materials, dimensions & drawings are approximate. 3. Information is subject to change without notice, at developer's absolute discretion. 4. Actual area may vary from the stated area. 5. Drawing are not to scale. 6. All images used are for illustrative purpose only and do not represent the actual size, features, specifications, fittings and furnishings. 7. The developer reserves the right to make revisions/ alterations, at its absolute discretion, without any liability whatsoever.



2 BEDROOM LINK APARTMENT  
TYPE K (with yard) VARIANT 1

TOTAL SALEABLE AREA  
SUITE = 803.31 SQ.FT.  
YARD = 138.10 SQ.FT.  
TOTAL = 941.41 SQ.FT.

UNIT



List of unit numbers with this unit plan:

VIEWS

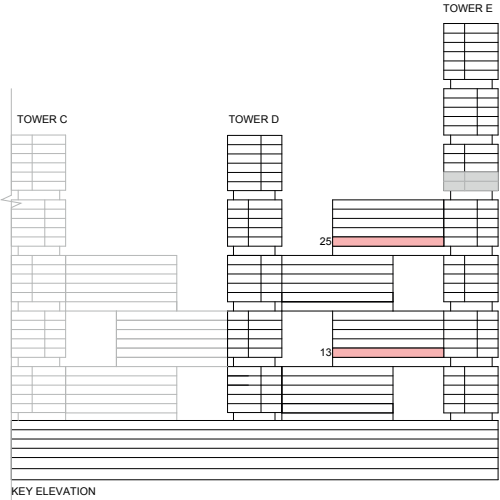
Ras Al Khor, Creek, Amenities  
D719

Ras Al Khor, Golf Course, Creek, Amenities  
D1919

Disclaimer: 1. All dimensions are in metric, measured to wall finishes. 2. All materials, dimensions & drawings are approximate. 3. Information is subject to change without notice, at developer's absolute discretion. 4. Actual area may vary from the stated area. 5. Drawing are not to scale. 6. All images used are for illustrative purpose only and do not represent the actual size, features, specifications, fittings and furnishings. 7. The developer reserves the right to make revisions/ alterations, at its absolute discretion, without any liability whatsoever.

2 BEDROOM LINK APARTMENT  
TYPE K (with yard) VARIANT 3

TOTAL SALEABLE AREA  
SUITE = 803.31 SQ.FT.  
YARD = 139.72 SQ.FT.  
TOTAL = 943.03 SQ.FT.



List of unit numbers with this unit plan:

VIEWS

Ras Al Khor, Golf Course, Creek, Amenities  
E1313, E2513

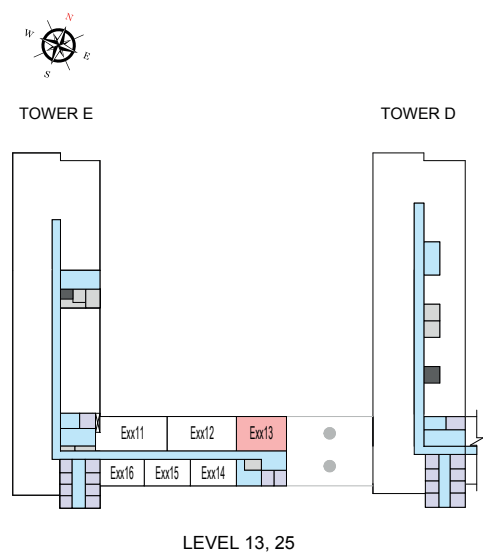
Disclaimer: 1. All dimensions are in metric, measured to wall finishes. 2. All materials, dimensions & drawings are approximate. 3. Information is subject to change without notice, at developer's absolute discretion. 4. Actual area may vary from the stated area. 5. Drawing are not to scale. 6. All images used are for illustrative purpose only and do not represent the actual size, features, specifications, fittings and furnishings. 7. The developer reserves the right to make revisions/ alterations, at its absolute discretion, without any liability whatsoever.



2 BEDROOM LINK APARTMENT  
TYPE K (with yard) VARIANT 3

TOTAL SALEABLE AREA  
SUITE = 803.31 SQ.FT.  
YARD = 139.72 SQ.FT.  
TOTAL = 943.03 SQ.FT.

UNIT



List of unit numbers with this unit plan:

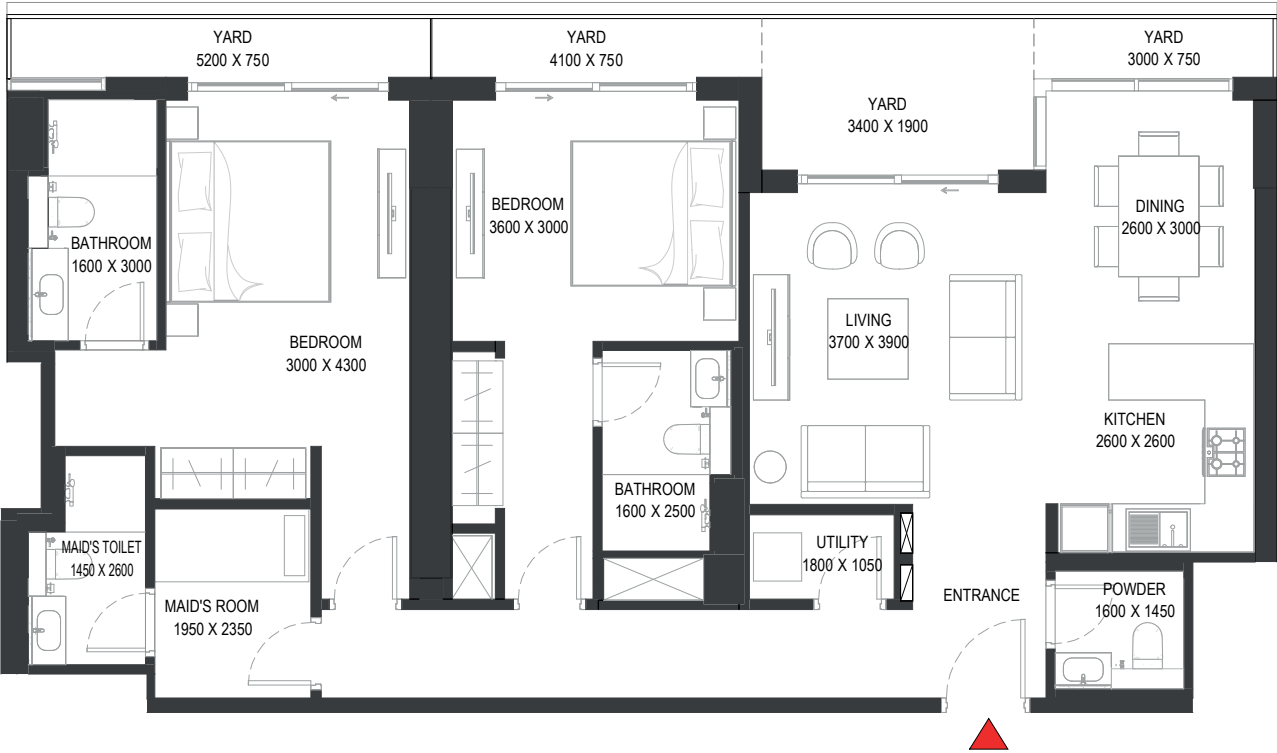
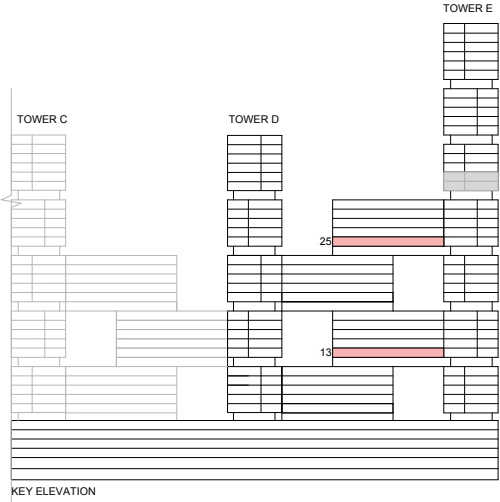
VIEWS

Ras Al Khor, Golf Course, Creek, Amenities  
E1313, E2513

Disclaimer: 1. All dimensions are in metric, measured to wall finishes. 2. All materials, dimensions & drawings are approximate. 3. Information is subject to change without notice, at developer's absolute discretion. 4. Actual area may vary from the stated area. 5. Drawing are not to scale. 6. All images used are for illustrative purpose only and do not represent the actual size, features, specifications, fittings and furnishings. 7. The developer reserves the right to make revisions/ alterations, at its absolute discretion, without any liability whatsoever.

2 BEDROOM LINK APARTMENT  
TYPE M (with maid room, powder room + yard) VARIANT 1

TOTAL SALEABLE AREA  
SUITE = 1,204.91 SQ.FT.  
YARD = 187.94 SQ.FT.  
TOTAL = 1,392.85 SQ.FT.



List of unit numbers with this unit plan:

VIEWS

Ras Al Khor, Golf Course, Creek, Amenities  
E1312, E2512

Disclaimer: 1. All dimensions are in metric, measured to wall finishes. 2. All materials, dimensions & drawings are approximate. 3. Information is subject to change without notice, at developer's absolute discretion. 4. Actual area may vary from the stated area. 5. Drawing are not to scale. 6. All images used are for illustrative purpose only and do not represent the actual size, features, specifications, fittings and furnishings. 7. The developer reserves the right to make revisions/ alterations, at its absolute discretion, without any liability whatsoever.



2 BEDROOM LINK APARTMENT

TYPE M (with maid room, powder room + yard) VARIANT 1

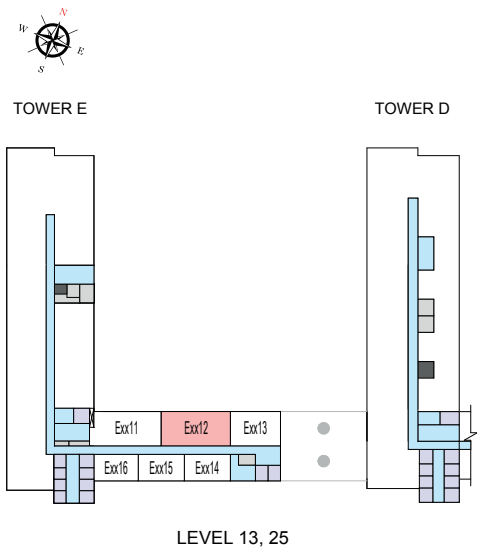
TOTAL SALEABLE AREA

SUITE = 1,204.91 SQ.FT.

YARD = 187.94 SQ.FT.

TOTAL = 1,392.85 SQ.FT.

UNIT



List of unit numbers with this unit plan:

VIEWS

Ras Al Khor, Golf Course, Creek, Amenities  
E1312, E2512

Disclaimer: 1. All dimensions are in metric, measured to wall finishes. 2. All materials, dimensions & drawings are approximate. 3. Information is subject to change without notice, at developer's absolute discretion. 4. Actual area may vary from the stated area. 5. Drawing are not to scale. 6. All images used are for illustrative purpose only and do not represent the actual size, features, specifications, fittings and furnishings. 7. The developer reserves the right to make revisions/ alterations, at its absolute discretion, without any liability whatsoever.





SOBHA ONE

SOBHA  
REALTY

ALL PICTURES SHOWN ARE FOR ILLUSTRATION PURPOSE ONLY. ACTUAL PRODUCT MAY VARY DUE TO PRODUCT ENHANCEMENT.