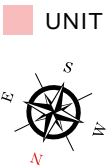
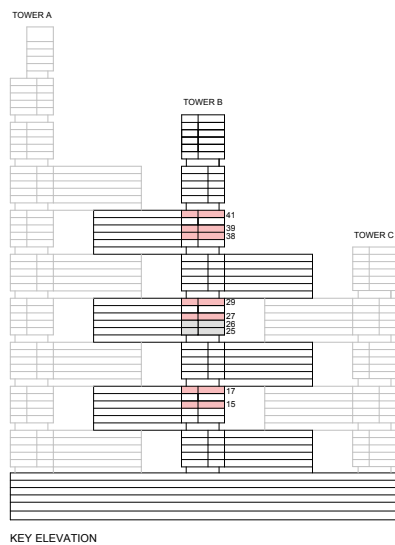


**TOWER B**  
**UNIT PLAN LAYOUTS**

2 BEDROOM APARTMENT  
TYPE E (with balcony)

TOTAL SALEABLE AREA  
SUITE = 803.42 SQ.FT.  
BALCONY = 46.82 SQ.FT.  
TOTAL = 850.24 SQ.FT.



List of unit numbers with this unit plan:

VIEWS

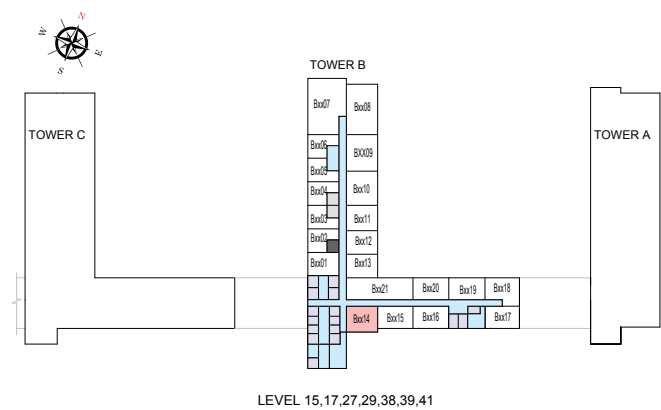
City View  
B1514, B1714, B2714, B2914, B3814, B3914, B4114

Disclaimer: 1. All dimensions are in metric, measured to wall finishes. 2. All materials, dimensions & drawings are approximate. 3. Information is subject to change without notice, at developer's absolute discretion. 4. Actual area may vary from the stated area. 5. Drawing are not to scale. 6. All images used are for illustrative purpose only and do not represent the actual size, features, specifications, fittings and furnishings. 7. The developer reserves the right to make revisions/ alterations, at its absolute discretion, without any liability whatsoever.

2 BEDROOM APARTMENT  
TYPE E (with balcony)

TOTAL SALEABLE AREA  
SUITE = 803.42 SQ.FT.  
BALCONY = 46.82 SQ.FT.  
TOTAL = 850.24 SQ.FT.

UNIT



List of unit numbers with this unit plan:

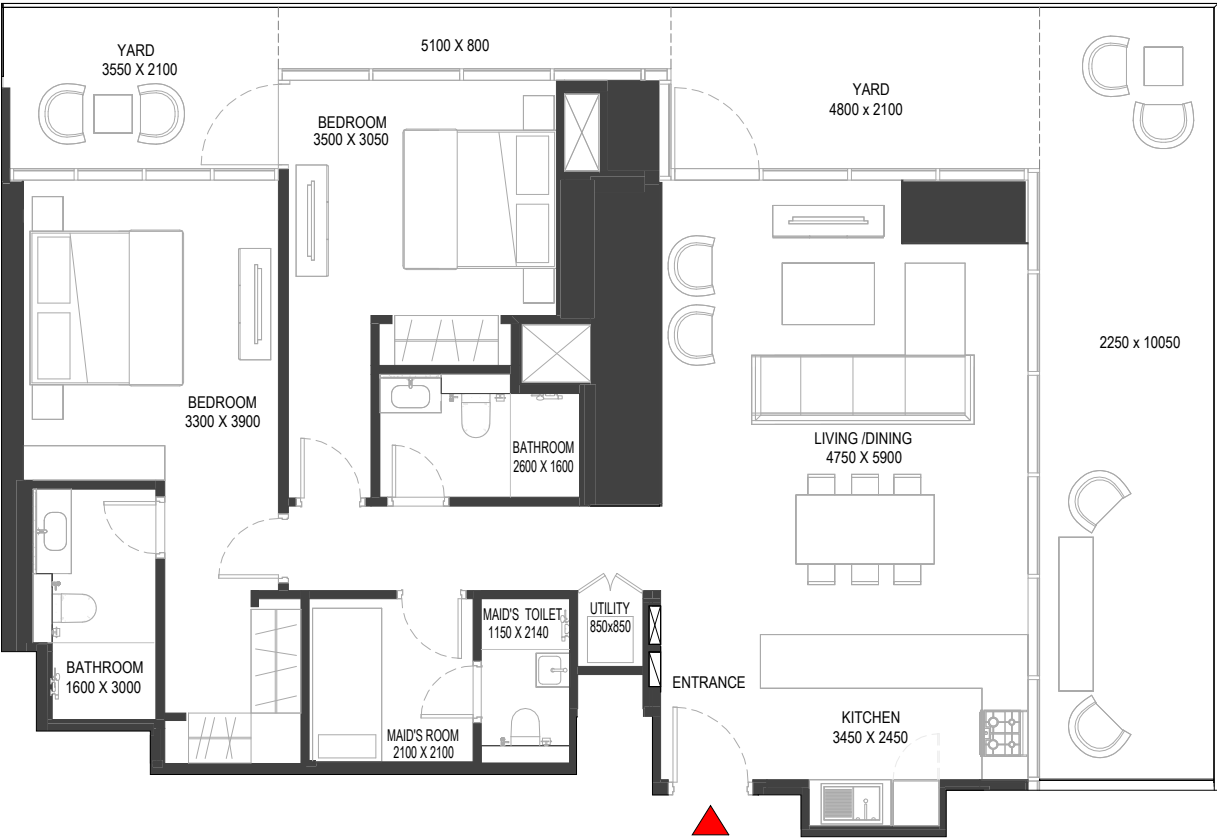
VIEWS

City View  
B1514, B1714, B2714, B2914, B3814, B3914, B4114

Disclaimer: 1. All dimensions are in metric, measured to wall finishes. 2. All materials, dimensions & drawings are approximate. 3. Information is subject to change without notice, at developer's absolute discretion. 4. Actual area may vary from the stated area. 5. Drawing are not to scale. 6. All images used are for illustrative purpose only and do not represent the actual size, features, specifications, fittings and furnishings. 7. The developer reserves the right to make revisions/ alterations, at its absolute discretion, without any liability whatsoever.

2 BEDROOM APARTMENT  
TYPE J (with maid room + yard)

TOTAL SALEABLE AREA  
SUITE = 1,200.82 SQ.FT.  
YARD = 494.49 SQ.FT.  
TOTAL = 1,695.31 SQ.FT.



List of unit numbers with this unit plan:

VIEWS

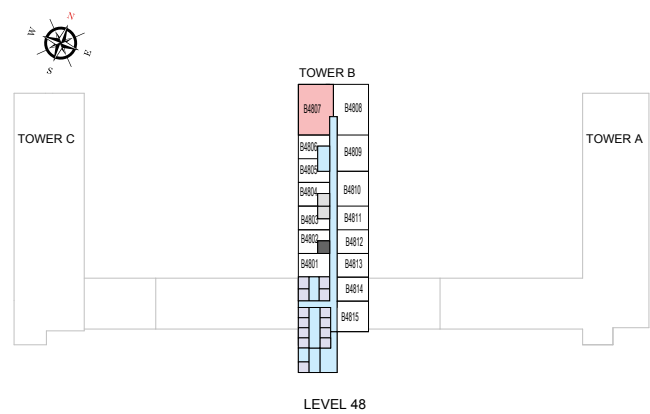
Downtown, Ras Al Khor, Golf Course, Creek  
B4807

Disclaimer: 1. All dimensions are in metric, measured to wall finishes. 2. All materials, dimensions & drawings are approximate. 3. Information is subject to change without notice, at developer's absolute discretion. 4. Actual area may vary from the stated area. 5. Drawing are not to scale. 6. All images used are for illustrative purpose only and do not represent the actual size, features, specifications, fittings and furnishings. 7. The developer reserves the right to make revisions/ alterations, at its absolute discretion, without any liability whatsoever.

2 BEDROOM APARTMENT  
TYPE J (with maid room + yard)

TOTAL SALEABLE AREA  
SUITE = 1,200.82 SQ.FT.  
YARD = 494.49 SQ.FT.  
TOTAL = 1,695.31 SQ.FT.

UNIT



List of unit numbers with this unit plan:

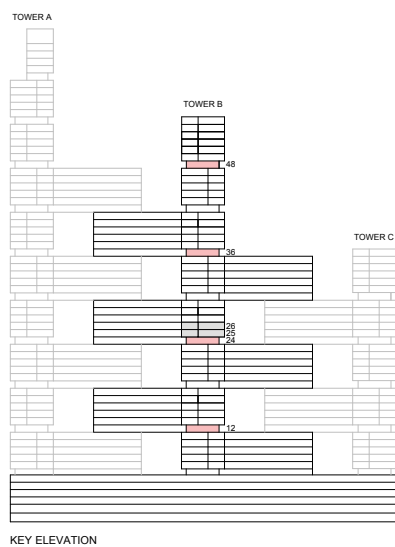
VIEWS

Downtown, Ras Al Khor, Golf Course, Creek  
B4807

Disclaimer: 1. All dimensions are in metric, measured to wall finishes. 2. All materials, dimensions & drawings are approximate. 3. Information is subject to change without notice, at developer's absolute discretion. 4. Actual area may vary from the stated area. 5. Drawing are not to scale. 6. All images used are for illustrative purpose only and do not represent the actual size, features, specifications, fittings and furnishings. 7. The developer reserves the right to make revisions/ alterations, at its absolute discretion, without any liability whatsoever.

2 BEDROOM APARTMENT  
TYPE K (with maid room + yard)

TOTAL SALEABLE AREA  
SUITE = 1,201.58 SQ.FT.  
YARD = 672.31 SQ.FT.  
TOTAL = 1,873.89 SQ.FT.



List of unit numbers with this unit plan:

VIEWS

Downtown, Ras Al Khor, Golf Course, Amenities, Creek, Water Body  
B1208, B2408

Downtown, Ras Al Khor, Golf Course, Water Body, Creek  
B3608

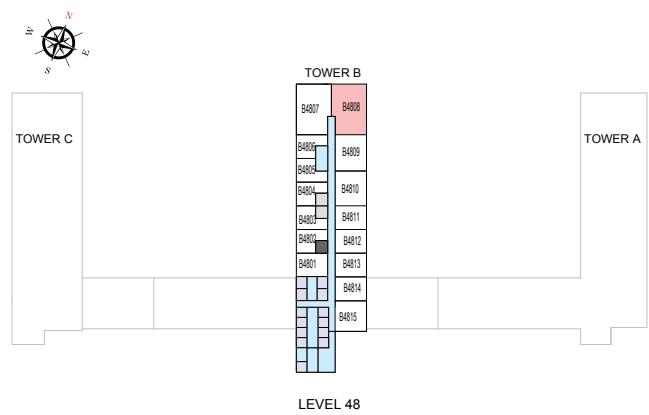
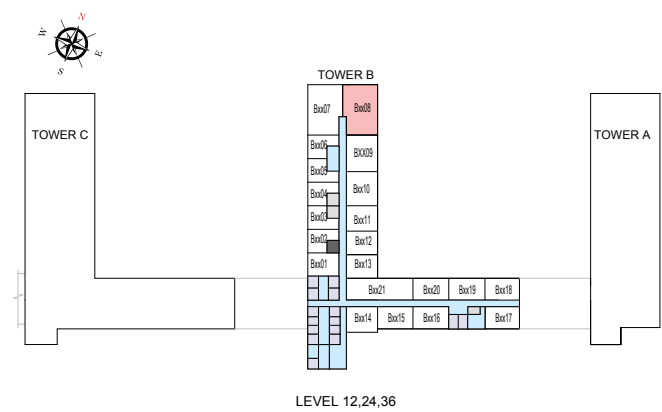
Downtown, Ras Al Khor, Golf Course, Creek  
B4808

Disclaimer: 1. All dimensions are in metric, measured to wall finishes. 2. All materials, dimensions & drawings are approximate. 3. Information is subject to change without notice, at developer's absolute discretion. 4. Actual area may vary from the stated area. 5. Drawing are not to scale. 6. All images used are for illustrative purpose only and do not represent the actual size, features, specifications, fittings and furnishings. 7. The developer reserves the right to make revisions/ alterations, at its absolute discretion, without any liability whatsoever.

2 BEDROOM APARTMENT  
TYPE K (with maid room + yard)

TOTAL SALEABLE AREA  
SUITE = 1,201.58 SQ.FT.  
YARD = 672.31 SQ.FT.  
TOTAL = 1,873.89 SQ.FT.

UNIT



List of unit numbers with this unit plan:

VIEWS

Downtown, Ras Al Khor, Golf Course, Amenities, Creek, Water Body  
B1208, B2408

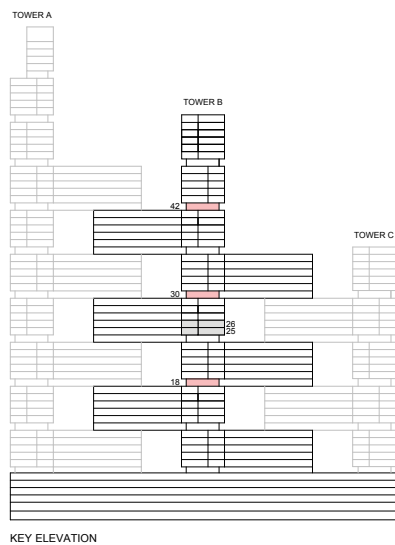
Downtown, Ras Al Khor, Golf Course, Water Body, Creek  
B3608

Downtown, Ras Al Khor, Golf Course, Creek  
B4808

Disclaimer: 1. All dimensions are in metric, measured to wall finishes. 2. All materials, dimensions & drawings are approximate. 3. Information is subject to change without notice, at developer's absolute discretion. 4. Actual area may vary from the stated area. 5. Drawing are not to scale. 6. All images used are for illustrative purpose only and do not represent the actual size, features, specifications, fittings and furnishings. 7. The developer reserves the right to make revisions/ alterations, at its absolute discretion, without any liability whatsoever.

2 BEDROOM APARTMENT  
TYPE K (with maid room + yard) VARIANT 1

TOTAL SALEABLE AREA  
SUITE = 1,201.58 SQ.FT.  
YARD = 672.31 SQ.FT.  
TOTAL = 1,873.89 SQ.FT.



List of unit numbers with this unit plan:

VIEWS

- Downtown, Ras Al Khor, Golf Course, Amenities, Creek, Water Body  
B1807
- Downtown, Ras Al Khor, Golf Course, Water Body, Creek  
B3007
- Downtown, Ras Al Khor, Golf Course, Creek  
B4207

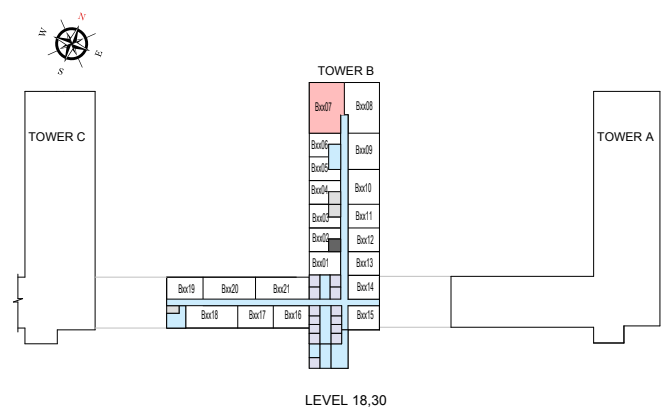
Disclaimer: 1. All dimensions are in metric, measured to wall finishes. 2. All materials, dimensions & drawings are approximate. 3. Information is subject to change without notice, at developer's absolute discretion. 4. Actual area may vary from the stated area. 5. Drawing are not to scale. 6. All images used are for illustrative purpose only and do not represent the actual size, features, specifications, fittings and furnishings. 7. The developer reserves the right to make revisions/ alterations, at its absolute discretion, without any liability whatsoever.



2 BEDROOM APARTMENT  
TYPE K (with maid room + yard) VARIANT 1

TOTAL SALEABLE AREA  
SUITE = 1,201.58 SQ.FT.  
YARD = 672.31 SQ.FT.  
TOTAL = 1,873.89 SQ.FT.

UNIT



List of unit numbers with this unit plan:

VIEWS

Downtown, Ras Al Khor, Golf Course, Amenities, Creek, Water Body  
B1807

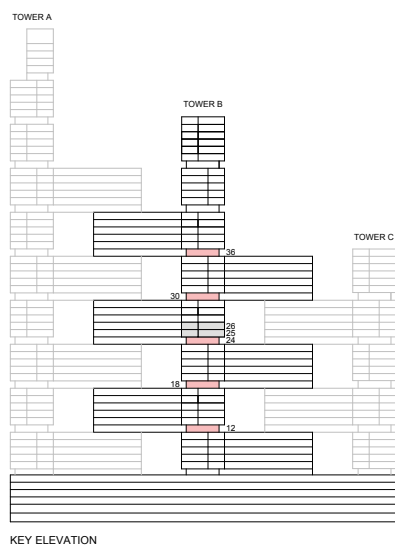
Downtown, Ras Al Khor, Golf Course, Water Body, Creek  
B3007

Downtown, Ras Al Khor, Golf Course, Creek  
B4207

Disclaimer: 1. All dimensions are in metric, measured to wall finishes. 2. All materials, dimensions & drawings are approximate. 3. Information is subject to change without notice, at developer's absolute discretion. 4. Actual area may vary from the stated area. 5. Drawing are not to scale. 6. All images used are for illustrative purpose only and do not represent the actual size, features, specifications, fittings and furnishings. 7. The developer reserves the right to make revisions/ alterations, at its absolute discretion, without any liability whatsoever.

2 BEDROOM APARTMENT  
TYPE N (with yard)

TOTAL SALEABLE AREA  
SUITE = 802.34 SQ.FT.  
YARD = 174.27 SQ.FT.  
TOTAL = 976.61 SQ.FT.



List of unit numbers with this unit plan:

VIEWS

City View

B1214, B2414, B3614

Golf Course, Amenities, Creek

B1815

Golf Course, Creek

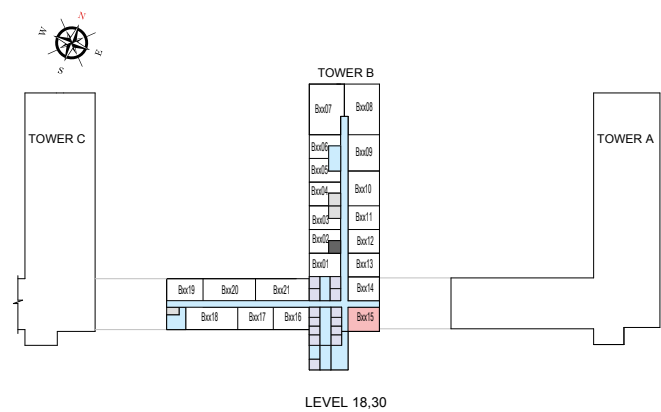
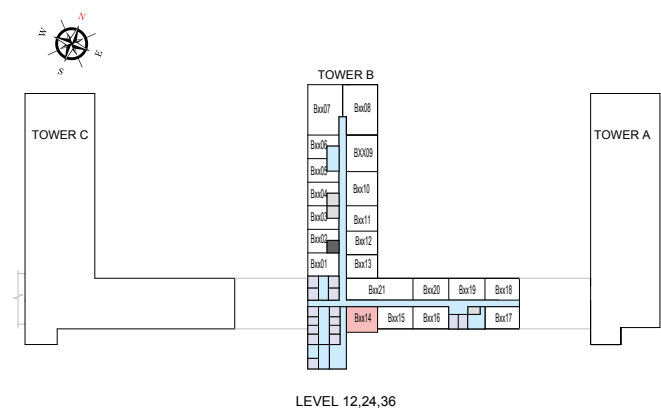
B3015

Disclaimer: 1. All dimensions are in metric, measured to wall finishes. 2. All materials, dimensions & drawings are approximate. 3. Information is subject to change without notice, at developer's absolute discretion. 4. Actual area may vary from the stated area. 5. Drawing are not to scale. 6. All images used are for illustrative purpose only and do not represent the actual size, features, specifications, fittings and furnishings. 7. The developer reserves the right to make revisions/ alterations, at its absolute discretion, without any liability whatsoever.

2 BEDROOM APARTMENT  
TYPE N (with yard)

TOTAL SALEABLE AREA  
SUITE = 802.34 SQ.FT.  
YARD = 174.27 SQ.FT.  
TOTAL = 976.61 SQ.FT.

UNIT



List of unit numbers with this unit plan:

VIEWS

City View

B1214, B2414, B3614

Golf Course, Amenities, Creek

B1815

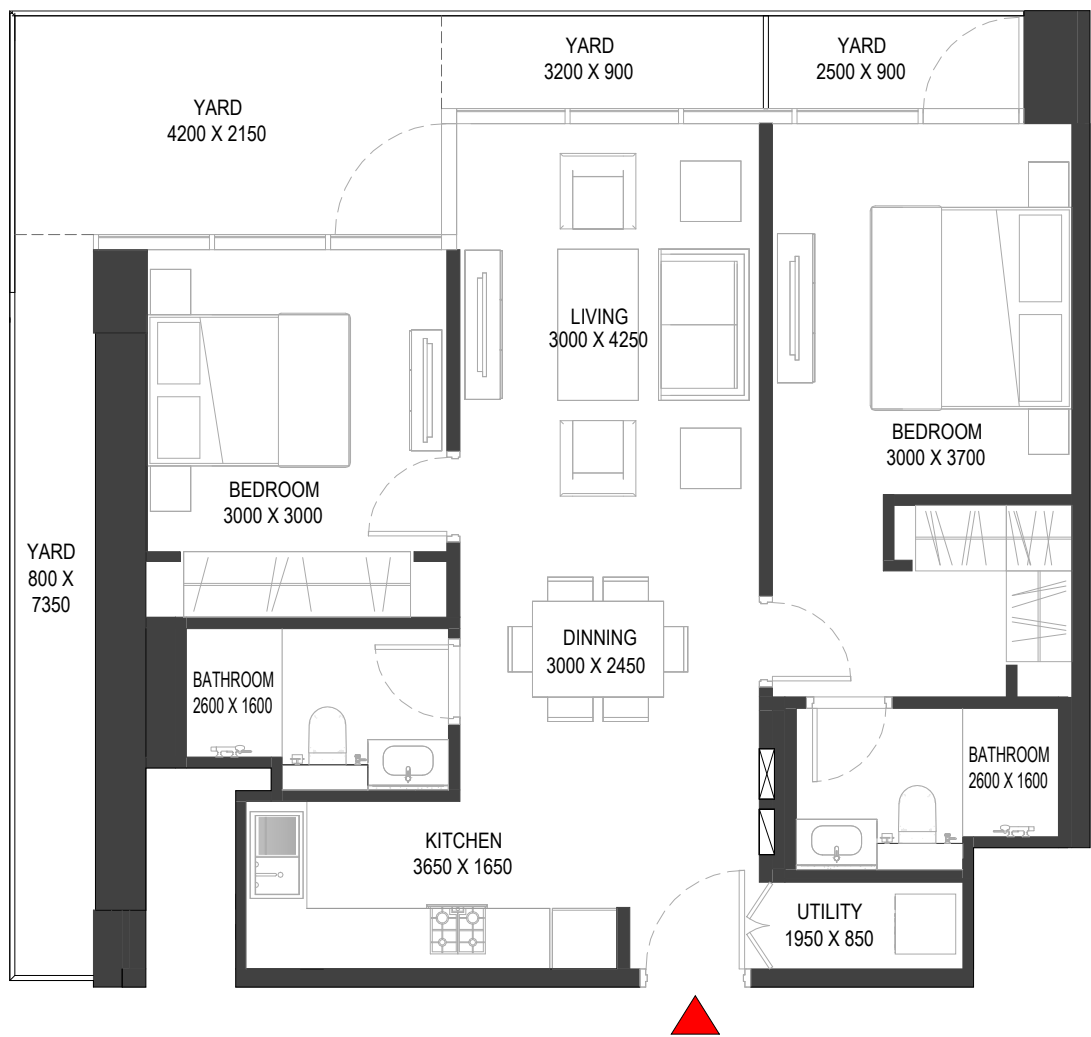
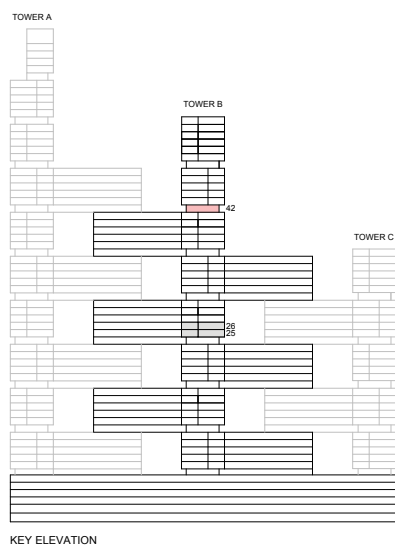
Golf Course, Creek

B3015

Disclaimer: 1. All dimensions are in metric, measured to wall finishes. 2. All materials, dimensions & drawings are approximate. 3. Information is subject to change without notice, at developer's absolute discretion. 4. Actual area may vary from the stated area. 5. Drawing are not to scale. 6. All images used are for illustrative purpose only and do not represent the actual size, features, specifications, fittings and furnishings. 7. The developer reserves the right to make revisions/ alterations, at its absolute discretion, without any liability whatsoever.

2 BEDROOM APARTMENT  
TYPE N (with yard) VARIANT 2

TOTAL SALEABLE AREA  
SUITE = 802.34 SQ.FT.  
YARD = 250.37 SQ.FT.  
TOTAL = 1,052.71 SQ.FT.



List of unit numbers with this unit plan:

VIEWS

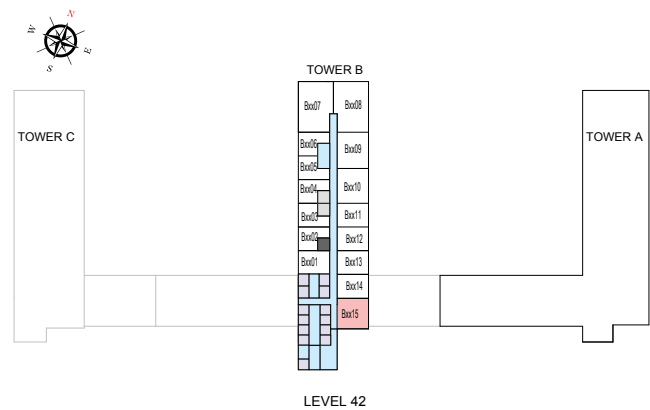
Golf Course, Creek  
B4215

Disclaimer: 1. All dimensions are in metric, measured to wall finishes. 2. All materials, dimensions & drawings are approximate. 3. Information is subject to change without notice, at developer's absolute discretion. 4. Actual area may vary from the stated area. 5. Drawing are not to scale. 6. All images used are for illustrative purpose only and do not represent the actual size, features, specifications, fittings and furnishings. 7. The developer reserves the right to make revisions/ alterations, at its absolute discretion, without any liability whatsoever.

2 BEDROOM APARTMENT  
TYPE N (with yard) VARIANT 2

TOTAL SALEABLE AREA  
SUITE = 802.34 SQ.FT.  
YARD = 250.37 SQ.FT.  
TOTAL = 1,052.71 SQ.FT.

UNIT



List of unit numbers with this unit plan:

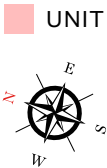
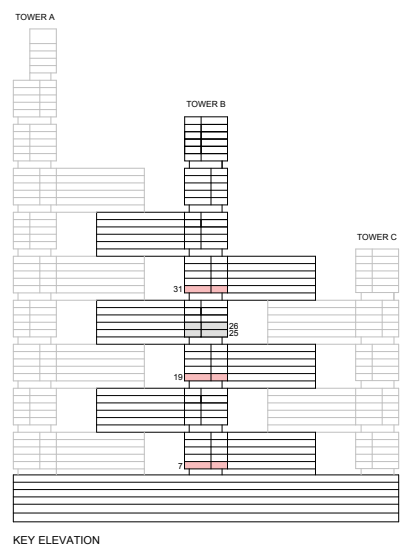
VIEWS

Golf Course, Creek  
B4215

Disclaimer: 1. All dimensions are in metric, measured to wall finishes. 2. All materials, dimensions & drawings are approximate. 3. Information is subject to change without notice, at developer's absolute discretion. 4. Actual area may vary from the stated area. 5. Drawing are not to scale. 6. All images used are for illustrative purpose only and do not represent the actual size, features, specifications, fittings and furnishings. 7. The developer reserves the right to make revisions/ alterations, at its absolute discretion, without any liability whatsoever.

2 BEDROOM APARTMENT  
TYPE Q (with maid room + yard) VARIANT 1

TOTAL SALEABLE AREA  
SUITE = 1,025.69 SQ.FT.  
YARD = 221.52 SQ.FT.  
TOTAL = 1,247.21 SQ.FT.



List of unit numbers with this unit plan:

VIEWS

Golf Course, Amenities, Creek  
B1915

Golf Course, Creek  
B3115

Amenities, Creek  
B715

Disclaimer: 1. All dimensions are in metric, measured to wall finishes. 2. All materials, dimensions & drawings are approximate. 3. Information is subject to change without notice, at developer's absolute discretion. 4. Actual area may vary from the stated area. 5. Drawing are not to scale. 6. All images used are for illustrative purpose only and do not represent the actual size, features, specifications, fittings and furnishings. 7. The developer reserves the right to make revisions/ alterations, at its absolute discretion, without any liability whatsoever.

2 BEDROOM APARTMENT

TYPE Q (with maid room + yard) VARIANT 1

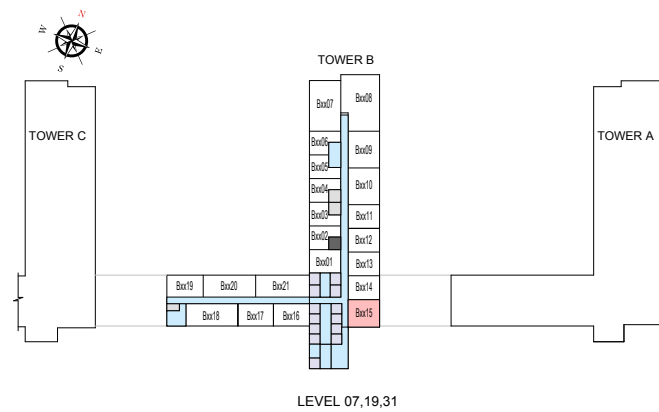
TOTAL SALEABLE AREA

SUITE = 1,025.69 SQ.FT.

YARD = 221.52 SQ.FT.

TOTAL = 1,247.21 SQ.FT.

UNIT



List of unit numbers with this unit plan:

VIEWS

Golf Course, Amenities, Creek  
B1915

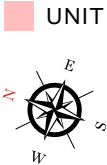
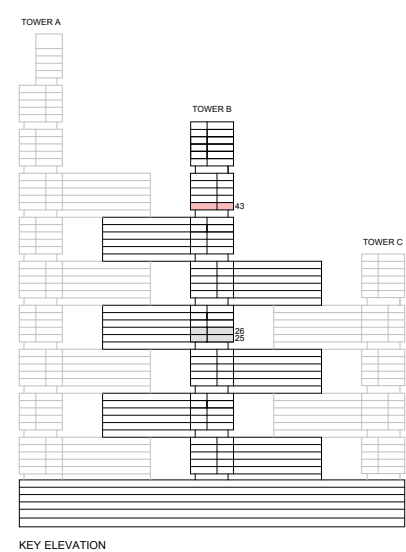
Golf Course, Creek  
B3115

Amenities, Creek  
B715

Disclaimer: 1. All dimensions are in metric, measured to wall finishes. 2. All materials, dimensions & drawings are approximate. 3. Information is subject to change without notice, at developer's absolute discretion. 4. Actual area may vary from the stated area. 5. Drawing are not to scale. 6. All images used are for illustrative purpose only and do not represent the actual size, features, specifications, fittings and furnishings. 7. The developer reserves the right to make revisions/ alterations, at its absolute discretion, without any liability whatsoever.

2 BEDROOM APARTMENT  
TYPE Q (with maid room + yard) VARIANT 4

TOTAL SALEABLE AREA  
SUITE = 1,027.20 SQ.FT.  
YARD = 262.96 SQ.FT.  
TOTAL = 1,290.16 SQ.FT.



List of unit numbers with this unit plan:

VIEWS

Golf Course, Creek  
B4315

Disclaimer: 1. All dimensions are in metric, measured to wall finishes. 2. All materials, dimensions & drawings are approximate. 3. Information is subject to change without notice, at developer's absolute discretion. 4. Actual area may vary from the stated area. 5. Drawing are not to scale. 6. All images used are for illustrative purpose only and do not represent the actual size, features, specifications, fittings and furnishings. 7. The developer reserves the right to make revisions/ alterations, at its absolute discretion, without any liability whatsoever.



2 BEDROOM APARTMENT

TYPE Q (with maid room + yard) VARIANT 4

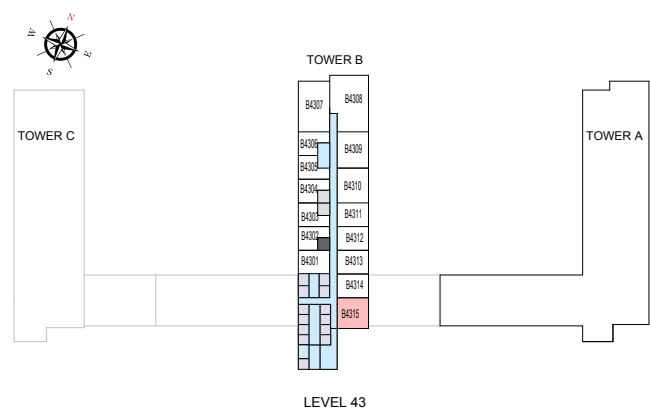
TOTAL SALEABLE AREA

SUITE = 1,027.20 SQ.FT.

YARD = 262.96 SQ.FT.

TOTAL = 1,290.16 SQ.FT.

UNIT



List of unit numbers with this unit plan:

VIEWS

Golf Course, Creek  
B4315

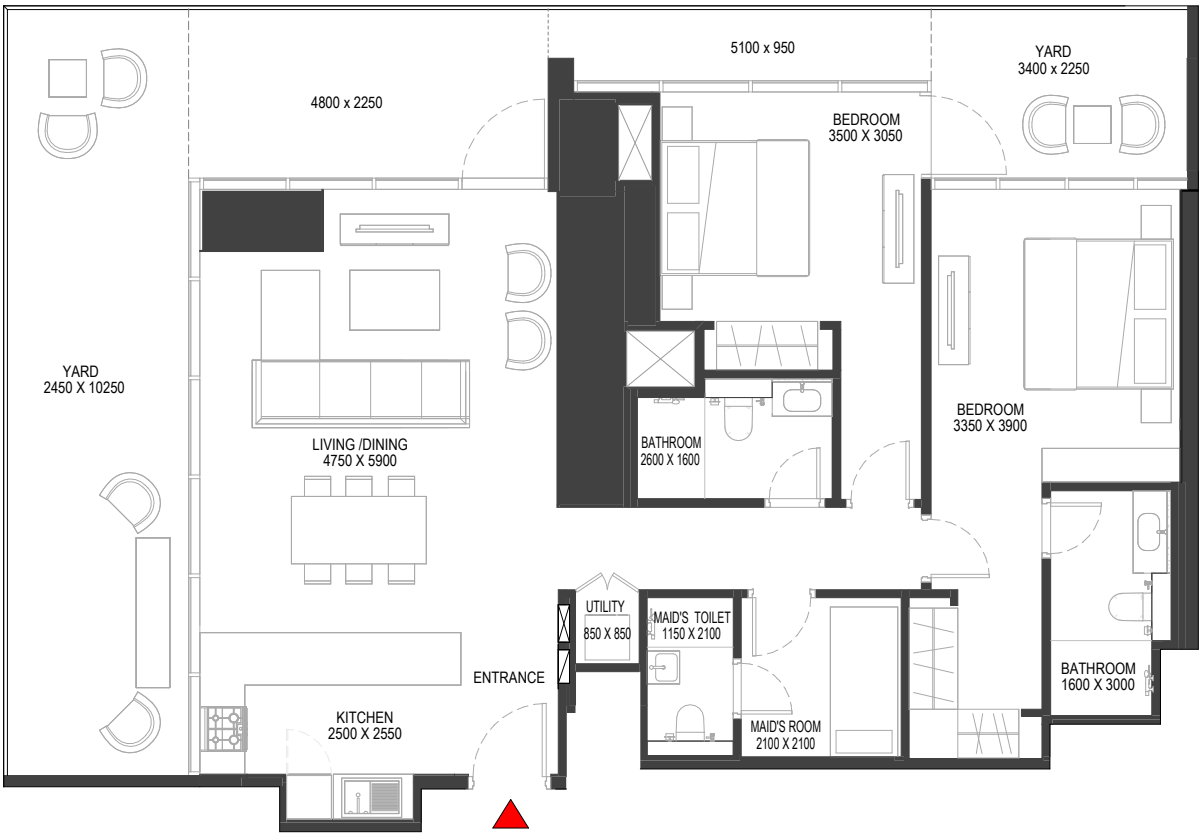
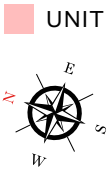
Disclaimer: 1. All dimensions are in metric, measured to wall finishes. 2. All materials, dimensions & drawings are approximate. 3. Information is subject to change without notice, at developer's absolute discretion. 4. Actual area may vary from the stated area. 5. Drawing are not to scale. 6. All images used are for illustrative purpose only and do not represent the actual size, features, specifications, fittings and furnishings. 7. The developer reserves the right to make revisions/ alterations, at its absolute discretion, without any liability whatsoever.

2 BEDROOM APARTMENT

TYPE R (with maid room + yard)

TOTAL SALEABLE AREA

SUITE = 1,191.89 SQ.FT.  
YARD = 499.01 SQ.FT.  
TOTAL = 1,690.90 SQ.FT.



List of unit numbers with this unit plan:

VIEWS

Downtown, Ras Al Khor, Golf Course, Amenities, Creek, Water Body  
B1308

Downtown, Ras Al Khor, Golf Course, Water Body, Creek  
B3708

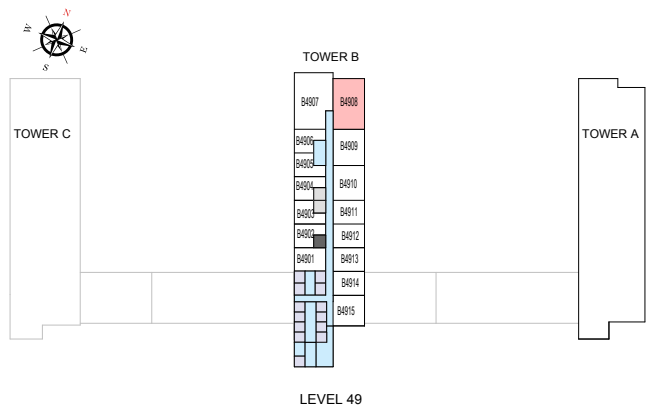
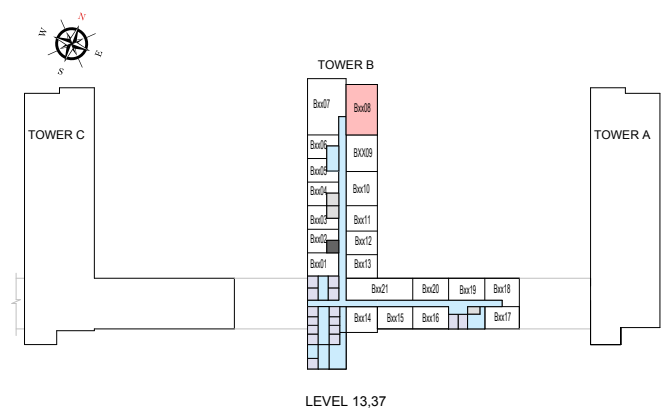
Downtown, Ras Al Khor, Golf Course, Creek  
B4908

Disclaimer: 1. All dimensions are in metric, measured to wall finishes. 2. All materials, dimensions & drawings are approximate. 3. Information is subject to change without notice, at developer's absolute discretion. 4. Actual area may vary from the stated area. 5. Drawing are not to scale. 6. All images used are for illustrative purpose only and do not represent the actual size, features, specifications, fittings and furnishings. 7. The developer reserves the right to make revisions/ alterations, at its absolute discretion, without any liability whatsoever.

2 BEDROOM APARTMENT  
TYPE R (with maid room + yard)

TOTAL SALEABLE AREA  
SUITE = 1,191.89 SQ.FT.  
YARD = 499.01 SQ.FT.  
TOTAL = 1,690.90 SQ.FT.

UNIT



List of unit numbers with this unit plan:

VIEWS

Downtown, Ras Al Khor, Golf Course, Amenities, Creek, Water Body  
B1308

Downtown, Ras Al Khor, Golf Course, Water Body, Creek  
B3708

Downtown, Ras Al Khor, Golf Course, Creek  
B4908

Disclaimer: 1. All dimensions are in metric, measured to wall finishes. 2. All materials, dimensions & drawings are approximate. 3. Information is subject to change without notice, at developer's absolute discretion. 4. Actual area may vary from the stated area. 5. Drawing are not to scale. 6. All images used are for illustrative purpose only and do not represent the actual size, features, specifications, fittings and furnishings. 7. The developer reserves the right to make revisions/ alterations, at its absolute discretion, without any liability whatsoever.

## 2 BEDROOM APARTMENT

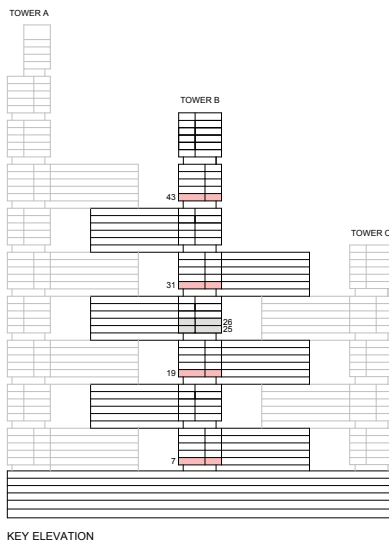
TYPE R (with maid room + yard) VARIANT 1

### TOTAL SALEABLE AREA

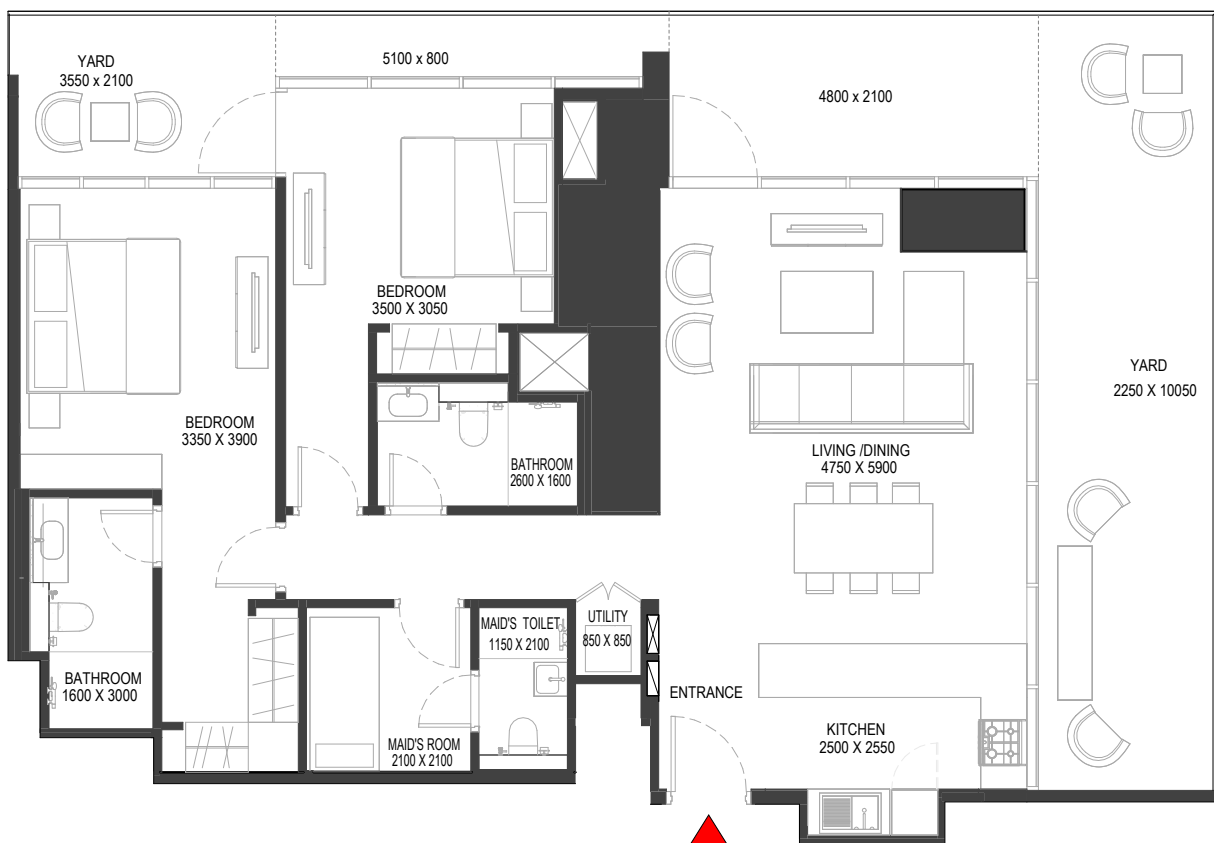
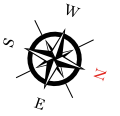
SUITE = 1,191.89 SQ.FT.

YARD = 499.01 SQ.FT.

TOTAL = 1,690.90 SQ.FT.



UNIT



List of unit numbers with this unit plan:

### VIEWS

Downtown, Ras Al Khor, Golf Course, Amenities, Creek, Water Body  
B707, B1907

Downtown, Ras Al Khor, Golf Course, Water Body, Creek  
B3107

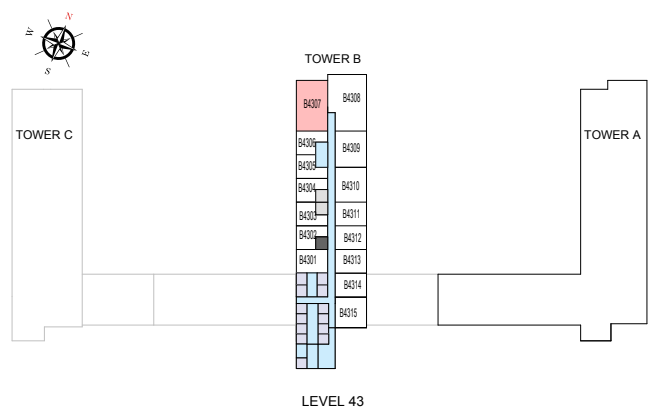
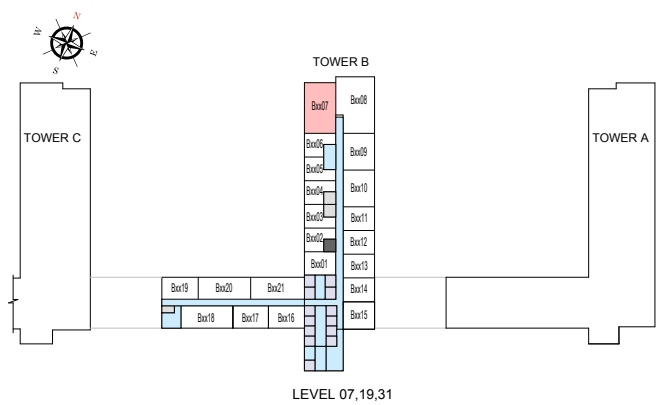
Downtown, Ras Al Khor, Golf Course, Creek  
B4307

Disclaimer: 1. All dimensions are in metric, measured to wall finishes. 2. All materials, dimensions & drawings are approximate. 3. Information is subject to change without notice, at developer's absolute discretion. 4. Actual area may vary from the stated area. 5. Drawing are not to scale. 6. All images used are for illustrative purpose only and do not represent the actual size, features, specifications, fittings and furnishings. 7. The developer reserves the right to make revisions/ alterations, at its absolute discretion, without any liability whatsoever.

2 BEDROOM APARTMENT  
TYPE R (with maid room + yard) VARIANT 1

TOTAL SALEABLE AREA  
SUITE = 1,191.89 SQ.FT.  
YARD = 499.01 SQ.FT.  
TOTAL = 1,690.90 SQ.FT.

UNIT



List of unit numbers with this unit plan:

VIEWS

Downtown, Ras Al Khor, Golf Course, Amenities, Creek, Water Body  
B707, B1907

Downtown, Ras Al Khor, Golf Course, Water Body, Creek  
B3107

Downtown, Ras Al Khor, Golf Course, Creek  
B4307

Disclaimer: 1. All dimensions are in metric, measured to wall finishes. 2. All materials, dimensions & drawings are approximate. 3. Information is subject to change without notice, at developer's absolute discretion. 4. Actual area may vary from the stated area. 5. Drawing are not to scale. 6. All images used are for illustrative purpose only and do not represent the actual size, features, specifications, fittings and furnishings. 7. The developer reserves the right to make revisions/ alterations, at its absolute discretion, without any liability whatsoever.

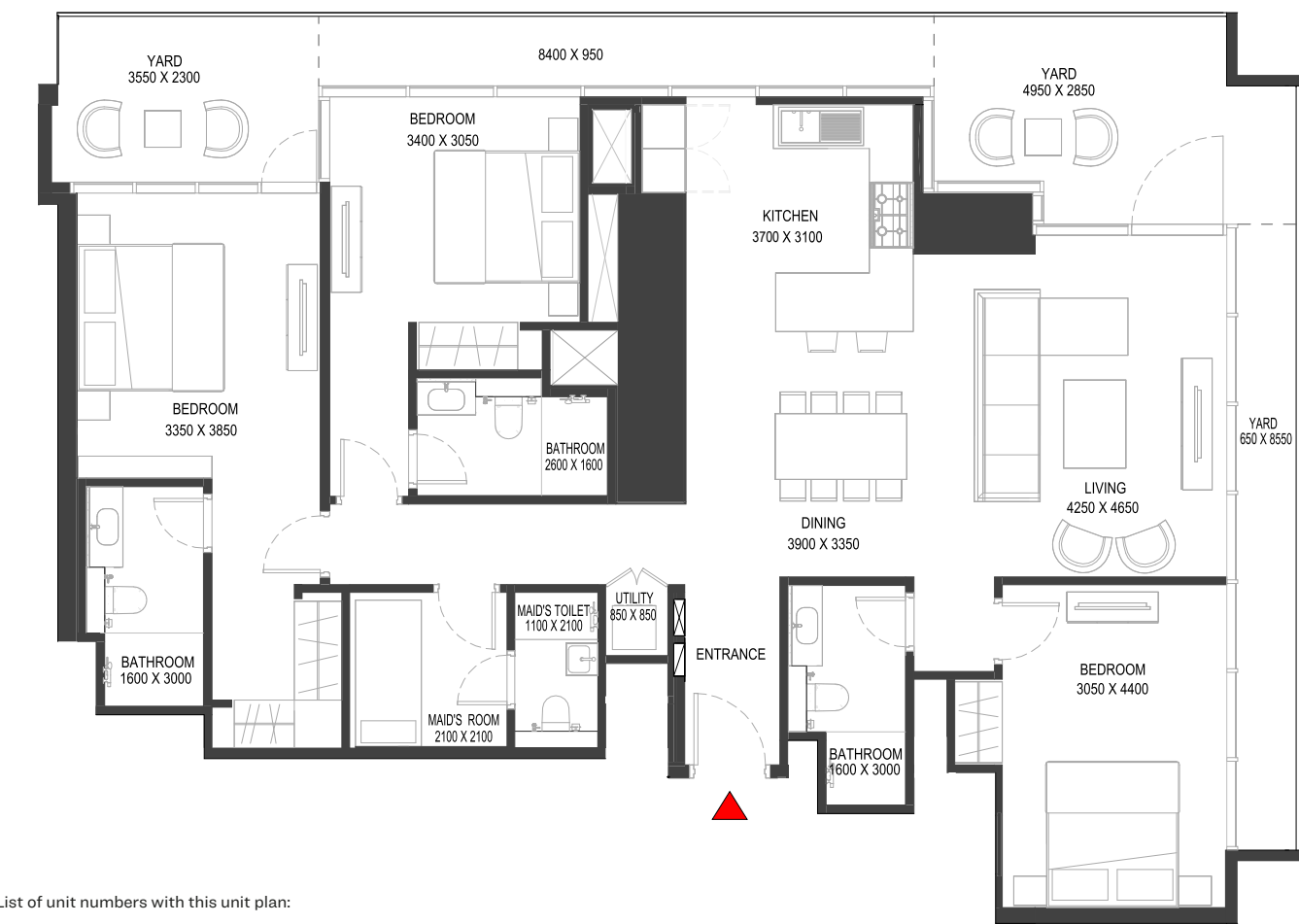
# 3 BEDROOM APARTMENT TYPE F (with maid room + yard)

TOTAL SALEABLE AREA

SUITE = 1,517.07 SQ.FT.

YARD = 363.93 SQ.FT.

TOTAL = 1,881.00 SQ.FT.



List of unit numbers with this unit plan:

## VIEWS

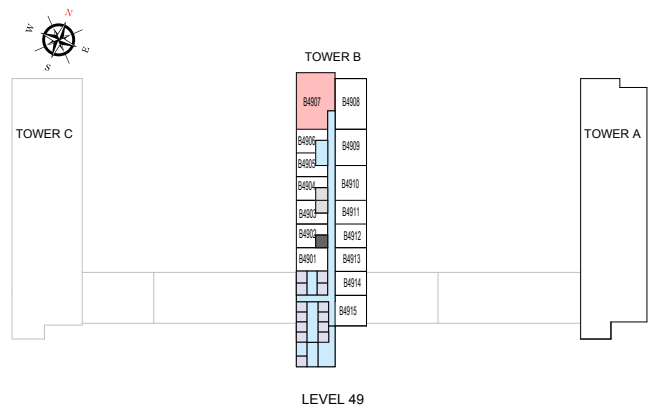
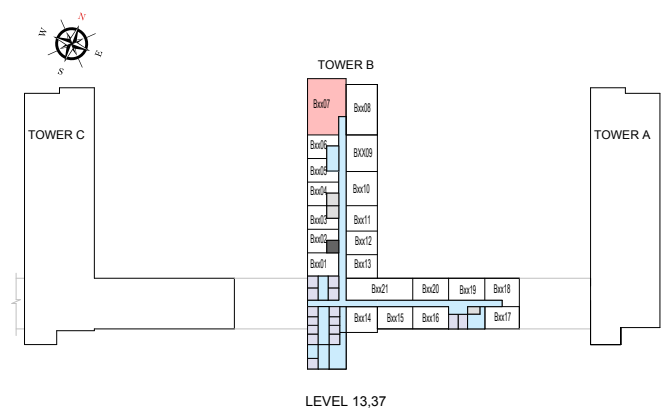
- Downtown, Ras Al Khor, Golf Course, Amenities, Creek, Water Body  
B1307
- Downtown, Ras Al Khor, Golf Course, Water Body, Creek  
B3707
- Downtown, Ras Al Khor, Golf Course, Creek  
B4907

Disclaimer: 1. All dimensions are in metric, measured to wall finishes. 2. All materials, dimensions & drawings are approximate. 3. Information is subject to change without notice, at developer's absolute discretion. 4. Actual area may vary from the stated area. 5. Drawing are not to scale. 6. All images used are for illustrative purpose only and do not represent the actual size, features, specifications, fittings and furnishings. 7. The developer reserves the right to make revisions/ alterations, at its absolute discretion, without any liability whatsoever.

3 BEDROOM APARTMENT  
TYPE F (with maid room + yard)

TOTAL SALEABLE AREA  
SUITE = 1,517.07 SQ.FT.  
YARD = 363.93 SQ.FT.  
TOTAL = 1,881.00 SQ.FT.

UNIT



List of unit numbers with this unit plan:

VIEWS

Downtown, Ras Al Khor, Golf Course, Amenities, Creek, Water Body  
B1307

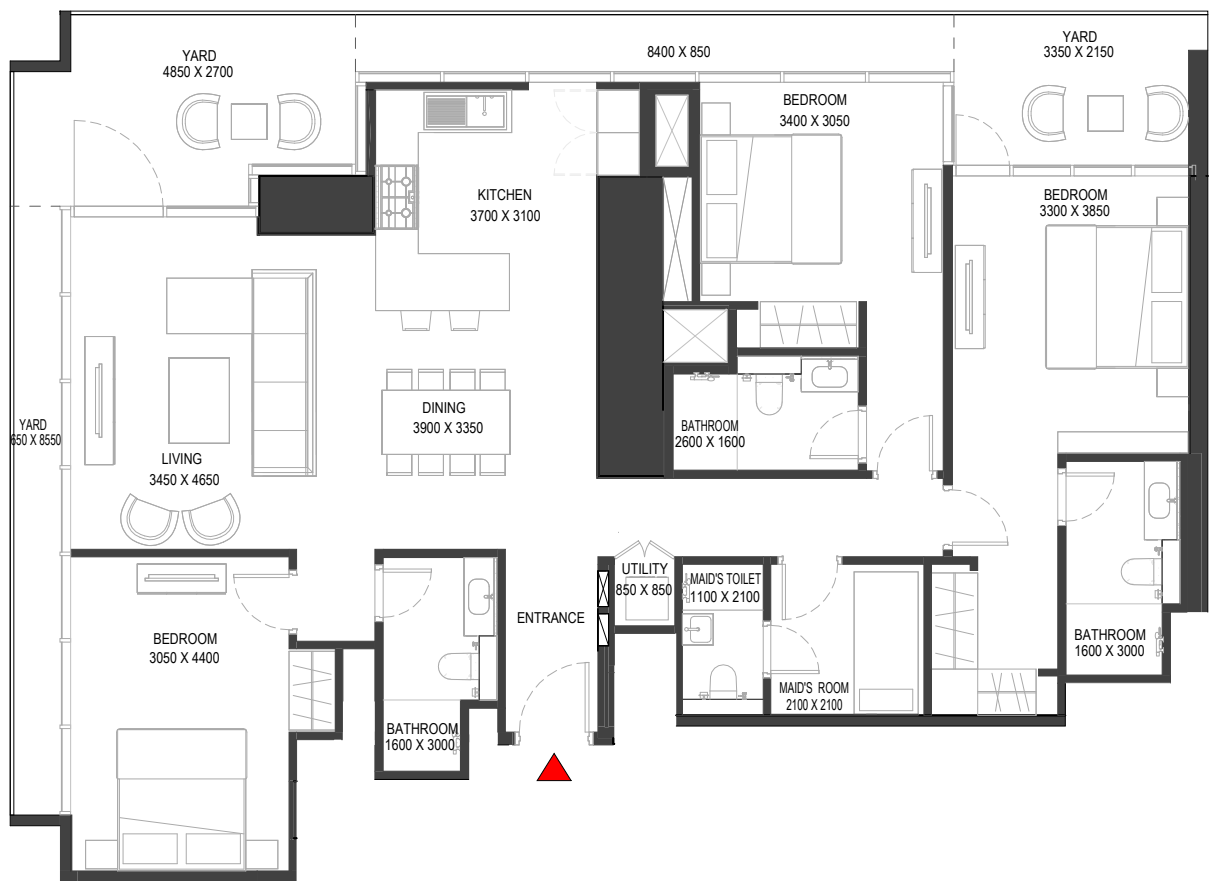
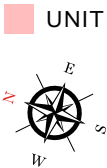
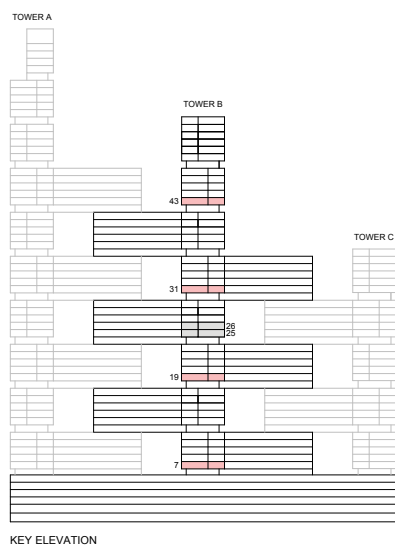
Downtown, Ras Al Khor, Golf Course, Water Body, Creek  
B3707

Downtown, Ras Al Khor, Golf Course, Creek  
B4907

Disclaimer: 1. All dimensions are in metric, measured to wall finishes. 2. All materials, dimensions & drawings are approximate. 3. Information is subject to change without notice, at developer's absolute discretion. 4. Actual area may vary from the stated area. 5. Drawing are not to scale. 6. All images used are for illustrative purpose only and do not represent the actual size, features, specifications, fittings and furnishings. 7. The developer reserves the right to make revisions/ alterations, at its absolute discretion, without any liability whatsoever.

3 BEDROOM APARTMENT  
TYPE F (with maid room + yard) VARIANT 1

TOTAL SALEABLE AREA  
SUITE = 1,517.07 SQ.FT.  
YARD = 363.93 SQ.FT.  
TOTAL = 1,881.00 SQ.FT.



List of unit numbers with this unit plan:

VIEWS

Downtown, Ras Al Khor, Golf Course, Amenities, Creek, Water Body  
B708, B1908

Downtown, Ras Al Khor, Golf Course, Water Body, Creek  
B3108

Downtown, Ras Al Khor, Golf Course, Creek  
B4308

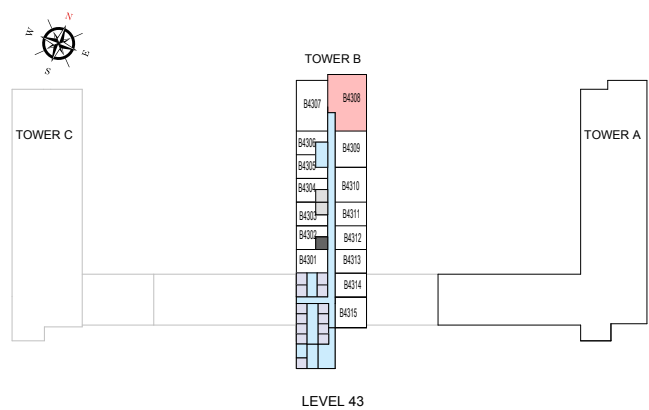
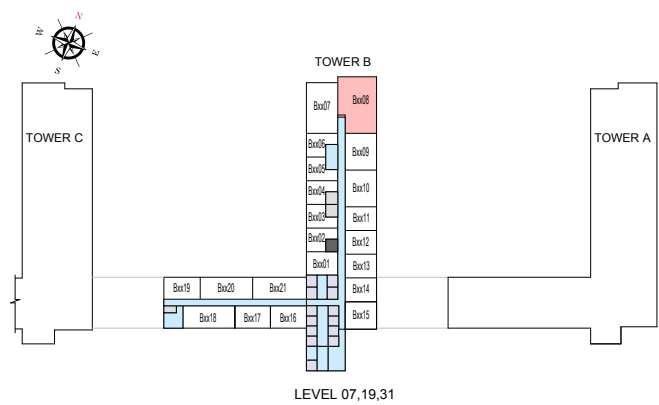
Disclaimer: 1. All dimensions are in metric, measured to wall finishes. 2. All materials, dimensions & drawings are approximate. 3. Information is subject to change without notice, at developer's absolute discretion. 4. Actual area may vary from the stated area. 5. Drawing are not to scale. 6. All images used are for illustrative purpose only and do not represent the actual size, features, specifications, fittings and furnishings. 7. The developer reserves the right to make revisions/ alterations, at its absolute discretion, without any liability whatsoever.



3 BEDROOM APARTMENT  
TYPE F (with maid room + yard) VARIANT 1

TOTAL SALEABLE AREA  
SUITE = 1,517.07 SQ.FT.  
YARD = 363.93 SQ.FT.  
TOTAL = 1,881.00 SQ.FT.

UNIT



List of unit numbers with this unit plan:

VIEWS

Downtown, Ras Al Khor, Golf Course, Amenities, Creek, Water Body  
B708, B1908

Downtown, Ras Al Khor, Golf Course, Water Body, Creek  
B3108

Downtown, Ras Al Khor, Golf Course, Creek  
B4308

Disclaimer: 1. All dimensions are in metric, measured to wall finishes. 2. All materials, dimensions & drawings are approximate. 3. Information is subject to change without notice, at developer's absolute discretion. 4. Actual area may vary from the stated area. 5. Drawing are not to scale. 6. All images used are for illustrative purpose only and do not represent the actual size, features, specifications, fittings and furnishings. 7. The developer reserves the right to make revisions/ alterations, at its absolute discretion, without any liability whatsoever.