



SOBHA ONE

SOBHA
REALTY



ONE

THE JOURNEY BEGINS

ONE that brings you
closer to nature



A place where you can take
one day at a time



ONE

BE ONESELF

It's one of a kind, like you



One where the world is
close yet far away

THE POWER OF ONE



*When imagination and vision
come together Life meets style.*

City and nature hum together,
Work & play find a balance and become One

A large flock of swans is captured in flight over a body of water during sunset. The sky is a deep, warm orange, and the water reflects the light. The swans are silhouetted against the bright sky, creating a sense of movement and grace.

ONE WAY: YOUR WAY

The best places are hidden in plain sight

Near the vital Ras Al Khor Road, Sobha One is a little world tucked away. Look to the north at the calming waters of the Creek as they look back. Further north in the skyline with panoramic views of The Burj Khalifa, Creek Tower to the Northeast and Downtown to the West.



ARRIVE & DEPART WITH GRACE

Sobha One is right near two new interchanges on Ras Al Khor Road. So, getting home has never been faster. With exits in both the West and East, a new planned metro line behind Sobha One, soar where you need to be on your terms.





LIVING BY THE WATER

Imagine waking up each morning next to serene water. The sun glints off the water, casting a sparkling path across the ripples. A light breeze blows, rustling the leaves of the nearby trees.

It's yours to stroll down the pathway or sit peacefully watching the calm waters. Go on, spend lazy weekends lounging near the water, reading, and soaking up the sun.



ONE POINT OF VIEW: YOURS

With a canvas spread over 1.5 million square feet, its breathtaking views as far as your eye can see. Look around to views of Golf Course, calm water, iconic Burj Khalifa & Downtown. Every glance sets a different mood.



ONE

SPACE

Sobha One spreads its tapestry over five interlinked towers. Rising from 30 stories tall and hitting a crescendo of 65 stories, it's one note after another that sings in chorus with the skyline

With 1 to 4 bedroom apartments & 2 to 4 bedroom Duplex, it's a world of its own.



ONE FOR ALL ALL FOR ONE



*Life is too short to settle for anything less than
the best. At Sobha One, luxury living is a
natural choice.*

TEE OFF IN STYLE

The first of its kind in Dubai, a world class Pitch and Putt golf course featuring 18 holes of golf, each meticulously designed.

It is the perfect way to unwind after a long day at work. After all, there's nothing like sinking a long putt on a sun-drenched fairway. The clubhouse is appointed with upscale amenities and a patio overlooking the greens.



DINE BY THE WATERS

The food & beverage esplanade that borders the calm waters is also a feast for the palate to suit every taste and time.

Spread over almost half a kilometer, it offers fine restaurants for an intimate dinner, quick catch-up over a cup of coffee, or a power lunch.



SKY GARDEN

Rise high above and look at the stars. Soak in the stunning views of the city. Catch the sun rays when they rise and set. Do it all from the magnificent panoramic sky terrace in each tower



COURTYARD FOR THE SENSES



All the 5 Towers at Sobha One have interconnected four themed courtyards. As private outdoor retreats, these lush, landscaped spaces add to the overall aesthetic.

RELAX

In a fast-paced world, finding ways to relax is more important than ever. Take a leisurely stroll through the tree avenues, do yoga on the group decks, or stroll in the gardens. And when you need to refuel, enjoy a meal at the BBQ & dining areas or catch a movie under the stars on our cinema screen. There is something for everyone





REMEMBER

The family courtyard is a great way to spend quality time together. You can pack a picnic lunch and enjoy the beautiful weather. Or spending a day cooling off in the water, splashing with the little ones. So, come on down and make memories with your loved ones!





RECHARGE

We believe that fitness should be fun! That's why we've created a unique courtyard that combines the best of gyms with exciting new indoor and outdoor features from static bikes, treadmills, circuit training areas and battle ropes. So sweat it out and be the best version of yourself.

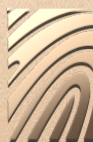




REFRESH

This themed courtyard is the way to do just that after a long day. Step into the pool area, and the stress of daily life melts away. Feel your muscles loosening and your mind clearing as you swim laps. Close your eyes and let the warm sun wash over you, lulling you into a state of relaxation.





SOBHA ONE



FLEXIBLE PAYMENT PLAN

60%

During Construction

40%

On Completion

Grand 1 to 4 Bedroom apartments

ONE

awaits you...

LOCATION MAP



RAS AL KHOR
WILDLIFE SANCTUARY
05 MINUTES



MEYDAN
RACE COURSE
10 MINUTES



SOBHA HARTLAND &
2 INTERNATIONAL SCHOOLS
10 MINUTES



DUBAI INTERNATIONAL
AIRPORT
12 MINUTES



BUSINESS BAY
12 MINUTES



THE DUBAI MALL
15 MINUTES



BURJ KHALIFA &
DOWNTOWN DUBAI
15 MINUTES



DUBAI FRAME
15 MINUTES

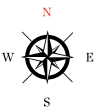


DUBAI OPERA
15 MINUTES

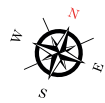
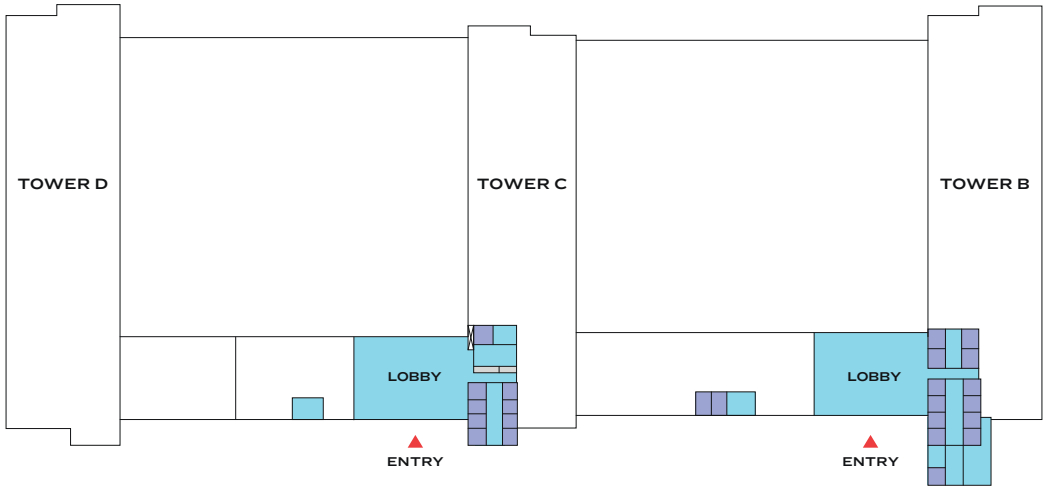


PALM JUMEIRAH
25 MINUTES

MASTER PLAN



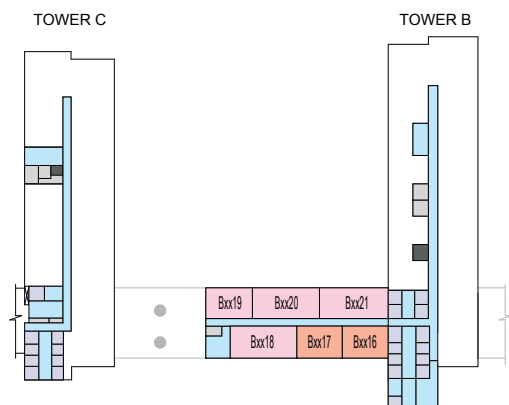
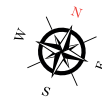
GROUND FLOOR



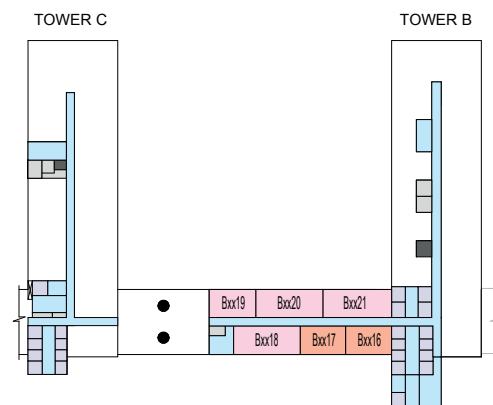
TOWER B & C
FLOOR PLAN LAYOUTS
(LINK UNITS)

FLOOR PLAN LAYOUT

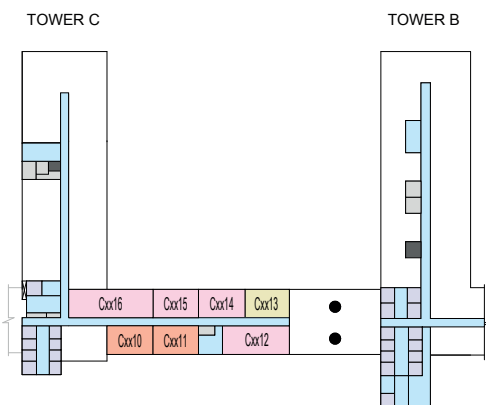
TOWER B & C (LINK UNITS)



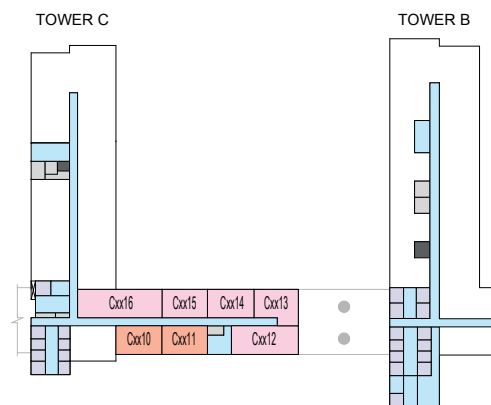
LEVEL 07-11,19-23,31-35



LEVEL 18,30



LEVEL 12,24



LEVEL 13-17,25-29

 1 BED UNIT	 2 BED UNIT	 LOBBIES, CORRIDORS & STAIRS	 LIFTS
 1.5 BED UNIT	 SERVICES	 GARBAGE ROOM	

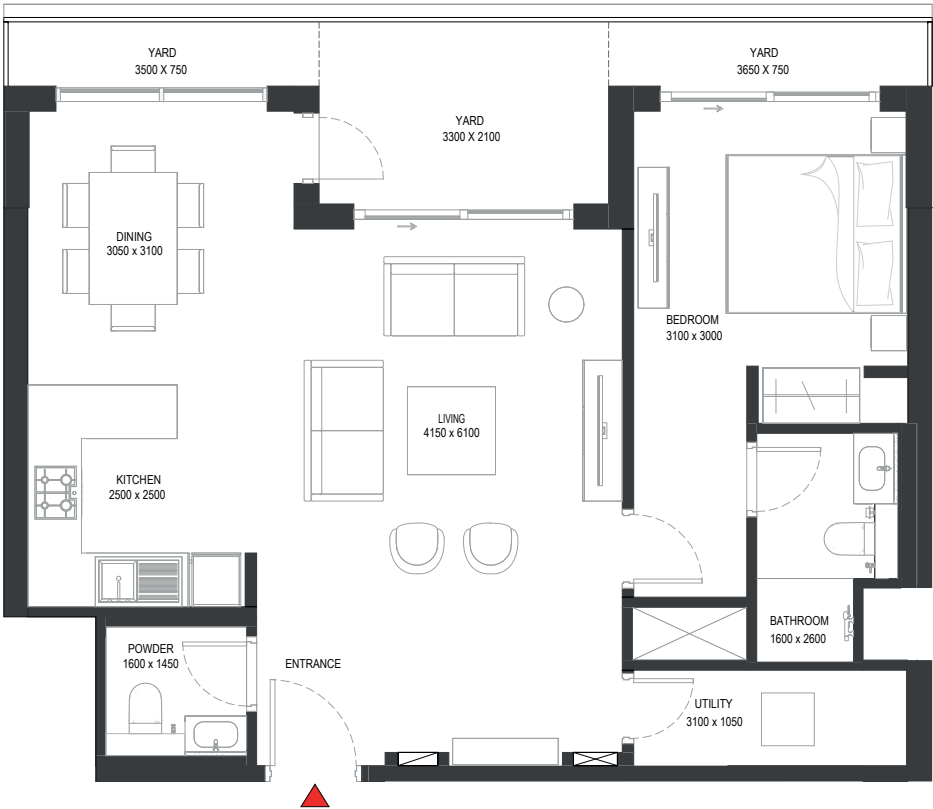
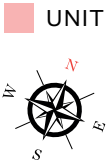
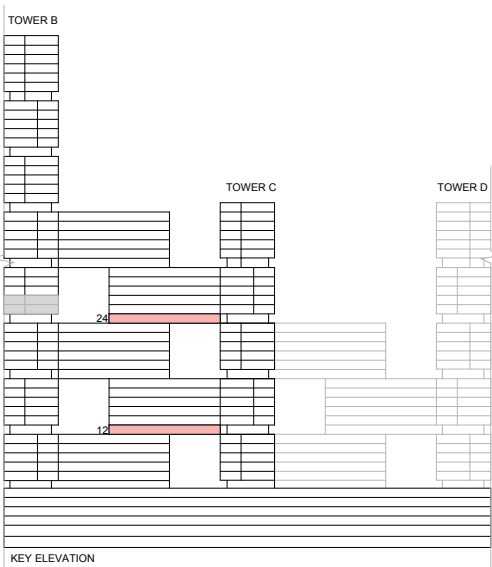
Disclaimer: 1. All dimensions are in metric, measured to wall finishes. 2. All materials, dimensions & drawings are approximate. 3. Information is subject to change without notice, at developer's absolute discretion. 4. Actual area may vary from the stated area. 5. Drawing are not to scale. 6. All images used are for illustrative purpose only and do not represent the actual size, features, specifications, fittings and furnishings. 7. The developer reserves the right to make revisions/ alterations, at its absolute discretion, without any liability whatsoever.

TOWER B & C

UNIT PLAN LAYOUTS
(LINK UNITS)

1 BEDROOM LINK APARTMENT
TYPE A (with powder room + yard)

TOTAL SALEABLE AREA
SUITE = 780.49 SQ.FT.
YARD = 148.11 SQ.FT.
TOTAL = 928.60 SQ.FT.



List of unit numbers with this unit plan:

VIEWS

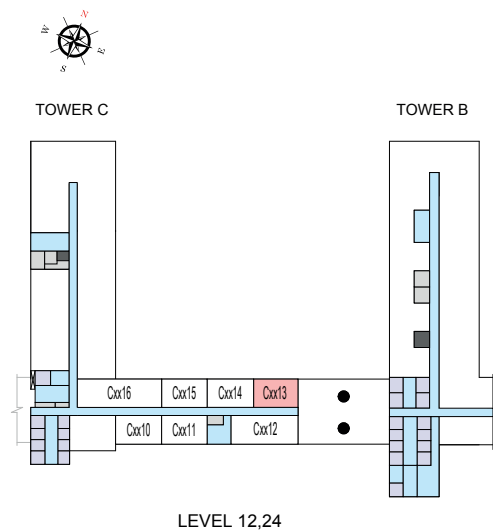
Ras Al Khor, Golf Course, Creek, Amenities
C1213, C2413

Disclaimer: 1. All dimensions are in metric, measured to wall finishes. 2. All materials, dimensions & drawings are approximate. 3. Information is subject to change without notice, at developer's absolute discretion. 4. Actual area may vary from the stated area. 5. Drawing are not to scale. 6. All images used are for illustrative purpose only and do not represent the actual size, features, specifications, fittings and furnishings. 7. The developer reserves the right to make revisions/ alterations, at its absolute discretion, without any liability whatsoever.

1 BEDROOM LINK APARTMENT
TYPE A (with powder room + yard)

TOTAL SALEABLE AREA
SUITE = 780.49 SQ.FT.
YARD = 148.11 SQ.FT.
TOTAL = 928.60 SQ.FT.

UNIT



List of unit numbers with this unit plan:

VIEWS

Ras Al Khor, Golf Course, Creek, Amenities
C1213, C2413

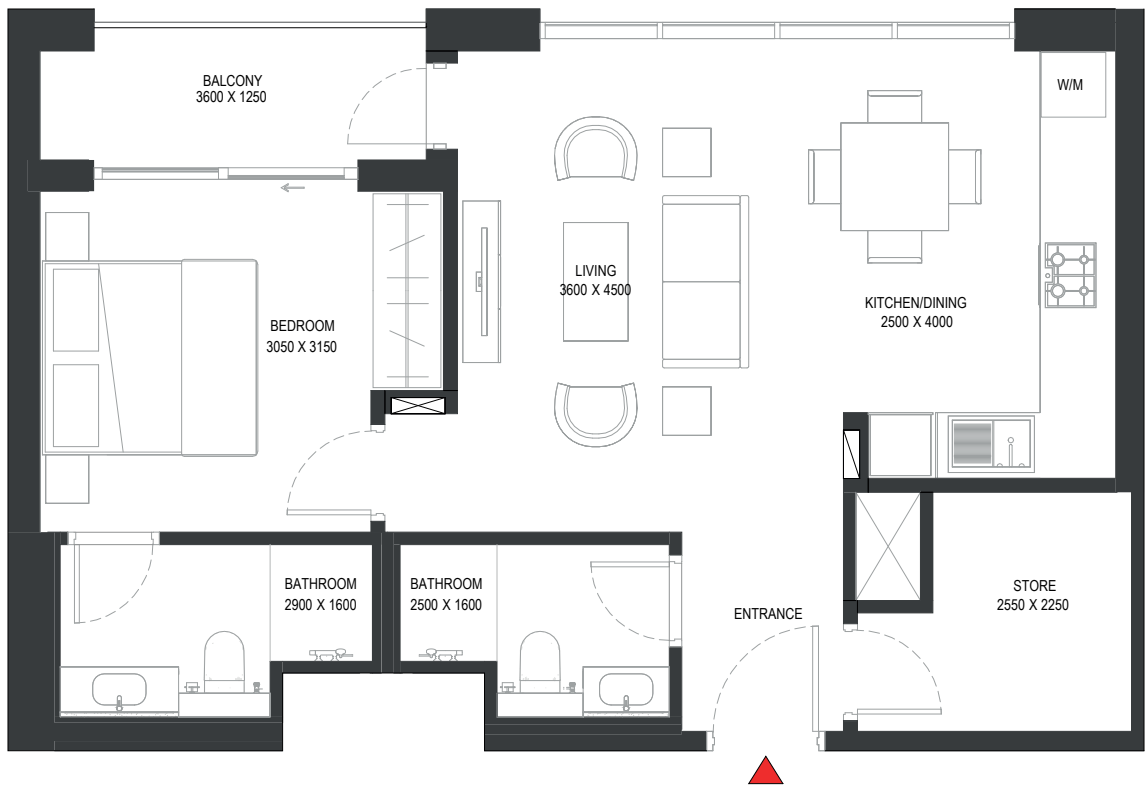
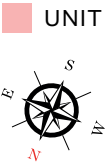
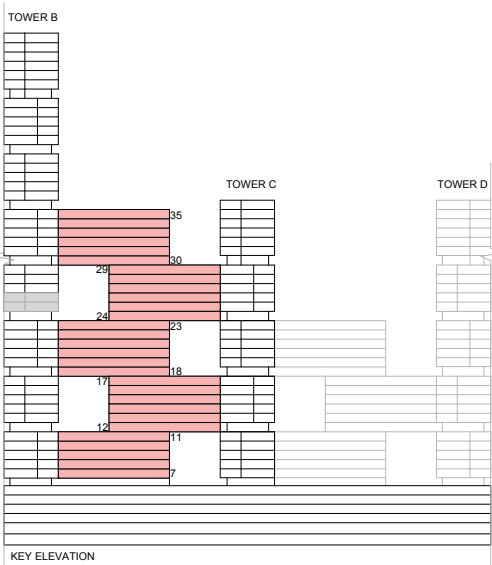
Disclaimer: 1. All dimensions are in metric, measured to wall finishes. 2. All materials, dimensions & drawings are approximate. 3. Information is subject to change without notice, at developer's absolute discretion. 4. Actual area may vary from the stated area. 5. Drawing are not to scale. 6. All images used are for illustrative purpose only and do not represent the actual size, features, specifications, fittings and furnishings. 7. The developer reserves the right to make revisions/ alterations, at its absolute discretion, without any liability whatsoever.

1.5 BEDROOM LINK APARTMENT

TYPE A (with store room + balcony)

TOTAL SALEABLE AREA

SUITE RANGE = 666.39 - 674.90 SQ.FT.
BALCONY RANGE = 58.99 - 61.14 SQ.FT.
TOTAL RANGE = 725.38 - 736.04 SQ.FT.



List of unit numbers with this unit plan:

VIEWS

City View

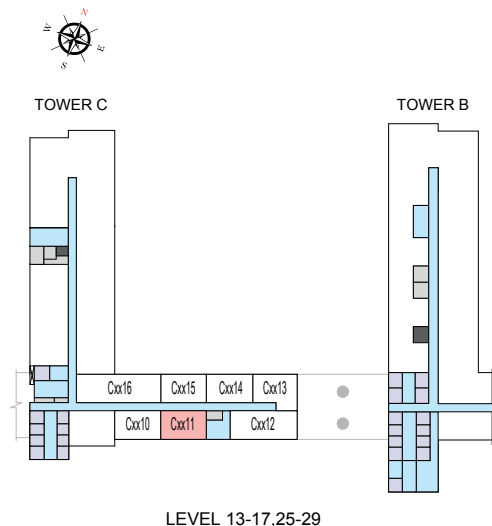
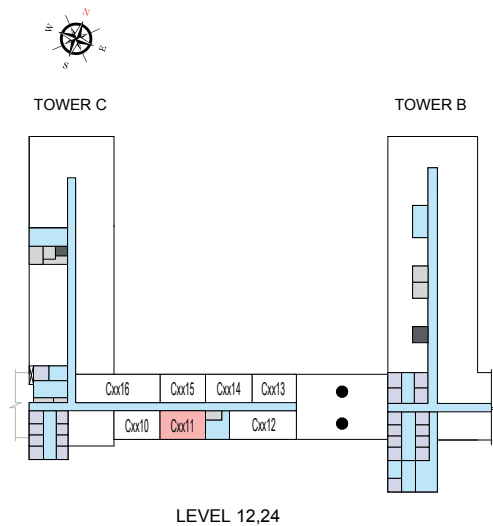
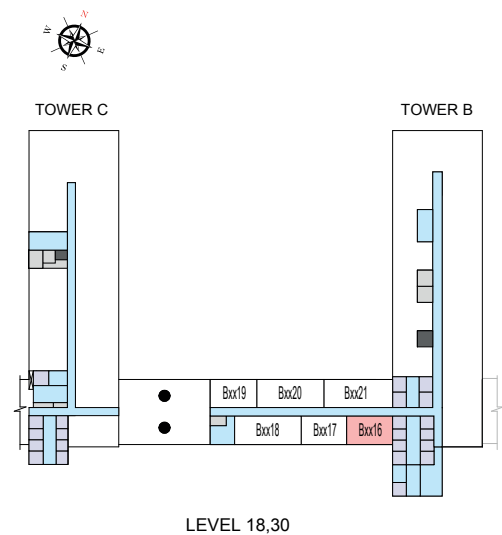
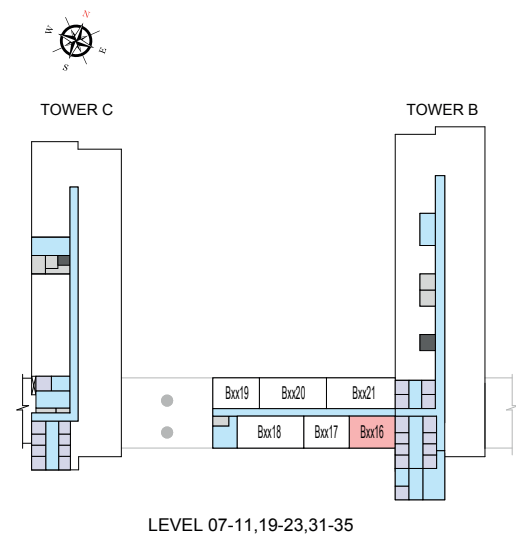
B716, B816, B916, B1016, B1116, B1816, B1916, B2016, B2116, B2216, B2316, B3016, B3116, B3216, B3316, B3416, B3516, C1211, C1311, C1411, C1511, C1611, C1711, C2411, C2511, C2611, C2711, C2811, C2911

Disclaimer: 1. All dimensions are in metric, measured to wall finishes. 2. All materials, dimensions & drawings are approximate. 3. Information is subject to change without notice, at developer's absolute discretion. 4. Actual area may vary from the stated area. 5. Drawing are not to scale. 6. All images used are for illustrative purpose only and do not represent the actual size, features, specifications, fittings and furnishings. 7. The developer reserves the right to make revisions/ alterations, at its absolute discretion, without any liability whatsoever.

1.5 BEDROOM LINK APARTMENT
TYPE A (with store room + balcony)

TOTAL SALEABLE AREA
SUITE RANGE = 666.39 - 674.90 SQ.FT.
BALCONY RANGE = 58.99 - 61.14 SQ.FT.
TOTAL RANGE = 725.38 - 736.04 SQ.FT.

UNIT



List of unit numbers with this unit plan:

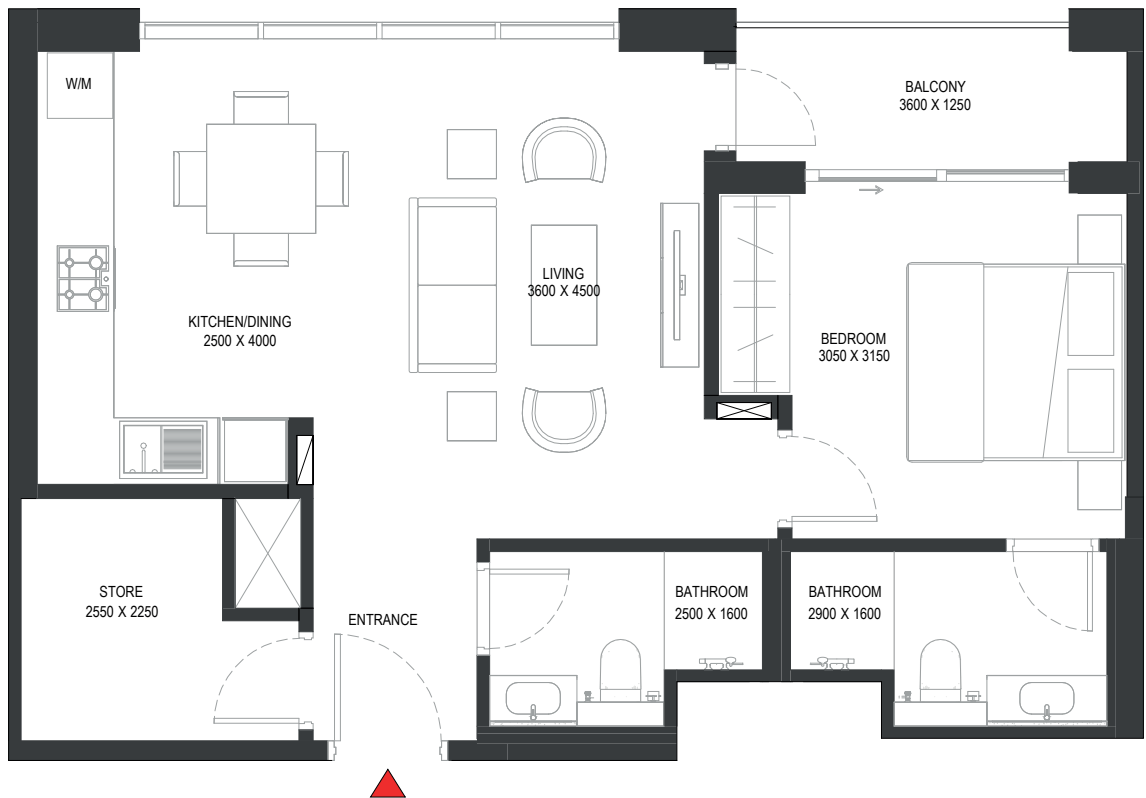
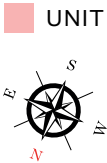
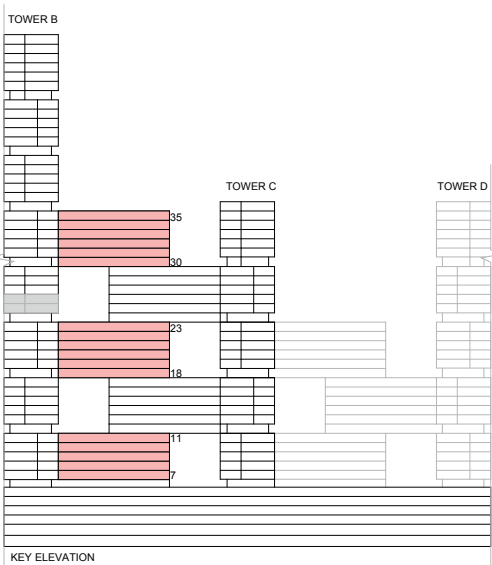
VIEWS

City View
B716, B816, B916, B1016, B1116, B1816, B1916, B2016, B2116, B2216, B2316, B3016, B3116, B3216, B3316, B3416, B3516, C1211, C1311, C1411, C1511, C1611, C1711, C2411, C2511, C2611, C2711, C2811, C2911

Disclaimer: 1. All dimensions are in metric, measured to wall finishes. 2. All materials, dimensions & drawings are approximate. 3. Information is subject to change without notice, at developer's absolute discretion. 4. Actual area may vary from the stated area. 5. Drawing are not to scale. 6. All images used are for illustrative purpose only and do not represent the actual size, features, specifications, fittings and furnishings. 7. The developer reserves the right to make revisions/ alterations, at its absolute discretion, without any liability whatsoever.

1.5 BEDROOM LINK APARTMENT
TYPE A (with store room + balcony) VARIANT 1

TOTAL SALEABLE AREA
SUITE = 666.39 SQ.FT.
BALCONY = 58.99 SQ.FT.
TOTAL = 725.38 SQ.FT.



List of unit numbers with this unit plan:

VIEWS

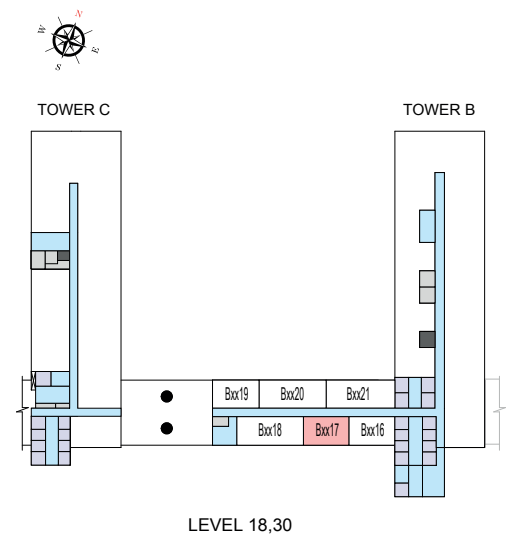
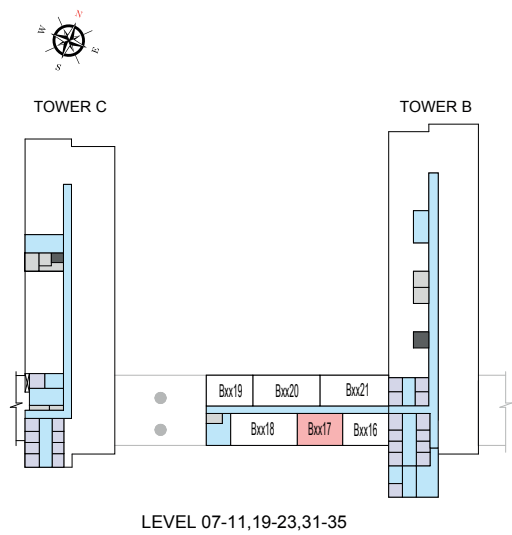
City View
B717, B817, B917, B1017, B1117, B1817, B1917, B2017, B2117, B2217, B2317, B3017, B3117, B3217, B3317, B3417, B3517

Disclaimer: 1. All dimensions are in metric, measured to wall finishes. 2. All materials, dimensions & drawings are approximate. 3. Information is subject to change without notice, at developer's absolute discretion. 4. Actual area may vary from the stated area. 5. Drawing are not to scale. 6. All images used are for illustrative purpose only and do not represent the actual size, features, specifications, fittings and furnishings. 7. The developer reserves the right to make revisions/ alterations, at its absolute discretion, without any liability whatsoever.

1.5 BEDROOM LINK APARTMENT
TYPE A (with store room + balcony) VARIANT 1

TOTAL SALEABLE AREA
SUITE = 666.39 SQ.FT.
BALCONY = 58.99 SQ.FT.
TOTAL = 725.38 SQ.FT.

UNIT



List of unit numbers with this unit plan:

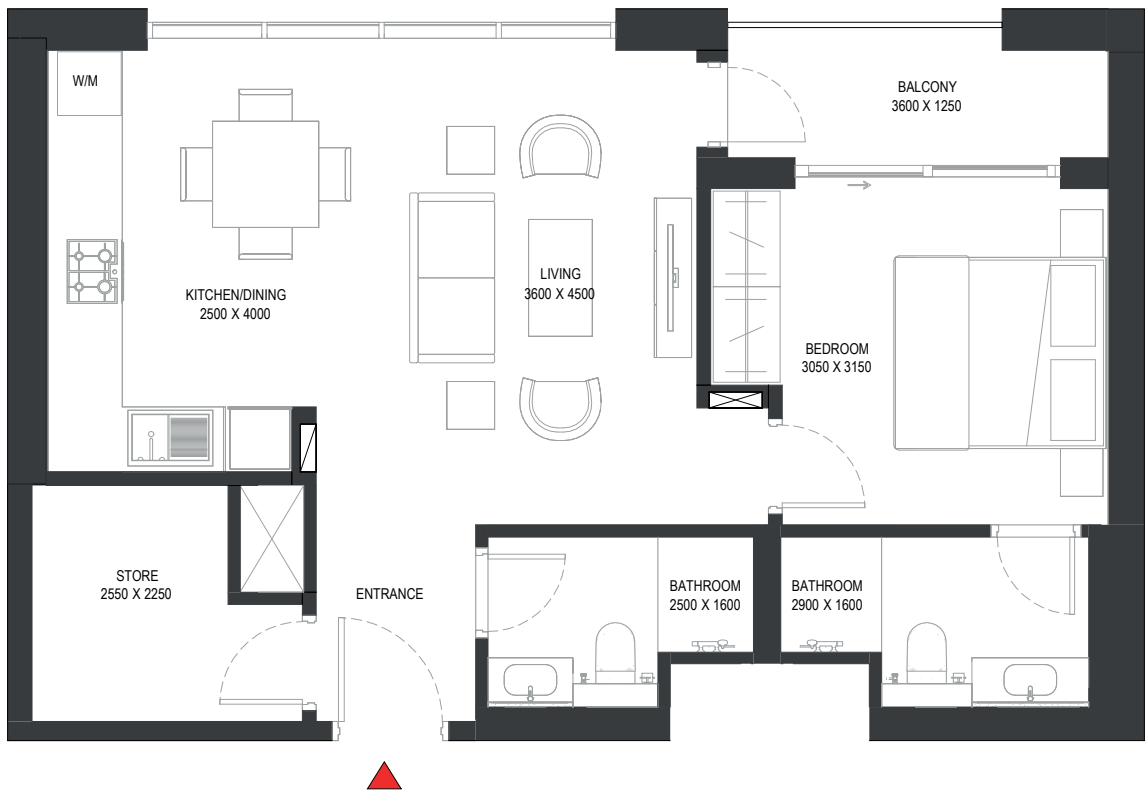
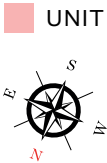
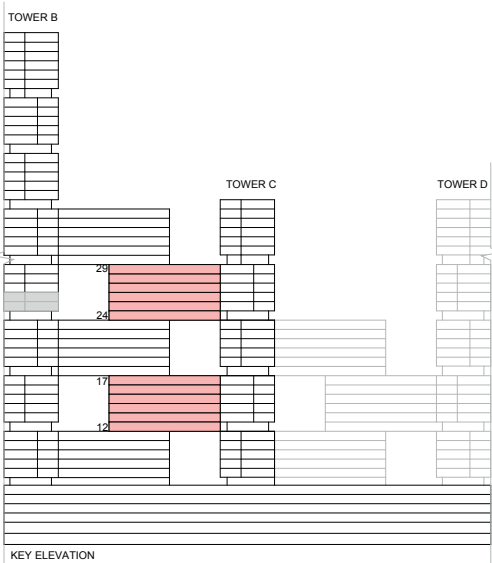
VIEWS

City View
B717, B817, B917, B1017, B1117, B1817, B1917, B2017, B2117, B2217, B2317, B3017, B3117, B3217, B3317, B3417, B3517

Disclaimer: 1. All dimensions are in metric, measured to wall finishes. 2. All materials, dimensions & drawings are approximate. 3. Information is subject to change without notice, at developer's absolute discretion. 4. Actual area may vary from the stated area. 5. Drawing are not to scale. 6. All images used are for illustrative purpose only and do not represent the actual size, features, specifications, fittings and furnishings. 7. The developer reserves the right to make revisions/ alterations, at its absolute discretion, without any liability whatsoever.

1.5 BEDROOM LINK APARTMENT
TYPE A (with store room + balcony) VARIANT 2

TOTAL SALEABLE AREA
SUITE = 666.39 SQ.FT.
BALCONY = 58.45 SQ.FT.
TOTAL = 724.84 SQ.FT.



List of unit numbers with this unit plan:

VIEWS

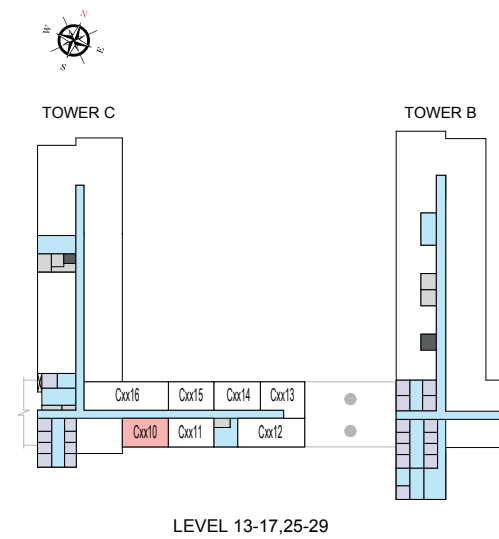
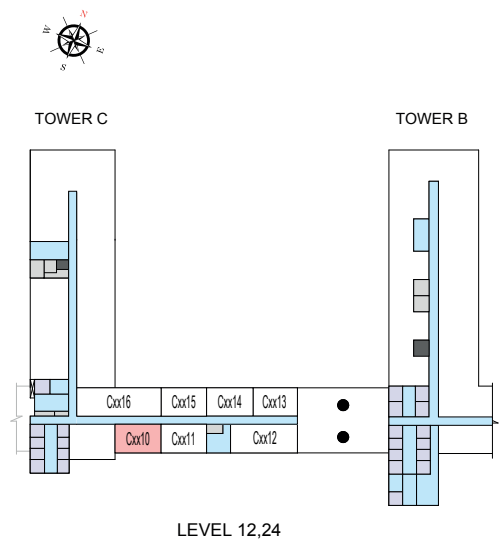
City View
C1210, C1310, C1410, C1510, C1610, C1710, C2410, C2510, C2610, C2710, C2810, C2910

Disclaimer: 1. All dimensions are in metric, measured to wall finishes. 2. All materials, dimensions & drawings are approximate. 3. Information is subject to change without notice, at developer's absolute discretion. 4. Actual area may vary from the stated area. 5. Drawing are not to scale. 6. All images used are for illustrative purpose only and do not represent the actual size, features, specifications, fittings and furnishings. 7. The developer reserves the right to make revisions/ alterations, at its absolute discretion, without any liability whatsoever.

1.5 BEDROOM LINK APARTMENT
TYPE A (with store room + balcony) VARIANT 2

TOTAL SALEABLE AREA
SUITE = 666.39 SQ.FT.
BALCONY = 58.45 SQ.FT.
TOTAL = 724.84 SQ.FT.

UNIT



List of unit numbers with this unit plan:

VIEWS

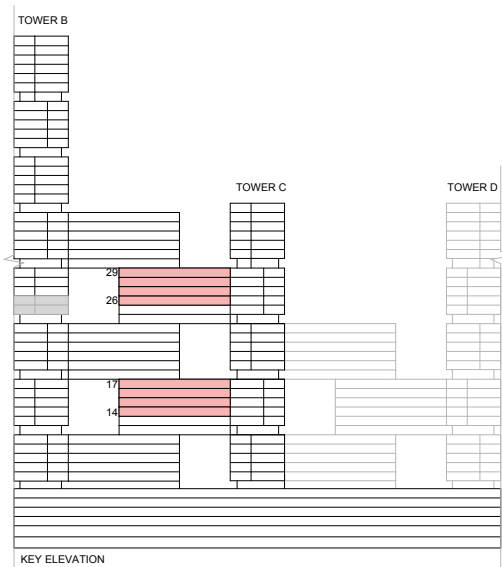
City View
C1210, C1310, C1410, C1510, C1610, C1710, C2410, C2510, C2610, C2710, C2810, C2910

Disclaimer: 1. All dimensions are in metric, measured to wall finishes. 2. All materials, dimensions & drawings are approximate. 3. Information is subject to change without notice, at developer's absolute discretion. 4. Actual area may vary from the stated area. 5. Drawing are not to scale. 6. All images used are for illustrative purpose only and do not represent the actual size, features, specifications, fittings and furnishings. 7. The developer reserves the right to make revisions/ alterations, at its absolute discretion, without any liability whatsoever.

2 BEDROOM LINK APARTMENT

TYPE A (with powder room + balcony)

TOTAL SALEABLE AREA
 SUITE = 915.79 SQ.FT.
 BALCONY = 54.79 SQ.FT.
 TOTAL = 970.58 SQ.FT.



List of unit numbers with this unit plan:

VIEWS

Ras Al Khor, Golf Course, Creek, Amenities
 C1413, C1513, C1613, C1713

Ras Al Khor, Golf Course, Creek
 C2613, C2713, C2813, C2913

Disclaimer: 1. All dimensions are in metric, measured to wall finishes. 2. All materials, dimensions & drawings are approximate. 3. Information is subject to change without notice, at developer's absolute discretion. 4. Actual area may vary from the stated area. 5. Drawing are not to scale. 6. All images used are for illustrative purpose only and do not represent the actual size, features, specifications, fittings and furnishings. 7. The developer reserves the right to make revisions/ alterations, at its absolute discretion, without any liability whatsoever.

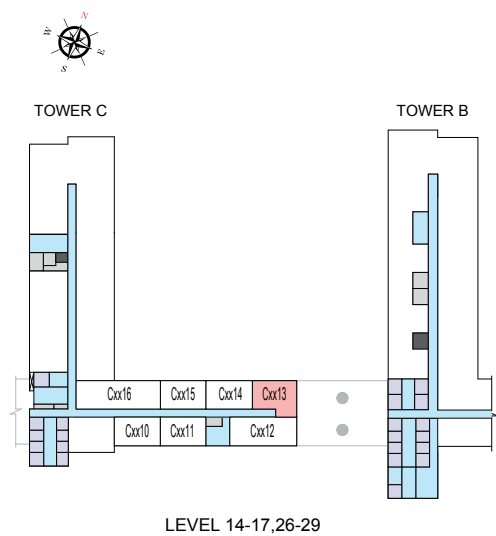
2 BEDROOM LINK APARTMENT

TYPE A (with powder room + balcony)

TOTAL SALEABLE AREA

SUITE = 915.79 SQ.FT.
BALCONY = 54.79 SQ.FT.
TOTAL = 970.58 SQ.FT.

 UNIT



LEVEL 14-17,26-29

List of unit numbers with this unit plan:

VIEWS

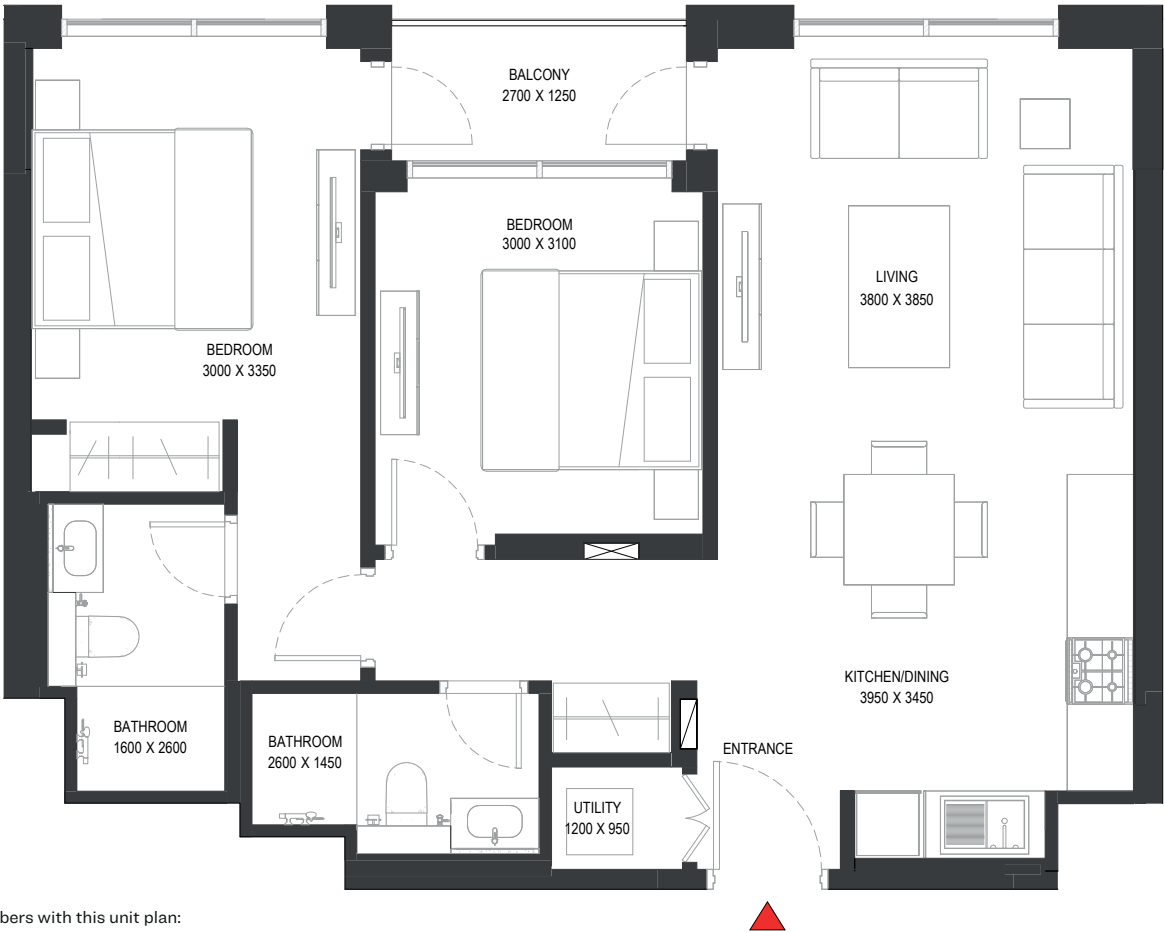
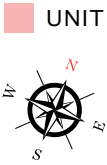
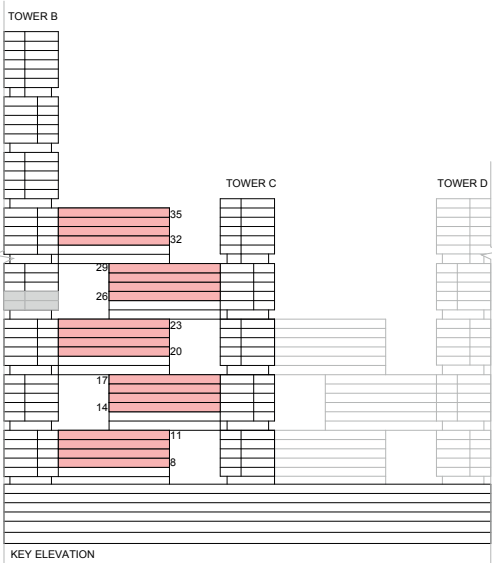
Ras Al Khor, Golf Course, Creek, Amenities
C1413, C1513, C1613, C1713

Ras Al Khor, Golf Course, Creek
C2613, C2713, C2813, C2913

Disclaimer: 1. All dimensions are in metric, measured to wall finishes. 2. All materials, dimensions & drawings are approximate. 3. Information is subject to change without notice, at developer's absolute discretion. 4. Actual area may vary from the stated area. 5. Drawing are not to scale. 6. All images used are for illustrative purpose only and do not represent the actual size, features, specifications, fittings and furnishings. 7. The developer reserves the right to make revisions/ alterations, at its absolute discretion, without any liability whatsoever.

2 BEDROOM LINK APARTMENT
TYPE B (with balcony)

TOTAL SALEABLE AREA
SUITE = 803.31 SQ.FT.
BALCONY = 44.13 SQ.FT.
TOTAL = 847.44 SQ.FT.



List of unit numbers with this unit plan:

VIEWS

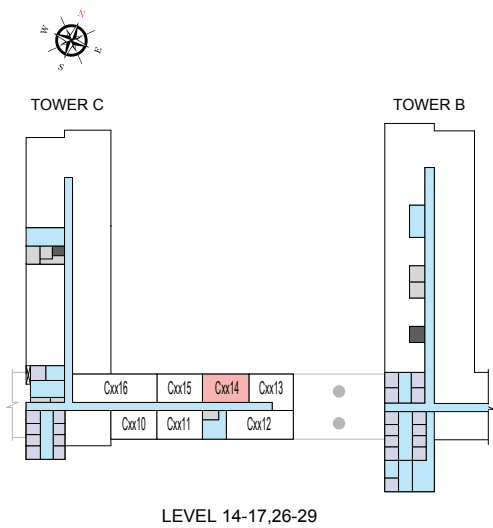
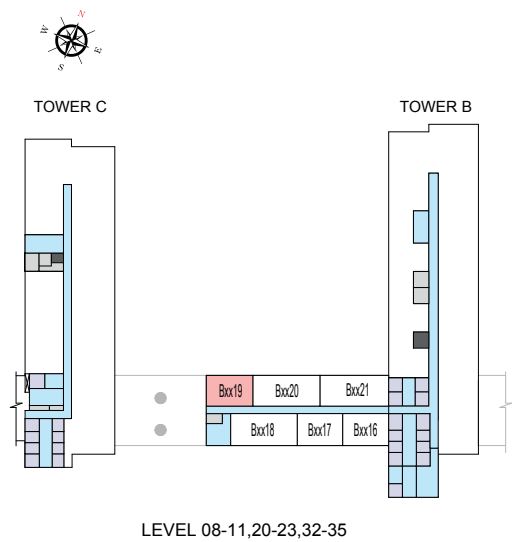
- Ras Al Khor, Creek, Amenities
B819, B919
- Ras Al Khor, Golf Course, Creek, Amenities
B1019, B1119, C1414, C1514, C1614, C1714, B2019, B2119, B2219, B2319
- Ras Al Khor, Golf Course, Creek
C2614, C2714, C2814, C2914, B3219, B3319, B3419, B3519

Disclaimer: 1. All dimensions are in metric, measured to wall finishes. 2. All materials, dimensions & drawings are approximate. 3. Information is subject to change without notice, at developer's absolute discretion. 4. Actual area may vary from the stated area. 5. Drawing are not to scale. 6. All images used are for illustrative purpose only and do not represent the actual size, features, specifications, fittings and furnishings. 7. The developer reserves the right to make revisions/ alterations, at its absolute discretion, without any liability whatsoever.

2 BEDROOM LINK APARTMENT
TYPE B (with balcony)

TOTAL SALEABLE AREA
SUITE = 803.31 SQ.FT.
BALCONY = 44.13 SQ.FT.
TOTAL = 847.44 SQ.FT.

UNIT



List of unit numbers with this unit plan:

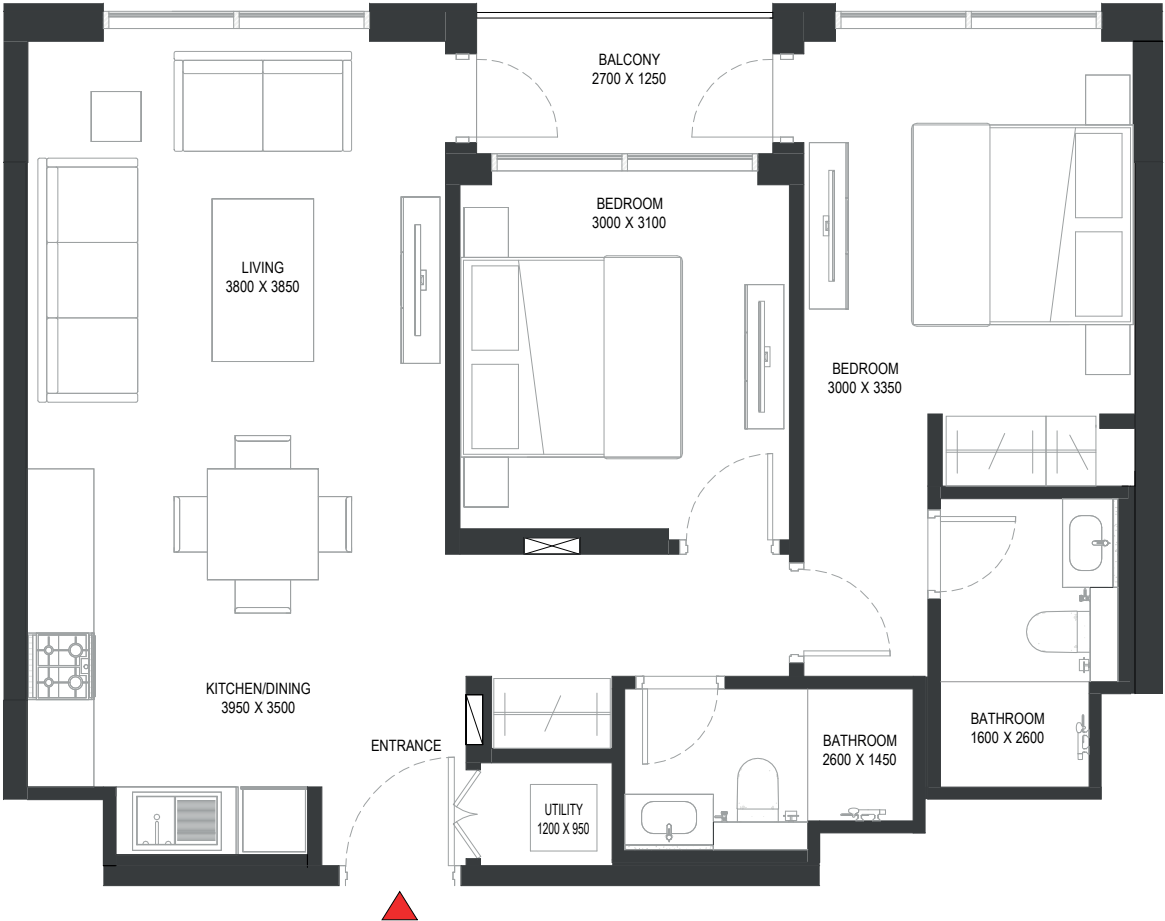
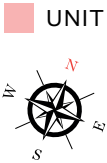
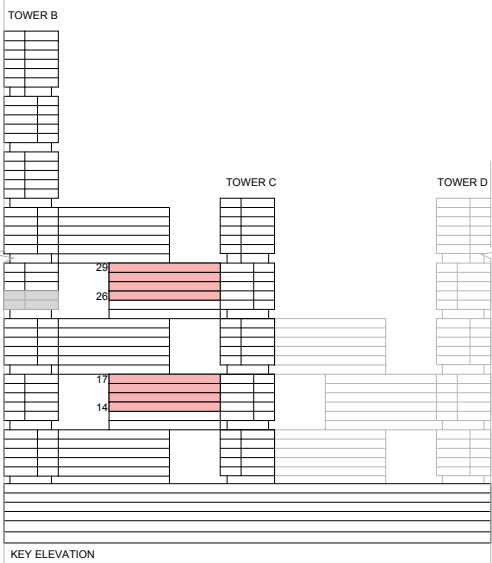
VIEWS

- Ras Al Khor, Creek, Amenities
B819, B919
- Ras Al Khor, Golf Course, Creek, Amenities
B1019, B1119, C1414, C1514, C1614, C1714, B2019, B2119, B2219, B2319
- Ras Al Khor, Golf Course, Creek
C2614, C2714, C2814, C2914, B3219, B3319, B3419, B3519

Disclaimer: 1. All dimensions are in metric, measured to wall finishes. 2. All materials, dimensions & drawings are approximate. 3. Information is subject to change without notice, at developer's absolute discretion. 4. Actual area may vary from the stated area. 5. Drawing are not to scale. 6. All images used are for illustrative purpose only and do not represent the actual size, features, specifications, fittings and furnishings. 7. The developer reserves the right to make revisions/ alterations, at its absolute discretion, without any liability whatsoever.

2 BEDROOM LINK APARTMENT
TYPE B (with balcony) VARIANT 1

TOTAL SALEABLE AREA
SUITE = 803.31 SQ.FT.
BALCONY = 44.13 SQ.FT.
TOTAL = 847.44 SQ.FT.



List of unit numbers with this unit plan:

VIEWS

Golf Course, Creek, Amenities
C1415, C1515, C1615, C1715

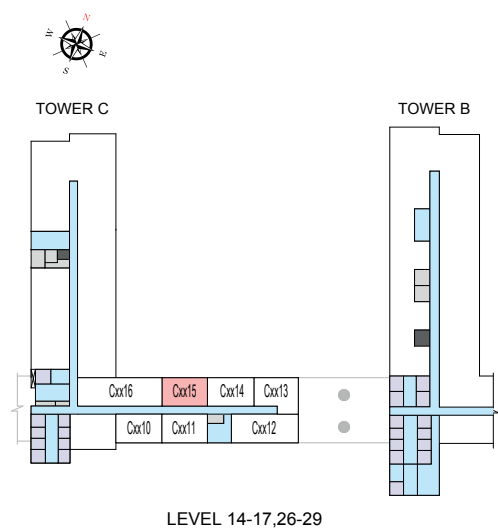
Golf Course, Creek
C2615, C2715, C2815, C2915

Disclaimer: 1. All dimensions are in metric, measured to wall finishes. 2. All materials, dimensions & drawings are approximate. 3. Information is subject to change without notice, at developer's absolute discretion. 4. Actual area may vary from the stated area. 5. Drawing are not to scale. 6. All images used are for illustrative purpose only and do not represent the actual size, features, specifications, fittings and furnishings. 7. The developer reserves the right to make revisions/ alterations, at its absolute discretion, without any liability whatsoever.

2 BEDROOM LINK APARTMENT
TYPE B (with balcony) VARIANT 1

TOTAL SALEABLE AREA
SUITE = 803.31 SQ.FT.
BALCONY = 44.13 SQ.FT.
TOTAL = 847.44 SQ.FT.

UNIT



List of unit numbers with this unit plan:

VIEWS

Golf Course, Creek, Amenities
C1415, C1515, C1615, C1715

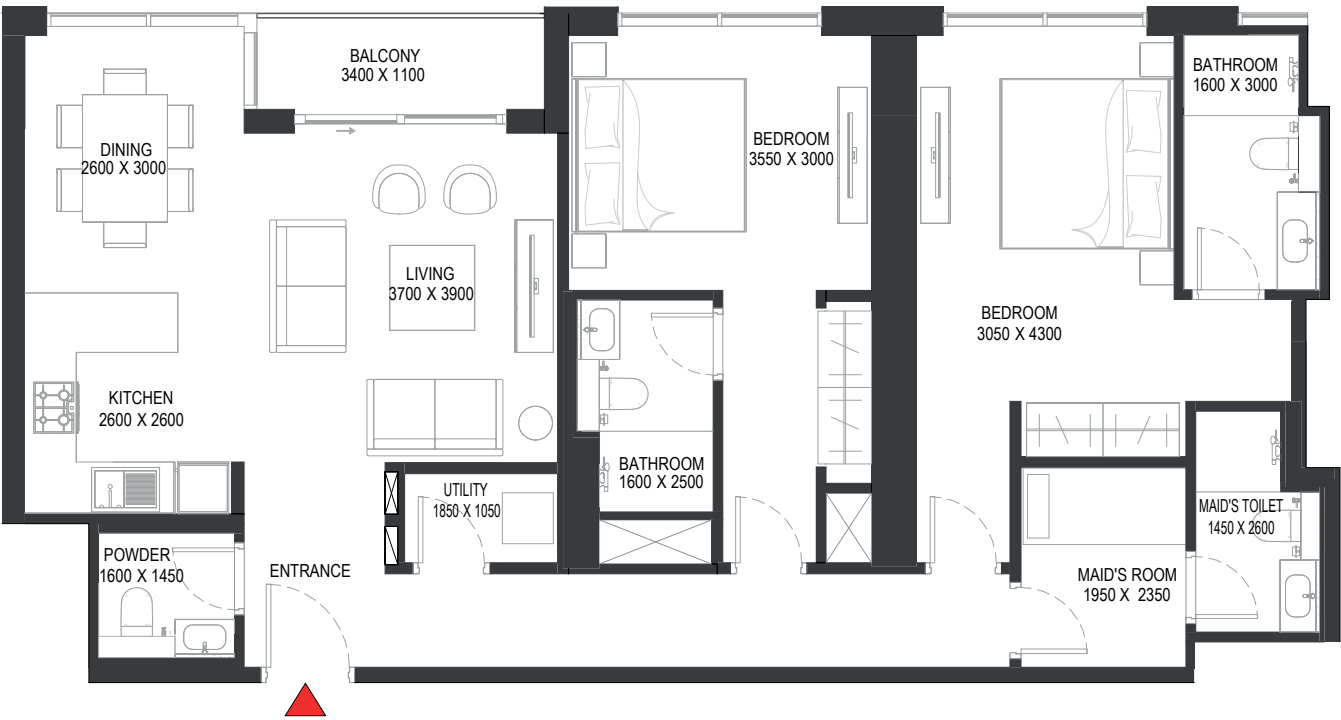
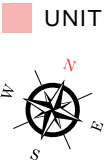
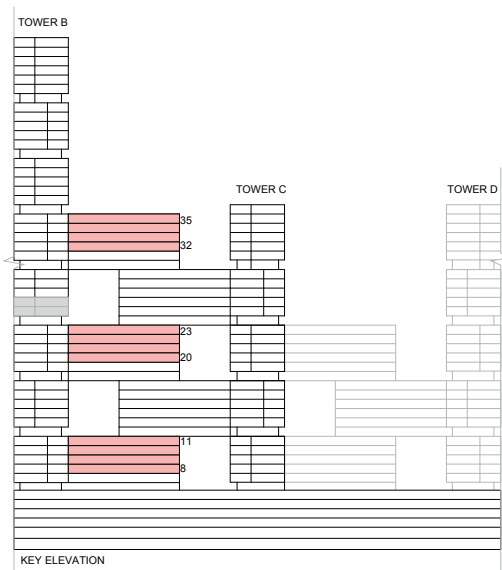
Golf Course, Creek
C2615, C2715, C2815, C2915

Disclaimer: 1. All dimensions are in metric, measured to wall finishes. 2. All materials, dimensions & drawings are approximate. 3. Information is subject to change without notice, at developer's absolute discretion. 4. Actual area may vary from the stated area. 5. Drawing are not to scale. 6. All images used are for illustrative purpose only and do not represent the actual size, features, specifications, fittings and furnishings. 7. The developer reserves the right to make revisions/ alterations, at its absolute discretion, without any liability whatsoever.

2 BEDROOM LINK APARTMENT

TYPE D (with maid room, powder room + balcony)

TOTAL SALEABLE AREA
 SUITE = 1,204.91 SQ.FT.
 BALCONY = 47.47 SQ.FT.
 TOTAL = 1,252.38 SQ.FT.



List of unit numbers with this unit plan:

VIEWS

Ras Al Khor, Creek, Amenities
 B820, B920

Ras Al Khor, Golf Course, Creek, Amenities
 B1020, B1120, B2020, B2120, B2220, B2320

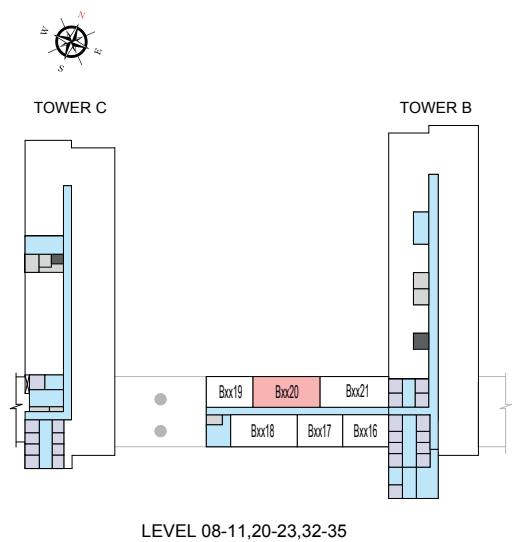
Ras Al Khor, Golf Course, Creek
 B3220, B3320, B3420, B3520

Disclaimer: 1. All dimensions are in metric, measured to wall finishes. 2. All materials, dimensions & drawings are approximate. 3. Information is subject to change without notice, at developer's absolute discretion. 4. Actual area may vary from the stated area. 5. Drawing are not to scale. 6. All images used are for illustrative purpose only and do not represent the actual size, features, specifications, fittings and furnishings. 7. The developer reserves the right to make revisions/ alterations, at its absolute discretion, without any liability whatsoever.

2 BEDROOM LINK APARTMENT
TYPE D (with maid room, powder room + balcony)

TOTAL SALEABLE AREA
SUITE = 1,204.91 SQ.FT.
BALCONY = 47.47 SQ.FT.
TOTAL = 1,252.38 SQ.FT.

UNIT



List of unit numbers with this unit plan:

VIEWS

Ras Al Khor, Creek, Amenities
B820, B920

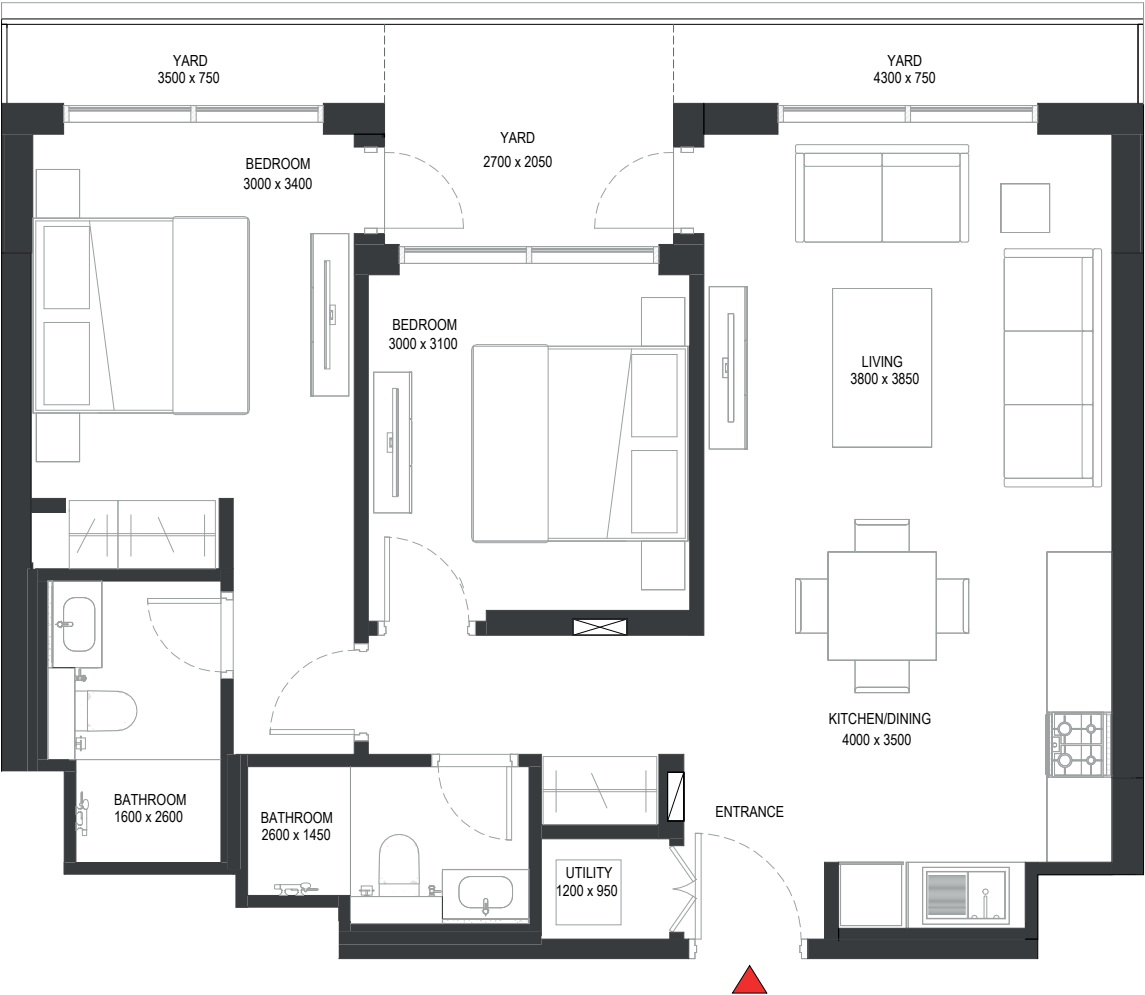
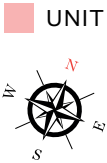
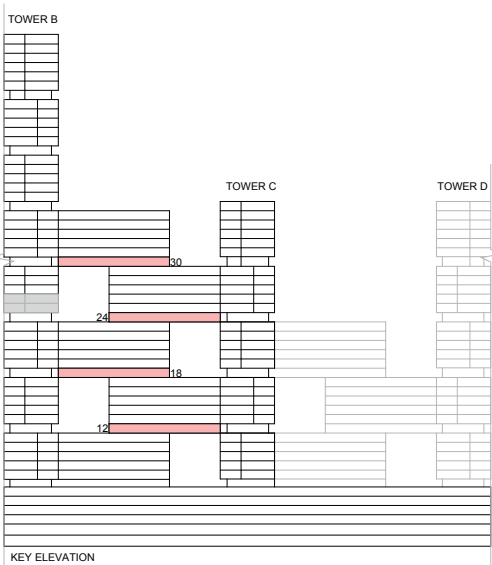
Ras Al Khor, Golf Course, Creek, Amenities
B1020, B1120, B2020, B2120, B2220, B2320

Ras Al Khor, Golf Course, Creek
B3220, B3320, B3420, B3520

Disclaimer: 1. All dimensions are in metric, measured to wall finishes. 2. All materials, dimensions & drawings are approximate. 3. Information is subject to change without notice, at developer's absolute discretion. 4. Actual area may vary from the stated area. 5. Drawing are not to scale. 6. All images used are for illustrative purpose only and do not represent the actual size, features, specifications, fittings and furnishings. 7. The developer reserves the right to make revisions/ alterations, at its absolute discretion, without any liability whatsoever.

2 BEDROOM LINK APARTMENT
TYPE F (with yard)

TOTAL SALEABLE AREA
SUITE = 803.31 SQ.FT.
YARD = 138.10 SQ.FT.
TOTAL = 941.41 SQ.FT.



List of unit numbers with this unit plan:

VIEWS

Ras Al Khor, Golf Course, Creek, Amenities
C1214, B1819, C2414

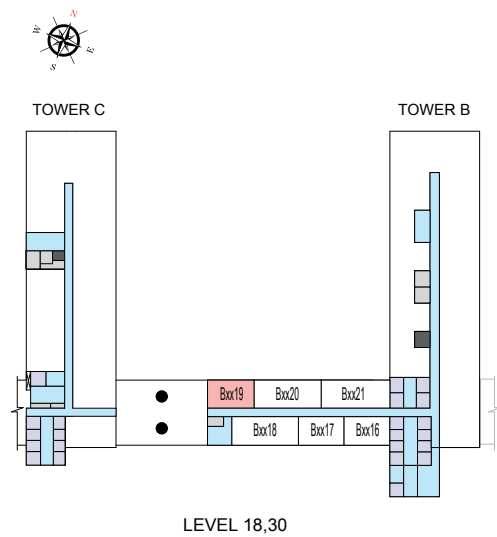
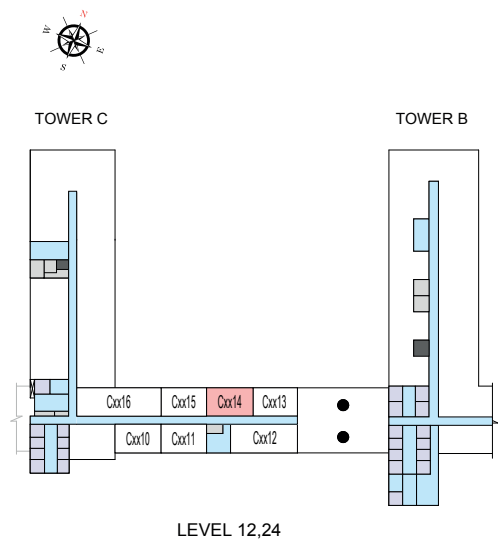
Ras Al Khor, Golf Course, Creek
B3019

Disclaimer: 1. All dimensions are in metric, measured to wall finishes. 2. All materials, dimensions & drawings are approximate. 3. Information is subject to change without notice, at developer's absolute discretion. 4. Actual area may vary from the stated area. 5. Drawing are not to scale. 6. All images used are for illustrative purpose only and do not represent the actual size, features, specifications, fittings and furnishings. 7. The developer reserves the right to make revisions/ alterations, at its absolute discretion, without any liability whatsoever.

2 BEDROOM LINK APARTMENT
TYPE F (with yard)

TOTAL SALEABLE AREA
SUITE = 803.31 SQ.FT.
YARD = 138.10 SQ.FT.
TOTAL = 941.41 SQ.FT.

UNIT



List of unit numbers with this unit plan:

VIEWS

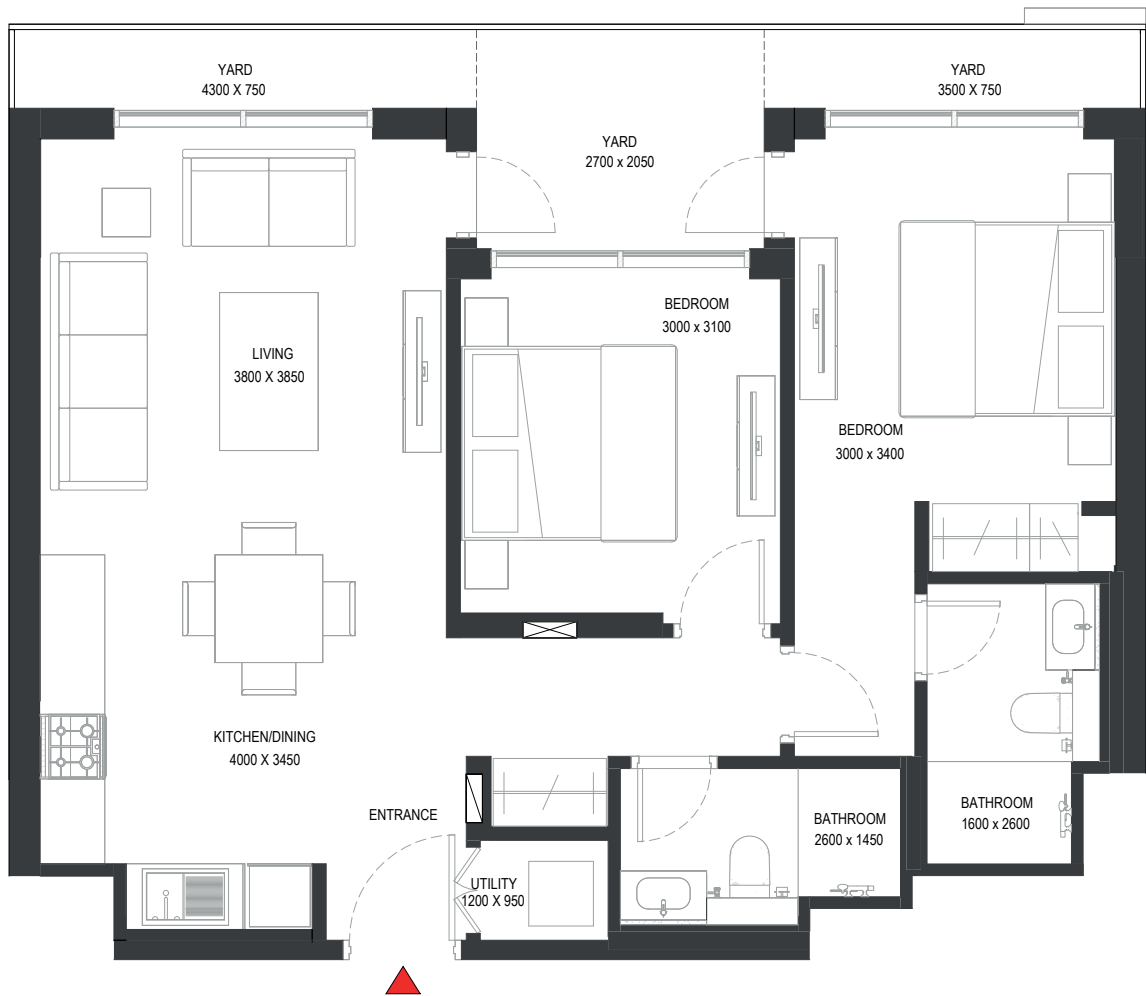
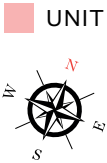
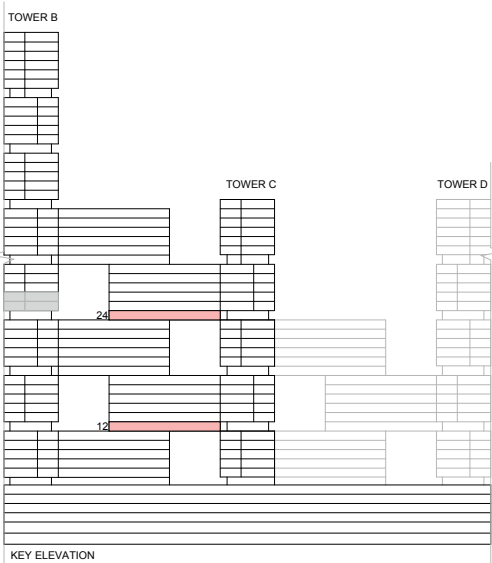
Ras Al Khor, Golf Course, Creek, Amenities
C1214, B1819, C2414

Ras Al Khor, Golf Course, Creek
B3019

Disclaimer: 1. All dimensions are in metric, measured to wall finishes. 2. All materials, dimensions & drawings are approximate. 3. Information is subject to change without notice, at developer's absolute discretion. 4. Actual area may vary from the stated area. 5. Drawing are not to scale. 6. All images used are for illustrative purpose only and do not represent the actual size, features, specifications, fittings and furnishings. 7. The developer reserves the right to make revisions/ alterations, at its absolute discretion, without any liability whatsoever.

2 BEDROOM LINK APARTMENT
TYPE F (with yard) VARIANT 1

TOTAL SALEABLE AREA
SUITE = 803.31 SQ.FT.
YARD = 138.10 SQ.FT.
TOTAL = 941.41 SQ.FT.



List of unit numbers with this unit plan:

VIEWS

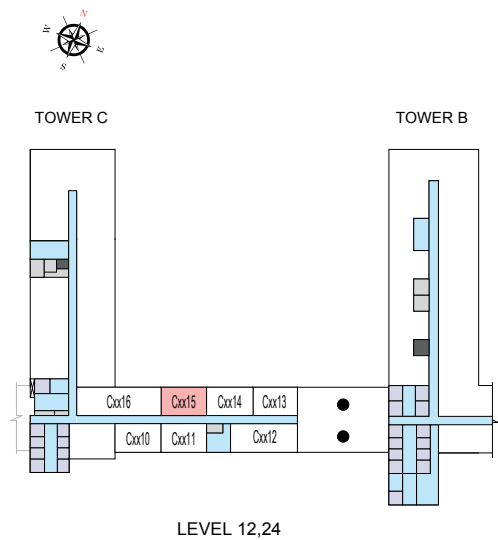
Golf Course, Creek, Amenities
C1215, C2415

Disclaimer: 1. All dimensions are in metric, measured to wall finishes. 2. All materials, dimensions & drawings are approximate. 3. Information is subject to change without notice, at developer's absolute discretion. 4. Actual area may vary from the stated area. 5. Drawing are not to scale. 6. All images used are for illustrative purpose only and do not represent the actual size, features, specifications, fittings and furnishings. 7. The developer reserves the right to make revisions/ alterations, at its absolute discretion, without any liability whatsoever.

2 BEDROOM LINK APARTMENT
TYPE F (with yard) VARIANT 1

TOTAL SALEABLE AREA
SUITE = 803.31 SQ.FT.
YARD = 138.10 SQ.FT.
TOTAL = 941.41 SQ.FT.

UNIT



List of unit numbers with this unit plan:

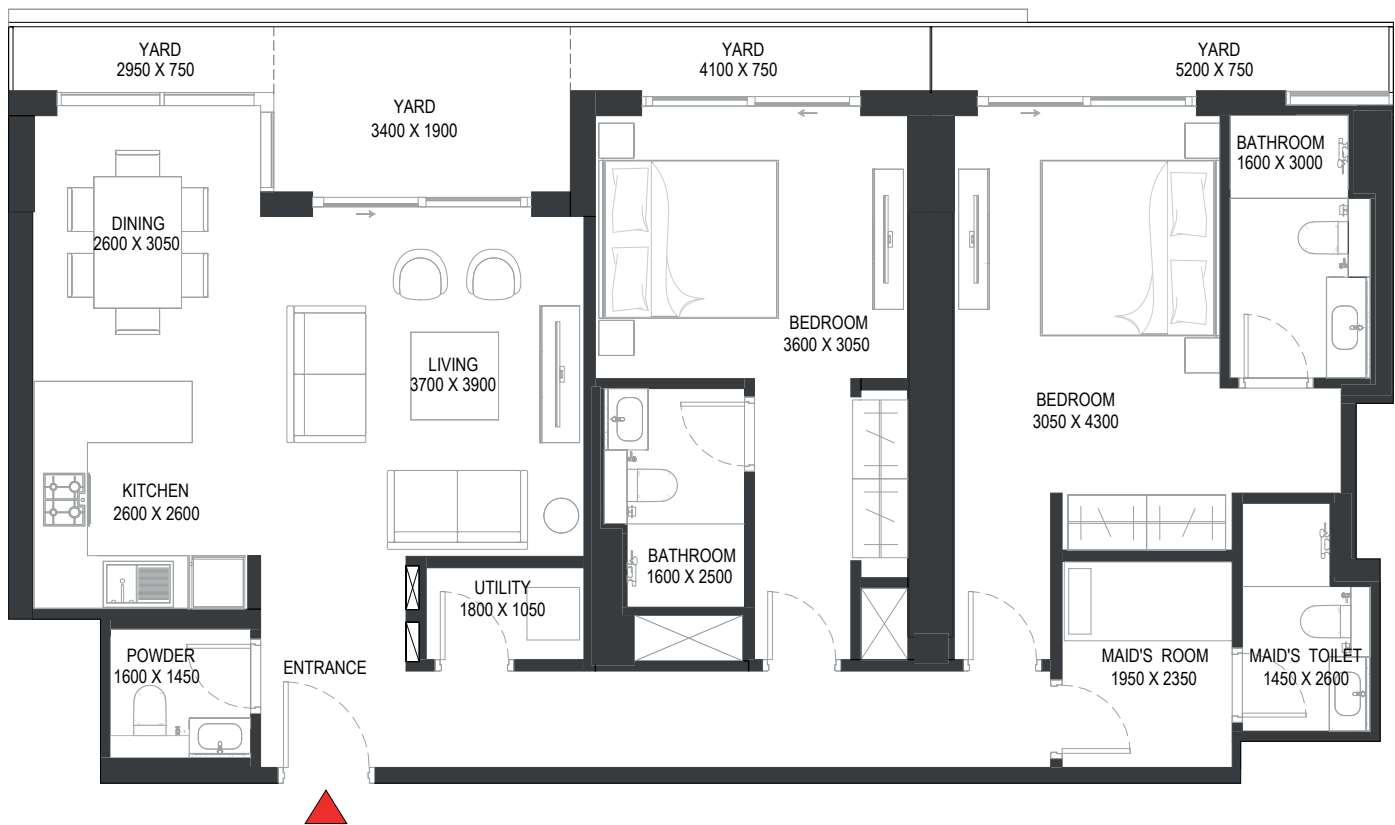
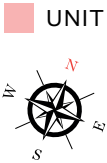
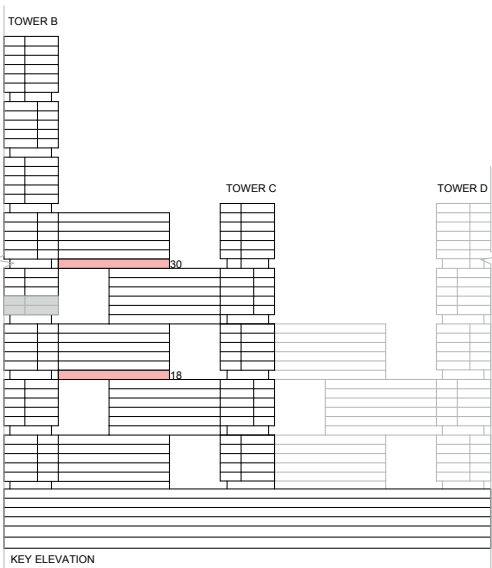
VIEWS

Golf Course, Creek, Amenities
C1215, C2415

Disclaimer: 1. All dimensions are in metric, measured to wall finishes. 2. All materials, dimensions & drawings are approximate. 3. Information is subject to change without notice, at developer's absolute discretion. 4. Actual area may vary from the stated area. 5. Drawing are not to scale. 6. All images used are for illustrative purpose only and do not represent the actual size, features, specifications, fittings and furnishings. 7. The developer reserves the right to make revisions/ alterations, at its absolute discretion, without any liability whatsoever.

2 BEDROOM LINK APARTMENT
TYPE H (with maid room, powder room + yard)

TOTAL SALEABLE AREA
SUITE = 1,204.91 SQ.FT.
YARD = 187.94 SQ.FT.
TOTAL = 1,392.85 SQ.FT.



List of unit numbers with this unit plan:

VIEWS

Ras Al Khor, Golf Course, Creek, Amenities
B1820

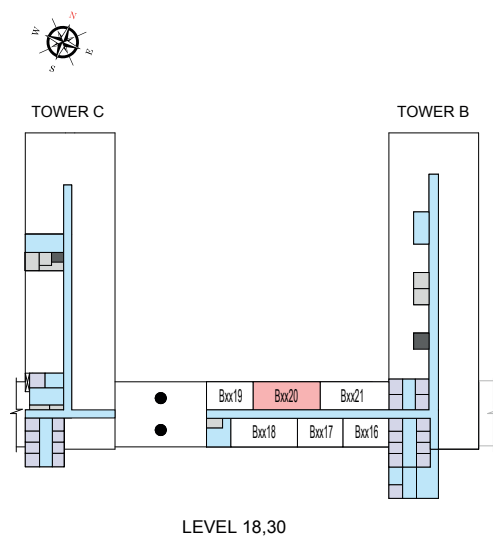
Ras Al Khor, Golf Course, Creek
B3020

Disclaimer: 1. All dimensions are in metric, measured to wall finishes. 2. All materials, dimensions & drawings are approximate. 3. Information is subject to change without notice, at developer's absolute discretion. 4. Actual area may vary from the stated area. 5. Drawing are not to scale. 6. All images used are for illustrative purpose only and do not represent the actual size, features, specifications, fittings and furnishings. 7. The developer reserves the right to make revisions/ alterations, at its absolute discretion, without any liability whatsoever.

2 BEDROOM LINK APARTMENT
TYPE H (with maid room, powder room + yard)

TOTAL SALEABLE AREA
SUITE = 1,204.91 SQ.FT.
YARD = 187.94 SQ.FT.
TOTAL = 1,392.85 SQ.FT.

UNIT



List of unit numbers with this unit plan:

VIEWS

Ras Al Khor, Golf Course, Creek, Amenities
B1820

Ras Al Khor, Golf Course, Creek
B3020

Disclaimer: 1. All dimensions are in metric, measured to wall finishes. 2. All materials, dimensions & drawings are approximate. 3. Information is subject to change without notice, at developer's absolute discretion. 4. Actual area may vary from the stated area. 5. Drawing are not to scale. 6. All images used are for illustrative purpose only and do not represent the actual size, features, specifications, fittings and furnishings. 7. The developer reserves the right to make revisions/ alterations, at its absolute discretion, without any liability whatsoever.

2 BEDROOM LINK APARTMENT

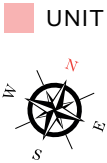
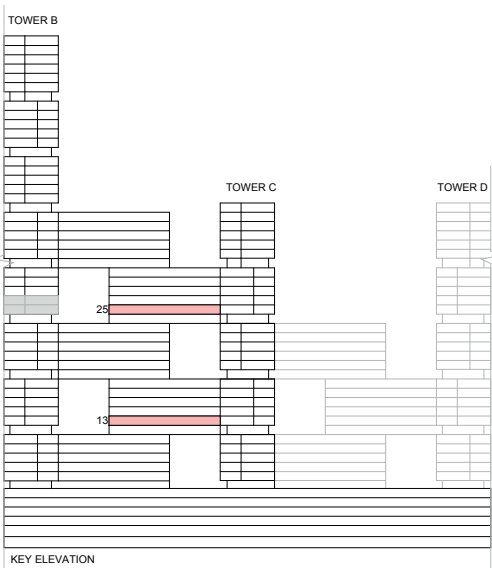
TYPE J (with powder room + yard)

TOTAL SALEABLE AREA

SUITE = 915.79 SQ.FT.

YARD = 149.83 SQ.FT.

TOTAL = 1,065.63 SQ.FT.



List of unit numbers with this unit plan:

VIEWS

Ras Al Khor, Golf Course, Creek, Amenities
C1313, C2513

Disclaimer: 1. All dimensions are in metric, measured to wall finishes. 2. All materials, dimensions & drawings are approximate. 3. Information is subject to change without notice, at developer's absolute discretion. 4. Actual area may vary from the stated area. 5. Drawing are not to scale. 6. All images used are for illustrative purpose only and do not represent the actual size, features, specifications, fittings and furnishings. 7. The developer reserves the right to make revisions/ alterations, at its absolute discretion, without any liability whatsoever.

2 BEDROOM LINK APARTMENT

TYPE J (with powder room + yard)

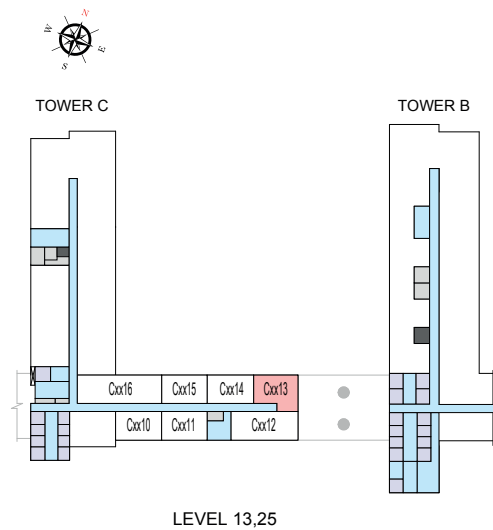
TOTAL SALEABLE AREA

SUITE = 915.79 SQ.FT.

YARD = 149.83 SQ.FT.

TOTAL = 1,065.63 SQ.FT.

UNIT



List of unit numbers with this unit plan:

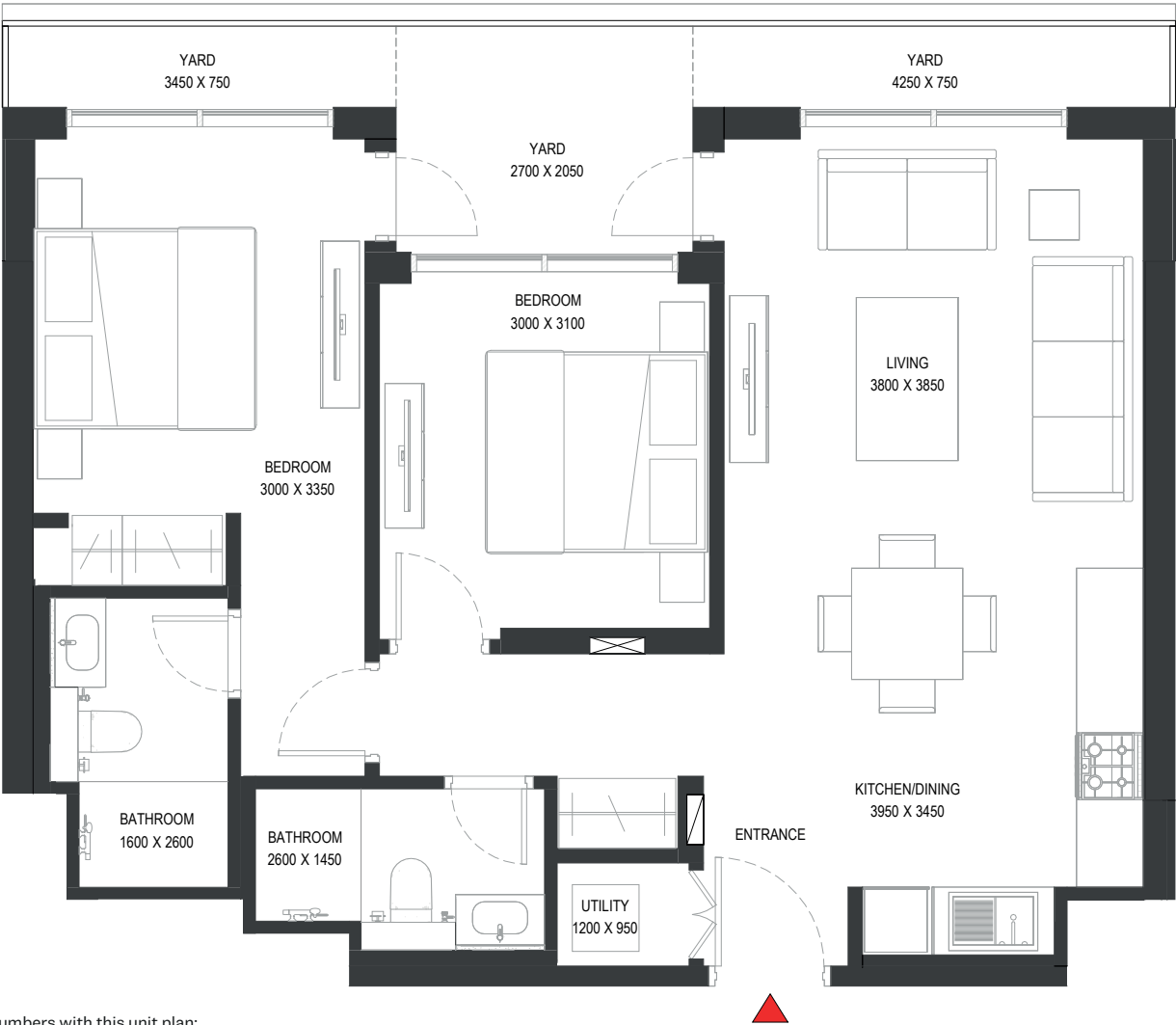
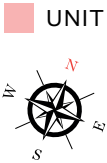
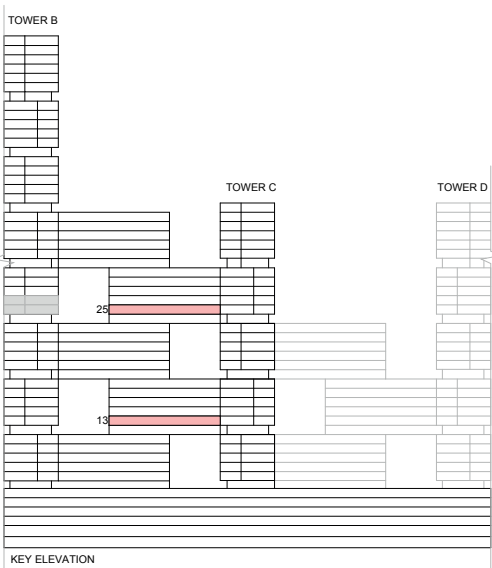
VIEWS

Ras Al Khor, Golf Course, Creek, Amenities
C1313, C2513

Disclaimer: 1. All dimensions are in metric, measured to wall finishes. 2. All materials, dimensions & drawings are approximate. 3. Information is subject to change without notice, at developer's absolute discretion. 4. Actual area may vary from the stated area. 5. Drawing are not to scale. 6. All images used are for illustrative purpose only and do not represent the actual size, features, specifications, fittings and furnishings. 7. The developer reserves the right to make revisions/ alterations, at its absolute discretion, without any liability whatsoever.

2 BEDROOM LINK APARTMENT
TYPE K (with yard)

TOTAL SALEABLE AREA
SUITE = 803.31 SQ.FT.
YARD = 138.10 SQ.FT.
TOTAL = 941.41 SQ.FT.



List of unit numbers with this unit plan:

VIEWS

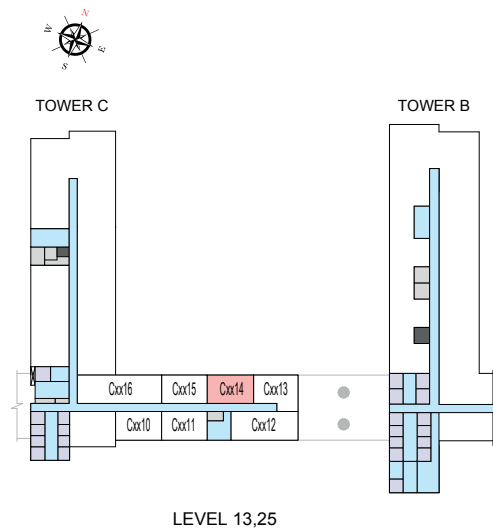
Ras Al Khor, Golf Course, Creek, Amenities
C1314, C2514

Disclaimer: 1. All dimensions are in metric, measured to wall finishes. 2. All materials, dimensions & drawings are approximate. 3. Information is subject to change without notice, at developer's absolute discretion. 4. Actual area may vary from the stated area. 5. Drawing are not to scale. 6. All images used are for illustrative purpose only and do not represent the actual size, features, specifications, fittings and furnishings. 7. The developer reserves the right to make revisions/ alterations, at its absolute discretion, without any liability whatsoever.

2 BEDROOM LINK APARTMENT
TYPE K (with yard)

TOTAL SALEABLE AREA
SUITE = 803.31 SQ.FT.
YARD = 138.10 SQ.FT.
TOTAL = 941.41 SQ.FT.

UNIT



List of unit numbers with this unit plan:

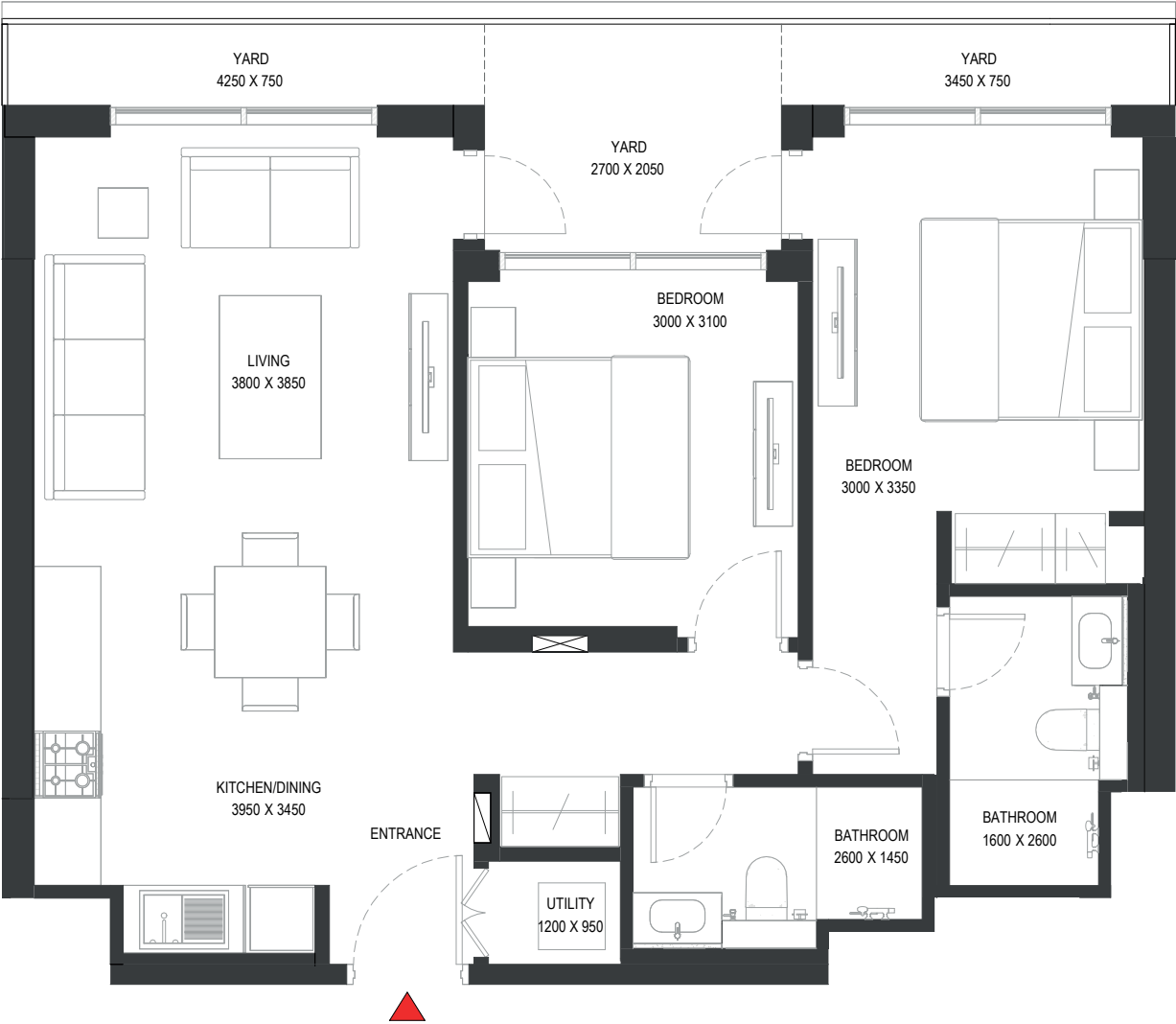
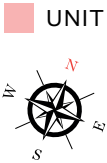
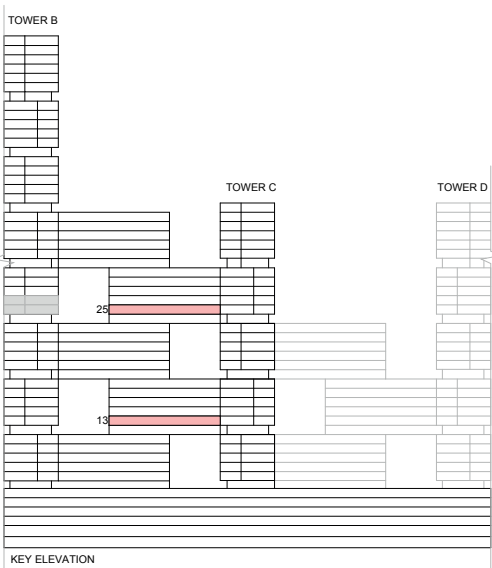
VIEWS

Ras Al Khor, Golf Course, Creek, Amenities
C1314, C2514

Disclaimer: 1. All dimensions are in metric, measured to wall finishes. 2. All materials, dimensions & drawings are approximate. 3. Information is subject to change without notice, at developer's absolute discretion. 4. Actual area may vary from the stated area. 5. Drawing are not to scale. 6. All images used are for illustrative purpose only and do not represent the actual size, features, specifications, fittings and furnishings. 7. The developer reserves the right to make revisions/ alterations, at its absolute discretion, without any liability whatsoever.

2 BEDROOM LINK APARTMENT
TYPE K (with yard) VARIANT 1

TOTAL SALEABLE AREA
SUITE = 803.31 SQ.FT.
YARD = 138.10 SQ.FT.
TOTAL = 941.41 SQ.FT.



List of unit numbers with this unit plan:

VIEWS

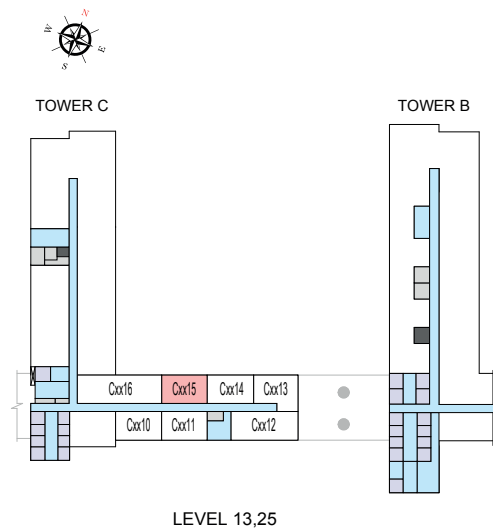
Golf Course, Creek, Amenities
C1315, C2515

Disclaimer: 1. All dimensions are in metric, measured to wall finishes. 2. All materials, dimensions & drawings are approximate. 3. Information is subject to change without notice, at developer's absolute discretion. 4. Actual area may vary from the stated area. 5. Drawing are not to scale. 6. All images used are for illustrative purpose only and do not represent the actual size, features, specifications, fittings and furnishings. 7. The developer reserves the right to make revisions/ alterations, at its absolute discretion, without any liability whatsoever.

2 BEDROOM LINK APARTMENT
TYPE K (with yard) VARIANT 1

TOTAL SALEABLE AREA
SUITE = 803.31 SQ.FT.
YARD = 138.10 SQ.FT.
TOTAL = 941.41 SQ.FT.

UNIT



List of unit numbers with this unit plan:

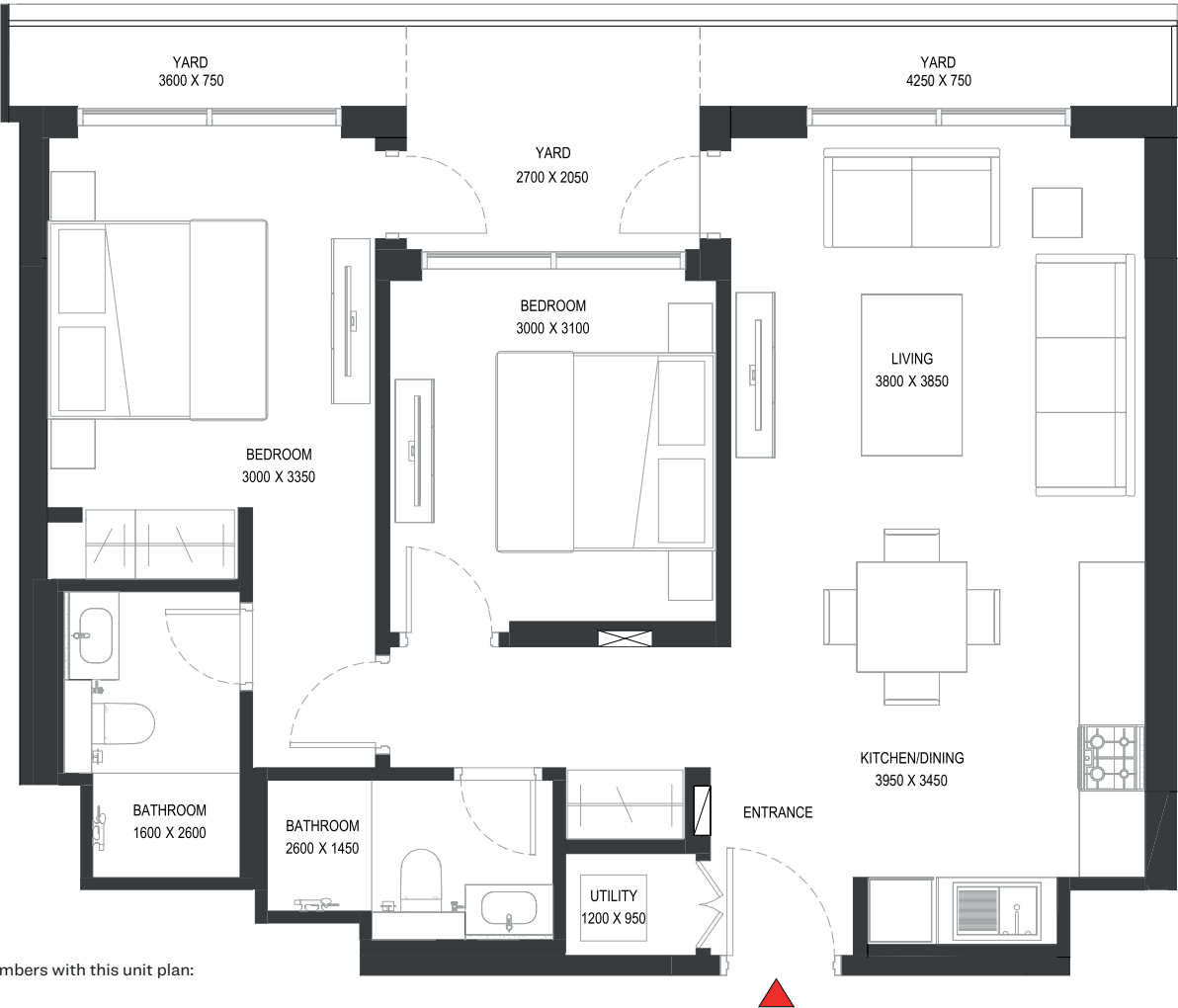
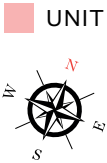
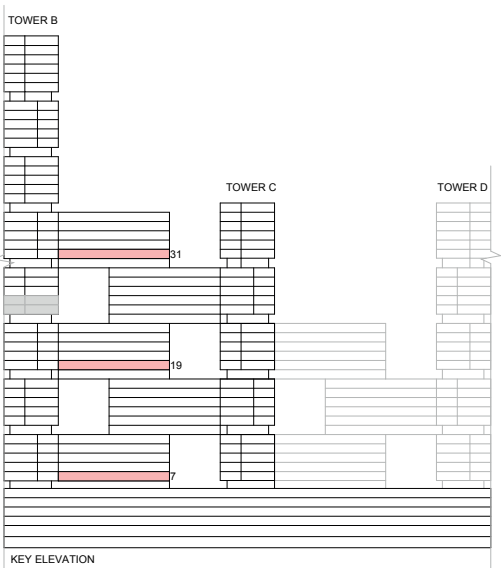
VIEWS

Golf Course, Creek, Amenities
C1315, C2515

Disclaimer: 1. All dimensions are in metric, measured to wall finishes. 2. All materials, dimensions & drawings are approximate. 3. Information is subject to change without notice, at developer's absolute discretion. 4. Actual area may vary from the stated area. 5. Drawing are not to scale. 6. All images used are for illustrative purpose only and do not represent the actual size, features, specifications, fittings and furnishings. 7. The developer reserves the right to make revisions/ alterations, at its absolute discretion, without any liability whatsoever.

2 BEDROOM LINK APARTMENT
TYPE K (with yard) VARIANT 2

TOTAL SALEABLE AREA
SUITE = 803.31 SQ.FT.
YARD = 139.72 SQ.FT.
TOTAL = 943.03 SQ.FT.



List of unit numbers with this unit plan:

VIEWS

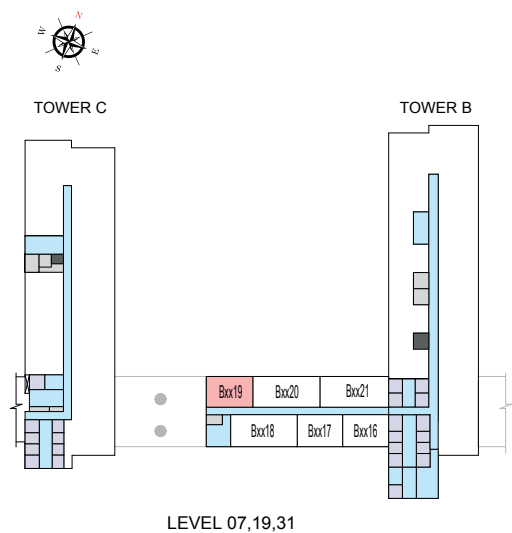
- Ras Al Khor, Creek, Amenities
B719
- Ras Al Khor, Golf Course, Creek, Amenities
B1919
- Ras Al Khor, Golf Course, Creek
B3119

Disclaimer: 1. All dimensions are in metric, measured to wall finishes. 2. All materials, dimensions & drawings are approximate. 3. Information is subject to change without notice, at developer's absolute discretion. 4. Actual area may vary from the stated area. 5. Drawing are not to scale. 6. All images used are for illustrative purpose only and do not represent the actual size, features, specifications, fittings and furnishings. 7. The developer reserves the right to make revisions/ alterations, at its absolute discretion, without any liability whatsoever.

2 BEDROOM LINK APARTMENT
TYPE K (with yard) VARIANT 2

TOTAL SALEABLE AREA
SUITE = 803.31 SQ.FT.
YARD = 139.72 SQ.FT.
TOTAL = 943.03 SQ.FT.

UNIT



List of unit numbers with this unit plan:

VIEWS

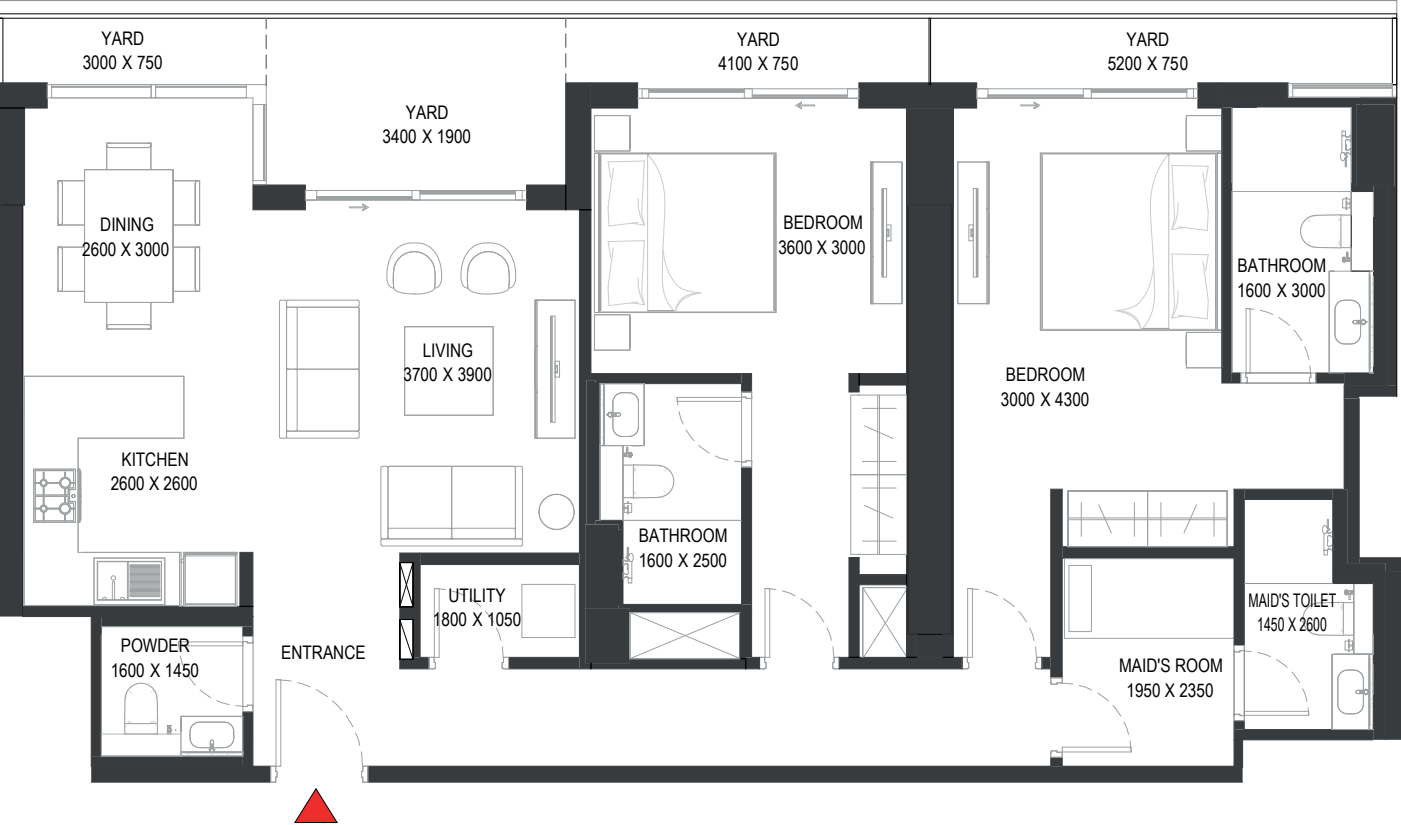
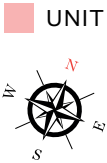
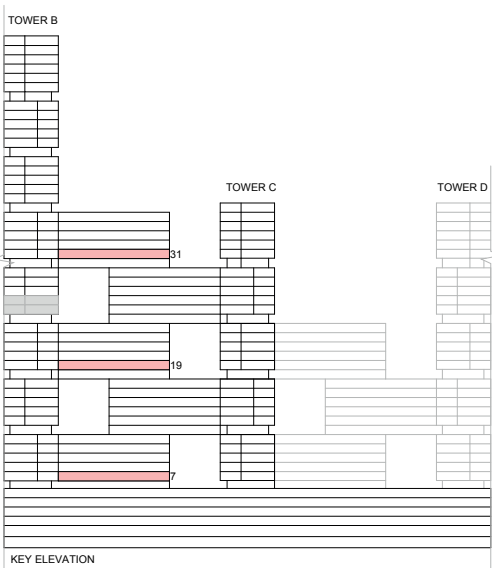
- Ras Al Khor, Creek, Amenities
B719
- Ras Al Khor, Golf Course, Creek, Amenities
B1919
- Ras Al Khor, Golf Course, Creek
B3119

Disclaimer: 1. All dimensions are in metric, measured to wall finishes. 2. All materials, dimensions & drawings are approximate. 3. Information is subject to change without notice, at developer's absolute discretion. 4. Actual area may vary from the stated area. 5. Drawing are not to scale. 6. All images used are for illustrative purpose only and do not represent the actual size, features, specifications, fittings and furnishings. 7. The developer reserves the right to make revisions/ alterations, at its absolute discretion, without any liability whatsoever.

2 BEDROOM LINK APARTMENT

TYPE M (with maid room, powder room + yard)

TOTAL SALEABLE AREA
 SUITE = 1,204.91 SQ.FT.
 YARD = 187.94 SQ.FT.
 TOTAL = 1,392.85 SQ.FT.



List of unit numbers with this unit plan:

VIEWS

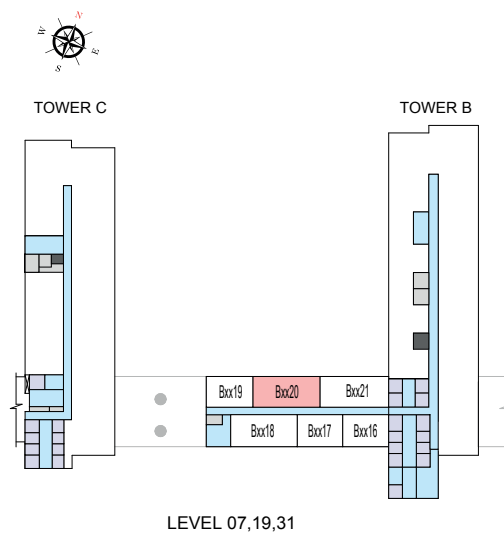
- Ras Al Khor, Creek, Amenities
B720
- Ras Al Khor, Golf Course, Creek, Amenities
B1920
- Ras Al Khor, Golf Course, Creek
B3120

Disclaimer: 1. All dimensions are in metric, measured to wall finishes. 2. All materials, dimensions & drawings are approximate. 3. Information is subject to change without notice, at developer's absolute discretion. 4. Actual area may vary from the stated area. 5. Drawing are not to scale. 6. All images used are for illustrative purpose only and do not represent the actual size, features, specifications, fittings and furnishings. 7. The developer reserves the right to make revisions/ alterations, at its absolute discretion, without any liability whatsoever.

2 BEDROOM LINK APARTMENT
TYPE M (with maid room, powder room + yard)

TOTAL SALEABLE AREA
SUITE = 1,204.91 SQ.FT.
YARD = 187.94 SQ.FT.
TOTAL = 1,392.85 SQ.FT.

UNIT



List of unit numbers with this unit plan:

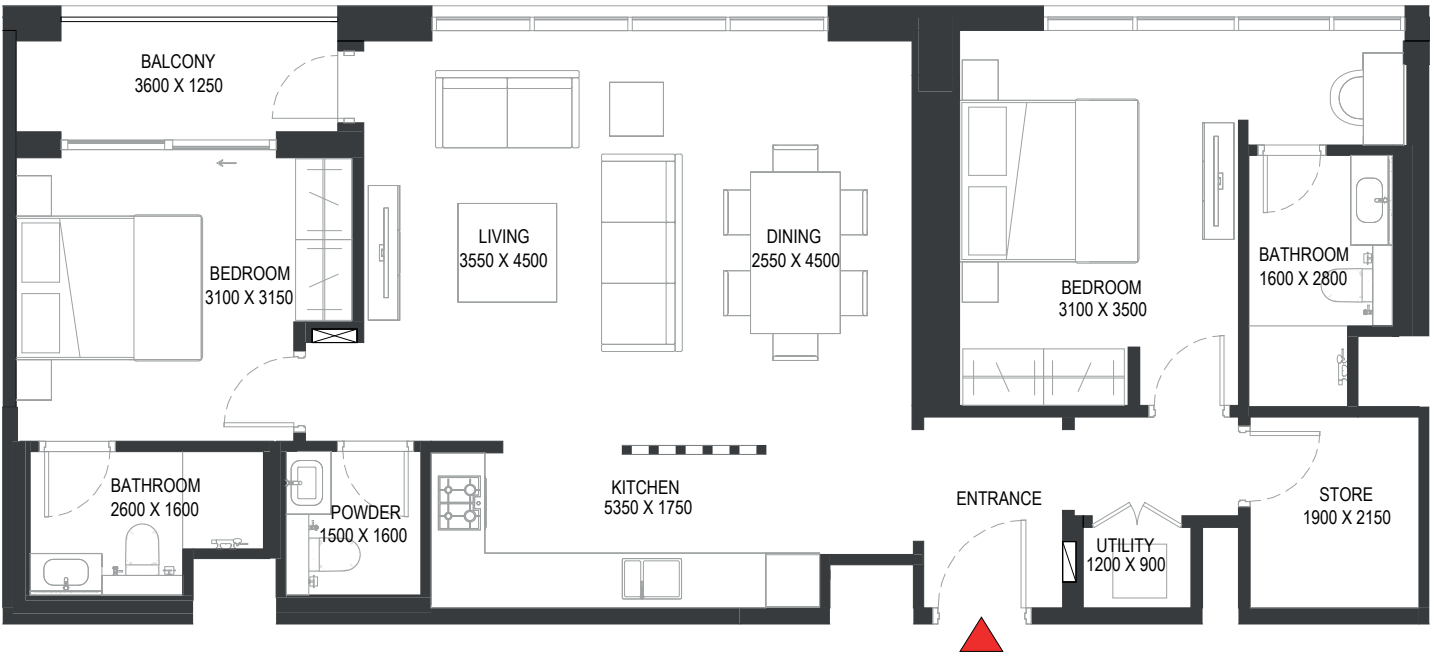
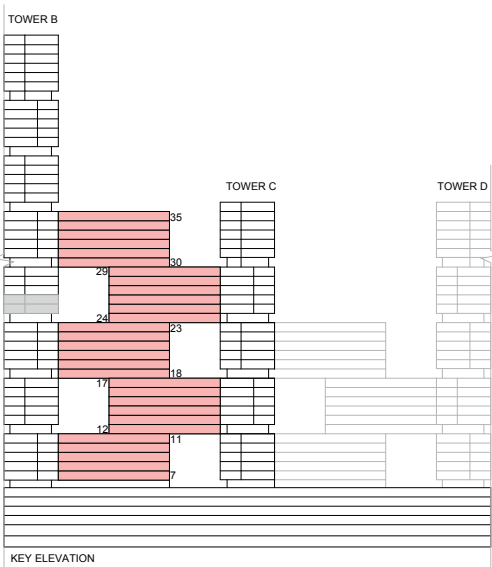
VIEWS

- Ras Al Khor, Creek, Amenities
B720
- Ras Al Khor, Golf Course, Creek, Amenities
B1920
- Ras Al Khor, Golf Course, Creek
B3120

Disclaimer: 1. All dimensions are in metric, measured to wall finishes. 2. All materials, dimensions & drawings are approximate. 3. Information is subject to change without notice, at developer's absolute discretion. 4. Actual area may vary from the stated area. 5. Drawing are not to scale. 6. All images used are for illustrative purpose only and do not represent the actual size, features, specifications, fittings and furnishings. 7. The developer reserves the right to make revisions/ alterations, at its absolute discretion, without any liability whatsoever.

2 BEDROOM LINK APARTMENT
TYPE N (with maid room, powder room + balcony)

TOTAL SALEABLE AREA
SUITE = 1,052.93 SQ.FT.
BALCONY = 59.09 SQ.FT.
TOTAL = 1,112.02 SQ.FT.



List of unit numbers with this unit plan:

VIEWS

City View

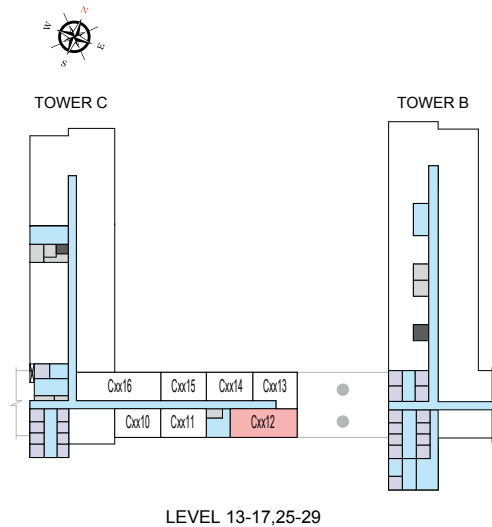
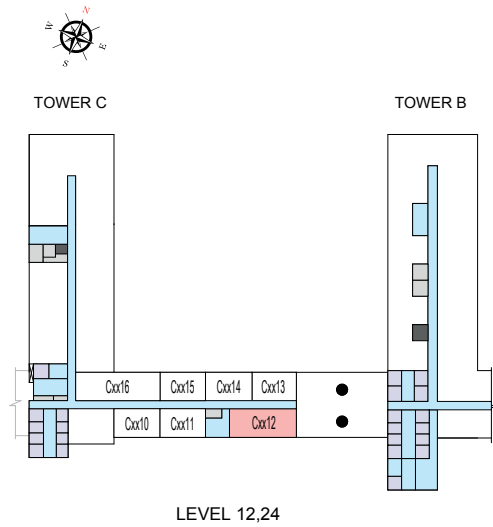
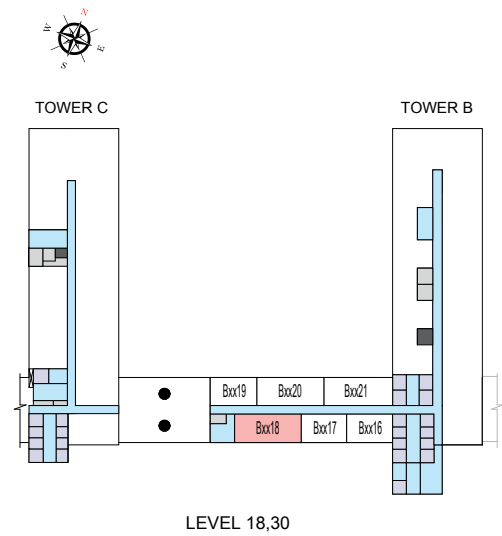
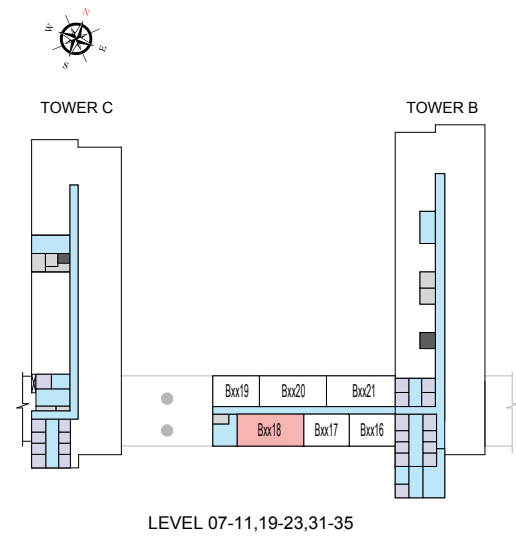
B718, B818, B918, B1018, B1118, B1818, B1918, B2018, B2118, B2218, B2318, B3018, B3118, B3218, B3318, B3418, B3518, C1212, C1312, C1412, C1512, C1612, C1712, C2412, C2512, C2612, C2712, C2812, C2912

Disclaimer: 1. All dimensions are in metric, measured to wall finishes. 2. All materials, dimensions & drawings are approximate. 3. Information is subject to change without notice, at developer's absolute discretion. 4. Actual area may vary from the stated area. 5. Drawing are not to scale. 6. All images used are for illustrative purpose only and do not represent the actual size, features, specifications, fittings and furnishings. 7. The developer reserves the right to make revisions/ alterations, at its absolute discretion, without any liability whatsoever.

2 BEDROOM LINK APARTMENT
TYPE N (with maid room, powder room + balcony)

TOTAL SALEABLE AREA
SUITE = 1,052.93 SQ.FT.
BALCONY = 59.09 SQ.FT.
TOTAL = 1,112.02 SQ.FT.

UNIT



List of unit numbers with this unit plan:

VIEWS

City View

B718, B818, B918, B1018, B1118, B1818, B1918, B2018, B2118, B2218, B2318, B3018, B3118, B3218, B3318, B3418, B3518, C1212, C1312, C1412, C1512, C1612, C1712, C2412, C2512, C2612, C2712, C2812, C2912

Disclaimer: 1. All dimensions are in metric, measured to wall finishes. 2. All materials, dimensions & drawings are approximate. 3. Information is subject to change without notice, at developer's absolute discretion. 4. Actual area may vary from the stated area. 5. Drawing are not to scale. 6. All images used are for illustrative purpose only and do not represent the actual size, features, specifications, fittings and furnishings. 7. The developer reserves the right to make revisions/ alterations, at its absolute discretion, without any liability whatsoever.



SOBHA ONE

SOBHA
REALTY

ALL PICTURES SHOWN ARE FOR ILLUSTRATION PURPOSE ONLY. ACTUAL PRODUCT MAY VARY DUE TO PRODUCT ENHANCEMENT.