



HARMONY FLOOR PLANS

TYPICAL FLOOR PLAN

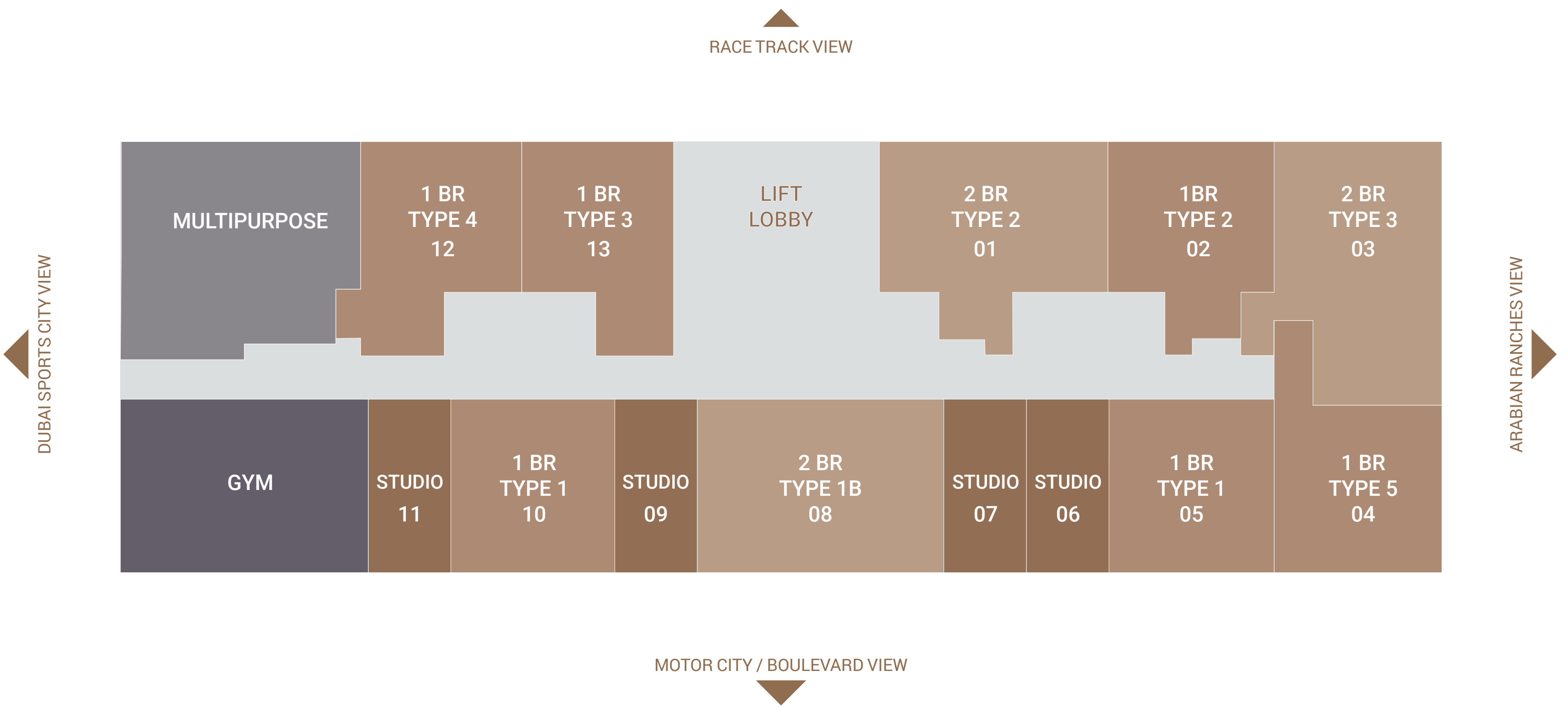


Typical Floor Plans

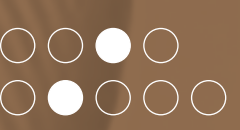
HARMONY

Level - 02

UNIT	COUNT
Studio	4 Units
1 Bedroom	6 Units
2 Bedroom	3 Units
TOTAL	13 Units



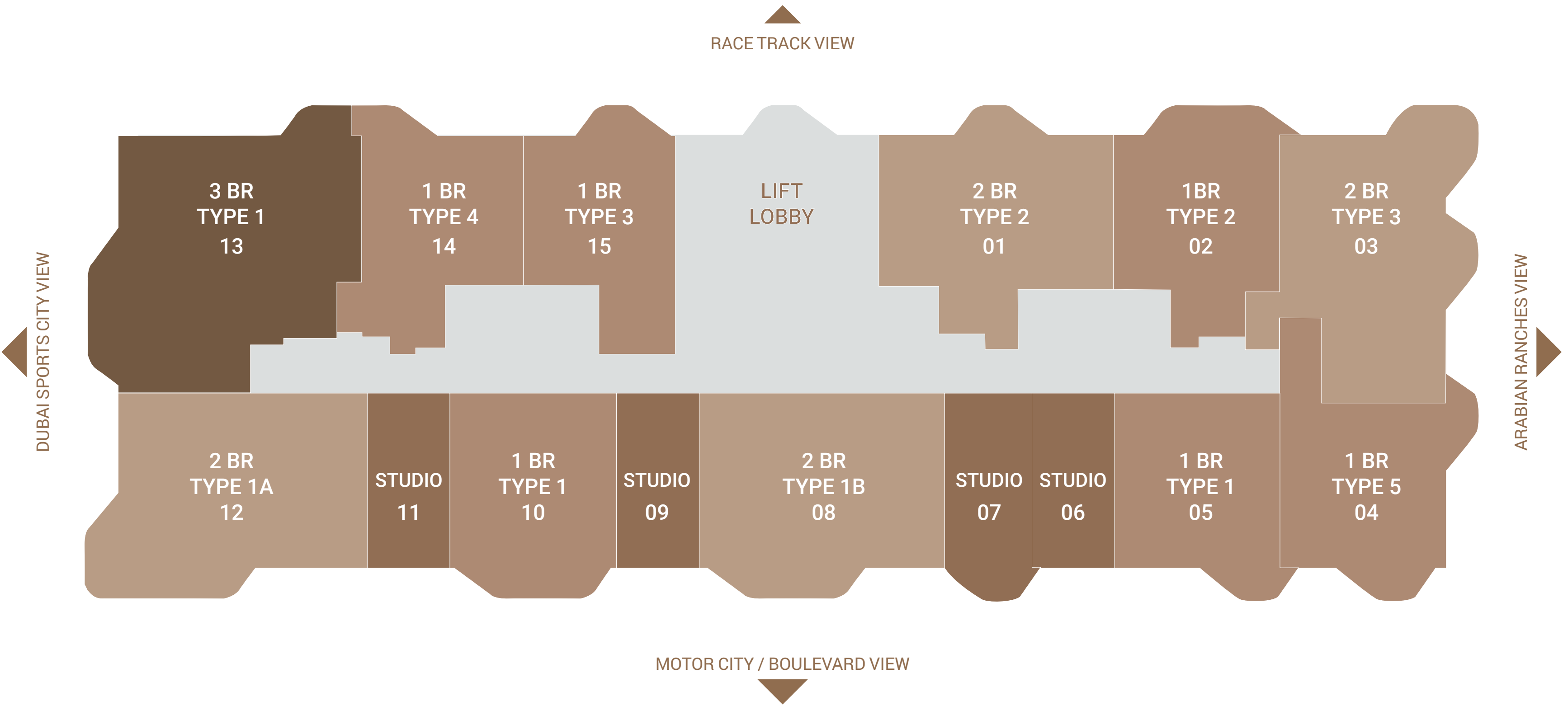
All images used are for illustrative purposes only and do not represent the actual size, features, specifications, fittings and furnishings. The developer reserves the right to make revisions / alterations, at its absolute discretion, without any liability whatsoever.

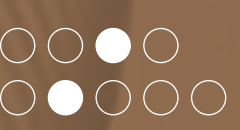


HARMONY

Level - 03, 05, 07, 09, 11, 13, 15, 17

UNIT	COUNT
Studio	4 Units
1 Bedroom	6 Units
2 Bedroom	4 Units
3 Bedroom	1 Unit
TOTAL	15 Units

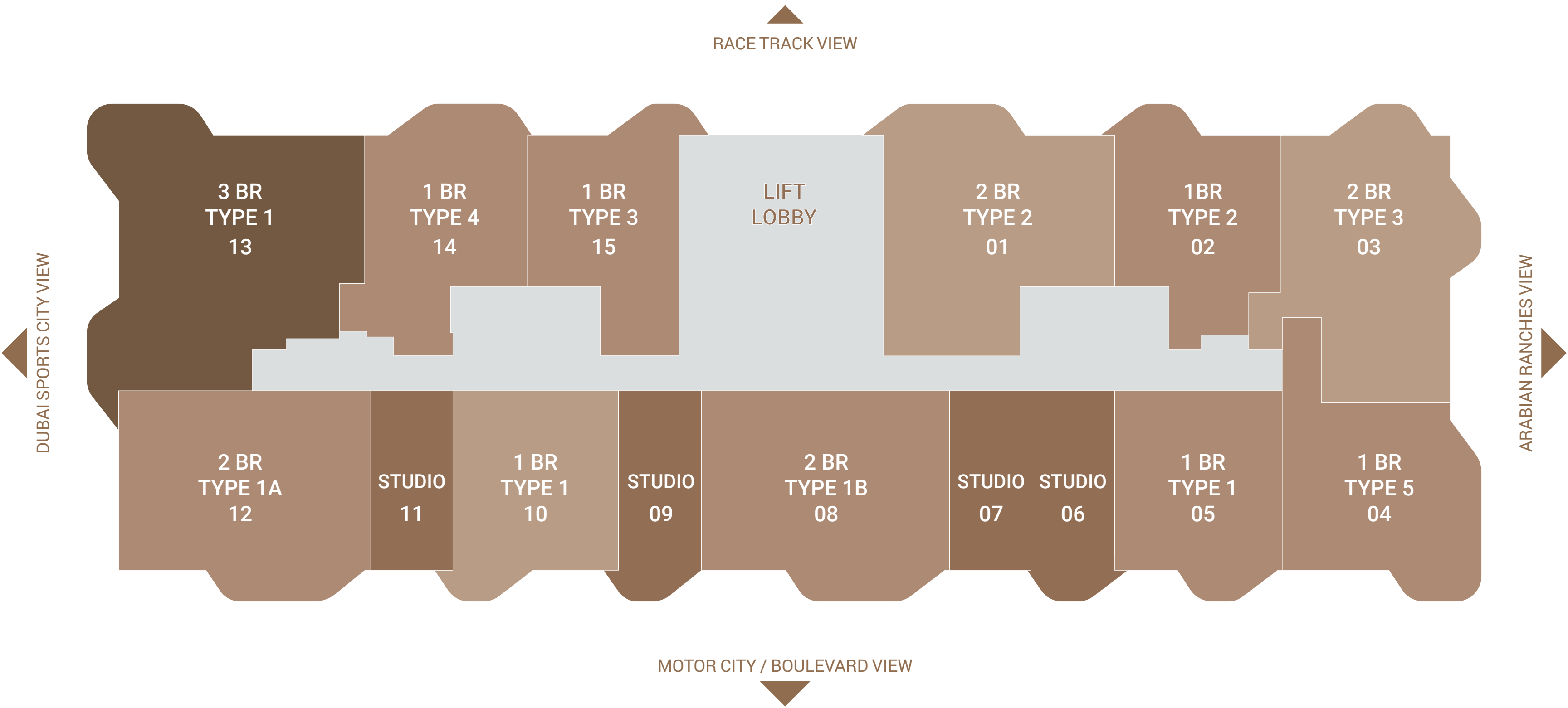




HARMONY

Level - 04, 06 ,08, 10, 12, 14, 16

UNIT	COUNT
Studio	4 Units
1 Bedroom	6 Units
2 Bedroom	4 Units
3 Bedroom	1 Unit
TOTAL	15 Units

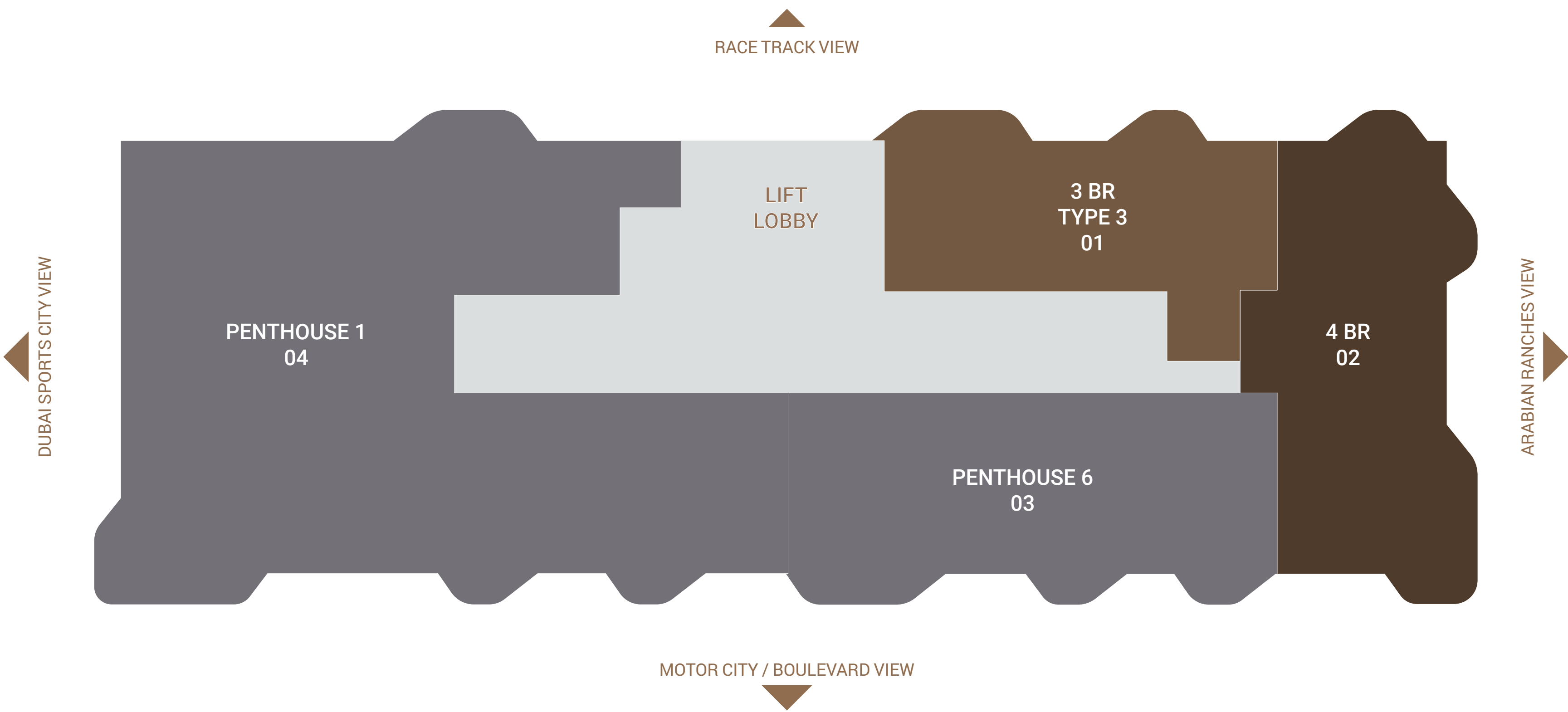




HARMONY

Level - 18

UNIT	COUNT
3 Bedroom	1 Unit
4 Bedroom	1 Unit
Penthouse	2 Units
TOTAL	4 Units



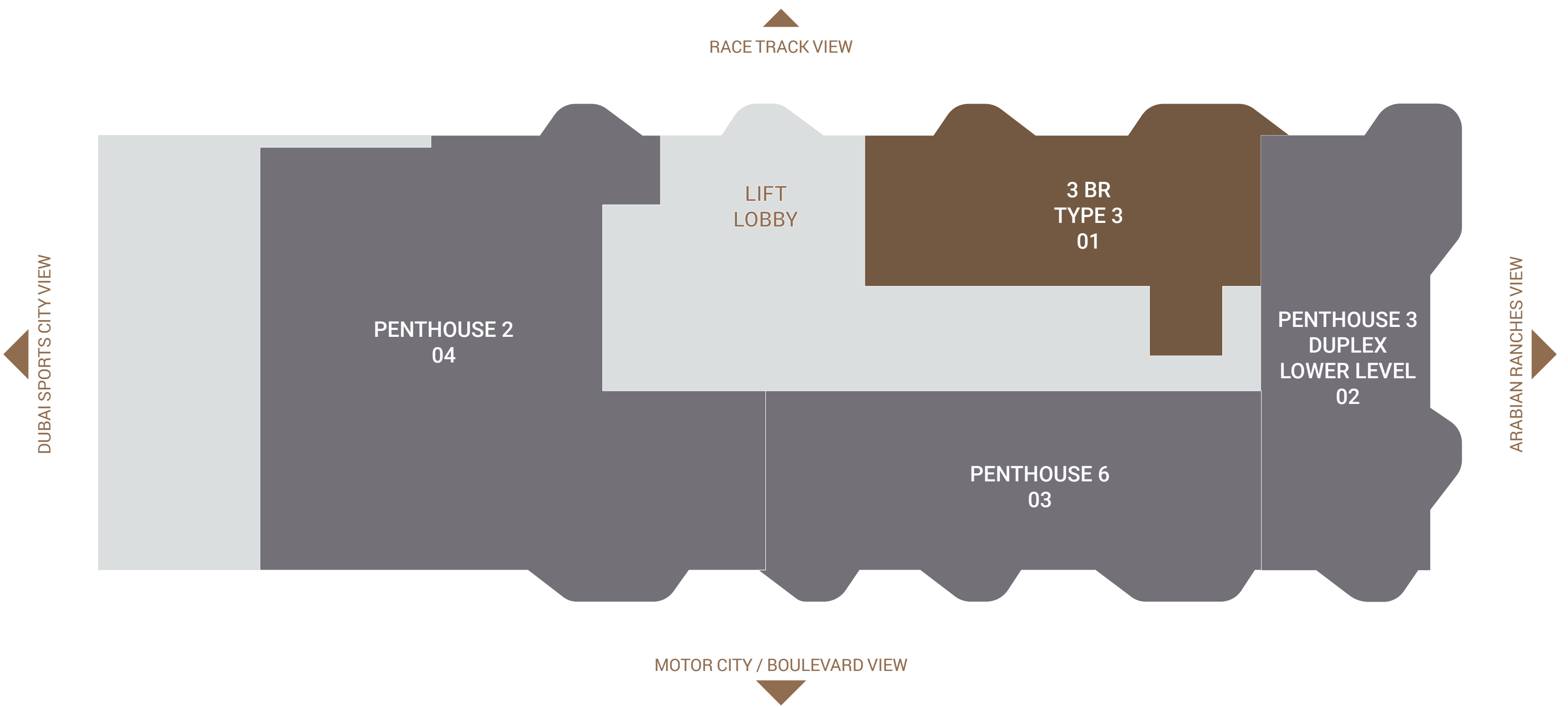
All images used are for illustrative purposes only and do not represent the actual size, features, specifications, fittings and furnishings. The developer reserves the right to make revisions / alterations, at its absolute discretion, without any liability whatsoever.



HARMONY

Level - 19

UNIT	COUNT
3 Bedroom	1 Unit
Penthouse	2 Units
Penthouse Duplex	1 Unit
TOTAL	4 Units



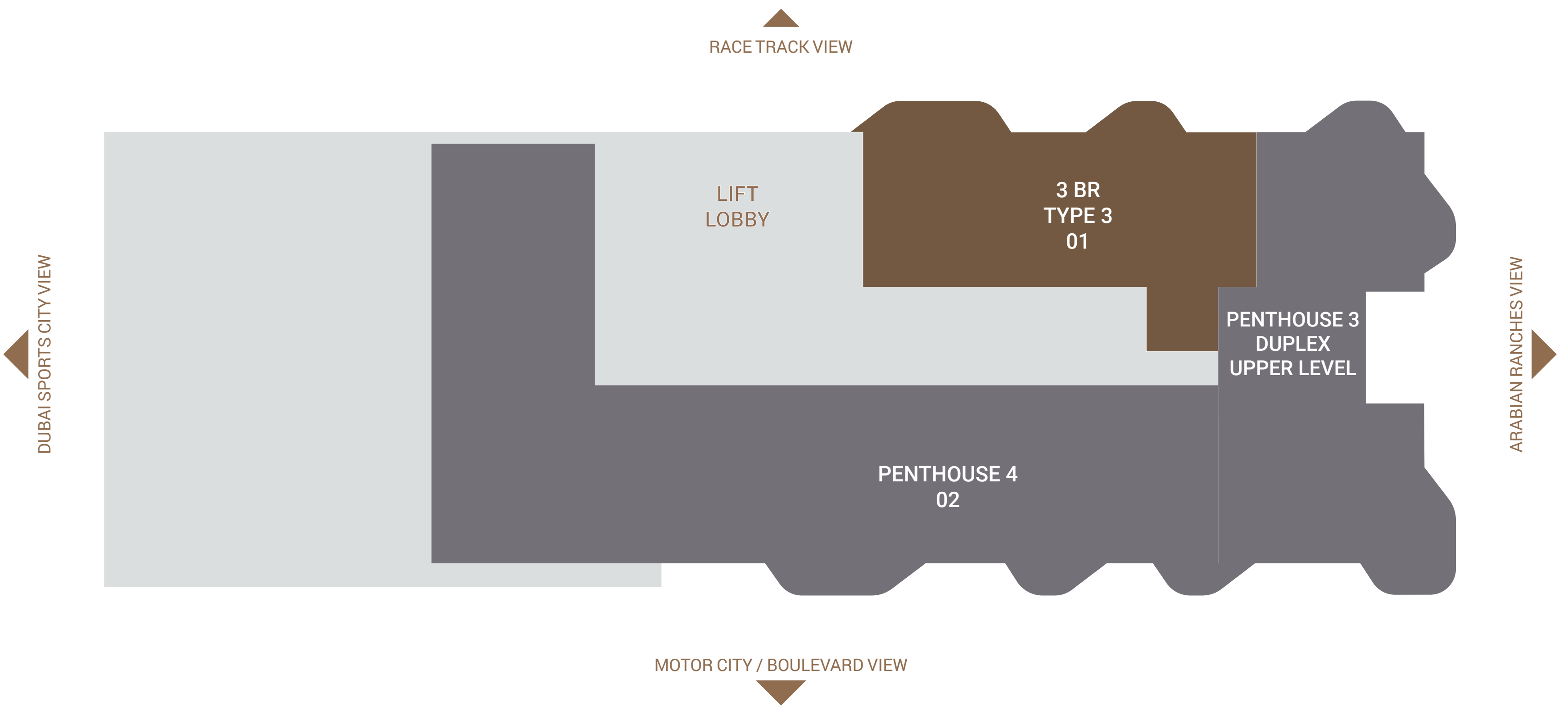
All images used are for illustrative purposes only and do not represent the actual size, features, specifications, fittings and furnishings. The developer reserves the right to make revisions / alterations, at its absolute discretion, without any liability whatsoever.



HARMONY

Level - 20

UNIT	COUNT
3 Bedroom	1 Unit
Pentshouse	1 Unit
TOTAL	2 Units



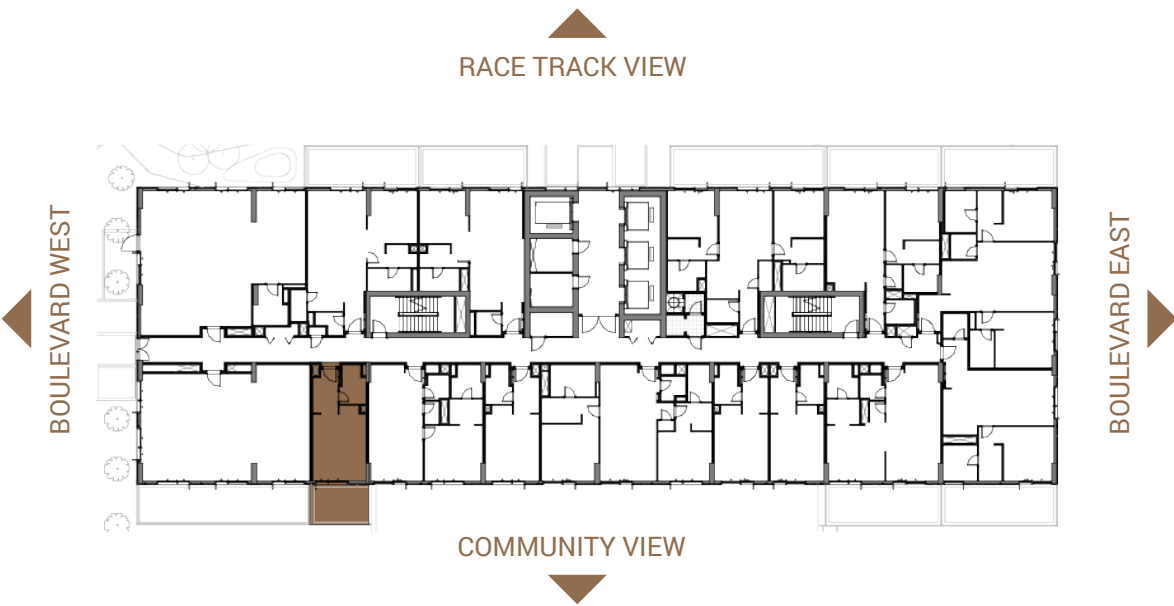
All images used are for illustrative purposes only and do not represent the actual size, features, specifications, fittings and furnishings. The developer reserves the right to make revisions / alterations, at its absolute discretion, without any liability whatsoever.

UNIT PLANS

Studio Apartment - Type - 1

Unit Area	372.11 sq.ft
Balcony Area	147.36 sq.ft
Total Area	519.47 sq.ft

Keyplan Level 2



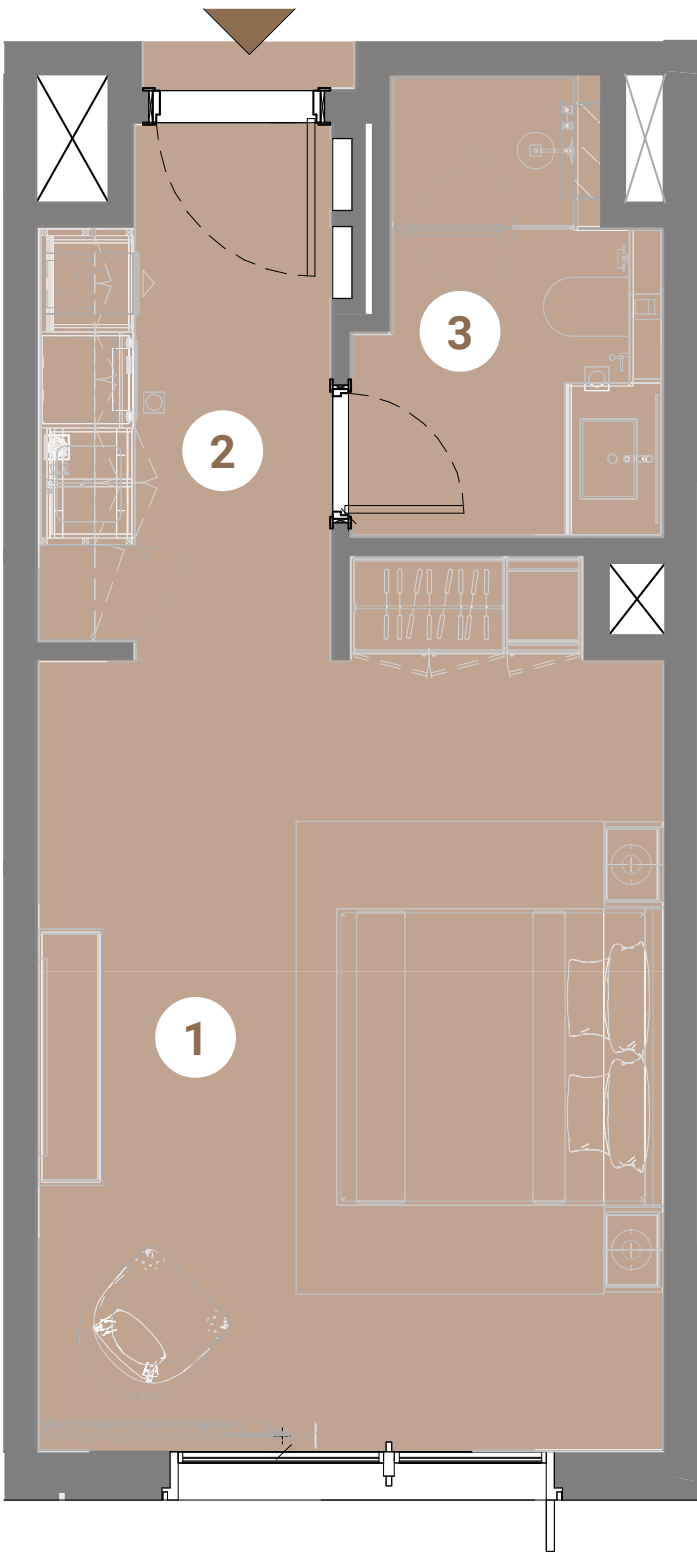
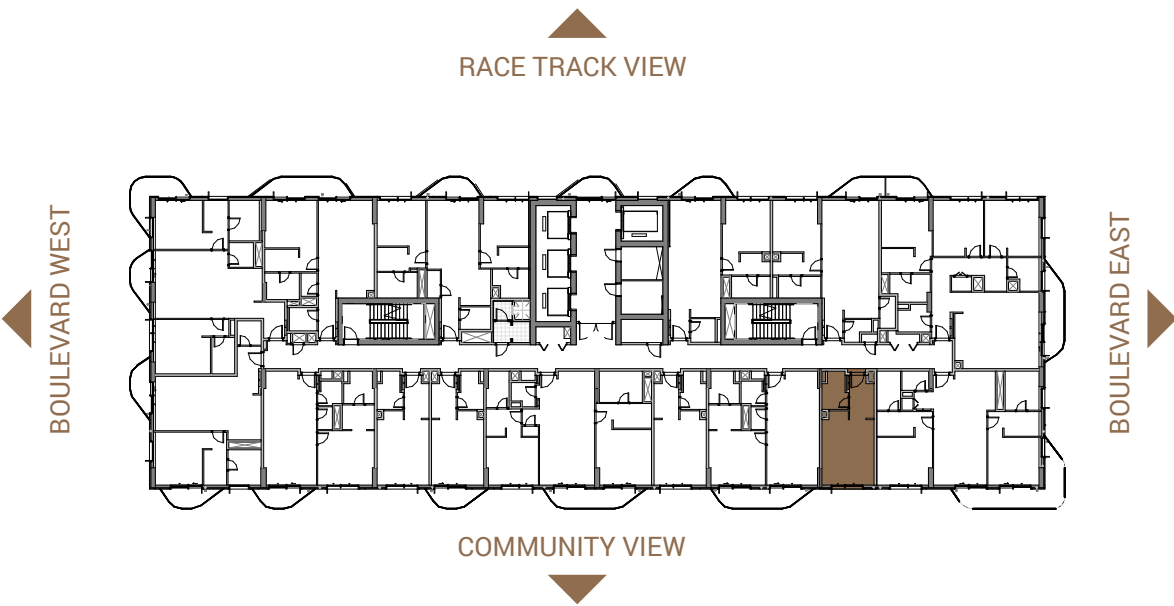
- 1 Bed Space 4.95m x 3.93m
- 2 Kitchen 2.70m x 1.85m
- 3 Bath 2.90m x 1.98m
- 4 Terrace 2.90m x 4.38m



Studio Apartment - Type - 2

Unit Area	371.35 sq.ft
Total Area	371.35 sq.ft

Keyplan Level 3 (Typ. Odd Levels upto L17)



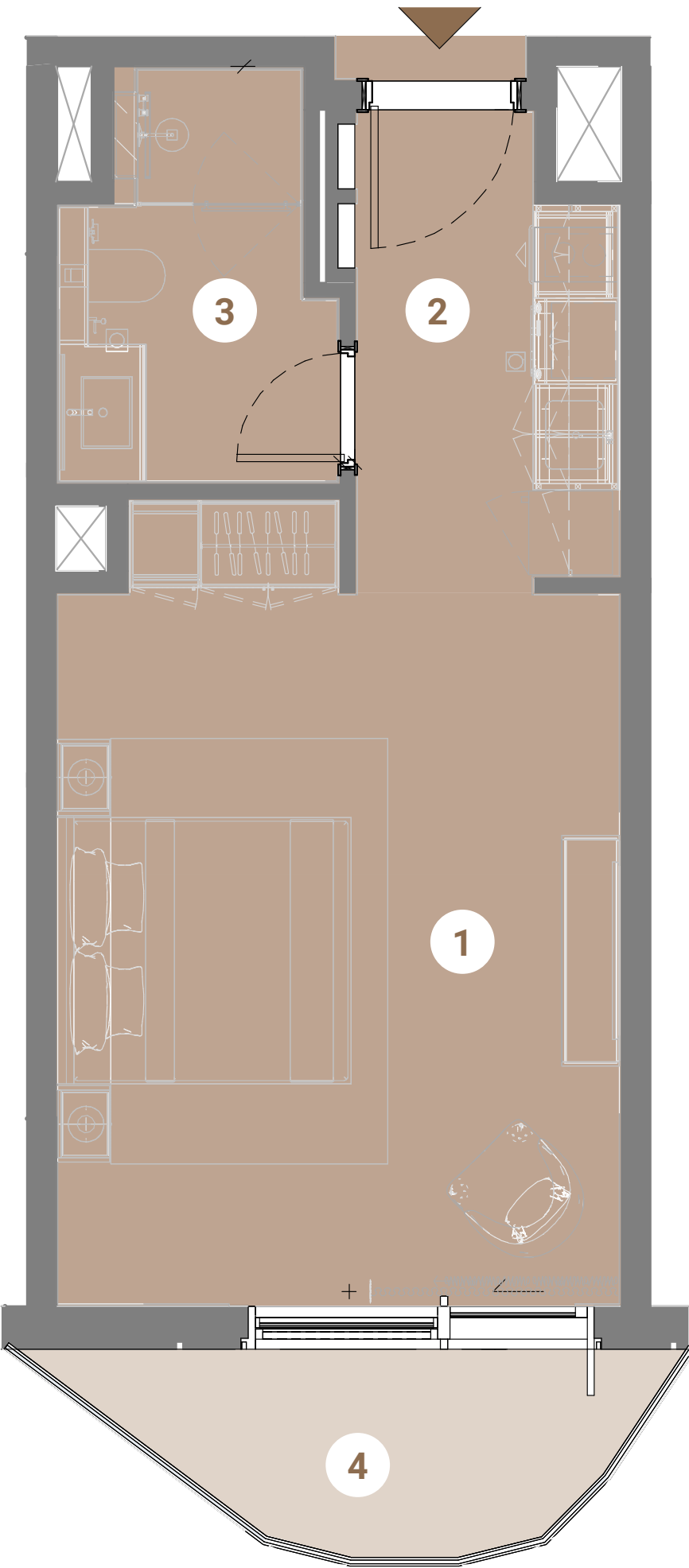
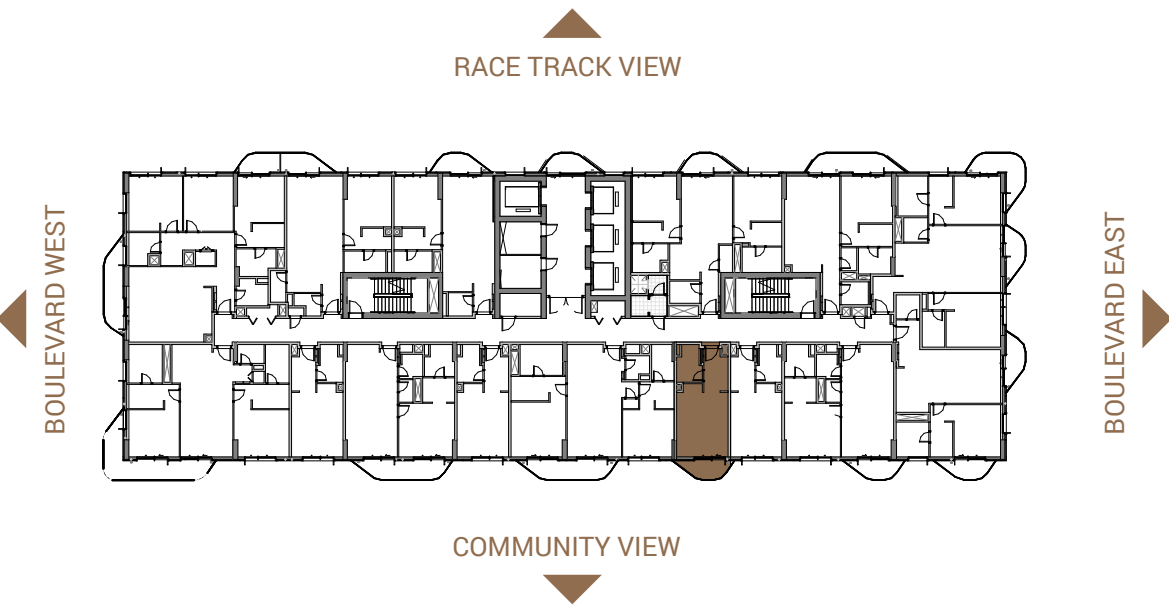
- 1 Bed Space 4.95m x 3.93m
- 2 Kitchen 3.35m x 1.85m
- 3 Bath 2.90m x 1.98m



Studio Apartment - Type - 3

Unit Area	372.11 sq.ft
Balcony Area	61.57 sq.ft
Total Area	433.68 sq.ft

Keyplan Level 3 (Typ. Odd Levels upto L17)



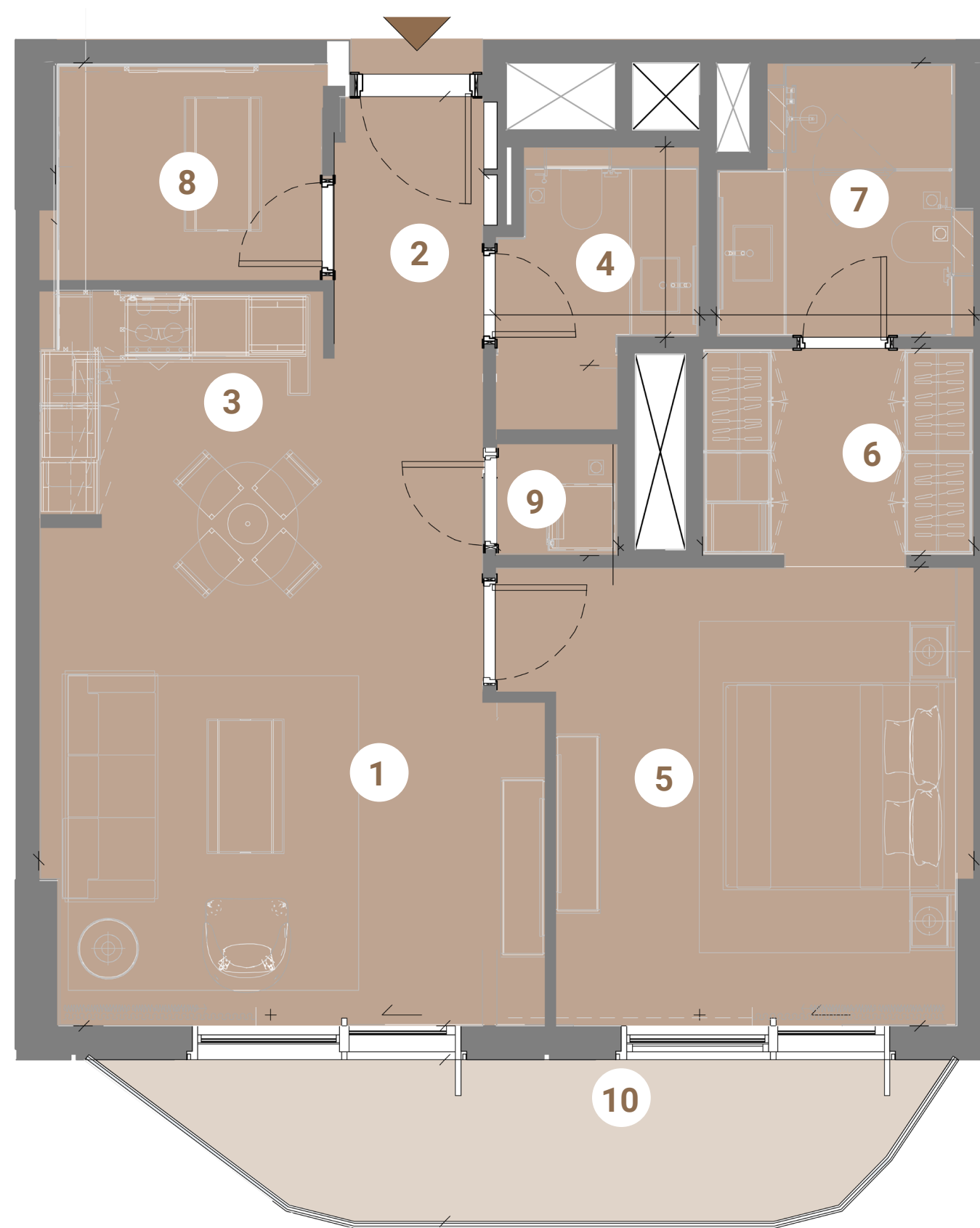
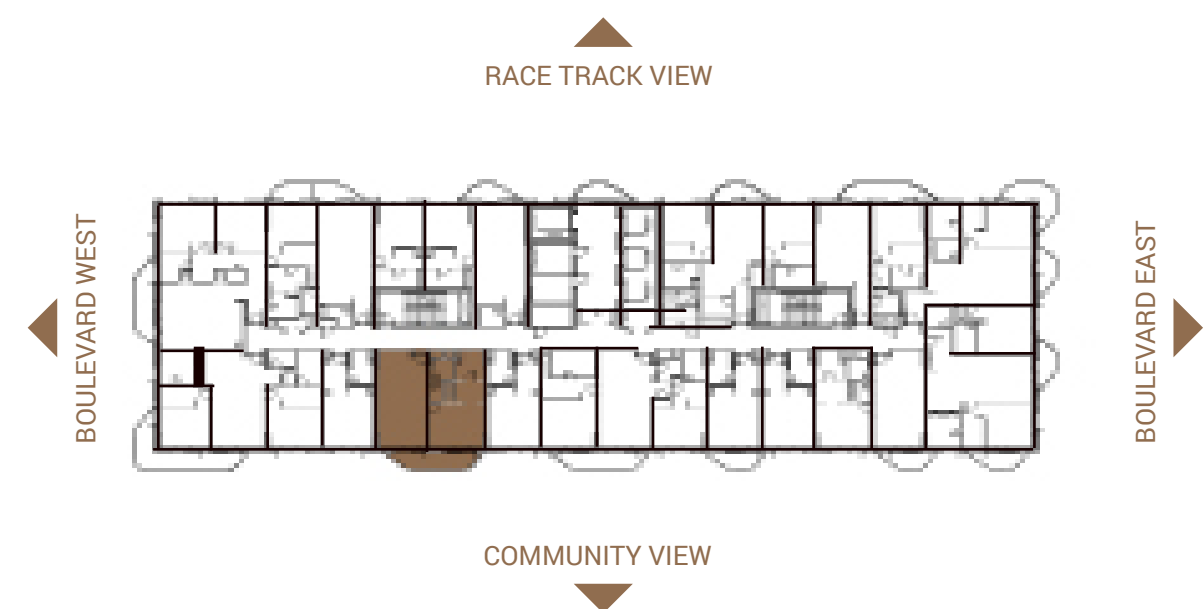
- 1 Bed Space 4.95m x 3.93m
- 2 Kitchen 2.70m x 1.85m
- 3 Bath 2.90m x 1.98m
- 4 Balcony 1.45m



1 Bedroom Apartment - Type - 1

Unit Area	767.19 sq.ft
Balcony Area	116.14 sq.ft
Total Area	883.34 sq.ft

Keyplan Level 3 (Typ. Odd Levels upto L17)



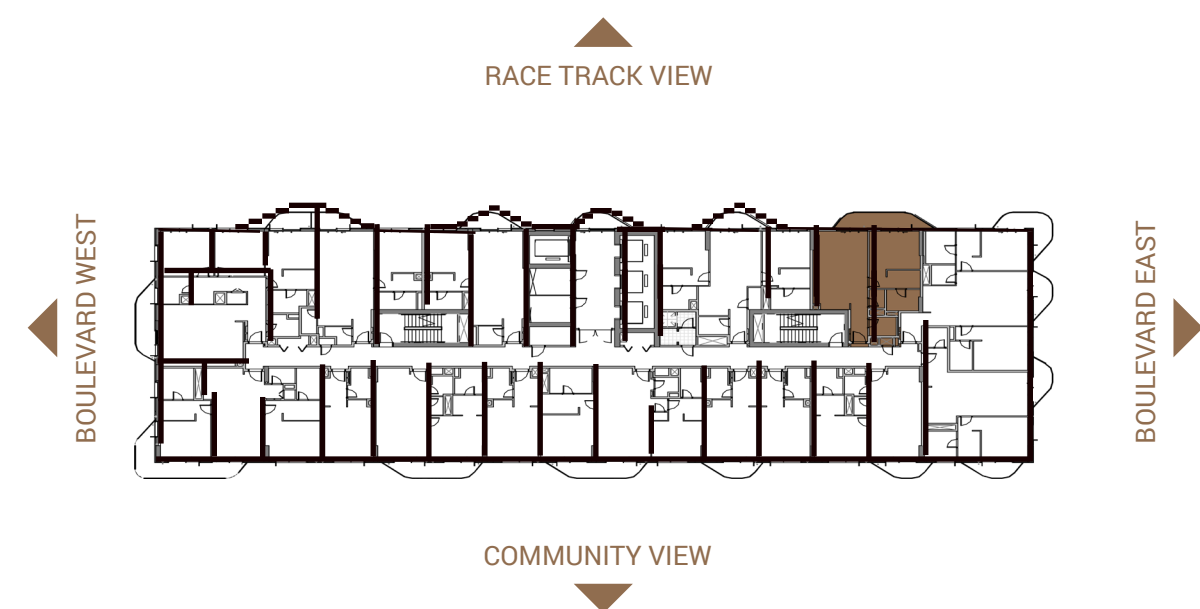
1	Living/Dining	4.10m x 4.35m
2	Entry	2.50m x 1.30m
3	Kitchen	2.35m x 2.68m
4	Powder Room	2.55m x 1.58m
5	M.Bedroom	4.10m x 3.60m
6	WIC	1.95m x 2.43m
7	M.Bath	2.45m x 2.15m
8	Maid's Room	2.00m x 2.43m
9	LAU	0.95m x 1.10m
10	Balcony	1.45m



1 Bedroom Apartment - Type - 2

Unit Area	789.53 sq.ft
Balcony Area	116.47 sq.ft
Total Area	906.00 sq.ft

Keyplan Level 3 (Typ. Odd Levels upto L17)



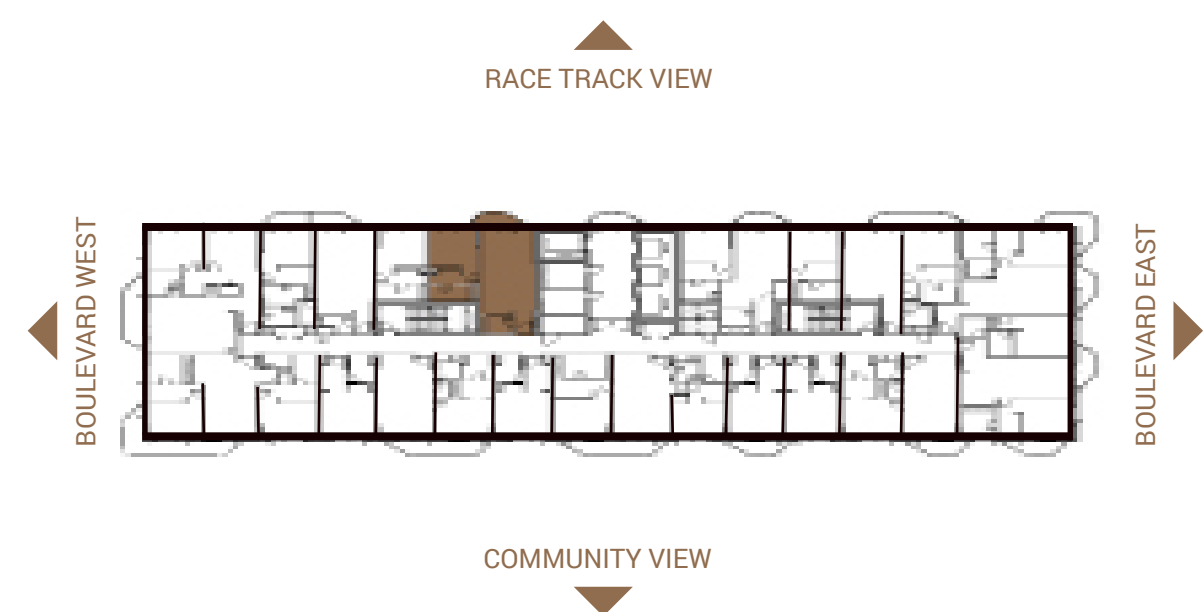
1	Living/Dining	4.67m x 4.08m
2	Entry	3.60m x 1.30m
3	Kitchen	2.73m x 2.93m
4	Laundry/Store	0.90m x 0.80m
5	Powder Room	2.38m x 2.10m
6	M.Bedroom	3.85m x 3.88m
7	M.Bath	1.60m x 3.00m
8	Maid's Room	1.85m x 3.80m
9	Balcony	1.45m



1 Bedroom Apartment - Type - 3

Unit Area	777.43 sq.ft
Balcony Area	61.57 sq.ft
Total Area	839.00 sq.ft

Keyplan Level 3 (Typ. Odd Levels upto L17)

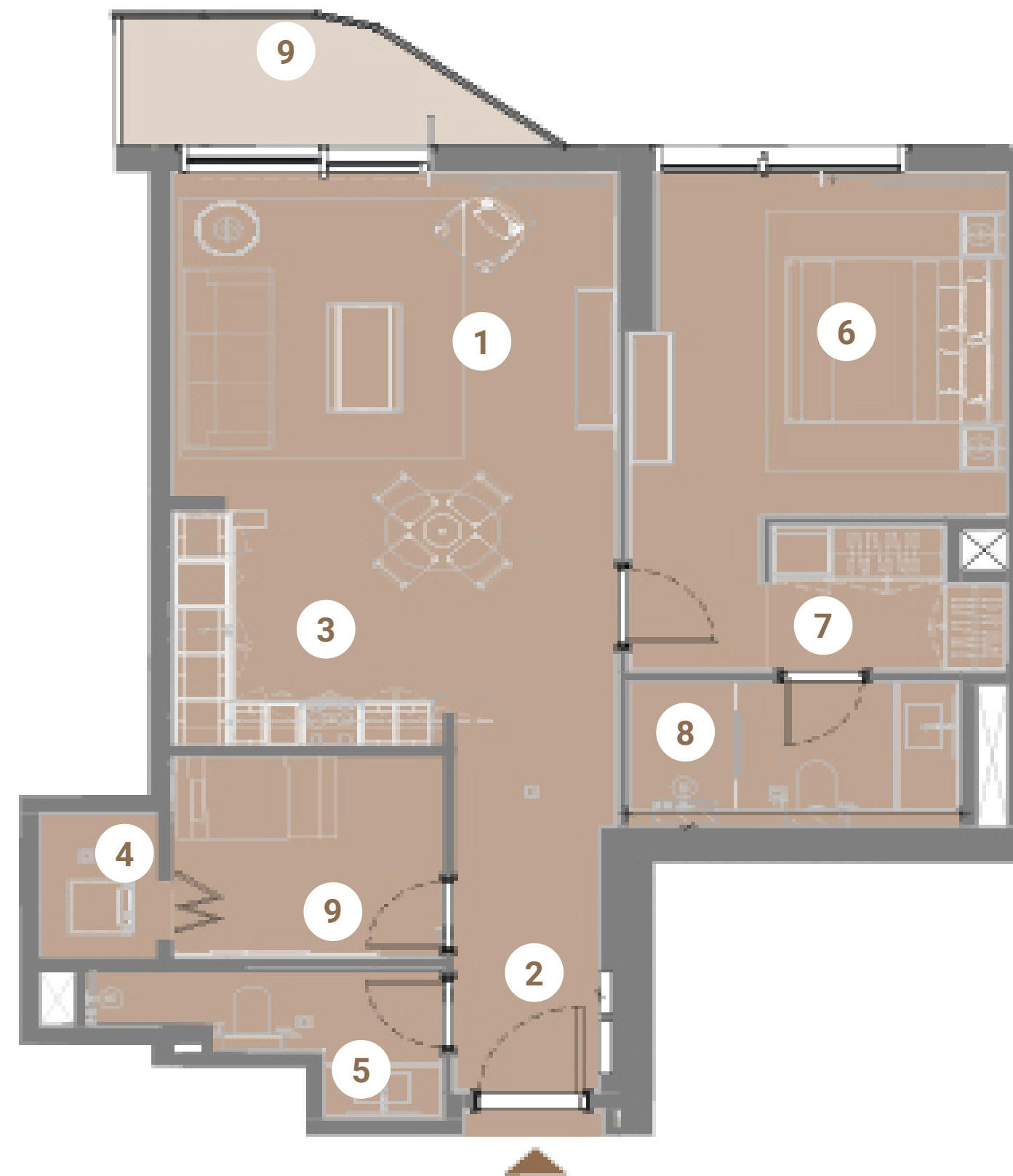
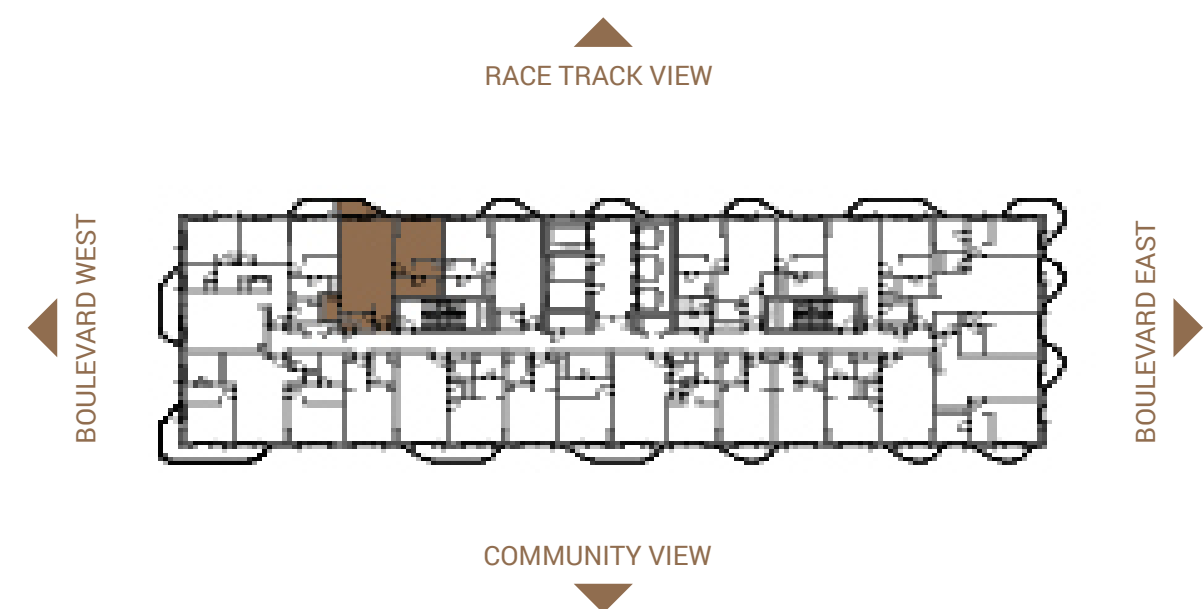


1	Living/Dining	3.70m x 3.88m
2	Entry	2.15m x 1.40m
3	Kitchen	1.95m x 2.40m
4	Powder Room	2.80m x 1.85m
5	M.Bedroom	3.90m x 3.35m
6	WIC	1.75m x 2.35m
7	M.Bath	1.65m x 2.90m
8	Laundry/Store	0.90m x 0.80m
9	Maid's Room	2.00m x 2.30m
10	Balcony	1.44m

1 Bedroom Apartment - Type - 4

Unit Area	828.78 sq.ft
Balcony Area	61.35 sq.ft
Total Area	890.13 sq.ft

Keyplan Level 3 (Typ. Odd Levels upto L17)

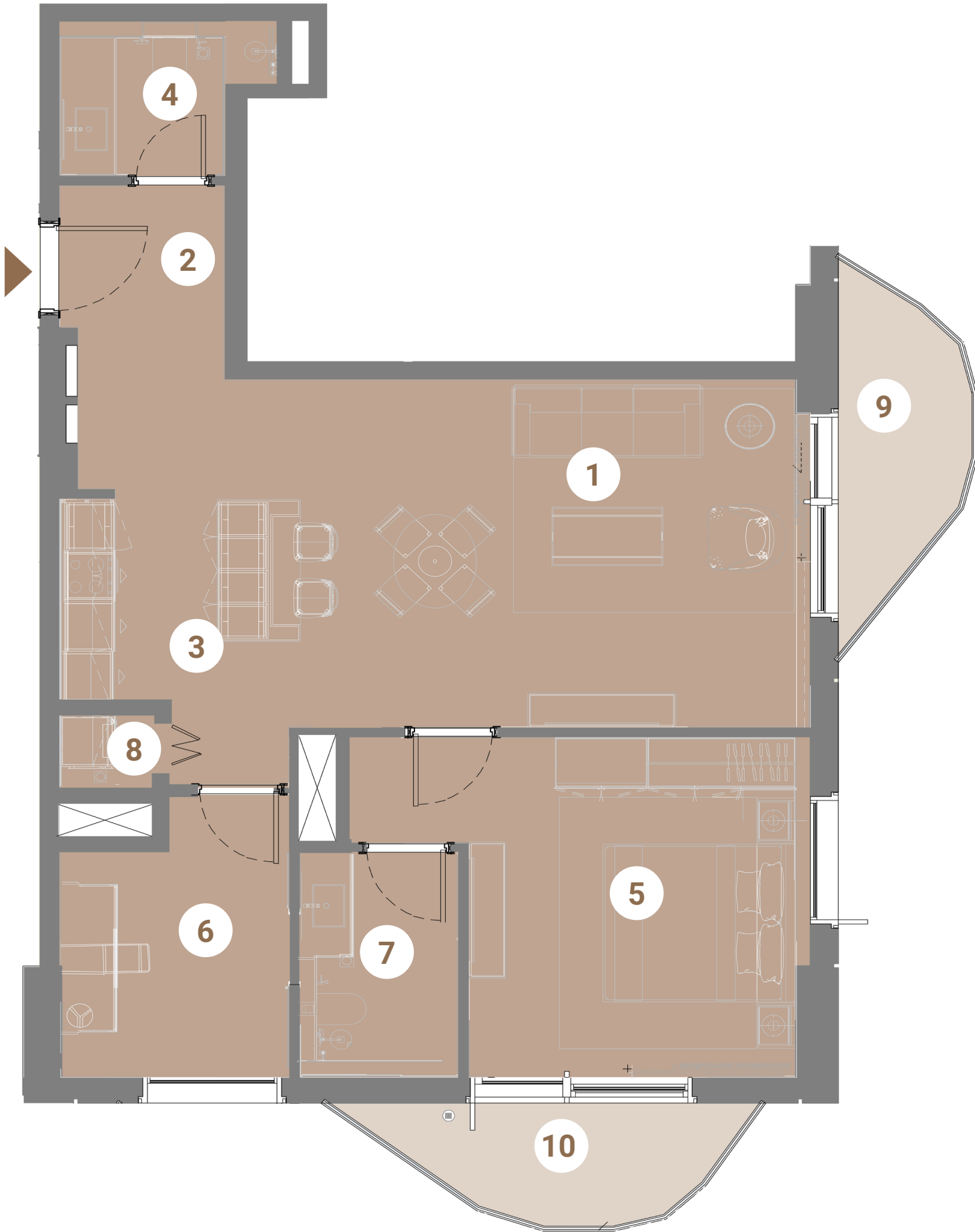
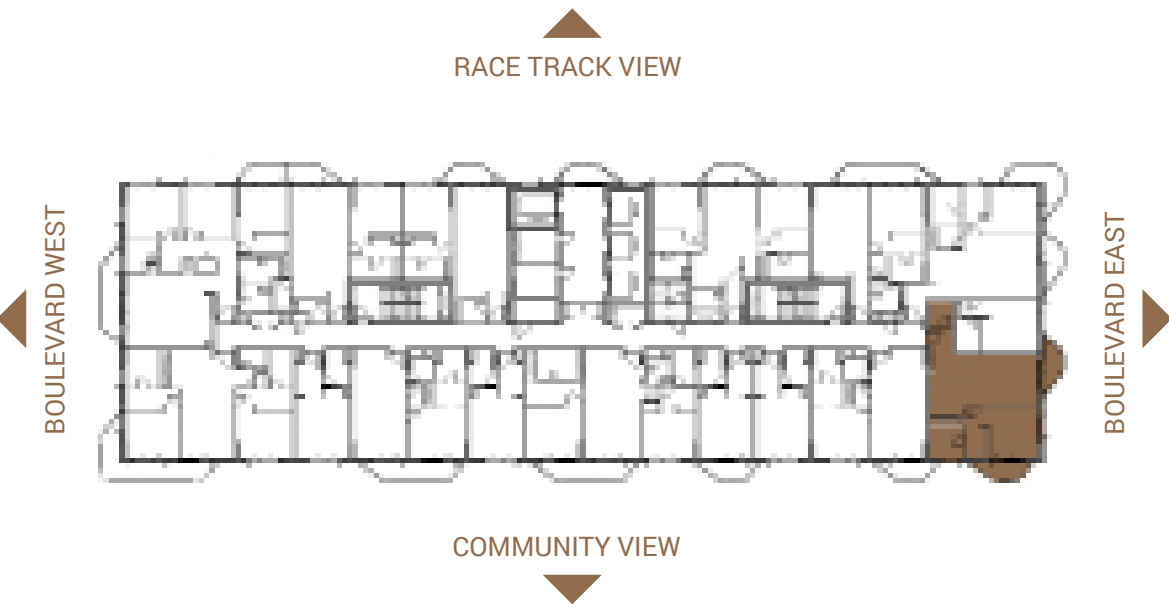


1	Living/Dining	3.62m x 4.28m
2	Entry	3.00m x 1.40m
3	Kitchen	2.73m x 2.70m
4	Laundry/Store	1.20m x 1.15m
5	Powder Room	2.15m x 3.35m
6	M. Bedroom	3.90m x 3.38m
7	WIC	1.75m x 2.35m
8	M. Bath	1.65m x 3.18m
9	Maid's Room	2.00m x 2.60m
10	Balcony	1.45m

1 Bedroom Apartment - Type - 5

Unit Area	827.71 sq.ft
Balcony Area	124.11 sq.ft
Total Area	951.82 sq.ft

Keyplan Level 3 (Typ. Odd Levels upto L17)



1	Living/Dining	3.90m x 5.63m
2	Entry	3.10m x 1.60m
3	Kitchen	2.80m x 2.62m
4	Powder Room	2.10m x 2.55m
5	M.Bedroom	4.20m x 3.55m
6	Study	2.55m x 2.50m
7	M.Bath	2.65m x 1.73m
8	LAU	0.90m x 0.90m
9	Balcony	1.45m
10	Balcony	1.45m

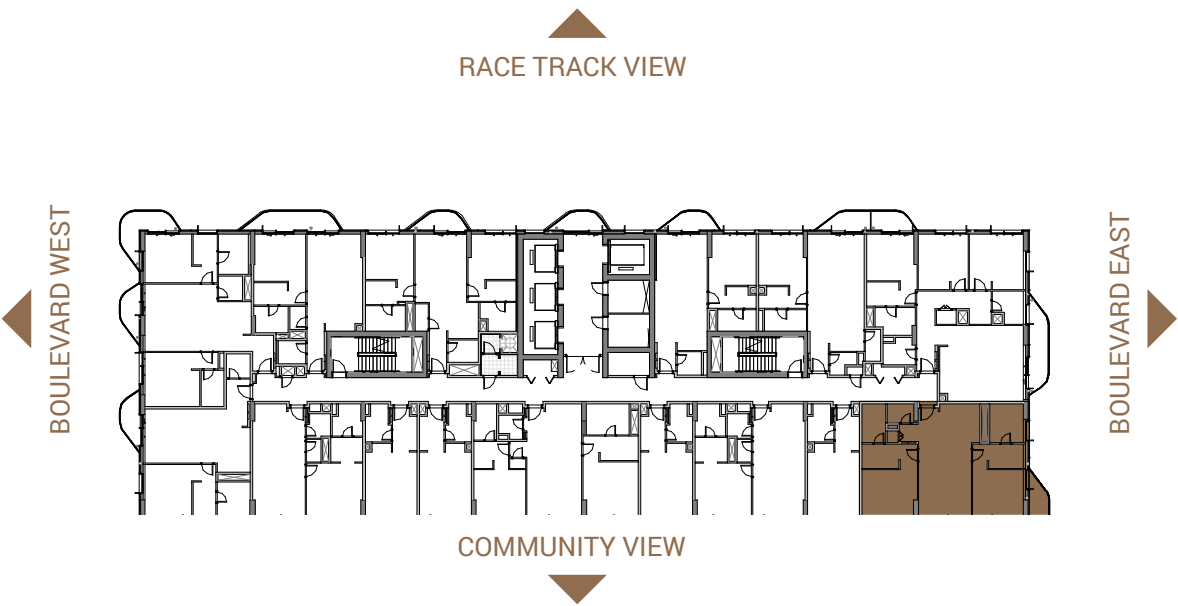


Unit Area	1,148.31 sq.ft
Balcony Area	202.47 sq.ft
Total Area	1,350.78 sq.ft



- | | | |
|----|---------------|---------------|
| 1 | Living/Dining | 5.75m x 4.40m |
| 2 | Entry | 2.55m x 1.53m |
| 3 | Kitchen | 2.85m x 3.90m |
| 4 | Laundry/Store | 0.90m x 0.80m |
| 5 | Powder Room | 2.90m x 2.10m |
| 6 | M.Bedroom | 3.60m x 3.90m |
| 7 | WIC | 1.95m x 3.00m |
| 8 | M.Bath | 2.95m x 1.73m |
| 9 | Bedroom 01 | 3.95m x 3.45m |
| 10 | Maid's Room | 2.20m x 2.45m |
| 11 | Bath 01 | 1.60m x 4.00m |
| 12 | Balcony | 1.45m |

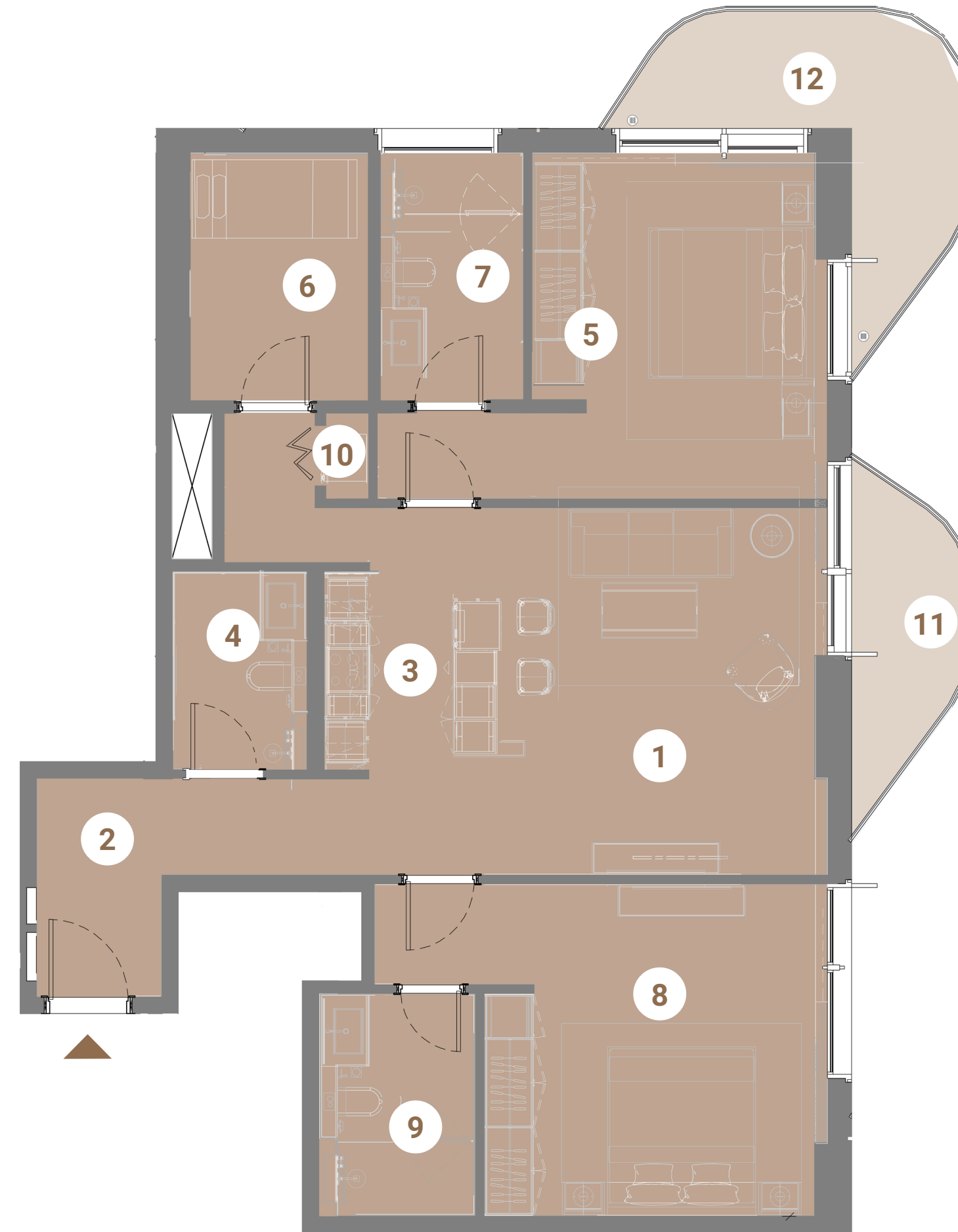
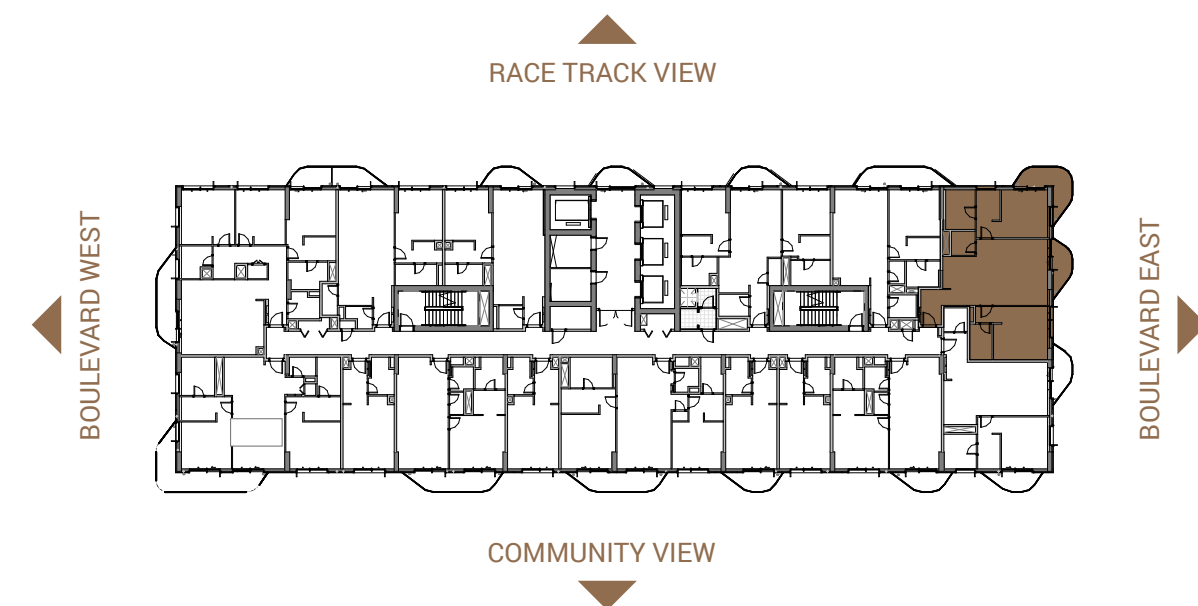
Keyplan Level 3 (Typ. Odd Levels upto L17)



2 Bedroom Apartment - Type - 3

Unit Area	1,121.30 sq.ft
Balcony Area	175.77 sq.ft
Total Area	1,297.07 sq.ft

Keyplan Level 3 (Typ. Odd Levels upto L17)



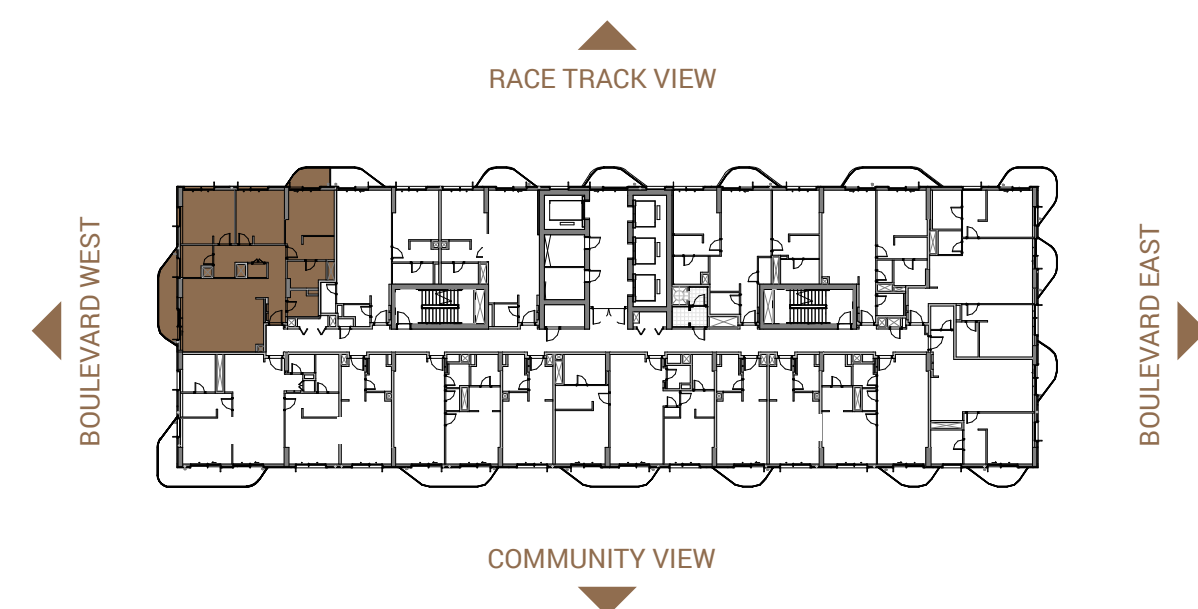
1	Living/Dining	5.10m x 3.79m
2	Entry	2.70m x 1.58m
3	Kitchen	2.80m x 2.62m
4	Powder Room	2.60m x 1.65m
5	M.Bedroom	3.70m x 3.88m
6	Maid's Room	2.50m x 2.10m
7	M.Bath	2.50m x 1.80m
8	Bedroom 01	4.10m x 3.65m
9	Bath 01	2.70m x 2.23m
10	LAU	1.10m x 0.90m
11	Balcony	1.45m
12	Balcony	1.45m



3 Bedroom Apartment - Type - 1

Unit Area	1,454.66 sq.ft
Balcony Area	174.38 sq.ft
Total Area	1,629.04 sq.ft

Keyplan Level 3 (Typ. Odd Levels upto L17)

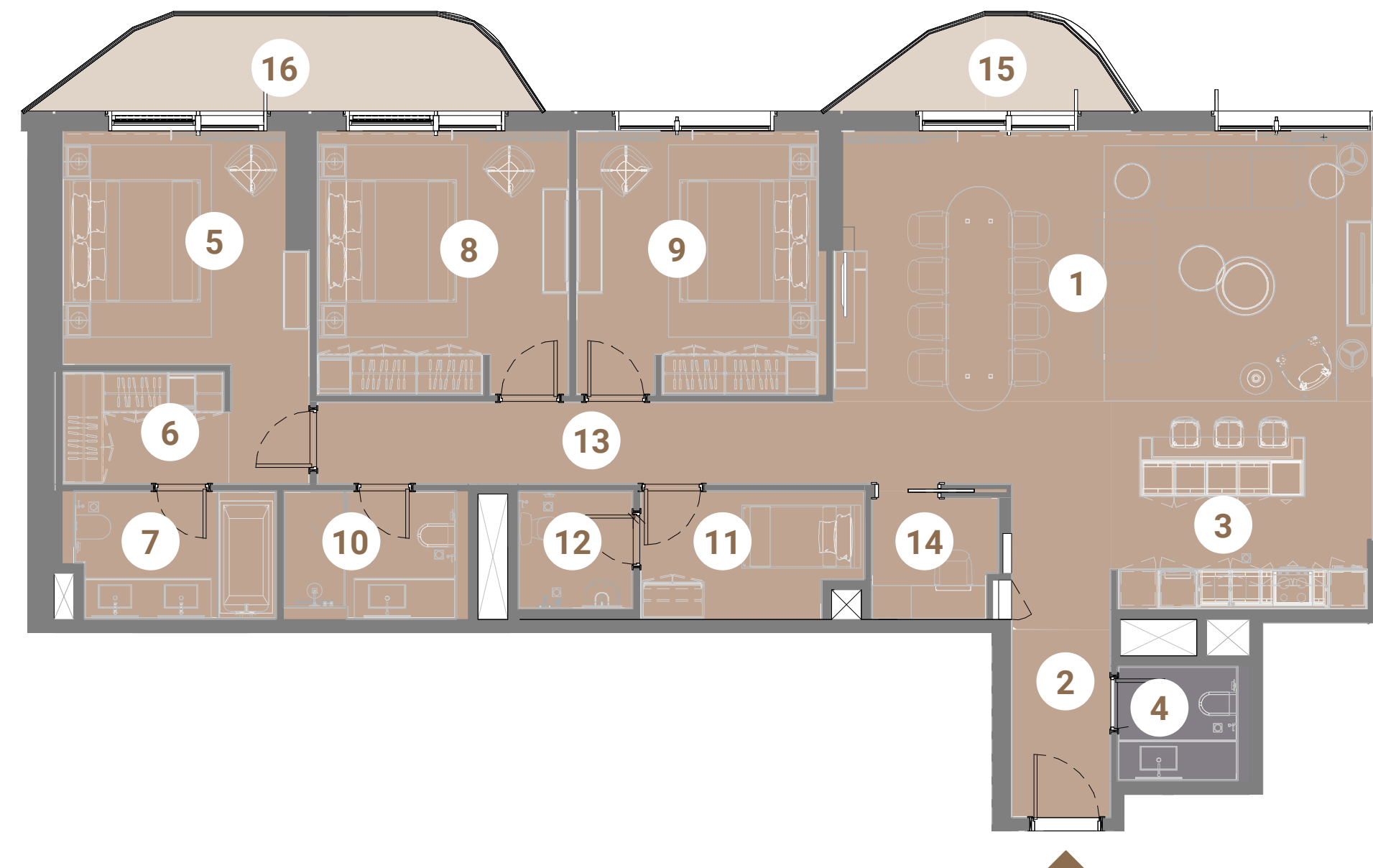


1	Living/Dining	5.75m x 3.77m
2	Entry	1.95m x 1.40m
3	Kitchen	4.25m x 2.73m
4	Powder Room	2.10m x 2.45m
5	Laundry/Store	1.08m x 1.50m
6	M.Bedroom	4.23m x 4.10m
7	Maid's Room	1.93m x 3.05m
8	M.Bath	2.53m x 2.95m
9	Bedroom 01	4.23m x 3.78m
10	Common Bath	1.98m x 2.63m
11	Bedroom 02	3.50m x 3.58m
12	Hallway	1.35m x 5.08m
13	Balcony	1.45m
14	Balcony	1.45m



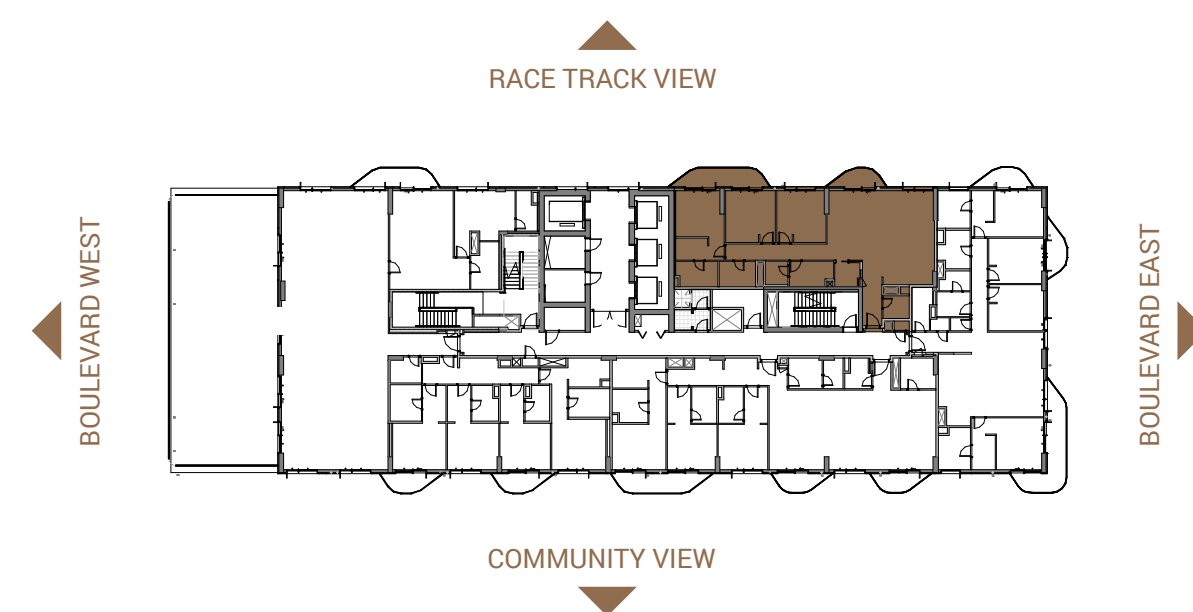
3 Bedroom Apartment - Type - 3

Unit Area	1,736.76 sq.ft
Balcony Area	179.33 sq.ft
Total Area	1,916.08 sq.ft



1	Living/Dining	4.10m x 8.25m
2	Entry	3.75m x 1.50m
3	Kitchen	2.62m x 4.05m
4	Powder Room	1.75m x 2.00m
5	M.Bedroom	3.55m x 3.75m
6	WIC	1.80m x 2.45m
7	M.Bath	1.95m x 3.25m
8	Bedroom 01	4.00m x 3.80m
9	Bedroom 02	4.00m x 3.83m
10	Common Bath	1.95m x 2.80m
11	Maid's Room	1.95m x 3.41m
12	Maid's Bath	1.95m x 1.75m
13	Hallway	1.25m x 7.83m
14	Study	1.85m x 1.93m
15	Balcony	1.45m
16	Balcony	1.45m

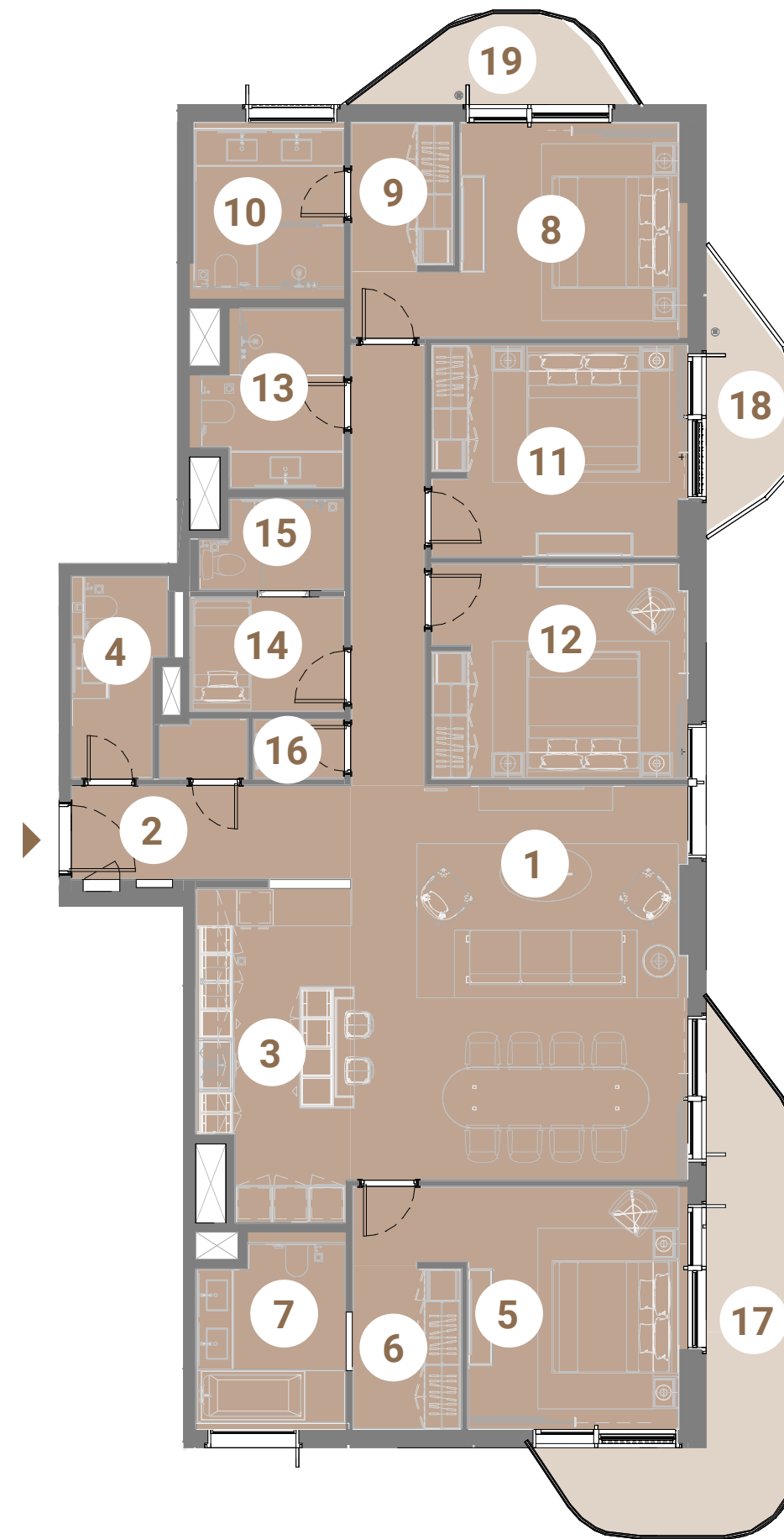
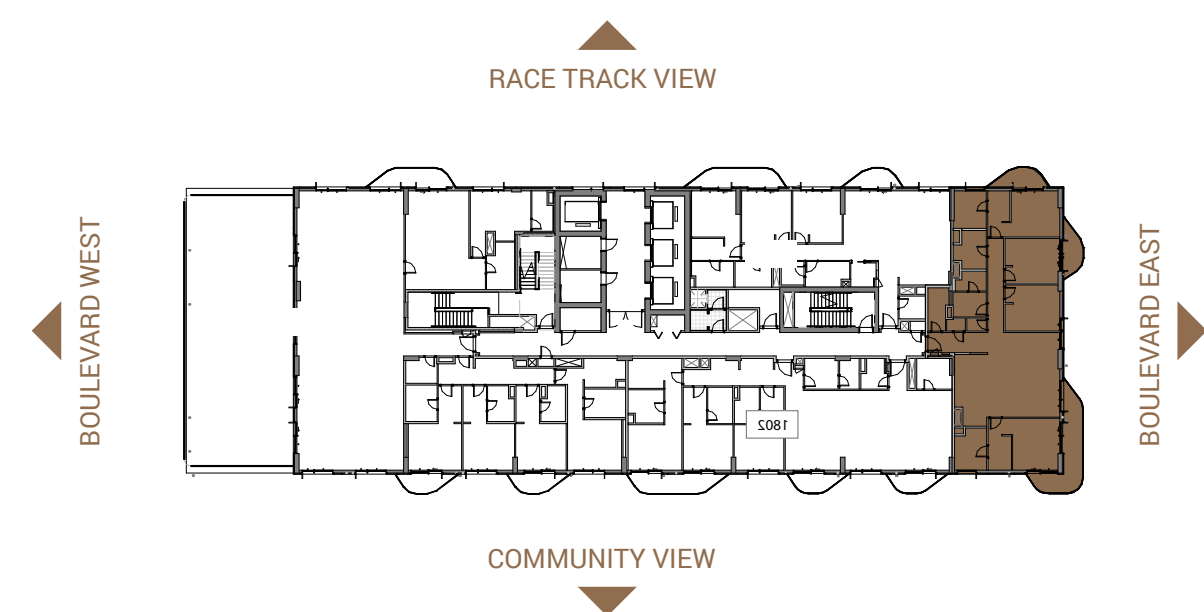
Keyplan Level 18



4 Bedroom Apartment - Type - 1

Unit Area	2,021.46 sq.ft
Balcony Area	308.82 sq.ft
Total Area	2,330.28 sq.ft

Keyplan Level 18



1	Living/Dining	6.50m x 5.49m
2	Entry	1.55m x 4.60m
3	Kitchen	5.50m x 2.62m
4	Powder Room	3.35m x 1.85m
5	M.Bedroom	4.00m x 3.63m
6	WIC	2.75m x 1.80m
7	M.Bath	3.25m x 2.48m
8	Bedroom 01	3.55m x 3.75m
9	WIC 01	2.45m x 1.80m
10	Bath 01	2.90m x 2.55m
11	Bedroom 02	3.50m x 4.23m
12	Bedroom 03	3.50m x 4.23m
13	Common Bath	2.98m x 2.55m
14	Maid's Room	1.90m x 2.55m
15	Maid's Bath	1.53m x 2.55m
16	Laundry/Store	1.00m x 2.55m
17	Balcony	1.45m
18	Balcony	1.45m
19	Balcony	1.45m



The background of the image features a series of overlapping, wavy horizontal bands. Each band is filled with a fine, diagonal grid pattern, creating a textured, layered effect. The overall color palette is a range of brown tones, from light tan to deep chocolate brown.

UNIT PLAN PENTHOUSE



Unit Area	4,449.80 sq.ft
Balcony Area	2,113.82 sq.ft
Total Area	6,563.62 sq.ft

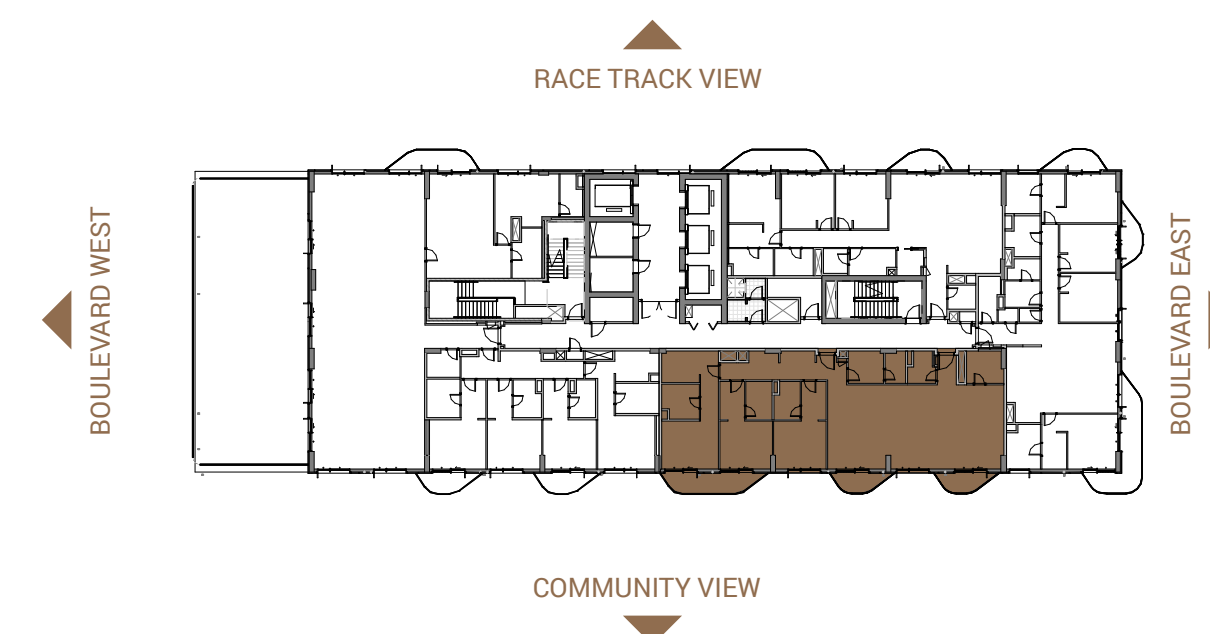
Keyplan - Level 18





Unit Area	2,305.31 sq.ft
Balcony Area	240.36 sq.ft
Total Area	2,545.66 sq.ft

Keyplan - Level 18





Unit Area	2,844.04 sq.ft
Balcony Area	2,097.99 sq.ft
Total Area	4,942.03 sq.ft

Keyplan - Level 19





Unit Area	3,004.32 sq.ft
Balcony Area	2,111.45 sq.ft
Total Area	5,115.76 sq.ft

Keyplan - Level 20





Level 20

Unit Area	3,662.42 sq.ft
Balcony Area	761.12 sq.ft
Total Area	4,423.54 sq.ft

BOULEVARD WEST

RACE TRACK VIEW

BOULEVARD EAST

COMMUNITY VIEW



THANK YOU