

# ARiB

COLLECTIONS

FLOOR PLANS

# Studio - Unit 01

## Unit Floor Plan

### Unit Area

394 Sq.ft

### Balcony Area

98.38 Sq.ft

### Total Area

492.66 Sq.ft



**Disclaimer:** All dimensions are in imperial and metric, and measured from finish to finish excluding construction tolerances. 2. All materials, dimensions, and drawings are approximate only. 3. Information is subject to change without notice, at developer's absolute discretion. 4. Actual area may vary from the stated area. 5. Drawings are not to scale. 6. All images used are for illustrative purposes only and do not represent the actual size, features, specifications, fittings, and furnishings. 7. The developer reserves the right to make revisions / alterations, at its absolute discretion, without any liability whatsoever.

# One Bedroom - Unit 02

## Unit Floor Plan

### Unit Area

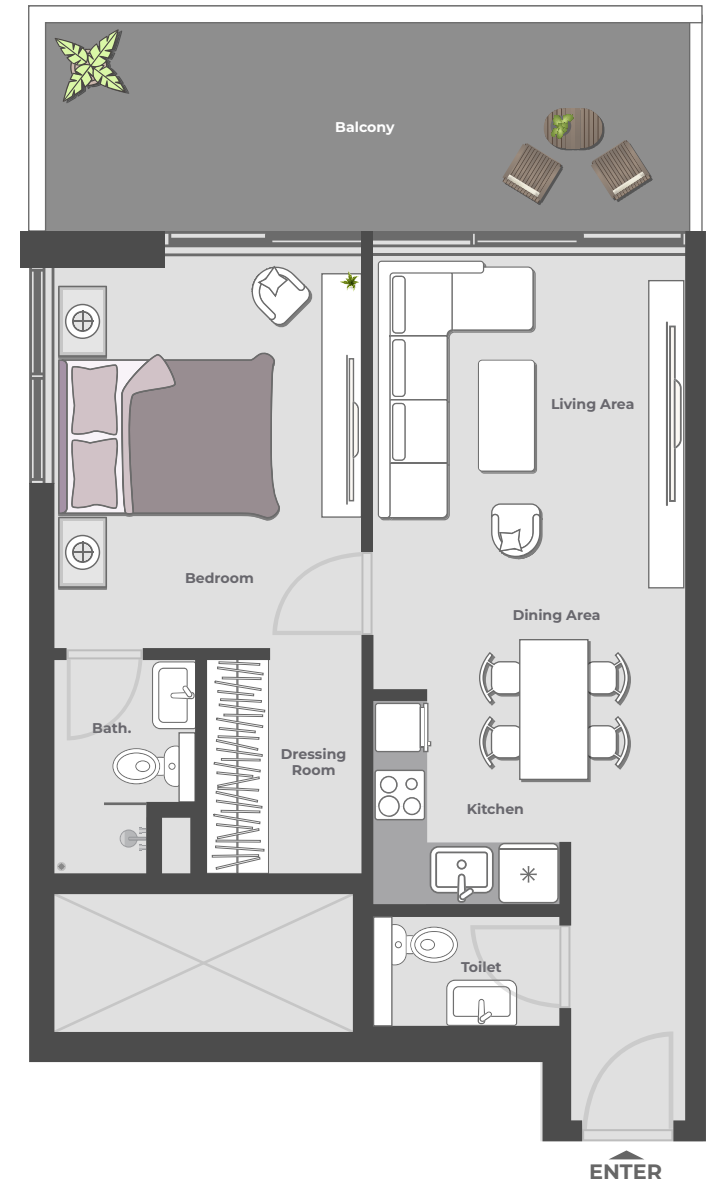
646 Sq.ft

### Balcony Area

203.65 Sq.ft

### Total Area

849.59 Sq.ft



**Disclaimer:** All dimensions are in imperial and metric, and measured from finish to finish excluding construction tolerances. 2. All materials, dimensions, and drawings are approximate only. 3. Information is subject to change without notice, at developer's absolute discretion. 4. Actual area may vary from the stated area. 5. Drawings are not to scale. 6. All images used are for illustrative purposes only and do not represent the actual size, features, specifications, fittings, and furnishings. 7. The developer reserves the right to make revisions / alterations, at its absolute discretion, without any liability whatsoever.

# Two Bedroom - Unit 03

## Unit Floor Plan

### Unit Area

933 Sq.ft

### Balcony Area

368.55 Sq.ft

### Total Area

1301.56 Sq.ft



**Disclaimer:** All dimensions are in imperial and metric, and measured from finish to finish excluding construction tolerances. 2. All materials, dimensions, and drawings are approximate only. 3. Information is subject to change without notice, at developer's absolute discretion. 4. Actual area may vary from the stated area. 5. Drawings are not to scale. 6. All images used are for illustrative purposes only and do not represent the actual size, features, specifications, fittings, and furnishings. 7. The developer reserves the right to make revisions / alterations, at its absolute discretion, without any liability whatsoever.



# One Bedroom - Unit 04

## Unit Floor Plan

### Unit Area

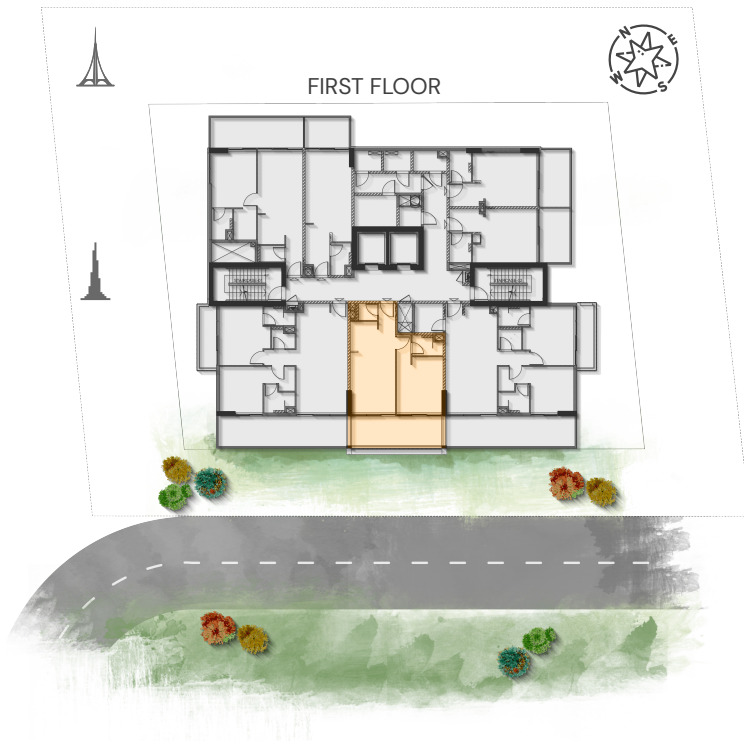
587 Sq.ft

### Balcony Area

205.05 Sq.ft

### Total Area

792 Sq.ft



**Disclaimer:** All dimensions are in imperial and metric, and measured from finish to finish excluding construction tolerances. 2. All materials, dimensions, and drawings are approximate only. 3. Information is subject to change without notice, at developer's absolute discretion. 4. Actual area may vary from the stated area. 5. Drawings are not to scale. 6. All images used are for illustrative purposes only and do not represent the actual size, features, specifications, fittings, and furnishings. 7. The developer reserves the right to make revisions / alterations, at its absolute discretion, without any liability whatsoever.

# Two Bedroom - Unit 05

## Unit Floor Plan

### Unit Area

994.58 Sq.ft

### Balcony Area

366.4 Sq.ft

### Total Area

1360.98 Sq.ft



**Disclaimer:** All dimensions are in imperial and metric, and measured from finish to finish excluding construction tolerances. 2. All materials, dimensions, and drawings are approximate only. 3. Information is subject to change without notice, at developer's absolute discretion. 4. Actual area may vary from the stated area. 5. Drawings are not to scale. 6. All images used are for illustrative purposes only and do not represent the actual size, features, specifications, fittings, and furnishings. 7. The developer reserves the right to make revisions / alterations, at its absolute discretion, without any liability whatsoever.

# Studio - Unit 06

## Unit Floor Plan

### Unit Area

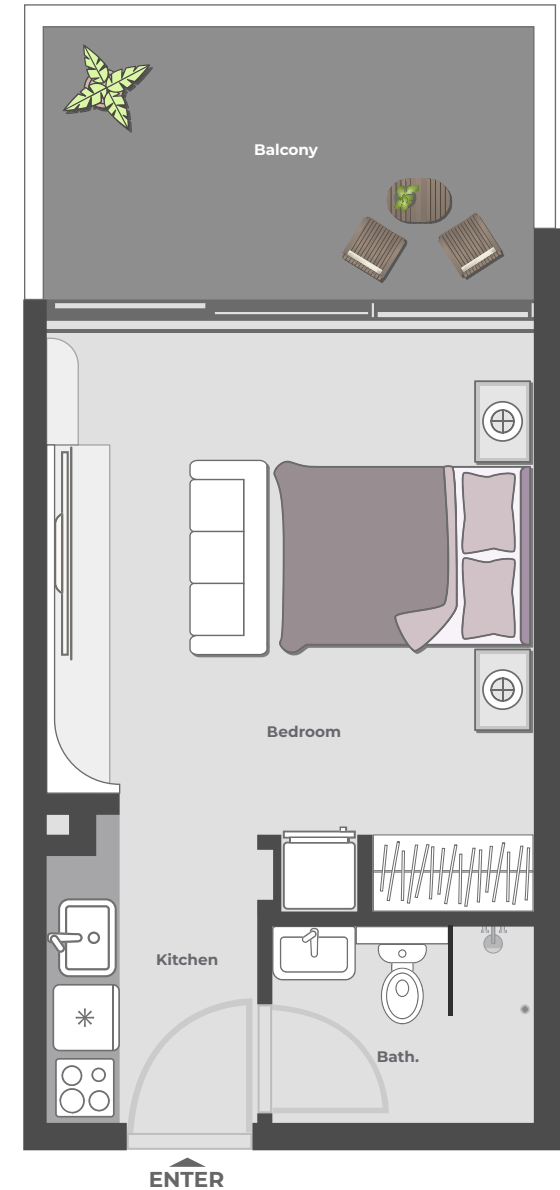
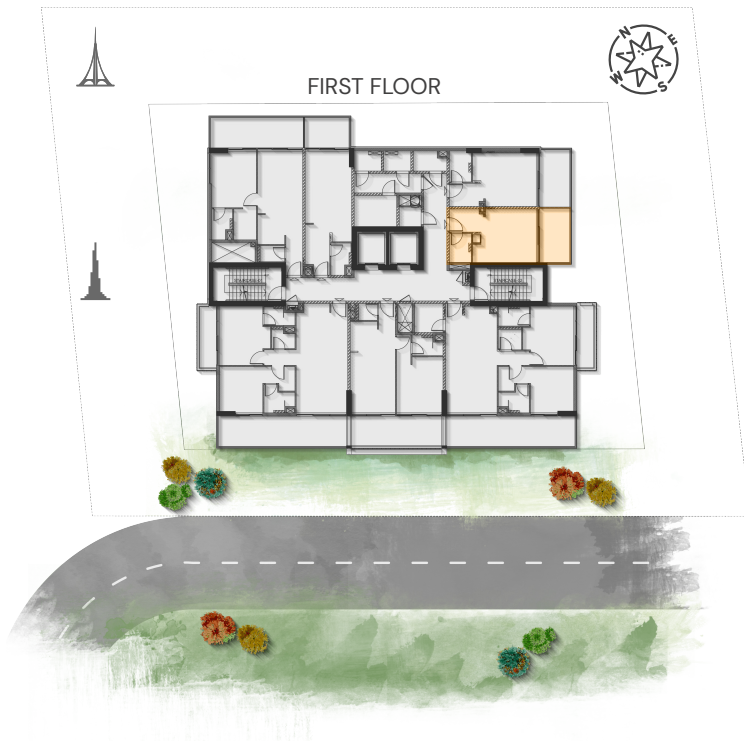
335.51 Sq.ft

### Balcony Area

123.67 Sq.ft

### Total Area

459.18 Sq.ft



**Disclaimer:** All dimensions are in imperial and metric, and measured from finish to finish excluding construction tolerances. 2. All materials, dimensions, and drawings are approximate only. 3. Information is subject to change without notice, at developer's absolute discretion. 4. Actual area may vary from the stated area. 5. Drawings are not to scale. 6. All images used are for illustrative purposes only and do not represent the actual size, features, specifications, fittings, and furnishings. 7. The developer reserves the right to make revisions / alterations, at its absolute discretion, without any liability whatsoever.

# Studio - Unit 07

## Unit Floor Plan

### Unit Area

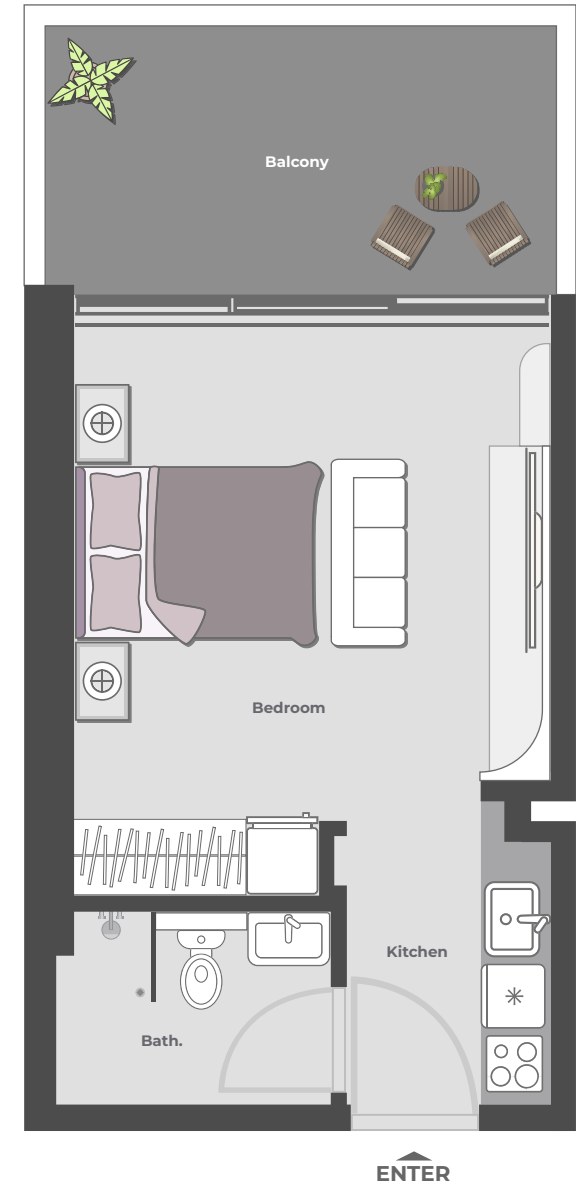
339 Sq.ft

### Balcony Area

124.1 Sq.ft

### Total Area

462.62 Sq.ft



**Disclaimer:** All dimensions are in imperial and metric, and measured from finish to finish excluding construction tolerances. 2. All materials, dimensions, and drawings are approximate only. 3. Information is subject to change without notice, at developer's absolute discretion. 4. Actual area may vary from the stated area. 5. Drawings are not to scale. 6. All images used are for illustrative purposes only and do not represent the actual size, features, specifications, fittings, and furnishings. 7. The developer reserves the right to make revisions / alterations, at its absolute discretion, without any liability whatsoever.

# Studio - Typical 01

## Typical Floor Plan

### Unit Area

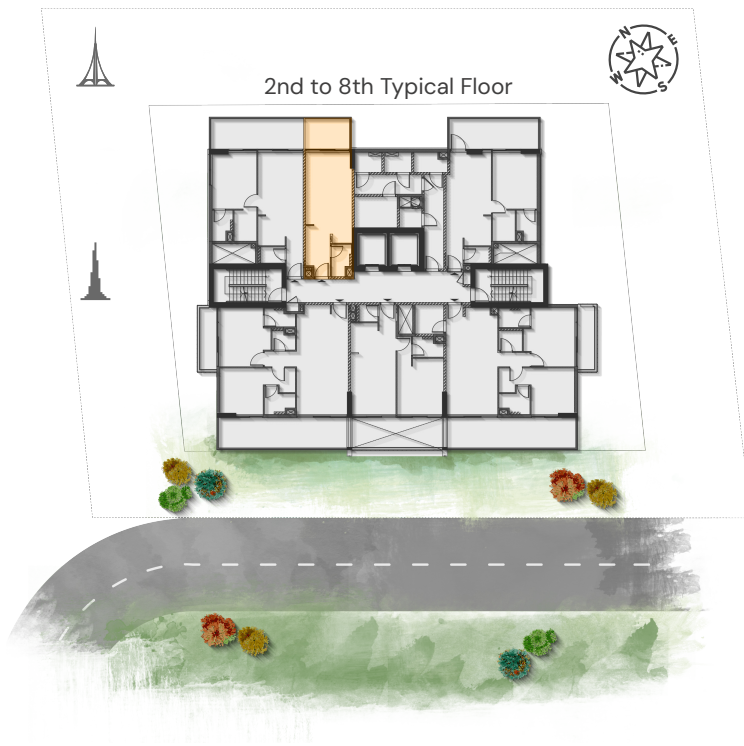
394 Sq.ft

### Balcony Area

98.38 Sq.ft

### Total Area

492.66 Sq.ft



**Disclaimer:** All dimensions are in imperial and metric, and measured from finish to finish excluding construction tolerances. 2. All materials, dimensions, and drawings are approximate only. 3. Information is subject to change without notice, at developer's absolute discretion. 4. Actual area may vary from the stated area. 5. Drawings are not to scale. 6. All images used are for illustrative purposes only and do not represent the actual size, features, specifications, fittings, and furnishings. 7. The developer reserves the right to make revisions / alterations, at its absolute discretion, without any liability whatsoever.

# One Bedroom - Typical 02

## Typical Floor Plan

### Unit Area

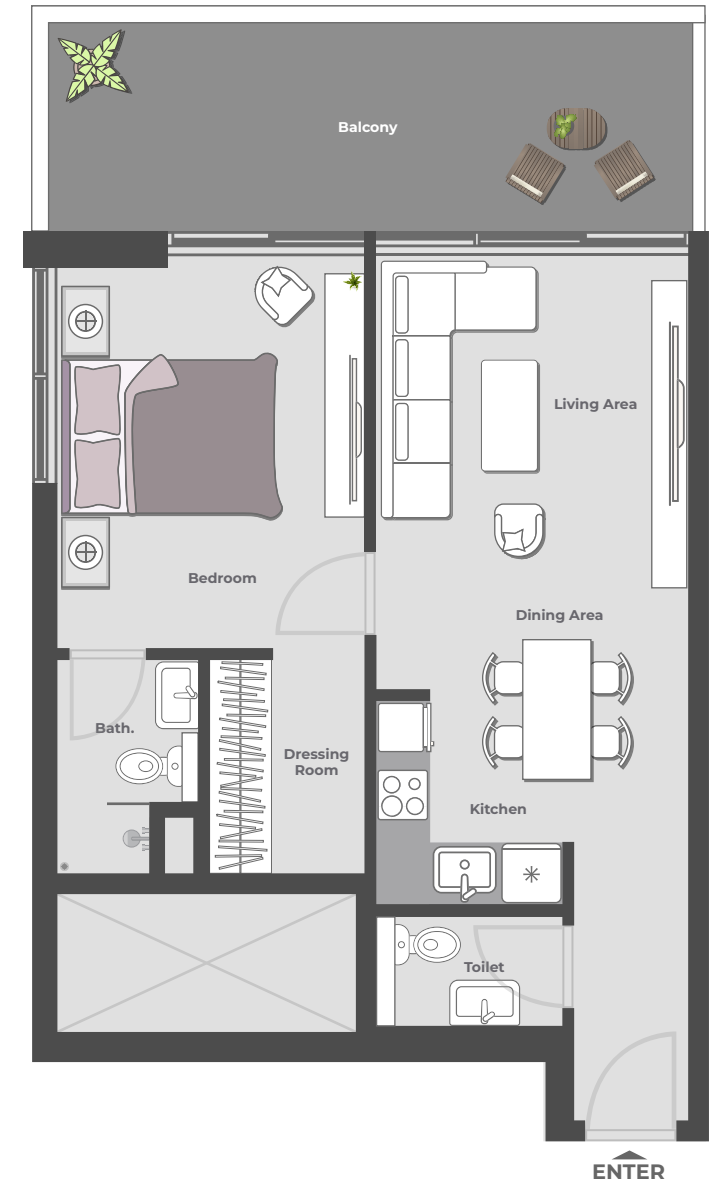
646 Sq.ft

### Balcony Area

203.65 Sq.ft

### Total Area

849.59 Sq.ft



**Disclaimer:** All dimensions are in imperial and metric, and measured from finish to finish excluding construction tolerances. 2. All materials, dimensions, and drawings are approximate only. 3. Information is subject to change without notice, at developer's absolute discretion. 4. Actual area may vary from the stated area. 5. Drawings are not to scale. 6. All images used are for illustrative purposes only and do not represent the actual size, features, specifications, fittings, and furnishings. 7. The developer reserves the right to make revisions / alterations, at its absolute discretion, without any liability whatsoever.

# Two Bedroom - Typical 03

## Typical Floor Plan

### Unit Area

933 Sq.ft

### Balcony Area

368.55 Sq.ft

### Total Area

1301.56 Sq.ft



**Disclaimer:** All dimensions are in imperial and metric, and measured from finish to finish excluding construction tolerances. 2. All materials, dimensions, and drawings are approximate only. 3. Information is subject to change without notice, at developer's absolute discretion. 4. Actual area may vary from the stated area. 5. Drawings are not to scale. 6. All images used are for illustrative purposes only and do not represent the actual size, features, specifications, fittings, and furnishings. 7. The developer reserves the right to make revisions / alterations, at its absolute discretion, without any liability whatsoever.



# One Bedroom - Typical 04

## Typical Floor Plan

### Unit Area

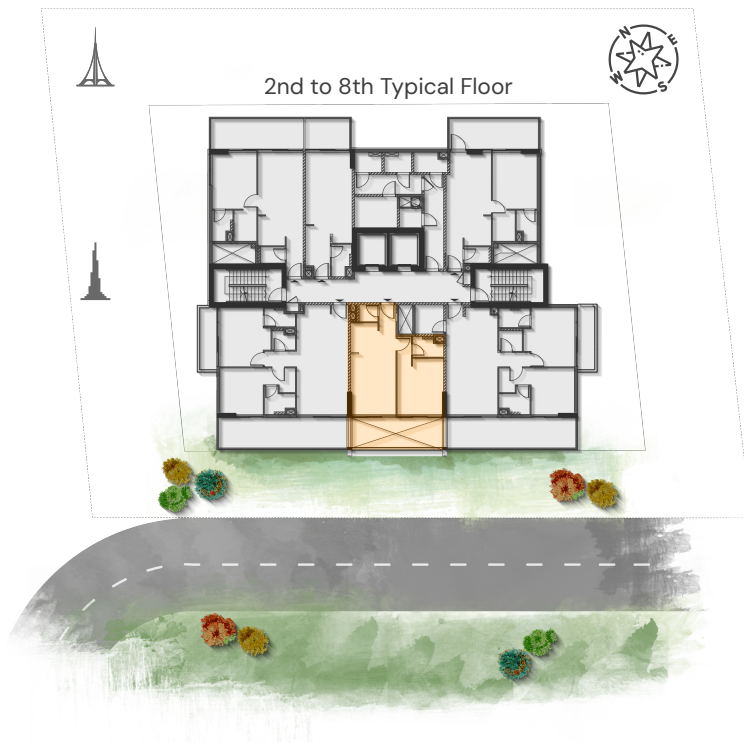
587 Sq.ft

### Balcony Area

205.05 Sq.ft

### Total Area

792 Sq.ft



**Disclaimer:** All dimensions are in imperial and metric, and measured from finish to finish excluding construction tolerances. 2. All materials, dimensions, and drawings are approximate only. 3. Information is subject to change without notice, at developer's absolute discretion. 4. Actual area may vary from the stated area. 5. Drawings are not to scale. 6. All images used are for illustrative purposes only and do not represent the actual size, features, specifications, fittings, and furnishings. 7. The developer reserves the right to make revisions / alterations, at its absolute discretion, without any liability whatsoever.

# Two Bedroom - Typical 05

## Typical Floor Plan

**Unit Area**

994.58 Sq.ft

**Balcony Area**

366.4 Sq.ft

**Total Area**

1360.98 Sq.ft



**Disclaimer:** All dimensions are in imperial and metric, and measured from finish to finish excluding construction tolerances. 2. All materials, dimensions, and drawings are approximate only. 3. Information is subject to change without notice, at developer's absolute discretion. 4. Actual area may vary from the stated area. 5. Drawings are not to scale. 6. All images used are for illustrative purposes only and do not represent the actual size, features, specifications, fittings, and furnishings. 7. The developer reserves the right to make revisions / alterations, at its absolute discretion, without any liability whatsoever.

# One Bedroom - Typical 06

## Typical Floor Plan

### Unit Area

635.50 Sq.ft

### Balcony Area

204.83 Sq.ft

### Total Area

840.33 Sq.ft



**Disclaimer:** All dimensions are in imperial and metric, and measured from finish to finish excluding construction tolerances. 2. All materials, dimensions, and drawings are approximate only. 3. Information is subject to change without notice, at developer's absolute discretion. 4. Actual area may vary from the stated area. 5. Drawings are not to scale. 6. All images used are for illustrative purposes only and do not represent the actual size, features, specifications, fittings, and furnishings. 7. The developer reserves the right to make revisions / alterations, at its absolute discretion, without any liability whatsoever.

# ARIB

DEVELOPMENTS

[www.arib.ae](http://www.arib.ae)

