



Floor Plans

February 2025

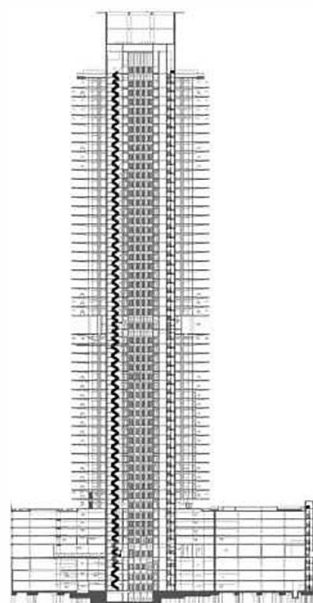


1 BEDROOM TYPE A / UNIT 06

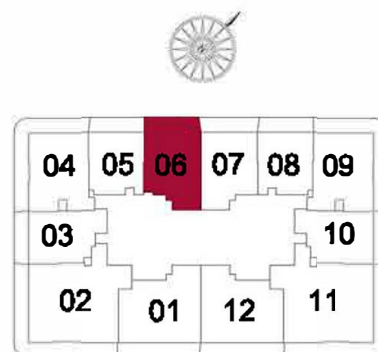
Unit Area = 846.47 SQ.FT. / 78.64 SQ.M.

Balcony Area = 188.69 SQ.FT. / 17.53 SQ.M.

Total Area = 1035.17 SQ.FT. / 96.17 SQ.M.



KEY SECTION



KEY PLAN

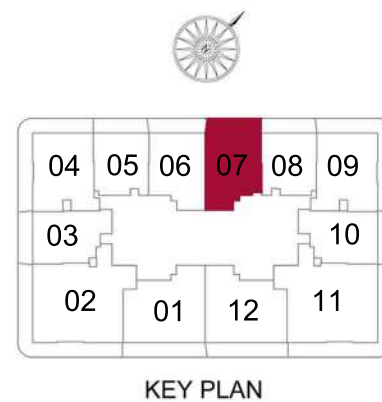
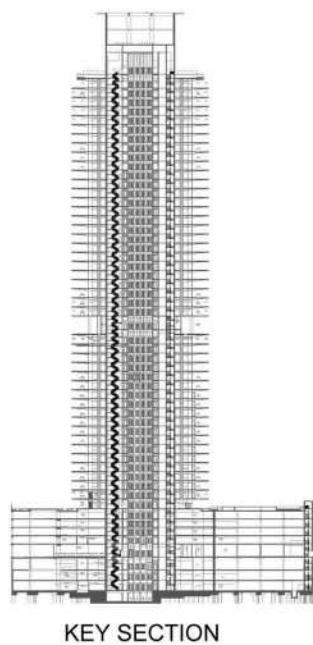


1 BEDROOM TYPE A / UNIT 07

Unit Area = 840.66 SQ.FT. / 78.10 SQ.M.

Balcony Area = 174.48 SQ.FT. / 16.21 SQ.M.

Total Area = 1,015.14 SQ.FT. / 94.31 SQ.M.

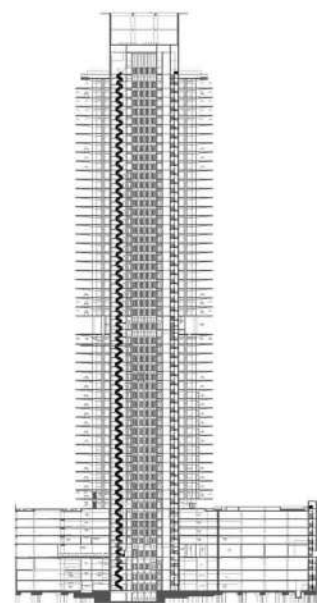


1 BEDROOM TYPE B / UNIT 05

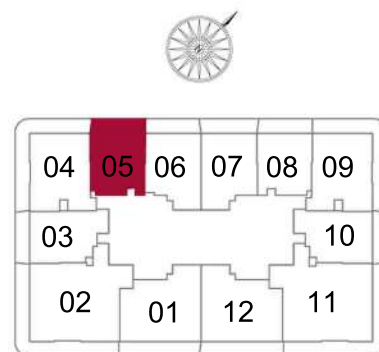
Unit Area = 715.91 SQ.FT. / 66.51 SQ.M.

Balcony Area = 173.84 SQ.FT. / 16.15 SQ.M.

Total Area = 889.74 SQ.FT. / 82.66 SQ.M.



KEY SECTION



KEY PLAN

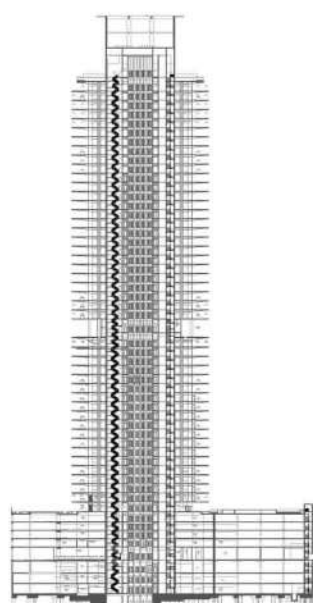


1 BEDROOM TYPE B / UNIT 08

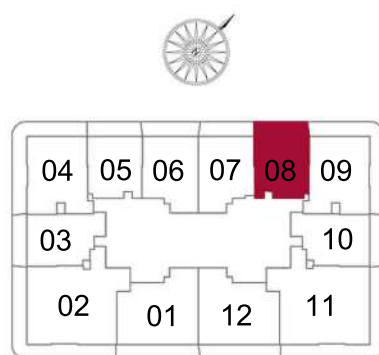
Unit Area = 715.26 SQ.FT. / 66.45 SQ.M.

Balcony Area = 174.59 SQ.FT. / 16.22 SQ.M.

Total Area = 889.85 SQ.FT. / 82.67 SQ.M.



KEY SECTION



KEY PLAN

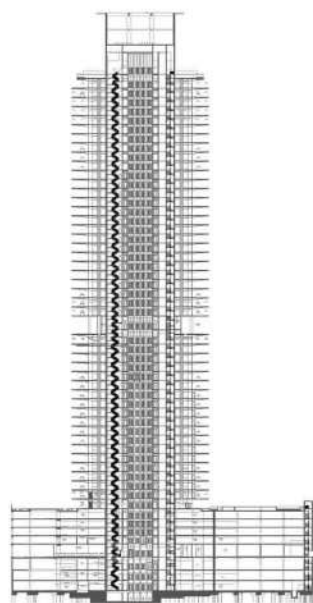


1 BEDROOM TYPE C / UNIT 03

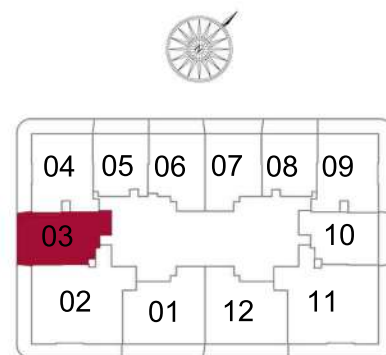
Unit Area = 803.85 SQ.FT. / 74.68 SQ.M.

Balcony Area = 169.21 SQ.FT. / 15.72 SQ.M.

Total Area = 973.06 SQ.FT. / 90.40 SQ.M.



KEY SECTION



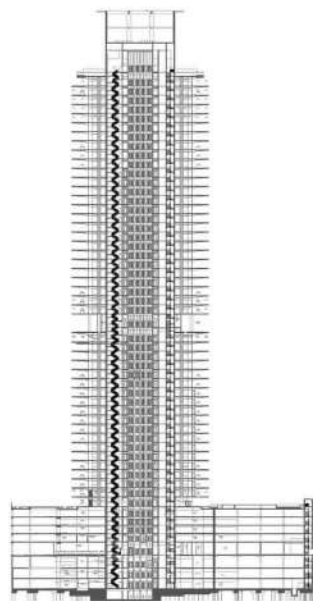
KEY PLAN

1 BEDROOM TYPE C / UNIT10

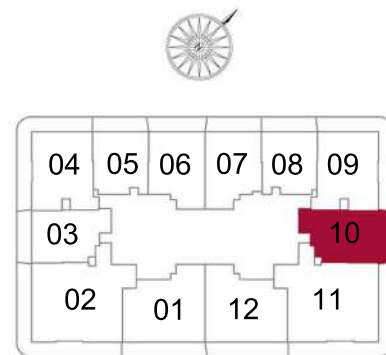
Unit Area = 803.42 SQ.FT. / 74.64 SQ.M.

Balcony Area = 169.32 SQ.FT. / 15.73 SQ.M.

Total Area = 972.73 SQ.FT. / 90.37 SQ.M.



KEY SECTION



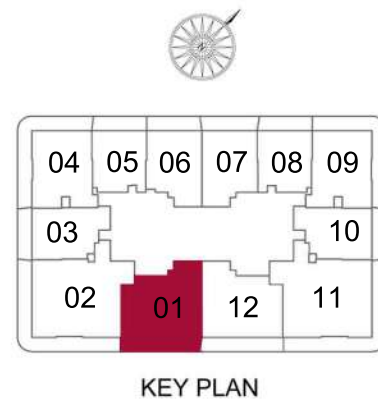
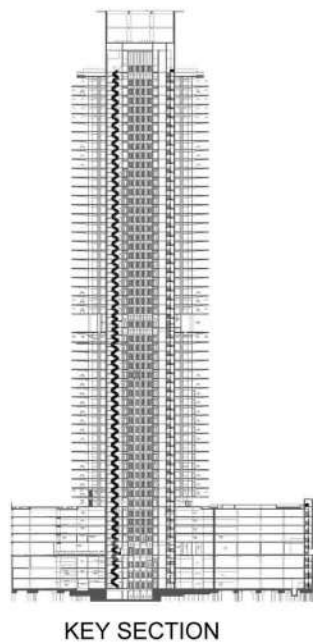
KEY PLAN

2 BEDROOM TYPE A / UNIT 01

Unit Area = 1143.02 SQ.FT. / 106.19 SQ.M.

Balcony Area = 268.99 SQ.FT. / 24.99 SQ.M.

Total Area = 1412.01 SQ.FT. / 131.18 SQ.M.

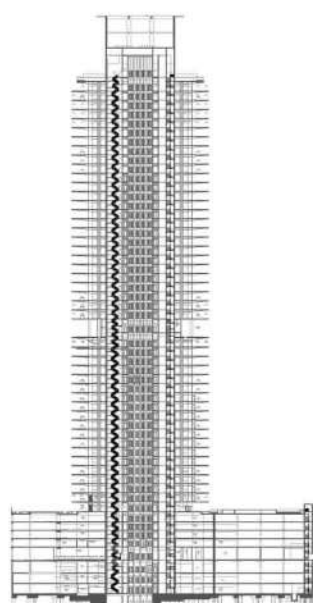


2 BEDROOM TYPE A / UNIT 12

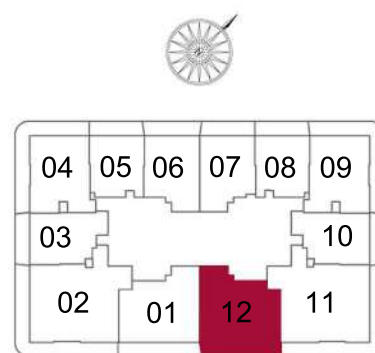
Unit Area = 1143.34 SQ.FT. / 106.22 SQ.M.

Balcony Area = 260.16 SQ.FT. / 24.17 SQ.M.

Total Area = 1403.61 SQ.FT. / 130.40 SQ.M.



KEY SECTION



KEY PLAN

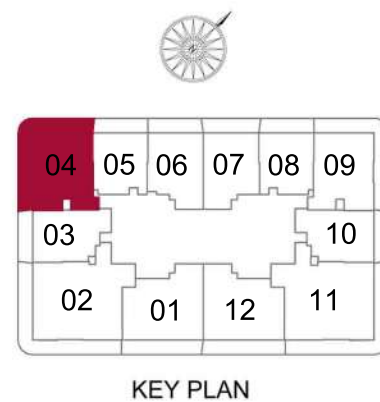
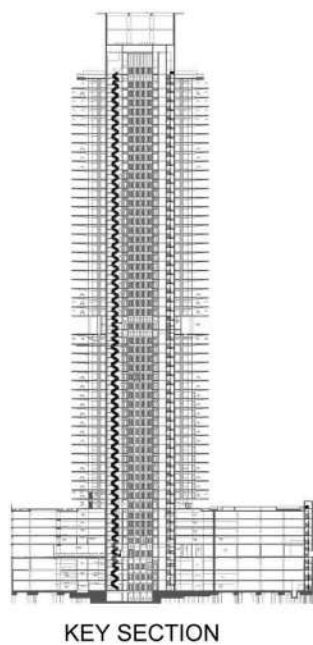


2 BEDROOM TYPE B / UNIT 04

Unit Area = 1016.97 SQ.FT. / 94.48 SQ.M.

Balcony Area = 475.44 SQ.FT. / 44.17 SQ.M.

Total Area = 1492.42 SQ.FT. / 138.65 SQ.M.

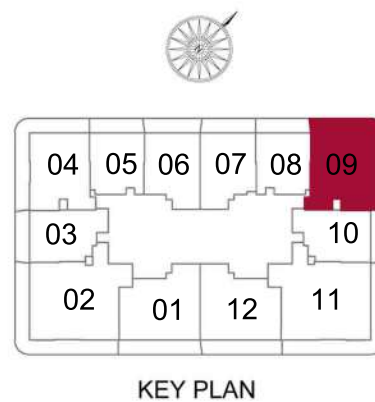
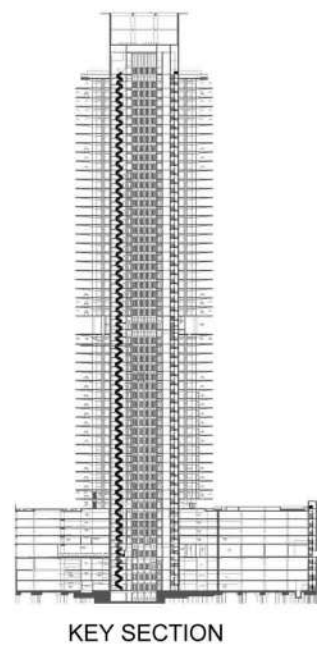


2 BEDROOM TYPE B / UNIT 09

Unit Area = 1016.97 SQ.FT. / 94.48 SQ.M.

Balcony Area = 479.75 SQ.FT. / 44.57 SQ.M.

Total Area = 1496.72 SQ.FT. / 139.05 SQ.M.

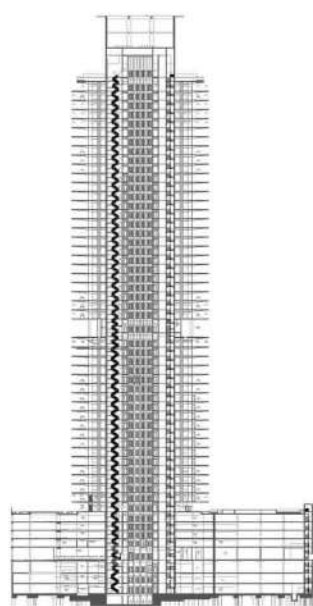


3 BEDROOM / UNIT 02

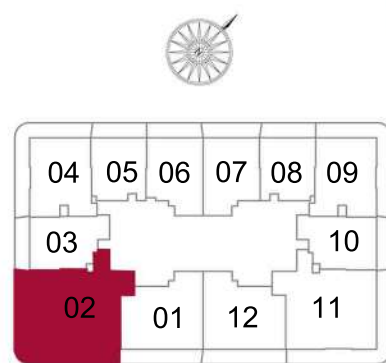
Unit Area = 1627.07 SQ.FT. / 151.16 SQ.M.

Balcony Area = 567.47 SQ.FT. / 52.72 SQ.M.

Total Area = 2194.55 SQ.FT. / 203.88 SQ.M.



KEY SECTION



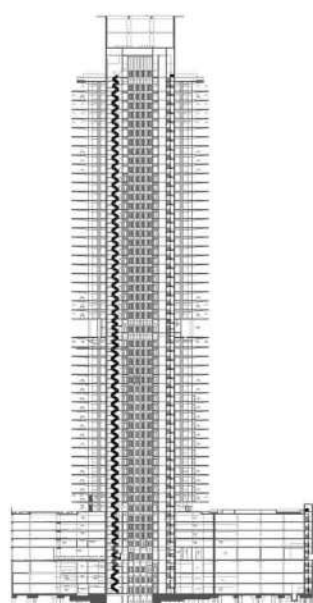
KEY PLAN

3 BEDROOM / UNIT 11

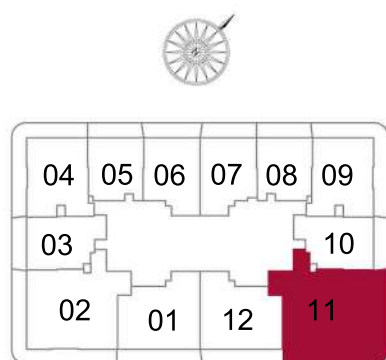
Unit Area = 1627.07 SQ.FT. / 151.16 SQ.M.

Balcony Area = 567.58 SQ.FT. / 52.73 SQ.M.

Total Area = 2194.65 SQ.FT. / 203.89 SQ.M.



KEY SECTION



KEY PLAN

Presented by
EVOLUTIONS

info@evolutions.ae / 800-EVOL (3865)