



RAFFLES  
RESIDENCES & PENTHOUSES  
THE PALM DUBAI

# ROYAL RESIDENTIAL VILLA BY THE SEA

AT  
RAFFLES THE PALM DUBAI

Villa 9



## A HIGHLY COVETED DESTINATION

Nestled within the Western Frond of the iconic Palm Jumeirah and lovingly crafted by European artisans, Raffles Residences & Penthouses The Palm Dubai is a luxury beachfront development featuring spacious & ultra-luxurious up to six-bedroom beautifully appointed residences, penthouses & villas. Since 1887, Raffles has been synonymous with luxury, glamour and extraordinary service for well over a century, a place for connoisseurs to savour life's finest experiences. Guests can immerse themselves in elegantly designed accommodations, dining and entertainment experiences and explore Dubai's most iconic European Palace.

Raffles Residences & Penthouses The Palm Dubai is less than a 5-minute drive from the Nakheel Mall, 30 minutes from Dubai International Airport and 20 minutes to Downtown Dubai with its iconic Dubai Mall & Burj Khalifa.



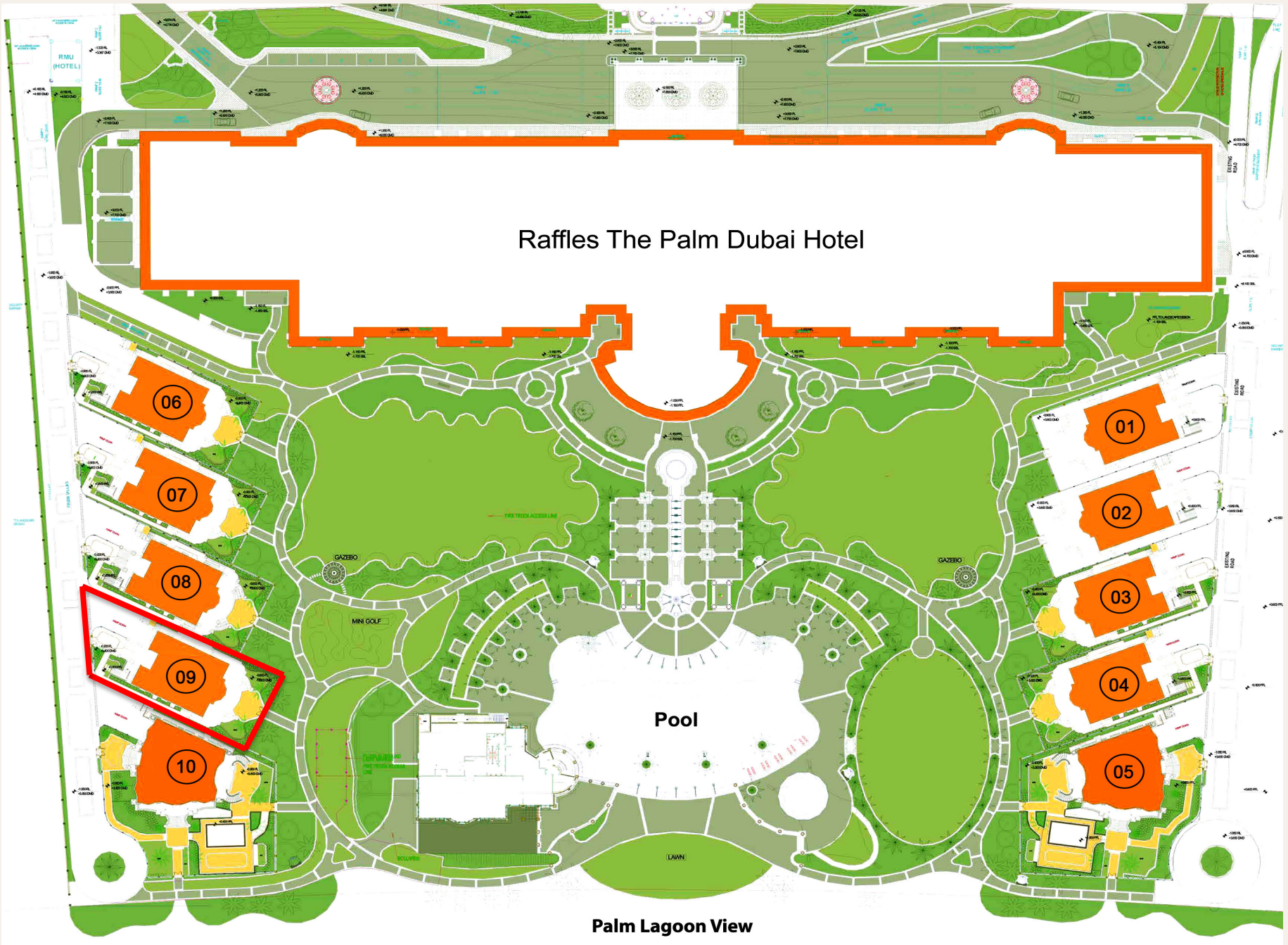
## THE ROYAL VILLA PROFILE



Stately and inspiring, the four-bedroom Royal Villa is a three-story, stand-alone private residence surrounded by the resort's beautifully manicured, palm-studded gardens. Conveniently situated in close proximity to the beach, the elegant manor features a private entrance and elevator, capacious living and dining rooms, a fully-equipped kitchen, a luxurious private spa, multiple terraces and a rooftop pool with whirlpool.

### THE FACTS

<b>SIZE</b>	<b>1.507 SQM (16.223 SQFT)</b>
<b>ARRANGEMENT</b>	<b>4 BEDROOMS + SPACIOUS PRIVATE SPA</b>
<b>CAPACITY</b>	<b>8 ADULTS, 4 CHILDREN, MAID, DRIVER</b>
<b>STOREYS</b>	<b>4 FLOORS</b>
<b>POOL</b>	<b>ROOFTOP POOL WITH WHIRLPOOL</b>
<b>LOCATION</b>	<b>RAFFLES THE PALM DUBAI HOTEL, CRESCENT WEST, PALM JUMEIRAH</b>





































# Villa 09

## BASEMENT FLOOR



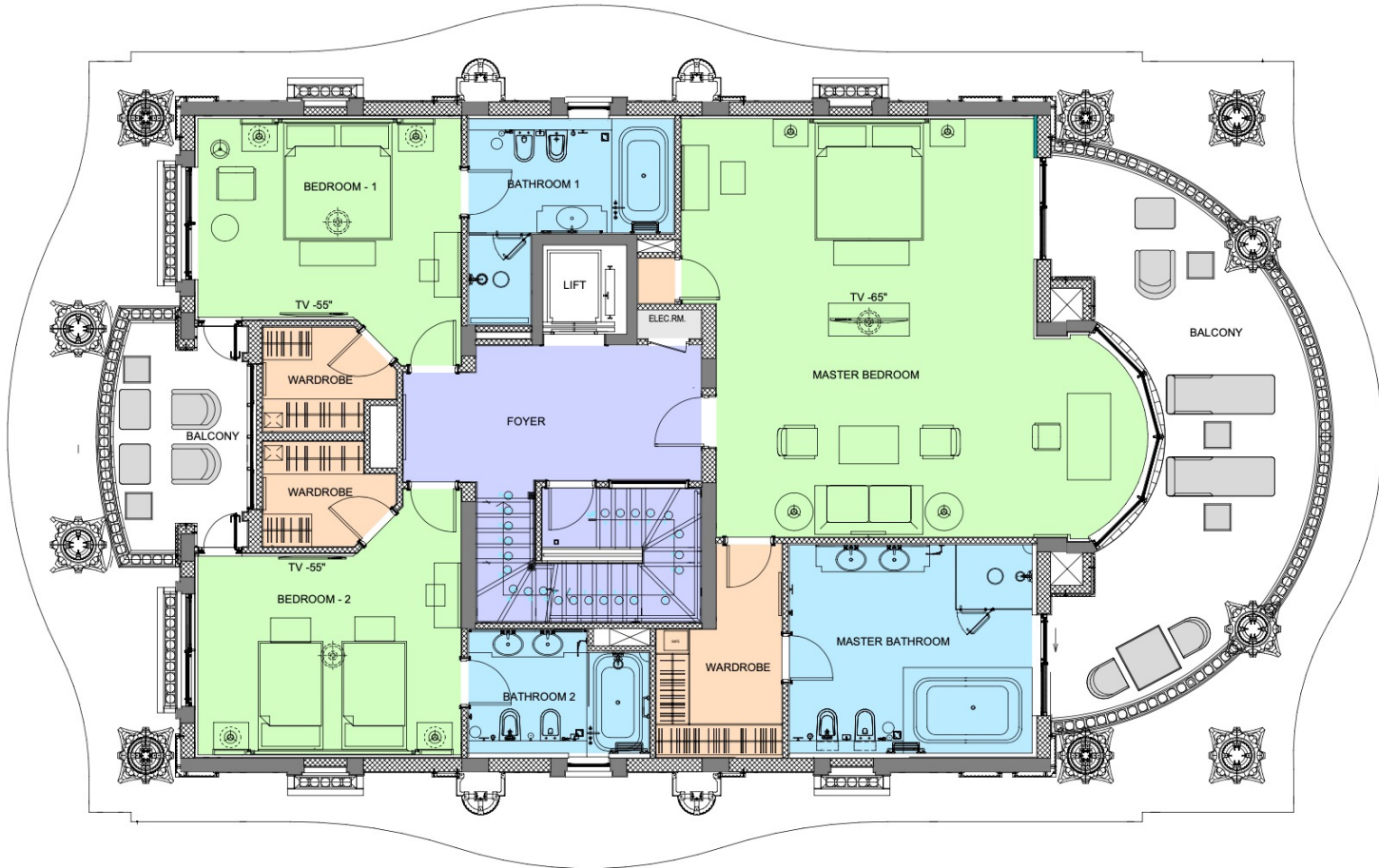
# Villa 09

## GROUND FLOOR



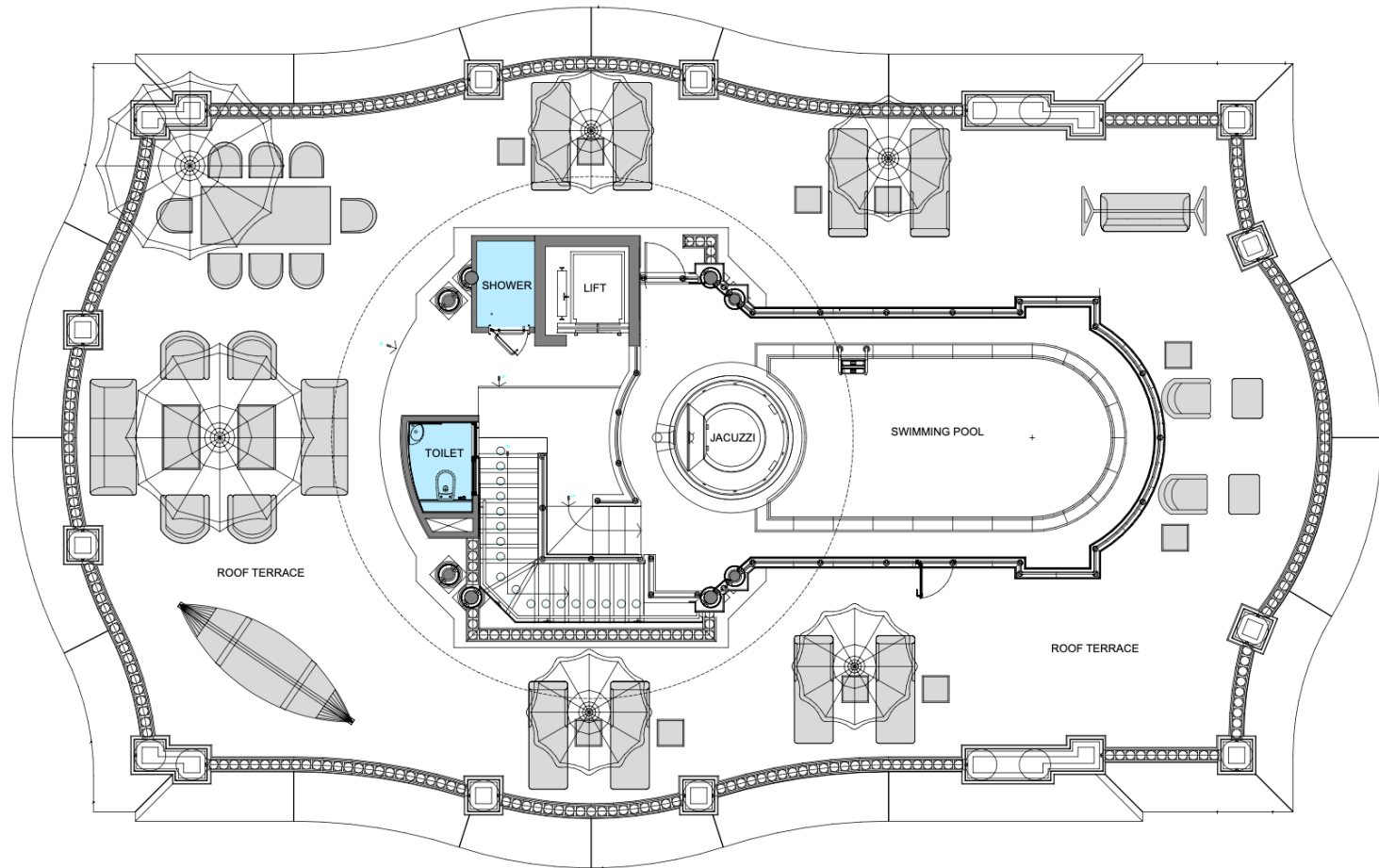
# Villa 09

## FIRST FLOOR



# Villa 09

## LOWER ROOF





## THE HIGHLIGHTS

### LANDSCAPING

- Private garden with lush tropical planting
- Outdoor and landscape lighting
- Royal Palm Trees
- Garage with a parking spot
- 500-metre beach with white sand from the Maldives
- Stunning views from the terraces
- High-class restaurants on the territory
- Secured gateway and territory

### FEATURES

- Fully furnished villa
- Elevator
- 541 to 485.4 million years old marble inside the master bathroom
- Heated rooftop pool with whirlpool
- Private luxury spa
- Fully-equipped kitchen
- Spacious dining and living area
- Walk-in closet
- Three guest bedrooms with individual bathrooms
- Car porch
- Driver and maid's room
- High-speed Wi-Fi
- Smart TV
- Climate control

### BRANDS

- Francesco Molon furniture
- Cinq Mondes branded spa
- Beby Group chandeliers with Swarovski crystals
- Villeroy & Boch crockery
- Loris Zanca curtains
- Ulster carpets
- Sambonet cutlery
- Rosa Portogallo marble from the yearly Cambrian Period (541 to 485.4 million years old)
- Sangiorgio wall fabric
- Villeroy & Boch sanitary

### SPA

- Hammam
- Spa tub
- Massage zone – two massage tables
- Relaxation zone with TV
- Boudoir
- Marble table for Hammam procedures
- Additional private entrance



**RAFFLES**

RESIDENCES & PENTHOUSES  
THE PALM DUBAI



