



RAFFLES
RESIDENCES & PENTHOUSES
THE PALM DUBAI

ROYAL RESIDENTIAL VILLA BY THE SEA

AT
RAFFLES THE PALM DUBAI

Villa 8

A HIGHLY COVETED DESTINATION

Nestled within the Western Frond of the iconic Palm Jumeirah and lovingly crafted by European artisans, Raffles Residences & Penthouses The Palm Dubai is a luxury beachfront development featuring spacious & ultra-luxurious up to six-bedroom beautifully appointed residences, penthouses & villas. Since 1887, Raffles has been synonymous with luxury, glamour and extraordinary service for well over a century, a place for connoisseurs to savour life's finest experiences. Guests can immerse themselves in elegantly designed accommodations, dining and entertainment experiences and explore Dubai's most iconic European Palace.

Raffles Residences & Penthouses The Palm Dubai is less than a 5-minute drive from the Nakheel Mall, 30 minutes from Dubai International Airport and 20 minutes to Downtown Dubai with its iconic Dubai Mall & Burj Khalifa.



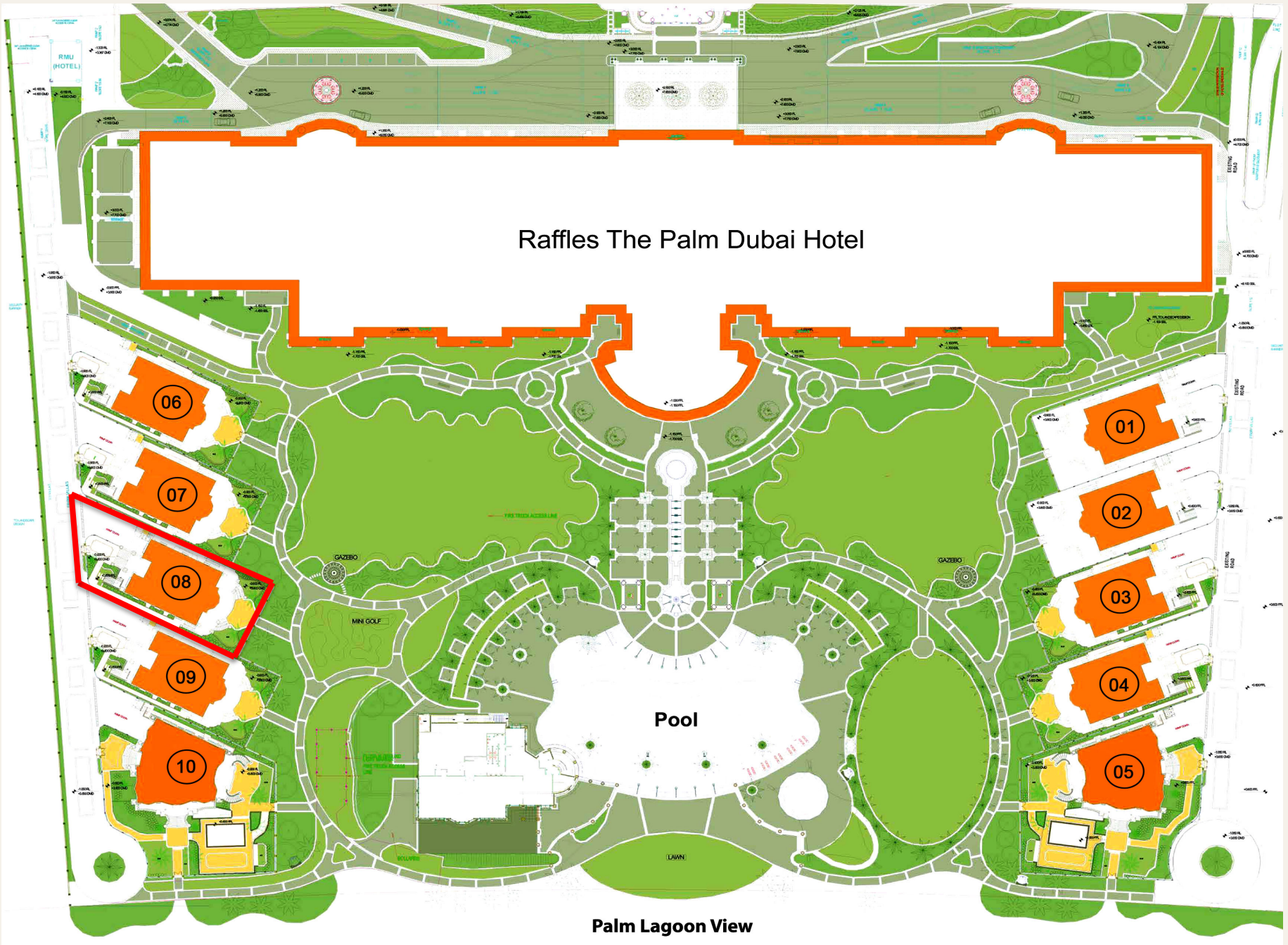
THE ROYAL VILLA PROFILE



Stately and inspiring, the four-bedroom Royal Villa is a three-story, stand-alone private residence surrounded by the resort's beautifully manicured, palm-studded gardens. Conveniently situated in close proximity to the beach, the elegant manor features a private entrance and elevator, capacious living and dining rooms, a fully-equipped kitchen, a luxurious private spa, multiple terraces and a rooftop pool with whirlpool.

THE FACTS

SIZE	1.506 SQM (16.211 SQFT)
ARRANGEMENT	4 BEDROOMS + SPACIOUS PRIVATE SPA
CAPACITY	8 ADULTS, 4 CHILDREN, MAID, DRIVER
STOREYS	4 FLOORS
POOL	ROOFTOP POOL WITH WHIRLPOOL
LOCATION	RAFFLES THE PALM DUBAI HOTEL, CRESCENT WEST, PALM JUMEIRAH



Raffles The Palm Dubai Hotel

Pool

Palm Lagoon View































Villa 08

BASEMENT FLOOR



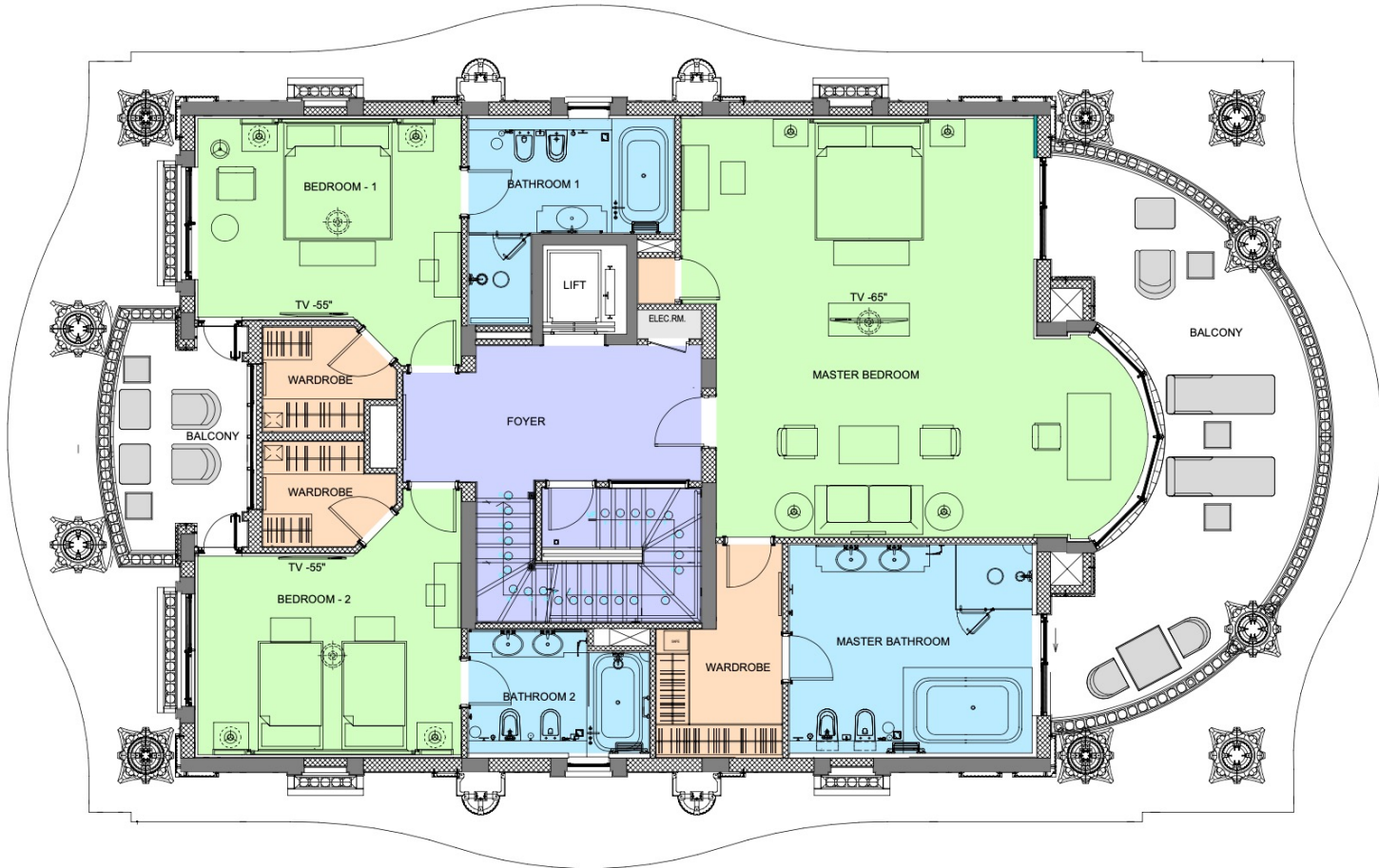
Villa 08

GROUND FLOOR



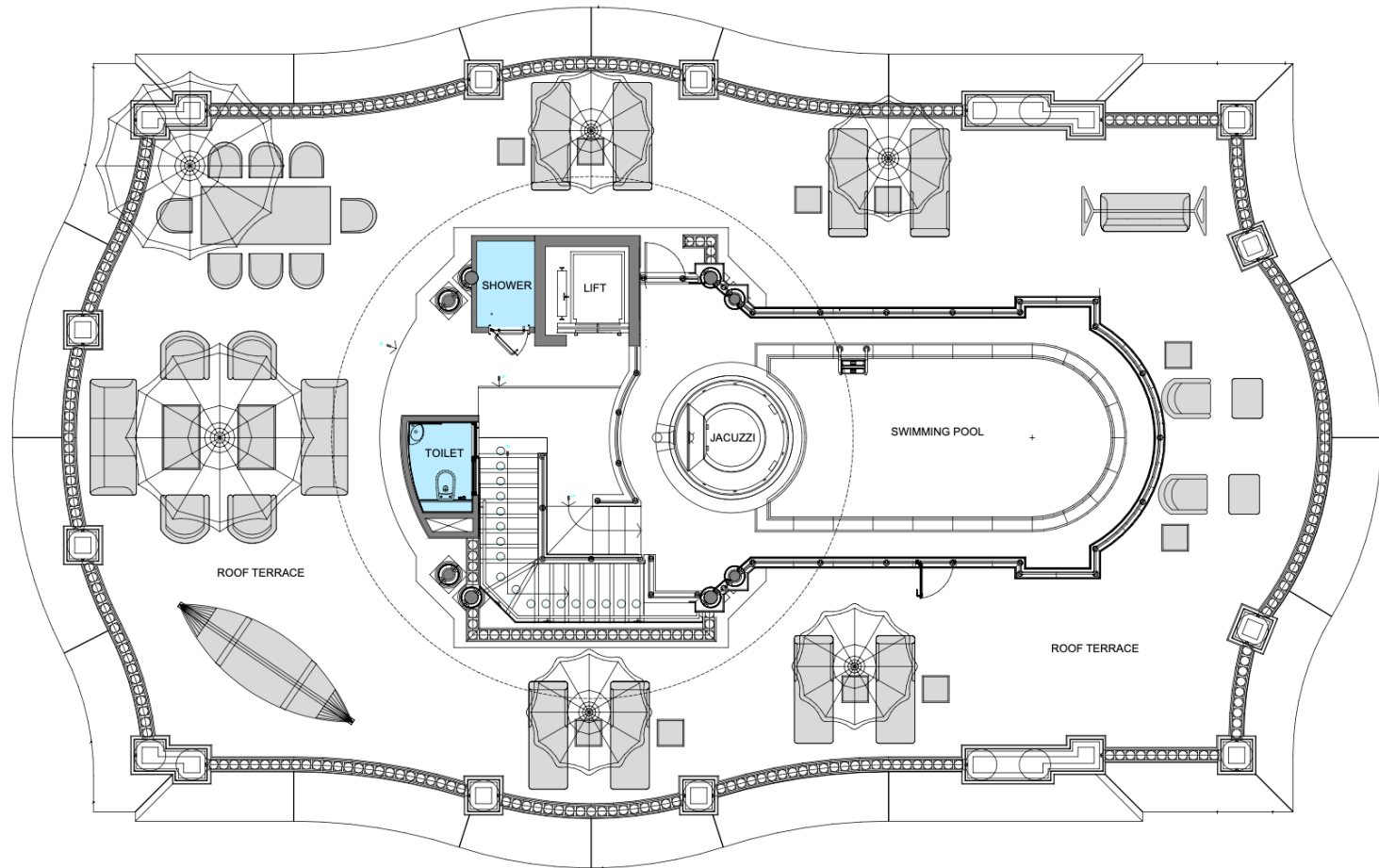
Villa 08

FIRST FLOOR



Villa 08

LOWER ROOF



THE HIGHLIGHTS

LANDSCAPING

- Private garden with lush tropical planting
- Outdoor and landscape lighting
- Royal Palm Trees
- Garage with a parking spot
- 500-metre beach with white sand from the Maldives
- Stunning views from the terraces
- High-class restaurants on the territory
- Secured gateway and territory

FEATURES

- Fully furnished villa
- Elevator
- 541 to 485.4 million years old marble inside the master bathroom
- Heated rooftop pool with whirlpool
- Private luxury spa
- Fully-equipped kitchen
- Spacious dining and living area
- Walk-in closet
- Three guest bedrooms with individual bathrooms
- Car porch
- Driver and maid's room
- High-speed Wi-Fi
- Smart TV
- Climate control

BRANDS

- Francesco Molon furniture
- Cinq Mondes branded spa
- Beby Group chandeliers with Swarovski crystals
- Villeroy & Boch crockery
- Loris Zanca curtains
- Ulster carpets
- Sambonet cutlery
- Rosa Portogallo marble from the yearly Cambrian Period (541 to 485.4 million years old)
- Sangiorgio wall fabric
- Villeroy & Boch sanitary

SPA

- Hammam
- Spa tub
- Massage zone – two massage tables
- Relaxation zone with TV
- Boudoir
- Marble table for Hammam procedures
- Additional private entrance



RAFFLES

RESIDENCES & PENTHOUSES
THE PALM DUBAI

