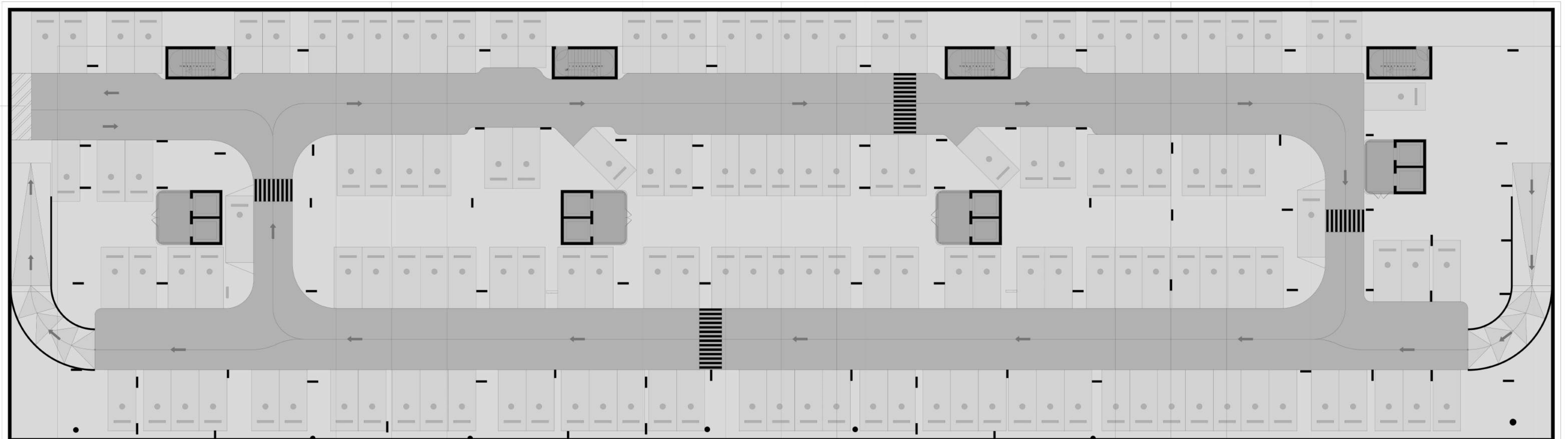


# GATE

ELEVEN

## *Basement Floor Plan*

▲  
Al Ain Road



◀  
Burj  
Khalifa

▼  
The Lagoon &  
The Community Park

▶  
Community  
Park

Disclaimer: This document is intended for estimation purposes only. The information contained herein is subject to change and may be modified during the course of construction. The developer reserves the right to make adjustments as necessary without prior notice. Any discrepancies or variations that arise during the construction process will be addressed and resolved in accordance with the project's requirements and best practices.

AMWAJ  
DEVELOPMENT

# GATE

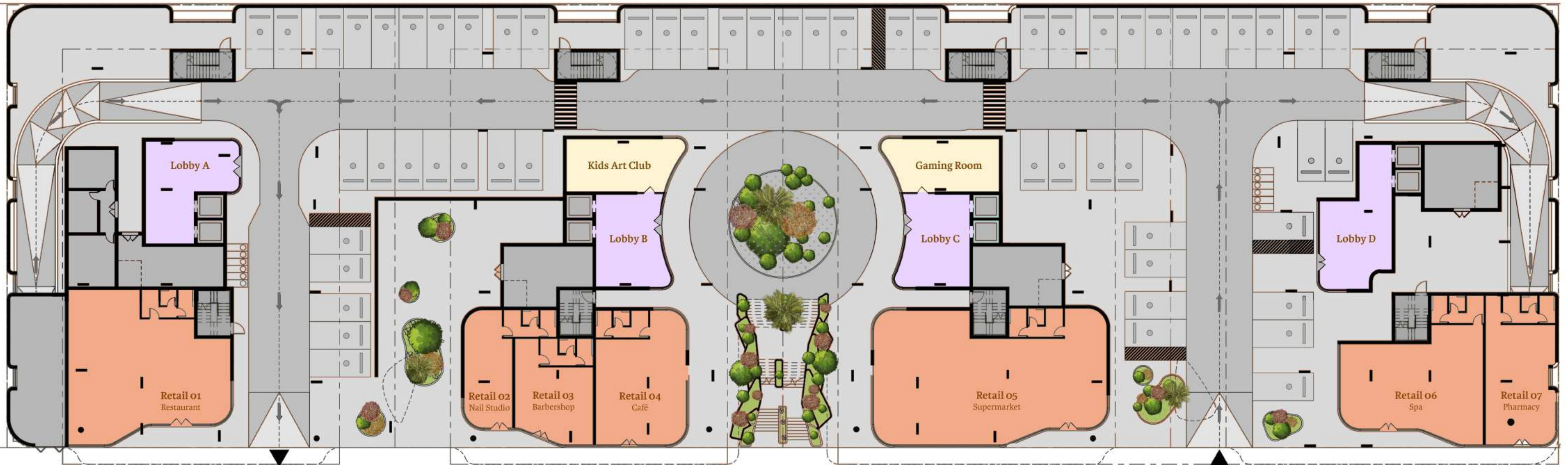
ELEVEN

## Ground Floor Plan

▲  
Al Ain Road

- Legend*
- RETAIL
  - AMENITIES
  - LOBBIES

▲ NORTH



◀ Burj Khalifa

The Lagoon &  
The Community Park

▶ Community Park

Disclaimer: This document is intended for estimation purposes only. The information contained herein is subject to change and may be modified during the course of construction. The developer reserves the right to make adjustments as necessary without prior notice. Any discrepancies or variations that arise during the construction process will be addressed and resolved in accordance with the project's requirements and best practices.

AMWAJ  
DEVELOPMENT

# GATE

ELEVEN

## First Floor Plan

Al Ain Road

### Legend

- 1BHK
- 1BHK PLUS
- 2BHK
- 2BHK PLUS
- BALCONIES

NORTH



Burj Khalifa

The Lagoon &  
The Community Park

Community  
Park

Disclaimer: This document is intended for estimation purposes only. The information contained herein is subject to change and may be modified during the course of construction. The developer reserves the right to make adjustments as necessary without prior notice. Any discrepancies or variations that arise during the construction process will be addressed and resolved in accordance with the project's requirements and best practices.

AMWAJ  
DEVELOPMENT

# GATE

ELEVEN

## Second Floor Plan

▲  
Al Ain Road

### Legend

- 1BHK
- 1BHK PLUS
- 2BHK
- 2BHK PLUS
- BALCONIES

▲ NORTH



◀ Burj Khalifa

The Lagoon &  
The Community Park

Community Park ▶

Disclaimer: This document is intended for estimation purposes only. The information contained herein is subject to change and may be modified during the course of construction. The developer reserves the right to make adjustments as necessary without prior notice. Any discrepancies or variations that arise during the construction process will be addressed and resolved in accordance with the project's requirements and best practices.

AMWAJ  
DEVELOPMENT

# GATE

ELEVEN

## Third Floor Plan

▲  
Al Ain Road

### Legend

- 1BHK
- 1BHK PLUS
- 2BHK
- 2BHK PLUS
- BALCONIES

▲ NORTH



◀ Burj Khalifa

The Lagoon &  
The Community Park

▼

Community Park ▶

Disclaimer: This document is intended for estimation purposes only. The information contained herein is subject to change and may be modified during the course of construction. The developer reserves the right to make adjustments as necessary without prior notice. Any discrepancies or variations that arise during the construction process will be addressed and resolved in accordance with the project's requirements and best practices.

AMWAJ  
DEVELOPMENT

# GATE

ELEVEN

## Fourth Floor Plan

▲  
Al Ain Road

### Legend

- 1BHK
- 1BHK PLUS
- 2BHK
- 2BHK PLUS
- BALCONIES

▲ NORTH



▲ Burj Khalifa

The Lagoon &  
The Community Park

Community Park  
▶

Disclaimer: This document is intended for estimation purposes only. The information contained herein is subject to change and may be modified during the course of construction. The developer reserves the right to make adjustments as necessary without prior notice. Any discrepancies or variations that arise during the construction process will be addressed and resolved in accordance with the project's requirements and best practices.

AMWAJ  
DEVELOPMENT

# GATE

ELEVEN

## Fifth Floor Plan

▲  
Al Ain Road

### Legend

- 1BHK
- 1BHK PLUS
- 2BHK
- 2BHK PLUS
- BALCONIES

▲ NORTH



◀ Burj Khalifa

The Lagoon &  
The Community Park

Community Park ▶

Disclaimer: This document is intended for estimation purposes only. The information contained herein is subject to change and may be modified during the course of construction. The developer reserves the right to make adjustments as necessary without prior notice. Any discrepancies or variations that arise during the construction process will be addressed and resolved in accordance with the project's requirements and best practices.

AMWAJ  
DEVELOPMENT

# GATE

ELEVEN

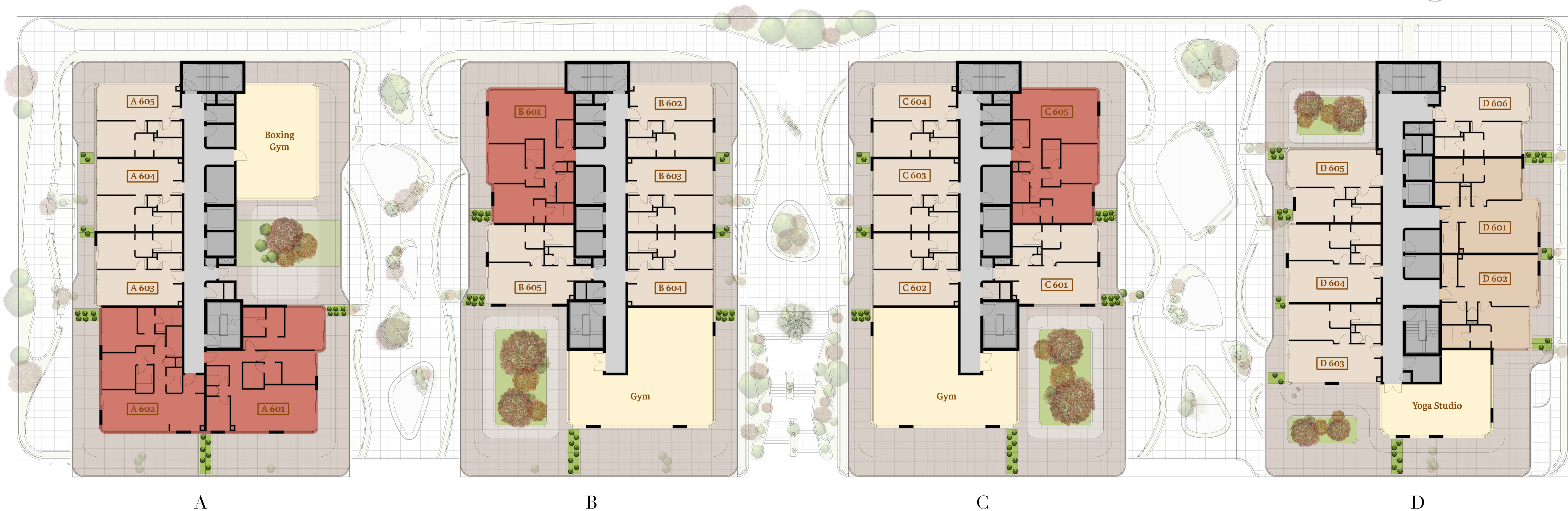
## Roof Floor Plan

▲  
Al Ain Road

### Legend

- 1BHK
- 1BHK PLUS
- 2BHK
- 2BHK PLUS
- BALCONIES
- LOBBIES
- AMENITIES

▲ NORTH



▼  
The Lagoon &  
The Community Park

Disclaimer: This document is intended for estimation purposes only. The information contained herein is subject to change and may be modified during the course of construction. The developer reserves the right to make adjustments as necessary without prior notice. Any discrepancies or variations that arise during the construction process will be addressed and resolved in accordance with the project's requirements and best practices.

AMWAJ  
DEVELOPMENT

# GATE

ELEVEN

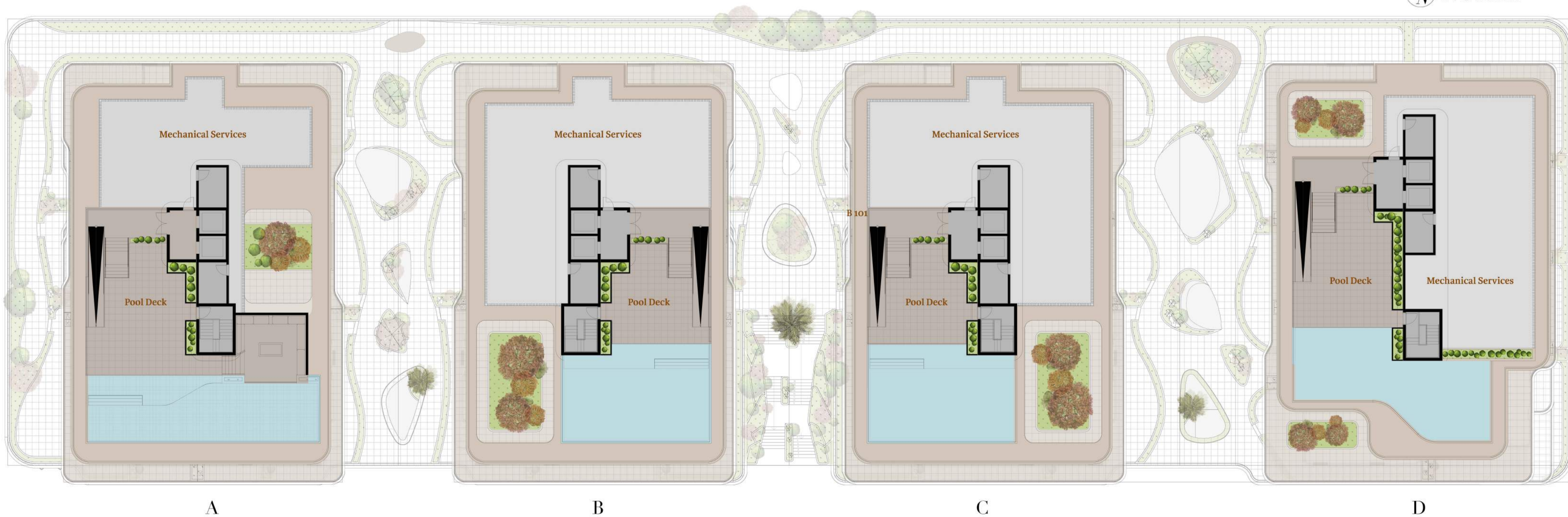
## Upper Roof Floor Plan

▲  
Al Ain Road

### Legend

- 1BHK
- 1BHK PLUS
- 2BHK
- 2BHK PLUS
- BALCONIES

▲ NORTH



▼  
The Lagoon &  
The Community Park

◀  
Burj  
Khalifa

▶  
Community  
Park

Disclaimer: This document is intended for estimation purposes only. The information contained herein is subject to change and may be modified during the course of construction. The developer reserves the right to make adjustments as necessary without prior notice. Any discrepancies or variations that arise during the construction process will be addressed and resolved in accordance with the project's requirements and best practices.

AMWAJ  
DEVELOPMENT

# GATE

ELEVEN

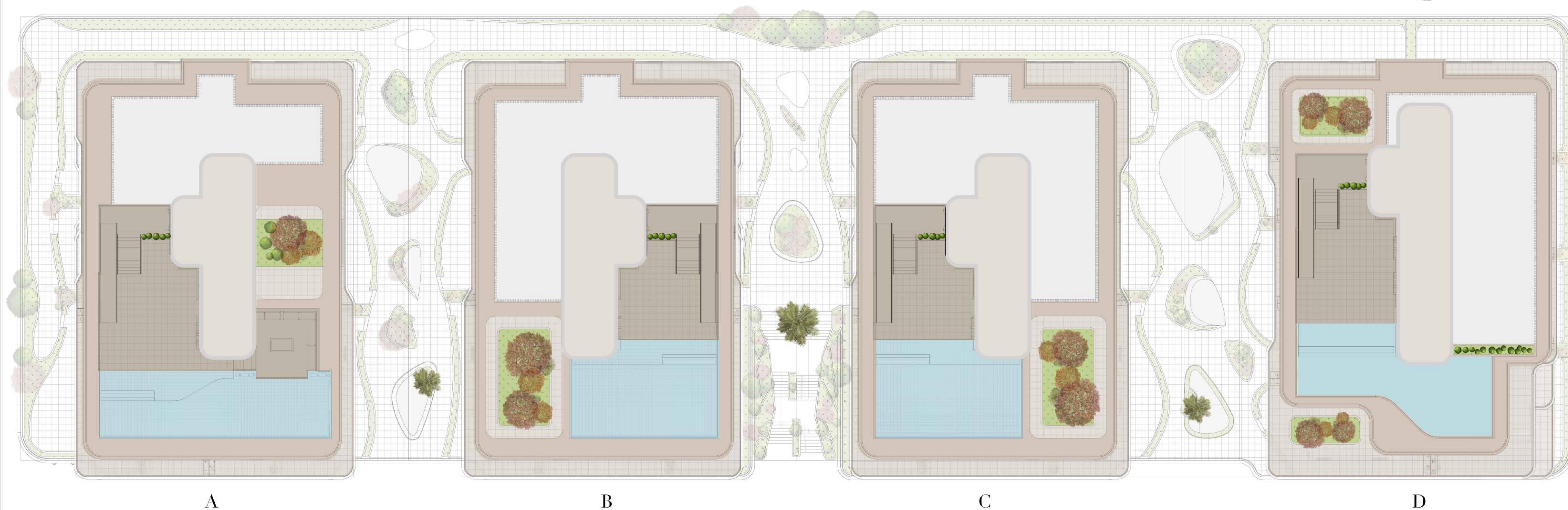
## Top Of Roof Floor Plan

▲  
Al Ain Road

### Legend

- 1BHK
- 1BHK PLUS
- 2BHK
- 2BHK PLUS
- BALCONIES

▲ NORTH



▼  
The Lagoon &  
The Community Park

►  
Community  
Park

◄  
Burj  
Khalifa

Disclaimer: This document is intended for estimation purposes only. The information contained herein is subject to change and may be modified during the course of construction. The developer reserves the right to make adjustments as necessary without prior notice. Any discrepancies or variations that arise during the construction process will be addressed and resolved in accordance with the project's requirements and best practices.

AMWAJ  
DEVELOPMENT