

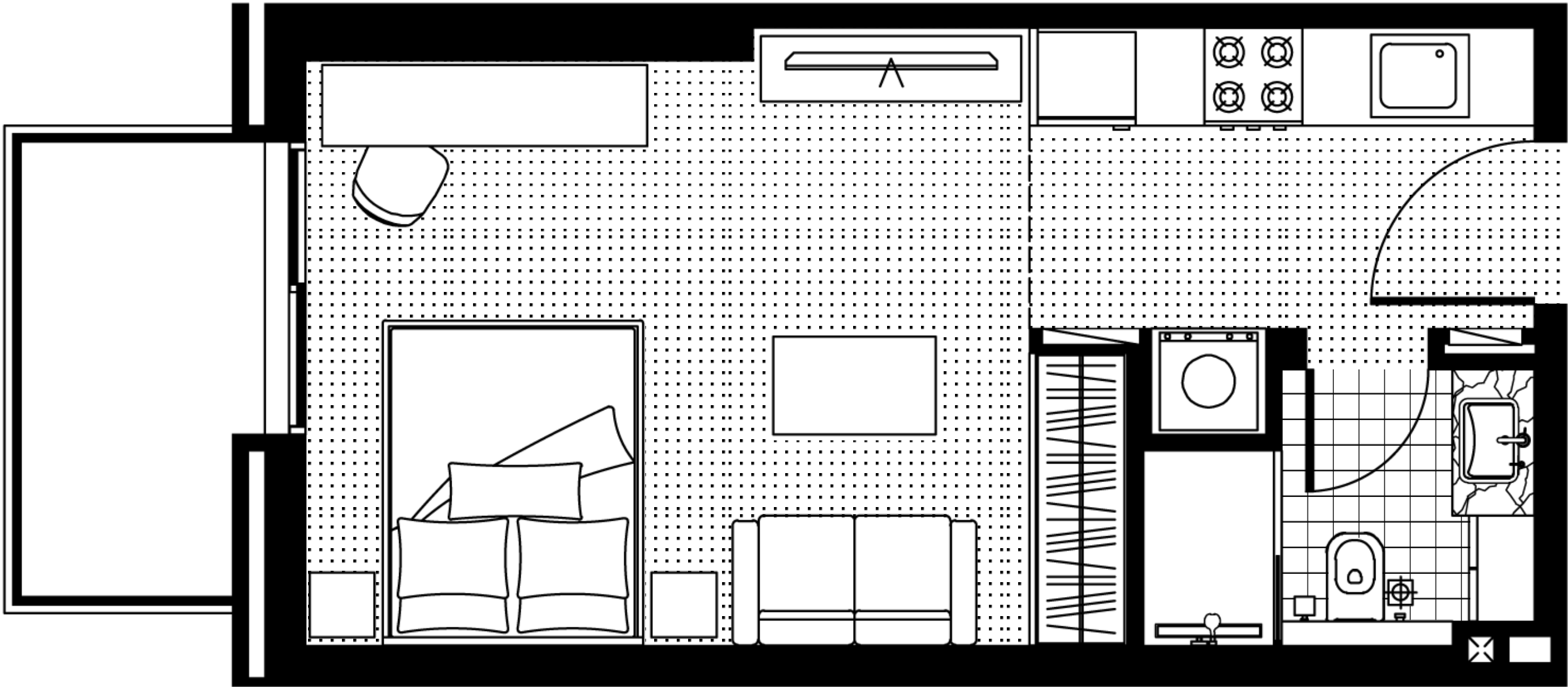
FLOOR PLANS APARTMENTS

BY
FORUM



FH Residency

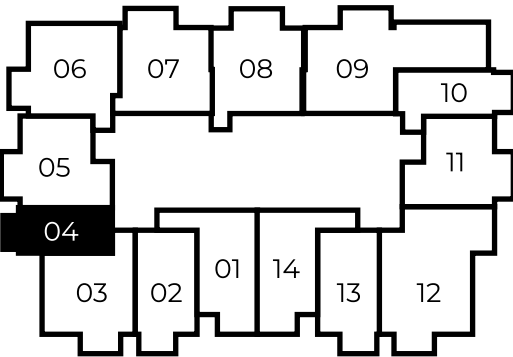
STUDIO TYPE A



indoor	336 SQ FT	31,2 SQ MT
balcony	52 SQ FT	4,8 SQ MT
<hr/>		
total	388 SQ FT	36 SQ MT

Floor 2-11

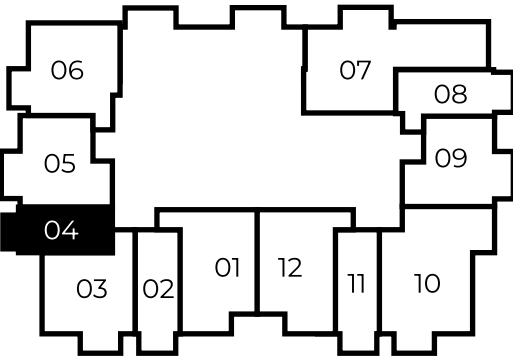
Dubai Marina view



Jumeirah golf estates view

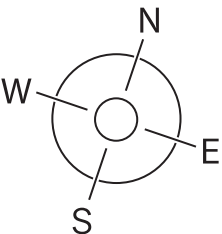
Floor 12

Dubai Marina view



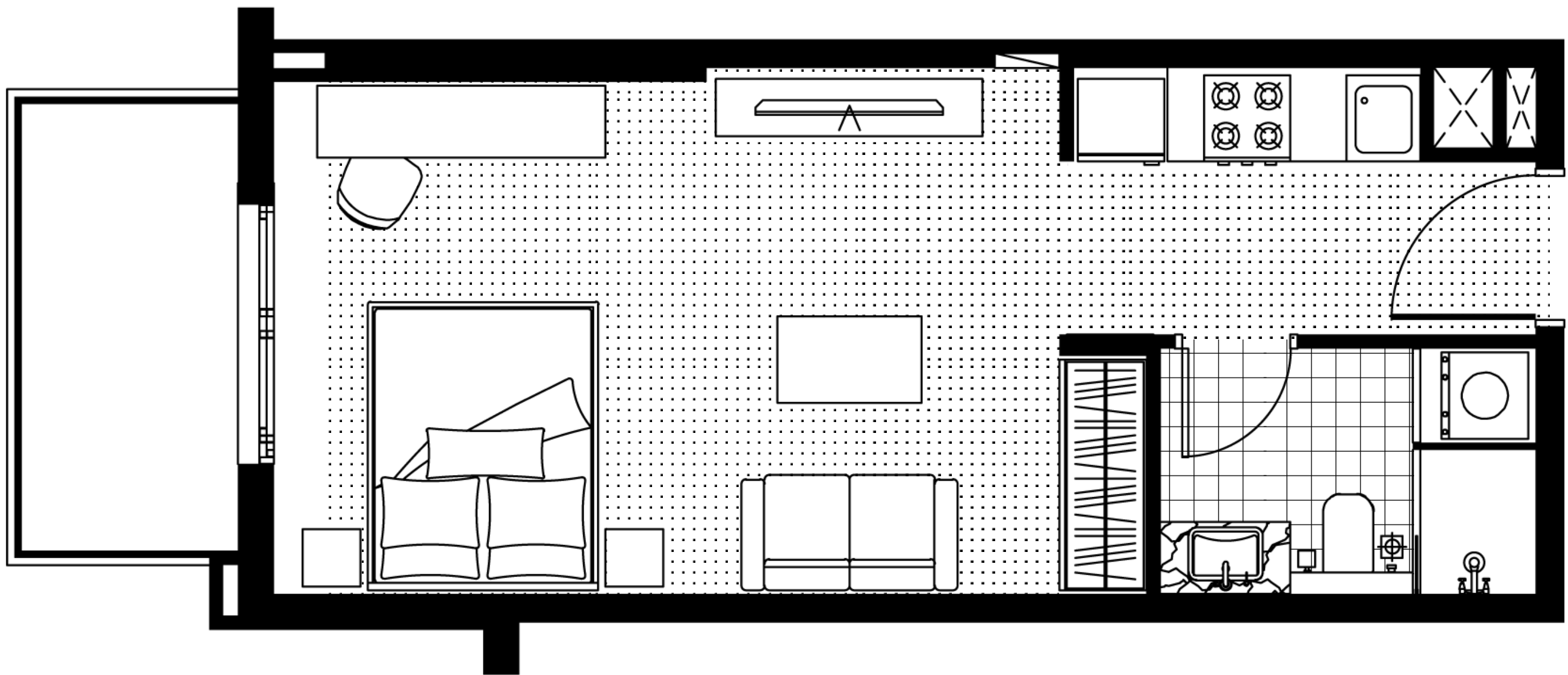
Jumeirah golf estates view

All drawings and dimensions are approximate. Drawings not to scale and are subject to change without notice. The developer reserves the right to make revisions. The units are measured at typical floor in the building and columns may vary in size depending on the floor level. The Furnishings and accessories shown are for representation only. The length and width of the Unit and balcony varies depending on which floor and which orientation the unit is located within the building to comply with the building authority regulations



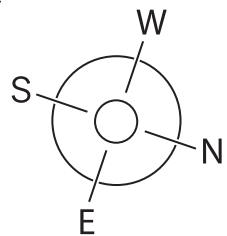
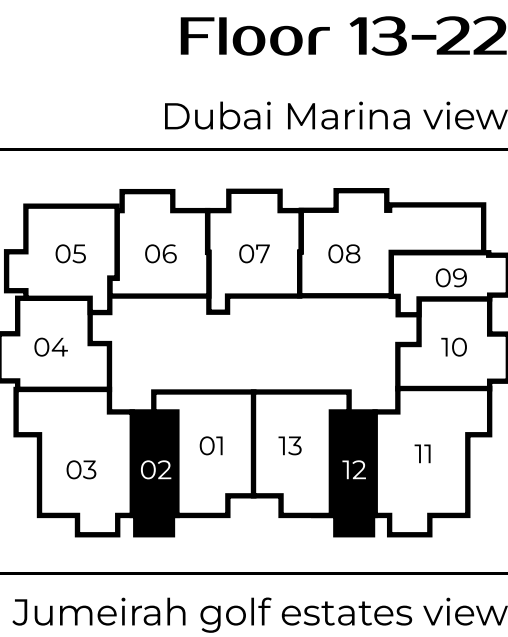
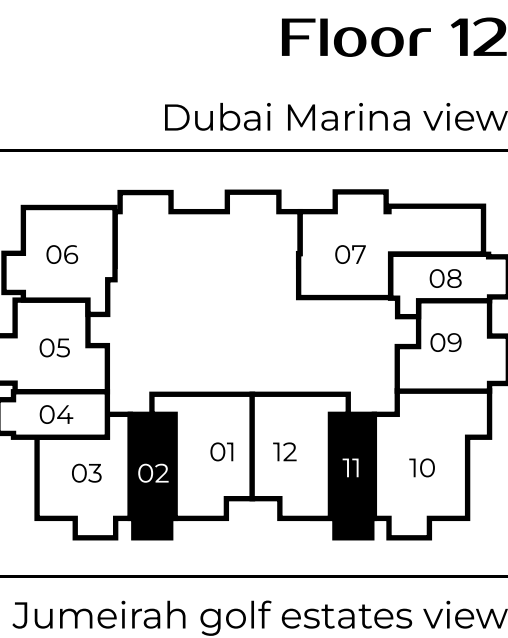
FH Residency

STUDIO TYPE B



indoor	371 SQ FT	34,5 SQ MT
balcony	56 SQ FT	5,2 SQ MT
<hr/>		
total	427 SQ FT	39,7 SQ MT

All drawings and dimensions are approximate. Drawings not to scale and are subject to change without notice. The developer reserves the right to make revisions. The units are measured at typical floor in the building and columns may vary in size depending on the floor level. The Furnishings and accessories shown are for representation only. The length and width of the Unit and balcony varies depending on which floor and which orientation the unit is located within the building to comply with the building authority regulations



FH Residency

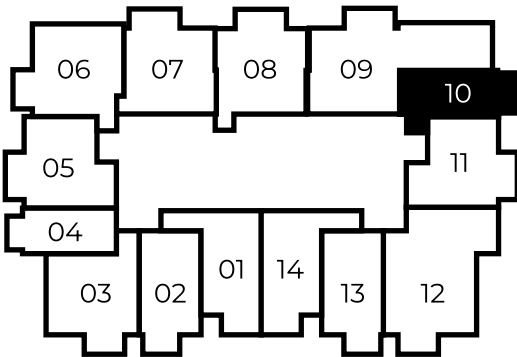
STUDIO TYPE C



indoor	373 SQ FT	34,7 SQ MT
balcony	60 SQ FT	5,6 SQ MT
<hr/>		
total	433 SQ FT	40,3 SQ MT

Floor 2-11

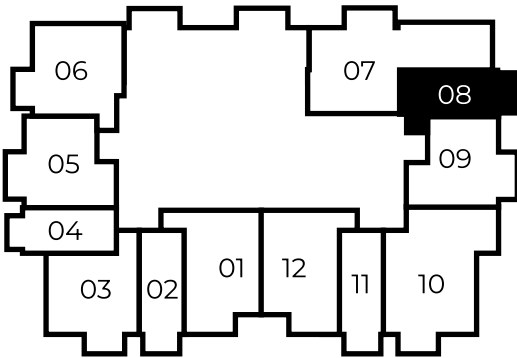
Dubai Marina view



Jumeirah golf estates view

Floor 12

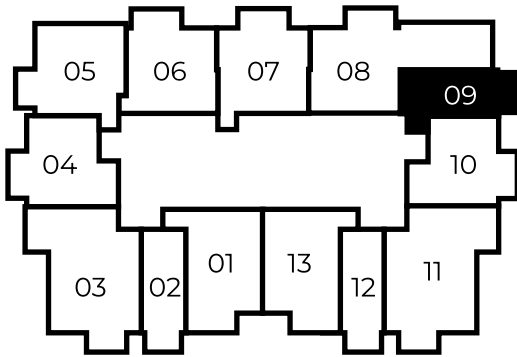
Dubai Marina view



Jumeirah golf estates view

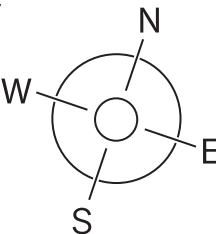
Floor 13-22

Dubai Marina view

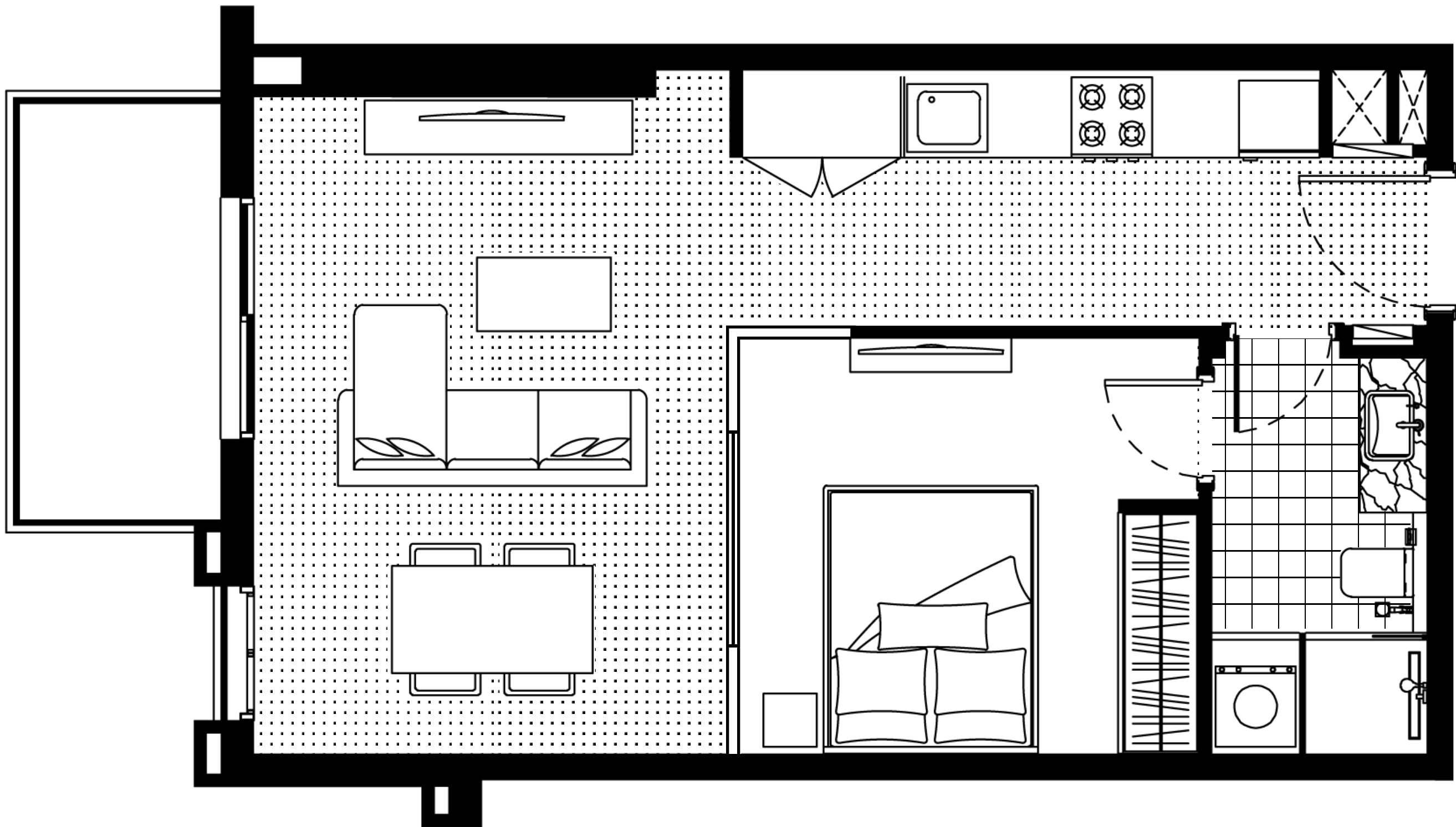


Jumeirah golf estates view

All drawings and dimensions are approximate. Drawings not to scale and are subject to change without notice. The developer reserves the right to make revisions. The units are measured at typical floor in the building and columns may vary in size depending on the floor level. The Furnishings and accessories shown are for representation only. The length and width of the Unit and balcony varies depending on which floor and which orientation the unit is located within the building to comply with the building authority regulations



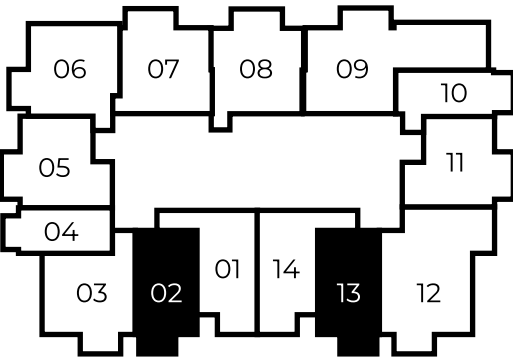
ONE BEDROOM SMART TYPE A



indoor	511 SQ FT	47,5 SQ MT
balcony	57 SQ FT	5,3 SQ MT
<hr/>		
total	568 SQ FT	52,8 SQ MT

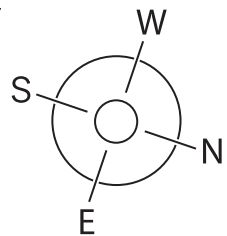
Floor 2-11

Dubai Marina view



Jumeirah golf estates view

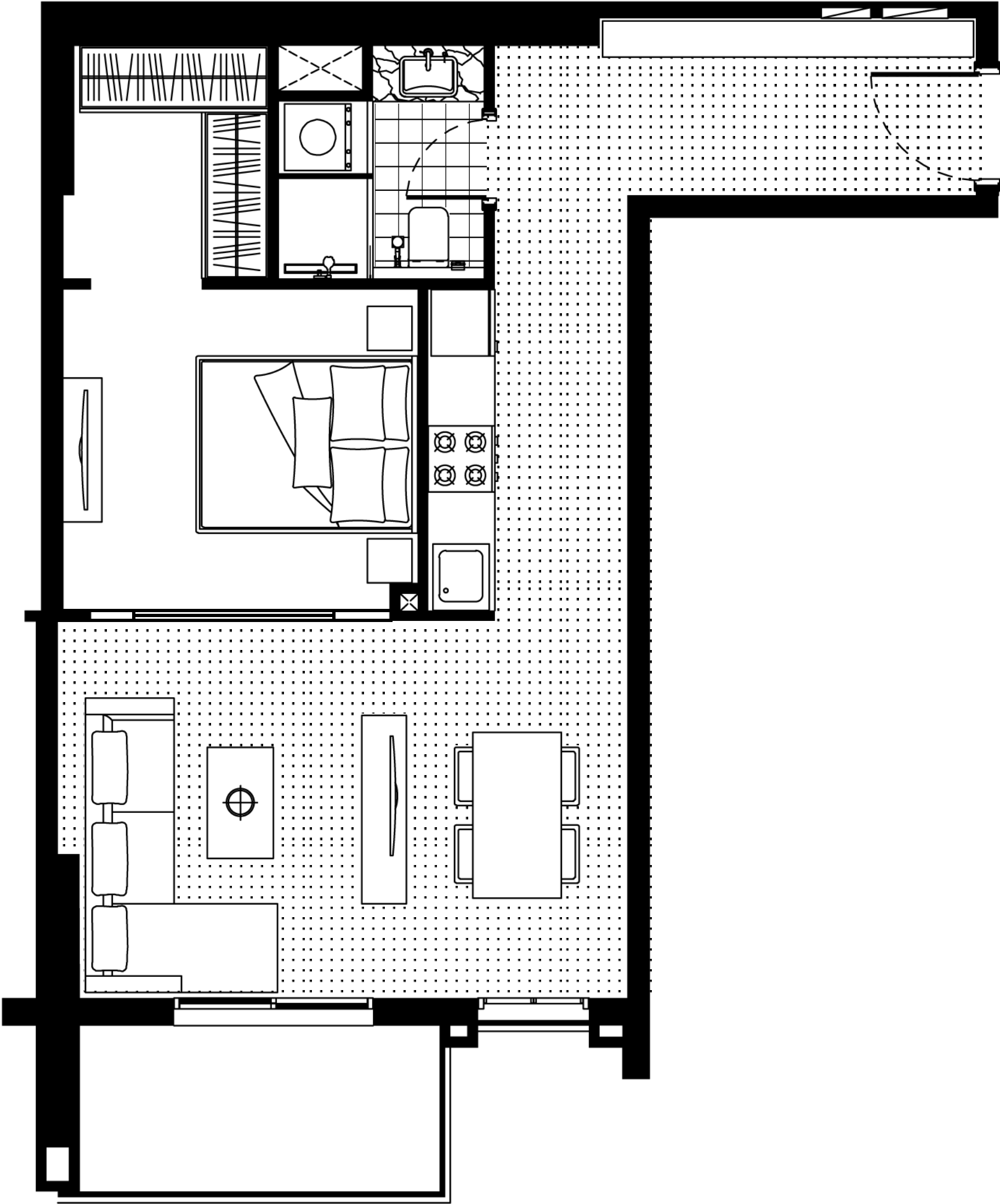
All drawings and dimensions are approximate. Drawings not to scale and are subject to change without notice. The developer reserves the right to make revisions. The units are measured at typical floor in the building and columns may vary in size depending on the floor level. The Furnishings and accessories shown are for representation only. The length and width of the Unit and balcony varies depending on which floor and which orientation the unit is located within the building to comply with the building authority regulations



FH Residency

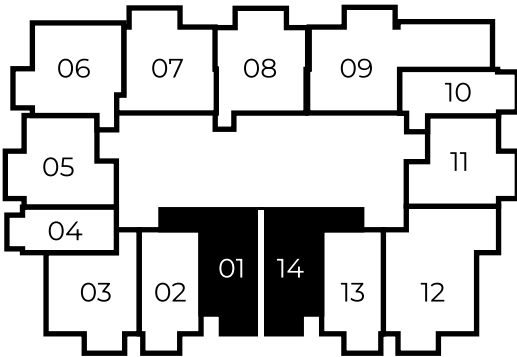
ONE BEDROOM SMART TYPE B

indoor	567 SQ FT	52,7 SQ MT
balcony	60 SQ FT	5,6 SQ MT
<hr/>		
total	627 SQ FT	58,3 SQ MT



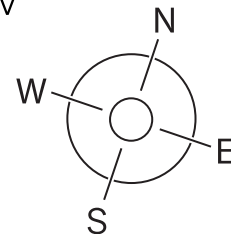
Floor 2-11

Dubai Marina view



Jumeirah golf estates view

All drawings and dimensions are approximate. Drawings not to scale and are subject to change without notice. The developer reserves the right to make revisions. The units are measured at typical floor in the building and columns may vary in size depending on the floor level. The Furnishings and accessories shown are for representation only. The length and width of the Unit and balcony varies depending on which floor and which orientation the unit is located within the building to comply with the building authority regulations

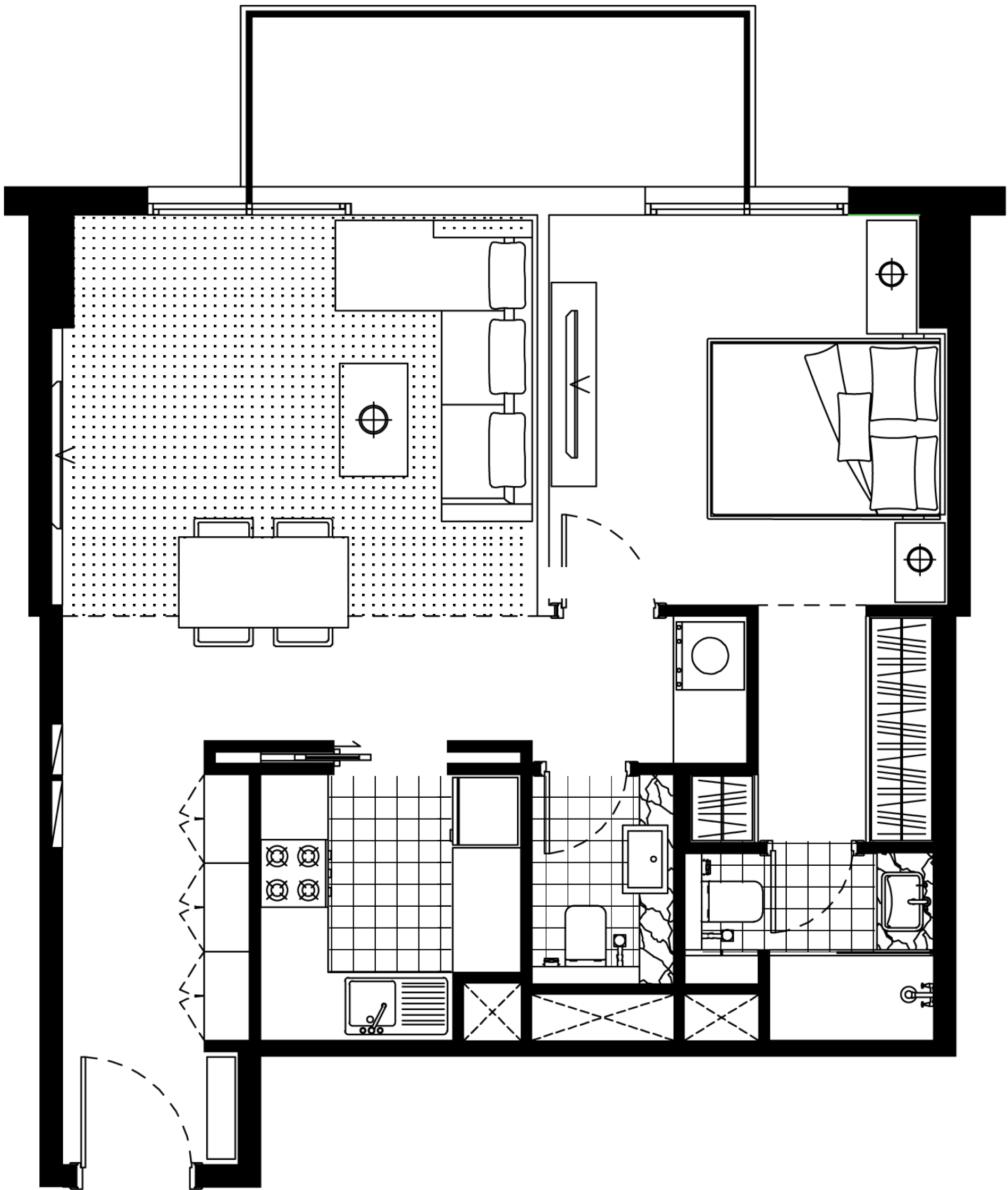


FH Residency

ONE BEDROOM

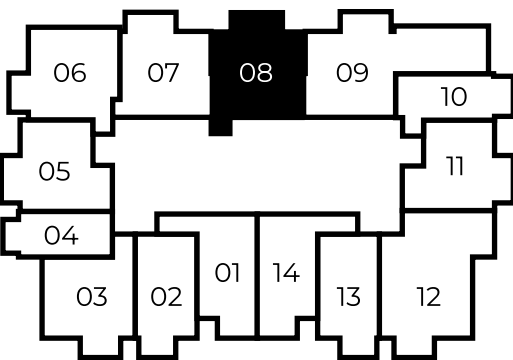
TYPE A

indoor	662 SQ FT	61,5 SQ MT
balcony	77 SQ FT	7,2 SQ MT
<hr/>		
total	739 SQ FT	68,7 SQ MT



Floor 2-11

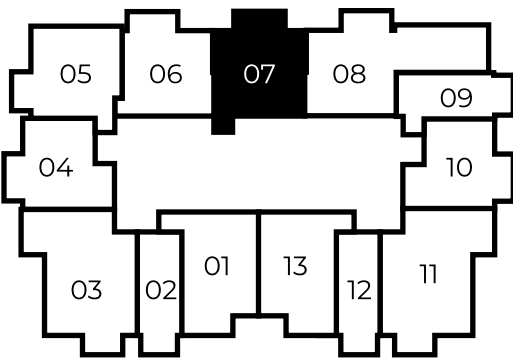
Dubai Marina view



Jumeirah golf estates view

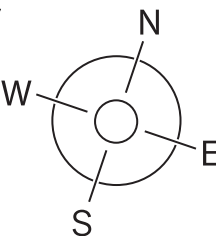
Floor 13-22

Dubai Marina view



Jumeirah golf estates view

All drawings and dimensions are approximate. Drawings not to scale and are subject to change without notice. The developer reserves the right to make revisions. The units are measured at typical floor in the building and columns may vary in size depending on the floor level. The Furnishings and accessories shown are for representation only. The length and width of the Unit and balcony varies depending on which floor and which orientation the unit is located within the building to comply with the building authority regulations

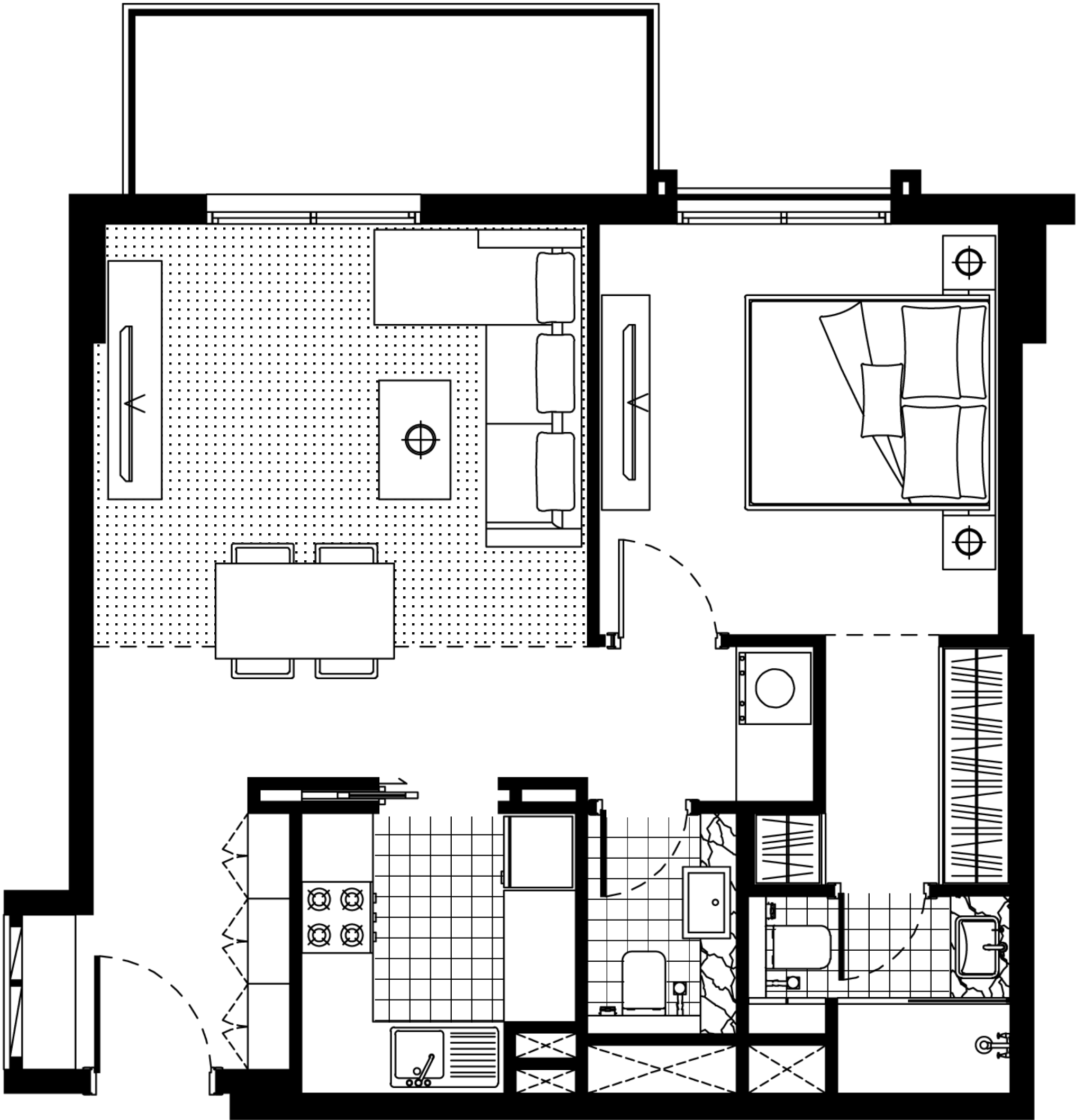


FH Residency

ONE BEDROOM

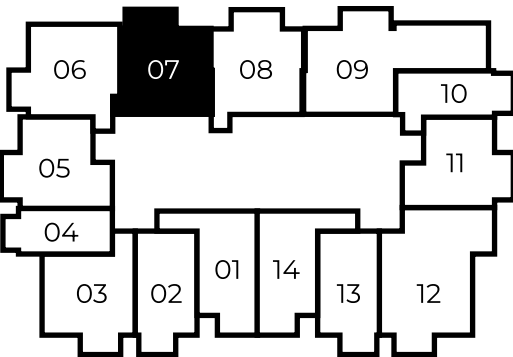
TYPE B

indoor	637 SQ FT	59,2 SQ MT
balcony	77 SQ FT	7,2 SQ MT
<hr/>		
total	714 SQ FT	66,4 SQ MT



Floor 2-11

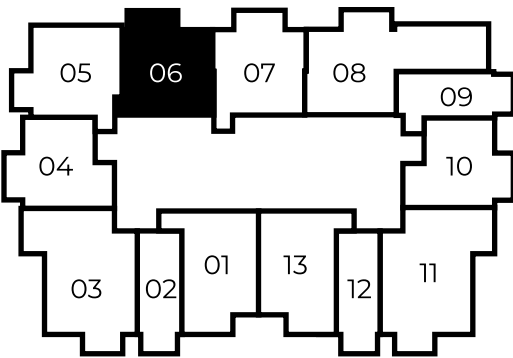
Dubai Marina view



Jumeirah golf estates view

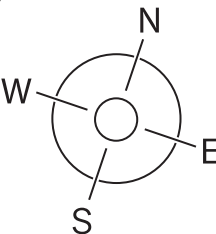
Floor 13-22

Dubai Marina view



Jumeirah golf estates view

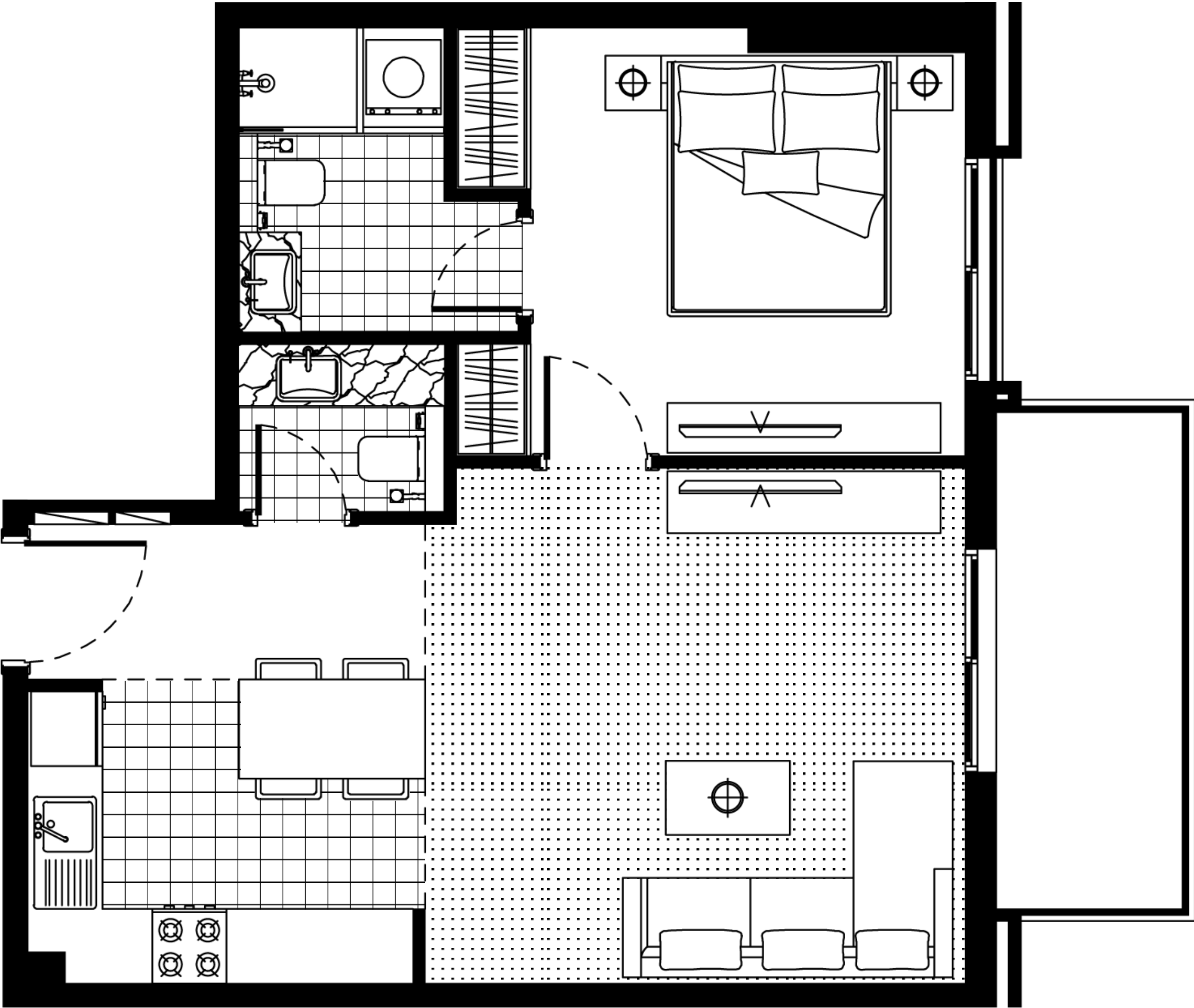
All drawings and dimensions are approximate. Drawings not to scale and are subject to change without notice. The developer reserves the right to make revisions. The units are measured at typical floor in the building and columns may vary in size depending on the floor level. The Furnishings and accessories shown are for representation only. The length and width of the Unit and balcony varies depending on which floor and which orientation the unit is located within the building to comply with the building authority regulations



FH Residency

ONE BEDROOM

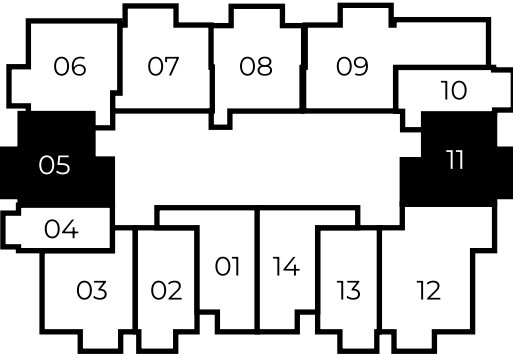
TYPE C



indoor	597 SQ FT	55,5 SQ MT
balcony	72 SQ FT	6,7 SQ MT
<hr/>		
total	669 SQ FT	62,2 SQ MT

Floor 2-11

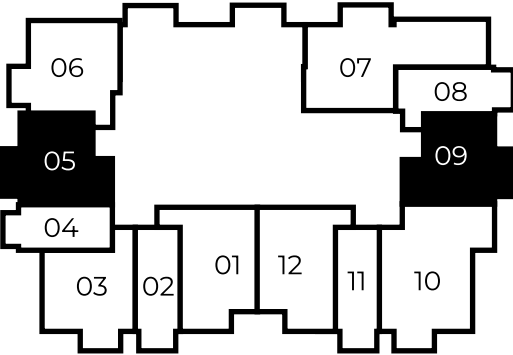
Dubai Marina view



Jumeirah golf estates view

Floor 12

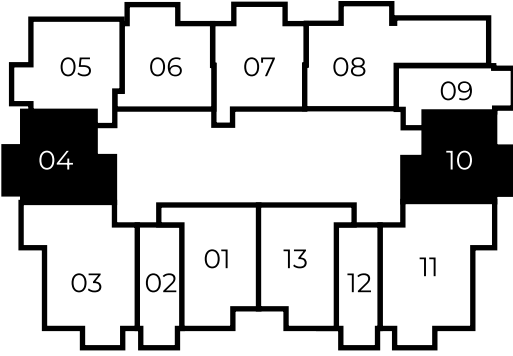
Dubai Marina view



Jumeirah golf estates view

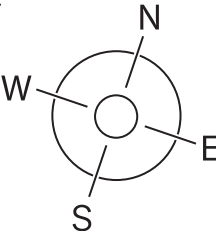
Floor 13-22

Dubai Marina view



Jumeirah golf estates view

All drawings and dimensions are approximate. Drawings not to scale and are subject to change without notice. The developer reserves the right to make revisions. The units are measured at typical floor in the building and columns may vary in size depending on the floor level. The Furnishings and accessories shown are for representation only. The length and width of the Unit and balcony varies depending on which floor and which orientation the unit is located within the building to comply with the building authority regulations

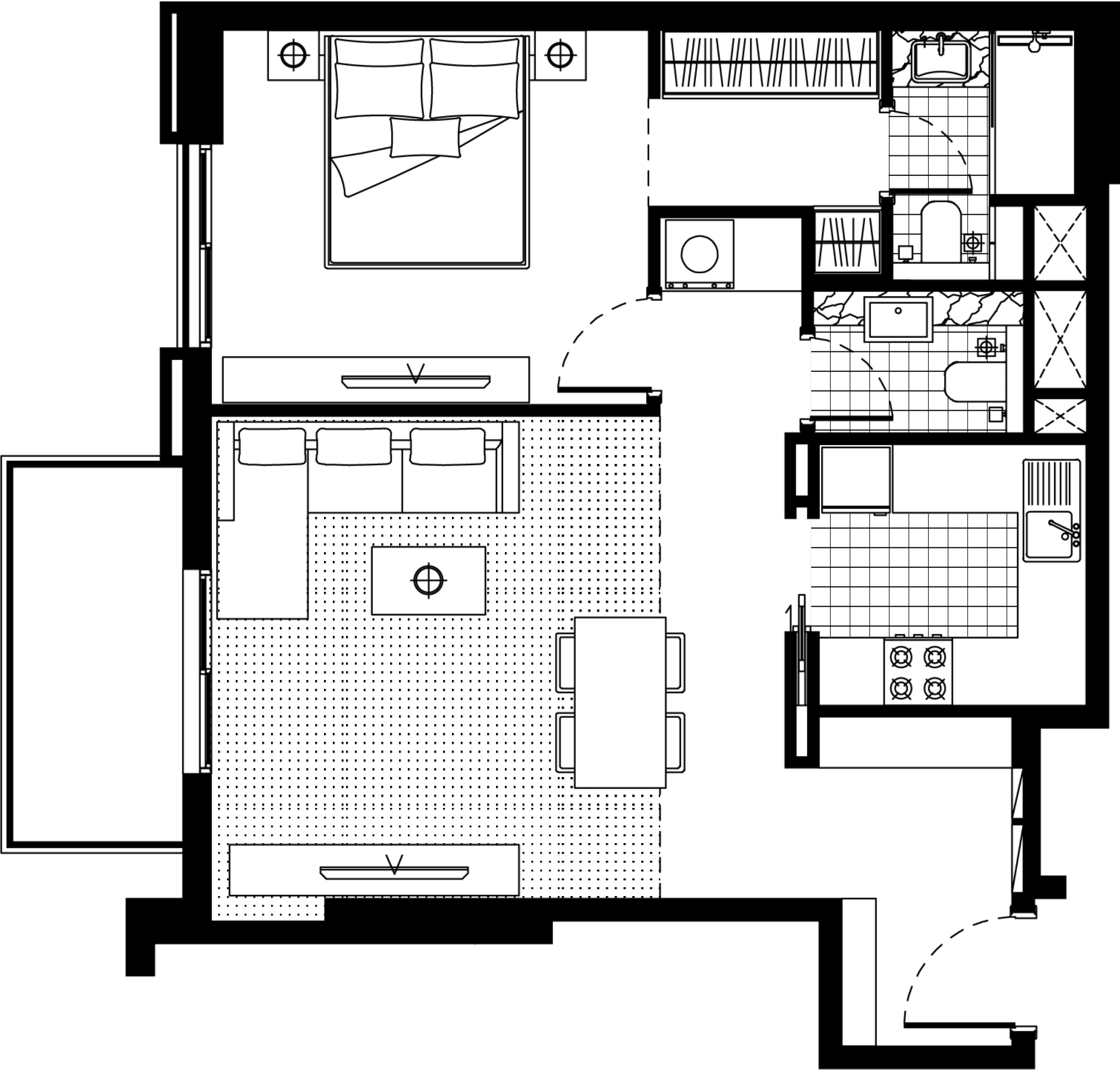


FH Residency

ONE BEDROOM

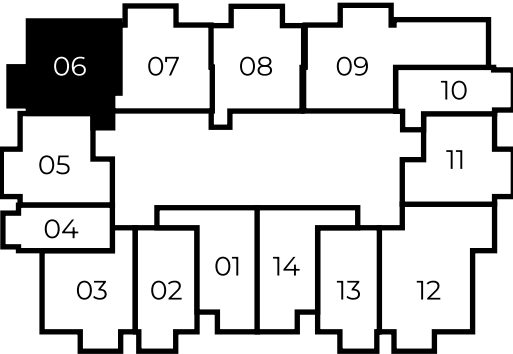
TYPE D

indoor	696 SQ FT	64,7 SQ MT
balcony	60 SQ FT	5,6 SQ MT
<hr/>		
total	756 SQ FT	70,3 SQ MT



Floor 2-11

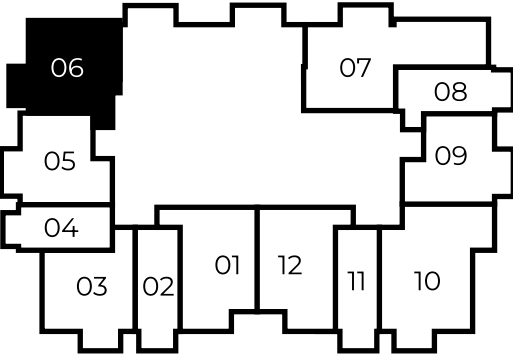
Dubai Marina view



Jumeirah golf estates view

Floor 12

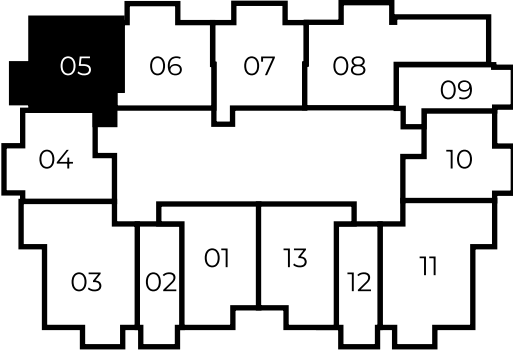
Dubai Marina view



Jumeirah golf estates view

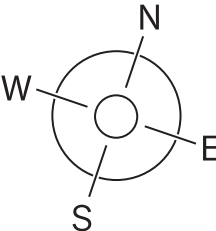
Floor 13-22

Dubai Marina view



Jumeirah golf estates view

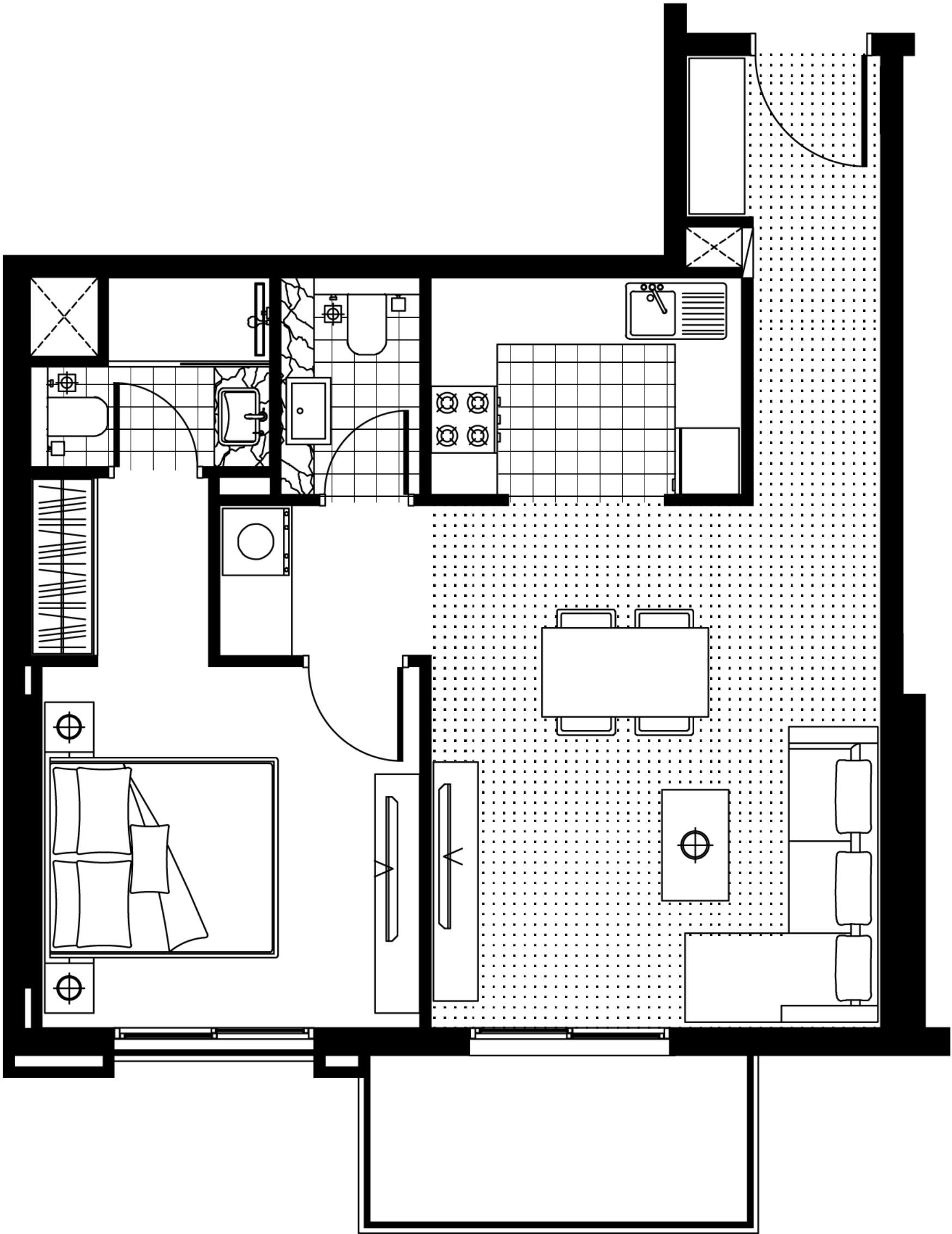
All drawings and dimensions are approximate. Drawings not to scale and are subject to change without notice. The developer reserves the right to make revisions. The units are measured at typical floor in the building and columns may vary in size depending on the floor level. The Furnishings and accessories shown are for representation only. The length and width of the Unit and balcony varies depending on which floor and which orientation the unit is located within the building to comply with the building authority regulations



FH Residency

ONE BEDROOM

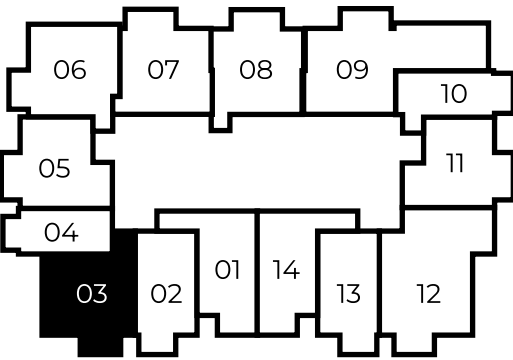
TYPE E



indoor	645 SQ FT	60 SQ MT
balcony	61 SQ FT	5,7 SQ MT
<hr/>		
total	706 SQ FT	65,7 SQ MT

Floor 2-11

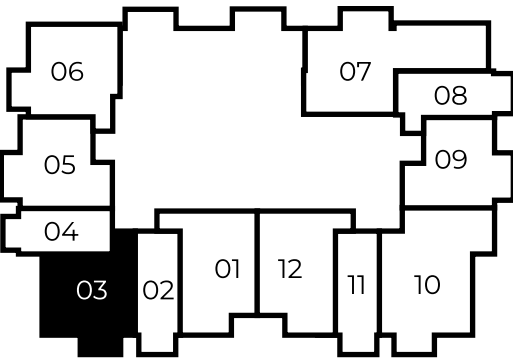
Dubai Marina view



Jumeirah golf estates view

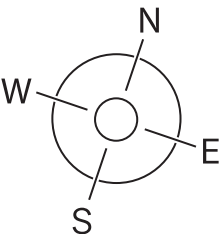
Floor 12

Dubai Marina view



Jumeirah golf estates view

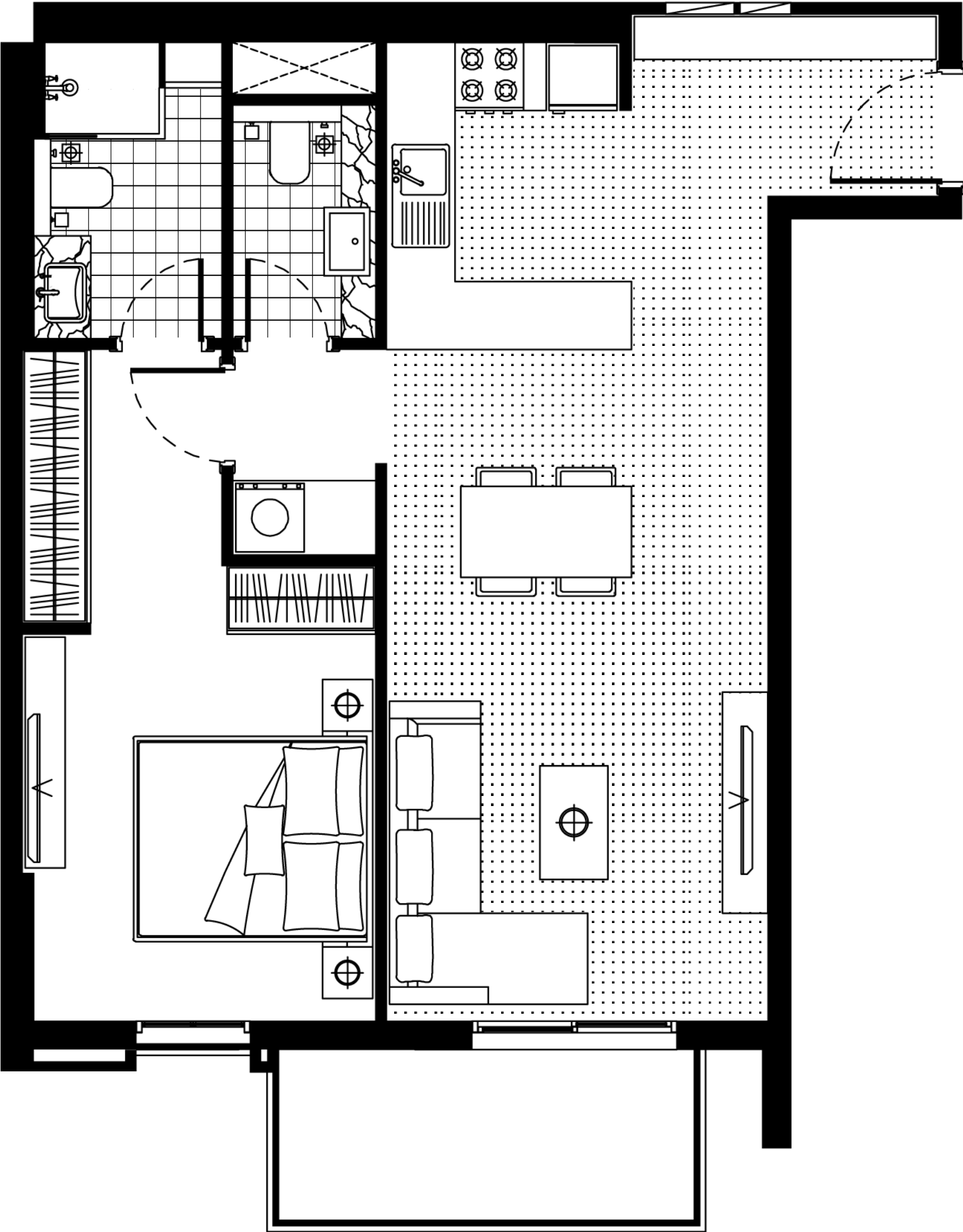
All drawings and dimensions are approximate. Drawings not to scale and are subject to change without notice. The developer reserves the right to make revisions. The units are measured at typical floor in the building and columns may vary in size depending on the floor level. The Furnishings and accessories shown are for representation only. The length and width of the Unit and balcony varies depending on which floor and which orientation the unit is located within the building to comply with the building authority regulations



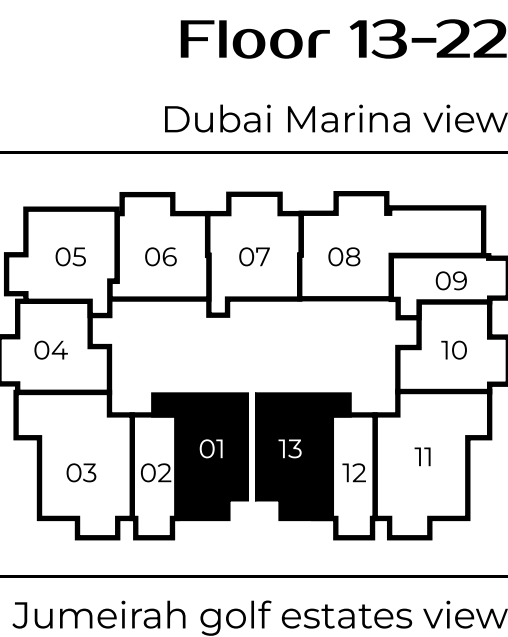
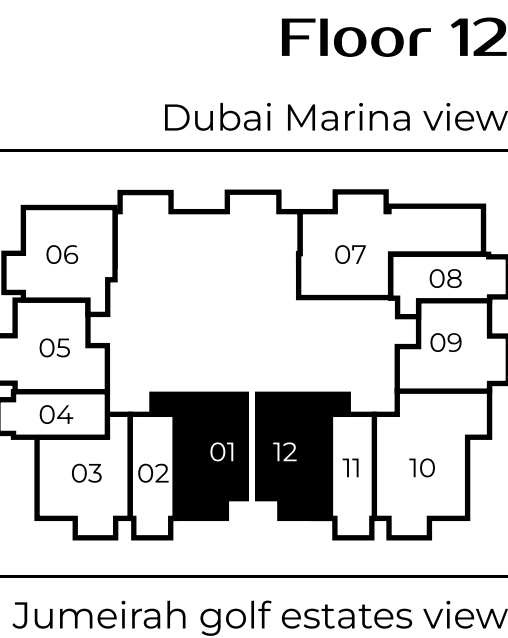
FH Residency

ONE BEDROOM

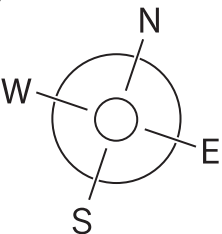
TYPE F



indoor	673 SQ FT	62,5 SQ MT
balcony	66 SQ FT	6,1 SQ MT
<hr/>		
total	739 SQ FT	68,6 SQ MT

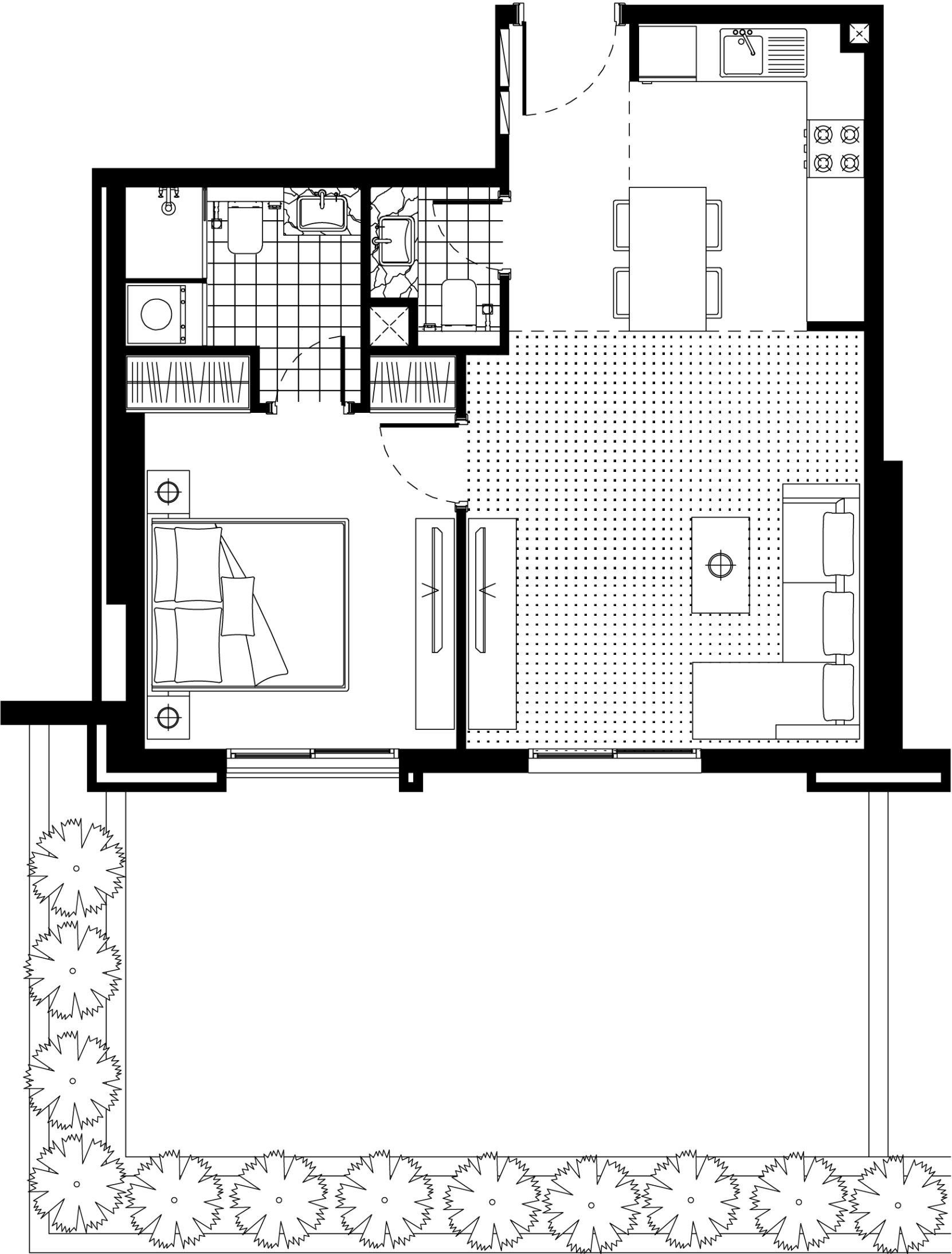


All drawings and dimensions are approximate. Drawings not to scale and are subject to change without notice. The developer reserves the right to make revisions. The units are measured at typical floor in the building and columns may vary in size depending on the floor level. The Furnishings and accessories shown are for representation only. The length and width of the Unit and balcony varies depending on which floor and which orientation the unit is located within the building to comply with the building authority regulations

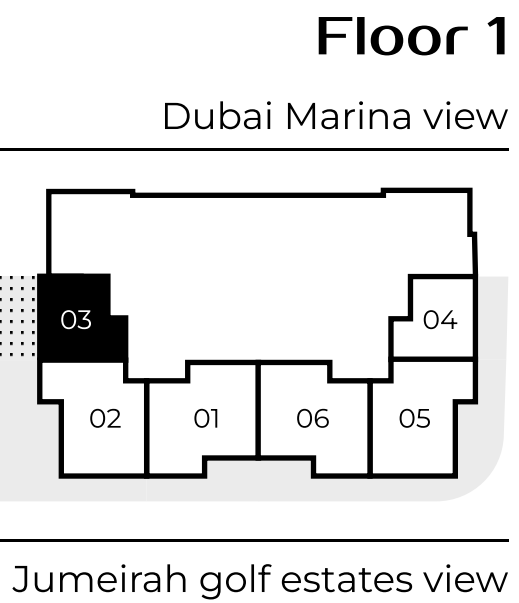


FH Residency

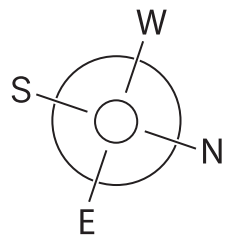
ONE BEDROOM GARDEN HOUSE A



indoor	594 SQ FT	55,2 SQ MT
garden	350 SQ FT	32,5 SQ MT
<hr/>		
total	944 SQ FT	87,7 SQ MT



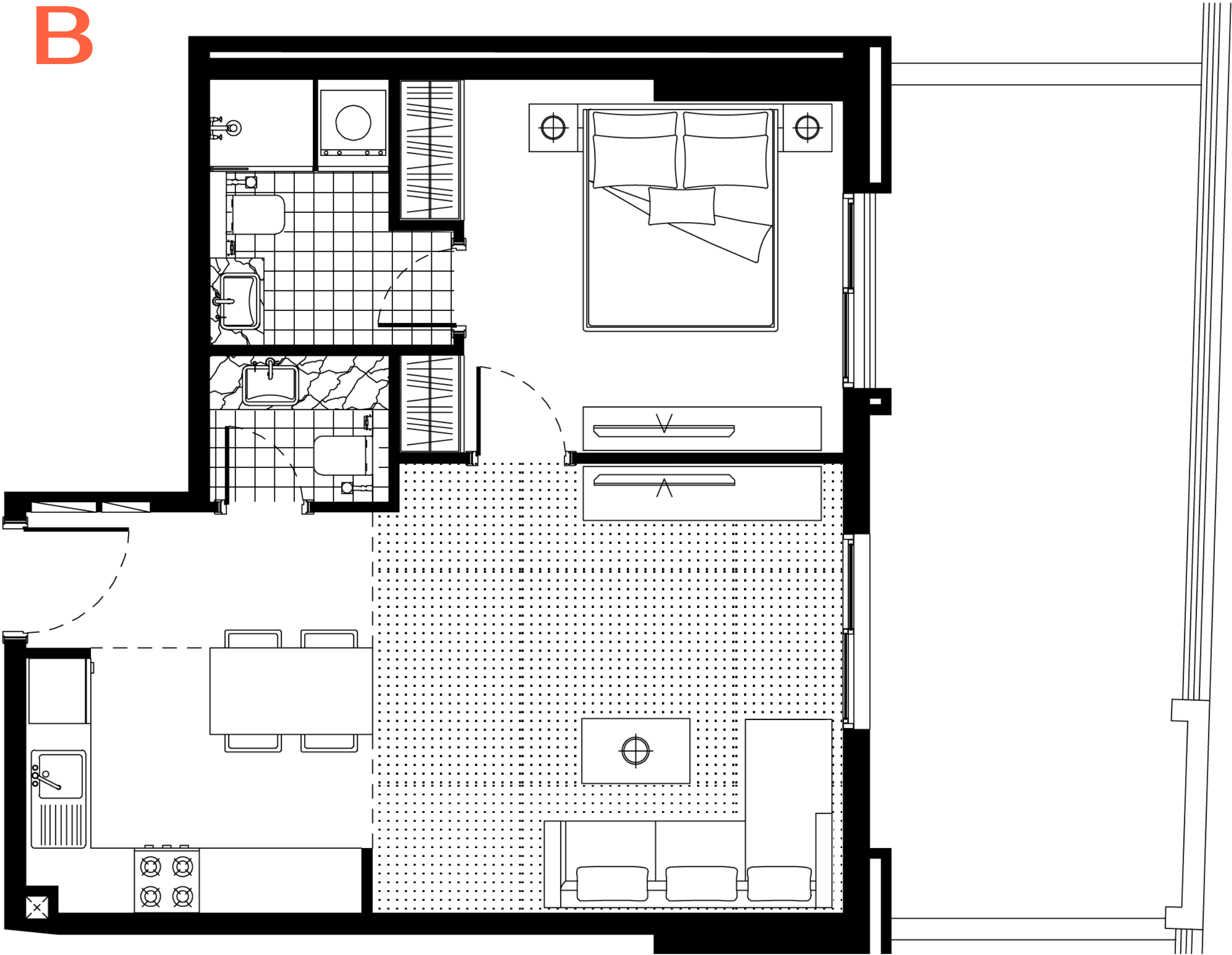
All drawings and dimensions are approximate. Drawings not to scale and are subject to change without notice. The developer reserves the right to make revisions. The units are measured at typical floor in the building and columns may vary in size depending on the floor level. The Furnishings and accessories shown are for representation only. The length and width of the Unit and balcony varies depending on which floor and which orientation the unit is located within the building to comply with the building authority regulations



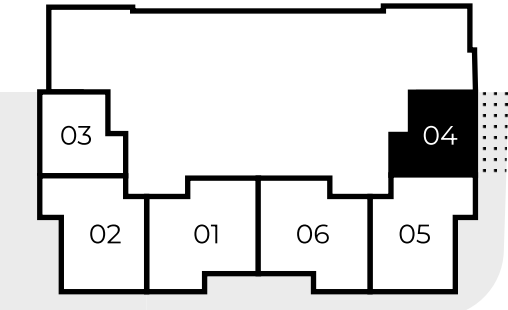
FH Residency

ONE BEDROOM GARDEN HOUSE B

indoor	592 SQ FT	55,5 SQ MT
garden	258 SQ FT	24 SQ MT
<hr/>		
total	850 SQ FT	79,5 SQ MT

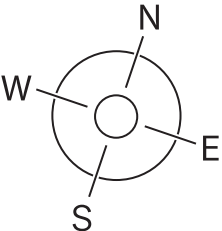


Floor 1
Dubai Marina view



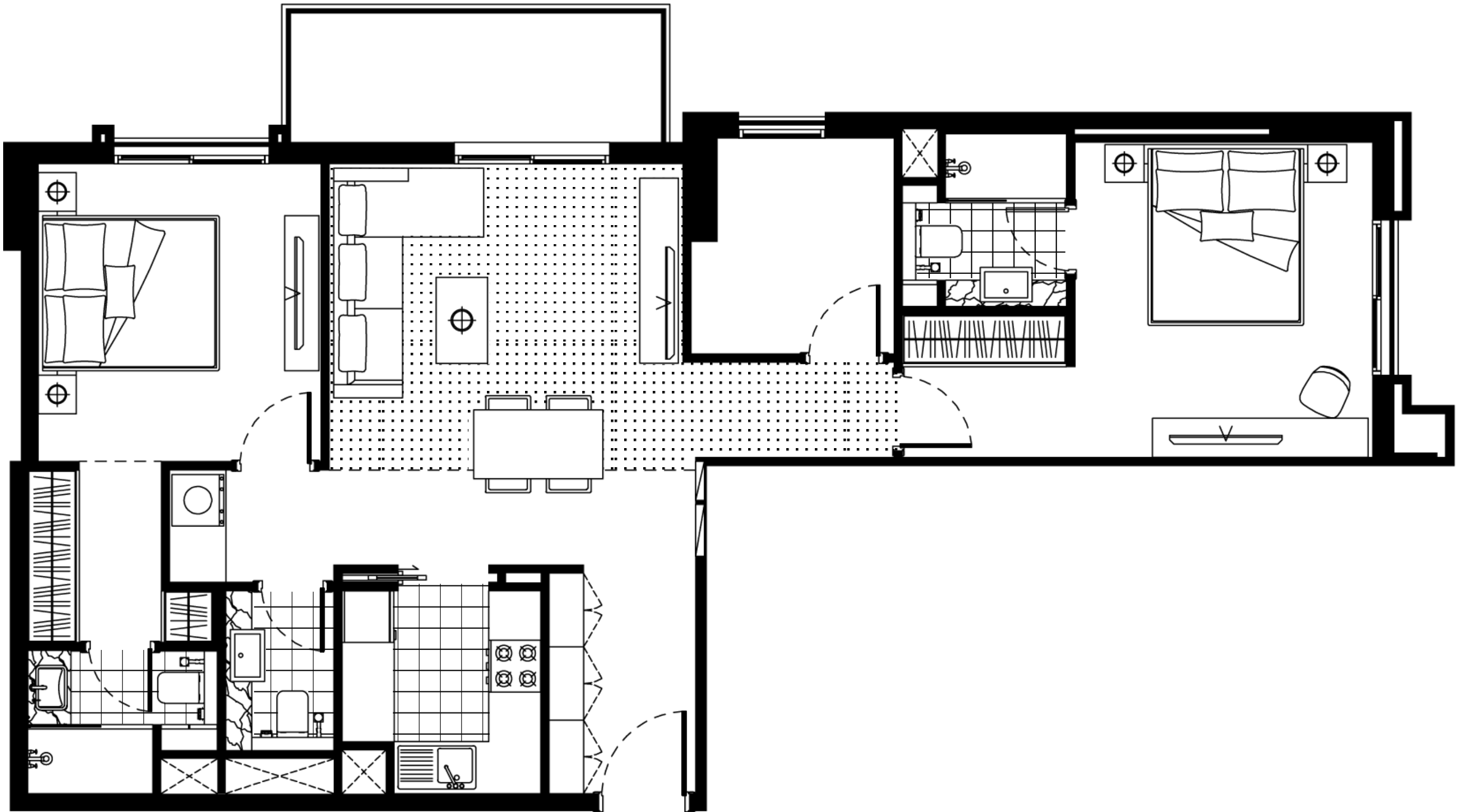
Jumeirah golf estates view

All drawings and dimensions are approximate. Drawings not to scale and are subject to change without notice. The developer reserves the right to make revisions. The units are measured at typical floor in the building and columns may vary in size depending on the floor level. The Furnishings and accessories shown are for representation only. The length and width of the Unit and balcony varies depending on which floor and which orientation the unit is located within the building to comply with the building authority regulations



TWO BEDROOM

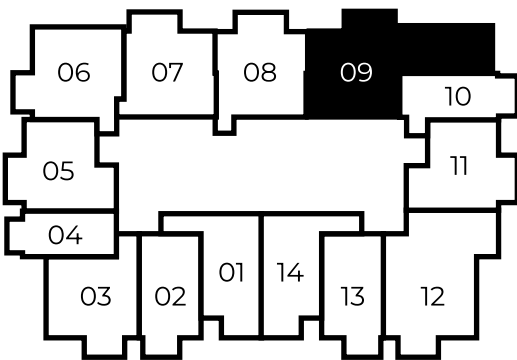
TYPE A



indoor	983 SQ FT	91,3 SQ MT
balcony	77 SQ FT	7,2 SQ MT
<hr/>		
total	1060 SQ FT	98,5 SQ MT

Floor 2-11

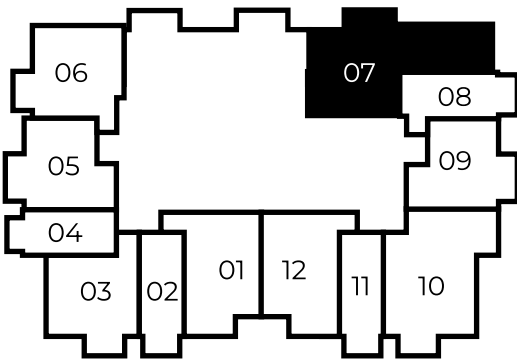
Dubai Marina view



Jumeirah golf estates view

Floor 12

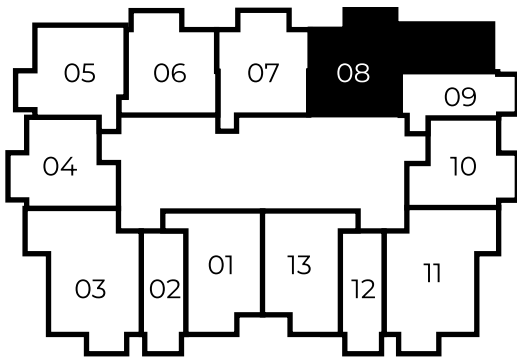
Dubai Marina view



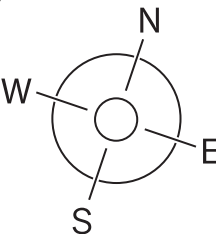
Jumeirah golf estates view

Floor 13-22

Dubai Marina view

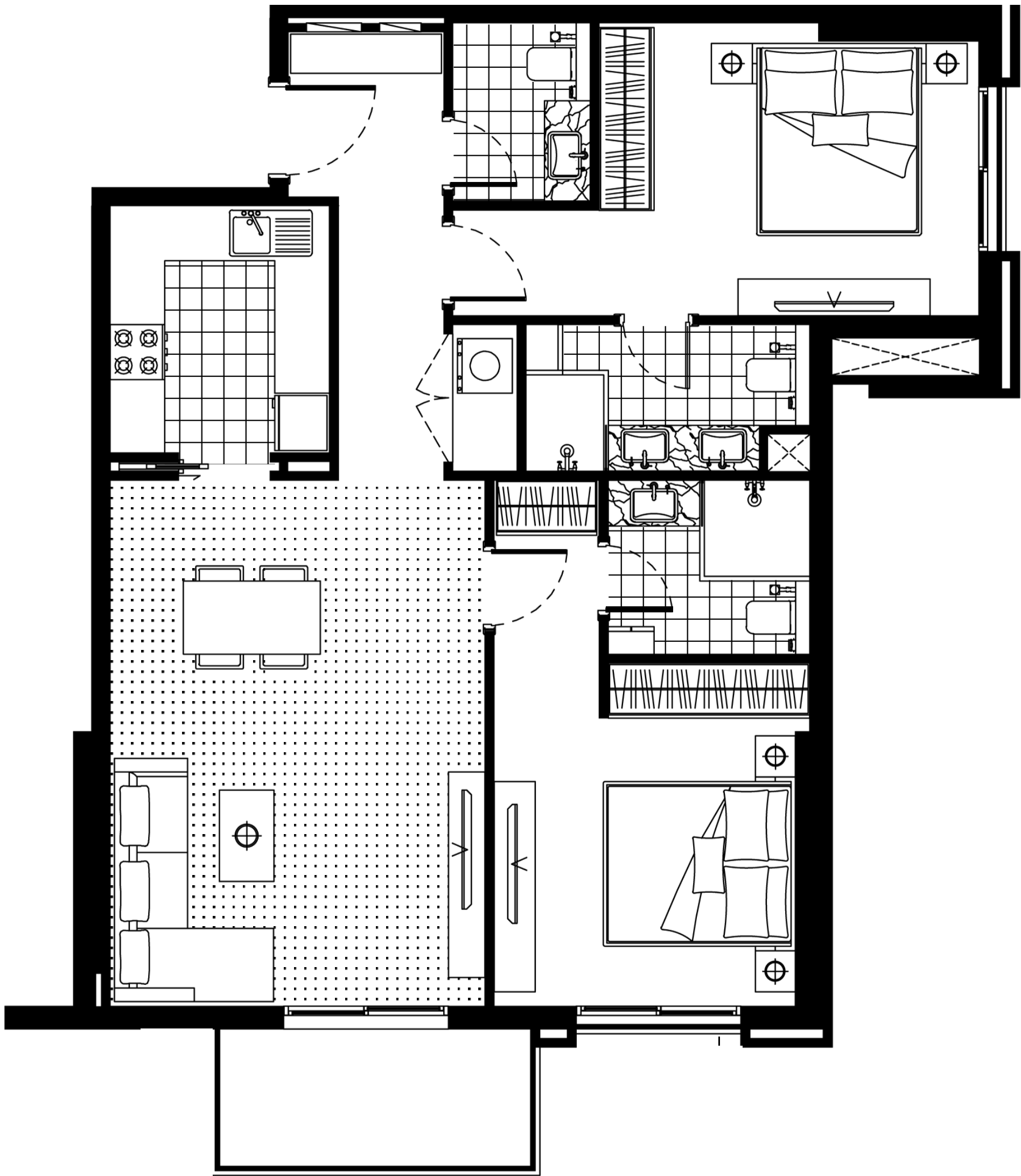


Jumeirah golf estates view



FH Residency

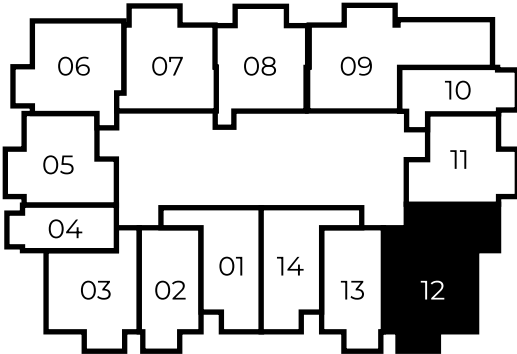
TWO BEDROOM TYPE B



indoor	979 SQ FT	91 SQ MT
balcony	61 SQ FT	5,7 SQ MT
<hr/>		
total	1040 SQ FT	96,7 SQ MT

Floor 2-11

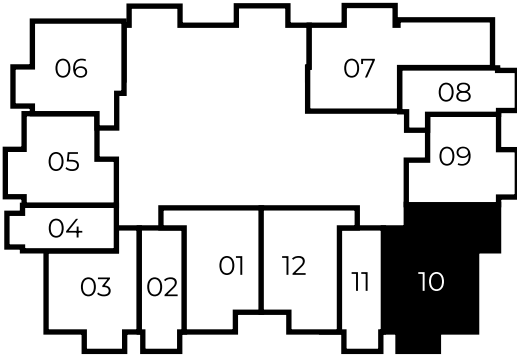
Dubai Marina view



Jumeirah golf estates view

Floor 12

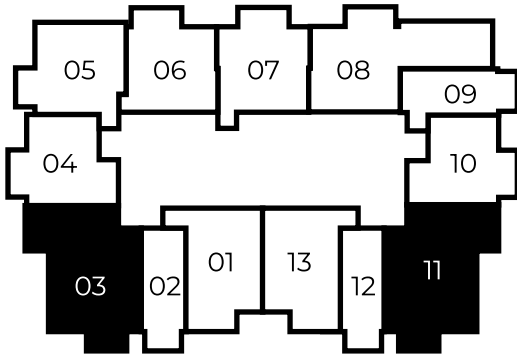
Dubai Marina view



Jumeirah golf estates view

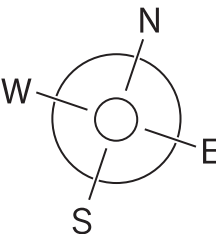
Floor 13-22

Dubai Marina view



Jumeirah golf estates view

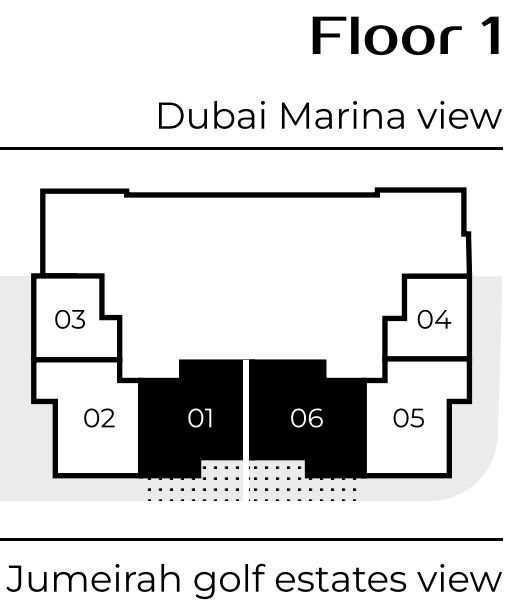
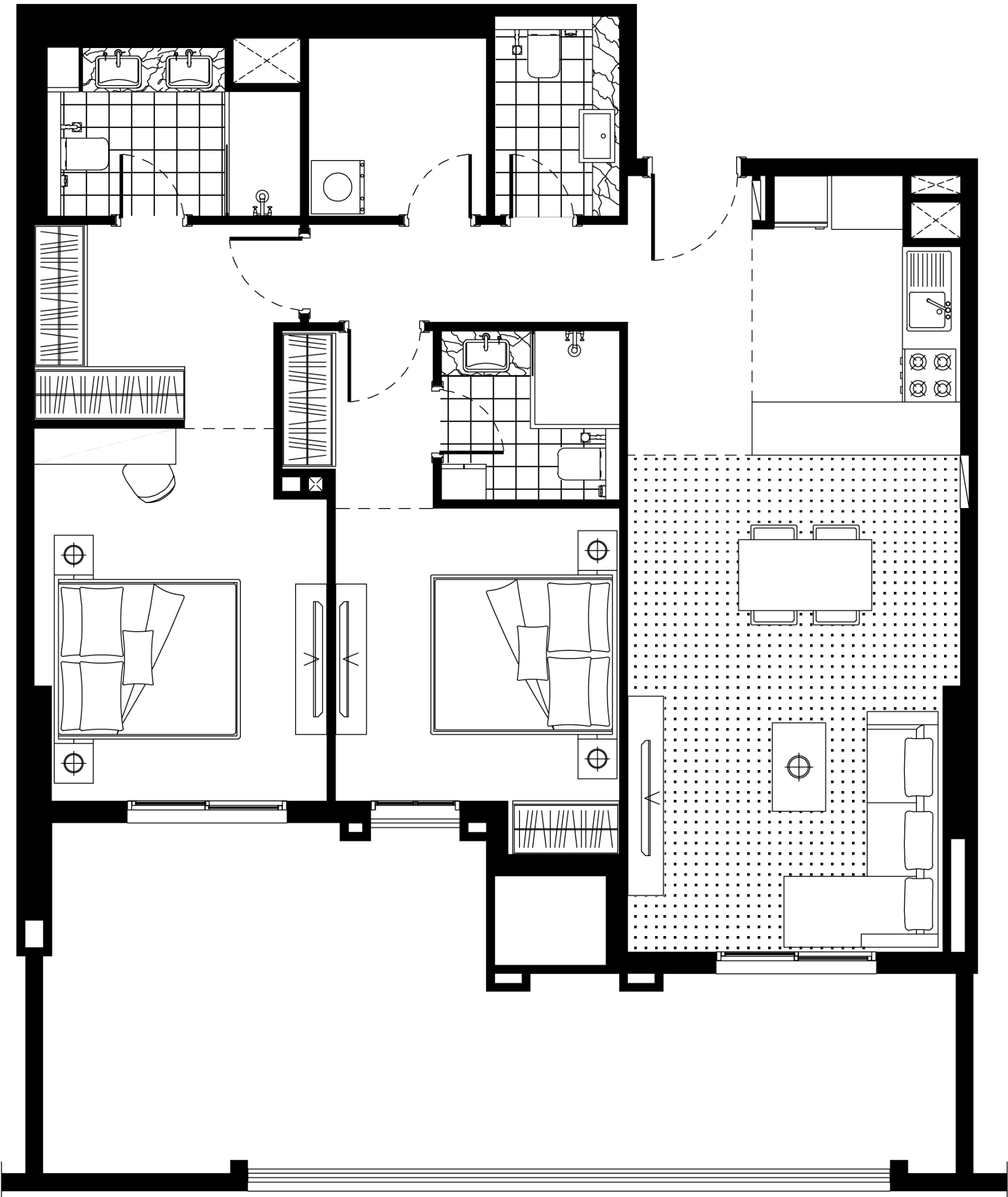
All drawings and dimensions are approximate. Drawings not to scale and are subject to change without notice. The developer reserves the right to make revisions. The units are measured at typical floor in the building and columns may vary in size depending on the floor level. The Furnishings and accessories shown are for representation only. The length and width of the Unit and balcony varies depending on which floor and which orientation the unit is located within the building to comply with the building authority regulations



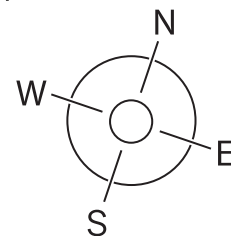
FH Residency

TWO BEDROOM GARDEN HOUSE A

indoor	1023 SQ FT	95,1 SQ MT
balcony	368 SQ FT	34,2 SQ MT
<hr/>		
total	1391 SQ FT	129,3 SQ MT

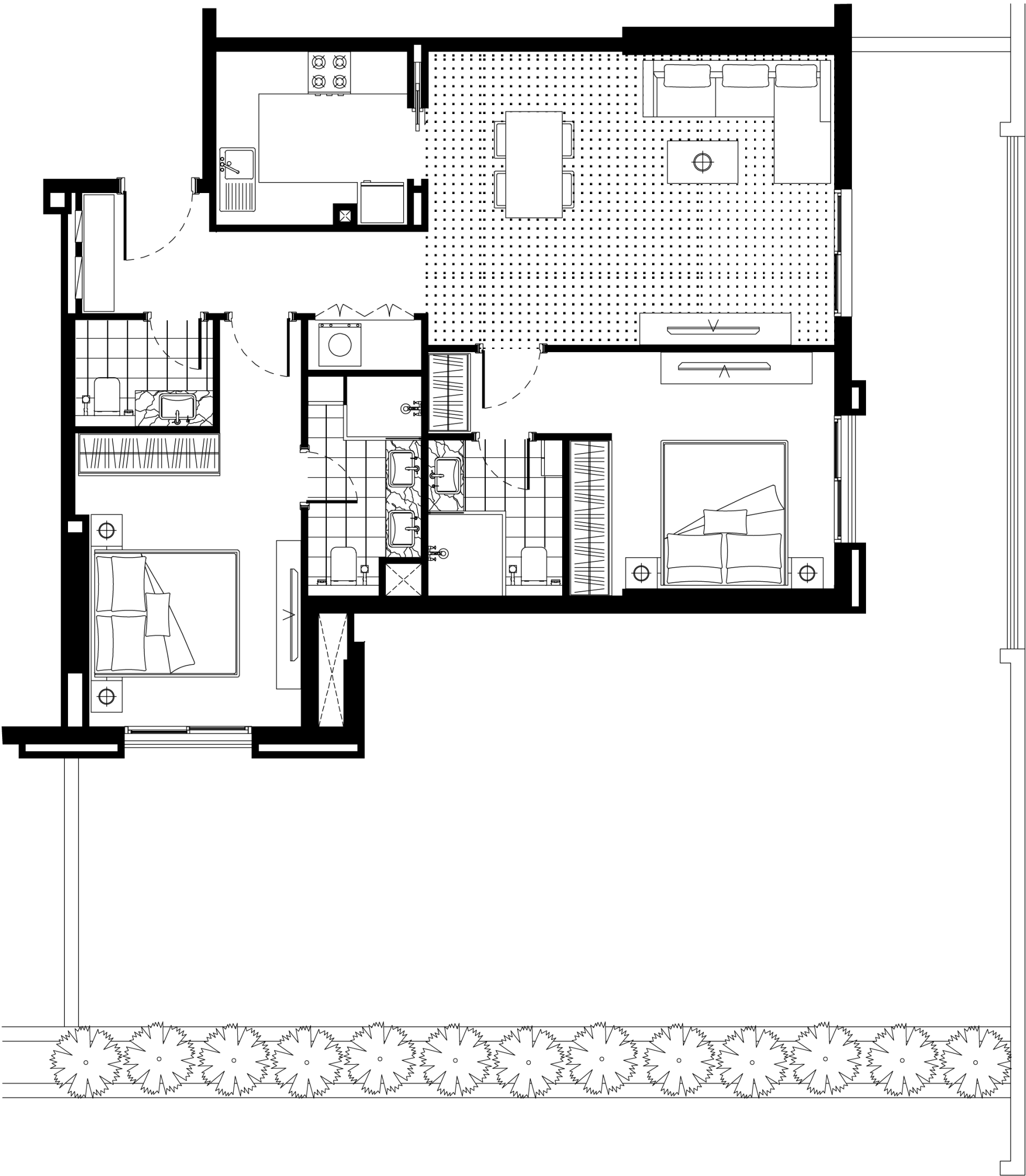


All drawings and dimensions are approximate. Drawings not to scale and are subject to change without notice. The developer reserves the right to make revisions. The units are measured at typical floor in the building and columns may vary in size depending on the floor level. The Furnishings and accessories shown are for representation only. The length and width of the Unit and balcony varies depending on which floor and which orientation the unit is located within the building to comply with the building authority regulations

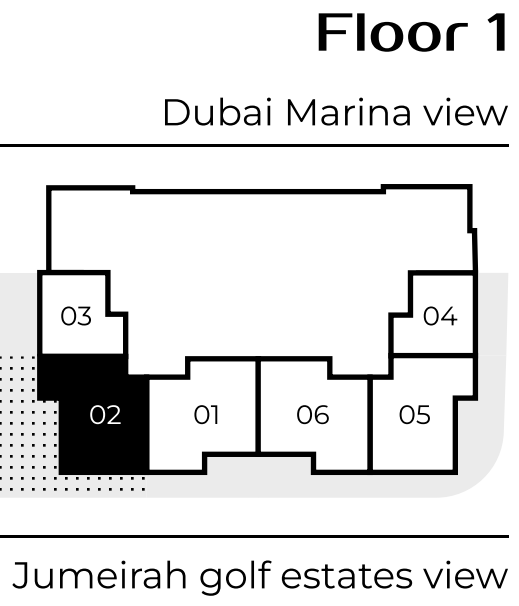


FH Residency

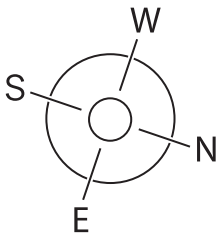
TWO BEDROOM GARDEN HOUSE B



indoor	983 SQ FT	91,3 SQ MT
balcony	973 SQ FT	90,4 SQ MT
<hr/>		
total	1956 SQ FT	181,7 SQ MT



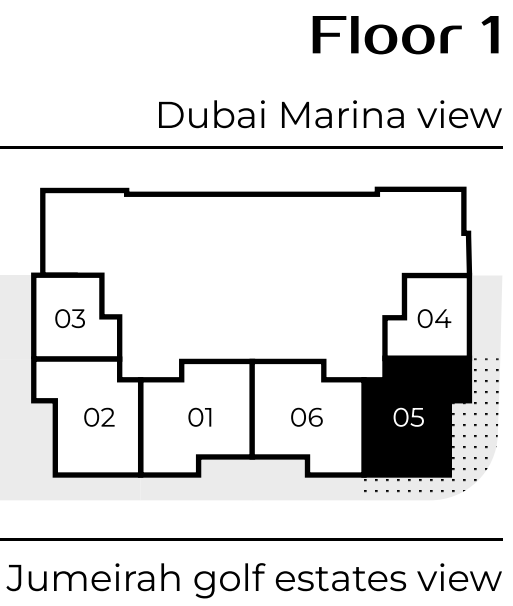
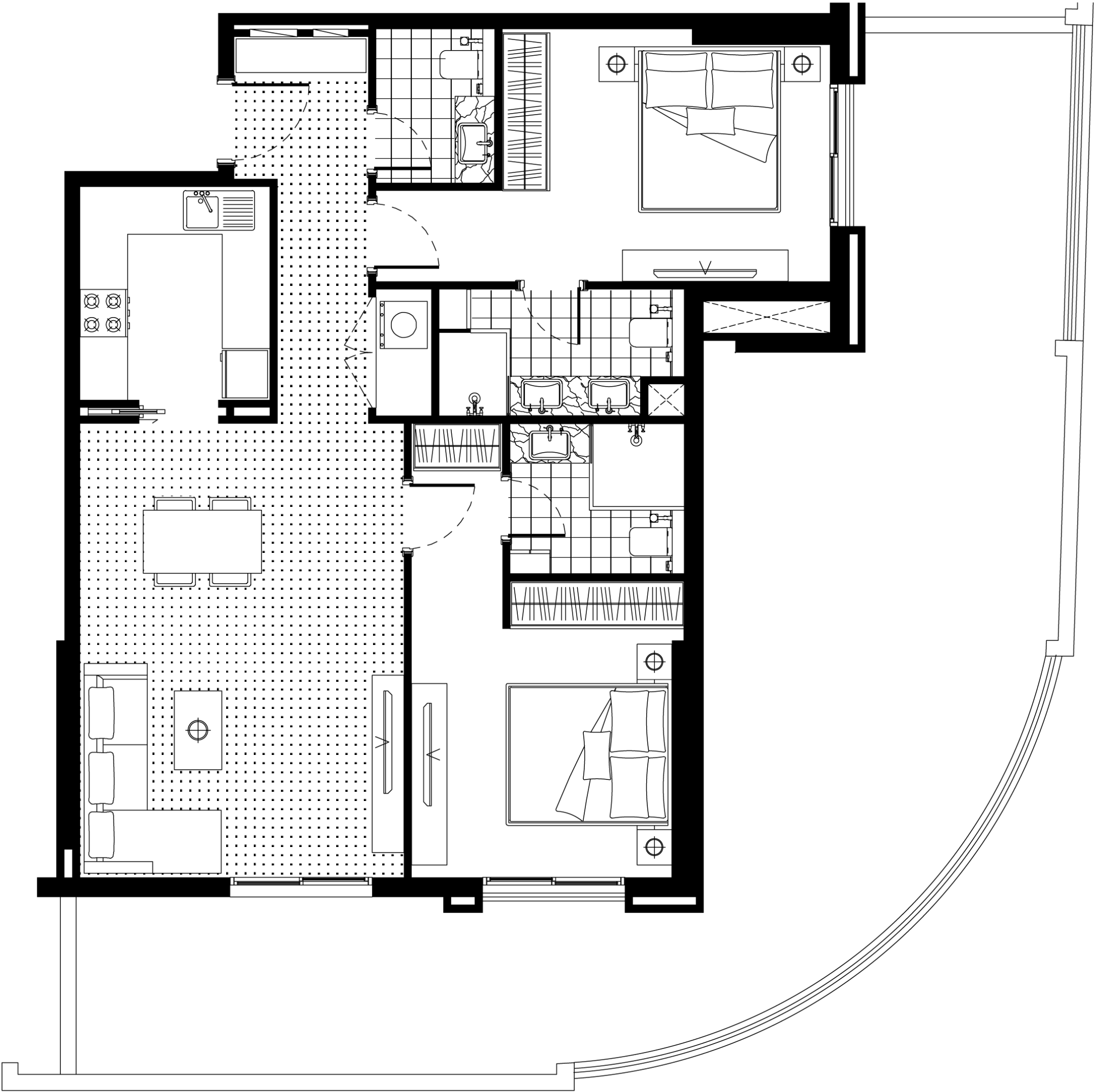
All drawings and dimensions are approximate. Drawings not to scale and are subject to change without notice. The developer reserves the right to make revisions. The units are measured at typical floor in the building and columns may vary in size depending on the floor level. The Furnishings and accessories shown are for representation only. The length and width of the Unit and balcony varies depending on which floor and which orientation the unit is located within the building to comply with the building authority regulations



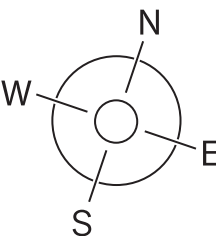
FH Residency

TWO BEDROOM GARDEN HOUSE C

indoor	975 SQ FT	91 SQ MT
balcony	678 SQ FT	63 SQ MT
<hr/>		
total	1653 SQ FT	154 SQ MT



All drawings and dimensions are approximate. Drawings not to scale and are subject to change without notice. The developer reserves the right to make revisions. The units are measured at typical floor in the building and columns may vary in size depending on the floor level. The Furnishings and accessories shown are for representation only. The length and width of the Unit and balcony varies depending on which floor and which orientation the unit is located within the building to comply with the building authority regulations

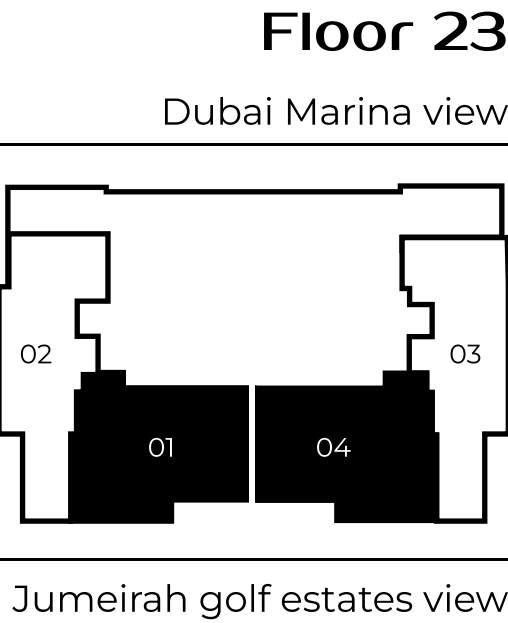


FH Residency

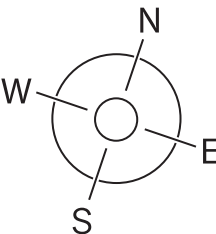
THREE BEDROOM TYPE A



indoor	1293 SQ FT	120,2 SQ MT
balcony	317 SQ FT	29,5 SQ MT
<hr/>		
total	1610 SQ FT	149,7 SQ MT



All drawings and dimensions are approximate. Drawings not to scale and are subject to change without notice. The developer reserves the right to make revisions. The units are measured at typical floor in the building and columns may vary in size depending on the floor level. The Furnishings and accessories shown are for representation only. The length and width of the Unit and balcony varies depending on which floor and which orientation the unit is located within the building to comply with the building authority regulations



FH Residency

THREE BEDROOM

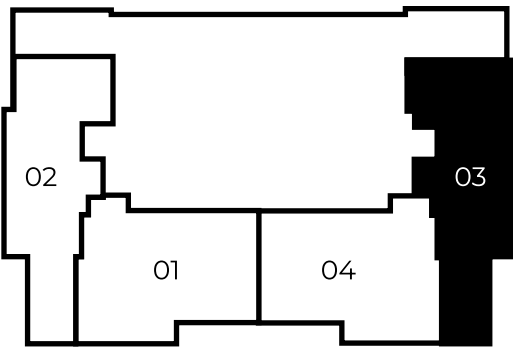
TYPE B



indoor	1299 SQ FT	120,7 SQ MT
balcony	254 SQ FT	23,6 SQ MT
<hr/>		
total	1553 SQ FT	144,3 SQ MT

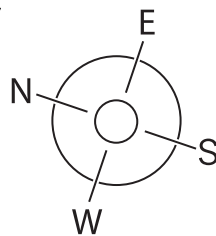
Floor 23

Dubai Marina view



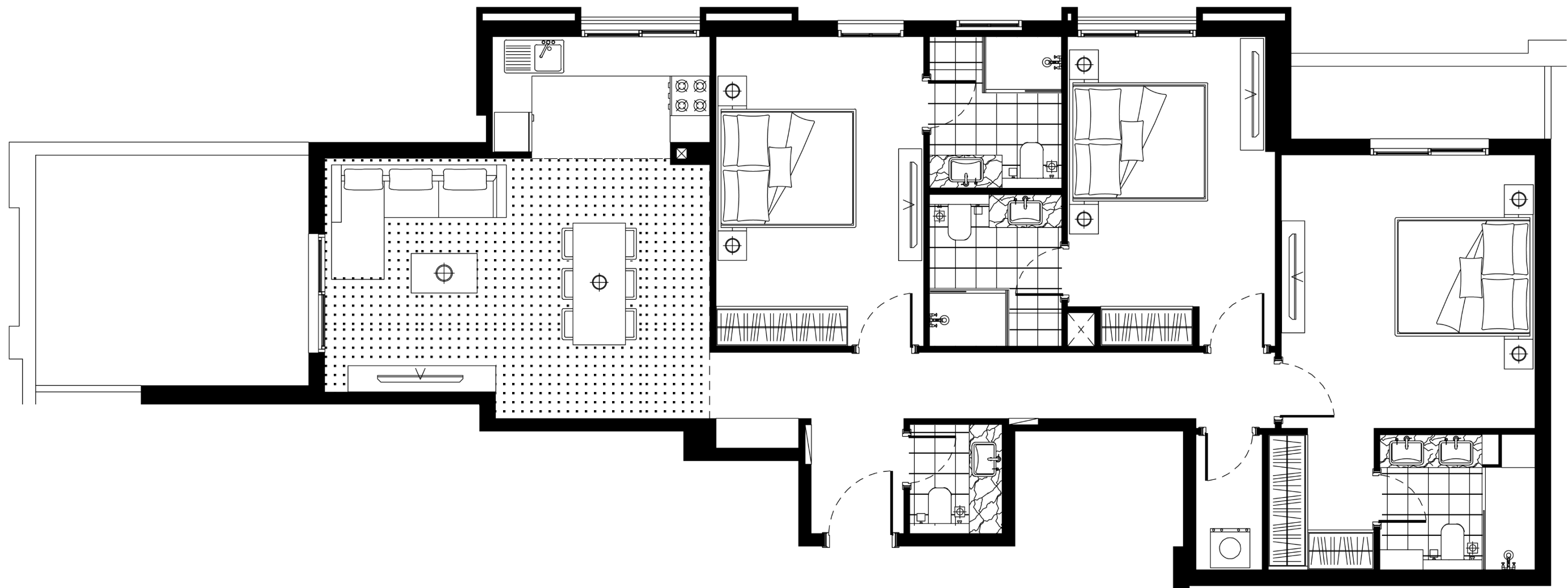
Jumeirah golf estates view

All drawings and dimensions are approximate. Drawings not to scale and are subject to change without notice. The developer reserves the right to make revisions. The units are measured at typical floor in the building and columns may vary in size depending on the floor level. The Furnishings and accessories shown are for representation only. The length and width of the Unit and balcony varies depending on which floor and which orientation the unit is located within the building to comply with the building authority regulations



THREE BEDROOM

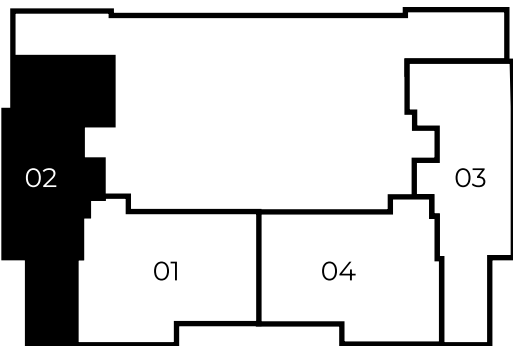
TYPE C



indoor	1302 SQ FT	121 SQ MT
balcony	233 SQ FT	21,7 SQ MT
<hr/>		
total	1535 SQ FT	142,7 SQ MT

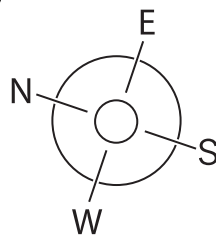
Floor 23

Dubai Marina view



Jumeirah golf estates view

All drawings and dimensions are approximate. Drawings not to scale and are subject to change without notice. The developer reserves the right to make revisions. The units are measured at typical floor in the building and columns may vary in size depending on the floor level. The Furnishings and accessories shown are for representation only. The length and width of the Unit and balcony varies depending on which floor and which orientation the unit is located within the building to comply with the building authority regulations





BY
FORUM

FH Residency

Forum Real Estate Development. Disclaimer: The renderings and visualizations contained in this brochure are provided for illustrative and marketing purposes. While the information provided is believed to be accurate and reliable at the time of printing, only the information contained in the final Sales and Purchase Agreement will have any legal effect.

+971 48 374 200

FH-RESIDENCY.AE