



# AVENUE PARK TOWERS

AT WASL 1

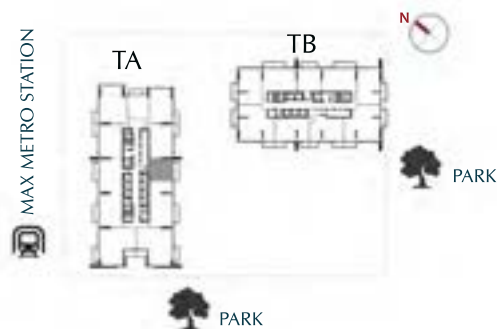
UNIT PLANS



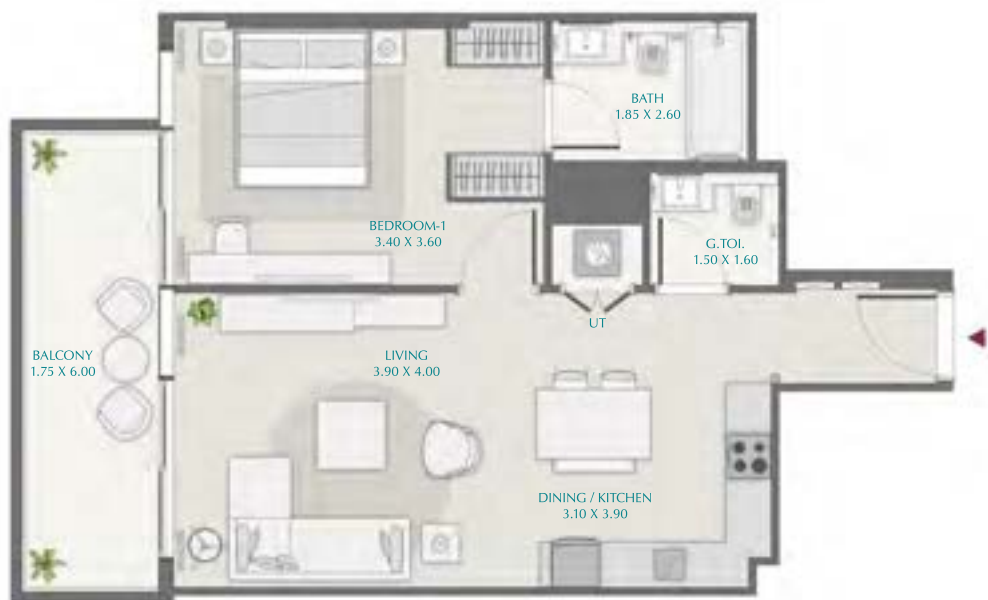
LEVELS: (9<sup>TH</sup>-20<sup>TH</sup> , 22<sup>ND</sup>-42<sup>ND</sup>)

1BR-A - (904, 1006-2006, 2206-4206)

SUITE AREA	BALCONY AREA	TOTAL AREA
693.96 ft <sup>2</sup> = 64.47 m <sup>2</sup>	122.49 ft <sup>2</sup> = 11.38 m <sup>2</sup>	816.45 ft <sup>2</sup> = 75.85 m <sup>2</sup>



“All room dimensions are in metric and measured to structural elements and exclude wall finishes and construction tolerances. All materials, dimensions & drawings features and amenities are approximate at the time of printing, Information subject to change without notice. Actual suite areas may vary from the stated area. Drawings are not to scale E&EO. The developer reserves the right to make revisions.”



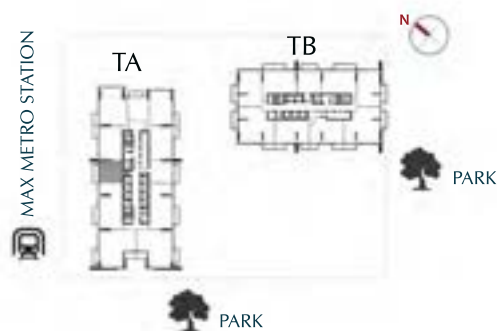
LEVELS: (22<sup>ND</sup>-42<sup>ND</sup>)

1BR-A -1 (2205-2505, 2905-3405, 3805-4205)

SUITE AREA	BALCONY AREA	TOTAL AREA
706.87 ft <sup>2</sup> = 65.67 m <sup>2</sup>	122.39 ft <sup>2</sup> = 11.37 m <sup>2</sup>	829.26 ft <sup>2</sup> = 77.04 m <sup>2</sup>

1BR-A -1 (2605-2805, 3505-3705)

SUITE AREA	BALCONY AREA	TOTAL AREA
711.29 ft <sup>2</sup> = 66.08 m <sup>2</sup>	122.39 ft <sup>2</sup> = 11.37 m <sup>2</sup>	833.68 ft <sup>2</sup> = 77.45 m <sup>2</sup>



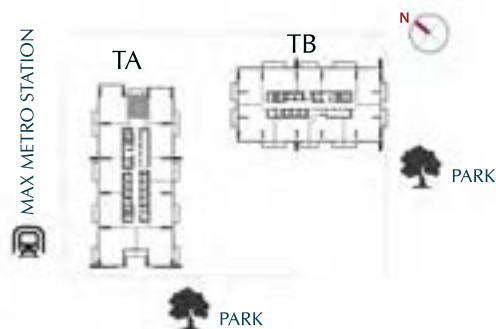
“All room dimensions are in metric and measured to structural elements and exclude wall finishes and construction tolerances. All materials, dimensions & drawings features and amenities are approximate at the time of printing, Information subject to change without notice. Actual suite areas may vary from the stated area. Drawings are not to scale E&EO. The developer reserves the right to make revisions.”



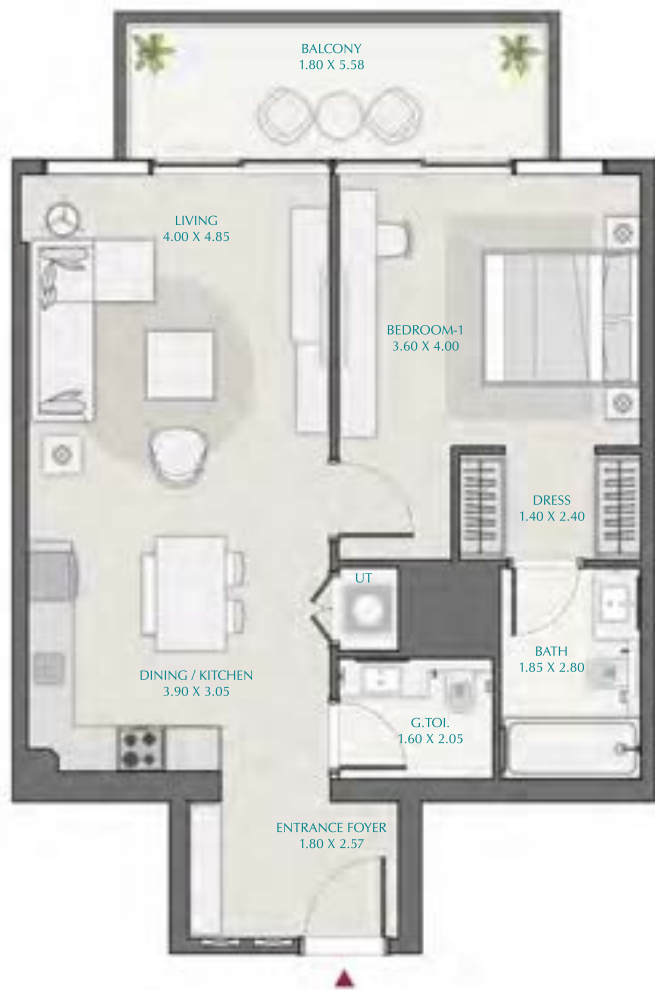
LEVELS: (9<sup>TH</sup>-20<sup>TH</sup> , 22<sup>ND</sup>-40<sup>TH</sup>)

1BR-B - (907, 1009-2009, 2209-4009)

SUITE AREA	BALCONY AREA	TOTAL AREA
625.18 ft <sup>2</sup> = 58.08 m <sup>2</sup>	95.15 ft <sup>2</sup> = 8.84 m <sup>2</sup>	720.33 ft <sup>2</sup> = 66.92 m <sup>2</sup>



“All room dimensions are in metric and measured to structural elements and exclude wall finishes and construction tolerances. All materials, dimensions & drawings features and amenities are approximate at the time of printing, Information subject to change without notice. Actual suite areas may vary from the stated area. Drawings are not to scale E&EO. The developer reserves the right to make revisions.”



LEVELS: (9<sup>TH</sup>-18<sup>TH</sup>, 20<sup>TH</sup>-36<sup>TH</sup>)

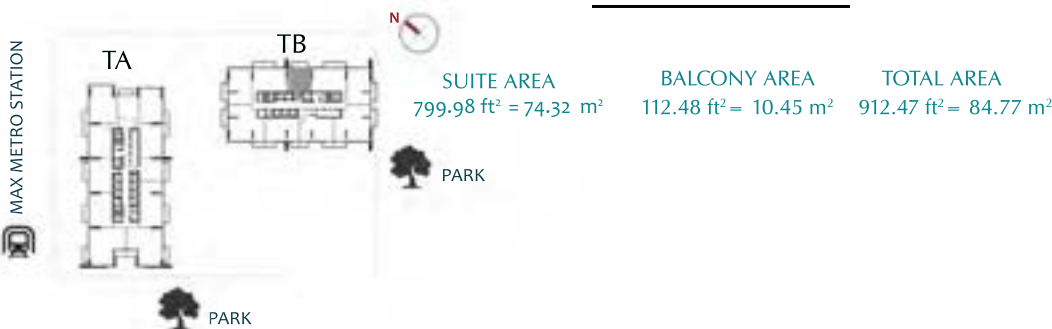
1BR-C: (901)

SUITE AREA	TERRACE AREA	TOTAL AREA
801.17 ft <sup>2</sup> = 74.43 m <sup>2</sup>	250.70 ft <sup>2</sup> = 23.29 m <sup>2</sup>	1051.86 ft <sup>2</sup> = 97.72 m <sup>2</sup>

1BR-C: (1001-1801)

SUITE AREA	BALCONY AREA	TOTAL AREA
800.63 ft <sup>2</sup> = 74.38 m <sup>2</sup>	112.48 ft <sup>2</sup> = 10.45 m <sup>2</sup>	913.11 ft <sup>2</sup> = 84.83 m <sup>2</sup>

1BR-C: (2001-3601)



"All room dimensions are in metric and measured to structural elements and exclude wall finishes and construction tolerances. All materials, dimensions & drawings features and amenities are approximate at the time of printing, Information subject to change without notice. Actual suite areas may vary from the stated area. Drawings are not to scale E&EO. The developer reserves the right to make revisions."



LEVELS: (9<sup>TH</sup>-20<sup>TH</sup> , 22<sup>ND</sup>-40<sup>TH</sup>)

TA-2BR-A-1 (909)

SUITE AREA	TERRACE AREA	TOTAL AREA
1072.31 ft <sup>2</sup> = 96.62 m <sup>2</sup>	706.23 ft <sup>2</sup> = 65.61 m <sup>2</sup>	1778.54 ft <sup>2</sup> = 165.23 m <sup>2</sup>

TA-2BR-A-2 (902)

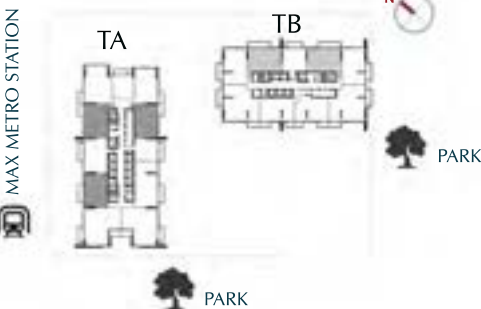
SUITE AREA	TERRACE AREA	TOTAL AREA
1037.01 ft <sup>2</sup> = 96.34 m <sup>2</sup>	720.22 ft <sup>2</sup> = 66.91 m <sup>2</sup>	1757.23 ft <sup>2</sup> = 163.25 m <sup>2</sup>

TA-2BR-A (1011-2011, 2211-2511, 2911-3411, 3811-4011)

SUITE AREA	BALCONY AREA	TOTAL AREA
1074.25 ft <sup>2</sup> = 99.80 m <sup>2</sup>	80.19 ft <sup>2</sup> = 7.45 m <sup>2</sup>	1154.44 ft <sup>2</sup> = 107.25 m <sup>2</sup>

TA-2BR-A-2 (1004-2004)

SUITE AREA	BALCONY AREA	TOTAL AREA
1036.79 ft <sup>2</sup> = 96.32 m <sup>2</sup>	122.49 ft <sup>2</sup> = 11.38 m <sup>2</sup>	1159.29 ft <sup>2</sup> = 107.70 m <sup>2</sup>



TA-2BR-A-1 (1007-2007, 2207-4007)

SUITE AREA	BALCONY AREA	TOTAL AREA
1054.23 ft <sup>2</sup> = 97.94 m <sup>2</sup>	80.19 ft <sup>2</sup> = 7.45 m <sup>2</sup>	1134.42 ft <sup>2</sup> = 105.39 m <sup>2</sup>

"All room dimensions are in metric and measured to structural elements and exclude wall finishes and construction tolerances. All materials, dimensions & drawings features and amenities are approximate at the time of printing, Information subject to change without notice. Actual suite areas may vary from the stated area. Drawings are not to scale E&EO. The developer reserves the right to make revisions."



LEVELS: (9<sup>TH</sup>-18<sup>TH</sup> , 20<sup>TH</sup>-36<sup>TH</sup>)

TB-2BR-A-3 (902)

SUITE AREA	TERRACE AREA	TOTAL AREA
1065.96 ft² = 99.03 m²	344.23 ft² = 31.98 m²	1410.20 ft² = 131.01 m²

TB-2BR-A-4 (1002-1802)

SUITE AREA	BALCONY AREA	TOTAL AREA
1066.82 ft² = 99.11 m²	153.06 ft² = 14.22 m²	1219.89 ft² = 113.33 m²

TB-2BR-A-3 (2002-3602)

SUITE AREA	BALCONY AREA	TOTAL AREA
1065.21 ft² = 98.96 m²	153.06 ft² = 14.22 m²	1218.27 ft² = 113.18 m²

TB-2BR-A-4 (907)

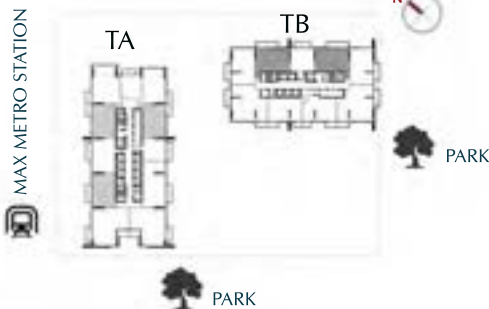
SUITE AREA	BALCONY AREA	TOTAL AREA
1065.32 ft² = 98.97 m²	344.23 ft² = 31.98 m²	1409.55 ft² = 130.95 m²

TB-2BR-A-4 (1009-1809)

SUITE AREA	BALCONY AREA	TOTAL AREA
1066.18 ft² = 99.05 m²	146.82 ft² = 13.64 m²	1213.00 ft² = 112.69 m²

TB-2BR-A-4 (2009-3609)

SUITE AREA	BALCONY AREA	TOTAL AREA
1063.49 ft² = 98.80 m²	146.82 ft² = 13.64 m²	1210.31 ft² = 112.44 m²



"All room dimensions are in metric and measured to structural elements and exclude wall finishes and construction tolerances. All materials, dimensions & drawings features and amenities are approximate at the time of printing, Information subject to change without notice. Actual suite areas may vary from the stated area. Drawings are not to scale E&EO. The developer reserves the right to make revisions."





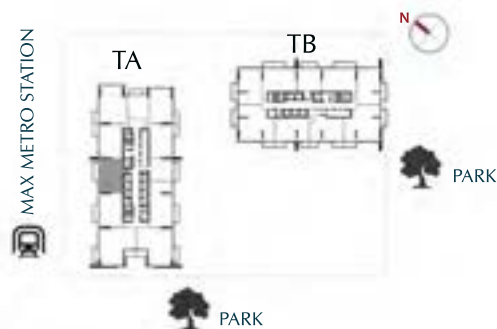
LEVELS : (9<sup>TH</sup>-20<sup>TH</sup>)

2BR-A1: (903)

SUITE AREA	TERRACE AREA	TOTAL AREA
1075.44 ft <sup>2</sup> = 99.91 m <sup>2</sup>	706.12 ft <sup>2</sup> = 65.6 m <sup>2</sup>	1781.56 ft <sup>2</sup> = 165.51 m <sup>2</sup>

2BR-A1: (1005-2005)

SUITE AREA	BALCONY AREA	TOTAL AREA
1076.40 ft <sup>2</sup> = 100.00 m <sup>2</sup>	122.39 ft <sup>2</sup> = 11.37 m <sup>2</sup>	1198.79 ft <sup>2</sup> = 111.37 m <sup>2</sup>



"All room dimensions are in metric and measured to structural elements and exclude wall finishes and construction tolerances. All materials, dimensions & drawings features and amenities are approximate at the time of printing, Information subject to change without notice. Actual suite areas may vary from the stated area. Drawings are not to scale E&EO. The developer reserves the right to make revisions."

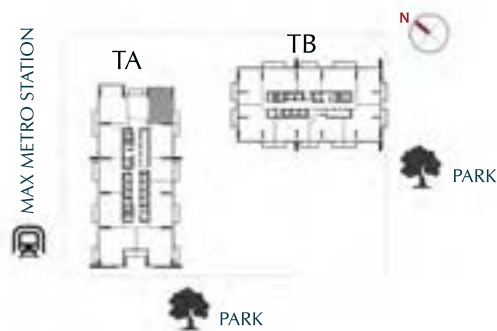




LEVELS : (9<sup>TH</sup>-20<sup>TH</sup>, 22<sup>ND</sup>-40<sup>TH</sup>)

2BR-B: (906, 1008-2008, 2208-4008)

SUITE AREA	BALCONY AREA	TOTAL AREA
1092.12 ft <sup>2</sup> = 101.46 m <sup>2</sup>	84.39 ft <sup>2</sup> = 7.84 m <sup>2</sup>	1176.51 ft <sup>2</sup> = 109.30 m <sup>2</sup>



“All room dimensions are in metric and measured to structural elements and exclude wall finishes and construction tolerances. All materials, dimensions & drawings features and amenities are approximate at the time of printing, Information subject to change without notice. Actual suite areas may vary from the stated area. Drawings are not to scale E&EO. The developer reserves the right to make revisions.”



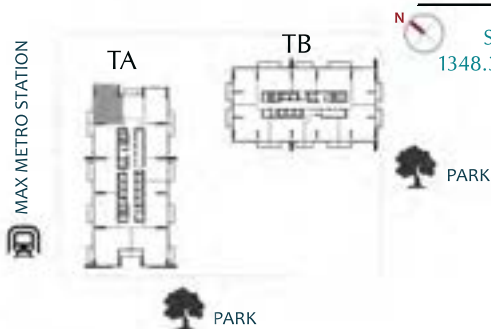
LEVELS : (9<sup>TH</sup>-20<sup>TH</sup>, 22<sup>ND</sup>-25<sup>TH</sup>, 29<sup>TH</sup>-34<sup>TH</sup>, 38<sup>TH</sup>-40<sup>TH</sup>)

2B-C: (908)

SUITE AREA	TERRACE AREA	TOTAL AREA
1348.30 ft <sup>2</sup> = 125.26 m <sup>2</sup>	610.43 ft <sup>2</sup> = 56.71 m <sup>2</sup>	1958.73 ft <sup>2</sup> = 181.97 m <sup>2</sup>

2B-C: (1010-2010, 2210-2510, 2910-3410, 3810-4010)

SUITE AREA	BALCONY AREA	TOTAL AREA
1348.30 ft <sup>2</sup> = 125.26 m <sup>2</sup>	84.39 ft <sup>2</sup> = 7.84 m <sup>2</sup>	1432.69 ft <sup>2</sup> = 133.10 m <sup>2</sup>



“All room dimensions are in metric and measured to structural elements and exclude wall finishes and construction tolerances. All materials, dimensions & drawings features and amenities are approximate at the time of printing, Information subject to change without notice. Actual suite areas may vary from the stated area. Drawings are not to scale E&EO. The developer reserves the right to make revisions.”



LEVELS: (9<sup>TH</sup>-18<sup>TH</sup> , 20<sup>TH</sup>-36<sup>TH</sup>)

2BR-D : ( 906)

SUITE AREA	TERRACE AREA	TOTAL AREA
1107.30 ft <sup>2</sup> = 102.87 m <sup>2</sup>	357.85 ft <sup>2</sup> = 33.22 m <sup>2</sup>	1464.88 ft <sup>2</sup> = 136.09 m <sup>2</sup>

2BR-D : (1008- 1808)

SUITE AREA	BALCONY AREA	TOTAL AREA
1108.27 ft <sup>2</sup> = 102.96 m <sup>2</sup>	121.53 ft <sup>2</sup> = 11.29 m <sup>2</sup>	1229.79 ft <sup>2</sup> = 114.25 m <sup>2</sup>

2BR- D : (2008- 3608)

SUITE AREA	BALCONY AREA	TOTAL AREA
1111.06 ft <sup>2</sup> = 103.22 m <sup>2</sup>	121.53 ft <sup>2</sup> = 11.29 m <sup>2</sup>	1232.59 ft <sup>2</sup> = 114.51 m <sup>2</sup>

2BR-D : (903)

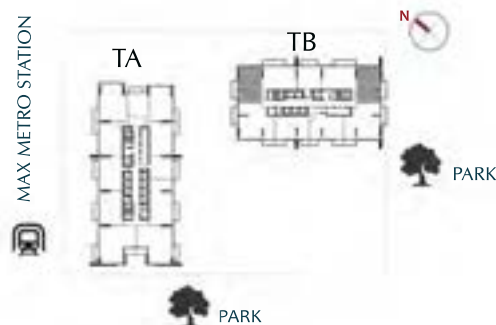
SUITE AREA	TERRACE AREA	TOTAL AREA
1098.90 ft <sup>2</sup> = 102.09 m <sup>2</sup>	343.05 ft <sup>2</sup> = 31.87 m <sup>2</sup>	1441.95 ft <sup>2</sup> = 133.96 m <sup>2</sup>

2BR-D : (1003-1803)

SUITE AREA	BALCONY AREA	TOTAL AREA
1101.27 ft <sup>2</sup> = 102.31 m <sup>2</sup>	121.53 ft <sup>2</sup> = 11.29 m <sup>2</sup>	1222.80 ft <sup>2</sup> = 113.60 m <sup>2</sup>

2BR-D : (2003-3603)

SUITE AREA	BALCONY AREA	TOTAL AREA
1104.07 ft <sup>2</sup> = 102.57 m <sup>2</sup>	121.53 ft <sup>2</sup> = 11.29 m <sup>2</sup>	1225.59 ft <sup>2</sup> = 113.86 m <sup>2</sup>



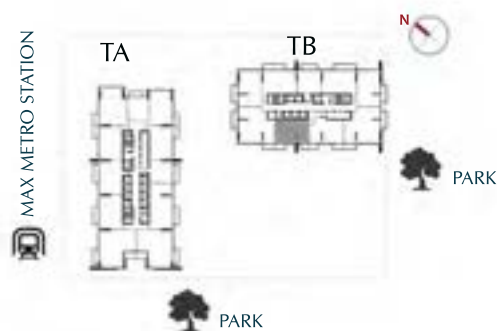
"All room dimensions are in metric and measured to structural elements and exclude wall finishes and construction tolerances. All materials, dimensions & drawings features and amenities are approximate at the time of printing, Information subject to change without notice. Actual suite areas may vary from the stated area. Drawings are not to scale E&EO. The developer reserves the right to make revisions."



LEVELS: (10<sup>TH</sup>-17<sup>TH</sup> , 20<sup>TH</sup>-36<sup>TH</sup>)

2BR-E : (1006-1706, 2006-3606)

SUITE AREA	BALCONY AREA	TOTAL AREA
1026.89 ft <sup>2</sup> = 95.4 m <sup>2</sup>	122.39 ft <sup>2</sup> = 11.37 m <sup>2</sup>	1149.28 ft <sup>2</sup> = 106.77 m <sup>2</sup>



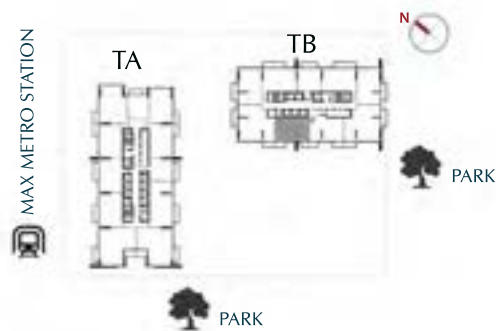
“All room dimensions are in metric and measured to structural elements and exclude wall finishes and construction tolerances. All materials, dimensions & drawings features and amenities are approximate at the time of printing, Information subject to change without notice. Actual suite areas may vary from the stated area. Drawings are not to scale E&EO. The developer reserves the right to make revisions.”



LEVELS: (9<sup>TH</sup>)

2BR-E1 : (904)

SUITE AREA	BALCONY AREA	TOTAL AREA
1064.03 ft <sup>2</sup> = 98.95 m <sup>2</sup>	122.39 ft <sup>2</sup> = 11.37 m <sup>2</sup>	1186.41 ft <sup>2</sup> = 110.22 m <sup>2</sup>



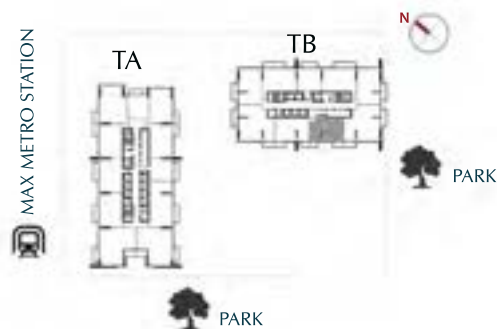
“All room dimensions are in metric and measured to structural elements and exclude wall finishes and construction tolerances. All materials, dimensions & drawings features and amenities are approximate at the time of printing, Information subject to change without notice. Actual suite areas may vary from the stated area. Drawings are not to scale E&EO. The developer reserves the right to make revisions.”



LEVELS: (10<sup>TH</sup>-17<sup>TH</sup> , 20<sup>TH</sup>-36<sup>TH</sup>)

2BR-F : (1005-1705, 2005-3605)

SUITE AREA	BALCONY AREA	TOTAL AREA
1040.45 ft <sup>2</sup> = 96.66 m <sup>2</sup>	129.38 ft <sup>2</sup> = 12.02 m <sup>2</sup>	1169.84 ft <sup>2</sup> = 108.68 m <sup>2</sup>



“All room dimensions are in metric and measured to structural elements and exclude wall finishes and construction tolerances. All materials, dimensions & drawings features and amenities are approximate at the time of printing, Information subject to change without notice. Actual suite areas may vary from the stated area. Drawings are not to scale E&EO. The developer reserves the right to make revisions.”





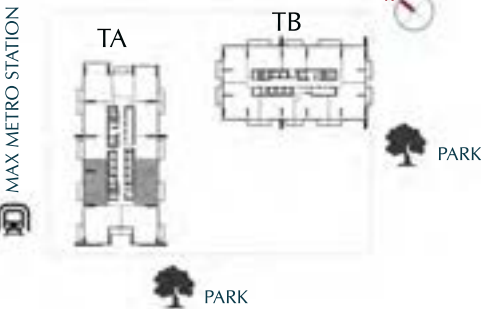
LEVELS: (9<sup>TH</sup>-20<sup>TH</sup> , 22<sup>ND</sup>-42<sup>ND</sup>)

3BR-A - (901)

SUITE AREA	TERRACE AREA	TOTAL AREA
1409.55 ft <sup>2</sup> = 130.95 m <sup>2</sup>	414.20 ft <sup>2</sup> = 38.48 m <sup>2</sup>	1823.75 ft <sup>2</sup> = 169.43 m <sup>2</sup>

3BR-A - (1001-2001, 2201-4201,1004-2004, 2204-4204)

SUITE AREA	BALCONY AREA	TOTAL AREA
1406.96 ft <sup>2</sup> = 130.71 m <sup>2</sup>	122.49 ft <sup>2</sup> = 11.38 m <sup>2</sup>	1529.29 ft <sup>2</sup> = 142.09 m <sup>2</sup>



"All room dimensions are in metric and measured to structural elements and exclude wall finishes and construction tolerances. All materials, dimensions & drawings features and amenities are approximate at the time of printing, Information subject to change without notice. Actual suite areas may vary from the stated area. Drawings are not to scale E&EO. The developer reserves the right to make revisions."





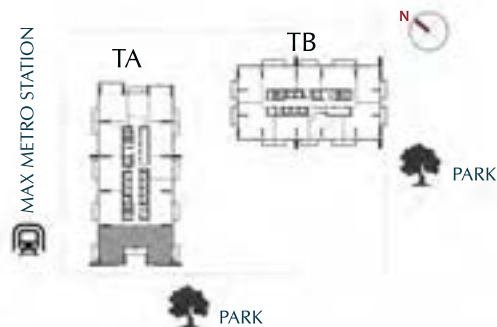
LEVELS: (10<sup>TH</sup>-20<sup>TH</sup> , 22<sup>ND</sup>-42<sup>ND</sup>)

3BR-B- (1002-2002,2202-4202, 2203-4203)

SUITE AREA	BALCONY AREA	TOTAL AREA
1548.19 ft <sup>2</sup> = 143.83 m <sup>2</sup>	198.81 ft <sup>2</sup> = 18.47 m <sup>2</sup>	1747.00 ft <sup>2</sup> = 162.30 m <sup>2</sup>

3BR-B- (1003-2003)

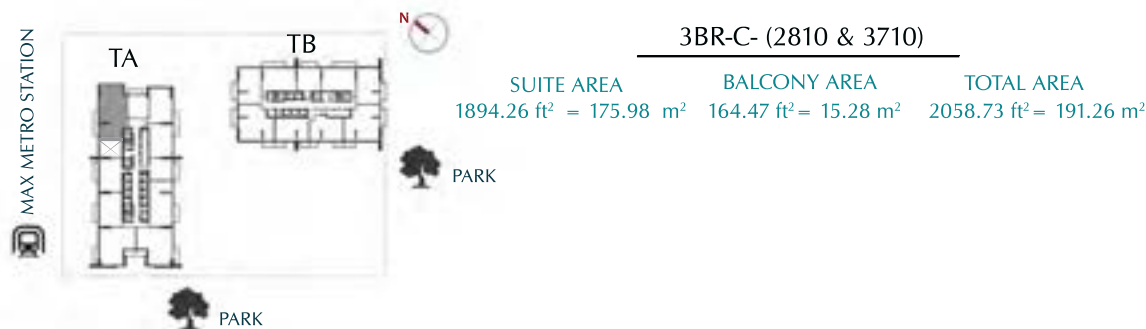
SUITE AREA	BALCONY AREA	TOTAL AREA
1549.27 ft <sup>2</sup> = 143.93 m <sup>2</sup>	198.81 ft <sup>2</sup> = 18.47 m <sup>2</sup>	1748.08 ft <sup>2</sup> = 162.40 m <sup>2</sup>



"All room dimensions are in metric and measured to structural elements and exclude wall finishes and construction tolerances. All materials, dimensions & drawings features and amenities are approximate at the time of printing, Information subject to change without notice. Actual suite areas may vary from the stated area. Drawings are not to scale E&EO. The developer reserves the right to make revisions."



LEVELS: (28<sup>TH</sup> & 37<sup>TH</sup>)



"All room dimensions are in metric and measured to structural elements and exclude wall finishes and construction tolerances. All materials, dimensions & drawings features and amenities are approximate at the time of printing, Information subject to change without notice. Actual suite areas may vary from the stated area. Drawings are not to scale E&EO. The developer reserves the right to make revisions."



LEVELS: (9<sup>TH</sup>-18<sup>TH</sup>, 20<sup>TH</sup>-36<sup>TH</sup>)

3BR-D- (1004-1804, 2004-3604)

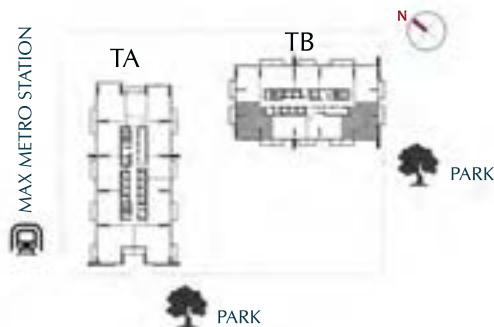
SUITE AREA	BALCONY AREA	TOTAL AREA
1544.96 ft <sup>2</sup> = 143.53 m <sup>2</sup>	202.26 ft <sup>2</sup> = 18.79 m <sup>2</sup>	1747.22 ft <sup>2</sup> = 162.32 m <sup>2</sup>

3BR-D- (905, 1007-1807)

SUITE AREA	BALCONY AREA	TOTAL AREA
1552.07 ft <sup>2</sup> = 144.19 m <sup>2</sup>	201.61 ft <sup>2</sup> = 18.73 m <sup>2</sup>	1753.68 ft <sup>2</sup> = 162.92 m <sup>2</sup>

3BR-D- (2007-3607)

SUITE AREA	BALCONY AREA	TOTAL AREA
1552.07 ft <sup>2</sup> = 144.19 m <sup>2</sup>	201.61 ft <sup>2</sup> = 18.73 m <sup>2</sup>	1753.68 ft <sup>2</sup> = 162.92 m <sup>2</sup>



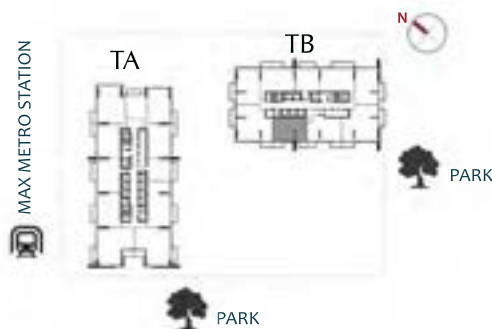
"All room dimensions are in metric and measured to structural elements and exclude wall finishes and construction tolerances. All materials, dimensions & drawings features and amenities are approximate at the time of printing, Information subject to change without notice. Actual suite areas may vary from the stated area. Drawings are not to scale E&EO. The developer reserves the right to make revisions."



LEVELS: (18<sup>TH</sup>)

3BR-DX-A: (1806)- LOWER

SUITE AREA	BALCONY AREA	TOTAL AREA
1027.64 ft <sup>2</sup> = 95.47 m <sup>2</sup>	122.39 ft <sup>2</sup> = 11.37 m <sup>2</sup>	1150.03 ft <sup>2</sup> = 106.84 m <sup>2</sup>

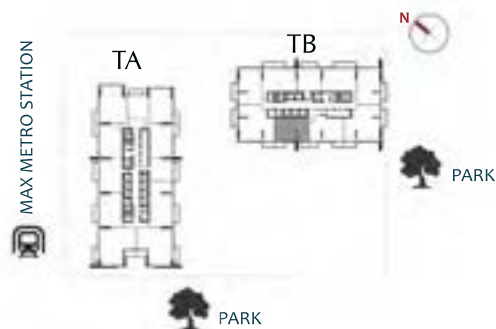




LEVELS: (19<sup>TH</sup>)

3BR-DX-A: (1806)- UPPER

SUITE AREA	BALCONY AREA	TOTAL AREA
1302.45 ft <sup>2</sup> = 121.00 m <sup>2</sup>	196.66 ft <sup>2</sup> = 18.27 m <sup>2</sup>	1499.11 ft <sup>2</sup> = 139.27 m <sup>2</sup>



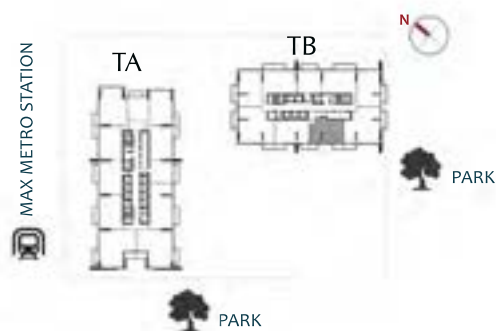




LEVELS: (18<sup>TH</sup>)

3BR-DX-B: (1805)- LOWER

SUITE AREA	BALCONY AREA	TOTAL AREA
998.47 ft <sup>2</sup> = 92.76 m <sup>2</sup>	129.38 ft <sup>2</sup> = 12.02 m <sup>2</sup>	1127.86 ft <sup>2</sup> = 104.78 m <sup>2</sup>

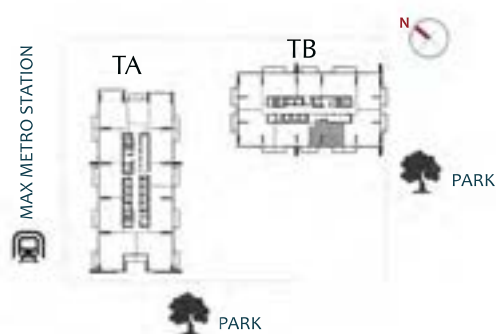




LEVELS: (19<sup>TH</sup>)

3BR-DX-B: (1805)- UPPER

SUITE AREA	BALCONY AREA	TOTAL AREA
1315.37 ft <sup>2</sup> = 122.20 m <sup>2</sup>	203.33 ft <sup>2</sup> = 18.89 m <sup>2</sup>	1518.70 ft <sup>2</sup> = 141.09 m <sup>2</sup>







MAX METRO STATION

TA

TB



PARK

PARK

4BR-DX-A: (2610, 3510)

LEVELS: (26<sup>TH</sup> & 35<sup>TH</sup>)



LEVELS: (27<sup>TH</sup> & 36<sup>TH</sup>)

4BR-DX-A: (2610, 3510)- LOWER

