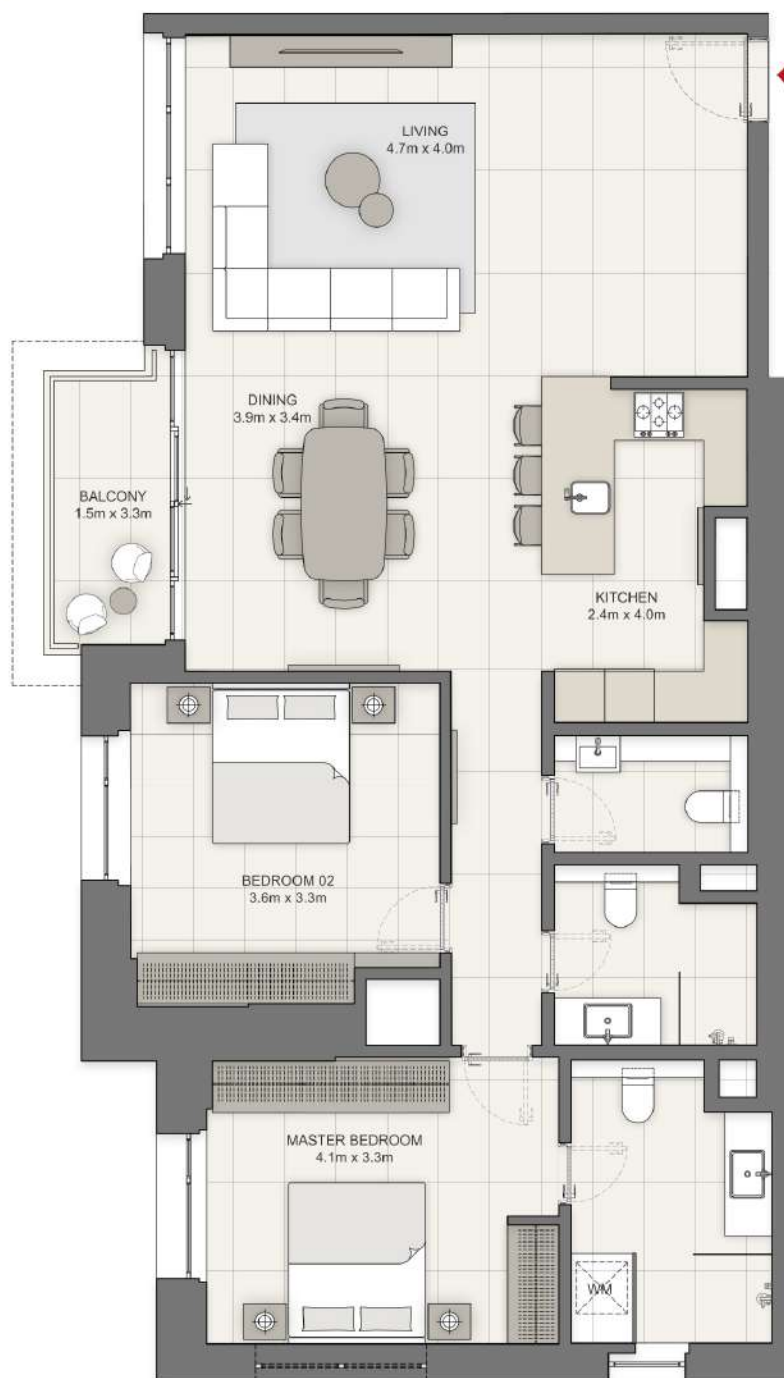


Level 02
Unit 201

2 BR-A Apartment



LIV
WATERSIDE
DUBAI MARINA

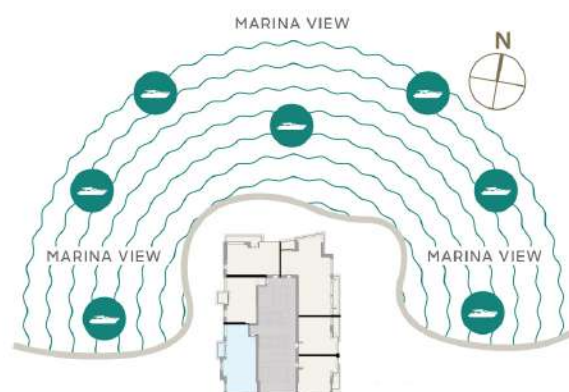


SAMPLE VIEWS



Apartment Area	110.14 sqm	1,186 sqft
Balcony Area	4.68 sqm	50 sqft
Total Area	114.82 sqm	1,236 sqft

Drawings are provided by our consultants. All dimensions, features and amenities are approximate at the time of printing. Actual area may vary from stated area. Drawings not to scale E & OE. The Developer reserves the right to make revisions to the floor plans and any features, materials and dimensions mentioned without further notice. Sample views are indicative and may differ or be subject to change.



Level 02
Unit 202

1 BR-A Apartment



LIV
WATERSIDE
DUBAI MARINA

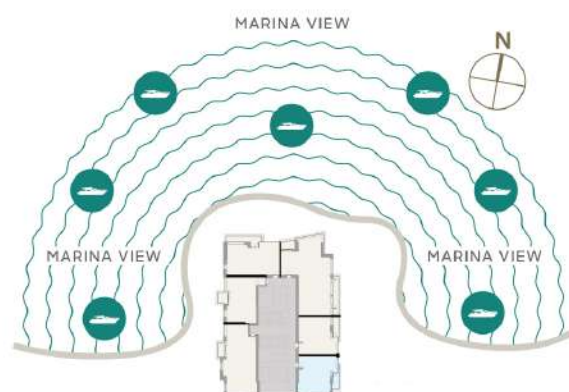


SAMPLE VIEWS



Apartment Area	68.54 sqm	738 sqft
Balcony Area	6.02 sqm	65 sqft
Total Area	74.56 sqm	803 sqft

Drawings are provided by our consultants. All dimensions, features and amenities are approximate at the time of printing. Actual area may vary from stated area. Drawings not to scale E & OE. The Developer reserves the right to make revisions to the floor plans and any features, materials and dimensions mentioned without further notice. Sample views are indicative and may differ or be subject to change.



Level 02
Unit 203

1 BR-B Apartment



LIV
WATERSIDE
DUBAI MARINA

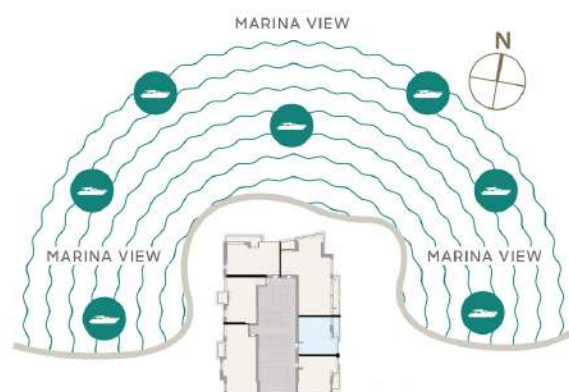


SAMPLE VIEWS



Apartment Area	68.19 sqm	734 sqft
Balcony Area	7.12 sqm	77 sqft
Total Area	75.31 sqm	811 sqft

Drawings are provided by our consultants. All dimensions, features and amenities are approximate at the time of printing. Actual area may vary from stated area. Drawings not to scale E & OE. The Developer reserves the right to make revisions to the floor plans and any features, materials and dimensions mentioned without further notice. Sample views are indicative and may differ or be subject to change.

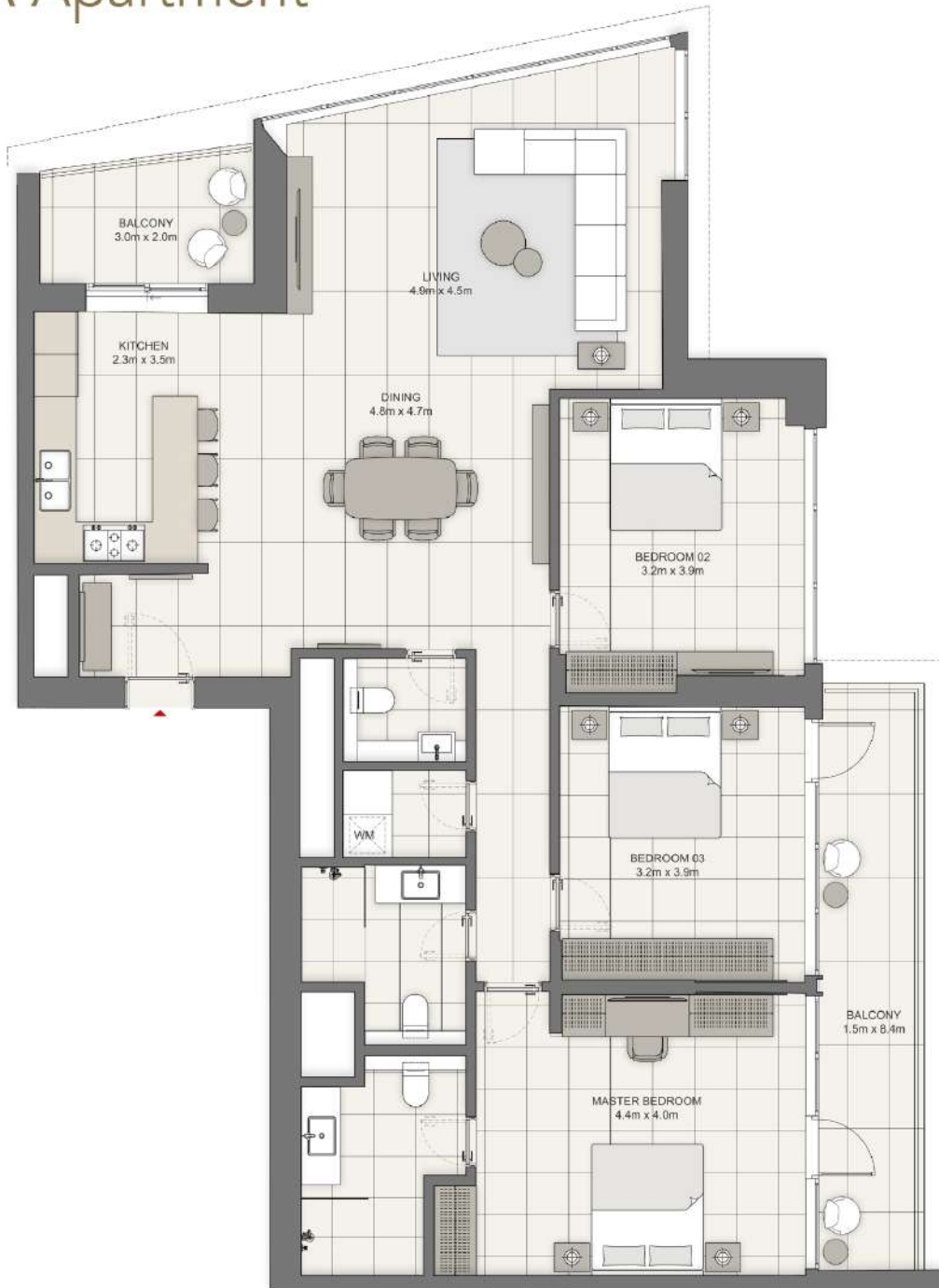


Level 02
Unit 204

3 BR-A Apartment



LIV
WATERSIDE
DUBAI MARINA

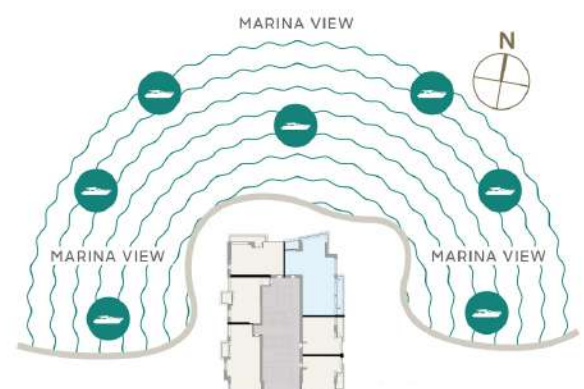


SAMPLE VIEWS



Apartment Area	139.9 sqm	1,506 sqft
Balcony Area	18.94 sqm	204 sqft
Total Area	158.84 sqm	1,710 sqft

Drawings are provided by our consultants. All dimensions, features and amenities are approximate at the time of printing. Actual area may vary from stated area. Drawings not to scale E & OE. The Developer reserves the right to make revisions to the floor plans and any features, materials and dimensions mentioned without further notice. Sample views are indicative and may differ or be subject to change.

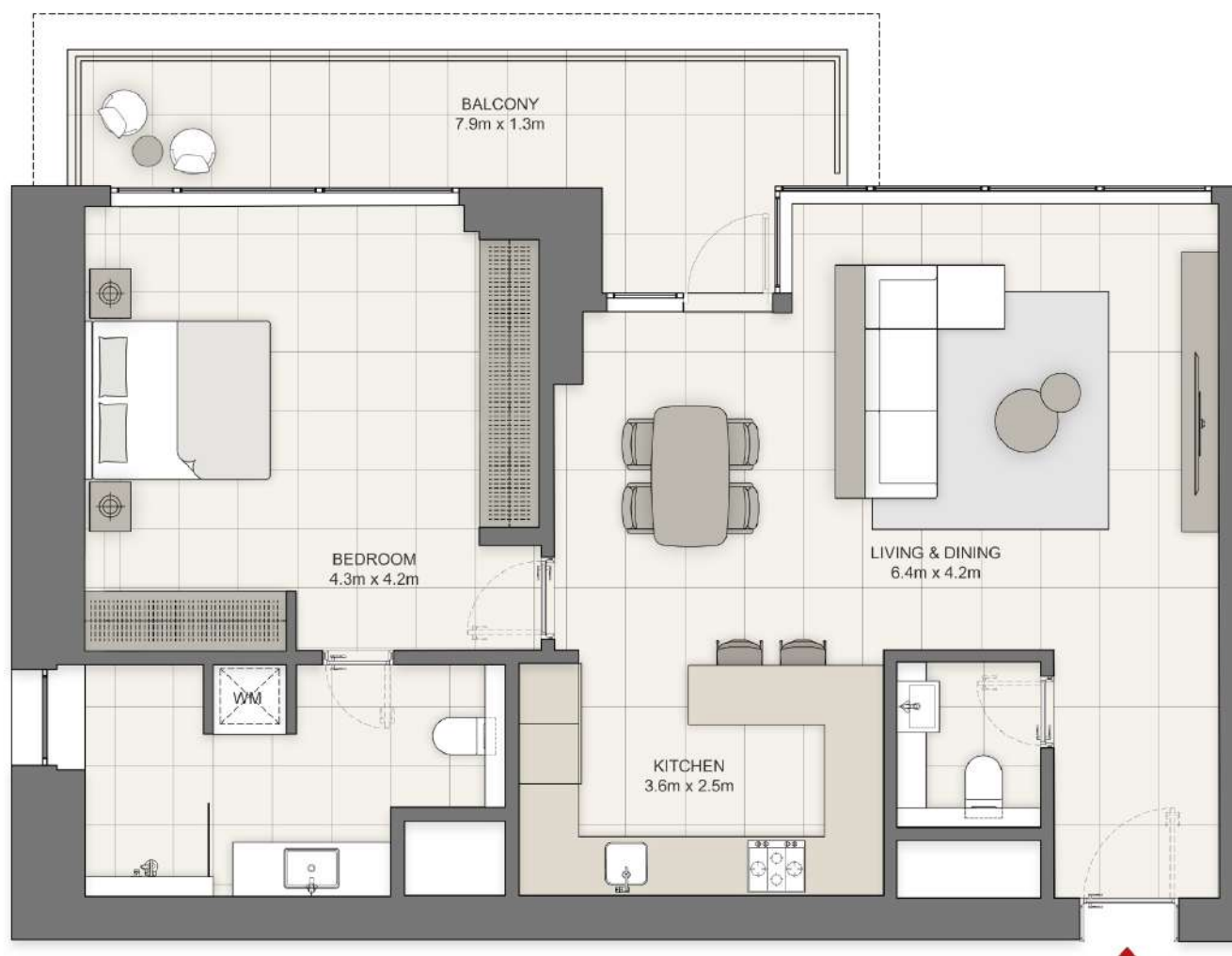


Level 02
Unit 205

1 BR-C Apartment



LIV
WATERSIDE
DUBAI MARINA

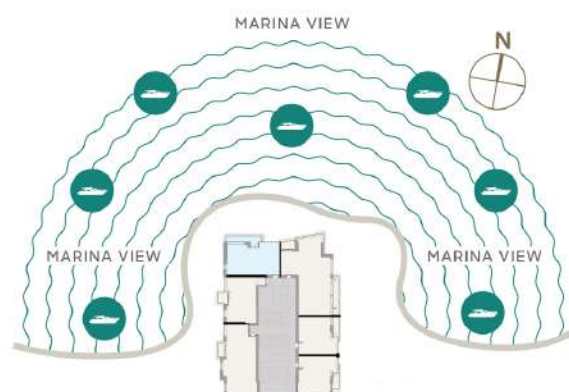


SAMPLE VIEWS



Apartment Area	81.97 sqm	882 sqft
Balcony Area	12.78 sqm	138 sqft
Total Area	94.75 sqm	1,020 sqft

Drawings are provided by our consultants. All dimensions, features and amenities are approximate at the time of printing. Actual area may vary from stated area. Drawings not to scale E & OE. The Developer reserves the right to make revisions to the floor plans and any features, materials and dimensions mentioned without further notice. Sample views are indicative and may differ or be subject to change.



Level 02
Unit 206

1 BR-D Apartment



LIV
WATERSIDE
DUBAI MARINA

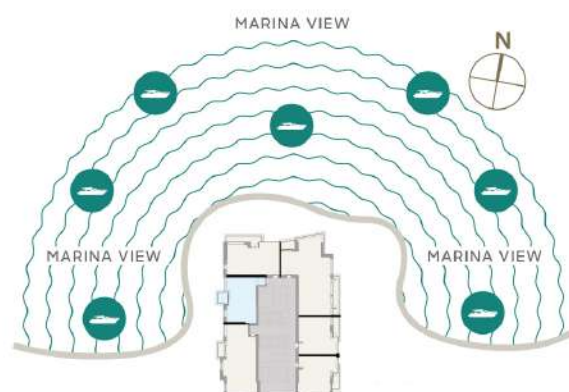


SAMPLE VIEWS



Apartment Area	71.48 sqm	769 sqft
Balcony Area	5.53 sqm	60 sqft
Total Area	77.01 sqm	829 sqft

Drawings are provided by our consultants. All dimensions, features and amenities are approximate at the time of printing. Actual area may vary from stated area. Drawings not to scale E & OE. The Developer reserves the right to make revisions to the floor plans and any features, materials and dimensions mentioned without further notice. Sample views are indicative and may differ or be subject to change.



Level 03-11

Unit 02

1 BR-A Apartment



LIV
WATERSIDE
DUBAI MARINA

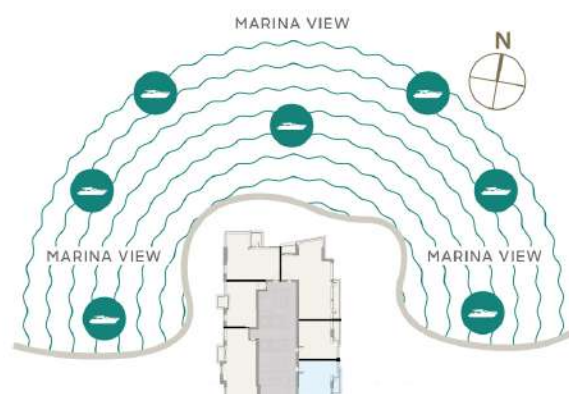


SAMPLE VIEWS



Apartment Area	68.76 sqm	740 sqft
Balcony Area	6.27 sqm	68 sqft
Total Area	75.03 sqm	808 sqft

Drawings are provided by our consultants. All dimensions, features and amenities are approximate at the time of printing. Actual area may vary from stated area. Drawings not to scale E & OE. The Developer reserves the right to make revisions to the floor plans and any features, materials and dimensions mentioned without further notice. Sample views are indicative and may differ or be subject to change.



Level 03-11
Unit 03

1 BR-B Apartment



LIV
WATERSIDE
DUBAI MARINA

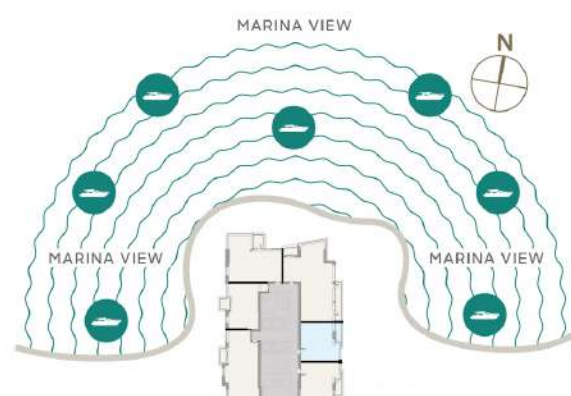


SAMPLE VIEWS



Apartment Area	68.16 sqm	734 sqft
Balcony Area	7.54 sqm	81 sqft
Total Area	75.70 sqm	815 sqft

Drawings are provided by our consultants. All dimensions, features and amenities are approximate at the time of printing. Actual area may vary from stated area. Drawings not to scale E & OE. The Developer reserves the right to make revisions to the floor plans and any features, materials and dimensions mentioned without further notice. Sample views are indicative and may differ or be subject to change.



Level 03-11

Unit 04

3 BR-A Apartment



LIV
WATERSIDE
DUBAI MARINA

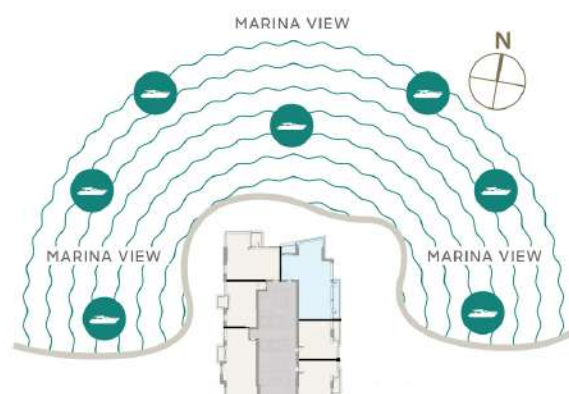


SAMPLE VIEWS



Apartment Area	139.43 sqm	1,501 sqft
Balcony Area	21.63 sqm	233 sqft
Total Area	161.06 sqm	1,734 sqft

Drawings are provided by our consultants. All dimensions, features and amenities are approximate at the time of printing. Actual area may vary from stated area. Drawings not to scale E & OE. The Developer reserves the right to make revisions to the floor plans and any features, materials and dimensions mentioned without further notice. Sample views are indicative and may differ or be subject to change.



Level 03-11

Unit 05

2 BR-B Apartment



LIV
WATERSIDE
DUBAI MARINA

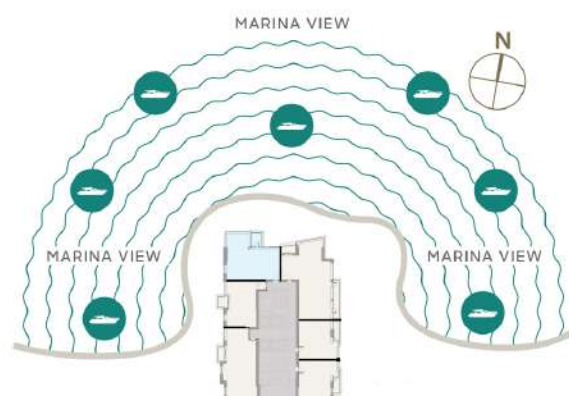


SAMPLE VIEWS



Apartment Area	102.88 sqm	1,107 sqft
Balcony Area	6.70 sqm	73 sqft
Total Area	109.58 sqm	1,180 sqft

Drawings are provided by our consultants. All dimensions, features and amenities are approximate at the time of printing. Actual area may vary from stated area. Drawings not to scale E & OE. The Developer reserves the right to make revisions to the floor plans and any features, materials and dimensions mentioned without further notice. Sample views are indicative and may differ or be subject to change.



Level 03-11
Unit 06

1 BR-D Apartment



LIV
WATERSIDE
DUBAI MARINA

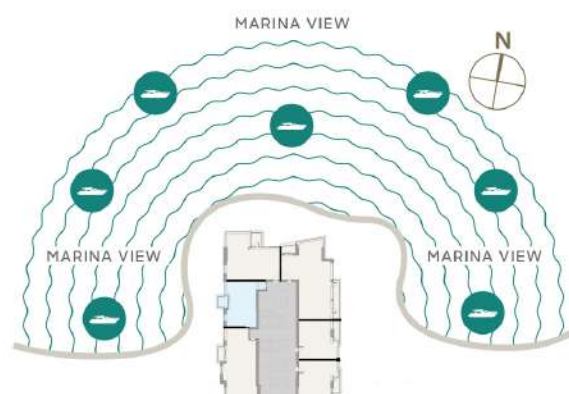


SAMPLE VIEWS



Apartment Area	71.68 sqm	772 sqft
Balcony Area	5.88 sqm	63 sqft
Total Area	77.56 sqm	835 sqft

Drawings are provided by our consultants. All dimensions, features and amenities are approximate at the time of printing. Actual area may vary from stated area. Drawings not to scale E & OE. The Developer reserves the right to make revisions to the floor plans and any features, materials and dimensions mentioned without further notice. Sample views are indicative and may differ or be subject to change.



Level 03-11
Unit 01

2 BR-A Apartment



LIV
WATERSIDE
DUBAI MARINA

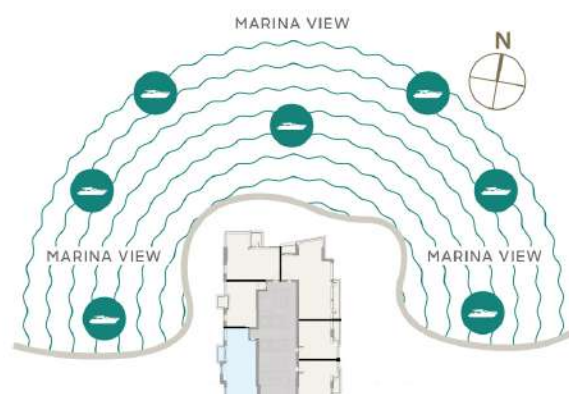


SAMPLE VIEWS



Apartment Area	110.27 sqm	1,187 sqft
Balcony Area	5.18 sqm	56 sqft
Total Area	115.45 sqm	1,243 sqft

Drawings are provided by our consultants. All dimensions, features and amenities are approximate at the time of printing. Actual area may vary from stated area. Drawings not to scale E & OE. The Developer reserves the right to make revisions to the floor plans and any features, materials and dimensions mentioned without further notice. Sample views are indicative and may differ or be subject to change.



Level 12-15
Unit 01

2 BR-A Apartment



LIV
WATERSIDE
DUBAI MARINA

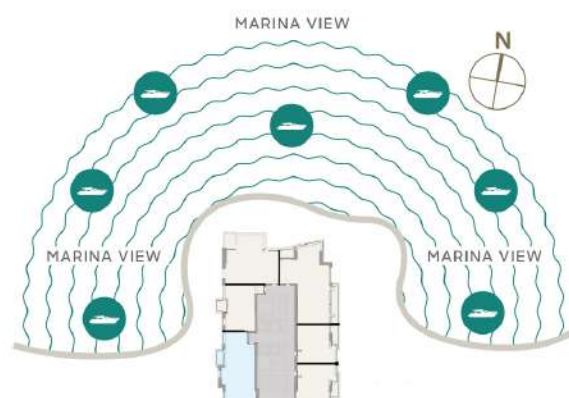


SAMPLE VIEWS



Apartment Area	110.08 sqm	1,185 sqft
Balcony Area	5.22 sqm	56 sqft
Total Area	115.3 sqm	1,241 sqft

Drawings are provided by our consultants. All dimensions, features and amenities are approximate at the time of printing. Actual area may vary from stated area. Drawings not to scale E & OE. The Developer reserves the right to make revisions to the floor plans and any features, materials and dimensions mentioned without further notice. Sample views are indicative and may differ or be subject to change.



Level 12-15

Unit 02

1 BR-A Apartment



LIV
WATERSIDE
DUBAI MARINA

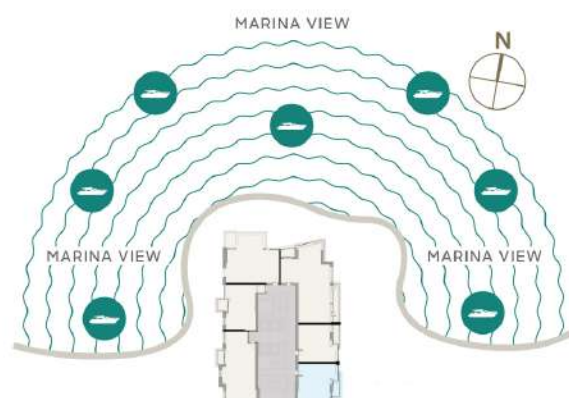


SAMPLE VIEWS



Apartment Area	68.45 sqm	737 sqft
Balcony Area	6.31 sqm	68 sqft
Total Area	74.76 sqm	805 sqft

Drawings are provided by our consultants. All dimensions, features and amenities are approximate at the time of printing. Actual area may vary from stated area. Drawings not to scale E & OE. The Developer reserves the right to make revisions to the floor plans and any features, materials and dimensions mentioned without further notice. Sample views are indicative and may differ or be subject to change.



Level 12-15
Unit 03

1 BR-B Apartment



LIV
WATERSIDE
DUBAI MARINA

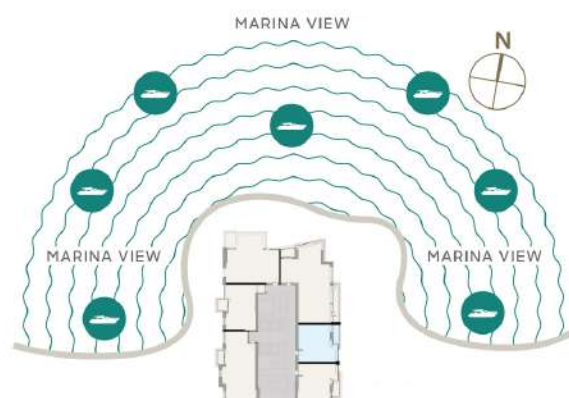


SAMPLE VIEWS



Apartment Area	68.13 sqm	733 sqft
Balcony Area	7.59 sqm	82 sqft
Total Area	75.72 sqm	815 sqft

Drawings are provided by our consultants. All dimensions, features and amenities are approximate at the time of printing. Actual area may vary from stated area. Drawings not to scale E & OE. The Developer reserves the right to make revisions to the floor plans and any features, materials and dimensions mentioned without further notice. Sample views are indicative and may differ or be subject to change.



Level 12-15

Unit 04

3 BR-A Apartment



LIV
WATERSIDE
DUBAI MARINA

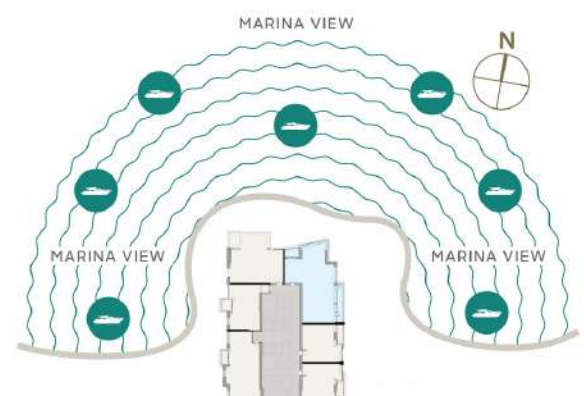


SAMPLE VIEWS



Apartment Area	139.43 sqm	1,501 sqft
Balcony Area	21.63 sqm	233 sqft
Total Area	161.06 sqm	1,734 sqft

Drawings are provided by our consultants. All dimensions, features and amenities are approximate at the time of printing. Actual area may vary from stated area. Drawings not to scale E & OE. The Developer reserves the right to make revisions to the floor plans and any features, materials and dimensions mentioned without further notice. Sample views are indicative and may differ or be subject to change.



Level 12-15

Unit 05

2 BR-C Apartment



LIV
WATERSIDE
DUBAI MARINA

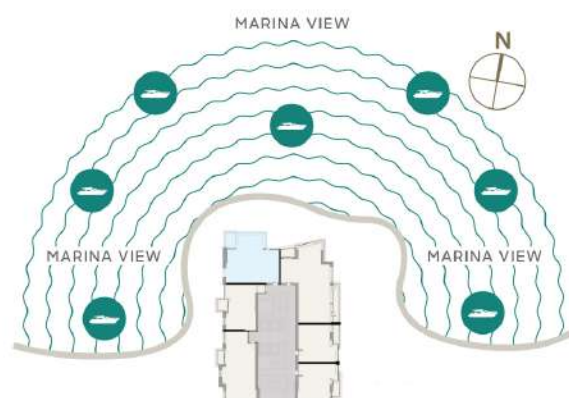


SAMPLE VIEWS



Apartment Area	103.62 sqm	1,115 sqft
Balcony Area	7.13 sqm	77 sqft
Total Area	110.75 sqm	1,192 sqft

Drawings are provided by our consultants. All dimensions, features and amenities are approximate at the time of printing. Actual area may vary from stated area. Drawings not to scale E & OE. The Developer reserves the right to make revisions to the floor plans and any features, materials and dimensions mentioned without further notice. Sample views are indicative and may differ or be subject to change.



Level 12-15
Unit 06

1 BR-D Apartment



LIV
WATERSIDE
DUBAI MARINA

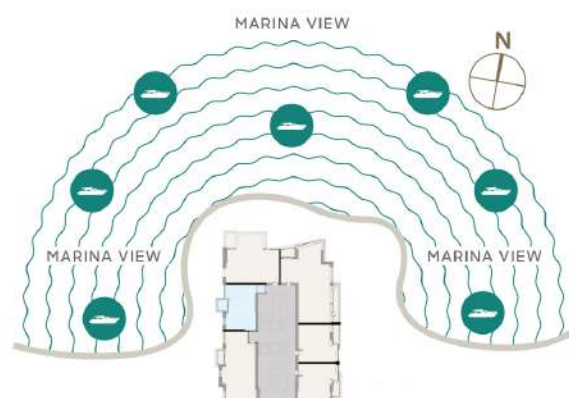


SAMPLE VIEWS



Apartment Area	71.69 sqm	772 sqft
Balcony Area	5.80 sqm	62 sqft
Total Area	77.49 sqm	834 sqft

Drawings are provided by our consultants. All dimensions, features and amenities are approximate at the time of printing. Actual area may vary from stated area. Drawings not to scale E & OE. The Developer reserves the right to make revisions to the floor plans and any features, materials and dimensions mentioned without further notice. Sample views are indicative and may differ or be subject to change.



Level 17
Unit 01

2 BR-D Apartment



LIV
WATERSIDE
DUBAI MARINA

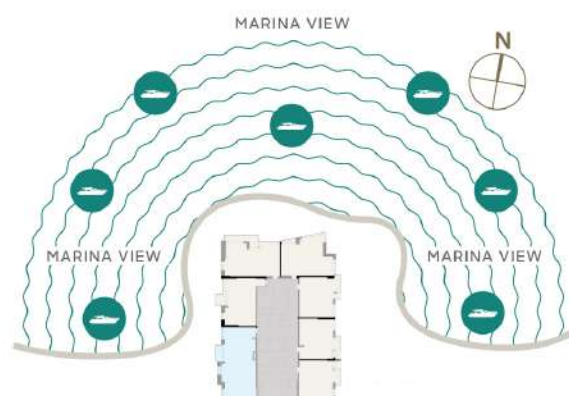


SAMPLE VIEWS



Apartment Area	109.5 sqm	1,179 sqft
Balcony Area	4.65 sqm	50 sqft
Total Area	114.15 sqm	1,229 sqft

Drawings are provided by our consultants. All dimensions, features and amenities are approximate at the time of printing. Actual area may vary from stated area. Drawings not to scale E & OE. The Developer reserves the right to make revisions to the floor plans and any features, materials and dimensions mentioned without further notice. Sample views are indicative and may differ or be subject to change.



Level 17
Unit 02

1 BR-E Apartment



LIV
WATERSIDE
DUBAI MARINA



SAMPLE VIEWS



Apartment Area	68.08 sqm	733 sqft
Balcony Area	3.11 sqm	33 sqft
Total Area	71.19 sqm	766 sqft

Drawings are provided by our consultants. All dimensions, features and amenities are approximate at the time of printing. Actual area may vary from stated area. Drawings not to scale E & OE. The Developer reserves the right to make revisions to the floor plans and any features, materials and dimensions mentioned without further notice. Sample views are indicative and may differ or be subject to change.

