

AJMAN CREEK TOWERS

# TOWER 1

FLOOR 1

FLOOR PLANS



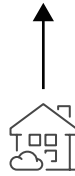




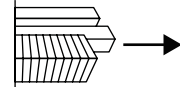
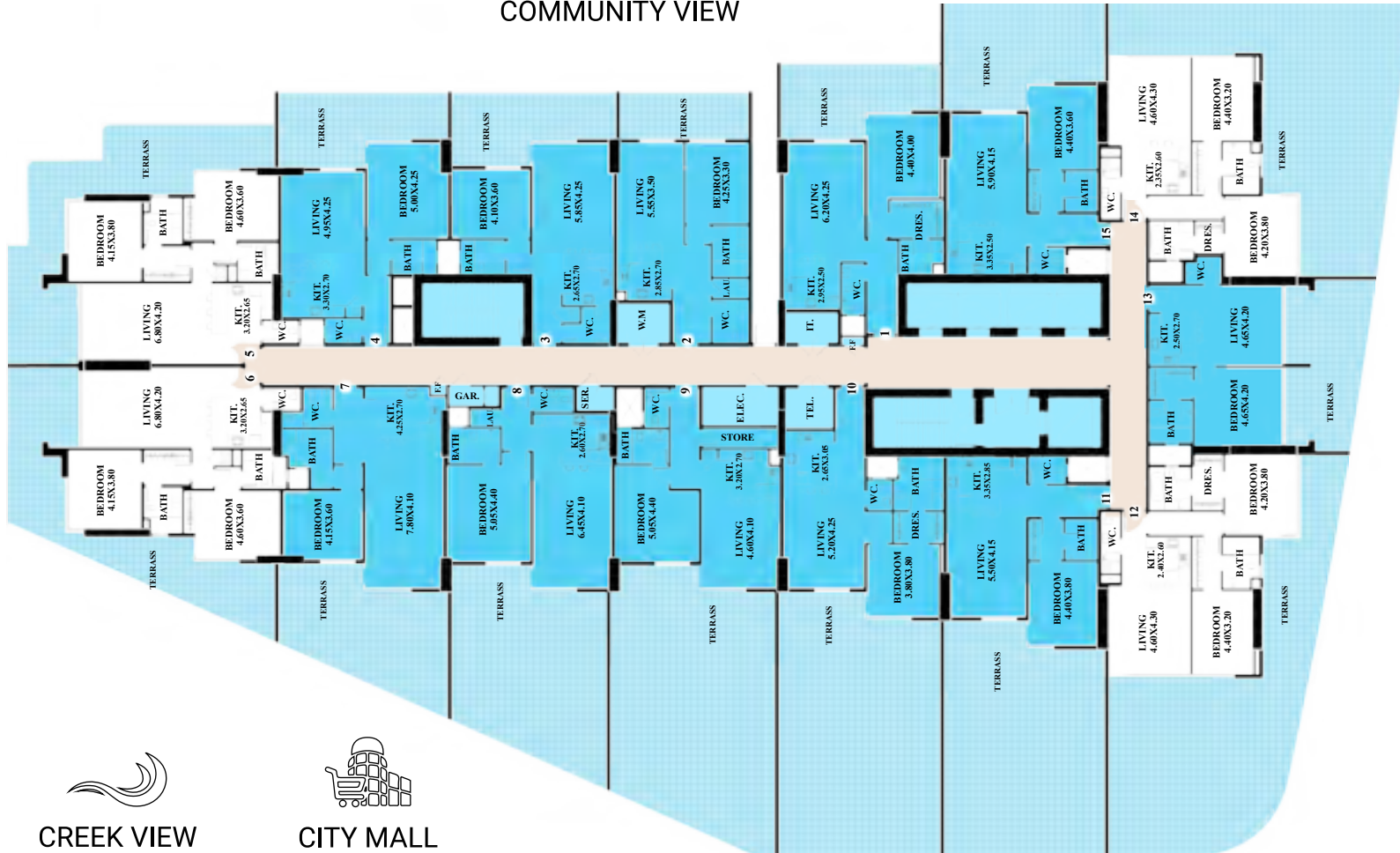




# MASTERPLAN



COMMUNITY VIEW



CITY VIEW



CREEK VIEW



CITY MALL

## Disclaimer:

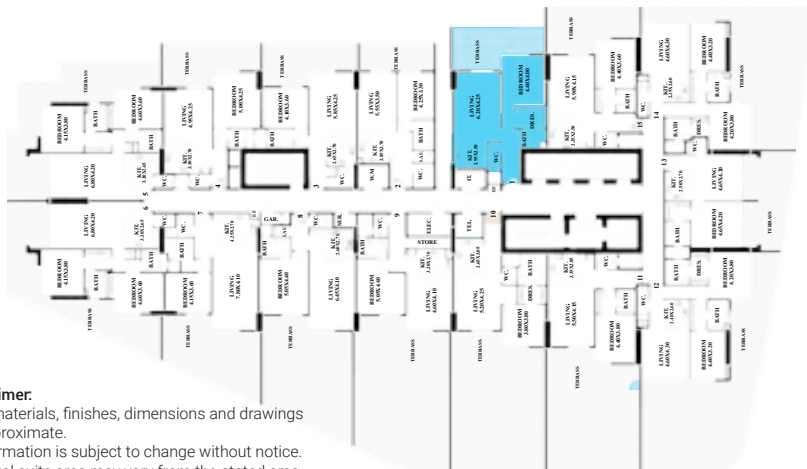
1. All materials, finishes, dimensions and drawings are approximate.
2. Information is subject to change without notice.
3. Actual suite area may vary from the stated area.
4. Drawings are not to scale.
5. The Developer reserves the right to make revisions/alterations without any liability whatsoever.



# AJMAN CREEK TOWERS

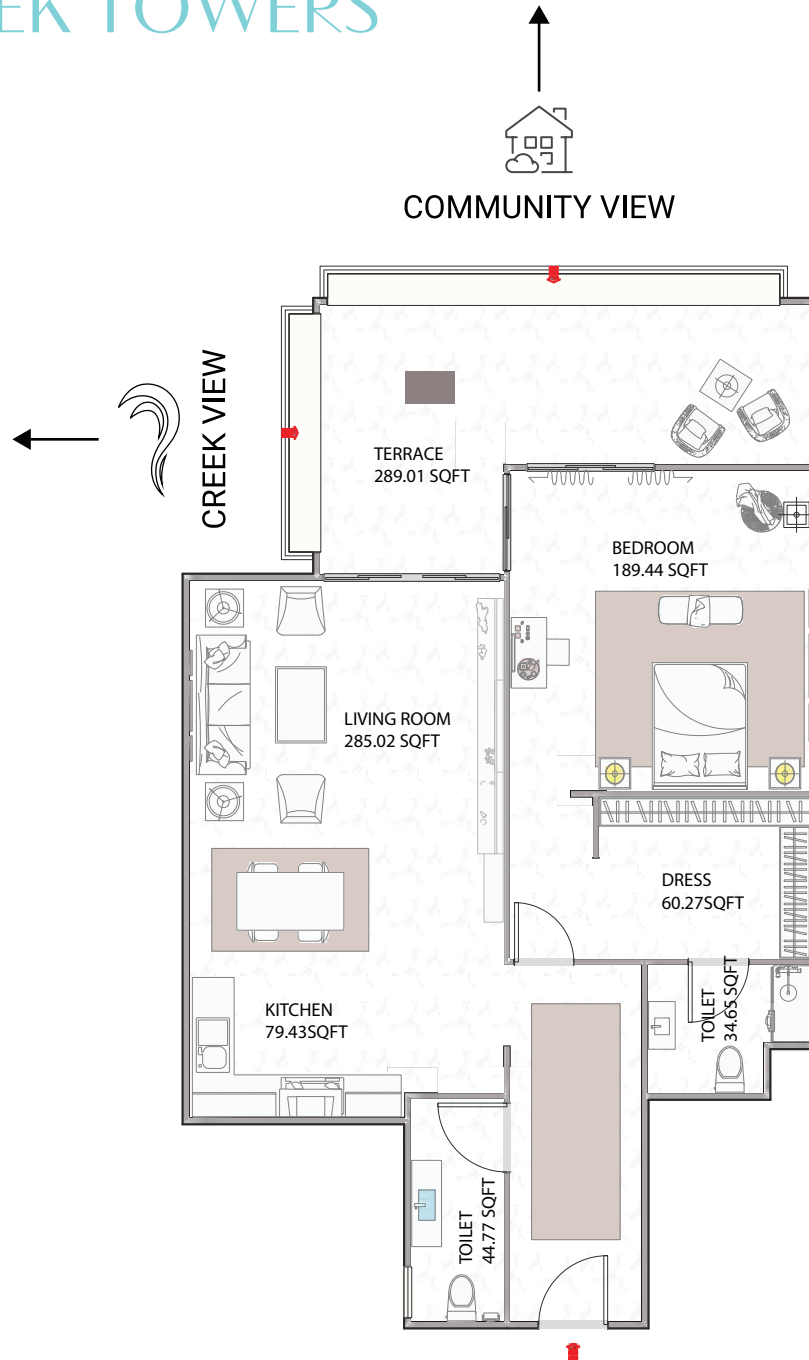
## APARTMENT 1 BEDROOM

UNIT - 01  
TOTAL AREA : 1569.59 SQ.FT



### Disclaimer:

1. All materials, finishes, dimensions and drawings are approximate.
2. Information is subject to change without notice.
3. Actual suite area may vary from the stated area.
4. Drawings are not to scale.
5. The Developer reserves the right to make revisions/alterations without any liability whatsoever.



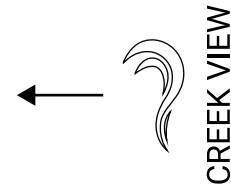


# AJMAN CREEK TOWERS

## APARTMENT 1 BEDROOM

UNIT - 02

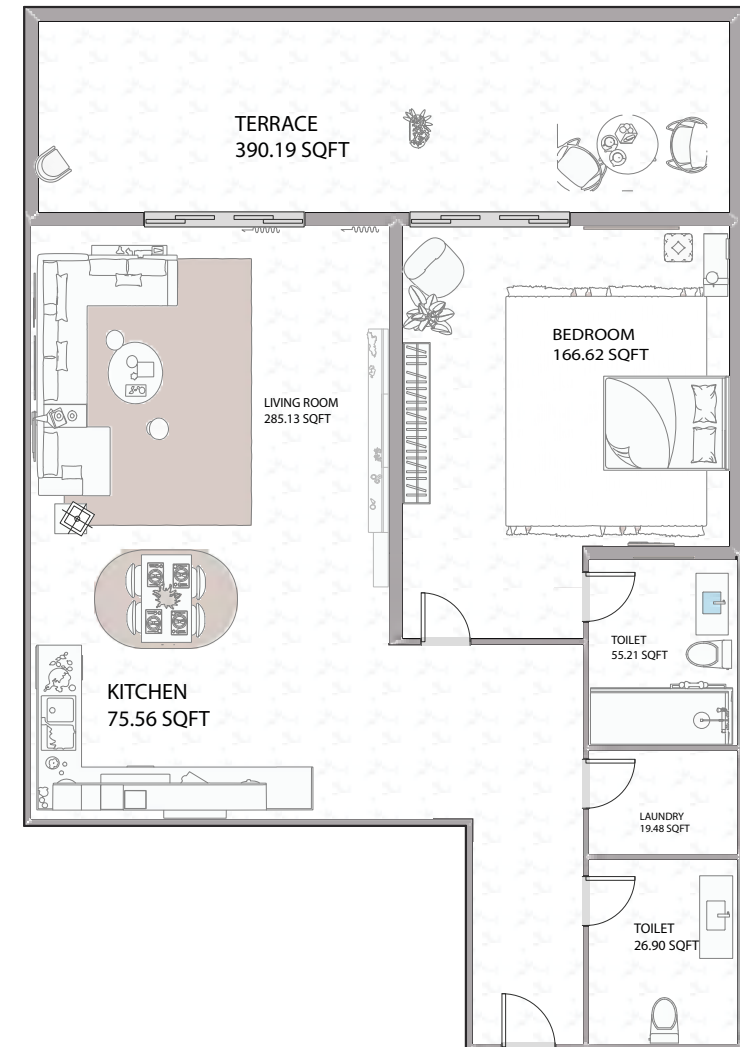
TOTAL AREA : 1271.27 SQ.FT



CREEK VIEW



COMMUNITY VIEW



### Disclaimer:

1. All materials, finishes, dimensions and drawings are approximate.
2. Information is subject to change without notice.
3. Actual suite area may vary from the stated area.
4. Drawings are not to scale.
5. The Developer reserves the right to make revisions/alterations without any liability whatsoever.

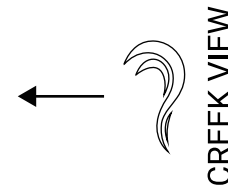


# AJMAN CREEK TOWERS

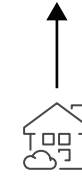
## APARTMENT 1 BEDROOM

UNIT - 03

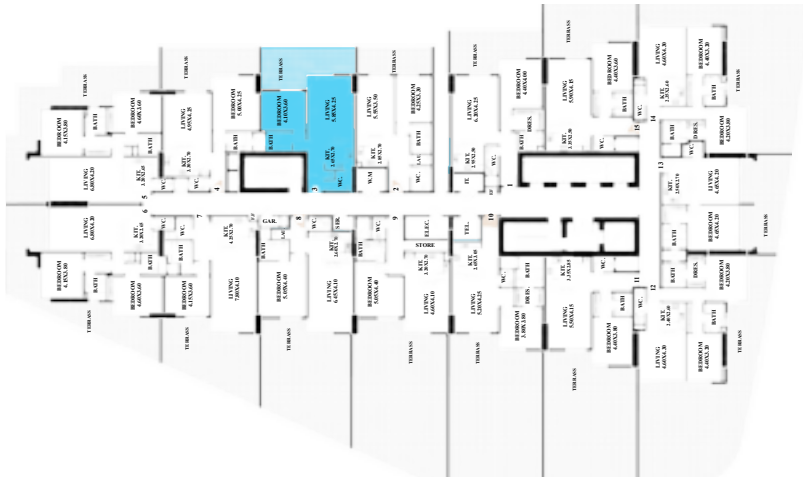
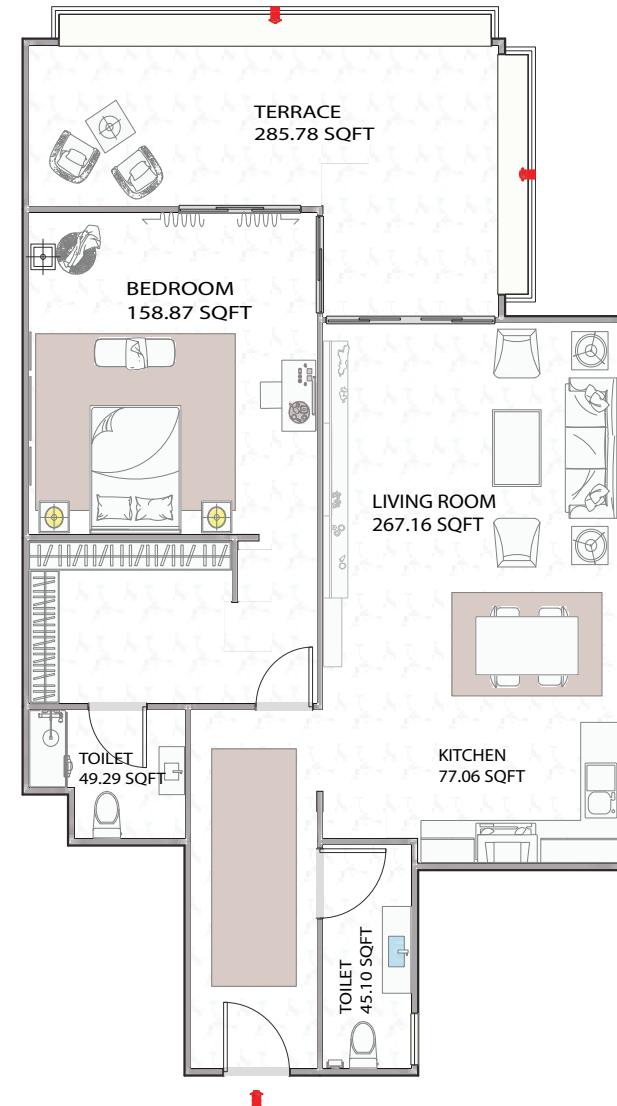
TOTAL AREA : 1408.93 SQ.FT



CREEK VIEW



COMMUNITY VIEW



### Disclaimer:

1. All materials, finishes, dimensions and drawings are approximate.
2. Information is subject to change without notice.
3. Actual suite area may vary from the stated area.
4. Drawings are not to scale.
5. The Developer reserves the right to make revisions/alterations without any liability whatsoever.

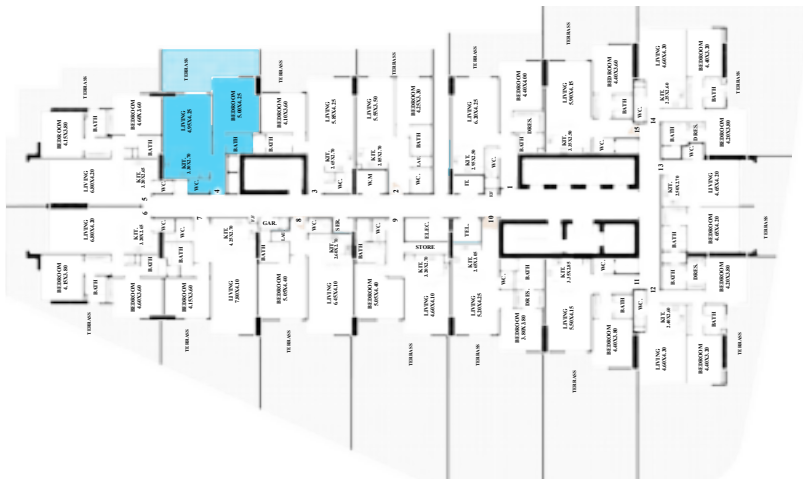


# AJMAN CREEK TOWERS

## APARTMENT 1 BEDROOM

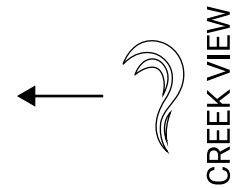
UNIT - 04

TOTAL AREA : 1484.50 SQ.FT

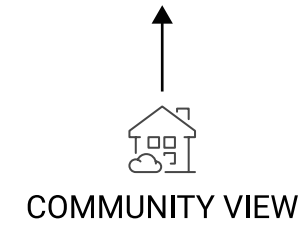


### Disclaimer:

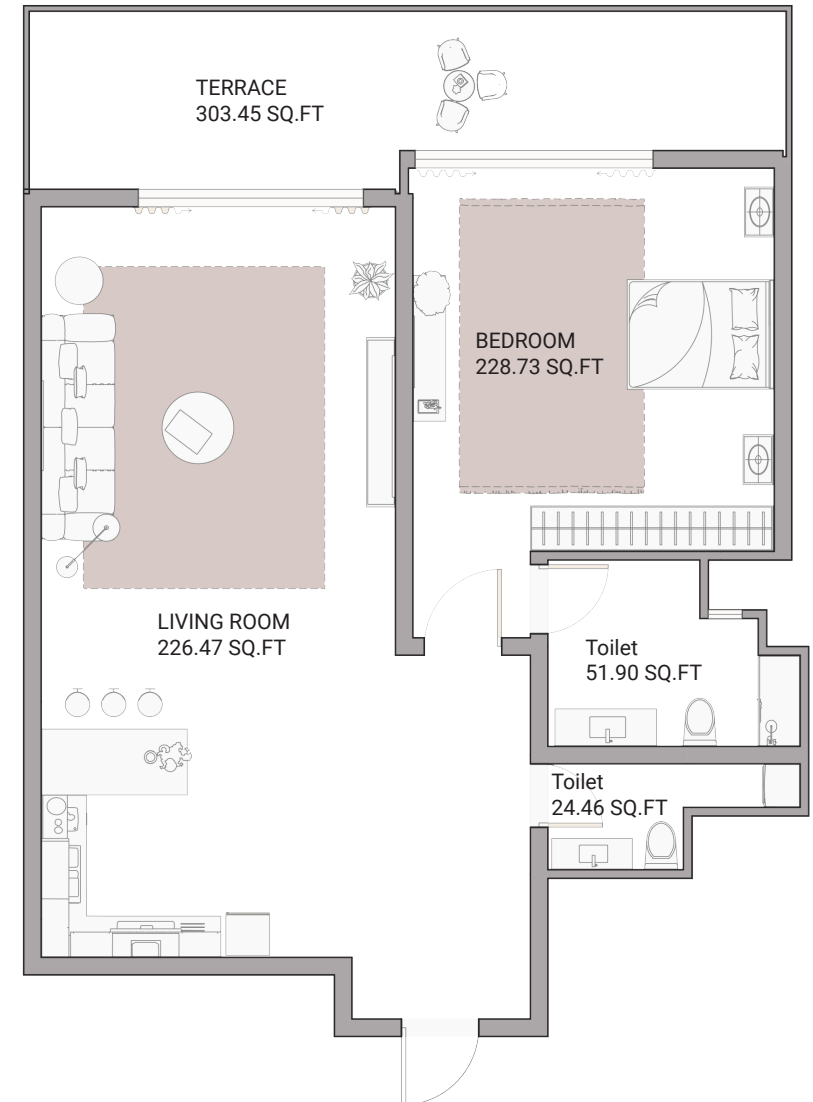
1. All materials, finishes, dimensions and drawings are approximate.
2. Information is subject to change without notice.
3. Actual suite area may vary from the stated area.
4. Drawings are not to scale.
5. The Developer reserves the right to make revisions/alterations without any liability whatsoever.



CREEK VIEW



COMMUNITY VIEW

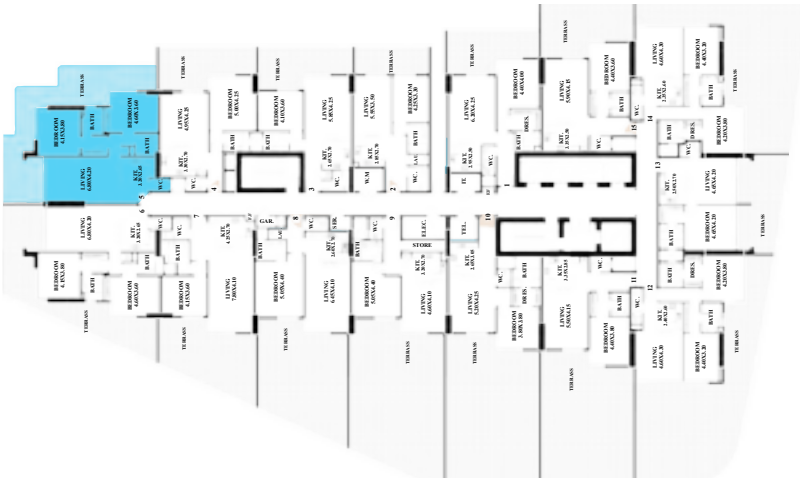
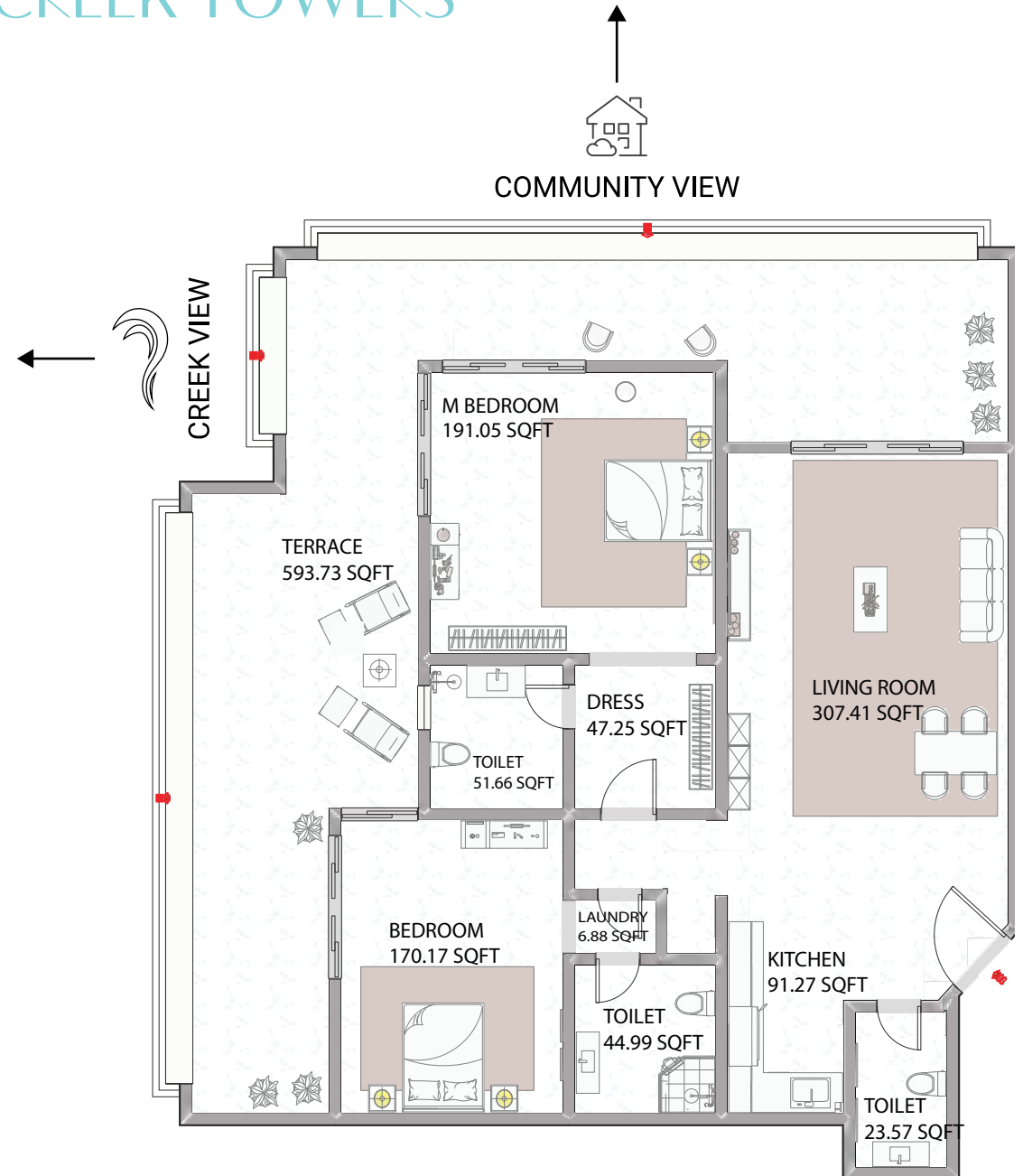


# AJMAN CREEK TOWERS

## APARTMENT 2 BEDROOMS

UNIT - 05

TOTAL AREA : 2369.23 SQ.FT



### Disclaimer:

1. All materials, finishes, dimensions and drawings are approximate.
2. Information is subject to change without notice.
3. Actual suite area may vary from the stated area.
4. Drawings are not to scale.
5. The Developer reserves the right to make revisions/alterations without any liability whatsoever.



# AJMAN CREEK TOWERS

## APARTMENT 2 BEDROOMS

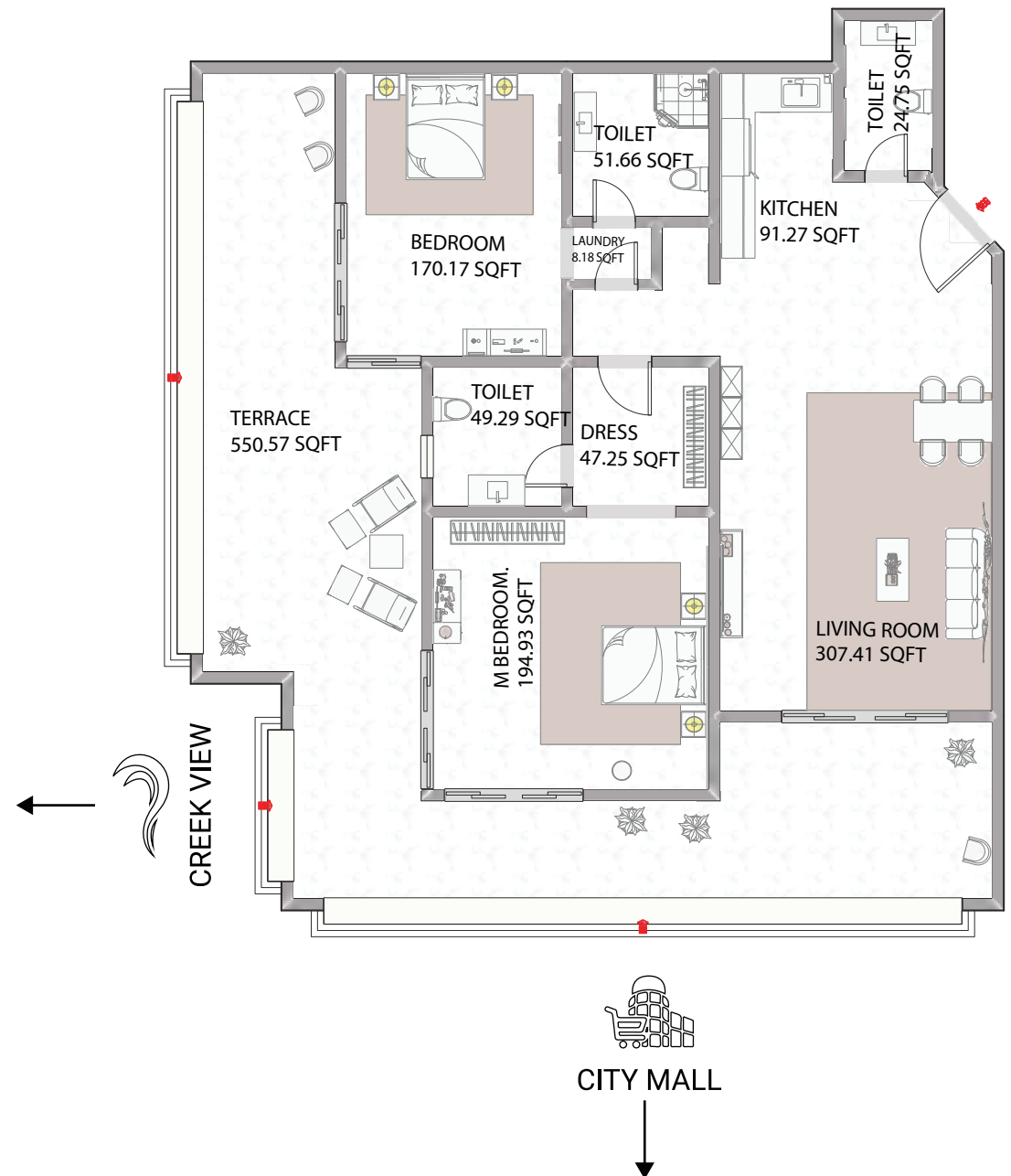
UNIT - 06

TOTAL AREA : 2349.77 SQ.FT



### Disclaimer:

1. All materials, finishes, dimensions and drawings are approximate.
2. Information is subject to change without notice.
3. Actual suite area may vary from the stated area.
4. Drawings are not to scale.
5. The Developer reserves the right to make revisions/alterations without any liability whatsoever.

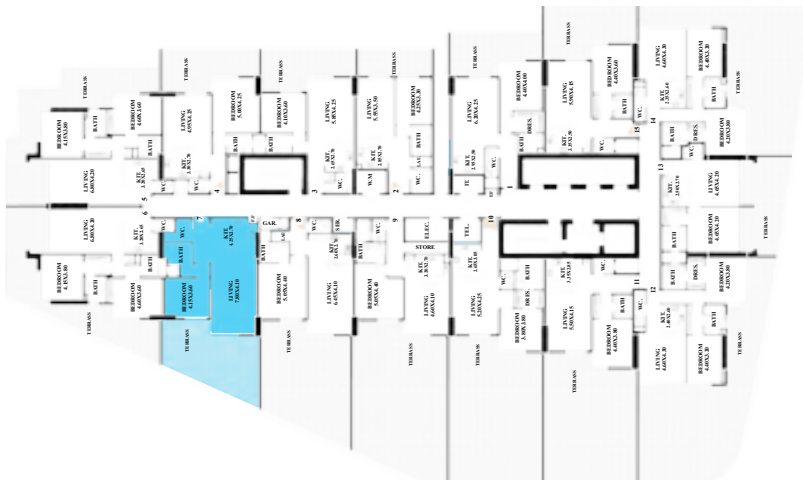


# AJMAN CREEK TOWERS

## APARTMENT 1 BEDROOM

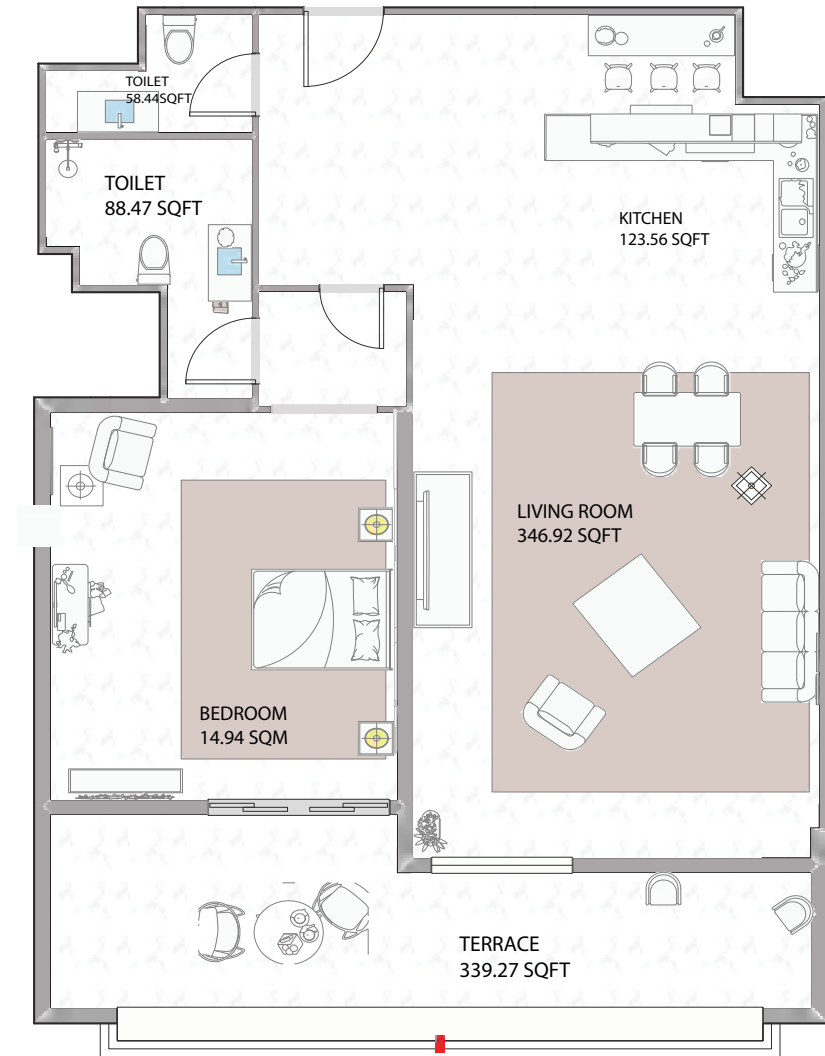
UNIT - 07

TOTAL AREA : 1908.97 SQ.FT



### Disclaimer:

1. All materials, finishes, dimensions and drawings are approximate.
2. Information is subject to change without notice.
3. Actual suite area may vary from the stated area.
4. Drawings are not to scale.
5. The Developer reserves the right to make revisions/alterations without any liability whatsoever.



CREEK VIEW

CREEK VIEW

CITY MALL

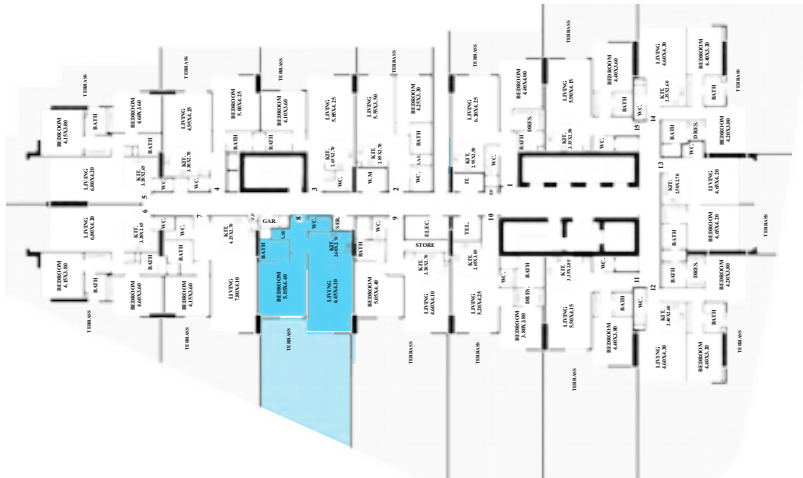


# AJMAN CREEK TOWERS

## APARTMENT 1 BEDROOM

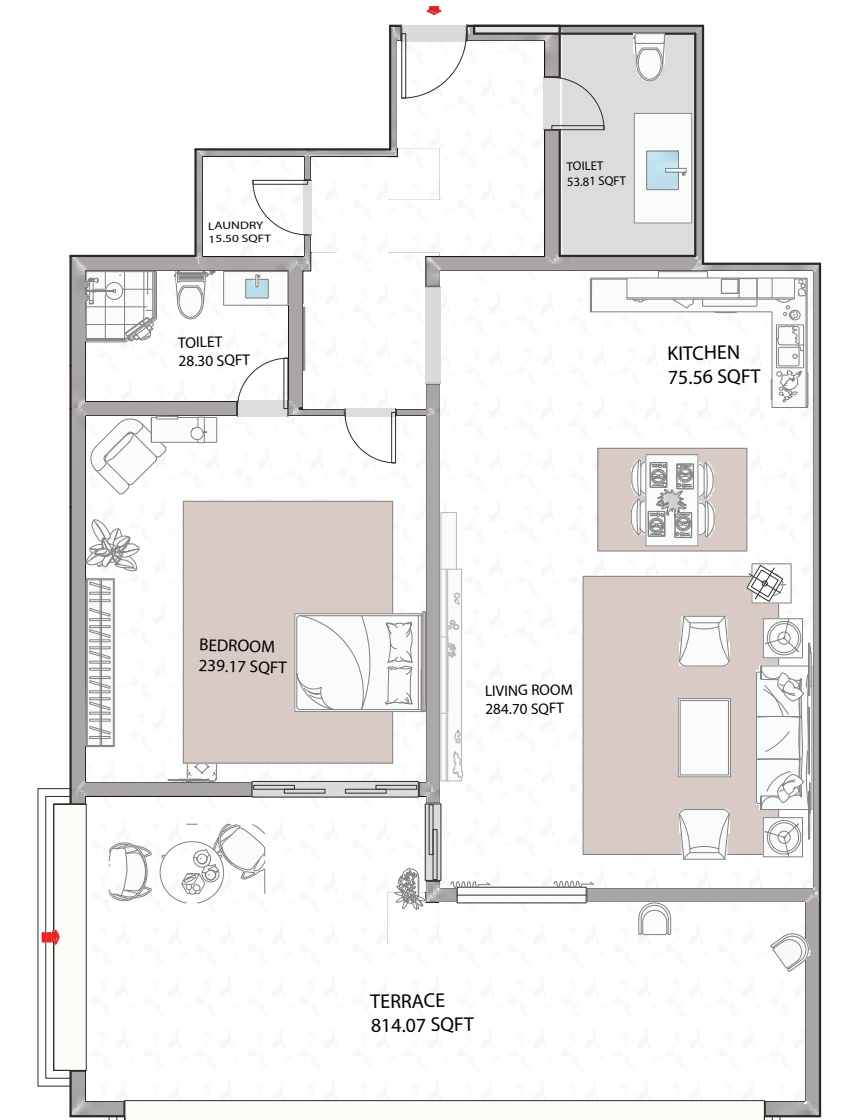
UNIT - 08

TOTAL AREA : 2277.46 SQ.FT



### Disclaimer:

1. All materials, finishes, dimensions and drawings are approximate.
2. Information is subject to change without notice.
3. Actual suite area may vary from the stated area.
4. Drawings are not to scale.
5. The Developer reserves the right to make revisions/alterations without any liability whatsoever.



CREEK VIEW

CREEK VIEW

CITY MALL

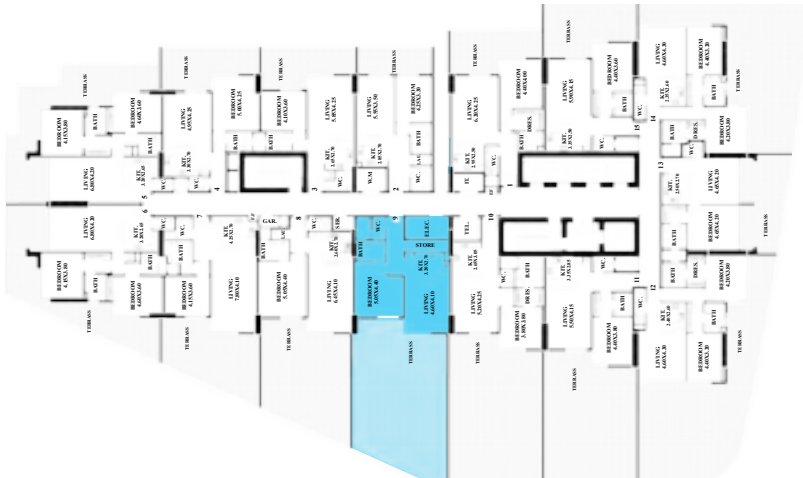


# AJMAN CREEK TOWERS

## APARTMENT 1 BEDROOM

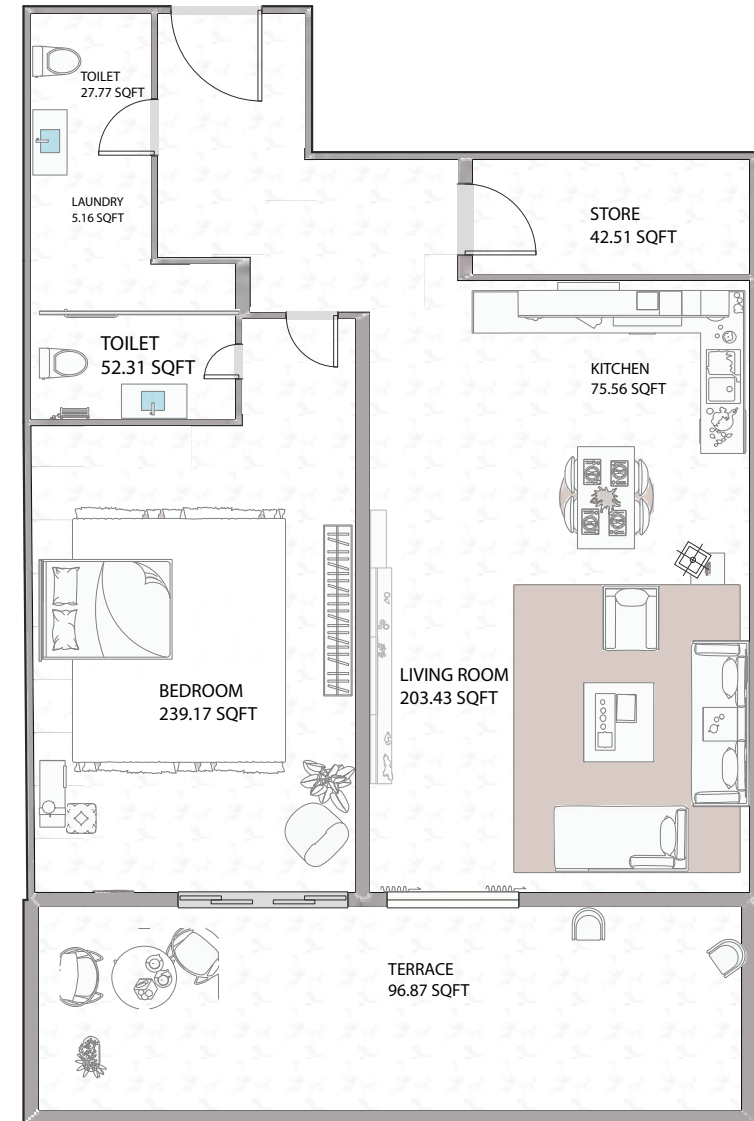
UNIT - 09

TOTAL AREA : 2730.77 SQ.FT



### Disclaimer:

1. All materials, finishes, dimensions and drawings are approximate.
2. Information is subject to change without notice.
3. Actual suite area may vary from the stated area.
4. Drawings are not to scale.
5. The Developer reserves the right to make revisions/alterations without any liability whatsoever.



CREEK VIEW

CREEK VIEW

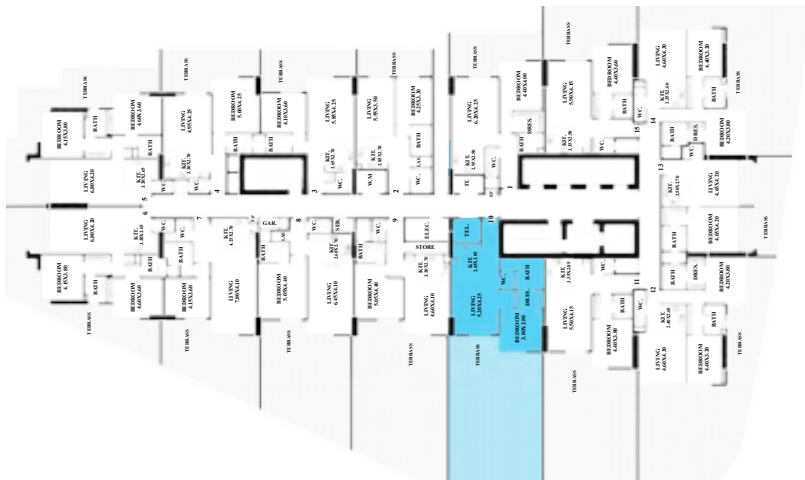
CITY MALL

# AJMAN CREEK TOWERS

## APARTMENT 1 BEDROOM

UNIT - 10

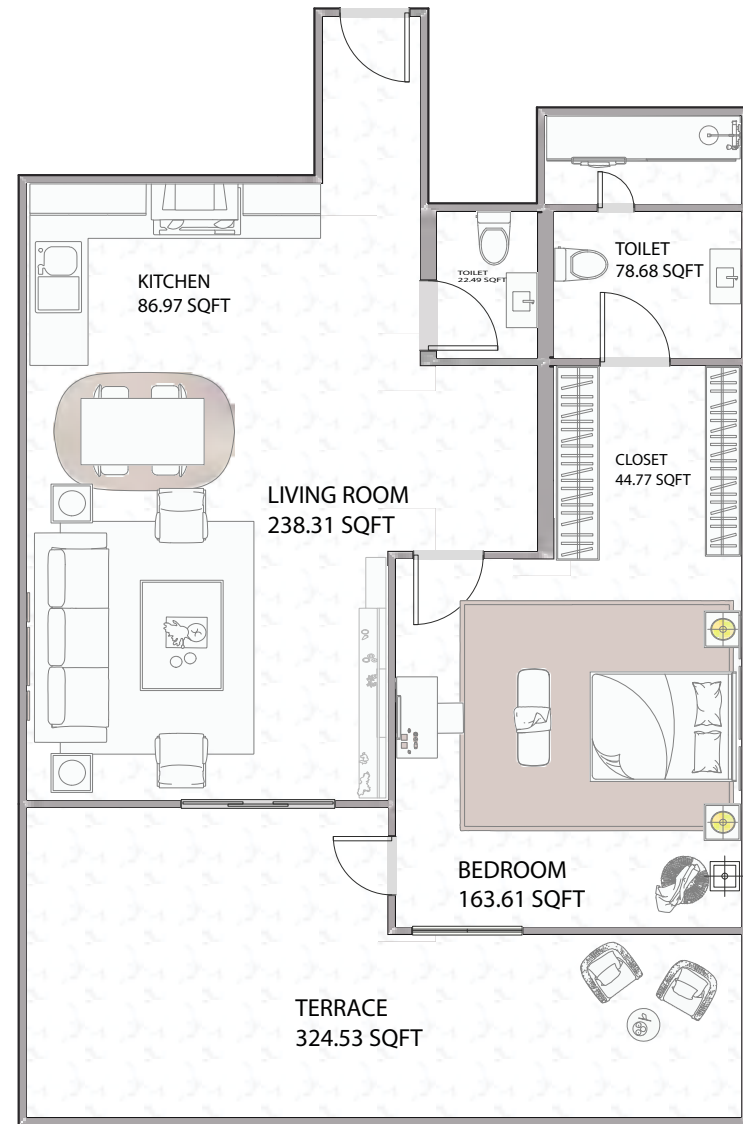
TOTAL AREA : 2701.93 SQ.FT



### Disclaimer:

1. All materials, finishes, dimensions and drawings are approximate.
2. Information is subject to change without notice.
3. Actual suite area may vary from the stated area.
4. Drawings are not to scale.
5. The Developer reserves the right to make revisions/alterations without any liability whatsoever.

CREEK VIEW



CREEK VIEW

CITY MALL

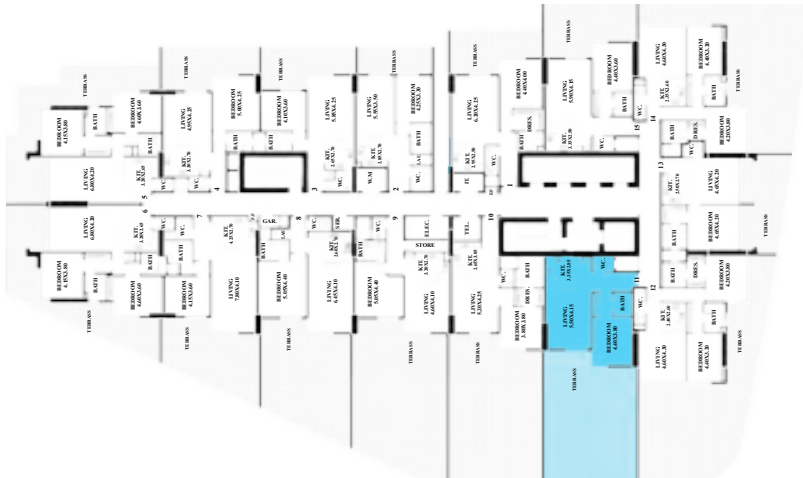


# AJMAN CREEK TOWERS

## APARTMENT 1 BEDROOM

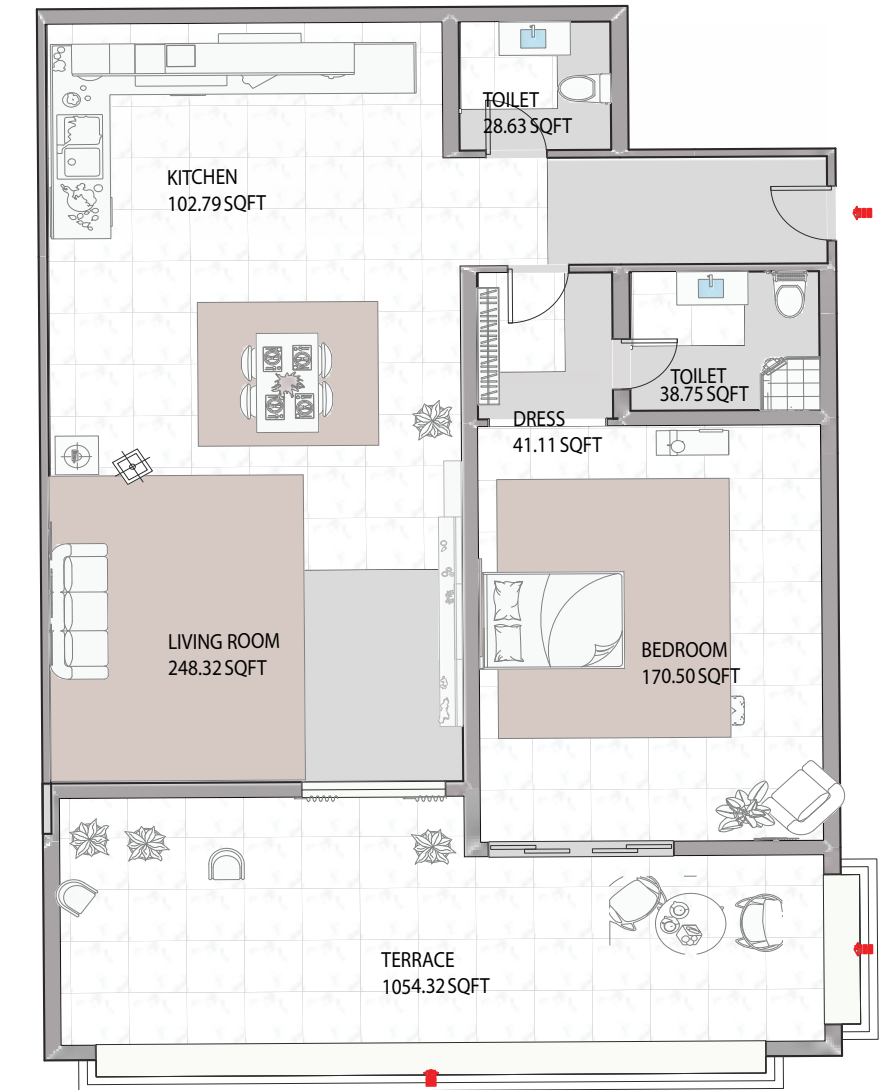
UNIT - 11

TOTAL AREA : 2499.78 SQ.FT



### Disclaimer:

1. All materials, finishes, dimensions and drawings are approximate.
2. Information is subject to change without notice.
3. Actual suite area may vary from the stated area.
4. Drawings are not to scale.
5. The Developer reserves the right to make revisions/alterations without any liability whatsoever.



CREEK VIEW

CREEK VIEW

CITY MALL

# AJMAN CREEK TOWERS

APARTMENT  
**2 BEDROOMS**

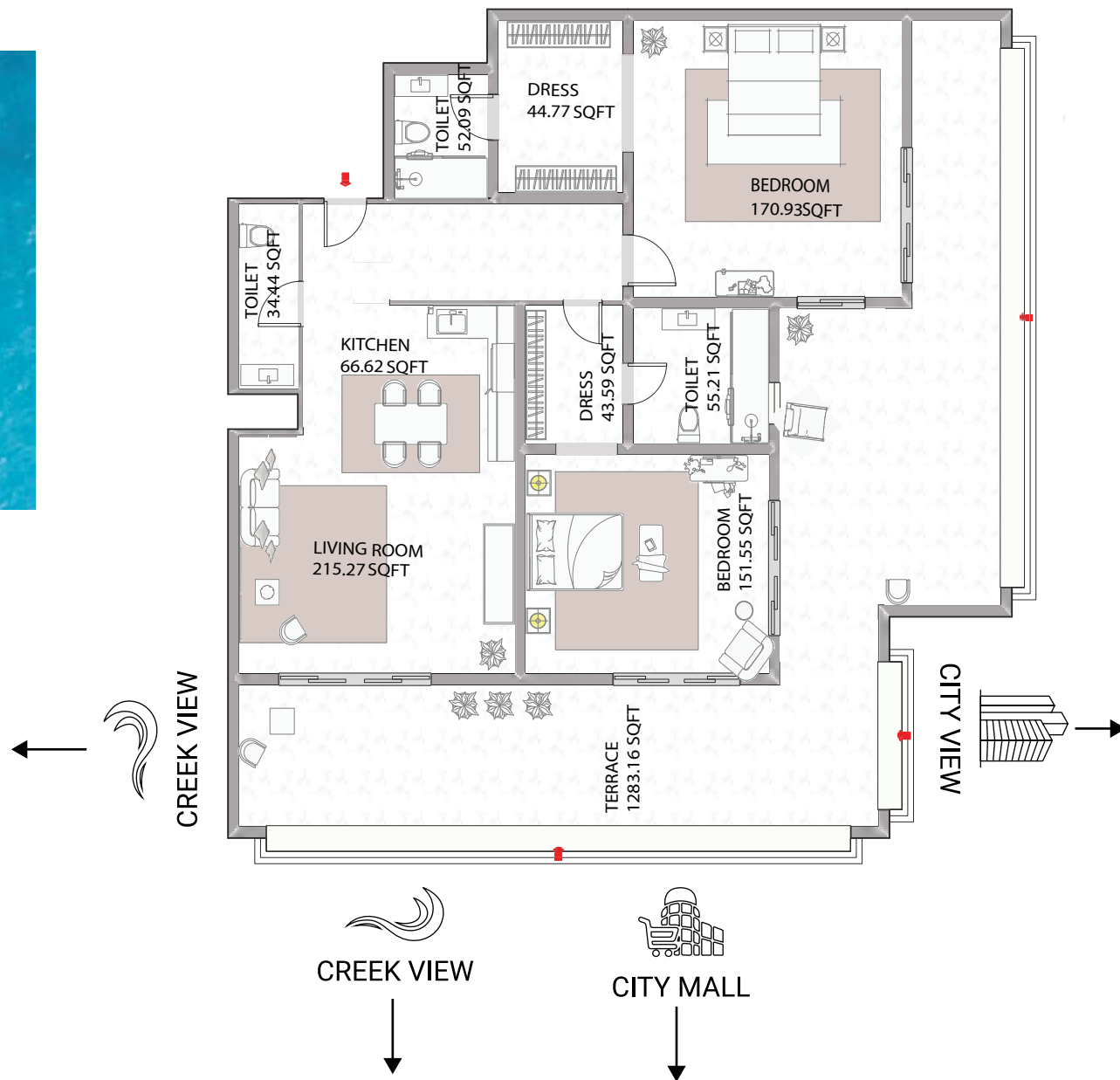
## UNIT - 12

**TOTAL AREA : 2915.44 SQ.FT**



**Disclaimer:**

1. All materials, finishes, dimensions and drawings are approximate.
2. Information is subject to change without notice.
3. Actual suite area may vary from the stated area.
4. Drawings are not to scale.
5. The Developer reserves the right to make revisions/alterations without any liability whatsoever.



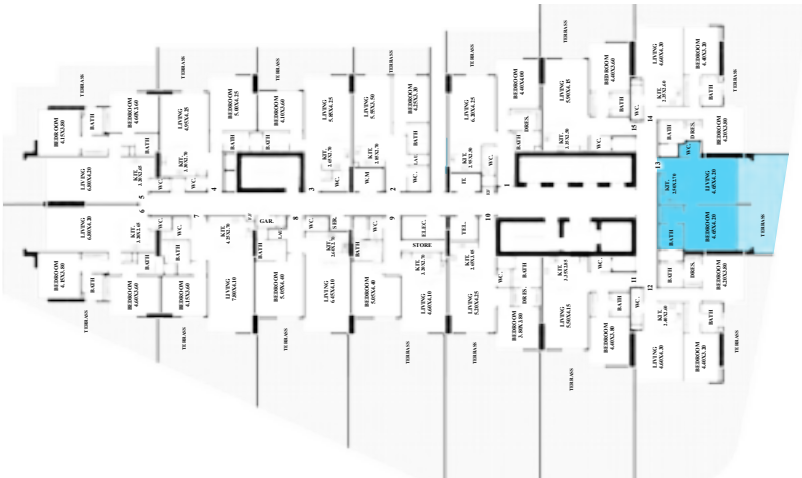
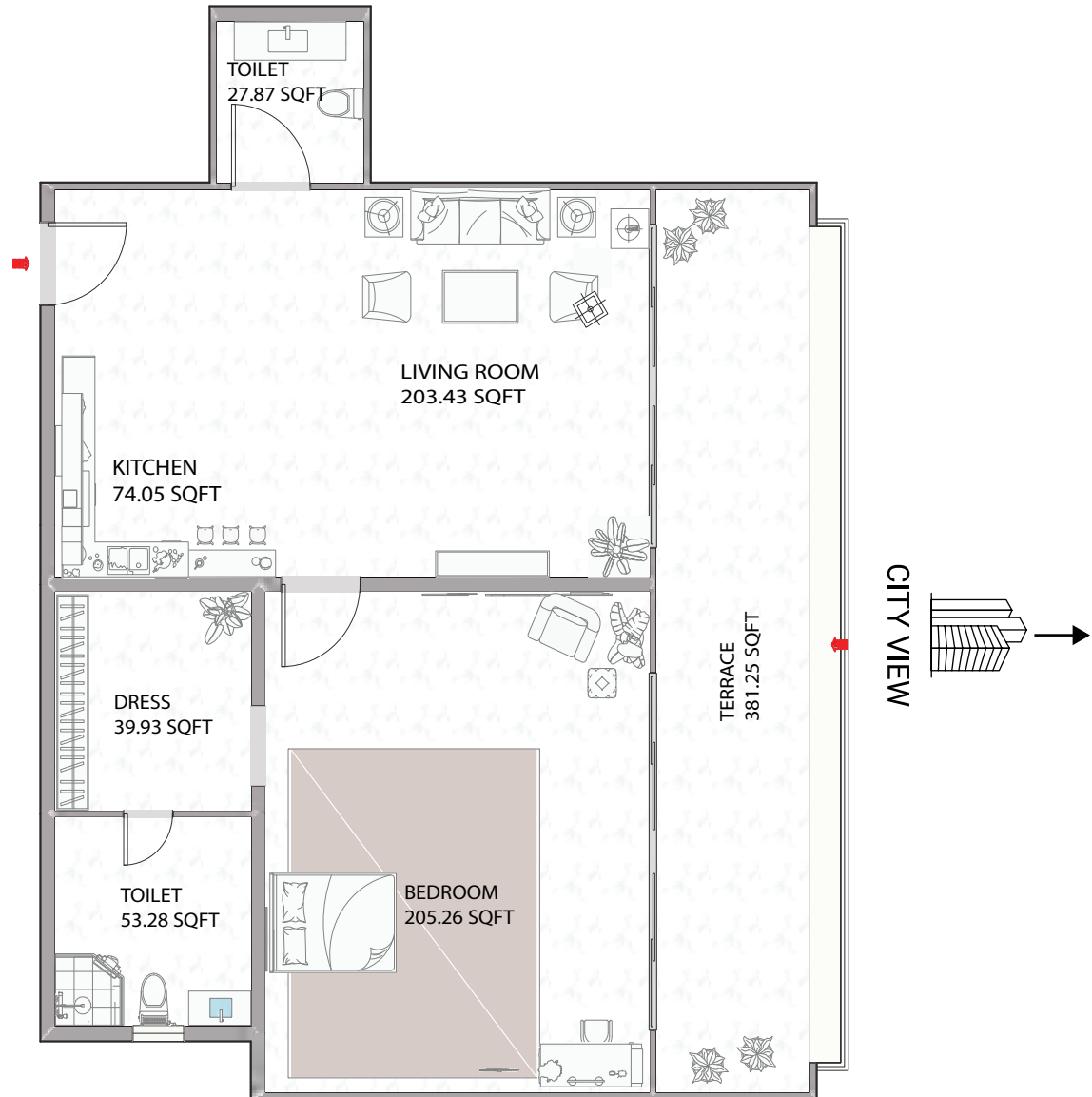


# AJMAN CREEK TOWERS

## APARTMENT 1 BEDROOM

UNIT - 13

TOTAL AREA : 1344.15 SQ.FT



### Disclaimer:

1. All materials, finishes, dimensions and drawings are approximate.
2. Information is subject to change without notice.
3. Actual suite area may vary from the stated area.
4. Drawings are not to scale.
5. The Developer reserves the right to make revisions/alterations without any liability whatsoever.

# AJMAN CREEK TOWERS

## APARTMENT 2 BEDROOMS

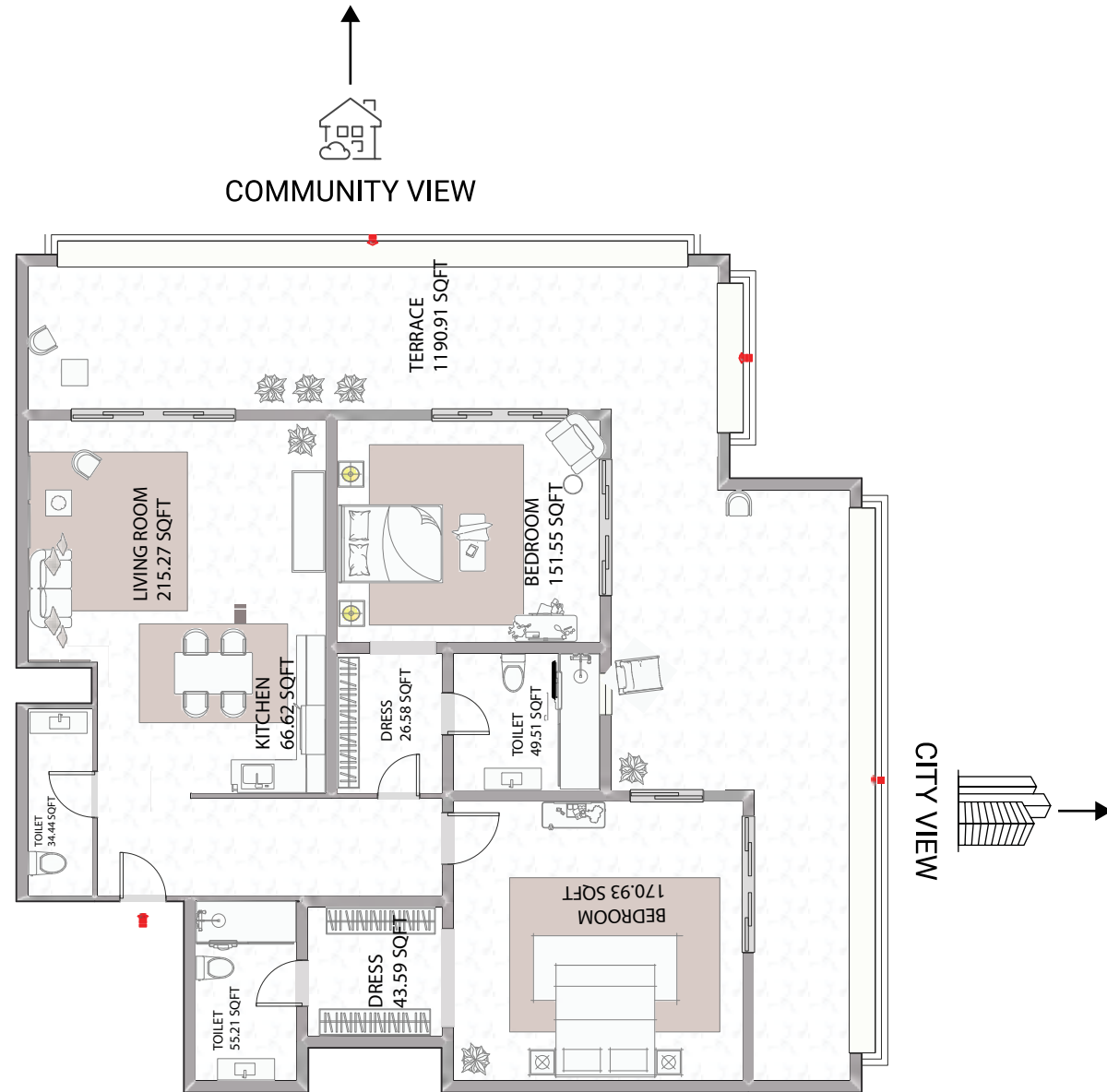
UNIT - 14

TOTAL AREA : 2837.31 SQ.FT



### Disclaimer:

1. All materials, finishes, dimensions and drawings are approximate.
2. Information is subject to change without notice.
3. Actual suite area may vary from the stated area.
4. Drawings are not to scale.
5. The Developer reserves the right to make revisions/alterations without any liability whatsoever.



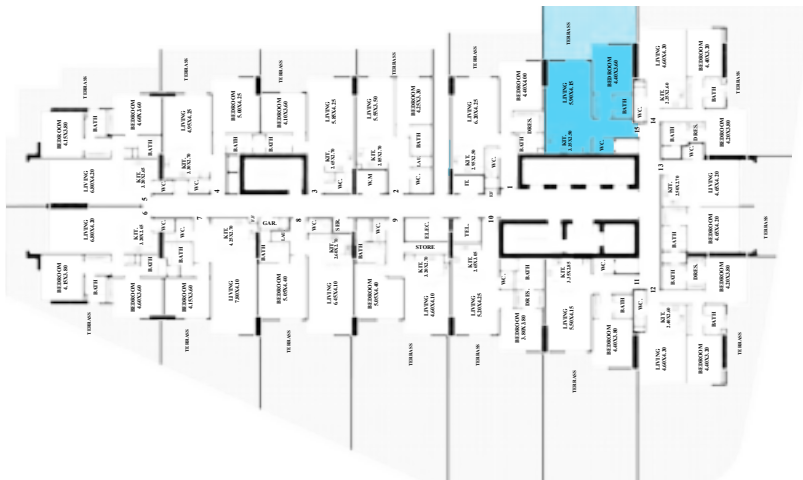


# AJMAN CREEK TOWERS

## APARTMENT 1 BEDROOM

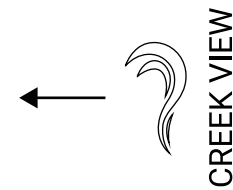
UNIT - 15

TOTAL AREA : 1652.98 SQ.FT

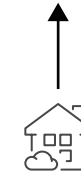


### Disclaimer:

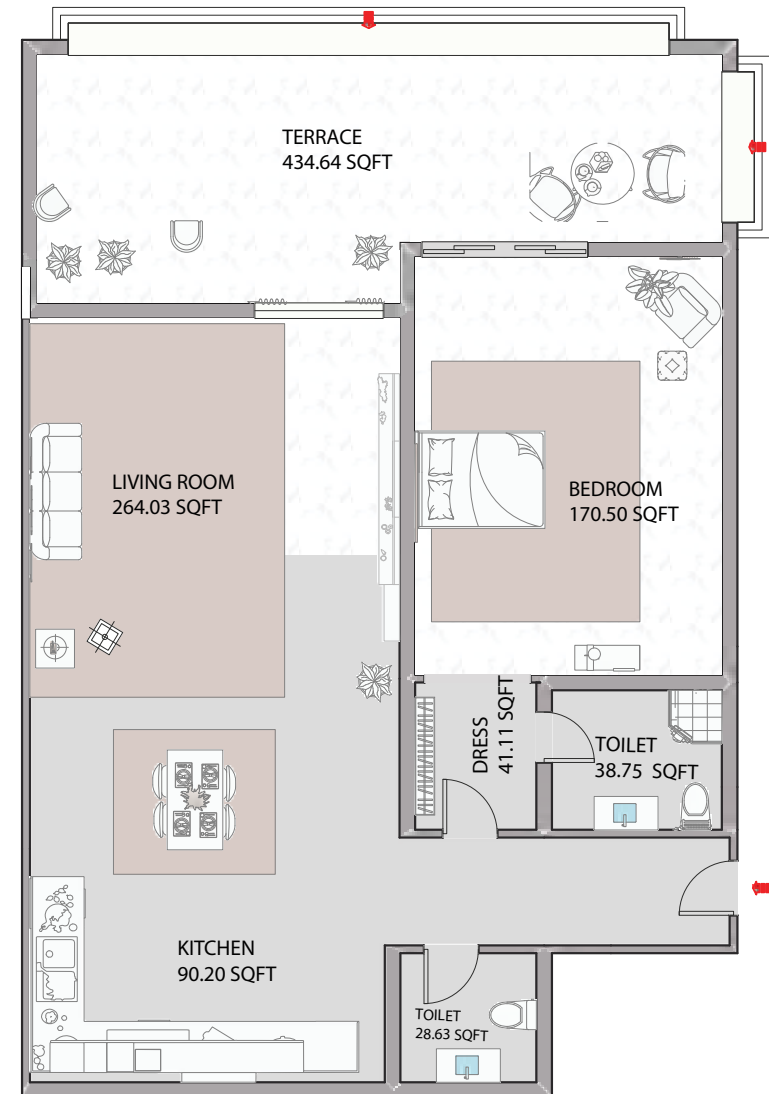
1. All materials, finishes, dimensions and drawings are approximate.
2. Information is subject to change without notice.
3. Actual suite area may vary from the stated area.
4. Drawings are not to scale.
5. The Developer reserves the right to make revisions/alterations without any liability whatsoever.



CREEK VIEW



COMMUNITY VIEW



TERRACE  
434.64 SQFT

LIVING ROOM  
264.03 SQFT

BEDROOM  
170.50 SQFT

DRESS  
41.11 SQFT

TOILET  
38.75 SQFT

KITCHEN  
90.20 SQFT

TOILET  
28.63 SQFT

AJMAN CREEK TOWERS

# TOWER 1

FLOOR 2-9, 11-19, 21-25

FLOOR PLANS



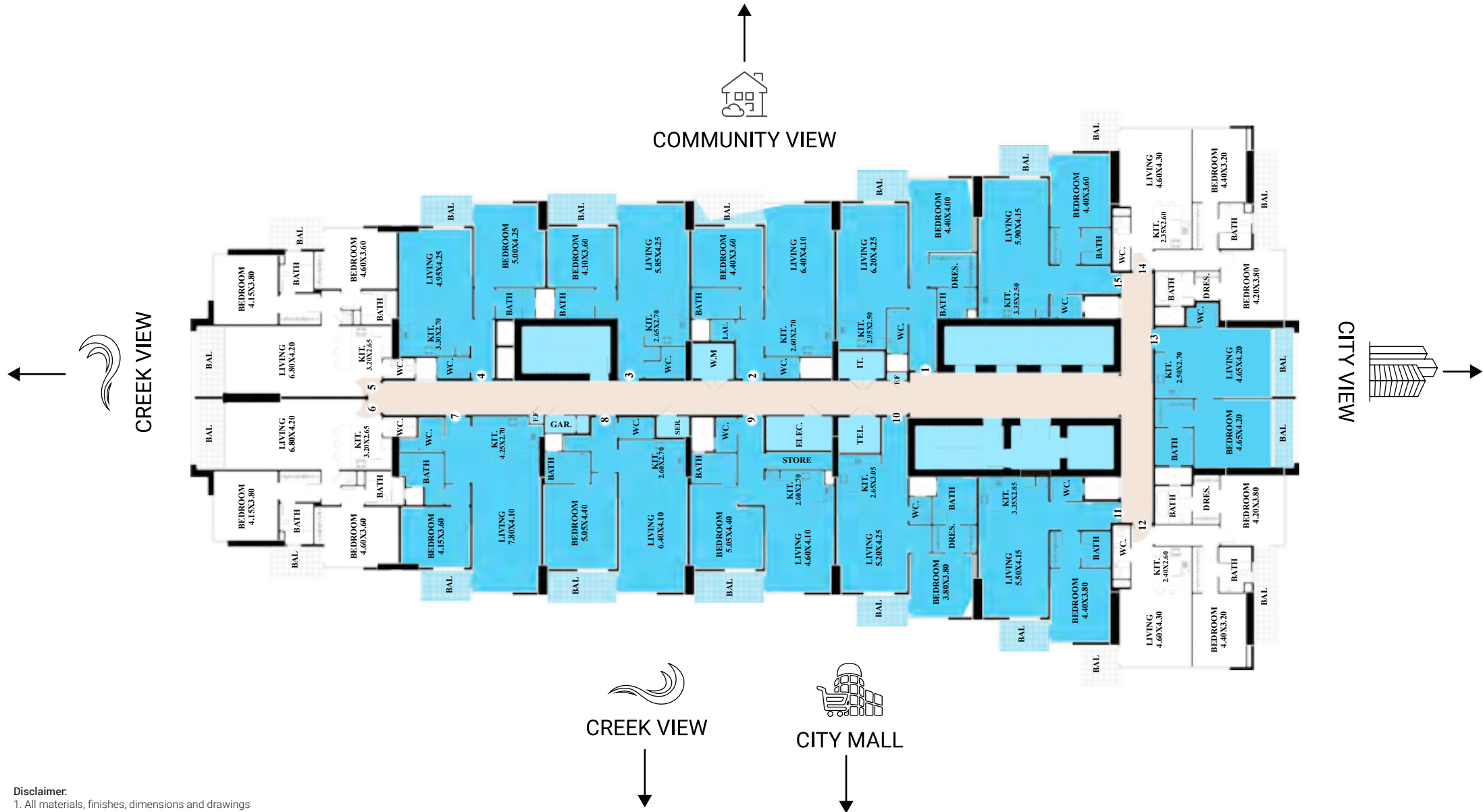








# MASTERPLAN



## Disclaimer:

1. All materials, finishes, dimensions and drawings are approximate.
2. Information is subject to change without notice.
3. Actual suite area may vary from the stated area.
4. Drawings are not to scale.
5. The Developer reserves the right to make revisions/alterations without any liability whatsoever.

# AJMAN CREEK TOWERS

## APARTMENT 1 BEDROOM

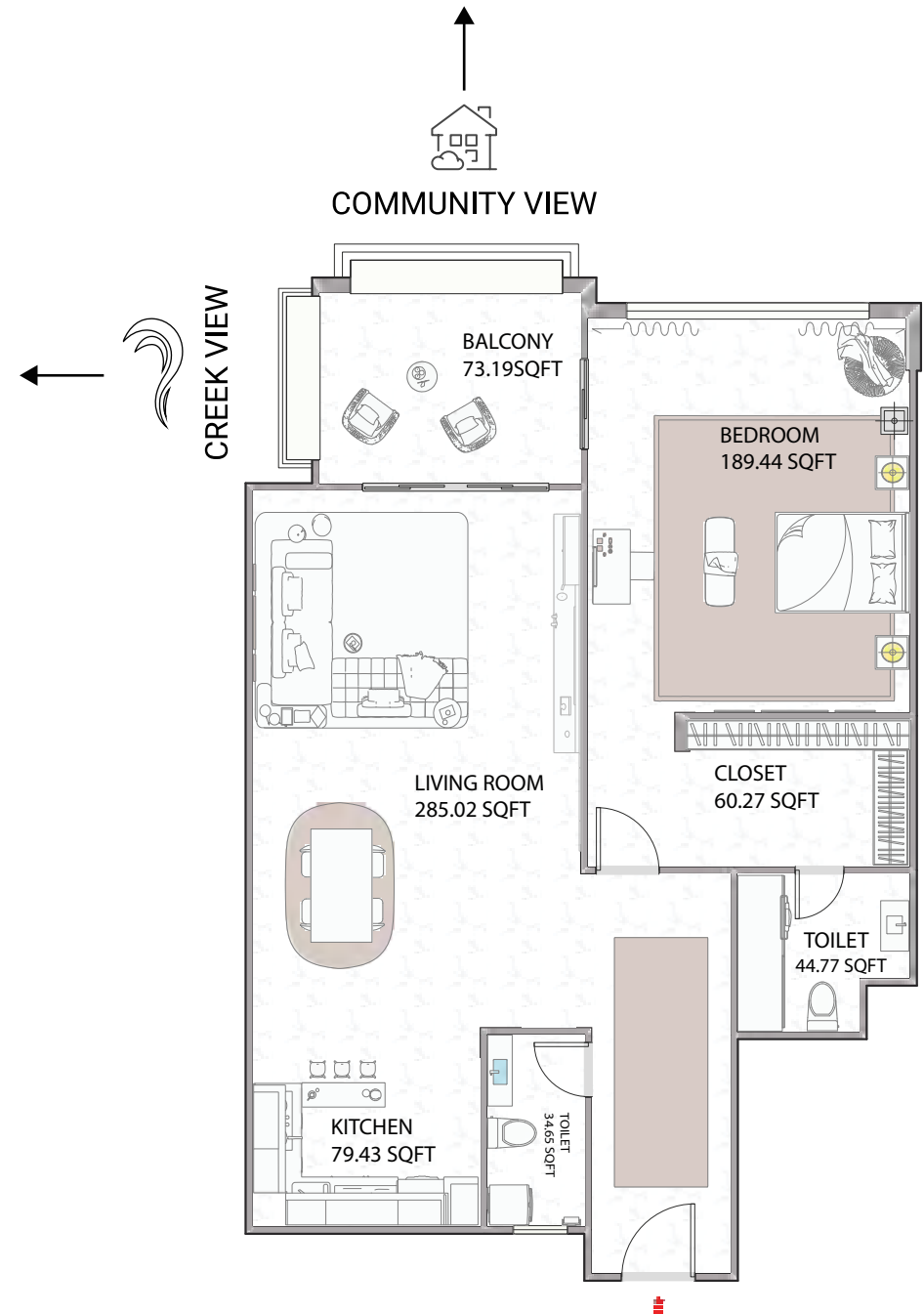
UNIT - 01

TOTAL AREA : 1236.18 SQ.FT



### Disclaimer:

1. All materials, finishes, dimensions and drawings are approximate.
2. Information is subject to change without notice.
3. Actual suite area may vary from the stated area.
4. Drawings are not to scale.
5. The Developer reserves the right to make revisions/alterations without any liability whatsoever.

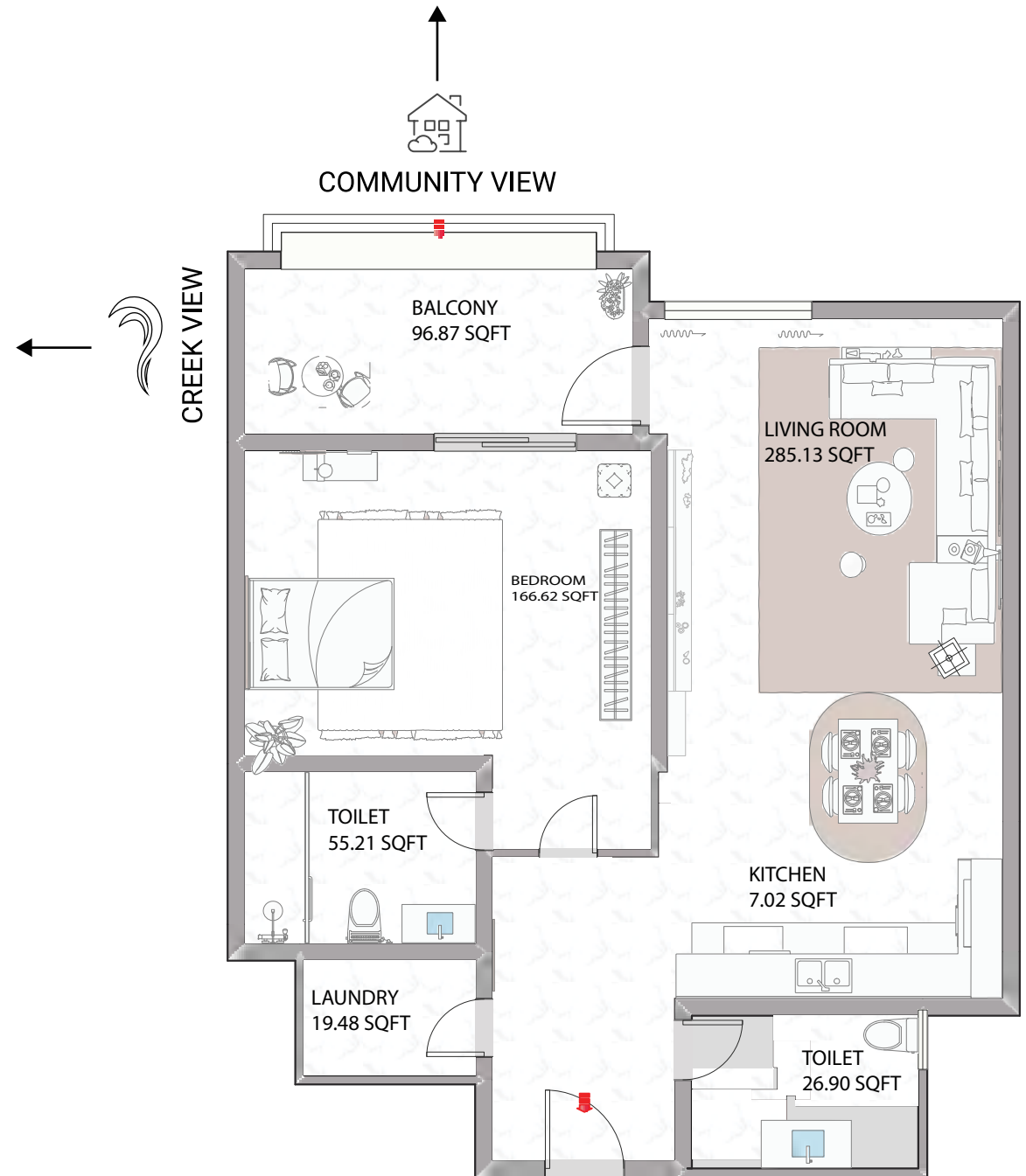


# AJMAN CREEK TOWERS

## APARTMENT 1 BEDROOM

UNIT - 02

TOTAL AREA : 1216.58 SQ.FT



### Disclaimer:

1. All materials, finishes, dimensions and drawings are approximate.
2. Information is subject to change without notice.
3. Actual suite area may vary from the stated area.
4. Drawings are not to scale.
5. The Developer reserves the right to make revisions/alterations without any liability whatsoever.

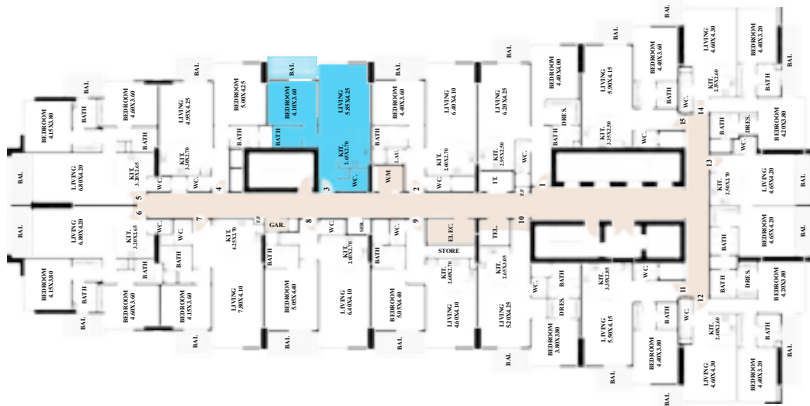


# AJMAN CREEK TOWERS

## APARTMENT 1 BEDROOM

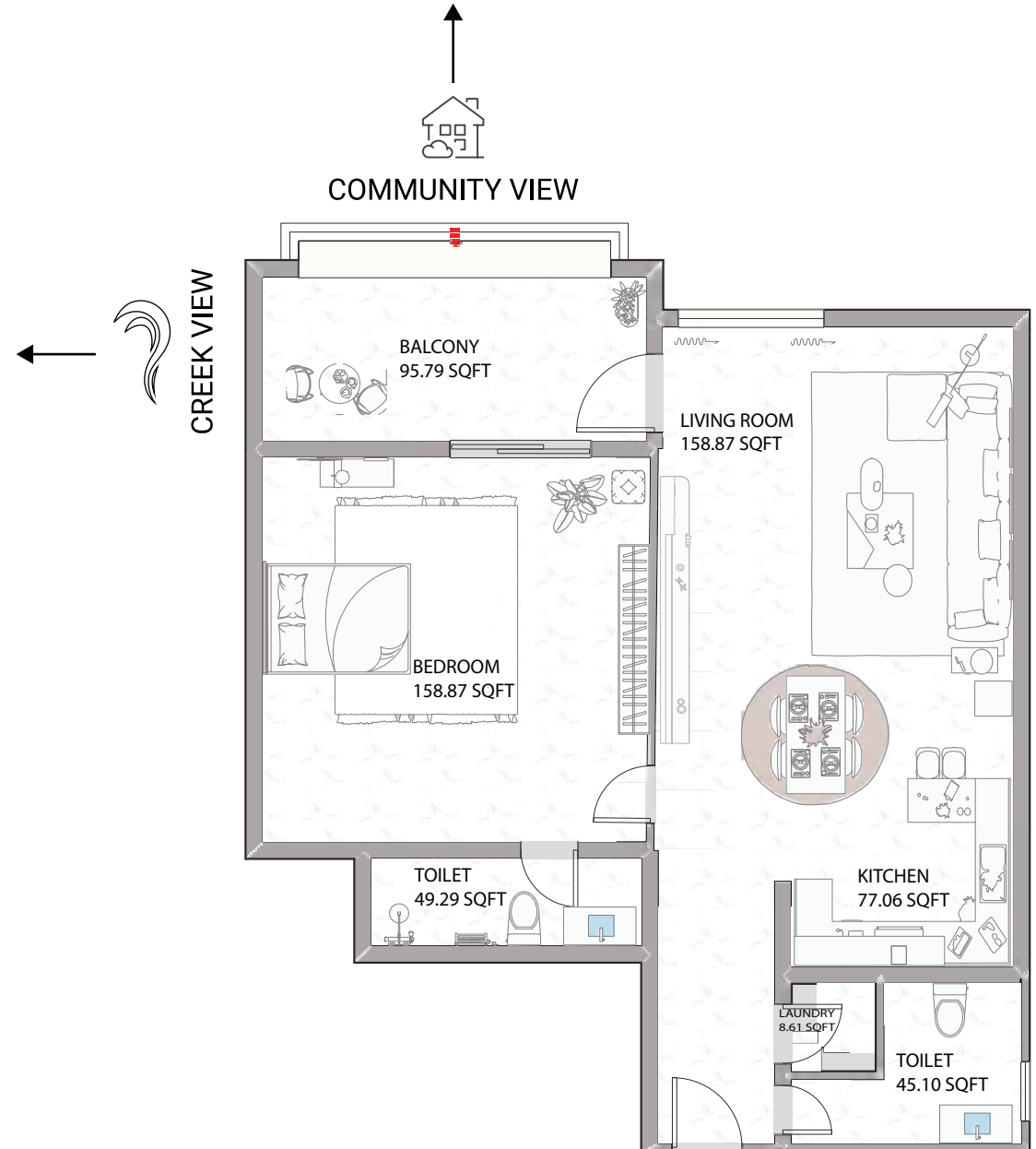
UNIT - 03

TOTAL AREA : 1097.11 SQ.FT



### Disclaimer:

1. All materials, finishes, dimensions and drawings are approximate.
2. Information is subject to change without notice.
3. Actual suite area may vary from the stated area.
4. Drawings are not to scale.
5. The Developer reserves the right to make revisions/alterations without any liability whatsoever.



# AJMAN CREEK TOWERS

## APARTMENT 1 BEDROOM

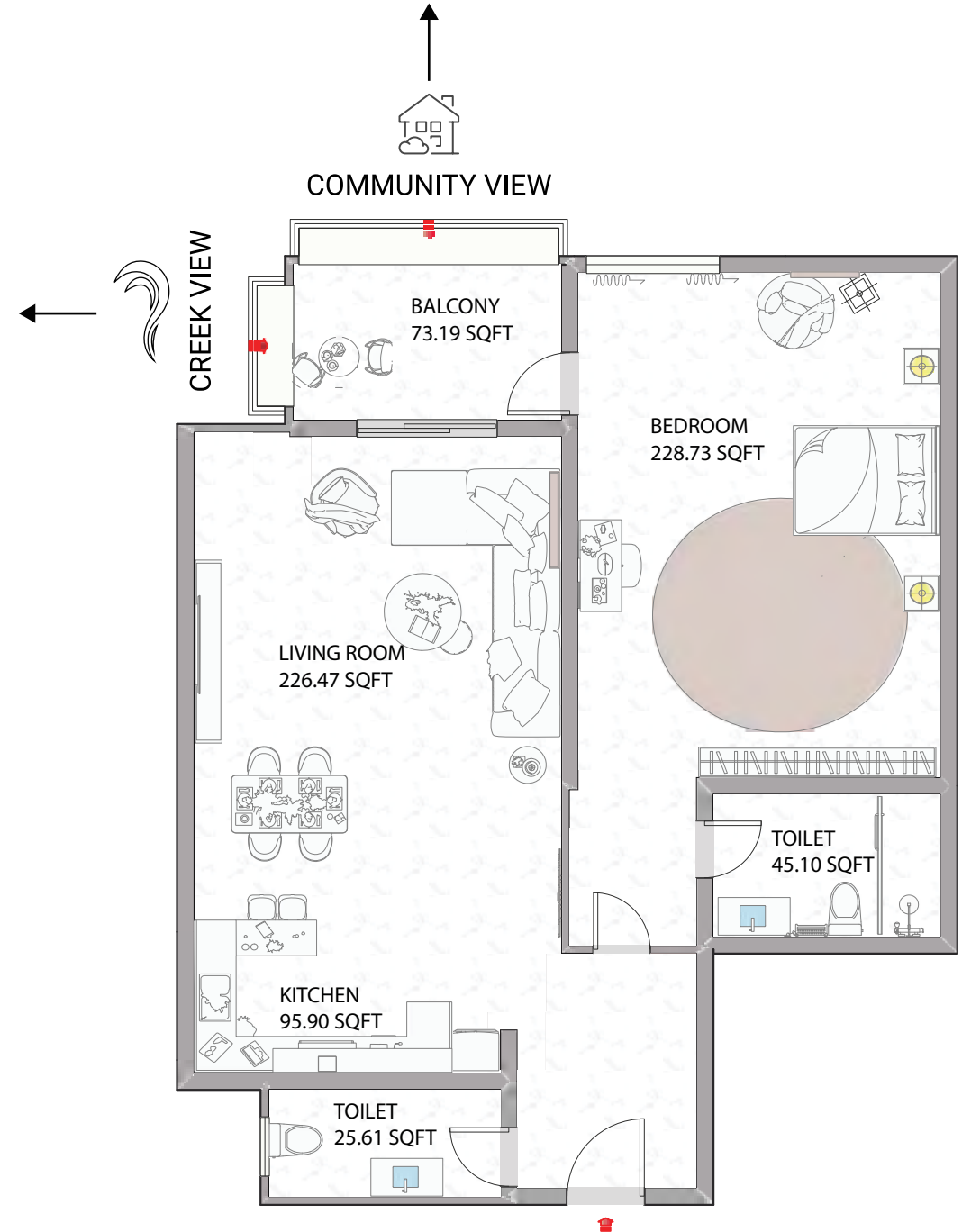
UNIT - 04

TOTAL AREA : 1150.24 SQ.FT



### Disclaimer:

1. All materials, finishes, dimensions and drawings are approximate.
2. Information is subject to change without notice.
3. Actual suite area may vary from the stated area.
4. Drawings are not to scale.
5. The Developer reserves the right to make revisions/alterations without any liability whatsoever.

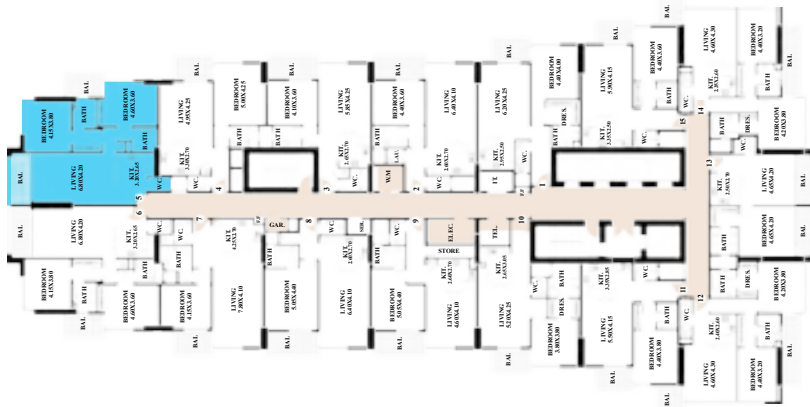


# AJMAN CREEK TOWERS

## APARTMENT 2 BEDROOMS

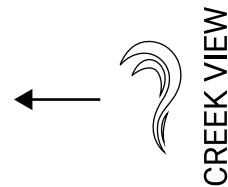
UNIT - 05

TOTAL AREA : 1665.20 SQ.FT

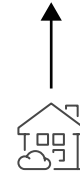
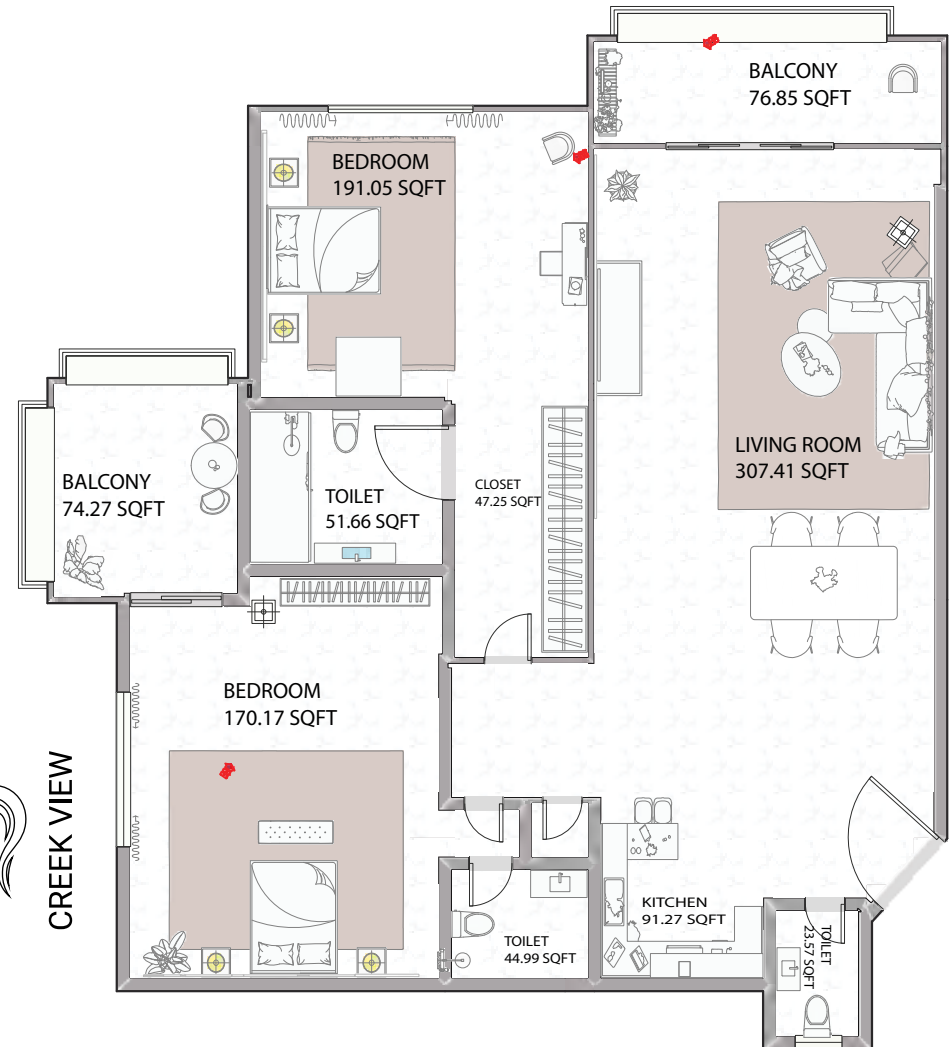


### Disclaimer:

1. All materials, finishes, dimensions and drawings are approximate.
2. Information is subject to change without notice.
3. Actual suite area may vary from the stated area.
4. Drawings are not to scale.
5. The Developer reserves the right to make revisions/alterations without any liability whatsoever.



CREEK VIEW



COMMUNITY VIEW

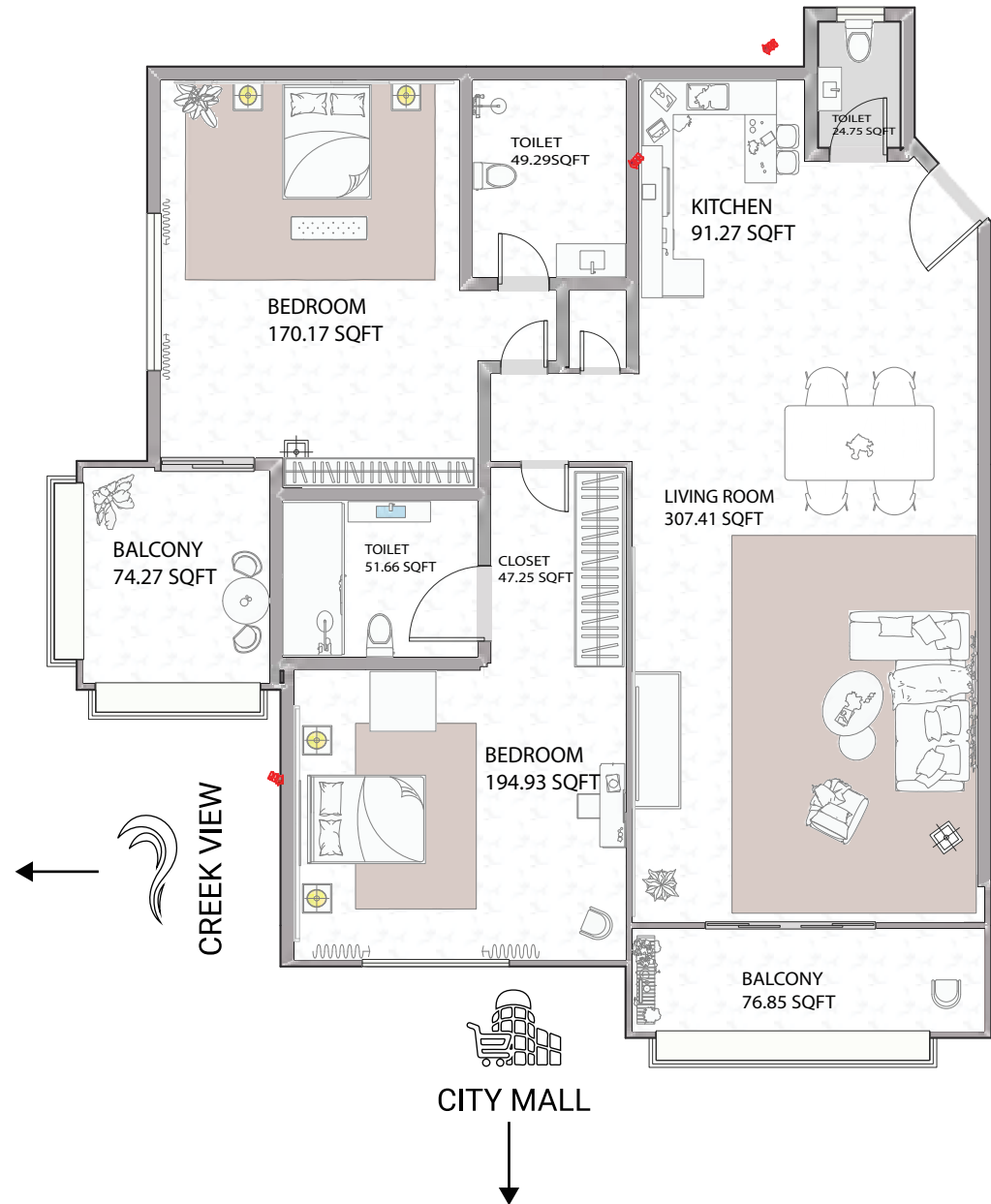


# AJMAN CREEK TOWERS

## APARTMENT 2 BEDROOMS

UNIT - 06

TOTAL AREA : 1682.24 SQ.FT



### Disclaimer:

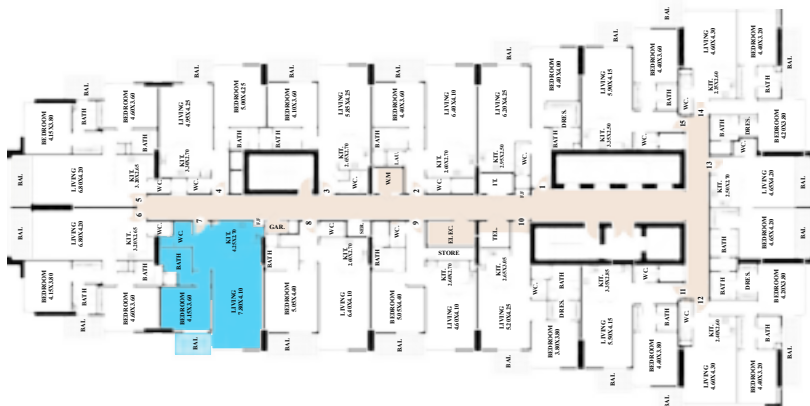
1. All materials, finishes, dimensions and drawings are approximate.
2. Information is subject to change without notice.
3. Actual suite area may vary from the stated area.
4. Drawings are not to scale.
5. The Developer reserves the right to make revisions/alterations without any liability whatsoever.

# AJMAN CREEK TOWERS

## APARTMENT 1 BEDROOM

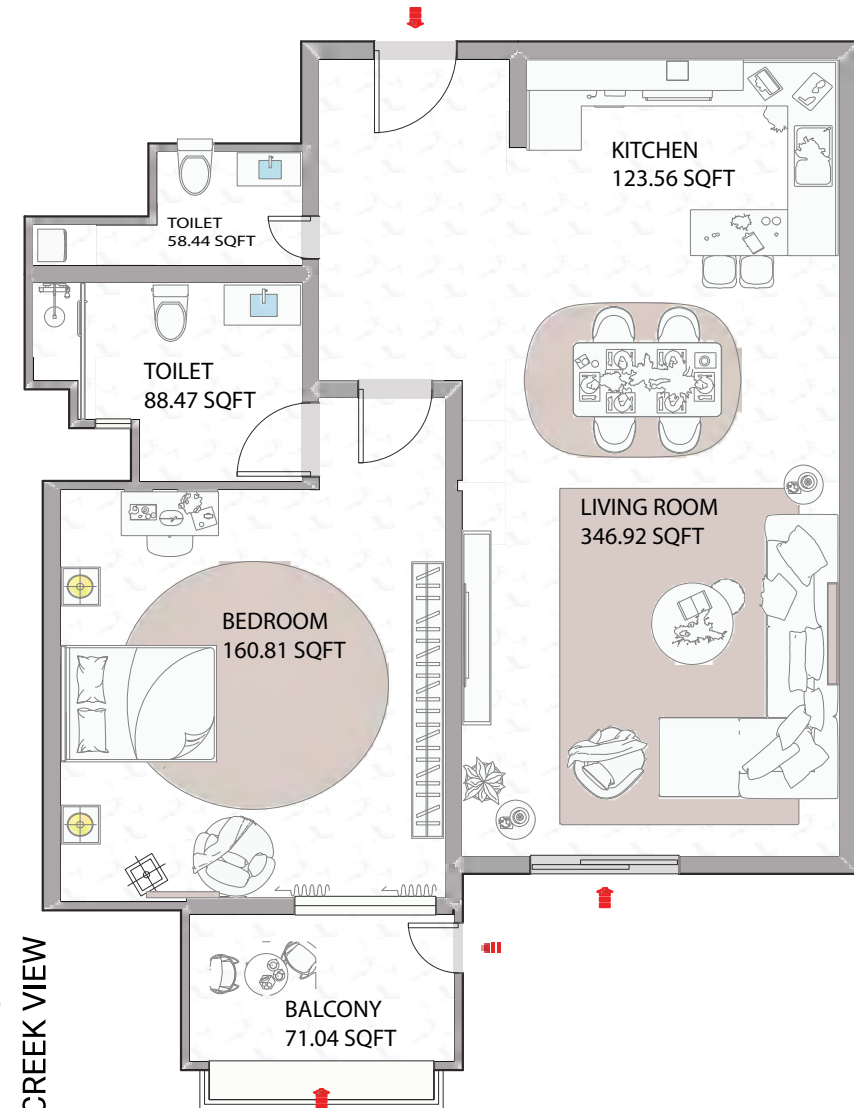
UNIT - 07

TOTAL AREA : 1270.42 SQ.FT



### Disclaimer:

1. All materials, finishes, dimensions and drawings are approximate.
2. Information is subject to change without notice.
3. Actual suite area may vary from the stated area.
4. Drawings are not to scale.
5. The Developer reserves the right to make revisions/alterations without any liability whatsoever.



CREEK VIEW

CREEK VIEW

CITY MALL

# AJMAN CREEK TOWERS

## APARTMENT 1 BEDROOM

UNIT - 08

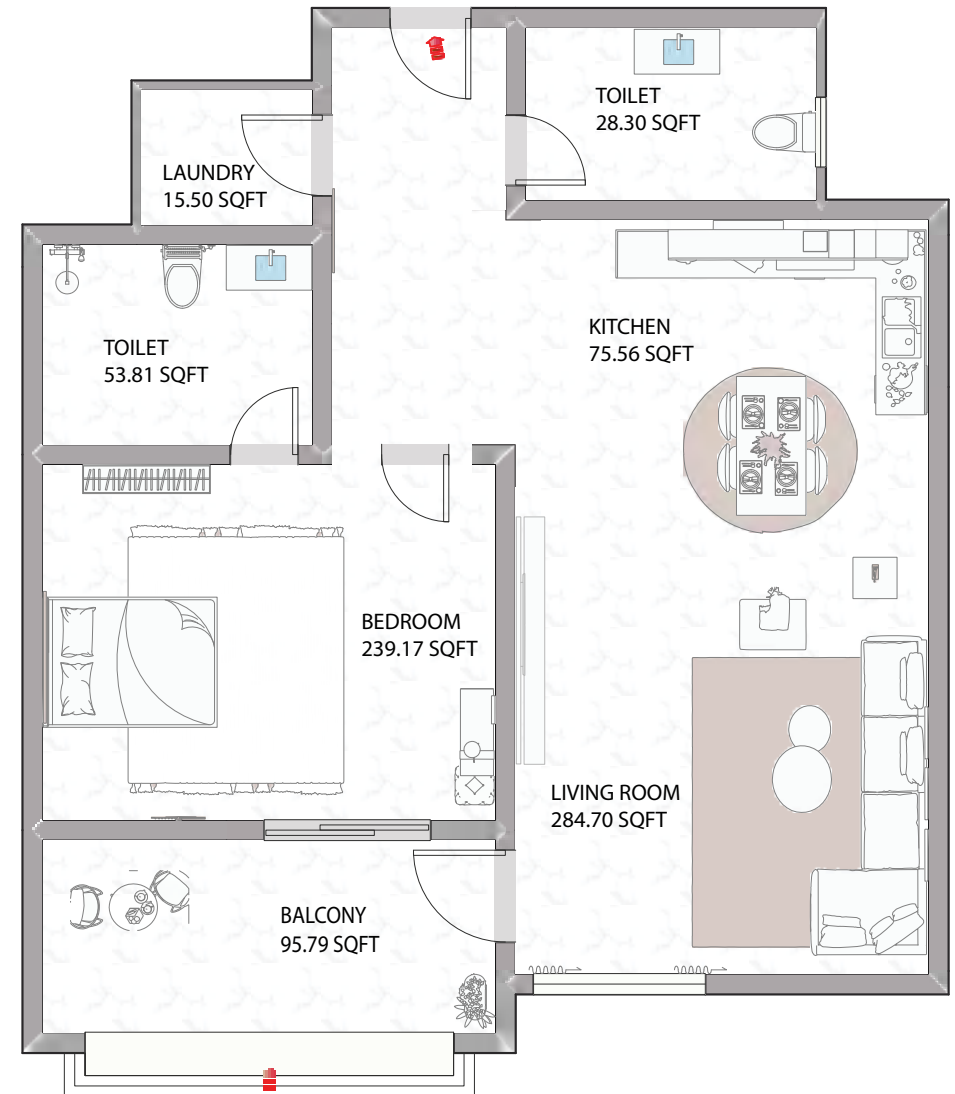
TOTAL AREA : 1274.96 SQ.FT



### Disclaimer:

1. All materials, finishes, dimensions and drawings are approximate.
2. Information is subject to change without notice.
3. Actual suite area may vary from the stated area.
4. Drawings are not to scale.
5. The Developer reserves the right to make revisions/alterations without any liability whatsoever.

CREEK VIEW



CREEK VIEW

CITY MALL



# AJMAN CREEK TOWERS

## APARTMENT 1 BEDROOM

UNIT - 09

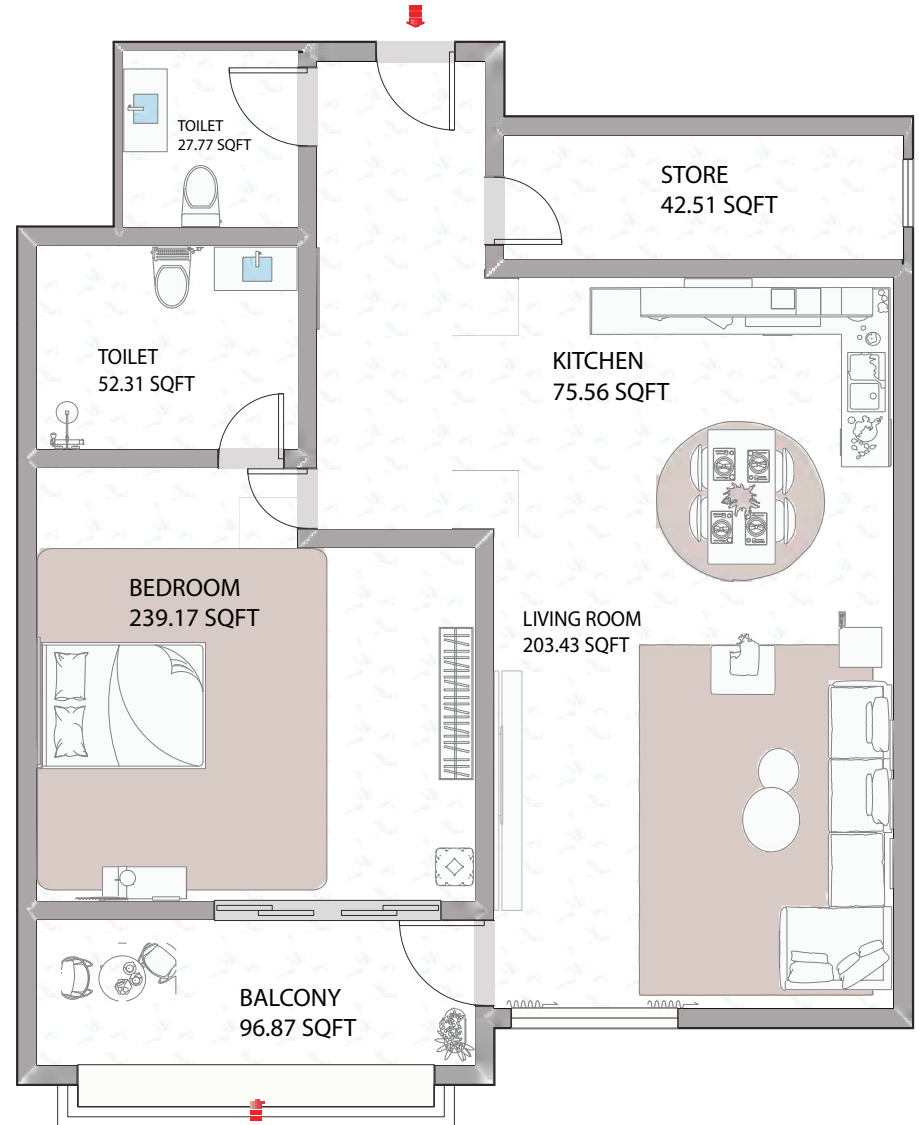
TOTAL AREA : 1187.74 SQ.FT



### Disclaimer:

1. All materials, finishes, dimensions and drawings are approximate.
2. Information is subject to change without notice.
3. Actual suite area may vary from the stated area.
4. Drawings are not to scale.
5. The Developer reserves the right to make revisions/alterations without any liability whatsoever.

CREEK VIEW



CREEK VIEW

CITY MALL

# AJMAN CREEK TOWERS

## APARTMENT 1 BEDROOM

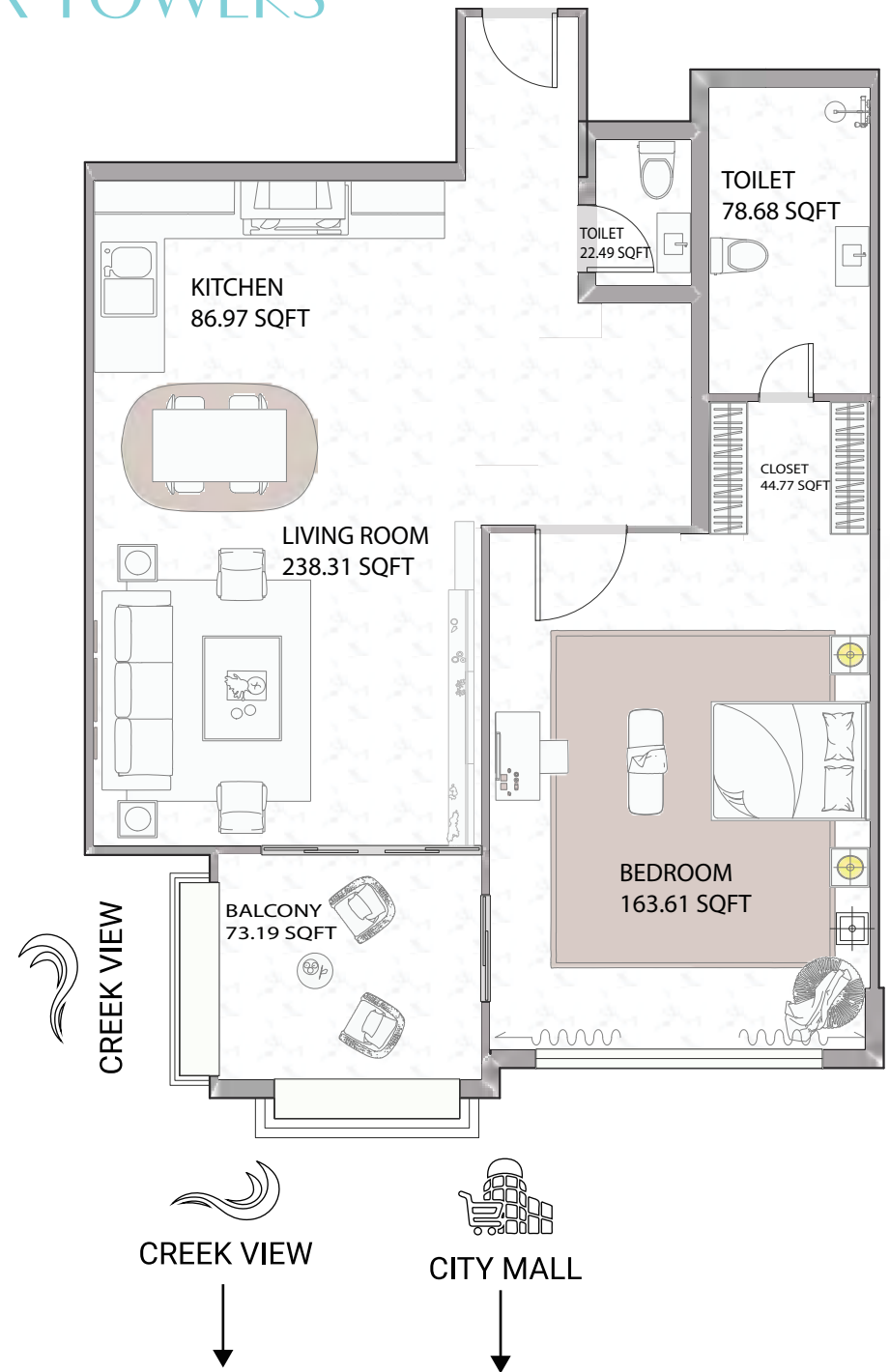
UNIT - 10

TOTAL AREA : 1147.82 SQ.FT



### Disclaimer:

1. All materials, finishes, dimensions and drawings are approximate.
2. Information is subject to change without notice.
3. Actual suite area may vary from the stated area.
4. Drawings are not to scale.
5. The Developer reserves the right to make revisions/alterations without any liability whatsoever.



# AJMAN CREEK TOWERS

## APARTMENT 1 BEDROOM

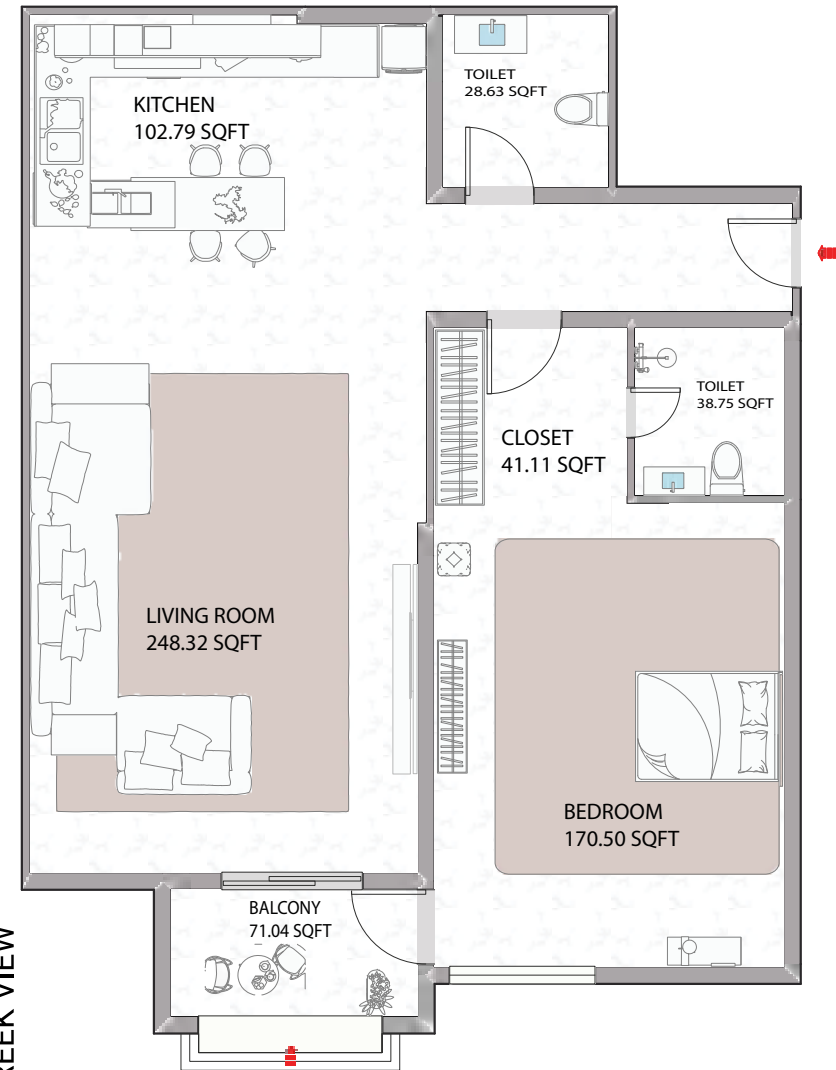
UNIT - 11

TOTAL AREA : 1137.60 SQ.FT



### Disclaimer:

1. All materials, finishes, dimensions and drawings are approximate.
2. Information is subject to change without notice.
3. Actual suite area may vary from the stated area.
4. Drawings are not to scale.
5. The Developer reserves the right to make revisions/alterations without any liability whatsoever.



CREEK VIEW

CREEK VIEW

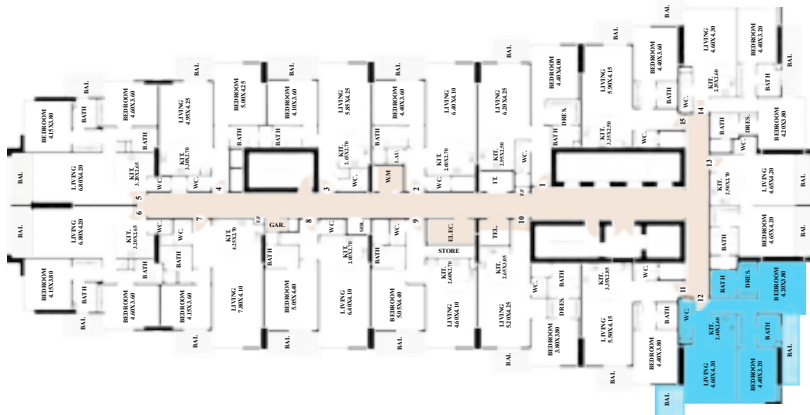
CITY MALL



# AJMAN CREEK TOWERS

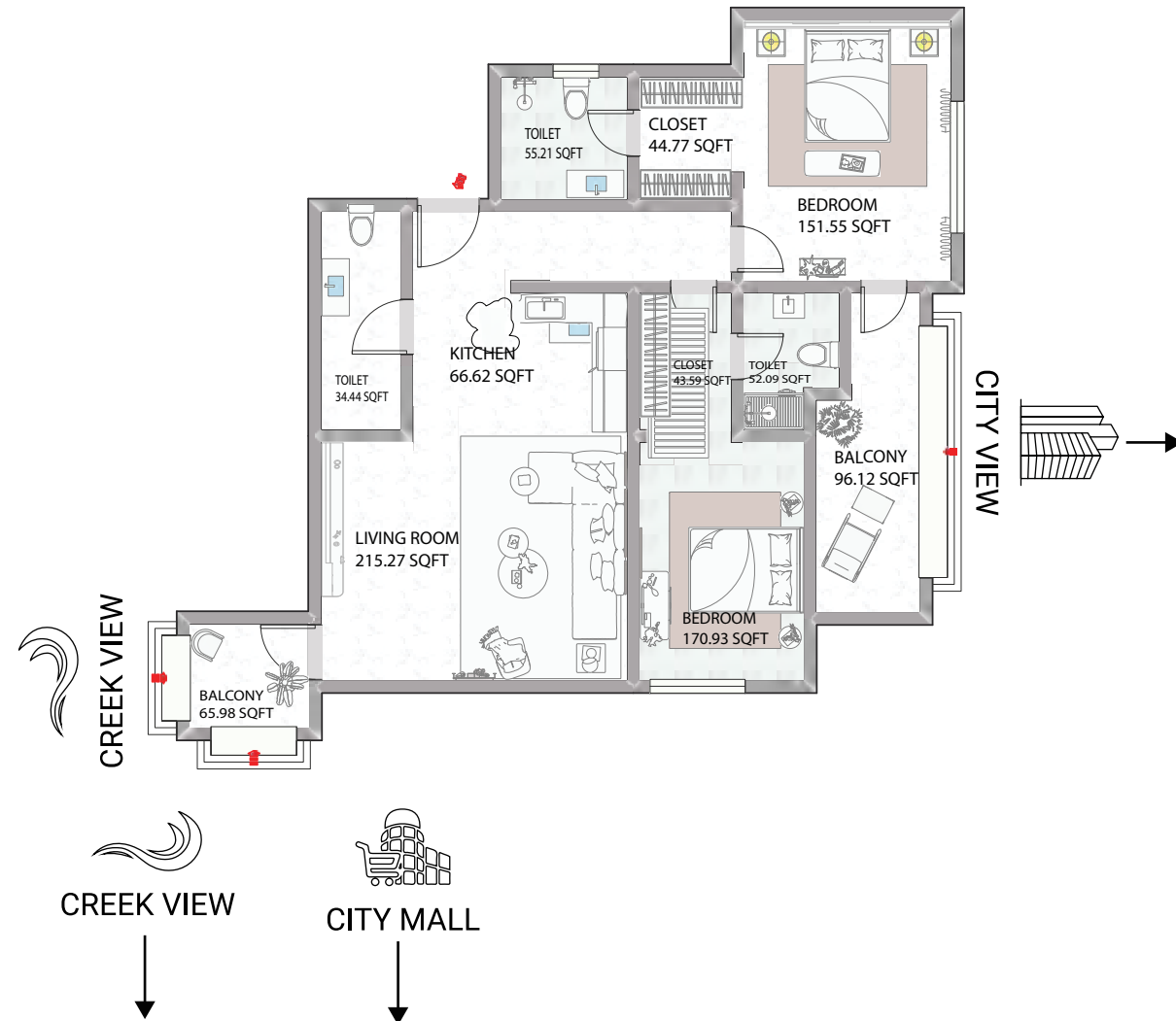
## APARTMENT 2 BEDROOMS

UNIT - 12  
TOTAL AREA : 1617.61 SQ.FT



### Disclaimer:

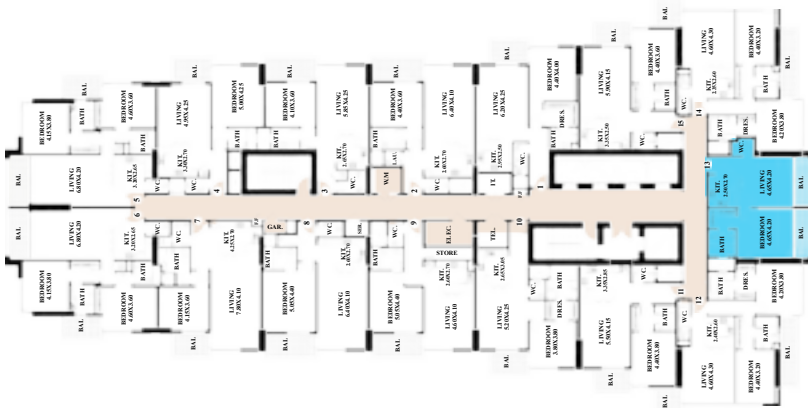
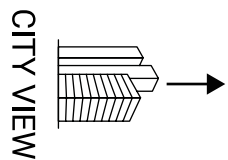
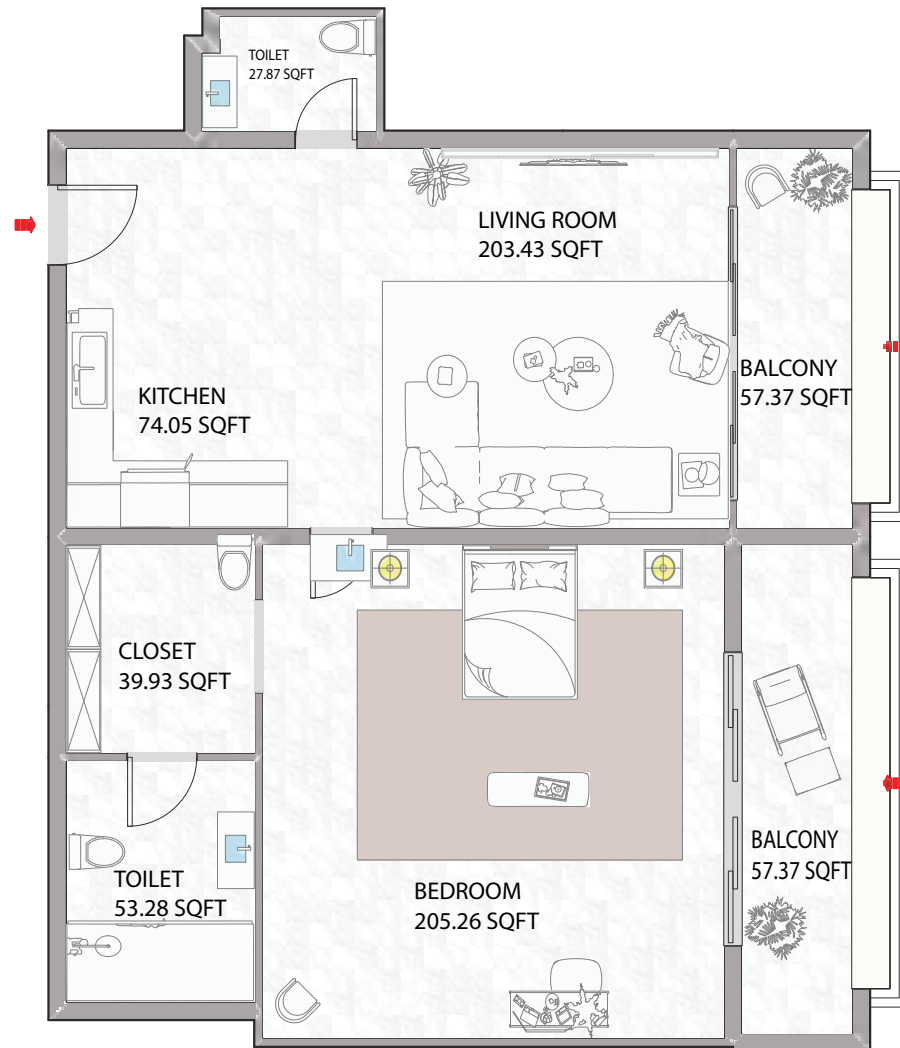
1. All materials, finishes, dimensions and drawings are approximate.
2. Information is subject to change without notice.
3. Actual suite area may vary from the stated area.
4. Drawings are not to scale.
5. The Developer reserves the right to make revisions/alterations without any liability whatsoever.



# AJMAN CREEK TOWERS

## APARTMENT 1 BEDROOM

UNIT - 13  
TOTAL AREA : 1088.16 SQ.FT



### Disclaimer:

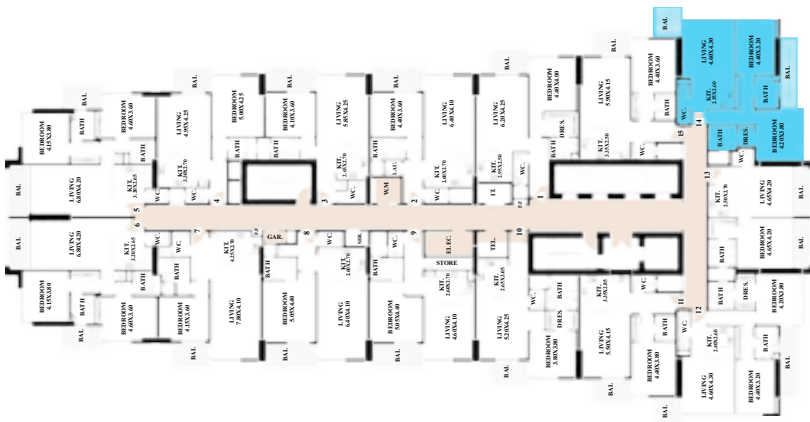
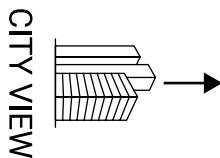
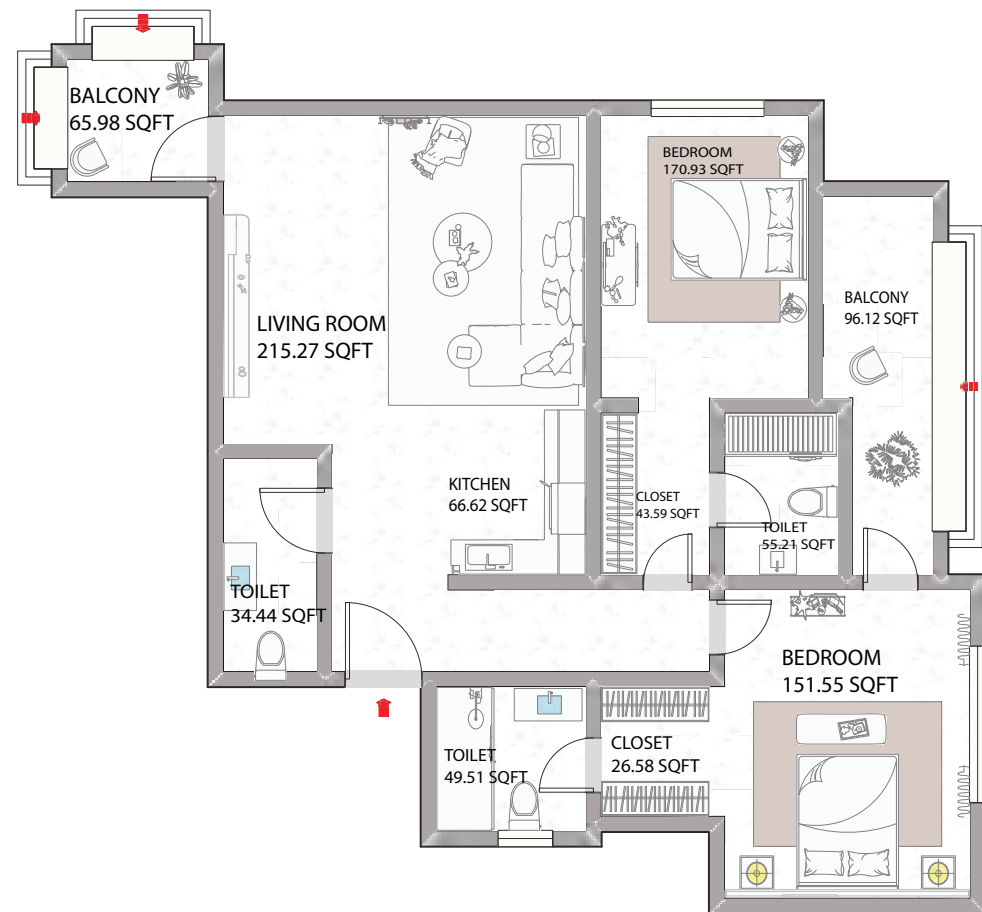
1. All materials, finishes, dimensions and drawings are approximate.
2. Information is subject to change without notice.
3. Actual suite area may vary from the stated area.
4. Drawings are not to scale.
5. The Developer reserves the right to make revisions/alterations without any liability whatsoever.

# AJMAN CREEK TOWERS

## APARTMENT 2 BEDROOMS

UNIT - 14

TOTAL AREA : 1581.52 SQ.FT



### Disclaimer:

1. All materials, finishes, dimensions and drawings are approximate.
2. Information is subject to change without notice.
3. Actual suite area may vary from the stated area.
4. Drawings are not to scale.
5. The Developer reserves the right to make revisions/alterations without any liability whatsoever.

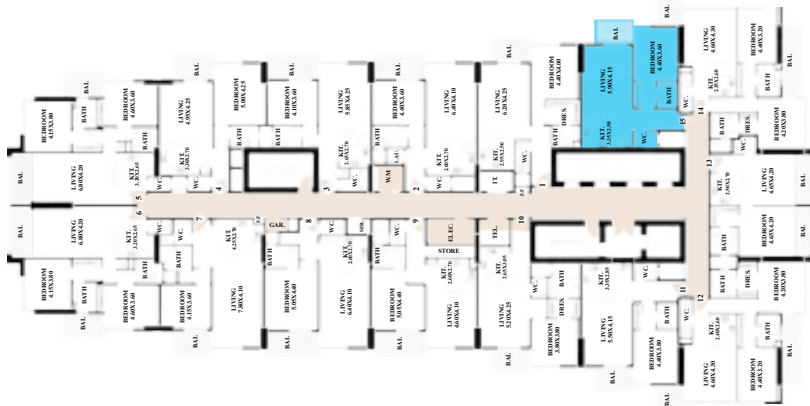


# AJMAN CREEK TOWERS

## APARTMENT 1 BEDROOM

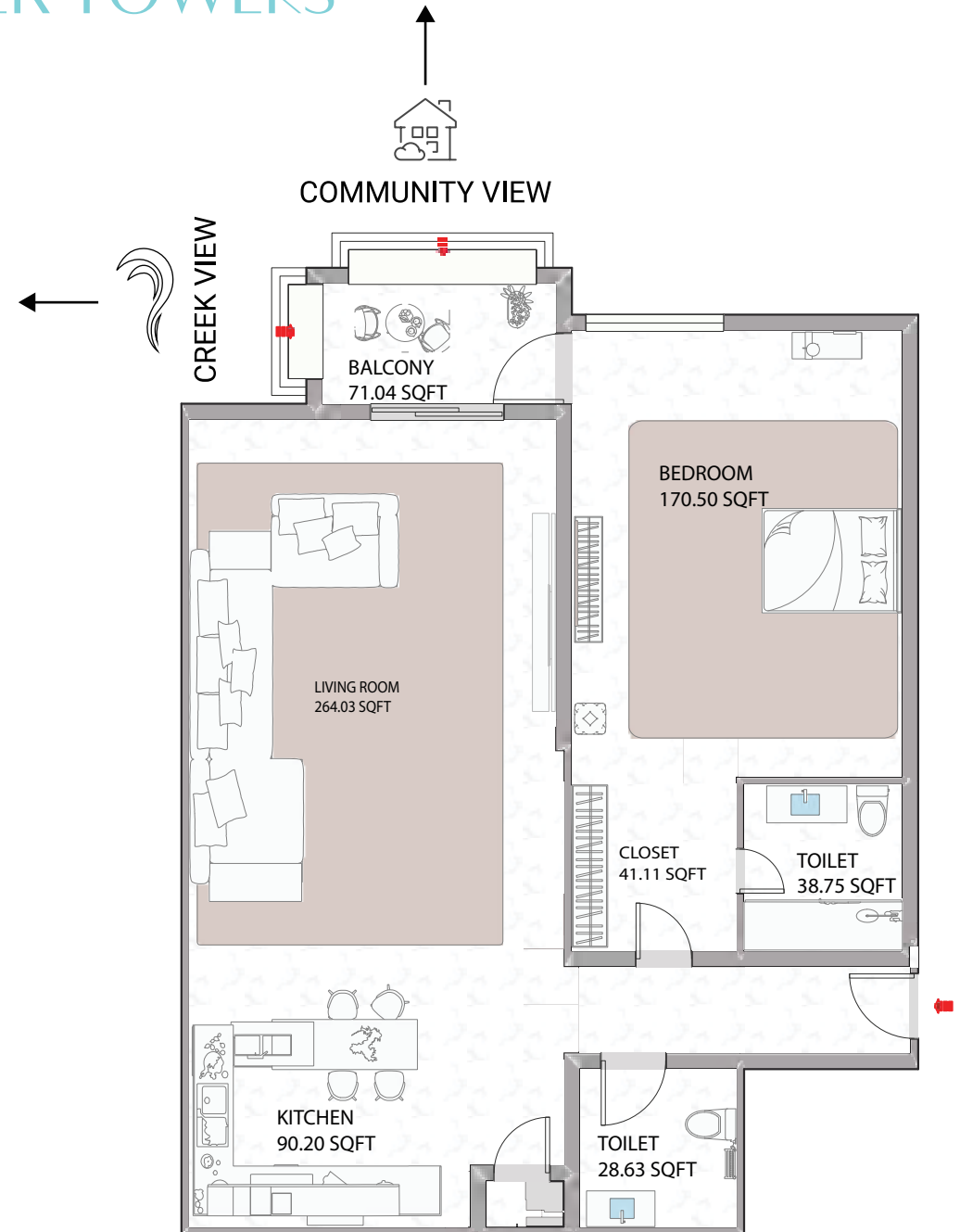
UNIT - 15

TOTAL AREA : 1136.74 SQ.FT



### Disclaimer:

1. All materials, finishes, dimensions and drawings are approximate.
2. Information is subject to change without notice.
3. Actual suite area may vary from the stated area.
4. Drawings are not to scale.
5. The Developer reserves the right to make revisions/alterations without any liability whatsoever.



AJMAN CREEK TOWERS

# TOWER 1

FLOOR 10 & 20

FLOOR PLANS



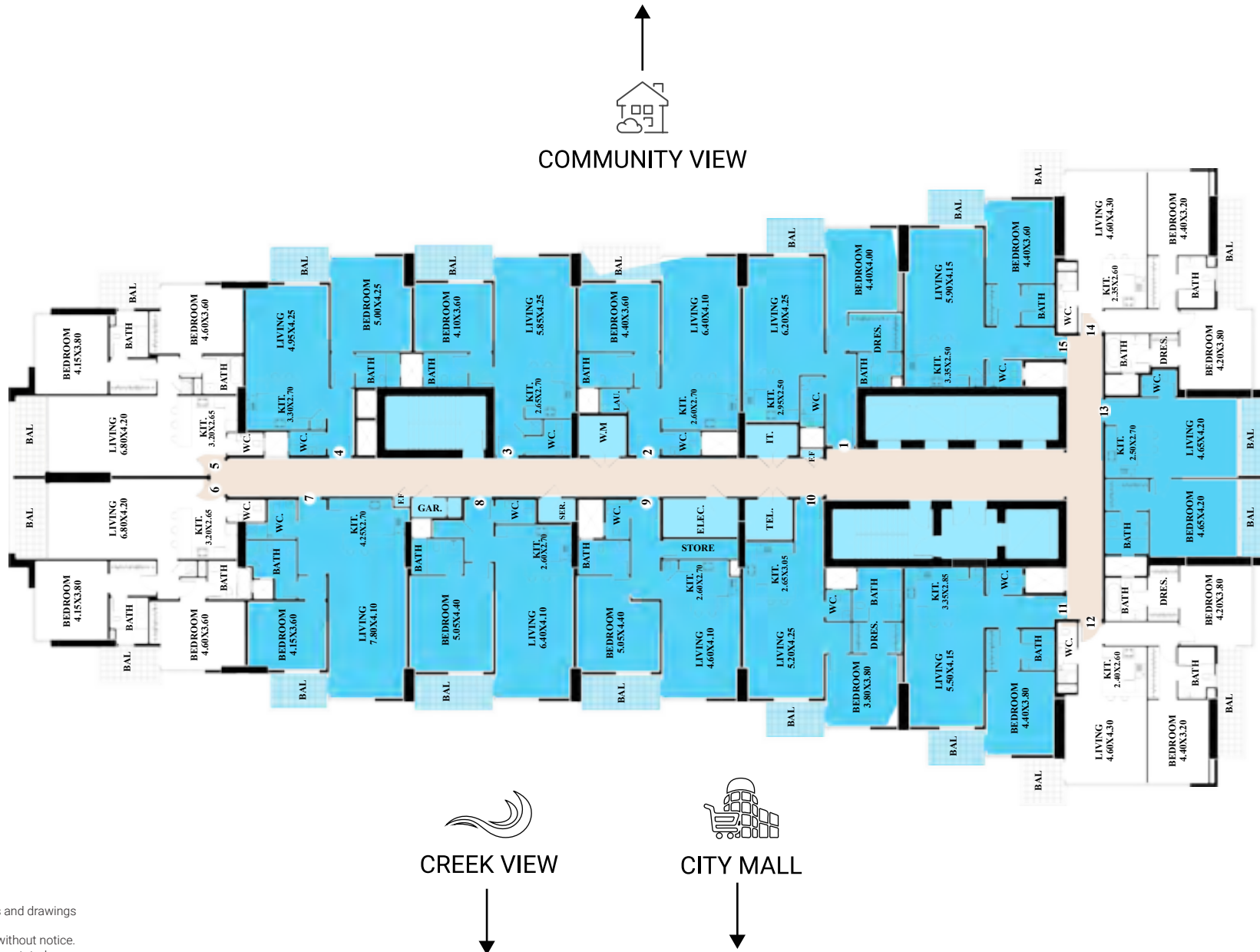








# MASTERPLAN



## Disclaimer:

1. All materials, finishes, dimensions and drawings are approximate.
2. Information is subject to change without notice.
3. Actual suite area may vary from the stated area.
4. Drawings are not to scale.
5. The Developer reserves the right to make revisions/alterations without any liability whatsoever.

# AJMAN CREEK TOWERS

## APARTMENT 1 BEDROOM

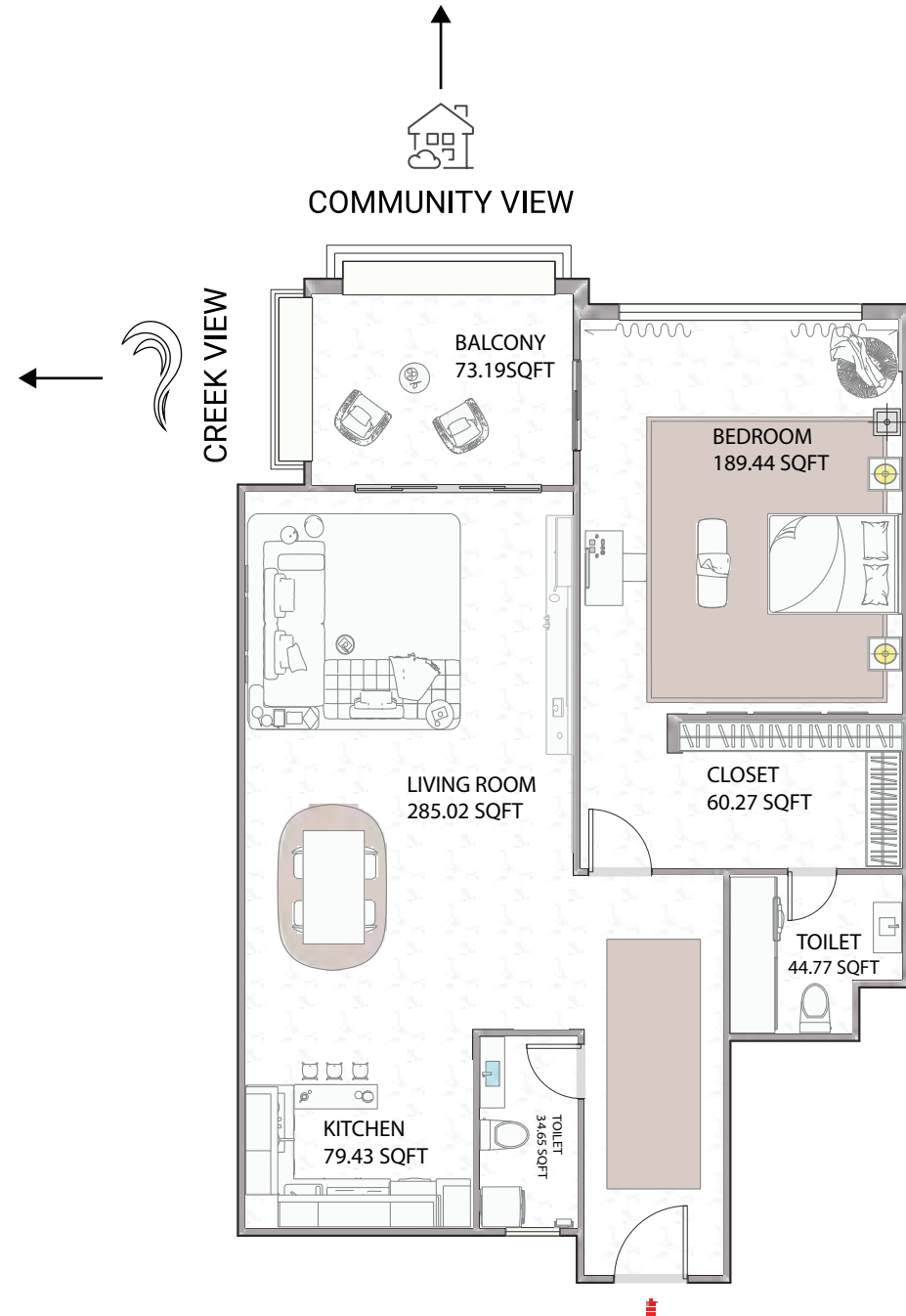
UNIT - 01

TOTAL AREA : 905.76 SQ.FT



### Disclaimer:

1. All materials, finishes, dimensions and drawings are approximate.
2. Information is subject to change without notice.
3. Actual suite area may vary from the stated area.
4. Drawings are not to scale.
5. The Developer reserves the right to make revisions/alterations without any liability whatsoever.



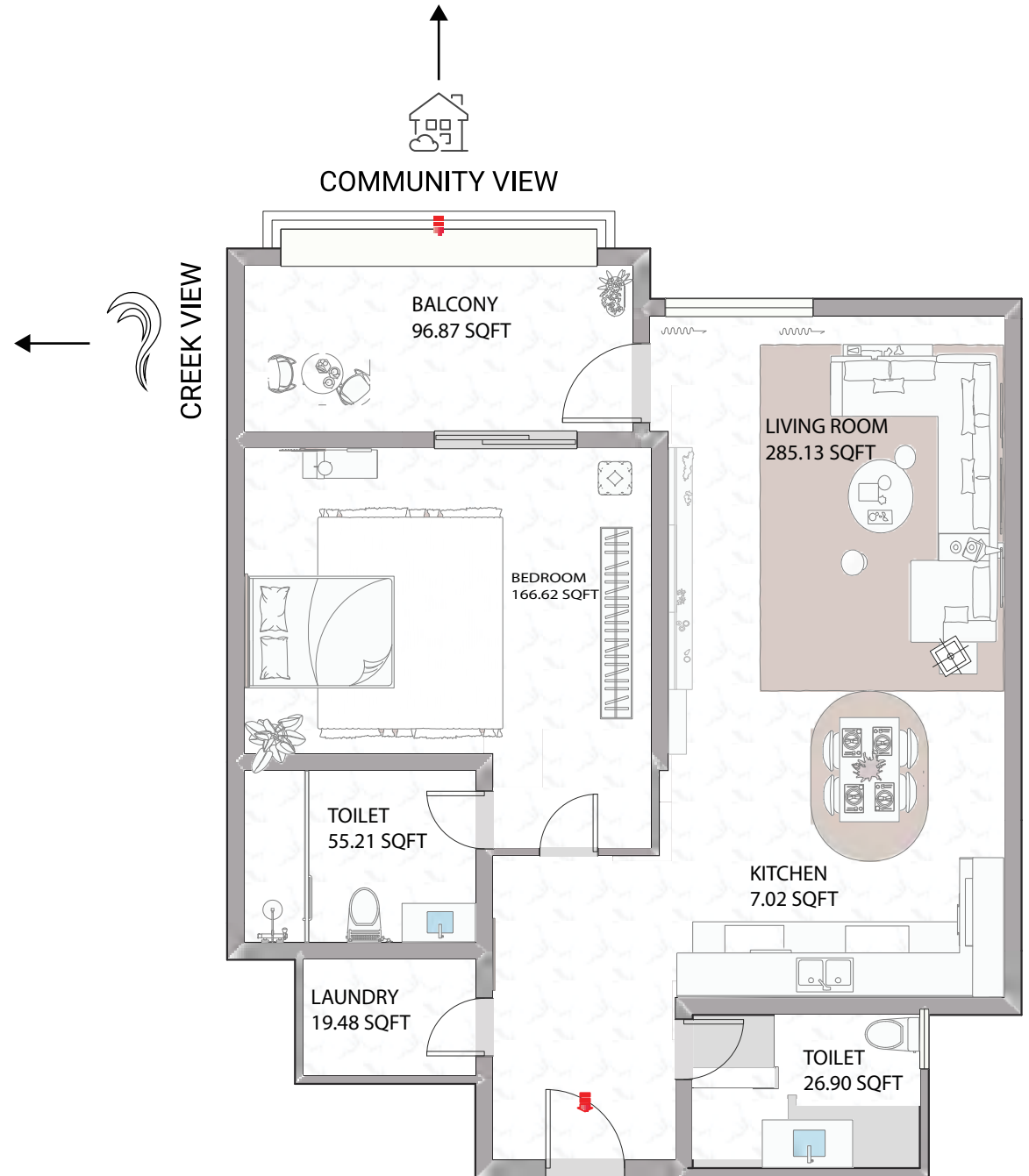


# AJMAN CREEK TOWERS

## APARTMENT 1 BEDROOM

UNIT - 02

TOTAL AREA : 1216.58 SQ.FT



#### Disclaimer:

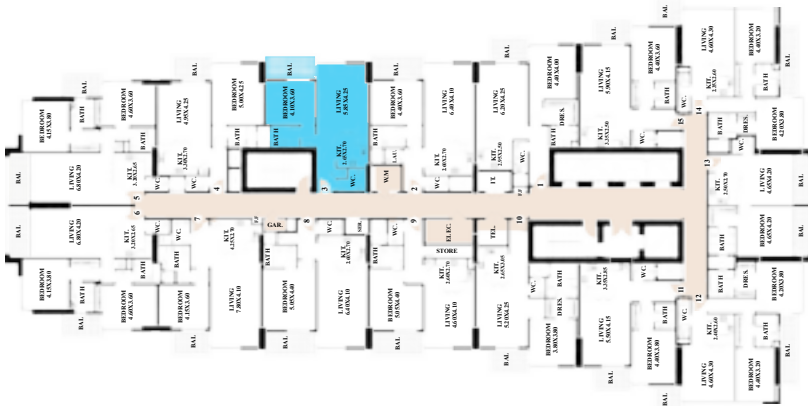
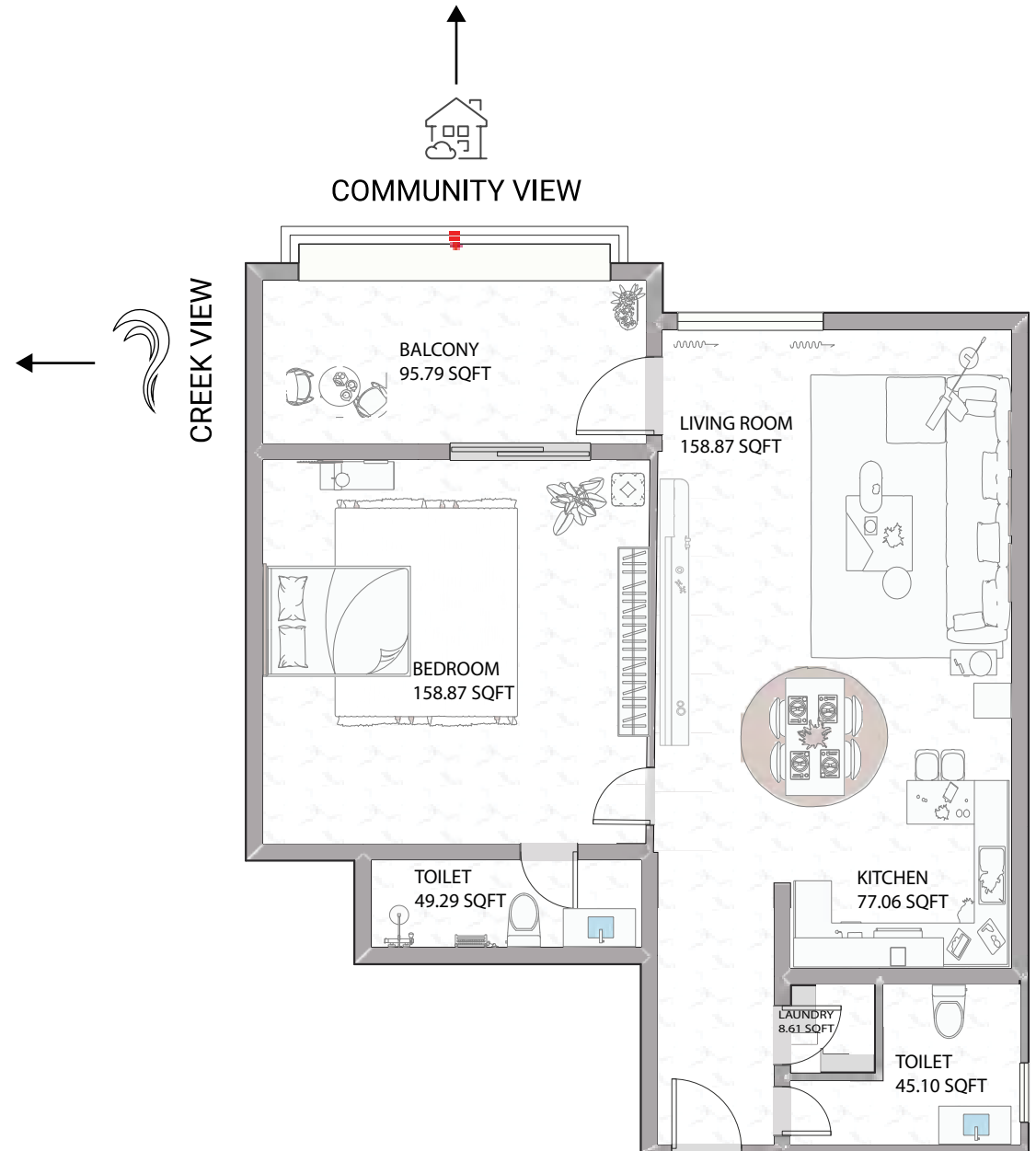
1. All materials, finishes, dimensions and drawings are approximate.
2. Information is subject to change without notice.
3. Actual suite area may vary from the stated area.
4. Drawings are not to scale.
5. The Developer reserves the right to make revisions/alterations without any liability whatsoever.

# AJMAN CREEK TOWERS

## APARTMENT 1 BEDROOM

UNIT - 03

TOTAL AREA : 1097.11 SQ.FT



### Disclaimer:

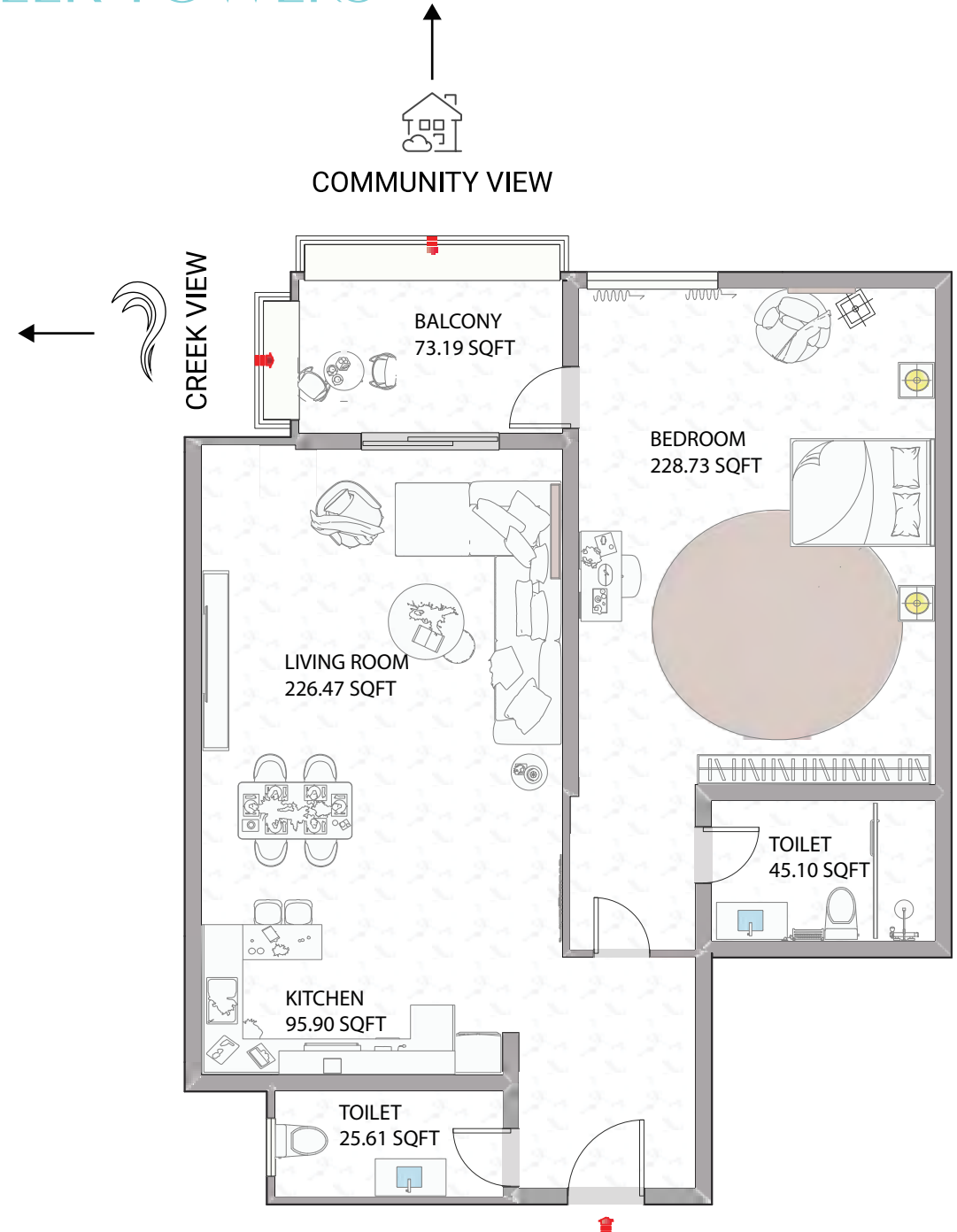
1. All materials, finishes, dimensions and drawings are approximate.
2. Information is subject to change without notice.
3. Actual suite area may vary from the stated area.
4. Drawings are not to scale.
5. The Developer reserves the right to make revisions/alterations without any liability whatsoever.

# AJMAN CREEK TOWERS

## APARTMENT 1 BEDROOM

UNIT - 04

TOTAL AREA : 1150.24 SQ.FT



### Disclaimer:

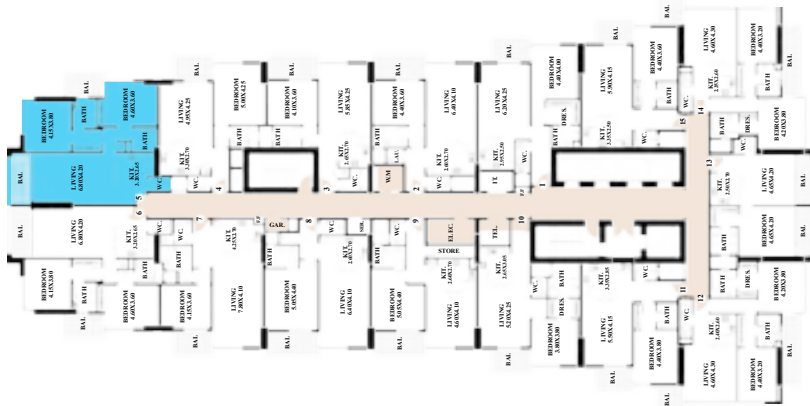
1. All materials, finishes, dimensions and drawings are approximate.
2. Information is subject to change without notice.
3. Actual suite area may vary from the stated area.
4. Drawings are not to scale.
5. The Developer reserves the right to make revisions/alterations without any liability whatsoever.



# AJMAN CREEK TOWERS

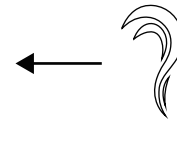
## APARTMENT 2 BEDROOMS

UNIT - 05  
TOTAL AREA : 1665.20 SQ.FT

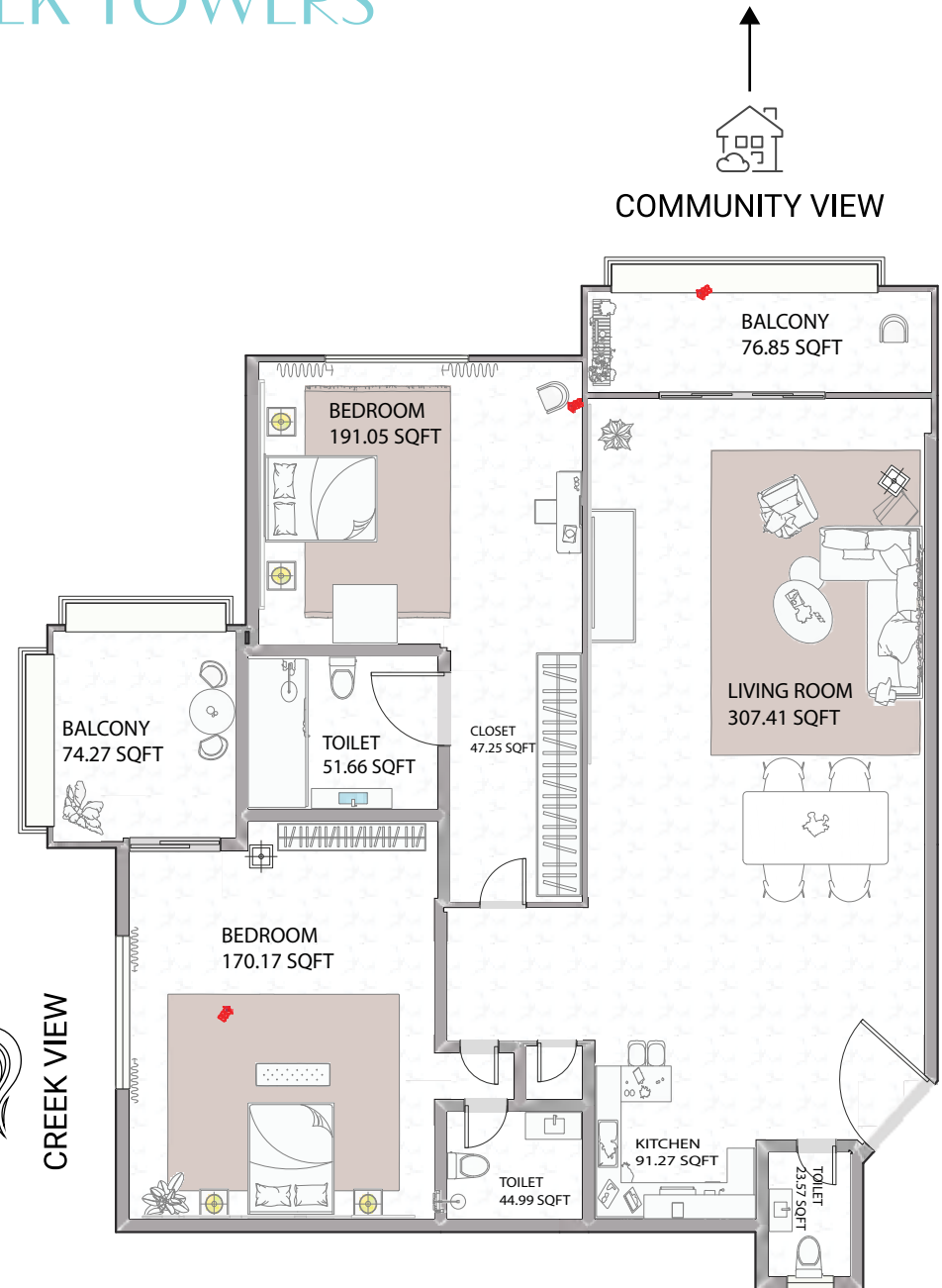


### Disclaimer:

1. All materials, finishes, dimensions and drawings are approximate.
2. Information is subject to change without notice.
3. Actual suite area may vary from the stated area.
4. Drawings are not to scale.
5. The Developer reserves the right to make revisions/alterations without any liability whatsoever.



CREEK VIEW

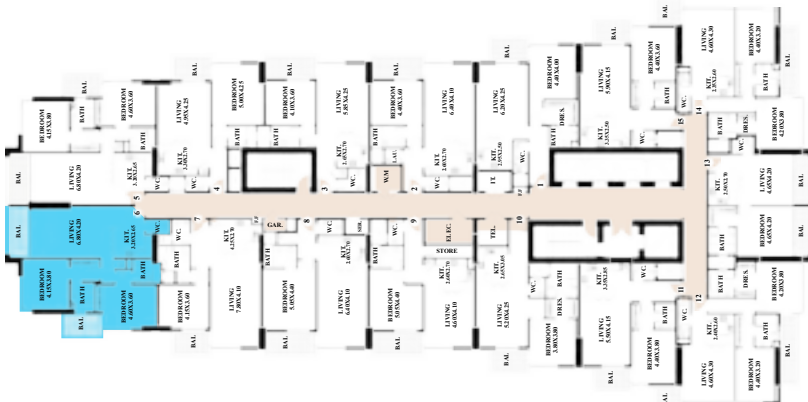
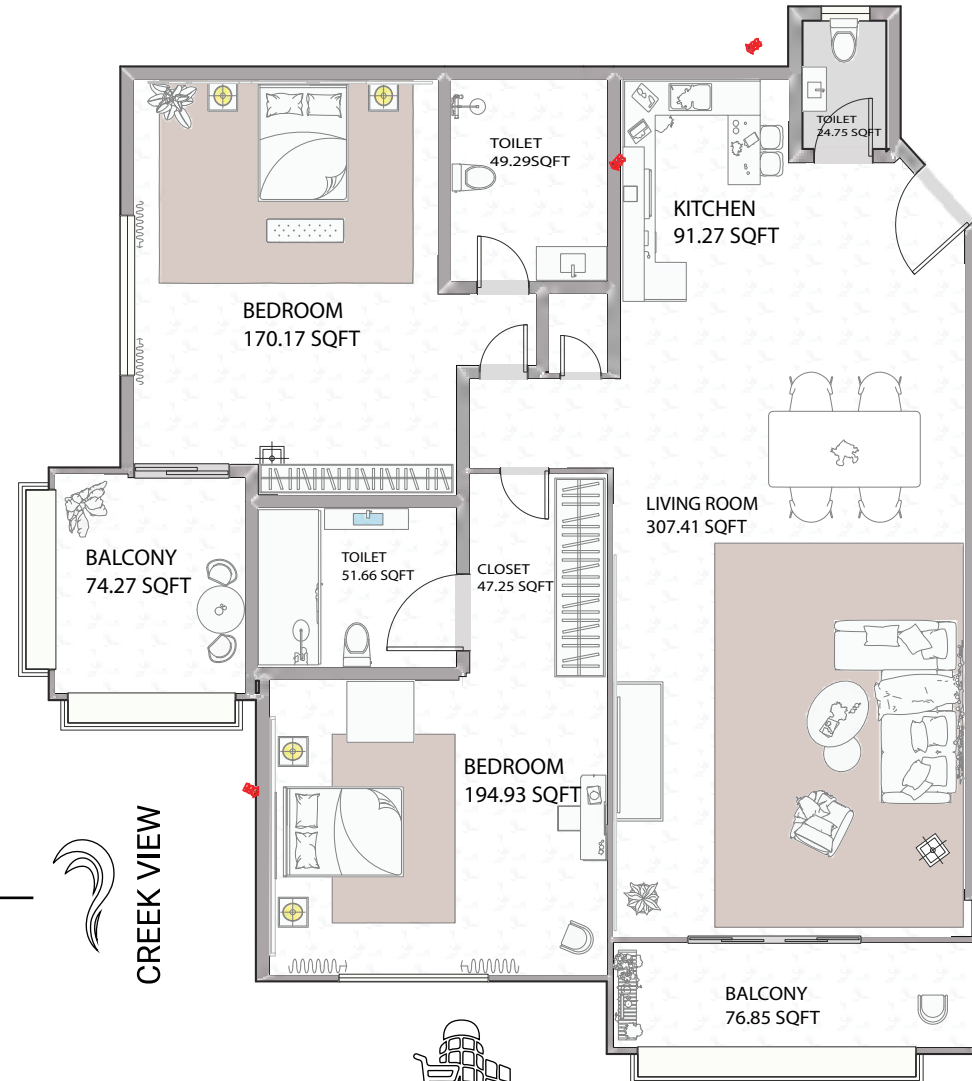


# AJMAN CREEK TOWERS

## APARTMENT 2 BEDROOMS

UNIT - 06

TOTAL AREA : 1682.24 SQ.FT



### Disclaimer:

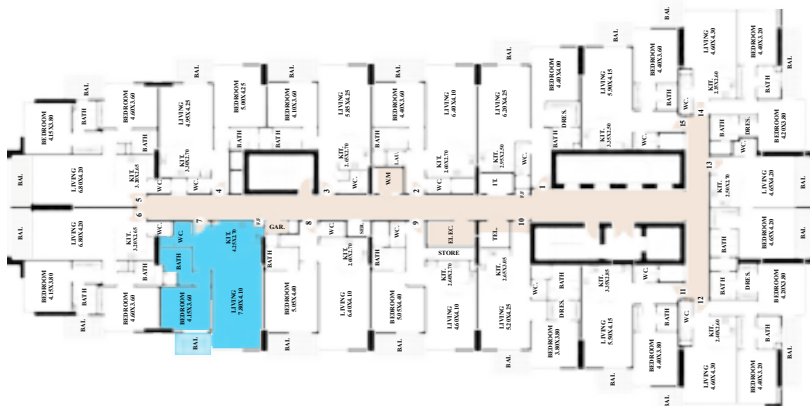
1. All materials, finishes, dimensions and drawings are approximate.
2. Information is subject to change without notice.
3. Actual suite area may vary from the stated area.
4. Drawings are not to scale.
5. The Developer reserves the right to make revisions/alterations without any liability whatsoever.

# AJMAN CREEK TOWERS

## APARTMENT 1 BEDROOM

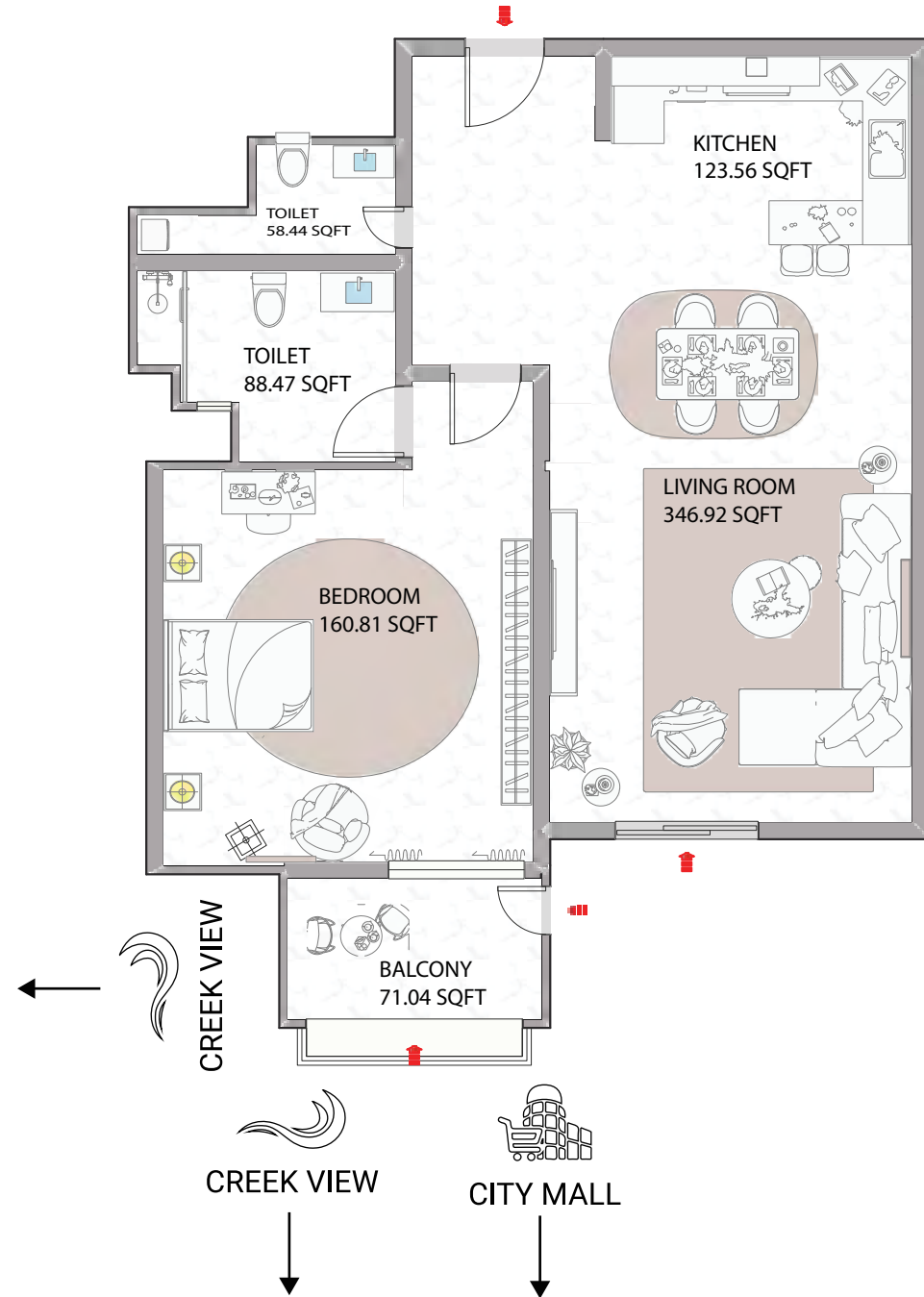
UNIT - 07

TOTAL AREA : 1270.42 SQ.FT



### Disclaimer:

1. All materials, finishes, dimensions and drawings are approximate.
2. Information is subject to change without notice.
3. Actual suite area may vary from the stated area.
4. Drawings are not to scale.
5. The Developer reserves the right to make revisions/alterations without any liability whatsoever.





# AJMAN CREEK TOWERS

## APARTMENT 1 BEDROOM

UNIT - 08

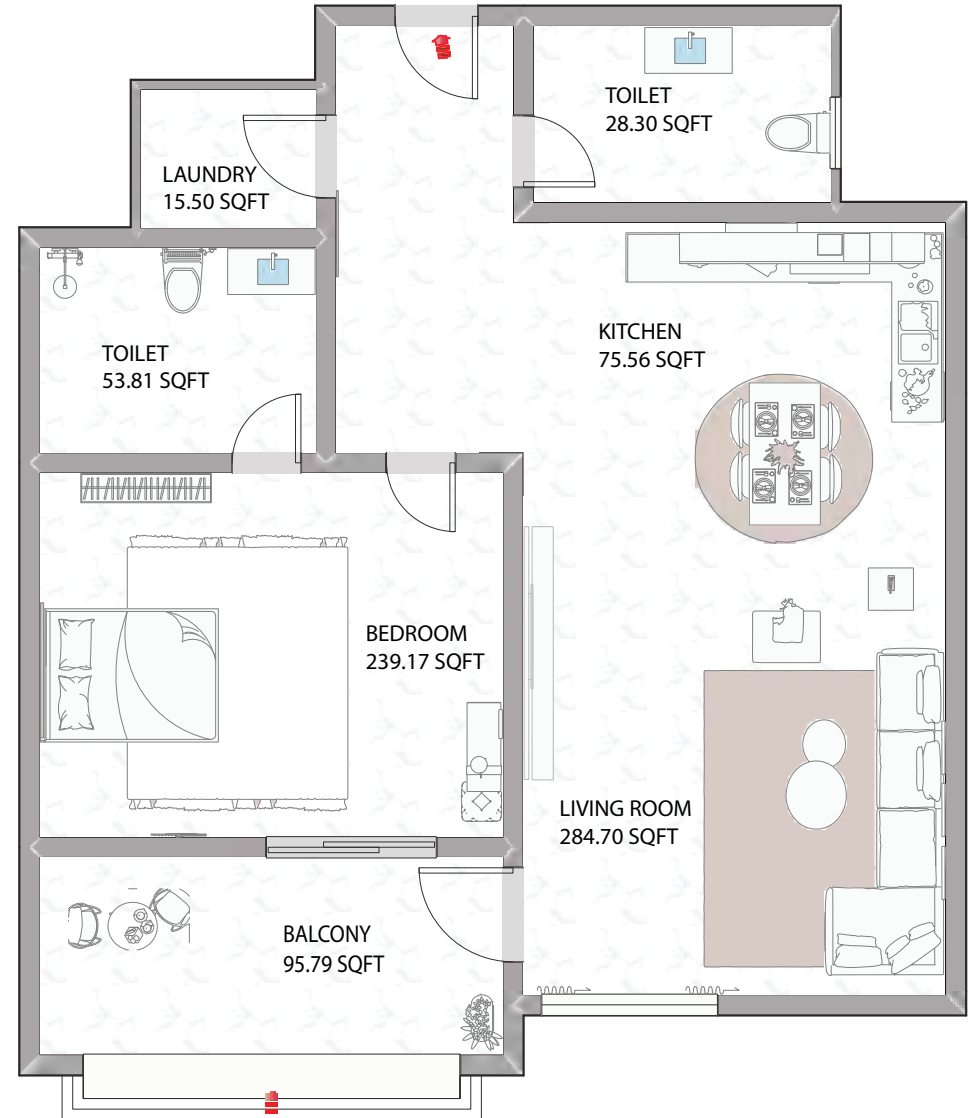
TOTAL AREA : 1274.96 SQ.FT



### Disclaimer:

1. All materials, finishes, dimensions and drawings are approximate.
2. Information is subject to change without notice.
3. Actual suite area may vary from the stated area.
4. Drawings are not to scale.
5. The Developer reserves the right to make revisions/alterations without any liability whatsoever.

CREEK VIEW



CREEK VIEW

CITY MALL

# AJMAN CREEK TOWERS

## APARTMENT 1 BEDROOM

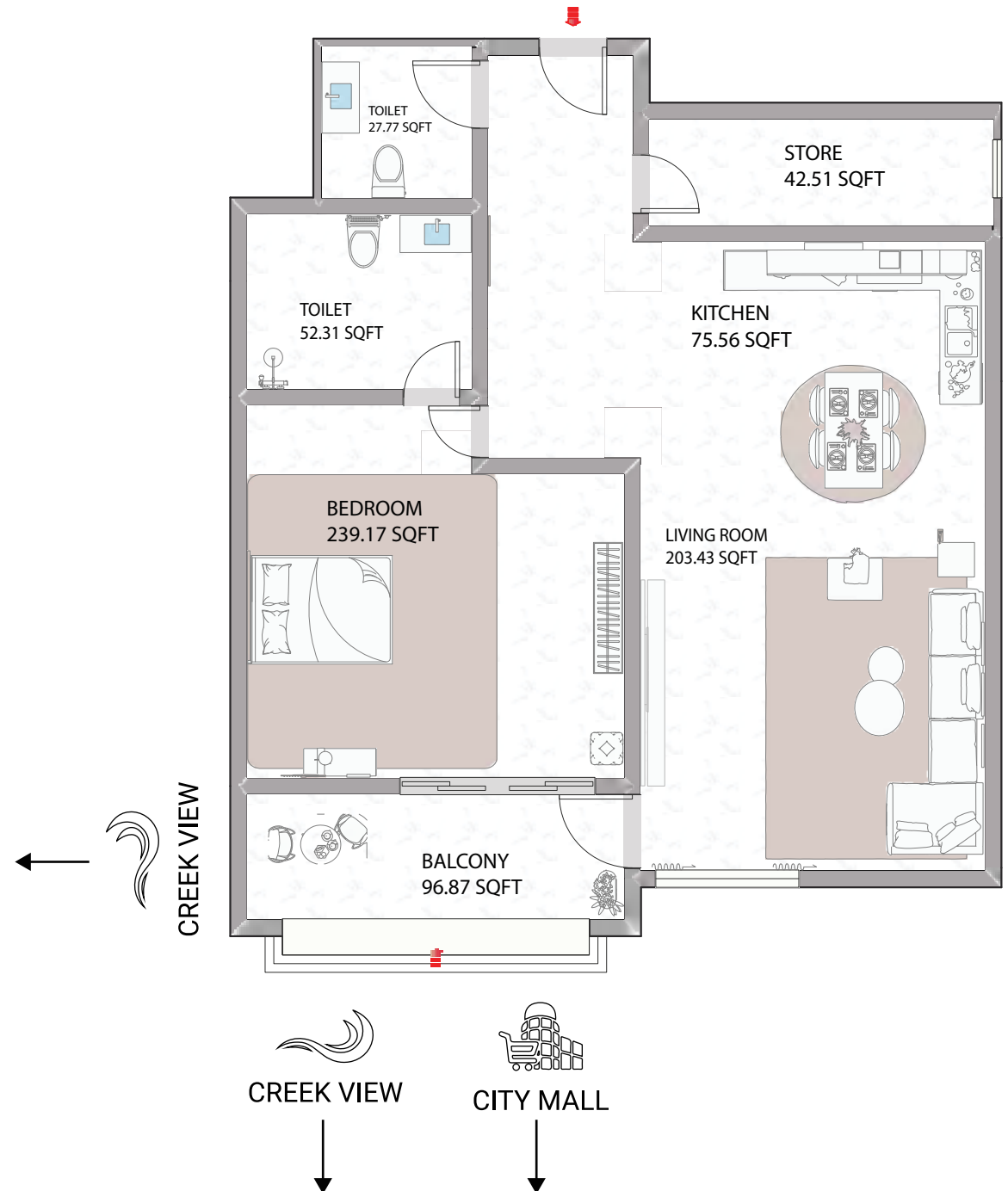
UNIT - 09

TOTAL AREA : 1187.74 SQ.FT



### Disclaimer:

1. All materials, finishes, dimensions and drawings are approximate.
2. Information is subject to change without notice.
3. Actual suite area may vary from the stated area.
4. Drawings are not to scale.
5. The Developer reserves the right to make revisions/alterations without any liability whatsoever.



# AJMAN CREEK TOWERS

## APARTMENT 1 BEDROOM

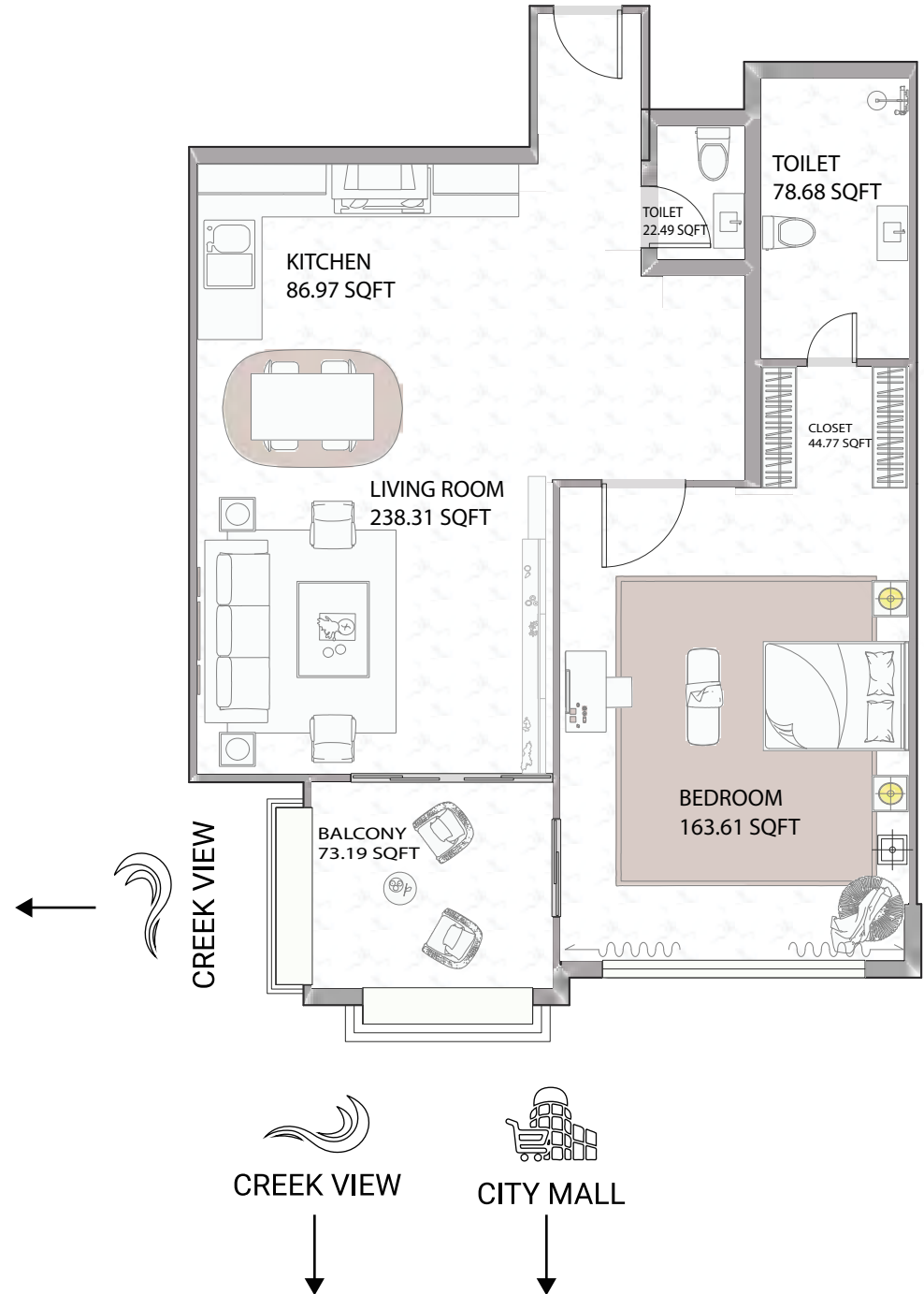
UNIT - 10

TOTAL AREA : 1147.82 SQ.FT



### Disclaimer:

1. All materials, finishes, dimensions and drawings are approximate.
2. Information is subject to change without notice.
3. Actual suite area may vary from the stated area.
4. Drawings are not to scale.
5. The Developer reserves the right to make revisions/alterations without any liability whatsoever.





# AJMAN CREEK TOWERS

## APARTMENT 1 BEDROOM

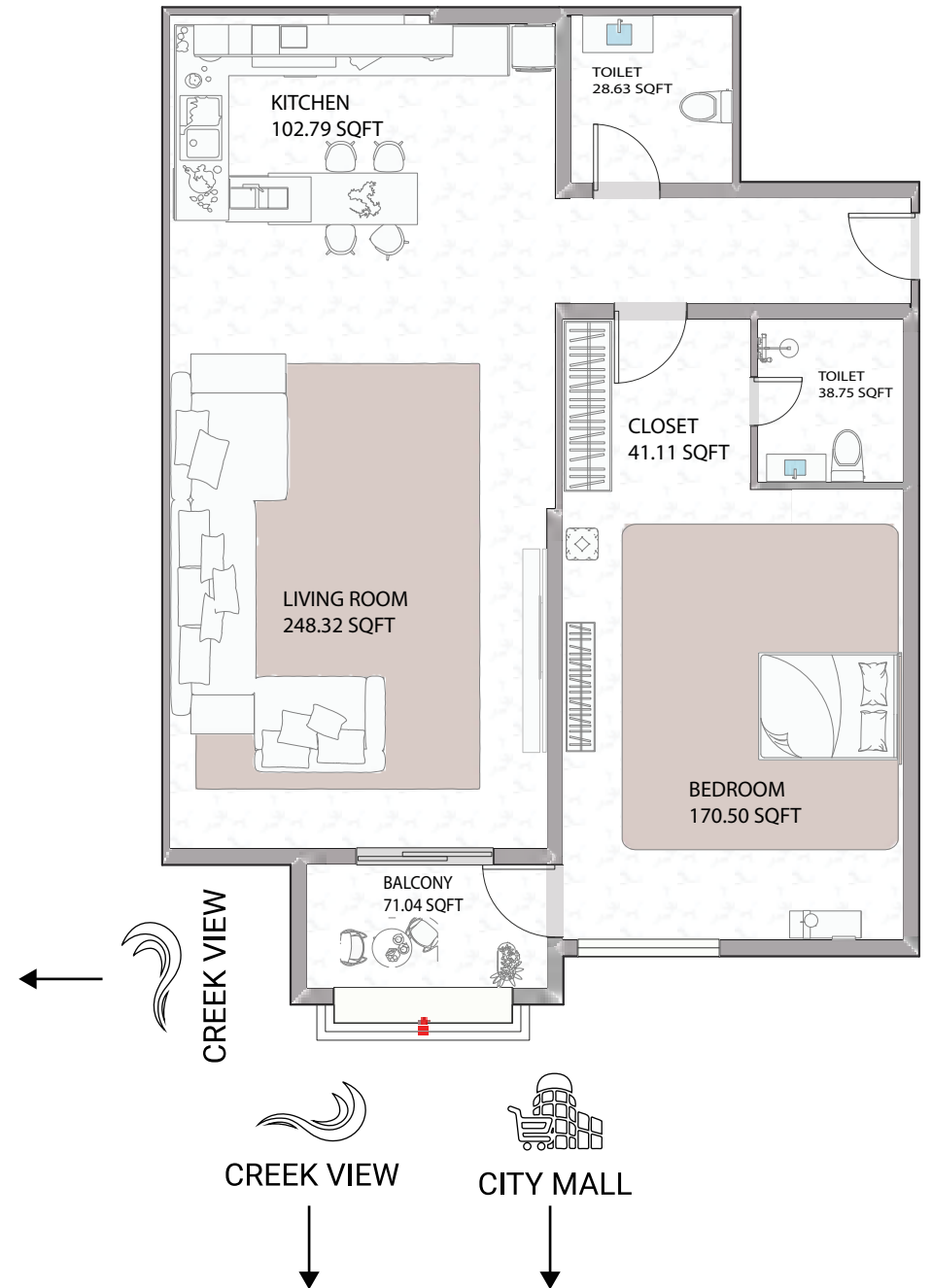
UNIT - 11

TOTAL AREA : 1137.60 SQ.FT



### Disclaimer:

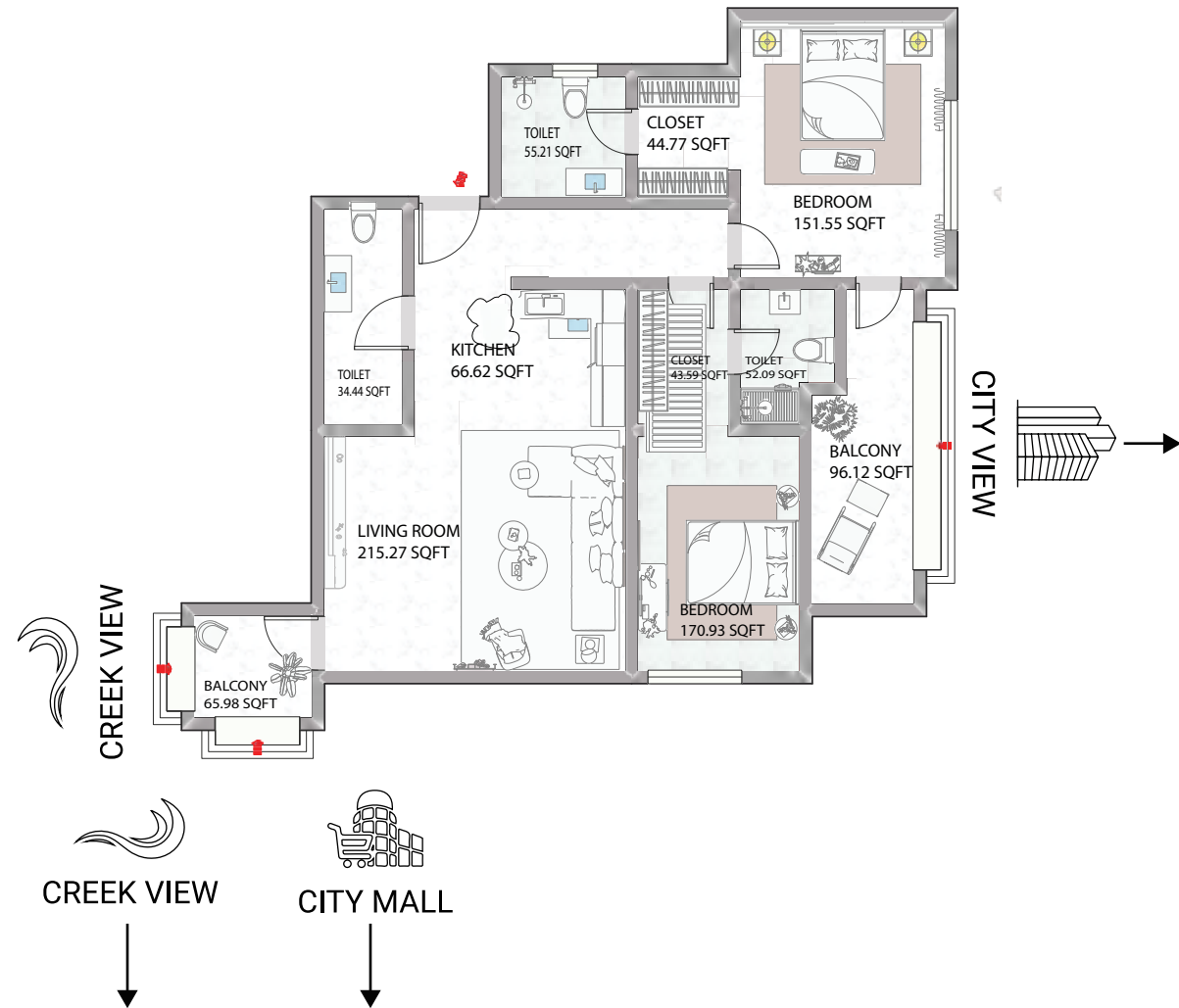
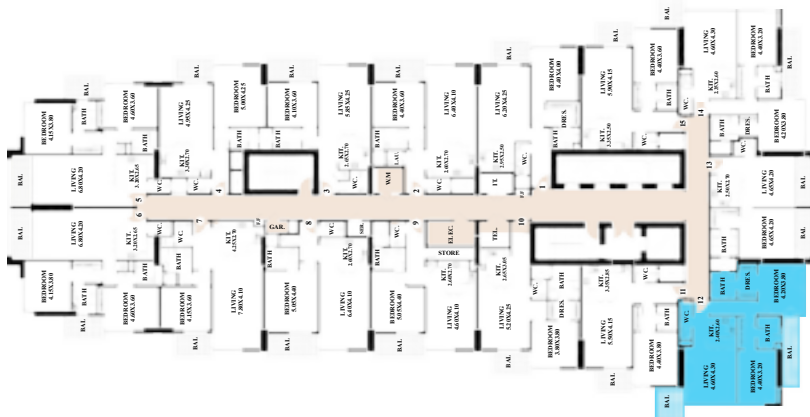
1. All materials, finishes, dimensions and drawings are approximate.
2. Information is subject to change without notice.
3. Actual suite area may vary from the stated area.
4. Drawings are not to scale.
5. The Developer reserves the right to make revisions/alterations without any liability whatsoever.



# AJMAN CREEK TOWERS

## APARTMENT 2 BEDROOMS

UNIT - 12  
TOTAL AREA : 1617.61 SQ.FT



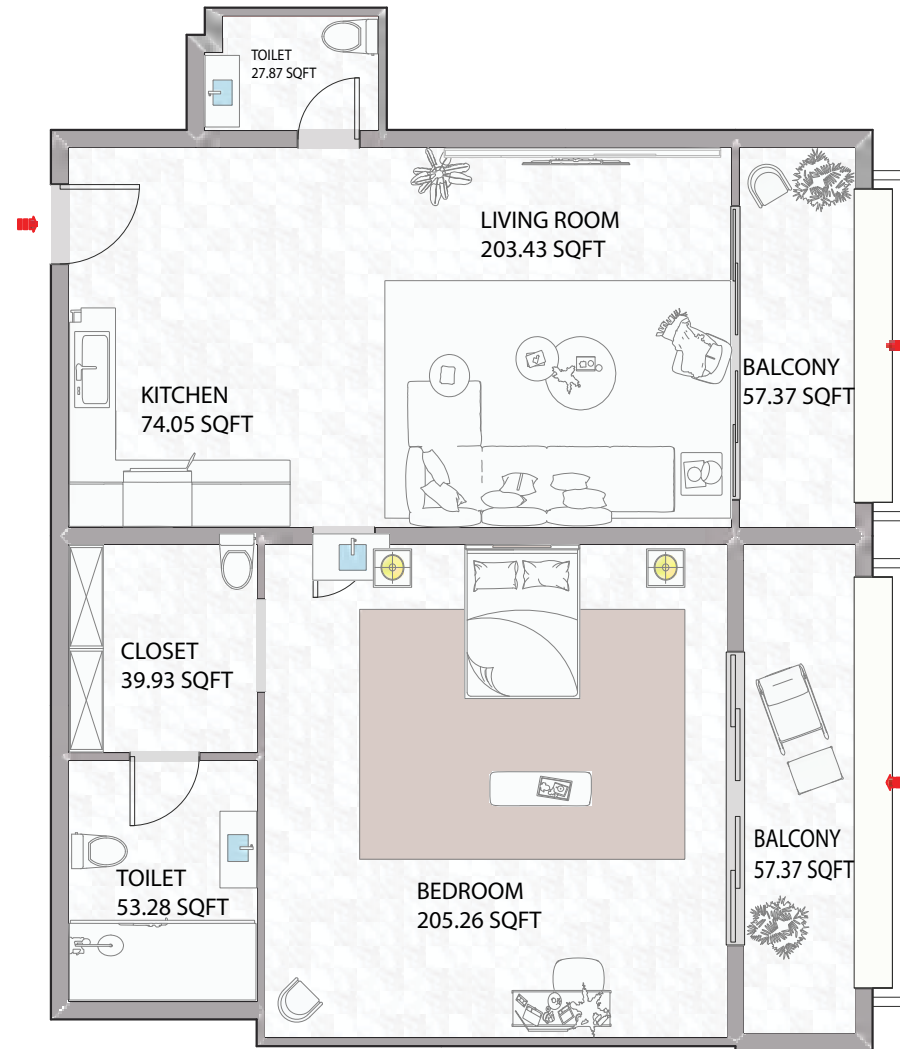
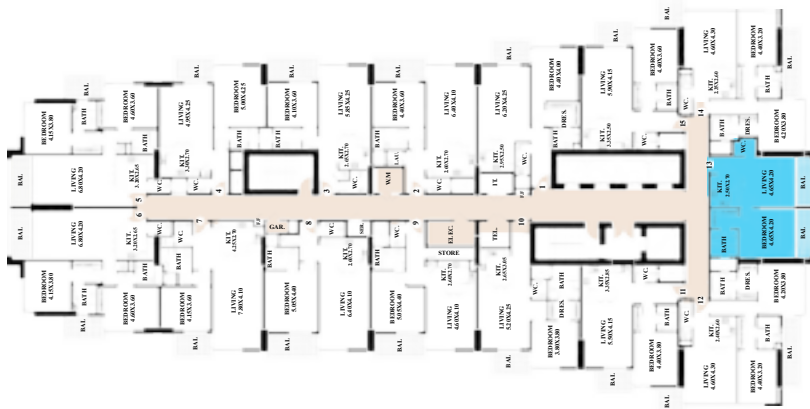
### Disclaimer:

1. All materials, finishes, dimensions and drawings are approximate.
2. Information is subject to change without notice.
3. Actual suite area may vary from the stated area.
4. Drawings are not to scale.
5. The Developer reserves the right to make revisions/alterations without any liability whatsoever.

# AJMAN CREEK TOWERS

## APARTMENT 1 BEDROOM

UNIT - 13  
TOTAL AREA : 1088.16 SQ.FT



### Disclaimer:

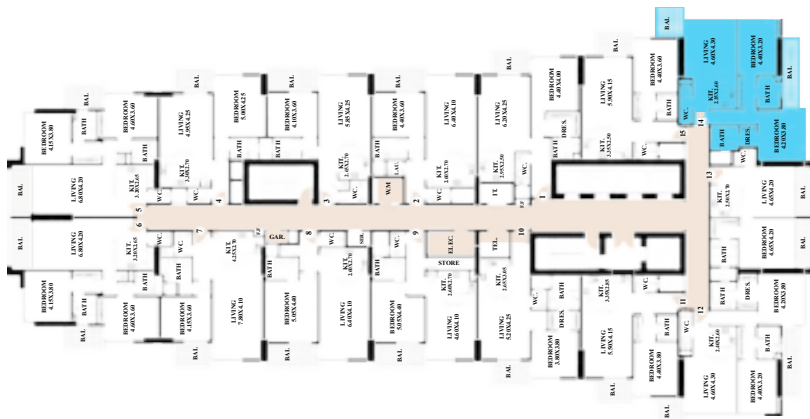
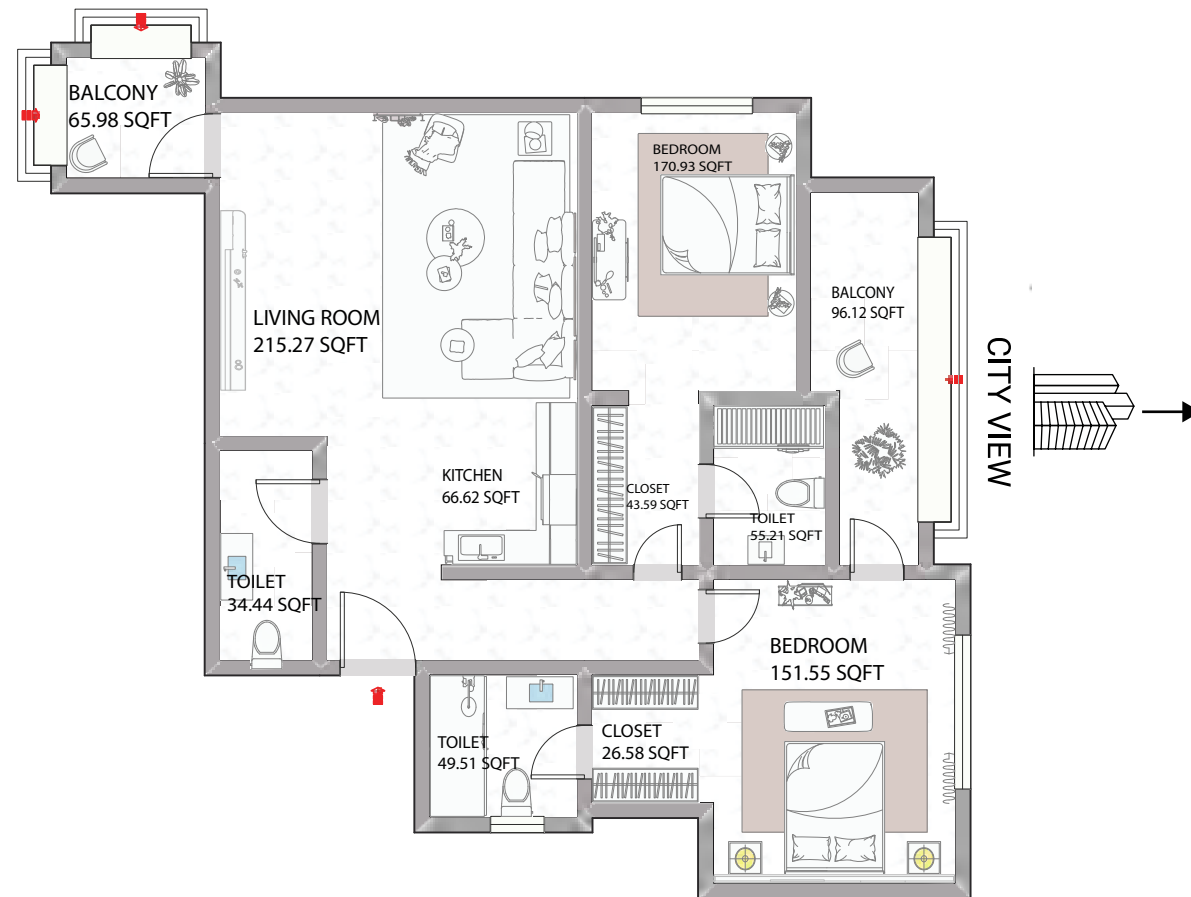
1. All materials, finishes, dimensions and drawings are approximate.
2. Information is subject to change without notice.
3. Actual suite area may vary from the stated area.
4. Drawings are not to scale.
5. The Developer reserves the right to make revisions/alterations without any liability whatsoever.



# AJMAN CREEK TOWERS

## APARTMENT 2 BEDROOMS

UNIT - 14  
TOTAL AREA : 1581.52 SQ.FT



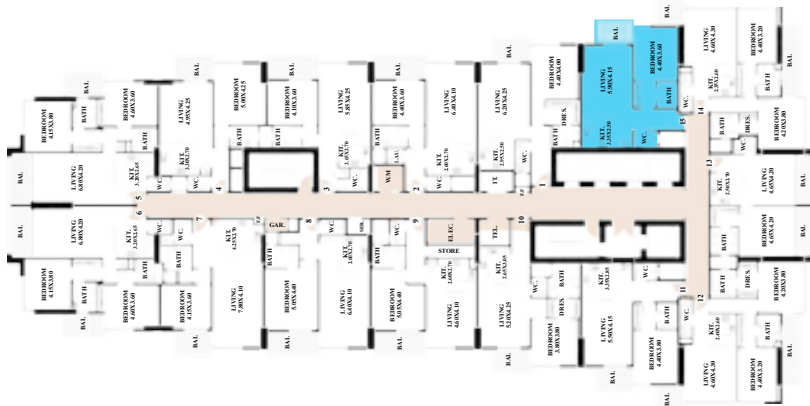
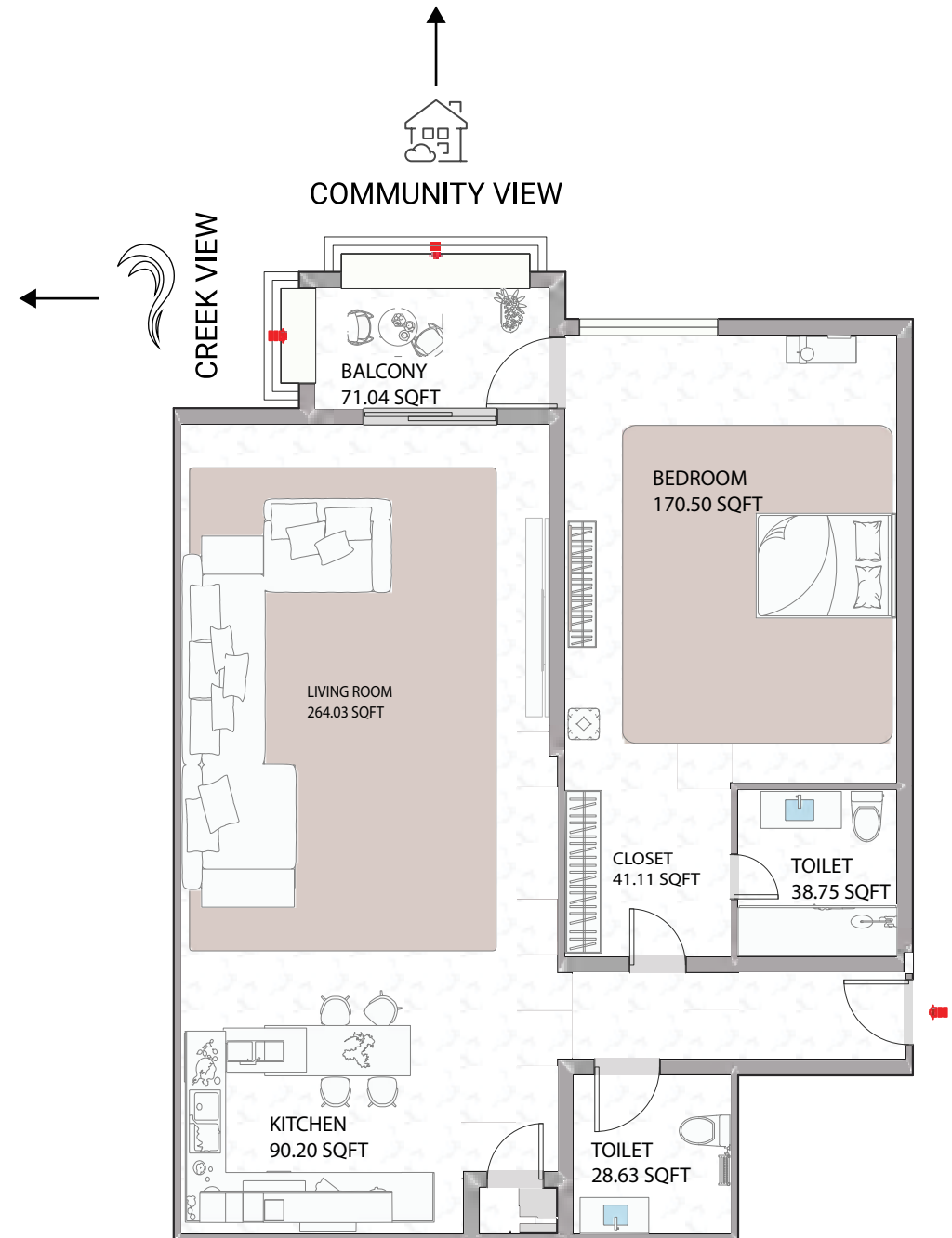
### Disclaimer:

1. All materials, finishes, dimensions and drawings are approximate.
2. Information is subject to change without notice.
3. Actual suite area may vary from the stated area.
4. Drawings are not to scale.
5. The Developer reserves the right to make revisions/alterations without any liability whatsoever.

# AJMAN CREEK TOWERS

## APARTMENT 1 BEDROOM

UNIT - 15  
TOTAL AREA : 1112.74 SQ.FT



### Disclaimer:

1. All materials, finishes, dimensions and drawings are approximate.
2. Information is subject to change without notice.
3. Actual suite area may vary from the stated area.
4. Drawings are not to scale.
5. The Developer reserves the right to make revisions/alterations without any liability whatsoever.



PROPERTIES

**Head Office:**

Ground Floor, Oasis Tower 2,  
Sheikh Rashid Bin Saeed Al Maktoum,  
Street Ajman, UAE

Phone: +971 6 741 4478

Toll Free: 800 GJAJM (45256)

Email: [info@gjrealstate.ae](mailto:info@gjrealstate.ae)

**Exclusive Sales Partner:**

16th Floor,  
Al Habtoor Business Tower,  
Dubai Marina, Dubai, UAE

Phone: +971 4 582 5999

Email : [Info@OBG.ae](mailto:Info@OBG.ae)