

AETERNITAS

PENTHOUSE & SKY MANSION
COLLECTION

BY

FRANCK MULLER
GENEVE





THE ARTIST

LONDON GATE
WORLD CLASS DEVELOPMENTS

FRANCK MULLER
AETERNITAS

THE MUSE

FRANCK MULLER
MASTER OF COMPLICATIONS

A collection of the
AETERNITAS PENTHOUSE & 3 SKY MANSIONS
starting at **400 meters** in the sky.

From floors 102 to 105

- SKY MANSIONS - 7,382 sqft up to 7,889 sqft.
- AETERNITAS PENTHOUSE - 8,582 sqft.



An aerial, high-angle view of a city skyline, likely Dubai, featuring numerous skyscrapers and a large Ferris wheel in the distance. The image is dimmed to serve as a background for the text.

FRANCK MULLER

GENEVE

SPECIFICATIONS



LUXURY INTERIORS

The residences at Franck Muller Aeternitas Tower Living showcase interiors that project luxury and welcoming atmosphere. The use of carefully selected high-quality materials and finishes creates touch of heavenly living space. Kitchens and bathrooms feature European natural Marble stone, while attention to detail can be seen throughout every aspect of the residence and the innovative space management.

Chandelier: **Swarovski**



MATERIALS & FINISHES

- FLOORING**
European Natural Marble & travertine Marble
800mm* 800mm / 1200mm * 600mm
- WALL PAINT**
Jotun
Comfortable White
- DECORATION PAINT**
Textured Paint
RAL 9010
- WALLS**
Marble Mosaic
Natural
- WOODEN DECORATION**
Walnut
Natural



KITCHEN

The kitchen spaces at Franck Muller Aeternitas Tower have been designed to be highly functional and durable, while providing the desired luxury and class. High-quality materials and equipment have been selected to create smart storage spaces and luxurious countertops, with finishes that enhance the aesthetic value as well as their functional use.

Kitchen Sink mixer : **Villeroy & Boch**



Brand of built-in appliances: **Bosch**

Appliance: **Built-in Fridge**
Energy Efficiency: **A++**

Appliance: **Built-in Stove hood**

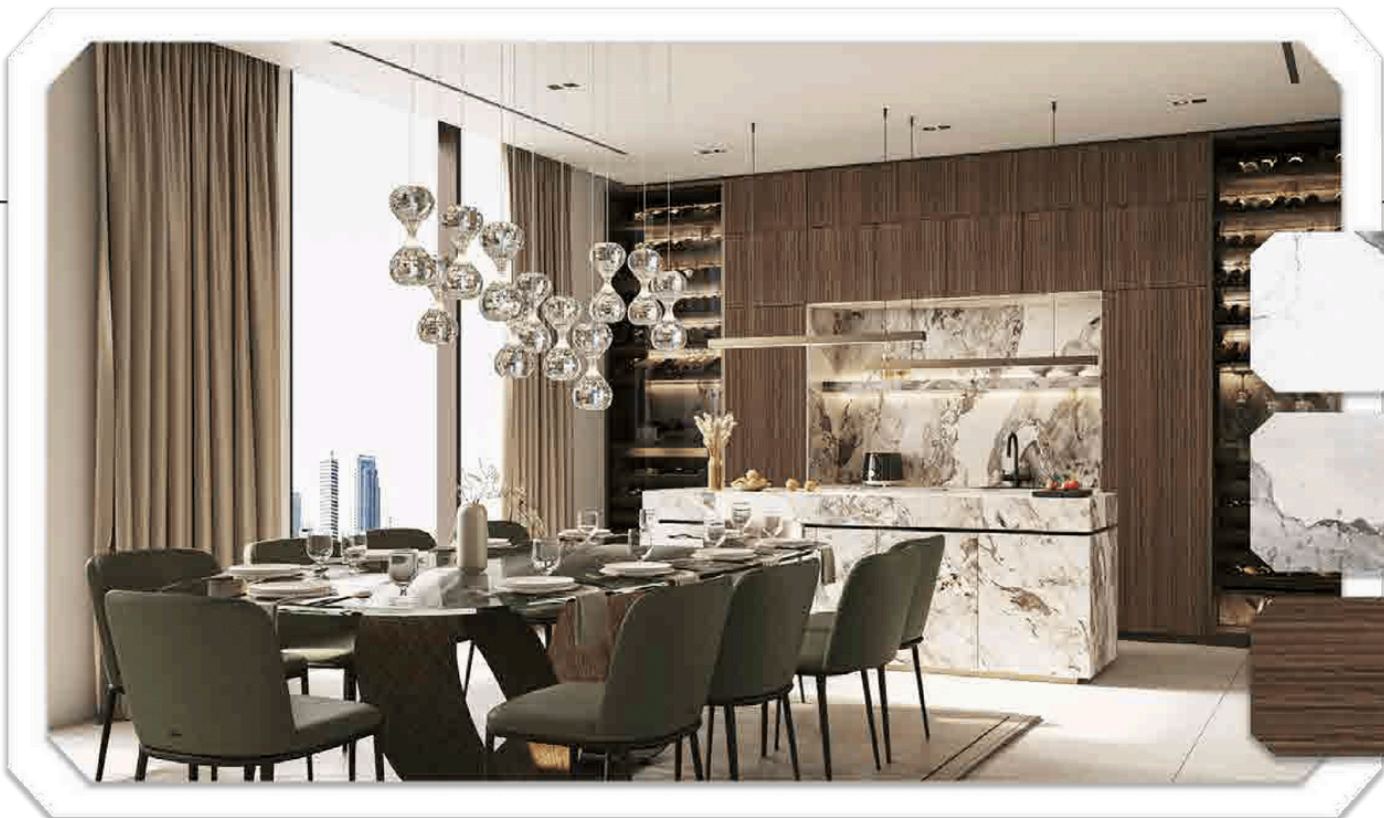
Appliance: **Built-in Electric Stove**

Appliance: **Built-in Electric Oven**

Appliance: **Built-in Microwave**



BOSCH



MATERIALS & FINISHES

- FLOORING**
European Natural Marble & travertine Marble
800mm* 800mm / 1200mm * 600mm
- COUNTER**
Reconstituted Stone.
Matt
- JOINERY**
Solid Wood & PU
Matt

LUXURY BATHROOM

The selection of materials, finishes, and fittings used in the bathrooms transforms a functional space into an oasis of well-being. From the taps to accessories, all have been sourced from **Villeroy & Boch**, a name with a worldwide reputation for High quality, innovation and , luxury.

Sanitary ware accessories: **Villeroy & Boch**



MATERIALS & FINISHES

FLOORING

European Natural Marble & Travertine Marble
Natural

COUNTER

Reconstituted Stone,
Matt

WALLS

European Natural Marble & Travertine Marble
Natural

COMMON AREAS

The architect's Allure is clearly present in the details of the common areas.
The luxurious touch enhances the appearance of the corridors and entryways.
The elegant use of the marvelous natural marbles complements design's ingenuity creating a sense luxury, safety and subtle sophistication.

Main door apartments : **Solid wood / Walnut / Natural**



MATERIALS & FINISHES

FLOORING

European Natural Marble
Natural

WALLS

European Natural Marble
Natural

DECORATION

French brushed gold

Exteriors

Schüco / Gutmann Aluminium window systems

WORLD CLASS AMENITIES

Padel Tennis
In-house Chef
24/7 Valet
Cigar Lounge

Cinema
Branded Concierge
The London Spa
Sauna Rooms



AETERNITAS

SKY MANSION FLOORPLAN



FRANCK MULLER

AETERNITAS TOWER BY LONDON GATE

5 BEDROOM DUPLEX

SUITE 102-01

102/103

SUITE AREA	685.84 SQ.M	7382.32 SQ.FT
TERRACE AREA	0.00 SQ.M	0.00 SQ.FT
TOTAL AREA	685.84 SQ.M	7382.32 SQ.FT

KEY PLAN

MARINA WALK

PALM JUMEIRAH DIRECTION

MEDIA CITY

DUBAI SKYLINE & EMIRATES GOLF

ROAD



FRANCK MULLER

AETERNITAS TOWER

BY LONDON GATE

5 BEDROOM DUPLEX

SUITE 102-01

102/103

SUITE AREA	685.84 SQ.M	7382.32 SQ.FT
TERRACE AREA	0 SQ.M	0 SQ.FT
TOTAL AREA	685.84 SQ.M	7382.32 SQ.FT

KEY PLAN

MARINA WALK

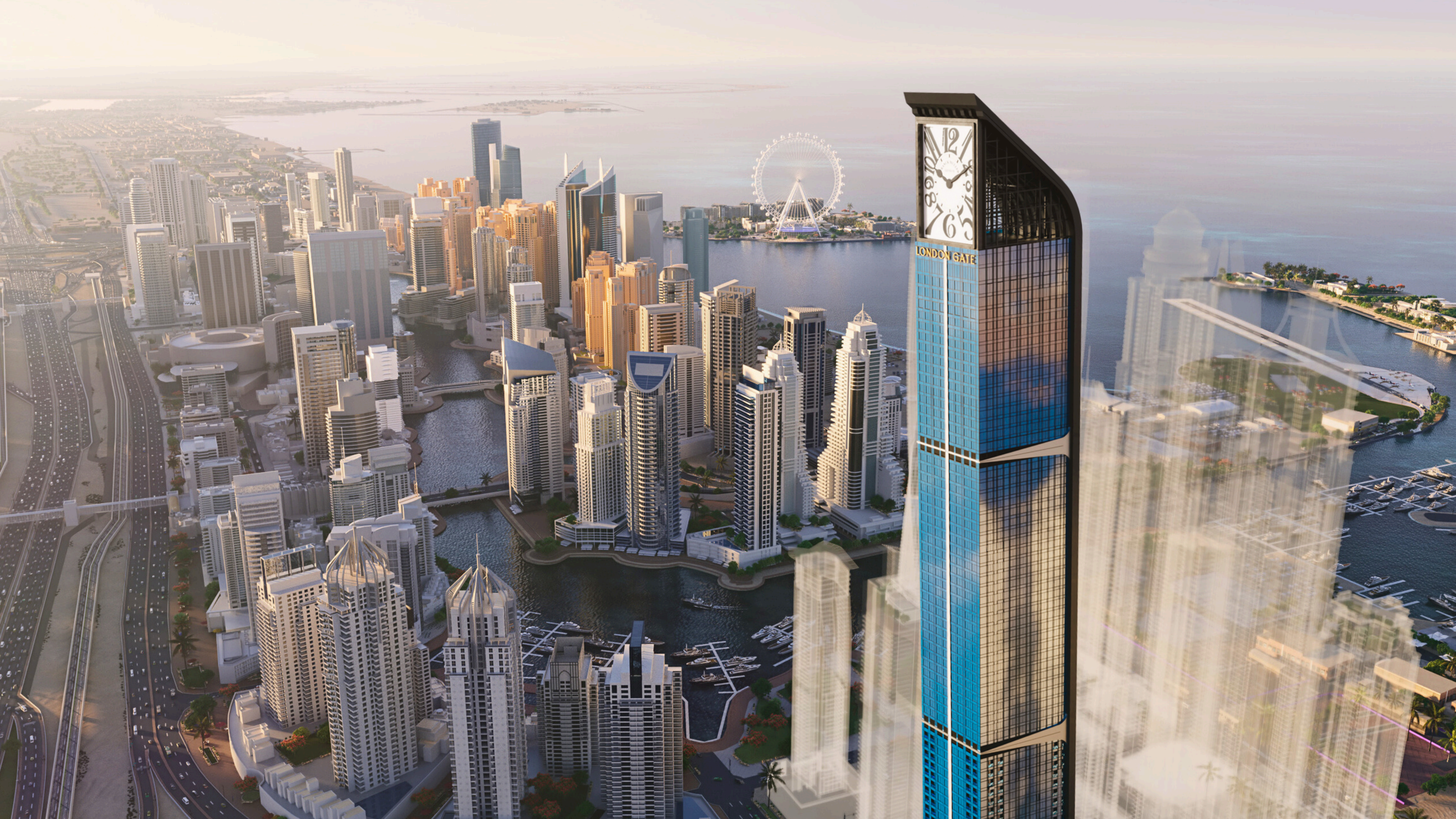
PALM JUMEIRAH DIRECTION

MEDIA CITY

DUBAI SKYLINE & EMIRATES GOLF

ROAD





FRANCK MULLER

AETERNITAS TOWER BY LONDON GATE

5 BEDROOM DUPLEX

SUITE 102-02

102/103

SUITE AREA	697.08 SQ.M	7503.30 SQ.FT
TERRACE AREA	0.00 SQ.M	0.00 SQ.FT
TOTAL AREA	697.08 SQ.M	7503.30 SQ.FT

KEY PLAN

MARINA WALK

PALM JUMEIRAH DIRECTION

MEDIA CITY

DUBAI SKYLINE & EMIRATES GOLF

ROAD



FRANCK MULLER

AETERNITAS TOWER BY LONDON GATE

5 BEDROOM DUPLEX

SUITE 102-02

102/103

SUITE AREA	697.08 SQ.M	7503.30 SQ.FT
TERRACE AREA	0 SQ.M	0 SQ.FT
TOTAL AREA	697.08 SQ.M	7503.30 SQ.FT

KEY PLAN

MARINA WALK

PALM JUMEIRAH DIRECTION

MEDIA CITY





FRANCK MULLER

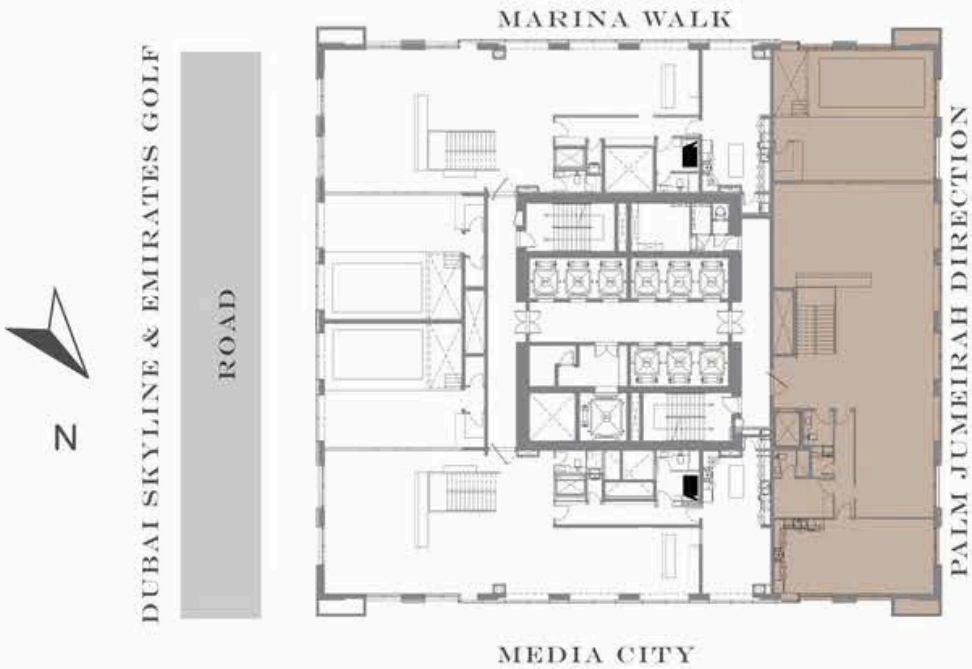
AETERNITAS TOWER
BY LONDON GATE

5 BEDROOM DUPLEX

SUITE 102-03
102/103

SUITE AREA	732.97 SQ.M	7889.62 SQ.FT
TERRACE AREA	0.00 SQ.M	0.00 SQ.FT
TOTAL AREA	732.97 SQ.M	7889.62 SQ.FT

KEY PLAN



FRANCK MULLER

AETERNITAS TOWER

BY LONDON GATE

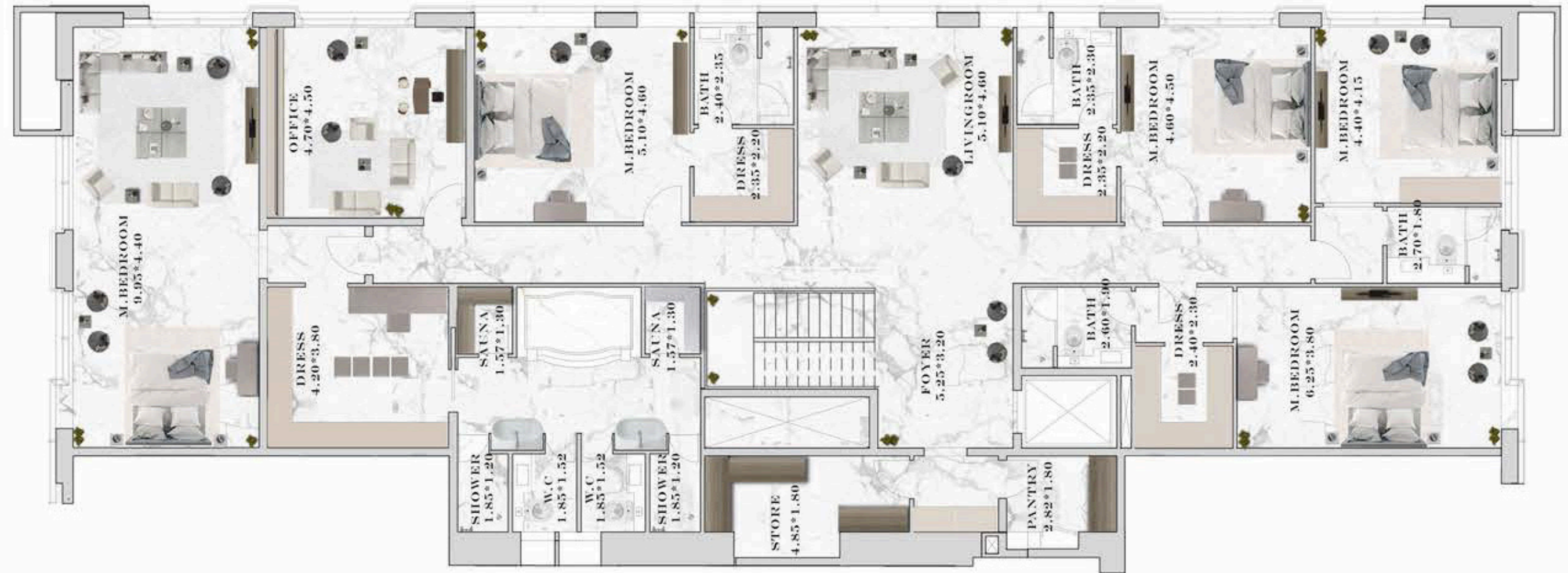
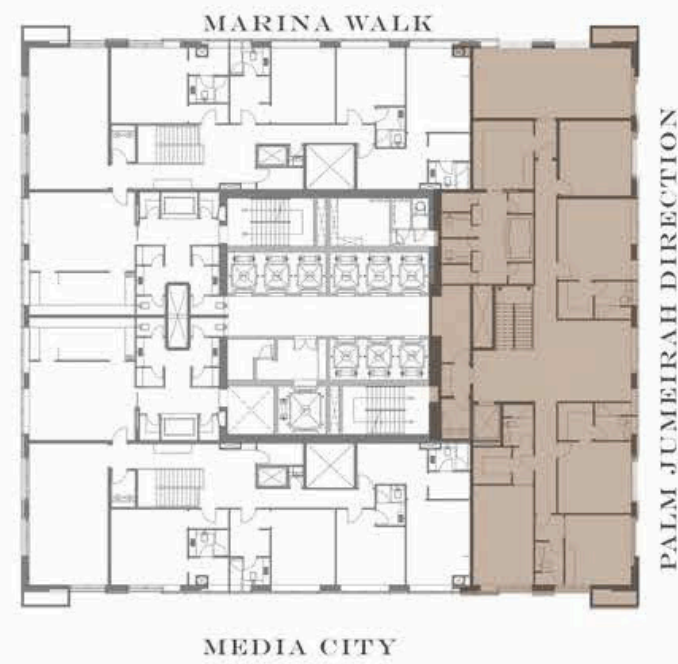
5 BEDROOM DUPLEX

SUITE 102-03

102/103

SUITE AREA	732.97 SQ.M	7889.62 SQ.FT
TERRACE AREA	0 SQ.M	0 SQ.FT
TOTAL AREA	732.97 SQ.M	7889.62 SQ.FT

KEY PLAN





AETERNITAS

PENTHOUSE FLOORPLAN



FRANCK MULLER

AETERNITAS TOWER

BY LONDON GATE

5 BEDROOM DUPLEX

SUITE 104-01

104/105

SUITE AREA	797.36 SQ.M	8582.71 SQ.FT
TERRACE AREA	0 SQ.M	0 SQ.FT
TOTAL AREA	797.36 SQ.M	8582.71 SQ.FT

KEY PLAN

MARINA WALK

PALM JUMEIRAH DIRECTION

MEDIA CITY

DUBAI SKYLINE & EMIRATES GOLF

ROAD



FRANCK MULLER

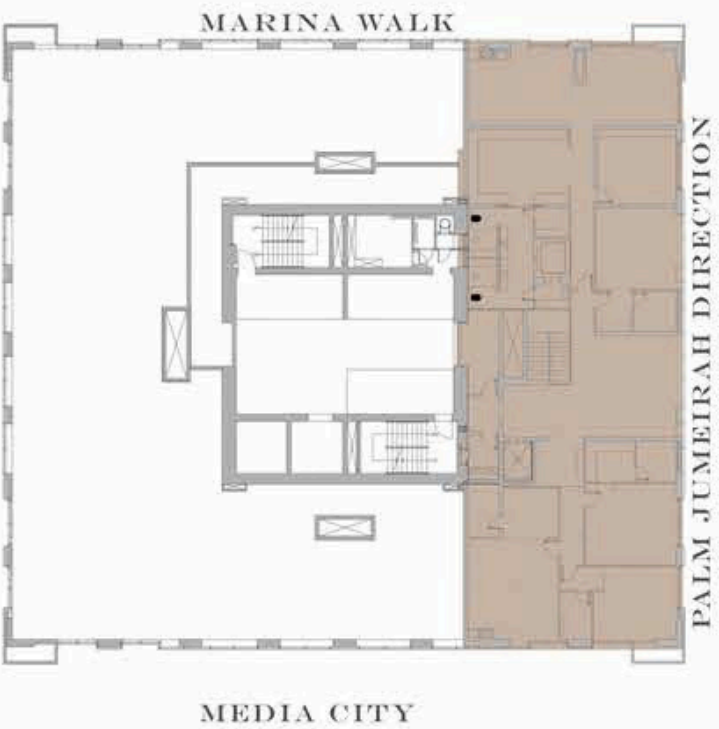
AETERNITAS TOWER
BY LONDON GATE

5 BEDROOM DUPLEX

SUITE 104-01
104/105

SUITE AREA	797.36 SQ.M	8582.71 SQ.FT
TERRACE AREA	0 SQ.M	0 SQ.FT
TOTAL AREA	797.36 SQ.M	8582.71 SQ.FT

KEY PLAN









PAYMENT PLAN

30 / 70

10% + 4% TO BOOK THE UNIT

30 DAYS - **10%** • 12 MONTHS - **5%** • 12 MONTHS - **5%** • HANDOVER - **70%**



COMMISSION TO BE EARNED 5%

SKY MANSIONS STARTING AT 1.5M AED

- SKY MANSION 01 SERIES **30M AED**
- SKY MANSION 02 SERIES **30M AED**
- SKY MANSION 03 SERIES **34M AED**

AETERNITAS PENTHOUSE AT 2.75M AED

- AETERNITAS PENTHOUSE **55M AED**

THANK YOU

