



TERRAZZO

RESIDENCES | BY TARAF



The Most Well-Planned
Spaces in Dubai



Embrace the Perfect Balance

Experience the sublime blend of modern architecture and nature at Terrazzo.





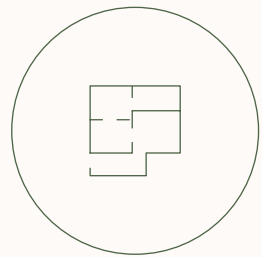
1-3 bedroom apartments, tailor
made for a harmonious family
living experience.

Why should you choose Terrazzo?



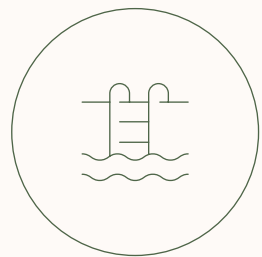
A YAS HOLDING COMPANY

Taraf Development is the real estate arm of YAS Holding – which is a renowned UAE headquartered investment company with a multi-industry business portfolio spanning multiple sectors and more than 50 operating subsidiaries.



THE MOST WELL-PLANNED SPACES

Taraf believes in improving life and lifestyle by building exquisite living spaces. Each home is meticulously planned to provide ample space for you to live a luxurious life.



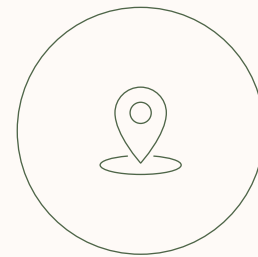
AMENITIES DECK LIKE NO OTHER

If you look at our amenities deck, you will realize that we are one of the very few who have provided a complete amenities deck for you to unwind as you wish. This is keeping our vision in mind of providing a lifestyle that improves lives of our clients.



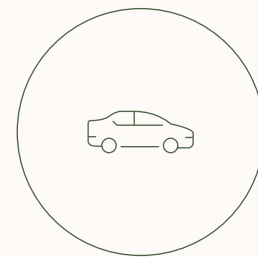
TOP-OF-THE-LINE AMENITIES

Double-height indoor gymnasium, an outdoor gymnasium, infinity pool overlooking the lush community park, indoor and outdoor entertainment zones, a kids playground and much more, so that you don't have to leave TERRAZZO for anything.



SURROUNDED BY THE BEST OF JVC

Terrazzo is placed right between Gadaf Park – one of the largest parks in JVC, Circle Mall – the largest shopping mall in JVC, an International School, Bus Stop and Life Pharmacy, all already functional and ready to be available at your convenience.















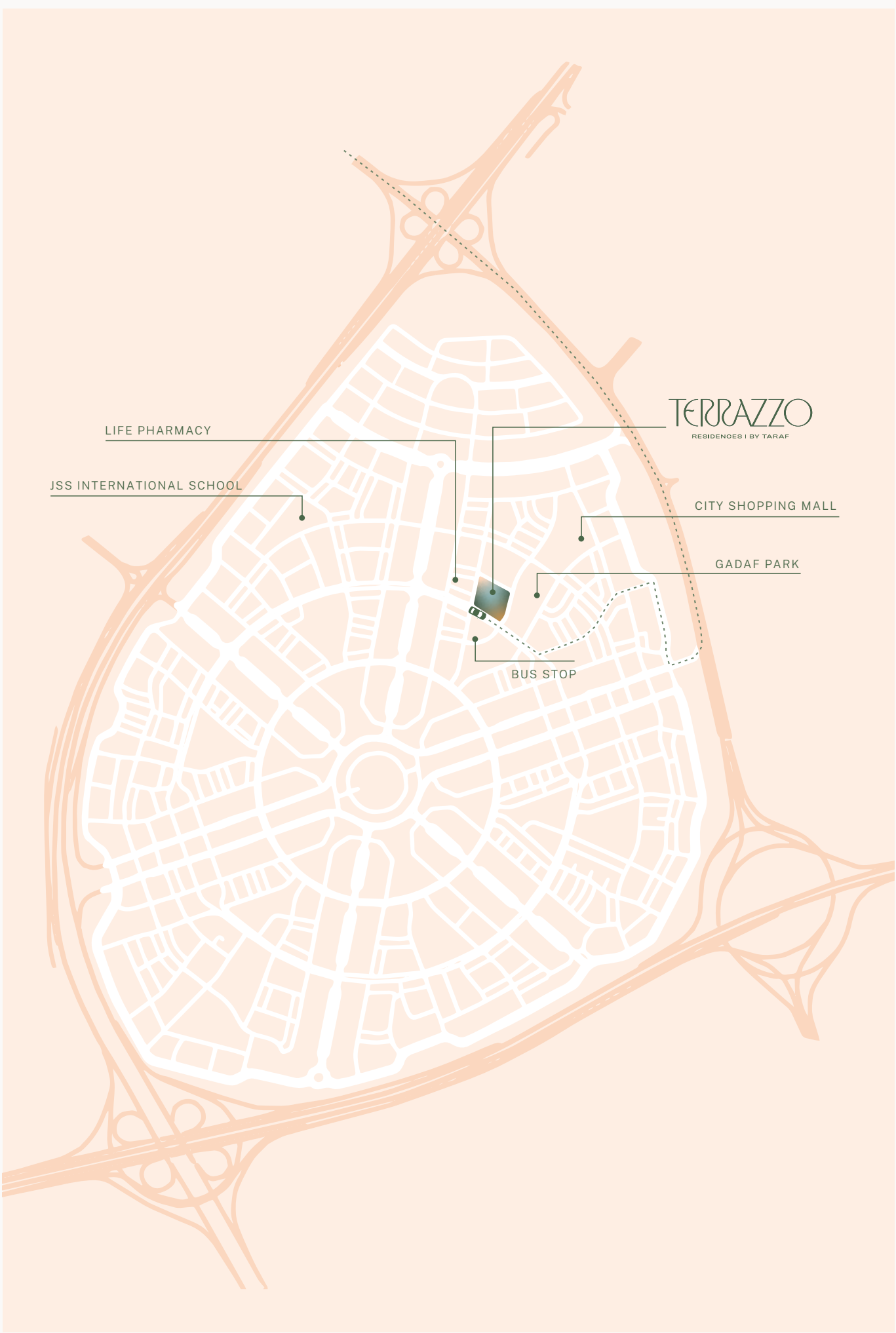
QUICK ACCESS TO AL KHAIL

Our plot at Terrazzo was strategically chosen and designed in a way that you do not feel the need to step outside. But if you do, you can immediately access the new highway parallel to Sheikh Zayed Road – Al Khail Road.



Your Personal Oasis of Calm in the Heart of New Dubai.

- | | | | |
|--|--|---|--|
|  2 Minutes
Circle Mall |  10 Minutes
Mall of the Emirates |  15 Minutes
Burj Al Arab |  20 Minutes
Museum of the Future |
|  7 Minutes
Dubai Hills Mall |  10 Minutes
Downtown Dubai & Burj Khalifa |  18 Minutes
Palm Jumeirah |  28 Minutes
Dubai World Trade Center |
|  10 Minutes
Dubai Marina |  12 Minutes
Ain Dubai |  20 Minutes
Jumeirah Beach |  30 Minutes
Dubai International Airport |



ONE BEDROOM - TYPE 1A

APARTMENT HIGHLIGHTS

- 1. An entrance which opens into an open space, and not a wall.
- 2. A U-Shaped Kitchen with dedicated Platform.
- 3. A dedicated space for a 4 to 6-seater dining area, separate from the kitchen space.
- 4. A separate laundry room, so that you have enough storage space in the kitchen.
- 5. A dedicated storage space for your belongings.
- 6. A master bedroom where you can place a bed as well as side tables and still have space to move around.
- 7. All our apartments have walk-in wardrobes with well planned storage spaces.
- 8. Access to Balcony from all rooms.

SUITE AREA (SQFT)
745.5 SQ. FT.

BALCONY AREA
42.2 SQ. FT.

TOTAL AREA
793.86 SQ. FT.



FLOOR PLANS

FIRST FLOOR



SECOND FLOOR



THIRD & FOURTH FLOOR



FIFTH FLOOR



*Scheduled Q2025 4. Dimensions on floor plans are approximate. Final dimensions and floor plans may vary and are subject to change without notice. The developer reserves the right to make revisions. Areas are measured in accordance with the Dubai Land Department standards. Internal Furniture/ Equipment and Landscaping are indicative. Artistic renderings and images are for illustrative purpose only and are subject to change without notice. T&C Apply.

ONE BEDROOM - TYPE 1B

APARTMENT HIGHLIGHTS

- 1. An entrance which opens into an open space, and not a wall.
- 2. A U-Shaped Kitchen with dedicated Platform.
- 3. A dedicated space for a 4 to 6-seater dining area, separate from the kitchen space.
- 4. A separate laundry room, so that you have enough storage space in the kitchen.
- 5. A dedicated storage space for your belongings.
- 6. A master bedroom where you can place a bed as well as side tables and still have space to move around.
- 7. All our apartments have walk-in wardrobes with well planned storage spaces.
- 8. Access to Balcony from all rooms.

SUITE AREA (SQFT)
745.8 SQ. FT.

BALCONY AREA
235.9 SQ. FT.

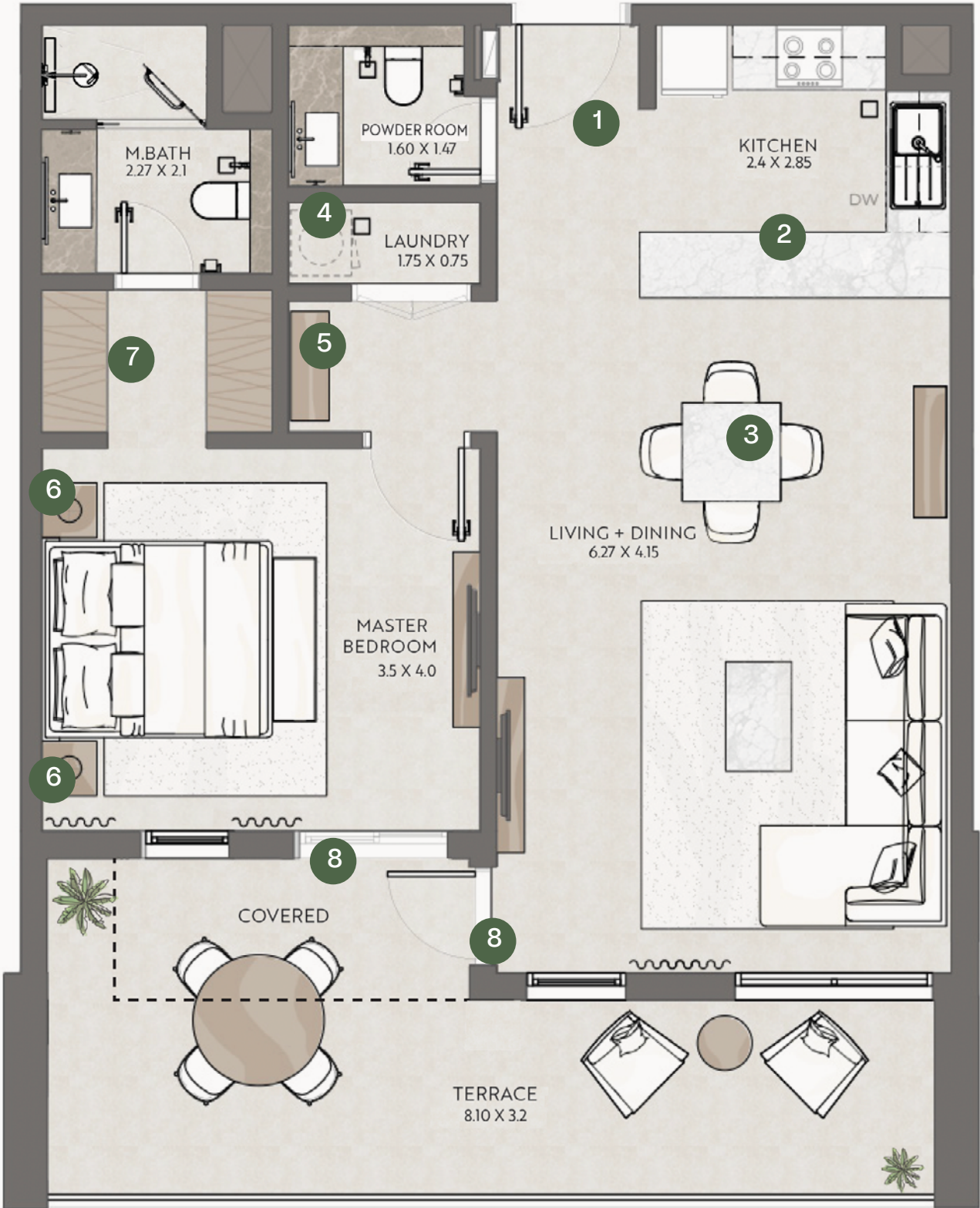
TOTAL AREA
981.75 SQ. FT.

FLOOR PLANS

FIRST FLOOR



*Scheduled Q2025 4. Dimensions on floor plans are approximate. Final dimensions and floor plans may vary and are subject to change without notice. The developer reserves the right to make revisions. Areas are measured in accordance with the Dubai Land Department standards. Internal Furniture/ Equipment and Landscaping are indicative. Artistic renderings and images are for illustrative purpose only and are subject to change without notice. T&C Apply.

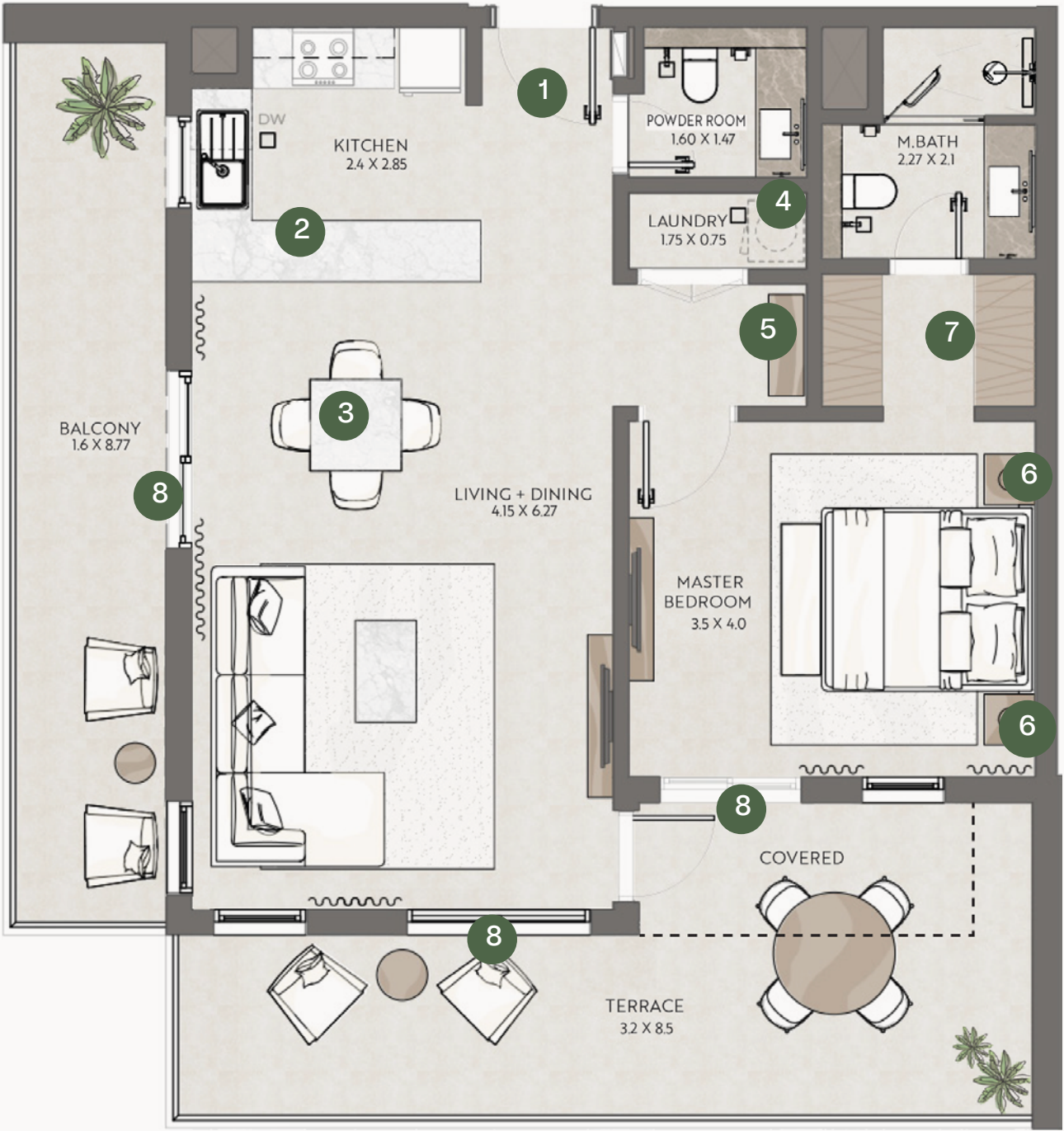


ONE BEDROOM - TYPE 1C

APARTMENT HIGHLIGHTS

- 1. An entrance which opens into an open space, and not a wall.
- 2. A U-Shaped Kitchen with dedicated Platform.
- 3. A dedicated space for a 4 to 6-seater dining area, separate from the kitchen space.
- 4. A separate laundry room, so that you have enough storage space in the kitchen.
- 5. A dedicated storage space for your belongings.
- 6. A master bedroom where you can place a bed as well as side tables and still have space to move around.
- 7. All our apartments have walk-in wardrobes with well planned storage spaces.
- 8. Access to a spacious Balcony from all rooms.

SUITE AREA (SQFT)
743.89 SQ. FT.
BALCONY AREA
395.14 SQ. FT.
TOTAL AREA
1,139 SQ. FT.



FLOOR PLANS

FIRST FLOOR



*Scheduled Q2025 4. Dimensions on floor plans are approximate. Final dimensions and floor plans may vary and are subject to change without notice. The developer reserves the right to make revisions. Areas are measured in accordance with the Dubai Land Department standards. Internal Furniture/ Equipment and Landscaping are indicative. Artistic renderings and images are for illustrative purpose only and are subject to change without notice. T&C Apply.

ONE BEDROOM - TYPE 1D

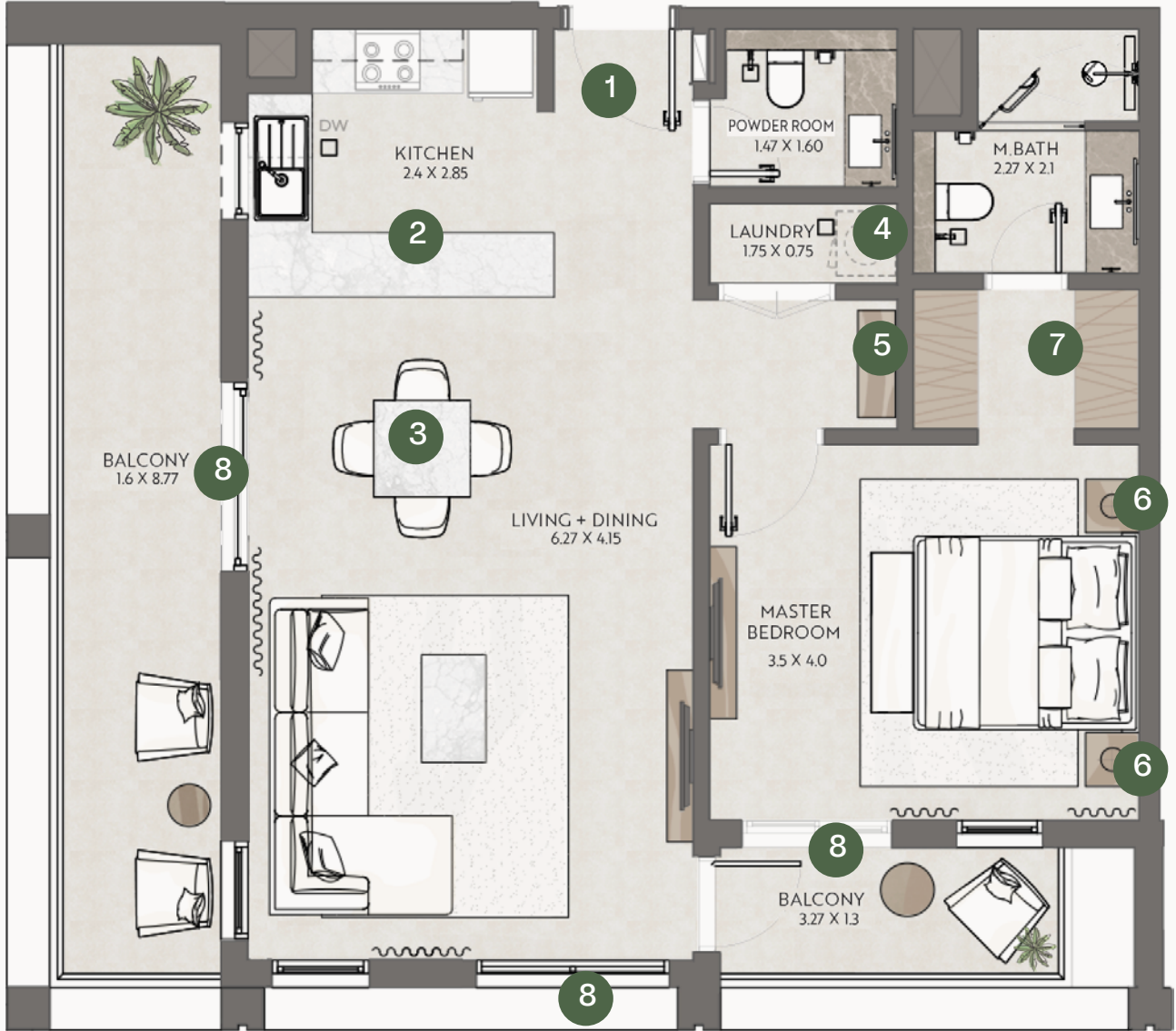
APARTMENT HIGHLIGHTS

- 1. An entrance which opens into an open space, and not a wall.
- 2. A U-Shaped Kitchen with dedicated Platform.
- 3. A dedicated space for a 4 to 6-seater dining area, separate from the kitchen space.
- 4. A separate laundry room, so that you have enough storage space in the kitchen.
- 5. A dedicated storage space for your belongings.
- 6. A master bedroom where you can place a bed as well as side tables and still have space to move around.
- 7. All our apartments have walk-in wardrobes with well planned storage spaces.
- 8. Access to a spacious Balcony from all rooms.

SUITE AREA (SQFT)
743.79 SQ. FT.

BALCONY AREA
205.81 SQ. FT.

TOTAL AREA
949.6 SQ. FT.



FLOOR PLANS

SECOND TO FOURTH FLOOR



*Scheduled Q2025 4. Dimensions on floor plans are approximate. Final dimensions and floor plans may vary and are subject to change without notice. The developer reserves the right to make revisions. Areas are measured in accordance with the Dubai Land Department standards. Internal Furniture/ Equipment and Landscaping are indicative. Artistic renderings and images are for illustrative purpose only and are subject to change without notice. T&C Apply.

ONE BEDROOM - TYPE 2A

APARTMENT HIGHLIGHTS

- 1. An entrance which opens into an open space, and not a wall.
- 2. A U-Shaped Kitchen with dedicated Platform.
- 3. A dedicated space for a 4 to 6-seater dining area, separate from the kitchen space.
- 4. A separate laundry room, so that you have enough storage space in the kitchen.
- 5. A dedicated storage space for your belongings.
- 6. A master bedroom where you can place a bed as well as side tables and still have space to move around.
- 7. All our apartments have walk-in wardrobes with well planned storage spaces.
- 8. Access to a spacious Balcony from all rooms.

SUITE AREA (SQFT)

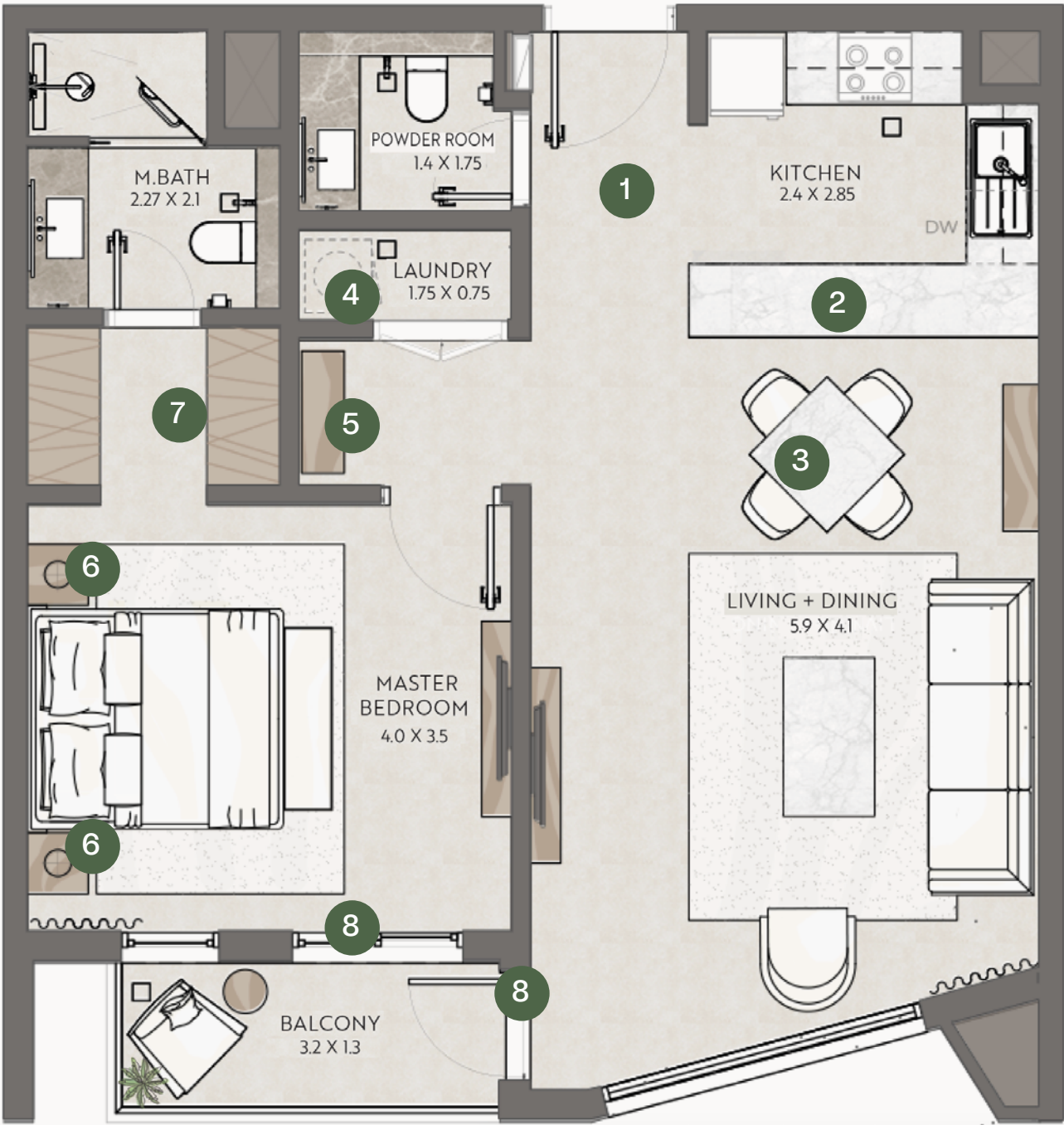
723 SQ. FT.

BALCONY AREA

48.4 SQ. FT.

TOTAL AREA

771.45 SQ. FT.



FLOOR PLANS

SECOND TO FOURTH FLOOR



FIFTH FLOOR



*Scheduled Q2025 4. Dimensions on floor plans are approximate. Final dimensions and floor plans may vary and are subject to change without notice. The developer reserves the right to make revisions. Areas are measured in accordance with the Dubai Land Department standards. Internal Furniture/ Equipment and Landscaping are indicative. Artistic renderings and images are for illustrative purpose only and are subject to change without notice. T&C Apply.

ONE BEDROOM - TYPE 2B

APARTMENT HIGHLIGHTS

- 1. An entrance which opens into an open space, and not a wall.
- 2. A U-Shaped Kitchen with dedicated Platform.
- 3. A dedicated space for a 4 to 6-seater dining area, separate from the kitchen space.
- 4. A separate laundry room, so that you have enough storage space in the kitchen.
- 5. A dedicated storage space for your belongings.
- 6. A master bedroom where you can place a bed as well as side tables and still have space to move around.
- 7. All our apartments have walk-in wardrobes with well planned storage spaces.
- 8. Access to a spacious Balcony from all rooms.

SUITE AREA (SQFT)
723.11 SQ. FT.

BALCONY AREA
254.89 SQ. FT.

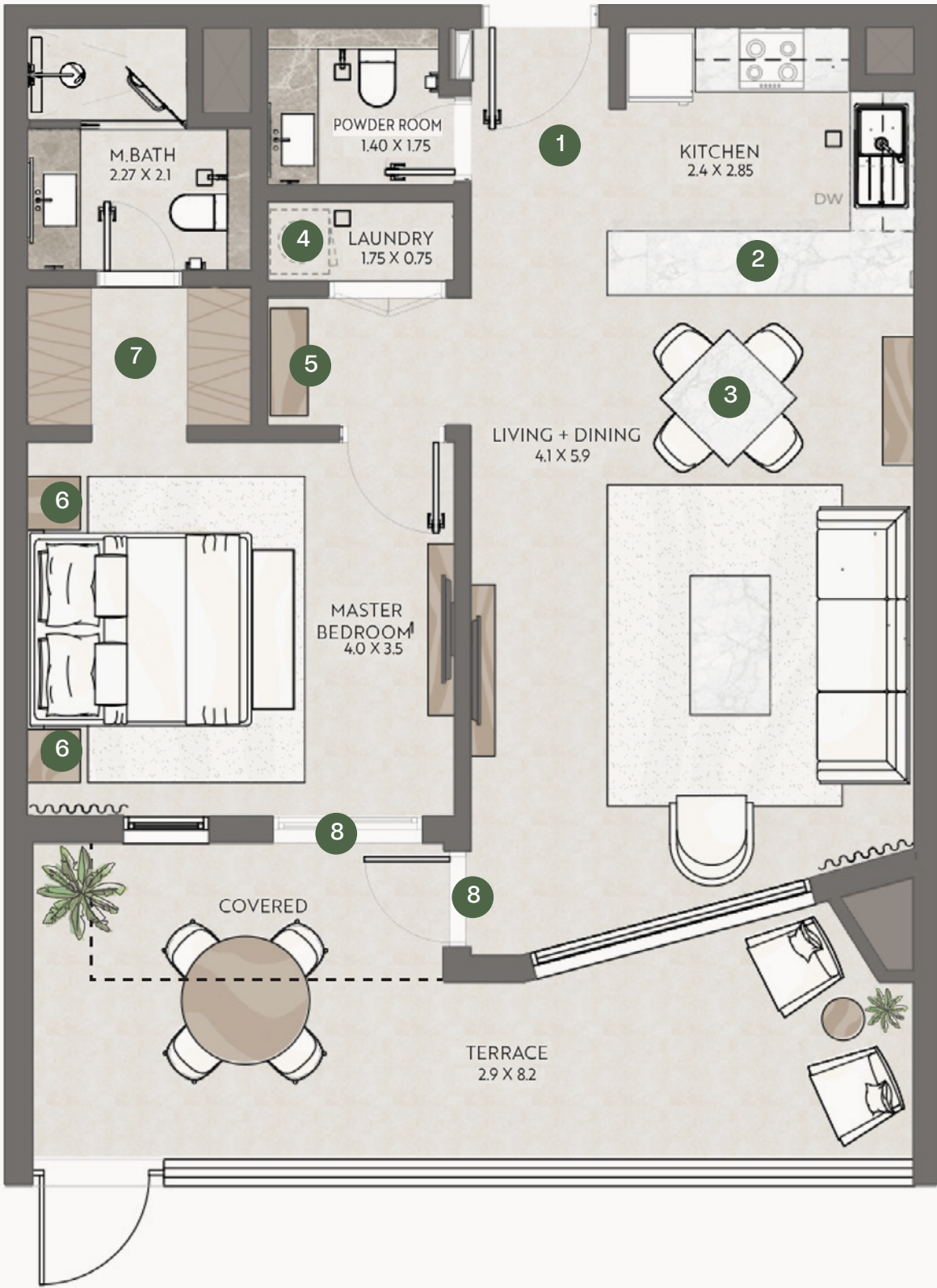
TOTAL AREA
978 SQ. FT.

FLOOR PLANS

SECOND TO FOURTH FLOOR



*Scheduled Q2025 4. Dimensions on floor plans are approximate. Final dimensions and floor plans may vary and are subject to change without notice. The developer reserves the right to make revisions. Areas are measured in accordance with the Dubai Land Department standards. Internal Furniture/ Equipment and Landscaping are indicative. Artistic renderings and images are for illustrative purpose only and are subject to change without notice. T&C Apply.



ONE BEDROOM - TYPE 3

APARTMENT HIGHLIGHTS

- 1. An entrance which opens into an open space, and not a wall.
- 2. A U-Shaped Kitchen with dedicated Platform.
- 3. A dedicated space for a 4 to 6-seater dining area, separate from the kitchen space.
- 4. A separate laundry room, so that you have enough storage space in the kitchen.
- 5. A master bedroom where you can place a bed as well as side tables and still have space to move around.
- 6. All our apartments have walk-in wardrobes with well planned storage spaces.
- 7. Access to a spacious Balcony from all rooms.

SUITE AREA (SQFT)
879.63 SQ. FT.

BALCONY AREA
345.2 SQ. FT.

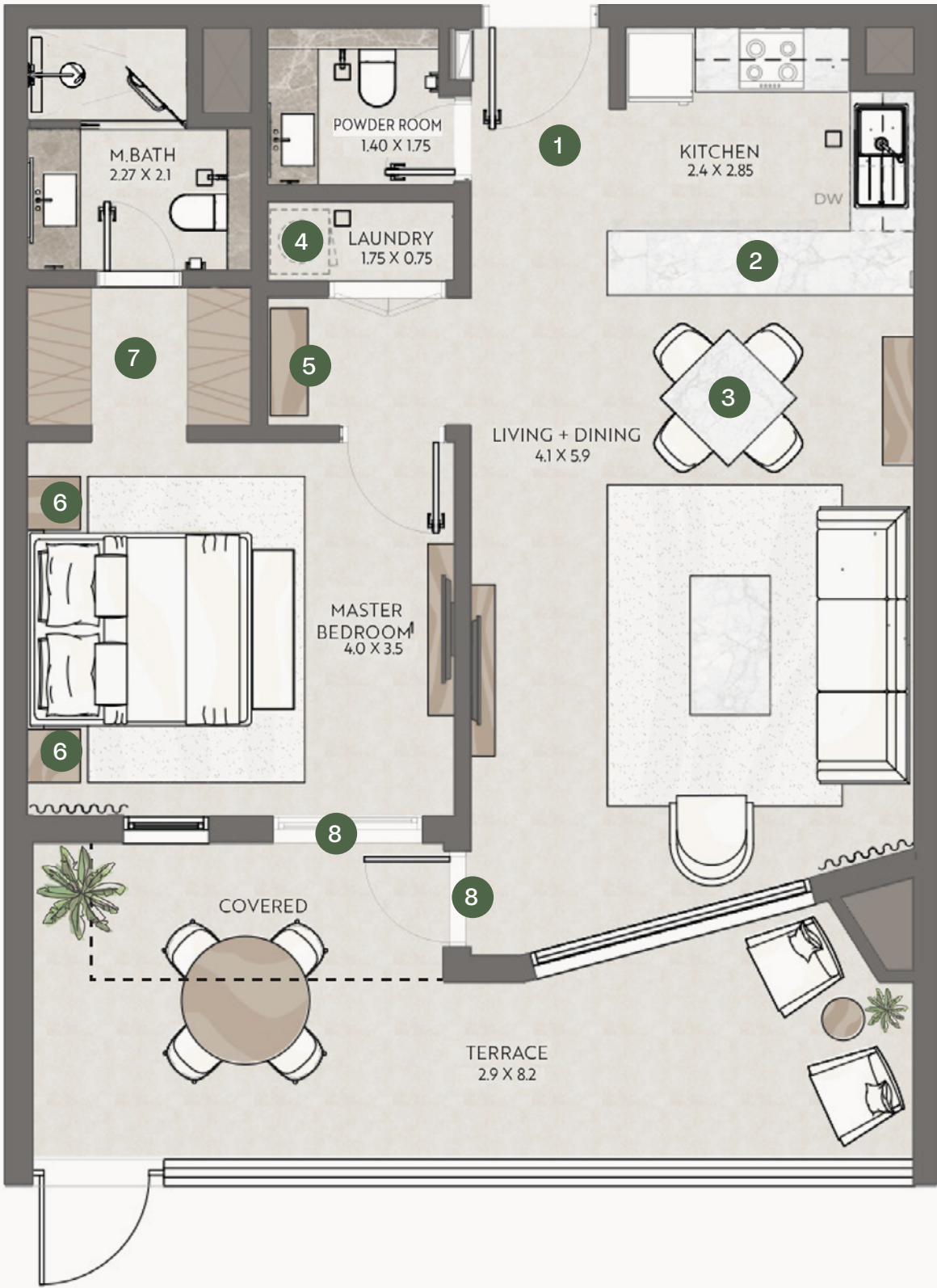
TOTAL AREA
1,224.8 SQ. FT.

FLOOR PLANS

SECOND TO FOURTH FLOOR



*Scheduled Q2025 4. Dimensions on floor plans are approximate. Final dimensions and floor plans may vary and are subject to change without notice. The developer reserves the right to make revisions. Areas are measured in accordance with the Dubai Land Department standards. Internal Furniture/ Equipment and Landscaping are indicative. Artistic renderings and images are for illustrative purpose only and are subject to change without notice. T&C Apply.

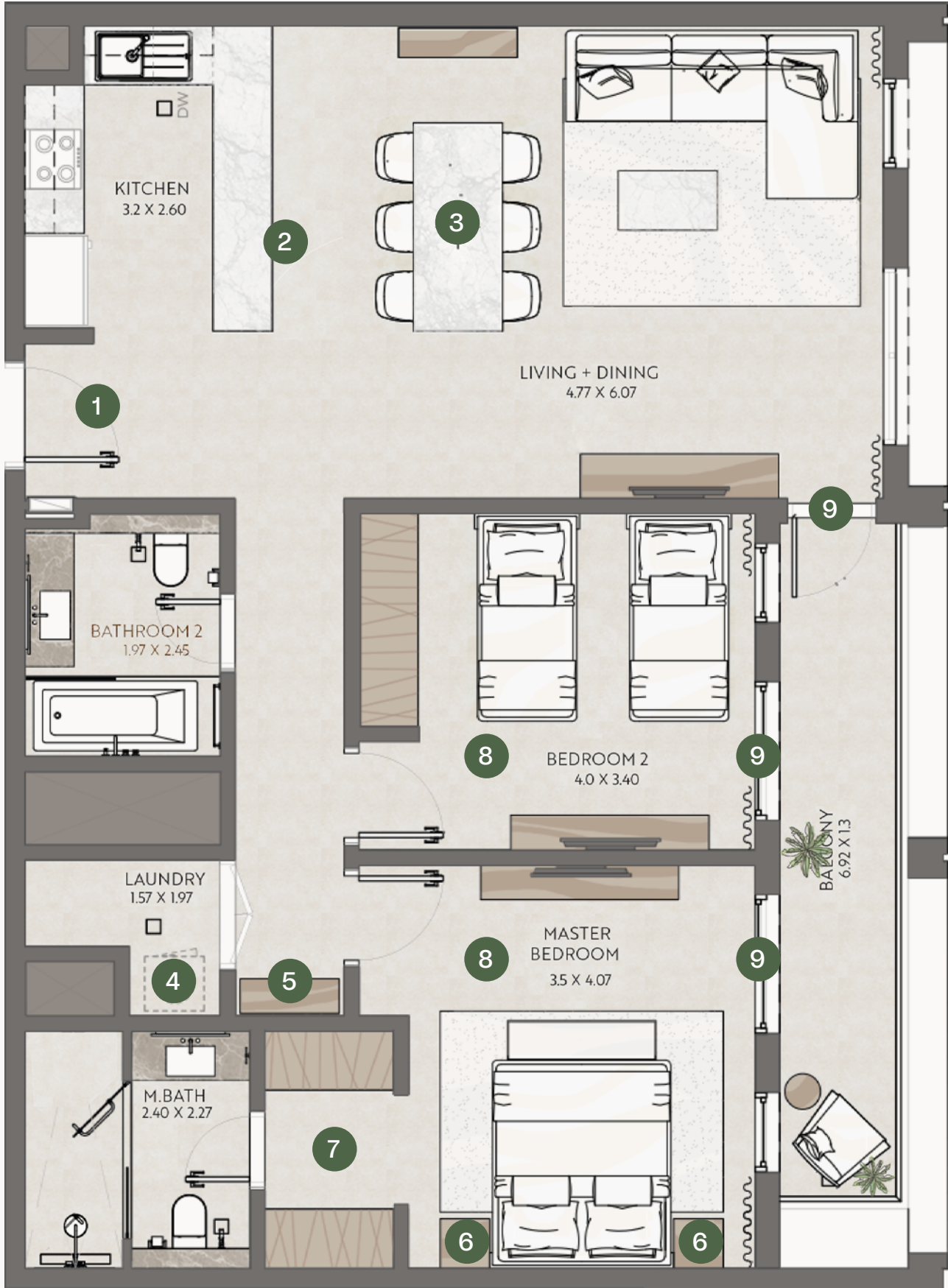


TWO BEDROOM - TYPE 1A

APARTMENT HIGHLIGHTS

- 1. An entrance which opens into an open space, and not a wall.
- 2. A U-Shaped Kitchen with dedicated Platform.
- 3. A dedicated space for a 4 to 6-seater dining area, separate from the kitchen space.
- 4. A separate laundry room, so that you have enough storage space in the kitchen.
- 5. A dedicated storage space for your belongings.
- 6. A master bedroom where you can place a bed as well as side tables and still have space to move around.
- 7. All our apartments have walk-in wardrobes with well planned storage spaces.
- 8. Both bedrooms are master size bedrooms.
- 9. Access to a spacious Balcony from all rooms.

SUITE AREA (SQFT)
1,078.1 SQ. FT.
BALCONY AREA
101.37 SQ. FT.
TOTAL AREA
1,179.4 SQ. FT.



FLOOR PLANS

FIRST FLOOR



SECOND FLOOR



THIRD & FOURTH FLOOR



FIFTH FLOOR



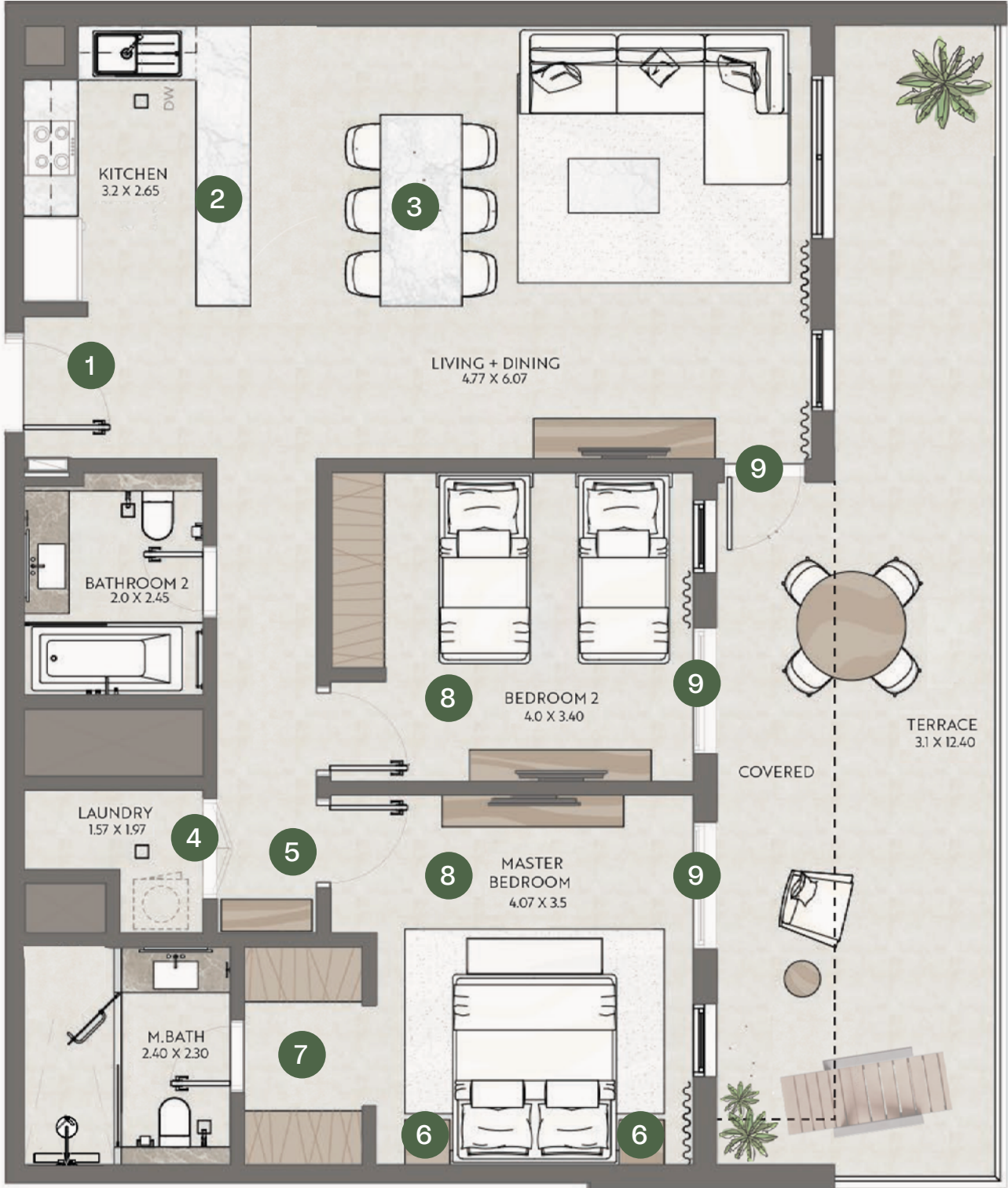
*Scheduled Q2025 4. Dimensions on floor plans are approximate. Final dimensions and floor plans may vary and are subject to change without notice. The developer reserves the right to make revisions. Areas are measured in accordance with the Dubai Land Department standards. Internal Furniture/ Equipment and Landscaping are indicative. Artistic renderings and images are for illustrative purpose only and are subject to change without notice. T&C Apply.

TWO BEDROOM - TYPE 1B

APARTMENT HIGHLIGHTS

- 1. An entrance which opens into an open space, and not a wall.
- 2. A U-Shaped Kitchen with dedicated Platform.
- 3. A dedicated space for a 4 to 6-seater dining area, separate from the kitchen space.
- 4. A separate laundry room, so that you have enough storage space in the kitchen.
- 5. A dedicated storage space for your belongings.
- 6. A master bedroom where you can place a bed as well as side tables and still have space to move around.
- 7. All our apartments have walk-in wardrobes with well planned storage spaces.
- 8. Both bedrooms are master size bedrooms.
- 9. Access to a spacious Balcony from all rooms.

SUITE AREA (SQFT)
1,075.32 SQ. FT.
BALCONY AREA
375.18 SQ. FT.
TOTAL AREA
1,450.5 SQ. FT.



FLOOR PLANS



*Scheduled Q2025 4. Dimensions on floor plans are approximate. Final dimensions and floor plans may vary and are subject to change without notice. The developer reserves the right to make revisions. Areas are measured in accordance with the Dubai Land Department standards. Internal Furniture/ Equipment and Landscaping are indicative. Artistic renderings and images are for illustrative purpose only and are subject to change without notice. T&C Apply.

TWO BEDROOM - TYPE 1C

APARTMENT HIGHLIGHTS

- 1. An entrance which opens into an open space, and not a wall.
- 2. A U-Shaped Kitchen with dedicated Platform.
- 3. A dedicated space for a 4 to 6-seater dining area, separate from the kitchen space.
- 4. A separate laundry room, so that you have enough storage space in the kitchen.
- 5. A dedicated storage space for your belongings.
- 6. A master bedroom where you can place a bed as well as side tables and still have space to move around.
- 7. All our apartments have walk-in wardrobes with well planned storage spaces.
- 8. Both bedrooms are master size bedrooms.
- 9. Access to 2 spacious Balconies.

SUITE AREA (SQFT)
1,084.1 SQ. FT.
BALCONY AREA
258.01 SQ. FT.
TOTAL AREA
1,342.11 SQ. FT.

FLOOR PLANS

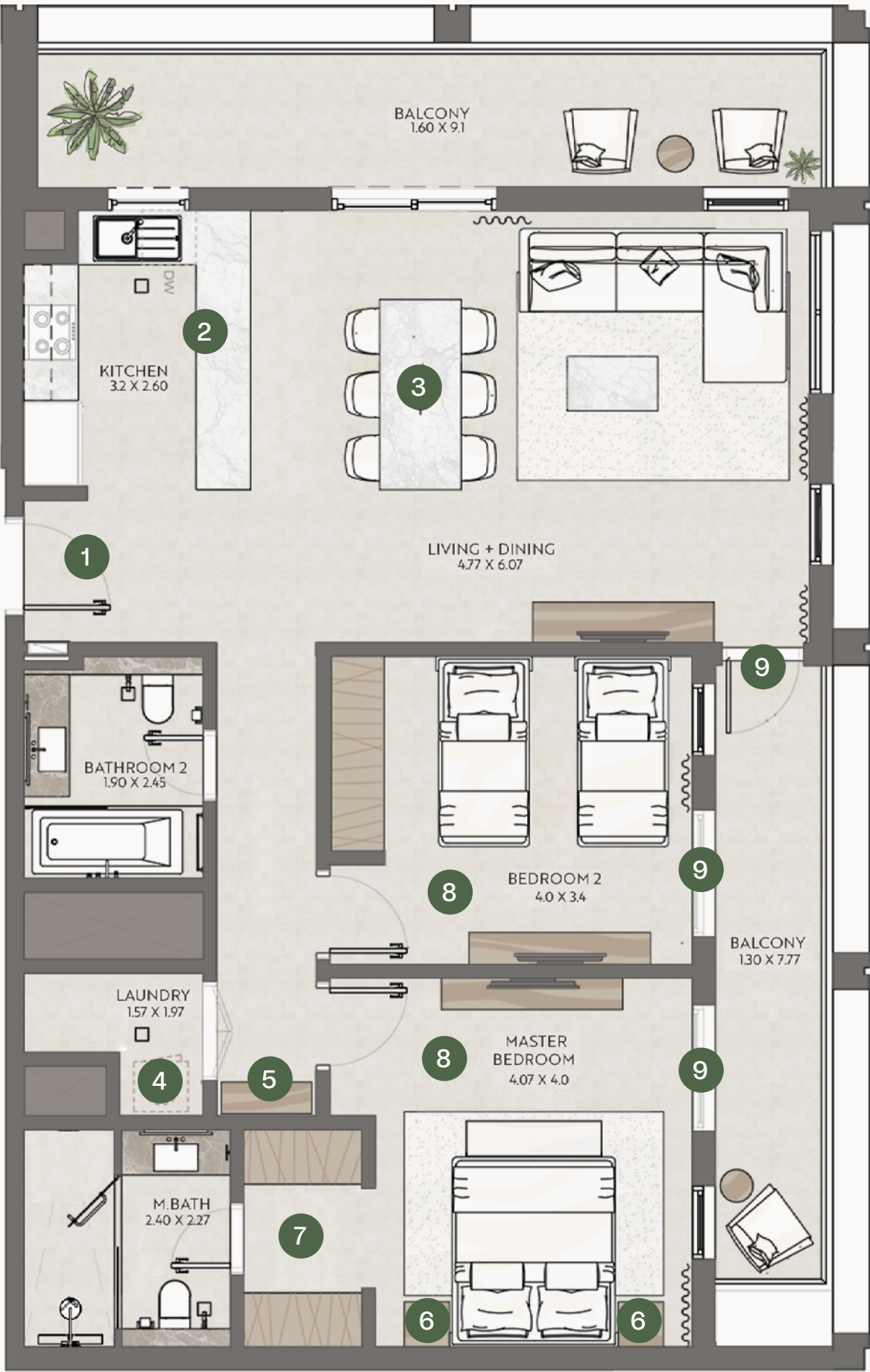
FIRST FLOOR



SECOND TO FOURTH FLOOR



*Scheduled Q2025 4. Dimensions on floor plans are approximate. Final dimensions and floor plans may vary and are subject to change without notice. The developer reserves the right to make revisions. Areas are measured in accordance with the Dubai Land Department standards. Internal Furniture/ Equipment and Landscaping are indicative. Artistic renderings and images are for illustrative purpose only and are subject to change without notice. T&C Apply.



TWO BEDROOM - TYPE 1D

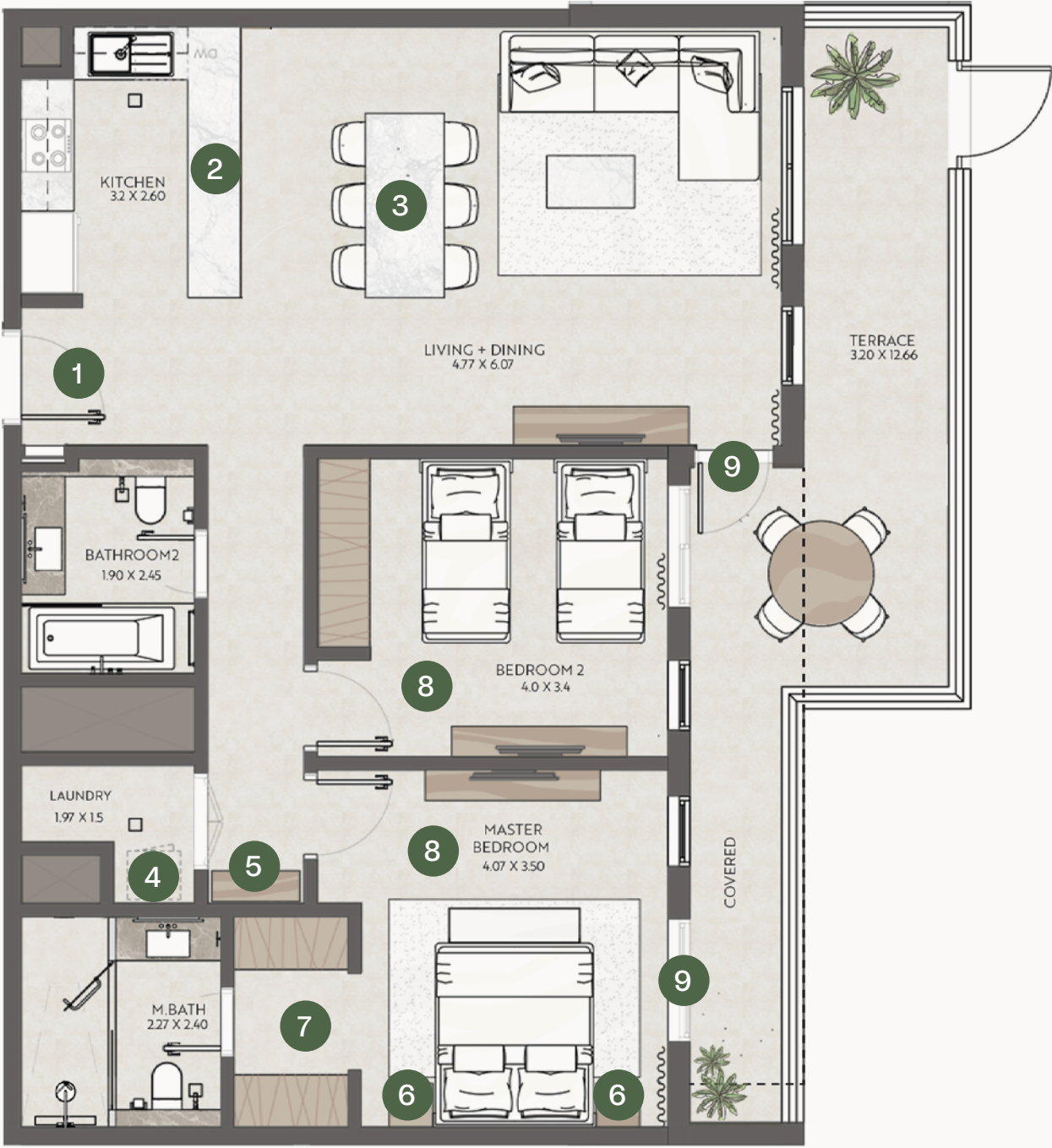
APARTMENT HIGHLIGHTS

- 1. An entrance which opens into an open space, and not a wall.
- 2. A U-Shaped Kitchen with dedicated Platform.
- 3. A dedicated space for a 4 to 6-seater dining area, separate from the kitchen space.
- 4. A separate laundry room, so that you have enough storage space in the kitchen.
- 5. A dedicated storage space for your belongings.
- 6. A master bedroom where you can place a bed as well as side tables and still have space to move around.
- 7. All our apartments have walk-in wardrobes with well planned storage spaces.
- 8. Both bedrooms are master size bedrooms.
- 9. Access to a spacious Balcony from all rooms.

SUITE AREA (SQFT)
1,082.5 SQ. FT.

BALCONY AREA
265.71 SQ. FT.

TOTAL AREA
1,348.21 SQ. FT.



FLOOR PLANS

FIRST FLOOR



*Scheduled Q2025 4. Dimensions on floor plans are approximate. Final dimensions and floor plans may vary and are subject to change without notice. The developer reserves the right to make revisions. Areas are measured in accordance with the Dubai Land Department standards. Internal Furniture/ Equipment and Landscaping are indicative. Artistic renderings and images are for illustrative purpose only and are subject to change without notice. T&C Apply.

TWO BEDROOM - TYPE 2A

APARTMENT HIGHLIGHTS

- 1. An entrance which opens into an open space, and not a wall.
- 2. A U-Shaped Kitchen with dedicated Platform.
- 3. A dedicated space for a 4 to 6-seater dining area, separate from the kitchen space.
- 4. A separate laundry room, so that you have enough storage space in the kitchen.
- 5. A dedicated storage space for your belongings.
- 6. A master bedroom where you can place a bed as well as side tables and still have space to move around.
- 7. All our apartments have walk-in wardrobes with well planned storage spaces.
- 8. Both bedrooms are master size bedrooms.
- 9. Access to a spacious Balcony.

SUITE AREA (SQFT)
1,050.45 SQ. FT.
BALCONY AREA
102.26 SQ. FT.
TOTAL AREA
1,152.71 SQ. FT.

FLOOR PLANS

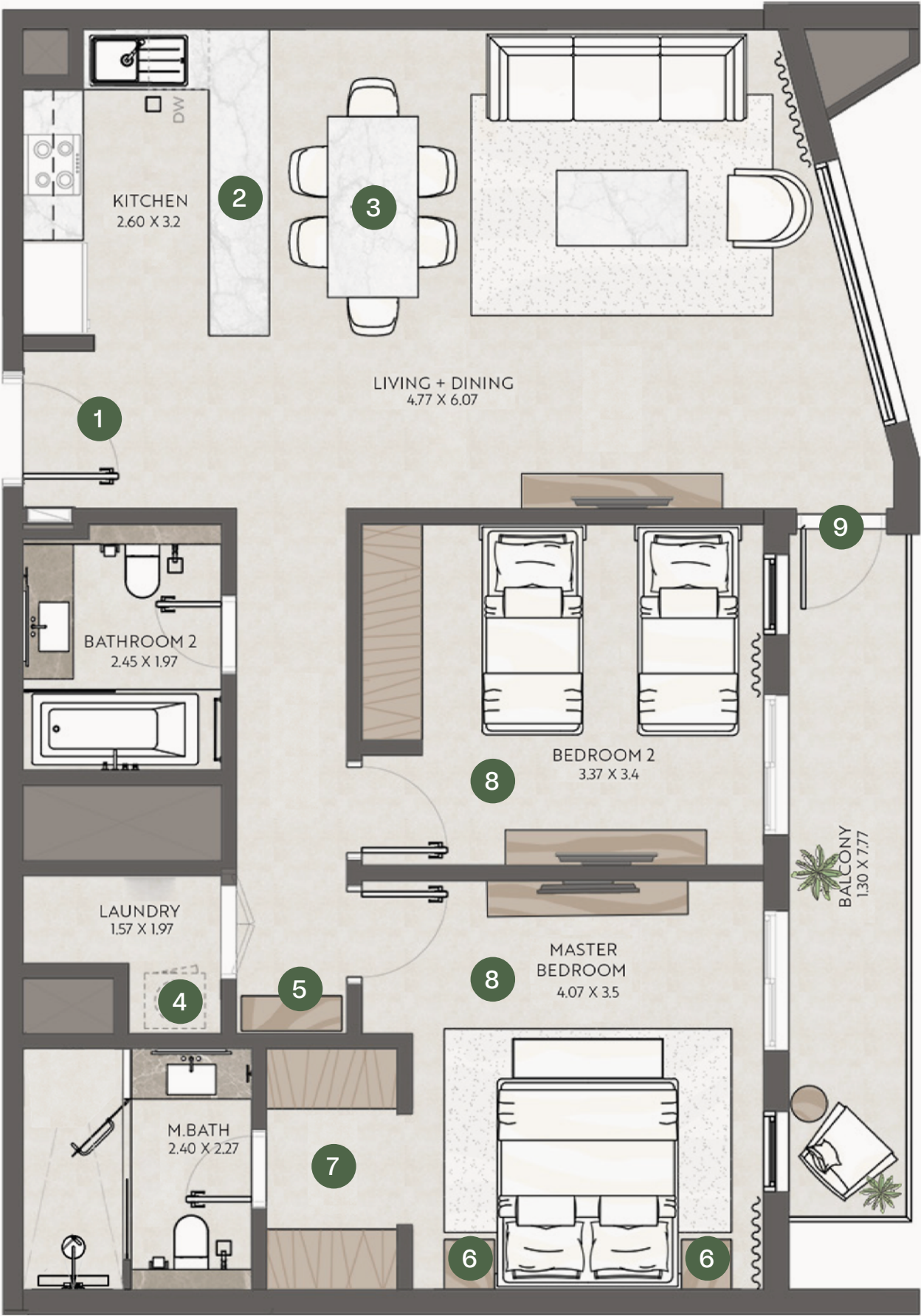
SECOND TO FOURTH FLOOR



FIFTH FLOOR



*Scheduled Q2025 4. Dimensions on floor plans are approximate. Final dimensions and floor plans may vary and are subject to change without notice. The developer reserves the right to make revisions. Areas are measured in accordance with the Dubai Land Department standards. Internal Furniture/ Equipment and Landscaping are indicative. Artistic renderings and images are for illustrative purpose only and are subject to change without notice. T&C Apply.



TWO BEDROOM - TYPE 2B

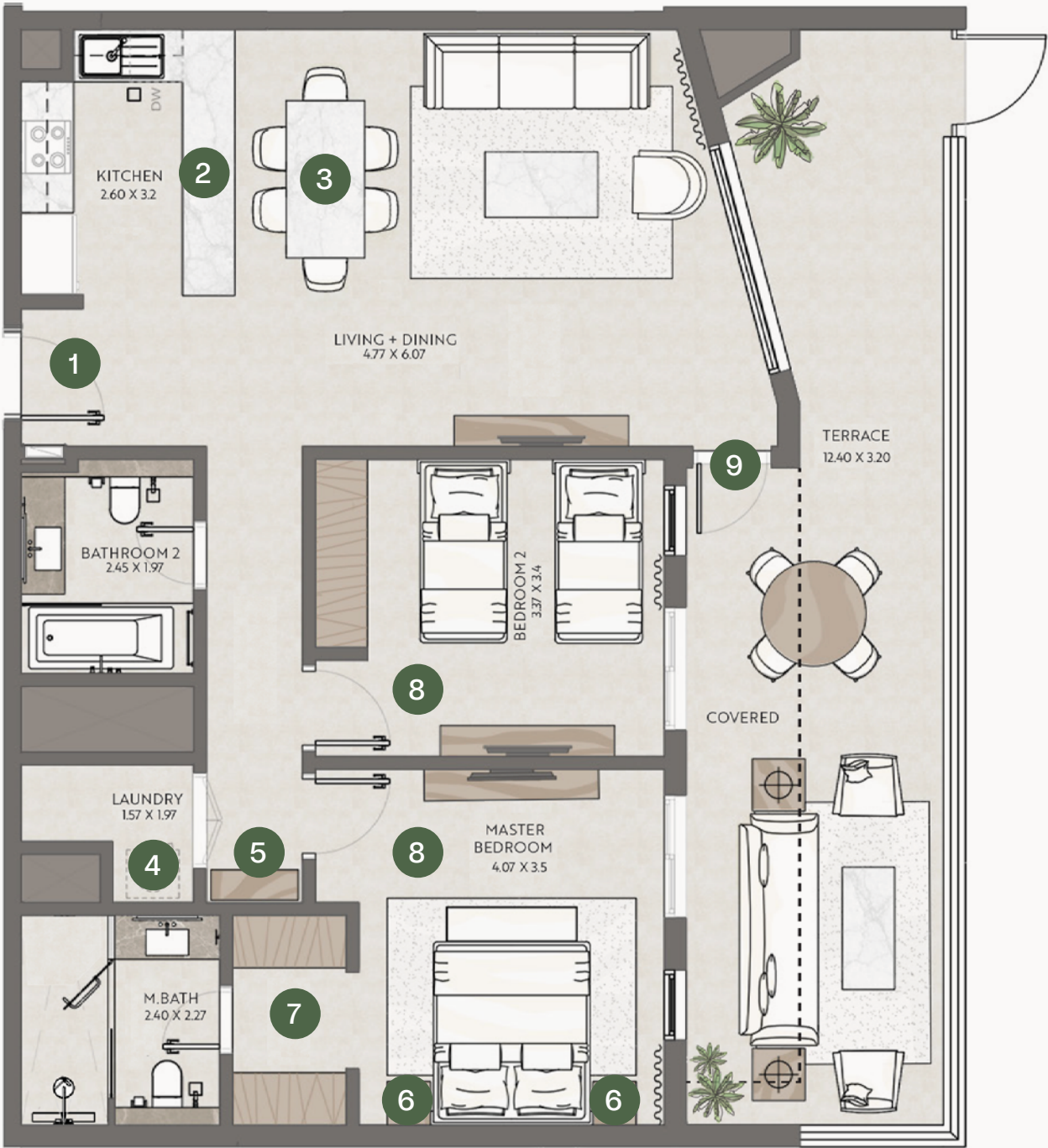
APARTMENT HIGHLIGHTS

- 1. An entrance which opens into an open space, and not a wall.
- 2. A U-Shaped Kitchen with dedicated Platform.
- 3. A dedicated space for a 4 to 6-seater dining area, separate from the kitchen space.
- 4. A separate laundry room, so that you have enough storage space in the kitchen.
- 5. A dedicated storage space for your belongings.
- 6. A master bedroom where you can place a bed as well as side tables and still have space to move around.
- 7. All our apartments have walk-in wardrobes with well planned storage spaces.
- 8. Both bedrooms are master size bedrooms.
- 9. Access to a spacious Balcony.

SUITE AREA (SQFT)
1,050.56 SQ. FT.

BALCONY AREA
401.93 SQ. FT.

TOTAL AREA
1,452.5 SQ. FT.



FLOOR PLANS

FIRST FLOOR



*Scheduled Q2025 4. Dimensions on floor plans are approximate. Final dimensions and floor plans may vary and are subject to change without notice. The developer reserves the right to make revisions. Areas are measured in accordance with the Dubai Land Department standards. Internal Furniture/ Equipment and Landscaping are indicative. Artistic renderings and images are for illustrative purpose only and are subject to change without notice. T&C Apply.

TWO BEDROOM - TYPE 2C

APARTMENT HIGHLIGHTS

- 1. An entrance which opens into an open space, and not a wall.
- 2. A U-Shaped Kitchen with dedicated Platform.
- 3. A dedicated space for a 4 to 6-seater dining area, separate from the kitchen space.
- 4. A separate laundry room, so that you have enough storage space in the kitchen.
- 5. A dedicated storage space for your belongings.
- 6. A master bedroom where you can place a bed as well as side tables and still have space to move around.
- 7. All our apartments have walk-in wardrobes with well planned storage spaces.
- 8. Both bedrooms are master size bedrooms.
- 9. Access to a spacious Balcony.

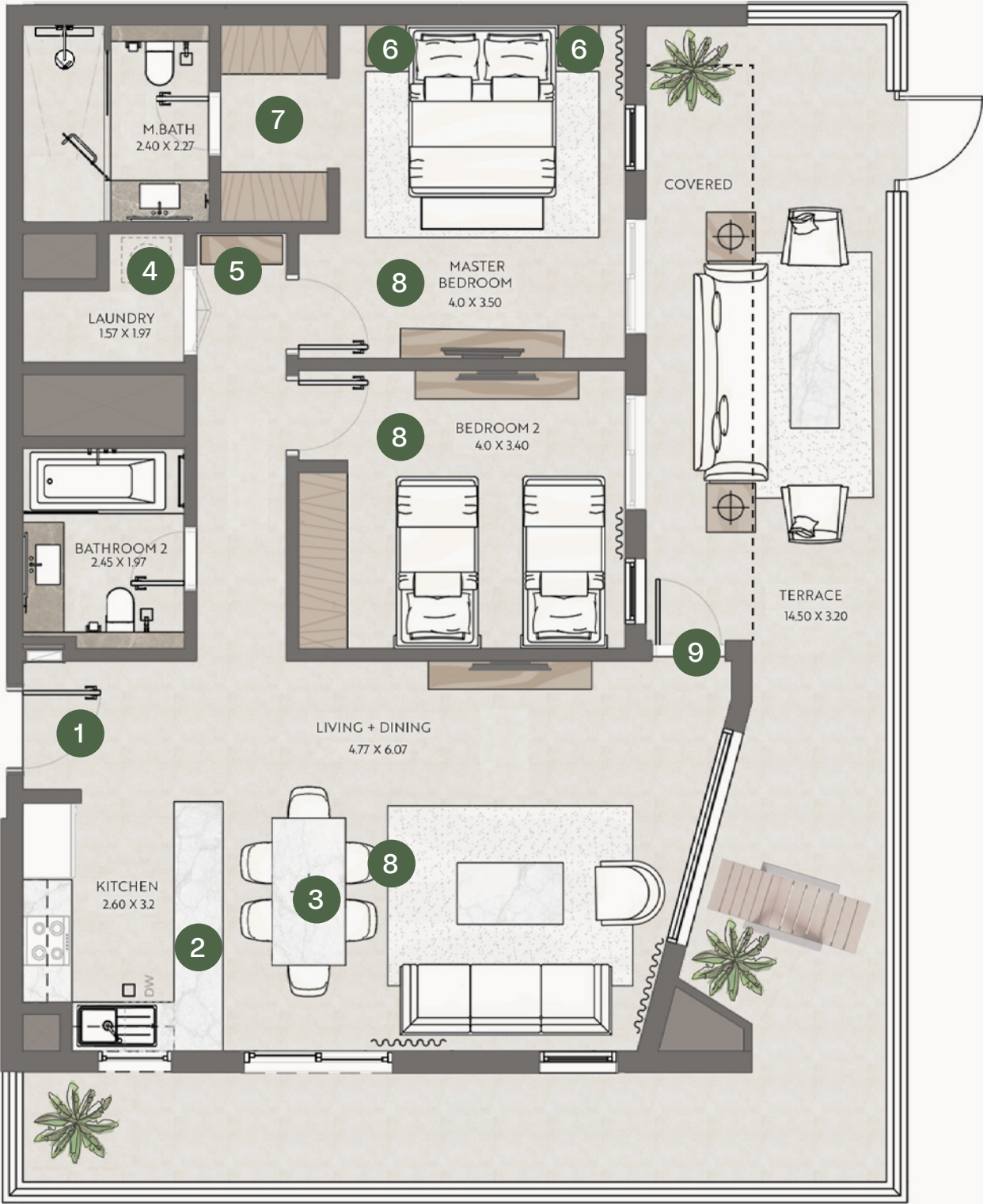
SUITE AREA (SQFT)
1,054.76 SQ. FT.
BALCONY AREA
586.42 SQ. FT.
TOTAL AREA
1,641.18 SQ. FT.

FLOOR PLANS

FIRST FLOOR



*Scheduled Q2025 4. Dimensions on floor plans are approximate. Final dimensions and floor plans may vary and are subject to change without notice. The developer reserves the right to make revisions. Areas are measured in accordance with the Dubai Land Department standards. Internal Furniture/ Equipment and Landscaping are indicative. Artistic renderings and images are for illustrative purpose only and are subject to change without notice. T&C Apply.



TWO BEDROOM - TYPE 2D

APARTMENT HIGHLIGHTS

- 1. An entrance which opens into an open space, and not a wall.
- 2. A U-Shaped Kitchen with dedicated Platform.
- 3. A dedicated space for a 4 to 6-seater dining area, separate from the kitchen space.
- 4. A separate laundry room, so that you have enough storage space in the kitchen.
- 5. A dedicated storage space for your belongings.
- 6. A master bedroom where you can place a bed as well as side tables and still have space to move around.
- 7. All our apartments have walk-in wardrobes with well planned storage spaces.
- 8. Both bedrooms are master size bedrooms.
- 9. Access to 2 spacious Balconies that surrounds the entire space.

SUITE AREA (SQFT)
1,054.65 SQ. FT.

BALCONY AREA
255.32 SQ. FT.

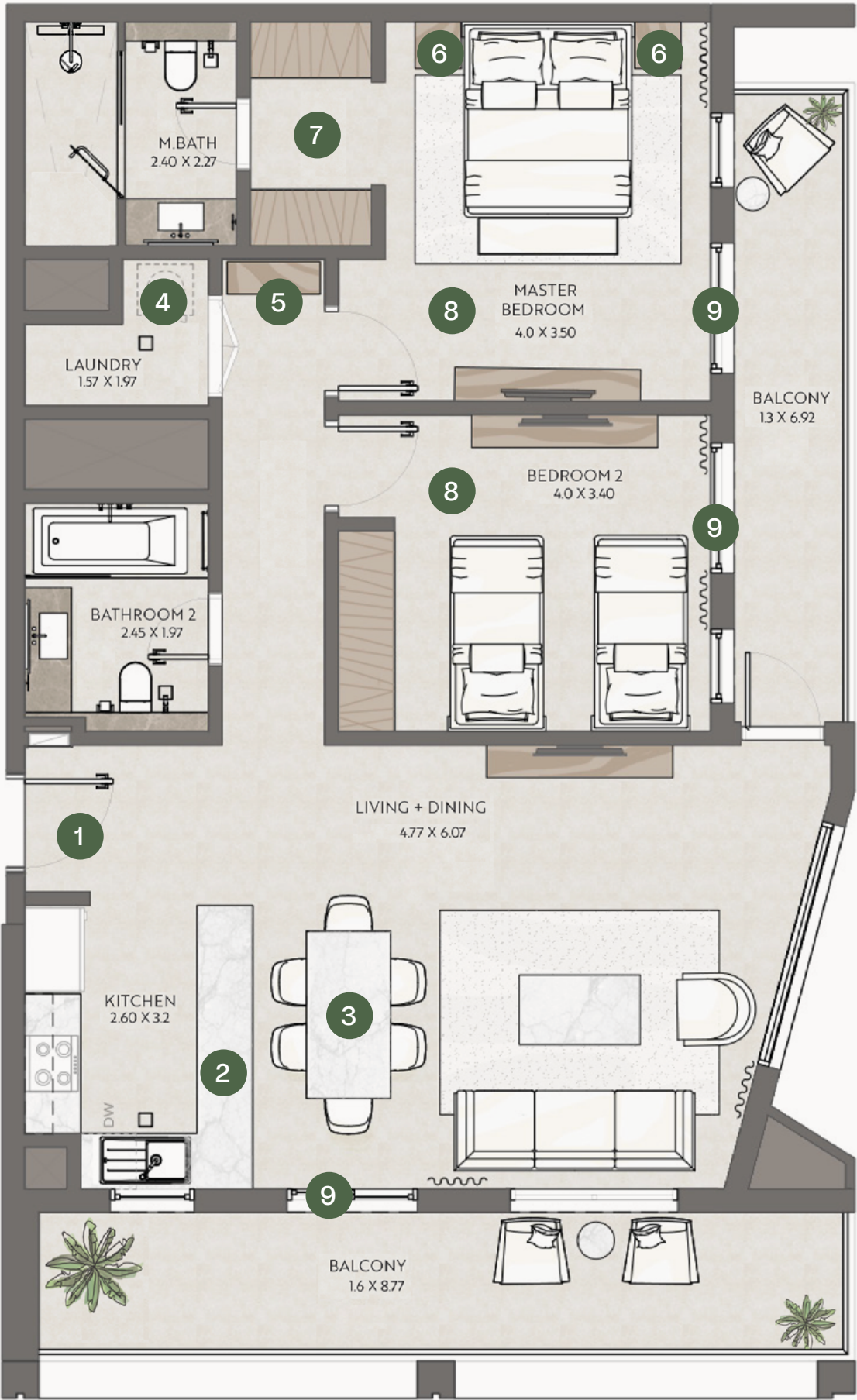
TOTAL AREA
1,310 SQ. FT.

FLOOR PLANS

SECOND TO FOURTH FLOOR



*Scheduled Q2025 4. Dimensions on floor plans are approximate. Final dimensions and floor plans may vary and are subject to change without notice. The developer reserves the right to make revisions. Areas are measured in accordance with the Dubai Land Department standards. Internal Furniture/ Equipment and Landscaping are indicative. Artistic renderings and images are for illustrative purpose only and are subject to change without notice. T&C Apply.



TWO BEDROOM - TYPE 3A

APARTMENT HIGHLIGHTS

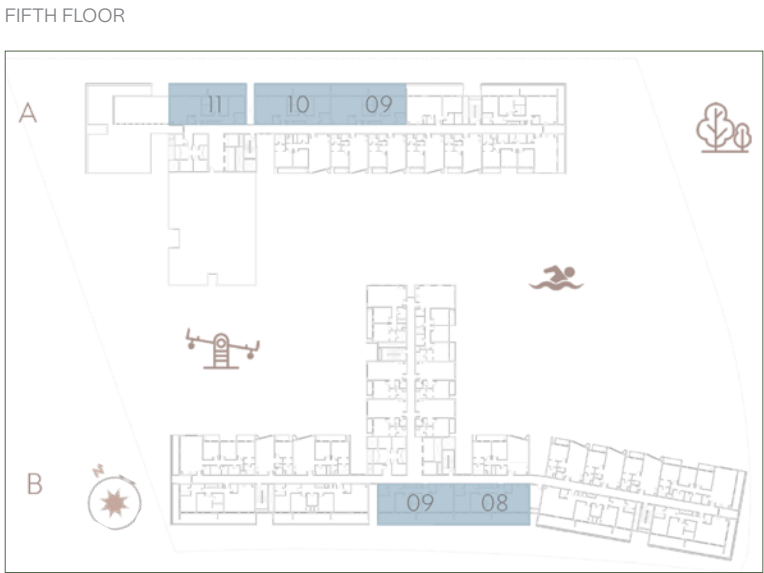
- 1. An entrance which opens into an open space, and not a wall.
- 2. A U-Shaped Kitchen with dedicated Platform.
- 3. A dedicated space for a 4 to 6-seater dining area, separate from the kitchen space.
- 4. A separate laundry room, so that you have enough storage space in the kitchen.
- 5. A master bedroom where you can place a bed as well as side tables and still have space to move around.
- 6. All our apartments have walk-in wardrobes with well planned storage spaces.
- 7. Both bedrooms are master size bedrooms.
- 8. A spacious study room for your family.
- 9. Access to a spacious Balcony from all rooms that surrounds the entire space.

SUITE AREA (SQFT)
1,153.74 SQ. FT.

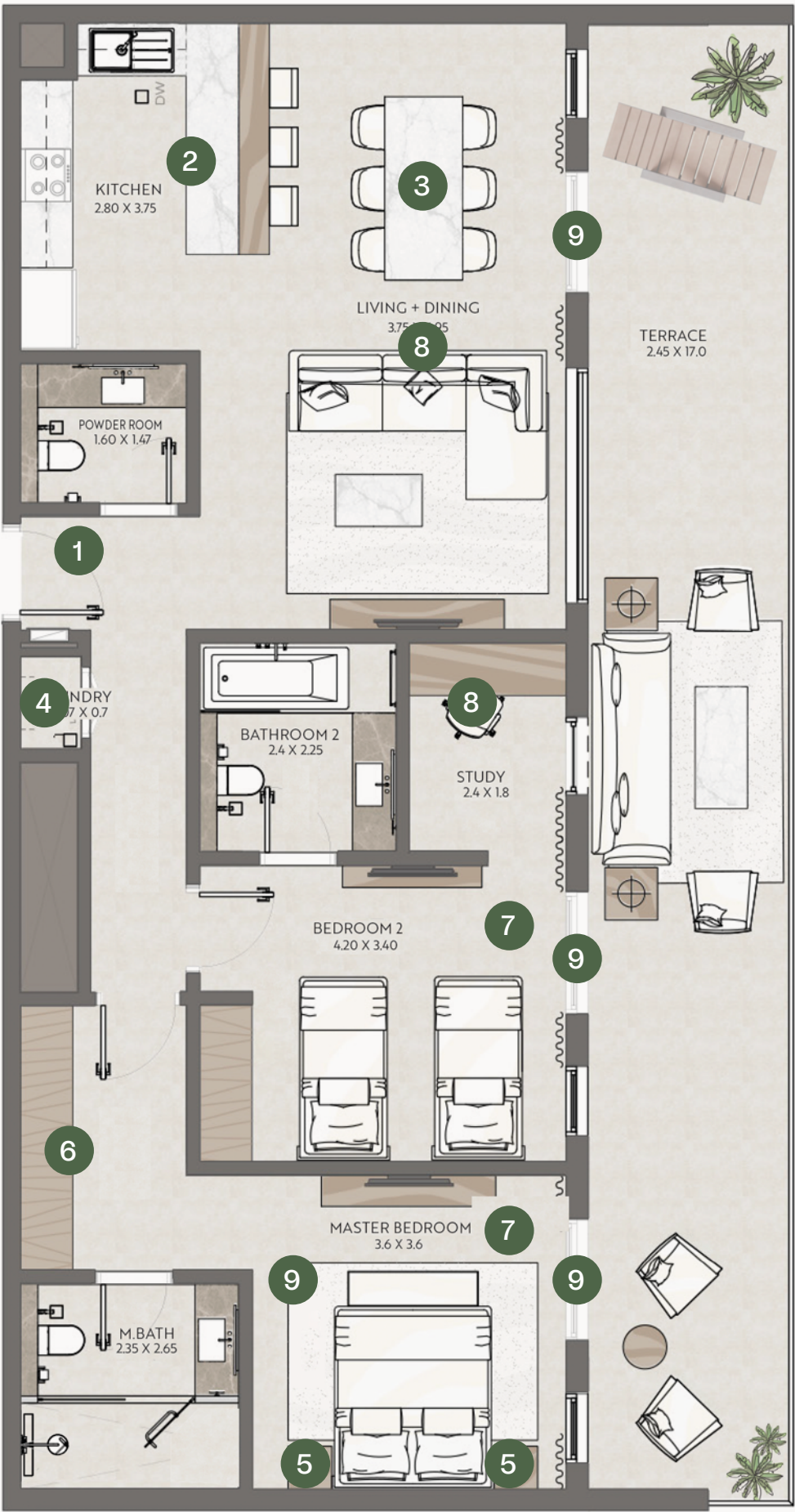
BALCONY AREA
456.56 SQ. FT.

TOTAL AREA
1,610.3 SQ. FT.

FLOOR PLANS



*Scheduled Q2025 4. Dimensions on floor plans are approximate. Final dimensions and floor plans may vary and are subject to change without notice. The developer reserves the right to make revisions. Areas are measured in accordance with the Dubai Land Department standards. Internal Furniture/ Equipment and Landscaping are indicative. Artistic renderings and images are for illustrative purpose only and are subject to change without notice. T&C Apply.



TWO BEDROOM - TYPE 3B

APARTMENT HIGHLIGHTS

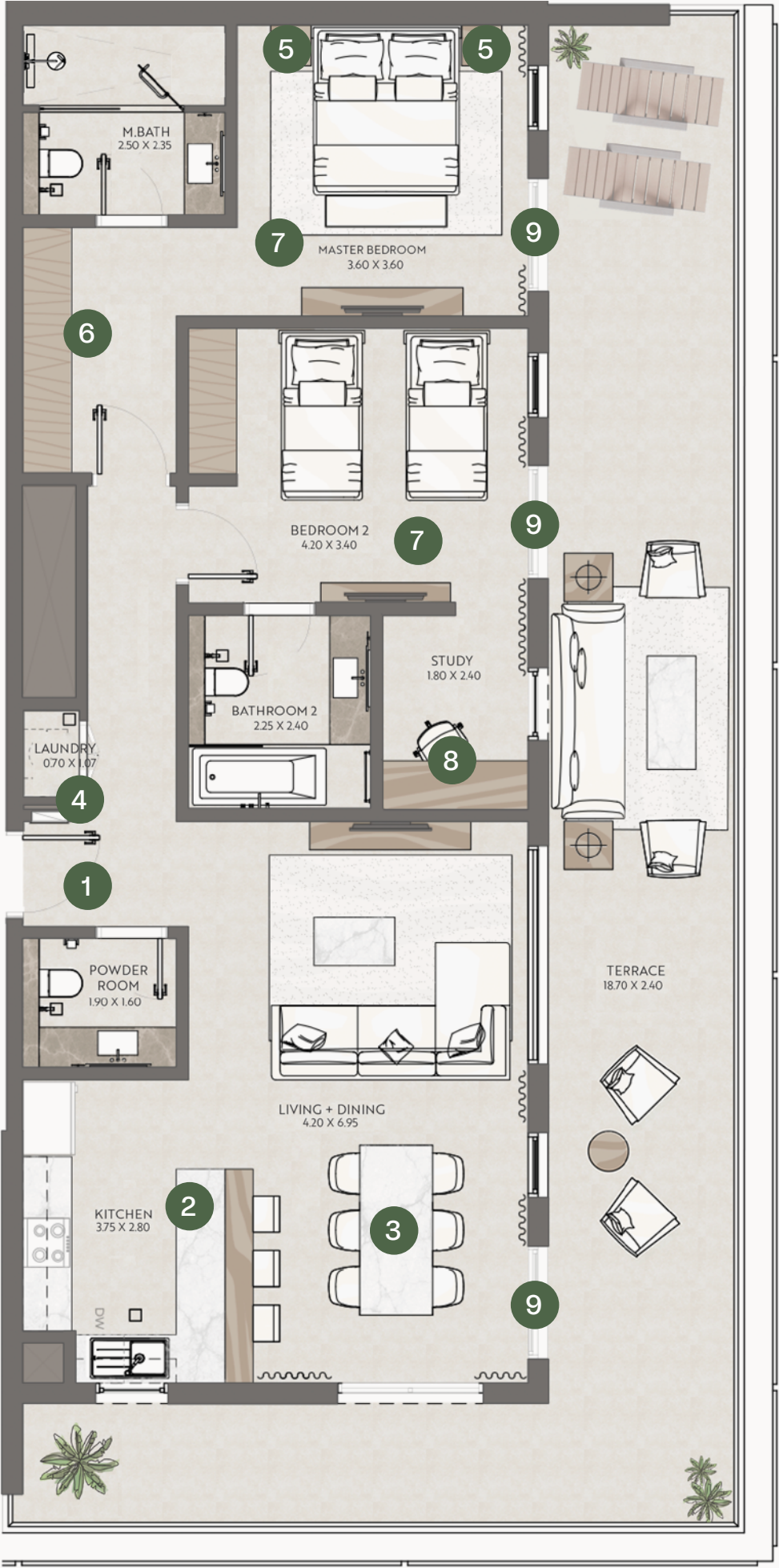
- 1. An entrance which opens into an open space, and not a wall.
- 2. A U-Shaped Kitchen with dedicated Platform.
- 3. A dedicated space for a 4 to 6-seater dining area, separate from the kitchen space.
- 4. A separate laundry room, so that you have enough storage space in the kitchen.
- 5. A master bedroom where you can place a bed as well as side tables and still have space to move around.
- 6. All our apartments have walk-in wardrobes with well planned storage spaces.
- 7. Both bedrooms are master size bedrooms.
- 8. A spacious study room for your family.
- 9. Access to a spacious Balcony from all rooms that surrounds the entire space.

SUITE AREA (SQFT)
1,154.8 SQ. FT.
BALCONY AREA
615.34 SQ. FT.
TOTAL AREA
1,770.16 SQ. FT.

FLOOR PLANS



*Scheduled Q2025 4. Dimensions on floor plans are approximate. Final dimensions and floor plans may vary and are subject to change without notice. The developer reserves the right to make revisions. Areas are measured in accordance with the Dubai Land Department standards. Internal Furniture/ Equipment and Landscaping are indicative. Artistic renderings and images are for illustrative purpose only and are subject to change without notice. T&C Apply.



THREE BEDROOM - TYPE 1A

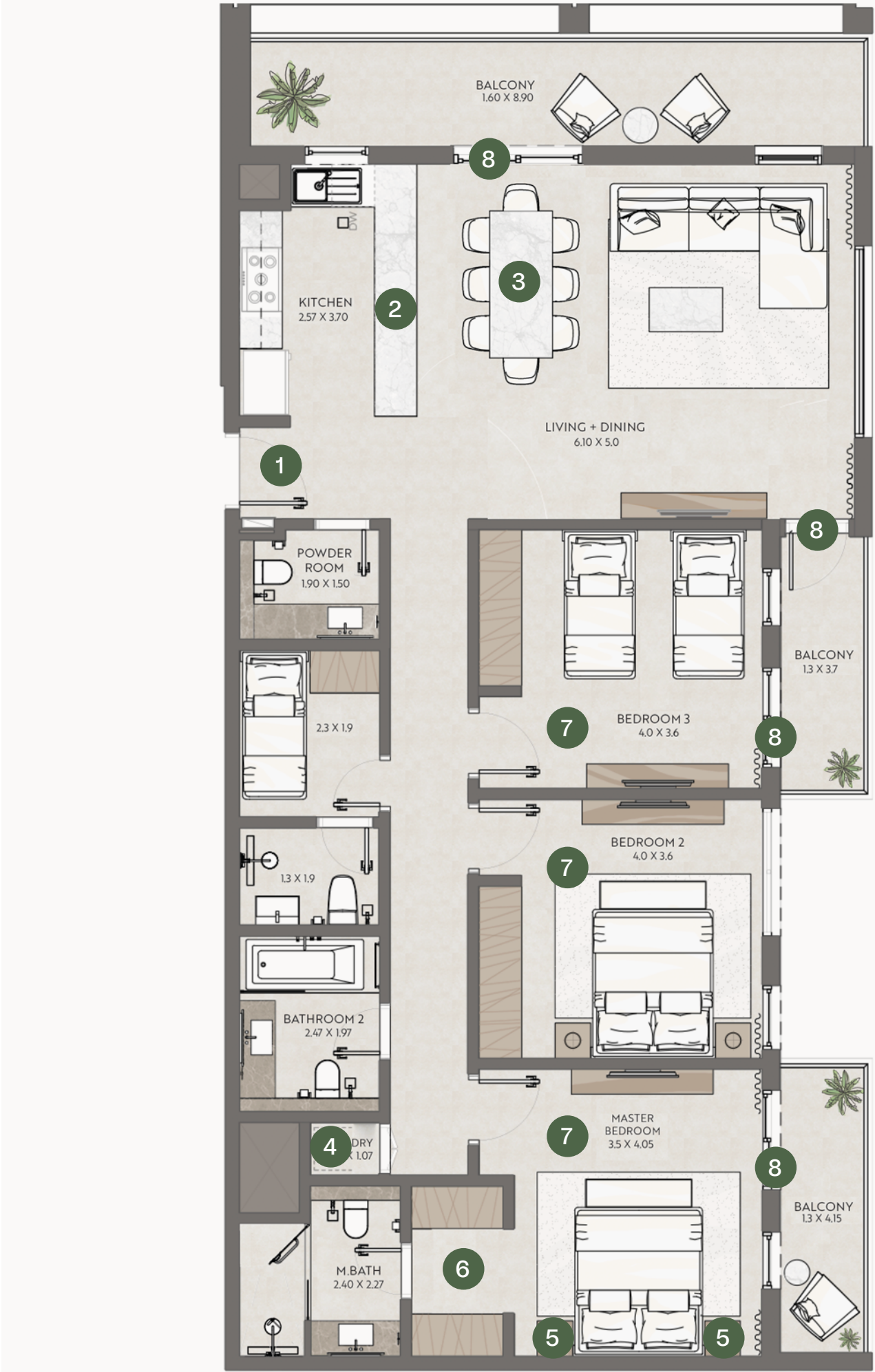
APARTMENT HIGHLIGHTS

- 1. An entrance which opens into an open space, and not a wall.
- 2. A U-Shaped Kitchen with dedicated Platform.
- 3. A dedicated space for a 4 to 6-seater dining area, separate from the kitchen space.
- 4. A separate laundry room, so that you have enough storage space in the kitchen.
- 5. A master bedroom where you can place a bed as well as side tables and still have space to move around.
- 6. All our apartments have walk-in wardrobes with well planned storage spaces.
- 7. All 3 bedrooms are master size bedrooms.
- 8. Access to 3 spacious Balconies from all rooms that surrounds the entire space.

SUITE AREA (SQFT)
1,440 SQ. FT.

BALCONY AREA
273.34 SQ. FT.

TOTAL AREA
1,713.4 SQ. FT.



FLOOR PLANS

SECOND TO FOURTH FLOOR



FIFTH FLOOR



*Scheduled Q2025 4. Dimensions on floor plans are approximate. Final dimensions and floor plans may vary and are subject to change without notice. The developer reserves the right to make revisions. Areas are measured in accordance with the Dubai Land Department standards. Internal Furniture/ Equipment and Landscaping are indicative. Artistic renderings and images are for illustrative purpose only and are subject to change without notice. T&C Apply.

THREE BEDROOM - TYPE 1B (WITH A MAID'S ROOM)

APARTMENT HIGHLIGHTS

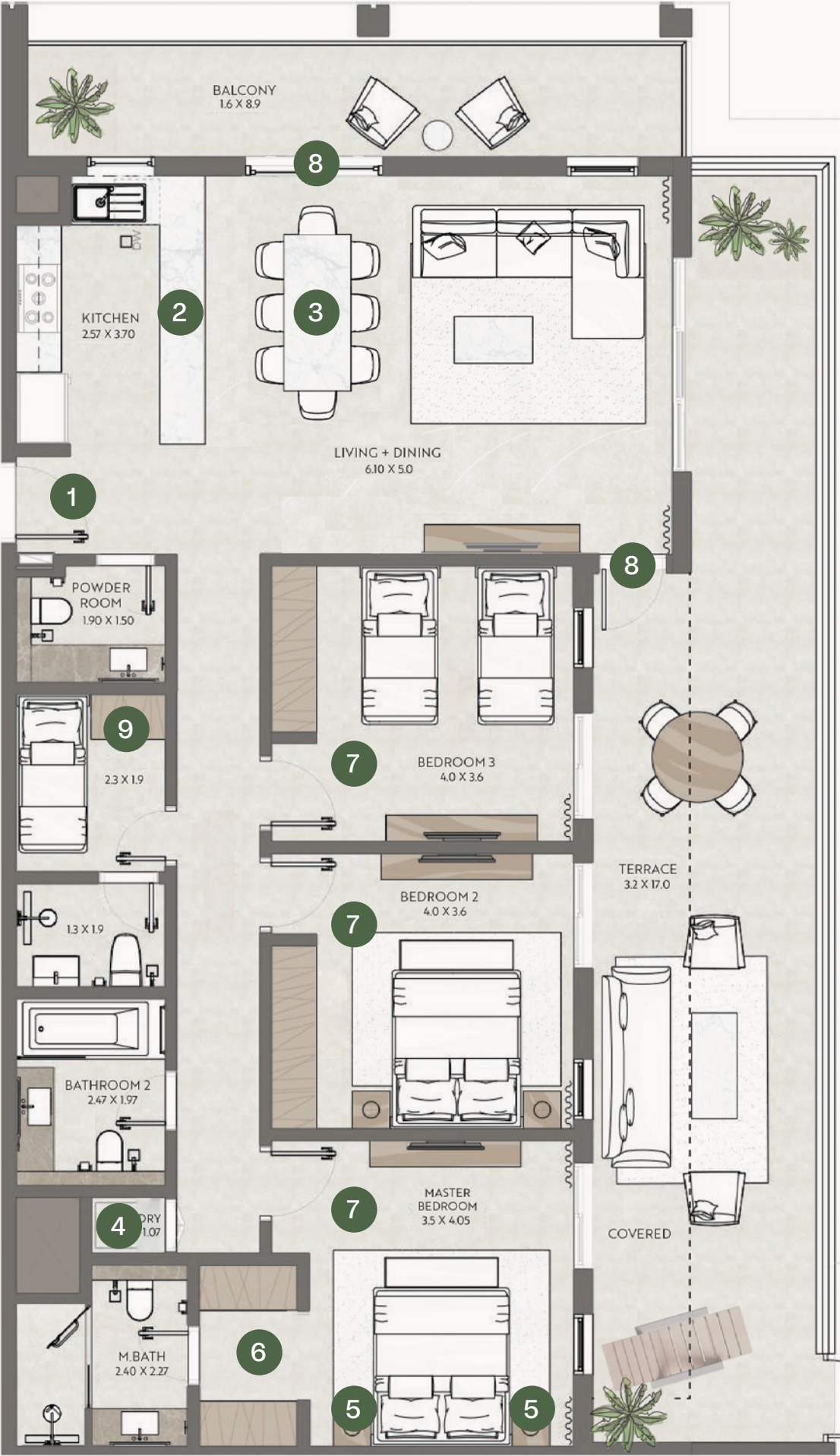
- 1. An entrance which opens into an open space, and not a wall.
- 2. A U-Shaped Kitchen with dedicated Platform.
- 3. A dedicated space for a 4 to 6-seater dining area, separate from the kitchen space.
- 4. A separate laundry room, so that you have enough storage space in the kitchen.
- 5. A master bedroom where you can place a bed as well as side tables and still have space to move around.
- 6. All our apartments have walk-in wardrobes with well planned storage spaces.
- 7. All 3 bedrooms are master size bedrooms.
- 8. Access to 2 spacious Balconies that surrounds the entire space.
- 9. A maid's room with a dedicated washroom.

SUITE AREA (SQFT)
1,441.93 SQ. FT.
BALCONY AREA
671.48 SQ. FT.
TOTAL AREA
2,113.41 SQ. FT.

FLOOR PLANS



*Scheduled Q2025 4. Dimensions on floor plans are approximate. Final dimensions and floor plans may vary and are subject to change without notice. The developer reserves the right to make revisions. Areas are measured in accordance with the Dubai Land Department standards. Internal Furniture/ Equipment and Landscaping are indicative. Artistic renderings and images are for illustrative purpose only and are subject to change without notice. T&C Apply.



THREE BEDROOM - TYPE 1C (WITH A MAID'S ROOM)

APARTMENT HIGHLIGHTS

- 1. An entrance which opens into an open space, and not a wall.
- 2. A U-Shaped Kitchen with dedicated Platform.
- 3. A dedicated space for a 4 to 6-seater dining area, separate from the kitchen space.
- 4. A separate laundry room, so that you have enough storage space in the kitchen.
- 5. A master bedroom where you can place a bed as well as side tables and still have space to move around.
- 6. All our apartments have walk-in wardrobes with well planned storage spaces.
- 7. All 3 bedrooms are master size bedrooms.
- 8. Access to 2 spacious Balconies.
- 9. A maid's room with a dedicated washroom.

SUITE AREA (SQFT)
1,441.45 SQ. FT.

BALCONY AREA
112.81 SQ. FT.

TOTAL AREA
1,554.26 SQ. FT.

FLOOR PLANS

SECOND FLOOR



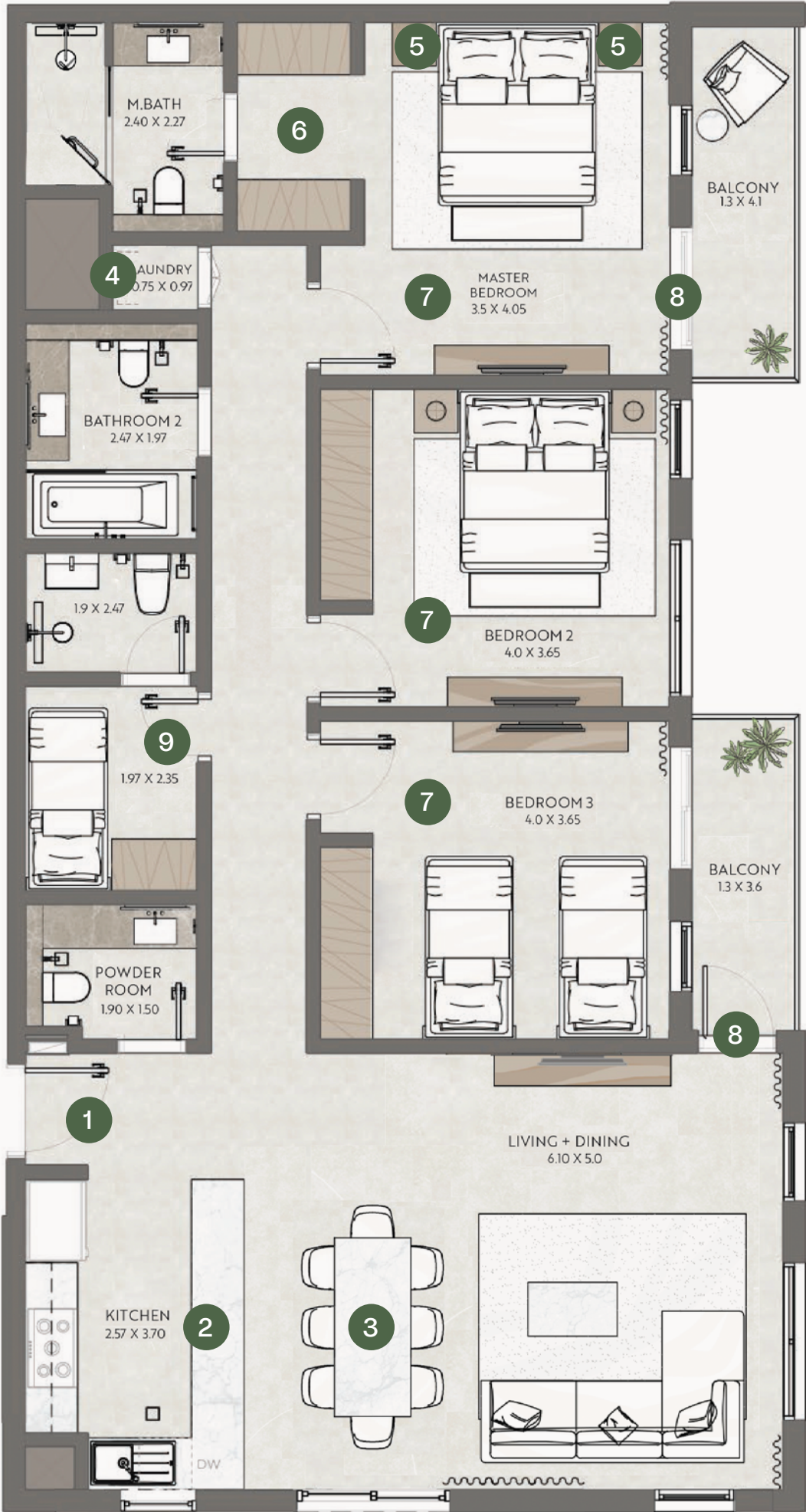
THIRD & FOURTH FLOOR



FIFTH FLOOR



*Scheduled Q2025 4. Dimensions on floor plans are approximate. Final dimensions and floor plans may vary and are subject to change without notice. The developer reserves the right to make revisions. Areas are measured in accordance with the Dubai Land Department standards. Internal Furniture/ Equipment and Landscaping are indicative. Artistic renderings and images are for illustrative purpose only and are subject to change without notice. T&C Apply.



THREE BEDROOM - TYPE 1D (WITH A MAID'S ROOM)

APARTMENT HIGHLIGHTS

- 1. An entrance which opens into an open space, and not a wall.
- 2. A U-Shaped Kitchen with dedicated Platform.
- 3. A dedicated space for a 4 to 6-seater dining area, separate from the kitchen space.
- 4. A separate laundry room, so that you have enough storage space in the kitchen.
- 5. A master bedroom where you can place a bed as well as side tables and still have space to move around.
- 6. All our apartments have walk-in wardrobes with well planned storage spaces.
- 7. All 3 bedrooms are master size bedrooms.
- 8. Access to 2 spacious Balconies that surround the entire space.
- 9. A maid's room with a dedicated washroom.

SUITE AREA (SQFT)
1,444.78 SQ. FT.

BALCONY AREA
318.4 SQ. FT.

TOTAL AREA
1,763.19 SQ. FT.

FLOOR PLANS

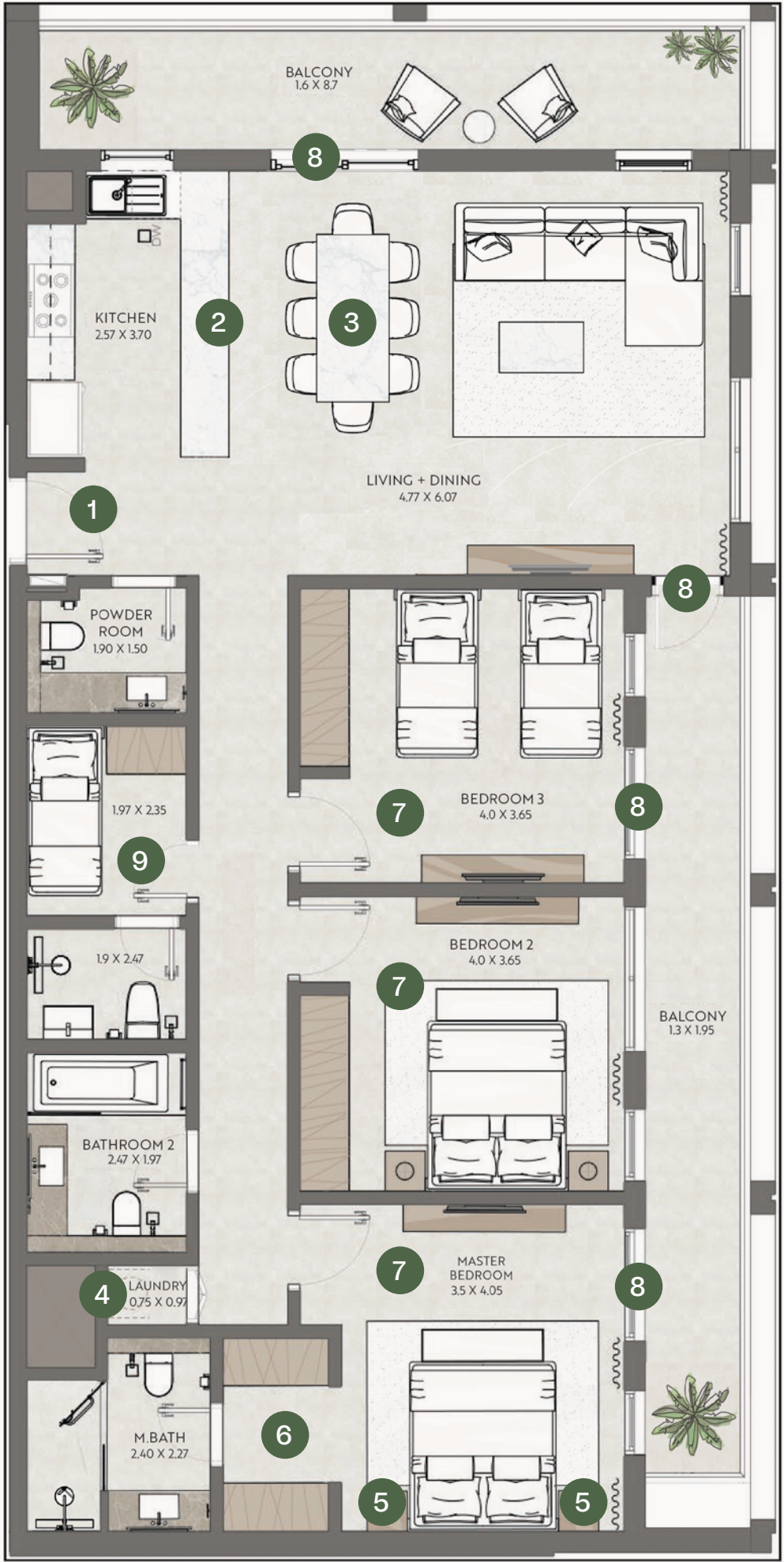
FIRST FLOOR



SECOND TO FOURTH FLOOR



*Scheduled Q2025 4. Dimensions on floor plans are approximate. Final dimensions and floor plans may vary and are subject to change without notice. The developer reserves the right to make revisions. Areas are measured in accordance with the Dubai Land Department standards. Internal Furniture/ Equipment and Landscaping are indicative. Artistic renderings and images are for illustrative purpose only and are subject to change without notice. T&C Apply.



THREE BEDROOM - TYPE 2A

APARTMENT HIGHLIGHTS

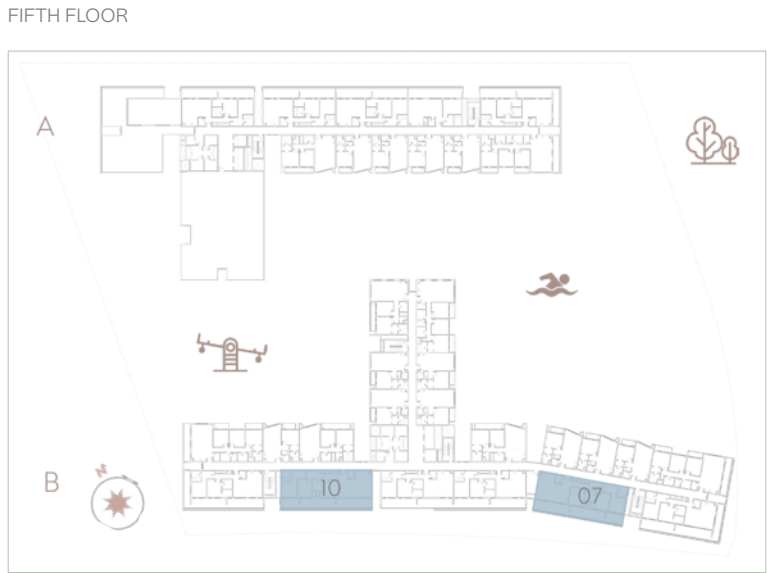
- 1. An entrance which opens into an open space, and not a wall.
- 2. A U-Shaped Kitchen with dedicated Platform.
- 3. A dedicated space for a 4 to 6-seater dining area, separate from the kitchen space.
- 4. A separate laundry room, so that you have enough storage space in the kitchen.
- 5. An additional storage space.
- 6. A master bedroom where you can place a bed as well as side tables and still have space to move around.
- 7. All our apartments have walk-in wardrobes with well planned storage spaces.
- 8. All 3 bedrooms are master size bedrooms.
- 9. Access to a spacious Balcony from all rooms that surround the entire space.

SUITE AREA (SQFT)
1,437.14 SQ. FT.

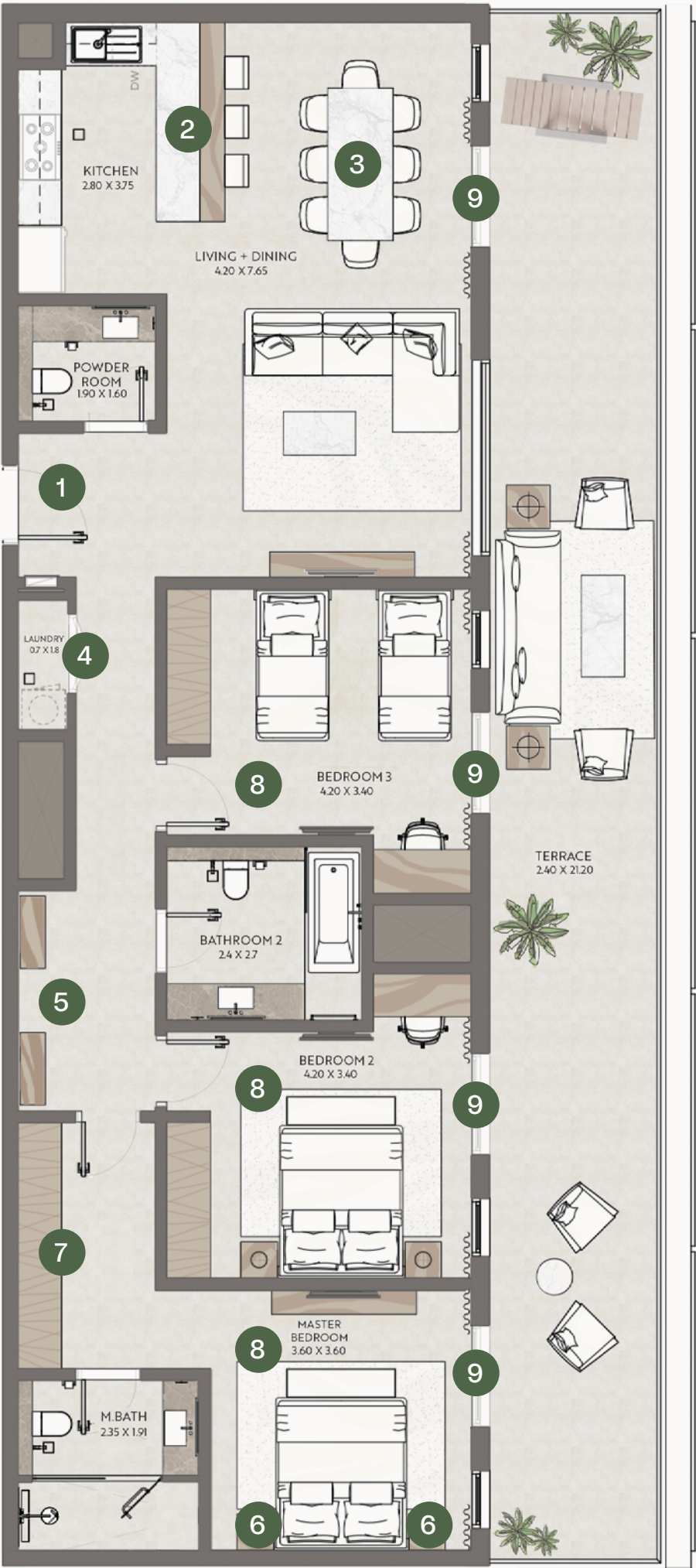
BALCONY AREA
569.95 SQ. FT.

TOTAL AREA
2,007.1 SQ. FT.

FLOOR PLANS



*Scheduled Q2025 4. Dimensions on floor plans are approximate. Final dimensions and floor plans may vary and are subject to change without notice. The developer reserves the right to make revisions. Areas are measured in accordance with the Dubai Land Department standards. Internal Furniture/ Equipment and Landscaping are indicative. Artistic renderings and images are for illustrative purpose only and are subject to change without notice. T&C Apply.





TARAF

A YAS HOLDING COMPANY

ABOUT TARAF

THE REAL ESTATE DIVISION OF YAS HOLDING

At Taraf, we believe in improving lives and lifestyles by building exquisite properties and communities that inspire happiness, wellness, and harmony. We develop highly-sought-after properties using our unique approach which focuses on three guiding principles.

WE SHAPE
ELEVATED
LIFESTYLES

WE CRAFT
EXCLUSIVE
PROPERTIES

WE CREATE
ENDURING
VALUE

ABOUT YAS HOLDING

AN ABU DHABI BASED 100% EMIRATI OWNED COMPANY
WITH MULTI-INDUSTRY BUSINESS PORTFOLIO

Yas Holding is a renowned UAE headquartered investment company with a multi-industry business portfolio spanning multiple sectors and more than 50 operating subsidiaries.

The Group is in growth mode, with expanding business interests in agriculture and food, healthcare, aviation, real estate, technology, and education. Yas Holding's diverse companies operate throughout the Middle East, Africa, Europe, and Asia.

TARAF

A YAS HOLDING COMPANY

www.tarafholding.com