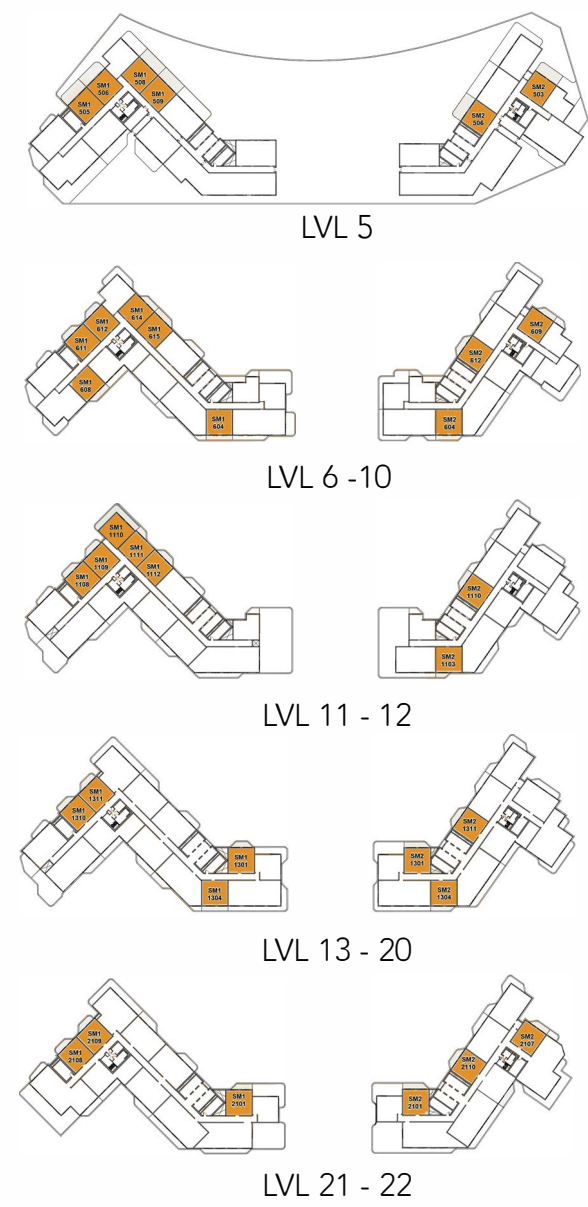


ONE BEDROOM (TYPE - 1)

No. of BR	1
Total Area	808 Sq.ft *

(*) Starting from

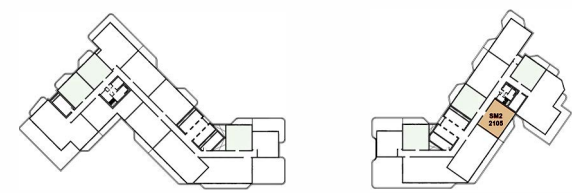
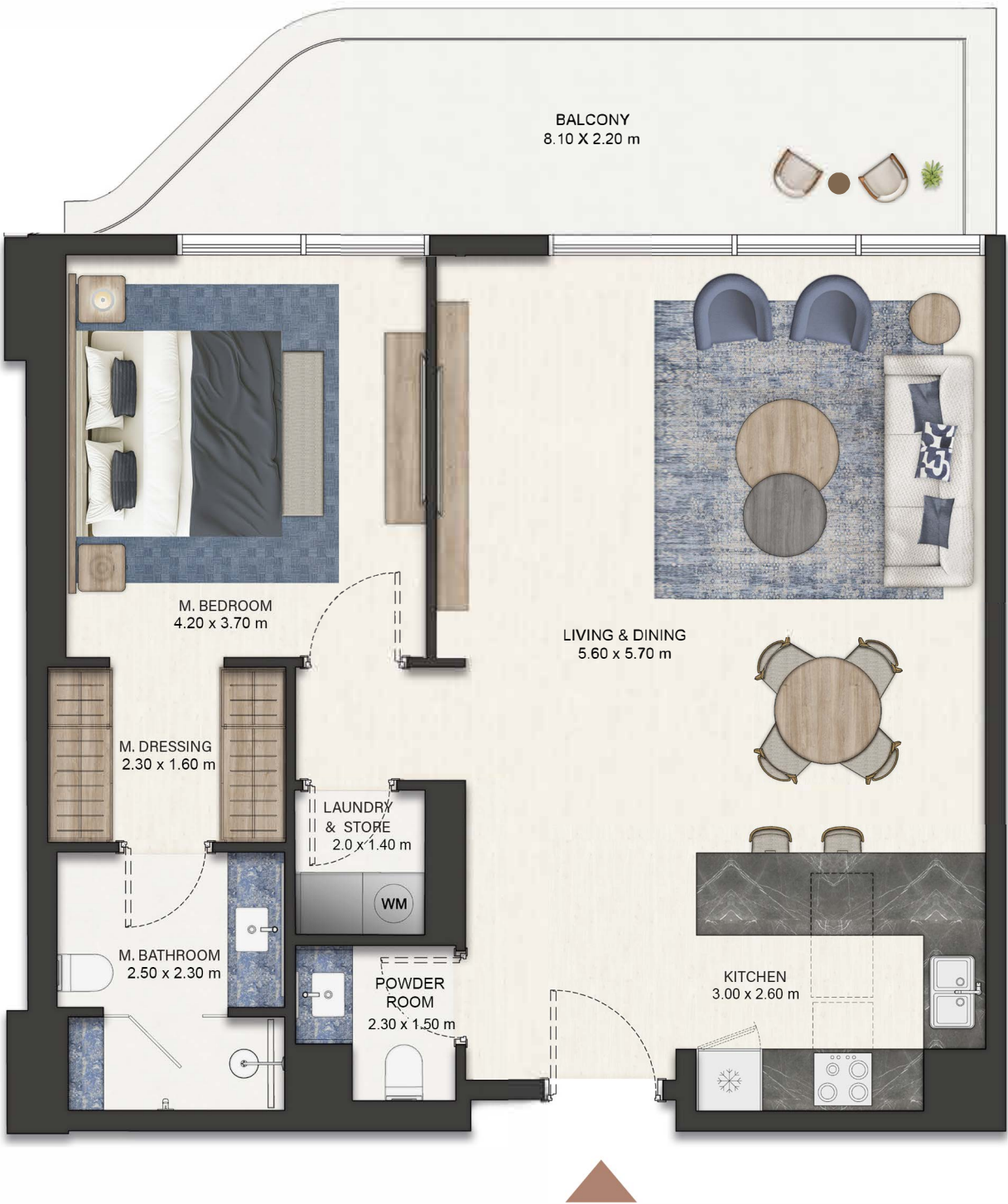


Disclaimer: Dimensions, apartment areas & layouts are indicative and may differ slightly during subsequent design development stages

ONE BEDROOM (TYPE - 1A)

No. of BR	1
Total Area	1,038 Sq.ft

(*) Starting from



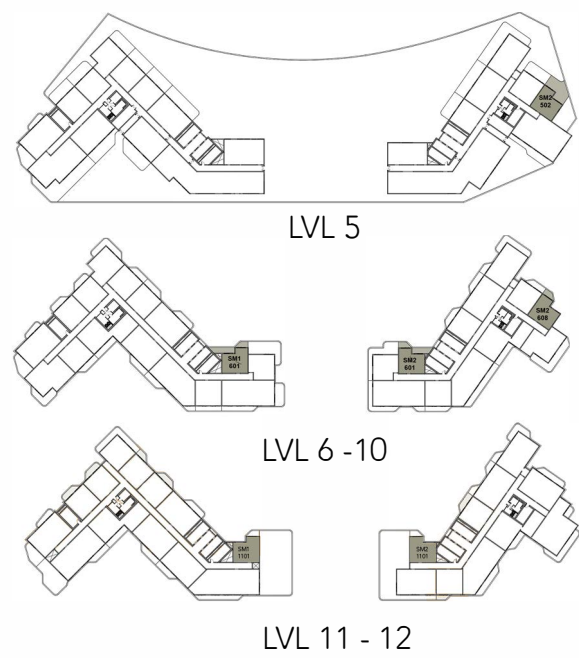
LVL 21 - 22

Disclaimer: Dimensions, apartment areas & layouts are indicative and may differ slightly during subsequent design development stages

ONE BEDROOM (TYPE - 2)

No. of BR	1
Total Area	731 Sq.ft *

(*) Starting from

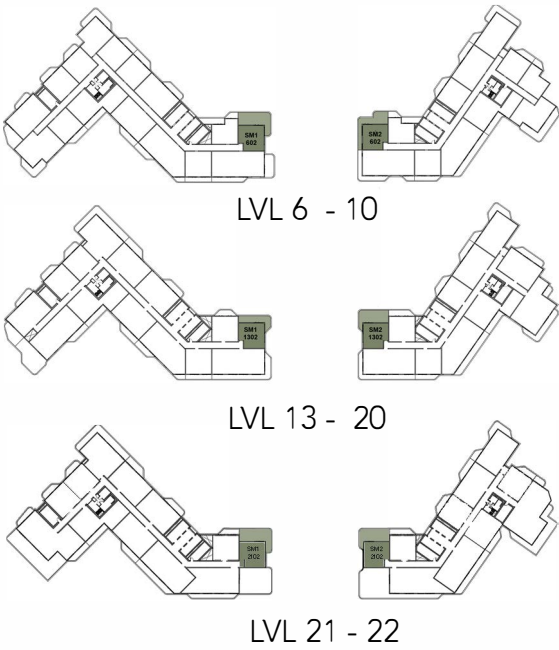


Disclaimer: Dimensions, apartment areas & layouts are indicative and may differ slightly during subsequent design development stages

ONE BEDROOM (TYPE - 3)

No. of BR	1
Total Area	1,020 Sq.ft *

(*) Starting from

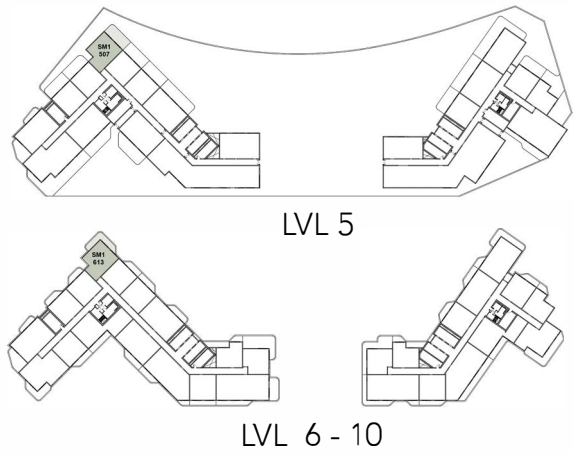


Disclaimer: Dimensions, apartment areas & layouts are indicative and may differ slightly during subsequent design development stages

ONE BEDROOM (TYPE - 4)

No. of BR	1
Total Area	1,157 Sq.ft *

(*) Starting from

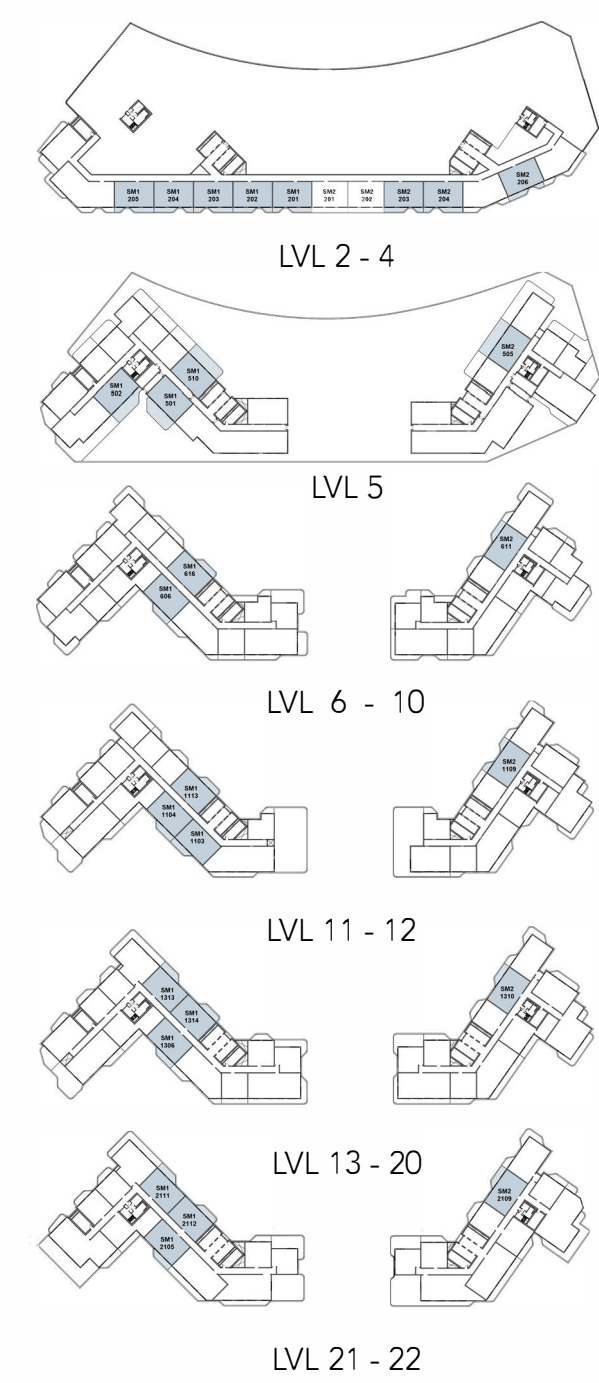


Disclaimer: Dimensions, apartment areas & layouts are indicative and may differ slightly during subsequent design development stages

TWO BEDROOM (TYPE - 1)

No. of BR	2
Total Area	1,273 Sq.ft *

(*) Starting from

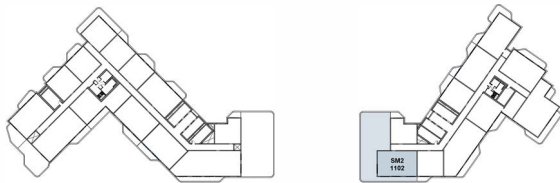


Disclaimer: Dimensions, apartment areas & layouts are indicative and may differ slightly during subsequent design development stages

TWO BEDROOM (TYPE - 1A)

No. of BR	2
Total Area	3,311 Sq.ft *

(*) Starting from



LVL 11-12

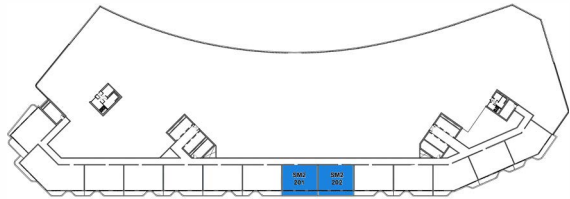
Disclaimer: Dimensions, apartment areas & layouts are indicative and may differ slightly during subsequent design development stages



TWO BEDROOM (TYPE - 1B)

No. of BR	2
Total Area	1,237 Sq.ft *

(*) Starting from



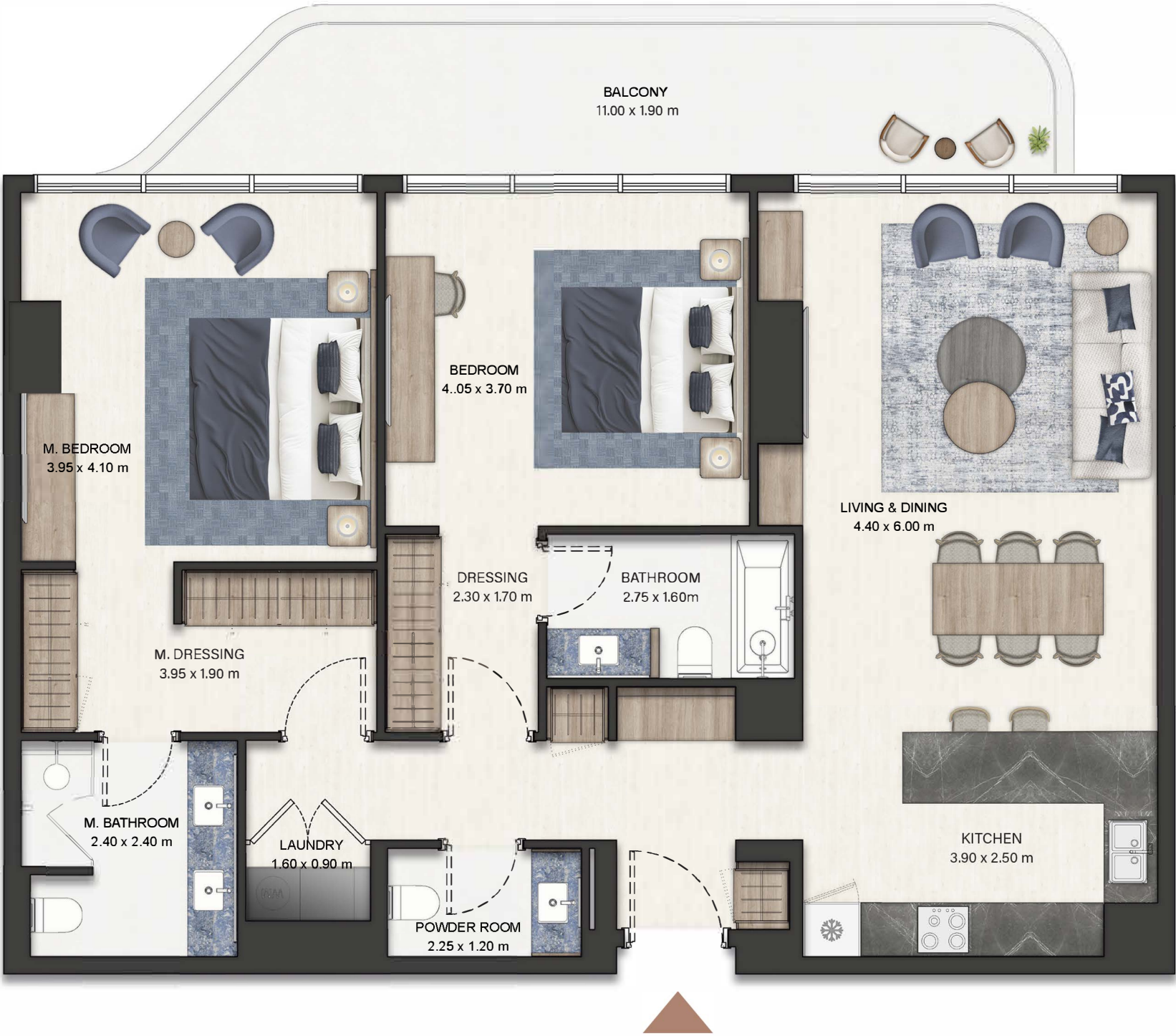
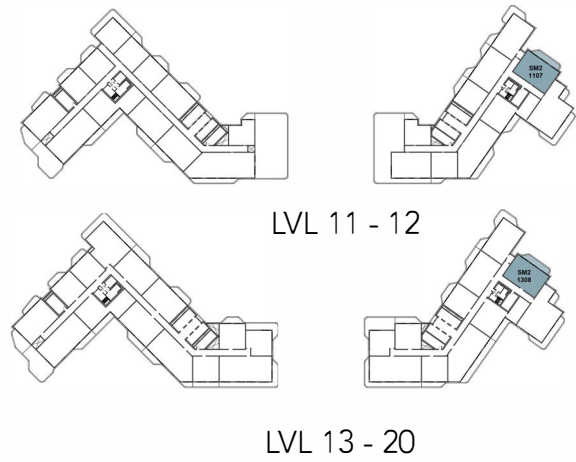
LVL 2 - 4



TWO BEDROOM (TYPE - 2)

No. of BR	2
Total Area	1,284 Sq.ft *

(*) Starting from

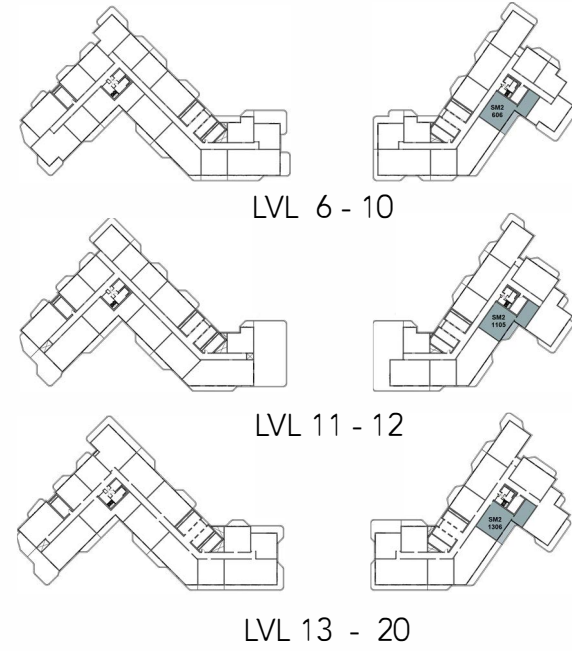


Disclaimer: Dimensions, apartment areas & layouts are indicative and may differ slightly during subsequent design development stages

TWO BEDROOM (TYPE - 3)

No. of BR	2
Total Area	1,326 Sq.ft *

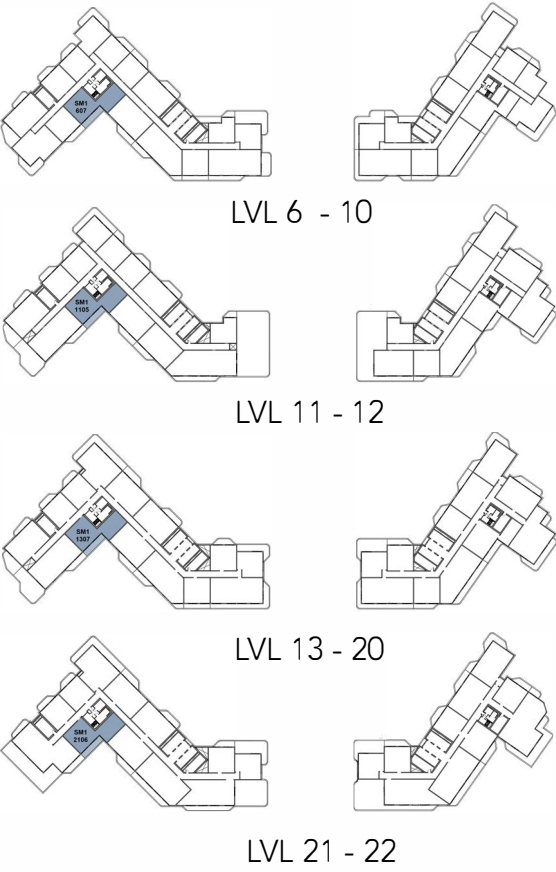
(*) Starting from



TWO BEDROOM (TYPE - 4)

No. of BR	2
Total Area	1,428 Sq.ft *

(*) Starting from

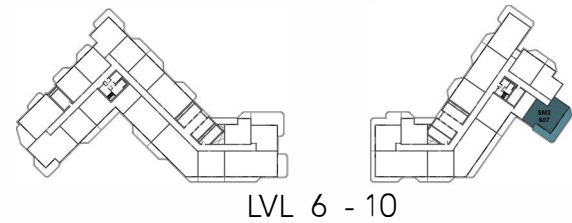


Disclaimer: Dimensions, apartment areas & layouts are indicative and may differ slightly during subsequent design development stages

TWO BEDROOM (TYPE - 5)

No. of BR	2
Total Area	1,488 Sq.ft *

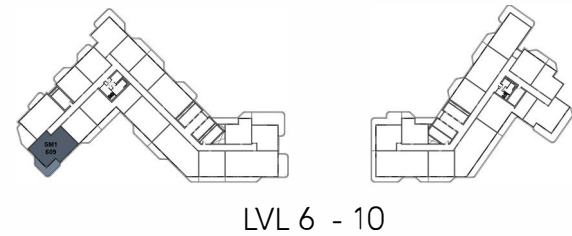
(*) Starting from



TWO BEDROOM (TYPE - 6)

No. of BR	2
Total Area	1,499 Sq.ft *

(*) Starting from

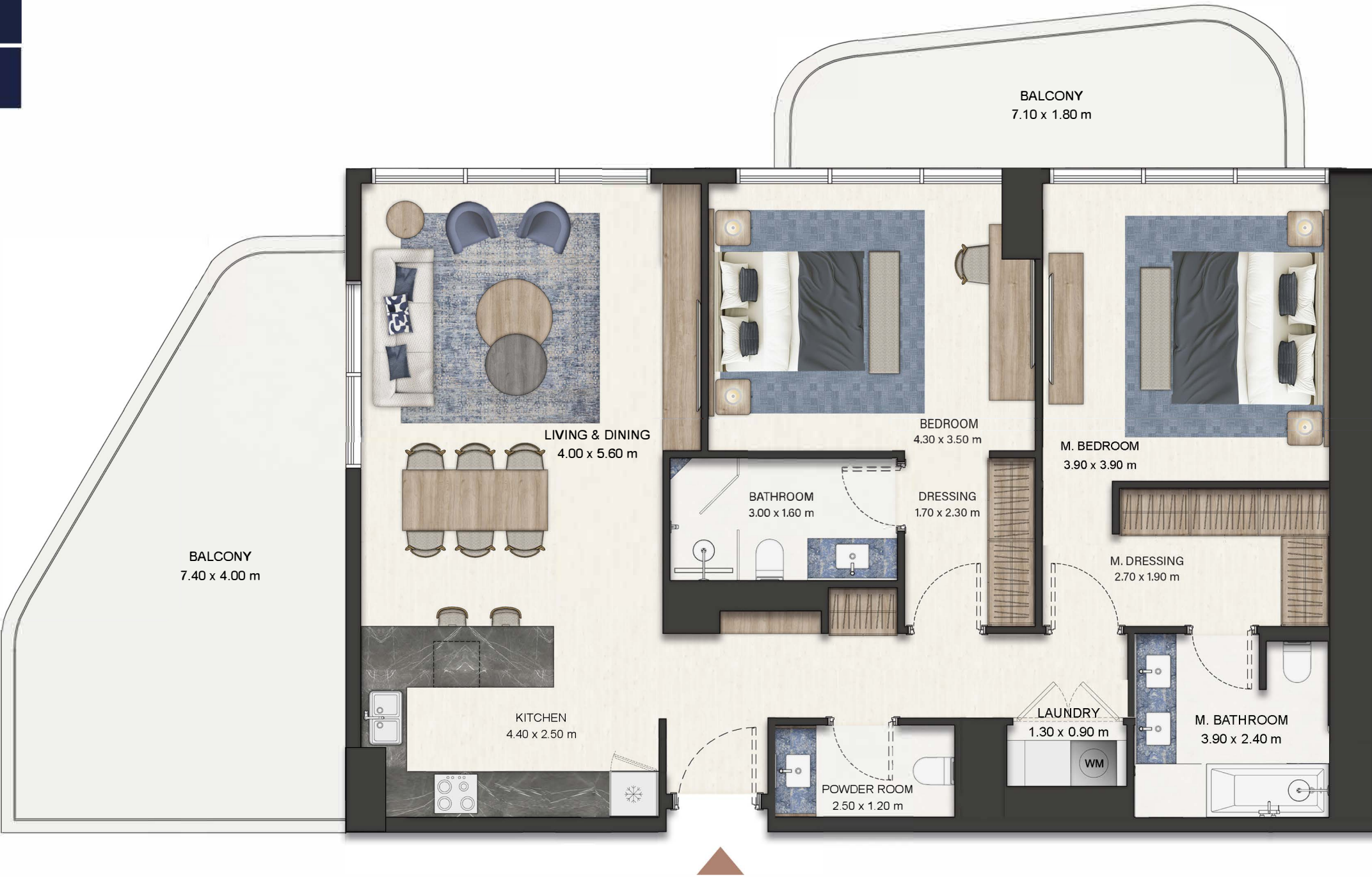
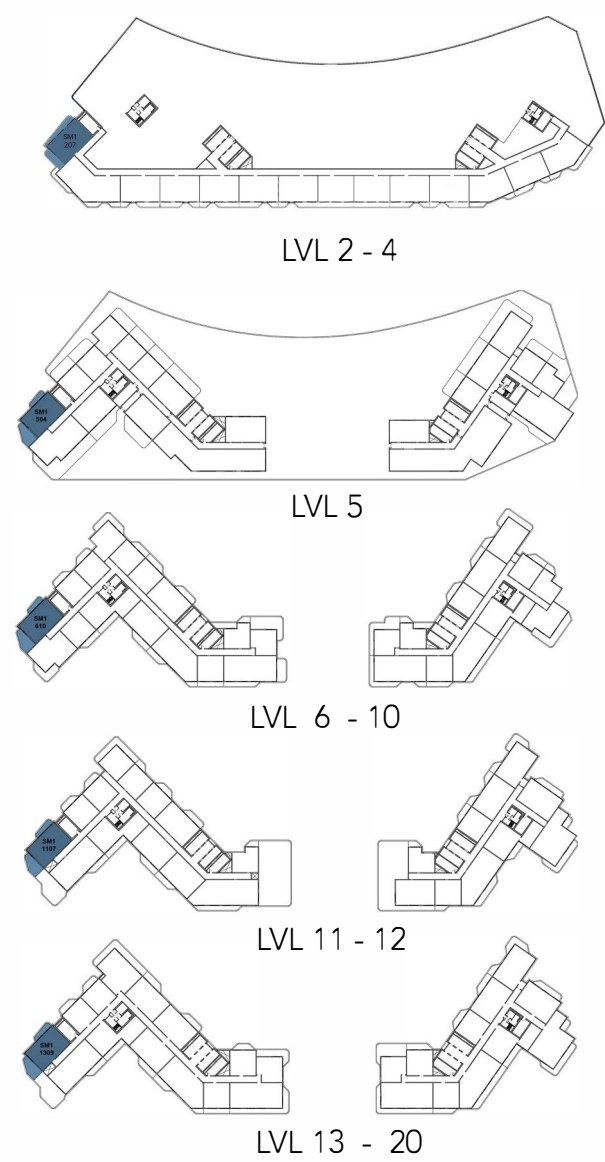


Disclaimer: Dimensions, apartment areas & layouts are indicative and may differ slightly during subsequent design development stages

TWO BEDROOM (TYPE - 1)

No. of BR	2
Total Area	1,354 Sq.ft *

(*) Starting from

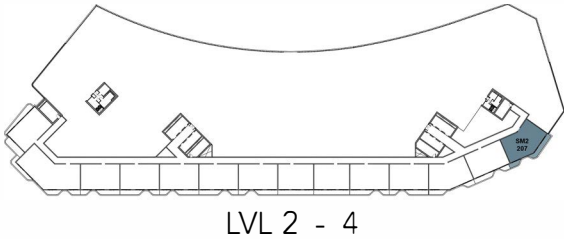


Disclaimer: Dimensions, apartment areas & layouts are indicative and may differ slightly during subsequent design development stages

TWO BEDROOM (TYPE - 8)

No. of BR	2
Total Area	1,450 Sq.ft*

(*) Starting from

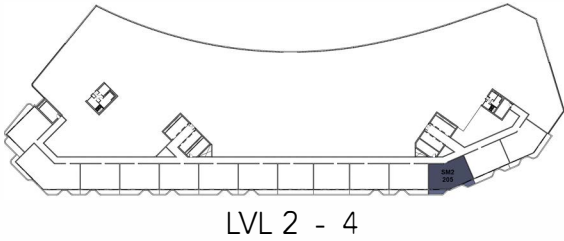


Disclaimer: Dimensions, apartment areas & layouts are indicative and may differ slightly during subsequent design development stages

TWO BEDROOM (TYPE - 9)

No. of BR	2
Total Area	1,366 Sq.ft *

(*) Starting from

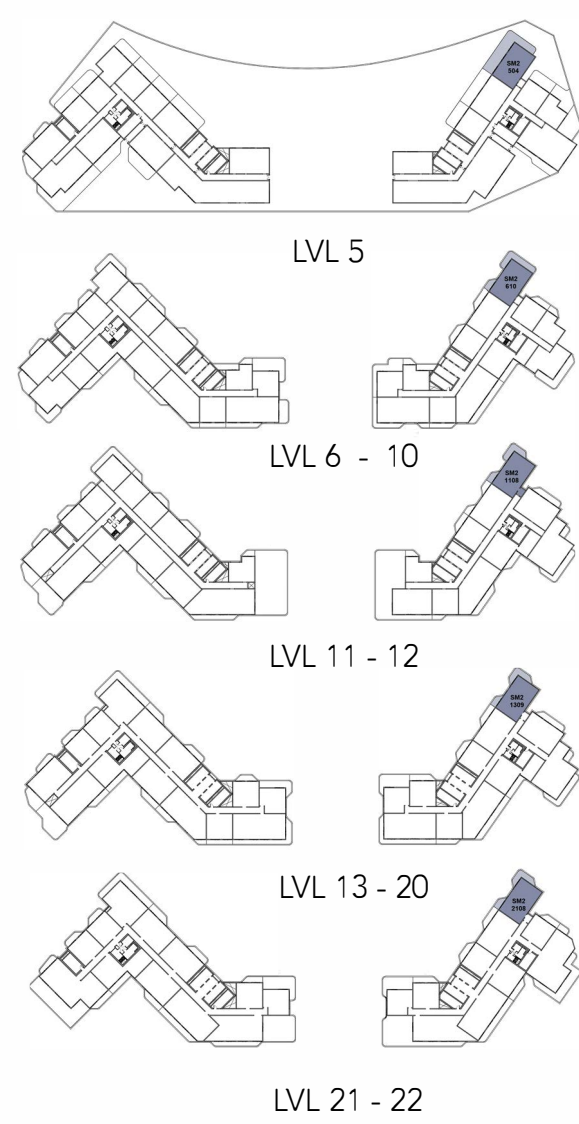


Disclaimer: Dimensions, apartment areas & layouts are indicative and may differ slightly during subsequent design development stages

TWO BEDROOM (TYPE - 10)

No. of BR	2
Total Area	1,476 Sq.ft *

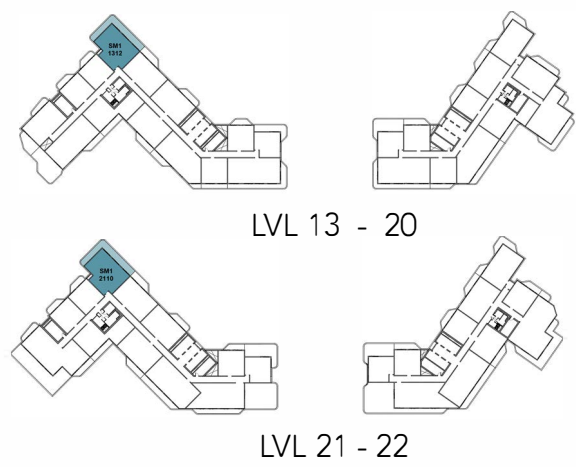
(*) Starting from



TWO BEDROOM (TYPE - 11)

No. of BR	2
Total Area	1,644 Sq.ft *

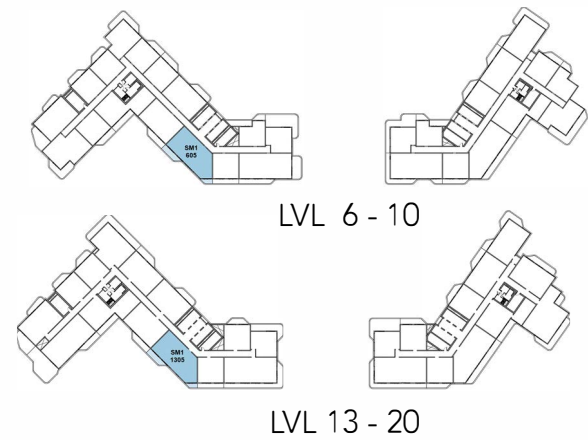
(*) Starting from



TWO BEDROOM (TYPE - 12)

No. of BR	2
Total Area	1,666 Sq.ft *

(*) Starting from

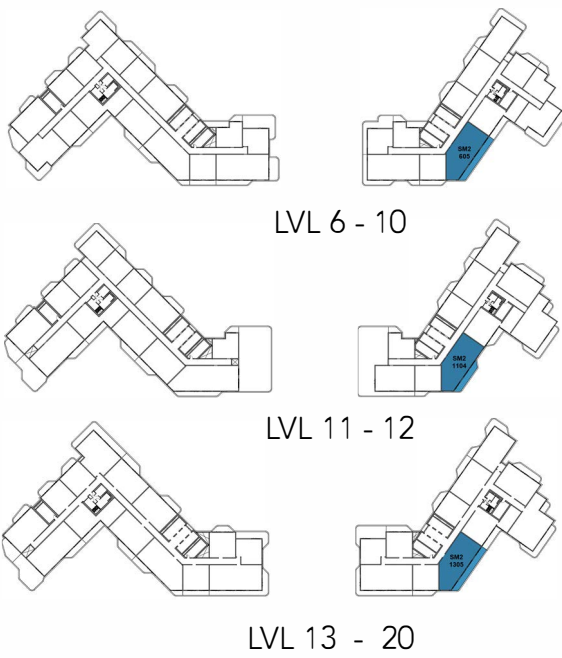


Disclaimer: Dimensions, apartment areas & layouts are indicative and may differ slightly during subsequent design development stages

TWO BEDROOM (TYPE - 13)

No. of BR	2
Total Area	1,735 Sq.ft *

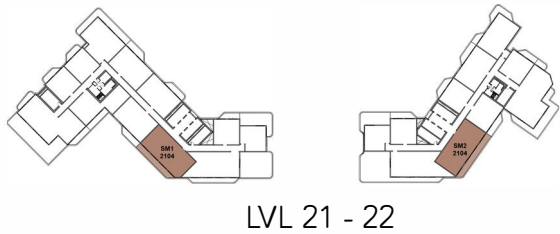
(*) Starting from



THREE BEDROOM (TYPE - 1)

No. of BR	3
Total Area	1,878 Sq.ft *

(*) Starting from

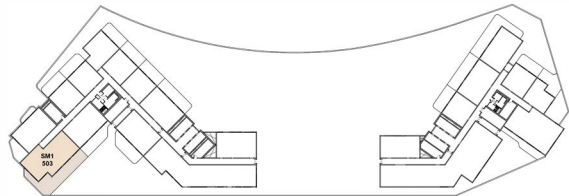


Disclaimer: Dimensions, apartment areas & layouts are indicative and may differ slightly during subsequent design development stages

THREE BEDROOM (TYPE - 2)

No. of BR	3
Total Area	2,679 Sq.ft

(*) Starting from



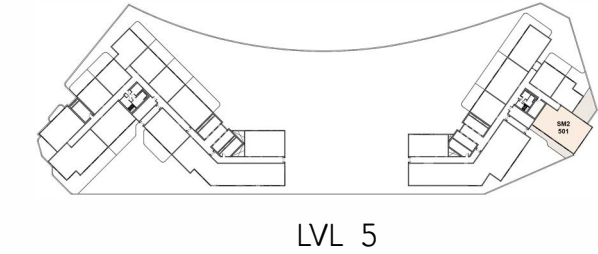
LVL 5

Disclaimer: Dimensions, apartment areas & layouts are indicative and may differ slightly during subsequent design development stages

THREE BEDROOM (TYPE - 3)

No. of BR	3
Total Area	2,664 Sq.ft

(*) Starting from



Disclaimer: Dimensions, apartment areas & layouts are indicative and may differ slightly during subsequent design development stages

THREE BEDROOM (TYPE - 4)

No. of BR	3
Total Area	4,514 Sq.ft *

(*) Starting from

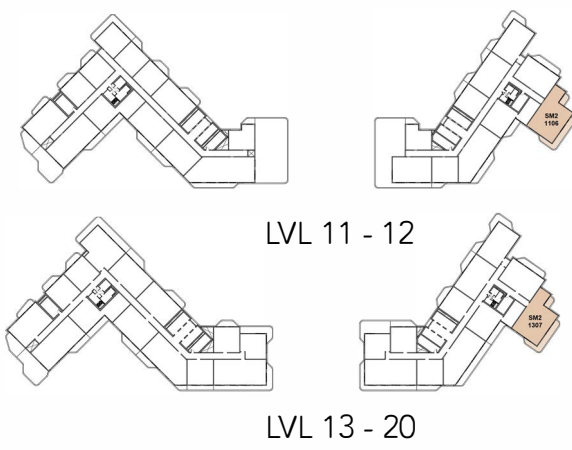


Disclaimer: Dimensions, apartment areas & layouts are indicative and may differ slightly during subsequent design development stages

THREE BEDROOM (TYPE - 5)

No. of BR	3
Total Area	1,861 Sq.ft *

(*) Starting from

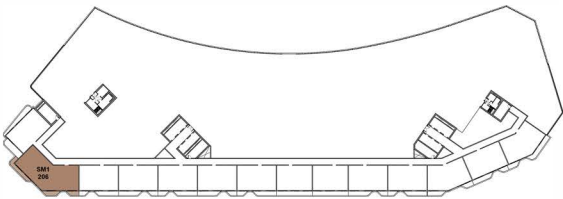


Disclaimer: Dimensions, apartment areas & layouts are indicative and may differ slightly during subsequent design development stages

THREE BEDROOM (TYPE - 6)

No. of BR	3
Total Area	2,233 Sq.ft *

(*) Starting from



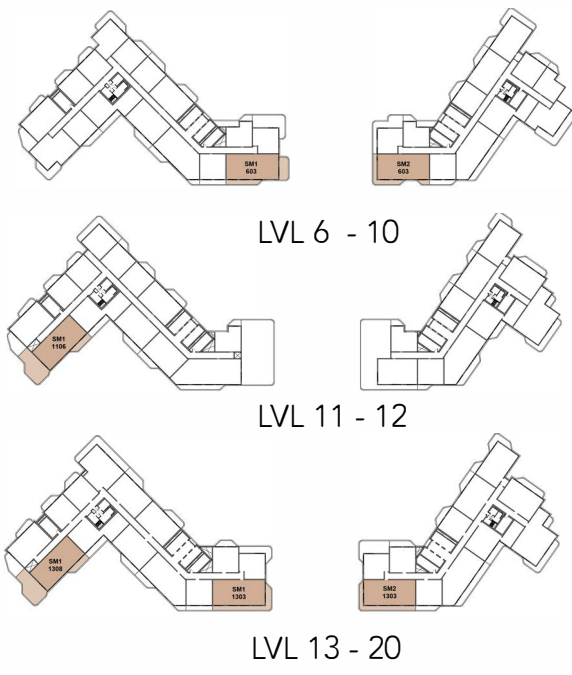
LVL 2 - 4

Disclaimer: Dimensions, apartment areas & layouts are indicative and may differ slightly during subsequent design development stages

THREE BEDROOM (TYPE - 7)

No. of BR	3
Total Area	1,740 Sq.ft *

(*) Starting from



Disclaimer: Dimensions, apartment areas & layouts are indicative and may differ slightly during subsequent design development stages

4-BED PENTHOUSE (TYPE-1)

No. of BR	4
Total Area	6,233 Sq.ft

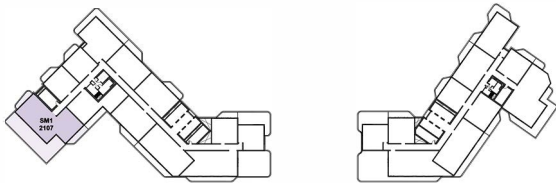
(*) Starting from



LOWER LEVEL



UPPER LEVEL



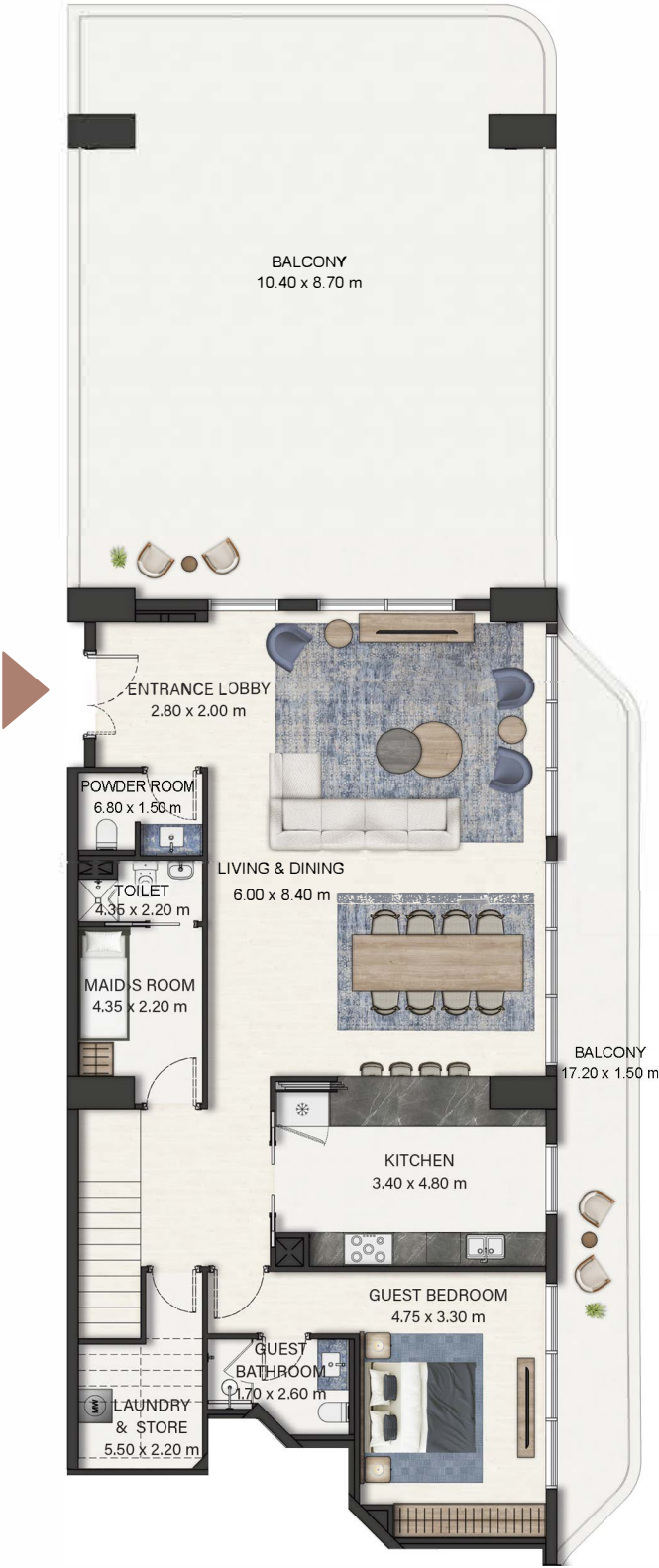
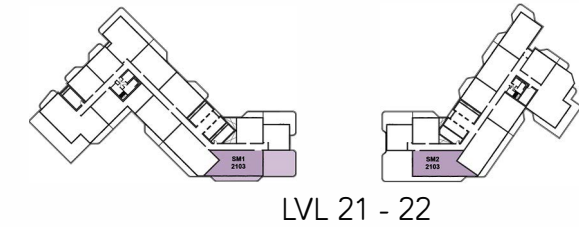
LVL 21 - 22

Disclaimer: Dimensions, apartment areas & layouts are indicative and may differ slightly during subsequent design development stages

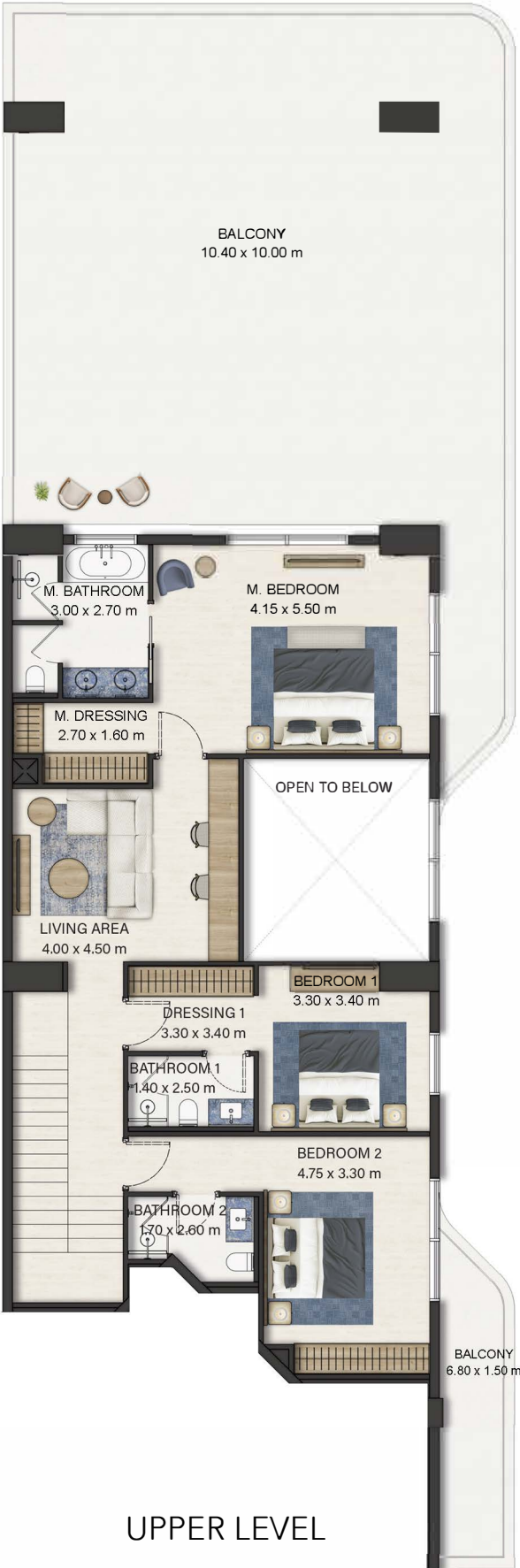
4-BED PENTHOUSE (TYPE-2)

No. of BR	04 - PH
Total Area	5,038 Sq.ft *

(*) Starting from



LOWER LEVEL

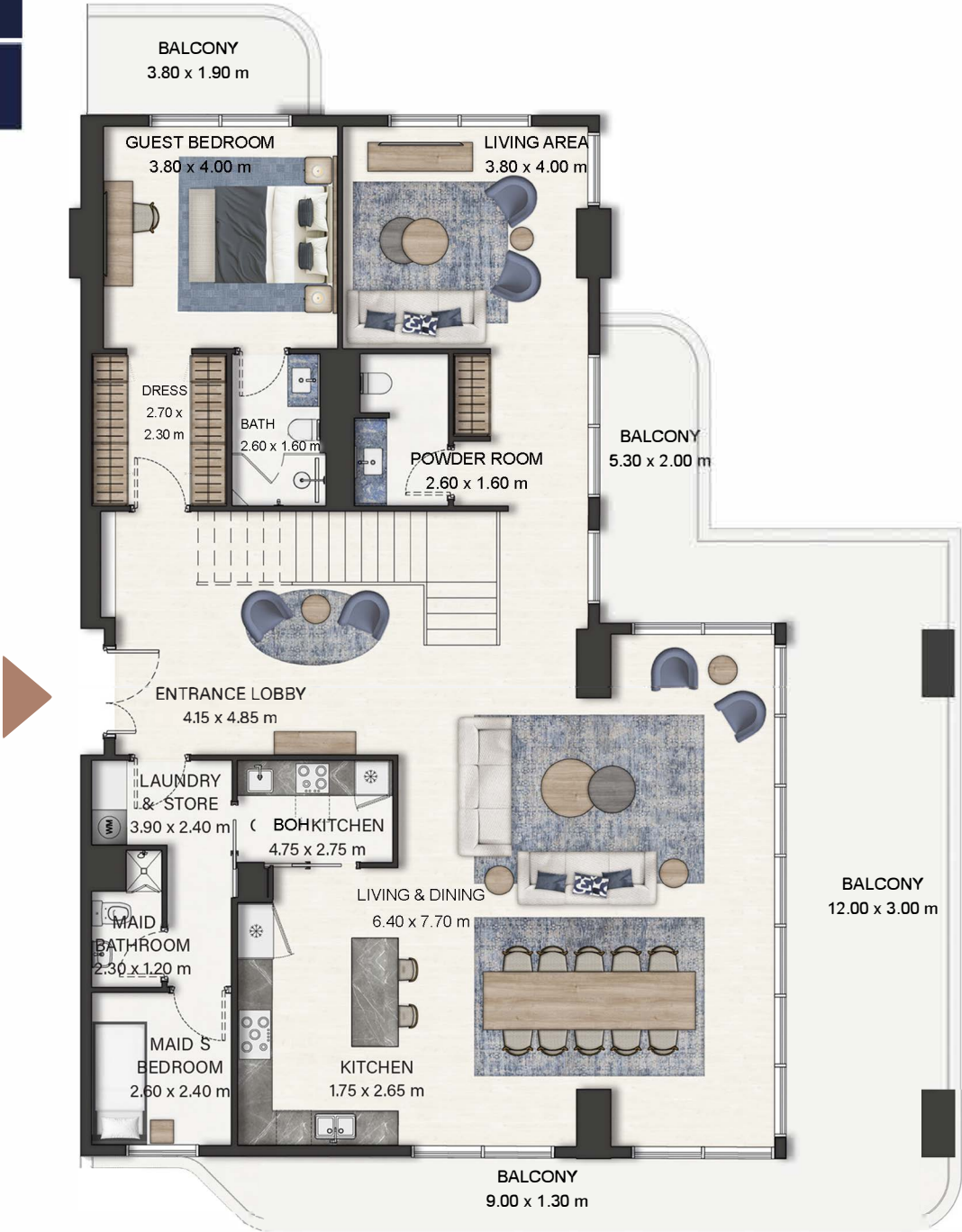


UPPER LEVEL

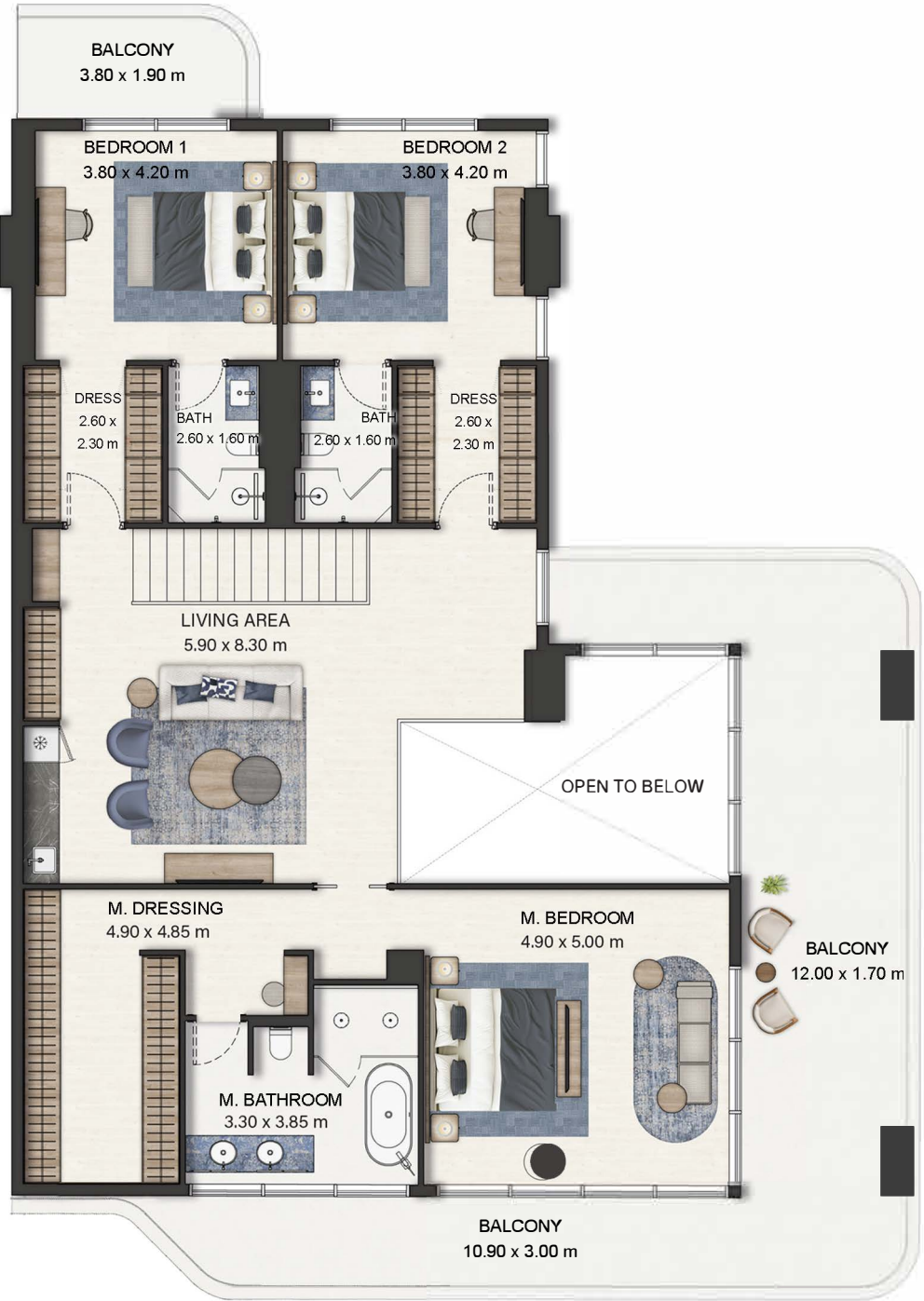
4-BED PENTHOUSE (TYPE-3)

No. of BR	4
Total Area	4,987 Sq.ft

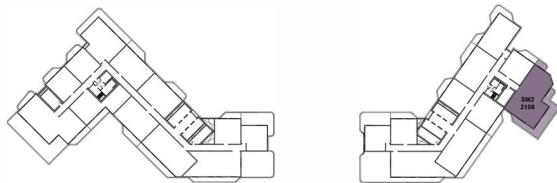
(*) Starting from



LOWER LEVEL



FIRST LEVEL



LVL 21 - 22

Disclaimer: Dimensions, apartment areas & layouts are indicative and may differ slightly during subsequent design development stages

3-BED TOWNHOUSE (TYPE-1)

No. of BR	3
Total Area	3,287 Sq.ft *

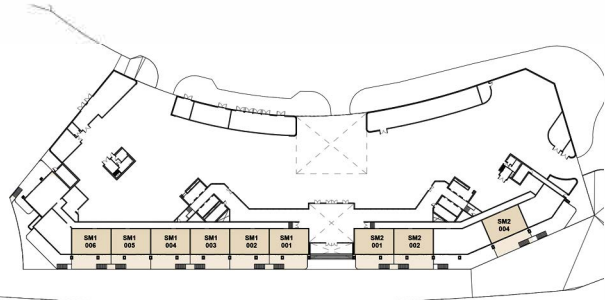
(*) Starting from



GROUND LEVEL



FIRST LEVEL



LVL G - 1

Disclaimer: Dimensions, apartment areas & layouts are indicative and may differ slightly during subsequent design development stages

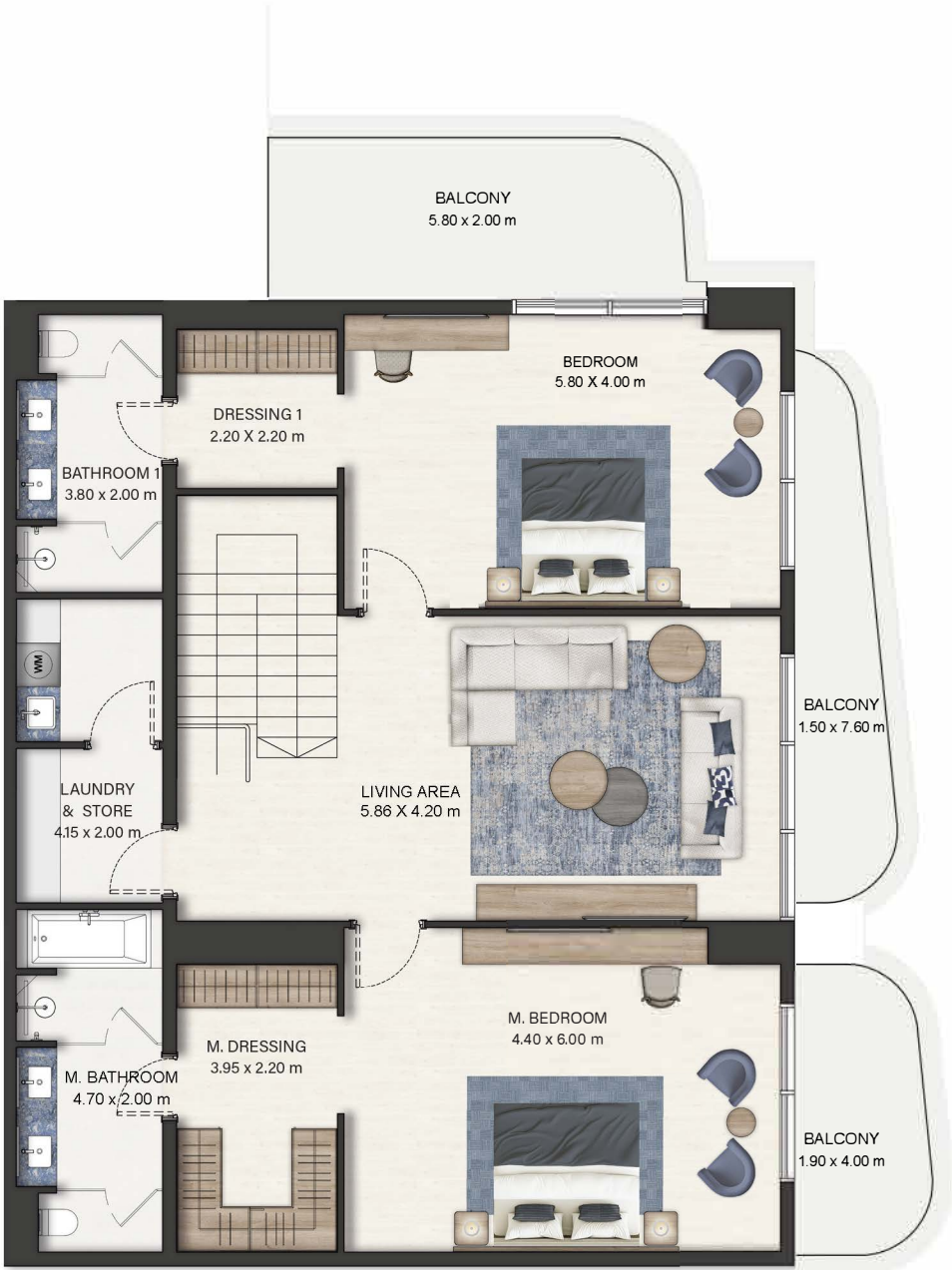
3-BED TOWNHOUSE (TYPE-1A)

No. of BR	3
Total Area	3,745 Sq.ft

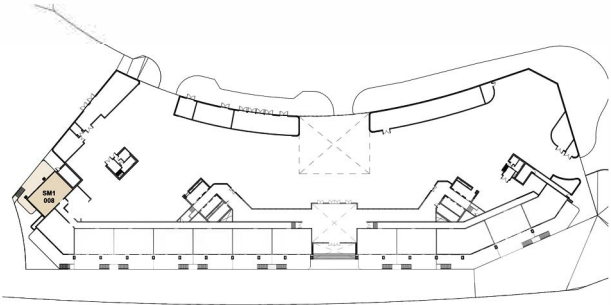
(*) Starting from



GROUND LEVEL



FIRST LEVEL



LVL G - 1

Disclaimer: Dimensions, apartment areas & layouts are indicative and may differ slightly during subsequent design development stages

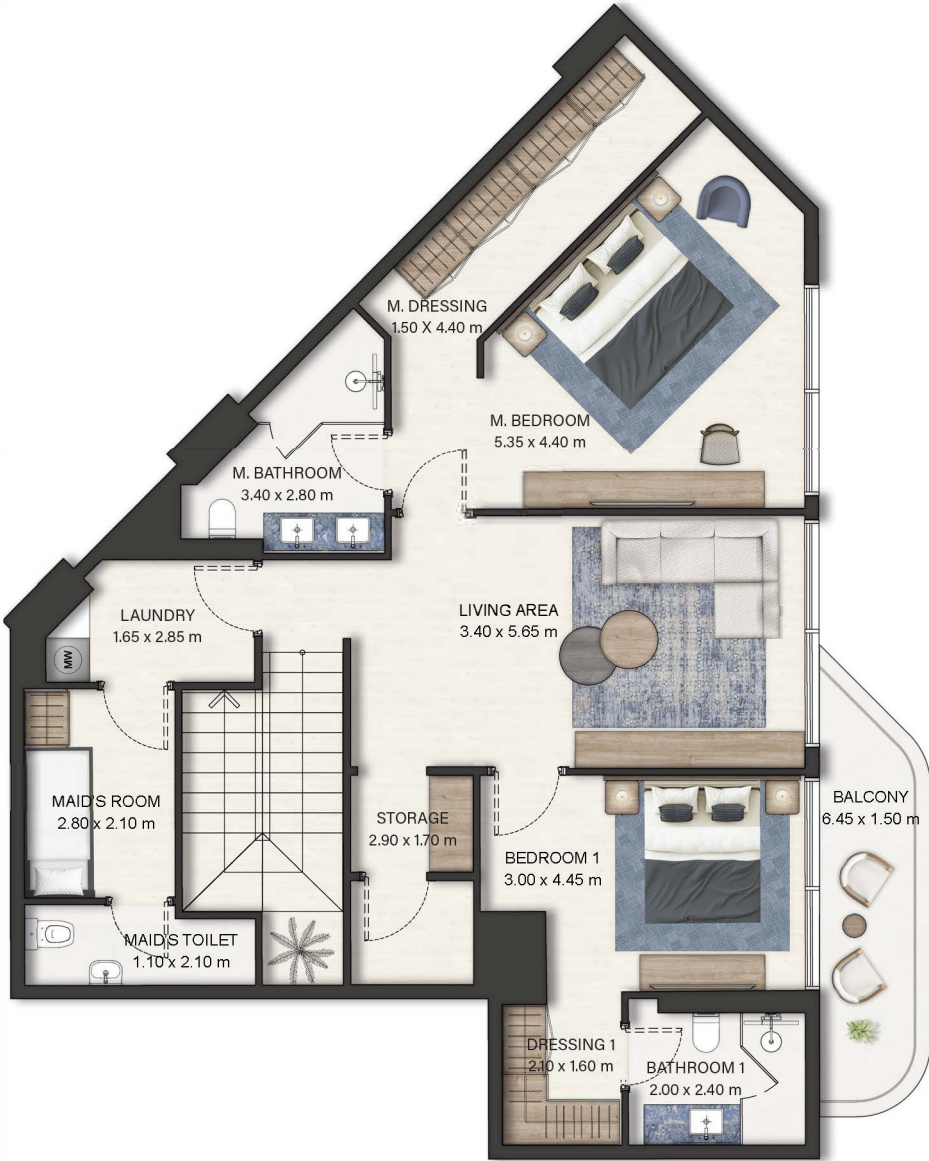
3-BED TOWNHOUSE (TYPE-2)

No. of BR	3
Total Area	3,188 Sq.ft

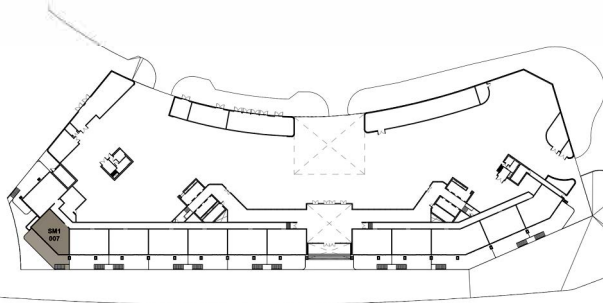
(*) Starting from



GROUND LEVEL



FIRST LEVEL



LVL 1 - 2

Disclaimer: Dimensions, apartment areas & layouts are indicative and may differ slightly during subsequent design development stages

4-BED TOWNHOUSE (TYPE-3)

No. of BR	4
Total Area	4,722 Sq.ft

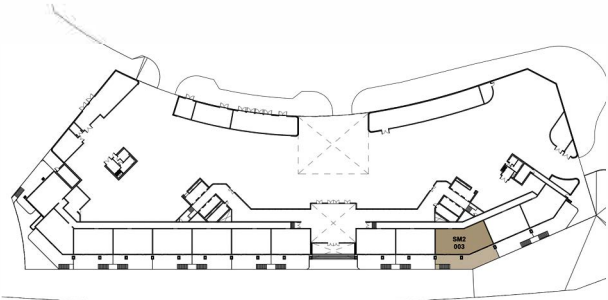
(*) Starting from



GROUND LEVEL



FIRST LEVEL



LVL 1 - 2

Disclaimer: Dimensions, apartment areas & layouts are indicative and may differ slightly during subsequent design development stages

3-BED TOWNHOUSE (TYPE-4)

No. of BR	3
Total Area	3,767 Sq.ft

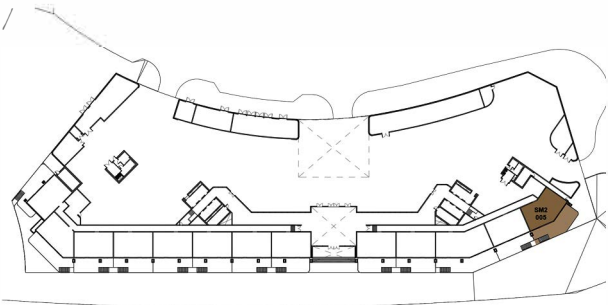
(*) Starting from



GROUND LEVEL



FIRST LEVEL



LVL 1 - 2

Disclaimer: Dimensions, apartment areas & layouts are indicative and may differ slightly during subsequent design development stages