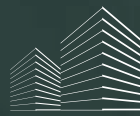


MEYDAN HORIZON  
DUBAI

# HELVETIA *verde*

DEVELOPED BY  **DHG**  
PROPERTIES



# Content

03 *The* ESSENCE

11 *The* SURROUNDINGS

16 *The* INTERIORS

27 *The* LAYOUTS

37 *The* EXPERIENCE

41 *The* VISION



# *The* Essence







## *Your Refined Home in Meydan Horizon*

Helvetia Verde stands as a statement of design, comfort, and quality.

Set in one of Dubai's most prestigious visionary districts, it offers more than a home — it is a personal retreat, shaped by the finest architecture and refined interiors.







# HELVETIA

## *Residences for Those Who Seek More*

Inspired by the ancient name for Switzerland, we created Helvetia — a premium residential brand that embodies our legacy of Swiss real estate excellence and precision.

Helvetia Verde, like all Helvetia developments, stands for unmatched quality and exceptional living, for those who appreciate sophisticated elegance and lasting value.





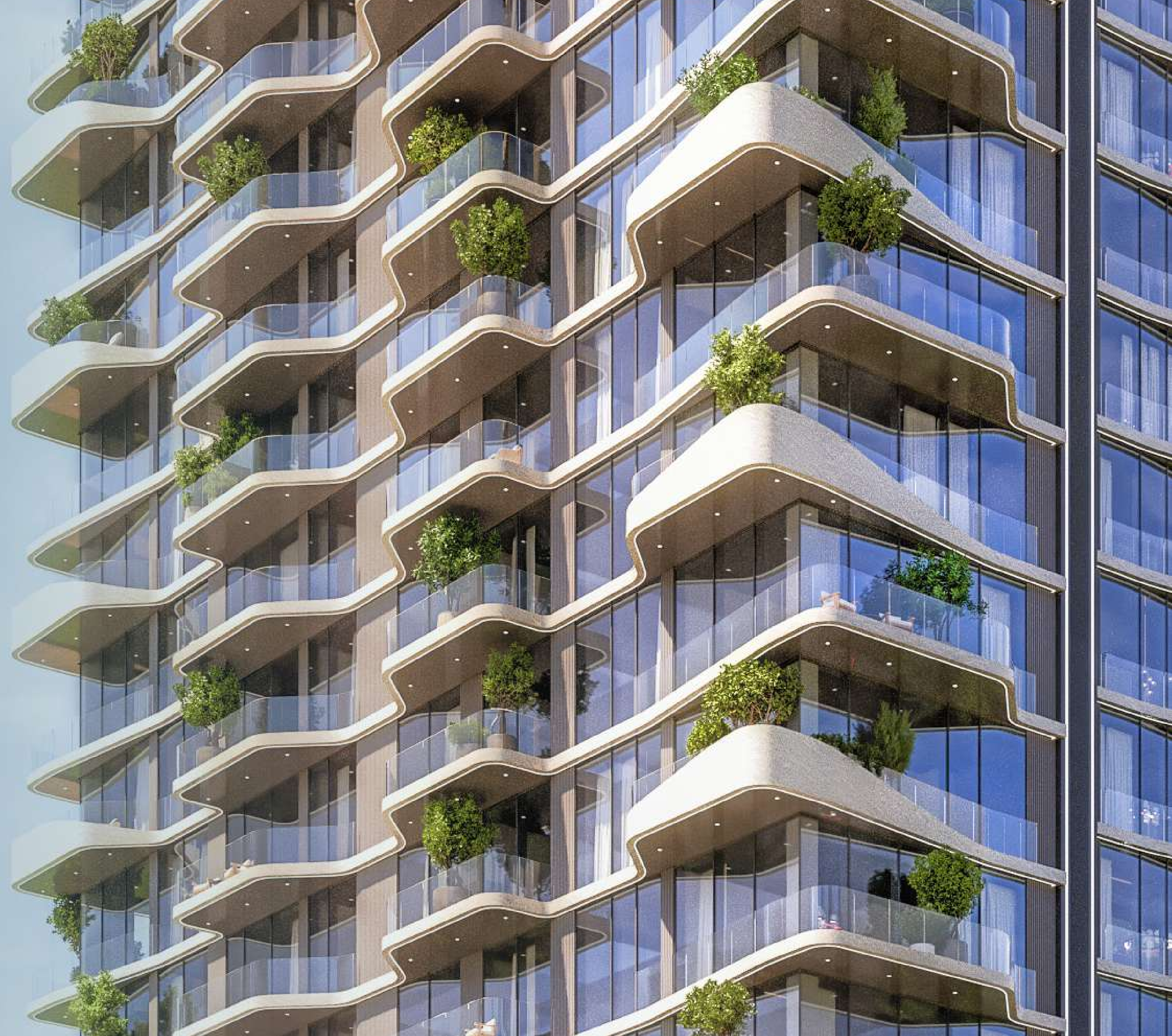
ARCHITECTURE FOR  
*Life's Finest Moments*



## *Sleek. Iconic.*

Helvetia Verde redefines Meydan Horizon skyline with a striking vertical form and minimalist elegance.

With dynamic lines and a contemporary aesthetic, every detail is designed to uplift.







## *Views that Unfold Like Horizons*

The high-rise silhouette offers open views and abundant natural light throughout the day.

Expansive terraces invite you to take in sunrise and sunset — whether gazing toward the Burj Khalifa and Dubai skyline or across the lush panoramas of Ras Al Khor's greenery.









# *The* Surroundings





## *The Art of Community Living*

Nestled in Meydan Bukadra — reimagined as Meydan Horizon — your new home isn't just close to everything; it's part of what's next.

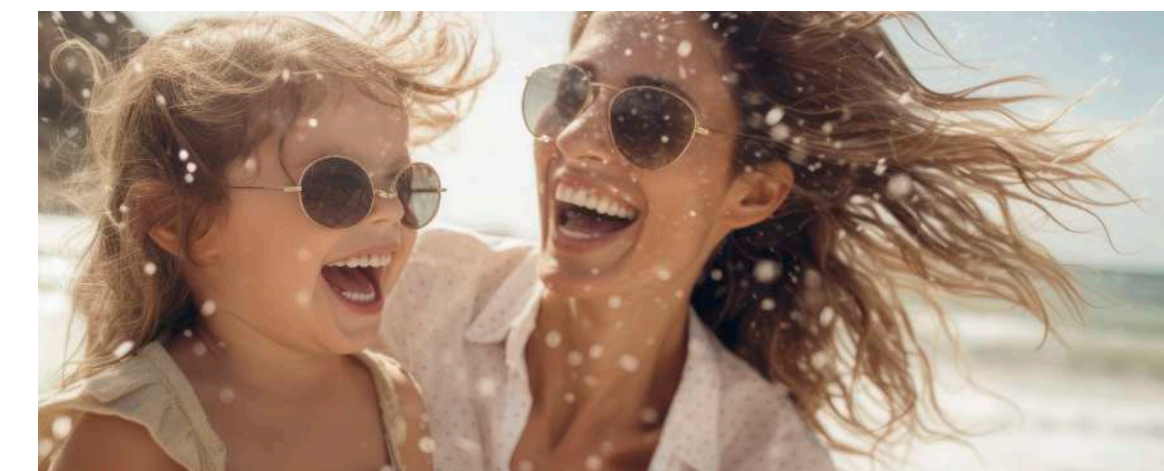
This future-forward district is envisioned as a vibrant live-work-play community, where residential, business, and leisure experiences come together seamlessly.



## *An Urban Pulse in Harmony with Nature*

The blend of city energy and the tranquility of a green oasis has never felt more natural.

Spend fun-filled days at the nearby crystal lagoon beach or stroll along shaded promenade lined with charming cafés, restaurants, and shops. Here, an exclusive waterfront experience is enriched by expansive landscaped parks, perfect for active outdoor living and moments of true relaxation.







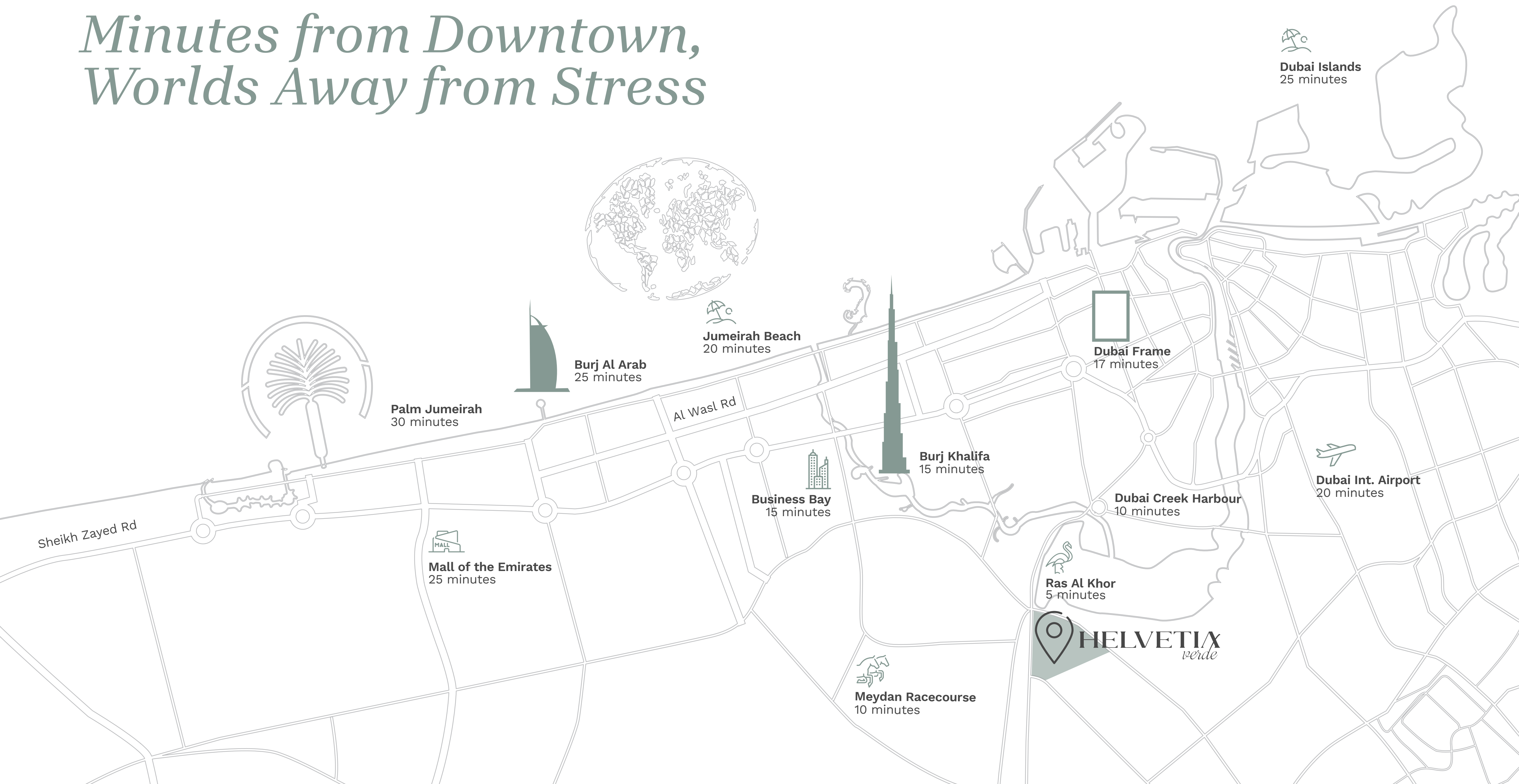
## *Two Worlds of Wonder at Your Doorstep*

Discover the serene beauty of Ras Al Khor Wildlife Sanctuary, just minutes away. This rare natural haven at the edge of Dubai Creek is renowned for its graceful flocks of rose-colored flamingos.

For equestrian enthusiasts, the nearby Meydan Racecourse District offers a five-star destination dedicated to the elegance of horse racing, complemented by a golf course and a collection of elite leisure venues.



# Minutes from Downtown, Worlds Away from Stress





## *Your Gateway to Dubai's Best*

Enjoy effortless access to Dubai's iconic landmarks, vibrant downtown, and scenic coastline.

Surrounded by a major road network and conveniently close to the international airport, this location will also be directly connected to the upcoming metro line.







# *The* Interiors



## *An Address of Prestige*

At Helvetia Verde beauty and function come together in every detail.

Carefully selected materials and thoughtfully designed shapes and lines open a new chapter of refined living — from the property entrance to every individual residence.









## *Residences with the Helvetia Signature Look*

Excellence is more than a standard in Helvetia homes — it's reflected in every residence, whether one, two, or three bedrooms.

Smart layouts paired with clean aesthetics and elegant design maximize space, flow, and the overall sense of openness. A mindful selection of colors and textures creates an atmosphere that radiates calm and natural beauty.

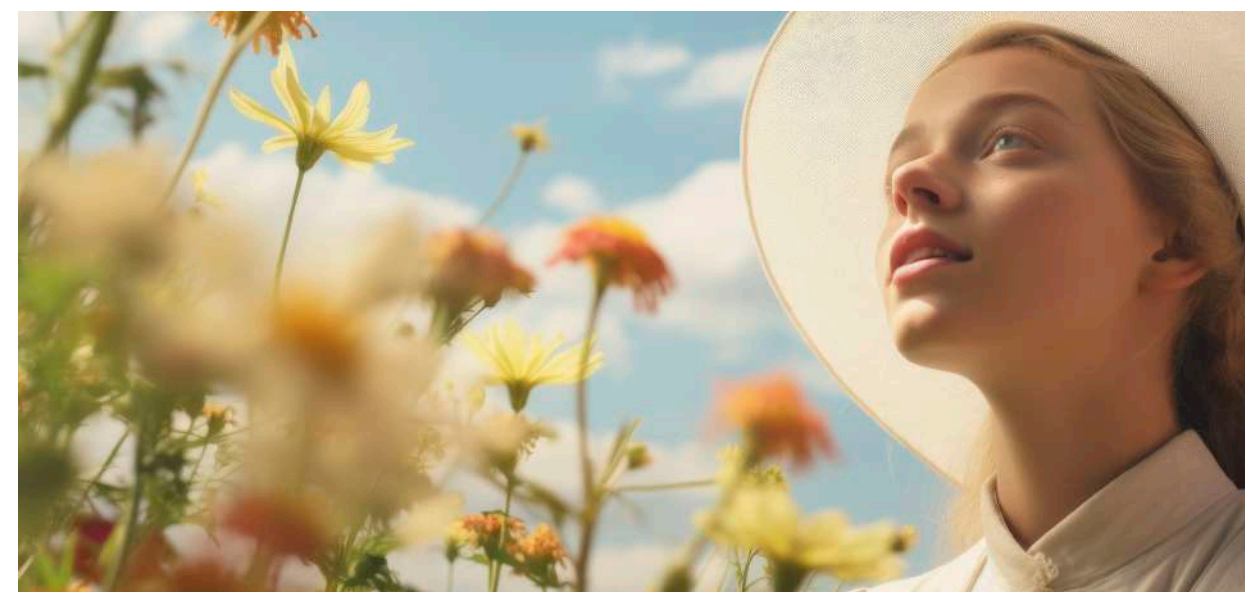




## *An Exclusive Collection of Garden Apartments*

Enjoy a villa-inspired lifestyle in a vertical setting.

For those who appreciate private outdoor spaces we have created a limited collection of three-bedroom residences featuring beautifully landscaped gardens for special moments that that elevate everyday living.





DESIGNED TO INSPIRE.  
*Built to Endure.*











LIGHT-FILLED INTERIORS.  
*Modern Comfort.*







YOUR SANCTUARY.  
*Quiet Luxury.*









## *Timeless Elegance in Every Detail*

Crafted with premium materials and luxurious finishes, every detail speaks to enduring elegance.

At Helvetia Verde a curated composition of the finest materials tells the story of quiet luxury.







## *The Touch of True Refinement*

Oak wood, travertine, bronze metal, and marble create a tactile richness, while textured wallpapers, fine flooring, mirrors, and reflective surfaces add depth and distinction.

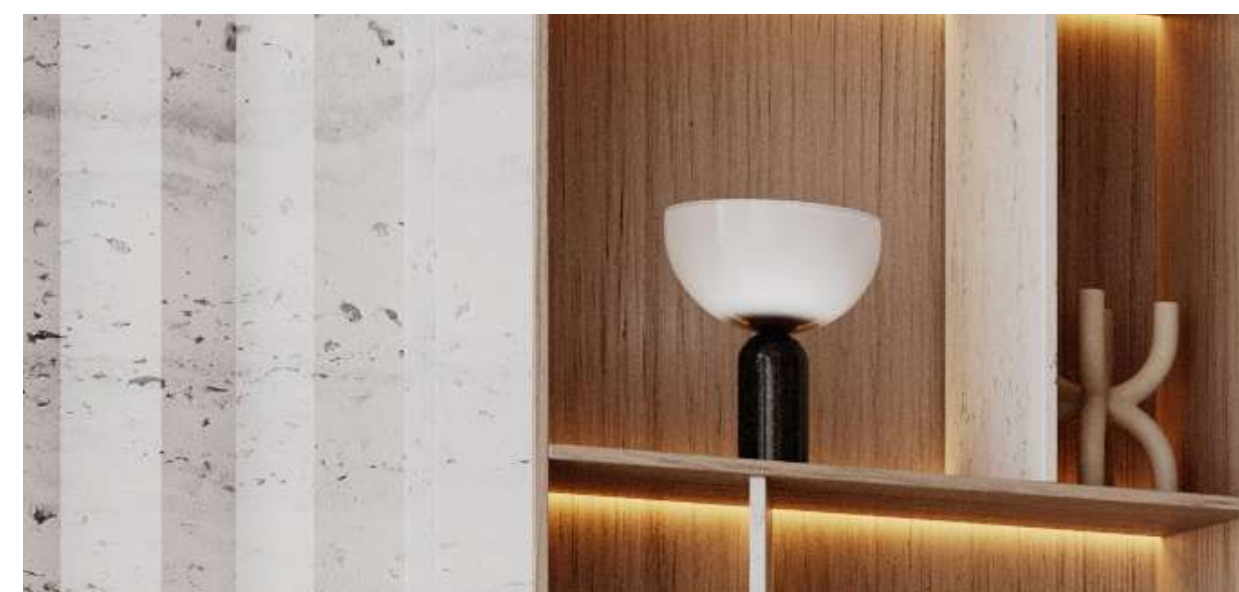
A curated palette of natural tones — soft beiges, muted greys, and gold-bronze accents — is enriched by warm wood textures and the classic beauty of natural stone.



## *Swiss by Quality, International by Design*

Rooted in superior craftsmanship, each residence is defined by precision — in every line and every transition.

Modern in spirit yet timeless in appeal, interiors are furnished to impress while offering unmatched daily comfort.







# *The* Layouts



# 1-Bedroom Residence

## Type 1

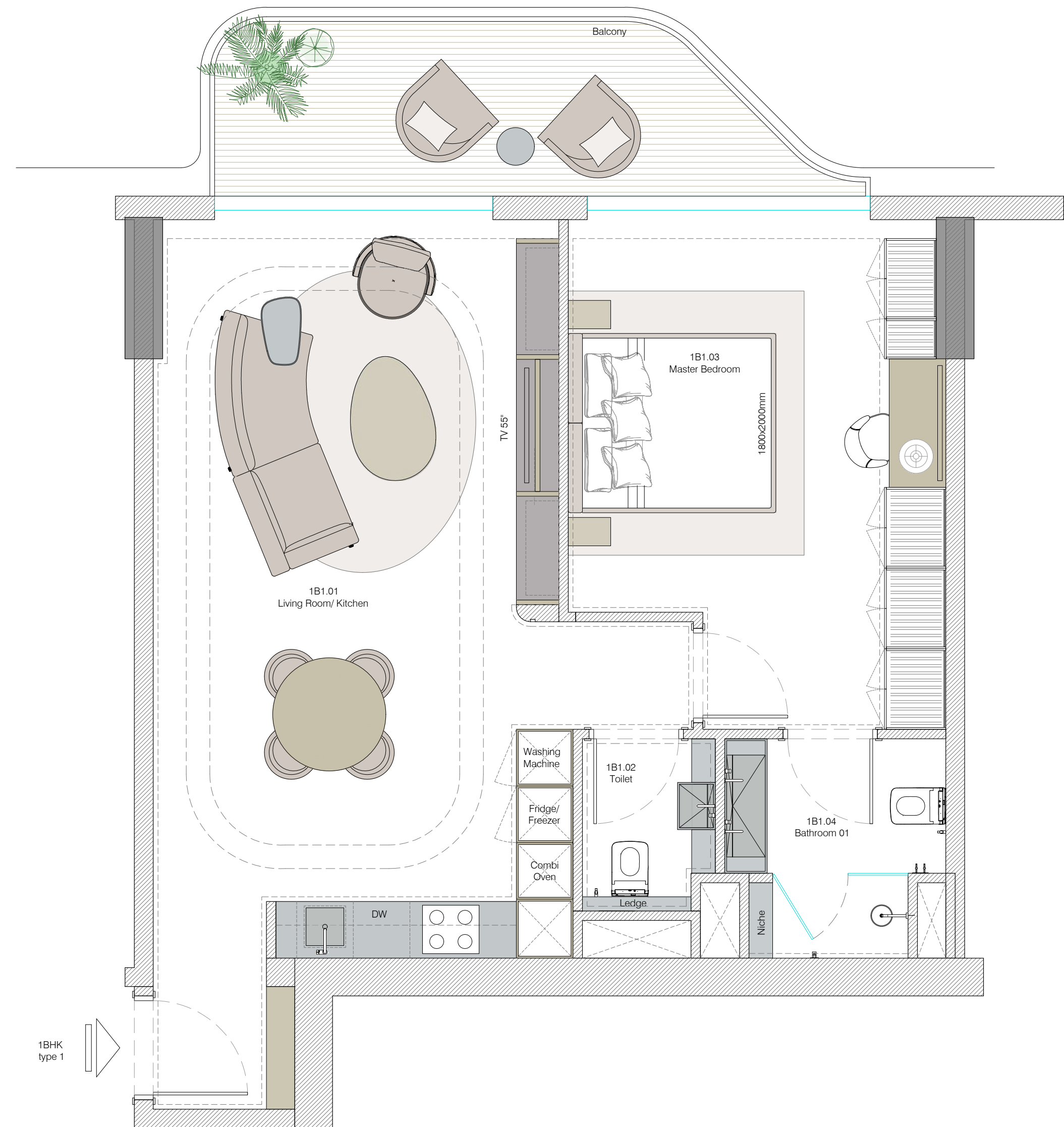
A smart and stylish layout designed for modern urban living — where comfort, function, and elegance meet in perfect balance.

## Apartment Size

from 857.14 sq ft to 922.58 sq ft  
from 79.63 sq m to 85.71 sq m

## Apartment Number

203, 204, 303, 304, 403, 404, 503, 504, 603,  
604, 703, 704, 803, 804, 903, 904, 1003, 1004,  
1103, 1104, 1203, 1204





# 1-Bedroom Residence

## Type 2

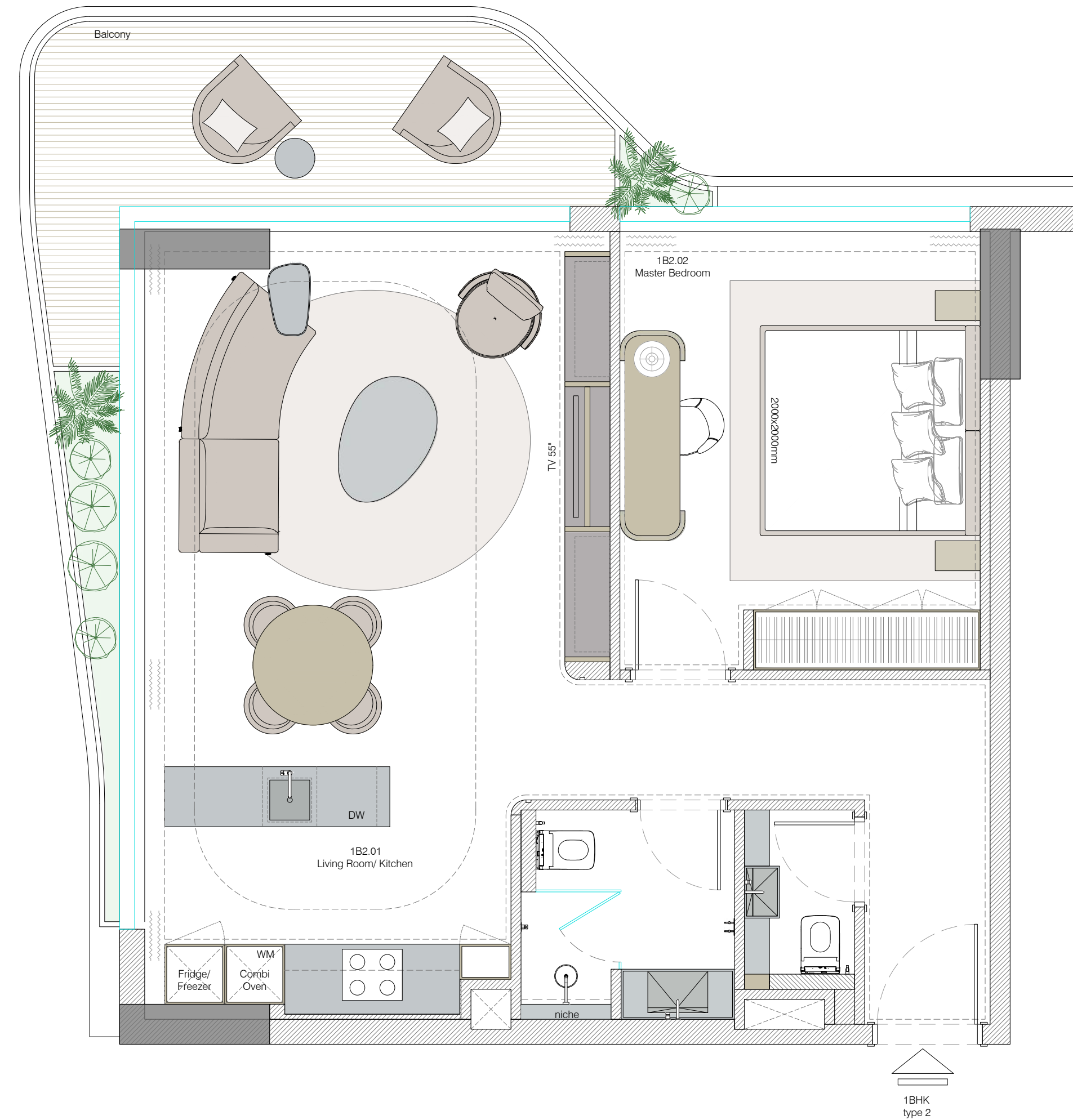
A bright and airy one-bedroom residence with an intuitive layout that maximizes space, light, and everyday comfort.

## Apartment Size

from 857.14 sq ft to 922.58 sq ft  
from 79.63 sq m to 85.71 sq m

## Apartment Number

202, 205, 302, 305, 402, 405, 502, 505, 602,  
605, 702, 705, 802, 805, 902, 905, 1002, 1005,  
1102, 1105, 1202, 1205, 1302, 1402, 1502, 1602





# 1-Bedroom Residence

## Type 3

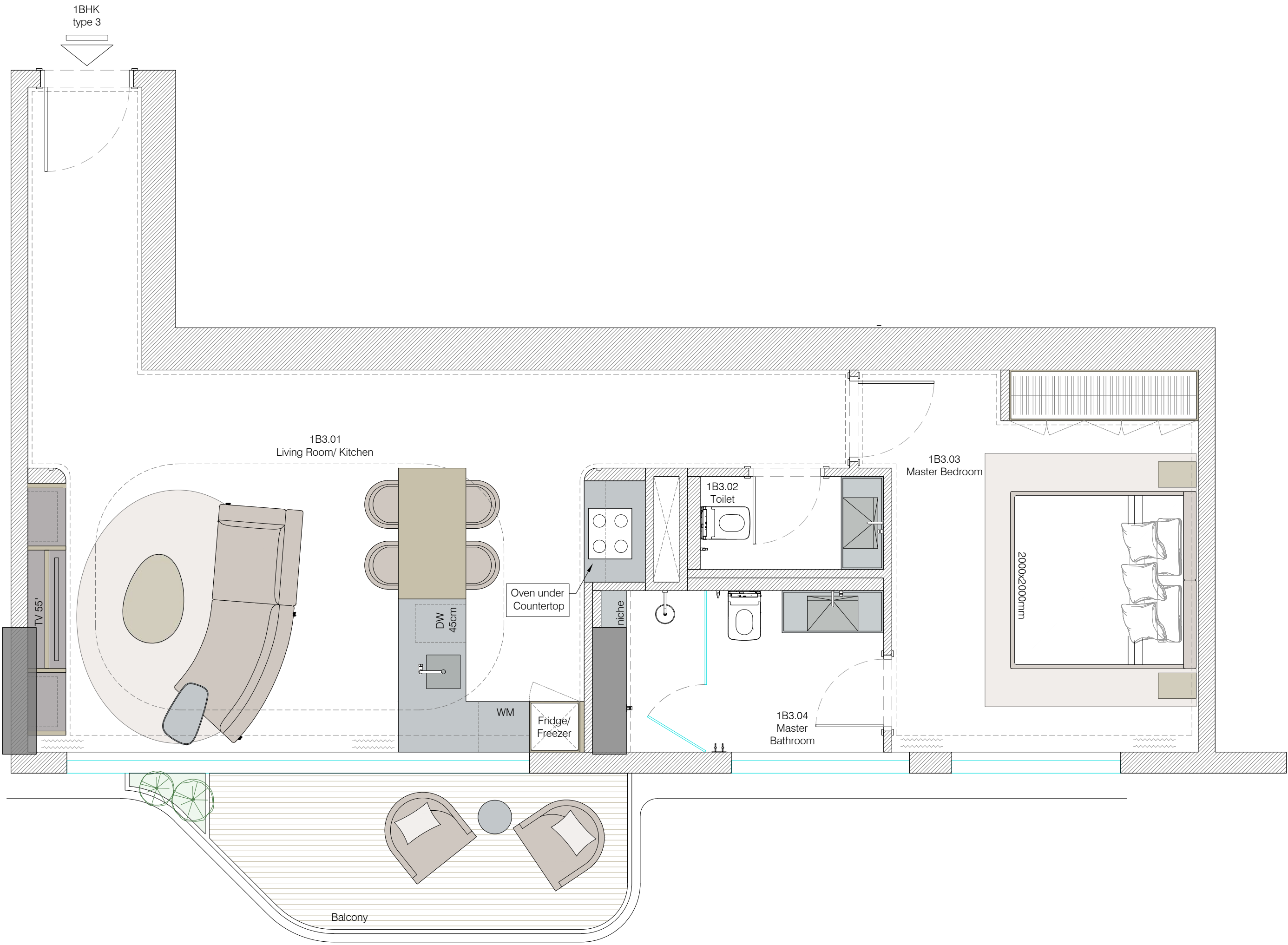
Effortless living in a perfectly composed one-bedroom apartment. Ideal for both couples and individuals searching for a modern and elegant home.

### Apartment Size

from 857.14 sq ft to 922.58 sq ft  
from 79.63 sq m to 85.71 sq m

### Apartment Number

207, 307, 407, 507, 607, 707, 807, 907, 1007,  
1107, 1207, 1306, 1406, 1506, 1606





# 2-Bedroom Residence

## Type 1

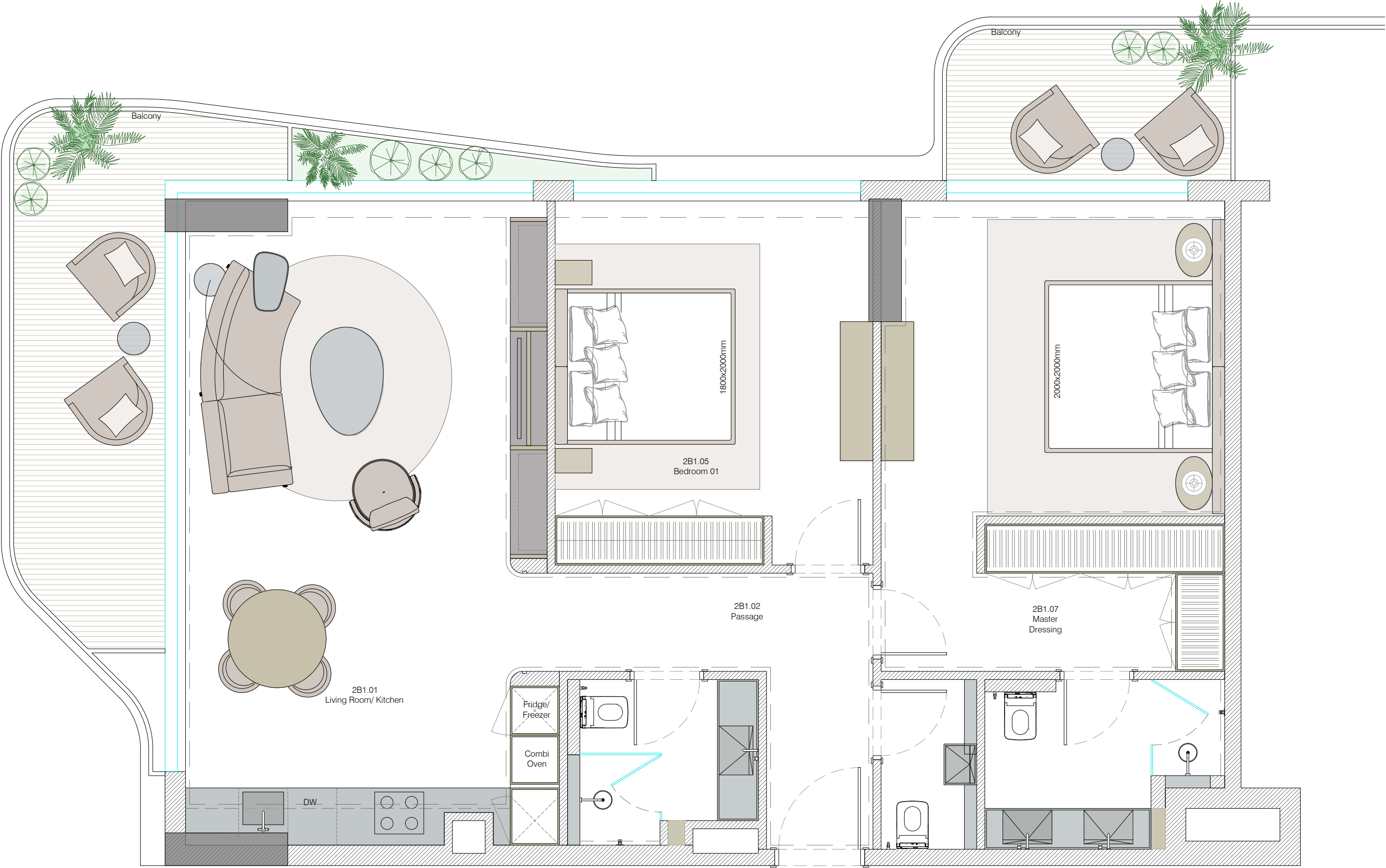
Generous proportions and a thoughtful flow make this two-bedroom apartment ideal for couples, small families, or anyone seeking flexible, elevated living.

## Apartment Size

from 1218.59 sq ft to 1365.31 sq ft  
from 113.21 sq m to 126.84 sq m

## Apartment Number

1304,1404, 1504, 1604





## 2-Bedroom Residence

### Type 2

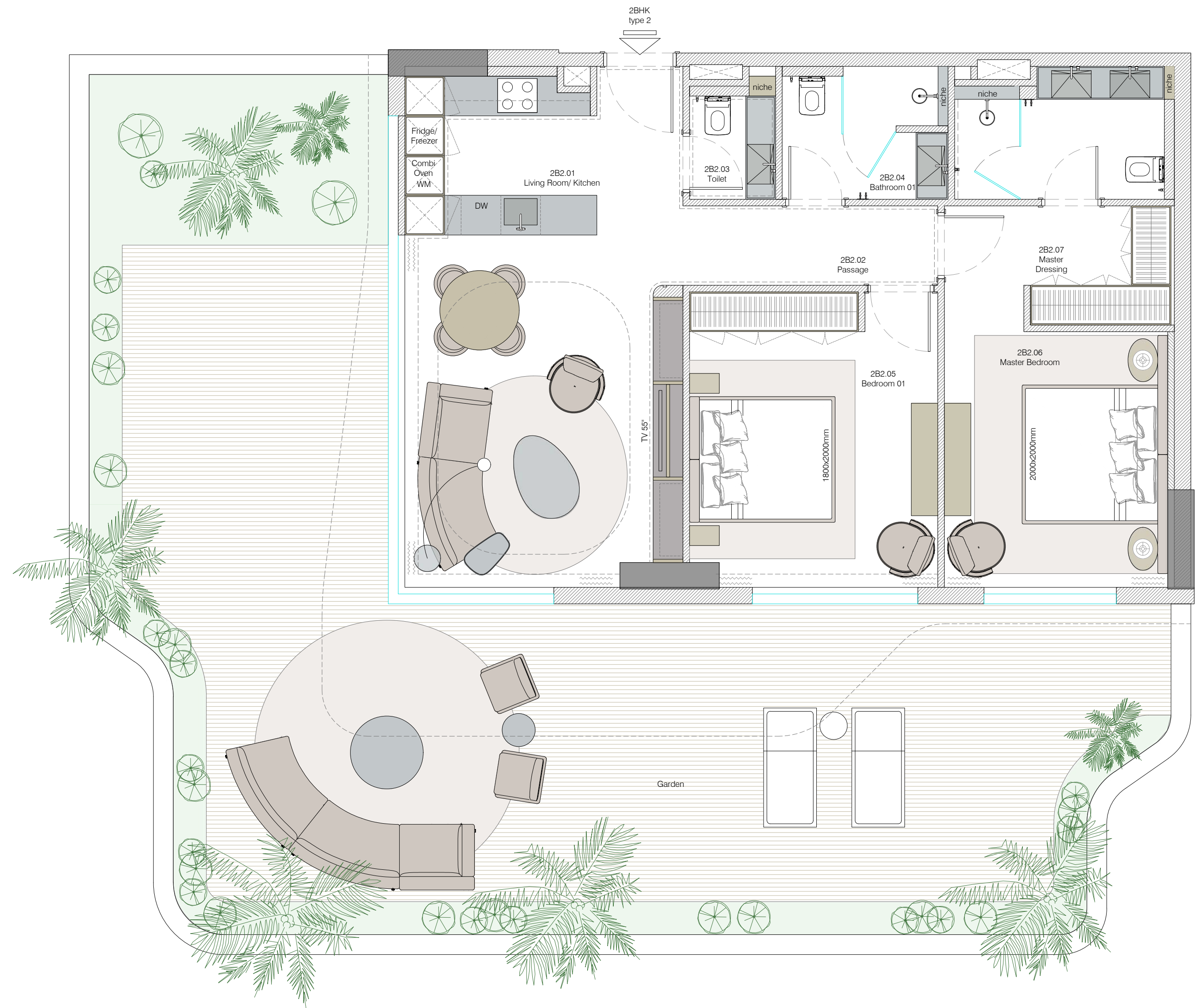
Room to grow, style to live. This special-edition two-bedroom apartment features a private garden — perfect for enjoying a refined outdoor lifestyle.

### Apartment Size

2271.31 sq ft / 211.01 sq m

### Apartment Number

103, 206, 306, 406, 506, 606, 706, 806, 906,  
1006, 1106, 1206, 1305, 1405, 1505, 1605





## 2-Bedroom Residence

### Type 3

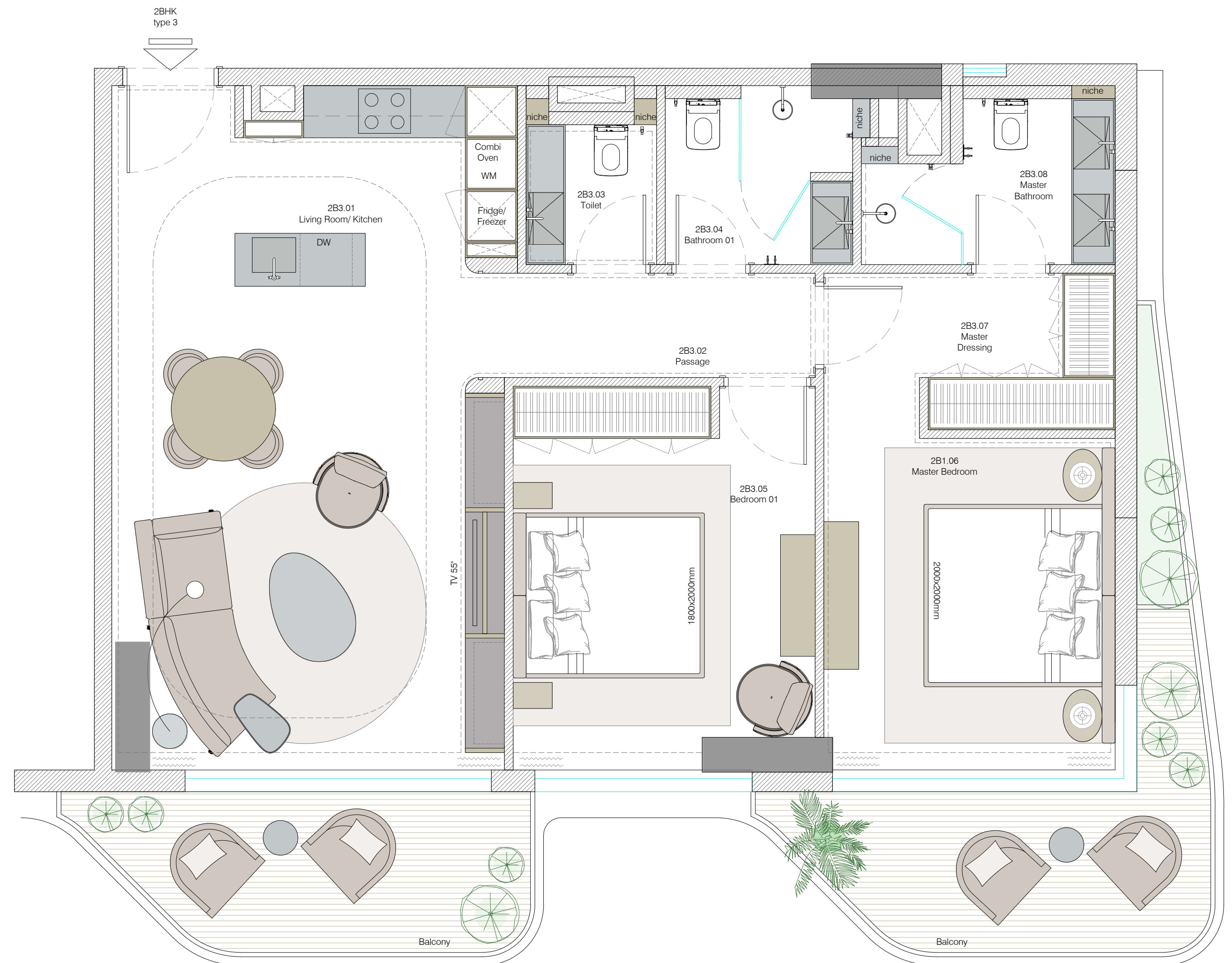
A spacious and thoughtfully designed two-bedroom apartment with contemporary interiors and two private balconies that invite light and fresh air into everyday life.

### Apartment Size

from 1218.59 sq ft to 1365.31 sq ft  
from 113.21 sq m to 126.84 sq m

### Apartment Number

201, 301, 401, 501, 601, 701, 801, 901, 1001, 1101,  
1201, 1301, 1303, 1401, 1403, 1501, 1503,  
1601, 1603





# 3-Bedroom Residence

## Type 1

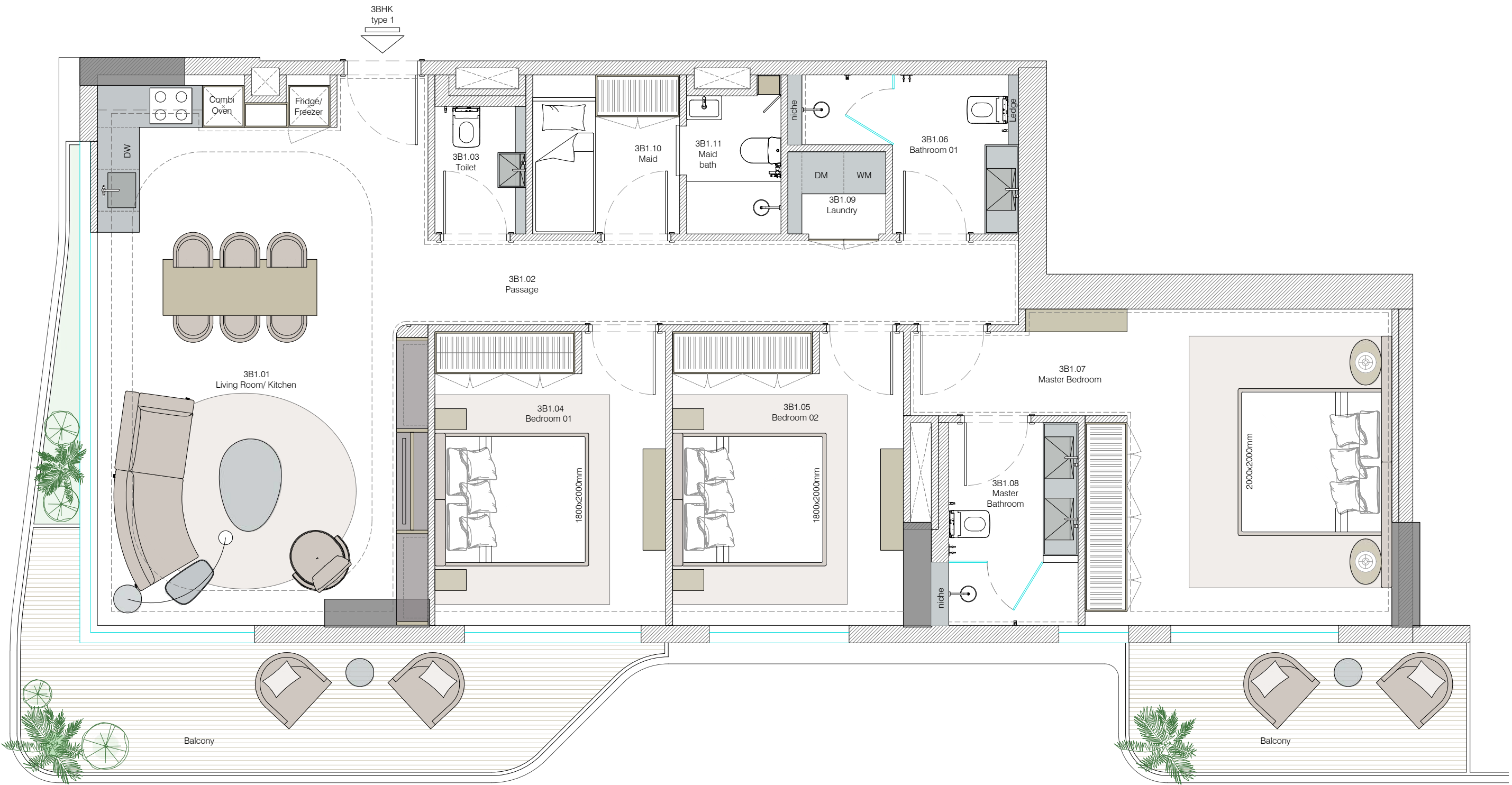
Expansive interiors, multiple balconies, and the luxury of space — these three-bedroom apartments are designed for those who live without compromise.

## Apartment Size

from 1716.53 sq ft to 1837.52 sq ft  
from 159.47 sq m to 170.71 sq m

## Apartment Number

1704





## 3-Bedroom Residence

### Type 2

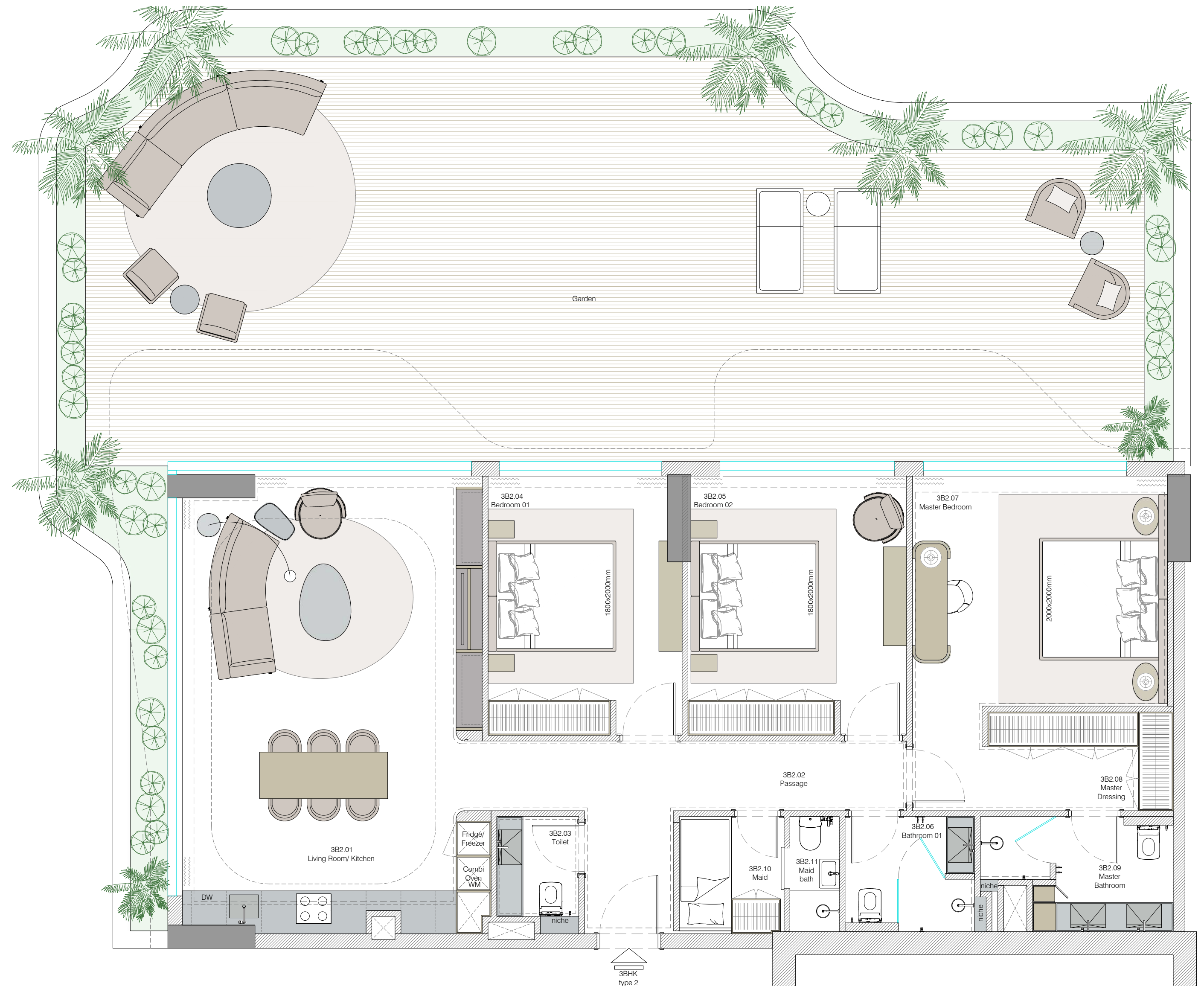
Experience luxury in a three-bedroom apartment with a private garden. This limited collection includes just three exclusive residences, each offering a villa-like ambience.

### Apartment Size

3090.99 sq ft / 287.16 sq m

### Apartment Number

101, 102, 1702, 1703





# 3-Bedroom Residence

## Type 3

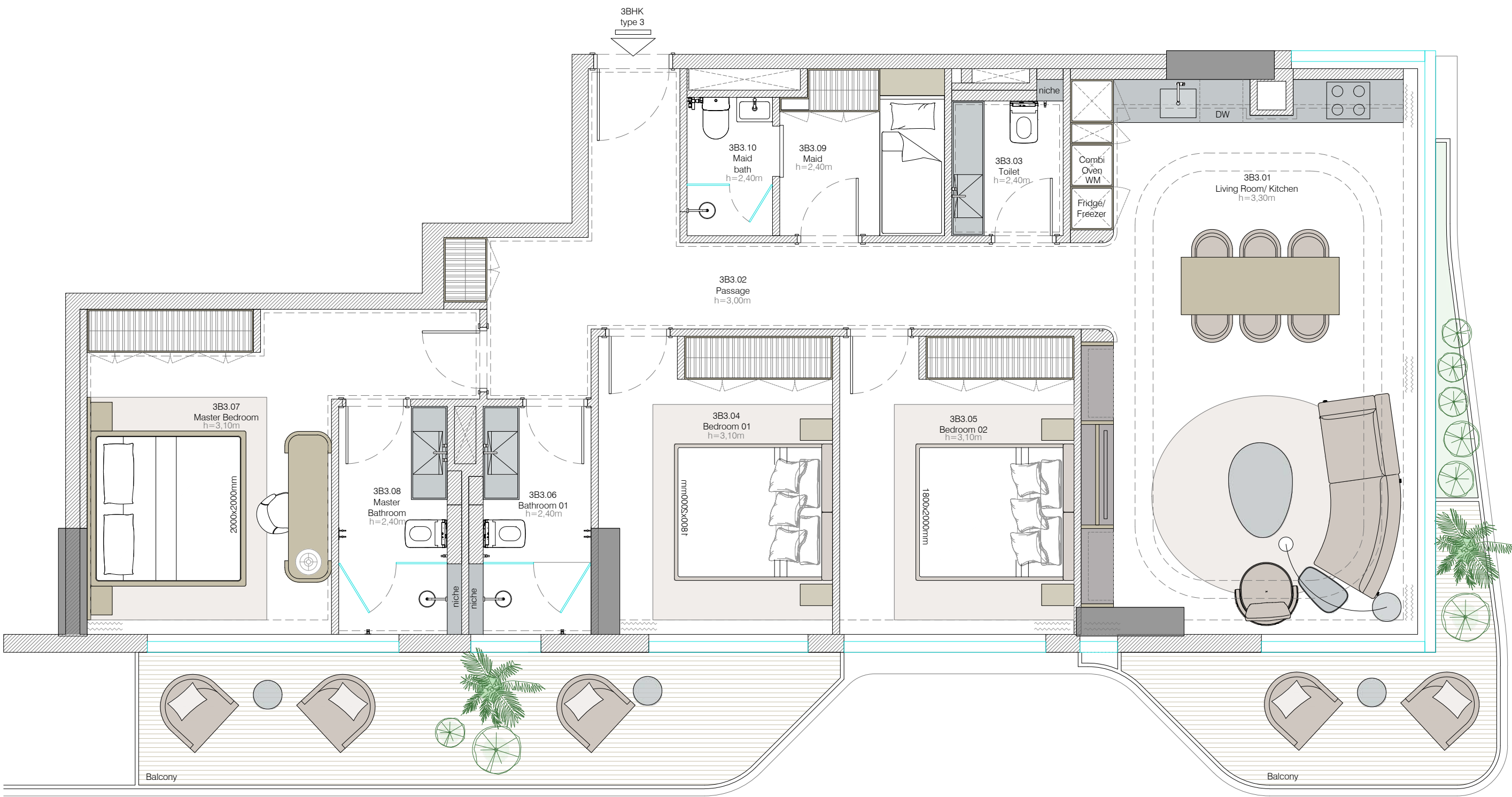
Top-floor three-bedroom residences represent the pinnacle of elevated living. Enjoy panoramic views from sophisticated interiors marked by elegance and refinement.

## Apartment Size

from 1716.53 sq ft to 1837.52 sq ft  
from 159.47 sq m to 170.71 sq m

## Apartment Number

1701







# *The* Experience









*Where Horizons of  
Lifestyle and Leisure Meet*

Diverse outdoor amenities, surrounded by lush greenery, are designed to seamlessly blend indoor and outdoor living.

Thoughtfully curated, world-class facilities create a resort-like atmosphere—enhancing everyday life and promoting well-being.







# Living Beyond Expectations

Designed for modern living, our refined amenities create opportunities for relaxation, connection, and movement — filling each day with purpose and pleasure.

- 1 Swimming pool
- 2 Sun loungers & pool bar
- 3 Indoor gym
- 4 Outdoor gym
- 5 Jogging track
- 6 Yoga & meditation area
- 7 Garden with picnic area
- 8 Kids' playground

Besides amenities on the 1st floor, the ground floor features:

- Retail space
- Lobby with concierge & 24h CCTV







## *Fitness & Recreation for a Healthy Lifestyle*

### **Indoor & Outdoor Gym**

Fitness, anytime — indoors or under the Sky

### **Jogging Track**

Your daily run, framed by green horizons







## *Wellbeing & Relaxation for a Balanced Life*

### **Swimming Pool**

Refreshing moments for all generations

### **Yoga & Meditation area**

Find Balance in a Place of Serenity







## *Nature & Family for Everyday Joy*

### **Garden with Picnic area**

Gatherings surrounded by the green

### **Kids' Playground**

Where Young Imaginations Thrive







# *The* Vision





Helvetia Verde is developed by DHG Properties, the Dubai-based member of DHG — a Swiss real estate and construction group with over 30 years of experience in delivering homes that stand the test of time.

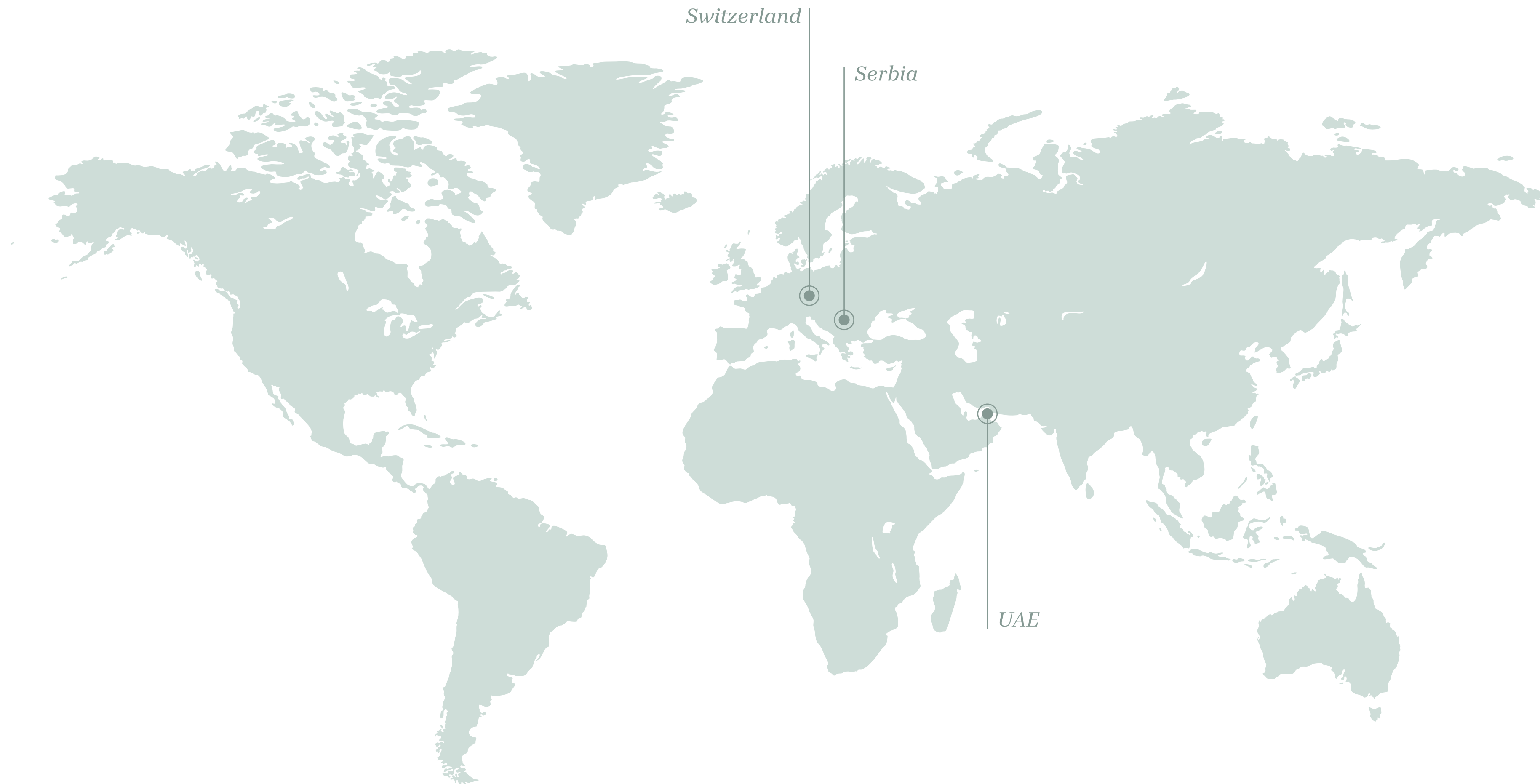
[www.dhg.ch](http://www.dhg.ch)





## *Swiss Legacy Reaching International Horizons*

With more than 300 successfully completed projects in Europe, spanning over 2.5 million square meters, DHG brings Swiss quality and superior craftsmanship to the UAE real estate market, developing properties designed for the future.





*Building the Future, Backed  
by 30 Years of Excellence*

Rooted in decades of expertise, we build with sustainability in mind, and deliver projects that stand as a testament to reliability and trust.

3  
Countries

30  
Years of Business

300+  
Completed Projects

2.5M m<sup>2</sup>  
Delivered Space

1,800+  
Units in development

800M \$  
New projects value



# HELVETIA *verde*

THIS BROCHURE IS INTENDED FOR GENERAL MARKETING PURPOSES ONLY AND DOES NOT CONSTITUTE A LEGAL OFFER OR BINDING COMMITMENT BY THE DEVELOPER. ALL RENDERINGS, IMAGES, LAYOUTS, AND DESCRIPTIONS ARE ARTISTIC IMPRESSIONS AND CONCEPTUAL REPRESENTATIONS THAT MAY NOT REFLECT THE FINAL DELIVERED PRODUCT. THE DEVELOPER RESERVES THE RIGHT TO MAKE CHANGES TO THE DESIGN, SPECIFICATIONS, AND FEATURES IN ACCORDANCE WITH RERA AND DLD REGULATIONS. PROSPECTIVE BUYERS SHOULD REFER TO THE OFFICIAL DOCUMENTATION AND SALE AND PURCHASE AGREEMENT FOR ACCURATE AND ENFORCEABLE INFORMATION.