



*DAMAC*  
CASA



# THE INSPIRATION

*DAMAC*  
CASA

Feel like living on an island, a vertical island

Islands



Aqua Life



Palm Trees



Sunsets





# THE LOCATION

*DAMAC*  
CASA





# TYPICAL FLOOR PLAN

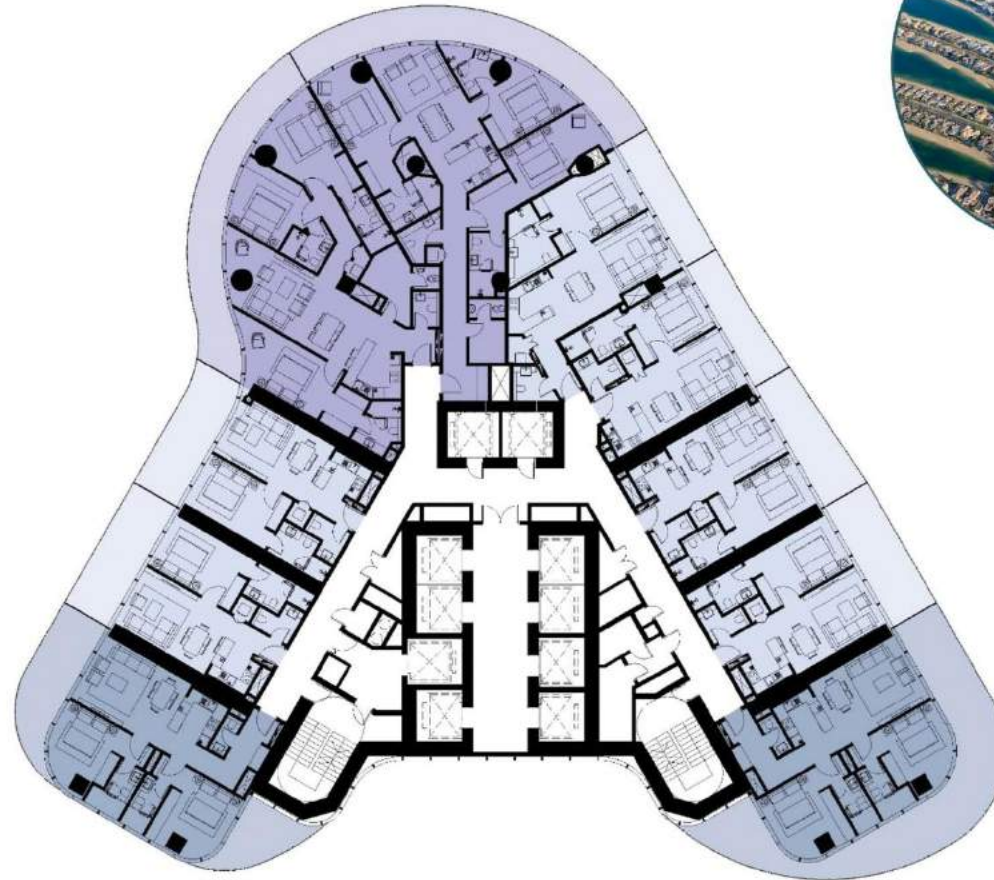
*DAMAC*  
**CASA**

● 1 BEDROOM

● 2 BEDROOMS

● 3 BEDROOMS

● PALM JUMEIRAH - SEA VIEW







*DAMAC*  
CASA





*DAMAC*  
CASA



*DAMAC*  
CASA





# TOWER CONFIGURATION

## 2B+G+2P+43F+R

**DAMAC**  
**CASA**



### CROWN LEVEL

- ISLAND POOL
- FLOATING BEDS
- SWIMMING POOL
- RAIN ROOM
- SKY/FLOATING BEDS

### LEVEL 1<sup>st</sup> – 43<sup>RD</sup>

- 1-, 2- & 3-BR LUXURY APARTMENTS
- 3-, 4- & 5-BR SUPER LUXURY APARTMENTS

### PODIUM ROOFTOP

- AQUA GYM
- SAUNA AND STEAM
- JACUZZI
- KIDS AREA
- BBQ/DINING AREAS
- PALM GARDEN
- AQUA ART
- SCUBA SIMULATOR
- SWIMMING POOL
- BEACH CABANAS
- CHILL OUT LOUNGES
- AQUA SPA

### PODIUM 1<sup>ST</sup> – 2<sup>ND</sup> TOWNHOUSES

### ARRIVAL

- AQUARIUM DROP OFF
- AQUARIUM HALL





*DAMAC*  
CASA





LOBBY

*DAMAC*  
CASA





LOBBY

*DAMAC*  
CASA





# AMENITIES

*DAMAC*  
CASA

## Sketch aquarium

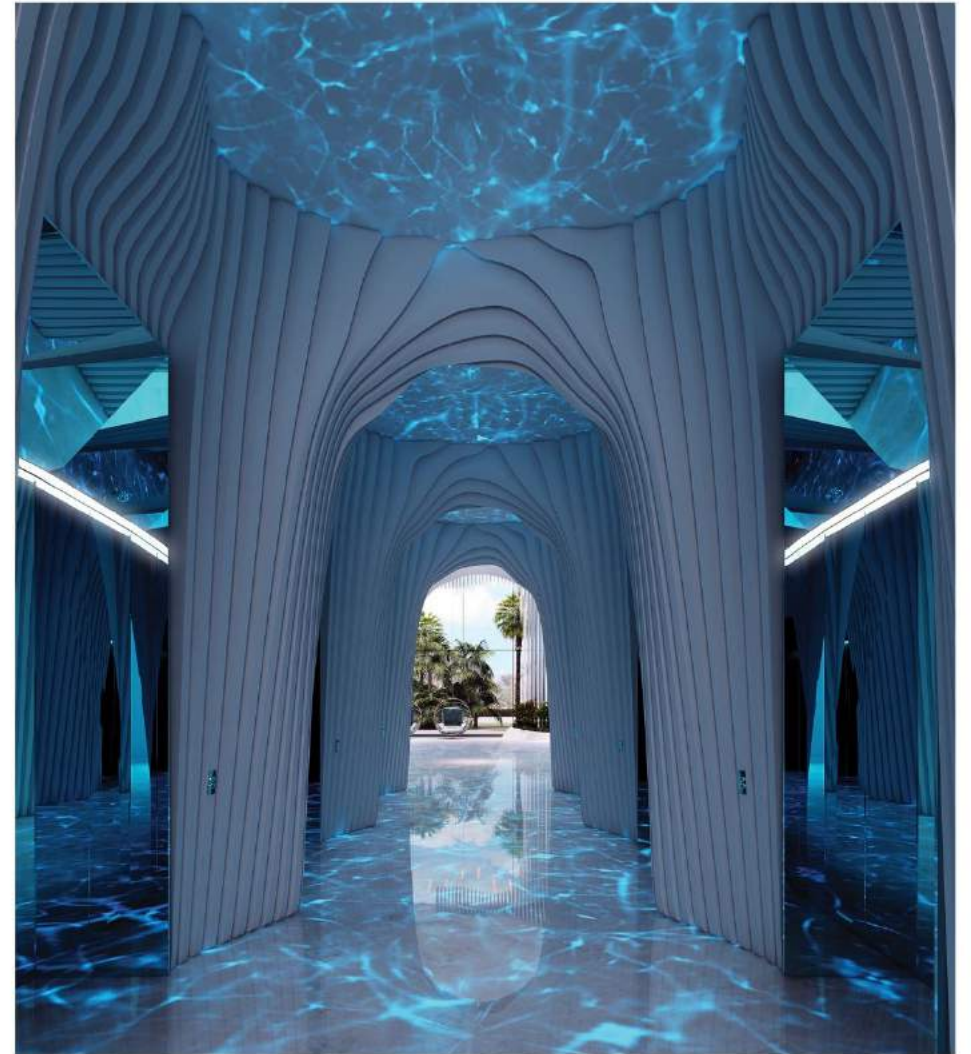




# AMENITIES

*DAMAC*  
CASA

Beach walking feeling  
in corridors





# Artificial beach

*DAMAC*  
CASA





# AMENITIES

*DAMAC*  
CASA

## Check-in experience





# AMENITIES

*DAMAC*  
CASA

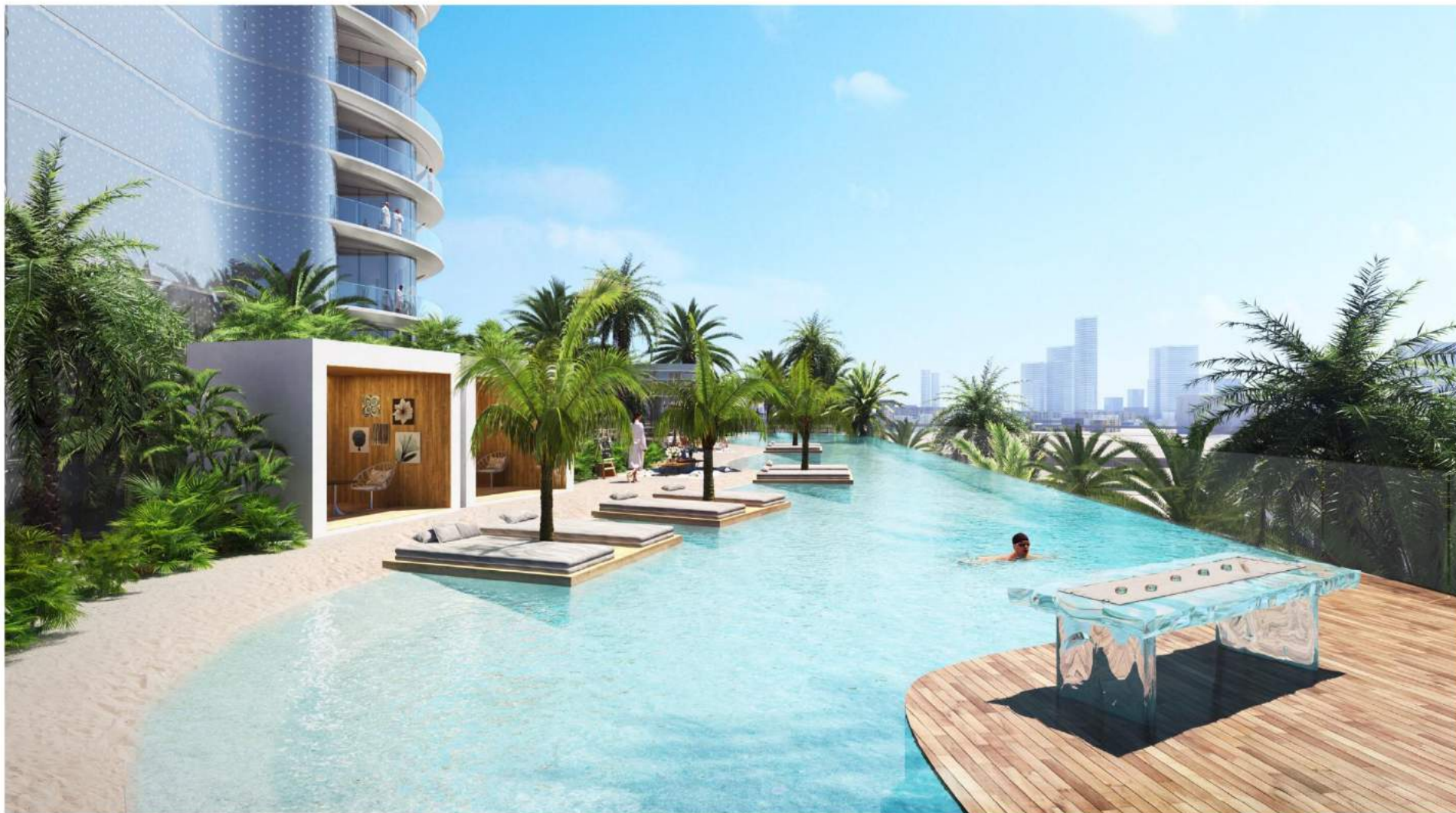
Exclusive bracelets for  
cabana access





# Floating beds/ beach cabanas

*DAMAC*  
CASA





# Aqua gym

*DAMAC*  
CASA





# Aqua art & aqua gym

*DAMAC*  
CASA





Spa

*DAMAC*  
CASA





# Scuba simulator with VR headset

*DAMAC*  
CASA

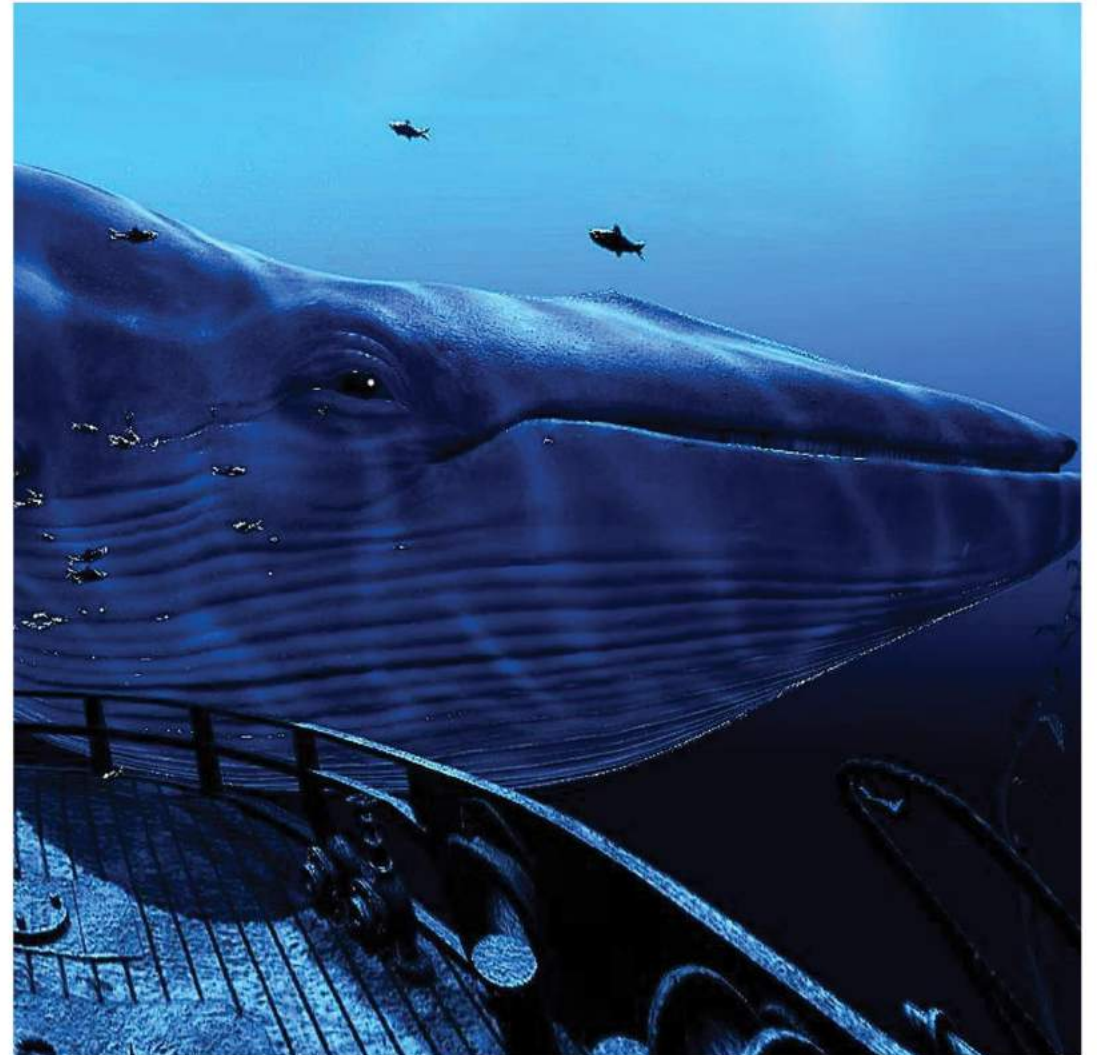




# AMENITIES

*DAMAC*  
CASA

Scuba simulator with headset





*DAMAC*  
CASA







*DAMAC*  
CASA



*DAMAC*  
CASA





# AMENITIES

*DAMAC*  
CASA

## Sky/floating beds





*DAMAC*  
CASA

FLOOR PLANS



# FLOOR PLANS

**DAMAC**  
**CASA**



1-BR LUXURY TYPE A1  
SALEABLE AREA: 798 SQFT



2-BR LUXURY TYPE A1  
SALEABLE AREA: 1367 SQFT



3-BR LUXURY TYPE A1  
SALEABLE AREA: 2003 SQFT



# FLOOR PLANS

**DAMAC**  
**CASA**



3-BR SUPER LUXURY TYPE SLA  
SALEABLE AREA: 3852 SQFT



4-BR SUPER LUXURY TYPE SLA  
SALEABLE AREA: 4778 SQFT



5-BR SUPER LUXURY TYPE SLA  
SALEABLE AREA: 5940 SQFT



*DAMAC*  
CASA

INTERIOR DESIGN



# Living/dining room

*DAMAC*  
CASA





# Master bedroom

*DAMAC*  
CASA





# Walk-in closet

*DAMAC*  
CASA





# Master bathroom

*DAMAC*  
CASA





# Master bathroom

*DAMAC*  
CASA





# Terrace

*DAMAC*  
CASA







# COMMERCIAL TERMS & PAYMENT PLAN



# COMMERCIAL TERMS & PAYMENT PLAN

**DAMAC**  
**CASA**

## 1-BEDROOM LUXURY

STARTING FROM

AED 2.48 M

## 2-BEDROOM LUXURY

STARTING FROM

AED 3.62 M

## 3-BEDROOM LUXURY

STARTING FROM

AED 5.11 M

## 3-BEDROOM SUPER LUXURY

STARTING FROM

AED 13.38 M

## 4-BEDROOM SUPER LUXURY

STARTING FROM

AED 17.91 M

## 5-BEDROOM SUPER LUXURY

STARTING FROM

AED 23.61 M

DAMAC CASA		
Description	Milestone Event	(%) Value
DEPOSIT	Immediate	20
1st INSTALLMENT	Within 3 Months of Sale Date	3.75
2nd INSTALLMENT	Within 6 Months of Sale Date	3.75
3rd INSTALLMENT	Within 9 Months of Sale Date	3.75
4th INSTALLMENT	Within 12 Months of Sale Date	3.75
5th INSTALLMENT	Within 15 Months of Sale Date	3.75
6th INSTALLMENT	Within 18 Months of Sale Date	3.75
7th INSTALLMENT	Within 21 Months of Sale Date	3.75
8th INSTALLMENT	Within 24 Months of Sale Date	3.75
9th INSTALLMENT	Within 27 Months of Sale Date	3.75
10th INSTALLMENT	Within 30 Months of Sale Date	3.75
11th INSTALLMENT	Within 33 Months of Sale Date	3.75
12th INSTALLMENT	Within 36 Months of Sale Date	3.75
13th INSTALLMENT	Within 39 Months of Sale Date	3.75
14th INSTALLMENT	Within 42 Months Of Sale Date	3.75
15th INSTALLMENT	Within 45 Months Of Sale Date	3.75
16th INSTALLMENT	Within 48 Months Of Sale Date	3.75
17th INSTALLMENT	On Completion	20

**4% DLD FEE TO BE PAID IN ADDITION TO THE INITIAL DEPOSIT.**



THANK YOU