



# AVION

RESIDENCE

DUBAI SOUTH

## Floor Plans



RERA PROJECT REGISTRATION NUMBER: 3653 | DEVELOPER REGISTRATION NUMBER: 2142







AVION  
RESIDENCE



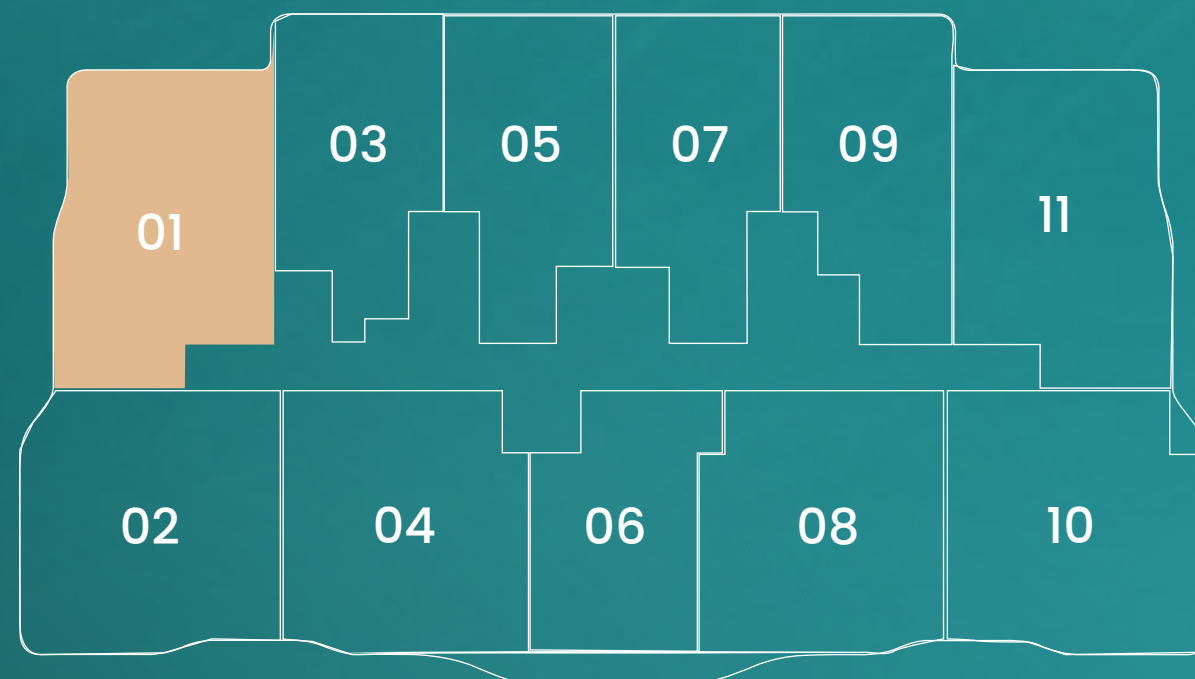
APARTMENT PLANS

2 BHK – TYPE A

Unit Area 962.40 sq ft.  
Balcony Area 224.64 sq ft.

Total 1187.04 sq.ft.

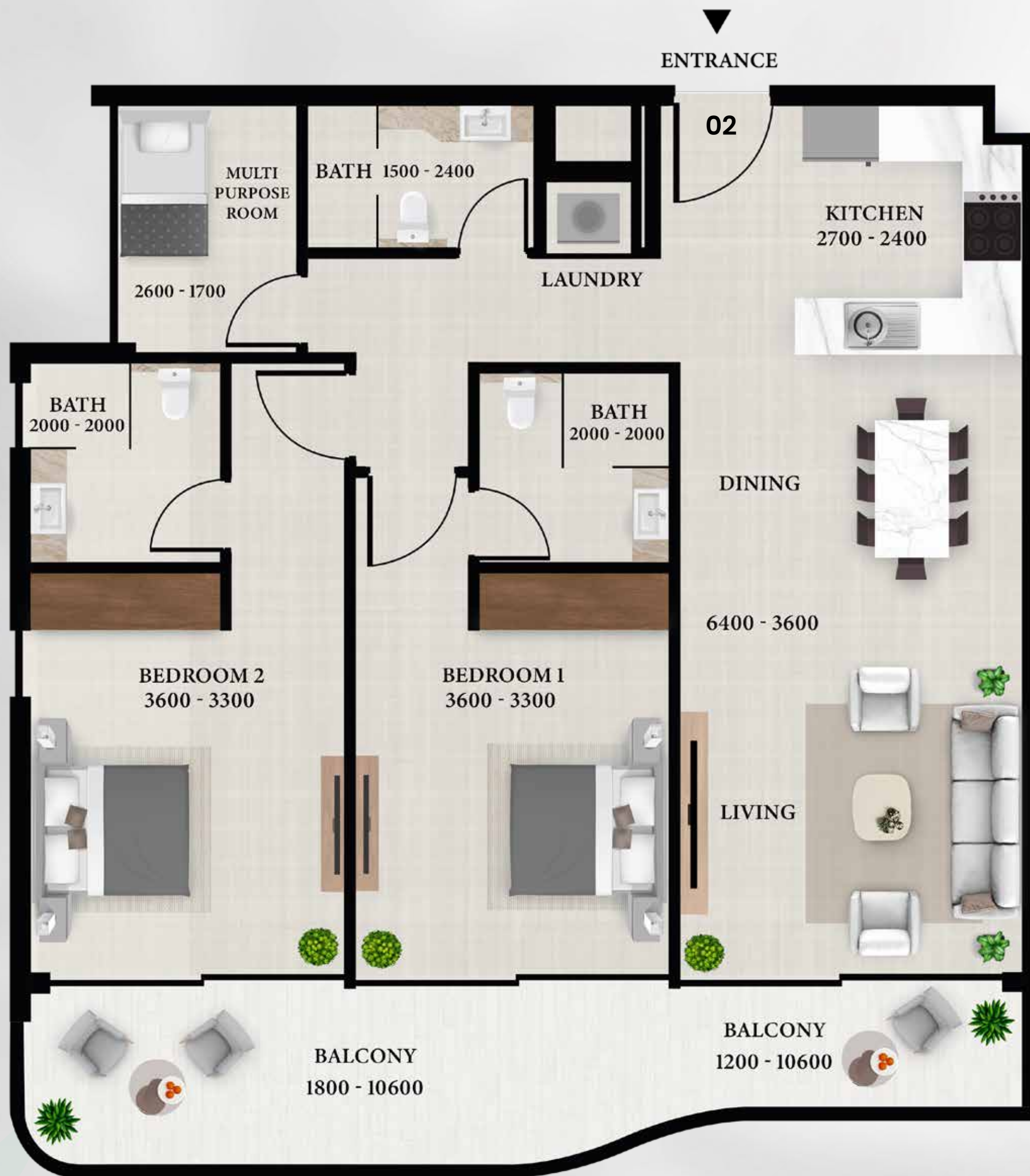
FLOOR PLATE (1<sup>ST</sup> TO 6<sup>TH</sup> FLOOR)



DISCLAIMERS

1. All dimensions are in millimeter, and measured from finish to finish excluding construction tolerances. 2. All materials, dimensions and drawings are approximate only. 3. Information is subject to change without notice, at developer's absolute discretion. 4. Actual area may vary from the stated area. 5. Drawings are not to scale. 6. All images used are for illustrative purposes only and do not represent the actual size, features, specifications, fittings and furnishing. 7. The developer reserves the right to make revisions or alterations, at its absolute discretion, without any liability whatsoever.





#### DISCLAIMERS

1. All dimensions are in millimeter, and measured from finish to finish excluding construction tolerances. 2. All materials, dimensions and drawings are approximate only. 3. Information is subject to change without notice, at developer's absolute discretion. 4. Actual area may vary from the stated area. 5. Drawings are not to scale. 6. All images used are for illustrative purposes only and do not represent the actual size, features, specifications, fittings and furnishing. 7. The developer reserves the right to make revisions or alterations, at its absolute discretion, without any liability whatsoever.

**AVION**  
RESIDENCE

#### APARTMENT PLANS

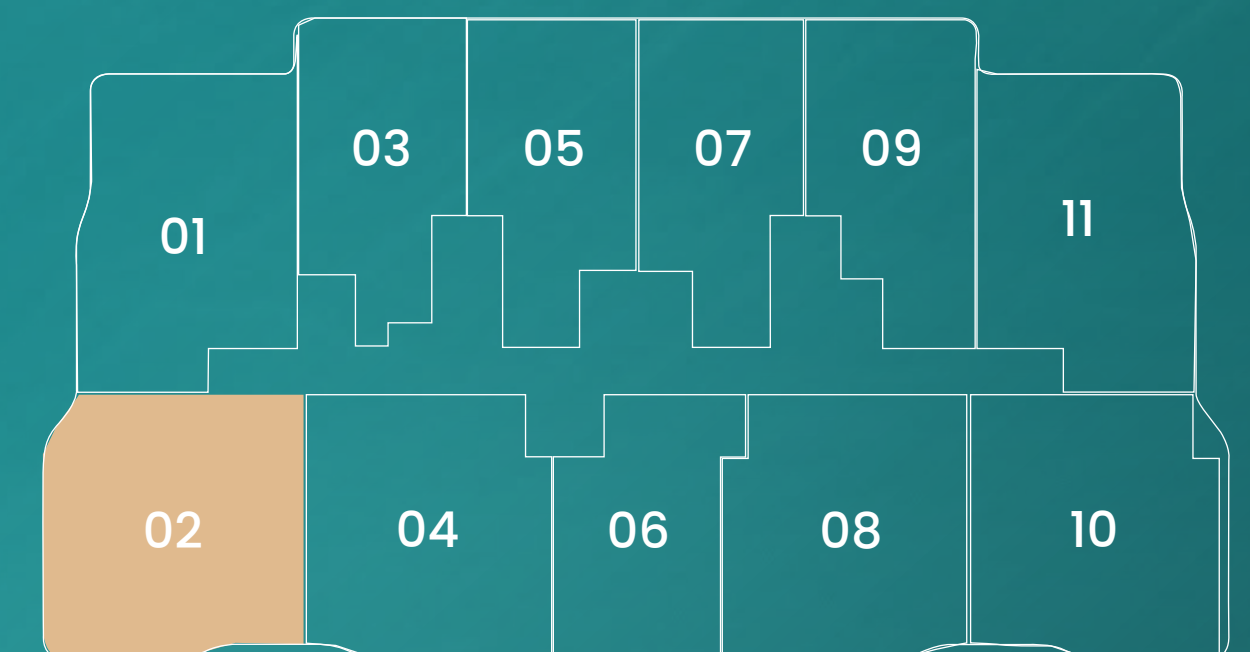
### 2.5 BHK – TYPE A



Unit Area 1018.91 sq ft.  
Balcony Area 182.87 sq ft.

**Total 1201.78 sq.ft.**

#### FLOOR PLATE (1<sup>ST</sup> - 3<sup>RD</sup> - 5<sup>TH</sup> FLOOR)



**SV** SKY VIEW  
DEVELOPMENT



APARTMENT PLANS

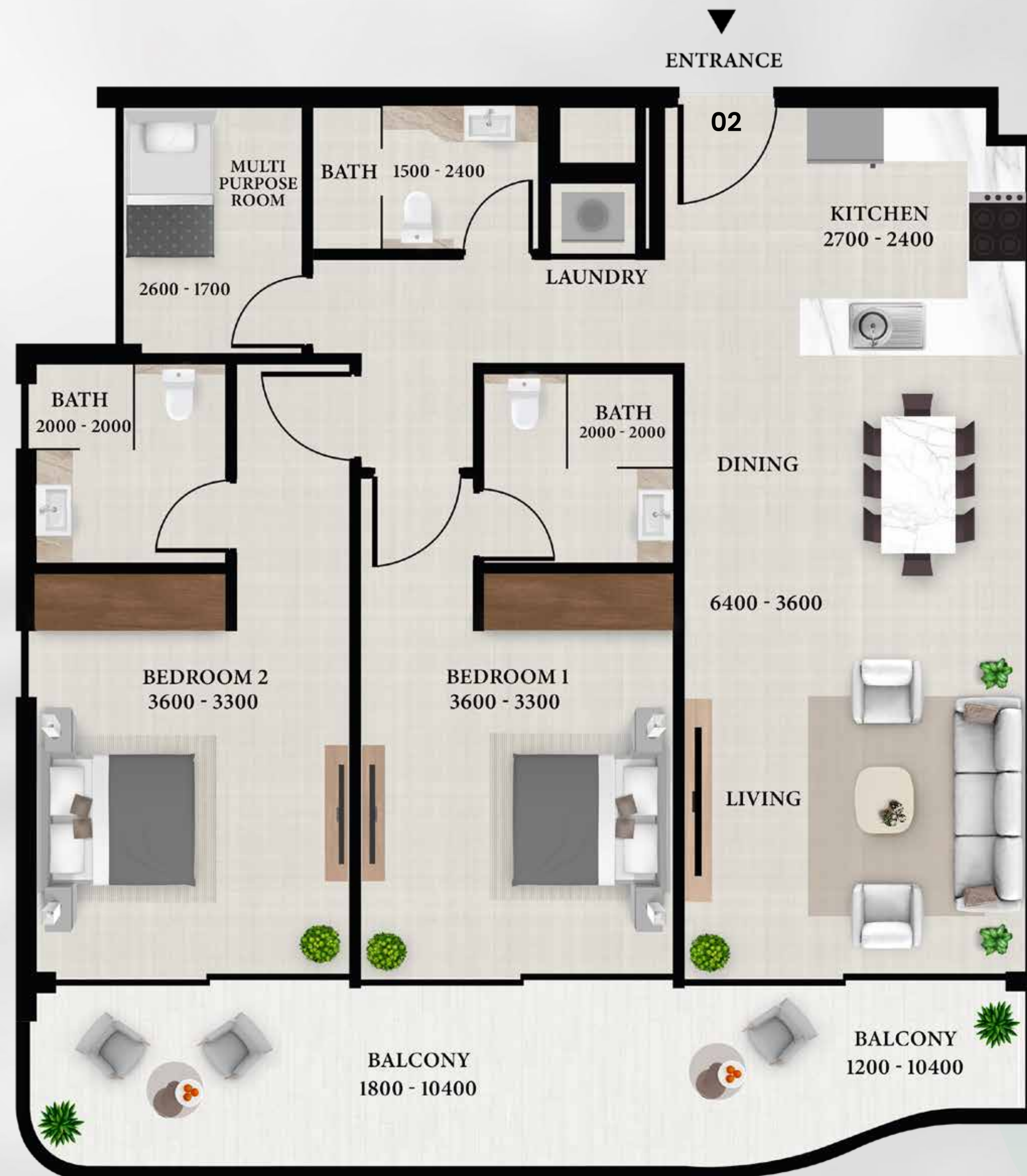
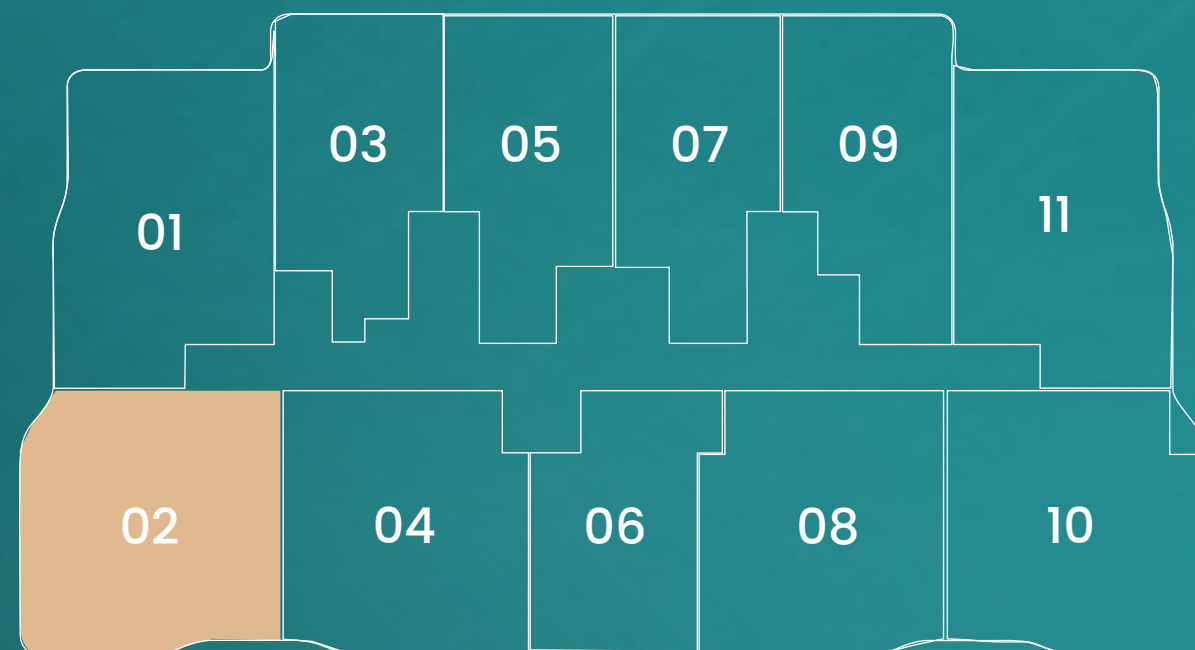
2.5 BHK – TYPE A1

Unit Area 1018.80 sq.ft.

Balcony Area 197.73 sq.ft.

Total 1216.53 sq.ft.

FLOOR PLATE (2<sup>ND</sup> - 4<sup>TH</sup> - 6<sup>TH</sup> FLOOR)



DISCLAIMERS

1. All dimensions are in millimeter, and measured from finish to finish excluding construction tolerances. 2. All materials, dimensions and drawings are approximate only. 3. Information is subject to change without notice, at developer's absolute discretion. 4. Actual area may vary from the stated area. 5. Drawings are not to scale. 6. All images used are for illustrative purposes only and do not represent the actual size, features, specifications, fittings and furnishing. 7. The developer reserves the right to make revisions or alterations, at its absolute discretion, without any liability whatsoever.





#### DISCLAIMERS

1. All dimensions are in millimeter, and measured from finish to finish excluding construction tolerances. 2. All materials, dimensions and drawings are approximate only. 3. Information is subject to change without notice, at developer's absolute discretion. 4. Actual area may vary from the stated area. 5. Drawings are not to scale. 6. All images used are for illustrative purposes only and do not represent the actual size, features, specifications, fittings and furnishing. 7. The developer reserves the right to make revisions or alterations, at its absolute discretion, without any liability whatsoever.

**AVION**  
RESIDENCE

#### APARTMENT PLANS

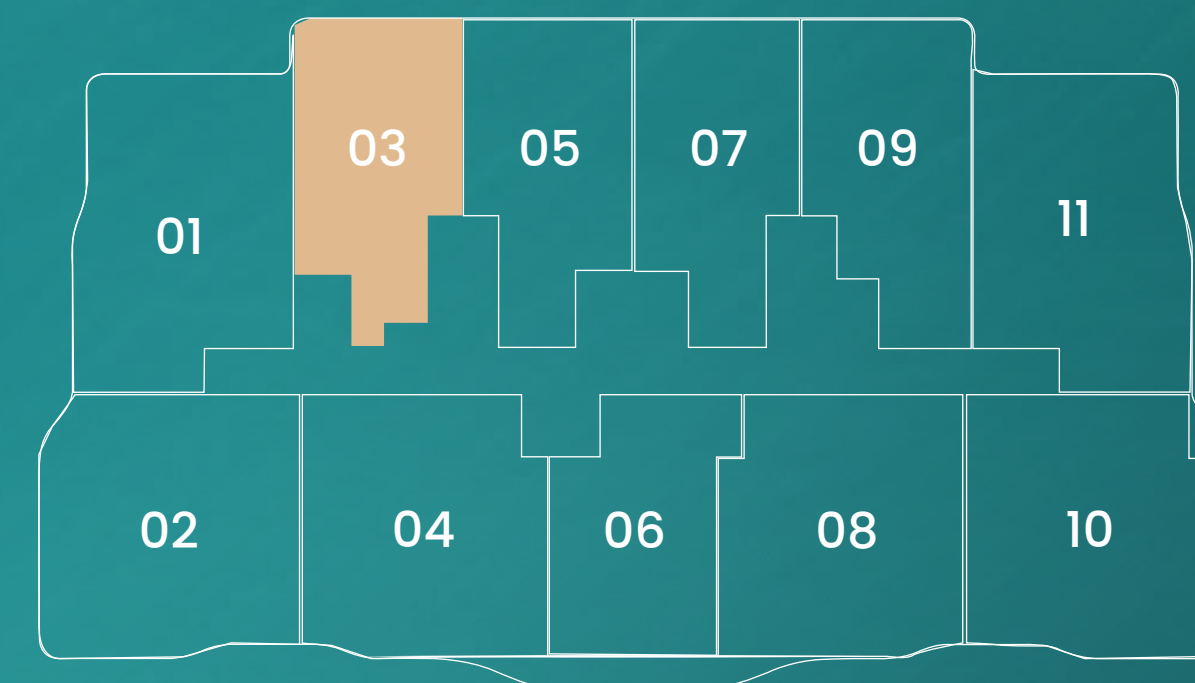
### 1.5 BHK – TYPE A



Unit Area 746.48 sq ft.  
Balcony Area 139.50 sq ft.

**Total 885.98 sq.ft.**

#### FLOOR PLATE (1<sup>ST</sup> TO 6<sup>TH</sup> FLOOR)



**SV** SKY VIEW  
DEVELOPMENT



APARTMENT PLANS

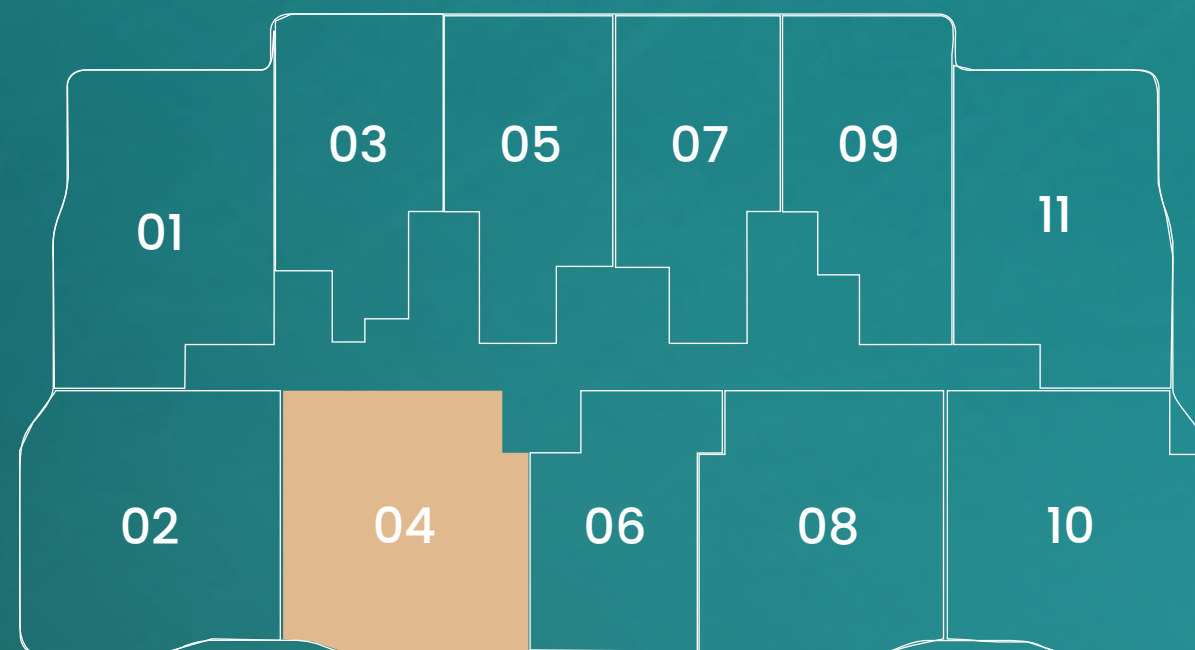
2.5 BHK – TYPE B

Unit Area 1010.62 sq ft.

Balcony Area 197.95 sq ft.

**Total 1208.57 sq.ft.**

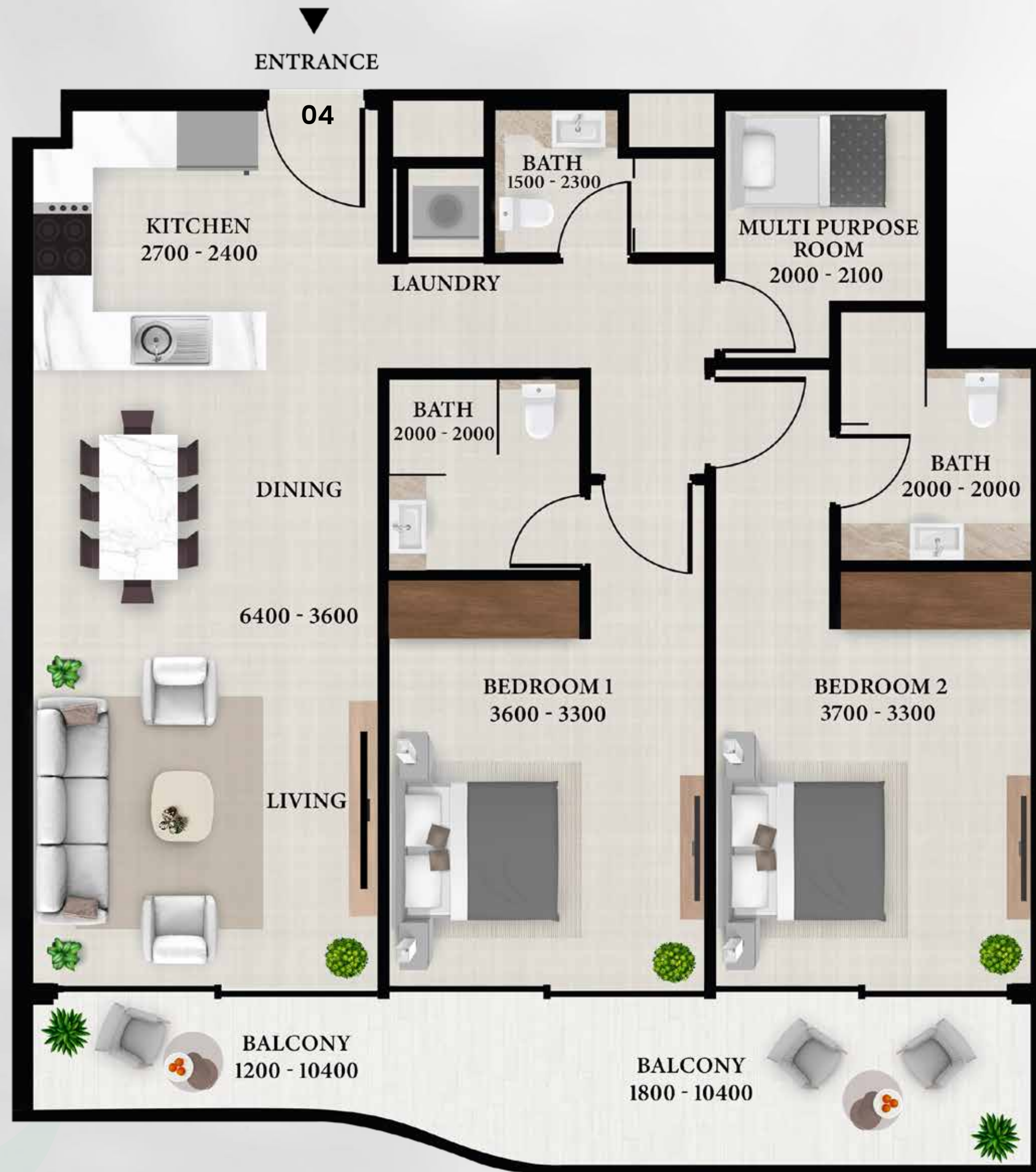
FLOOR PLATE (1<sup>ST</sup> - 3<sup>RD</sup> - 5<sup>TH</sup> FLOOR)



DISCLAIMERS

1. All dimensions are in millimeter, and measured from finish to finish excluding construction tolerances. 2. All materials, dimensions and drawings are approximate only. 3. Information is subject to change without notice, at developer's absolute discretion. 4. Actual area may vary from the stated area. 5. Drawings are not to scale. 6. All images used are for illustrative purposes only and do not represent the actual size, features, specifications, fittings and furnishing. 7. The developer reserves the right to make revisions or alterations, at its absolute discretion, without any liability whatsoever.





DISCLAIMERS

1. All dimensions are in millimeter, and measured from finish to finish excluding construction tolerances. 2. All materials, dimensions and drawings are approximate only. 3. Information is subject to change without notice, at developer's absolute discretion. 4. Actual area may vary from the stated area. 5. Drawings are not to scale. 6. All images used are for illustrative purposes only and do not represent the actual size, features, specifications, fittings and furnishing. 7. The developer reserves the right to make revisions or alterations, at its absolute discretion, without any liability whatsoever.

AVION  
RESIDENCE

APARTMENT PLANS

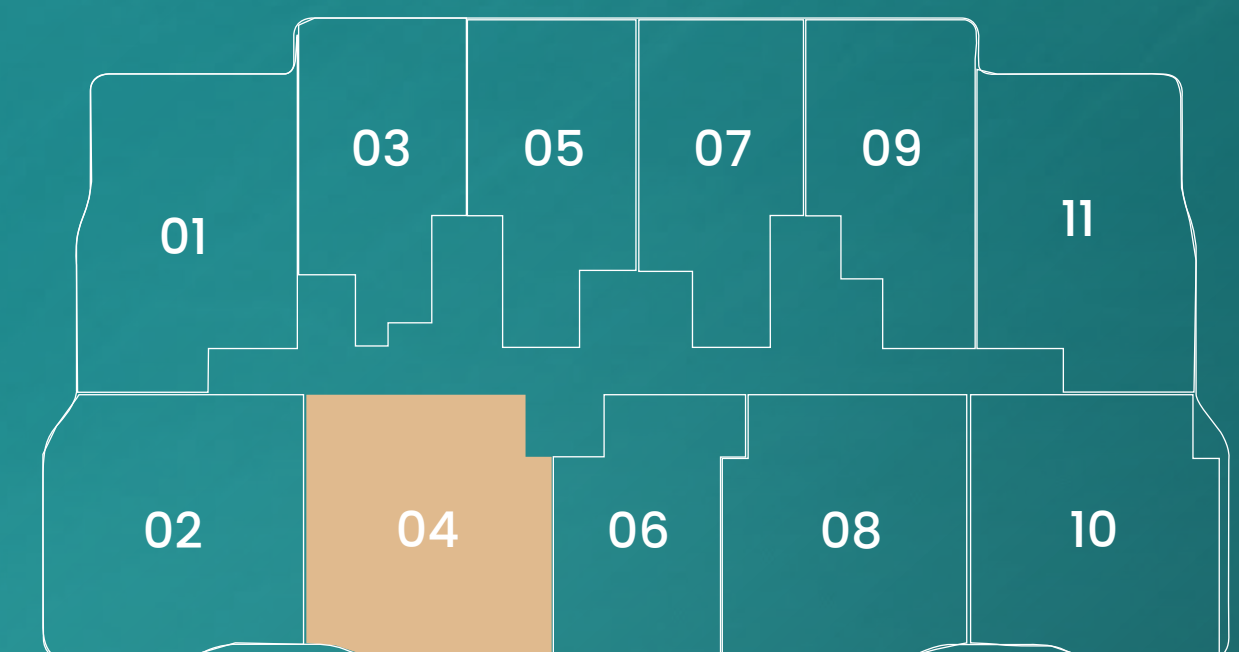
2.5 BHK – TYPE B1



Unit Area 1010.62 sq ft.  
Balcony Area 183.09 sq ft.

Total 1193.71 sq.ft.

FLOOR PLATE (2<sup>ND</sup> - 4<sup>TH</sup> - 6<sup>TH</sup> FLOOR)



SV SKY VIEW  
DEVELOPMENT



APARTMENT PLANS

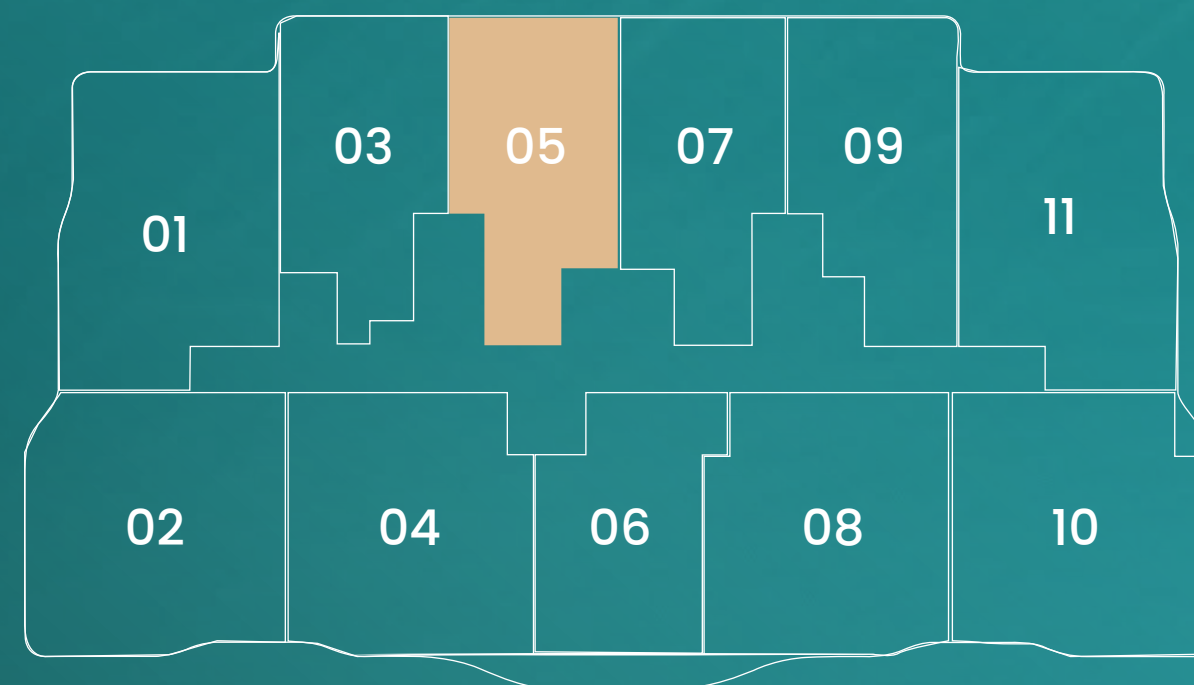
1.5 BHK – TYPE B

Unit Area 742.17 sq.ft.

Balcony Area 143.37 sq.ft.

**Total 885.54 sq.ft.**

FLOOR PLATE (1<sup>ST</sup> TO 6<sup>TH</sup> FLOOR)



DISCLAIMERS

1. All dimensions are in millimeter, and measured from finish to finish excluding construction tolerances. 2. All materials, dimensions and drawings are approximate only. 3. Information is subject to change without notice, at developer's absolute discretion. 4. Actual area may vary from the stated area. 5. Drawings are not to scale. 6. All images used are for illustrative purposes only and do not represent the actual size, features, specifications, fittings and furnishing. 7. The developer reserves the right to make revisions or alterations, at its absolute discretion, without any liability whatsoever.





DISCLAIMERS

1. All dimensions are in millimeter, and measured from finish to finish excluding construction tolerances. 2. All materials, dimensions and drawings are approximate only. 3. Information is subject to change without notice, at developer's absolute discretion. 4. Actual area may vary from the stated area. 5. Drawings are not to scale. 6. All images used are for illustrative purposes only and do not represent the actual size, features, specifications, fittings and furnishing. 7. The developer reserves the right to make revisions or alterations, at its absolute discretion, without any liability whatsoever.

APARTMENT PLANS

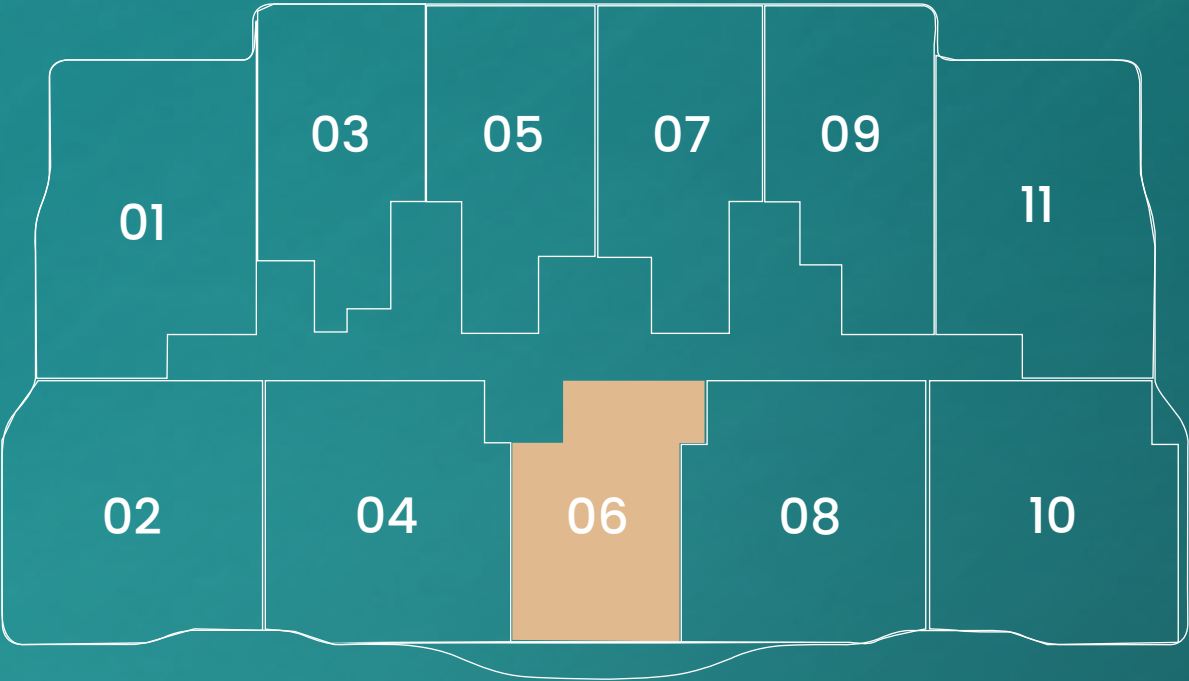
1.5 BHK – TYPE C



Unit Area 684.15 sq ft.  
Balcony Area 139.50 sq ft.

Total 823.65 sq.ft.

FLOOR PLATE (1<sup>ST</sup> TO 6<sup>TH</sup> FLOOR)





APARTMENT PLANS

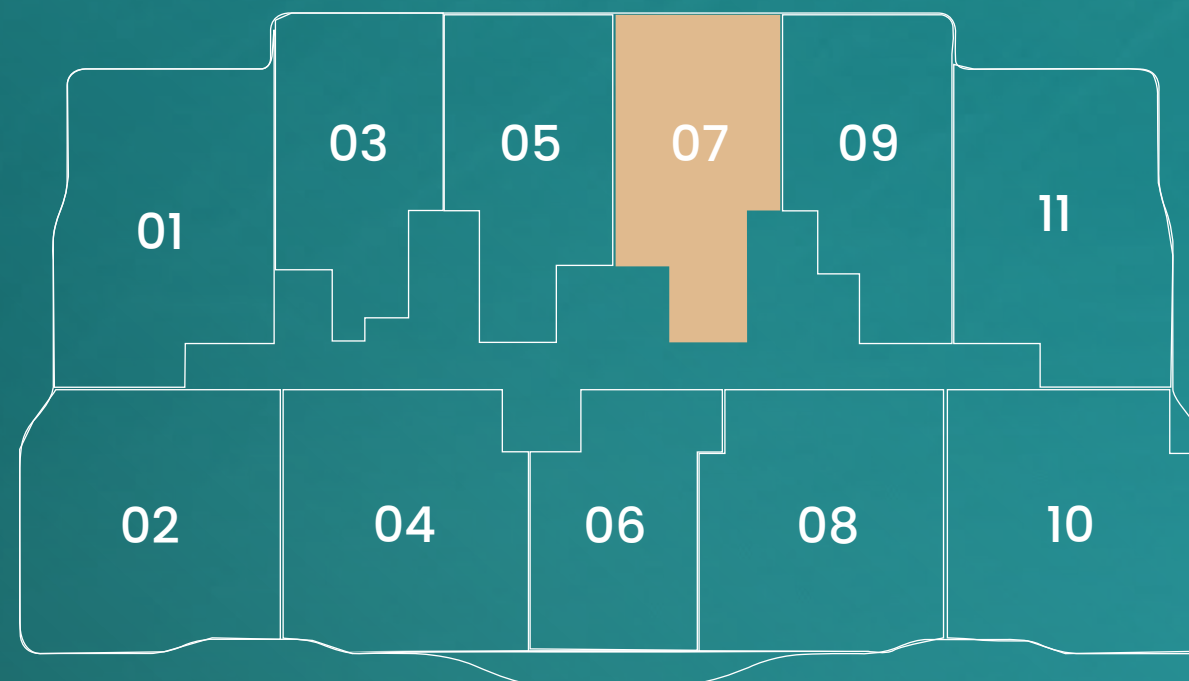
1.5 BHK – TYPE B

Unit Area 742.17 sq ft.

Balcony Area 143.37 sq ft.

**Total 885.54 sq.ft.**

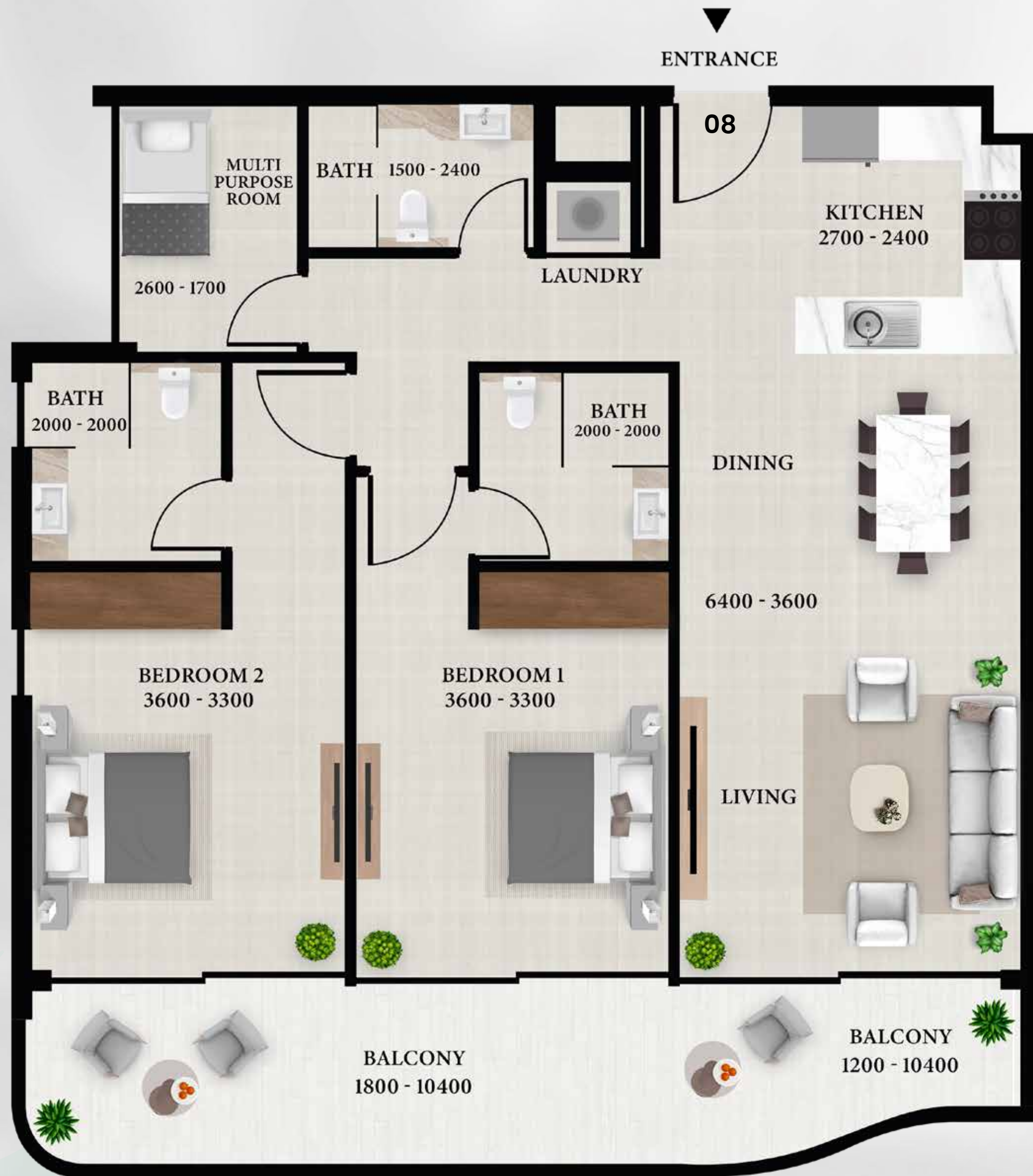
FLOOR PLATE (1<sup>ST</sup> TO 6<sup>TH</sup> FLOOR)



DISCLAIMERS

1. All dimensions are in millimeter, and measured from finish to finish excluding construction tolerances. 2. All materials, dimensions and drawings are approximate only. 3. Information is subject to change without notice, at developer's absolute discretion. 4. Actual area may vary from the stated area. 5. Drawings are not to scale. 6. All images used are for illustrative purposes only and do not represent the actual size, features, specifications, fittings and furnishing. 7. The developer reserves the right to make revisions or alterations, at its absolute discretion, without any liability whatsoever.





#### DISCLAIMERS

1. All dimensions are in millimeter, and measured from finish to finish excluding construction tolerances. 2. All materials, dimensions and drawings are approximate only. 3. Information is subject to change without notice, at developer's absolute discretion. 4. Actual area may vary from the stated area. 5. Drawings are not to scale. 6. All images used are for illustrative purposes only and do not represent the actual size, features, specifications, fittings and furnishing. 7. The developer reserves the right to make revisions or alterations, at its absolute discretion, without any liability whatsoever.

AVION  
RESIDENCE

#### APARTMENT PLANS

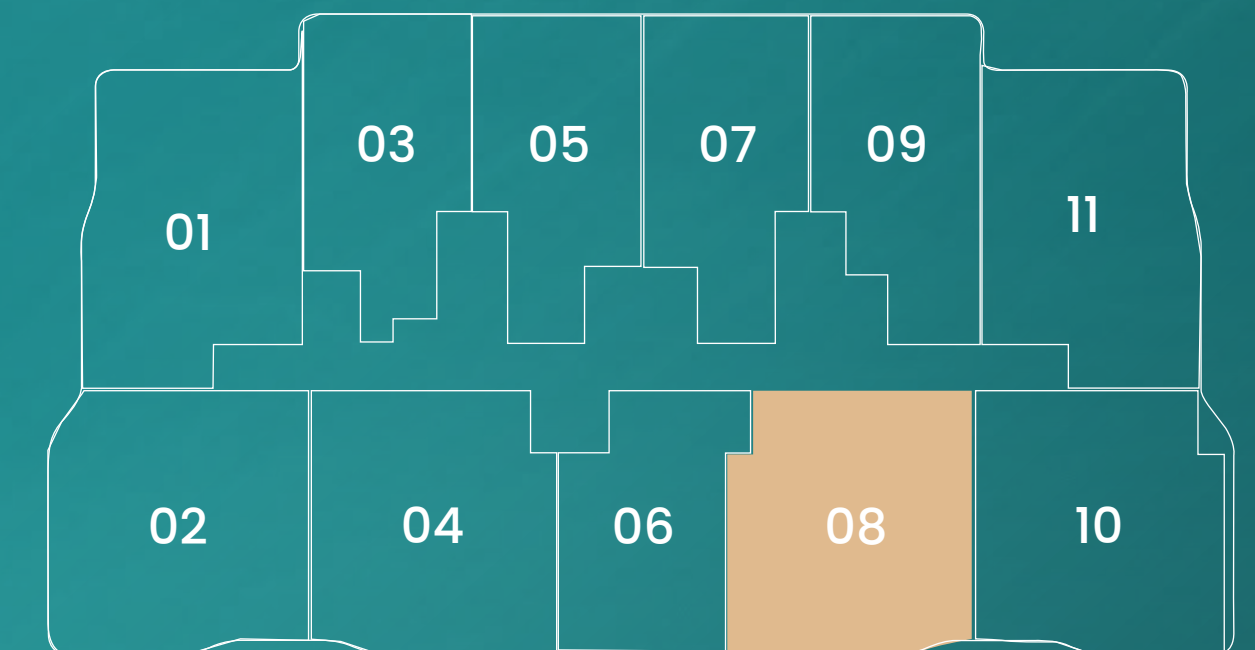
### 2.5 BHK – TYPE A1



Unit Area 1010.62 sq ft.  
Balcony Area 197.94 sq ft.

**Total 1208.56 sq.ft.**

#### FLOOR PLATE (1<sup>ST</sup> – 3<sup>RD</sup> – 5<sup>TH</sup> FLOOR)



SV SKY VIEW  
DEVELOPMENT



APARTMENT PLANS

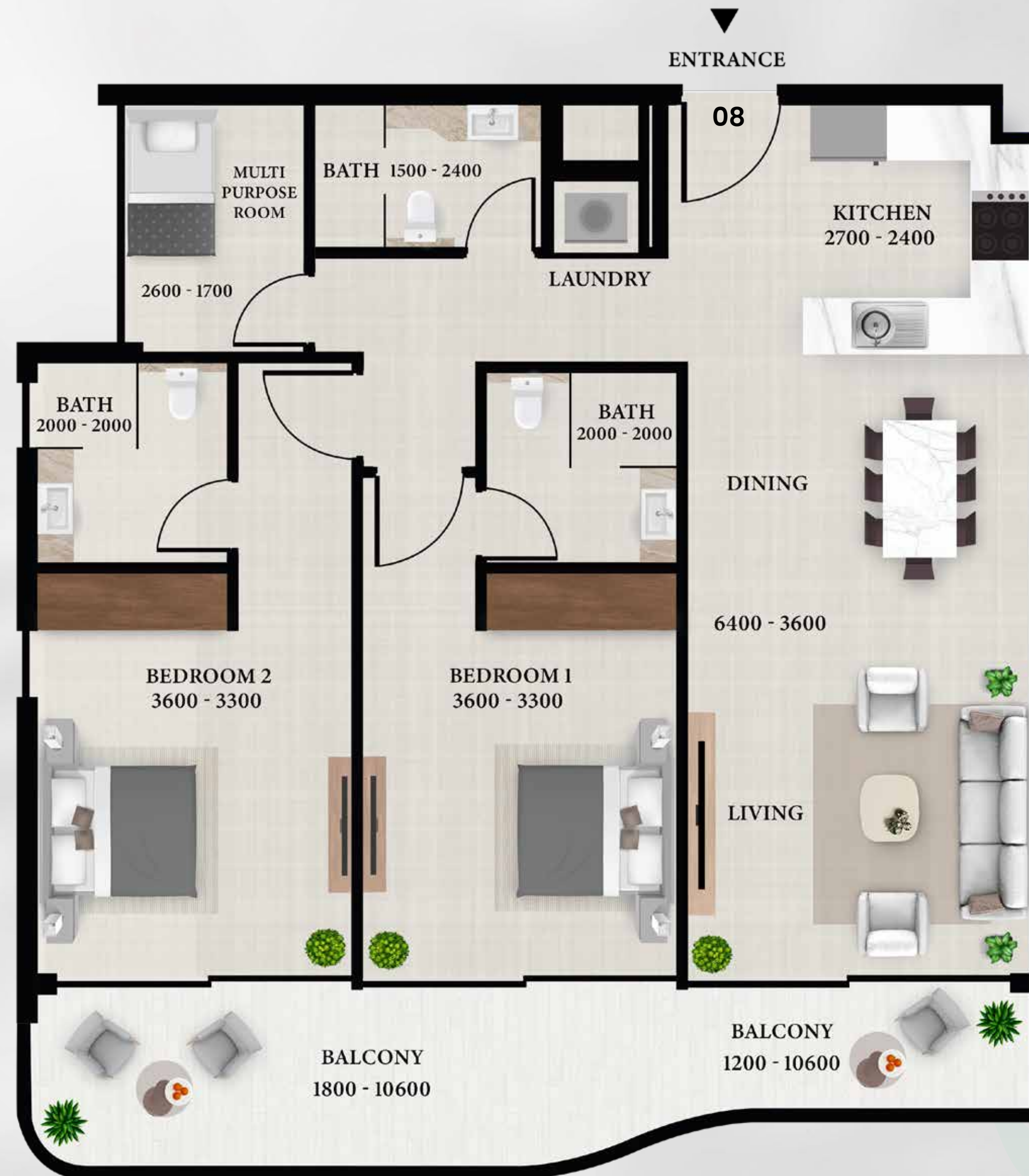
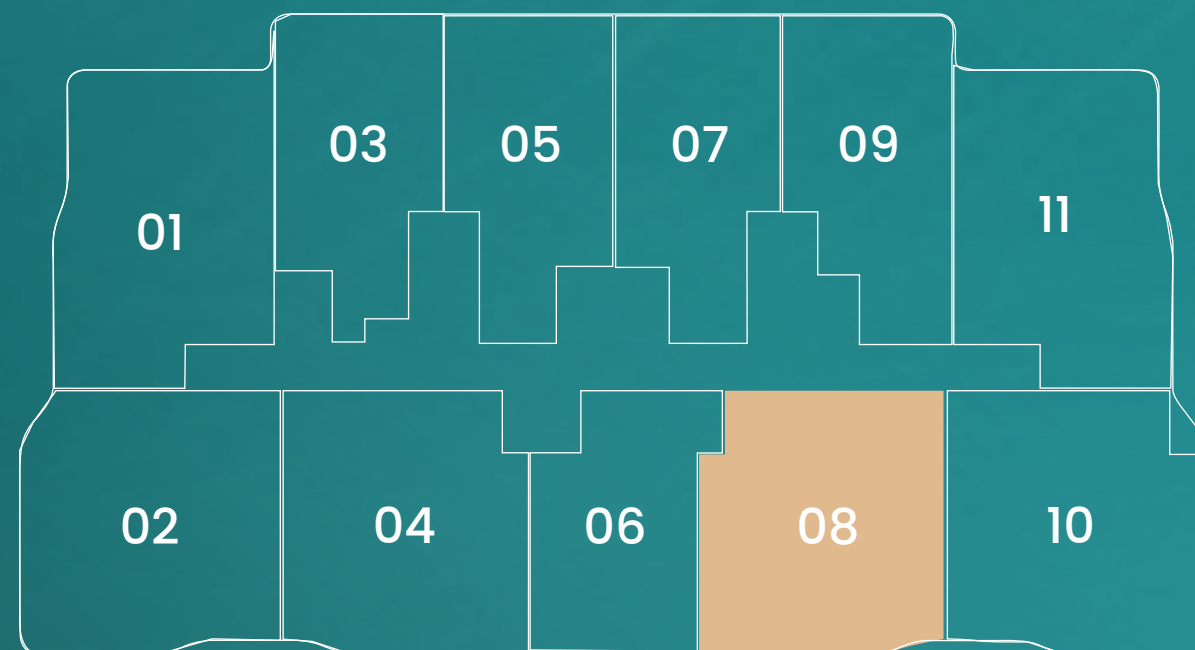
2.5 BHK – TYPE A

Unit Area 1010.62 sq ft.

Balcony Area 183.09 sq ft.

Total 1193.71 sq.ft.

FLOOR PLATE (2<sup>ND</sup> - 4<sup>TH</sup> - 6<sup>TH</sup> FLOOR)



DISCLAIMERS

1. All dimensions are in millimeter, and measured from finish to finish excluding construction tolerances. 2. All materials, dimensions and drawings are approximate only. 3. Information is subject to change without notice, at developer's absolute discretion. 4. Actual area may vary from the stated area. 5. Drawings are not to scale. 6. All images used are for illustrative purposes only and do not represent the actual size, features, specifications, fittings and furnishing. 7. The developer reserves the right to make revisions or alterations, at its absolute discretion, without any liability whatsoever.





#### DISCLAIMERS

1. All dimensions are in millimeter, and measured from finish to finish excluding construction tolerances. 2. All materials, dimensions and drawings are approximate only. 3. Information is subject to change without notice, at developer's absolute discretion. 4. Actual area may vary from the stated area. 5. Drawings are not to scale. 6. All images used are for illustrative purposes only and do not represent the actual size, features, specifications, fittings and furnishing. 7. The developer reserves the right to make revisions or alterations, at its absolute discretion, without any liability whatsoever.

AVION  
RESIDENCE

#### APARTMENT PLANS

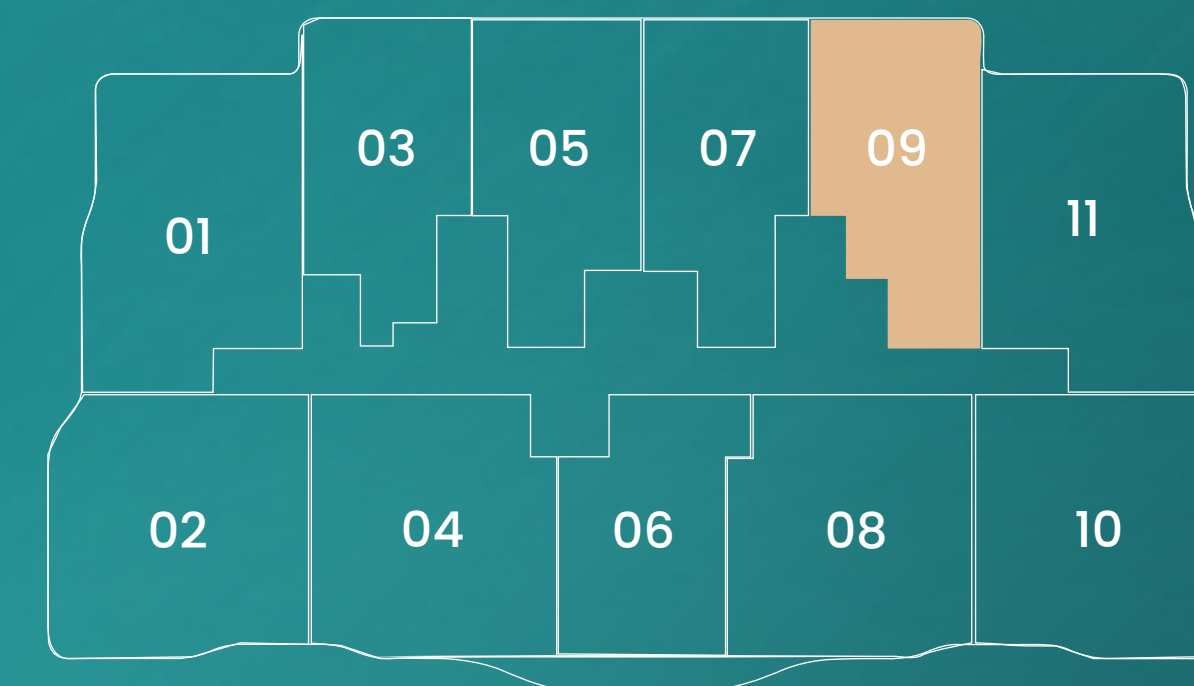
### 1.5 BHK – TYPE A1



Unit Area 753.69 sq ft.  
Balcony Area 139.50 sq ft.

**Total 893.19 sq.ft.**

#### FLOOR PLATE (1<sup>ST</sup> TO 6<sup>TH</sup> FLOOR)



SV SKY VIEW  
DEVELOPMENT



APARTMENT PLANS

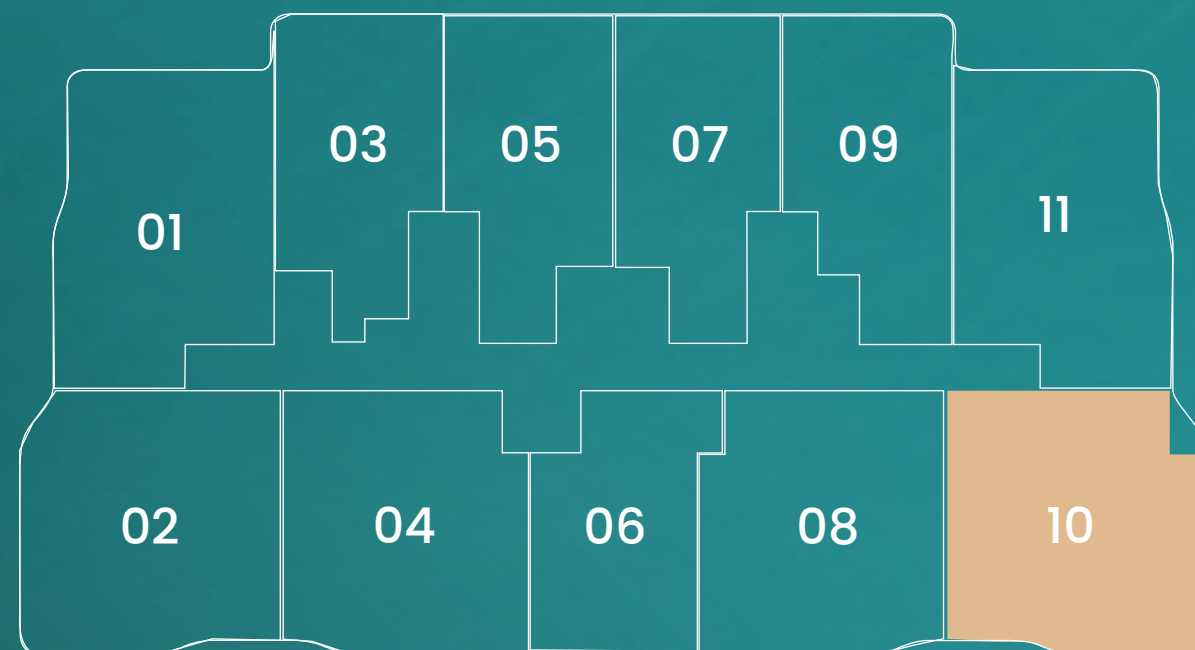
2.5 BHK – TYPE A

Unit Area 1018.80 sq ft.

Balcony Area 182.87 sq ft.

**Total 1201.67 sq.ft.**

FLOOR PLATE (1<sup>ST</sup> - 3<sup>RD</sup> - 5<sup>TH</sup> FLOOR)



DISCLAIMERS

1. All dimensions are in millimeter, and measured from finish to finish excluding construction tolerances. 2. All materials, dimensions and drawings are approximate only. 3. Information is subject to change without notice, at developer's absolute discretion. 4. Actual area may vary from the stated area. 5. Drawings are not to scale. 6. All images used are for illustrative purposes only and do not represent the actual size, features, specifications, fittings and furnishing. 7. The developer reserves the right to make revisions or alterations, at its absolute discretion, without any liability whatsoever.





#### DISCLAIMERS

1. All dimensions are in millimeter, and measured from finish to finish excluding construction tolerances. 2. All materials, dimensions and drawings are approximate only. 3. Information is subject to change without notice, at developer's absolute discretion. 4. Actual area may vary from the stated area. 5. Drawings are not to scale. 6. All images used are for illustrative purposes only and do not represent the actual size, features, specifications, fittings and furnishing. 7. The developer reserves the right to make revisions or alterations, at its absolute discretion, without any liability whatsoever.

**AVION**  
RESIDENCE

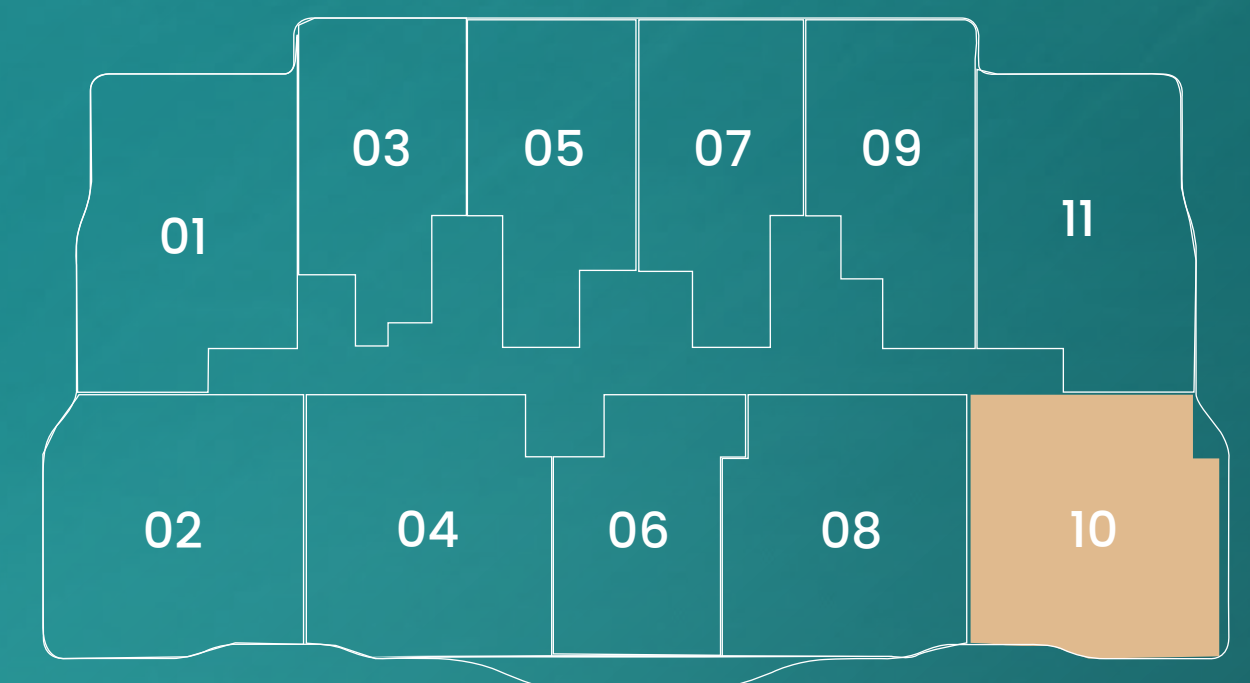
#### APARTMENT PLANS

### 2.5 BHK – TYPE B

Unit Area 1018.91 sq. ft.  
Balcony Area 197.73 sq. ft.

**Total 1216.64 sq.ft.**

#### FLOOR PLATE (2<sup>ND</sup> - 4<sup>TH</sup> - 6<sup>TH</sup> FLOOR)



**SV** SKY VIEW  
DEVELOPMENT



APARTMENT PLANS

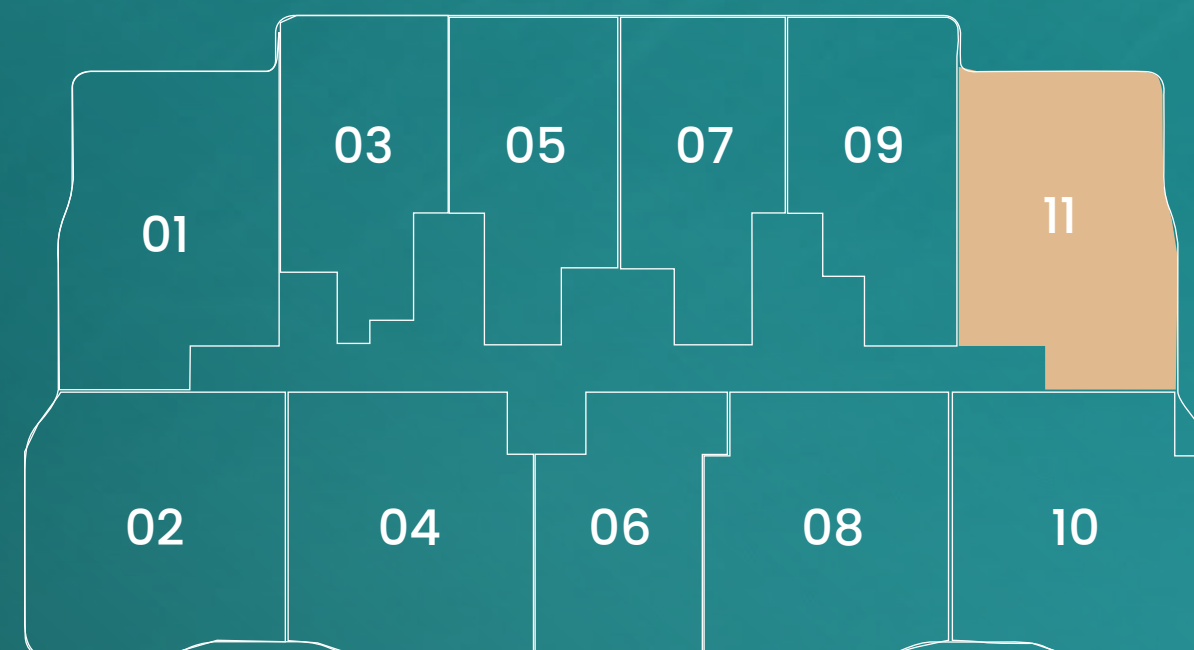
2 BHK – TYPE B

Unit Area 964.01 sq ft.

Balcony Area 224.75 sq ft.

Total 1188.76 sq.ft.

FLOOR PLATE (1<sup>ST</sup> TO 6<sup>TH</sup> FLOOR)



DISCLAIMERS

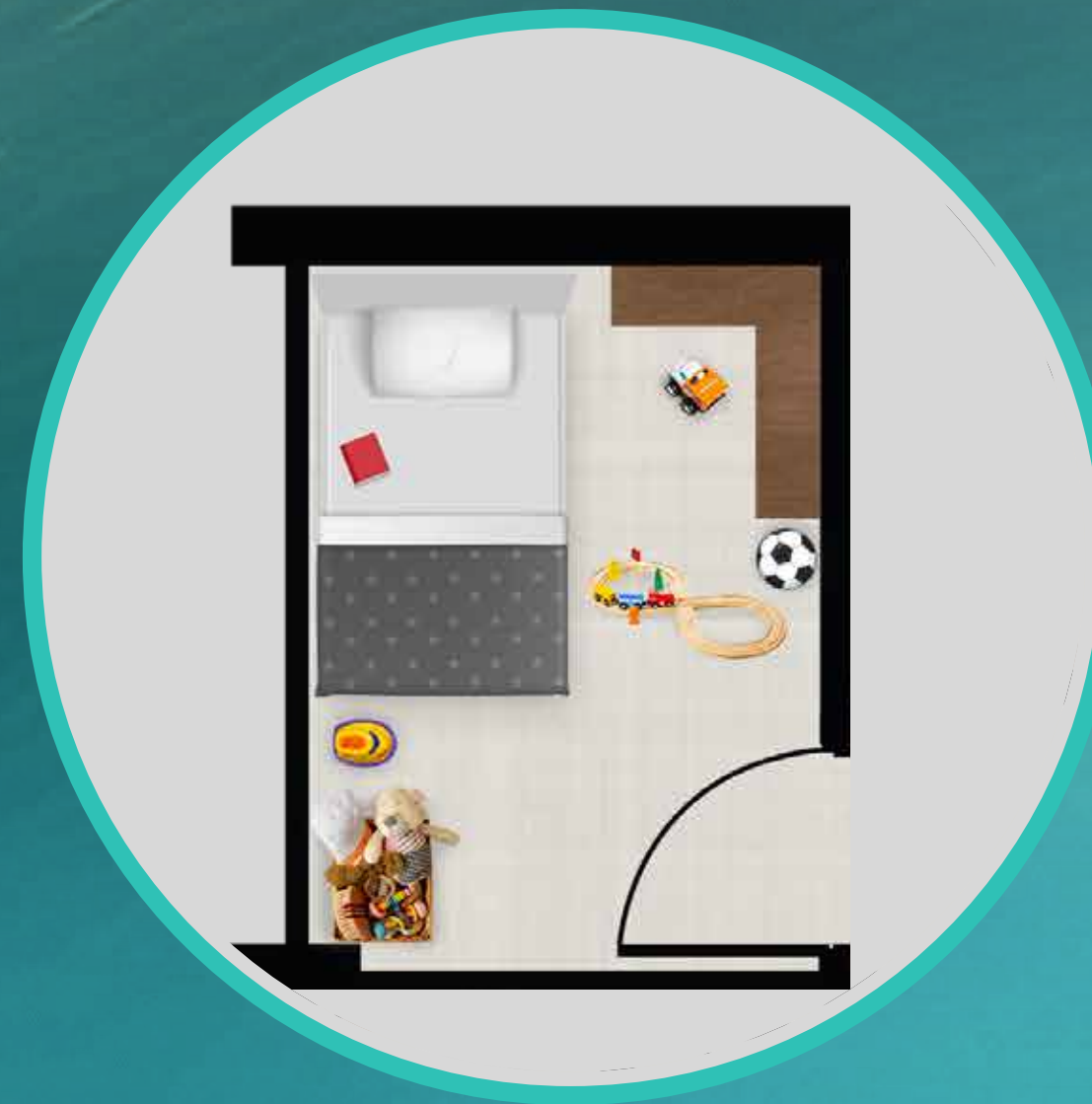
1. All dimensions are in millimeter, and measured from finish to finish excluding construction tolerances. 2. All materials, dimensions and drawings are approximate only. 3. Information is subject to change without notice, at developer's absolute discretion. 4. Actual area may vary from the stated area. 5. Drawings are not to scale. 6. All images used are for illustrative purposes only and do not represent the actual size, features, specifications, fittings and furnishing. 7. The developer reserves the right to make revisions or alterations, at its absolute discretion, without any liability whatsoever.



# MULTI PURPOSE ROOM OPTIONS



**OFFICE SPACE**



**KIDS ROOM**



**YOGA ROOM**



# Floor Plate

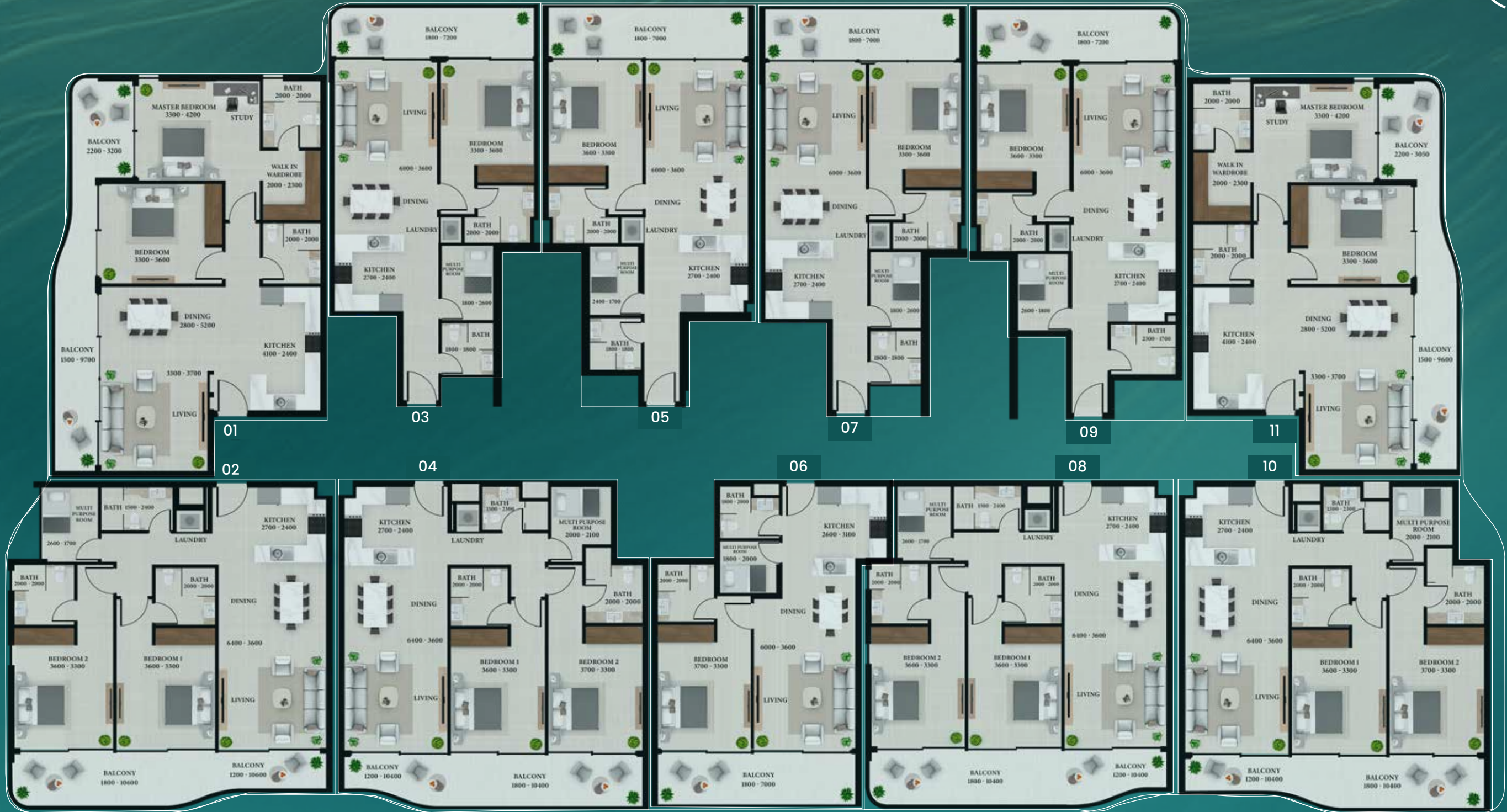
(1<sup>ST</sup> - 3<sup>RD</sup> - 5<sup>TH</sup> FLOOR)



Community View



Street View



Community View



Avenue View



# Floor Plate

(2<sup>ND</sup> - 4<sup>TH</sup> - 6<sup>TH</sup> FLOOR)



Community View



Street View



Community View



Avenue View









T: +971 4 4370431 | M: +971 58 686 6567 | E: [info@skyviewdevelopment.ae](mailto:info@skyviewdevelopment.ae)

[www.skyviewdevelopment.ae](http://www.skyviewdevelopment.ae)  
800SKYVIEW

RERA PROJECT REGISTRATION NUMBER: 3653 | DEVELOPER REGISTRATION NUMBER: 2142