



COASTAL  
HAVEN  
BY PRESTIGE HARBOUR

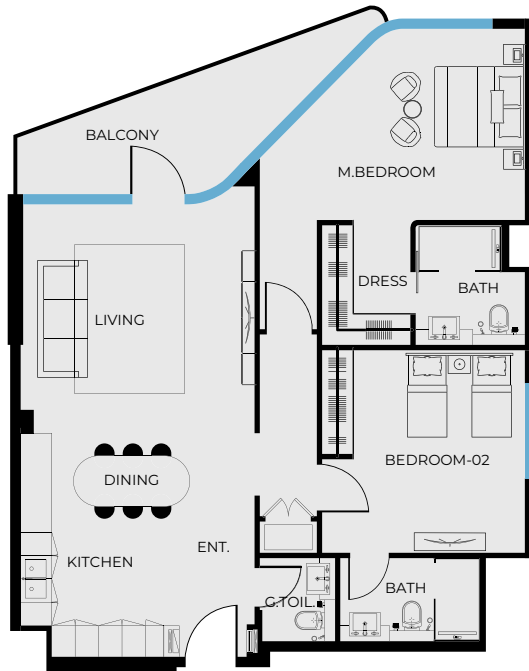
PRESTIGE ONE

# UNIT 201

2 BEDROOM TYPE A

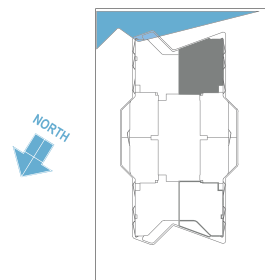
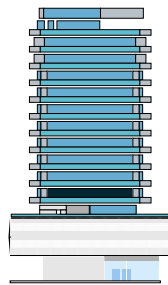
COASTAL  
HAVEN

BY PRESTIGE HARBOUR



## UNIT SIZE

UNIT AREA	1,071.44FT <sup>2</sup>
BALCONY AREA	129.27FT <sup>2</sup>
TOTAL AREA	1,200.71FT <sup>2</sup>



PRESTIGE ONE

All drawings and dimensions are approximate. Drawings are not to scale and are subject to change without notice. The developer reserves the right to make revisions. The units are measured at typical floor in the building and columns may vary in size depending on the floor level. The furnishings and accessories shown are for representation only. The length and width of the Unit and balcony varies depending on which floor and which orientation the unit is located within the building to comply with the building authority regulations. Apartment unit sizes may vary. Actual unit sizes will be reflected on the Sales and Purchase Agreement.



COASTAL  
HAVEN  
BY PRESTIGE HARBOUR

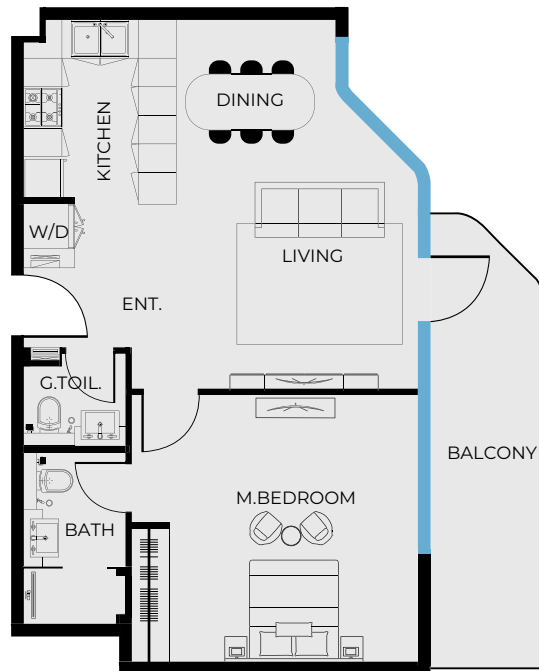
PRESTIGE ONE

COASTAL  
HAVEN

BY PRESTIGE HARBOUR

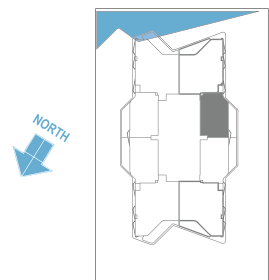
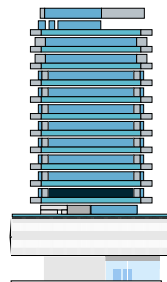
# UNIT 202

1 BEDROOM TYPE A



## UNIT SIZE

UNIT AREA	673.39FT <sup>2</sup>
BALCONY AREA	136.27FT <sup>2</sup>
TOTAL AREA	809.66FT <sup>2</sup>



PRESTIGE ONE

All drawings and dimensions are approximate. Drawings are not to scale and are subject to change without notice. The developer reserves the right to make revisions. The units are measured at typical floor in the building and columns may vary in size depending on the floor level. The furnishings and accessories shown are for representation only. The length and width of the Unit and balcony varies depending on which floor and which orientation the unit is located within the building to comply with the building authority regulations. Apartment unit sizes may vary. Actual unit sizes will be reflected on the Sales and Purchase Agreement.



COASTAL  
HAVEN  
BY PRESTIGE HARBOUR

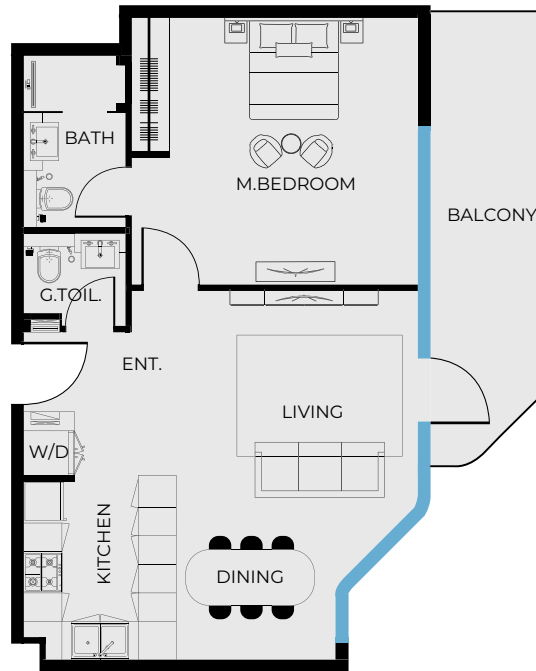
PRESTIGE ONE

# UNIT 203

1 BEDROOM TYPE B

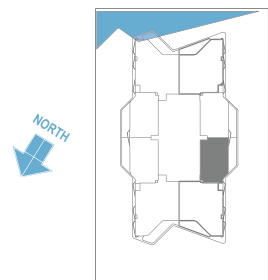
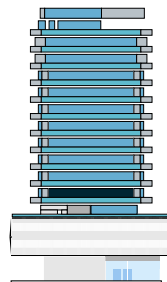
COASTAL  
HAVEN

BY PRESTIGE HARBOUR



## UNIT SIZE

UNIT AREA	673.39FT <sup>2</sup>
BALCONY AREA	136.27FT <sup>2</sup>
TOTAL AREA	809.66FT <sup>2</sup>



PRESTIGE ONE

All drawings and dimensions are approximate. Drawings are not to scale and are subject to change without notice. The developer reserves the right to make revisions. The units are measured at typical floor in the building and columns may vary in size depending on the floor level. The furnishings and accessories shown are for representation only. The length and width of the Unit and balcony varies depending on which floor and which orientation the unit is located within the building to comply with the building authority regulations. Apartment unit sizes may vary. Actual unit sizes will be reflected on the Sales and Purchase Agreement.



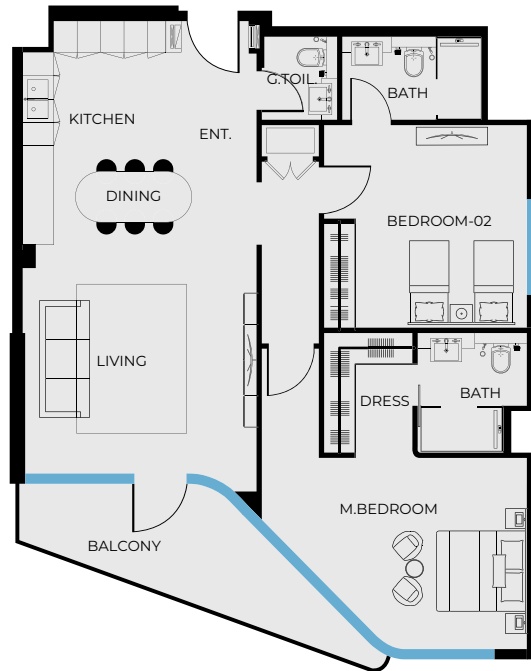
COASTAL  
HAVEN  
BY PRESTIGE HARBOUR

PRESTIGE ONE

COASTAL  
HAVEN  
BY PRESTIGE HARBOUR

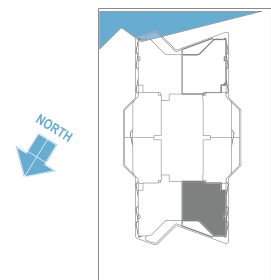
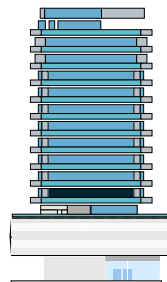
# UNIT 204

2 BEDROOM TYPE A



## UNIT SIZE

UNIT AREA	1,071.44FT <sup>2</sup>
BALCONY AREA	129.27FT <sup>2</sup>
TOTAL AREA	1,200.71FT <sup>2</sup>



PRESTIGE ONE

All drawings and dimensions are approximate. Drawings are not to scale and are subject to change without notice. The developer reserves the right to make revisions. The units are measured at typical floor in the building and columns may vary in size depending on the floor level. The furnishings and accessories shown are for representation only. The length and width of the Unit and balcony varies depending on which floor and which orientation the unit is located within the building to comply with the building authority regulations. Apartment unit sizes may vary. Actual unit sizes will be reflected on the Sales and Purchase Agreement.





COASTAL  
HAVEN  
BY PRESTIGE HARBOUR

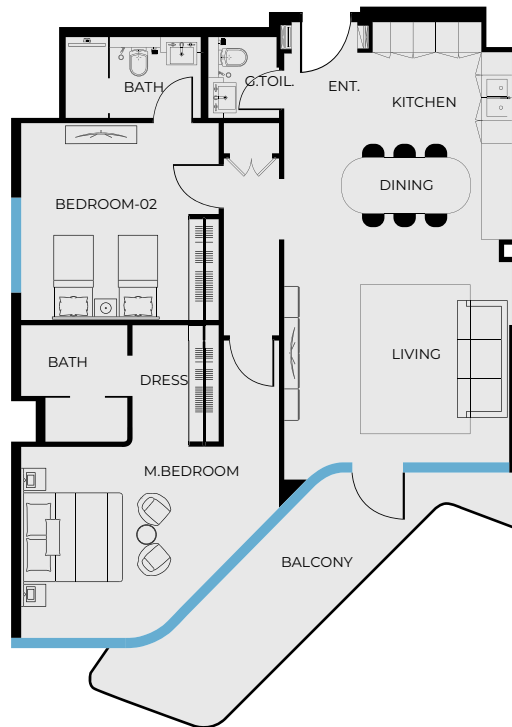
PRESTIGE ONE

# UNIT 205

2 BEDROOM TYPE B

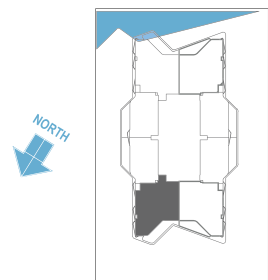
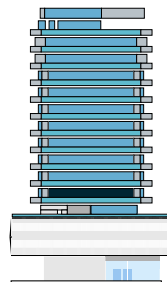
COASTAL  
HAVEN

BY PRESTIGE HARBOUR



## UNIT SIZE

UNIT AREA	1,071.44FT <sup>2</sup>
BALCONY AREA	172.65FT <sup>2</sup>
TOTAL AREA	1,244.09FT <sup>2</sup>



PRESTIGE ONE

All drawings and dimensions are approximate. Drawings are not to scale and are subject to change without notice. The developer reserves the right to make revisions. The units are measured at typical floor in the building and columns may vary in size depending on the floor level. The furnishings and accessories shown are for representation only. The length and width of the Unit and balcony varies depending on which floor and which orientation the unit is located within the building to comply with the building authority regulations. Apartment unit sizes may vary. Actual unit sizes will be reflected on the Sales and Purchase Agreement.



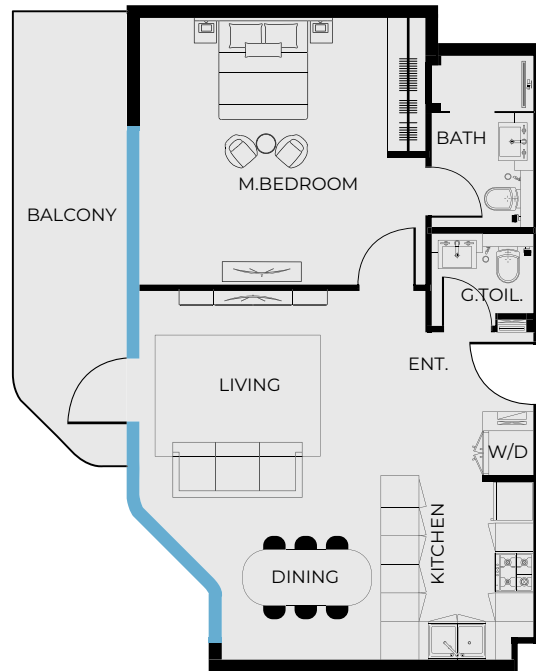
COASTAL  
HAVEN  
BY PRESTIGE HARBOUR

PRESTIGE ONE

COASTAL  
HAVEN  
BY PRESTIGE HARBOUR

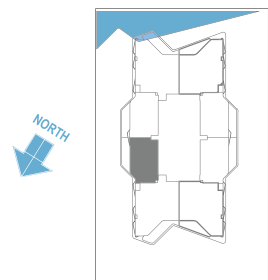
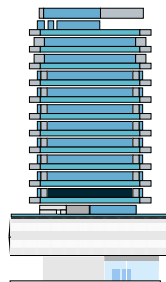
# UNIT 206

1 BEDROOM TYPE B



## UNIT SIZE

UNIT AREA	671.78FT <sup>2</sup>
BALCONY AREA	136.27FT <sup>2</sup>
TOTAL AREA	808.05FT <sup>2</sup>



PRESTIGE ONE

All drawings and dimensions are approximate. Drawings are not to scale and are subject to change without notice. The developer reserves the right to make revisions. The units are measured at typical floor in the building and columns may vary in size depending on the floor level. The furnishings and accessories shown are for representation only. The length and width of the Unit and balcony varies depending on which floor and which orientation the unit is located within the building to comply with the building authority regulations. Apartment unit sizes may vary. Actual unit sizes will be reflected on the Sales and Purchase Agreement.



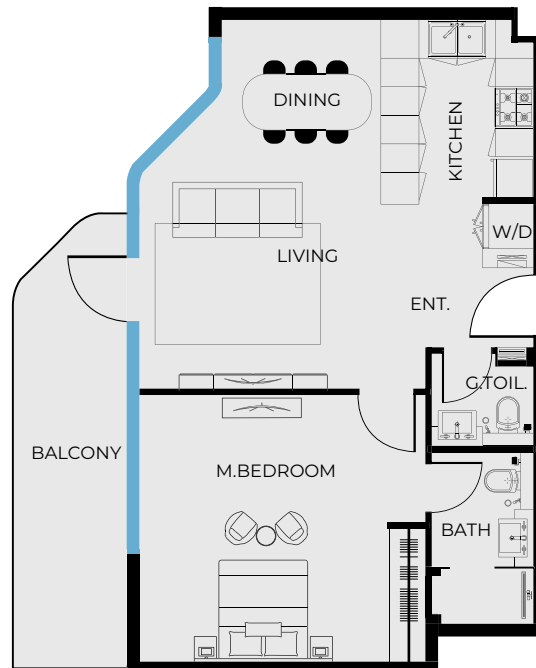
COASTAL  
HAVEN  
BY PRESTIGE HARBOUR

PRESTIGE ONE

COASTAL  
HAVEN  
BY PRESTIGE HARBOUR

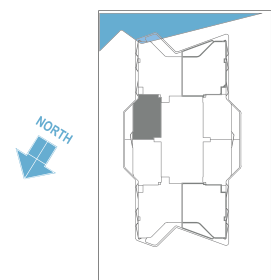
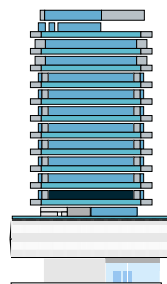
# UNIT 207

1 BEDROOM TYPE A



## UNIT SIZE

UNIT AREA	673.39FT <sup>2</sup>
BALCONY AREA	136.27FT <sup>2</sup>
TOTAL AREA	809.66FT <sup>2</sup>



PRESTIGE ONE

All drawings and dimensions are approximate. Drawings are not to scale and are subject to change without notice. The developer reserves the right to make revisions. The units are measured at typical floor in the building and columns may vary in size depending on the floor level. The furnishings and accessories shown are for representation only. The length and width of the Unit and balcony varies depending on which floor and which orientation the unit is located within the building to comply with the building authority regulations. Apartment unit sizes may vary. Actual unit sizes will be reflected on the Sales and Purchase Agreement.



COASTAL  
HAVEN  
BY PRESTIGE HARBOUR

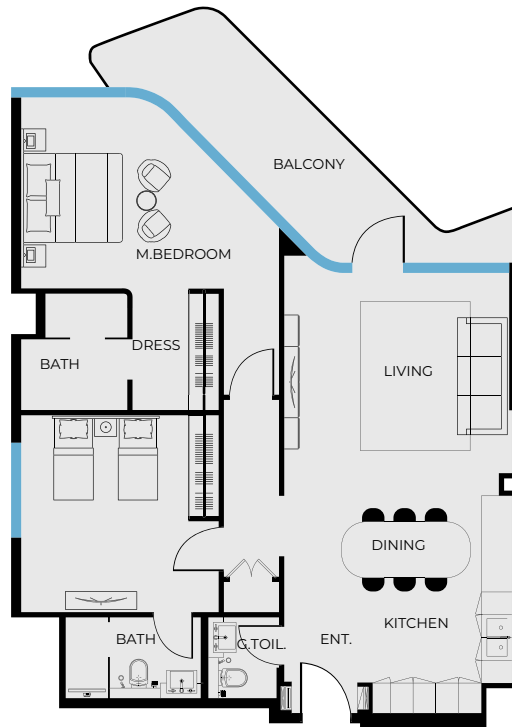
PRESTIGE ONE

# UNIT 208

2 BEDROOM TYPE B

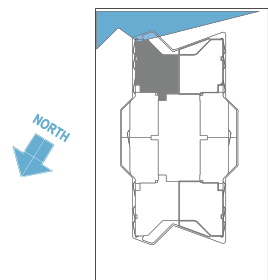
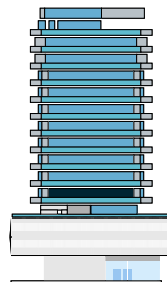
COASTAL  
HAVEN

BY PRESTIGE HARBOUR



## UNIT SIZE

UNIT AREA	1,071.44FT <sup>2</sup>
BALCONY AREA	172.65FT <sup>2</sup>
TOTAL AREA	1,244.09FT <sup>2</sup>



PRESTIGE ONE

All drawings and dimensions are approximate. Drawings are not to scale and are subject to change without notice. The developer reserves the right to make revisions. The units are measured at typical floor in the building and columns may vary in size depending on the floor level. The furnishings and accessories shown are for representation only. The length and width of the Unit and balcony varies depending on which floor and which orientation the unit is located within the building to comply with the building authority regulations. Apartment unit sizes may vary. Actual unit sizes will be reflected on the Sales and Purchase Agreement.



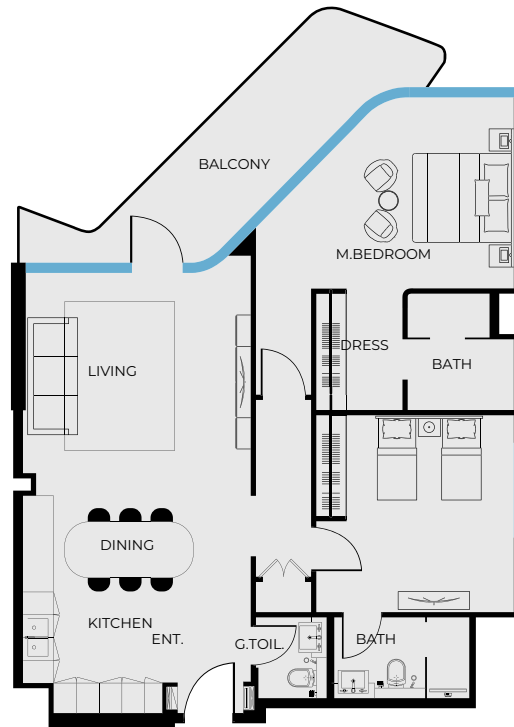
COASTAL  
HAVEN  
BY PRESTIGE HARBOUR

PRESTIGE ONE

COASTAL  
HAVEN  
BY PRESTIGE HARBOUR

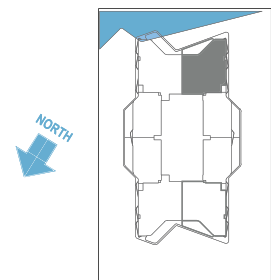
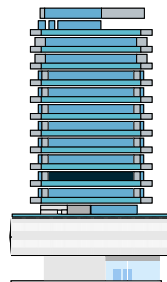
# UNIT 301

2 BEDROOM TYPE B



## UNIT SIZE

UNIT AREA	1,071.65FT <sup>2</sup>
BALCONY AREA	172.22FT <sup>2</sup>
TOTAL AREA	1,243.88FT <sup>2</sup>



PRESTIGE ONE

All drawings and dimensions are approximate. Drawings are not to scale and are subject to change without notice. The developer reserves the right to make revisions. The units are measured at typical floor in the building and columns may vary in size depending on the floor level. The furnishings and accessories shown are for representation only. The length and width of the Unit and balcony varies depending on which floor and which orientation the unit is located within the building to comply with the building authority regulations. Apartment unit sizes may vary. Actual unit sizes will be reflected on the Sales and Purchase Agreement.



COASTAL  
HAVEN  
BY PRESTIGE HARBOUR

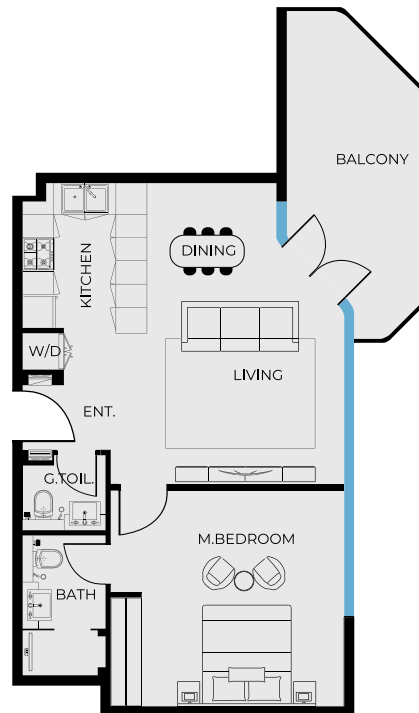
PRESTIGE ONE

# UNIT 302

1 BEDROOM TYPE C

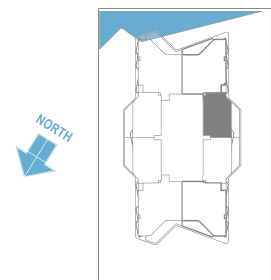
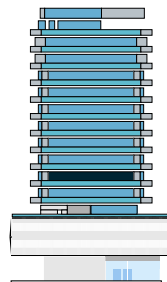
COASTAL  
HAVEN

BY PRESTIGE HARBOUR



## UNIT SIZE

UNIT AREA	673.30FT <sup>2</sup>
BALCONY AREA	156.94FT <sup>2</sup>
TOTAL AREA	830.33FT <sup>2</sup>



PRESTIGE ONE

All drawings and dimensions are approximate. Drawings are not to scale and are subject to change without notice. The developer reserves the right to make revisions. The units are measured at typical floor in the building and columns may vary in size depending on the floor level. The furnishings and accessories shown are for representation only. The length and width of the Unit and balcony varies depending on which floor and which orientation the unit is located within the building to comply with the building authority regulations. Apartment unit sizes may vary. Actual unit sizes will be reflected on the Sales and Purchase Agreement.



COASTAL  
HAVEN  
BY PRESTIGE HARBOUR

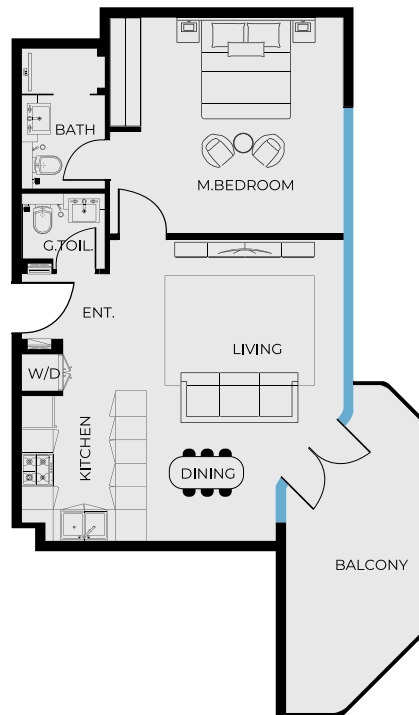
PRESTIGE ONE

# UNIT 303

1 BEDROOM TYPE C

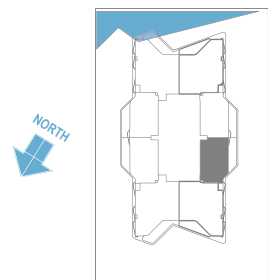
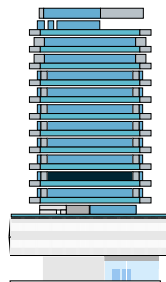
COASTAL  
HAVEN

BY PRESTIGE HARBOUR



## UNIT SIZE

UNIT AREA	673.30FT <sup>2</sup>
BALCONY AREA	156.94FT <sup>2</sup>
TOTAL AREA	830.33FT <sup>2</sup>



PRESTIGE ONE

All drawings and dimensions are approximate. Drawings are not to scale and are subject to change without notice. The developer reserves the right to make revisions. The units are measured at typical floor in the building and columns may vary in size depending on the floor level. The furnishings and accessories shown are for representation only. The length and width of the Unit and balcony varies depending on which floor and which orientation the unit is located within the building to comply with the building authority regulations. Apartment unit sizes may vary. Actual unit sizes will be reflected on the Sales and Purchase Agreement.



COASTAL  
HAVEN  
BY PRESTIGE HARBOUR

PRESTIGE ONE

# UNIT 304

2 BEDROOM TYPE B

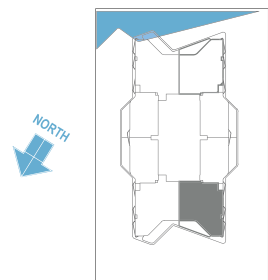
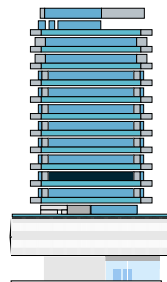
COASTAL  
HAVEN

BY PRESTIGE HARBOUR



## UNIT SIZE

UNIT AREA	1,071.65FT <sup>2</sup>
BALCONY AREA	172.11FT <sup>2</sup>
TOTAL AREA	1,243.77FT <sup>2</sup>



PRESTIGE ONE

All drawings and dimensions are approximate. Drawings are not to scale and are subject to change without notice. The developer reserves the right to make revisions. The units are measured at typical floor in the building and columns may vary in size depending on the floor level. The furnishings and accessories shown are for representation only. The length and width of the Unit and balcony varies depending on which floor and which orientation the unit is located within the building to comply with the building authority regulations. Apartment unit sizes may vary. Actual unit sizes will be reflected on the Sales and Purchase Agreement.





COASTAL  
HAVEN  
BY PRESTIGE HARBOUR

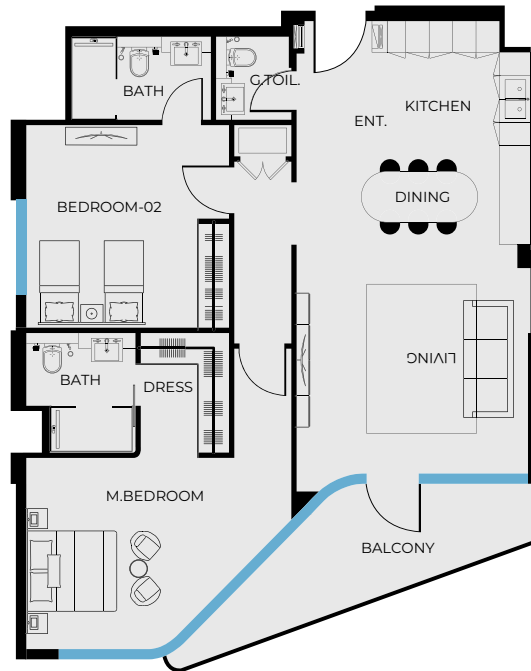
PRESTIGE ONE

# UNIT 305

2 BEDROOM TYPE A

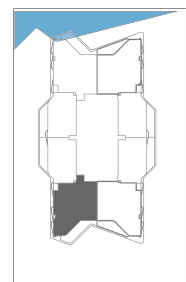
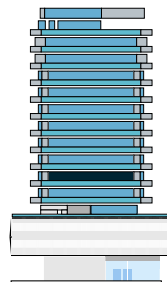
COASTAL  
HAVEN

BY PRESTIGE HARBOUR



## UNIT SIZE

UNIT AREA	1,071.65FT <sup>2</sup>
BALCONY AREA	128.74FT <sup>2</sup>
TOTAL AREA	1,200.39FT <sup>2</sup>



PRESTIGE ONE

All drawings and dimensions are approximate. Drawings are not to scale and are subject to change without notice. The developer reserves the right to make revisions. The units are measured at typical floor in the building and columns may vary in size depending on the floor level. The furnishings and accessories shown are for representation only. The length and width of the Unit and balcony varies depending on which floor and which orientation the unit is located within the building to comply with the building authority regulations. Apartment unit sizes may vary. Actual unit sizes will be reflected on the Sales and Purchase Agreement.



COASTAL  
HAVEN  
BY PRESTIGE HARBOUR

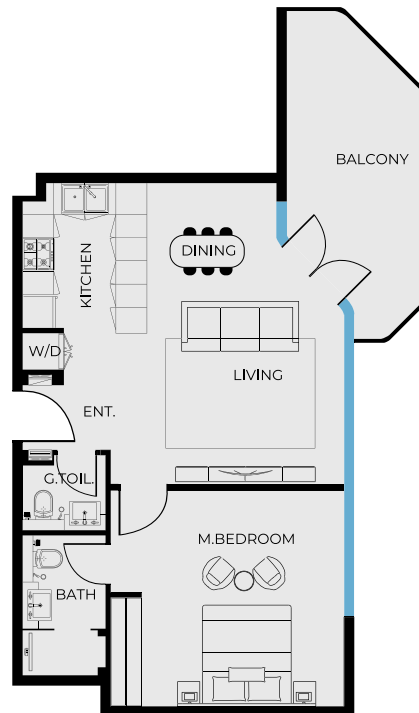
PRESTIGE ONE

# UNIT 306

1 BEDROOM TYPE C

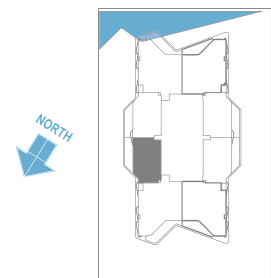
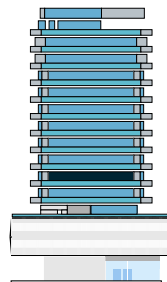
COASTAL  
HAVEN

BY PRESTIGE HARBOUR



## UNIT SIZE

UNIT AREA	671.78FT <sup>2</sup>
BALCONY AREA	156.94FT <sup>2</sup>
TOTAL AREA	828.71FT <sup>2</sup>



PRESTIGE ONE

All drawings and dimensions are approximate. Drawings are not to scale and are subject to change without notice. The developer reserves the right to make revisions. The units are measured at typical floor in the building and columns may vary in size depending on the floor level. The furnishings and accessories shown are for representation only. The length and width of the Unit and balcony varies depending on which floor and which orientation the unit is located within the building to comply with the building authority regulations. Apartment unit sizes may vary. Actual unit sizes will be reflected on the Sales and Purchase Agreement.



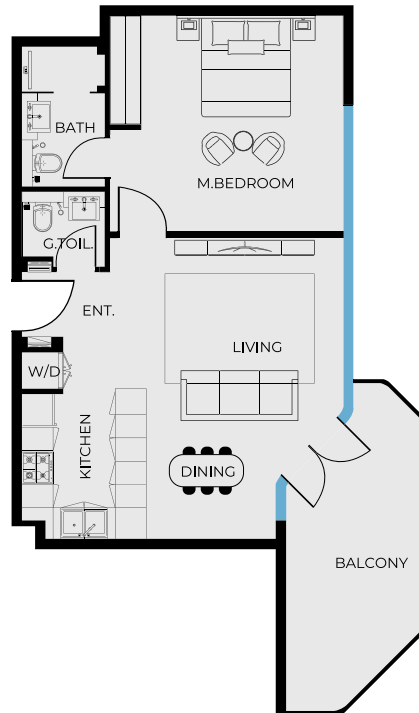
COASTAL  
HAVEN  
BY PRESTIGE HARBOUR

PRESTIGE ONE

COASTAL  
HAVEN  
BY PRESTIGE HARBOUR

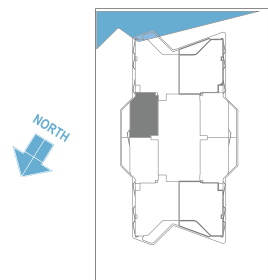
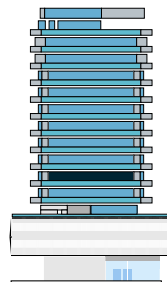
# UNIT 307

1 BEDROOM TYPE C



## UNIT SIZE

UNIT AREA	673.39FT <sup>2</sup>
BALCONY AREA	156.94FT <sup>2</sup>
TOTAL AREA	830.33FT <sup>2</sup>



PRESTIGE ONE

All drawings and dimensions are approximate. Drawings are not to scale and are subject to change without notice. The developer reserves the right to make revisions. The units are measured at typical floor in the building and columns may vary in size depending on the floor level. The furnishings and accessories shown are for representation only. The length and width of the Unit and balcony varies depending on which floor and which orientation the unit is located within the building to comply with the building authority regulations. Apartment unit sizes may vary. Actual unit sizes will be reflected on the Sales and Purchase Agreement.



COASTAL  
HAVEN  
BY PRESTIGE HARBOUR

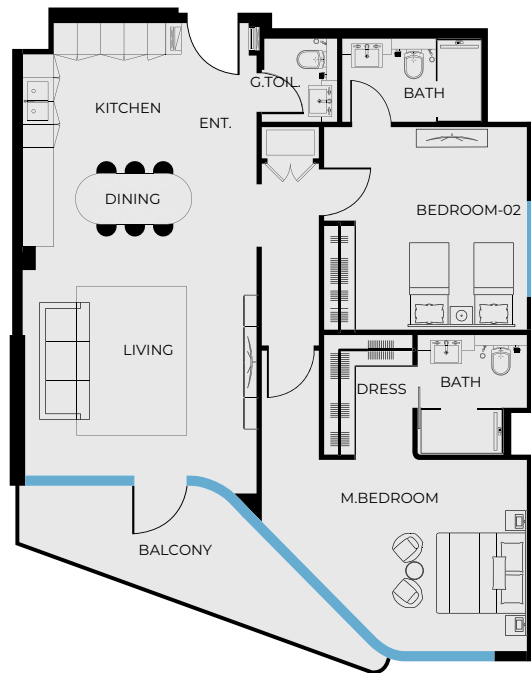
PRESTIGE ONE

# UNIT 308

2 BEDROOM TYPE A

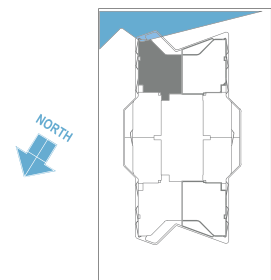
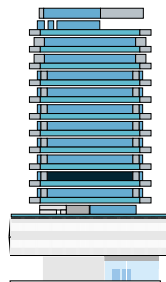
COASTAL  
HAVEN

BY PRESTIGE HARBOUR



## UNIT SIZE

UNIT AREA	1,071.65FT <sup>2</sup>
BALCONY AREA	128.74FT <sup>2</sup>
TOTAL AREA	1,200.39FT <sup>2</sup>



PRESTIGE ONE

All drawings and dimensions are approximate. Drawings are not to scale and are subject to change without notice. The developer reserves the right to make revisions. The units are measured at typical floor in the building and columns may vary in size depending on the floor level. The furnishings and accessories shown are for representation only. The length and width of the Unit and balcony varies depending on which floor and which orientation the unit is located within the building to comply with the building authority regulations. Apartment unit sizes may vary. Actual unit sizes will be reflected on the Sales and Purchase Agreement.



COASTAL  
HAVEN  
BY PRESTIGE HARBOUR

PRESTIGE ONE

# UNIT 401

2 BEDROOM TYPE A

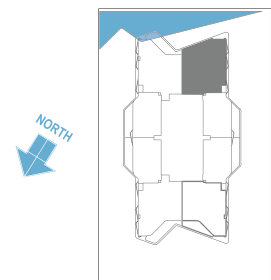
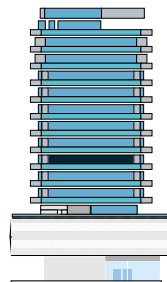
COASTAL  
HAVEN

BY PRESTIGE HARBOUR



## UNIT SIZE

UNIT AREA	1,071.44FT <sup>2</sup>
BALCONY AREA	129.27FT <sup>2</sup>
TOTAL AREA	1,200.71FT <sup>2</sup>



PRESTIGE ONE

All drawings and dimensions are approximate. Drawings are not to scale and are subject to change without notice. The developer reserves the right to make revisions. The units are measured at typical floor in the building and columns may vary in size depending on the floor level. The furnishings and accessories shown are for representation only. The length and width of the Unit and balcony varies depending on which floor and which orientation the unit is located within the building to comply with the building authority regulations. Apartment unit sizes may vary. Actual unit sizes will be reflected on the Sales and Purchase Agreement.



COASTAL  
HAVEN  
BY PRESTIGE HARBOUR

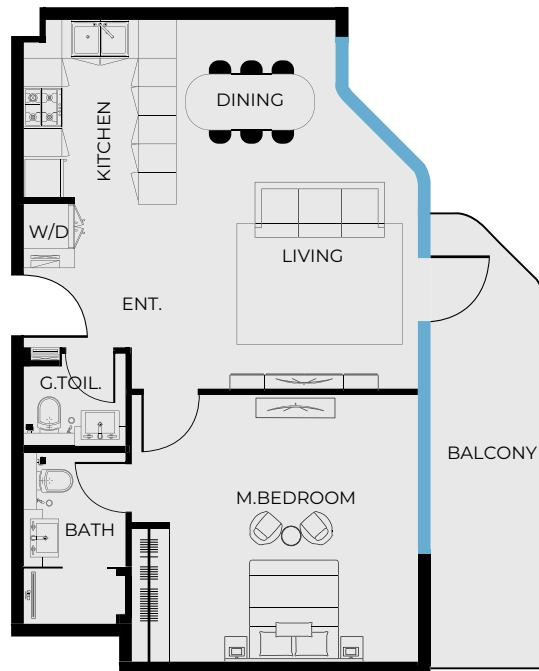
PRESTIGE ONE

# UNIT 402

1 BEDROOM TYPE A

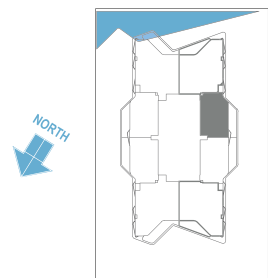
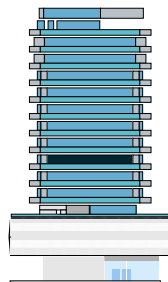
COASTAL  
HAVEN

BY PRESTIGE HARBOUR



## UNIT SIZE

UNIT AREA	673.39FT <sup>2</sup>
BALCONY AREA	136.27FT <sup>2</sup>
TOTAL AREA	809.66FT <sup>2</sup>



PRESTIGE ONE

All drawings and dimensions are approximate. Drawings are not to scale and are subject to change without notice. The developer reserves the right to make revisions. The units are measured at typical floor in the building and columns may vary in size depending on the floor level. The furnishings and accessories shown are for representation only. The length and width of the Unit and balcony varies depending on which floor and which orientation the unit is located within the building to comply with the building authority regulations. Apartment unit sizes may vary. Actual unit sizes will be reflected on the Sales and Purchase Agreement.



COASTAL  
HAVEN  
BY PRESTIGE HARBOUR

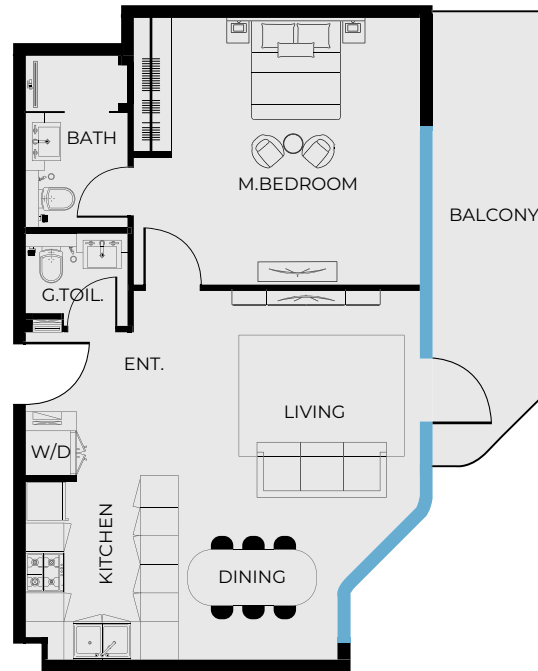
PRESTIGE ONE

COASTAL  
HAVEN

BY PRESTIGE HARBOUR

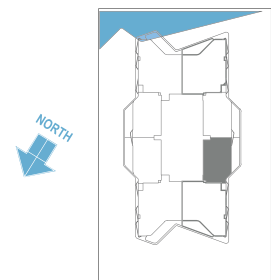
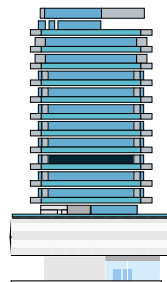
# UNIT 403

1 BEDROOM TYPE B



## UNIT SIZE

UNIT AREA	673.39FT <sup>2</sup>
BALCONY AREA	136.27FT <sup>2</sup>
TOTAL AREA	809.66FT <sup>2</sup>



PRESTIGE ONE

All drawings and dimensions are approximate. Drawings are not to scale and are subject to change without notice. The developer reserves the right to make revisions. The units are measured at typical floor in the building and columns may vary in size depending on the floor level. The furnishings and accessories shown are for representation only. The length and width of the Unit and balcony varies depending on which floor and which orientation the unit is located within the building to comply with the building authority regulations. Apartment unit sizes may vary. Actual unit sizes will be reflected on the Sales and Purchase Agreement.



COASTAL  
HAVEN  
BY PRESTIGE HARBOUR

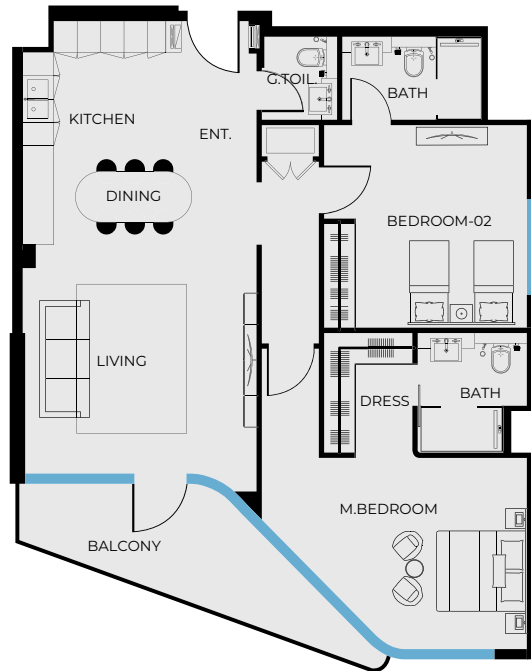
PRESTIGE ONE

# UNIT 404

2 BEDROOM TYPE A

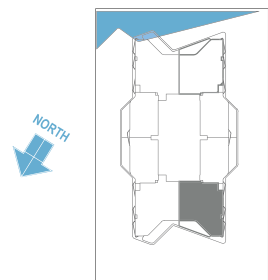
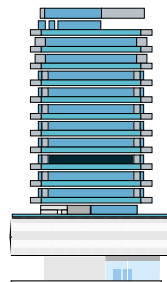
COASTAL  
HAVEN

BY PRESTIGE HARBOUR



## UNIT SIZE

UNIT AREA	1,071.44FT <sup>2</sup>
BALCONY AREA	129.27FT <sup>2</sup>
TOTAL AREA	1,200.71FT <sup>2</sup>



PRESTIGE ONE

All drawings and dimensions are approximate. Drawings are not to scale and are subject to change without notice. The developer reserves the right to make revisions. The units are measured at typical floor in the building and columns may vary in size depending on the floor level. The furnishings and accessories shown are for representation only. The length and width of the Unit and balcony varies depending on which floor and which orientation the unit is located within the building to comply with the building authority regulations. Apartment unit sizes may vary. Actual unit sizes will be reflected on the Sales and Purchase Agreement.





COASTAL  
HAVEN  
BY PRESTIGE HARBOUR

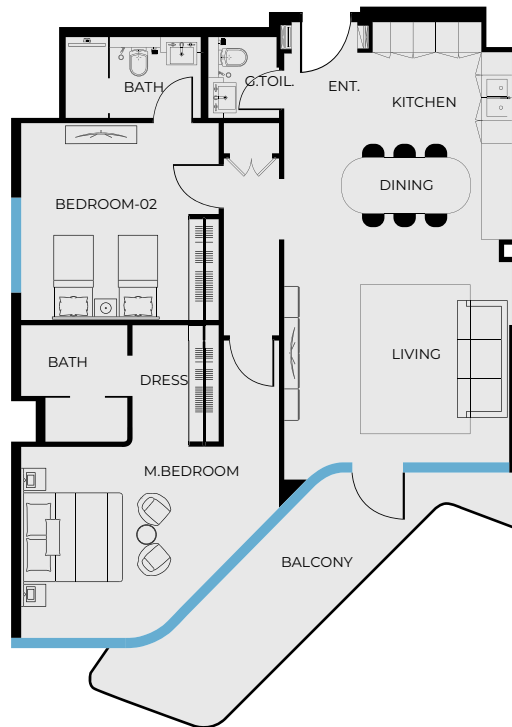
PRESTIGE ONE

# UNIT 405

2 BEDROOM TYPE B

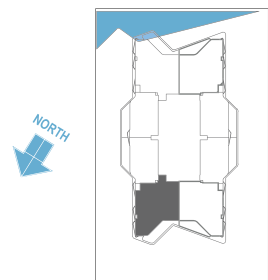
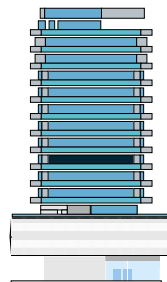
COASTAL  
HAVEN

BY PRESTIGE HARBOUR



## UNIT SIZE

UNIT AREA	1,071.44FT <sup>2</sup>
BALCONY AREA	172.65FT <sup>2</sup>
TOTAL AREA	1,244.09FT <sup>2</sup>



PRESTIGE ONE

All drawings and dimensions are approximate. Drawings are not to scale and are subject to change without notice. The developer reserves the right to make revisions. The units are measured at typical floor in the building and columns may vary in size depending on the floor level. The furnishings and accessories shown are for representation only. The length and width of the Unit and balcony varies depending on which floor and which orientation the unit is located within the building to comply with the building authority regulations. Apartment unit sizes may vary. Actual unit sizes will be reflected on the Sales and Purchase Agreement.



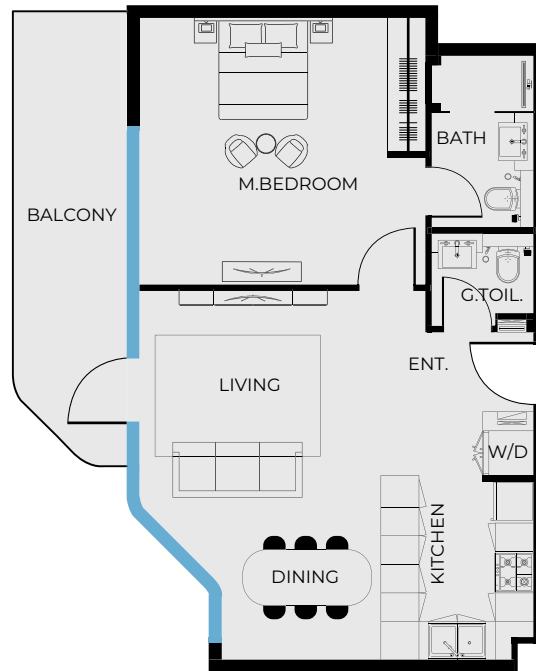
COASTAL  
HAVEN  
BY PRESTIGE HARBOUR

PRESTIGE ONE

COASTAL  
HAVEN  
BY PRESTIGE HARBOUR

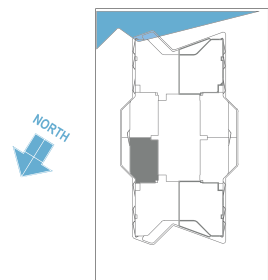
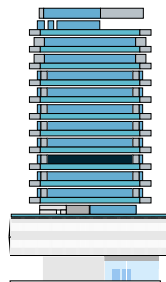
# UNIT 406

1 BEDROOM TYPE B



## UNIT SIZE

UNIT AREA	671.78FT <sup>2</sup>
BALCONY AREA	136.27FT <sup>2</sup>
TOTAL AREA	808.05FT <sup>2</sup>



PRESTIGE ONE

All drawings and dimensions are approximate. Drawings are not to scale and are subject to change without notice. The developer reserves the right to make revisions. The units are measured at typical floor in the building and columns may vary in size depending on the floor level. The furnishings and accessories shown are for representation only. The length and width of the Unit and balcony varies depending on which floor and which orientation the unit is located within the building to comply with the building authority regulations. Apartment unit sizes may vary. Actual unit sizes will be reflected on the Sales and Purchase Agreement.



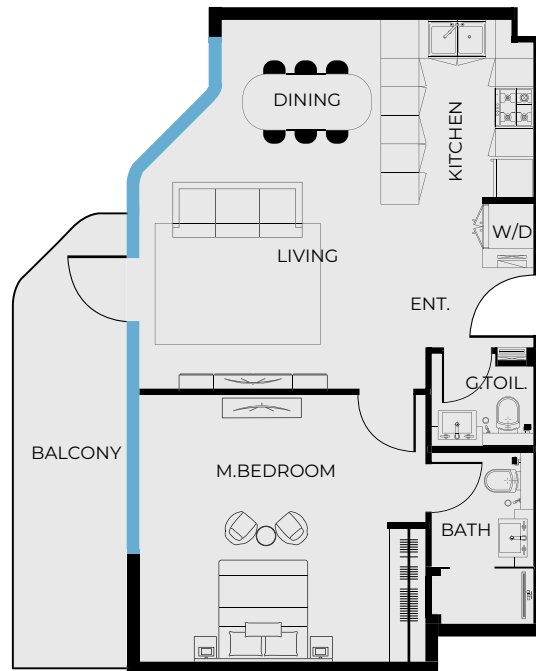
COASTAL  
HAVEN  
BY PRESTIGE HARBOUR

PRESTIGE ONE

COASTAL  
HAVEN  
BY PRESTIGE HARBOUR

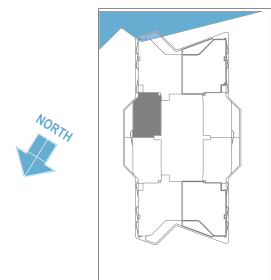
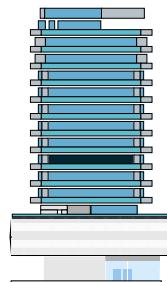
# UNIT 407

1 BEDROOM TYPE A



## UNIT SIZE

UNIT AREA	673.39FT <sup>2</sup>
BALCONY AREA	136.27FT <sup>2</sup>
TOTAL AREA	809.66FT <sup>2</sup>



PRESTIGE ONE

All drawings and dimensions are approximate. Drawings are not to scale and are subject to change without notice. The developer reserves the right to make revisions. The units are measured at typical floor in the building and columns may vary in size depending on the floor level. The furnishings and accessories shown are for representation only. The length and width of the Unit and balcony varies depending on which floor and which orientation the unit is located within the building to comply with the building authority regulations. Apartment unit sizes may vary. Actual unit sizes will be reflected on the Sales and Purchase Agreement.



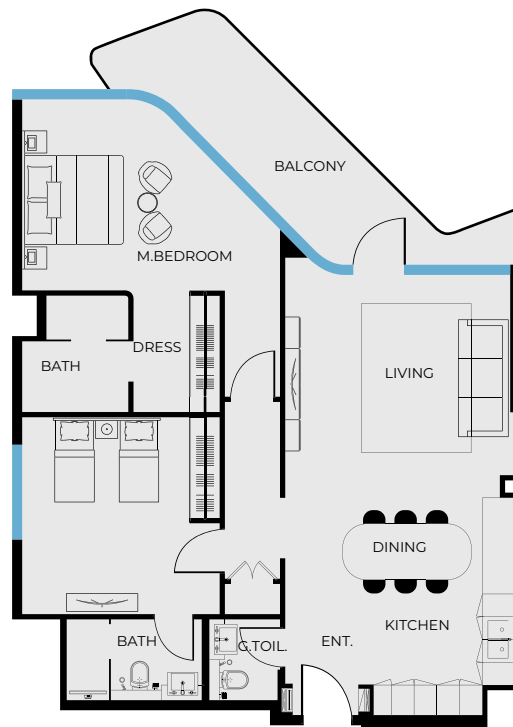
COASTAL  
HAVEN  
BY PRESTIGE HARBOUR

PRESTIGE ONE

COASTAL  
HAVEN  
BY PRESTIGE HARBOUR

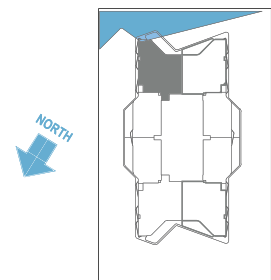
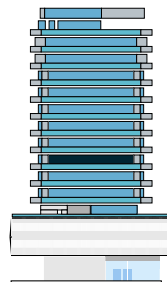
# UNIT 408

2 BEDROOM TYPE B



## UNIT SIZE

UNIT AREA	1,071.44FT <sup>2</sup>
BALCONY AREA	172.65FT <sup>2</sup>
TOTAL AREA	1,244.09FT <sup>2</sup>



PRESTIGE ONE

All drawings and dimensions are approximate. Drawings are not to scale and are subject to change without notice. The developer reserves the right to make revisions. The units are measured at typical floor in the building and columns may vary in size depending on the floor level. The furnishings and accessories shown are for representation only. The length and width of the Unit and balcony varies depending on which floor and which orientation the unit is located within the building to comply with the building authority regulations. Apartment unit sizes may vary. Actual unit sizes will be reflected on the Sales and Purchase Agreement.



COASTAL  
HAVEN  
BY PRESTIGE HARBOUR

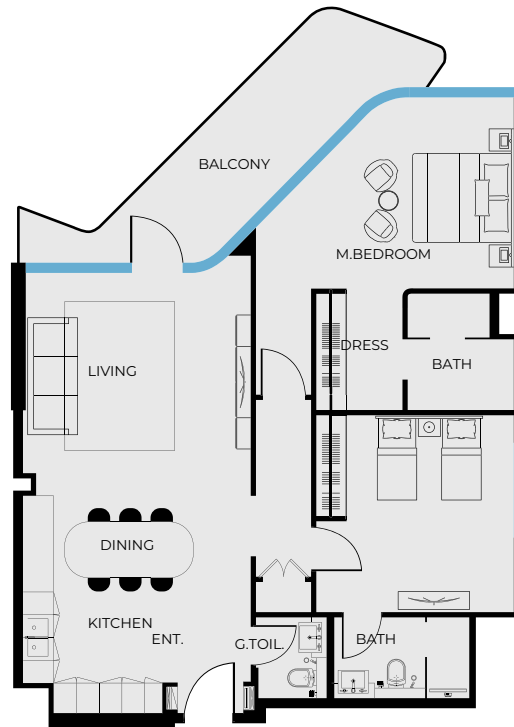
PRESTIGE ONE

# UNIT 501

2 BEDROOM TYPE B

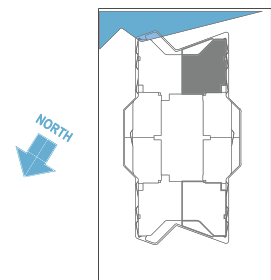
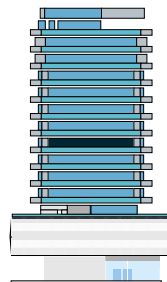
COASTAL  
HAVEN

BY PRESTIGE HARBOUR



## UNIT SIZE

UNIT AREA	1,071.65FT <sup>2</sup>
BALCONY AREA	172.22FT <sup>2</sup>
TOTAL AREA	1,243.88FT <sup>2</sup>



PRESTIGE ONE

All drawings and dimensions are approximate. Drawings are not to scale and are subject to change without notice. The developer reserves the right to make revisions. The units are measured at typical floor in the building and columns may vary in size depending on the floor level. The furnishings and accessories shown are for representation only. The length and width of the Unit and balcony varies depending on which floor and which orientation the unit is located within the building to comply with the building authority regulations. Apartment unit sizes may vary. Actual unit sizes will be reflected on the Sales and Purchase Agreement.



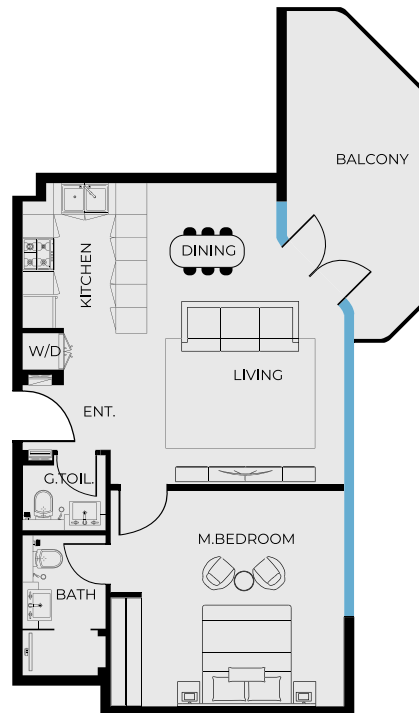
COASTAL  
HAVEN  
BY PRESTIGE HARBOUR

PRESTIGE ONE

COASTAL  
HAVEN  
BY PRESTIGE HARBOUR

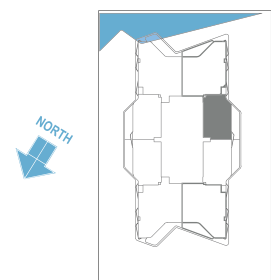
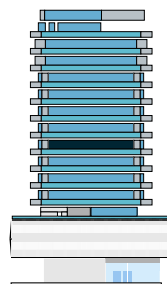
# UNIT 502

1 BEDROOM TYPE C



## UNIT SIZE

UNIT AREA	673.30FT <sup>2</sup>
BALCONY AREA	156.94FT <sup>2</sup>
TOTAL AREA	830.33FT <sup>2</sup>



PRESTIGE ONE

All drawings and dimensions are approximate. Drawings are not to scale and are subject to change without notice. The developer reserves the right to make revisions. The units are measured at typical floor in the building and columns may vary in size depending on the floor level. The furnishings and accessories shown are for representation only. The length and width of the Unit and balcony varies depending on which floor and which orientation the unit is located within the building to comply with the building authority regulations. Apartment unit sizes may vary. Actual unit sizes will be reflected on the Sales and Purchase Agreement.



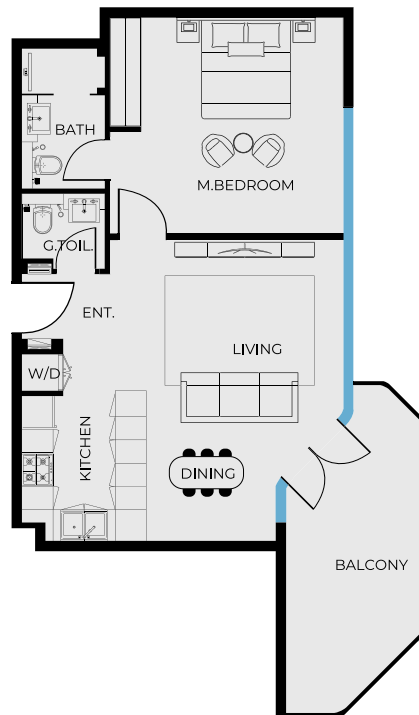
COASTAL  
HAVEN  
BY PRESTIGE HARBOUR

PRESTIGE ONE

COASTAL  
HAVEN  
BY PRESTIGE HARBOUR

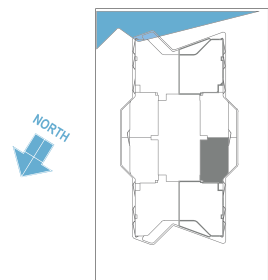
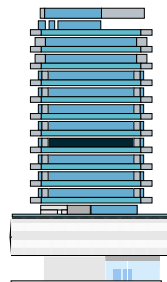
# UNIT 503

1 BEDROOM TYPE C



## UNIT SIZE

UNIT AREA	673.30FT <sup>2</sup>
BALCONY AREA	156.94FT <sup>2</sup>
TOTAL AREA	830.33FT <sup>2</sup>



PRESTIGE ONE

All drawings and dimensions are approximate. Drawings are not to scale and are subject to change without notice. The developer reserves the right to make revisions. The units are measured at typical floor in the building and columns may vary in size depending on the floor level. The furnishings and accessories shown are for representation only. The length and width of the Unit and balcony varies depending on which floor and which orientation the unit is located within the building to comply with the building authority regulations. Apartment unit sizes may vary. Actual unit sizes will be reflected on the Sales and Purchase Agreement.



COASTAL  
HAVEN  
BY PRESTIGE HARBOUR

PRESTIGE ONE

# UNIT 504

2 BEDROOM TYPE B

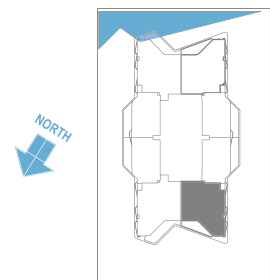
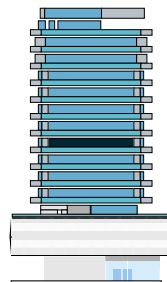
COASTAL  
HAVEN

BY PRESTIGE HARBOUR



## UNIT SIZE

UNIT AREA	1,071.65FT <sup>2</sup>
BALCONY AREA	172.11FT <sup>2</sup>
TOTAL AREA	1,243.77FT <sup>2</sup>



PRESTIGE ONE

All drawings and dimensions are approximate. Drawings are not to scale and are subject to change without notice. The developer reserves the right to make revisions. The units are measured at typical floor in the building and columns may vary in size depending on the floor level. The furnishings and accessories shown are for representation only. The length and width of the Unit and balcony varies depending on which floor and which orientation the unit is located within the building to comply with the building authority regulations. Apartment unit sizes may vary. Actual unit sizes will be reflected on the Sales and Purchase Agreement.





COASTAL  
HAVEN  
BY PRESTIGE HARBOUR

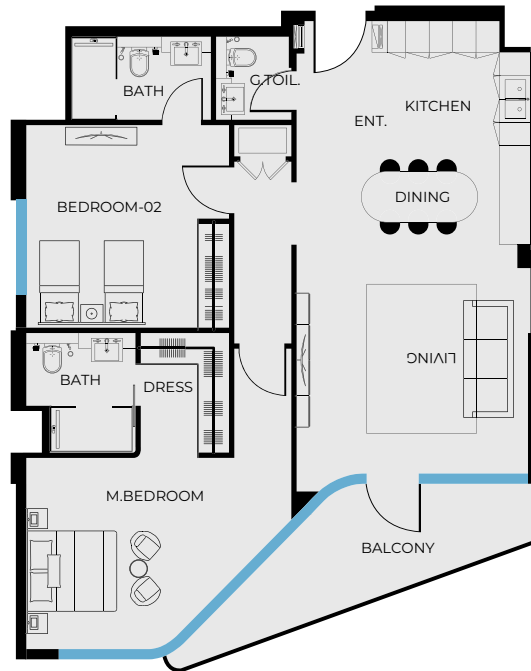
PRESTIGE ONE

# UNIT 505

2 BEDROOM TYPE A

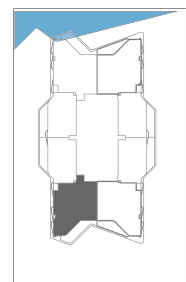
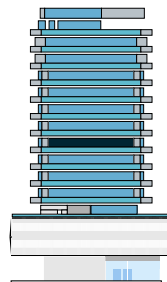
COASTAL  
HAVEN

BY PRESTIGE HARBOUR



## UNIT SIZE

UNIT AREA	1,071.65FT <sup>2</sup>
BALCONY AREA	128.74FT <sup>2</sup>
TOTAL AREA	1,200.39FT <sup>2</sup>



PRESTIGE ONE

All drawings and dimensions are approximate. Drawings are not to scale and are subject to change without notice. The developer reserves the right to make revisions. The units are measured at typical floor in the building and columns may vary in size depending on the floor level. The furnishings and accessories shown are for representation only. The length and width of the Unit and balcony varies depending on which floor and which orientation the unit is located within the building to comply with the building authority regulations. Apartment unit sizes may vary. Actual unit sizes will be reflected on the Sales and Purchase Agreement.



COASTAL  
HAVEN  
BY PRESTIGE HARBOUR

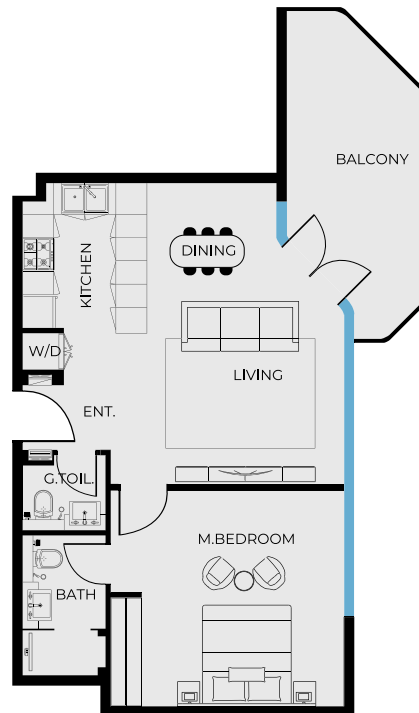
PRESTIGE ONE

# UNIT 506

1 BEDROOM TYPE C

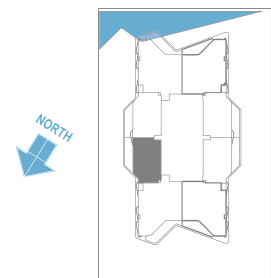
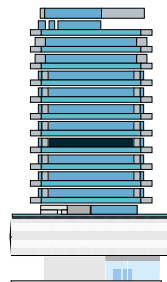
COASTAL  
HAVEN

BY PRESTIGE HARBOUR



## UNIT SIZE

UNIT AREA	671.78FT <sup>2</sup>
BALCONY AREA	156.94FT <sup>2</sup>
TOTAL AREA	828.71FT <sup>2</sup>



PRESTIGE ONE

All drawings and dimensions are approximate. Drawings are not to scale and are subject to change without notice. The developer reserves the right to make revisions. The units are measured at typical floor in the building and columns may vary in size depending on the floor level. The furnishings and accessories shown are for representation only. The length and width of the Unit and balcony varies depending on which floor and which orientation the unit is located within the building to comply with the building authority regulations. Apartment unit sizes may vary. Actual unit sizes will be reflected on the Sales and Purchase Agreement.



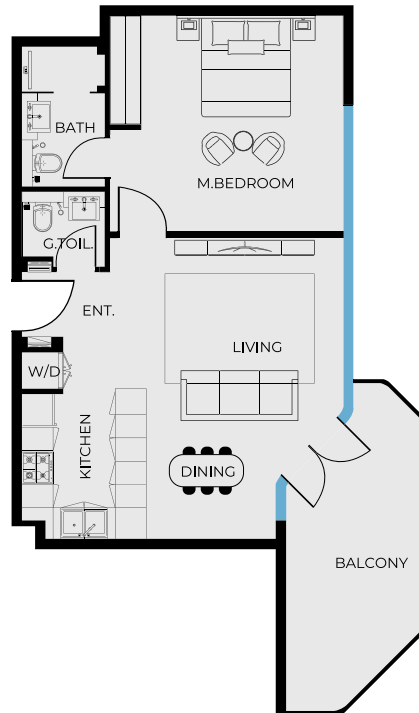
COASTAL  
HAVEN  
BY PRESTIGE HARBOUR

PRESTIGE ONE

COASTAL  
HAVEN  
BY PRESTIGE HARBOUR

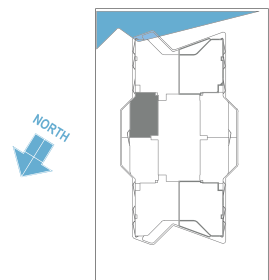
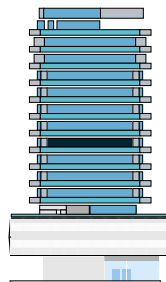
# UNIT 507

1 BEDROOM TYPE C



## UNIT SIZE

UNIT AREA	673.39FT <sup>2</sup>
BALCONY AREA	156.94FT <sup>2</sup>
TOTAL AREA	830.33FT <sup>2</sup>



PRESTIGE ONE

All drawings and dimensions are approximate. Drawings are not to scale and are subject to change without notice. The developer reserves the right to make revisions. The units are measured at typical floor in the building and columns may vary in size depending on the floor level. The furnishings and accessories shown are for representation only. The length and width of the Unit and balcony varies depending on which floor and which orientation the unit is located within the building to comply with the building authority regulations. Apartment unit sizes may vary. Actual unit sizes will be reflected on the Sales and Purchase Agreement.



COASTAL  
HAVEN  
BY PRESTIGE HARBOUR

PRESTIGE ONE

# UNIT 508

2 BEDROOM TYPE A

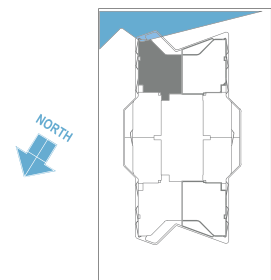
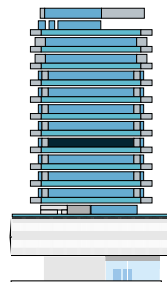
COASTAL  
HAVEN

BY PRESTIGE HARBOUR



## UNIT SIZE

UNIT AREA	1,071.65FT <sup>2</sup>
BALCONY AREA	128.74FT <sup>2</sup>
TOTAL AREA	1,200.39FT <sup>2</sup>



PRESTIGE ONE

All drawings and dimensions are approximate. Drawings are not to scale and are subject to change without notice. The developer reserves the right to make revisions. The units are measured at typical floor in the building and columns may vary in size depending on the floor level. The furnishings and accessories shown are for representation only. The length and width of the Unit and balcony varies depending on which floor and which orientation the unit is located within the building to comply with the building authority regulations. Apartment unit sizes may vary. Actual unit sizes will be reflected on the Sales and Purchase Agreement.



COASTAL  
HAVEN  
BY PRESTIGE HARBOUR

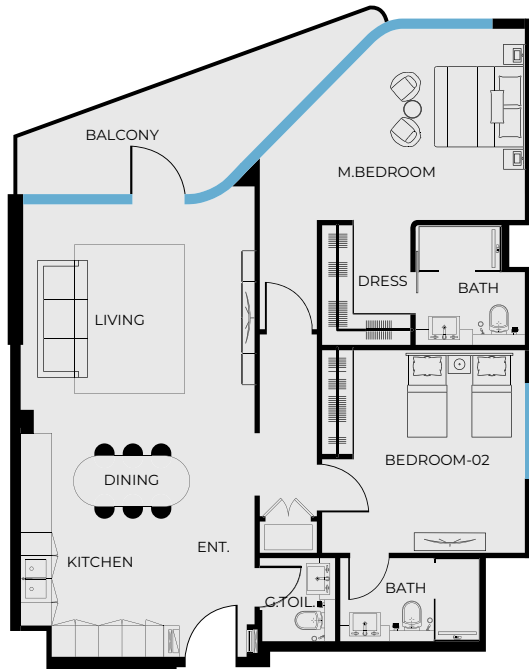
PRESTIGE ONE

# UNIT 601

2 BEDROOM TYPE A

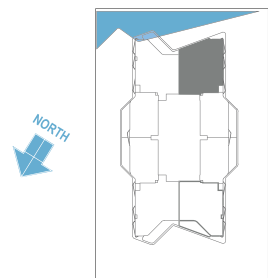
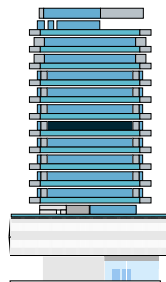
COASTAL  
HAVEN

BY PRESTIGE HARBOUR



## UNIT SIZE

UNIT AREA	1,071.44FT <sup>2</sup>
BALCONY AREA	129.27FT <sup>2</sup>
TOTAL AREA	1,200.71FT <sup>2</sup>



PRESTIGE ONE

All drawings and dimensions are approximate. Drawings are not to scale and are subject to change without notice. The developer reserves the right to make revisions. The units are measured at typical floor in the building and columns may vary in size depending on the floor level. The furnishings and accessories shown are for representation only. The length and width of the Unit and balcony varies depending on which floor and which orientation the unit is located within the building to comply with the building authority regulations. Apartment unit sizes may vary. Actual unit sizes will be reflected on the Sales and Purchase Agreement.



COASTAL  
HAVEN  
BY PRESTIGE HARBOUR

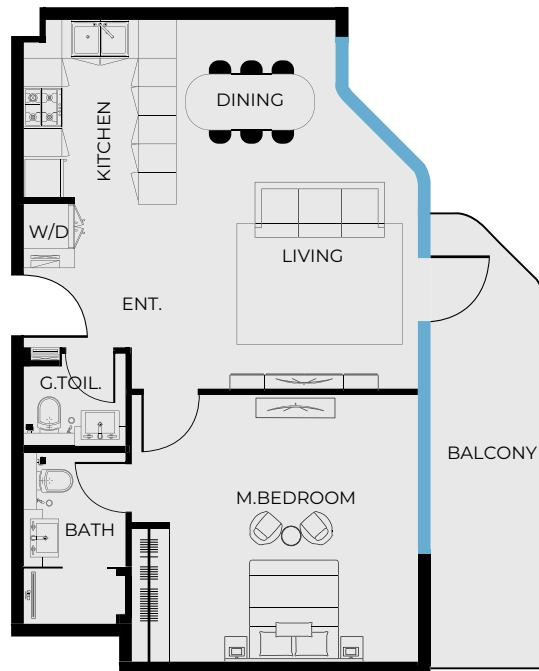
PRESTIGE ONE

COASTAL  
HAVEN

BY PRESTIGE HARBOUR

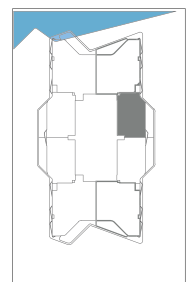
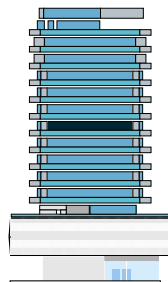
# UNIT 602

1 BEDROOM TYPE A



## UNIT SIZE

UNIT AREA	673.39FT <sup>2</sup>
BALCONY AREA	136.27FT <sup>2</sup>
TOTAL AREA	809.66FT <sup>2</sup>



PRESTIGE ONE

All drawings and dimensions are approximate. Drawings are not to scale and are subject to change without notice. The developer reserves the right to make revisions. The units are measured at typical floor in the building and columns may vary in size depending on the floor level. The furnishings and accessories shown are for representation only. The length and width of the Unit and balcony varies depending on which floor and which orientation the unit is located within the building to comply with the building authority regulations. Apartment unit sizes may vary. Actual unit sizes will be reflected on the Sales and Purchase Agreement.



COASTAL  
HAVEN  
BY PRESTIGE HARBOUR

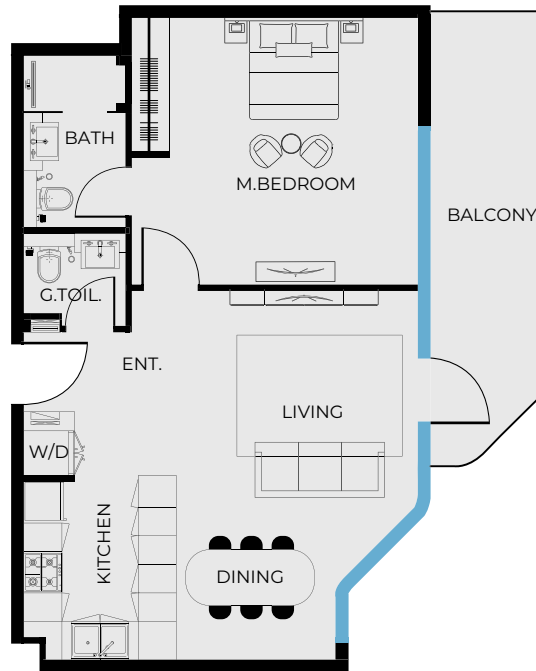
PRESTIGE ONE

COASTAL  
HAVEN

BY PRESTIGE HARBOUR

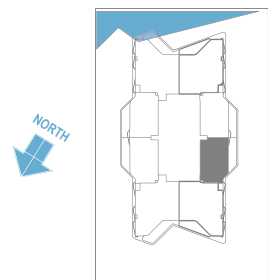
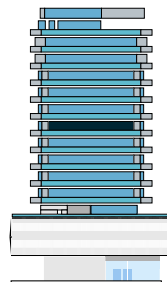
# UNIT 603

1 BEDROOM TYPE B



## UNIT SIZE

UNIT AREA	673.39FT <sup>2</sup>
BALCONY AREA	136.27FT <sup>2</sup>
TOTAL AREA	809.66FT <sup>2</sup>



PRESTIGE ONE

All drawings and dimensions are approximate. Drawings are not to scale and are subject to change without notice. The developer reserves the right to make revisions. The units are measured at typical floor in the building and columns may vary in size depending on the floor level. The furnishings and accessories shown are for representation only. The length and width of the Unit and balcony varies depending on which floor and which orientation the unit is located within the building to comply with the building authority regulations. Apartment unit sizes may vary. Actual unit sizes will be reflected on the Sales and Purchase Agreement.



COASTAL  
HAVEN  
BY PRESTIGE HARBOUR

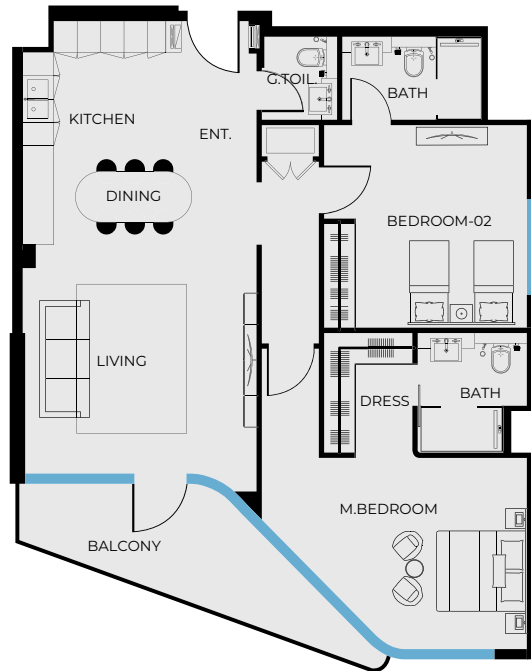
PRESTIGE ONE

# UNIT 604

2 BEDROOM TYPE A

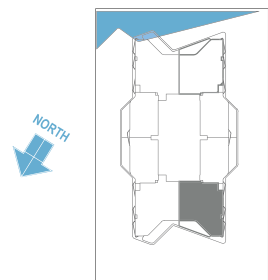
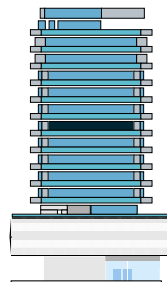
COASTAL  
HAVEN

BY PRESTIGE HARBOUR



## UNIT SIZE

UNIT AREA	1,071.44FT <sup>2</sup>
BALCONY AREA	129.27FT <sup>2</sup>
TOTAL AREA	1,200.71FT <sup>2</sup>



PRESTIGE ONE

All drawings and dimensions are approximate. Drawings are not to scale and are subject to change without notice. The developer reserves the right to make revisions. The units are measured at typical floor in the building and columns may vary in size depending on the floor level. The furnishings and accessories shown are for representation only. The length and width of the Unit and balcony varies depending on which floor and which orientation the unit is located within the building to comply with the building authority regulations. Apartment unit sizes may vary. Actual unit sizes will be reflected on the Sales and Purchase Agreement.





COASTAL  
HAVEN  
BY PRESTIGE HARBOUR

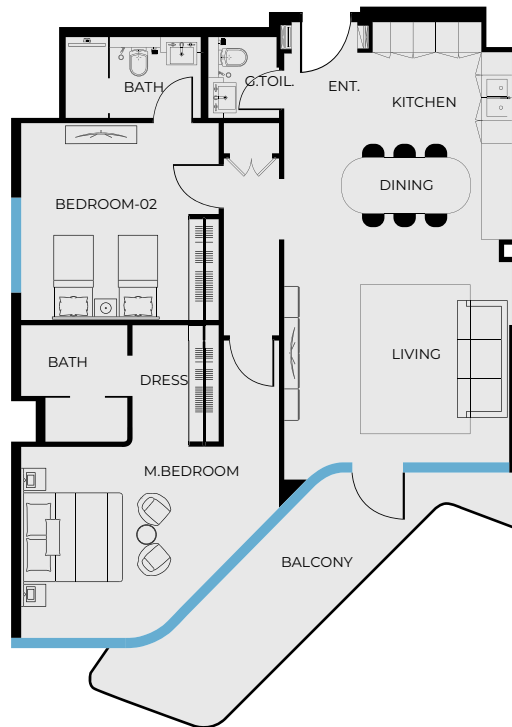
PRESTIGE ONE

# UNIT 605

2 BEDROOM TYPE B

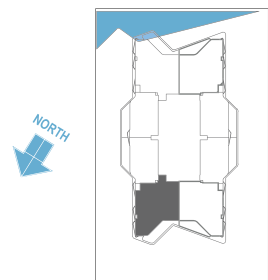
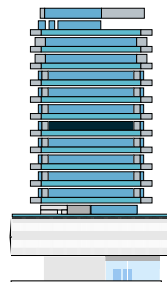
COASTAL  
HAVEN

BY PRESTIGE HARBOUR



## UNIT SIZE

UNIT AREA	1,071.44FT <sup>2</sup>
BALCONY AREA	172.65FT <sup>2</sup>
TOTAL AREA	1,244.09FT <sup>2</sup>



PRESTIGE ONE

All drawings and dimensions are approximate. Drawings are not to scale and are subject to change without notice. The developer reserves the right to make revisions. The units are measured at typical floor in the building and columns may vary in size depending on the floor level. The furnishings and accessories shown are for representation only. The length and width of the Unit and balcony varies depending on which floor and which orientation the unit is located within the building to comply with the building authority regulations. Apartment unit sizes may vary. Actual unit sizes will be reflected on the Sales and Purchase Agreement.



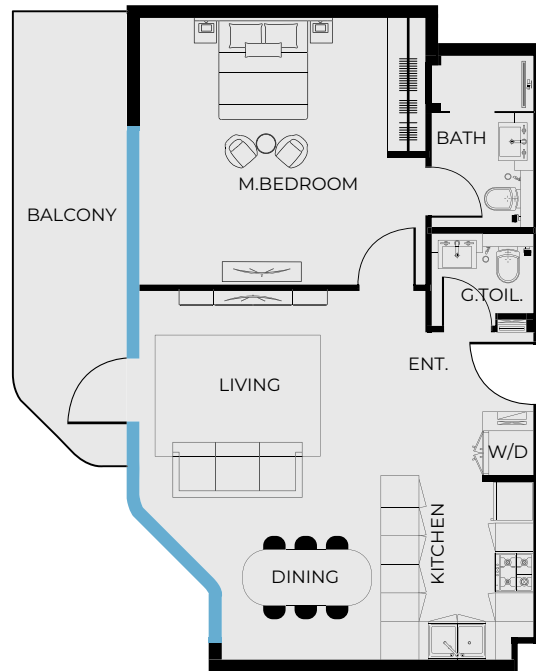
COASTAL  
HAVEN  
BY PRESTIGE HARBOUR

PRESTIGE ONE

COASTAL  
HAVEN  
BY PRESTIGE HARBOUR

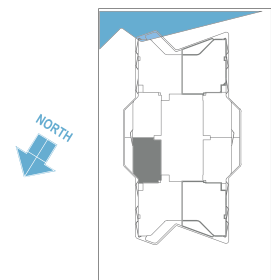
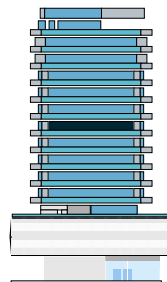
# UNIT 606

1 BEDROOM TYPE B



## UNIT SIZE

UNIT AREA	671.78FT <sup>2</sup>
BALCONY AREA	136.27FT <sup>2</sup>
TOTAL AREA	808.05FT <sup>2</sup>



PRESTIGE ONE

All drawings and dimensions are approximate. Drawings are not to scale and are subject to change without notice. The developer reserves the right to make revisions. The units are measured at typical floor in the building and columns may vary in size depending on the floor level. The furnishings and accessories shown are for representation only. The length and width of the Unit and balcony varies depending on which floor and which orientation the unit is located within the building to comply with the building authority regulations. Apartment unit sizes may vary. Actual unit sizes will be reflected on the Sales and Purchase Agreement.



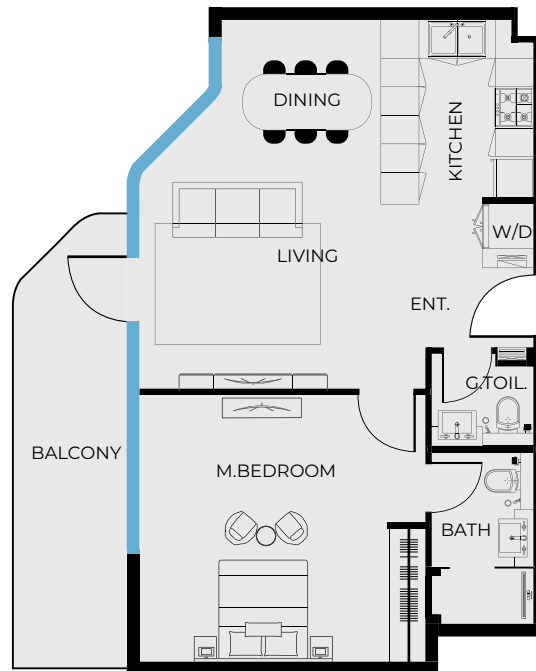
COASTAL  
HAVEN  
BY PRESTIGE HARBOUR

PRESTIGE ONE

COASTAL  
HAVEN  
BY PRESTIGE HARBOUR

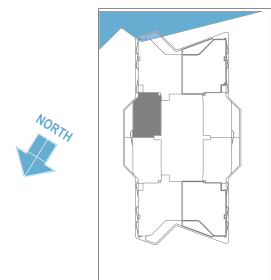
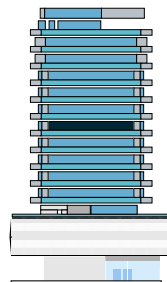
# UNIT 607

1 BEDROOM TYPE A



## UNIT SIZE

UNIT AREA	673.39FT <sup>2</sup>
BALCONY AREA	136.27FT <sup>2</sup>
TOTAL AREA	809.66FT <sup>2</sup>



PRESTIGE ONE

All drawings and dimensions are approximate. Drawings are not to scale and are subject to change without notice. The developer reserves the right to make revisions. The units are measured at typical floor in the building and columns may vary in size depending on the floor level. The furnishings and accessories shown are for representation only. The length and width of the Unit and balcony varies depending on which floor and which orientation the unit is located within the building to comply with the building authority regulations. Apartment unit sizes may vary. Actual unit sizes will be reflected on the Sales and Purchase Agreement.



COASTAL  
HAVEN  
BY PRESTIGE HARBOUR

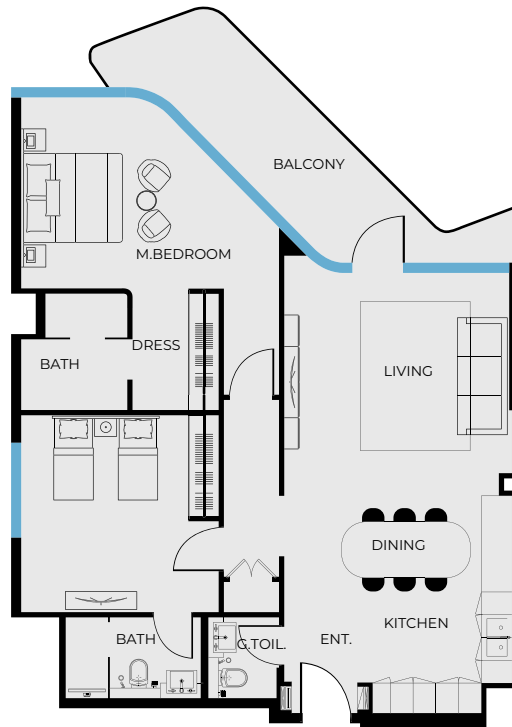
PRESTIGE ONE

# UNIT 608

2 BEDROOM TYPE B

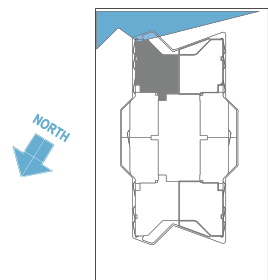
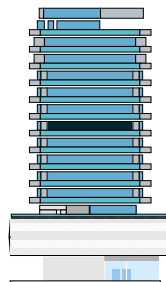
COASTAL  
HAVEN

BY PRESTIGE HARBOUR



## UNIT SIZE

UNIT AREA	1,071.44FT <sup>2</sup>
BALCONY AREA	172.65FT <sup>2</sup>
TOTAL AREA	1,244.09FT <sup>2</sup>



PRESTIGE ONE

All drawings and dimensions are approximate. Drawings are not to scale and are subject to change without notice. The developer reserves the right to make revisions. The units are measured at typical floor in the building and columns may vary in size depending on the floor level. The furnishings and accessories shown are for representation only. The length and width of the Unit and balcony varies depending on which floor and which orientation the unit is located within the building to comply with the building authority regulations. Apartment unit sizes may vary. Actual unit sizes will be reflected on the Sales and Purchase Agreement.



COASTAL  
HAVEN  
BY PRESTIGE HARBOUR

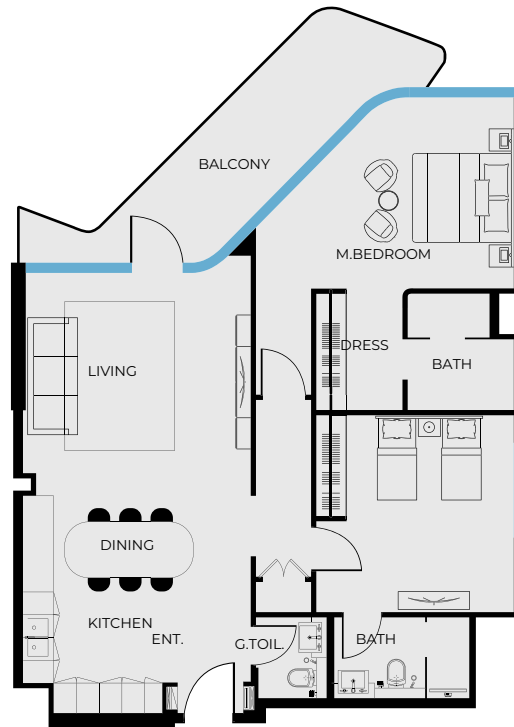
PRESTIGE ONE

# UNIT 701

2 BEDROOM TYPE B

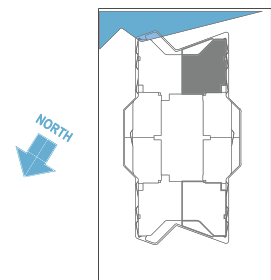
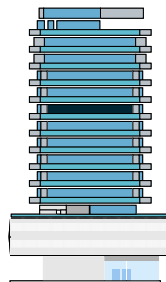
COASTAL  
HAVEN

BY PRESTIGE HARBOUR



## UNIT SIZE

UNIT AREA	1,071.65FT <sup>2</sup>
BALCONY AREA	172.22FT <sup>2</sup>
TOTAL AREA	1,243.88FT <sup>2</sup>



PRESTIGE ONE

All drawings and dimensions are approximate. Drawings are not to scale and are subject to change without notice. The developer reserves the right to make revisions. The units are measured at typical floor in the building and columns may vary in size depending on the floor level. The furnishings and accessories shown are for representation only. The length and width of the Unit and balcony varies depending on which floor and which orientation the unit is located within the building to comply with the building authority regulations. Apartment unit sizes may vary. Actual unit sizes will be reflected on the Sales and Purchase Agreement.



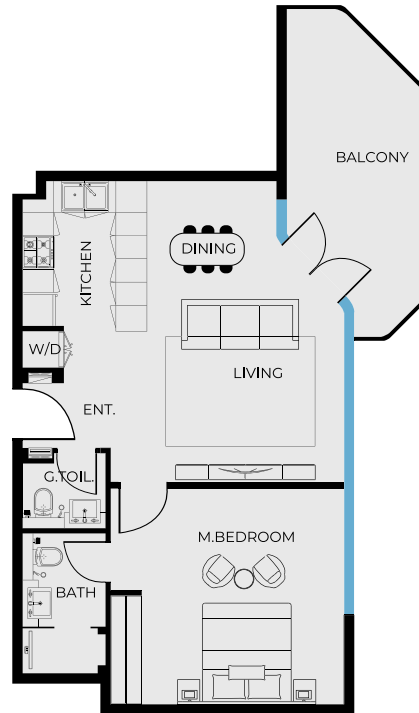
COASTAL  
HAVEN  
BY PRESTIGE HARBOUR

PRESTIGE ONE

COASTAL  
HAVEN  
BY PRESTIGE HARBOUR

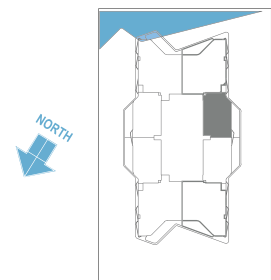
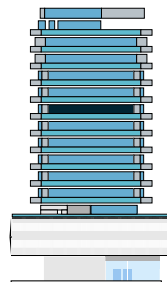
# UNIT 702

1 BEDROOM TYPE C



## UNIT SIZE

UNIT AREA	673.30FT <sup>2</sup>
BALCONY AREA	156.94FT <sup>2</sup>
TOTAL AREA	830.33FT <sup>2</sup>



PRESTIGE ONE

All drawings and dimensions are approximate. Drawings are not to scale and are subject to change without notice. The developer reserves the right to make revisions. The units are measured at typical floor in the building and columns may vary in size depending on the floor level. The furnishings and accessories shown are for representation only. The length and width of the Unit and balcony varies depending on which floor and which orientation the unit is located within the building to comply with the building authority regulations. Apartment unit sizes may vary. Actual unit sizes will be reflected on the Sales and Purchase Agreement.



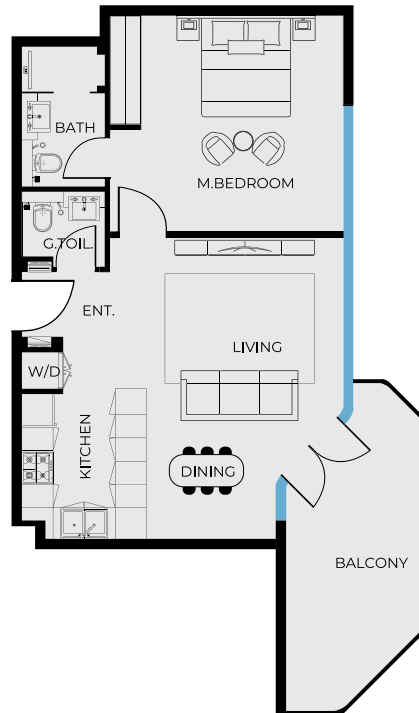
COASTAL  
HAVEN  
BY PRESTIGE HARBOUR

PRESTIGE ONE

COASTAL  
HAVEN  
BY PRESTIGE HARBOUR

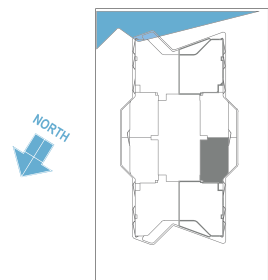
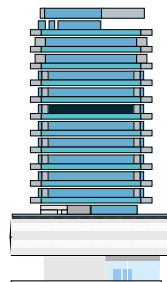
# UNIT 703

1 BEDROOM TYPE C



## UNIT SIZE

UNIT AREA	673.30FT <sup>2</sup>
BALCONY AREA	156.94FT <sup>2</sup>
TOTAL AREA	830.33FT <sup>2</sup>



PRESTIGE ONE

All drawings and dimensions are approximate. Drawings are not to scale and are subject to change without notice. The developer reserves the right to make revisions. The units are measured at typical floor in the building and columns may vary in size depending on the floor level. The furnishings and accessories shown are for representation only. The length and width of the Unit and balcony varies depending on which floor and which orientation the unit is located within the building to comply with the building authority regulations. Apartment unit sizes may vary. Actual unit sizes will be reflected on the Sales and Purchase Agreement.



COASTAL  
HAVEN  
BY PRESTIGE HARBOUR

PRESTIGE ONE

# UNIT 704

2 BEDROOM TYPE B

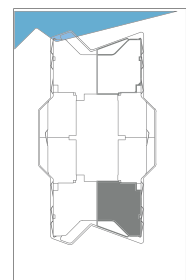
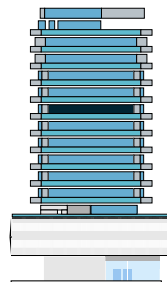
COASTAL  
HAVEN

BY PRESTIGE HARBOUR



## UNIT SIZE

UNIT AREA	1,071.65FT <sup>2</sup>
BALCONY AREA	172.11FT <sup>2</sup>
TOTAL AREA	1,243.77FT <sup>2</sup>



PRESTIGE ONE

All drawings and dimensions are approximate. Drawings are not to scale and are subject to change without notice. The developer reserves the right to make revisions. The units are measured at typical floor in the building and columns may vary in size depending on the floor level. The furnishings and accessories shown are for representation only. The length and width of the Unit and balcony varies depending on which floor and which orientation the unit is located within the building to comply with the building authority regulations. Apartment unit sizes may vary. Actual unit sizes will be reflected on the Sales and Purchase Agreement.





COASTAL  
HAVEN  
BY PRESTIGE HARBOUR

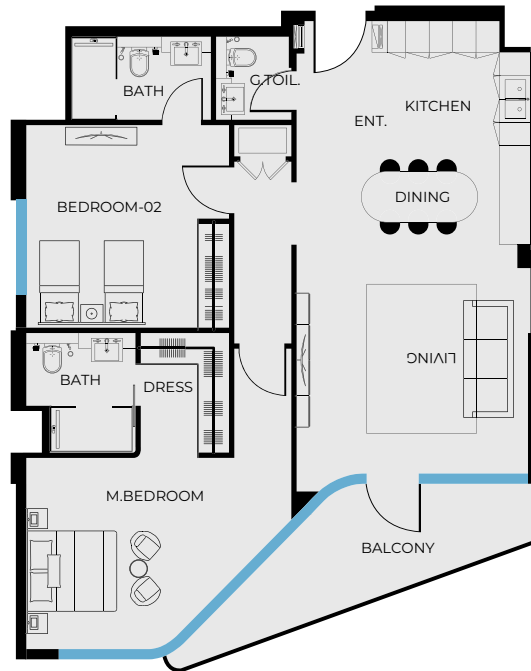
PRESTIGE ONE

# UNIT 705

2 BEDROOM TYPE A

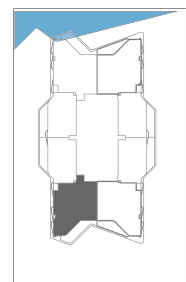
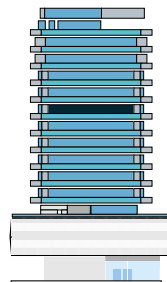
COASTAL  
HAVEN

BY PRESTIGE HARBOUR



## UNIT SIZE

UNIT AREA	1,071.65FT <sup>2</sup>
BALCONY AREA	128.74FT <sup>2</sup>
TOTAL AREA	1,200.39FT <sup>2</sup>



PRESTIGE ONE

All drawings and dimensions are approximate. Drawings are not to scale and are subject to change without notice. The developer reserves the right to make revisions. The units are measured at typical floor in the building and columns may vary in size depending on the floor level. The furnishings and accessories shown are for representation only. The length and width of the Unit and balcony varies depending on which floor and which orientation the unit is located within the building to comply with the building authority regulations. Apartment unit sizes may vary. Actual unit sizes will be reflected on the Sales and Purchase Agreement.



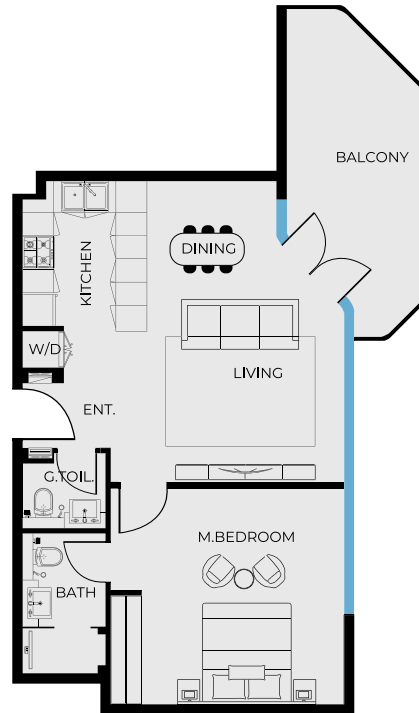
COASTAL  
HAVEN  
BY PRESTIGE HARBOUR

PRESTIGE ONE

COASTAL  
HAVEN  
BY PRESTIGE HARBOUR

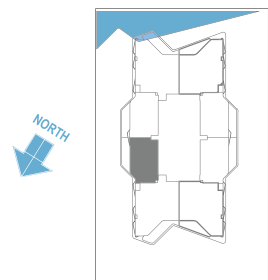
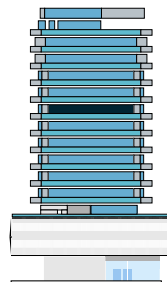
# UNIT 706

1 BEDROOM TYPE C



## UNIT SIZE

UNIT AREA	671.78FT <sup>2</sup>
BALCONY AREA	156.94FT <sup>2</sup>
TOTAL AREA	828.71FT <sup>2</sup>



PRESTIGE ONE

All drawings and dimensions are approximate. Drawings are not to scale and are subject to change without notice. The developer reserves the right to make revisions. The units are measured at typical floor in the building and columns may vary in size depending on the floor level. The furnishings and accessories shown are for representation only. The length and width of the Unit and balcony varies depending on which floor and which orientation the unit is located within the building to comply with the building authority regulations. Apartment unit sizes may vary. Actual unit sizes will be reflected on the Sales and Purchase Agreement.



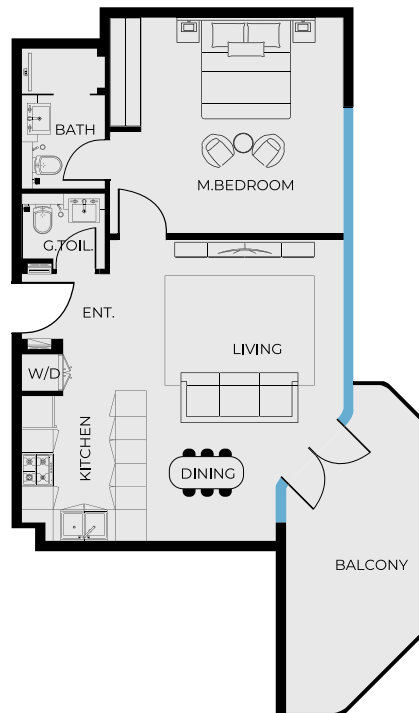
COASTAL  
HAVEN  
BY PRESTIGE HARBOUR

PRESTIGE ONE

COASTAL  
HAVEN  
BY PRESTIGE HARBOUR

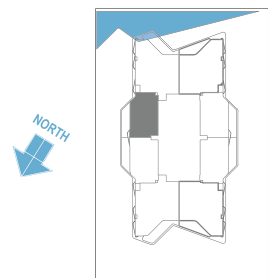
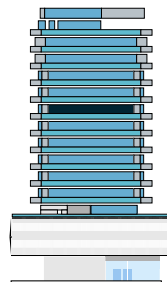
# UNIT 707

1 BEDROOM TYPE C



## UNIT SIZE

UNIT AREA	673.39FT <sup>2</sup>
BALCONY AREA	156.94FT <sup>2</sup>
TOTAL AREA	830.33FT <sup>2</sup>



PRESTIGE ONE

All drawings and dimensions are approximate. Drawings are not to scale and are subject to change without notice. The developer reserves the right to make revisions. The units are measured at typical floor in the building and columns may vary in size depending on the floor level. The furnishings and accessories shown are for representation only. The length and width of the Unit and balcony varies depending on which floor and which orientation the unit is located within the building to comply with the building authority regulations. Apartment unit sizes may vary. Actual unit sizes will be reflected on the Sales and Purchase Agreement.



COASTAL  
HAVEN  
BY PRESTIGE HARBOUR

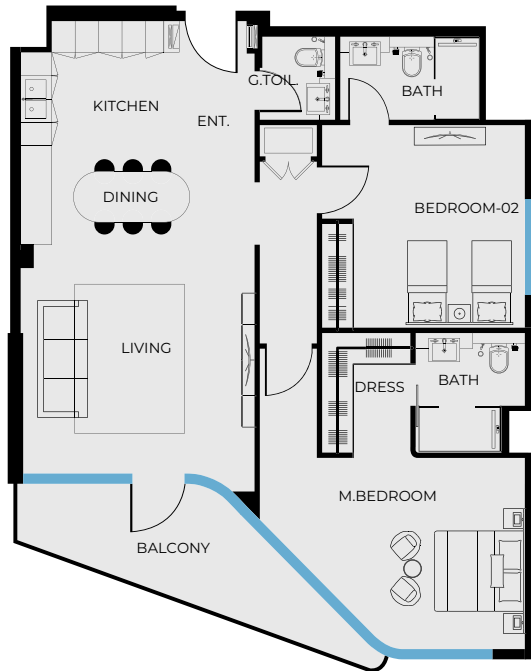
PRESTIGE ONE

# UNIT 708

2 BEDROOM TYPE A

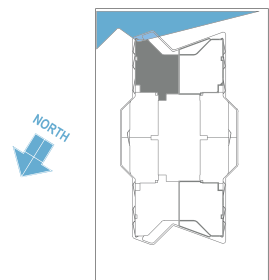
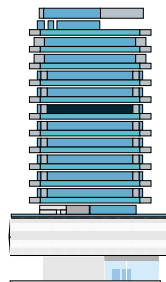
COASTAL  
HAVEN

BY PRESTIGE HARBOUR



## UNIT SIZE

UNIT AREA	1,071.65FT <sup>2</sup>
BALCONY AREA	128.74FT <sup>2</sup>
TOTAL AREA	1,200.39FT <sup>2</sup>



PRESTIGE ONE

All drawings and dimensions are approximate. Drawings are not to scale and are subject to change without notice. The developer reserves the right to make revisions. The units are measured at typical floor in the building and columns may vary in size depending on the floor level. The furnishings and accessories shown are for representation only. The length and width of the Unit and balcony varies depending on which floor and which orientation the unit is located within the building to comply with the building authority regulations. Apartment unit sizes may vary. Actual unit sizes will be reflected on the Sales and Purchase Agreement.



COASTAL  
HAVEN  
BY PRESTIGE HARBOUR

PRESTIGE ONE

# UNIT 801

2 BEDROOM TYPE A

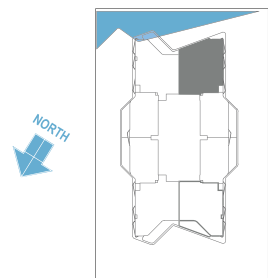
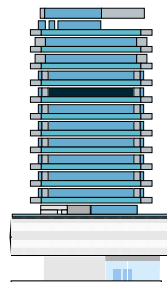
COASTAL  
HAVEN

BY PRESTIGE HARBOUR



## UNIT SIZE

UNIT AREA	1,071.44FT <sup>2</sup>
BALCONY AREA	129.27FT <sup>2</sup>
TOTAL AREA	1,200.71FT <sup>2</sup>



PRESTIGE ONE

All drawings and dimensions are approximate. Drawings are not to scale and are subject to change without notice. The developer reserves the right to make revisions. The units are measured at typical floor in the building and columns may vary in size depending on the floor level. The furnishings and accessories shown are for representation only. The length and width of the Unit and balcony varies depending on which floor and which orientation the unit is located within the building to comply with the building authority regulations. Apartment unit sizes may vary. Actual unit sizes will be reflected on the Sales and Purchase Agreement.



COASTAL  
HAVEN  
BY PRESTIGE HARBOUR

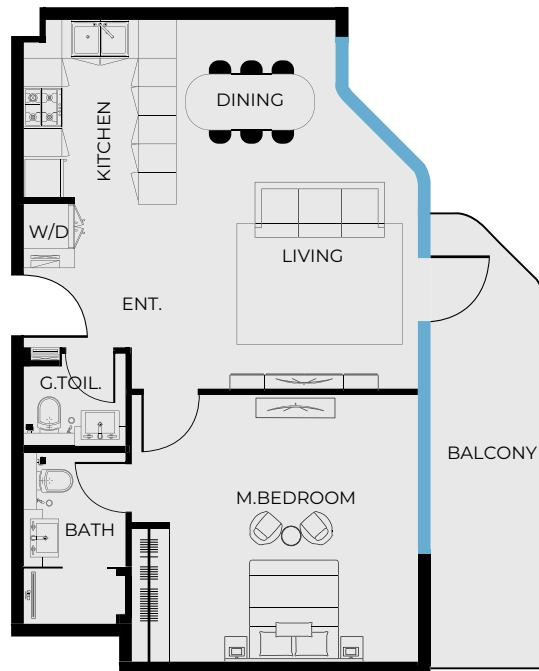
PRESTIGE ONE

COASTAL  
HAVEN

BY PRESTIGE HARBOUR

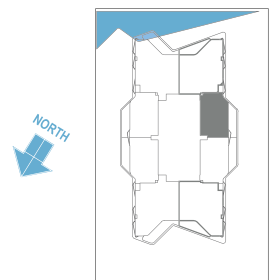
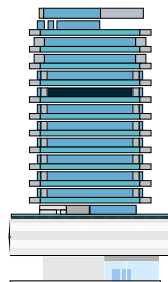
# UNIT 802

1 BEDROOM TYPE A



## UNIT SIZE

UNIT AREA	673.39FT <sup>2</sup>
BALCONY AREA	136.27FT <sup>2</sup>
TOTAL AREA	809.66FT <sup>2</sup>



PRESTIGE ONE

All drawings and dimensions are approximate. Drawings are not to scale and are subject to change without notice. The developer reserves the right to make revisions. The units are measured at typical floor in the building and columns may vary in size depending on the floor level. The furnishings and accessories shown are for representation only. The length and width of the Unit and balcony varies depending on which floor and which orientation the unit is located within the building to comply with the building authority regulations. Apartment unit sizes may vary. Actual unit sizes will be reflected on the Sales and Purchase Agreement.



COASTAL  
HAVEN  
BY PRESTIGE HARBOUR

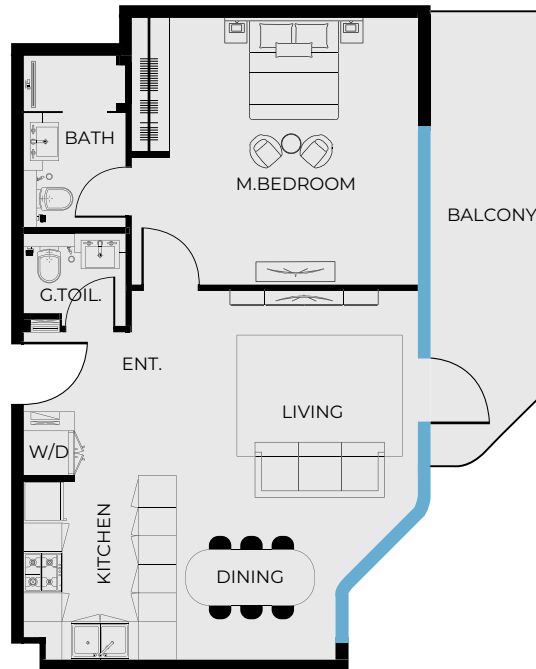
PRESTIGE ONE

COASTAL  
HAVEN

BY PRESTIGE HARBOUR

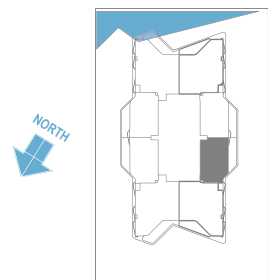
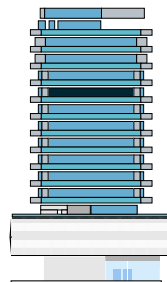
# UNIT 803

1 BEDROOM TYPE B



## UNIT SIZE

UNIT AREA	673.39FT <sup>2</sup>
BALCONY AREA	136.27FT <sup>2</sup>
TOTAL AREA	809.66FT <sup>2</sup>



PRESTIGE ONE

All drawings and dimensions are approximate. Drawings are not to scale and are subject to change without notice. The developer reserves the right to make revisions. The units are measured at typical floor in the building and columns may vary in size depending on the floor level. The furnishings and accessories shown are for representation only. The length and width of the Unit and balcony varies depending on which floor and which orientation the unit is located within the building to comply with the building authority regulations. Apartment unit sizes may vary. Actual unit sizes will be reflected on the Sales and Purchase Agreement.



COASTAL  
HAVEN  
BY PRESTIGE HARBOUR

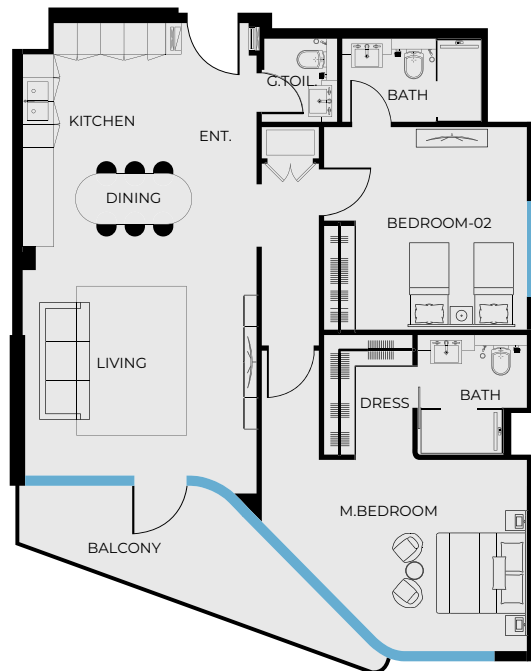
PRESTIGE ONE

# UNIT 804

2 BEDROOM TYPE A

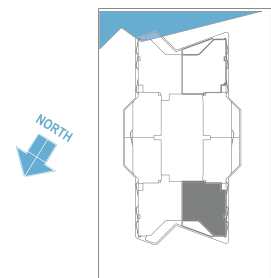
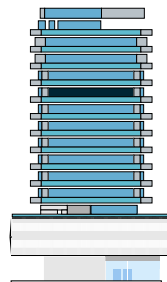
COASTAL  
HAVEN

BY PRESTIGE HARBOUR



## UNIT SIZE

UNIT AREA	1,071.44FT <sup>2</sup>
BALCONY AREA	129.27FT <sup>2</sup>
TOTAL AREA	1,200.71FT <sup>2</sup>



PRESTIGE ONE

All drawings and dimensions are approximate. Drawings are not to scale and are subject to change without notice. The developer reserves the right to make revisions. The units are measured at typical floor in the building and columns may vary in size depending on the floor level. The furnishings and accessories shown are for representation only. The length and width of the Unit and balcony varies depending on which floor and which orientation the unit is located within the building to comply with the building authority regulations. Apartment unit sizes may vary. Actual unit sizes will be reflected on the Sales and Purchase Agreement.





COASTAL  
HAVEN  
BY PRESTIGE HARBOUR

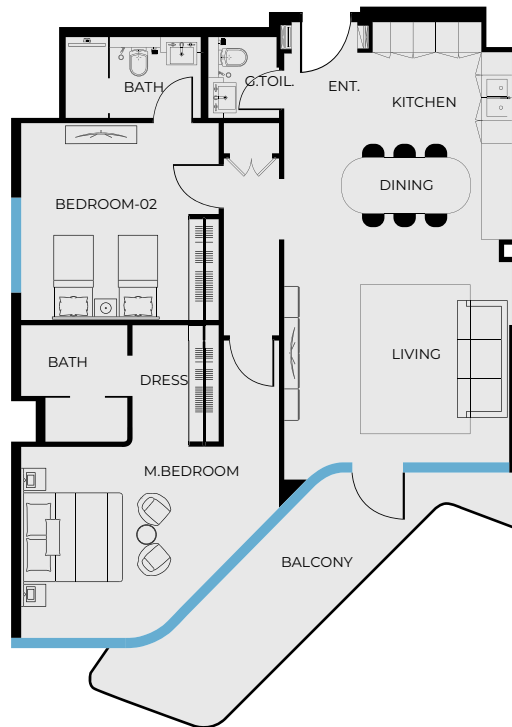
PRESTIGE ONE

# UNIT 805

2 BEDROOM TYPE B

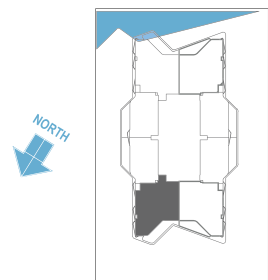
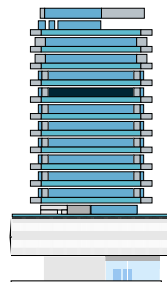
COASTAL  
HAVEN

BY PRESTIGE HARBOUR



## UNIT SIZE

UNIT AREA	1,071.44FT <sup>2</sup>
BALCONY AREA	172.65FT <sup>2</sup>
TOTAL AREA	1,244.09FT <sup>2</sup>



PRESTIGE ONE

All drawings and dimensions are approximate. Drawings are not to scale and are subject to change without notice. The developer reserves the right to make revisions. The units are measured at typical floor in the building and columns may vary in size depending on the floor level. The furnishings and accessories shown are for representation only. The length and width of the Unit and balcony varies depending on which floor and which orientation the unit is located within the building to comply with the building authority regulations. Apartment unit sizes may vary. Actual unit sizes will be reflected on the Sales and Purchase Agreement.



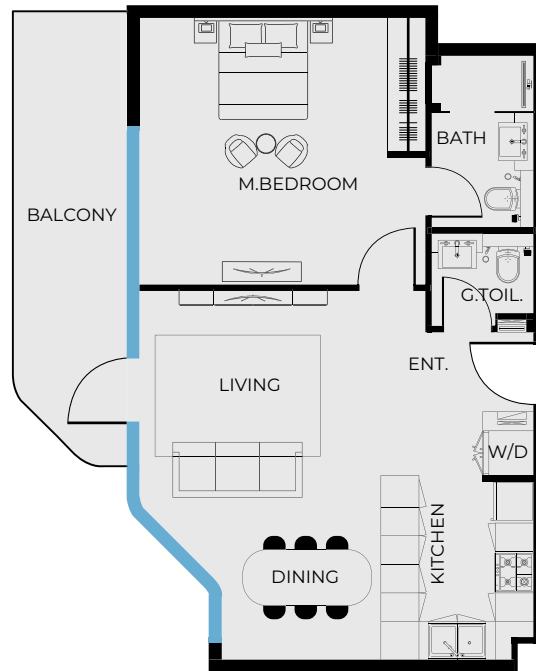
COASTAL  
HAVEN  
BY PRESTIGE HARBOUR

PRESTIGE ONE

COASTAL  
HAVEN  
BY PRESTIGE HARBOUR

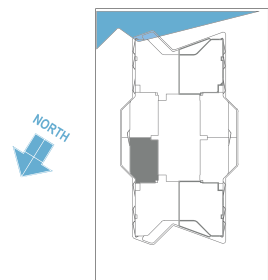
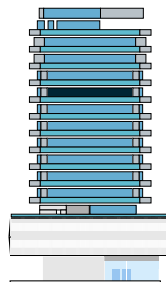
# UNIT 806

1 BEDROOM TYPE B



## UNIT SIZE

UNIT AREA	671.78FT <sup>2</sup>
BALCONY AREA	136.27FT <sup>2</sup>
TOTAL AREA	808.05FT <sup>2</sup>



PRESTIGE ONE

All drawings and dimensions are approximate. Drawings are not to scale and are subject to change without notice. The developer reserves the right to make revisions. The units are measured at typical floor in the building and columns may vary in size depending on the floor level. The furnishings and accessories shown are for representation only. The length and width of the Unit and balcony varies depending on which floor and which orientation the unit is located within the building to comply with the building authority regulations. Apartment unit sizes may vary. Actual unit sizes will be reflected on the Sales and Purchase Agreement.



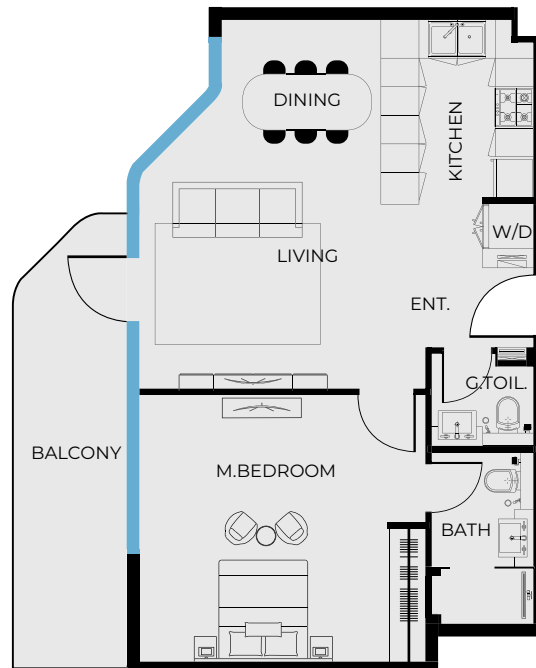
COASTAL  
HAVEN  
BY PRESTIGE HARBOUR

PRESTIGE ONE

COASTAL  
HAVEN  
BY PRESTIGE HARBOUR

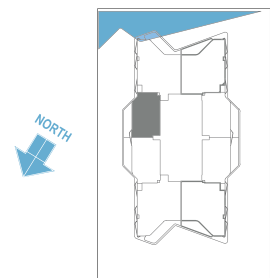
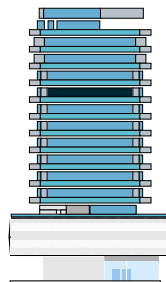
# UNIT 807

1 BEDROOM TYPE A



## UNIT SIZE

UNIT AREA	673.39FT <sup>2</sup>
BALCONY AREA	136.27FT <sup>2</sup>
TOTAL AREA	809.66FT <sup>2</sup>



PRESTIGE ONE

All drawings and dimensions are approximate. Drawings are not to scale and are subject to change without notice. The developer reserves the right to make revisions. The units are measured at typical floor in the building and columns may vary in size depending on the floor level. The furnishings and accessories shown are for representation only. The length and width of the Unit and balcony varies depending on which floor and which orientation the unit is located within the building to comply with the building authority regulations. Apartment unit sizes may vary. Actual unit sizes will be reflected on the Sales and Purchase Agreement.

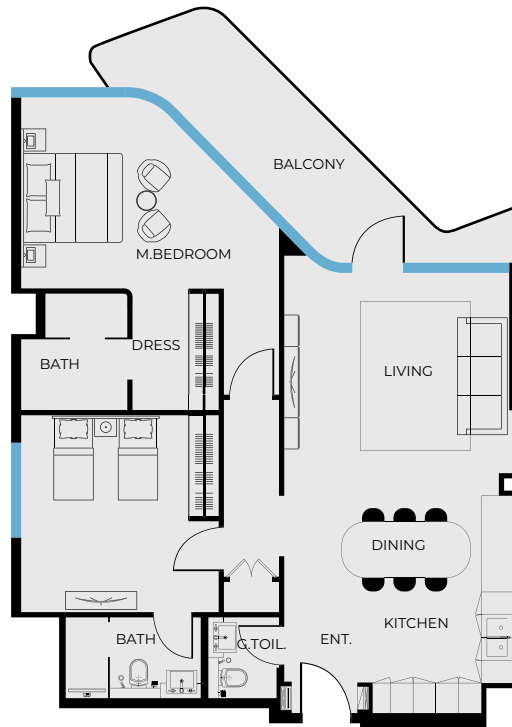


# UNIT 808

2 BEDROOM TYPE B

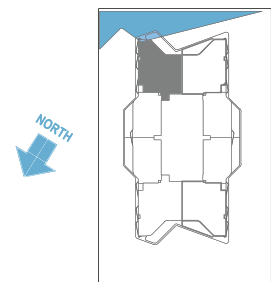
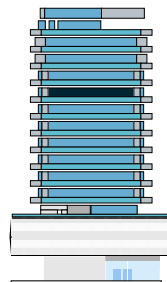
COASTAL  
HAVEN

BY PRESTIGE HARBOUR



## UNIT SIZE

UNIT AREA	1,071.44FT <sup>2</sup>
BALCONY AREA	172.65FT <sup>2</sup>
TOTAL AREA	1,244.09FT <sup>2</sup>





COASTAL  
HAVEN  
BY PRESTIGE HARBOUR

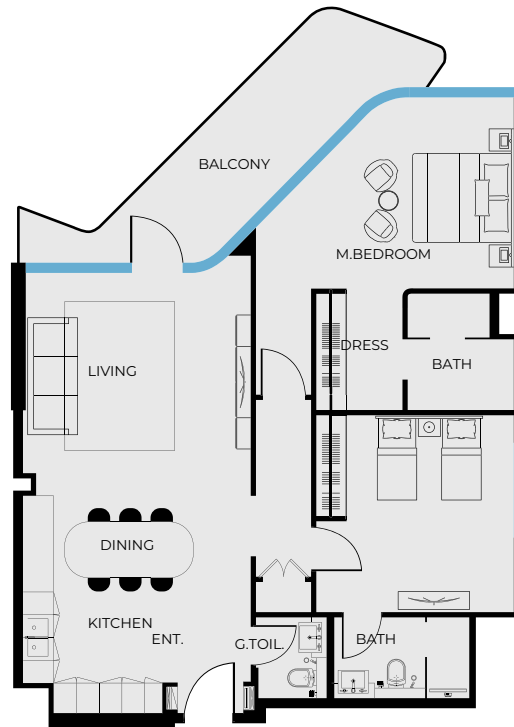
PRESTIGE ONE

# UNIT 901

2 BEDROOM TYPE A

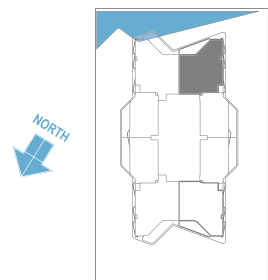
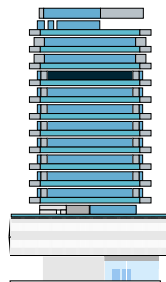
COASTAL  
HAVEN

BY PRESTIGE HARBOUR



## UNIT SIZE

UNIT AREA	1,071.55FT <sup>2</sup>
BALCONY AREA	172.65FT <sup>2</sup>
TOTAL AREA	1,244.20FT <sup>2</sup>



PRESTIGE ONE

All drawings and dimensions are approximate. Drawings are not to scale and are subject to change without notice. The developer reserves the right to make revisions. The units are measured at typical floor in the building and columns may vary in size depending on the floor level. The furnishings and accessories shown are for representation only. The length and width of the Unit and balcony varies depending on which floor and which orientation the unit is located within the building to comply with the building authority regulations. Apartment unit sizes may vary. Actual unit sizes will be reflected on the Sales and Purchase Agreement.



COASTAL  
HAVEN  
BY PRESTIGE HARBOUR

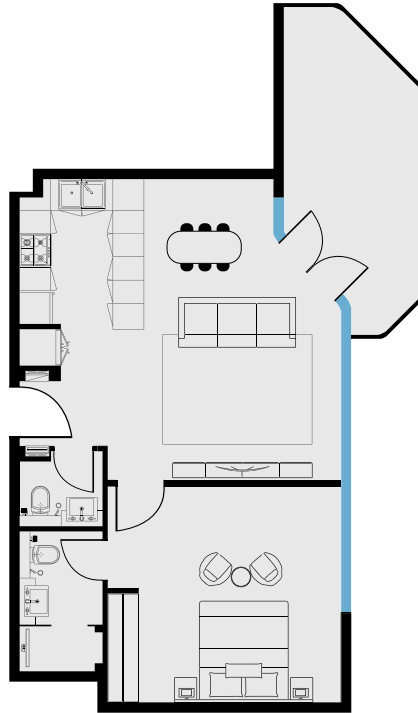
PRESTIGE ONE

# UNIT 902

1 BEDROOM TYPE A

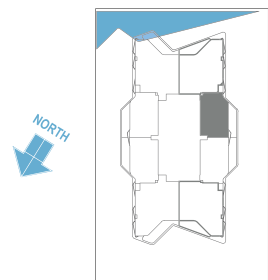
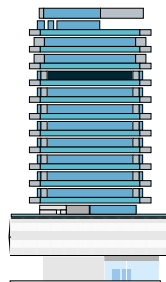
COASTAL  
HAVEN

BY PRESTIGE HARBOUR



## UNIT SIZE

UNIT AREA	673.39FT <sup>2</sup>
BALCONY AREA	156.94FT <sup>2</sup>
TOTAL AREA	830.33FT <sup>2</sup>



PRESTIGE ONE

All drawings and dimensions are approximate. Drawings are not to scale and are subject to change without notice. The developer reserves the right to make revisions. The units are measured at typical floor in the building and columns may vary in size depending on the floor level. The furnishings and accessories shown are for representation only. The length and width of the Unit and balcony varies depending on which floor and which orientation the unit is located within the building to comply with the building authority regulations. Apartment unit sizes may vary. Actual unit sizes will be reflected on the Sales and Purchase Agreement.



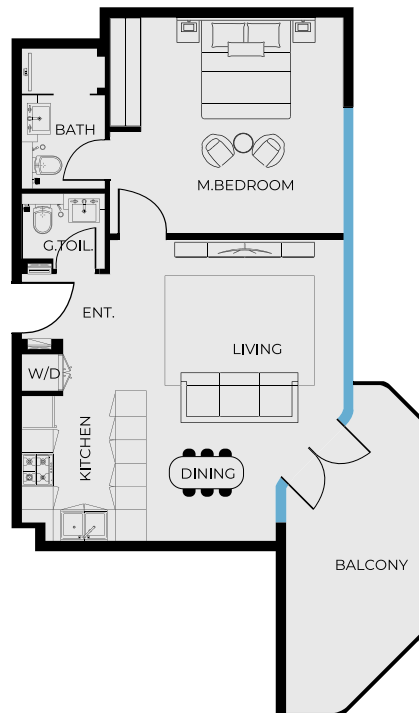
COASTAL  
HAVEN  
BY PRESTIGE HARBOUR

PRESTIGE ONE

COASTAL  
HAVEN  
BY PRESTIGE HARBOUR

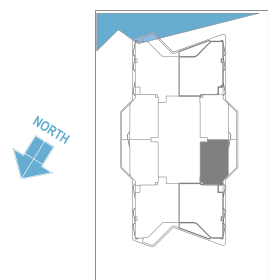
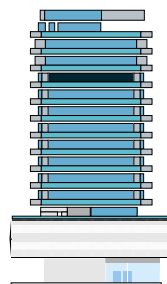
# UNIT 903

1 BEDROOM TYPE B



## UNIT SIZE

UNIT AREA	673.39FT <sup>2</sup>
BALCONY AREA	156.94FT <sup>2</sup>
TOTAL AREA	830.33FT <sup>2</sup>



PRESTIGE ONE

All drawings and dimensions are approximate. Drawings are not to scale and are subject to change without notice. The developer reserves the right to make revisions. The units are measured at typical floor in the building and columns may vary in size depending on the floor level. The furnishings and accessories shown are for representation only. The length and width of the Unit and balcony varies depending on which floor and which orientation the unit is located within the building to comply with the building authority regulations. Apartment unit sizes may vary. Actual unit sizes will be reflected on the Sales and Purchase Agreement.



# UNIT 904

2 BEDROOM TYPE A

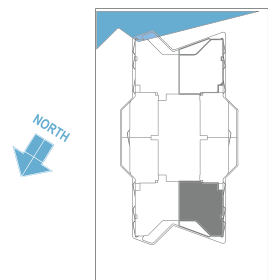
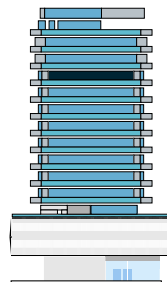
# COASTAL HAVEN

BY PRESTIGE HARBOUR



## UNIT SIZE

UNIT AREA	1,071.44FT <sup>2</sup>
BALCONY AREA	172.65FT <sup>2</sup>
TOTAL AREA	1,244.09FT <sup>2</sup>







COASTAL  
HAVEN  
BY PRESTIGE HARBOUR

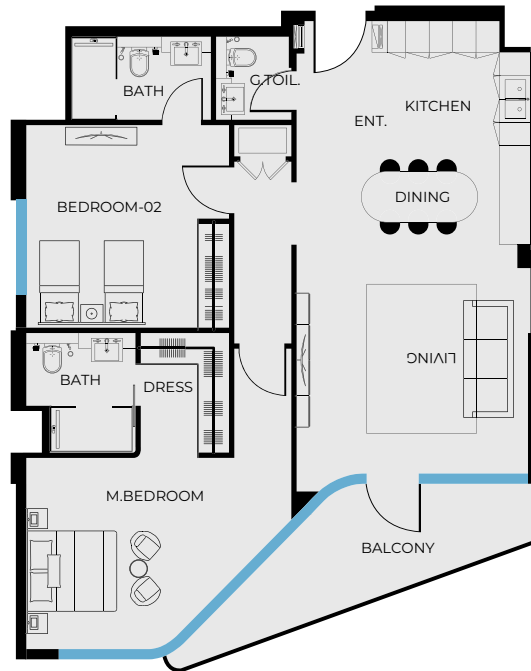
PRESTIGE ONE

# UNIT 905

2 BEDROOM TYPE B

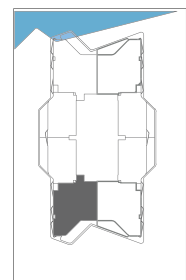
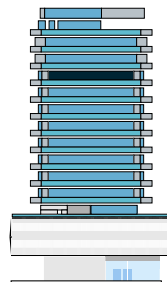
COASTAL  
HAVEN

BY PRESTIGE HARBOUR



## UNIT SIZE

UNIT AREA	1,071.65FT <sup>2</sup>
BALCONY AREA	128.84FT <sup>2</sup>
TOTAL AREA	1,200.50FT <sup>2</sup>



PRESTIGE ONE

All drawings and dimensions are approximate. Drawings are not to scale and are subject to change without notice. The developer reserves the right to make revisions. The units are measured at typical floor in the building and columns may vary in size depending on the floor level. The furnishings and accessories shown are for representation only. The length and width of the Unit and balcony varies depending on which floor and which orientation the unit is located within the building to comply with the building authority regulations. Apartment unit sizes may vary. Actual unit sizes will be reflected on the Sales and Purchase Agreement.



COASTAL  
HAVEN  
BY PRESTIGE HARBOUR

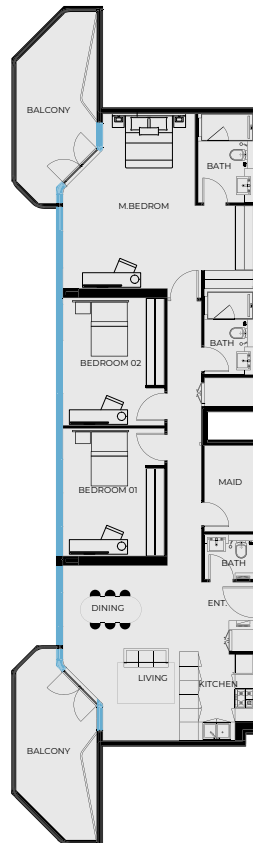
PRESTIGE ONE

# UNIT 906

3 BEDROOM TYPE A

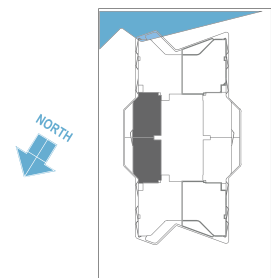
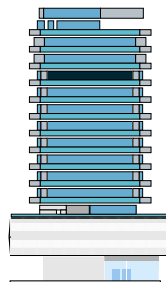
COASTAL  
HAVEN

BY PRESTIGE HARBOUR



## UNIT SIZE

UNIT AREA	1,351.62FT <sup>2</sup>
BALCONY AREA	313.98FT <sup>2</sup>
TOTAL AREA	1,665.61FT <sup>2</sup>



PRESTIGE ONE

All drawings and dimensions are approximate. Drawings are not to scale and are subject to change without notice. The developer reserves the right to make revisions. The units are measured at typical floor in the building and columns may vary in size depending on the floor level. The furnishings and accessories shown are for representation only. The length and width of the Unit and balcony varies depending on which floor and which orientation the unit is located within the building to comply with the building authority regulations. Apartment unit sizes may vary. Actual unit sizes will be reflected on the Sales and Purchase Agreement.



COASTAL  
HAVEN  
BY PRESTIGE HARBOUR

PRESTIGE ONE

COASTAL  
HAVEN  
BY PRESTIGE HARBOUR

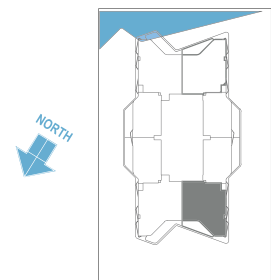
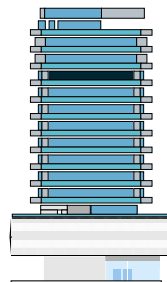
# UNIT 907

1 BEDROOM TYPE A



## UNIT SIZE

UNIT AREA	1,071.55FT <sup>2</sup>
BALCONY AREA	129.27FT <sup>2</sup>
TOTAL AREA	1,200.82FT <sup>2</sup>



PRESTIGE ONE

All drawings and dimensions are approximate. Drawings are not to scale and are subject to change without notice. The developer reserves the right to make revisions. The units are measured at typical floor in the building and columns may vary in size depending on the floor level. The furnishings and accessories shown are for representation only. The length and width of the Unit and balcony varies depending on which floor and which orientation the unit is located within the building to comply with the building authority regulations. Apartment unit sizes may vary. Actual unit sizes will be reflected on the Sales and Purchase Agreement.



# UNIT 1001

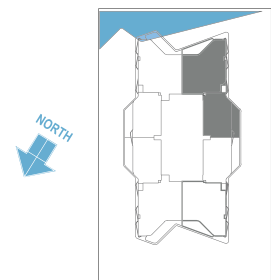
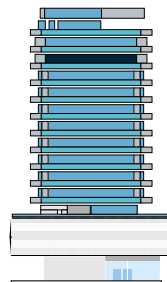
3 BEDROOM TYPE C

COASTAL  
HAVEN  
BY PRESTIGE HARBOUR



## UNIT SIZE

UNIT AREA	1,626.75FT <sup>2</sup>
BALCONY AREA	186.24FT <sup>2</sup>
TOTAL AREA	2,004.67FT <sup>2</sup>





# UNIT 1002

3 BEDROOM TYPE C

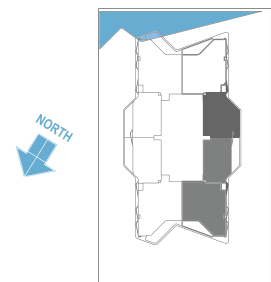
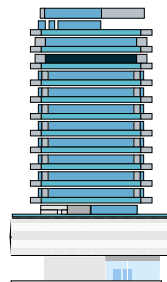
COASTAL  
HAVEN

BY PRESTIGE HARBOUR



## UNIT SIZE

UNIT AREA	1,627.61FT <sup>2</sup>
BALCONY AREA	186.31FT <sup>2</sup>
TOTAL AREA	2,005.42FT <sup>2</sup>





COASTAL  
HAVEN  
BY PRESTIGE HARBOUR

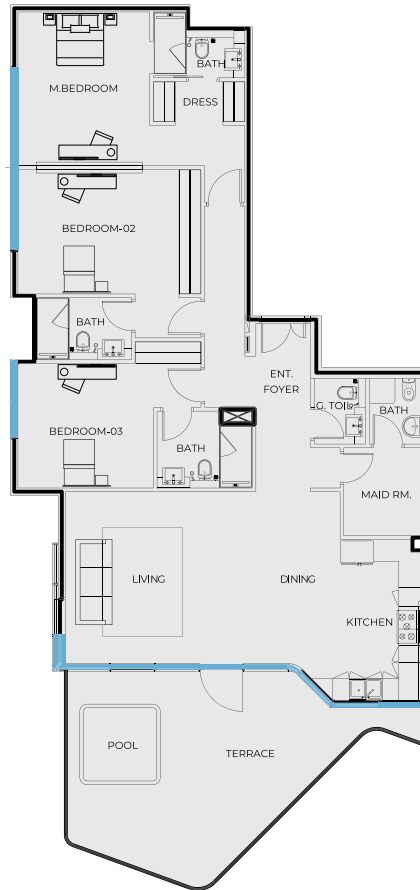
PRESTIGE ONE

# UNIT 1003

3 BEDROOM TYPE D

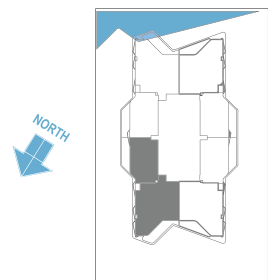
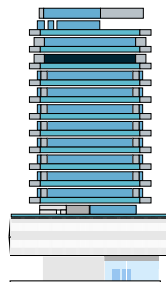
COASTAL  
HAVEN

BY PRESTIGE HARBOUR



## UNIT SIZE

UNIT AREA	1,627.50FT <sup>2</sup>
BALCONY AREA	408.60FT <sup>2</sup>
TOTAL AREA	2,036.10FT <sup>2</sup>



PRESTIGE ONE

All drawings and dimensions are approximate. Drawings are not to scale and are subject to change without notice. The developer reserves the right to make revisions. The units are measured at typical floor in the building and columns may vary in size depending on the floor level. The furnishings and accessories shown are for representation only. The length and width of the Unit and balcony varies depending on which floor and which orientation the unit is located within the building to comply with the building authority regulations. Apartment unit sizes may vary. Actual unit sizes will be reflected on the Sales and Purchase Agreement.



COASTAL  
HAVEN  
BY PRESTIGE HARBOUR

PRESTIGE ONE

# UNIT 1004

3 BEDROOM TYPE D

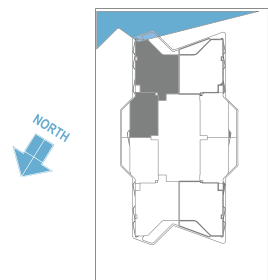
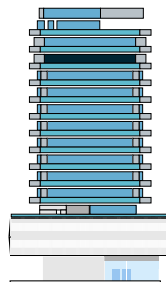
COASTAL  
HAVEN

BY PRESTIGE HARBOUR



## UNIT SIZE

UNIT AREA	1,626.75FT <sup>2</sup>
BALCONY AREA	408.60FT <sup>2</sup>
TOTAL AREA	2,035.35FT <sup>2</sup>



PRESTIGE ONE

All drawings and dimensions are approximate. Drawings are not to scale and are subject to change without notice. The developer reserves the right to make revisions. The units are measured at typical floor in the building and columns may vary in size depending on the floor level. The furnishings and accessories shown are for representation only. The length and width of the Unit and balcony varies depending on which floor and which orientation the unit is located within the building to comply with the building authority regulations. Apartment unit sizes may vary. Actual unit sizes will be reflected on the Sales and Purchase Agreement.



COASTAL  
HAVEN  
BY PRESTIGE HARBOUR

PRESTIGE ONE

# UNIT 1101

3 BEDROOM TYPE C

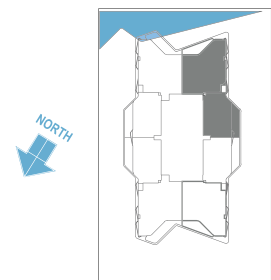
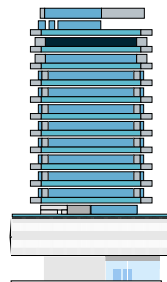
COASTAL  
HAVEN

BY PRESTIGE HARBOUR



## UNIT SIZE

UNIT AREA	1,626.75FT <sup>2</sup>
BALCONY AREA	417.88FT <sup>2</sup>
TOTAL AREA	2,044.60FT <sup>2</sup>



PRESTIGE ONE

All drawings and dimensions are approximate. Drawings are not to scale and are subject to change without notice. The developer reserves the right to make revisions. The units are measured at typical floor in the building and columns may vary in size depending on the floor level. The furnishings and accessories shown are for representation only. The length and width of the Unit and balcony varies depending on which floor and which orientation the unit is located within the building to comply with the building authority regulations. Apartment unit sizes may vary. Actual unit sizes will be reflected on the Sales and Purchase Agreement.





COASTAL  
HAVEN  
BY PRESTIGE HARBOUR

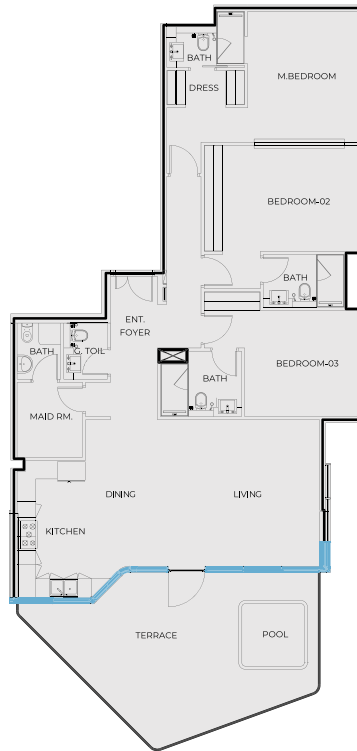
PRESTIGE ONE

# UNIT 1102

3 BEDROOM TYPE C

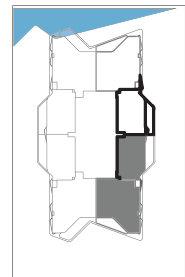
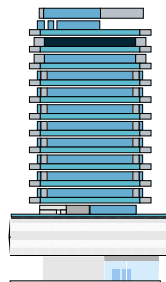
COASTAL  
HAVEN

BY PRESTIGE HARBOUR



## UNIT SIZE

UNIT AREA	1,627.61FT <sup>2</sup>
BALCONY AREA	417.75FT <sup>2</sup>
TOTAL AREA	2,045.36FT <sup>2</sup>



PRESTIGE ONE

All drawings and dimensions are approximate. Drawings are not to scale and are subject to change without notice. The developer reserves the right to make revisions. The units are measured at typical floor in the building and columns may vary in size depending on the floor level. The furnishings and accessories shown are for representation only. The length and width of the Unit and balcony varies depending on which floor and which orientation the unit is located within the building to comply with the building authority regulations. Apartment unit sizes may vary. Actual unit sizes will be reflected on the Sales and Purchase Agreement.



COASTAL  
HAVEN  
BY PRESTIGE HARBOUR

PRESTIGE ONE

# UNIT 1103

3 BEDROOM TYPE D

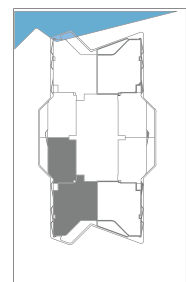
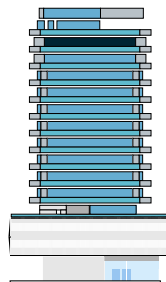
COASTAL  
HAVEN

BY PRESTIGE HARBOUR



## UNIT SIZE

UNIT AREA	1,627.61FT <sup>2</sup>
BALCONY AREA	298.91FT <sup>2</sup>
TOTAL AREA	1,926.52FT <sup>2</sup>



PRESTIGE ONE

All drawings and dimensions are approximate. Drawings are not to scale and are subject to change without notice. The developer reserves the right to make revisions. The units are measured at typical floor in the building and columns may vary in size depending on the floor level. The furnishings and accessories shown are for representation only. The length and width of the Unit and balcony varies depending on which floor and which orientation the unit is located within the building to comply with the building authority regulations. Apartment unit sizes may vary. Actual unit sizes will be reflected on the Sales and Purchase Agreement.



COASTAL  
HAVEN  
BY PRESTIGE HARBOUR

PRESTIGE ONE

# UNIT 1104

3 BEDROOM TYPE D

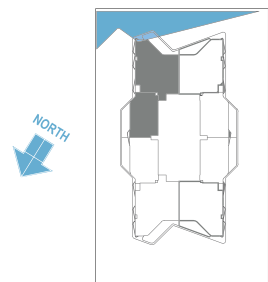
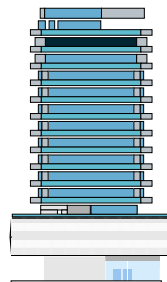
COASTAL  
HAVEN

BY PRESTIGE HARBOUR



## UNIT SIZE

UNIT AREA	1,626.75FT <sup>2</sup>
BALCONY AREA	299.02FT <sup>2</sup>
TOTAL AREA	1,925.77FT <sup>2</sup>



PRESTIGE ONE

All drawings and dimensions are approximate. Drawings are not to scale and are subject to change without notice. The developer reserves the right to make revisions. The units are measured at typical floor in the building and columns may vary in size depending on the floor level. The furnishings and accessories shown are for representation only. The length and width of the Unit and balcony varies depending on which floor and which orientation the unit is located within the building to comply with the building authority regulations. Apartment unit sizes may vary. Actual unit sizes will be reflected on the Sales and Purchase Agreement.



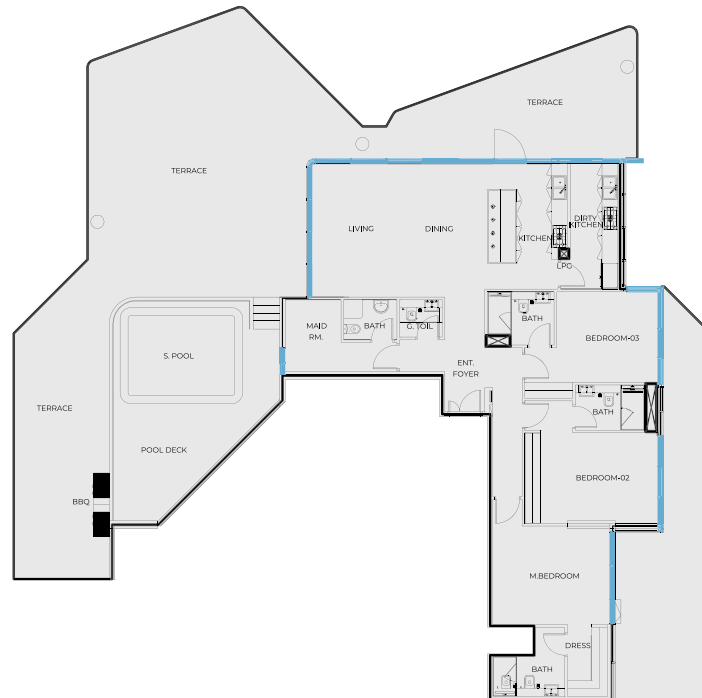
COASTAL  
HAVEN  
BY PRESTIGE HARBOUR

PRESTIGE ONE

# UNIT 1201

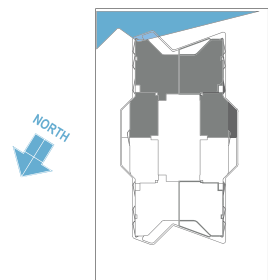
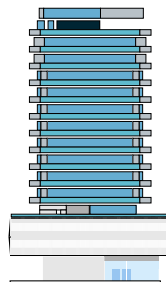
PENTHOUSE

COASTAL  
HAVEN  
BY PRESTIGE HARBOUR



## UNIT SIZE

UNIT AREA	1,804.46FT <sup>2</sup>
BALCONY AREA	2,612.29FT <sup>2</sup>
TOTAL AREA	4,416.76FT <sup>2</sup>



PRESTIGE ONE

All drawings and dimensions are approximate. Drawings are not to scale and are subject to change without notice. The developer reserves the right to make revisions. The units are measured at typical floor in the building and columns may vary in size depending on the floor level. The furnishings and accessories shown are for representation only. The length and width of the Unit and balcony varies depending on which floor and which orientation the unit is located within the building to comply with the building authority regulations. Apartment unit sizes may vary. Actual unit sizes will be reflected on the Sales and Purchase Agreement.



COASTAL  
HAVEN  
BY PRESTIGE HARBOUR

PRESTIGE ONE

# UNIT 1202

PENTHOUSE

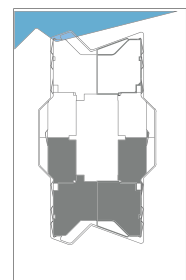
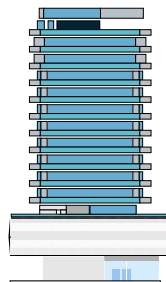
COASTAL  
HAVEN

BY PRESTIGE HARBOUR



## UNIT SIZE

UNIT AREA	1,805.32FT <sup>2</sup>
BALCONY AREA	2,614.34FT <sup>2</sup>
TOTAL AREA	4,419.66FT <sup>2</sup>



PRESTIGE ONE

All drawings and dimensions are approximate. Drawings are not to scale and are subject to change without notice. The developer reserves the right to make revisions. The units are measured at typical floor in the building and columns may vary in size depending on the floor level. The furnishings and accessories shown are for representation only. The length and width of the Unit and balcony varies depending on which floor and which orientation the unit is located within the building to comply with the building authority regulations. Apartment unit sizes may vary. Actual unit sizes will be reflected on the Sales and Purchase Agreement.