

ONE CRESCENT

PALM JUMEIRAH

A NEW WAVE OF LUXURY

FACT SHEET

THE LOCATION



2 MIN TO ATLANTIS



5 MIN TO NAKHEEL MALL



15 MIN TO BURJ AL ARAB



15 MIN TO DUBAI MARINA



15 MIN TO MALL OF THE EMIRATES



25 MIN TO DUBAI MALL



25 MIN TO DIFC



Palm Jumeirah

One of the world's most daring developments, the Palm Jumeirah in Dubai is a haven for vacationers. Jutting out into the Arabian Gulf, this artificial archipelago was built in the shape of a palm tree, with a 3-mile-long trunk and a fan of fronds lined with luxury villas and five-star hotels.



ENDLESS WATER VIEWS IN EVERY DIRECTION

One Crescent amenities represent the best of leisure, wellness and entertaining.

All set around Palm Crescent and designed with the building's sleek, nautical sensibility in mind from the elegant interior to the pools, spa, fitness, cigar lounge, residents have multiple spaces in which to relax, workout, socialize and enjoy this spectacular ocean-side, Burj Al Arab, Down-Town's Skyline's views.

RESIDENCE FEATURES

- Stunning G+9 Development
- Only 25 exclusive residences comprising of Penthouses, Sky Villas and two Sky Mansions
- Sizes ranging from 3,800 sq. ft. to 16,300 sq. ft.
- All residences with stunning Palm ocean view
- Private Elevators, that opens directly in your living room
- Exclusive membership to a World Class Golf course
- 24/7 Dedicated world wide concierge App By Lujo
- Expected delivery Q1, 2025

EXCLUSIVE AMENITIES



24 x 7 Luxury Concierge Service



Screening Room



Gym & Yoga Studio



Dedicated Concierge App



Cigar Lounge



World Class Spa



Residents Lounge



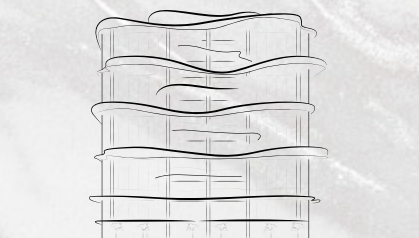
Direct Beach Access



Dedicated Chauffeur Service



Infinity Pools



ONE CRESCENT

PALM JUMEIRAH



INFO@AHS-PROPERTIES.COM | +971 (4) 4581821

SALES CENTRE - AHS PROPERTIES, HAPPINESS STREET, CITY WALK – UNIT 2, BUILDING 5, DUBAI, UAE. P.O. BOX: 2195

Instagram icon | AHS.PROPERTIES | AHS-PROPERTIES.COM