

# ONE CRESCENT

PALM JUMEIRAH

A NEW WAVE OF LUXURY

3  
BEDROOM  
PENTHOUSE/VILLA



# LOCATION

## LOCATED AT PALM JUMEIRAH

One of the world's most daring developments, the Palm Jumeirah in Dubai is a haven for vacationers. Jutting out into the Arabian Gulf, this artificial archipelago was built in the shape of a palm tree, with a 3-mile-long trunk and a fan of fronds lined with luxury villas and five-star hotels.



2 MIN TO ATLANTIS



5 MIN TO NAKHEEL MALL



15 MIN TO BURJ AL ARAB



15 MIN TO DUBAI MARINA



15 MIN TO MALL OF THE EMIRATES



25 MIN TO DUBAI MALL



25 MIN TO DIFC





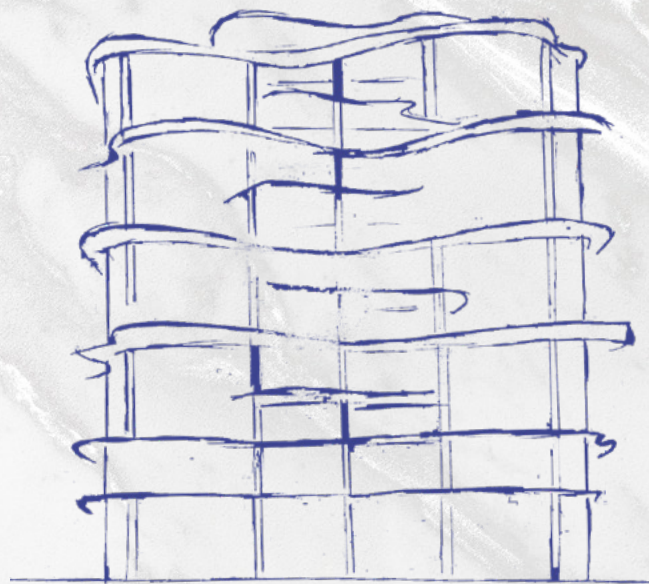
ARRIVE IN  
STYLE





# A NEW WAVE OF LIVING

Each curve on the exterior is placed deliberately to hold the unit pools and green pockets, giving the building a wave-like and integrated architectural character. One Crescent has 25 luxurious “Villas & Penthouses in the Sky” with stunning views of the Ocean, Burj Al Arab and the Dubai skyline, as well as terraces with private swimming pools and spacious entertainment areas. The entire design employs a simple material palette to embrace the distinctive style and emanates luxury living via its prominent presence in the metropolis.





**Killa Design** is dedicated to creating innovative buildings that are timeless, environmentally sustainable, and contextually inspired. They are specialise in mixed-use, high rise, hospitality, office, and residential projects. also They have significant experience in retail, theatre, museum, urban design, and master planning projects. Driven by design excellence, Shaun Killa is an awardwinning architect with international experience spanning over 26 years. Throughout his career, Shaun has focused his design philosophy on buildings and masterplans that are sustainable, innovative, contextually inspired and have a holistic approach to the natural and economic environment which has led to numerous highly recognisable iconic projects.

## **Shaun Killa**

Founder - Killa Design





# ONE UNIQUE STORY

A stunning collection of 3 Bedroom  
Penthouses & Villas

Bringing to life the concept of “Villas in the sky”.  
Inspired by the smooth and rhythmic curves of the Ocean waves. With distinctive  
features such as infinity edge pools, double height volumes, large terraces. The  
Residence aims to create a new standard of luxury living, and to make a lasting imprint.

3  
BEDROOM  
PENTHOUSE/VILLA



LIVING ROOM  
WITH STUNNING  
VIEWS





Living areas are set along the waterfront maximizing striking Ocean & Burj Al Arab views





# MASTER SUITE

The floor to ceiling curved glass windows are adding vertical volume and space to every room.





# MASTER BATHROOM

En-suite, luxurious  
bathrooms feature his  
and her split vanities with  
an oversized travertine  
shower and free-standing  
sculptural tub.





#### UNIT DETAILS - TYPE A1

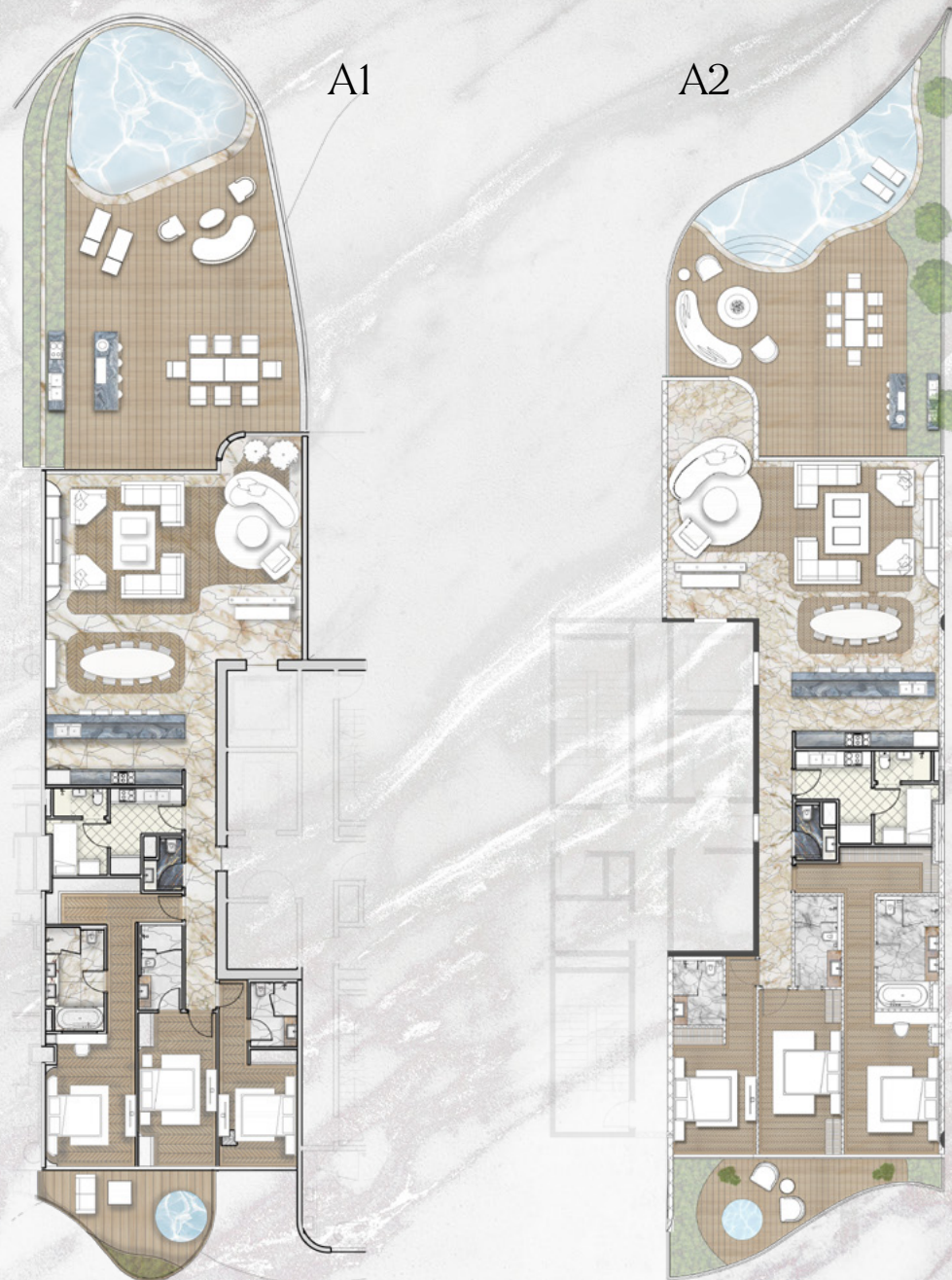
Residences	2,400 Sq.Ft.	223 Sq.M.
Terrace	1,800 Sq.Ft.	168 Sq.M.
Total	4200 Sq.Ft.	391 Sq.M

#### UNIT DETAILS - TYPE A2

Residences	2,400 Sq.Ft.	223 Sq.M.
Terrace	1,420 Sq.Ft.	132 Sq.M.
Total	3,820 Sq.Ft.	355 Sq.M



FLOOR MAPPING		
FLOOR	MAP	
3rd		
5th		
7th		
9th		

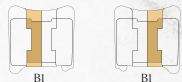




UNIT DETAILS - TYPE B

Residences	2,400 Sq.Ft.	223 Sq.M.
Terrace	2,000 Sq.Ft.	186 Sq.M.
Total	4,400. Sq.Ft.	409 Sq.M



FLOOR MAPPING	
FLOOR	MAP
1st	

B1

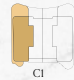





UNIT DETAILS - TYPE C Corner

Residences	2,900 Sq.Ft.	270 Sq.M.
Terrace	1,830 Sq.Ft.	170 Sq.M.
Total	4,730 Sq.Ft.	440 Sq.M



FLOOR MAPPING	
FLOOR	MAP
1st	 

C1






UNIT DETAILS - TYPE D1 Villa

Residences	2,800 Sq.Ft.	260 Sq.M.
Terrace	2,610 Sq.Ft.	245 Sq.M.
Total	5,410 Sq.Ft.	505 Sq.M

UNIT DETAILS - TYPE D2 Villa

Residences	2,790 Sq.Ft.	260 Sq.M.
Terrace	960 Sq.Ft.	90 Sq.M.
Total	3,750 Sq.Ft.	350 Sq.M



FLOOR MAPPING	
FLOOR	MAP
Ground	

D1



D2





# UNIT AMENITIES

01. Living
02. Dining
03. Show Kitchen
04. Boh Kitchen
05. Powder Room
06. Master Suite
07. Master Lounge
08. Guest Room 1
09. Guest Room 2
10. Laundry Room
11. Staff Quarters
12. Outdoor Terrace
13. Private Pool
14. Outdoor Dining Area
15. Tepanyaki Staton
16. Outdoor Seating Area

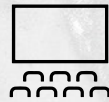




# BUILDING AMENITIES



24 x 7 Luxury Concierge Service



Screening Room



Gym & Yoga Studio



Dedicated Concierge App



Cigar Lounge



World Class Spa



Residents Lounge



Direct Beach Access

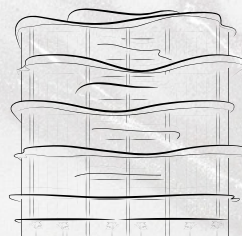


Dedicated Chauffeur Service



Infinity Pools






ONE CRESCENT  
PALM JUMEIRAH



INFO@AHS-PROPERTIES.COM | +971 (4) 4581821

SALES CENTRE - AHS PROPERTIES, HAPPINESS STREET, CITY WALK - UNIT 2, BUILDING 5, DUBAI, UAE. P.O. BOX: 2195

 AHS.PROPERTIES | AHS-PROPERTIES.COM