

ONE CRESCENT

PALM JUMEIRAH

A NEW WAVE OF LUXURY

LAYOUTS

The background of the entire image is a high-resolution, close-up photograph of a marble surface. The marble has a complex, organic pattern with swirling veins of light grey, off-white, and subtle hints of pinkish-beige. The texture is smooth but the pattern is highly detailed and non-repeating.

3 BED ROOM

PENTHOUSE/VILLA

UNIT DETAILS - TYPE A1

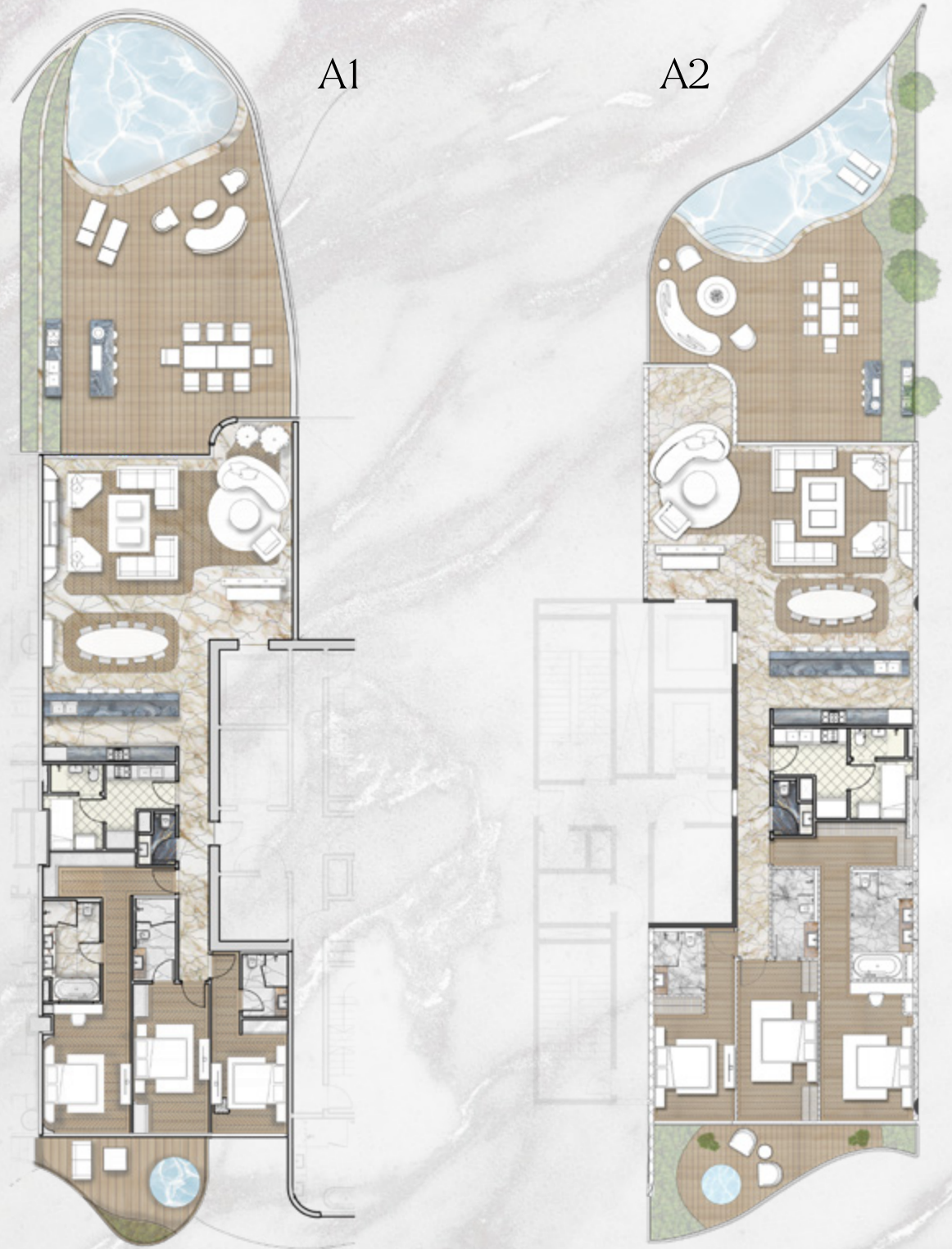
Residences	2,400 Sq.Ft.	223 Sq.M.
Terrace	1,800 Sq.Ft.	168 Sq.M.
Total	4200 Sq.Ft.	391 Sq.M

UNIT DETAILS - TYPE A2

Residences	2,400 Sq.Ft.	223 Sq.M.
Terrace	1,420 Sq.Ft.	132 Sq.M.
Total	3,820 Sq.Ft.	355 Sq.M



FLOOR MAPPING		
FLOOR	MAP	
3rd		
5th		
7th		
9th		




B1

UNIT DETAILS - TYPE B

Residences	2,400 Sq.Ft.	223 Sq.M.
Terrace	2,000 Sq.Ft.	186 Sq.M.
Total	4,400. Sq.Ft.	409 Sq.M



FLOOR MAPPING	
FLOOR	MAP
1st	 


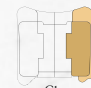


C1

UNIT DETAILS - TYPE C Corner

Residences	2,900 Sq.Ft.	270 Sq.M.
Terrace	1,830 Sq.Ft.	170 Sq.M.
Total	4,730 Sq.Ft.	440 Sq.M



FLOOR MAPPING		
FLOOR	MAP	
1st		

D1

D2

UNIT DETAILS - TYPE D1 Villa

Residences	2,800 Sq.Ft.	260 Sq.M.
Terrace	2,610 Sq.Ft.	245 Sq.M.
Total	5,410 Sq.Ft.	505 Sq.M

UNIT DETAILS - TYPE D2 Villa

Residences	2,790 Sq.Ft.	260 Sq.M.
Terrace	960 Sq.Ft.	90 Sq.M.
Total	3,750 Sq.Ft.	350 Sq.M



FLOOR MAPPING	
FLOOR	MAP
Ground	



The background of the entire image is a close-up of a marble surface. It features a complex pattern of veins in shades of light grey, off-white, and soft pink, set against a darker grey base. The veins are irregular and flowing, creating a sense of organic movement and depth.

4 BEDROOM

PENTHOUSE

UNIT DETAILS - TYPE PENTHOUSE

Residences	3,565 Sq.Ft.	332 Sq.M.
Terrace	1,895 Sq.Ft.	176 Sq.M.

Total	5,460 Sq.Ft.	508 Sq.M
-------	--------------	----------



FLOOR MAPPING	
FLOOR	MAP
2nd	
4th	
6th	



The background of the entire image is a close-up of a marble surface. It features a complex pattern of veins in shades of light grey, off-white, and soft pink, set against a darker grey base. The veins are irregular and flowing, creating a sense of organic movement and depth.

5 BEDROOM

SKY VILLA

UNIT DETAILS - SKYVILLA

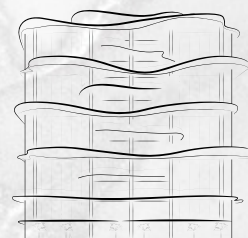
Residences	4,950 Sq.Ft.	460 Sq.M.
Terrace	2,991 Sq.Ft.	278 Sq.M.

Total 7,941 Sq.Ft. 738 Sq.M



FLOOR MAPPING	
FLOOR	MAP
2nd	
3rd	
4th	
5th	
6th	
7th	






ONE CRESCENT

PALM JUMEIRAH



INFO@AHS-PROPERTIES.COM | +971 (4) 4581821

SALES CENTRE - AHS PROPERTIES, HAPPINESS STREET, CITY WALK - UNIT 2, BUILDING 5, DUBAI, UAE. P.O. BOX: 2195

 AHS.PROPERTIES | AHS-PROPERTIES.COM