



Vision Avenue Homes

EMERALD VISION TOWER BY VISION AVENUE HOMES

Like a sturdy oak,
Rooted deep in the earth,
Life in growth is both the path and the fruition.



Emerald Vision Tower

The tower boasts a collection of luxurious residential units, offering breathtaking panoramic views of the city. Each space is designed for comfort and sophistication.



Swimming Pool at
Emerald Vision Tower



Wellness Sauna
Steam



Direct Access to
Mohammad bin Zayed Road



Neighbourhood
Parks

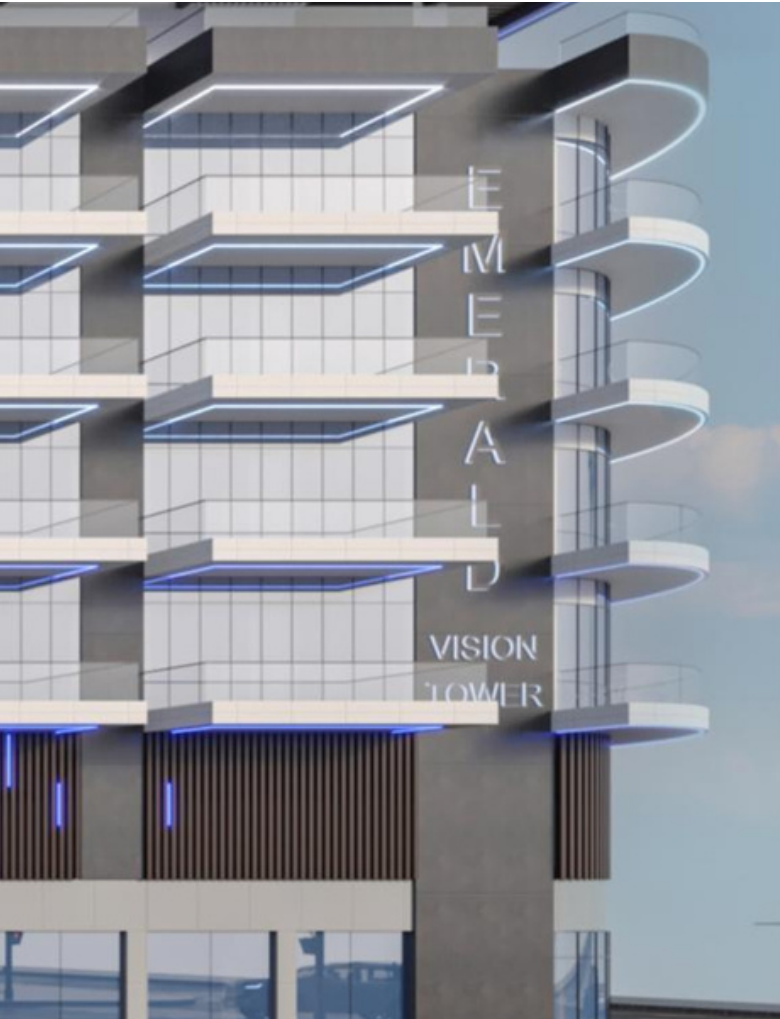


Library in Reception
Lobby



Nearby Licensed
Restaurants





Redefining Luxury Living: A New Era in Apartment Living



Welcome to Emerald Vision Tower, an extraordinary masterpiece by Vision Avenue Homes that redefines luxury living in the heart of the city. Nestled in a prime location, this opulent residential complex stands as a testament to elegance, comfort, and sophistication.

Emerald Vision Tower is not just another apartment complex; it's a statement of refinement and prestige. The architectural marvel pierces the skyline, making a bold impression with its sleek, modern design and shimmering facade.

Step into a world of extravagance as you enter your Emerald Vision Tower residence. Every detail, from the grand entrance lobby to the plush interiors of your apartment, has been meticulously crafted to offer the epitome of luxury. High ceilings, premium fixtures, and large windows that provide breathtaking views are just a few of the features that elevate your living experience.



A modern, luxurious interior space featuring large glass walls and doors. The floor is made of polished white marble with grey veining. The ceiling is white with recessed lighting. The interior is furnished with contemporary decor, including a large chandelier, a modern sofa, and a dining table. The space is bright and airy, with natural light coming through the glass walls. The overall aesthetic is clean, minimalist, and sophisticated.

A New Way in Luxury Living

*Where Luxury
Meets Lifestyle*



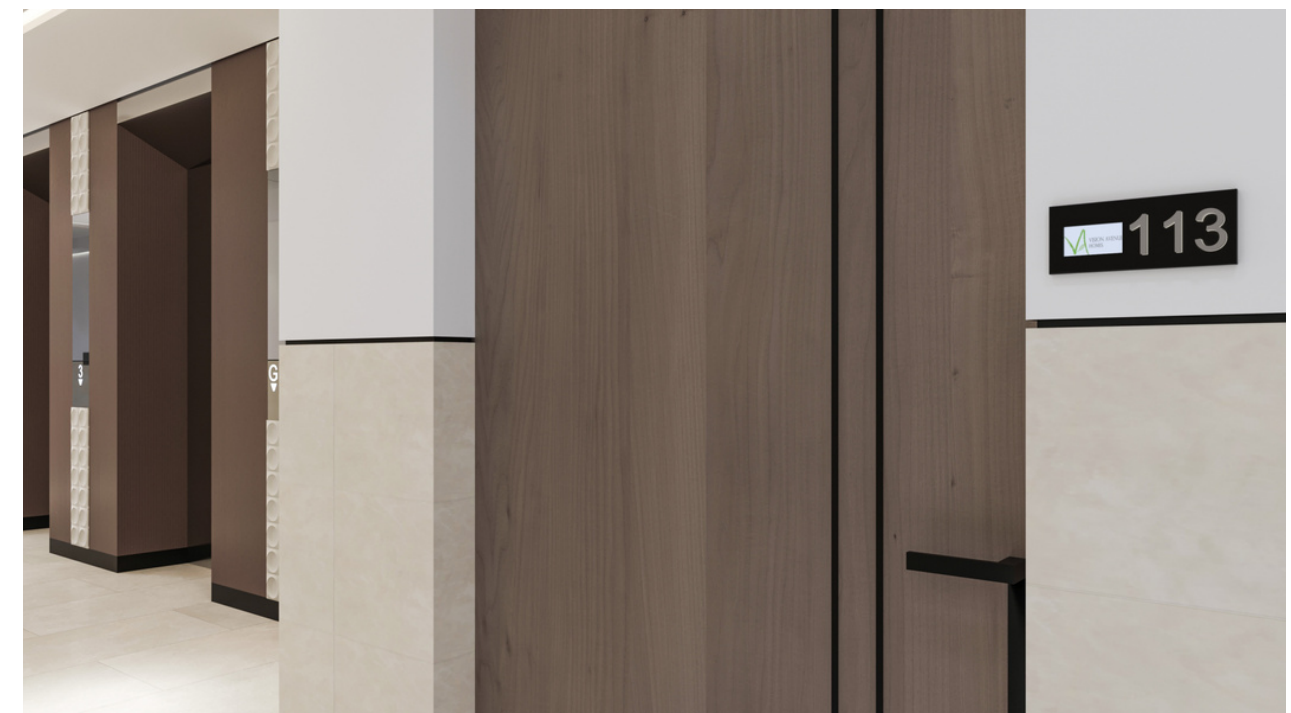
Reception

*Welcome to Elevated Living
at Emerald Vision Tower*



Shared Spaces

The lift lobby at Emerald Vision Tower transcends its utilitarian function, becoming a welcoming and stylish shared space that fosters connections and relaxation. With contemporary elegance, comfortable seating, and a touch of artistic ambiance, it's a place where neighbors become friends and residents can unwind, engage in friendly conversations, and soak in captivating views through large windows that fill the space with natural light. More than just a transition point, the lift lobby serves as a gateway to the tower's numerous amenities, making it a central hub for the community. Every detail in the lobby is thoughtfully designed to provide both functionality and beauty, offering residents a delightful gathering place where they can enjoy the luxurious environment that surrounds them and create meaningful moments of connection.



A modern, multi-story building with a glass facade and balconies, illuminated with blue LED lights. In the foreground, there is a large swimming pool with a wooden deck and lounge chairs. The sky is dark and cloudy.

Swimming Pool

*Dive into Luxury at
Emerald Vision Tower*

Apartment View

At Emerald Vision Tower, we are not only dedicated to creating luxurious living spaces but also to ensuring that each resident experiences the beauty of their surroundings to the fullest. The apartment views from our tower are nothing short of spectacular, offering an ever-changing canvas of urban splendor that will leave you in awe.

Every apartment at Emerald Vision Tower is designed to maximize the incredible views that surround it. Our floor-to-ceiling windows provide an uninterrupted panorama of the cityscape, allowing you to witness the heartbeat of the metropolis day and night. Whether you choose a cozy one-bedroom unit or a sprawling penthouse, the city's charm is at your doorstep.



Master Bedroom

The bedroom in your apartment at Emerald Vision Tower is not just a room; it's your personal sanctuary, a space where you can unwind, rejuvenate, and escape from the hustle and bustle of the city. Here, we have meticulously designed and decorated every aspect of your bedroom to ensure it epitomizes comfort, style, and tranquility. Space is a luxury, and your bedroom reflects this understanding. From the moment you enter, you'll appreciate the generous floor plan that allows for various layout options. Whether you prefer a king-sized bed, a cozy reading nook, or a personal workspace, your bedroom accommodates your needs and preferences.



Kitchen Culinary Excellence

A comprehensive guide

Apartments of discerning taste

Spectacular layouts

High standards of quality and design

24-hour security

Private covered parking

360° views

Ground-floor level

Retail and F&B



Amenities

State-of-art amenities platform

Podium roof garden with world class amenities

Infinity pool

Active area

Lawn activaton

Outdoor kitchen

Gym

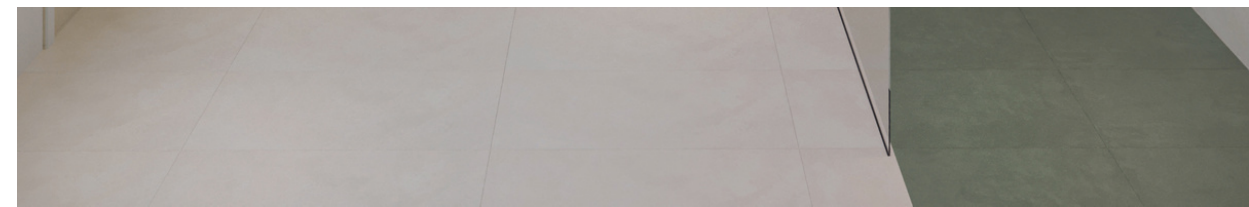
Kids' pool

BBQ pods



Designed Bathroom

At Emerald Vision Tower, we believe in pampering our residents with the best. This philosophy extends to the bathroom, where high-end fixtures and finishes are the standard. From the gleaming faucets to the soft-close vanity drawers, every element is designed to deliver a sense of luxury and convenience. Your bathroom is more than just a place to get ready; it's a spa-like retreat. Our bathrooms feature deep soaking tubs and spacious walk-in showers, both designed to provide you with a soothing, revitalizing experience. You'll find that every day can be a spa day at Emerald Vision Tower.



1 Bedroom Apartment Plus Utility Room

Type A

SUITE AREA:

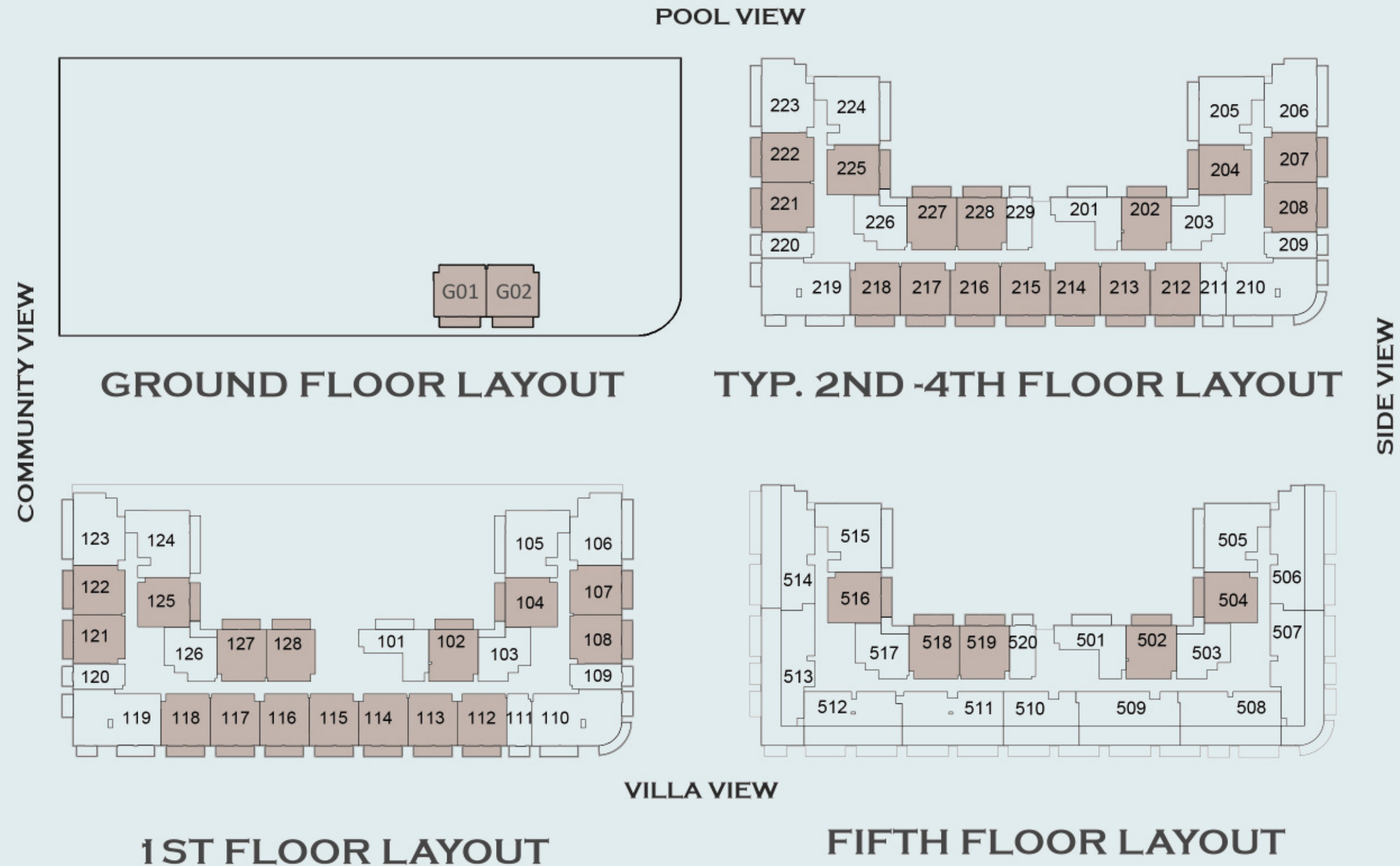
64.65 SQ.M / 695.89 SQ.F

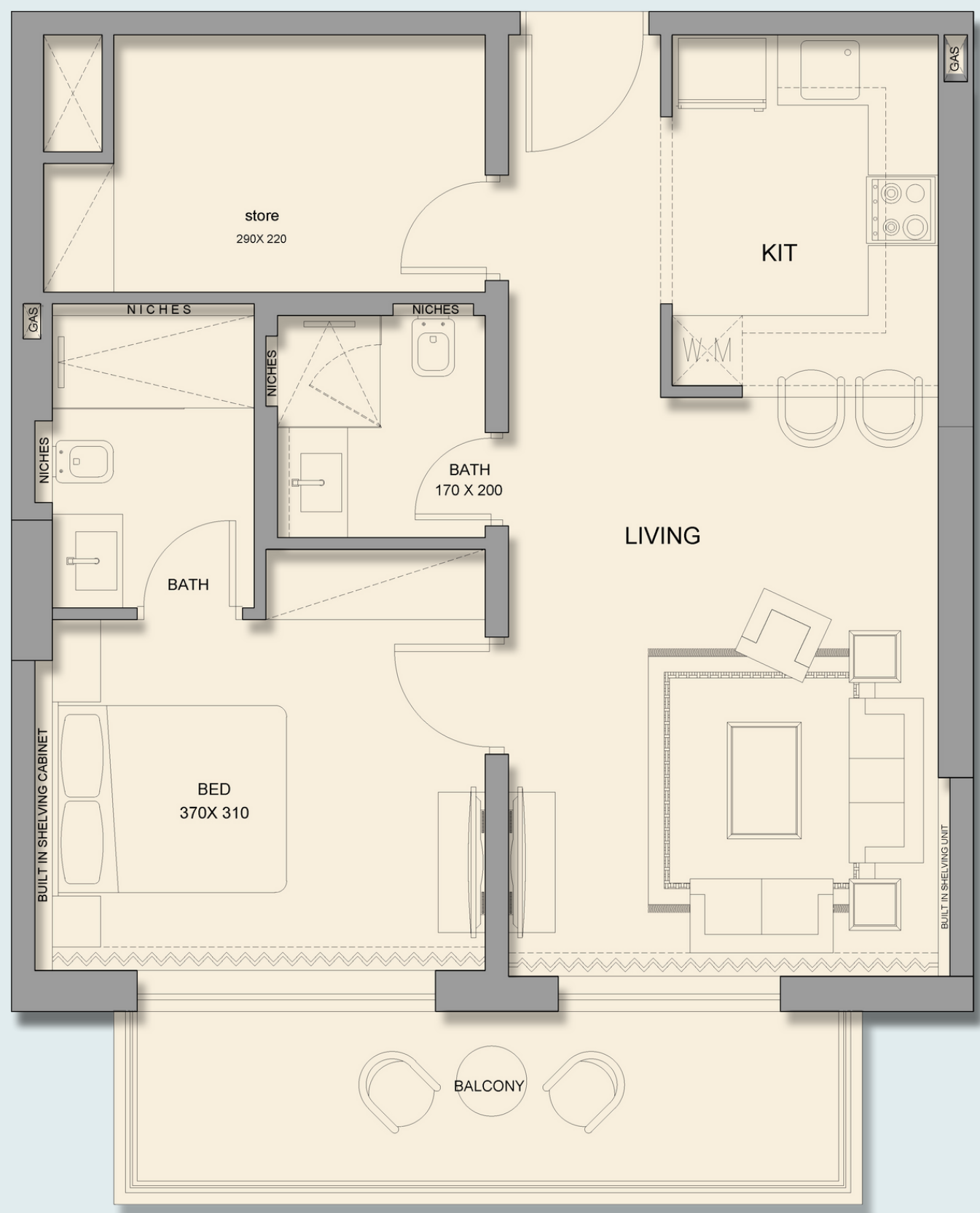
BALCONY AREA:

10.32 SQ.M / 111.08 SQ.F

TOTAL AREA:

74.97 SQ.M / 806.97 SQ.F





806.97 SQ.F

Apartment Plan

1 Bedroom Apartment

Type B

SUITE AREA:

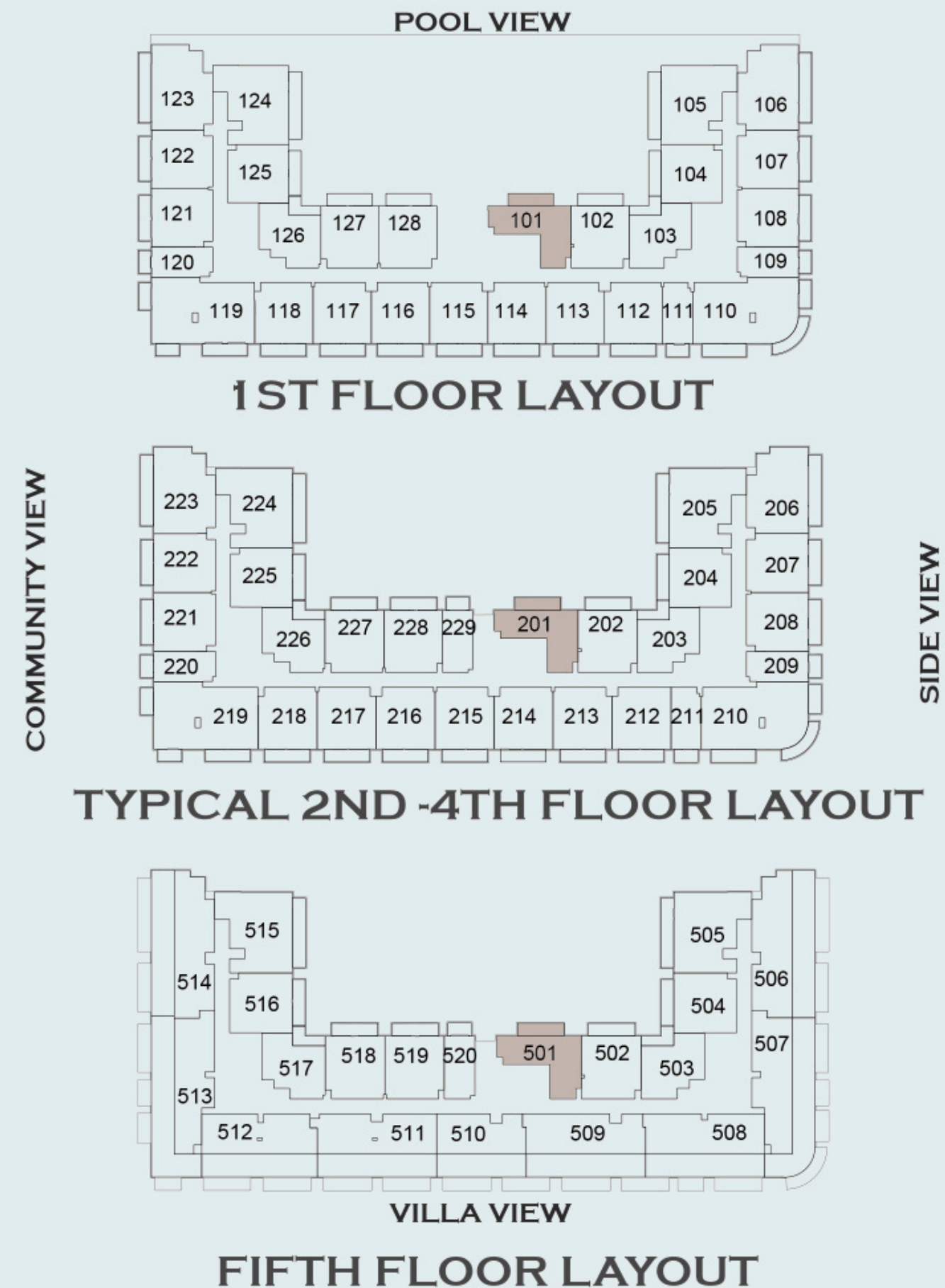
59.40 SQ.M / 639.38 SQ.F

BALCONY AREA:

10.31 SQ.M / 110.98 SQ.F

TOTAL AREA:

69.71 SQ.M / 750.35 SQ.F





750.35 SQ.F

Apartment Plan

1 Bedroom Apartment

Type D

SUITE AREA:

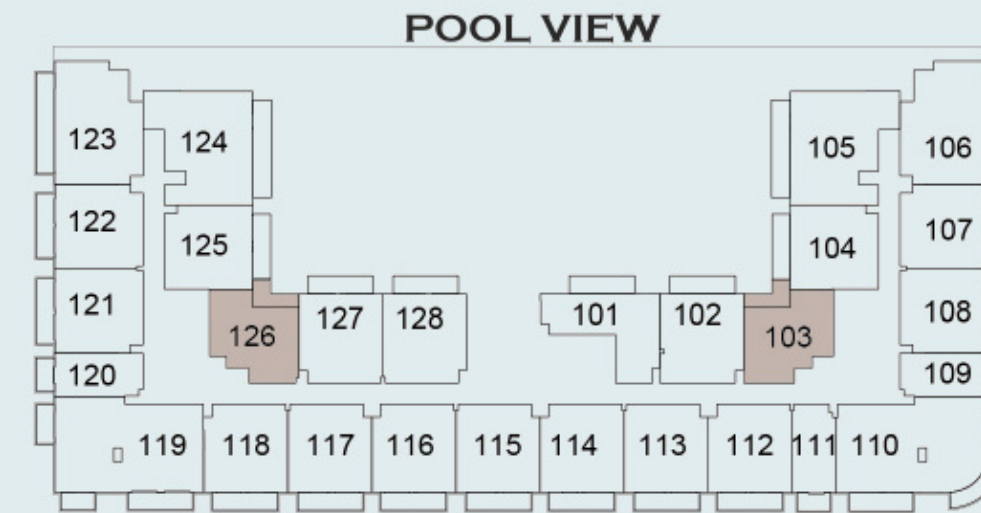
58.48 SQ.M / 629.47 SQ.F

BALCONY AREA:

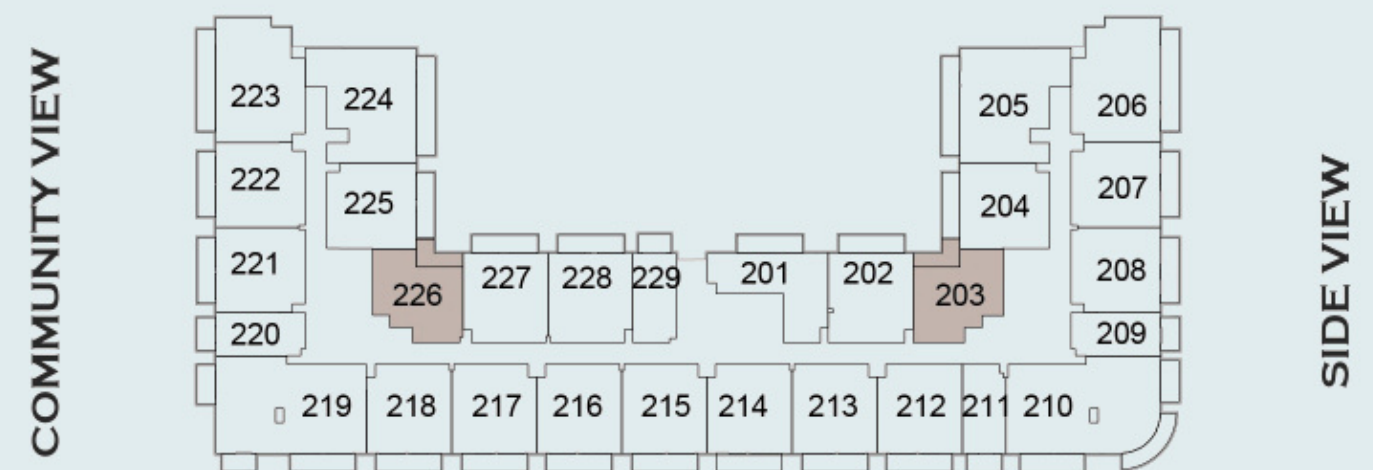
7.79 SQ.M / 83.85 SQ.F

TOTAL AREA:

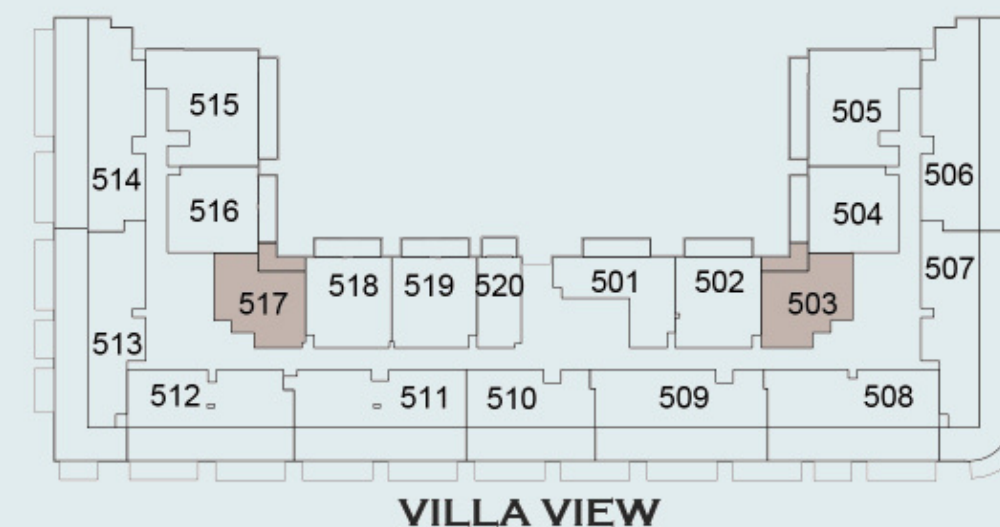
66.27 SQ.M / 713.32 SQ.F



1ST FLOOR LAYOUT



TYPICAL 2ND -4TH FLOOR LAYOUT



FIFTH FLOOR LAYOUT



713.32 SQ.F

Apartment Plan

2 Bedroom Apartment

Type A

SUITE AREA:

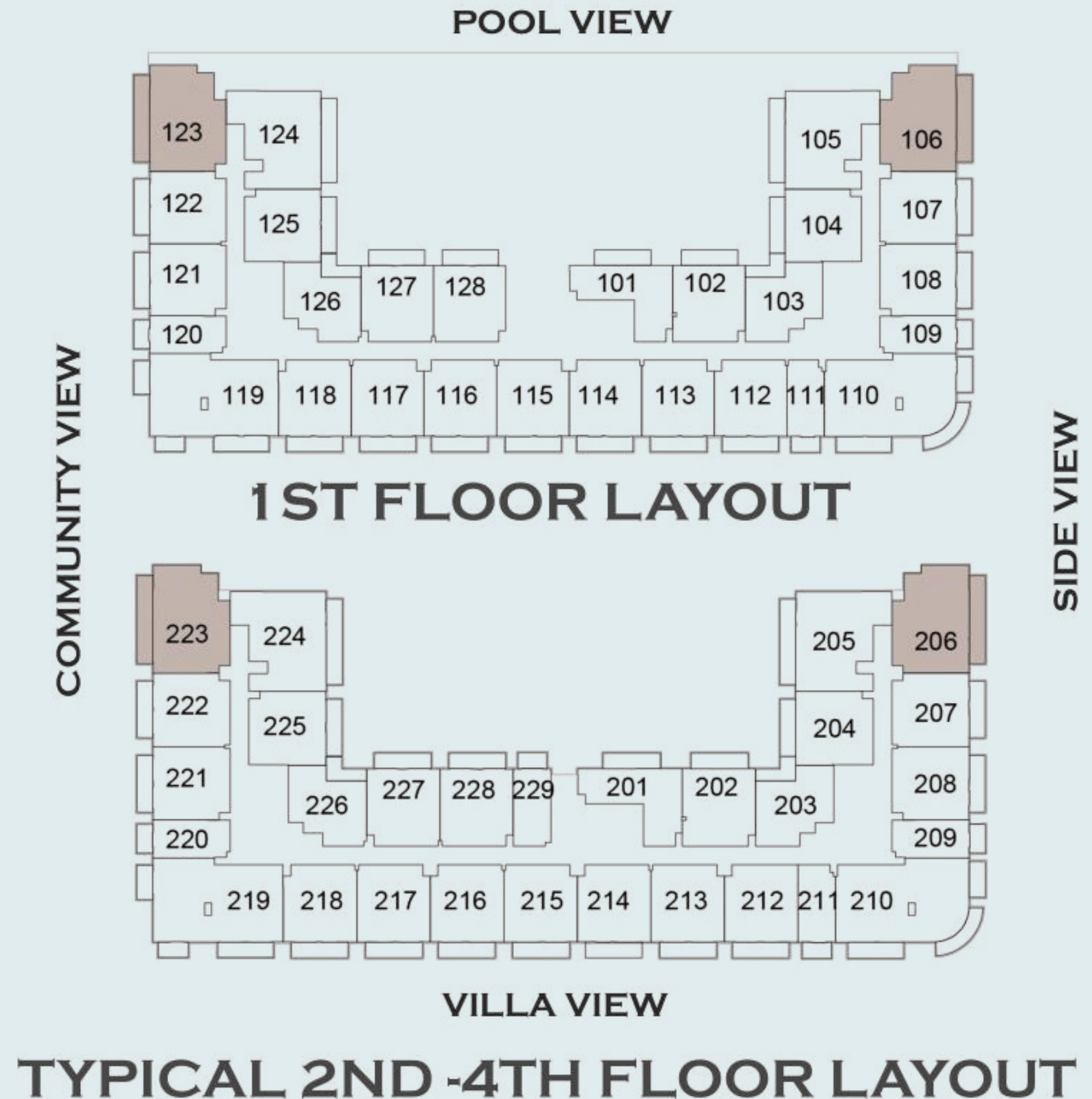
93.27 SQ.M / 1003.95 SQ.F

BALCONY AREA:

17.15 SQ.M / 185.05 SQ.F

TOTAL AREA:

110.42 SQ.M / 1189.0 SQ.F





1189.0 SQ.F

Apartment Plan

3 Bedroom Apartment

Type A

SUITE AREA:

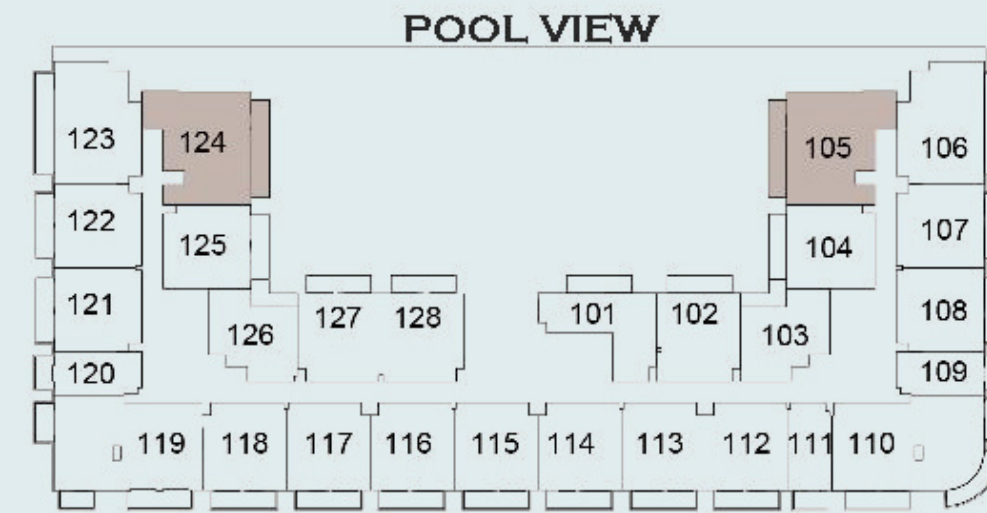
93.87 SQ.M / 1010.41 SQ.F

BALCONY AREA:

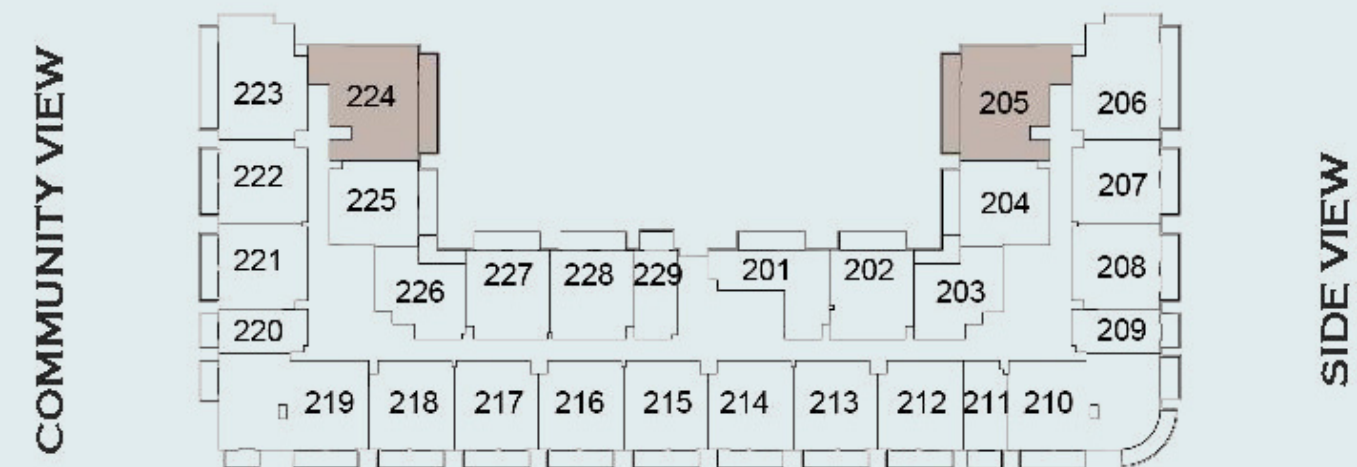
15.91 SQ.M / 171.25 SQ.F

TOTAL AREA:

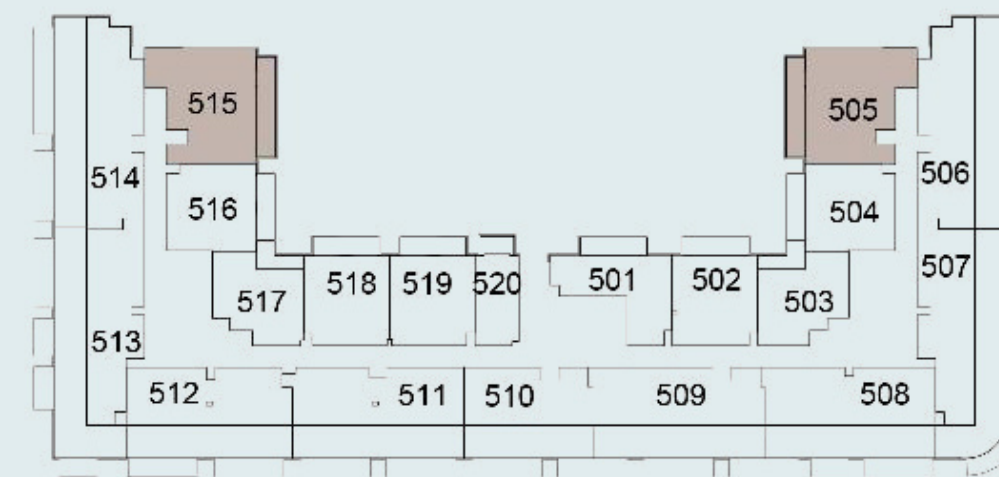
109.78 SQ.M / 1181.66 SQ.F



1ST FLOOR LAYOUT



TYPICAL 2ND -4TH FLOOR LAYOUT



VILLA VIEW

FIFTH FLOOR LAYOUT



1181.66 SQ.F

Apartment Plan

3 Bedroom Apartment

Plus Utility Room

Type B

SUITE AREA:

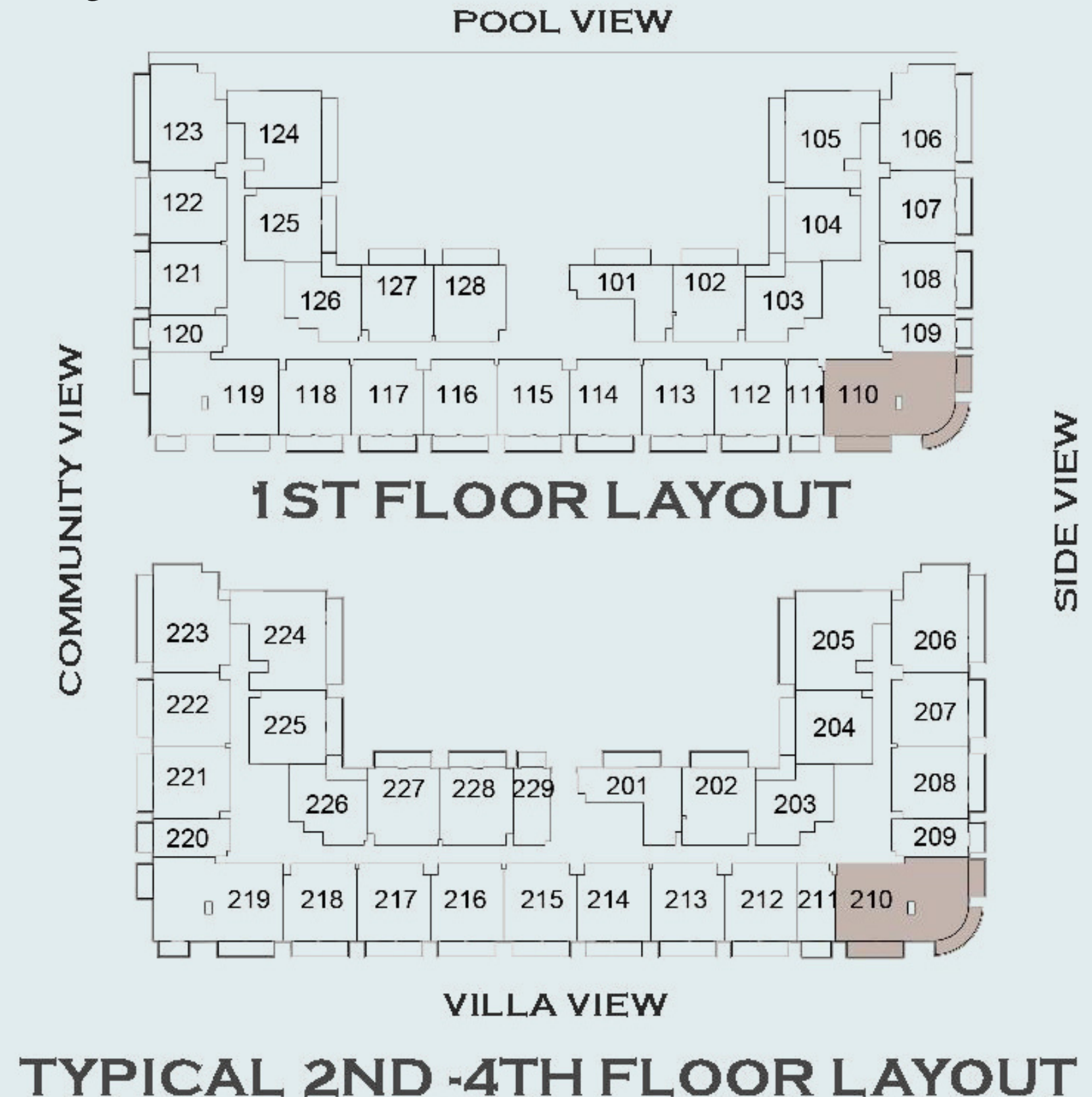
120.02 SQ.M / 1291.88 SQ.F

BALCONY AREA:

27.02 SQ.M / 290.84 SQ.F

TOTAL AREA:

147.04 SQ.M / 1582.73 SQ.F





1582.73 SQ.F

Apartment Plan

3 Bedroom Apartment Plus Utility Room

Type C

SUITE AREA:

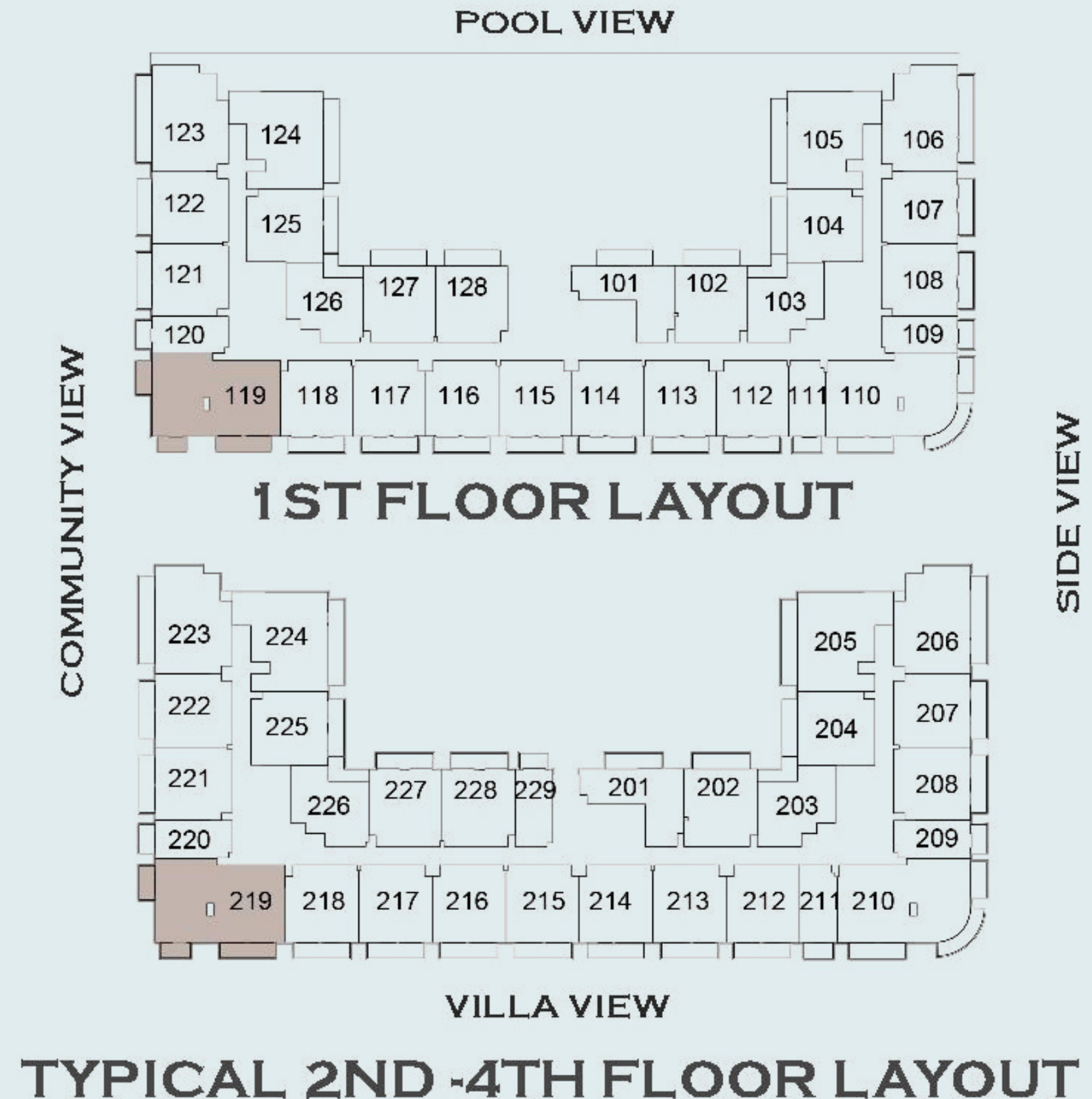
120.27 SQ.M / 1294.58 SQ.F

BALCONY AREA:

21.20 SQ.M / 228.19 SQ.F

TOTAL AREA:

141.47 SQ.M / 1522.77 SQ.F





1522.77 SQ.F

Apartment Plan

Prayer Area



The prayer area at Emerald Vision Tower has been meticulously designed to create an ambiance that is conducive to devotion. The architectural elements, soft lighting, and serene color palette all work together to provide a soothing and contemplative atmosphere. Whether you are a resident or a guest, you will find this space welcoming and accommodating.

Our Islamic prayer area is more than just a designated space; it's a place of tranquility and spiritual reflection. Nestled within the heart of the tower, this prayer area provides a calm and peaceful environment for residents to connect with their faith, seek solace, and offer their daily prayers.

We believe that a home should be a place of spiritual comfort, and we are proud to provide this tranquil oasis for all those who call Emerald Vision Tower their home.

DIY INSTALLATION

EASY TO INSTALL WITH 1 SCREWDRIVER AND 2 SCREWS.



Innovative Security

At Emerald Vision Tower, we understand the importance of security and convenience for our residents. To provide you with the latest in access control technology, we've installed state-of-the-art keypad locks on every apartment door. This innovative feature ensures that you can access your apartment safely and effortlessly, all with the convenience of a personalized access code.



MULTIPLE WAYS TO UNLOCK



Automation Button



Experience effortless living in your Emerald Vision Tower apartment with automation buttons that offer intuitive control over lighting, climate, security, and entertainment. Customize your ambiance for any occasion, promote energy efficiency, enhance security, and even integrate voice command technology. These buttons provide a future-ready, luxurious living experience where you can tailor your environment to your preferences at the touch of a button, ensuring that technology elevates your daily life.

FITNESS

Emerald Vision Tower's gym is a state-of-the-art facility designed for holistic well-being, offering cutting-edge fitness equipment, an inspiring atmosphere with ample natural light, and flexible access hours. This space fosters a sense of community and connection among residents while promoting both physical fitness and mental wellness. It's more than a gym; it's a sanctuary that empowers residents to prioritize their health and happiness within the convenience of their own home.



Swimming Pool at
Emerald Vision Tower



Wellness Sauna
Steam



Direct Access to
Mohammad bin Zayed Road



Neighbourhood
Parks



Library in Reception
Lobby

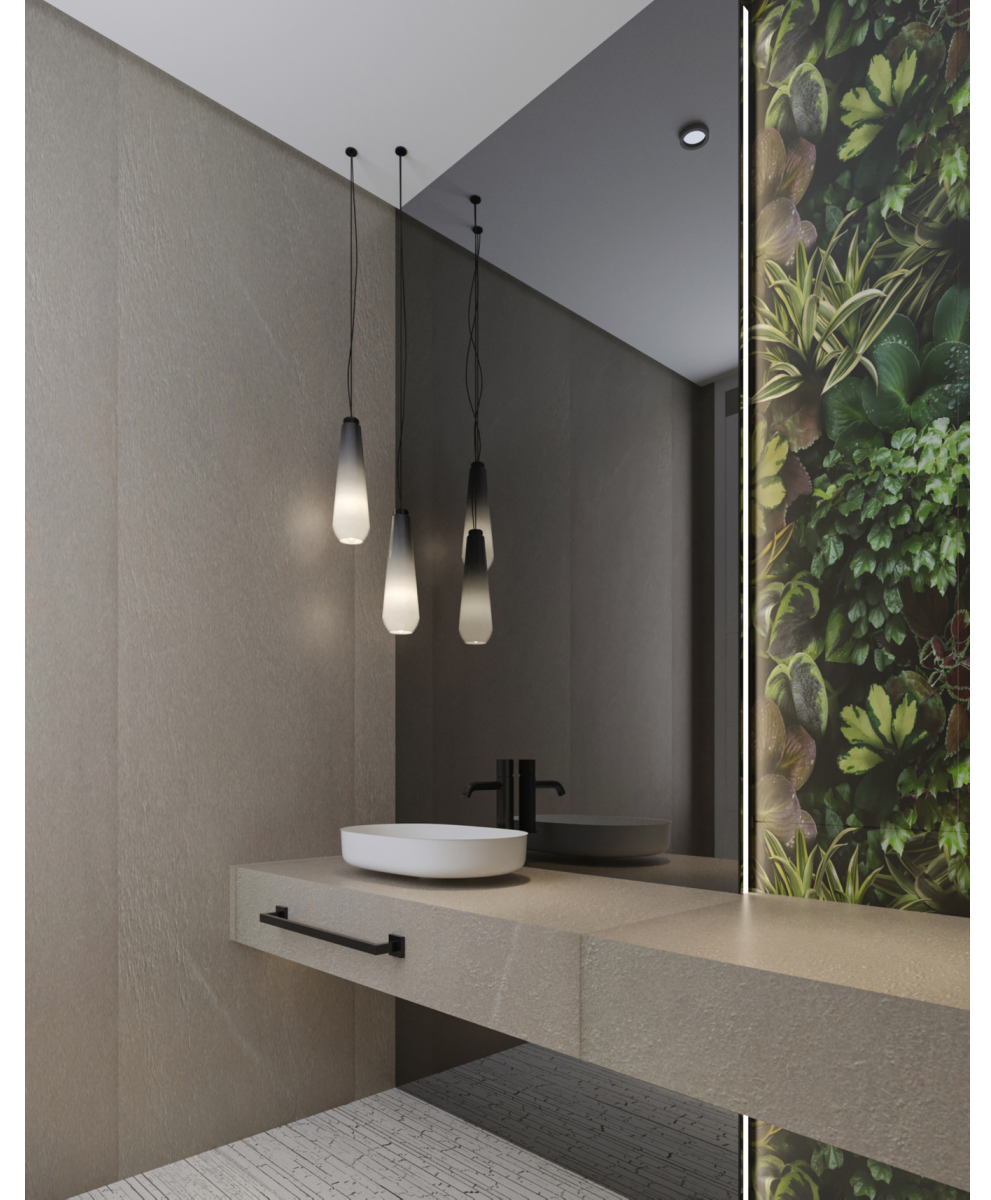


Nearby Licensed
Restaurants



Wellness Steam/Sauna

Emerald Vision Tower offers a dedicated wellness steam and sauna facility within the apartment complex, promoting relaxation and holistic health. The space boasts a calming design with customizable temperature and humidity settings, enabling residents to enjoy the benefits of detoxification, skin rejuvenation, stress reduction, and muscle tension relief. This facility provides a convenient and luxurious retreat for residents to prioritize their well-being, right at home.



Kids Play Area

Emerald Vision Tower's kids' play area is a safe and imaginative space designed to entertain and educate young residents. The vibrant and secure environment features age-appropriate play equipment, encourages cognitive and physical development, and fosters connections among families, creating a sense of community. With safety and year-round accessibility in mind, this play area ensures that children of all ages can explore, learn, and have endless fun, right within their home.



Outdoor BBQ Area

Emerald Vision Tower's outdoor BBQ area is a stylish, family-friendly space that allows residents to savor the pleasures of outdoor dining. With modern elegance, well-maintained grilling equipment, and a welcoming atmosphere, it's not just a place to cook but also a social hub for connecting with neighbors and friends. Offering year-round accessibility and scenic views, this space is ideal for creating memorable moments through outdoor feasts and celebrations, making it a culinary haven for residents of all ages.



WHY INVEST IN Dubai



Tax-Free
Environment



Booming
Economy



Safe and
Stable City



Robust Tourism
Industry



Strong Rental
Market



Competitive
Property Prices



Strong Return on
Investment



World-Class
Developers

