



MANAM

PRIME

DREAM IT, OWN IT



•Introduction

- Introducing a cutting-edge architectural marvel, this modern 4-story building stands as a testament to contemporary design and functionality. Rising gracefully against the skyline, its sleek facade harmonizes with innovative structural elements. The exterior seamlessly integrates energy-efficient materials, reflecting a commitment to sustainability. Inside, each floor is meticulously planned to optimize space utilization and cater to diverse needs. Smart technologies are woven into the fabric, offering automation for climate control, security, and lighting. With a blend of form and function, this structure not only captivates aesthetically but also exemplifies the epitome of urban living in the 21st century.

Location

- 35 Mins
Dubai International Airport
- 12 Mins
Al Maktoum International Airport
- 20 Mins
Mall of the Emirates
- 30 Mins
Mall of Dubai
- 5 Mins
Expo 2020 Dubai



MANAM

PRIME

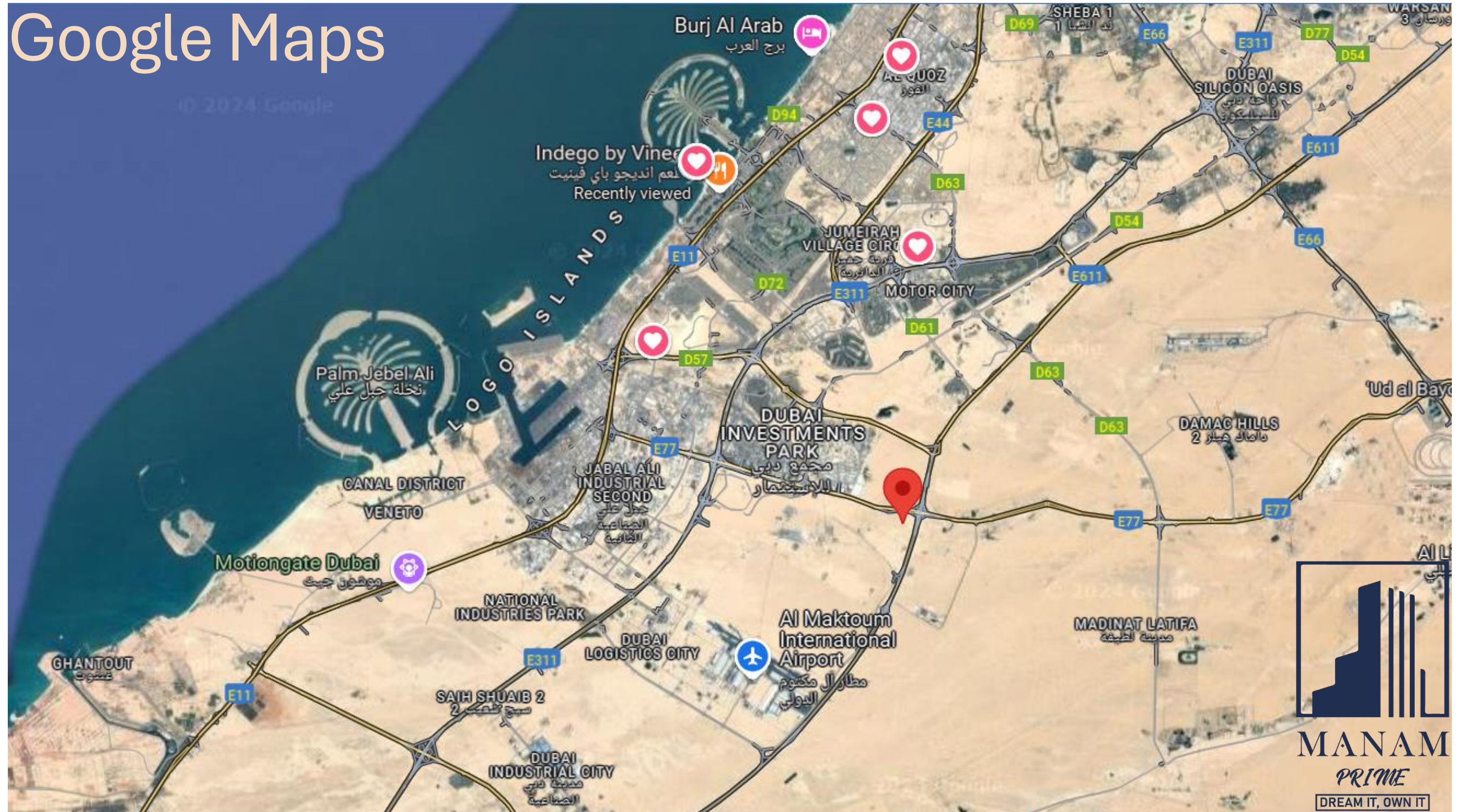
DREAM IT, OWN IT



Plot No. RF37
Dubai South



Google Maps





MANAM
PRIME
DREAM IT, OWN IT

Site Map



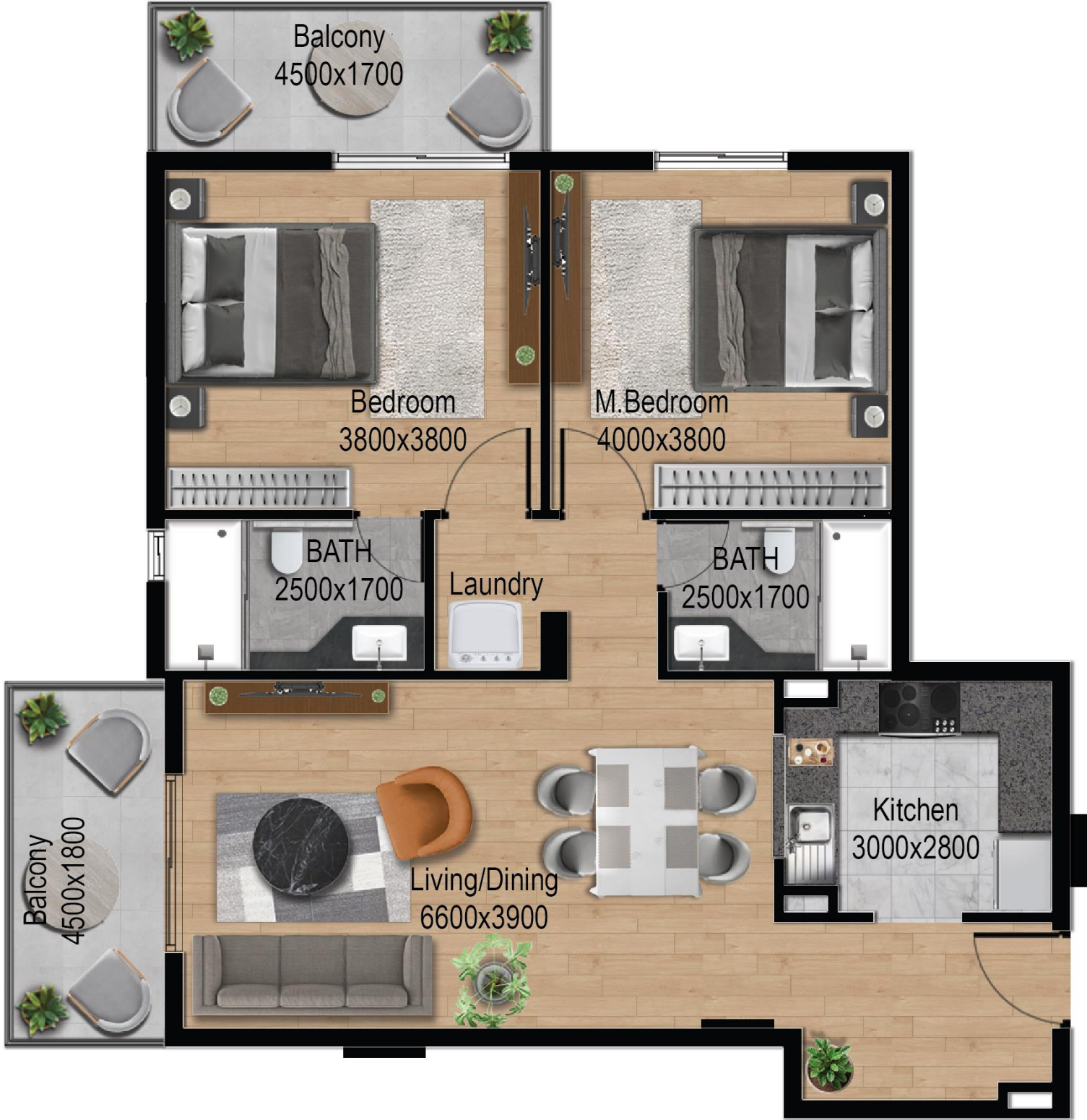


Floor Plans



Floor Layout

2 Bedroom, Series 1,4



Suite Area (SQFT)	Balcony Area (SQFT)	Total Area (SQFT)
963.8	160.7	1124.5

1 Bedroom, Series 2,3



Suite Area (SQFT)	Balcony Area (SQFT)	Total Area (SQFT)
604.93	100.42	705.35

1 Bedroom, Series 5,10



Suite Area (SQFT)	Balcony Area (SQFT)	Total Area (SQFT)
590.83	86	676.83

2 Bedroom, Series 6,9



Suite Area (SQFT)	Balcony Area (SQFT)	Total Area (SQFT)
953	115.28	1068.31

2 Bedroom, Series 7,8



Suite Area (SQFT)	Balcony Area (SQFT)	Total Area (SQFT)
898.25	181.26	1079.51

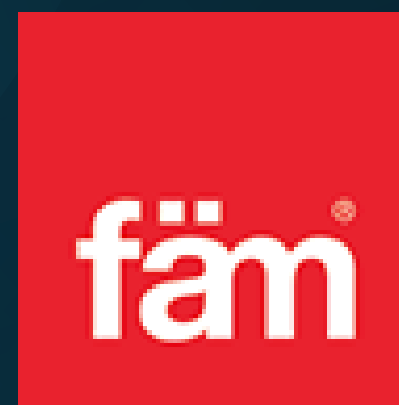
Payment Plan:



- **Booking Amount: 20% on the booking day + DLD fee and Admin fee.**
- **Second Installment: 20% one month from booking.**
- **Handover Installment: 20% on handover.**
- **PHPP 1st Installment: 10% six (6) months post-handover.**
- **PHPP 2nd Installment: 10% twelve (12) months post-handover.**
- **PHPP 3rd Installment: 10% eighteen (18) months post-handover.**
- **PHPP 4th Installment: 10% twenty-four (24) months post-handover.**



Contact us for
more details...



Properties