

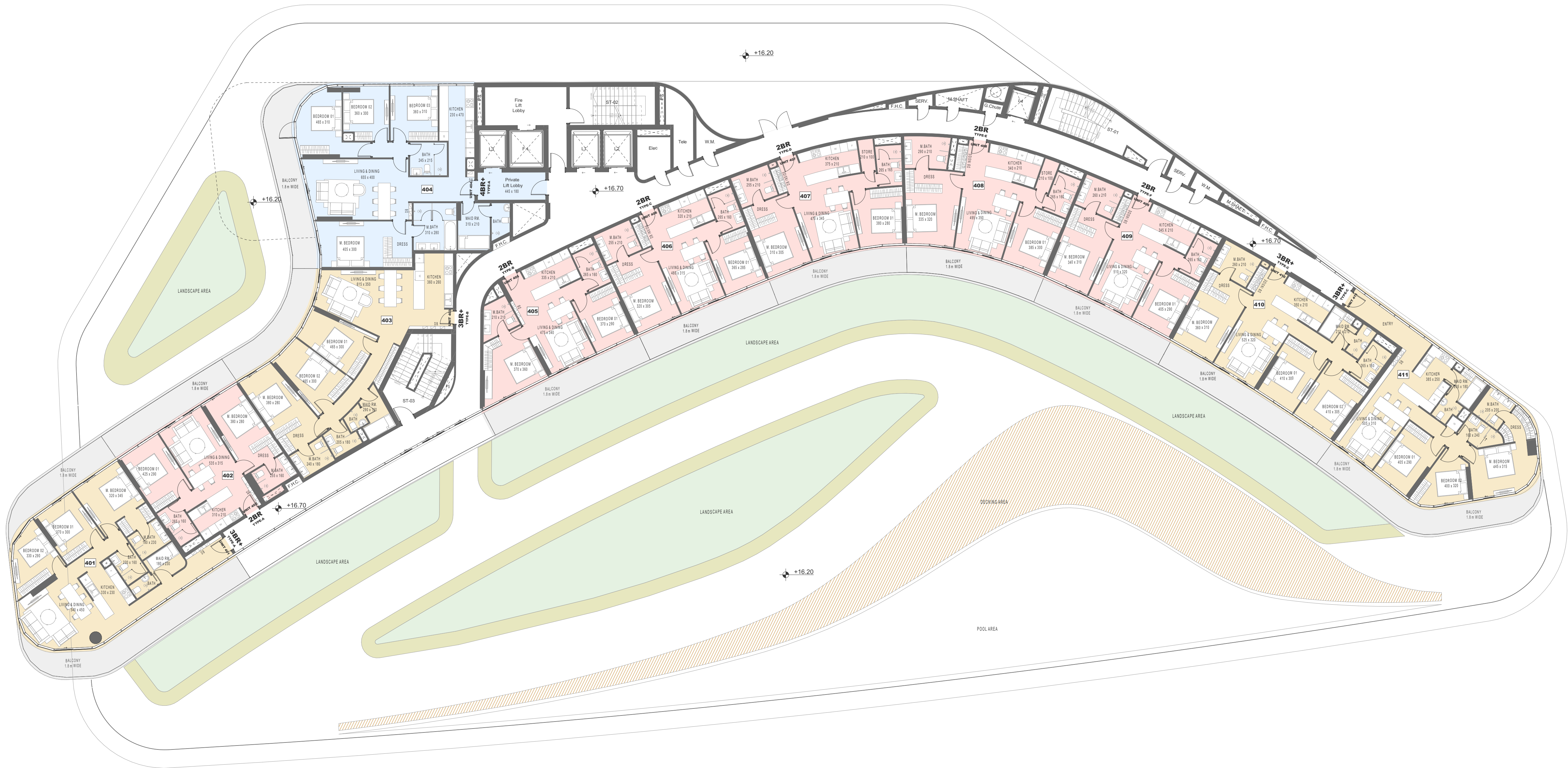
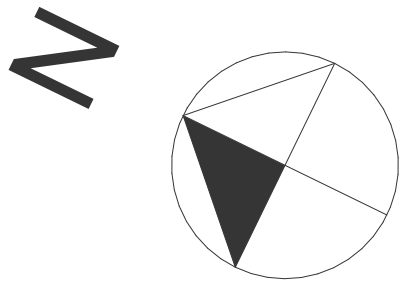
# MARLIN 2 TOWER

---

Revision 01

17-02-2025

Last Revision : Rev\_00 / Sent on 12-02-2025



1 4th FLOOR  
A.01.19 SCALE 1:150

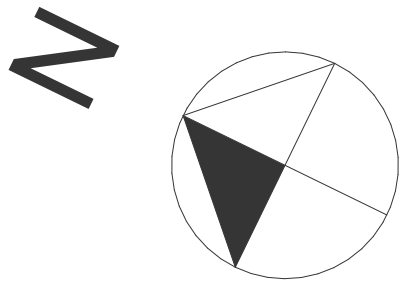
# MARLIN 2 TOWER

17-02-2025 Revision 01

All drawings and dimensions are approximate. Drawings are not to scale and are subject to change without notice. The developer reserves the right to make revisions. The units are measured at typical floors in the building and columns may vary in size depending on the floor level. The furnishing and accessories shown are for representation only. The availability, length and width of the balcony varies depending on which floor and which orientation the unit is located within the building. There will be slight differences in the internal areas between the same unit types depending on the shaft sizes that go through the units.

- 2 BEDROOM UNITS
- 3 BEDROOM UNITS
- 4 BEDROOM UNITS





1 TYPICAL FLOOR (5th to 17th)  
A.01.20 SCALE 1:150

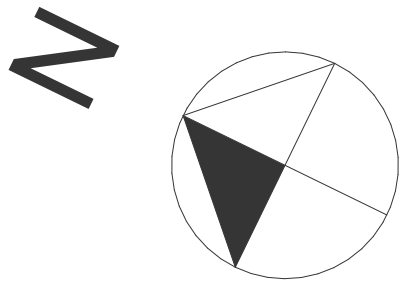
# MARLIN 2 TOWER

17-02-2025 Revision 01

All drawings and dimensions are approximate. Drawings are not to scale and are subject to change without notice. The developer reserves the right to make revisions. The units are measured at typical floors in the building and columns may vary in size depending on the floor level. The furnishing and accessories shown are for representation only. The availability, length and width of the balcony varies depending on which floor and which orientation the unit is located within the building. There will be slight differences in the internal areas between the same unit types depending on the shaft sizes that go through the units.

- 2 BEDROOM UNITS
- 3 BEDROOM UNITS
- 4 BEDROOM UNITS





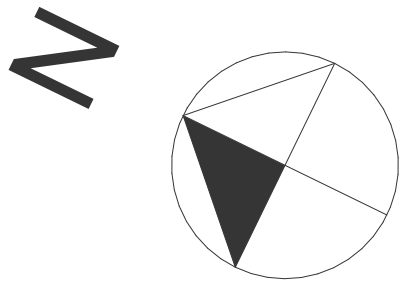
1 18th FLOOR  
A.01.21 SCALE 1:150

# MARLIN 2 TOWER

17-02-2025 Revision 01

All drawings and dimensions are approximate. Drawings are not to scale and are subject to change without notice. The developer reserves the right to make revisions. The units are measured at typical floors in the building and columns may vary in size depending on the floor level. The furnishing and accessories shown are for representation only. The availability, length and width of the balcony varies depending on which floor and which orientation the unit is located within the building. There will be slight differences in the internal areas between the same unit types depending on the shaft sizes that go through the units.

- 2 BEDROOM UNITS
- 3 BEDROOM UNITS
- 4 BEDROOM UNITS



1 19th FLOOR  
A.01.22 SCALE 1:150

# MARLIN 2 TOWER

17-02-2025 Revision 01

- 2 BEDROOM UNITS
- 3 BEDROOM UNITS
- 4 BEDROOM UNITS

All drawings and dimensions are approximate. Drawings are not to scale and are subject to change without notice. The developer reserves the right to make revisions. The units are measured at typical floors in the building and columns may vary in size depending on the floor level. The furnishing and accessories shown are for representation only. The availability, length and width of the balcony varies depending on which floor and which orientation the unit is located within the building. There will be slight differences in the internal areas between the same unit types depending on the shaft sizes that go through the units.