

# ASPIRZ

BY **DANUBE**

FLOOR PLANS - OFFICES

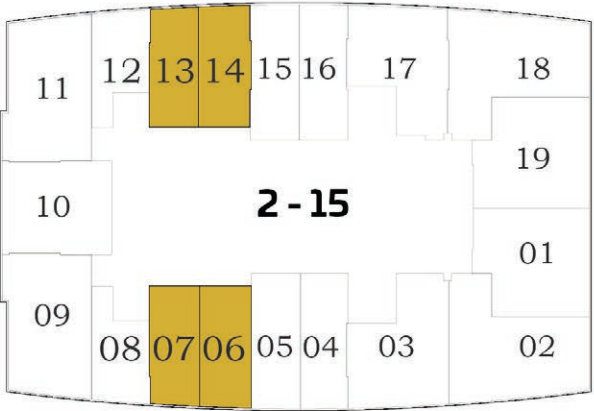




# STANDARD OFFICE - A



Floor



**AREA (Sq.Ft)**

Office  
**349 to 381**

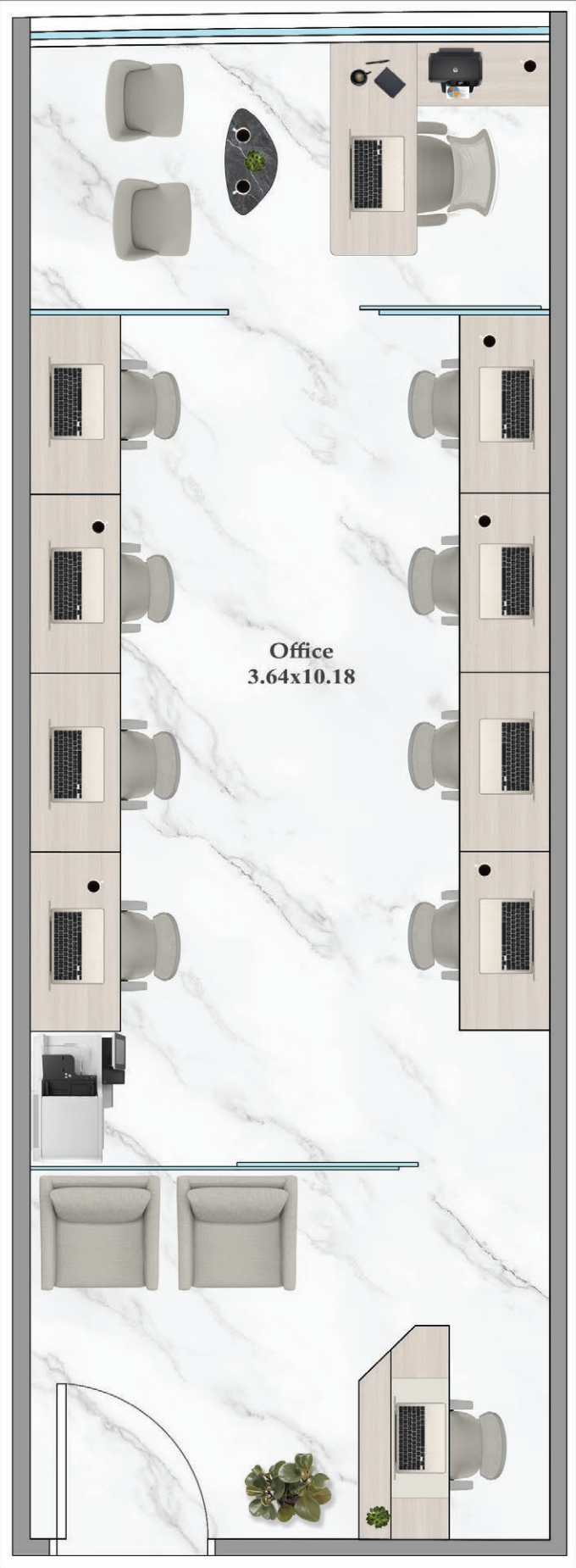
## OFFICE FEATURES :

- ✓ Manager's Cabin
- ✓ 10 -12 Workstations
- ✓ Reception
- ✓ Visitor's Zone

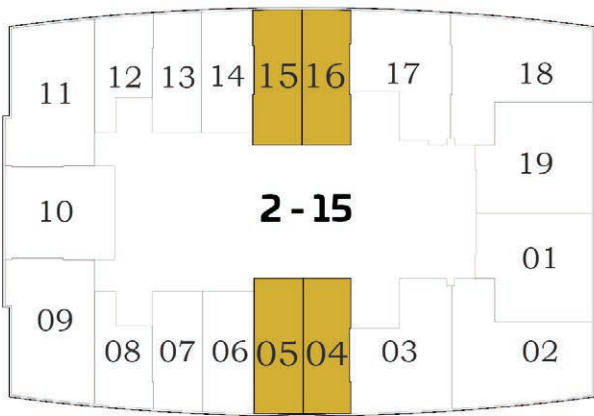
## ASPIRZ FEATURES :

- ✓ Boardroom
- ✓ Restroom
- ✓ Reception
- ✓ 15+ Premium Amenities
- ✓ Valet Services
- ✓ Shuttle to Metro

# STANDARD OFFICE - B



Floor



## AREA (Sq.Ft)

Office  
383 to 401

## OFFICE FEATURES :

- ✓ Manager's Cabin
- ✓ 10 - 12 Workstations
- ✓ Reception
- ✓ Visitor's Zone

## ASPIRZ FEATURES :

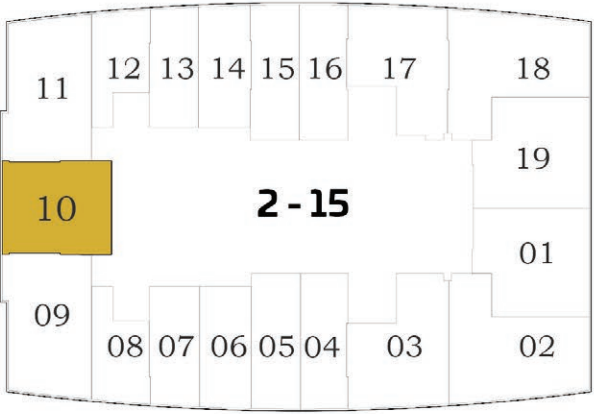
- ✓ Boardroom
- ✓ Restroom
- ✓ Reception
- ✓ 15+ Premium Amenities
- ✓ Valet Services
- ✓ Shuttle to Metro



# EXECUTIVE OFFICE - A



Floor



## AREA (Sq.Ft)

Office  
**624**

## OFFICE FEATURES :

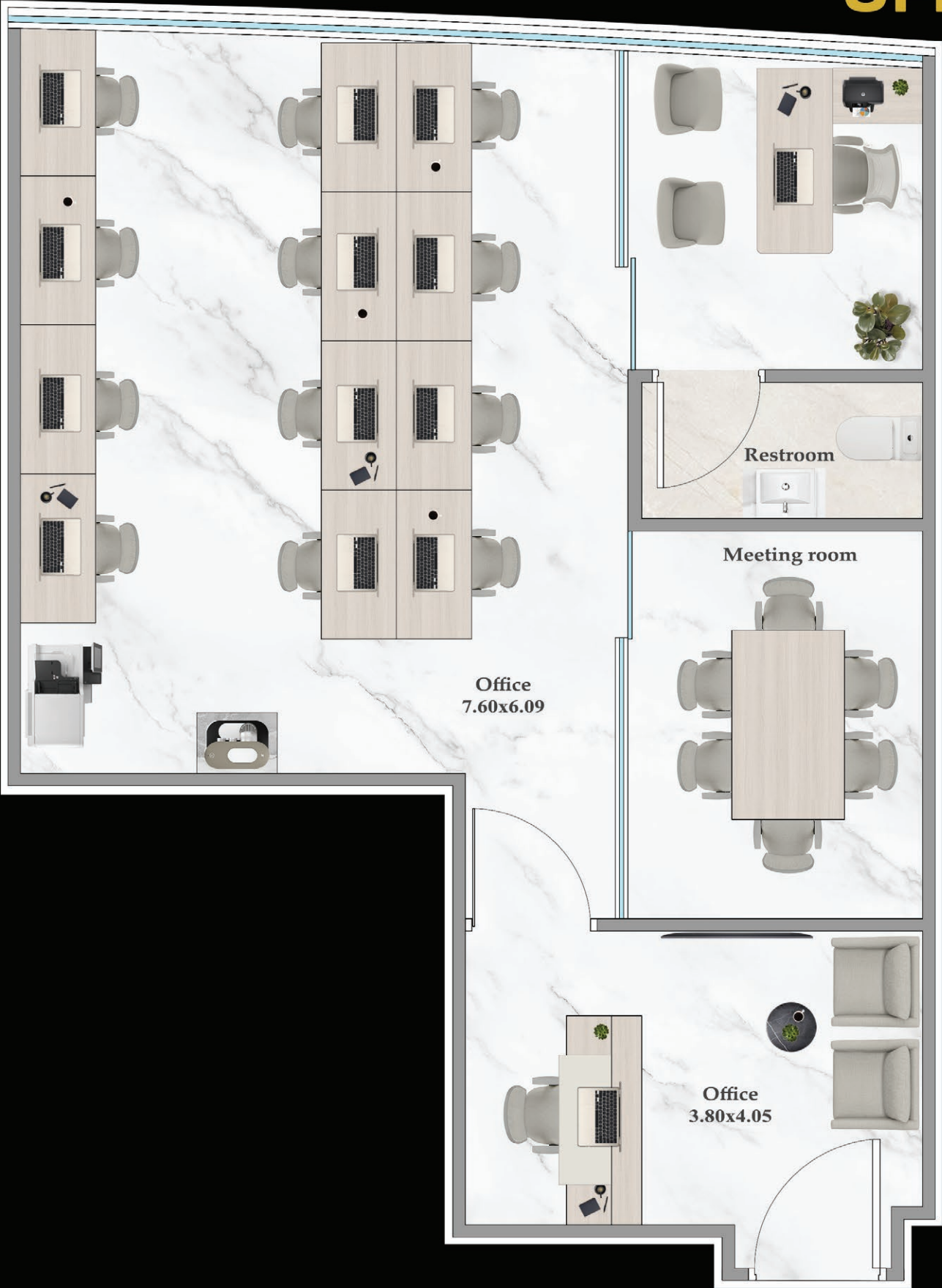
- ✓ Manager's Cabin
- ✓ 18 - 20 Workstations
- ✓ Reception
- ✓ Visitor's Zone
- ✓ Coffee Station
- ✓ Restroom

## ASPIRZ FEATURES :

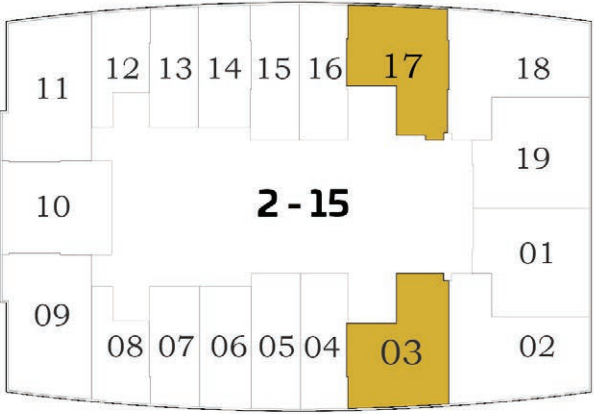
- ✓ Boardroom
- ✓ Restroom
- ✓ Reception
- ✓ 15+ Premium Amenities
- ✓ Valet Services
- ✓ Shuttle to Metro



# EXECUTIVE OFFICE - B



Floor



## AREA (Sq.Ft)

Office  
637 to 664

## OFFICE FEATURES :

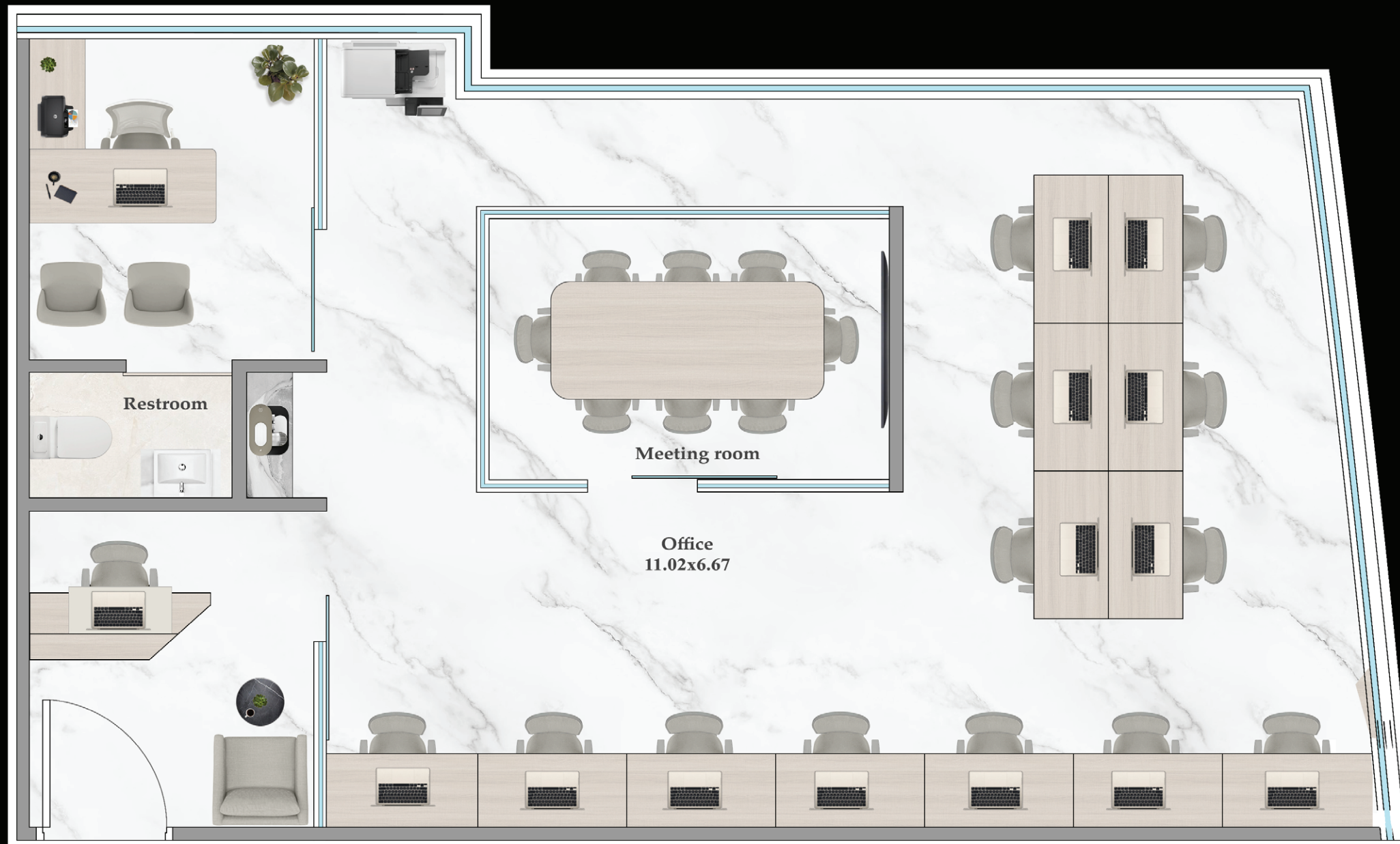
- ☑ Manager's Cabin
- ☑ 14 - 16 Workstations
- ☑ Meeting Room
- ☑ Reception
- ☑ Visitor's Zone
- ☑ Coffee Station
- ☑ Restroom

## ASPIRZ FEATURES :

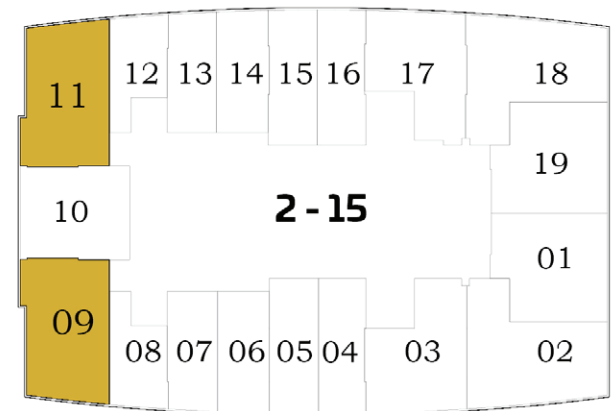
- ☑ Boardroom
- ☑ Restroom
- ☑ Reception
- ☑ 15+ Premium Amenities
- ☑ Valet Services
- ☑ Shuttle to Metro



# PREMIER OFFICE - A



Floor



## AREA (Sq.Ft)

Office  
726 to 736

## OFFICE FEATURES :

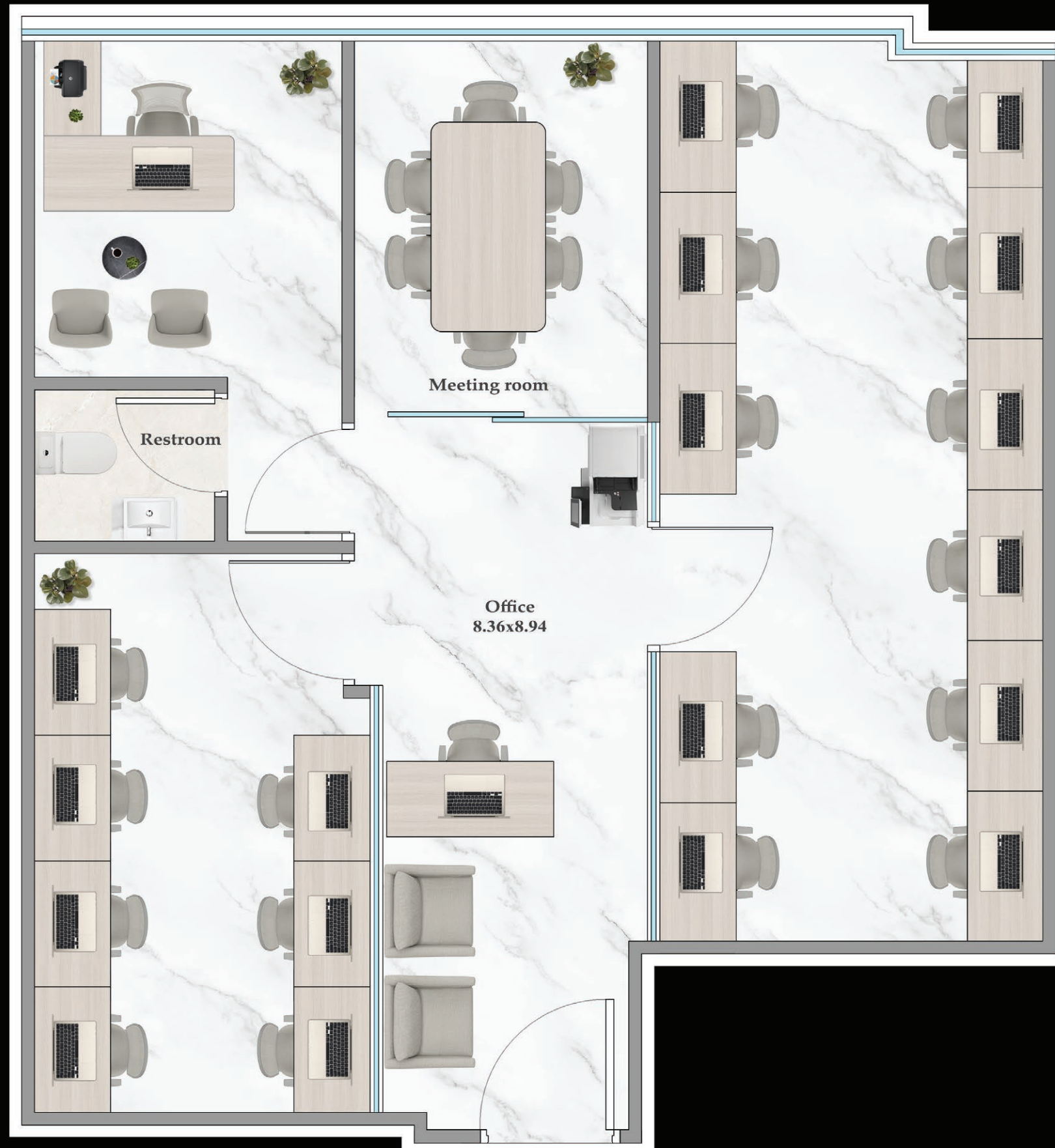
- ☒ Manager's Cabin
- ☒ 15 - 17 Workstations
- ☒ Meeting Room
- ☒ Reception
- ☒ Visitor's Zone
- ☒ Coffee Station
- ☒ Restroom

## ASPIRZ FEATURES :

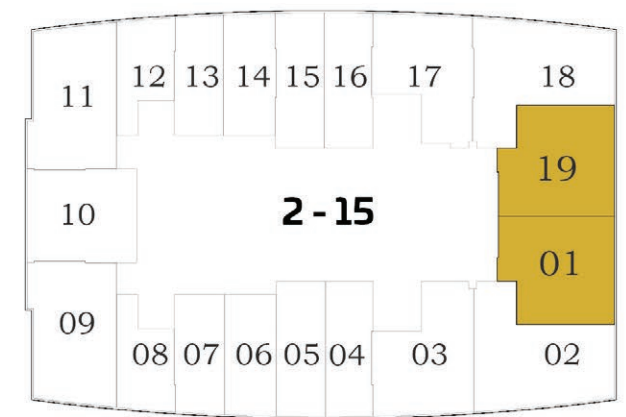
- ☒ Boardroom
- ☒ Restroom
- ☒ Reception
- ☒ 15+ Premium Amenities
- ☒ Valet Services
- ☒ Shuttle to Metro



# PREMIER OFFICE - B



Floor



**AREA (Sq.Ft)**

Office  
**727 to 747**

## OFFICE FEATURES :

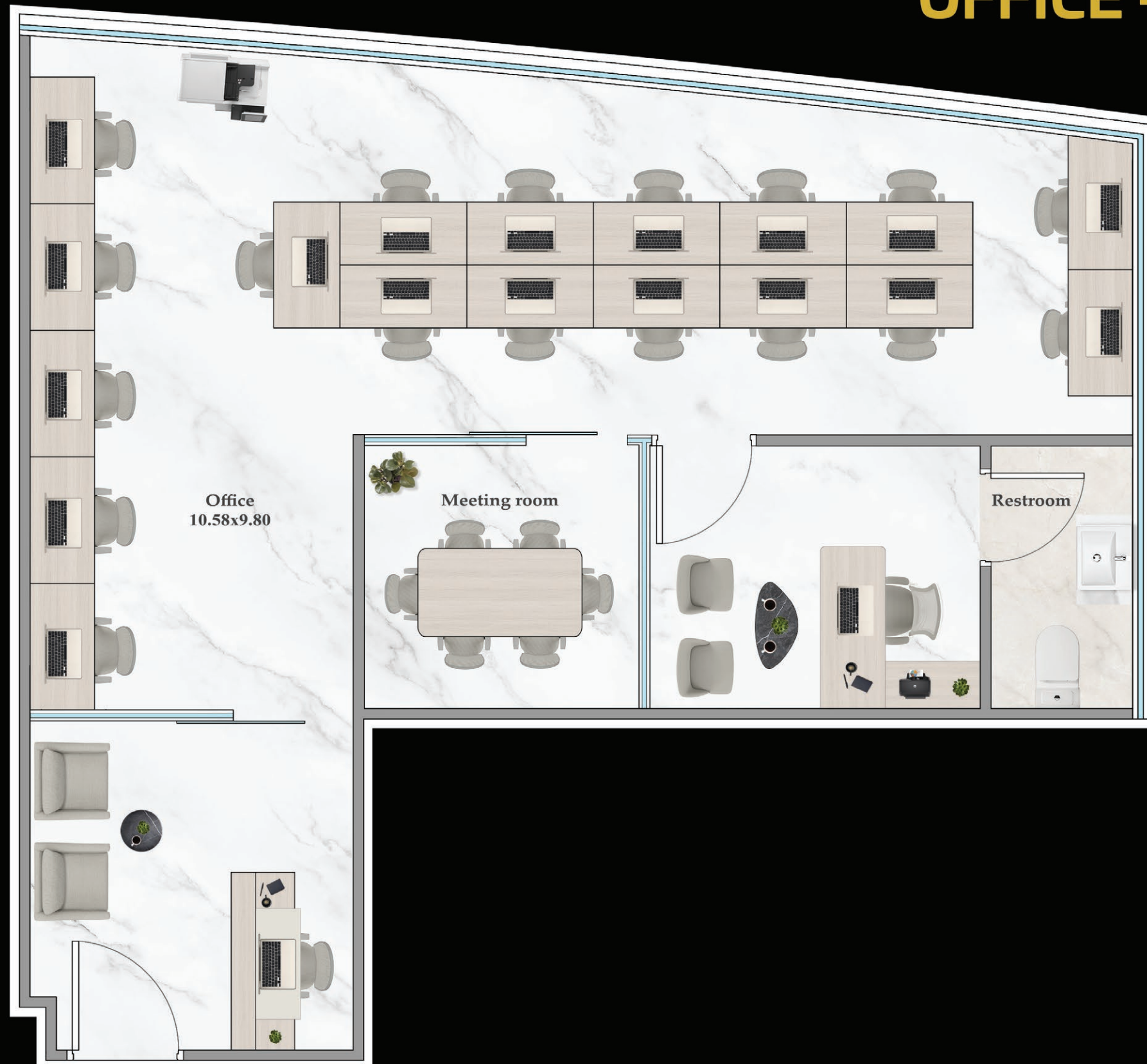
- ☑ Manager's Cabin
- ☑ 20 - 22 Workstations
- ☑ Meeting Room
- ☑ Reception
- ☑ Visitor's Zone
- ☑ Restroom

## ASPIRZ FEATURES :

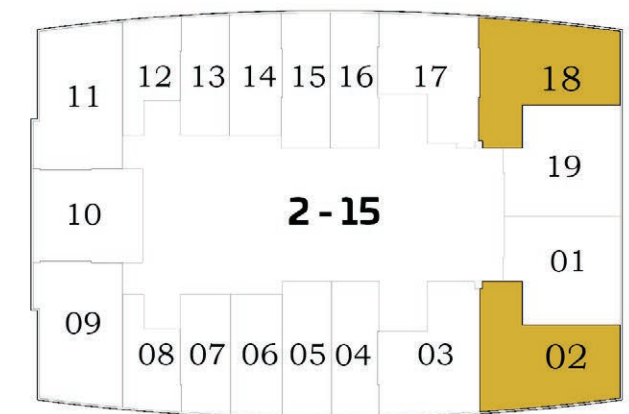
- ☑ Boardroom
- ☑ Restroom
- ☑ Reception
- ☑ 15+ Premium Amenities
- ☑ Valet Services
- ☑ Shuttle to Metro



# PREMIER OFFICE - C



Floor



**AREA (Sq.Ft)**

Office  
**794 to 801**

## OFFICE FEATURES :

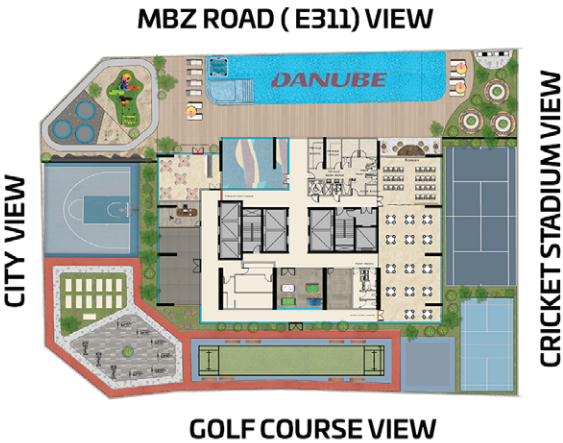
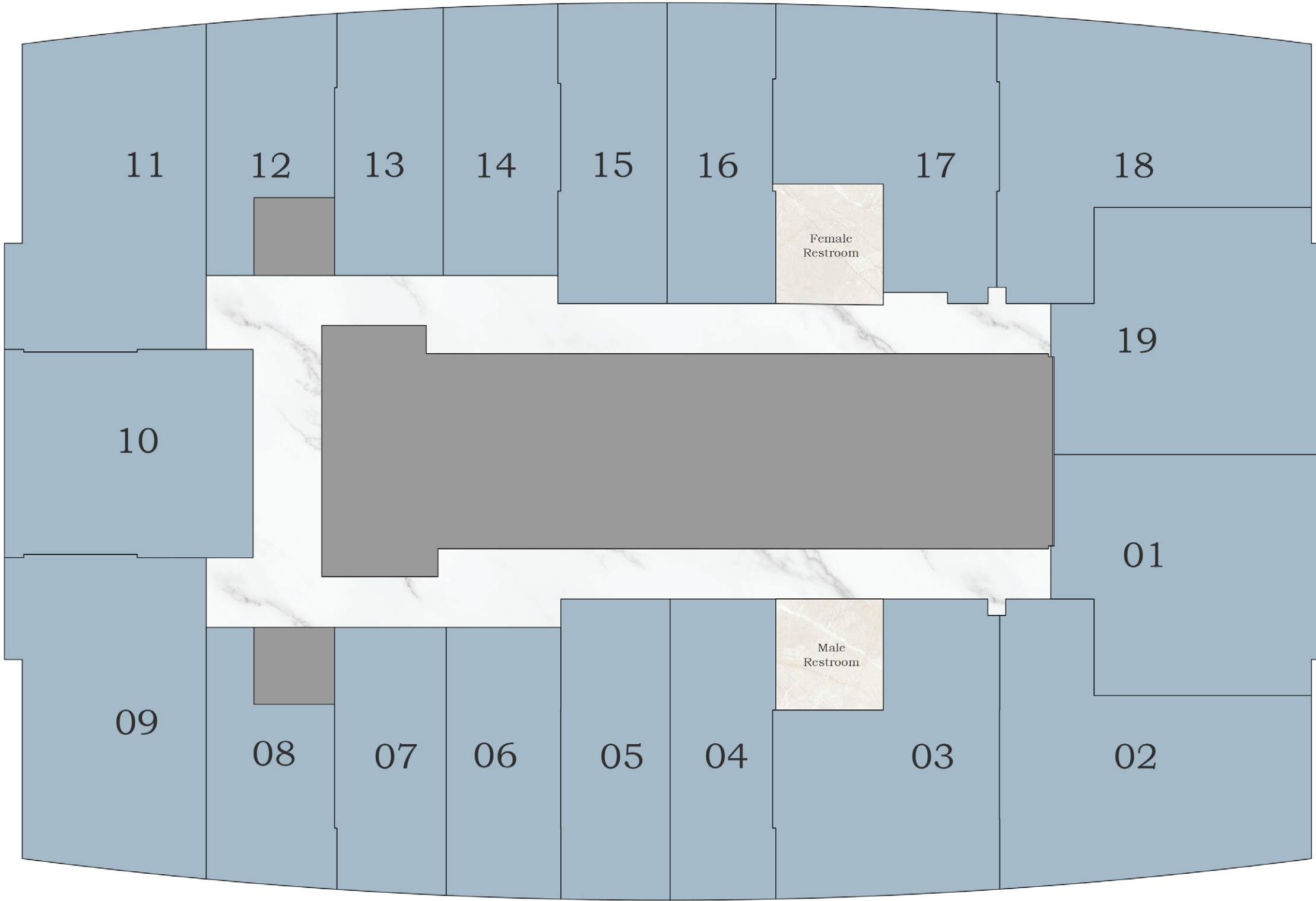
- ☒ Manager's Cabin
- ☒ 20 - 22 Workstations
- ☒ Meeting Room
- ☒ Reception
- ☒ Visitor's Zone
- ☒ Restroom

## ASPIRZ FEATURES :

- ☒ Boardroom
- ☒ Restroom
- ☒ Reception
- ☒ 15+ Premium Amenities
- ☒ Valet Services
- ☒ Shuttle to Metro



FLOOR 2ND - 15TH





# AMENITIES PLAN

## HOTEL APARTMENT AMENITIES

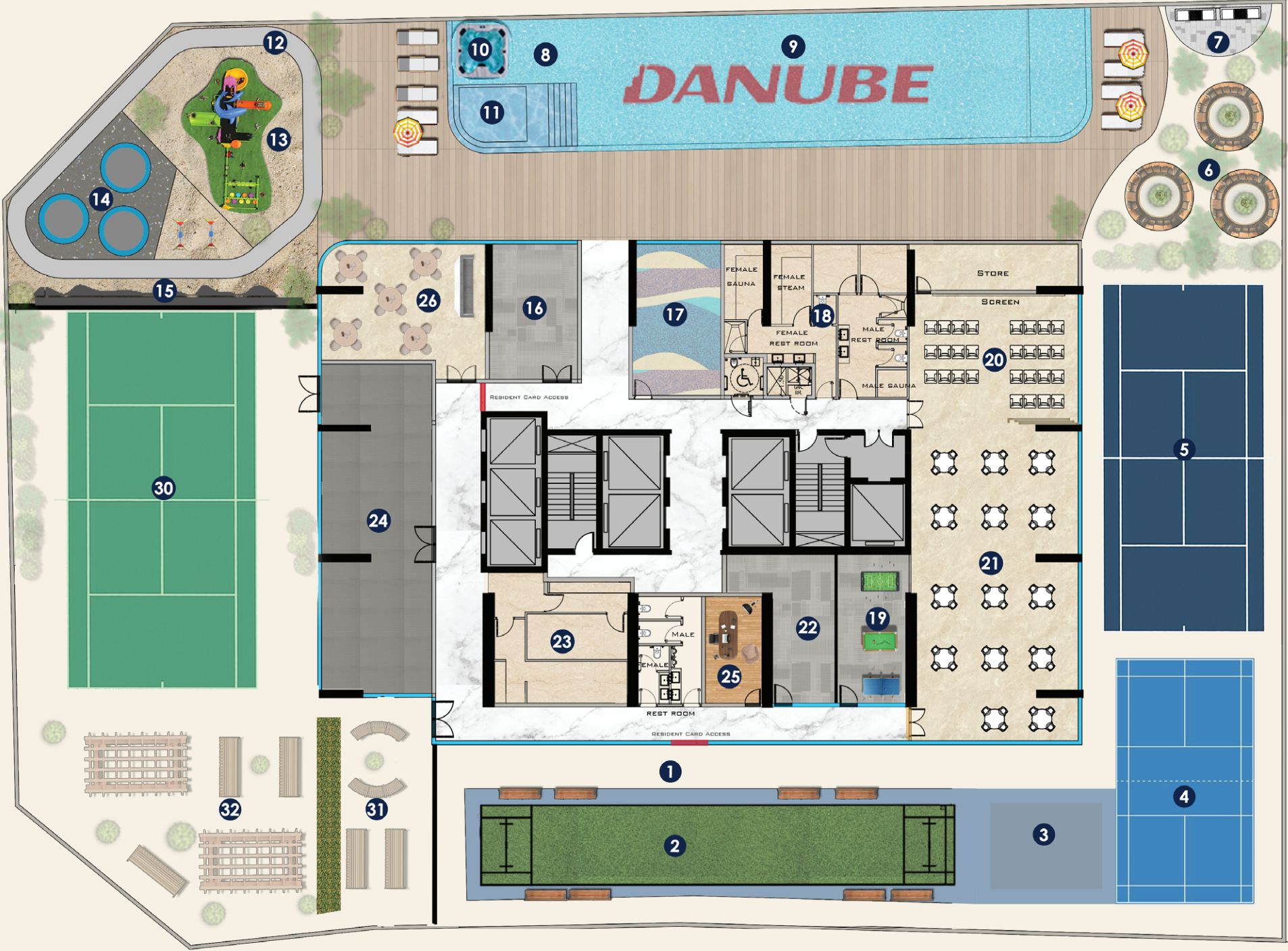
1. Jogging Track
2. Cricket Court
3. Multi-Purpose Training Space
4. Badminton Court
5. Padel Court
6. Family Seating/Cabana
7. BBQ Deck
8. Aquatic Gym
9. Swimming Pool
10. Jacuzzi
11. Kid's Pool
12. Kid's Cycling Track
13. Kid's Play area
14. Trampoline
15. Kid's Wall Climbing
16. Zumba Studio cum Yoga
17. Kid's Nursery
18. Steam and Sauna

## OFFICE AND HOTEL APARTMENT AMENITIES

19. Indoor Games (Air Hockey/ Foosball/ Snooker/ Tabletennis)
20. Hitec Meeting Theatre/ Cinema
21. Party Hall cum Conference Hall
22. Business Center
23. Prayer Hall
24. Gym-Male & Female
25. Pod Cast
26. Cafe
27. Drone Delivery Zone - GF
28. Electric Vehicle - GF
29. E-Scooter/ Bicycle Parking - GF

## OFFICE AMENITIES

30. Multipurpose Court
31. Cigar Zone (garden)
32. Open Garden







1. All information, materials, plans and amenities are approximate and provided for illustrative purposes only. The Developer reserves the right to make revisions to the floor plans and any features, materials, dimensions, drawings, and amenities of the project without notice.
2. Units areas, actual dimensions, layout, location, specifications of balcony, door, wardrobe or other fixtures may vary floor to floor and between units and are subject to revision by the Developer.
3. Furniture and electric devices will not be provided by the Developer, unless specified otherwise in the Unit Sale Purchase Agreement.
4. The circulation area dimensions may be added to the nearby rooms & or the spaces dimensions for illustration purpose.



# **DANUBE PROPERTIES**

 **+971 800 57 57**

 **danubeproperties.com**

 **info@danubeproperties.ae**

Dubai | Abu Dhabi | Muscat | Riyadh | Bahrain | London | China | Mumbai | New Delhi | Gurugram | Kochi | Hyderabad

