

نخب  
NAKHEEL







# Iconic Developments in Dubai

Dubai, in the United Arab Emirates, is a modern metropolis with a gleaming cityscape of skyscrapers and spectacular waterfront developments.

Inspired by the UAE's tradition of growth, Nakheel has emerged as one of the world's leading developers, with an iconic portfolio of landmark developments in Dubai across the residential, retail, leisure and hospitality sectors.

Nakheel has a range of thriving master communities, majestic waterfront developments, leisure attractions, luxurious five-star hotels and beachfront resorts, restaurants and lounges, world-class marinas as well as impressive shopping malls, community retail centres, souks and clubhouses.



# Master Development and Communities

Together spanning more than 15,000 hectares, Nakheel's master developments in prime locations across Dubai provide homes for over 300,000 people.

Nakheel's waterfront projects, including the world-famous and award-winning Palm Jumeirah, have added more than 300 kilometres to Dubai's original 70km coastline, paving the way for the development of hundreds of seafront homes, resorts, hotels and attractions.

Nakheel's other master communities include The World, Jumeirah Islands, Jumeirah Park, Jumeirah Heights, Jumeirah Village, Al Furjan, Jebel Ali Village, and Dubai Islands.







# Palm Jumeirah

A world-famous destination for living, leisure and tourism.

One of the world's largest man-made islands, Palm Jumeirah is a spectacular feat of engineering that saw 560 hectares of new land rise out of the sea in the shape of a date palm. The development stretches 5 km into the Arabian Gulf and comprises a two-kilometre long trunk, 17 fronds and an 11-kilometre long crescent.

Palm Jumeirah is a growing residential, tourism, and leisure destination. It is home to almost 80,000 people and features luxury residences and waterfront homes, retail destinations, leisure attractions, world-class marinas and Al Ittihad Park, the UAE's first indigenous park. The Palm Monorail, the Middle East's first monorail system, offers an environmentally-friendly mode of transport for Palm Jumeirah.



# The Palm Tower

An impressive 52-storey hotel and residential development in the heart of Palm Jumeirah with spectacular views. The tower features 432 luxurious furnished residences as well as a five-star hotel, St. Regis Dubai - The Palm.

The tower also includes AURA Skypool and Lounge on the 50th floor with one of the world's largest infinity pools; internationally-renowned SushiSamba restaurant on the 51st floor and The View at The Palm, a public observation deck on the 52nd floor offering panoramic views of Palm Jumeirah, the Arabian Gulf and the Dubai skyline.







## Signature Villas

A collection of 436 luxurious beachfront villas at Palm Jumeirah's fronds, each with a private pool, direct beach access and spectacular views.



## Palma Residences

An exclusive collection of 104 contemporary-style townhouses situated on the eastern shoreline of Palm Jumeirah's trunk with direct beach and pool access.



## Canal Cove Townhouses

Spacious townhouses located in clusters at every frond, with stunning sea views as well as access to a swimming pool and landscaped entertainment areas at each cluster.





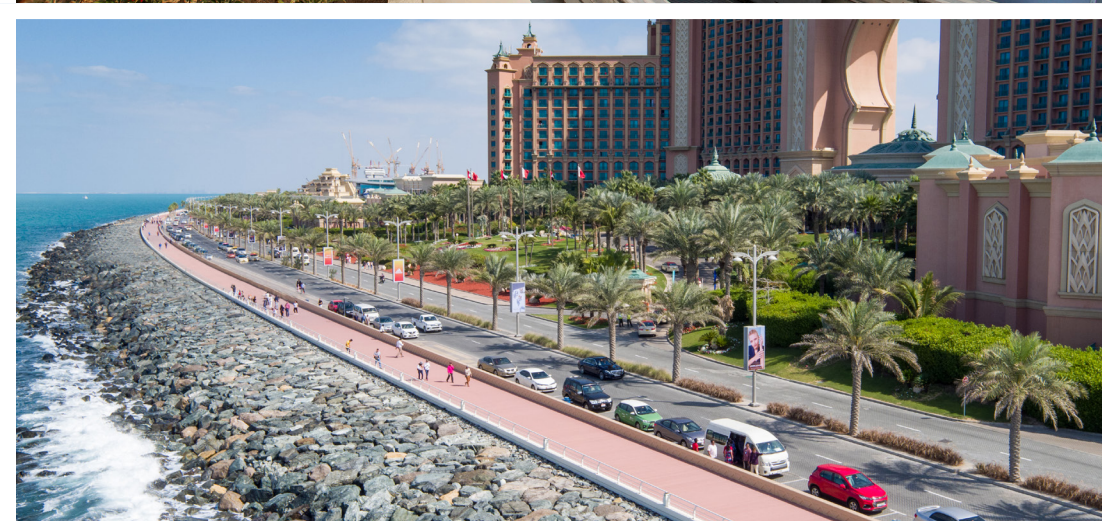
## Al Ittihad Park

A 1.1 million square foot park, with more than 60 varieties of plants indigenous to the the UAE as well as a 3.2 kilometre jogging track.



## The Palm Monorail

The Middle East's first monorail system, running the length of Palm Jumeirah, is a wonderful, environmentally-friendly way to explore this award-winning destination.



## The Boardwalk

A waterfront promenade stretching the entire length of Palm Jumeirah's crescent with stunning views.



# Azure Residences

An idyllic beachfront development with luxury apartments offering exclusive beach access and spectacular views of the sea and the Dubai skyline.



# The Palm Beach Towers

A trio of towers, this incredible residential, retail and beach club development is situated at the entrance to Palm Jumeirah.





## Palm Views

Two spectacular residential developments offering the ultimate modern waterfront living, along with fitness clubs, restaurants and shops.



## Marina Residences

A spectacular waterside development with six residential towers featuring two and three bedroom apartments as well as luxurious penthouses.







## The World

One of Nakheel's most awe-inspiring and ambitious projects. The World Islands is located 3.2 kilometres off the coast of Dubai and comprises of 300 man-made islands, shaped to form the continents.

The remarkable artificial archipelago has added nearly 232 kilometres of new beach front to Dubai's coastline and offers unique opportunities for the development of exclusive leisure and residential projects.

More than 10 million square meters of upland is ready to be developed into waterfront leisure, residential and tourism destinations. Antarctica island is a premier leisure boating destination to drop anchor and relax for swimming, paddle boarding or kayaking. One of the world's most prestigious luxury hotel brands, Anantara, has an entire island dedicated to a new resort - Anantara World Islands Dubai Resort. Another prestigious project - Heart of Europe, is a tourism destination comprising of six themed islands at The World offering luxury hotels, vacation homes and private mansions, while Lebanon island is home to a private beach club and resort with stunning views of the Dubai skyline.





## Jumeirah Islands

Jumeirah Islands is a luxurious community comprising 50 islands with high-end villas and townhouses, surrounded by tranquil lakes and lush landscaping.

In addition to quaint walkways and picturesque bridges across the waterways, Jumeirah Islands has a range of outstanding amenities and leisure facilities for residents, including Jumeirah Islands Pavilion, a waterfront leisure, dining and shopping hub, and Jumeirah Islands Club, making it one of Dubai's most desirable communities.



## Jumeirah Islands Townhouses

Designed for modern family living, this exclusive community of luxurious four-bedroom townhouses seamlessly blends indoor comfort with outdoor spaces.





## Dubai Islands

A spectacular 15.3 square kilometres mixed-use, waterfront development, Dubai Islands comprises four man-made islands adjacent to Dubai's Deira district.

The remarkable project covers a total area of 15.3 square kilometres and adds an additional 40 kilometres, including 21 kilometres of beachfront, to Dubai's coastline. Easily accessible from the mainland via road or boat, Dubai Islands is also close to Dubai International Airport.



# Jumeirah Village

Comprising two distinct areas - Jumeirah Village Triangle and Jumeirah Village Circle, Jumeirah Village offers residents a real sense of community.

The expensive Jumeirah Village boasts an impressive variety of residences and land development plots as well as leisure and lifestyle amenities including community centres, schools, a cycling track and more.



## Jumeirah Village Circle

Jumeirah Village Circle has more than 700 Nakheel villas in addition to other residential developments, along with landscaped parks, Circle Mall and Jumeirah Village Circle Hub.



## Jumeirah Village Triangle

Jumeirah Village Triangle features 1,573 spacious villas and townhouses built in traditional Arabian and Mediterranean styles, in addition to the upcoming Al Khail Avenue, a bustling new retail and entertainment destination.





## Jumeirah Heights

Jumeirah Heights is a spectacular residential development that offers residents relaxed, waterside living.

Surrounded by lush parks and tranquil lakes, Jumeirah Heights comprises two clusters, each housing three low-rise apartments buildings with two and three-bedroom loft apartments and townhouses with scenic views.



## Jumeirah Park

Jumeirah Park is one of Dubai's most sought-after places to live with 3,000 luxury family villas, surrounded by verdant parks and green spaces.

The peaceful neighbourhood is located in close proximity to Sheikh Zayed Road, Ibn Battuta Mall and a number of schools. Community amenities include Jumeirah Park Pavilion, children's play areas and an upcoming clubhouse.





## Al Furjan

One of Dubai's most popular residential districts, Al Furjan is a vibrant neighbourhood that celebrates the true spirit of community. The four-bedroom villas and three-bedroom townhouses are designed to satisfy every practical need with all modern comforts.

Al Furjan's exceptional community facilities include two community retail centres, Al Furjan Pavilion and Al Furjan West Pavilion, with a variety of leisure amenities, as well as landscaped parks and Al Furjan Club.

The master community also features Tilal Al Furjan, a lush green community with luxurious four and five bedroom villas, as well as Murooj Al Furjan and Murooj Al Furjan West, with more villas and townhouses.





# Murooj Al Furjan & Murooj Al Furjan West

A luxurious new community named after flourishing meadows, at Murooj Al Furjan, lush green landscapes weave between the hypnotic clean lines of villas and townhouses.



- TOWNHOUSE (LAYOUT - A)
- TOWNHOUSE (LAYOUT - B)
- 4 BEDROOM VILLA (LAYOUT - A)
- 4 BEDROOM VILLA (LAYOUT - B)
- 4 BEDROOM VILLA LARGE (LAYOUT - A)
- 4 BEDROOM VILLA LARGE (LAYOUT - B)
- 5 BEDROOM VILLA (LAYOUT - A)
- 5 BEDROOM VILLA (LAYOUT - B)

Murooj Al Furjan master plan



Murooj Al Furjan West master plan





## Tilal Al Furjan

Everything about Tilal Al Furjan is elevated. On higher land, two gated communities overlook the master Al Furjan community, spacious four- and five-bedroom standalone villas push the boundaries of modern elegance, expressed with minimalism and the finest décor.



# Villas Overview

4 & 5 bed independent villas ranging from 4,100 – 5,100 square feet.

- Choice of wide frontage plots
- Private gardens
- Built-in wardrobes
- En-suite bathrooms for all bedrooms
- Garage space for three cars
- Optional swimming pool
- Layouts available with courtyard, swimming pool, show kitchen, maid's and driver's room, and storerooms
- The finest décor with light and dark interior options

## Location

Situated high above the master Al Furjan community, Tilal Al Furjan is minutes away from Ibn Battuta Mall with close access to transport routes in Sheikh Zayed Road and the Al Furjan Metro Station. All this, while maintaining a feel of a leafy gated community.

## Community Features

- Elevated views
- Gated community
- Games courts – basketball, tennis and paddle tennis
- Playgrounds and open green spaces
- Green trail cycle paths
- Proximity to Al Furjan Metro Station







## Garden View Villas

Grand View Villas consists of a collection of 286 townhouses and villas set in a beautiful family-orientated residential community.





## Garden Apartments

Grand apartments is a collection of eight buildings with 1,526 apartments.





## Jebel Ali Village

A brand new upscale residential development in a location with a rich link to the past, Jebel Ali Village offers a luxurious living experience, set amongst rolling hills and lush green spaces.





# Malls

Nakheel's shopping destinations contribute to enhancing the experience of visitors and providing excellent business opportunities for both international brands and local traders.

Strategically located across Dubai, Nakheel's diverse collection of shopping, leisure and entertainment destinations includes established and upcoming large-scale malls, modern souks as well as community retail centres, known as Nakheel Pavilions, featuring shops, dining outlets and essential services.







## Nakheel Mall

An iconic experience in the heart of the Palm Jumeirah, offering more than 300 shops, restaurants and leisure attractions including a multi-screen cinema and a collection of rooftop fine-dining outlets.





## The View at The Palm

A stunning observation deck towering 240 metres above Palm Jumeirah, on the 52nd floor of The Palm Tower. The attraction is the only location in Dubai offering the unique experience of spectacular views of Palm Jumeirah, the Arabian Gulf and the Dubai skyline, along with an interactive experience about the making of Palm Jumeirah. Take this experience to new heights at The Next Level, a stunning private viewing space, 250 metres above ground, the highest vantage point on Palm Jumeirah.





## Circle Mall

Located at Jumeirah Village Circle, Circle Mall is a family-friendly destination with leading retailers, food and entertainment brands. The rooftop features McCafferty's, an Irish restaurant concept, in addition to a host of cafes and dining options.



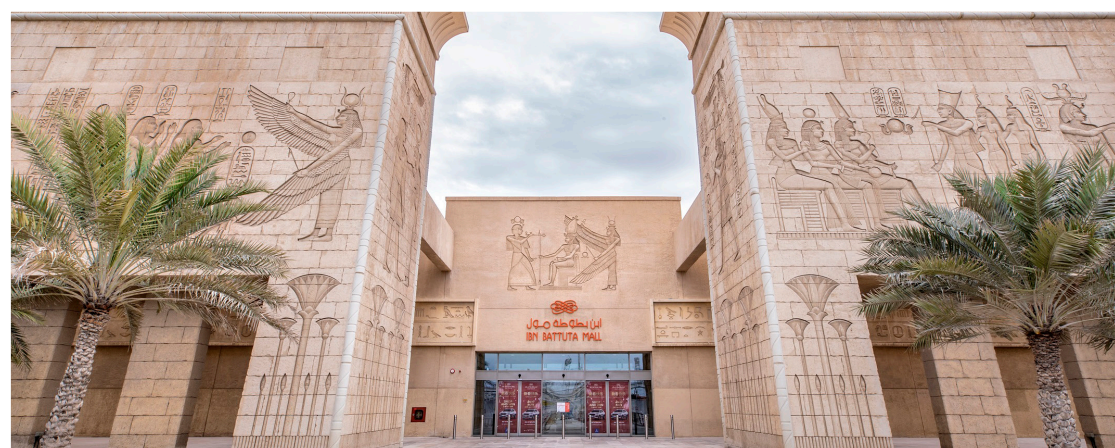
## Golden Mile Galleria

A retail and dining destination at Palm Jumeirah with 70 outlets including a supermarket, a range of cafes and restaurants, a fitness centre, a medical centre and two nurseries.



## Club Vista Mare

A lively beachfront dining and leisure development with a relaxed atmosphere, featuring seven unique restaurants with indoor and outdoor seating.



## Ibn Battuta Mall

The world's largest themed shopping mall, Ibn Battuta Mall offers nearly 500 outlets including shops, restaurants and cafés, and boasts a 21-screen cinema.





## Palm West Beach

Palm West Beach is a walkable waterfront destination at Palm Jumeirah for all-day entertainment, with water sports, a range of premium hotels and restaurants, water sports, and the best Dubai skyline views. Palm West Beach is home to 300 illuminating palm trees and is a pet friendly destination that stretches across 1.6km of promenade and beachfront.



## Souk Warsan

A modern take on the traditional souk, housing 1,170 shops including two department stores, as well as 30 cafés and restaurants.



## The Pointe

A waterfront dining and entertainment destination located across the bay from Atlantis The Palm, with more than 70 restaurants, shops and attractions shops and attractions, a 1.5km promenade and The Palm Fountain, a spectacular fountain display.



# Hospitality and Leisure

Nakheel's growing hospitality and leisure portfolio includes hotels and serviced apartment developments from international reputable brands, as well as community clubs, beach clubs, restaurants and lounges.

Nakheel is bringing new hospitality concepts to Dubai through hotels and serviced apartment developments, ranging from five-star establishments to modest accommodation, at various locations including Palm Jumeirah, Deira Islands, Ibn Battuta Mall and Dragon City. Community clubs and beach clubs feature state-of-the-art fitness and leisure facilities while a diverse collection of restaurants and lounges serve a variety of cuisines.







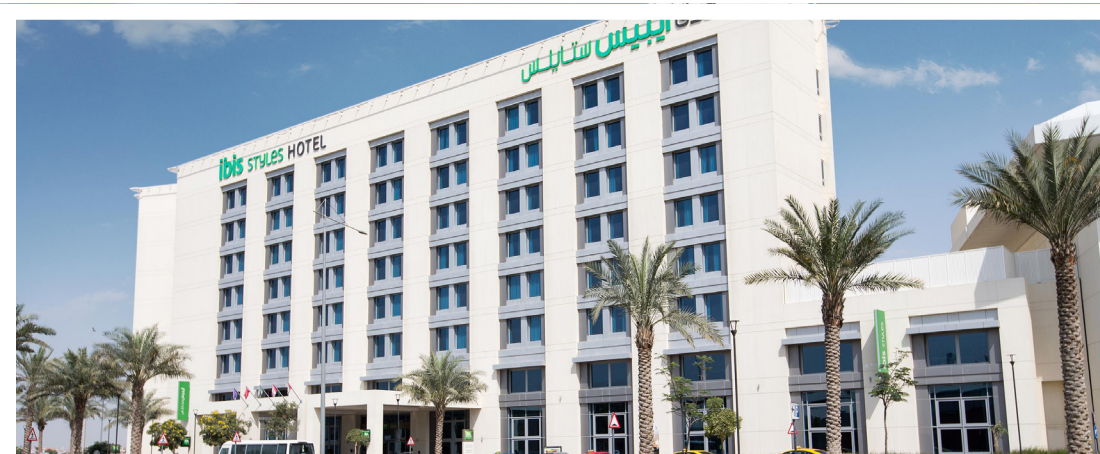
## Premier Inn Dragon City

A 304-room hotel at Dragon City with an extensive variety of guest amenities and facilities.



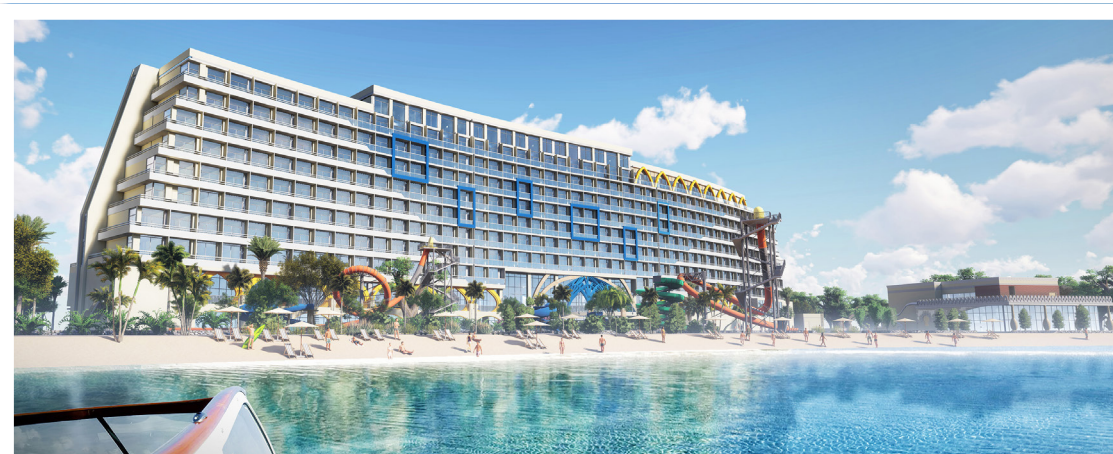
## RIU Dubai

An 800-room beachfront resort at Dubai Islands, with 800 rooms and suites, 10 food and beverage outlets, a splash park, three swimming pools, two children's pools, water sports, a fitness centre, beauty salon and children's club.



## ibis Styles Dragon Mart Dubai

A 251-room hotel directly connected to Dragon Mart 2 and located just 15 minutes away from Dubai International Airport.



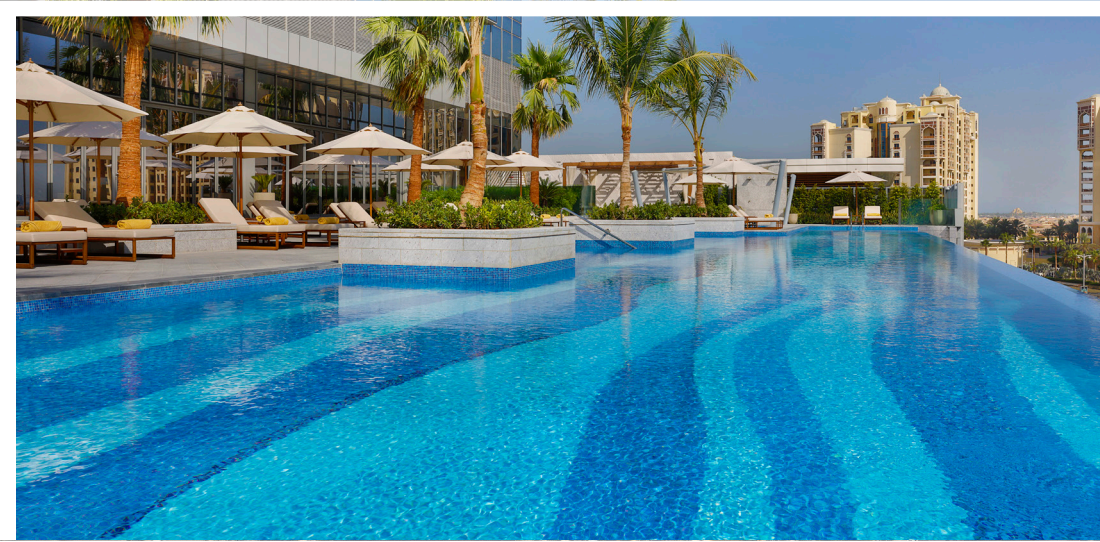
## Centara Mirage Beach Resort Dubai

A 607-room beachfront resort and water park with multiple restaurants, a spa and fitness centre, and business facilities.



## St. Regis Dubai - The Palm

The St. Regis Dubai, The Palm at The Palm Tower, features 290 luxurious rooms and suites, bespoke restaurants and lounges, Iridium Spa as well as two infinity swimming pools with captivating views of Palm Jumeirah, and more.



## Avani Ibn Battuta Mall

An 18-storey hotel located next to Ibn Battuta Mall, with 360 guestrooms including 15 suites, as well as dining and recreation facilities.



## Premier Inn Dubai Ibn Battuta

A 372-room hotel directly connected to Ibn Battuta Mall and Ibn Battuta Metro station.







## Nakheel Marinas

Nakheel develops and operates a number of world-class marinas in its landmark developments, further enhancing the luxury lifestyle offerings of its iconic waterfront communities.

The impressive marinas provide boat owners with mooring space, enabling residents and visitors to access Dubai's coastal areas and inland canals.



## Dubai Islands Marinas

Six marinas at Dubai Islands offer mooring for over 600 boats and yachts of up to 60 metres long.



## Marina

Two marinas situated on either side of Palm Jumeirah offer a total of 522 berths for boats and yachts of varying sizes and types.





# Meydan

Meydan is the visionary concept of His Highness Sheikh Mohammed Bin Rashid Al Maktoum,  
UAE Vice President, Prime Minister and Ruler of Dubai.

It includes wide range of commercial developments, sports, hotels, entertainment and  
fun facilities, a series of state-of-the-art business parks, hospitals, schools, residential  
villa communities, business towers with luxury waterfront developments and shopping  
destinations.







## Canal Front Residences

Relish the beauty of Dubai Water Canal from Canal Front Residences, a distinguished new residential community by Meydan.

Enviably located at the water's edge and within the city centre, Canal Front Residences is just a stone's throw away from Safa park, with grace and glamour in equal measure. A neighbourhood brimming with life, it offers an idyllic lifestyle with a spectacular ensemble of contemporary one, two and three bedroom apartments, on either side of the canal.





## Residences

- Mid-rise residential buildings
- Luxury waterfront residences
- 2- and 3-bedroom residences and duplex
- Floor-to-ceiling glass windows and balconies
- Spacious rooms with meticulous interiors
- Water Canal and Safa Park views
- Occupies two distinct locations – on the northern bank of the Canal and on the southern bank of the Canal

## Unparalleled Amenities

- Outdoor swimming pool
- Connectivity to cycle track and boardwalk
- State-of-art gymnasium
- Dedicated locker rooms
- Landscaped gardens





## District One

**An innovative megapolis inspired by visionary leadership.**

District One is a superbly planned mixed-use gated community that forms a central part of the innovative Mohammed Bin Rashid Al Maktoum City. Situated at the very heart of Dubai, flanked by four arterial roads and surrounded by the city's iconic landmarks, this wonderful community features five master components – Family Entertainment, Retail, Arts, and Entrepreneurship and Innovation. Spread across 1,100 acres of lush greenery and centred around the magnificent Crystal Lagoon, Mohammed Bin Rashid Al Maktoum City – District One is the ultimate destination for luxury lifestyle and upscale living in Dubai.





## Mansions

Offering stunning vistas of the Crystal Lagoon, Mohammed Bin Rashid Al Maktoum City – District One’s meticulously designed mansions are the very pinnacle of sophistication. Built to the most exacting standards, these opulent mansions give you the gift of privacy and serenity while opening the doors to a vibrant neighbourhood – all within minutes from Dubai’s biggest attractions and landmarks.



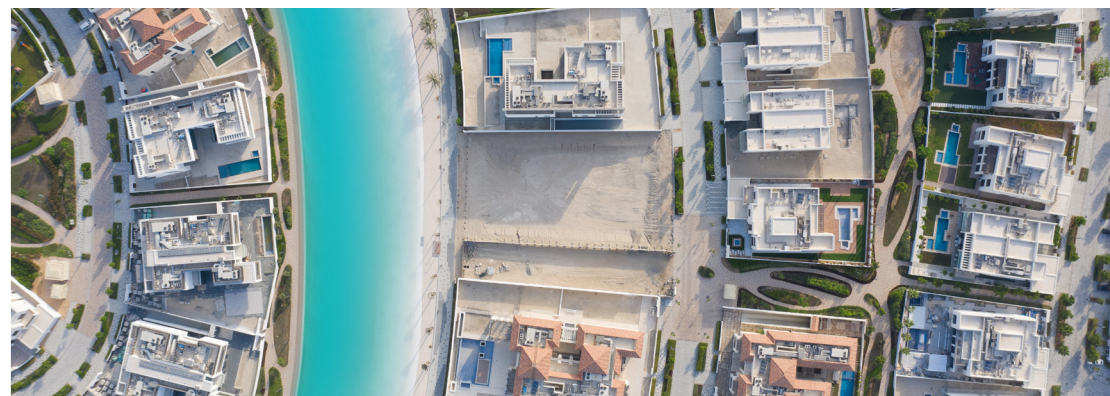
## Waterfront Residences

Experience the extraordinary every day in lavishly appointed waterfront homes with stunning interiors at Mohammed Bin Rashid Al Maktoum City – District One. Discover a life of understated luxury and wake up to spectacular views of the Crystal Lagoon and acres of lush greenery.



## Villas

Splendid villas at Mohammed Bin Rashid Al Maktoum City – District One with three distinctive architectural styles and a host of world-class amenities including your own cinema, a private gym and pool, to exclusive beachfront access.



## Signature Plots

Bespoke plots overlooking the magnificent Crystal Lagoon at Mohammed Bin Rashid Al Maktoum City – District One. Choose from one of 13 inspired designs by expert architects. With outstanding amenities, trendy community spaces and an unparalleled location, this is the definitive venue to bring fantasies to life.





- 1 ● Palm Jebel Ali
- 2 ● Madinat Al Arab
- 3 ● Veneto
- 4 ● Dubai Waterfront
- 5 ● Badrah
- 6 ● Badrah Pavilion
- 7 ● Badrah Clubhouse
- 8 ● Jebel Ali Village
- 9 ● Jebel Ali Club
- 10 ● The Gardens
- 11 ● Garden View Villas
- 12 ● Garden Apartments
- 13 ● Ibn Battuta Mall
- 14 ● Avani Ibn Battuta Dubai
- 15 ● Premier Inn Dubai Ibn Battuta

- 16 ● Jumeirah Park
- 17 ● Al Furjan Park Pavilion
- 18 ● Jumeirah Park East Pavilion
- 19 ● Jumeirah Heights
- 20 ● Jumeirah Islands
- 21 ● Jumeirah Islands Townhouses
- 22 ● Jumeirah Islands Pavilion
- 23 ● Jumeirah Islands Clubhouse
- 24 ● Al Furjan
- 25 ● Murooj Al Furjan
- 26 ● Murooj Al Furjan West
- 27 ● Tilal Al Furjan
- 28 ● Al Furjan Pavilion
- 29 ● Al Furjan West Pavilion
- 30 ● Masakin Al Furjan

- 31 ● Masakin Clubhouse
- 32 ● Al Furjan Club
- 33 ● Discovery Gardens
- 34 ● Discovery Gardens Pavilion
- 35 ● Jumeirah Village Triangle
- 36 ● Nakheel Mall Al Khail
- 37 ● Jumeirah Village Circle
- 38 ● Circle Mall
- 39 ● Nakheel Sales Centre
- 40 ● Palm Jumeirah
- 41 ● Azure Residences
- 42 ● Azure Beach Club
- 43 ● Shoreline Apartments
- 44 ● Shoreline Beach Clubs
- 45 ● Palma Residences

- 46 ● Al Ittihad Park at Palm Jumeirah
- 47 ● Club Vista Mare
- 48 ● The Palm Tower Residences
- 49 ● Nakheel Mall
- 50 ● The View at The Palm
- 51 ● St. Regis Dubai - The Palm
- 52 ● Palm Views East & West
- 53 ● Palm Views Marina Club East & West
- 54 ● The Pointe at Palm Jumeirah
- 55 ● The Palm Fountain
- 56 ● The Boardwalk
- 57 ● Marina Palm Jumeirah East & West
- 58 ● Beach Club
- 59 ● Palm West Beach
- 60 ● Golden Mile Palm Jumeirah

- 61 ● Golden Mile Galleria
- 62 ● Palm Beach Towers
- 63 ● The Palm Monorail
- 64 ● The World
- 65 ● Dubai Islands
- 66 ● Centara Mirage Beach Resort Dubai
- 67 ● RIU Dubai
- 68 ● Souk Al Marfa
- 69 ● Nakheel Mall Dubai Islands
- 70 ● Dubai Islands Marinas
- 71 ● Nad Al Sheba Villas
- 72 ● Nakheel Mall Nad Al Sheba
- 73 ● Nad Al Sheba Pavilion
- 74 ● Warsaw Village
- 75 ● Souk Warsan Townhouses

- 76 ● Souk Warsan
- 77 ● Warsan Club
- 78 ● International City
- 79 ● International City Pavilion
- 80 ● Dragon City
- 81 ● Dragon Mart
- 82 ● Ibis Styles - Dragon City
- 83 ● Premier Inn - Dragon City
- 84 ● MEYDAN PROJECTS
- 85 ● Marsa Meydan
- 86 ● Bab Al Shams
- 87 ● Nad Al Sheba Villas
- 88 ● Dubai Water Canal
- 89 ● Canal Front Residences
- 90 ● Mohamed Bin Rashid Al Maktoum City - District One
- 91 ● Lagoon Views

- 92 ● MAG City
- 93 ● Millenium Estates
- 94 ● DXBIKE
- 95 ● Meydan Avenue
- 96 ● Racecourse Villas
- 97 ● Azizi Riviera at Meydan One
- 98 ● Meydan One Mall
- 99 ● Sobha Hartland
- 100 ● Horizon
- 101 ● Golf Course
- 102 ● The Meydan Hotel and Grandstand
- 103 ● Grand Views
- 104 ● Polo Residence
- 105 ● Meydan Heights & Retail Center
- 106 ● District 11

- LEGEND
- Sales Centre
  - Communities
  - Retail
  - Hospitality
  - Marinas
  - Meydan

Visuals are for illustrative purposes only.  
Accurate at the time of printing (October 2022).









nakheel.com | +971 800 NAKHEEL