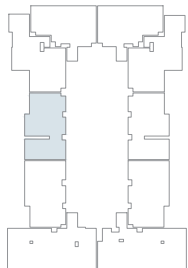
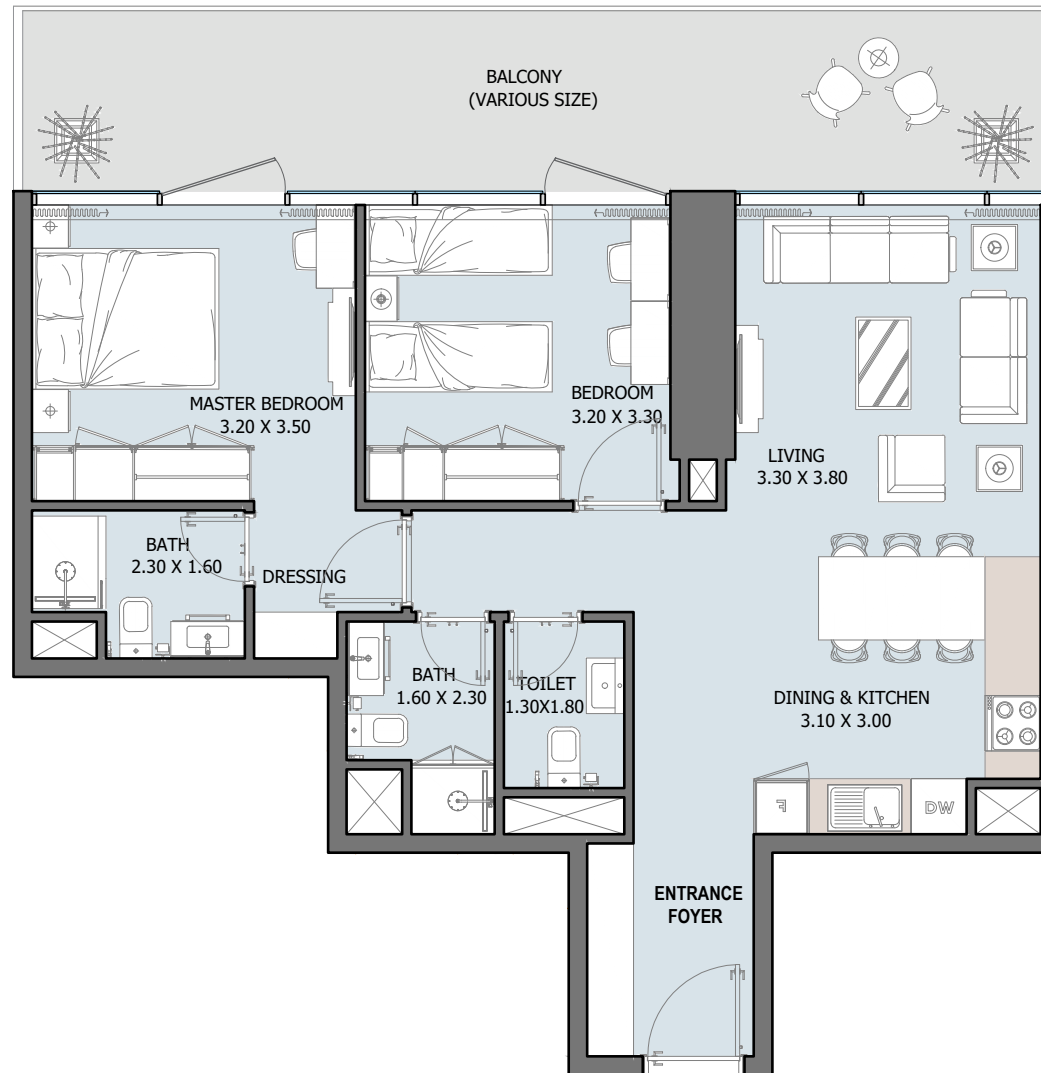


Reportage  *Tower*

AL MARYAH ISLAND

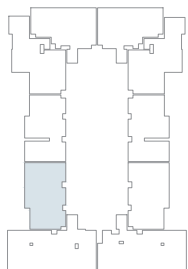
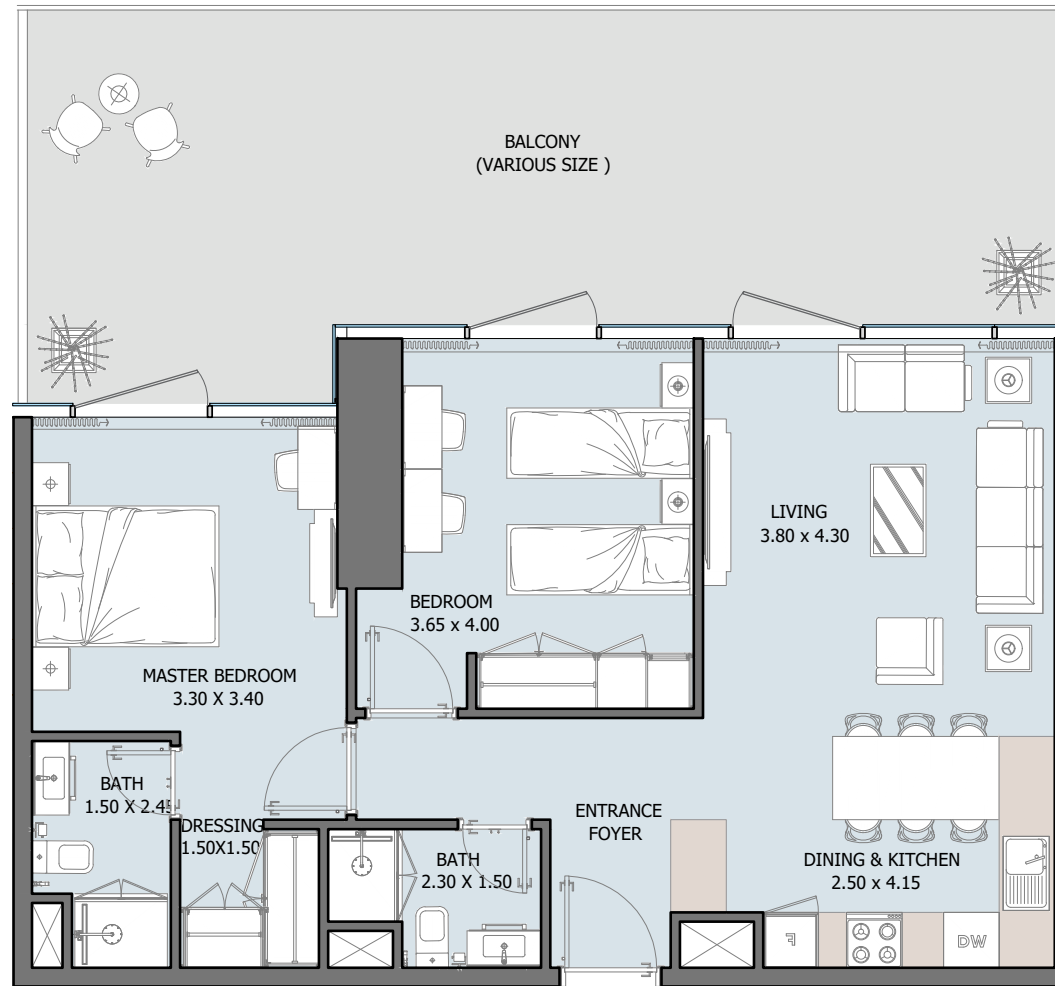
Unit Types



2B | Type A

From 1st to 6th Floor

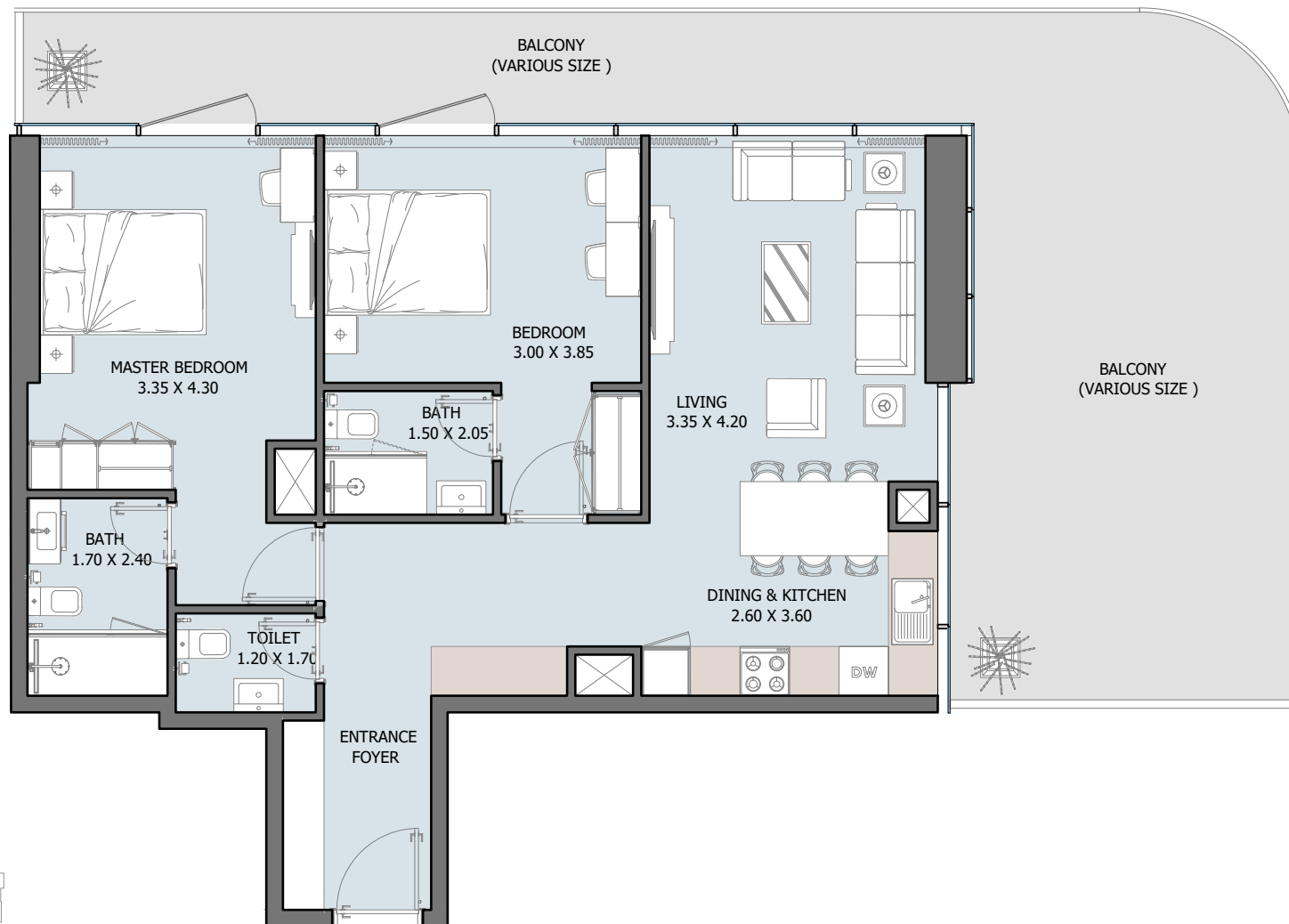
Internal Area	800.40 sq.ft
Outdoor Area	240.03 sq.ft
Total Area	1040.44 sq.ft



2B | Type B

From 1st to 6th Floor

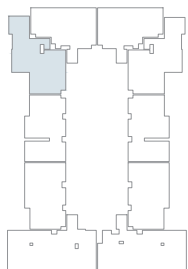
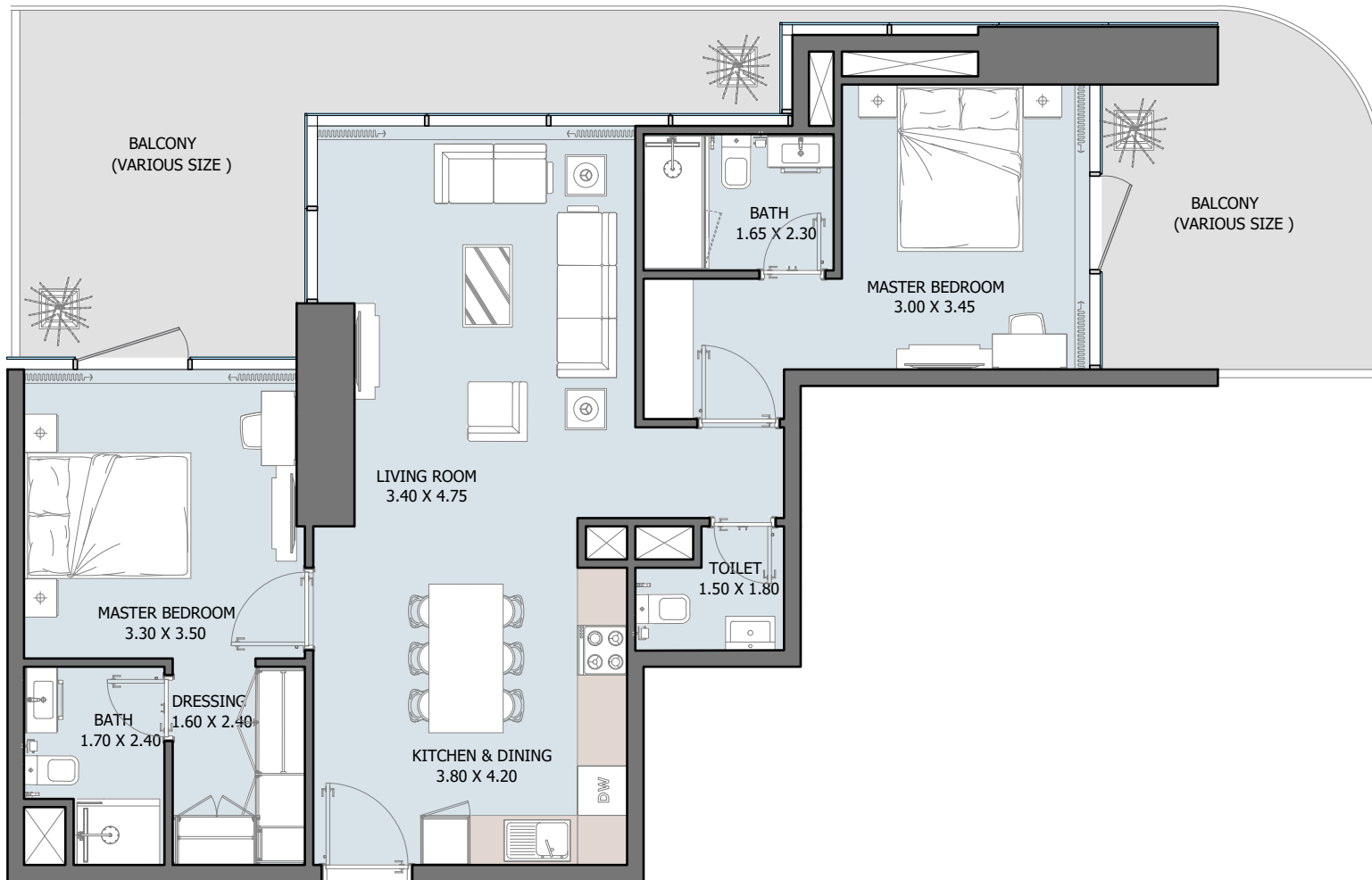
Internal Area	801.70 to 807.62 sq.ft
Outdoor Area	256.29 to 1525.24 sq.ft
Total Area	1063.90 to 2326.94 sq.ft



2B | Type C

From 2nd to 6th Floor

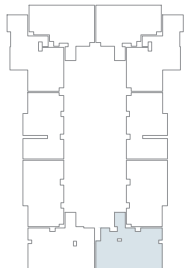
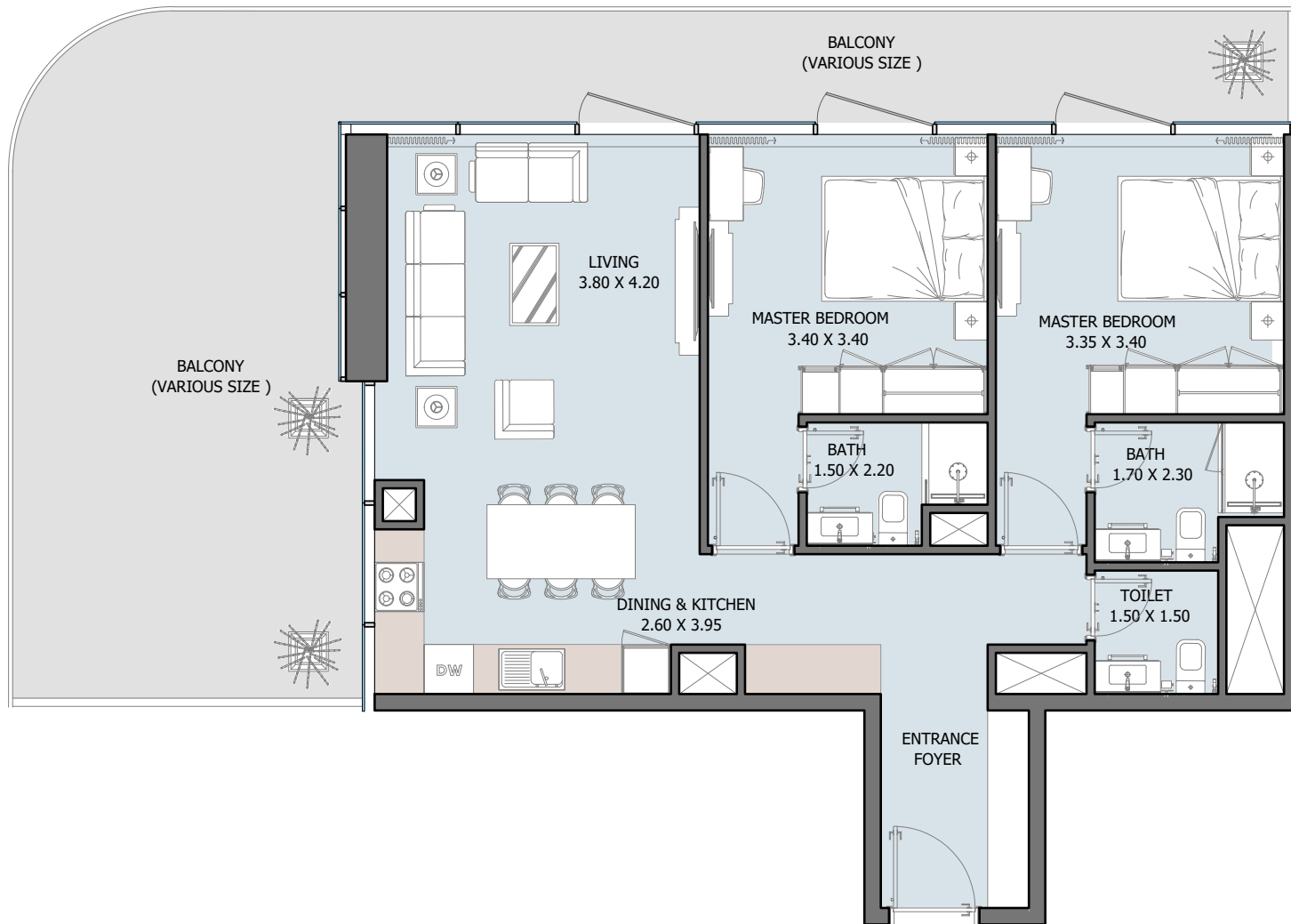
Internal Area	901.05 sq.ft
Outdoor Area	326.04 to 552.19 sq.ft
Total Area	1227.08 to 1453.23 sq.ft



2B | Type D

From 1st to 6th Floor

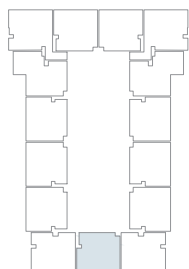
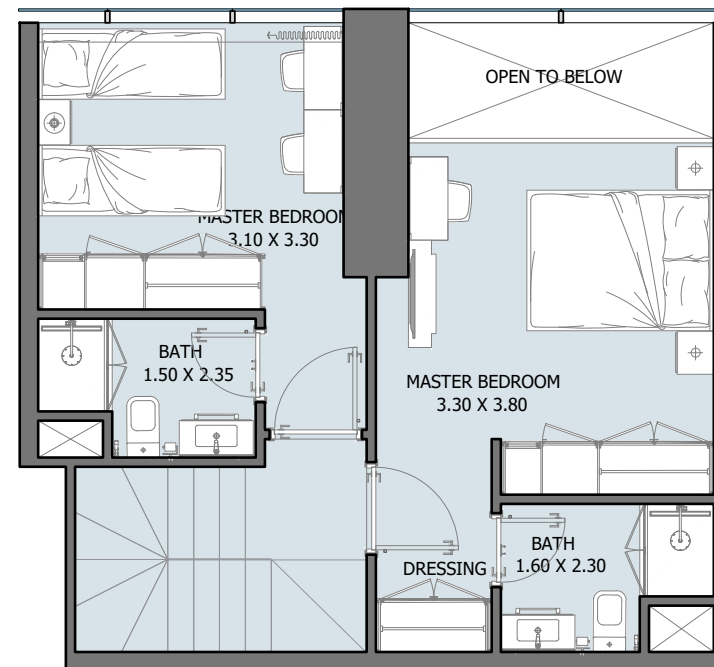
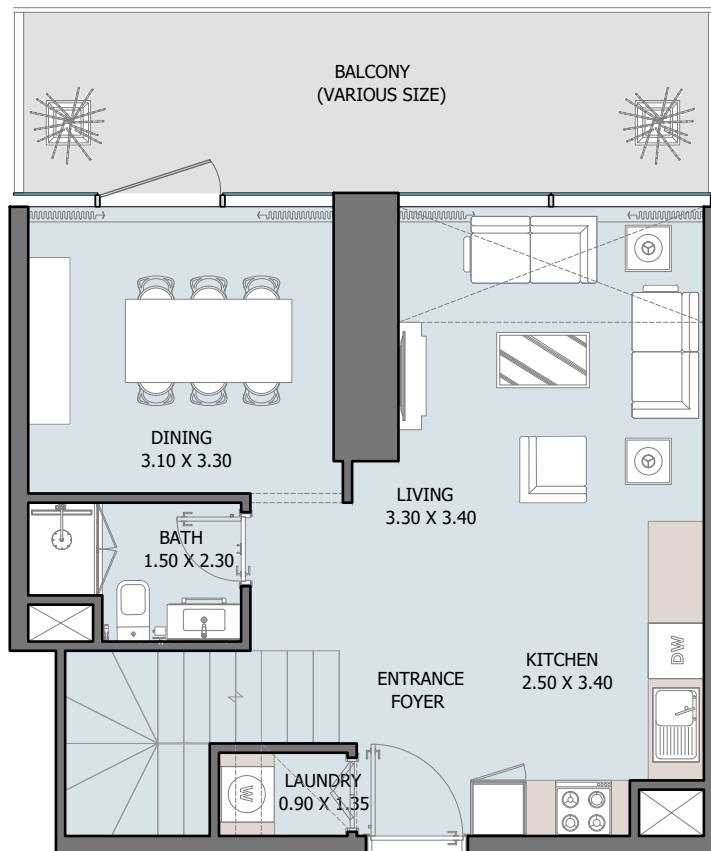
Internal Area	907.40 sq.ft
Outdoor Area	383.52 to 776.29 sq.ft
Total Area	1290.91 to 1683.69 sq.ft



2B | Type E

From 2nd to 6th Floor

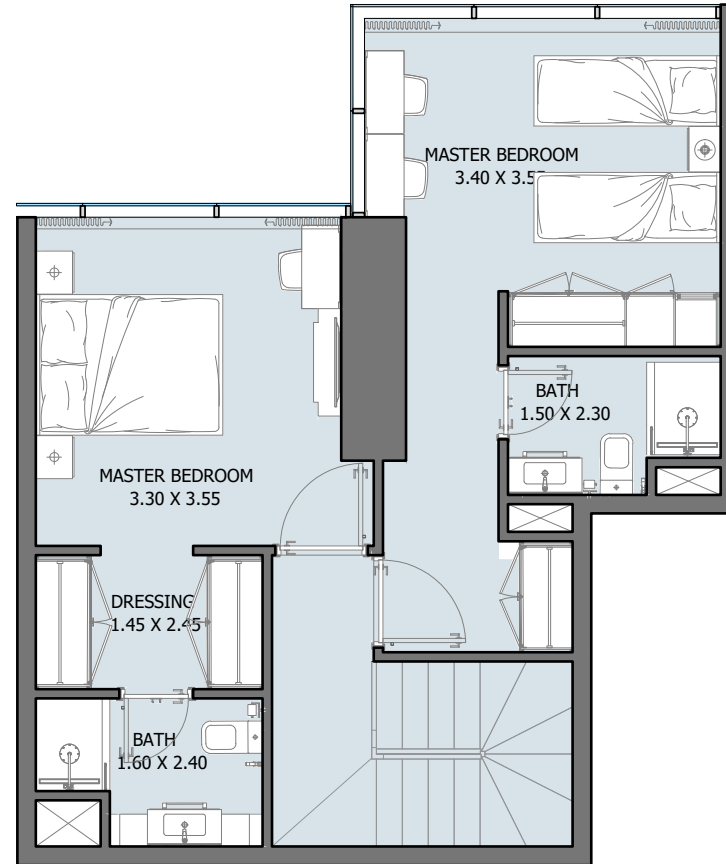
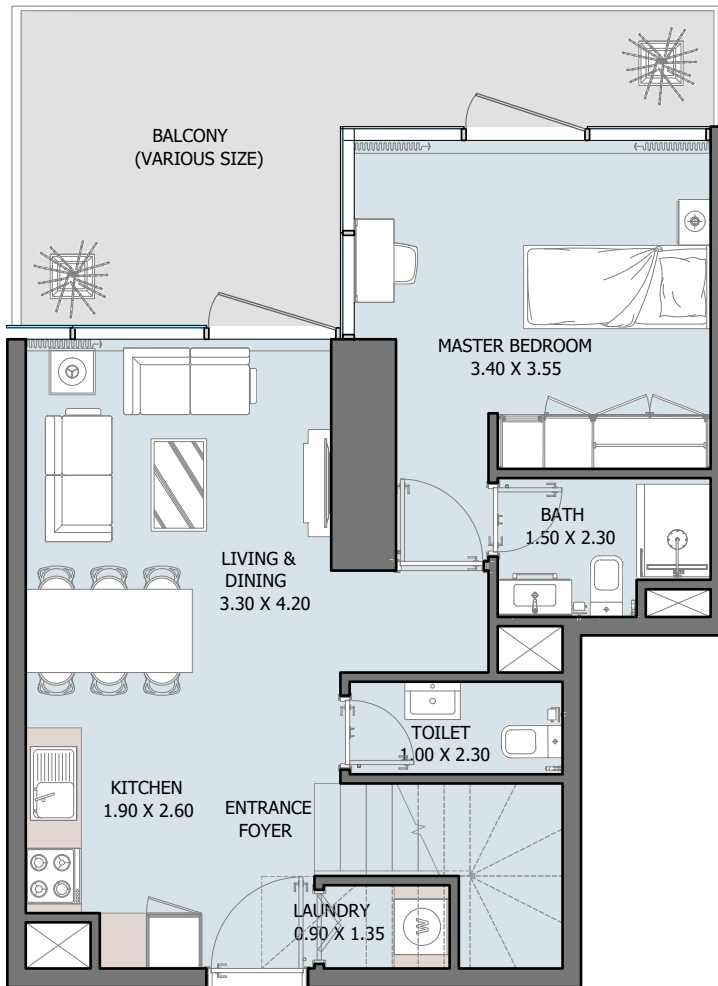
Internal Area	871.23 sq.ft
Outdoor Area	326.04 to 552.19 sq.ft
Total Area	1197.27 to 1423.42 sq.ft



2B Convertible Duplex | Type A

From 7th to 34th Floor

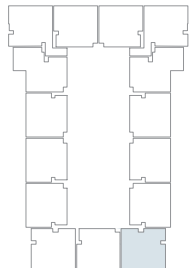
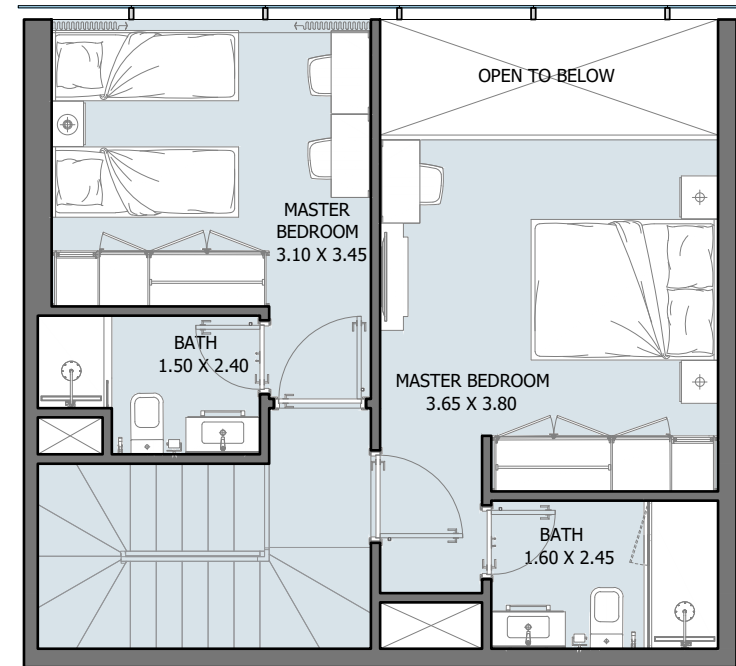
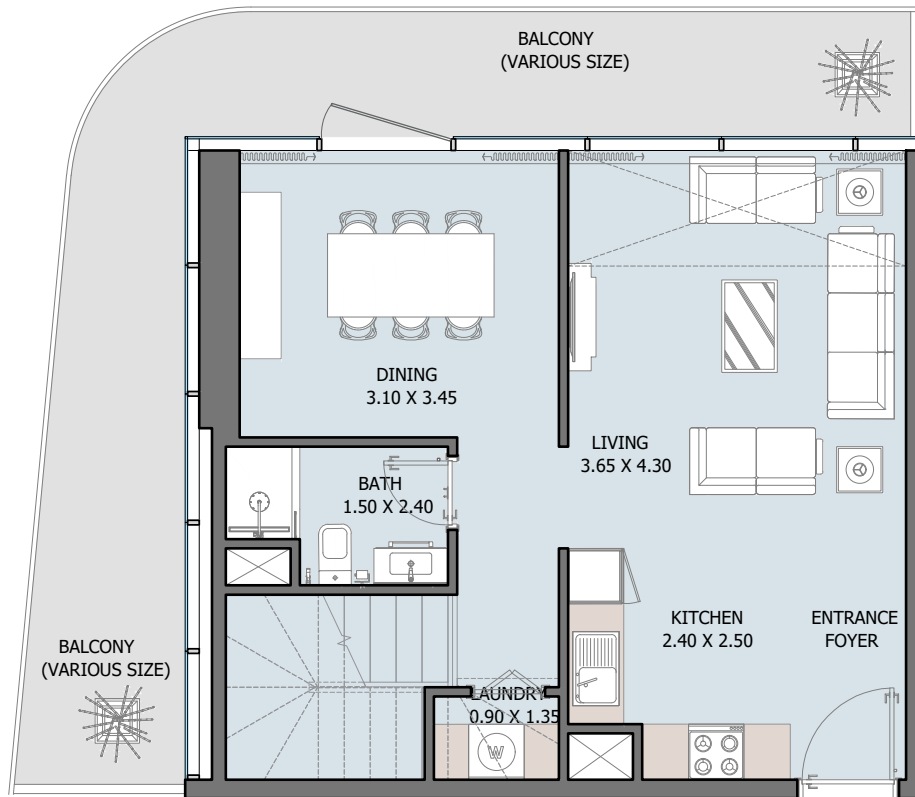
Internal Area	1029.24 to 1046.04 sq.ft
Outdoor Area	111.51 to 249.40 sq.ft
Total Area	1140.76 to 1289.30 sq.ft



2B Convertible Duplex | Type B

From 7th to 32th Floor

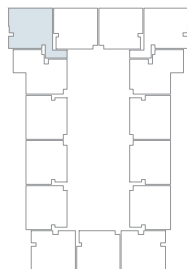
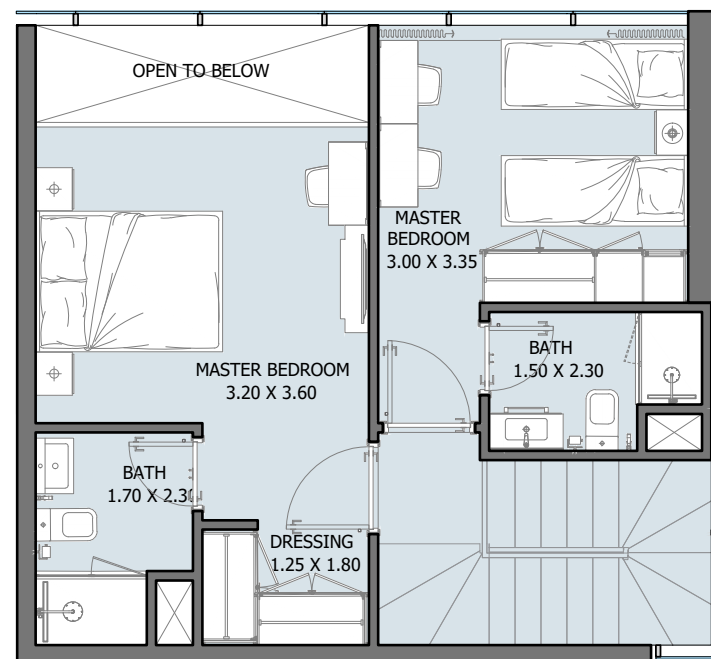
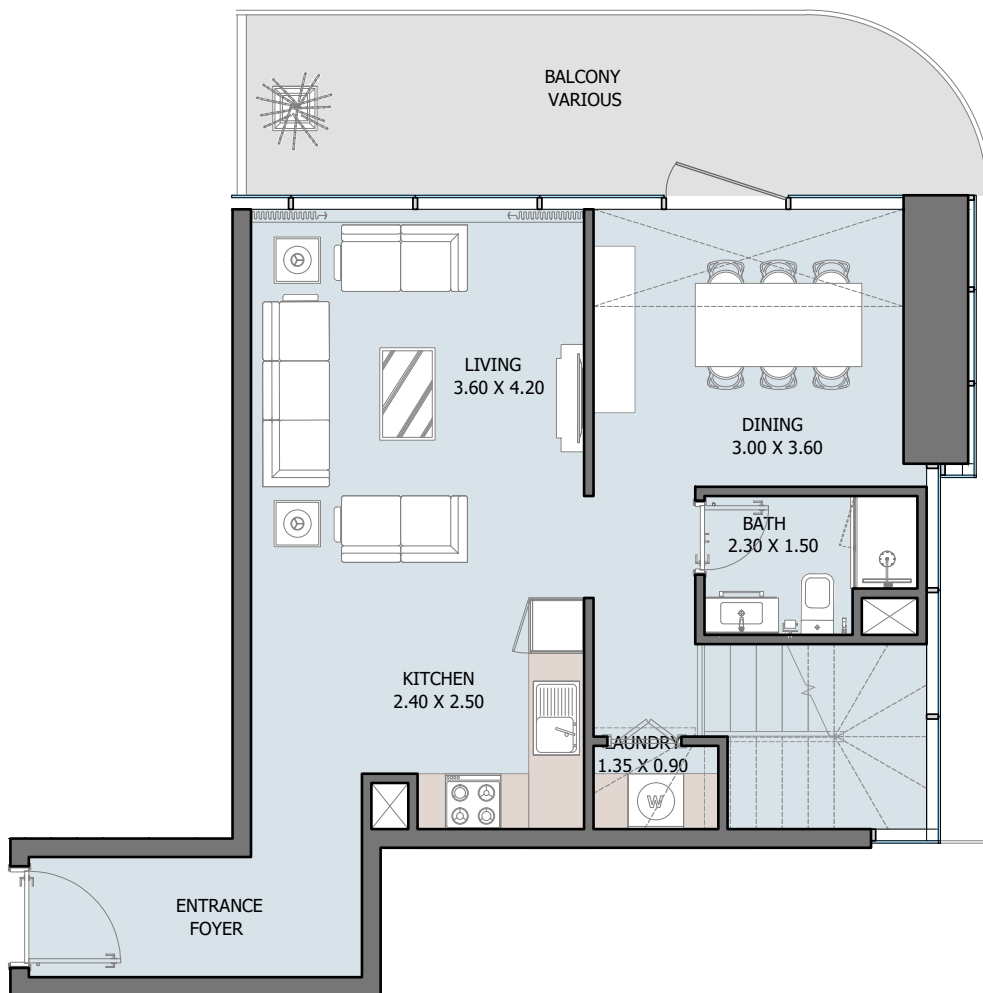
Internal Area	1178.65 sq.ft
Outdoor Area	188.26 sq.ft
Total Area	1366.91 sq.ft



2B Convertible Duplex | Type C

From 7th to 32th Floor

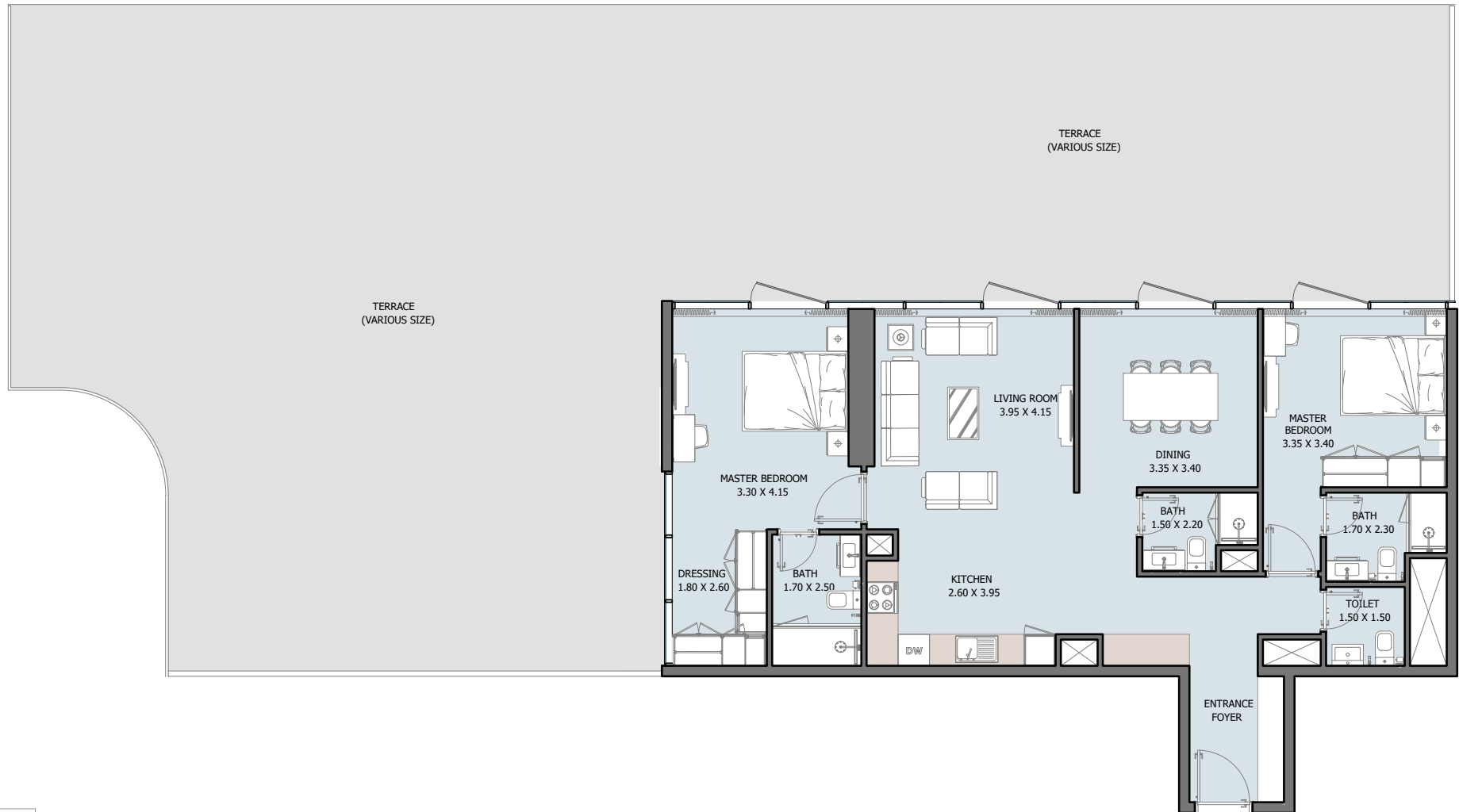
Internal Area	1073.27 sq.ft
Outdoor Area	269.85 sq.ft
Total Area	1343.12 sq.ft



2B Convertible Duplex | Type D

From 7th to 32th Floor

Internal Area	1128.49 sq.ft
Outdoor Area	165.12 sq.ft
Total Area	1293.61 sq.ft

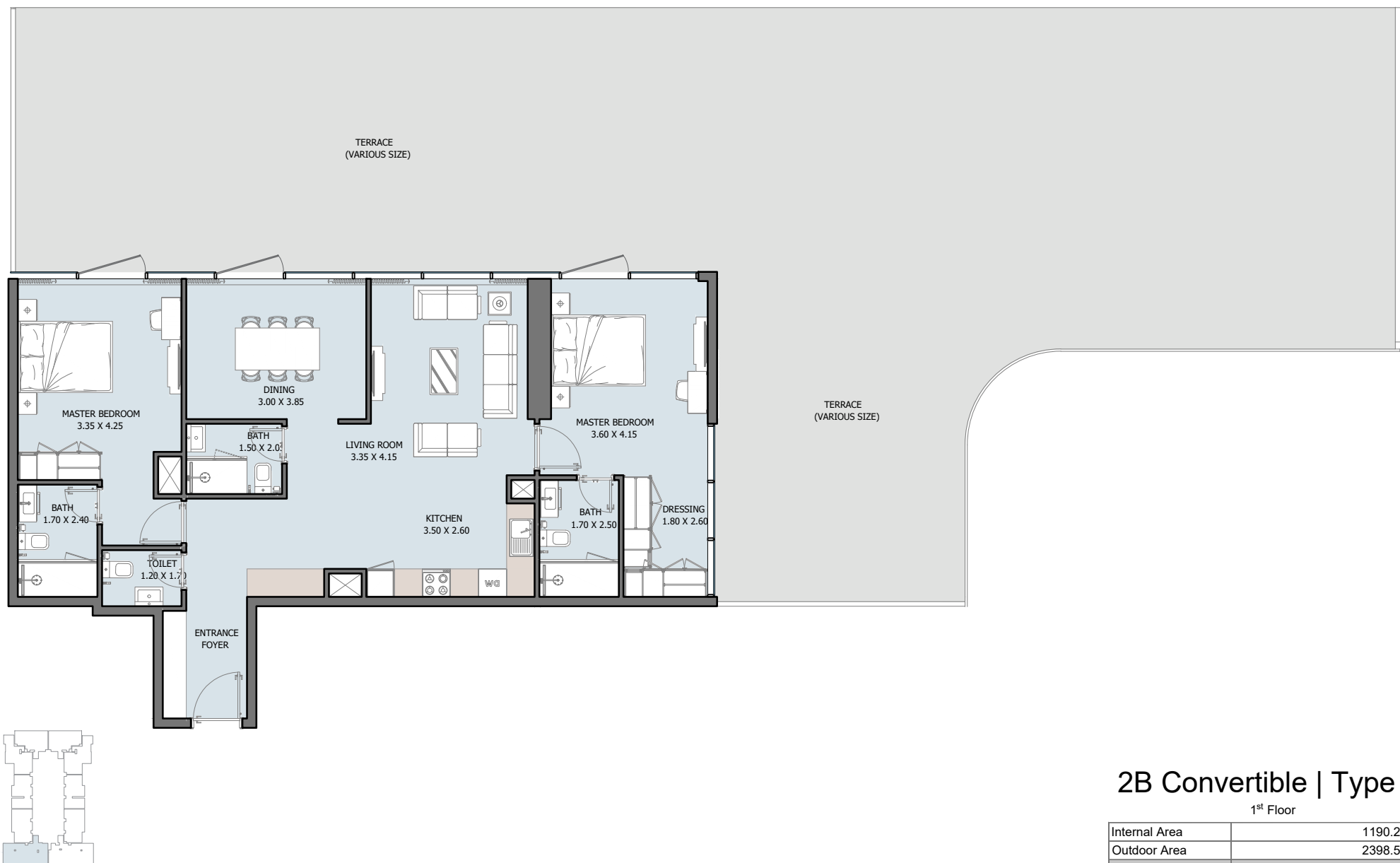


2B Convertible | Type E

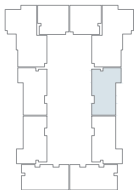
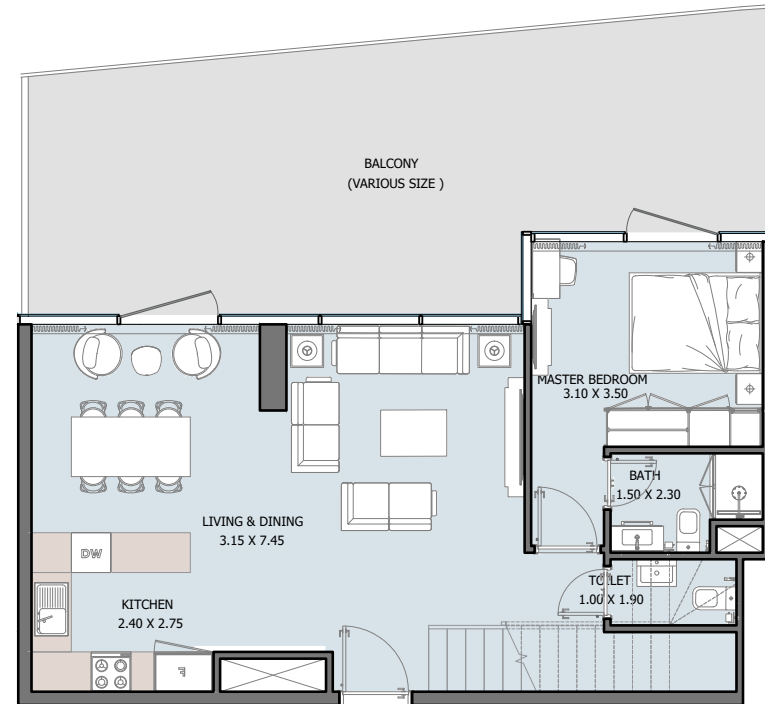
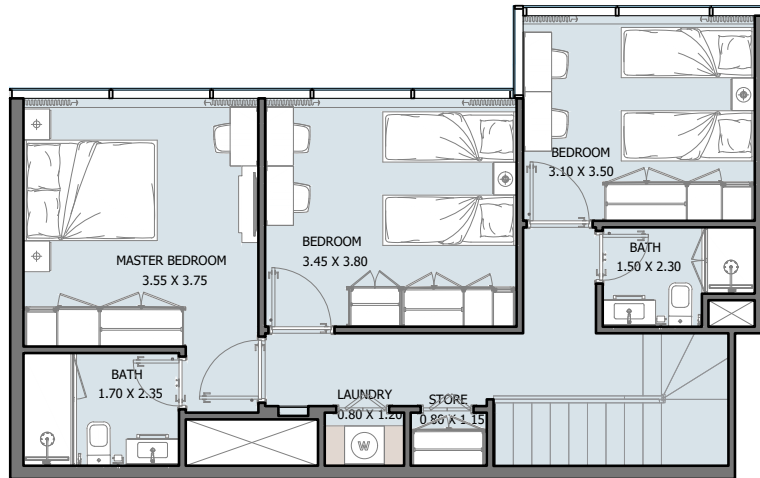
1st Floor

Internal Area	1160.46 sq.ft
Outdoor Area	2458.80 sq.ft
Total Area	3619.25 sq.ft

All drawings and dimensions are approximate. Drawings are not to scale and are subject to change without notice. The developer reserves the right to make revisions. The units are measured at typical floors in the building and columns may vary in size depending on the floor level. The furnishing and accessories shown are for representation only. The availability, length and width of the balcony varies depending on which floor and which orientation the unit is located within the building. There will be slight differences in the internal areas between the same unit types depending on the shaft sizes that go through the units.



All drawings and dimensions are approximate. Drawings are not to scale and are subject to change without notice. The developer reserves the right to make revisions. The units are measured at typical floors in the building and columns may vary in size depending on the floor level. The furnishing and accessories shown are for representation only. The availability, length and width of the balcony varies depending on which floor and which orientation the unit is located within the building. There will be slight differences in the internal areas between the same unit types depending on the shaft sizes that go through the units.

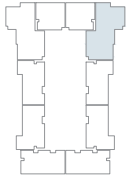
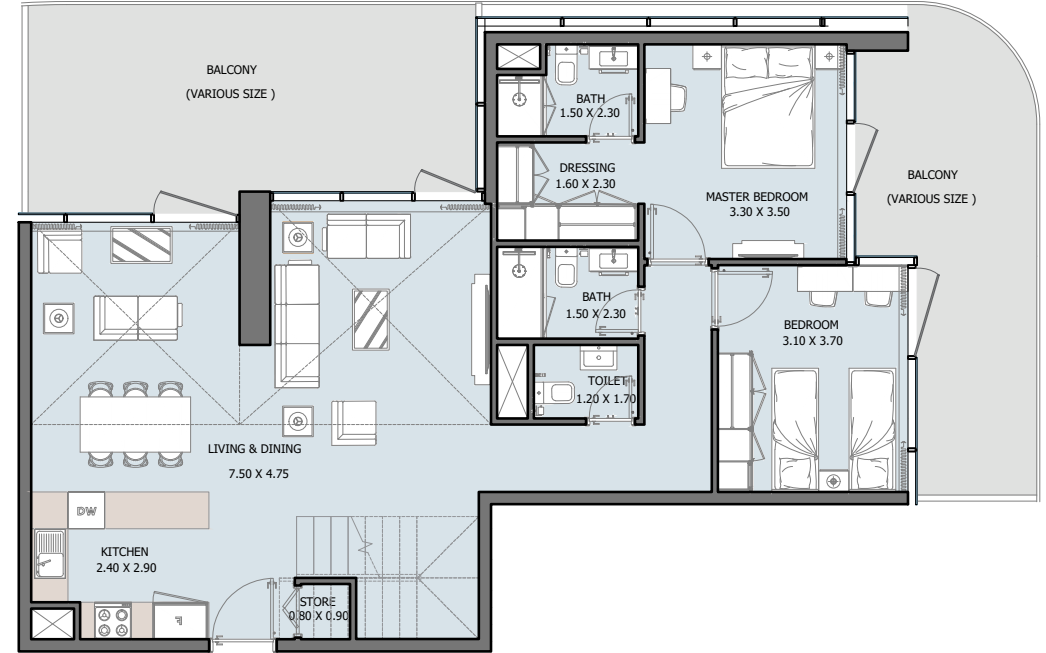
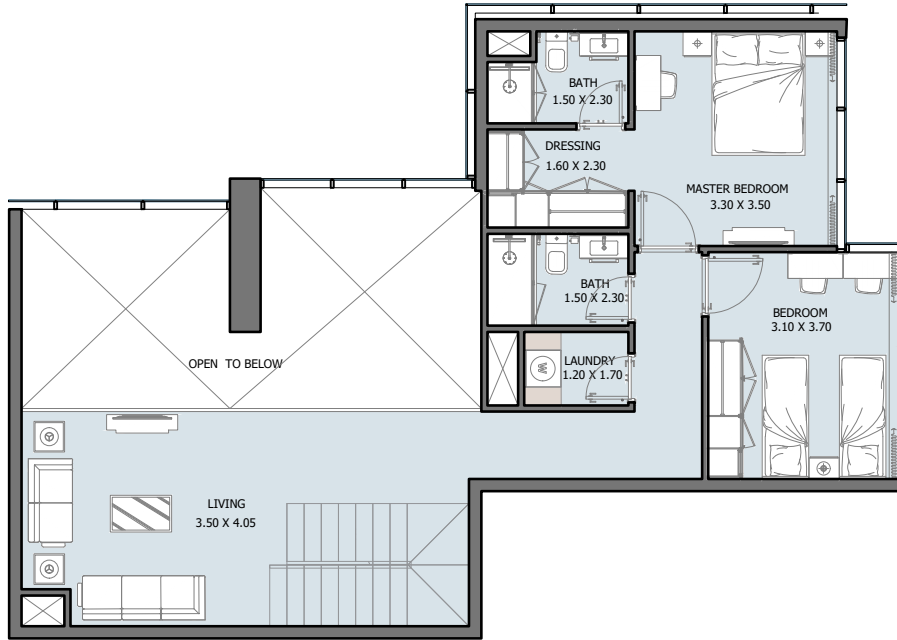


4B Penthouse | Type A

34th Floor

Internal Area	1444.52 to 1468.30 sq.ft
Outdoor Area	315.27 to 453.81 sq.ft
Total Area	1783.58 to 1898.32 sq.ft

All drawings and dimensions are approximate. Drawings are not to scale and are subject to change without notice. The developer reserves the right to make revisions. The units are measured at typical floors in the building and columns may vary in size depending on the floor level. The furnishing and accessories shown are for representation only. The availability, length and width of the balcony varies depending on which floor and which orientation the unit is located within the building. There will be slight differences in the internal areas between the same unit types depending on the shaft sizes that go through the units.

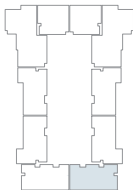
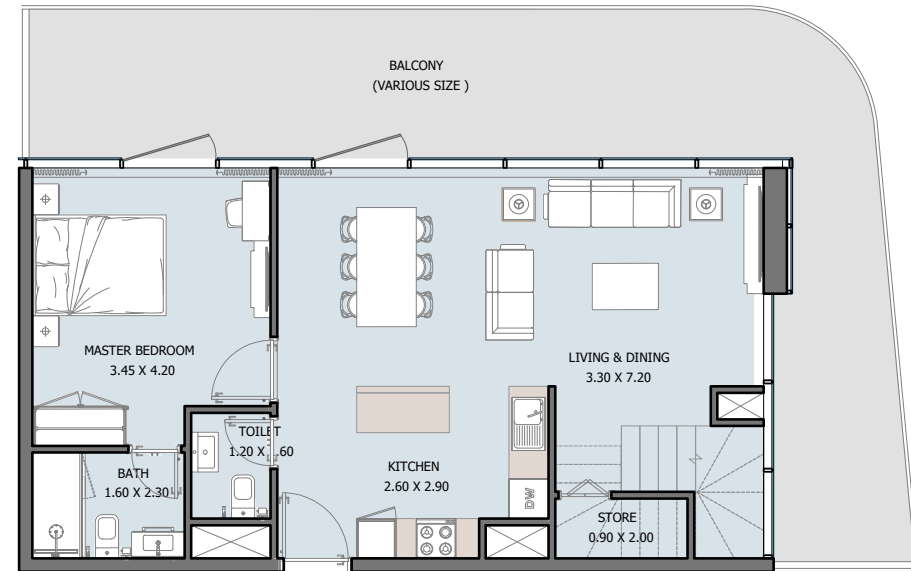
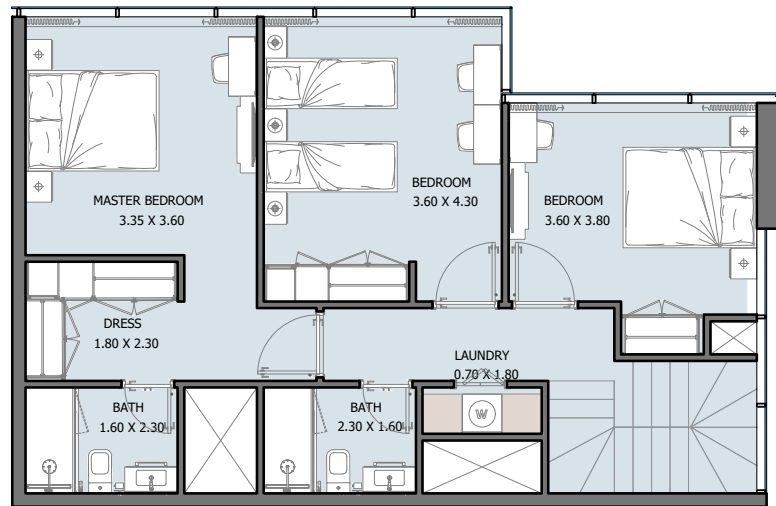


4B Penthouse | Type B

34th Floor

Internal Area	1940.84 sq.ft
Outdoor Area	468.66 sq.ft
Total Area	2409.50 sq.ft

All drawings and dimensions are approximate. Drawings are not to scale and are subject to change without notice. The developer reserves the right to make revisions. The units are measured at typical floors in the building and columns may vary in size depending on the floor level. The furnishing and accessories shown are for representation only. The availability, length and width of the balcony varies depending on which floor and which orientation the unit is located within the building. There will be slight differences in the internal areas between the same unit types depending on the shaft sizes that go through the units.

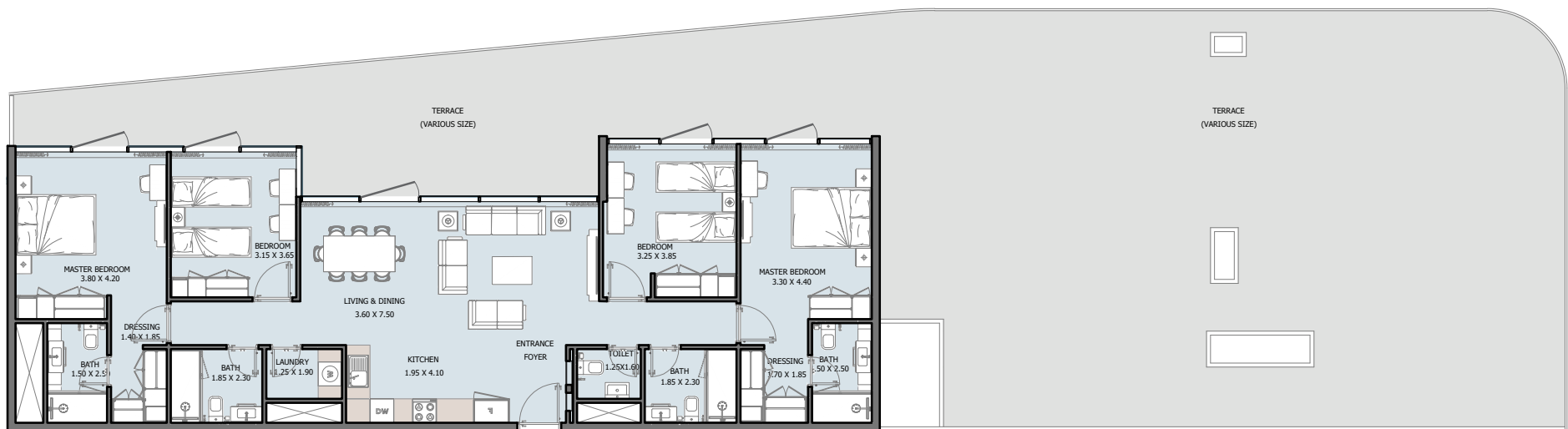


4B Penthouse | Type C

34th Floor

Internal Area	1531.16 sq.ft
Outdoor Area	434.97 sq.ft
Total Area	1966.13 sq.ft

All drawings and dimensions are approximate. Drawings are not to scale and are subject to change without notice. The developer reserves the right to make revisions. The units are measured at typical floors in the building and columns may vary in size depending on the floor level. The furnishing and accessories shown are for representation only. The availability, length and width of the balcony varies depending on which floor and which orientation the unit is located within the building. There will be slight differences in the internal areas between the same unit types depending on the shaft sizes that go through the units.

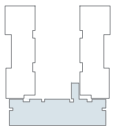
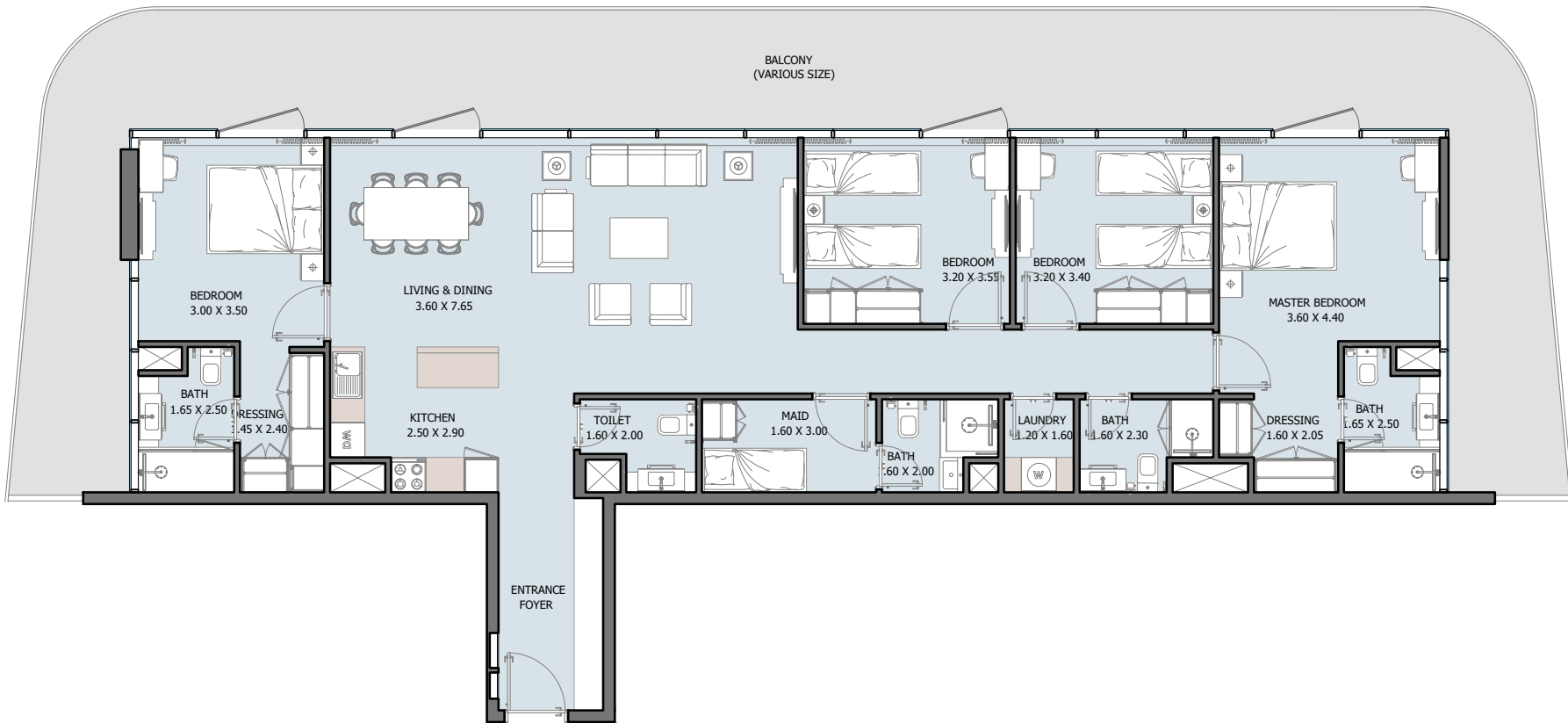


4B Penthouse | Type D

36th Floor

Internal Area	1528.47 sq.ft
Outdoor Area	2503.58 sq.ft
Total Area	4032.05 sq.ft

All drawings and dimensions are approximate. Drawings are not to scale and are subject to change without notice. The developer reserves the right to make revisions. The units are measured at typical floors in the building and columns may vary in size depending on the floor level. The furnishing and accessories shown are for representation only. The availability, length and width of the balcony varies depending on which floor and which orientation the unit is located within the building. There will be slight differences in the internal areas between the same unit types depending on the shaft sizes that go through the units.

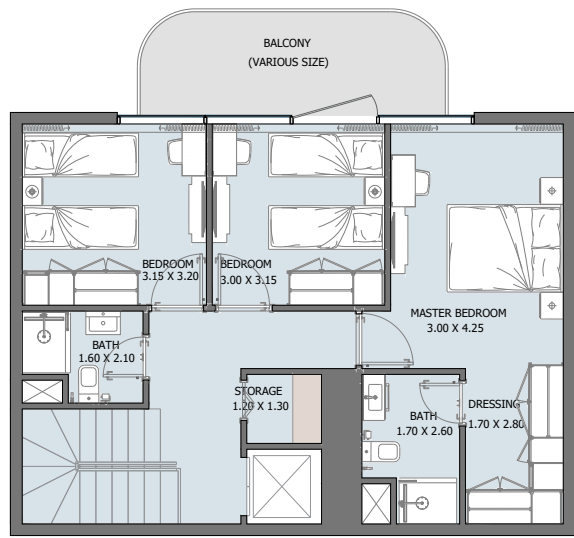
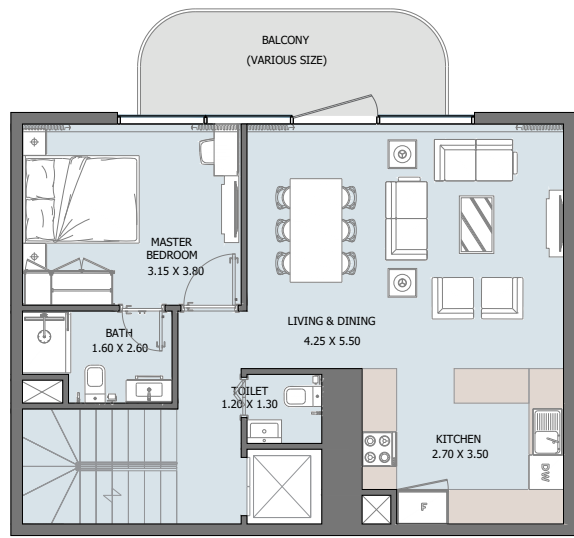
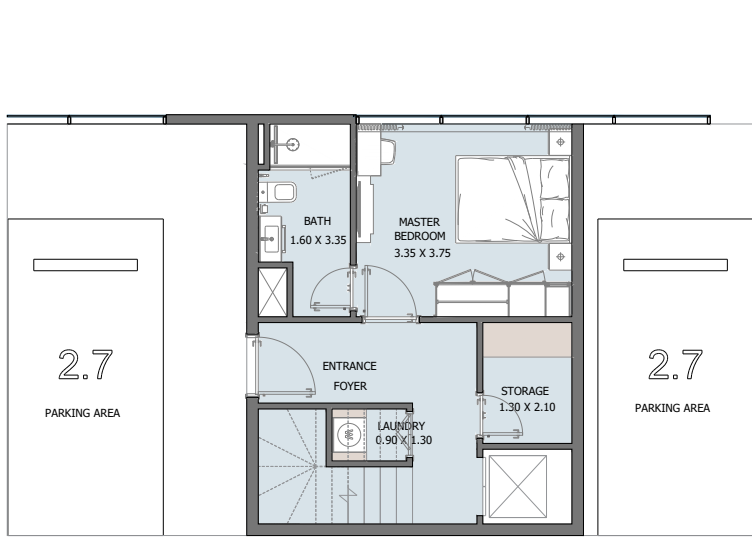


4B Penthouse | Type E

36th Floor

Internal Area	1588.64 sq.ft
Outdoor Area	821.50 sq.ft
Total Area	2410.14 sq.ft

All drawings and dimensions are approximate. Drawings are not to scale and are subject to change without notice. The developer reserves the right to make revisions. The units are measured at typical floors in the building and columns may vary in size depending on the floor level. The furnishing and accessories shown are for representation only. The availability, length and width of the balcony varies depending on which floor and which orientation the unit is located within the building. There will be slight differences in the internal areas between the same unit types depending on the shaft sizes that go through the units.



5B TOWNHOUSE | Type A

P1 Floor

Internal Area	1881.96 sq.ft
Outdoor Area	199.99 sq.ft
Total Area	2081.95 sq.ft

All drawings and dimensions are approximate. Drawings are not to scale and are subject to change without notice. The developer reserves the right to make revisions. The units are measured at typical floors in the building and columns may vary in size depending on the floor level. The furnishing and accessories shown are for representation only. The availability, length and width of the balcony varies depending on which floor and which orientation the unit is located within the building. There will be slight differences in the internal areas between the same unit types depending on the shaft sizes that go through the units.

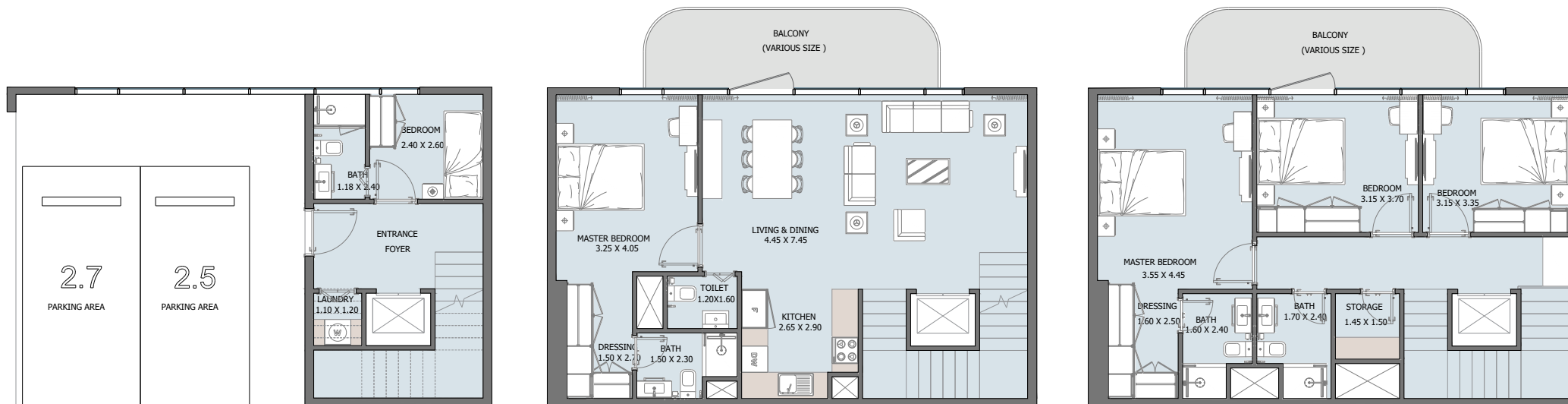


5B TOWNHOUSE | Type B

P1 Floor

Internal Area	1948.05 sq.ft
Outdoor Area	234.87 sq.ft
Total Area	2182.92 sq.ft

All drawings and dimensions are approximate. Drawings are not to scale and are subject to change without notice. The developer reserves the right to make revisions. The units are measured at typical floors in the building and columns may vary in size depending on the floor level. The furnishing and accessories shown are for representation only. The availability, length and width of the balcony varies depending on which floor and which orientation the unit is located within the building. There will be slight differences in the internal areas between the same unit types depending on the shaft sizes that go through the units.



4B TOWNHOUSE | Type F

P1 Floor

Internal Area	1958.38 to 2017.69 sq.ft
Outdoor Area	254.24 to 263.93 sq.ft
Total Area	2212.63 to 2281.62 sq.ft

All drawings and dimensions are approximate. Drawings are not to scale and are subject to change without notice. The developer reserves the right to make revisions. The units are measured at typical floors in the building and columns may vary in size depending on the floor level. The furnishing and accessories shown are for representation only. The availability, length and width of the balcony varies depending on which floor and which orientation the unit is located within the building. There will be slight differences in the internal areas between the same unit types depending on the shaft sizes that go through the units.



4B TOWNHOUSE | Type G

P1 Floor

Internal Area	1463.68 to 1495.11 sq.ft
Outdoor Area	149.62 to 153.49 sq.ft
Total Area	1613.29 to 1648.60 sq.ft

All drawings and dimensions are approximate. Drawings are not to scale and are subject to change without notice. The developer reserves the right to make revisions. The units are measured at typical floors in the building and columns may vary in size depending on the floor level. The furnishing and accessories shown are for representation only. The availability, length and width of the balcony varies depending on which floor and which orientation the unit is located within the building. There will be slight differences in the internal areas between the same unit types depending on the shaft sizes that go through the units.

ريپورتاج العقارية

Reportage.

Properties

Abu Dhabi-UAE | Head Office

Tamouh Tower
28th Floor, Al Reem Island
P.O. Box: 111949
Tollfree: +2 55 77 800 971
info@reportageuae.com

Dubai-UAE

Anantara Business Tower
3rd Floor, Business Bay
P.O. Box: 27446
Tollfree: +2 55 77 800 971
info@reportageuae.com

Cairo-Egypt

Building 217
North Teseen St.
New Cairo
T: +1190 0008 12 20
info@reportageeg.com

Istanbul-Türkiye

Maslak Mh. Sümer Sk.
No:4, İç Kapı No:3, Bodrum Kat,
Maslak Office Building (MOB) Sarıyer
T: +9595 774 530 90
info@reportage.com.tr

Riyadh-KSA

Building No. 3230
Al Aflaj St., Al Suwaidi
P.O. Box 12791
T: +1110 215 11 966
info@reportageuae.com

Moscow-Russia

Yefremova Street 10s1, k4/4
bld sadovye kvartaly
P.O. Box 119048
info@reportagerussia.com

Kampala, Uganda

Plot 4, Philip Road
Near German Embassy
Kololo, Kampala, Uganda
+572 331 763 256+ | 434 111 756 256
info@reportageug.com

Lahore - Pakistan

Plaza No. 185, Broadway
Commercial phase 8, DHA Lahore
+923309991111
Info@reportageempire.com

Kigali, Rwanda

KG 334 ST 10, Nyarutarama,
Kigali, Rwanda
+250794100607+ | 250738532168
info@reportagerw.com

For more information, visit reportageuae.com
or call 800 77 55 2 | +971 50 244 1078



Legal Disclaimer:

The information contained in this brochure is confidential and is for the exclusive use of the recipient. This brochure may not be reproduced, distributed, delivered, or furnished to any person without the prior written approval of Reportage Properties. No representation or warranty (expressed or implied) is made or can be given with respect to the accuracy or completeness of the information herein, or that any future offer of units or apartments in the project will conform to the terms described herein. Nothing in this leaflet should be construed as financial, legal, tax or regulatory advice. All accessories such as electronics, furniture, white goods, decorative elements and so forth included in this brochure are not part of the standard unit and used for illustration purposes only. All plans, layouts, pictures, renderings, information and details included in this brochure are indicative only and may change at any time up to the final 'as built' status in accordance with final designs of the project and regulatory approvals and planning permissions.