



ENAYA
RESIDENCES

📍 Jumeirah Village Triangle

Welcome to Enaya Residences

Enaya Residences is a name synonymous with elegance, innovation, and excellence. Known for our commitment to quality and luxurious living, Enaya Residences proudly presents its latest project on Sheikh Mohammed Bin Zayed Road, Dubai. Our heritage in crafting superior living spaces is now extended to the vibrant heart of Dubai, offering a lifestyle that combines sophistication, comfort, and modernity. The apartments at Enaya Residences are designed to provide extravagant skyline views, state-of-the-art amenities, and an unwavering dedication to your comfort.



Dubai

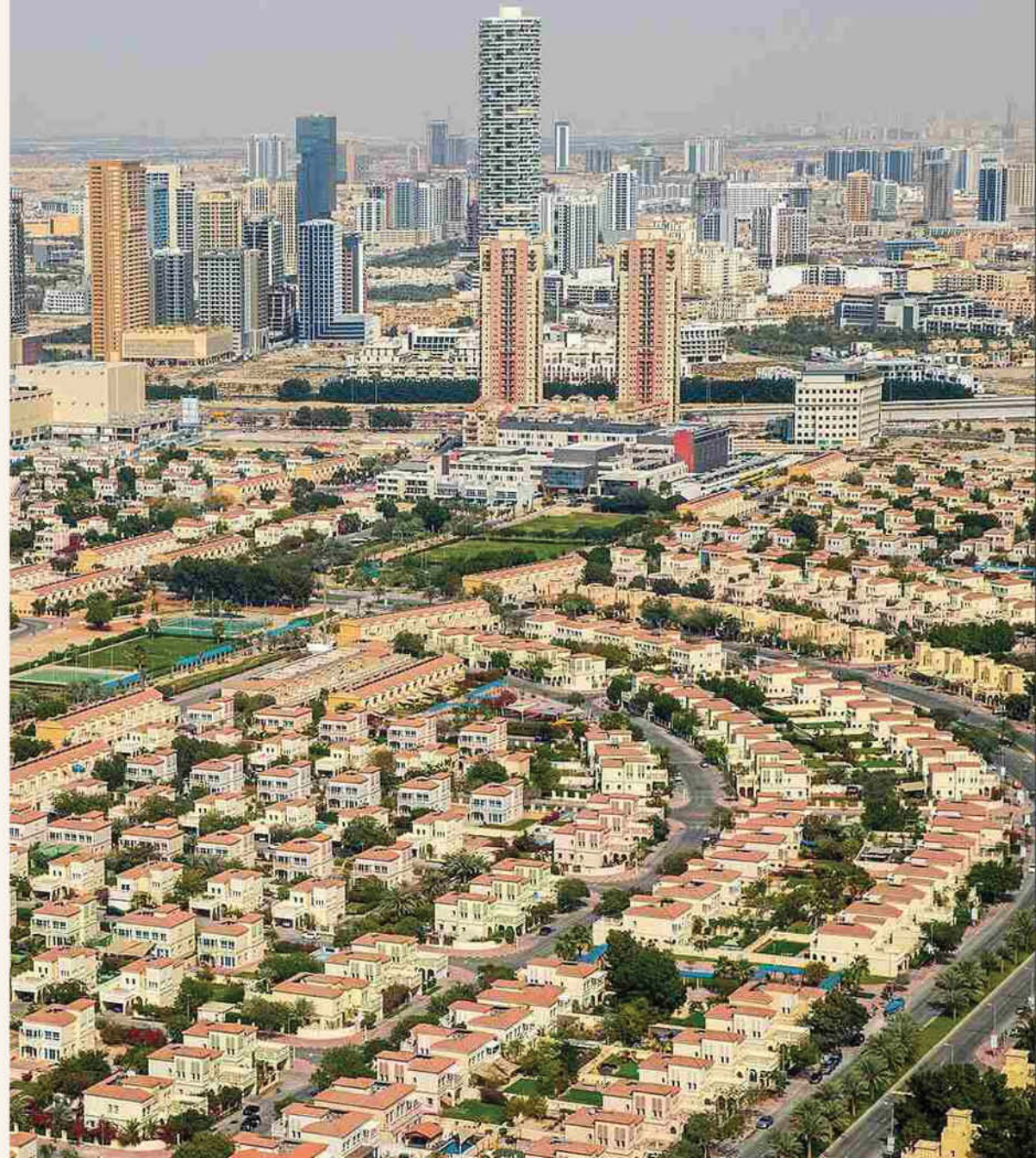
Dubai is a city that is as fascinating as it is beautiful, offering a unique blend of modernity and tradition that makes it stand out from other cities in the world. With its towering skyscrapers, luxurious shopping malls, and world-renowned attractions, Dubai is an iconic destination for both business and leisure. Its strategic location, advanced infrastructure, and business-friendly policies make it a top choice for global investors and entrepreneurs. Additionally, Dubai's vibrant cultural scene, stunning beaches, and year-round sunshine make it a popular choice for those looking for a luxury lifestyle. The real estate market in Dubai is booming, with a wide range of properties available to suit every taste and budget. Thanks to its visionary, highly competent government and strong, sophisticated economy, Dubai is poised to stake its claim as one of the top global cities to both live and invest in.



Jumeirah Village Triangle

Jumeirah Village Triangle (JVT) is a prime residential community nestled in the heart of Dubai, offering a unique combination of convenience and luxury. This vibrant community is known for its peaceful and tranquil surroundings, plentiful green spaces, and stunning architecture, which creates a peaceful haven in the midst of the bustling city.

JVT boasts a variety of housing options, including spacious villas, stylish townhouses, and modern apartments, all designed to meet the needs of different lifestyles and preferences. JVT is also home to a host of amenities, including parks, playgrounds, ensuring that residents have everything they need within easy reach.



The Post - Handover Payment Plan

Booking Amount

5%

30 Days of Booking

15%

Within 120 Days

10%

Within 300 Days

10%

On Completion

10%

Within 480 Days

10%

40 Months Post-Handover

1%

Anticipated Completion - Q1 2026

Prime Location

The Heart of Dubai

Located on Jumeirah Village Triangle, Enaya Residences offers exceptional connectivity and strategic advantage within Dubai's urban landscape. Just minutes away from key business districts, shopping centers, and cultural landmarks, our residence ensures you are at the center of all the action. Experience the best of urban living in a posh locality, well-connected to all the essential hubs of Dubai.

25 Minutes
Dubai Mall

24 Minutes
Burj Al Arab

4 Minutes
Al Khail Road

30 Minutes
Dubai Int'l Airport

30 Minutes
Al Maktoum Int'l Airport

8 Minutes
Gardens Metro Station

20 Minutes
Palm Jumeirah

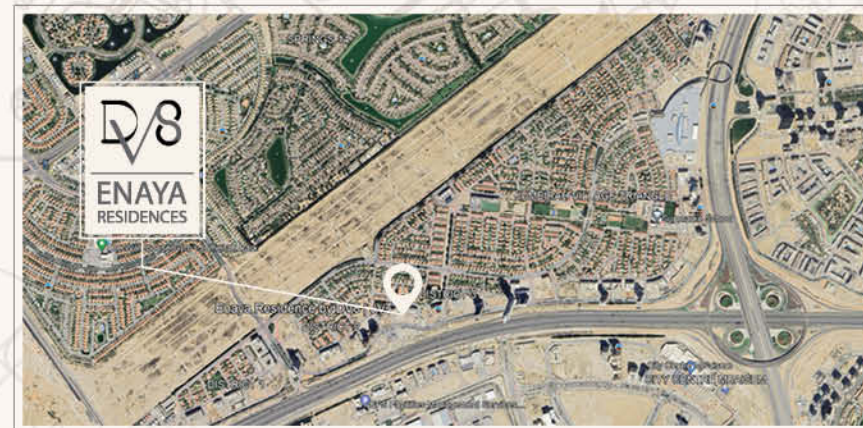
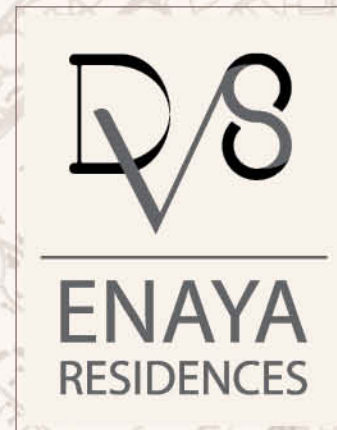
19 Minutes
Mall of the Emirates

23 Minutes
Business Bay

19 Minutes
Dubai Marina

2 Minutes
Sheikh Mohammed Bin Zayed Rd.

15 Minutes
Mediclinic Hospital



Jumeirah Village Triangle



The Epitome of
Modern Living



Luxurious Reception and Lift Lobby

Drawing Room





Elegant
Living Spaces

The image shows a modern living room with a large, white marble wall. A long, low wooden console runs along the base of the wall. A large, dark, rectangular mirror or screen is mounted on the wall. To the right, a tall, thin shelving unit holds various decorative items. A coffee table with a white top and dark base is in the foreground, holding books and glasses. A sofa with a dark blanket is visible on the right. The room is lit by a modern chandelier and two circular wall sconces.

Spacious
Bedrooms



Modern
Bathrooms





State-of-the-Art Kitchen



Stylish
Dining Area



Expansive
Terraces



Gym



Dive into
Luxury

greenvista
Pools & Landscapes



Badminton Court



Landscaping

A 3D architectural rendering of a rooftop barbeque area. The scene features a series of white, rectangular picnic tables and benches arranged on a green lawn. To the left, a large white rectangular structure, likely a barbeque enclosure, stands on a blue-paved area. In the background, a palm tree and a green mesh fence are visible under a blue sky with light clouds. To the right, a planter bed with various green plants and yellow flowers runs along a white wall. A large tree with green leaves and yellow flowers is in the foreground on the right.

Barbeque Area



Kids
Play Area



ENAYA
RESIDENCES

Typical Floor Plan

Unit 101

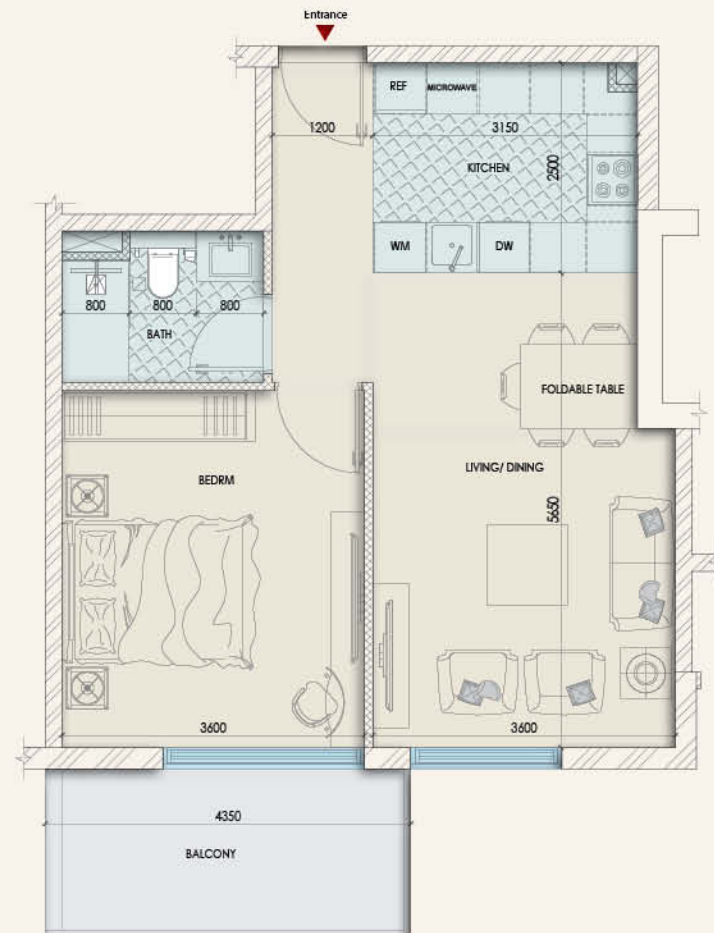
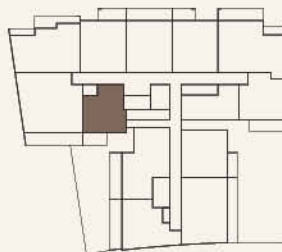
ONE BEDROOM

Type	1 Bed
Size (Sqft.)	694.7
Int. Area	597.4
Areas presented in square feet	

Level 1-5

	Roof
501	05
401	04
301	03
201	02
101	01
	Ground
	Basement

Keyplan



*The images exhibited for illustration purpose only



ENAYA
RESIDENCES

Typical Floor Plan

Unit 102

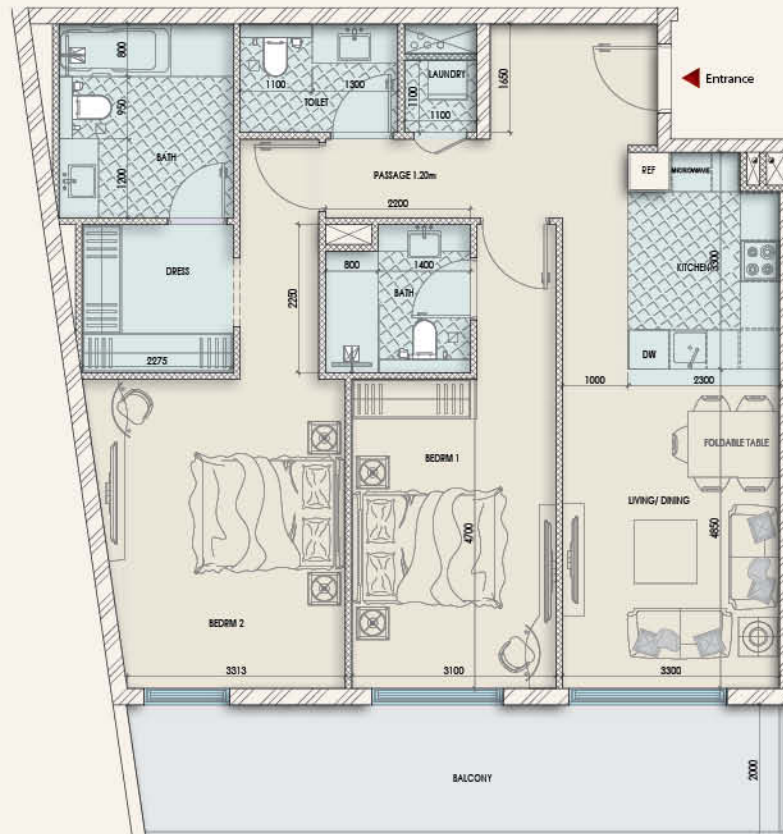
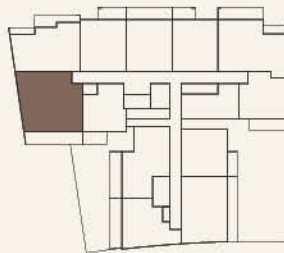
TWO BEDROOM

Type	2 Bed
Size (Sqft.)	1373.91
Int. Area	1145.06
Areas presented in square feet	

Level 1-5

	Roof
502	05
402	04
302	03
202	02
102	01
	Ground
	Basement

Keyplan



*The images exhibited for illustration purpose only



ENAYA
RESIDENCES

Typical Floor Plan

Unit 103

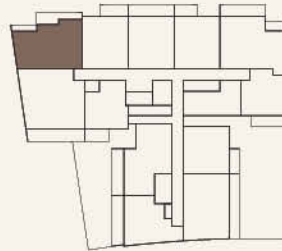
TWO BEDROOM

Type	2 Bed
Size (Sqft.)	1141.51
Int. Area	947.98
Areas presented in square feet	

Level 1-3

	Roof
	05
	04
303	03
203	02
103	01
	Ground
	Basement

Keyplan



*The images exhibited for illustration purpose only



ENAYA
RESIDENCES

Typical Floor Plan

Unit 104

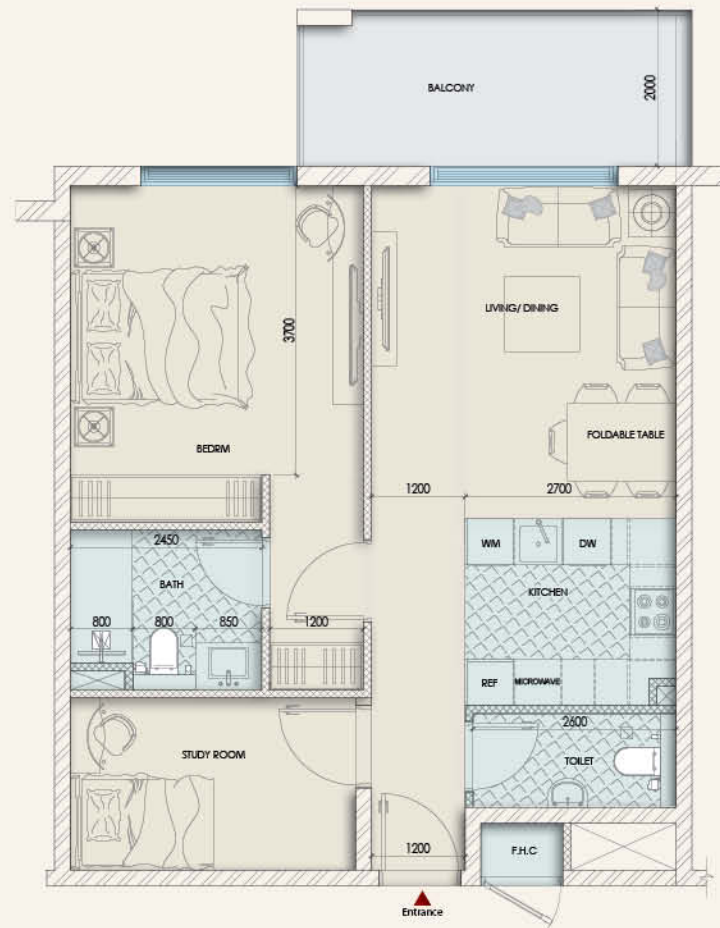
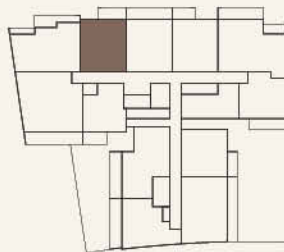
ONE + STUDY BEDROOM

Type	1+St Bed
Size (Sqft.)	853.69
Int. Area	742.71
Areas presented in square feet	

Level 1-3

	Roof
	05
	04
304	03
204	02
104	01
	Ground
	Basement

Keyplan



*The images exhibited for illustration purpose only



ENAYA
RESIDENCES

Typical Floor Plan

Unit 105

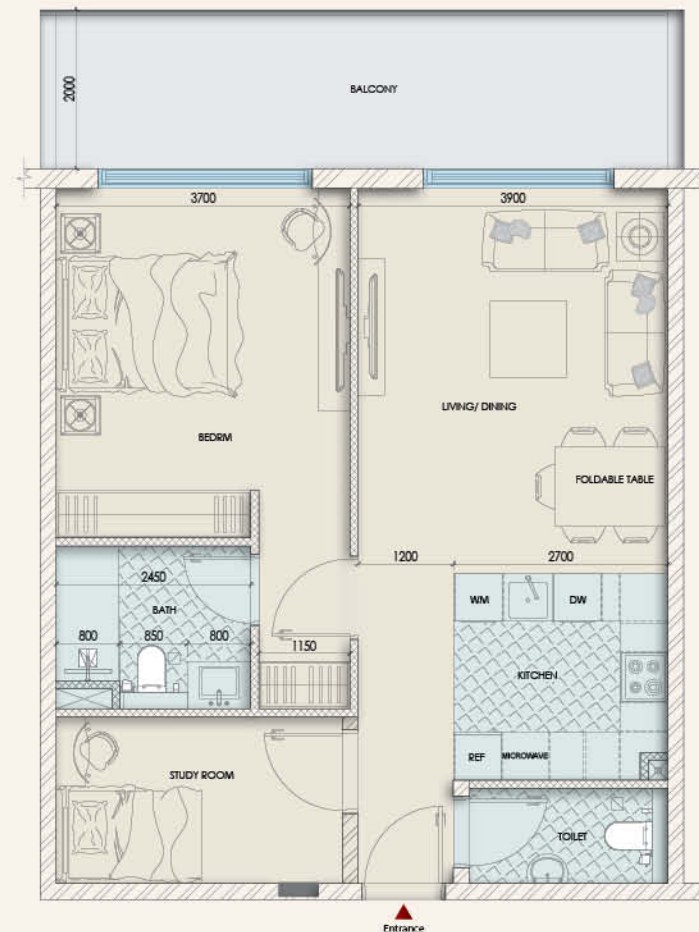
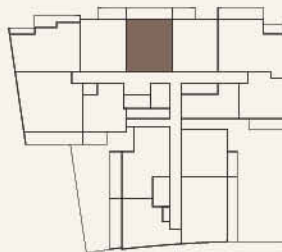
ONE + STUDY BEDROOM

Type	1+St Bed
Size (Sqft.)	938.29
Int. Area	760.04
Areas presented in square feet	

Level 1-3

	Roof
	05
	04
305	03
205	02
105	01
	Ground
	Basement

Keyplan



*The images exhibited for illustration purpose only



ENAYA
RESIDENCES

Typical Floor Plan

Unit 106

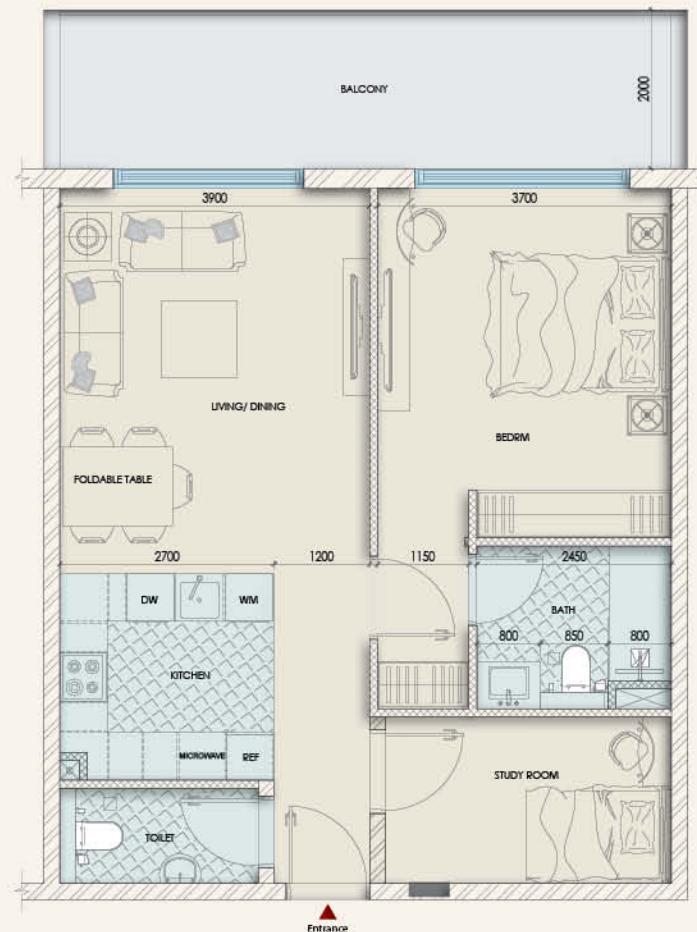
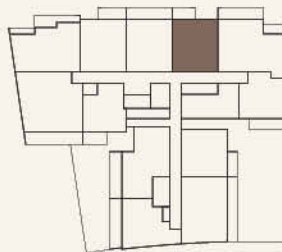
ONE + STUDY BEDROOM

Type	1+St Bed
Size (Sqft.)	847.66
Int. Area	759.29
Areas presented in square feet	

Level 1-3

	Roof
	05
	04
306	03
206	02
106	01
	Ground
	Basement

Keyplan



*The images exhibited for illustration purpose only



ENAYA
RESIDENCES

Typical Floor Plan

Unit 107

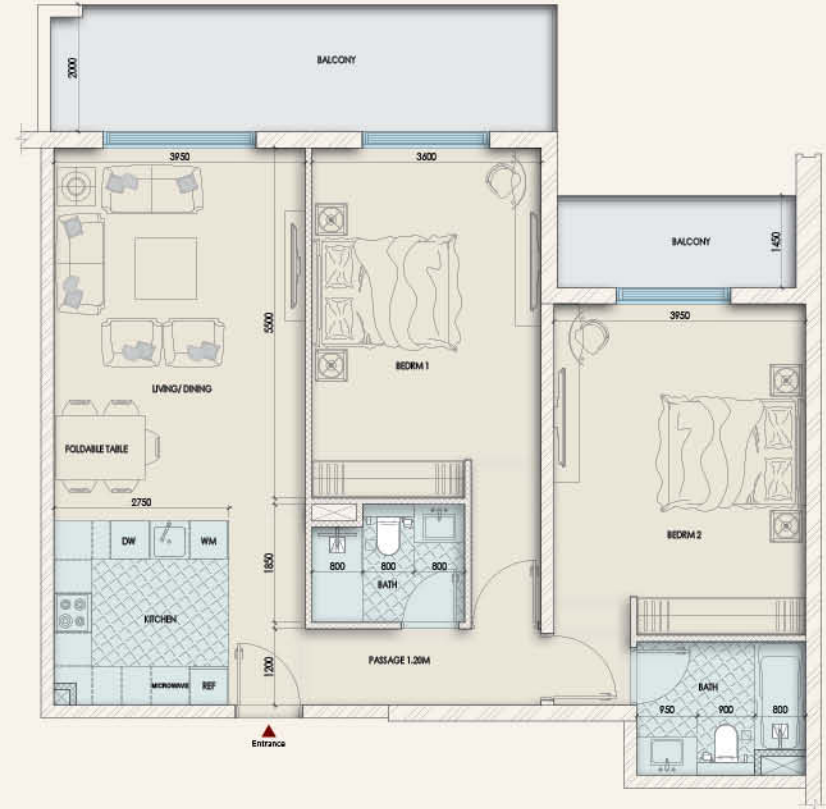
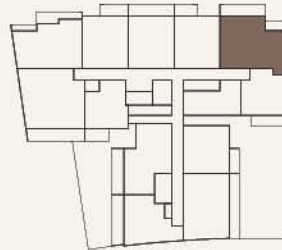
TWO BEDROOM

Type	2 Bed
Size (Sqft.)	1330.42
Int. Area	1081.34
Areas presented in square feet	

Level 1-3

	Roof
	05
	04
307	03
207	02
107	01
	Ground
	Basement

Keyplan



*The images exhibited for illustration purpose only



ENAYA
RESIDENCES

Typical Floor Plan

Unit 109

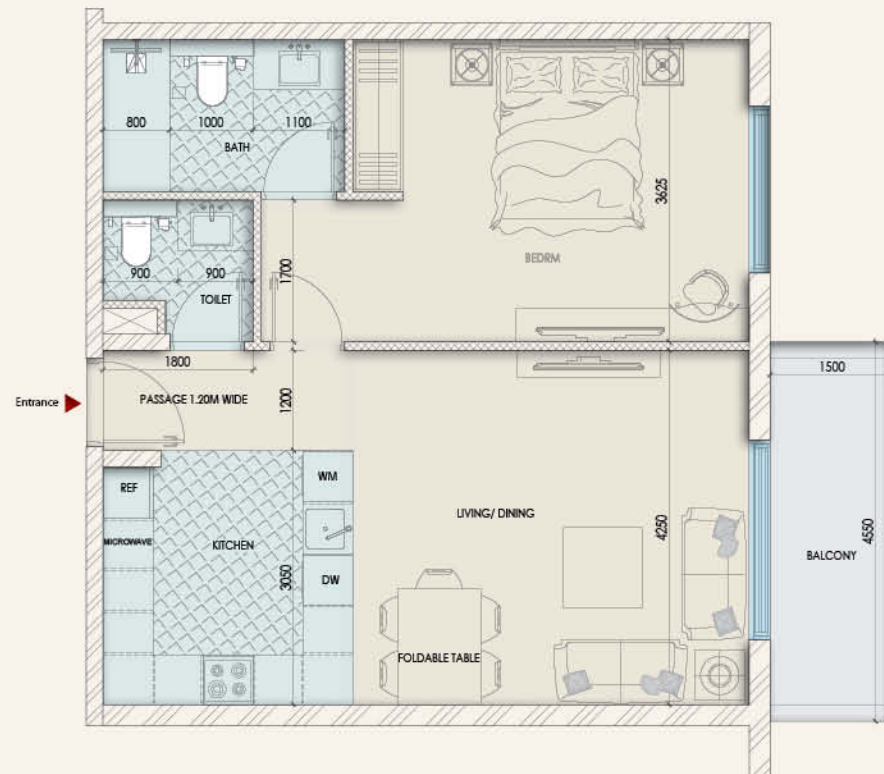
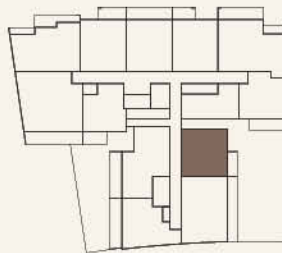
ONE BEDROOM

Type	1 Bed
Size (Sqft.)	776.83
Int. Area	702.02
Areas presented in square feet	

Level 1-5

	Roof
509	05
409	04
309	03
209	02
109	01
	Ground
	Basement

Keyplan



*The images exhibited for illustration purpose only



ENAYA
RESIDENCES

Typical Floor Plan

Unit 110

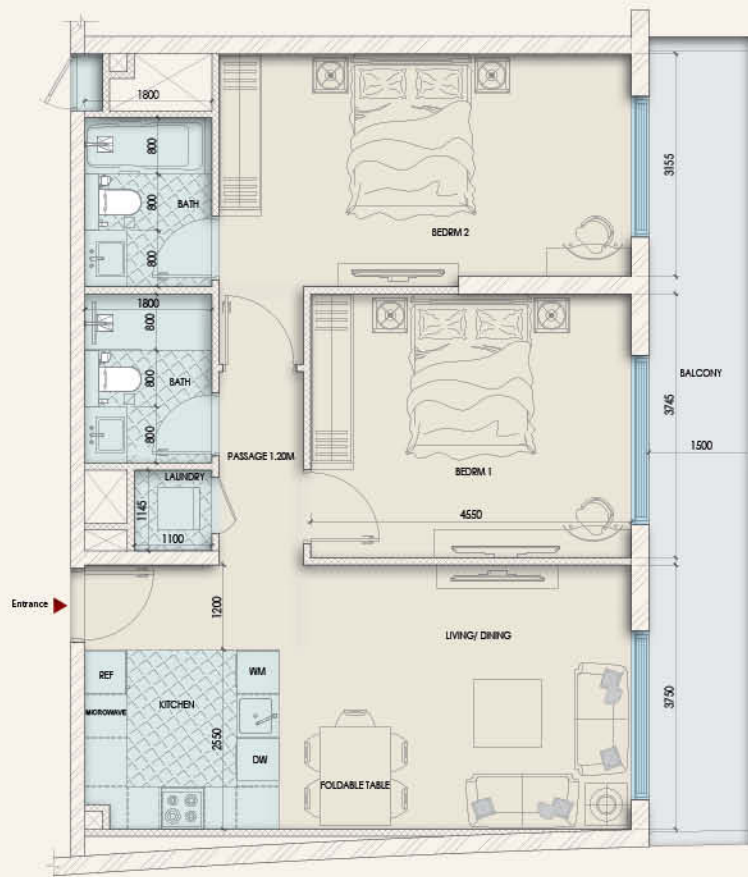
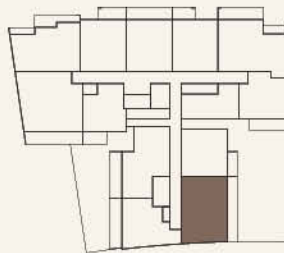
TWO BEDROOM

Type	2 Bed
Size (Sqft.)	1143.77
Int. Area	949.81
Areas presented in square feet	

Level 1-5

	Roof
510	05
410	04
310	03
210	02
110	01
	Ground
	Basement

Keyplan



*The images exhibited for illustration purpose only



ENAYA
RESIDENCES

Typical Floor Plan

Unit 112

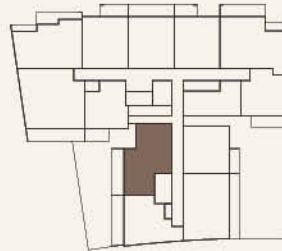
TWO BEDROOM

Type	2 Bed
Size (Sqft.)	1049.8
Int. Area	864.56
Areas presented in square feet	

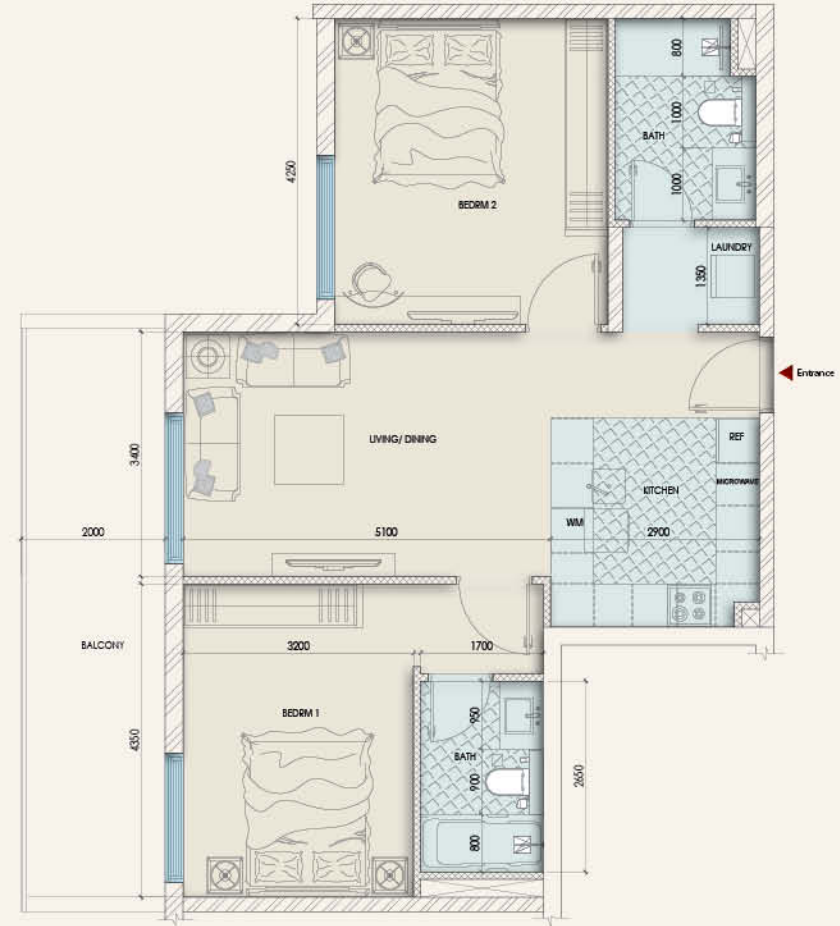
Level 1-5

	Roof
512	05
412	04
312	03
212	02
112	01
	Ground
	Basement

Keyplan



*The images exhibited for illustration purpose only





ENAYA
RESIDENCES

Typical Floor Plan

Unit 111

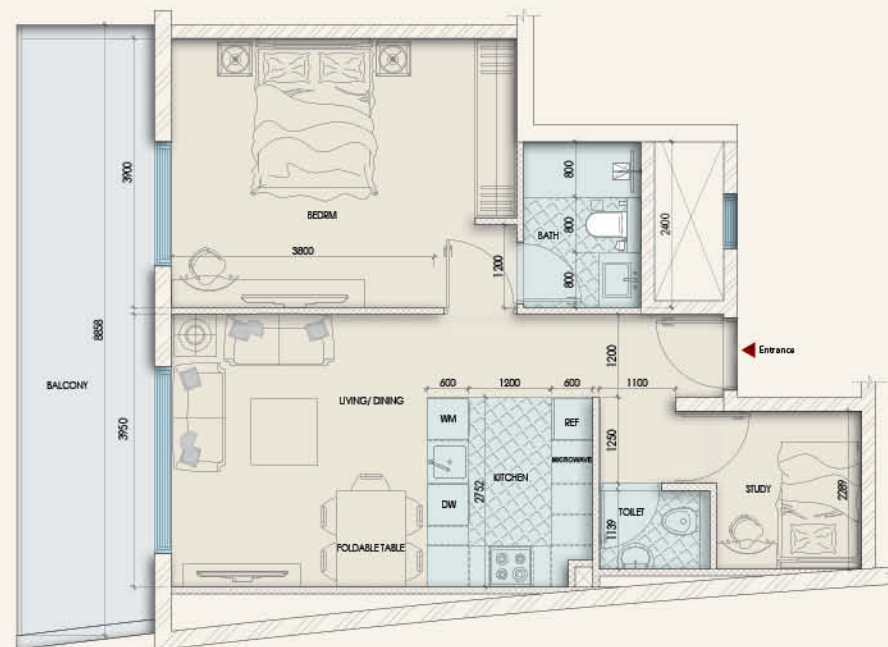
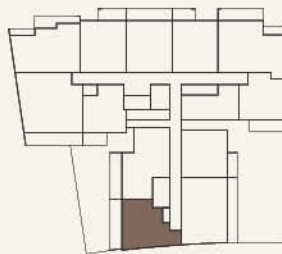
ONE +STUDY BEDROOM

Type	1+St. Bed
Size (Sqft.)	917.52
Int. Area	717.74
Areas presented in square feet	

Level 1-5

	Roof
511	05
411	04
311	03
211	02
111	01
	Ground
	Basement

Keyplan



*The images exhibited for illustration purpose only



ENAYA
RESIDENCES

Typical Floor Plan

Unit 208

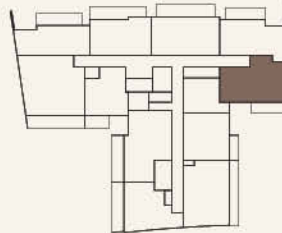
TWO BEDROOM

Type	2 Bed
Size (Sqft.)	1035.49
Int. Area	900.19
Areas presented in square feet	

Level 2-5

	Roof
507	05
407	04
308	03
208	02
	01
	Ground
	Basement

Keyplan



*The images exhibited for illustration purpose only



ENAYA
RESIDENCES

Typical Floor Plan

Unit 403

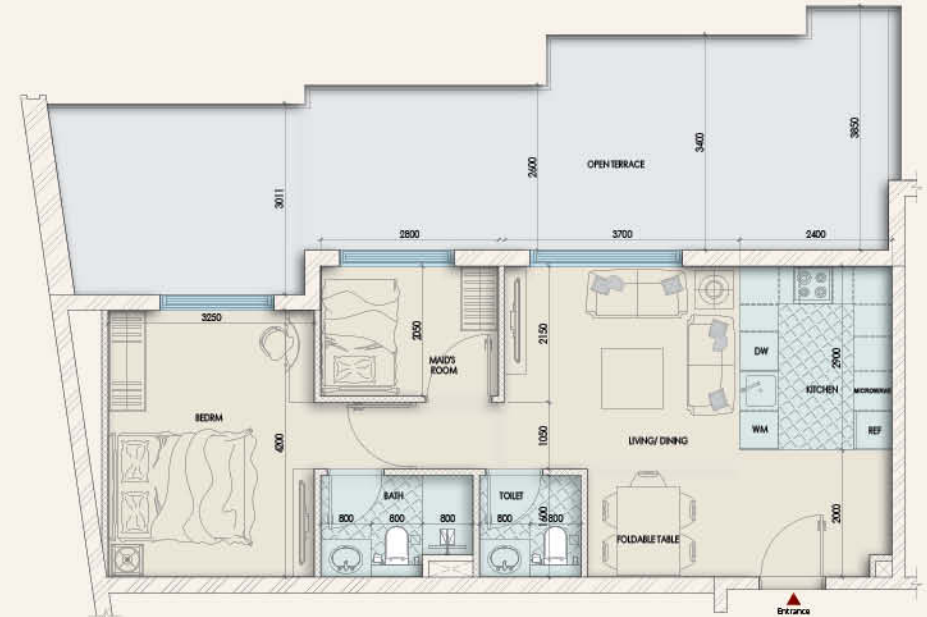
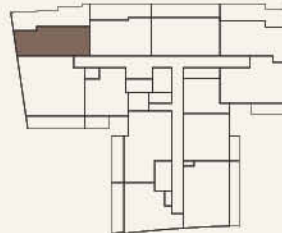
ONE + STUDY BEDROOM

Type	1+St. Bed
Size (Sqft.)	1143.77
Int. Area	683.08
Areas presented in square feet	

Level 4

	Roof
	05
403	04
	03
	02
	01
	Ground
	Basement

Keyplan



*The images exhibited for illustration purpose only



ENAYA
RESIDENCES

Typical Floor Plan

Unit 404

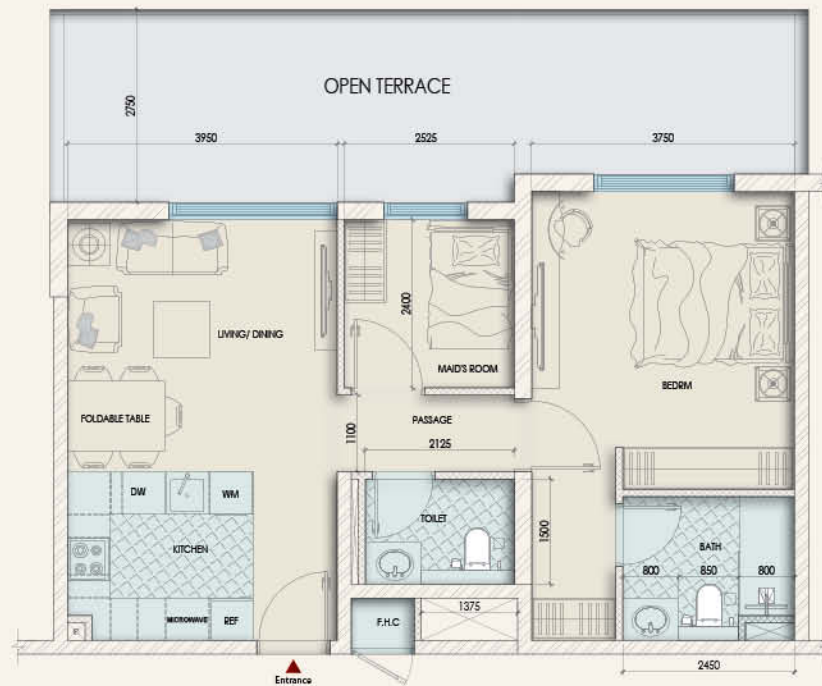
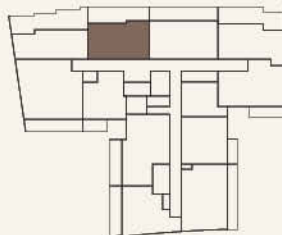
ONE + STUDY BEDROOM

Type	1+St. Bed
Size (Sqft.)	1005.56
Int. Area	696.53
Areas presented in square feet	

Level 4

	Roof
	05
404	04
	03
	02
	01
	Ground
	Basement

Keyplan



*The images exhibited for illustration purpose only



ENAYA
RESIDENCES

Typical Floor Plan

Unit 405

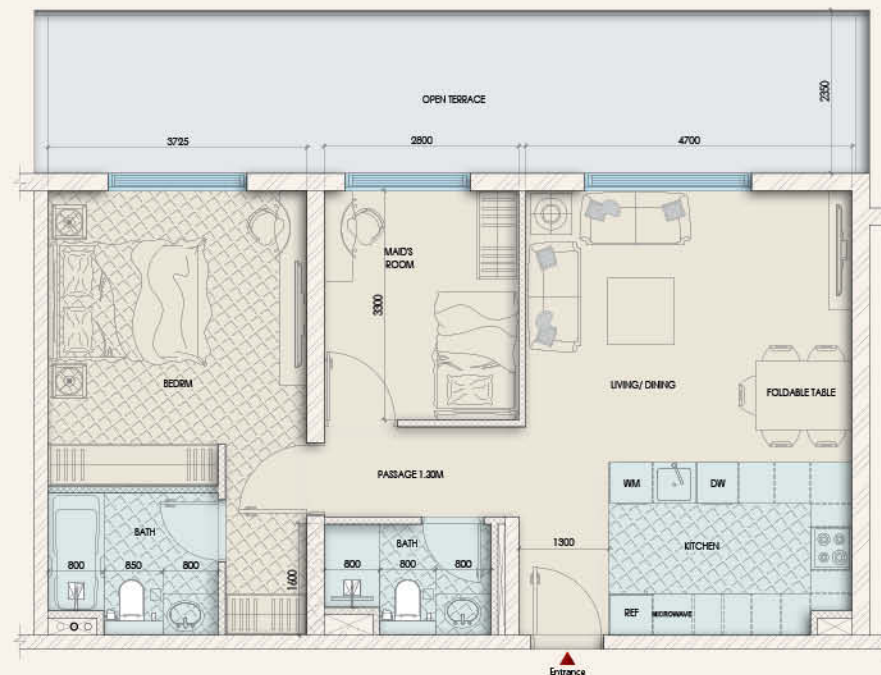
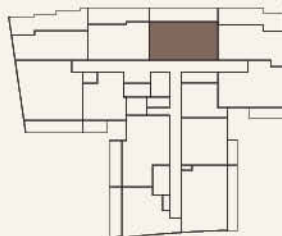
ONE + STUDY BEDROOM

Type	1+St. Bed
Size (Sqft.)	1139.79
Int. Area	828.07
Areas presented in square feet	

Level 4

	Roof
	05
405	04
	03
	02
	01
	Ground
	Basement

Keyplan



*The images exhibited for illustration purpose only



ENAYA
RESIDENCES

Typical Floor Plan

Unit 406

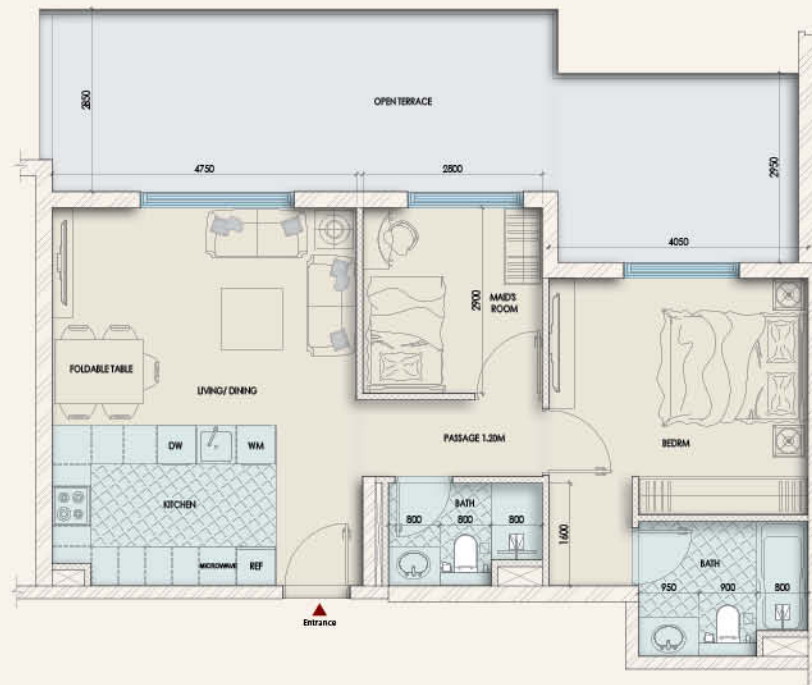
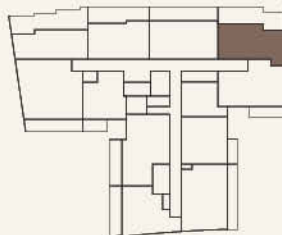
ONE + STUDY BEDROOM

Type	1+St. Bed
Size (Sqft.)	1151.74
Int. Area	766.5
Areas presented in square feet	

Level 4

	Roof
	05
406	04
	03
	02
	01
	Ground
	Basement

Keyplan



*The images exhibited for illustration purpose only



ENAYA
RESIDENCES

Typical Floor Plan

Unit 503

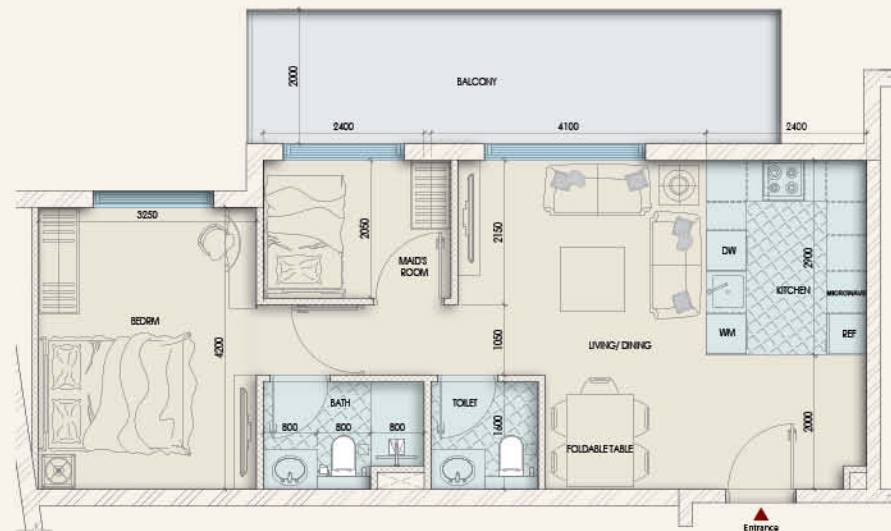
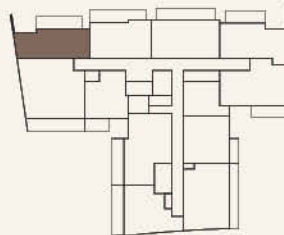
ONE + STUDY BEDROOM

Type	1+St. Bed
Size (Sqft.)	862.62
Int. Area	683.08
Areas presented in square feet	

Level 5

	Roof
503	05
	04
	03
	02
	01
	Ground
	Basement

Keyplan



*The images exhibited for illustration purpose only



ENAYA
RESIDENCES

Typical Floor Plan

Unit 504

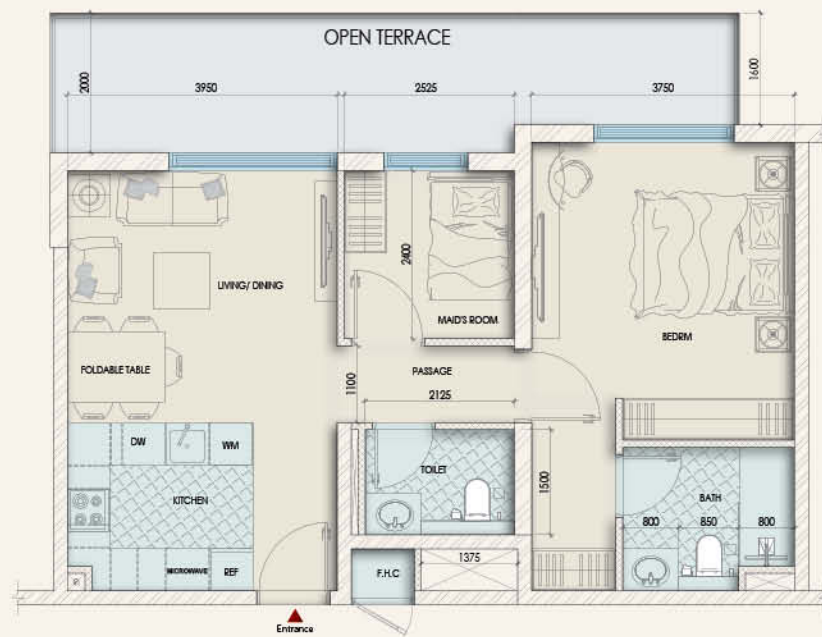
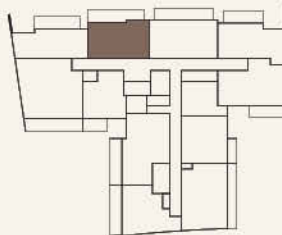
ONE + STUDY BEDROOM

Type	1+St. Bed
Size (Sqft.)	904.71
Int. Area	695.99
Areas presented in square feet	

Level 5

	Roof
504	05
	04
	03
	02
	01
	Ground
	Basement

Keyplan



*The images exhibited for illustration purpose only



ENAYA
RESIDENCES

Typical Floor Plan

Unit 505

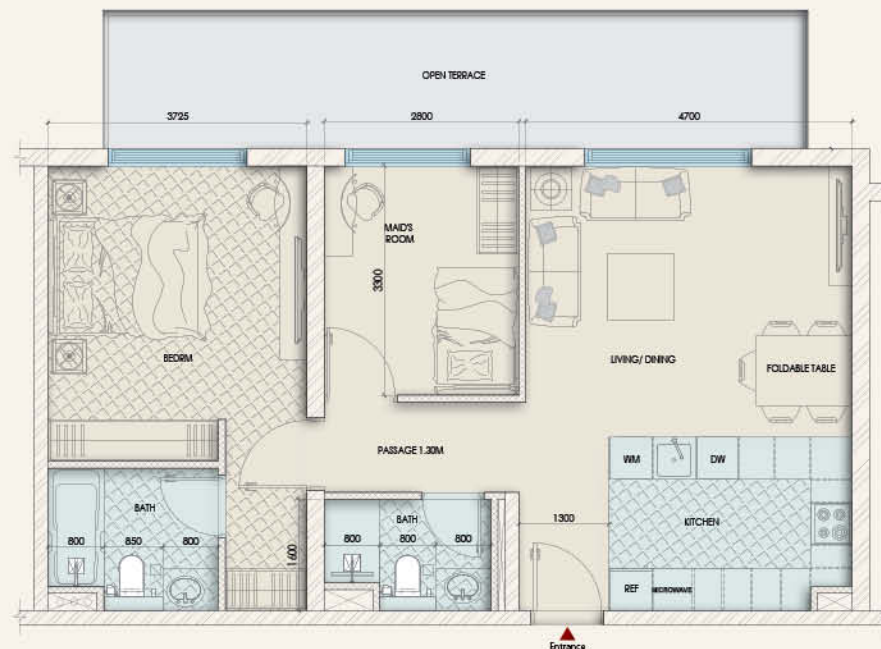
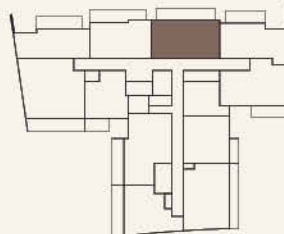
ONE + STUDY BEDROOM

Type	1+St. Bed
Size (Sqft.)	1056.15
Int. Area	827.64
Areas presented in square feet	

Level 5

	Roof
505	05
	04
	03
	02
	01
	Ground
	Basement

Keyplan



*The images exhibited for illustration purpose only



ENAYA
RESIDENCES

Typical Floor Plan

Unit 506

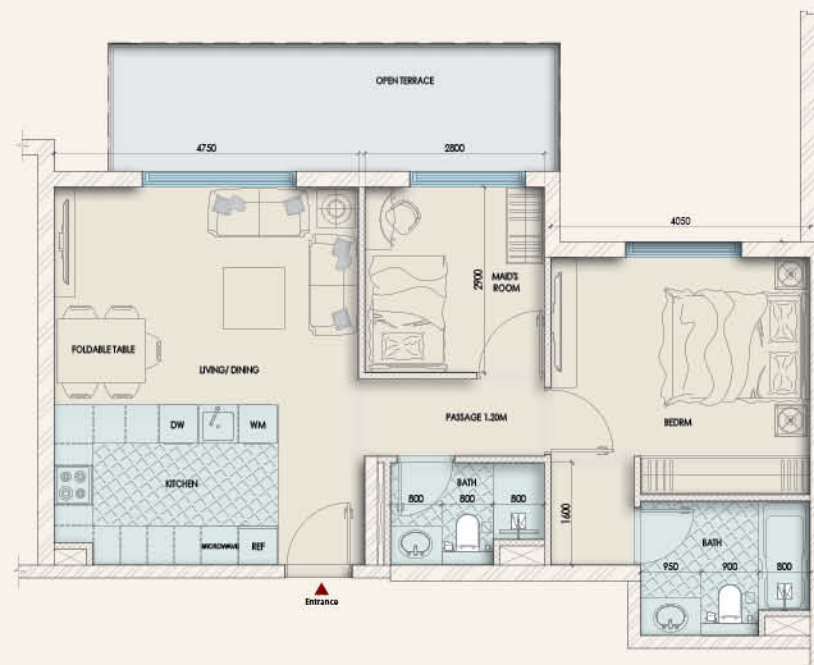
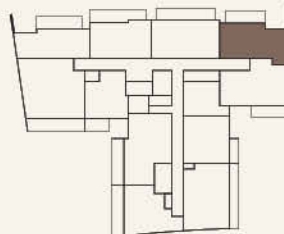
ONE + STUDY BEDROOM

Type	1+St. Bed
Size (Sqft.)	924.62
Int. Area	765.85
Areas presented in square feet	

Level 5

	Roof
506	05
	04
	03
	02
	01
	Ground
	Basement

Keyplan



*The images exhibited for illustration purpose only



Previous Project

Bali Residences

In Jumeirah Village Triangle



Upcoming Project

Trafford Residences

In Dubai South



