



HMB HOMES
REAL ESTATE DEVELOPMENT

ONE BEVERLY

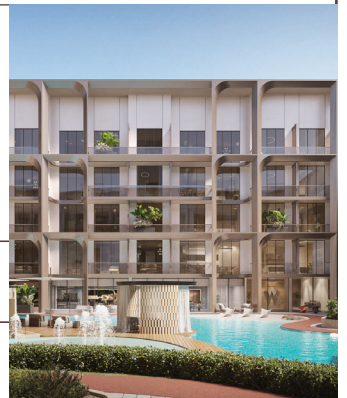
FACTSHEET



A LIFE SHAPED BY ART | ONE BEVERLY

Drawing inspiration from the timeless elegance of Art Deco and the enchanting romance of Paris, One Beverly invites you to a realm where settling means embracing the extraordinary. It is not merely a place to live; it is a canvas of unparalleled luxury, where art and impeccable design converge to create a sanctuary of sophistication.

Each space is a work of art, thoughtfully designed to integrate opulent amenities, lavish details, cutting-edge technology, and sweeping, breathtaking views. One Beverly elevates your lifestyle to unprecedented heights, redefining the very notion of luxury living into an experience that transcends the ordinary.



Arjan is a distinguished residential community in Dubai, effortlessly combining modern comforts with a close-knit neighborhood feel. Its welcoming environment and range of upscale living options attract those who desire a sophisticated yet lively lifestyle. By harmonizing contemporary luxuries, including high-end homes and amenities, with a vibrant community spirit, Arjan perfectly embodies the ideal mix of elegance, connectivity, and endless opportunities for its residents.



EMBRACE THE TRIFECTA

One Beverly stands as a beacon of unrivaled luxury, opulence, and glamour—a masterpiece that not only redefines grandeur but embodies it with every detail. Here, superior design meets extraordinary significance, creating a living experience that transcends the ordinary.

With a curated collection of exquisitely designed apartments, One Beverly is the crown jewel of Dubai's most eagerly awaited residential developments. As our flagship project, it offers an extraordinary community lifestyle, featuring an exquisite selection of studio, one-bedroom, and two-bedroom residences, all enriched with a wealth of luxurious amenities designed to elevate every moment.

AMENITIES •



Multipurpose Area



Water Fountain



Outdoor Basket Ball Court



Open Cinema



Beach Pool



Kids Pool



Splash Pad



Lagoon with Tiered Sand Sitting Area



Pool Side Cabana



Landscape Area



Zen Garden



Zen Yoga



Spa



Sauna



Jacuzzi



Sunken Sitting with Fire Pit



Indoor Gym



Aqua Gym



Outdoor Golf



Outdoor Family Lounge



Open Air Gym



Outdoor Kids Play Area



Jogging Track



Rope Climbing



Water Slide



BBQ Area



Trampoline



Outdoor Kids Boxing



Home Automation



Aqua Kids Playing Area





ONE BEVERLY UNITS

Studio Apartments

370 sqft - 390 sqft

Price **650,000 - 700,000 AED**

1 Bedroom Apartments

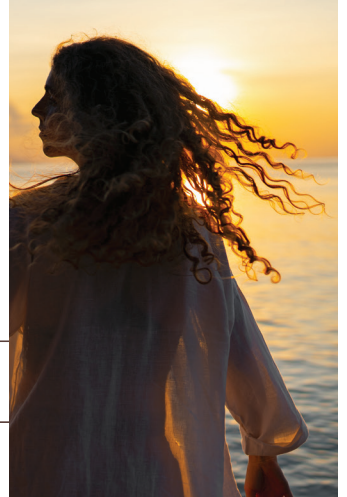
600 sqft - 700 sqft

Price **950,000 - 1,100,000 AED**

2 Bedroom Apartments

1100 sqft - 1650 sqft

Price **1.5 Million - 1.85 Million AED**



PAYMENT PLAN

20%

ON BOOKING

10%

AFTER 60 DAYS

10%

20% COMPLETION

10%

40% COMPLETION

10%

60% COMPLETION

40%

100% COMPLETION



HMB HOMES
REAL ESTATE DEVELOPMENT

The Developer

HMB Homes Real Estate Development is all about pushing the boundaries of what is possible in terms of residential development, and our portfolio of projects is a testament to that. From iconic, sought-after destinations to one-of-a-kind residential spaces, providing a genuinely enriching living experience for the people of Dubai. In the past HMB Homes have handed over AED 250 million worth inventory comprising of villas & townhouses. Beverly Boulevard is worth AED 175 million and HMB aims delivering residential developments about AED 300 million across various sought-after areas of Dubai.

THE UNIQUE FEATURES OF HMB HOMES

Snagging is done in all other developers 1 time, in HMB Homes it's 3 times. (No delay)

Walnut wood doors are fireproof for up to one hour for family safety.

Noise-canceling windows, walls and floors. (No construction noise)

100mm pipes to ensure smooth drainage.

Use high-quality German appliances.

Balcony railings are sealed to prevent dust with floors designed for automatic water drainage.

Our kitchens have microfiber wood for enhanced quality and durability.

7 layers of walls and 6 layers of flooring. (waterproof – humidity proof)

24/7 property management to monitor and resolve any issues before they impact the apartment.

An additional 10 cm gap is included to accommodate building expansion and contraction.