

# SEASIDE

BY PRESTIGE ONE



PRESTIGE ONE



# WAVE HELLO TO LUXURY

Enjoy the ultimate experience of island living in the city  
at Seaside by Prestige One, the latest residential development in  
Dubai Islands.







INTRODUCING  
SEASIDE



Seaside by Prestige One offers an exclusive retreat that harmonises the luxuries of urban living with the serene ambience of island life.

Designed with sophistication, each residence boasts floor-to-ceiling windows and expansive balconies that invite the surrounding seascape into every home.

The architecture features a modern design, with clean lines and a tiered structure that allows for privacy while accentuating the panoramic views.



LIFE BETWEEN THE CITY  
AND THE SEA





SEA THE  
PEAK OF LUXURY





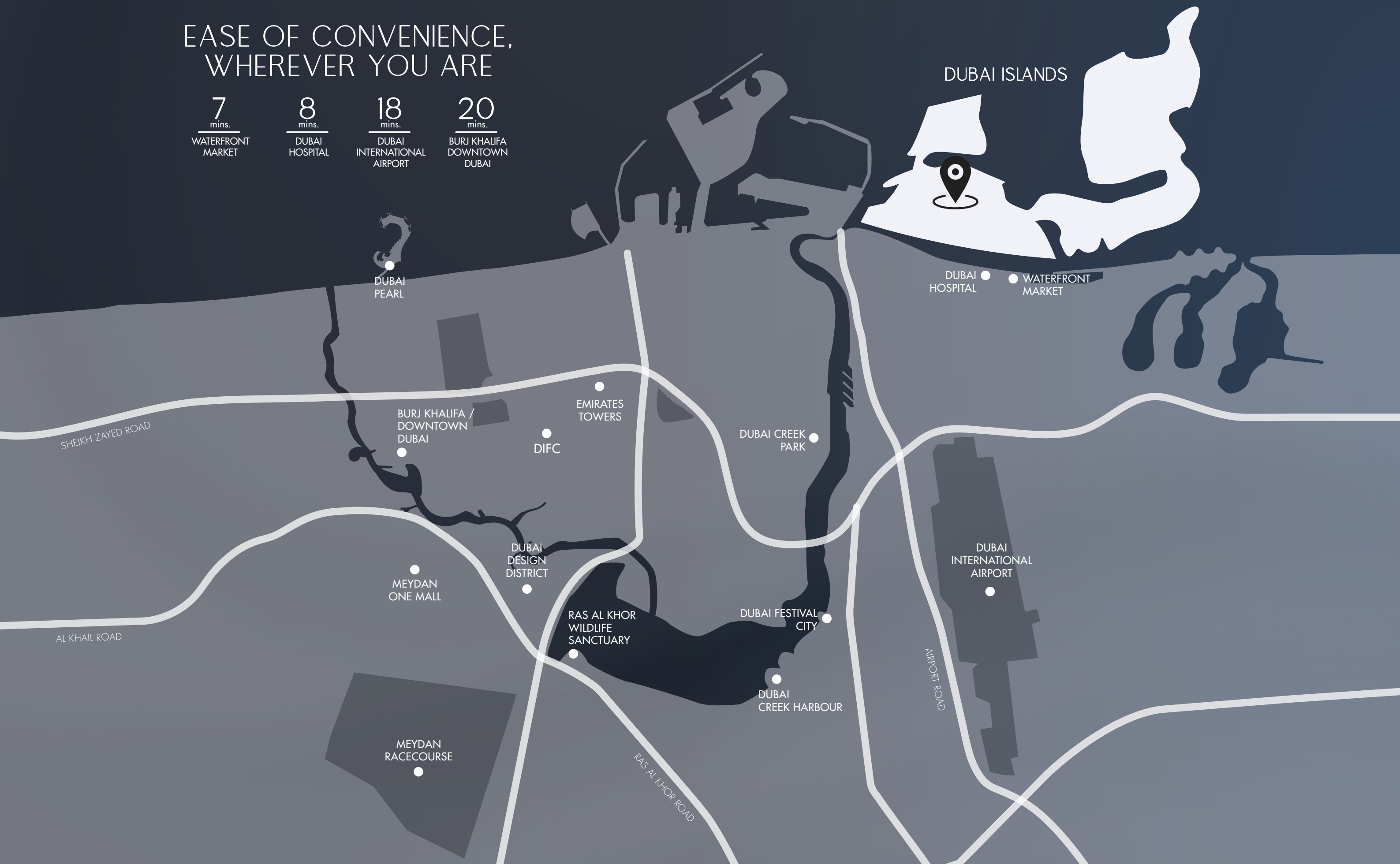
# EASE OF CONVENIENCE, WHEREVER YOU ARE

7  
mins.  
WATERFRONT  
MARKET

8  
mins.  
DUBAI  
HOSPITAL

18  
mins.  
DUBAI  
INTERNATIONAL  
AIRPORT

20  
mins.  
BURJ KHALIFA  
DOWNTOWN  
DUBAI





# SEASIDE

5  
mins.

CENTARA  
MIRAGE  
BEACH  
RESORT

5  
mins.

RIU  
PALACE  
DUBAI  
ISLAND

1  
mins.

DUBAI  
ISLANDS  
MALL

6  
mins.

DUBAI  
ISLANDS  
BEACH

5  
mins.

SOUQ AL  
MARFA

7  
mins.

DUBAI  
ISLANDS  
MARINA



SOON TO RISE  
IN THE HEART OF DUBAI ISLANDS



LEVEL  
CONIGURATION



ROOFTOP

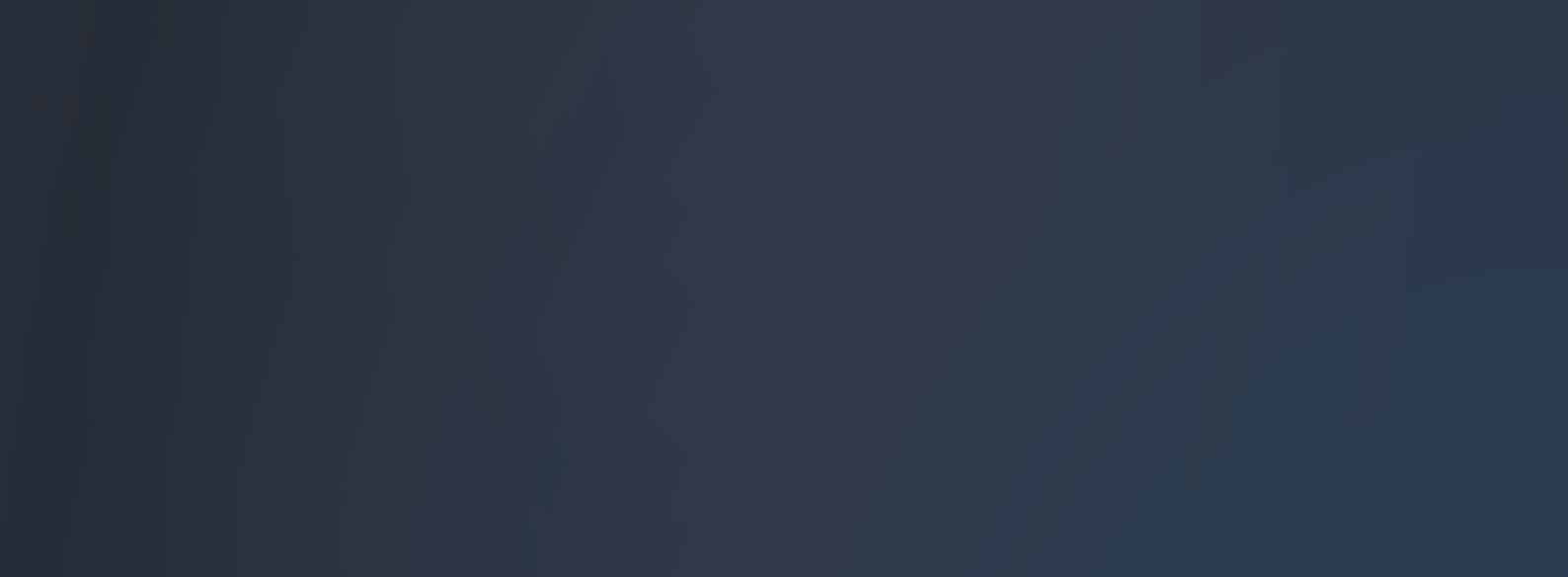
RESIDENCES

PODIUM / 1<sup>st</sup> FLOOR

CAR PARK

GROUND FLOOR / RETAIL





Seaside by Prestige One takes luxury living to the next level. Each aspect of the building is designed to elevate your experience of comfort and sophistication.





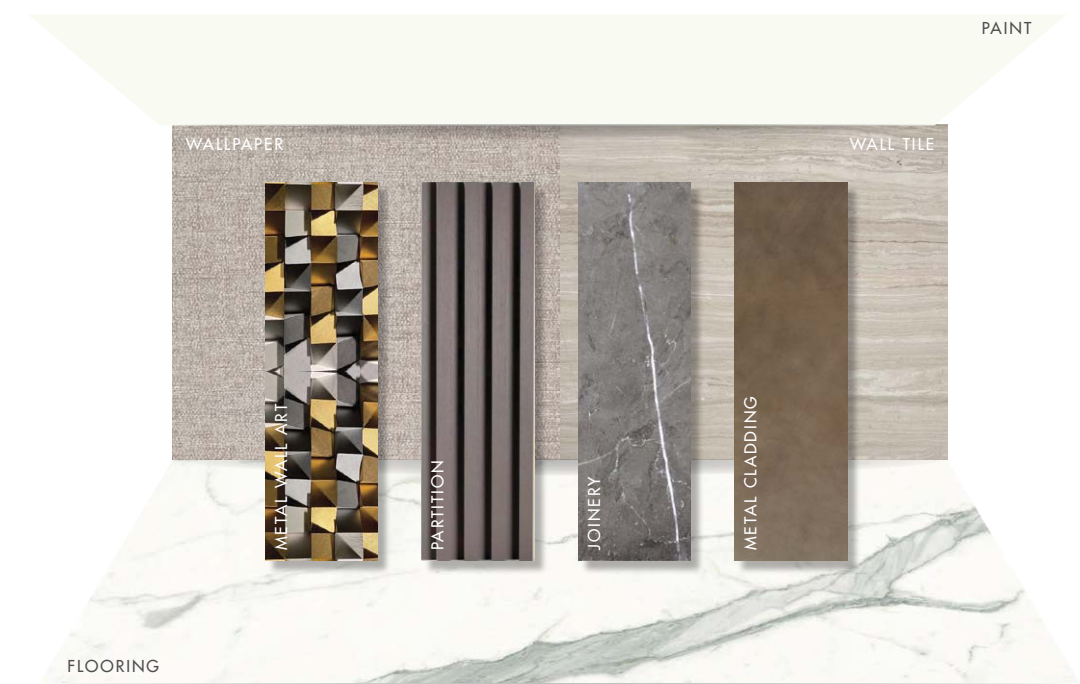
WELCOME  
TO YOUR NEW HAVEN



Embrace the serenity of Seaside by Prestige One's lobby, a space thoughtfully designed to be your sanctuary from the moment you arrive.



ENTRANCE LOBBY | LOBBY LIFT CORRIDOR







TYPICAL LIFT LOBBY AND CORRIDOR





A modern penthouse with a rooftop pool and lounge area. The building features large glass windows and balconies. The rooftop area includes a swimming pool, lounge chairs, a wooden deck, and a large outdoor screen displaying a sailboat. The scene is set against a city skyline and a clear sky.

FIVE-STAR RESORT AMBIENCE  
INSIDE YOUR HOME



# EXCLUSIVE AMENITIES

Seaside by Prestige One presents a suite of refined amenities for an elevated waterfront living experience.



ELECTRIC CAR  
PARKING/CHARGING



GRAND  
DOUBLE-HEIGHT  
LOBBY



SPA  
POOLS



SWIMMING  
POOL



KID'S POOL &  
FOUNTAINS



KID'S PLAY  
AREA



MINI PUTT  
GOLF



BBQ  
AREA



GYM &  
CHANGING ROOMS



OUTDOOR CINEMA  
& LAWN





MINI PUTT GOLF

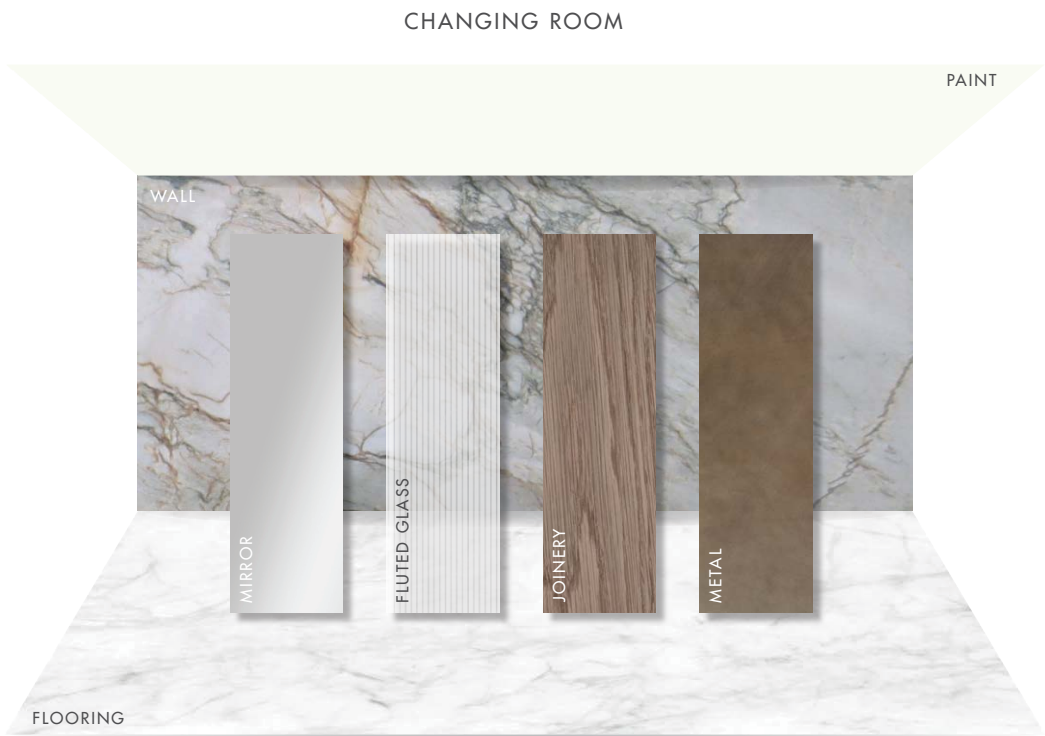




STAY ACTIVE, WITH A VIEW









YOUR PERSONAL LIVING SPACE,  
REFINED LIVING WITH GRACE



KITCHEN ISLANDS  
FOR 1, 2, AND 3BR



SMART HOME  
SYSTEM



BUILT-IN  
APPLIANCES



SOUNDPROOF  
UNITS



A BEDROOM THAT SUITS  
EVERY COMFORT AND STYLE





SEASIDE  
BY PRESTIGE ONE



APARTMENTS



PRESTIGE & EXCLUSIVE APARTMENTS







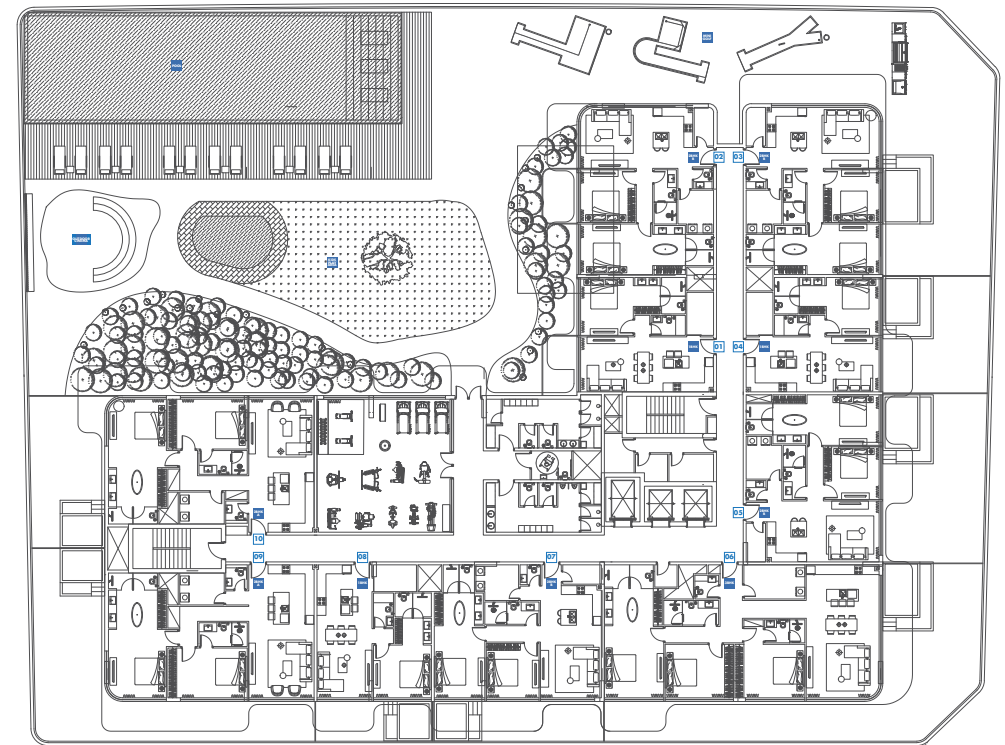
WELCOME HOME TO  
SEASIDE BY PRESTIGE ONE



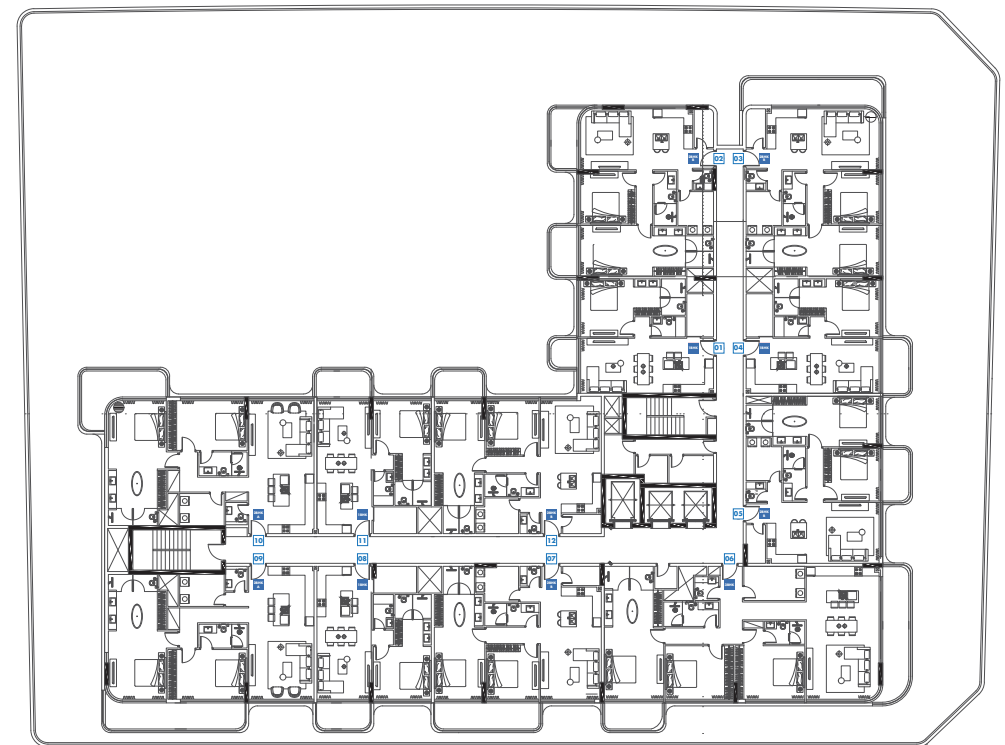


# TYPICAL FLOOR PLANS

FIRST FLOOR | AMENITIES

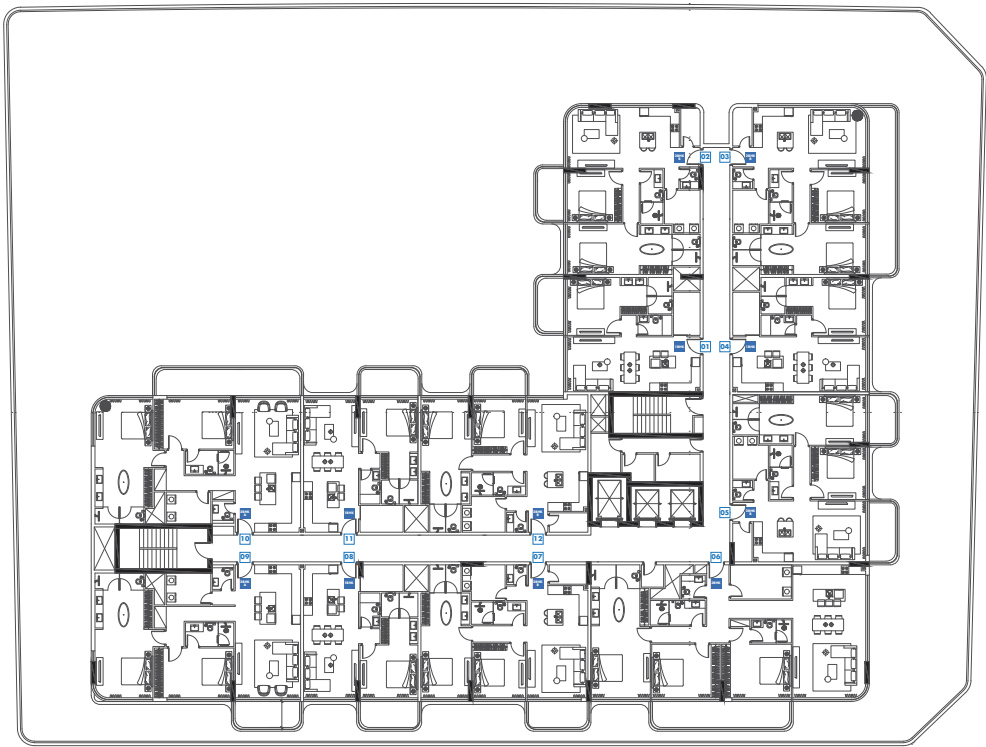


2<sup>nd</sup>, 4<sup>th</sup>, 6<sup>th</sup>, 8<sup>th</sup> & 10<sup>th</sup> FLOORS





3<sup>rd</sup>, 5<sup>th</sup>, 7<sup>th</sup> & 9<sup>th</sup> FLOORS



APARTMENTS

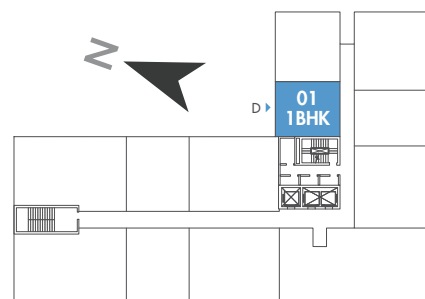
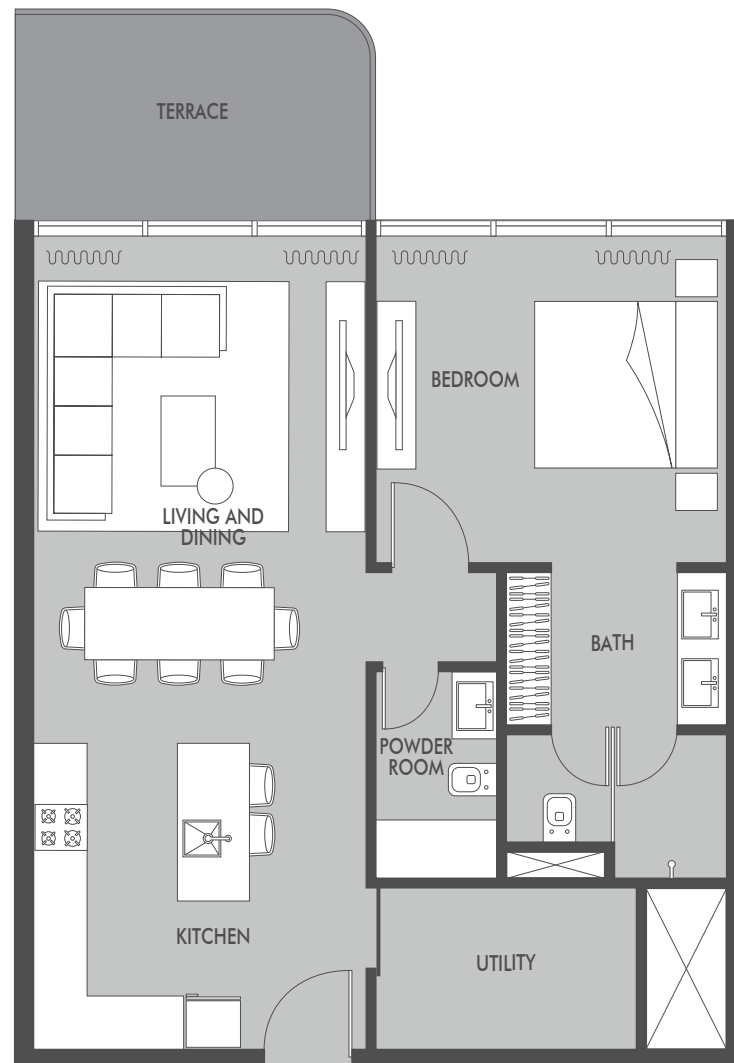


# FIRST FLOOR

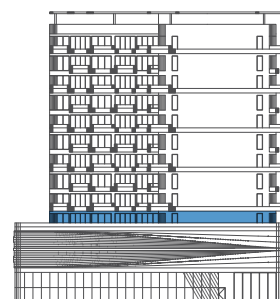


# 1-BEDROOM

SEASIDE  
BY PRESTIGE ONE



FIRST FLOOR



ELEVATION D

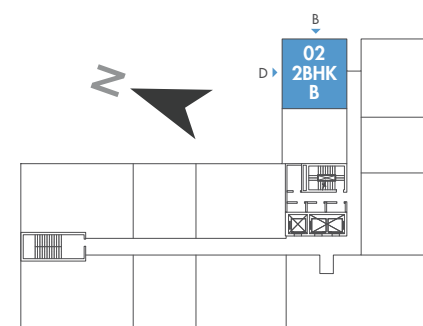
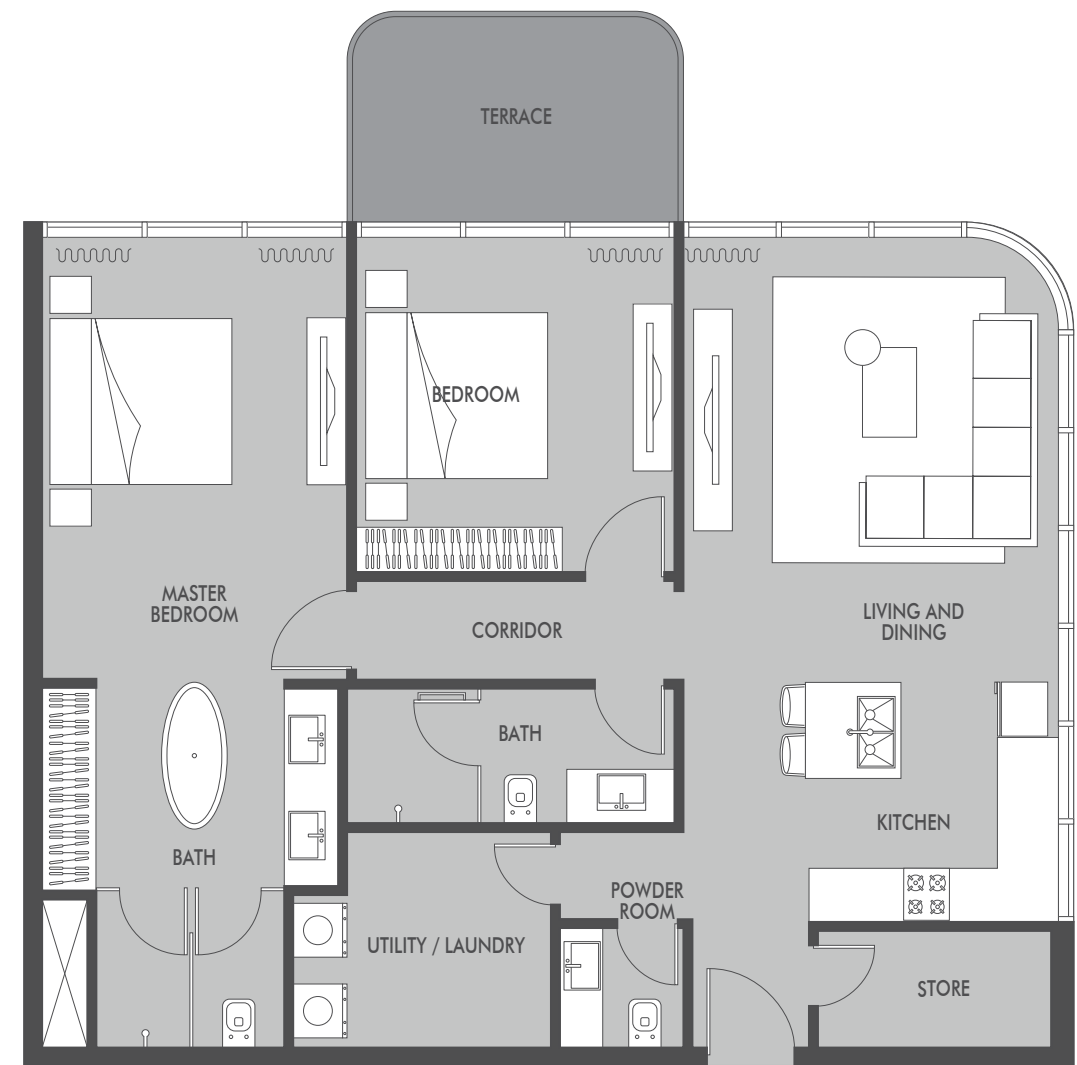
APARTMENT AREA  
775.00 SQ.FT.

TERRACE AREA  
107.60 SQ.FT.

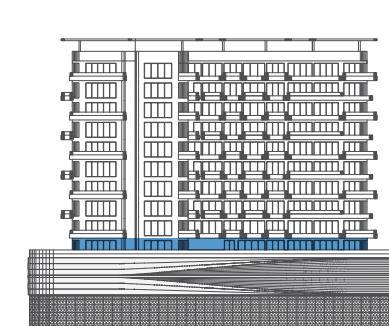
TOTAL AREA  
882.60 SQ.FT.

# 2-BEDROOM TYPE B

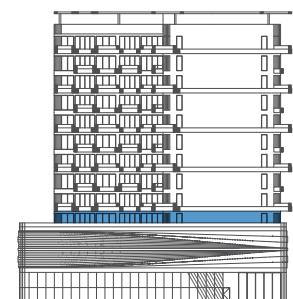
SEASIDE  
BY PRESTIGE ONE



FIRST FLOOR



ELEVATION B



ELEVATION D

APARTMENT AREA  
1162.00 SQ.FT.

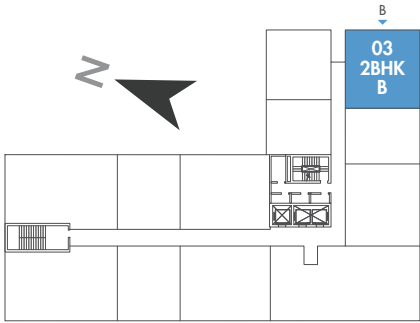
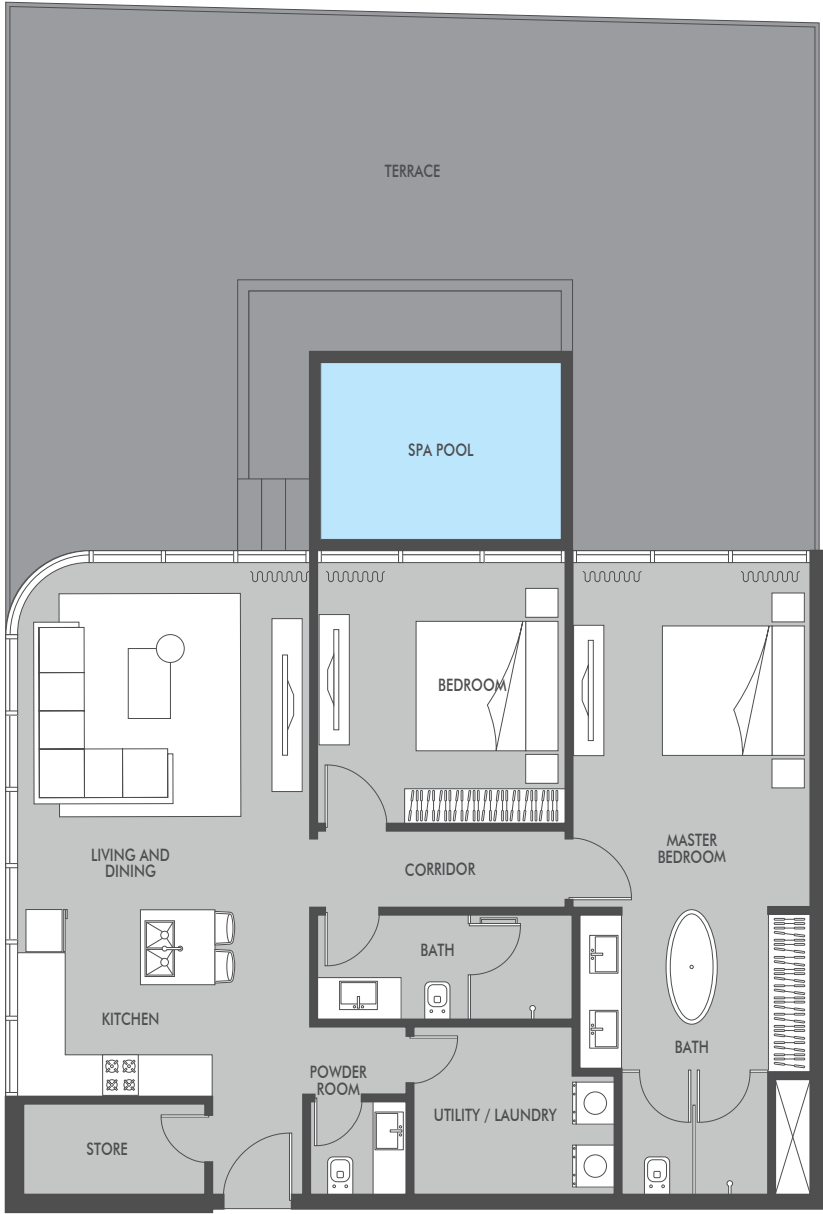
TERRACE AREA  
96.90 SQ.FT.

TOTAL AREA  
1258.90 SQ.FT.

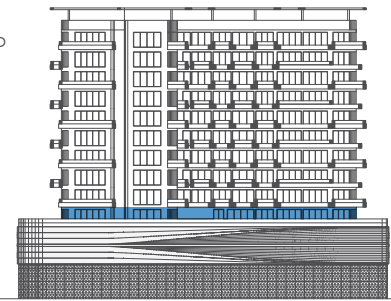


2-BEDROOM  
TYPE B

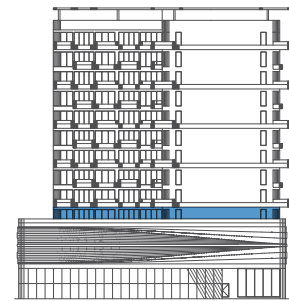
SEASIDE  
BY PRESTIGE ONE



FIRST FLOOR



ELEVATION B

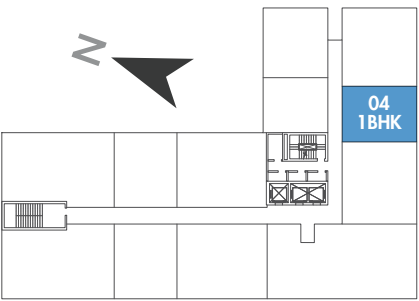
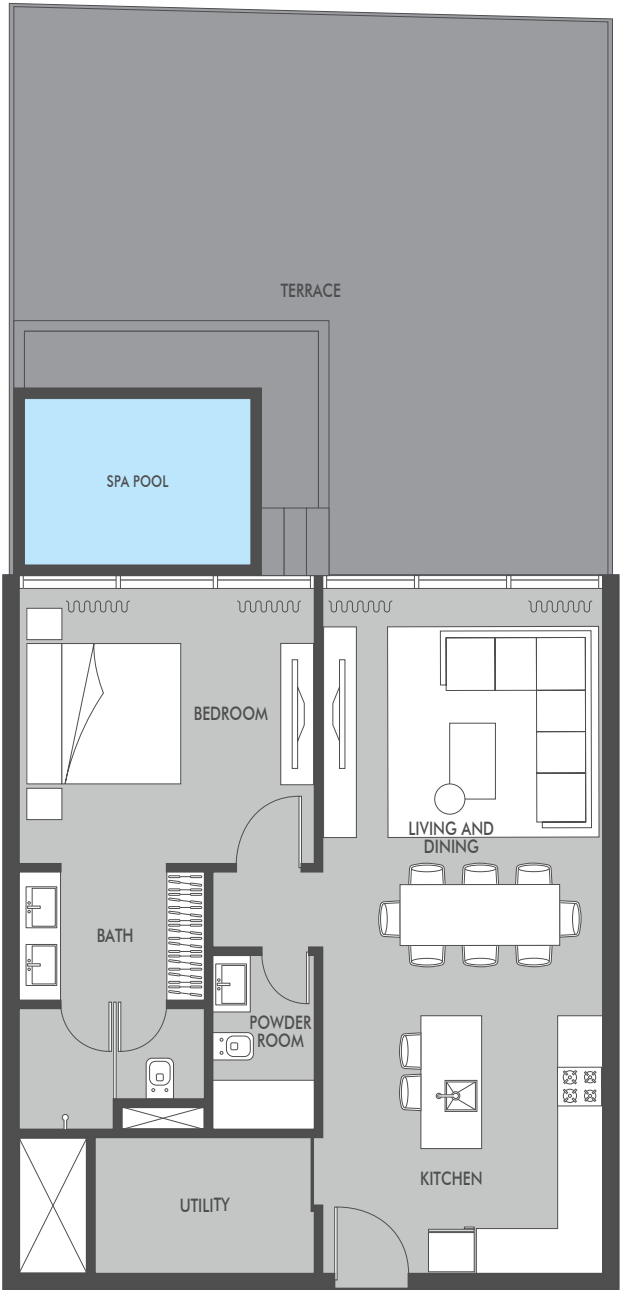


ELEVATION D

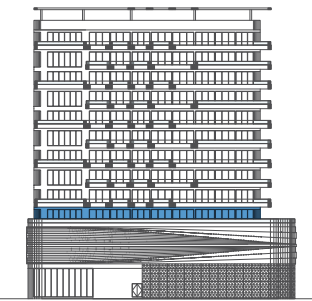
APARTMENT AREA  
1162.00 SQ.FT.  
  
TERRACE AREA  
968.80 SQ.FT.  
  
TOTAL AREA  
2130.80 SQ.FT.

1-BEDROOM

SEASIDE  
BY PRESTIGE ONE



FIRST FLOOR



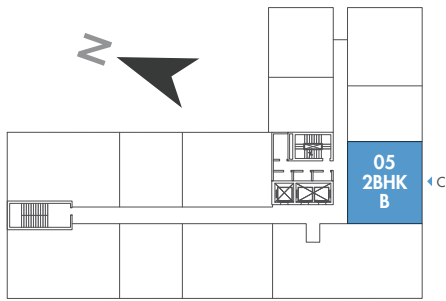
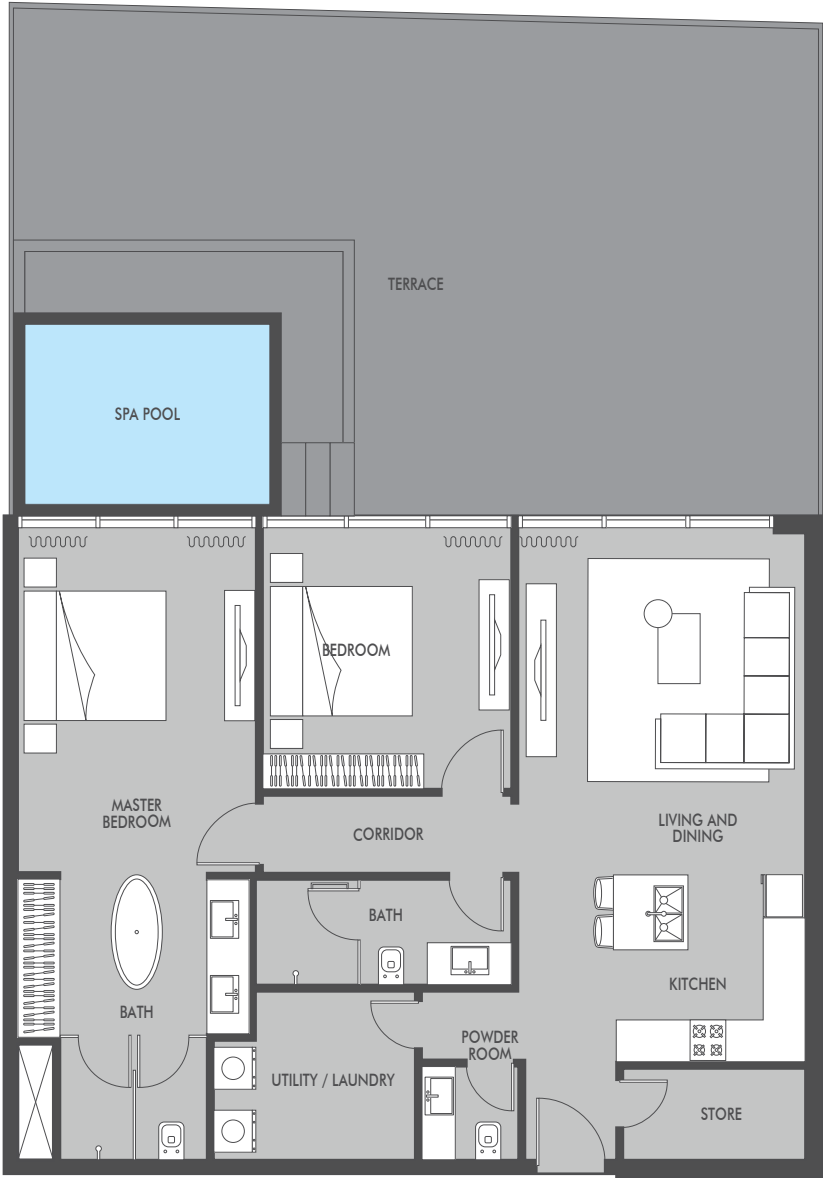
ELEVATION C

APARTMENT AREA  
775.00 SQ.FT.  
  
TERRACE AREA  
635.00 SQ.FT.  
  
TOTAL AREA  
1410.00 SQ.FT.

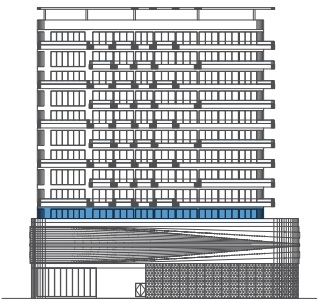


# 2-BEDROOM TYPE B

SEASIDE  
BY PRESTIGE ONE



FIRST FLOOR

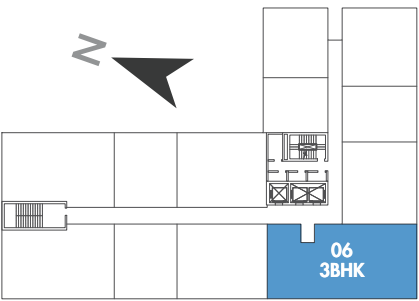
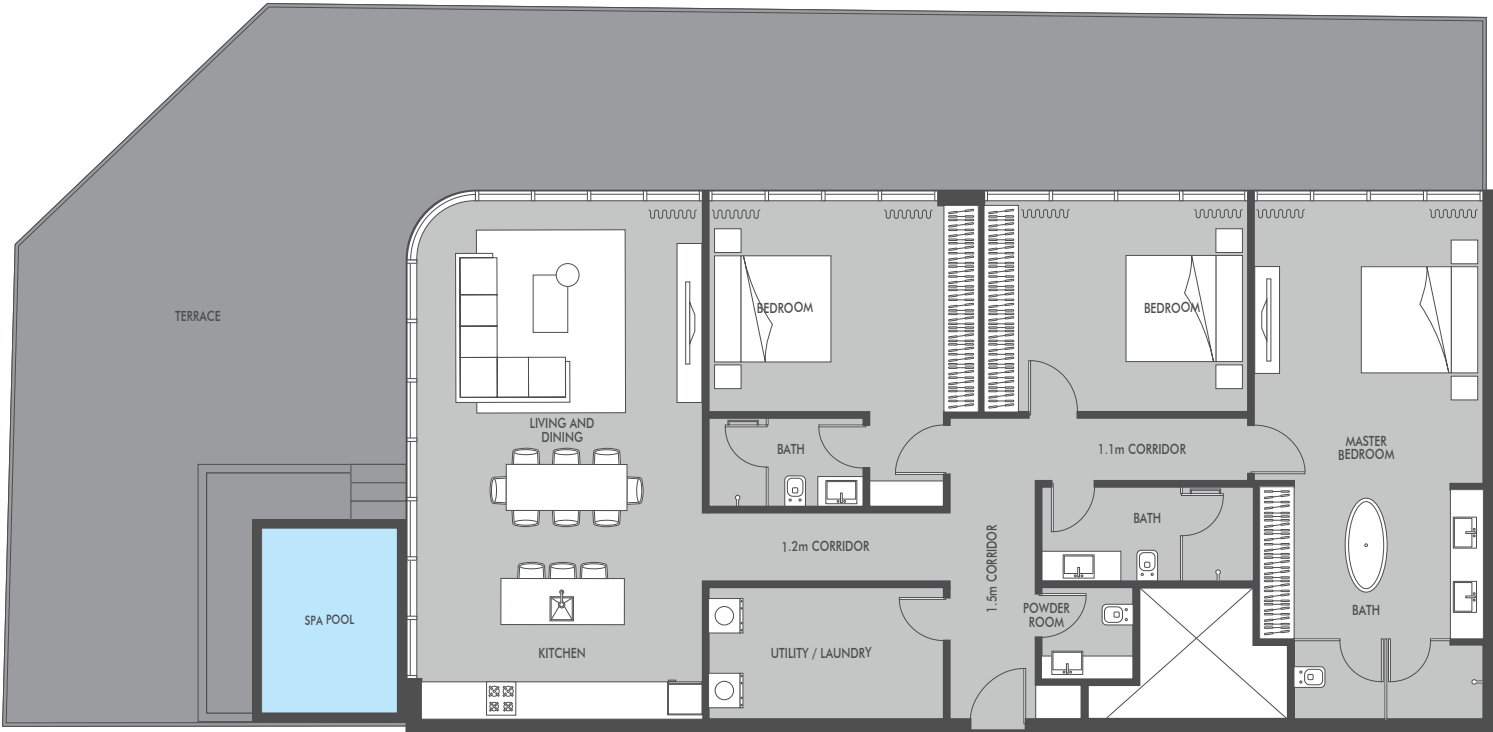


ELEVATION C

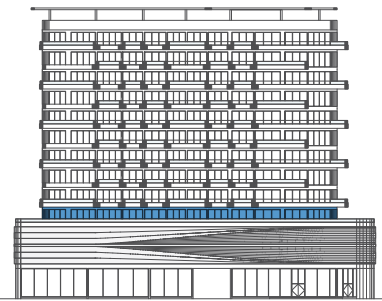
APARTMENT AREA  
1152.00 SQ.FT.  
  
TERRACE AREA  
882.60 SQ.FT.  
  
TOTAL AREA  
2034.60 SQ.FT.

# 3-BEDROOM

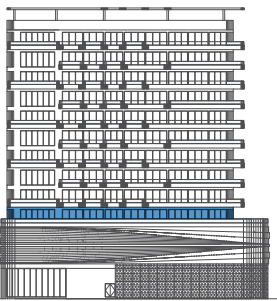
SEASIDE  
BY PRESTIGE ONE



FIRST FLOOR



ELEVATION A



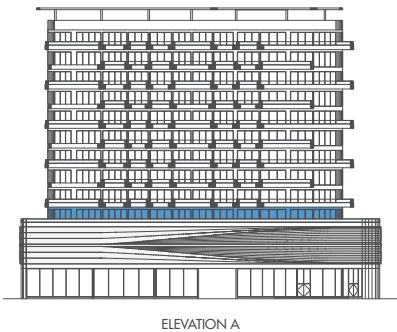
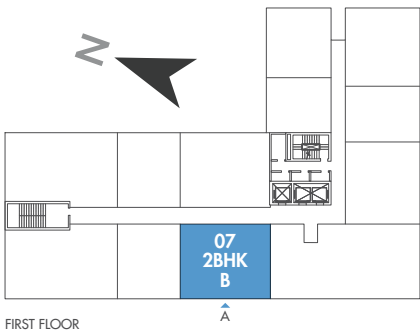
ELEVATION C

APARTMENT AREA  
1829.80 SQ.FT.  
  
TERRACE AREA  
1474.70 SQ.FT.  
  
TOTAL AREA  
3304.50 SQ.FT.



2-BEDROOM  
TYPE B

SEASIDE  
BY PRESTIGE ONE



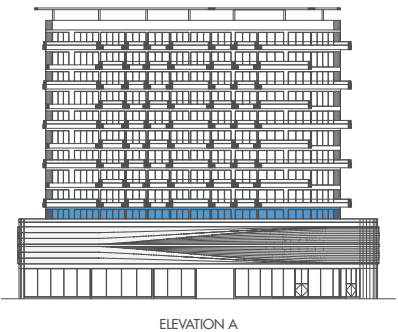
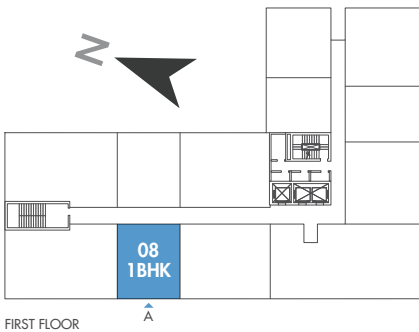
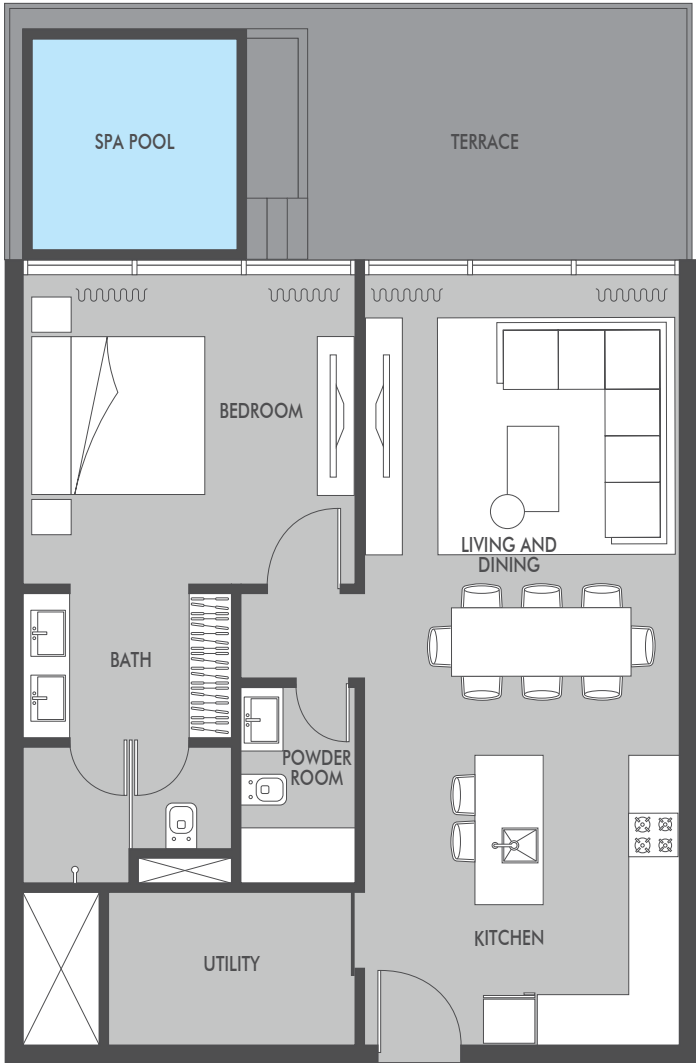
APARTMENT AREA  
1152.00 SQ.FT.

TERRACE AREA  
376.70 SQ.FT.

TOTAL AREA  
1528.70 SQ.FT.

1-BEDROOM

SEASIDE  
BY PRESTIGE ONE



APARTMENT AREA  
775.00 SQ.FT.

TERRACE AREA  
258.30 SQ.FT.

TOTAL AREA  
1033.30 SQ.FT.



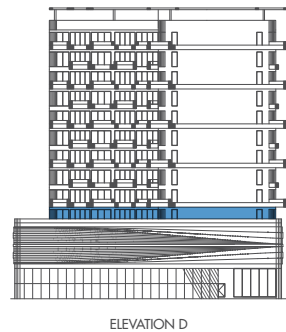
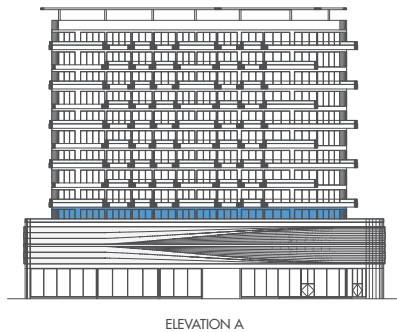
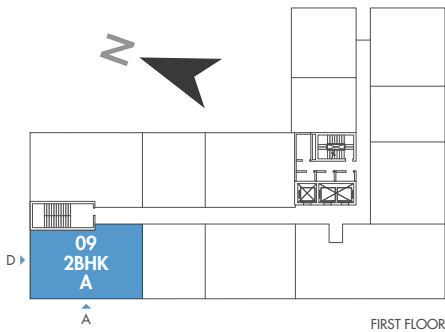
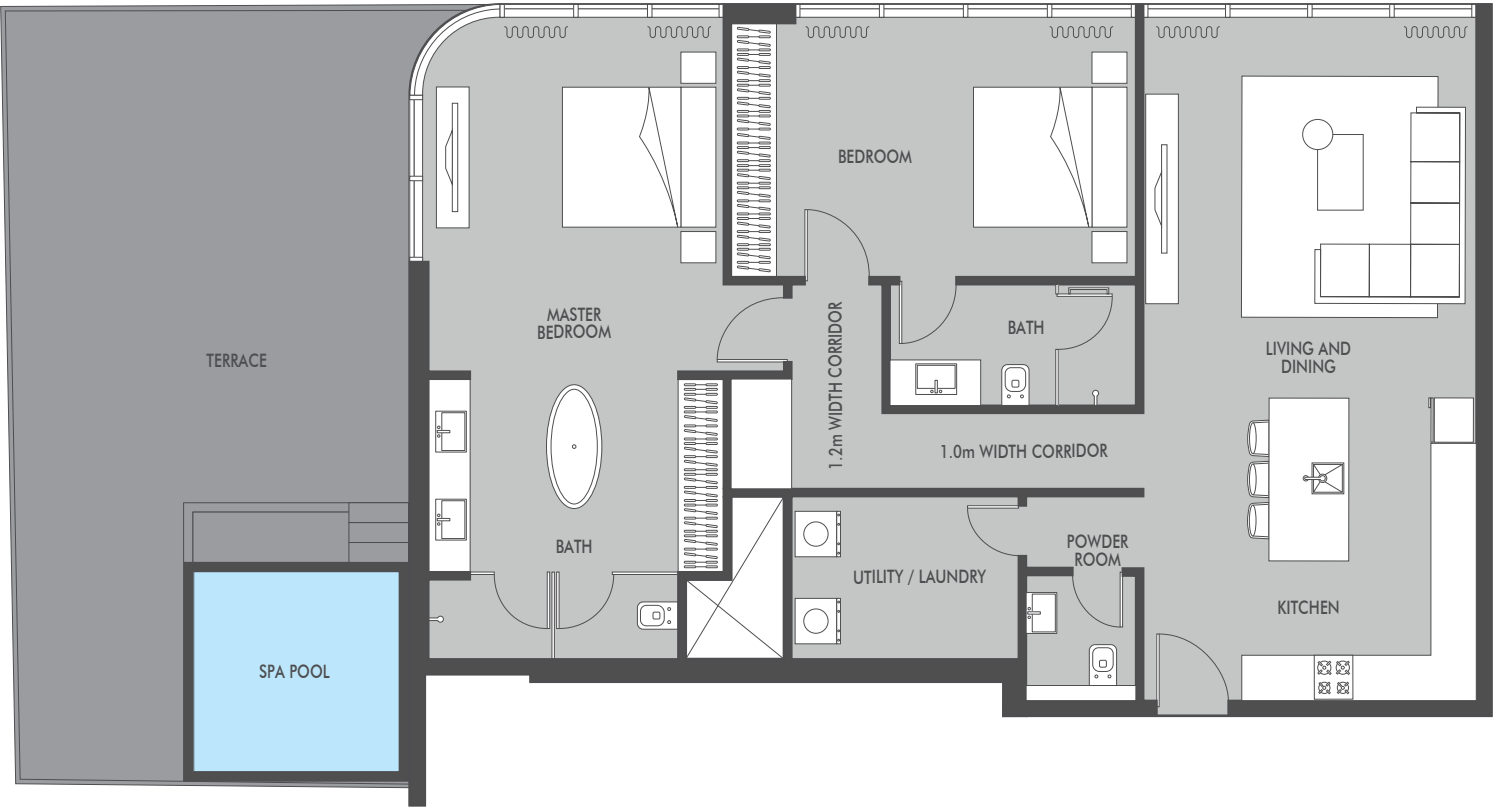
2-BEDROOM  
TYPE A

SEASIDE  
BY PRESTIGE ONE

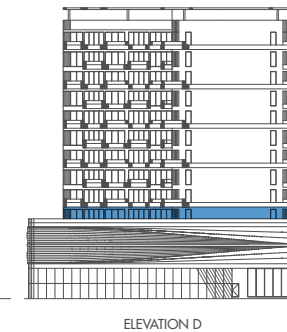
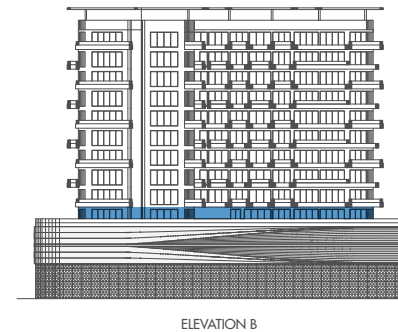
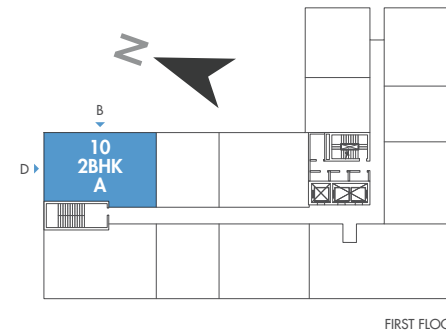


2-BEDROOM  
TYPE A

SEASIDE  
BY PRESTIGE ONE



APARTMENT AREA  
1356.00 SQ.FT.  
TERRACE AREA  
1216.30 SQ.FT.  
TOTAL AREA  
2572.30 SQ.FT.



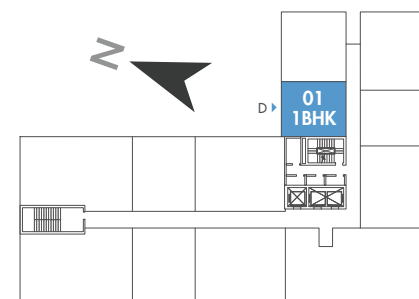
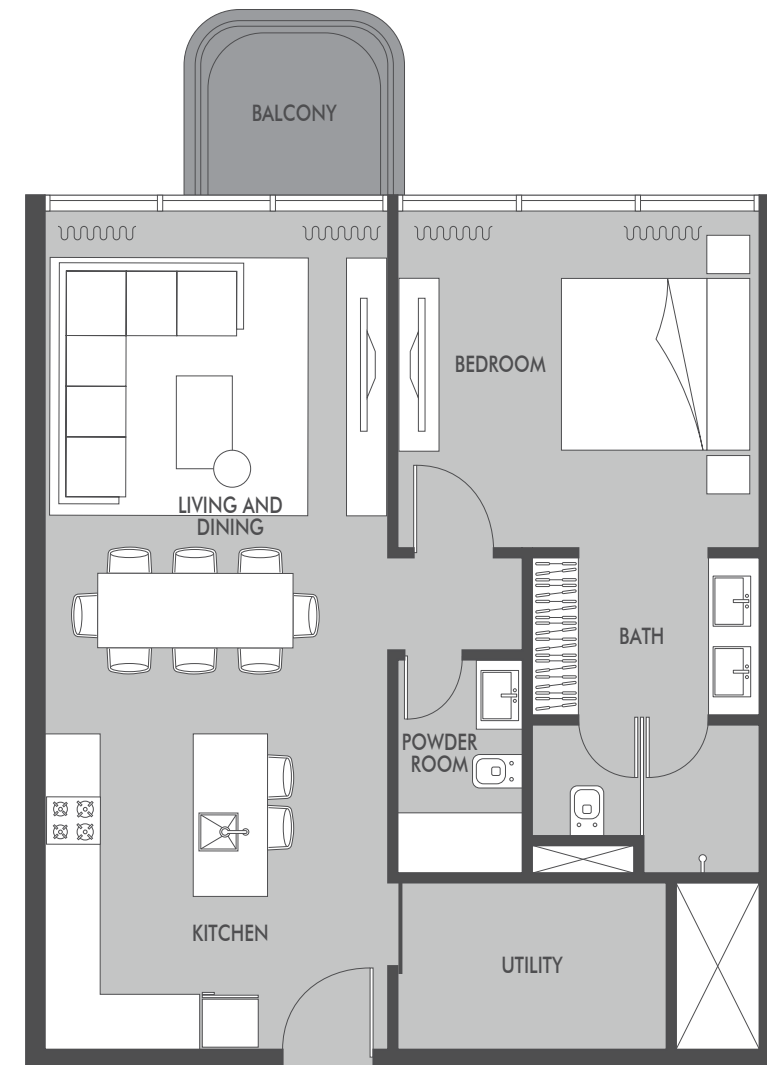
APARTMENT AREA  
1346.00 SQ.FT.  
TERRACE AREA  
592.00 SQ.FT.  
TOTAL AREA  
1938.00 SQ.FT.



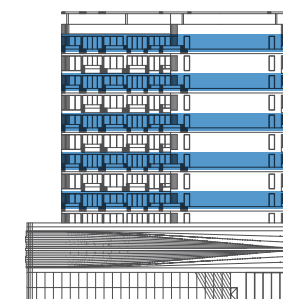
2<sup>nd</sup> | 4<sup>th</sup> | 6<sup>th</sup> | 8<sup>th</sup> | 10<sup>th</sup>  
FLOORS

# 1-BEDROOM

SEASIDE  
BY PRESTIGE ONE



2<sup>nd</sup>, 4<sup>th</sup>, 6<sup>th</sup>, 8<sup>th</sup> & 10<sup>th</sup> FLOORS



ELEVATION D

APARTMENT AREA  
775.00 SQ.FT.

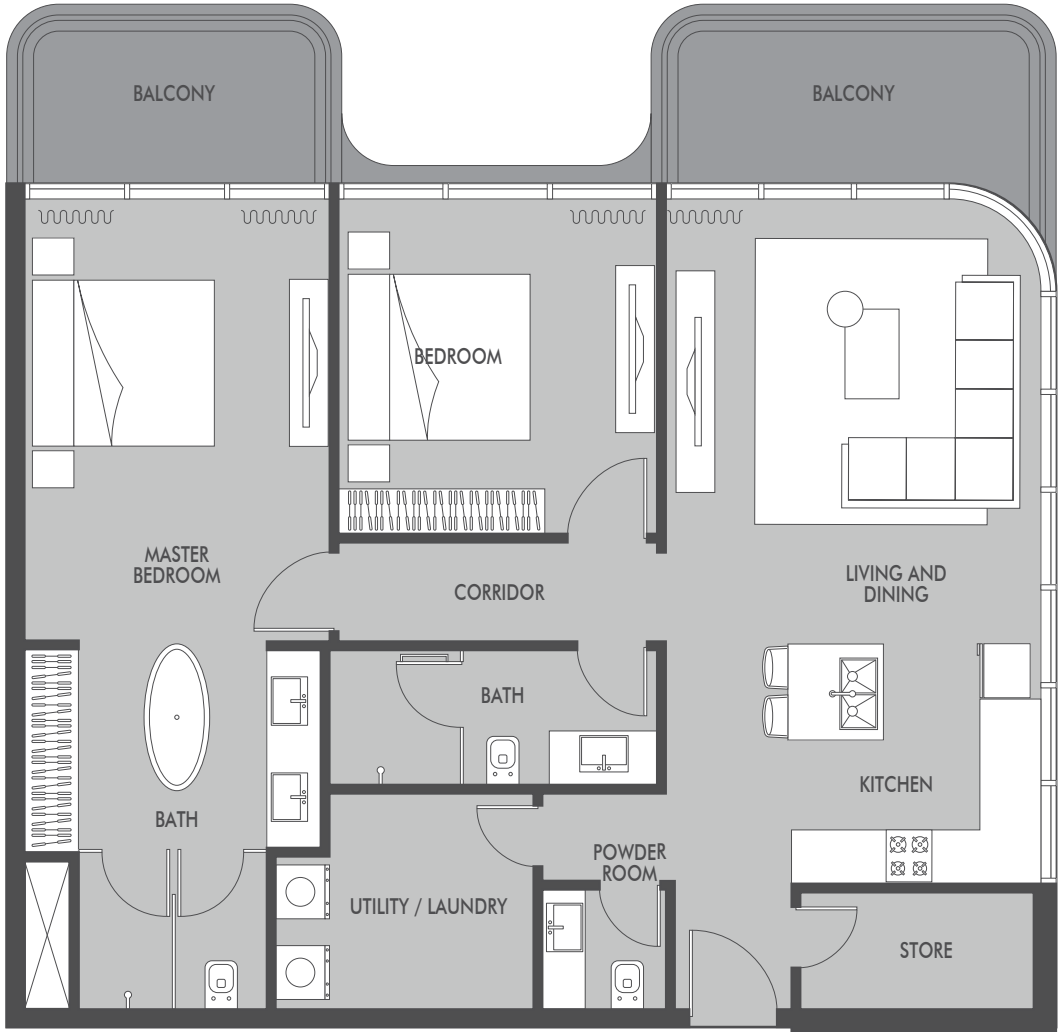
TERRACE AREA  
53.80 SQ.FT.

TOTAL AREA  
828.80 SQ.FT.



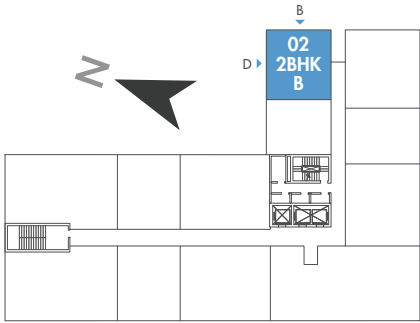
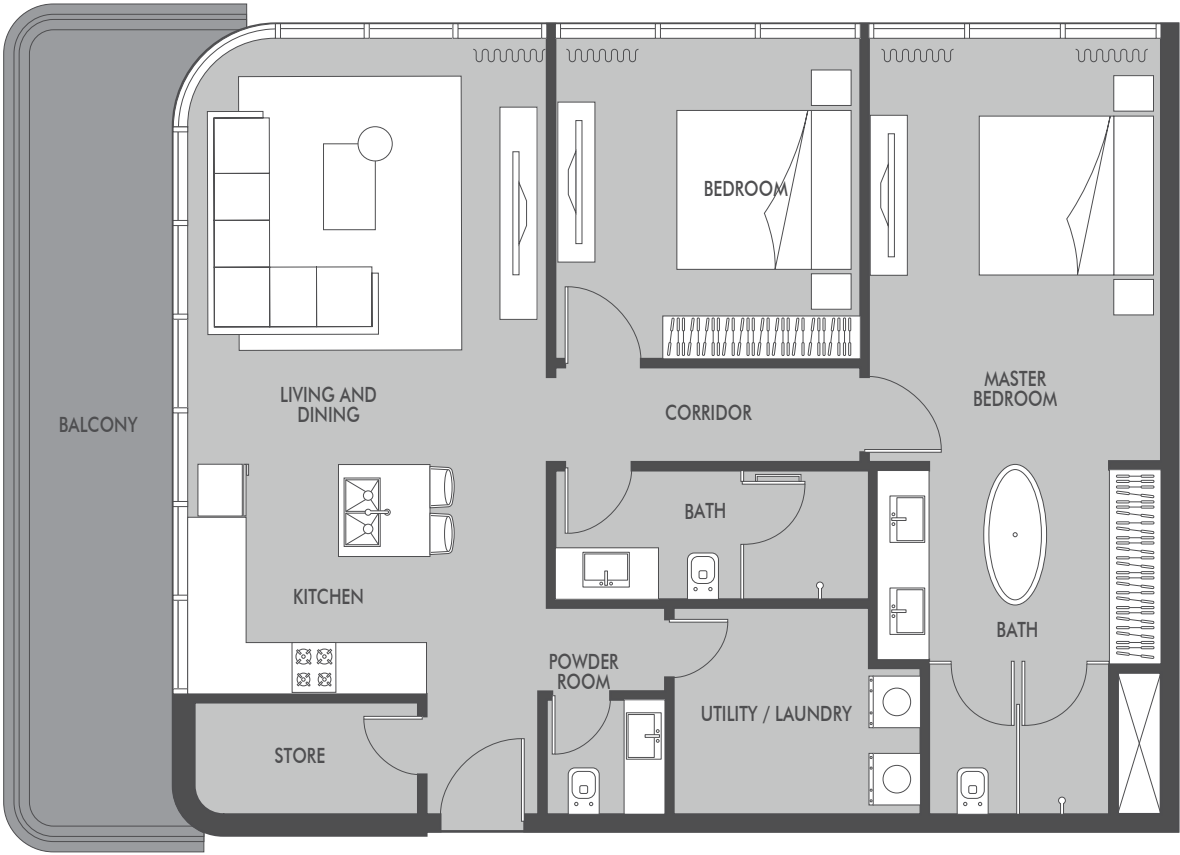
2-BEDROOM  
TYPE B

SEASIDE  
BY PRESTIGE ONE

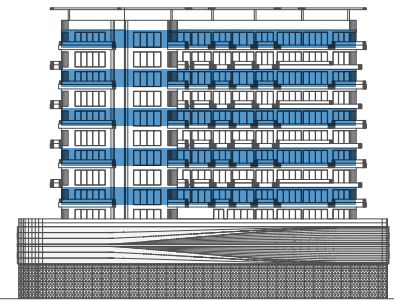


2-BEDROOM  
TYPE B

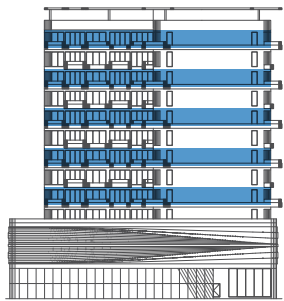
SEASIDE  
BY PRESTIGE ONE



2<sup>nd</sup>, 4<sup>th</sup>, 6<sup>th</sup>, 8<sup>th</sup> & 10<sup>th</sup> FLOORS

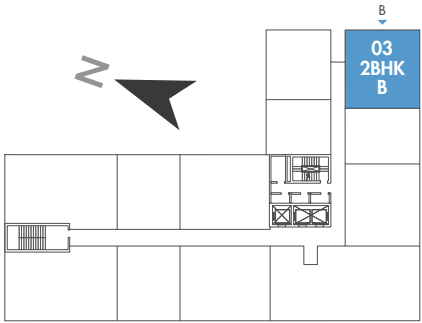


ELEVATION B

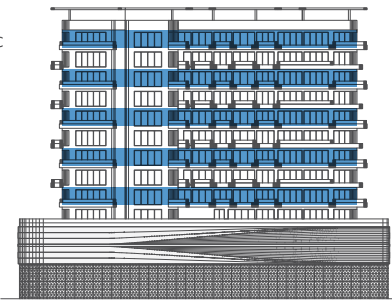


ELEVATION D

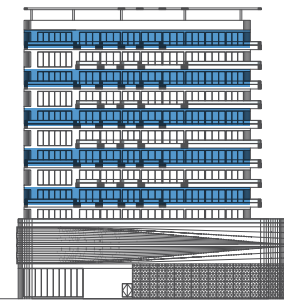
APARTMENT AREA  
1162.00 SQ.FT.  
  
TERRACE AREA  
182.90 SQ.FT.  
  
TOTAL AREA  
1344.90 SQ.FT.



2<sup>nd</sup>, 4<sup>th</sup>, 6<sup>th</sup>, 8<sup>th</sup> & 10<sup>th</sup> FLOORS



ELEVATION B



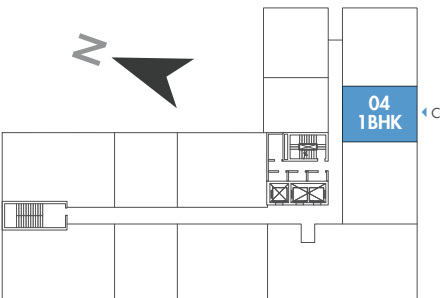
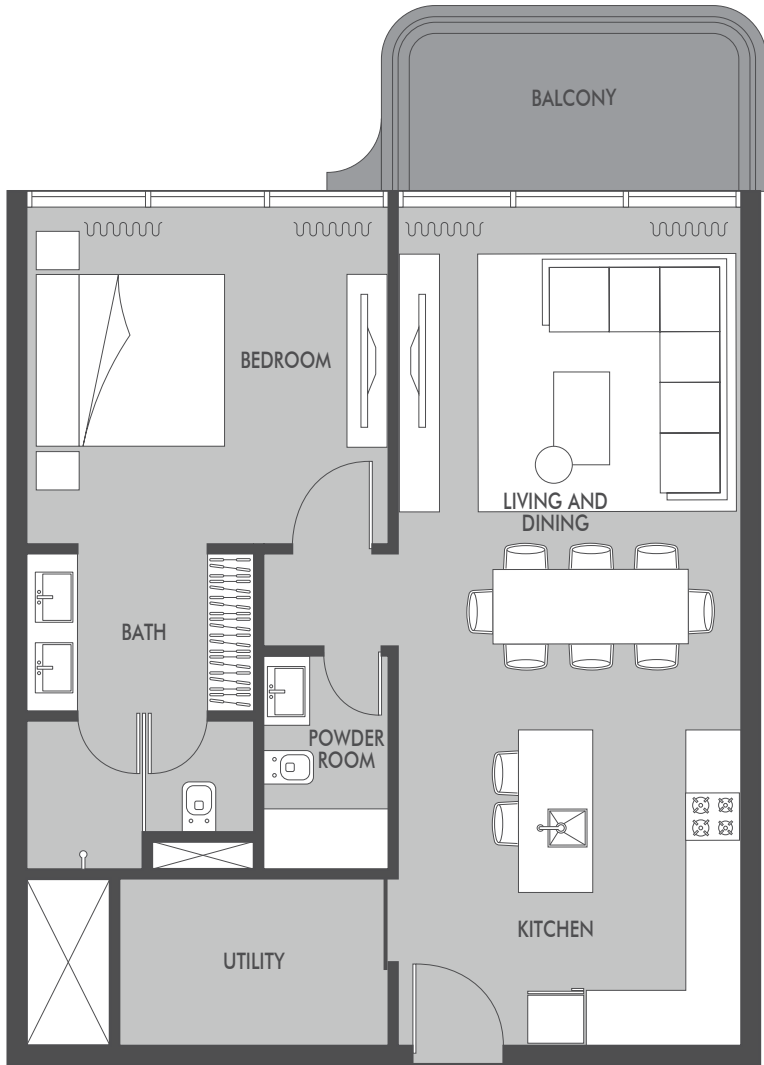
ELEVATION C

APARTMENT AREA  
1162.00 SQ.FT.  
  
TERRACE AREA  
215.30 SQ.FT.  
  
TOTAL AREA  
1377.30 SQ.FT.

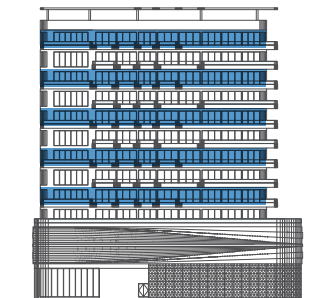


1-BEDROOM

SEASIDE  
BY PRESTIGE ONE



2<sup>nd</sup>, 4<sup>th</sup>, 6<sup>th</sup>, 8<sup>th</sup> & 10<sup>th</sup> FLOORS



ELEVATION C

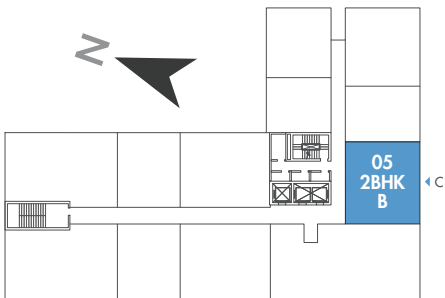
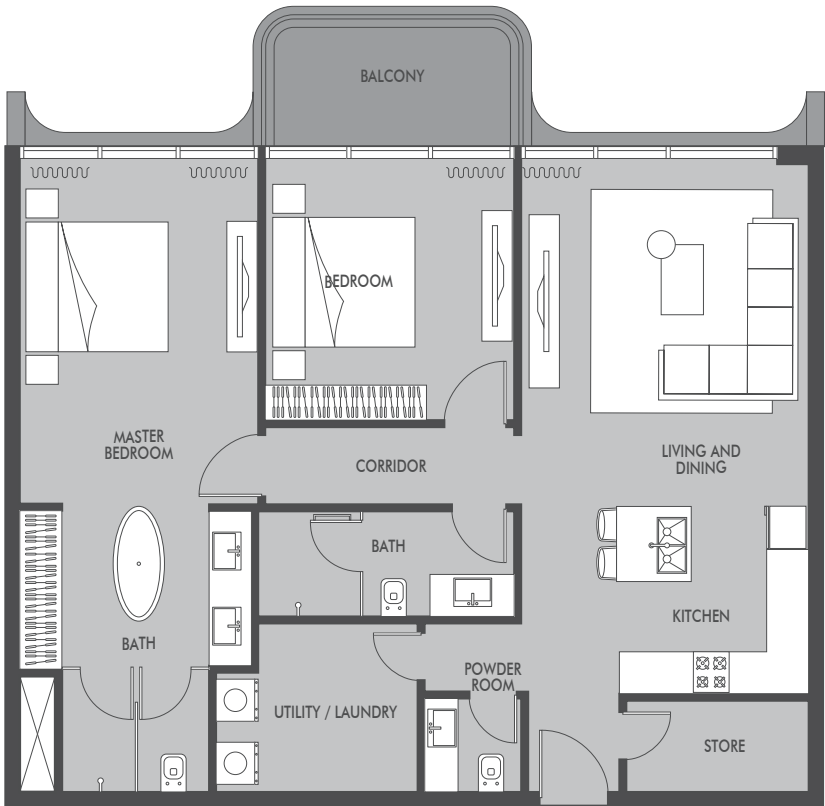
APARTMENT AREA  
775.00 SQ.FT.

TERRACE AREA  
86.10 SQ.FT.

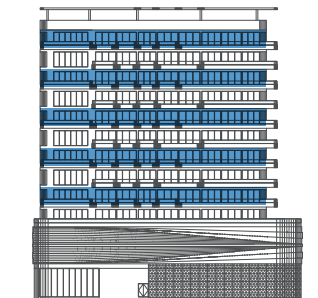
TOTAL AREA  
861.10 SQ.FT.

2-BEDROOM  
TYPE B

SEASIDE  
BY PRESTIGE ONE



2<sup>nd</sup>, 4<sup>th</sup>, 6<sup>th</sup>, 8<sup>th</sup> & 10<sup>th</sup> FLOORS



ELEVATION C

APARTMENT AREA  
1152.00 SQ.FT.

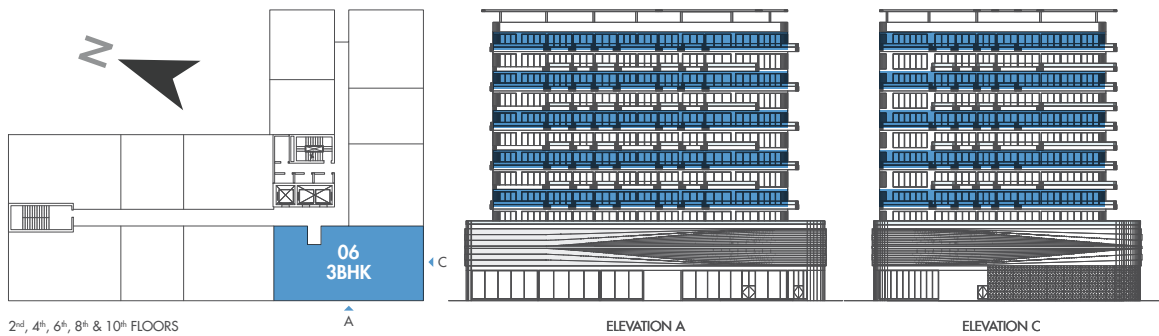
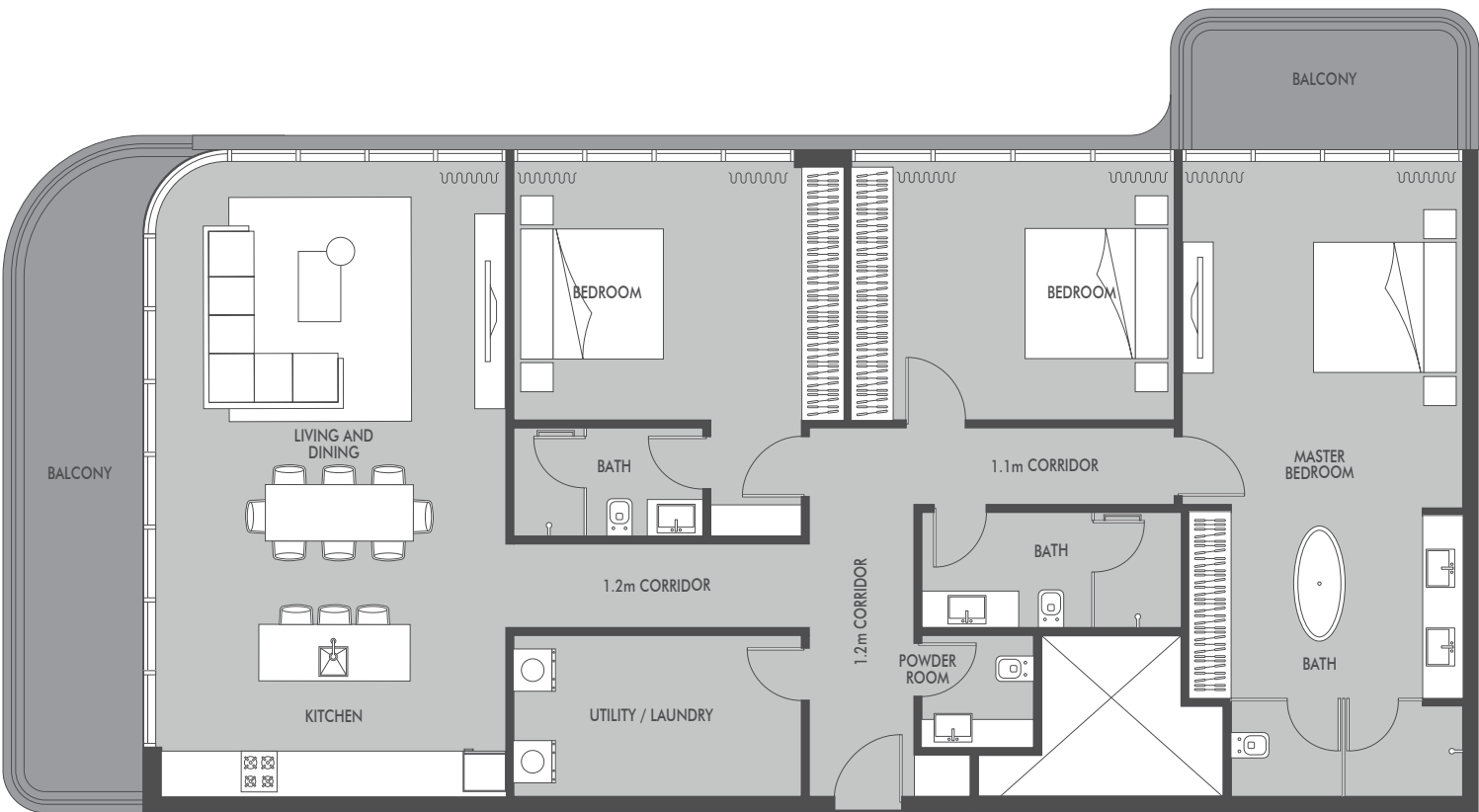
TERRACE AREA  
86.10 SQ.FT.

TOTAL AREA  
1238.10 SQ.FT.



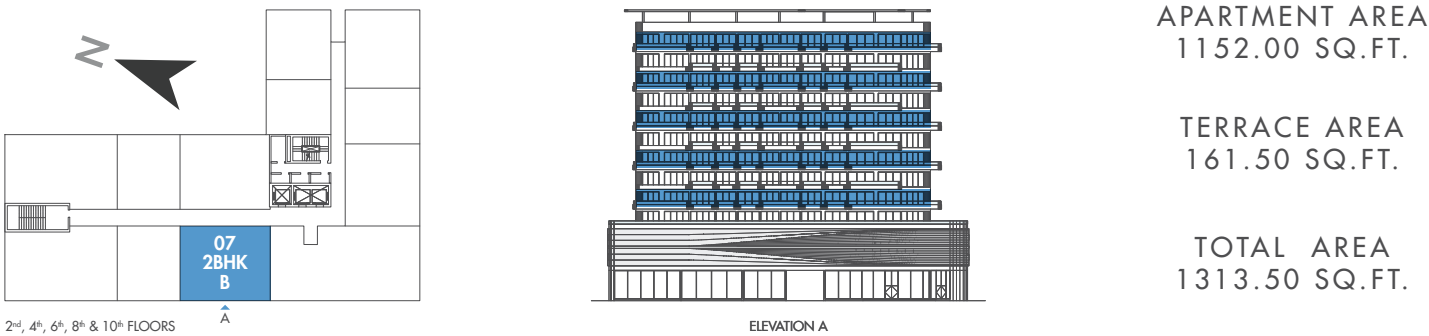
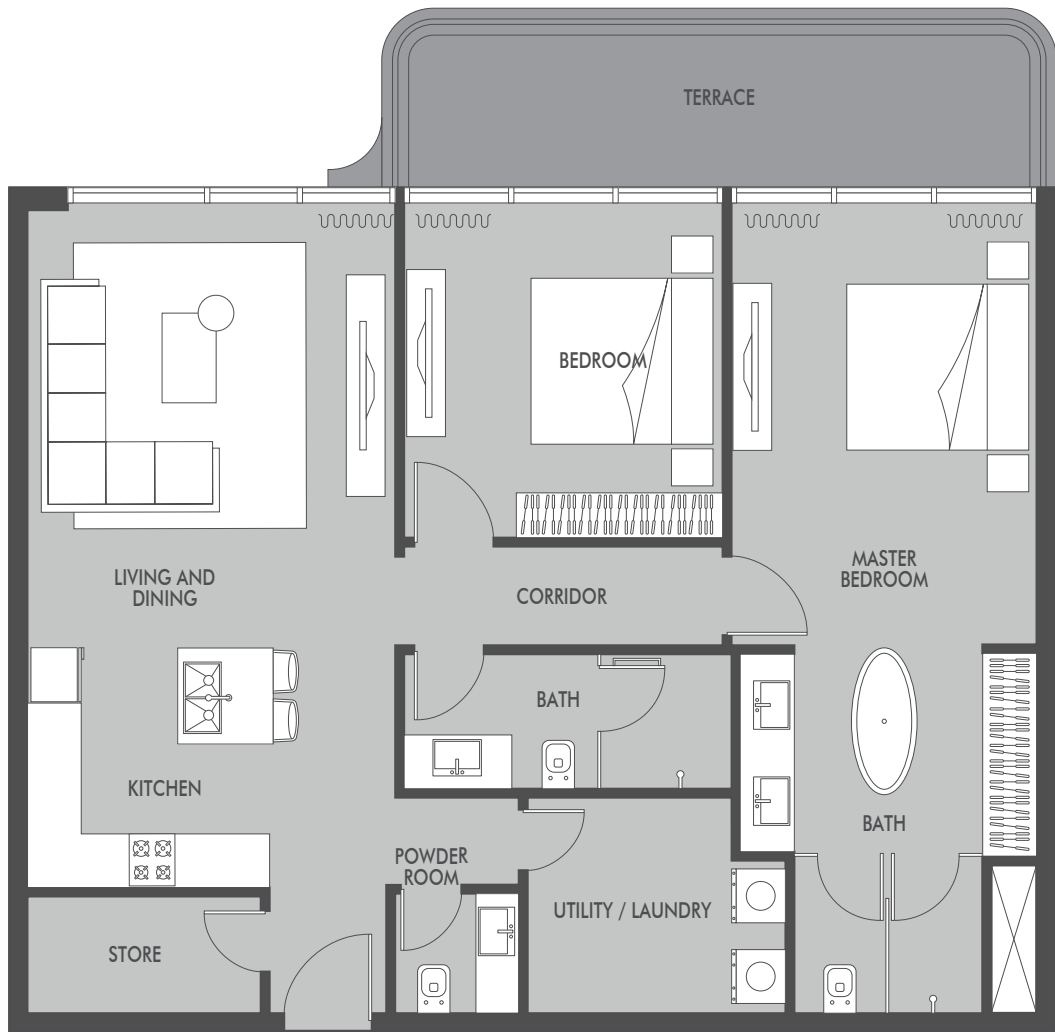
# 3-BEDROOM

SEASIDE  
BY PRESTIGE ONE



# 2-BEDROOM TYPE B

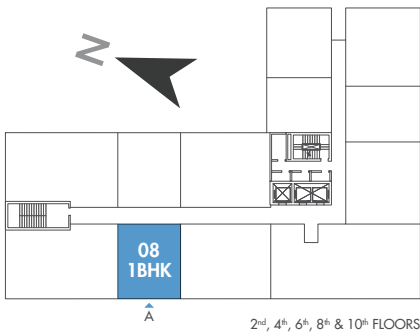
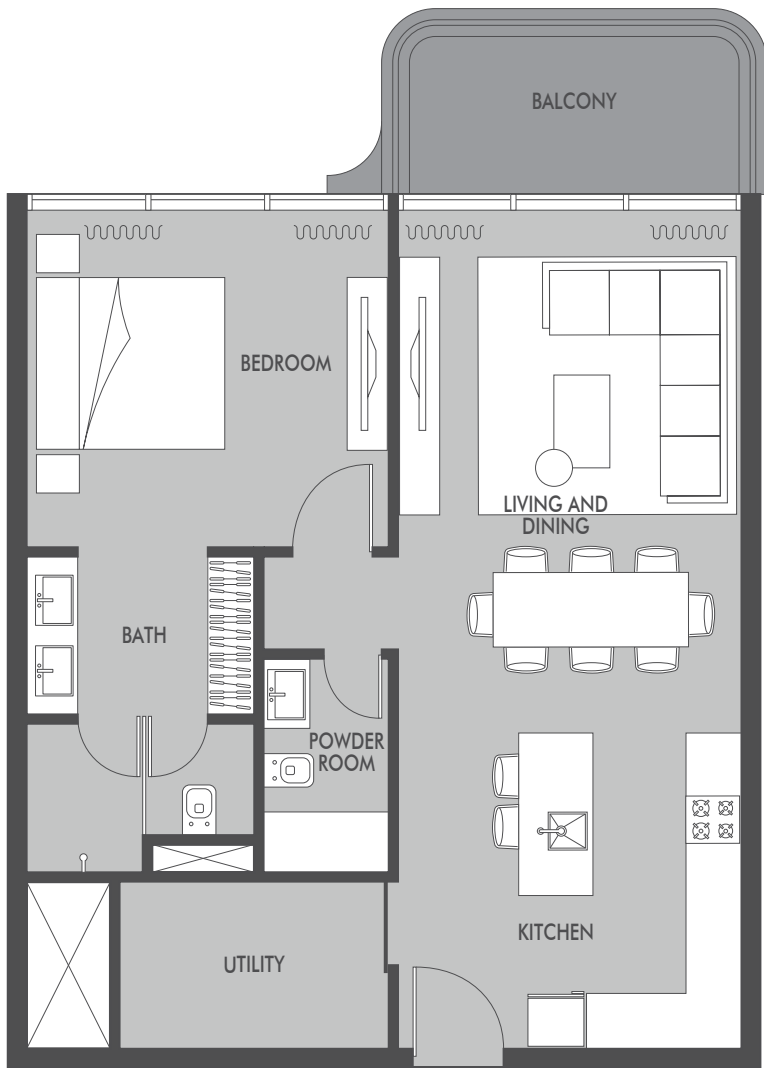
SEASIDE  
BY PRESTIGE ONE



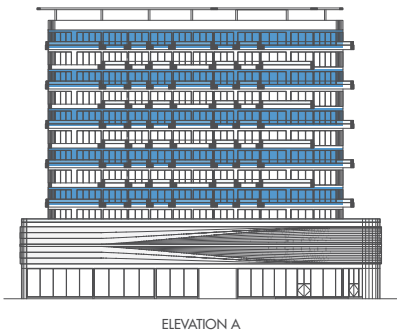


1-BEDROOM

SEASIDE  
BY PRESTIGE ONE



2<sup>nd</sup>, 4<sup>th</sup>, 6<sup>th</sup>, 8<sup>th</sup> & 10<sup>th</sup> FLOORS

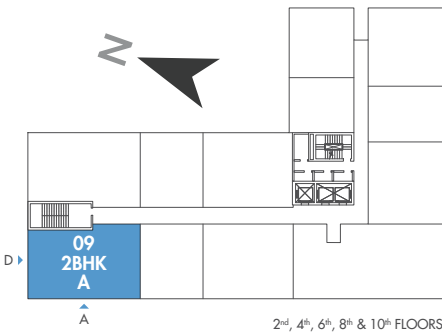
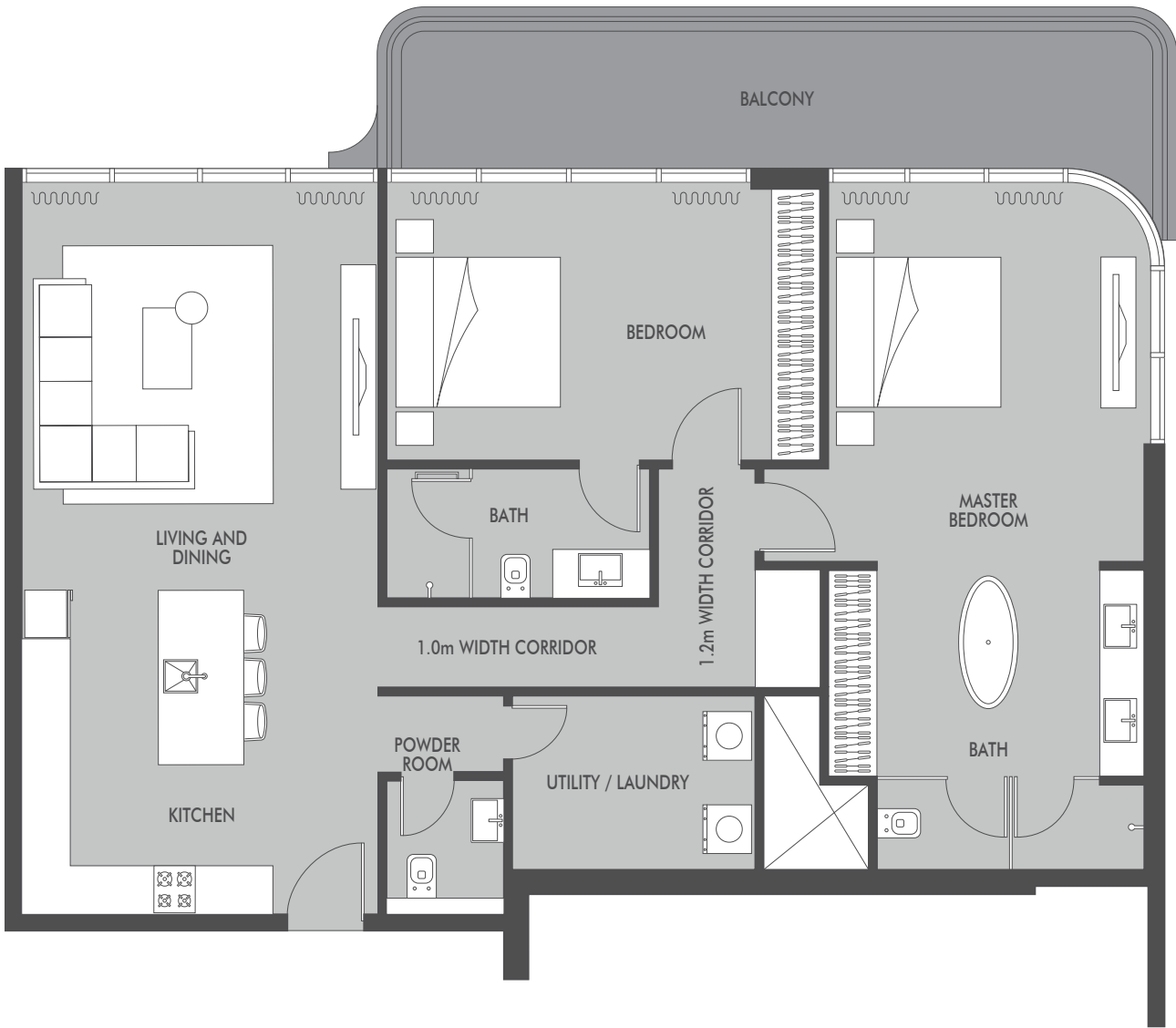


ELEVATION A

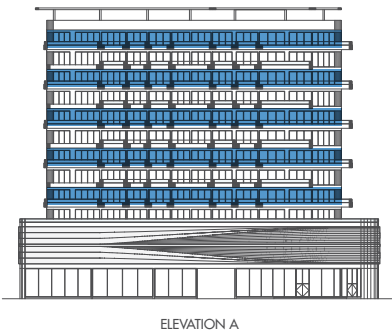
APARTMENT AREA  
775.00 SQ.FT.  
  
TERRACE AREA  
86.10 SQ.FT.  
  
TOTAL AREA  
861.10 SQ.FT.

2-BEDROOM  
TYPE A

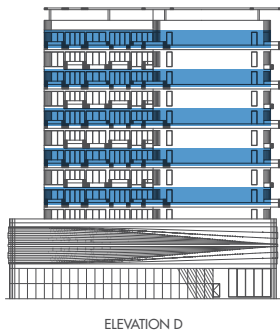
SEASIDE  
BY PRESTIGE ONE



2<sup>nd</sup>, 4<sup>th</sup>, 6<sup>th</sup>, 8<sup>th</sup> & 10<sup>th</sup> FLOORS



ELEVATION A



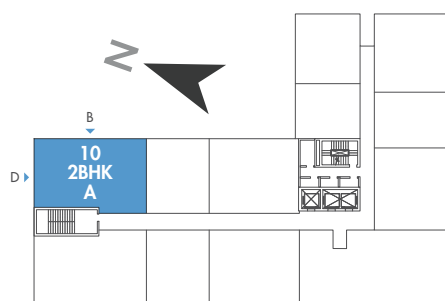
ELEVATION D

APARTMENT AREA  
1356.00 SQ.FT.  
  
TERRACE AREA  
215.30 SQ.FT.  
  
TOTAL AREA  
1571.30 SQ.FT.

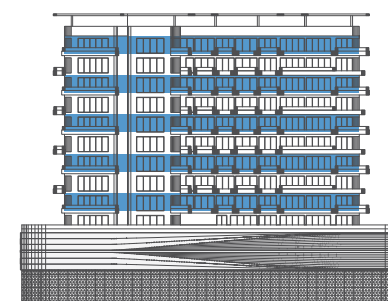


# 2-BEDROOM TYPE A

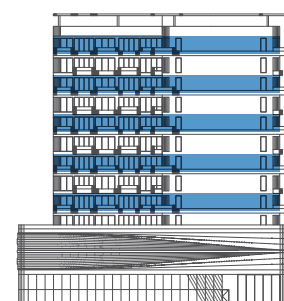
SEASIDE  
BY PRESTIGE ONE



2<sup>nd</sup>, 4<sup>th</sup>, 6<sup>th</sup>, 8<sup>th</sup> & 10<sup>th</sup> FLOORS



ELEVATION B



ELEVATION D

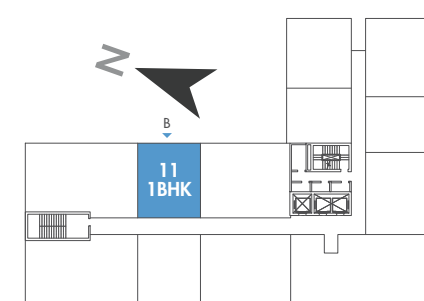
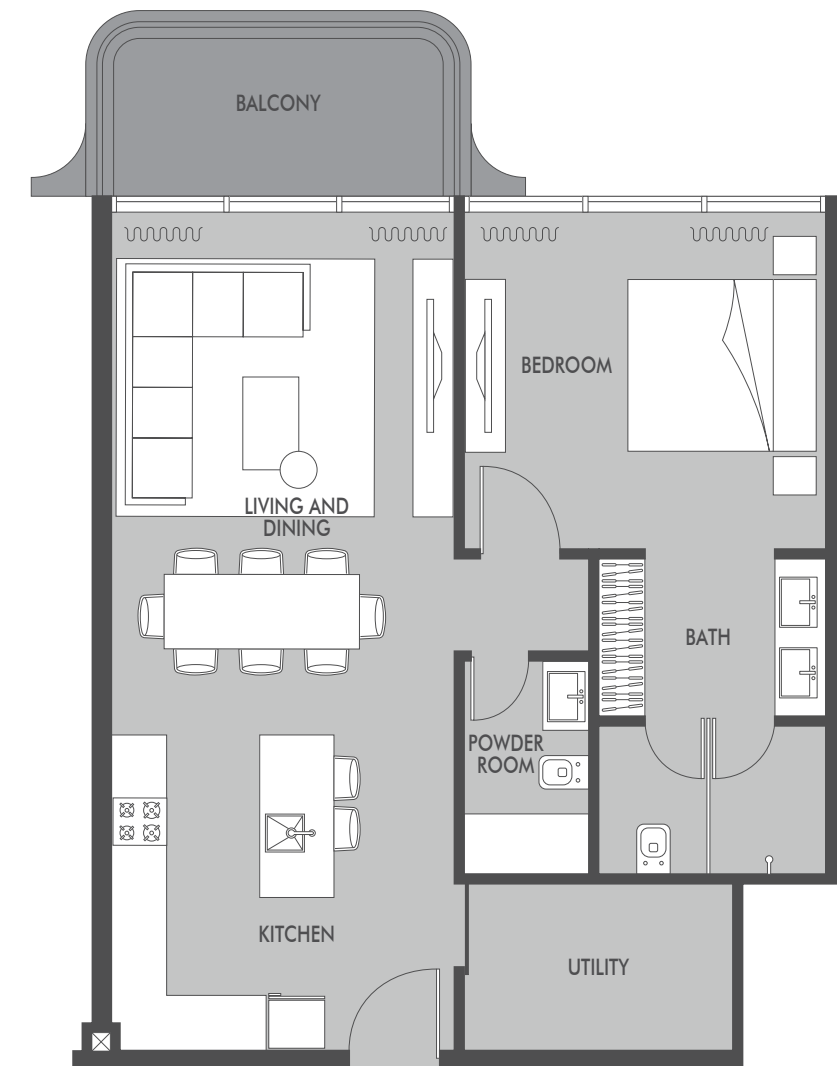
APARTMENT AREA  
1346.00 SQ.FT.

TERRACE AREA  
182.90 SQ.FT.

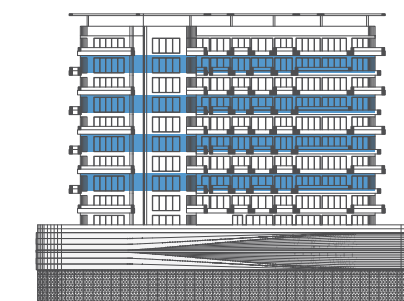
TOTAL AREA  
1528.90 SQ.FT.

# 1-BEDROOM

SEASIDE  
BY PRESTIGE ONE



3<sup>rd</sup>, 5<sup>th</sup>, 7<sup>th</sup> & 9<sup>th</sup> FLOORS



ELEVATION B

APARTMENT AREA  
775.00 SQ.FT.

TERRACE AREA  
86.10 SQ.FT.

TOTAL AREA  
861.10 SQ.FT.

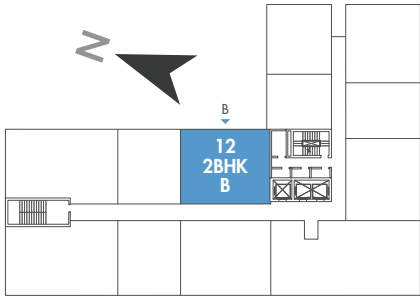


2-BEDROOM  
TYPE B

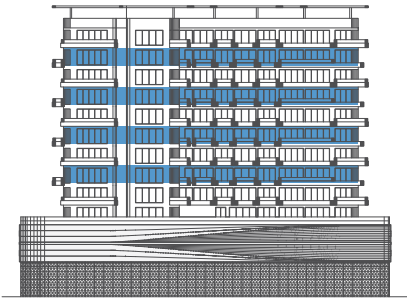
SEASIDE  
BY PRESTIGE ONE



3<sup>rd</sup> | 5<sup>th</sup> | 7<sup>th</sup> | 9<sup>th</sup>  
FLOORS



3<sup>rd</sup>, 5<sup>th</sup>, 7<sup>th</sup> & 9<sup>th</sup> FLOORS



ELEVATION B

APARTMENT AREA  
1152.00 SQ.FT.

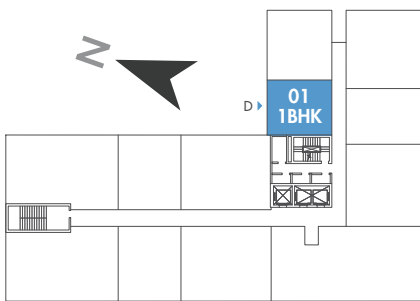
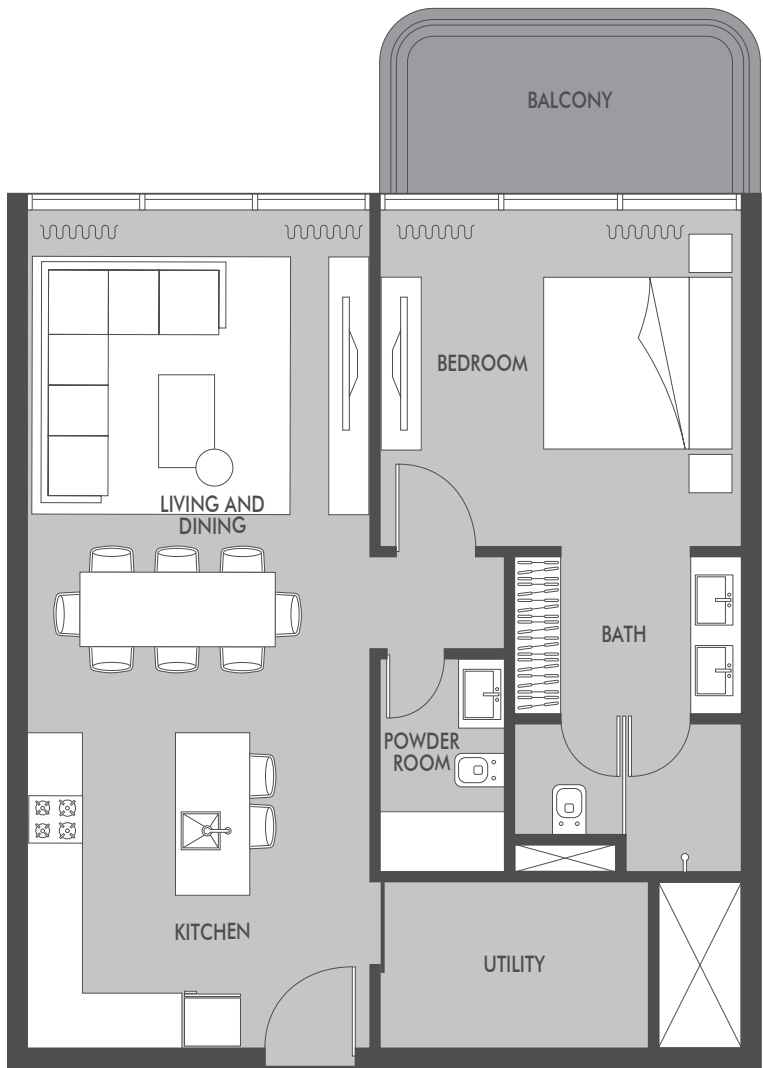
TERRACE AREA  
75.30 SQ.FT.

TOTAL AREA  
1227.30 SQ.FT.



1-BEDROOM

SEASIDE  
BY PRESTIGE ONE



3<sup>rd</sup>, 5<sup>th</sup>, 7<sup>th</sup> & 9<sup>th</sup> FLOORS

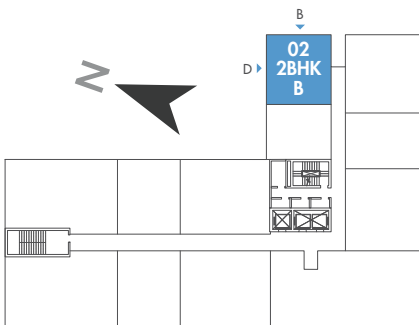
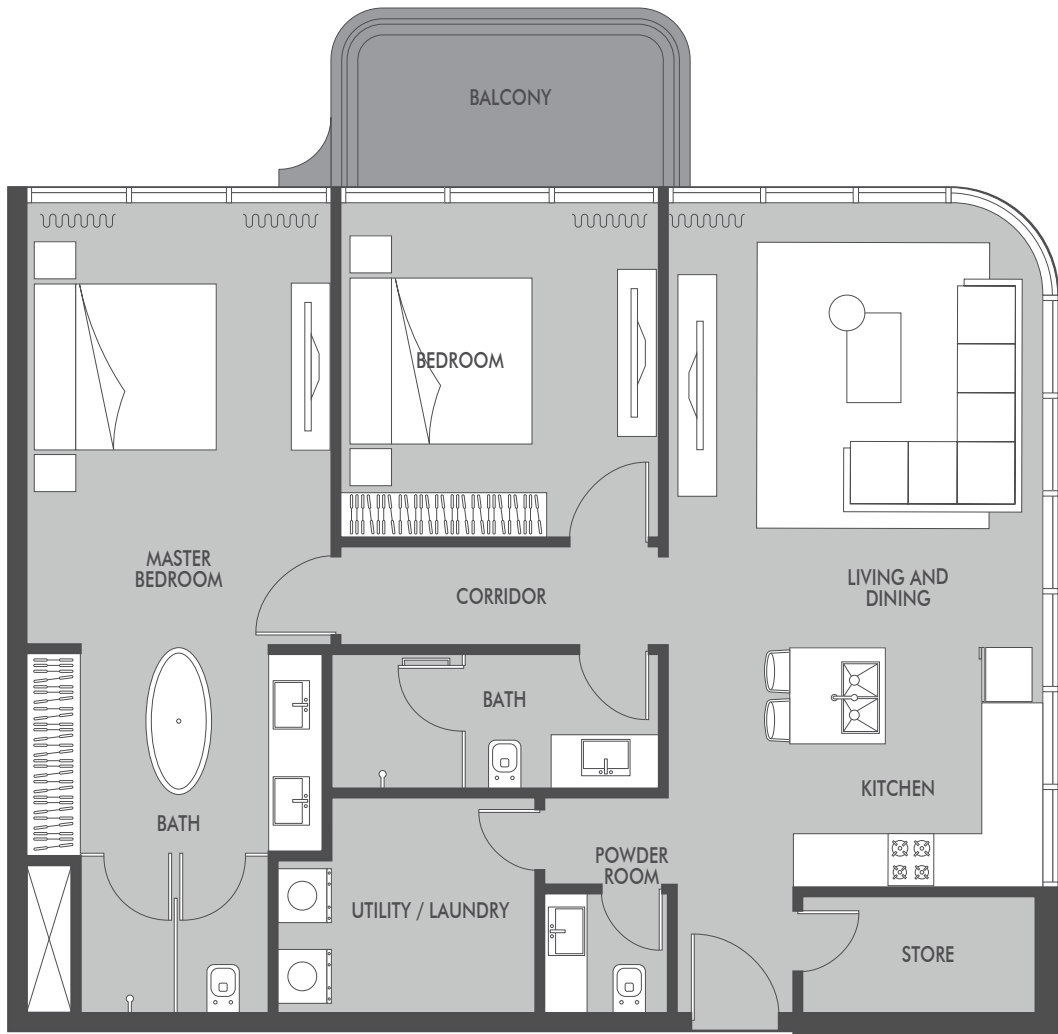


ELEVATION D

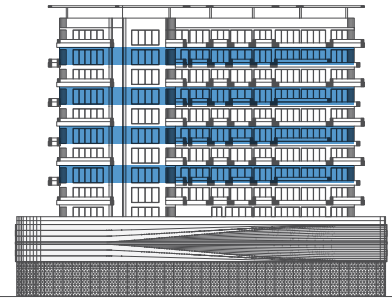
APARTMENT AREA  
775.00 SQ.FT.  
  
TERRACE AREA  
86.10 SQ.FT.  
  
TOTAL AREA  
861.10 SQ.FT.

2-BEDROOM  
TYPE B

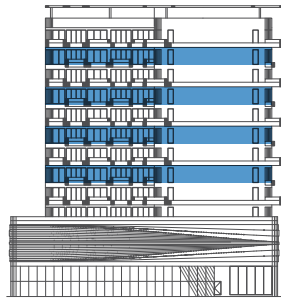
SEASIDE  
BY PRESTIGE ONE



3<sup>rd</sup>, 5<sup>th</sup>, 7<sup>th</sup> & 9<sup>th</sup> FLOORS



ELEVATION B



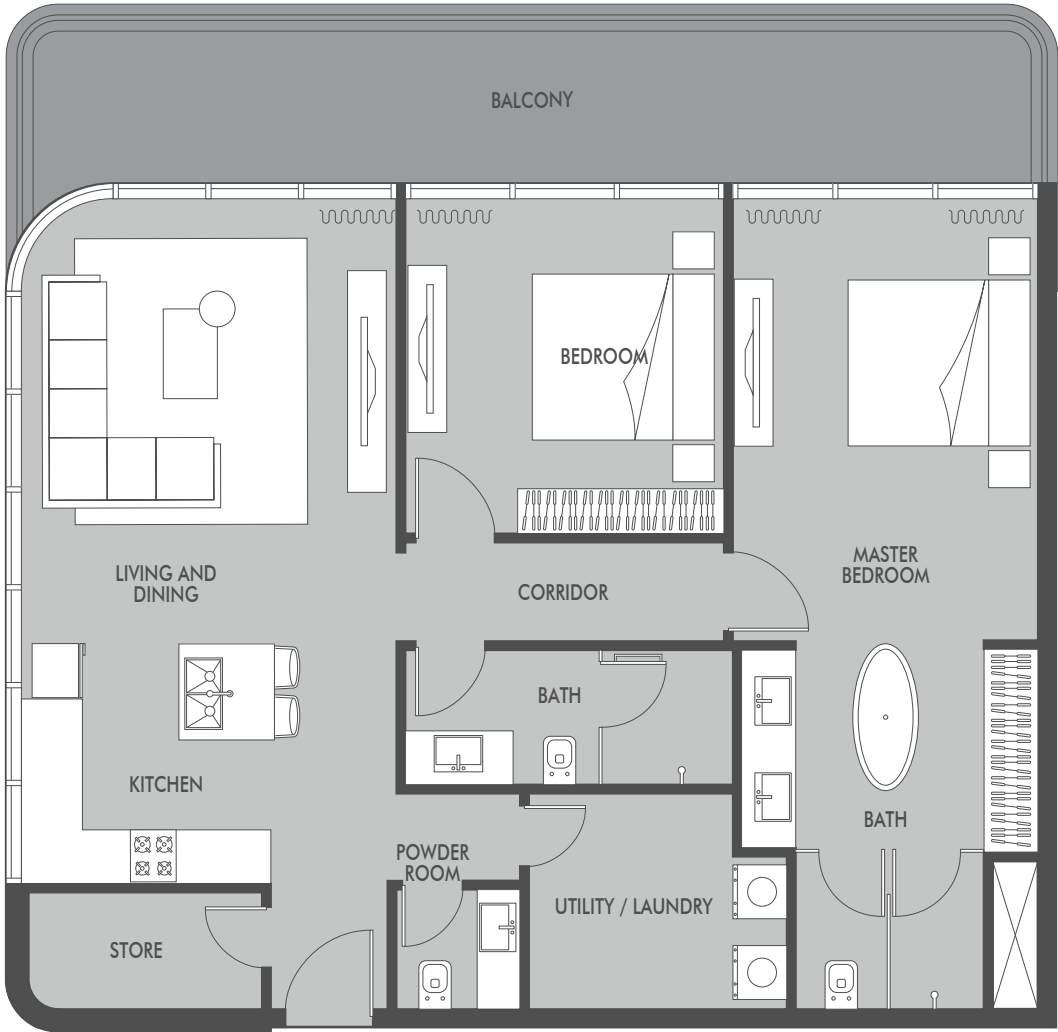
ELEVATION D

APARTMENT AREA  
1162.00 SQ.FT.  
  
TERRACE AREA  
86.10 SQ.FT.  
  
TOTAL AREA  
1248.10 SQ.FT.



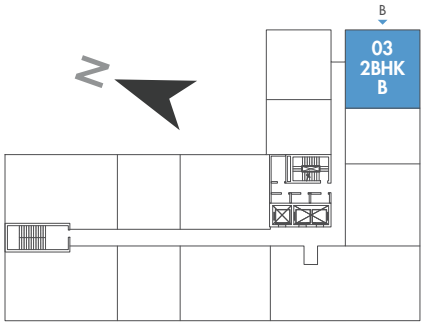
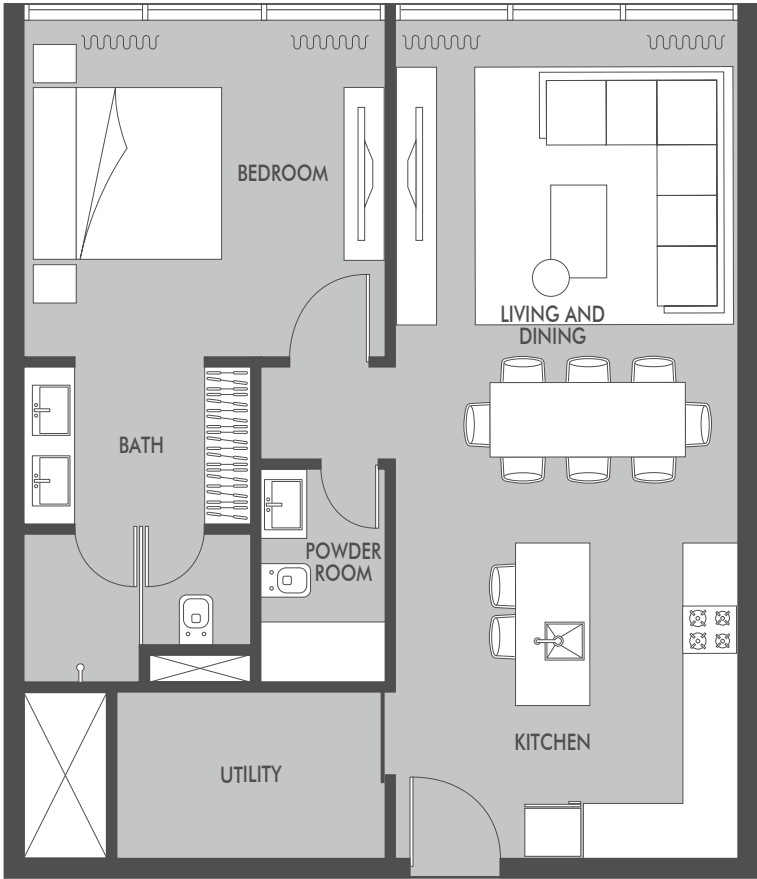
2-BEDROOM  
TYPE B

SEASIDE  
BY PRESTIGE ONE

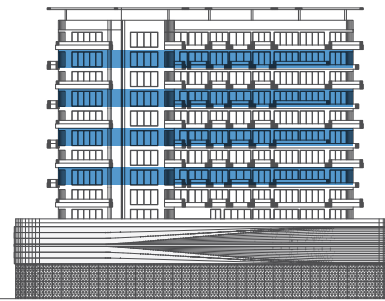


1-BEDROOM

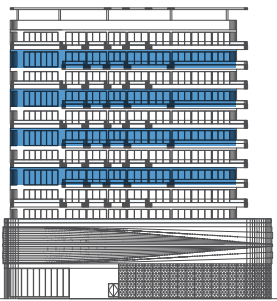
SEASIDE  
BY PRESTIGE ONE



3<sup>rd</sup>, 5<sup>th</sup>, 7<sup>th</sup> & 9<sup>th</sup> FLOORS

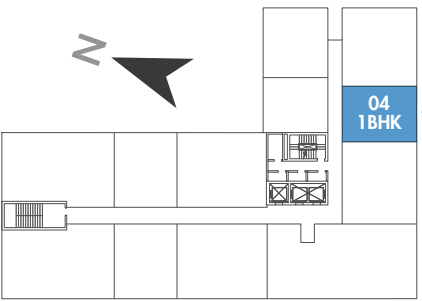


ELEVATION B

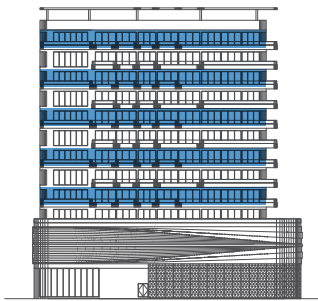


ELEVATION C

APARTMENT AREA  
1162.00 SQ.FT.  
  
TERRACE AREA  
258.30 SQ.FT.  
  
TOTAL AREA  
1420.30 SQ.FT.



3<sup>rd</sup>, 5<sup>th</sup>, 7<sup>th</sup> & 9<sup>th</sup> FLOORS



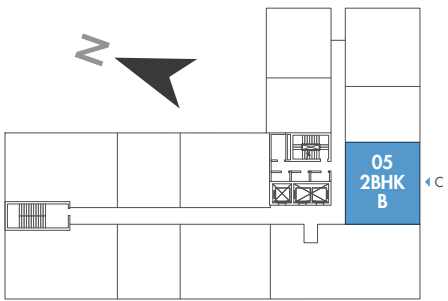
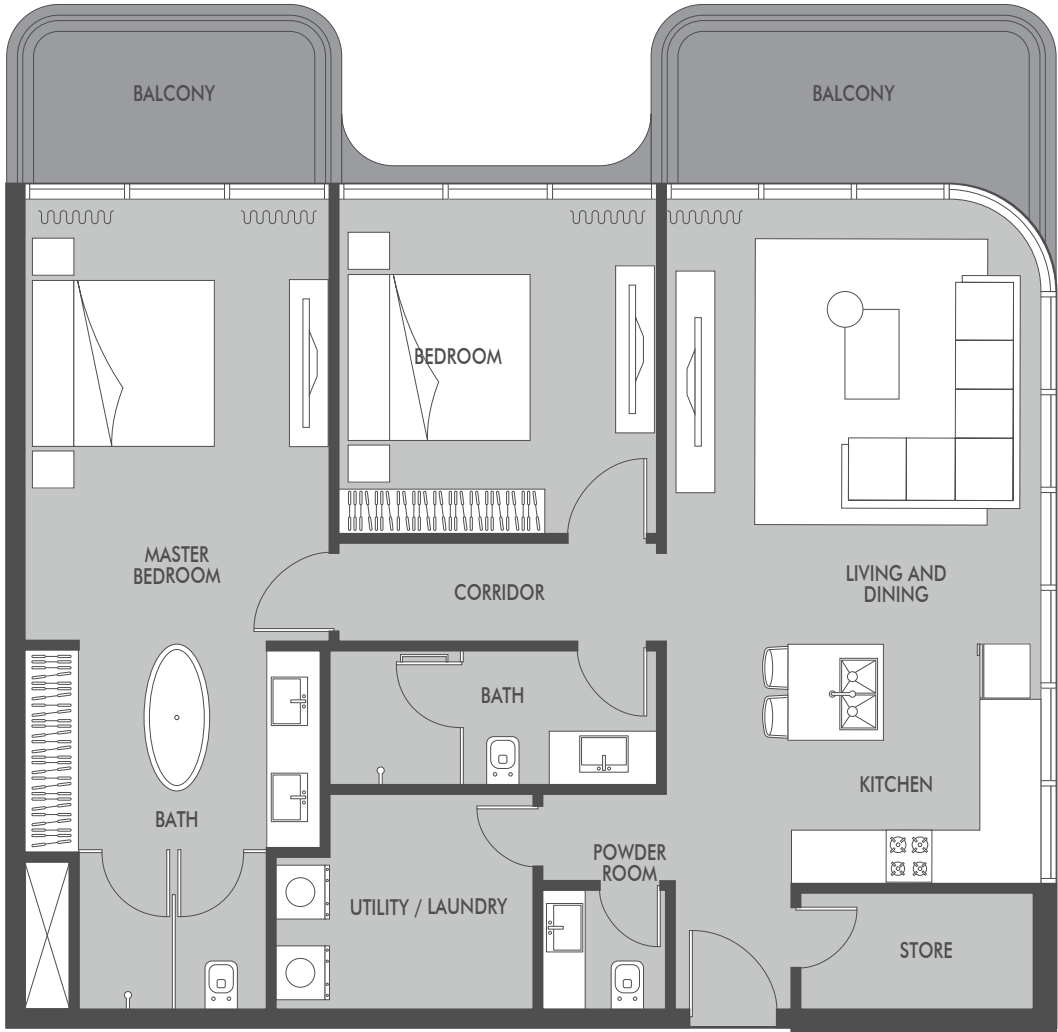
ELEVATION C

APARTMENT AREA  
775.00 SQ.FT.  
  
TERRACE AREA  
(none)  
  
TOTAL AREA  
775.00 SQ.FT.

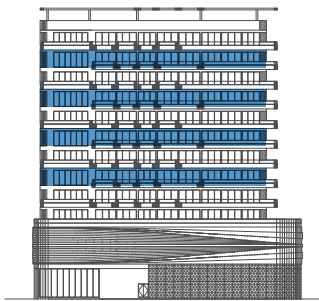


2-BEDROOM  
TYPE B

SEASIDE  
BY PRESTIGE ONE



3<sup>rd</sup>, 5<sup>th</sup>, 7<sup>th</sup> & 9<sup>th</sup> FLOORS



APARTMENT AREA  
1152.00 SQ.FT.

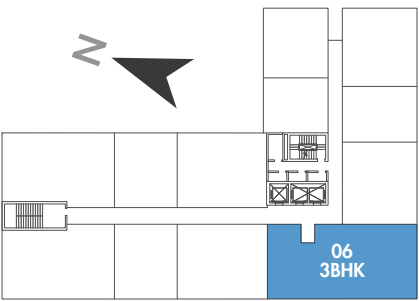
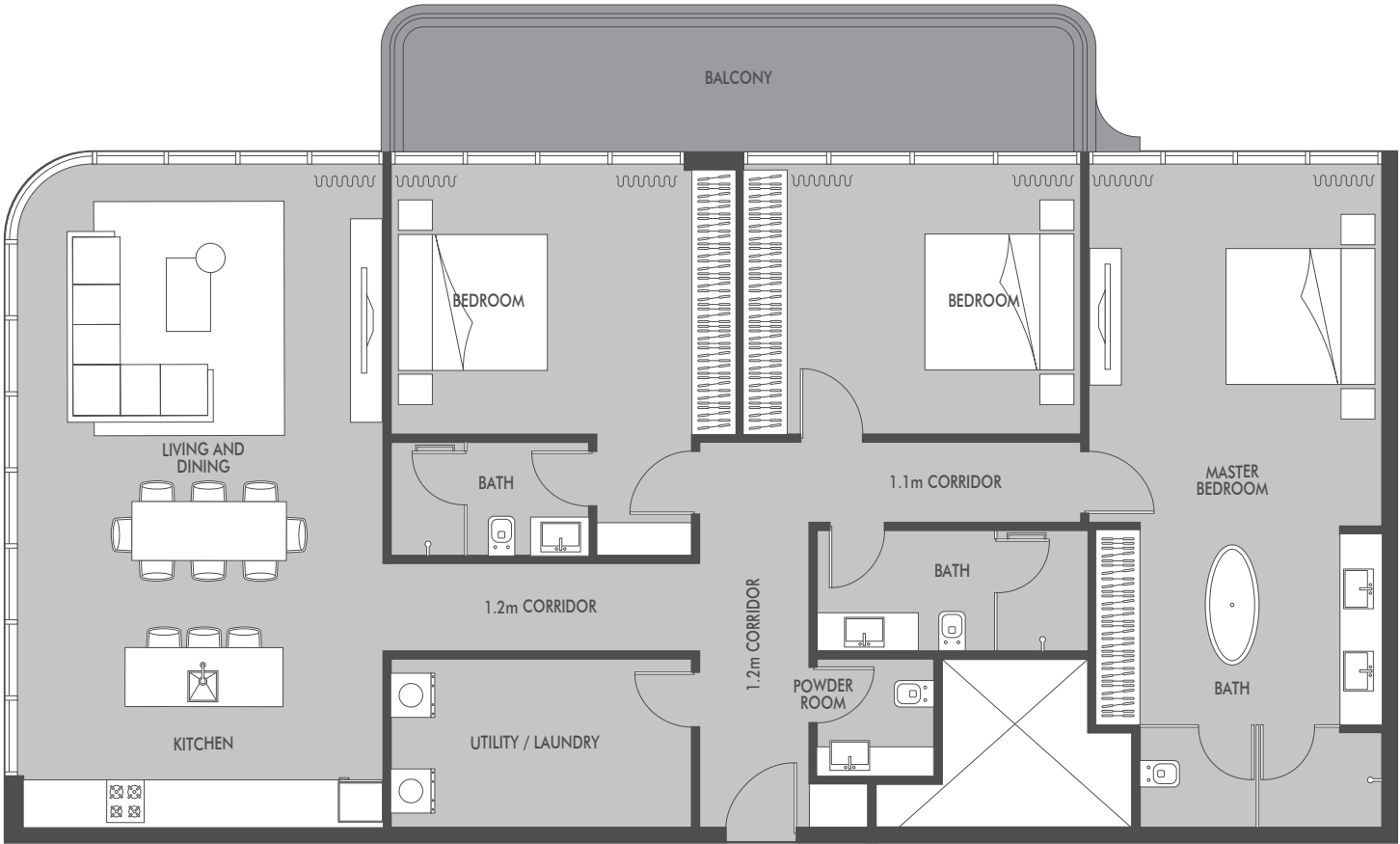
TERRACE AREA  
172.20 SQ.FT.

TOTAL AREA  
1324.20 SQ.FT.

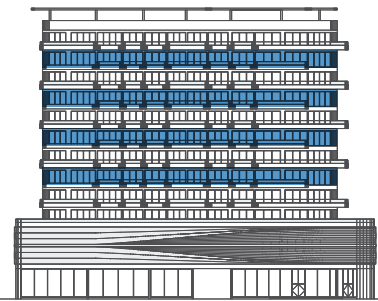
All drawings and dimensions are approximate. Drawings are not to scale and are subject to change without notice. The developer reserves the right to make revisions. The units are measured at typical floor in the building and columns may vary in size depending on the floor level. The furnishings and accessories shown are for representation only. The length and width of the Unit and balcony varies depending on which floor and which orientation the unit is located within the building to comply with the building authority regulations. Apartment unit sizes may vary. Actual unit sizes will be reflected on the Sales and Purchase Agreement.

3-BEDROOM

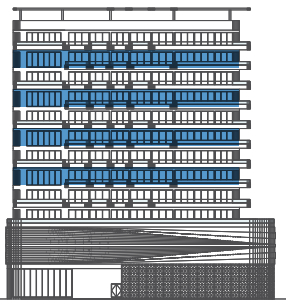
SEASIDE  
BY PRESTIGE ONE



2<sup>nd</sup>, 4<sup>th</sup>, 6<sup>th</sup>, 8<sup>th</sup> & 10<sup>th</sup> FLOORS



ELEVATION A



ELEVATION C

APARTMENT AREA  
1829.80 SQ.FT.

TERRACE AREA  
204.50 SQ.FT.

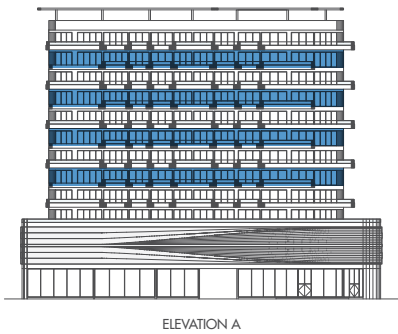
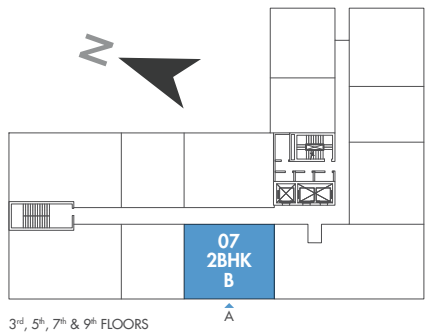
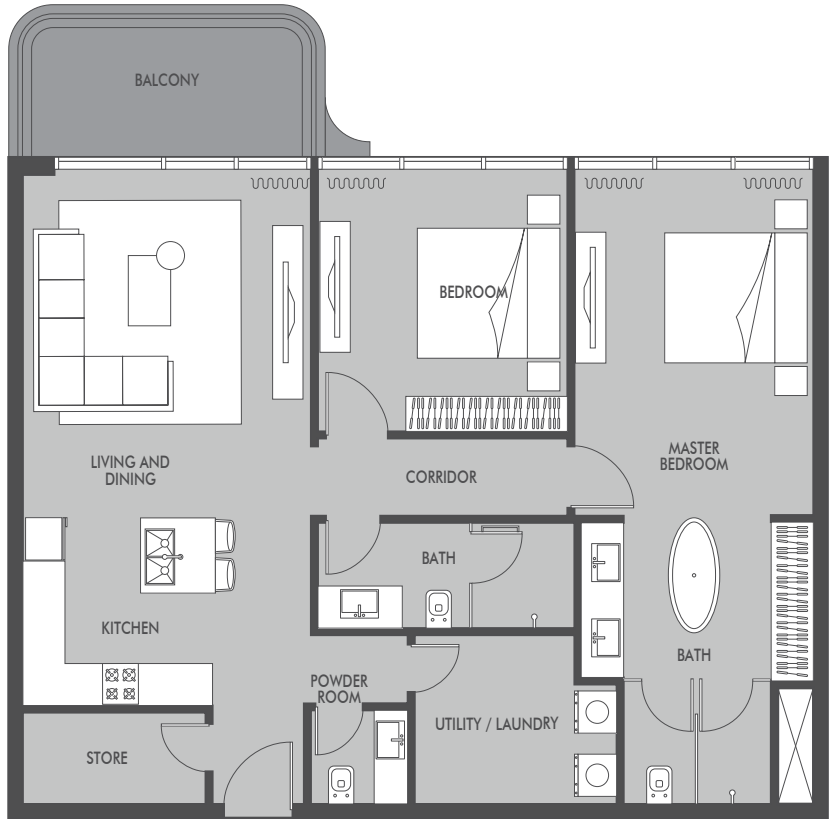
TOTAL AREA  
2034.30 SQ.FT.

All drawings and dimensions are approximate. Drawings are not to scale and are subject to change without notice. The developer reserves the right to make revisions. The units are measured at typical floor in the building and columns may vary in size depending on the floor level. The furnishings and accessories shown are for representation only. The length and width of the Unit and balcony varies depending on which floor and which orientation the unit is located within the building to comply with the building authority regulations. Apartment unit sizes may vary. Actual unit sizes will be reflected on the Sales and Purchase Agreement.



2-BEDROOM  
TYPE B

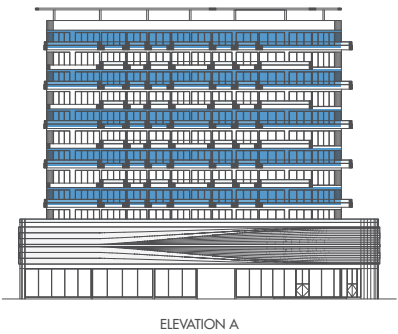
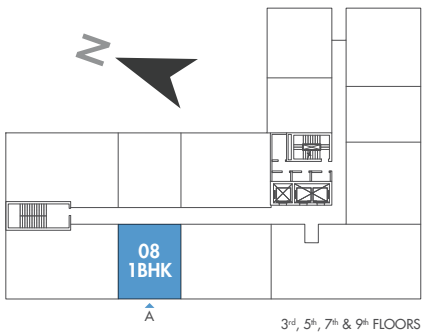
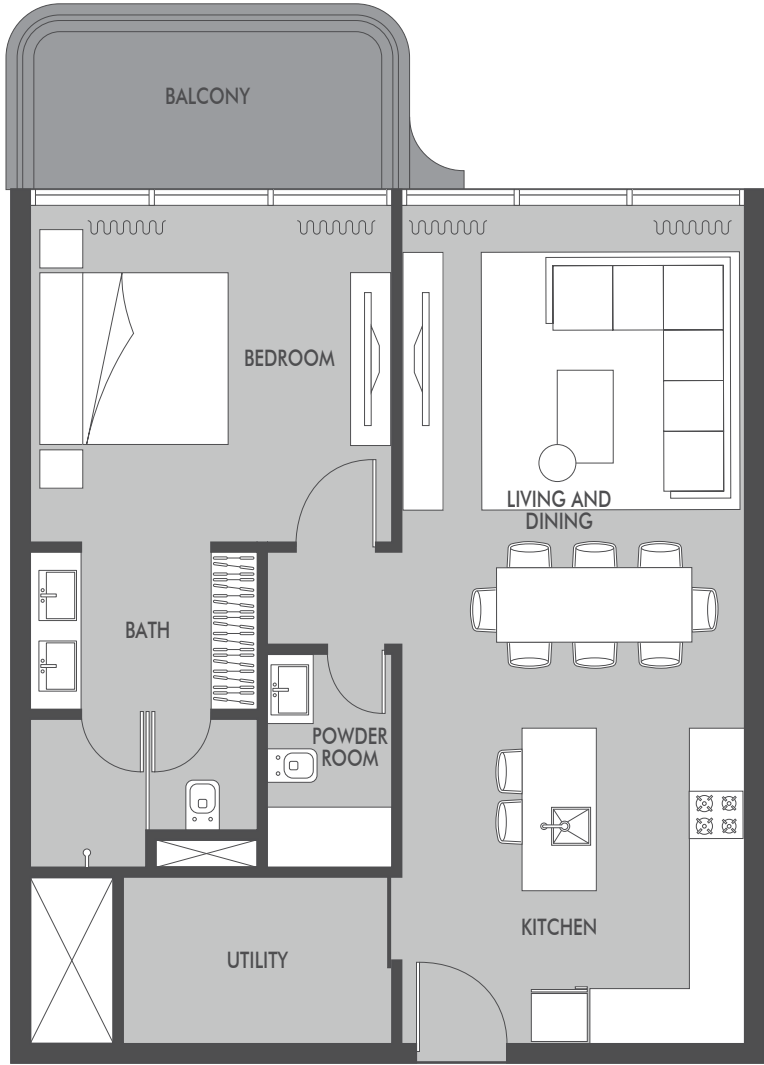
SEASIDE  
BY PRESTIGE ONE



APARTMENT AREA  
1152.00 SQ.FT.  
  
TERRACE AREA  
96.90 SQ.FT.  
  
TOTAL AREA  
1248.90 SQ.FT.

1-BEDROOM

SEASIDE  
BY PRESTIGE ONE



APARTMENT AREA  
775.00 SQ.FT.  
  
TERRACE AREA  
96.90 SQ.FT.  
  
TOTAL AREA  
871.90 SQ.FT.

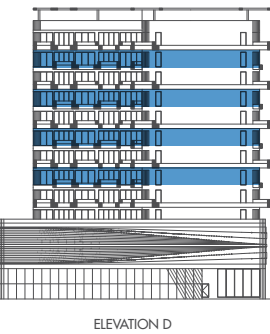
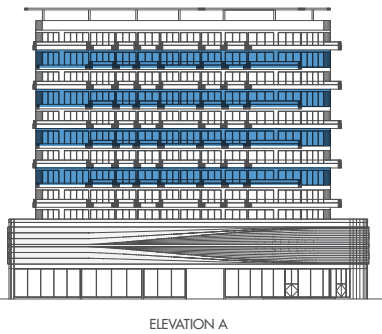
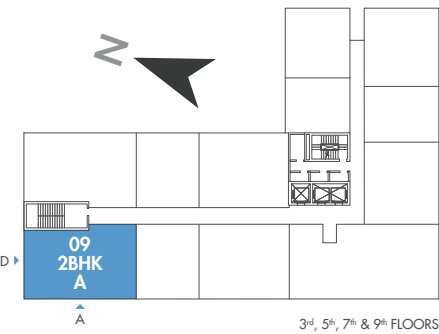
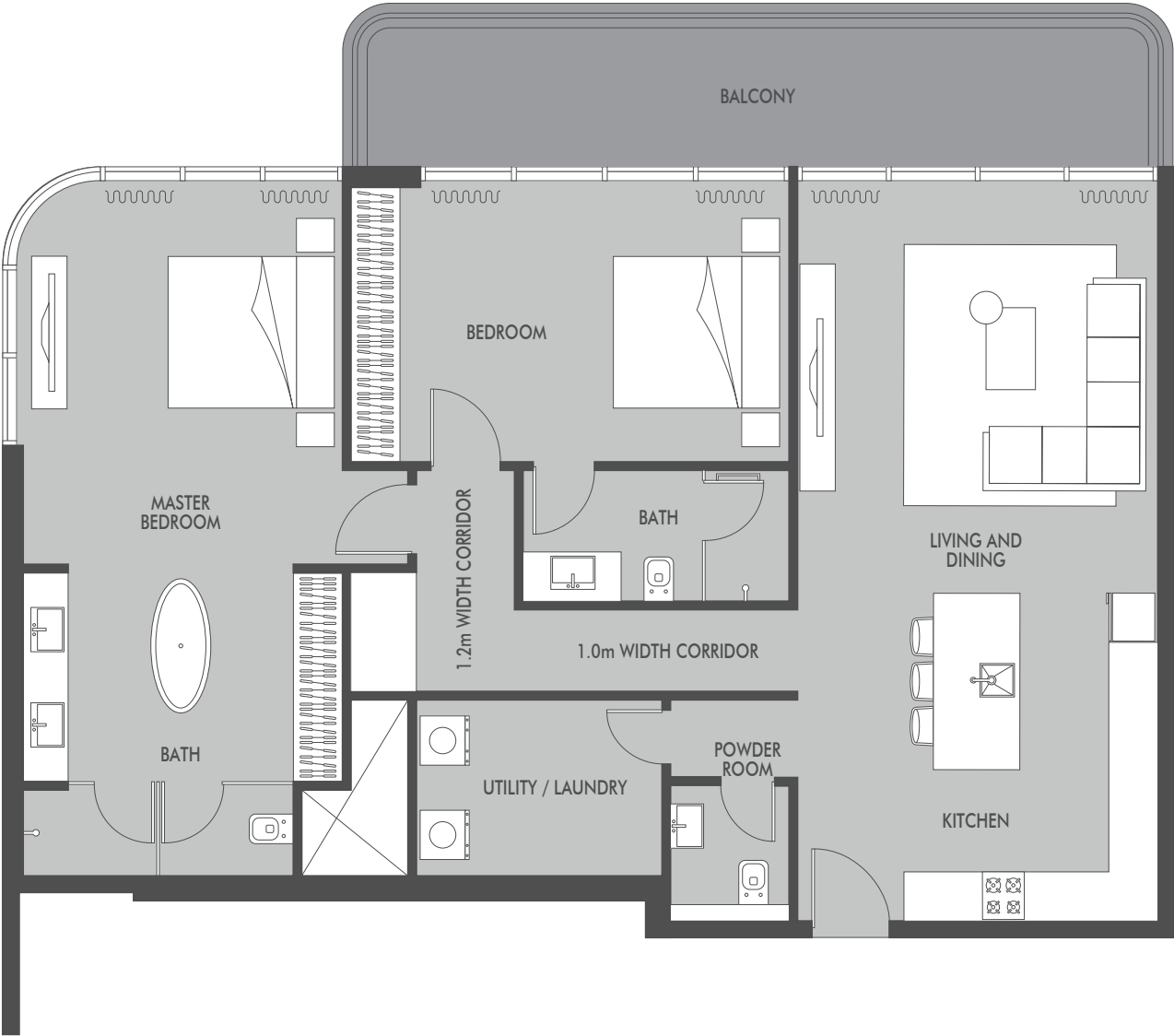
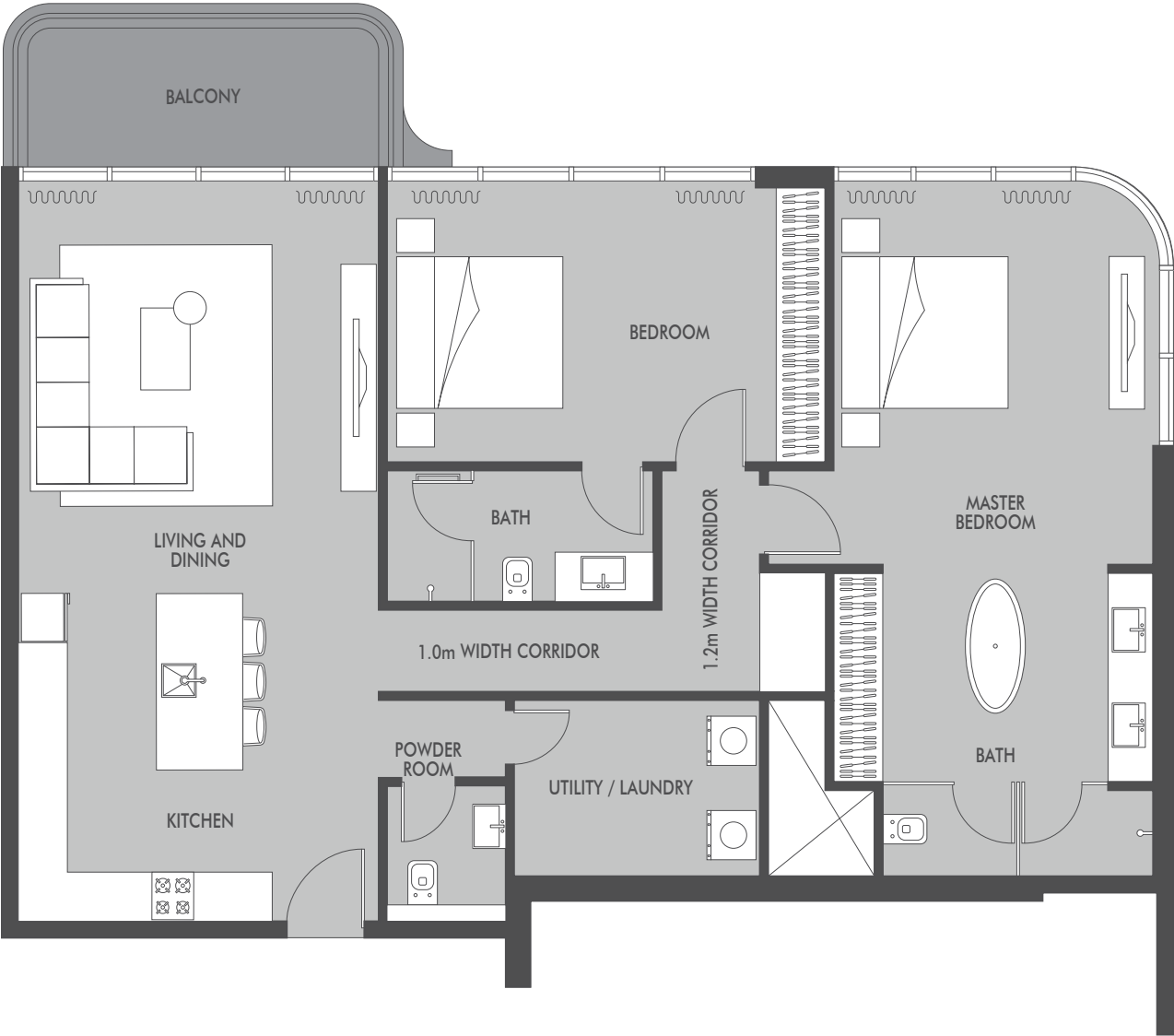


2-BEDROOM  
TYPE A

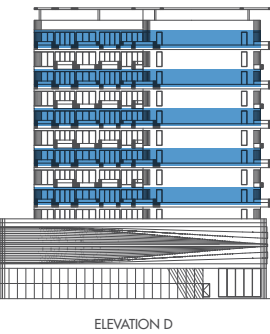
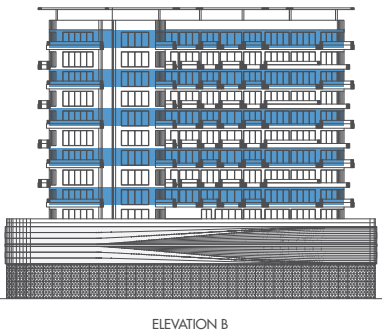
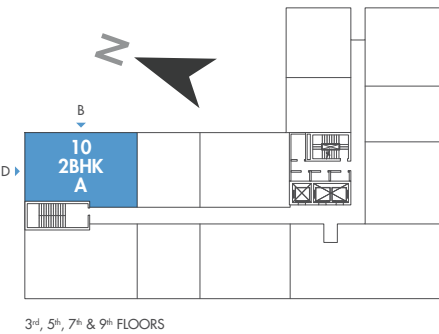
SEASIDE  
BY PRESTIGE ONE

2-BEDROOM  
TYPE A

SEASIDE  
BY PRESTIGE ONE



APARTMENT AREA  
1356.00 SQ.FT.  
TERRACE AREA  
107.60 SQ.FT.  
TOTAL AREA  
1463.60 SQ.FT.

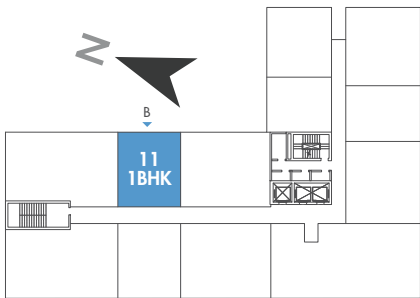
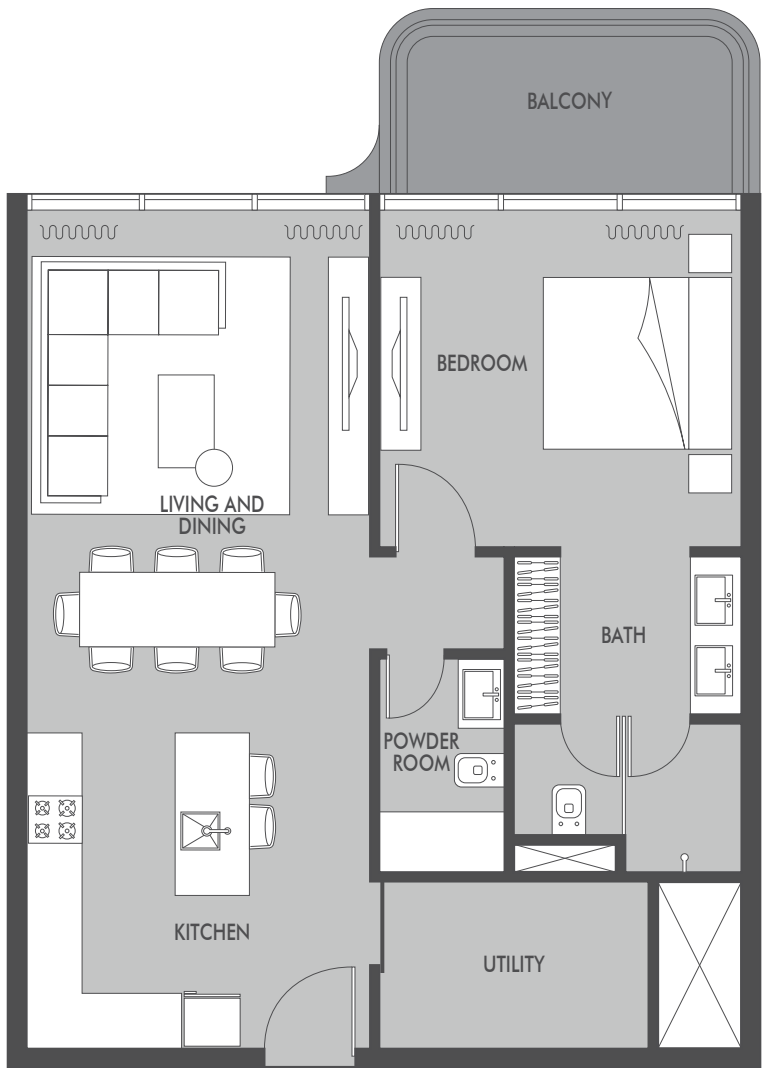


APARTMENT AREA  
1346.00 SQ.FT.  
TERRACE AREA  
215.30 SQ.FT.  
TOTAL AREA  
1561.30 SQ.FT.

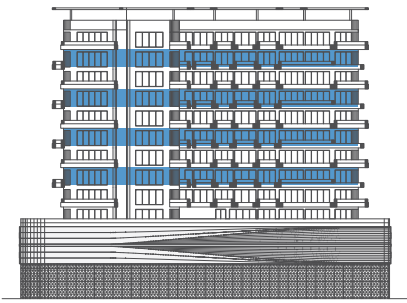


1-BEDROOM

SEASIDE  
BY PRESTIGE ONE



3<sup>rd</sup>, 5<sup>th</sup>, 7<sup>th</sup> & 9<sup>th</sup> FLOORS



ELEVATION B

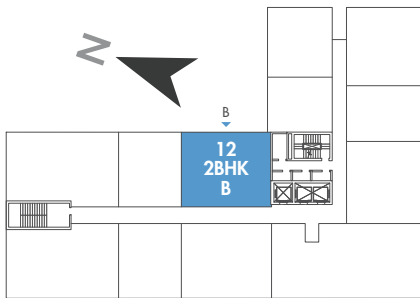
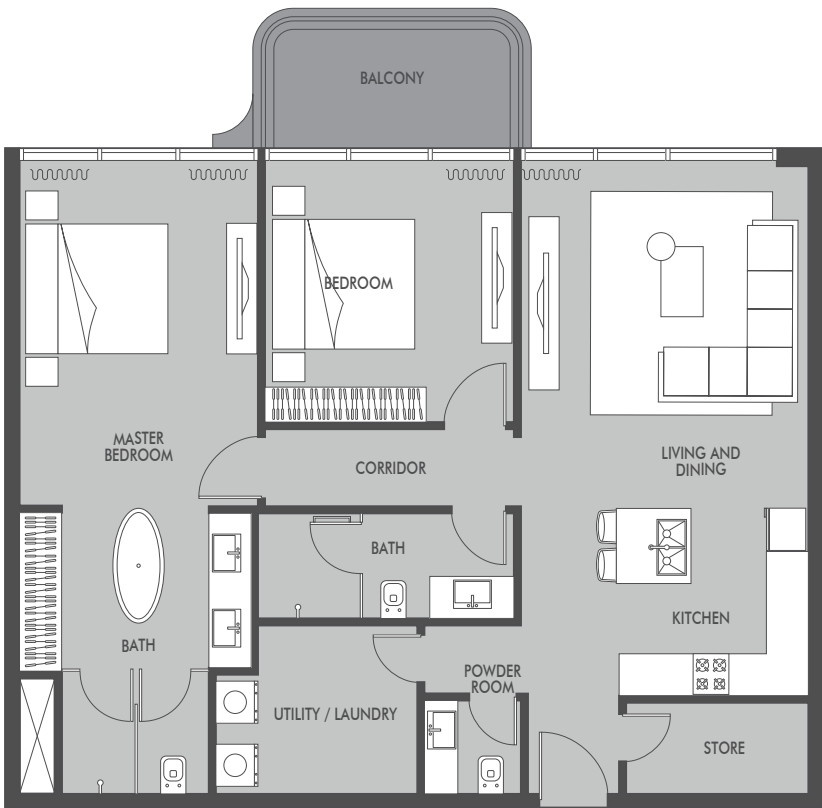
APARTMENT AREA  
775.00 SQ.FT.

TERRACE AREA  
96.90 SQ.FT.

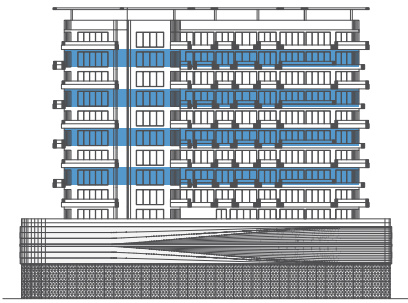
TOTAL AREA  
871.90 SQ.FT.

2-BEDROOM  
TYPE B

SEASIDE  
BY PRESTIGE ONE



3<sup>rd</sup>, 5<sup>th</sup>, 7<sup>th</sup> & 9<sup>th</sup> FLOORS



ELEVATION B

APARTMENT AREA  
1152.00 SQ.FT.

TERRACE AREA  
86.10 SQ.FT.

TOTAL AREA  
1238.10 SQ.FT.





## PRESTIGE ONE

Prestige One Developments brings a fresh and innovative approach to property development in Dubai.

Since 2007, Prestige has been an influential force in the city's real estate landscape - generating multi-billion dollar investments.

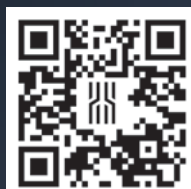
At the core of Prestige One Developments' philosophy lie the cardinal principles of integrity, transparency, and an unwavering dedication to exceptional service and delivery.

With a reputation built upon a foundation of trust and excellence, Prestige One Developments continues to redefine the standards of luxury living, shaping the future of urban sophistication.





Please scan the code to  
know about our  
Terms and Conditions



[prestigeone.ae](https://prestigeone.ae)

800 PRESTIGE