



THE BEACH RESIDENCES

AT AL MARJAN ISLAND

# FLOOR PLANS

By



RANGE  
RAS AL KHAIMAH









THE BEACH RESIDENCES  
AT AL MARJAN ISLAND



RANGE  
RAS AL KHAIMAH

# WEST WING FLOOR 01

## UNIT - W 101

### 1 BEDROOM

Internal living Area  
**850.29 sq.ft.**

Outdoor Living Area  
**116.50 sq.ft.**

Total Living Area  
**966.79 sq.ft.**

#### DISCLAIMER:

All measurements are indicative and for marketing purposes only. All efforts have been made to ensure their accuracy, however these layouts are subject to change at the discretion of the developer and should not be relied upon as final. The actual area may vary from the stated area and the developer reserves the right to make any revisions / alterations, at its absolute discretion, without any liability whatsoever.





## UNIT - W 102

### STUDIO

Internal living Area  
**522.70 sq.ft.**

Outdoor Living Area  
**146.28 sq.ft.**

Total Living Area  
**668.98 sq.ft.**

#### DISCLAIMER:

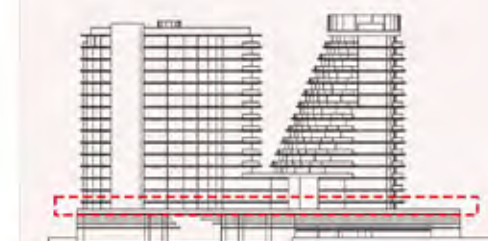
All measurements are indicative and for marketing purposes only. All efforts have been made to ensure their accuracy, however these layouts are subject to change at the discretion of the developer and should not be relied upon as final. The actual area may vary from the stated area and the developer reserves the right to make any revisions / alterations, at its absolute discretion, without any liability whatsoever.



#### KEY PLAN



#### KEY ELEVATION



## UNIT - W 103

## 1 BEDROOM

Internal living Area  
**898.72 sq.ft.**

Outdoor Living Area  
**309.77 sq.ft.**

Total Living Area  
**1208.49 sq.ft.**

### DISCLAIMER:

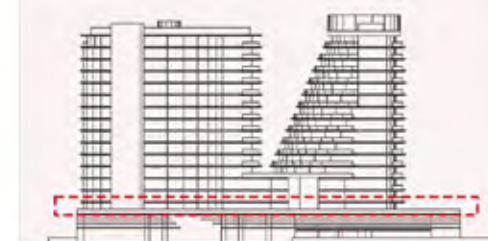
All measurements are indicative and for marketing purposes only. All efforts have been made to ensure their accuracy, however these layouts are subject to change at the discretion of the developer and should not be relied upon as final. The actual area may vary from the stated area and the developer reserves the right to make any revisions / alterations, at its absolute discretion, without any liability whatsoever.



### KEY PLAN



### KEY ELEVATION



## UNIT - W 104

### STUDIO

Internal living Area  
**486.13 sq.ft.**

Outdoor Living Area  
**160.09 sq.ft.**

Total Living Area  
**646.22 sq.ft.**

#### DISCLAIMER:

All measurements are indicative and for marketing purposes only. All efforts have been made to ensure their accuracy, however these layouts are subject to change at the discretion of the developer and should not be relied upon as final. The actual area may vary from the stated area and the developer reserves the right to make any revisions / alterations, at its absolute discretion, without any liability whatsoever.





## UNIT - W 105

### STUDIO

Internal living Area  
**526.22 sq.ft.**

Outdoor Living Area  
**162.90 sq.ft.**

Total Living Area  
**689.12 sq.ft.**

#### DISCLAIMER:

All measurements are indicative and for marketing purposes only. All efforts have been made to ensure their accuracy, however these layouts are subject to change at the discretion of the developer and should not be relied upon as final. The actual area may vary from the stated area and the developer reserves the right to make any revisions / alterations, at its absolute discretion, without any liability whatsoever.



#### KEY PLAN



#### KEY ELEVATION





## UNIT - W 106

### STUDIO

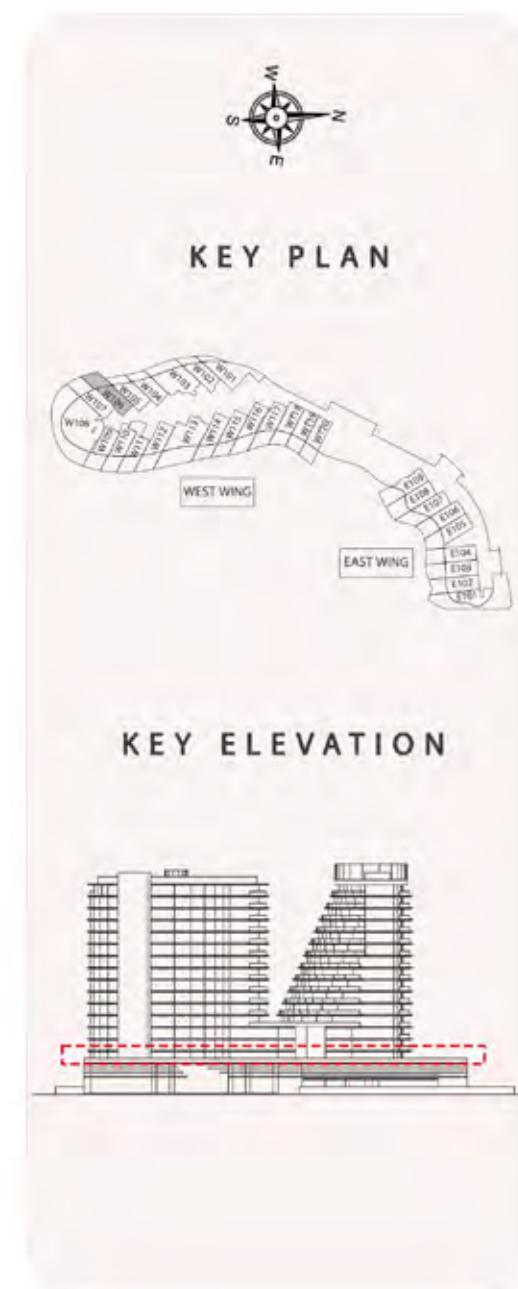
Internal living Area  
**498.91 sq.ft.**

Outdoor Living Area  
**294.53 sq.ft.**

Total Living Area  
**793.44 sq.ft.**

#### DISCLAIMER:

All measurements are indicative and for marketing purposes only. All efforts have been made to ensure their accuracy, however these layouts are subject to change at the discretion of the developer and should not be relied upon as final. The actual area may vary from the stated area and the developer reserves the right to make any revisions / alterations, at its absolute discretion, without any liability whatsoever.



## UNIT - W 107

### STUDIO

Internal living Area  
**508.48 sq.ft.**

Outdoor Living Area  
**279.45 sq.ft.**

Total Living Area  
**787.92 sq.ft.**

#### DISCLAIMER:

All measurements are indicative and for marketing purposes only. All efforts have been made to ensure their accuracy, however these layouts are subject to change at the discretion of the developer and should not be relied upon as final. The actual area may vary from the stated area and the developer reserves the right to make any revisions / alterations, at its absolute discretion, without any liability whatsoever.





## UNIT - W 108

## 2 BEDROOM

Internal living Area  
**1533.64 sq.ft.**

Outdoor Living Area  
**1215.95 sq.ft.**

Total Living Area  
**2749.59 sq.ft.**

### DISCLAIMER:

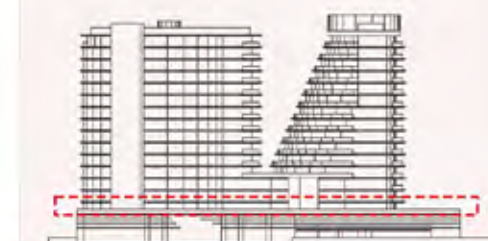
All measurements are indicative and for marketing purposes only. All efforts have been made to ensure their accuracy, however these layouts are subject to change at the discretion of the developer and should not be relied upon as final. The actual area may vary from the stated area and the developer reserves the right to make any revisions / alterations, at its absolute discretion, without any liability whatsoever.



### KEY PLAN



### KEY ELEVATION



## West Wing - 1<sup>st</sup> Floor

### UNIT - W 109

## STUDIO

Internal living Area  
**451.92 sq.ft.**

Outdoor Living Area  
**287.60 sq.ft.**

Total Living Area  
**739.52 sq.ft.**

#### DISCLAIMER:

All measurements are indicative and for marketing purposes only. All efforts have been made to ensure their accuracy, however these layouts are subject to change at the discretion of the developer and should not be relied upon as final. The actual area may vary from the stated area and the developer reserves the right to make any revisions / alterations, at its absolute discretion, without any liability whatsoever.



### KEY PLAN



### KEY ELEVATION





## West Wing - 1<sup>st</sup> Floor

### UNIT - W 110

## STUDIO

Internal living Area  
**483.24 sq.ft.**

Outdoor Living Area  
**267.20 sq.ft.**

Total Living Area  
**750.44 sq.ft.**

#### DISCLAIMER:

All measurements are indicative and for marketing purposes only. All efforts have been made to ensure their accuracy, however these layouts are subject to change at the discretion of the developer and should not be relied upon as final.

The actual area may vary from the stated area and the developer reserves the right to make any revisions / alterations, at its absolute discretion, without any liability whatsoever.



### KEY PLAN



### KEY ELEVATION



## West Wing - 1<sup>st</sup> Floor

### UNIT - W 111

## STUDIO

Internal living Area  
**502.65 sq.ft.**

Outdoor Living Area  
**288.38 sq.ft.**

Total Living Area  
**791.03 sq.ft.**

#### DISCLAIMER:

All measurements are indicative and for marketing purposes only. All efforts have been made to ensure their accuracy, however these layouts are subject to change at the discretion of the developer and should not be relied upon as final. The actual area may vary from the stated area and the developer reserves the right to make any revisions / alterations, at its absolute discretion, without any liability whatsoever.



### KEY PLAN



### KEY ELEVATION





## West Wing - 1<sup>st</sup> Floor

### UNIT - W 112

## STUDIO

Internal living Area  
**523.65 sq.ft.**

Outdoor Living Area  
**319.55 sq.ft.**

Total Living Area  
**843.20 sq.ft.**

#### DISCLAIMER:

All measurements are indicative and for marketing purposes only. All efforts have been made to ensure their accuracy, however these layouts are subject to change at the discretion of the developer and should not be relied upon as final. The actual area may vary from the stated area and the developer reserves the right to make any revisions / alterations, at its absolute discretion, without any liability whatsoever.



### KEY PLAN



### KEY ELEVATION



## UNIT - W 113

### 1 BEDROOM

Internal living Area  
**903.49 sq.ft.**

Outdoor Living Area  
**616.69 sq.ft.**

Total Living Area  
**1520.18 sq.ft.**



#### DISCLAIMER:

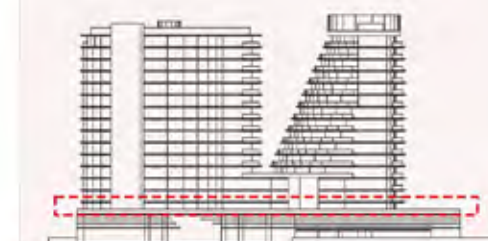
All measurements are indicative and for marketing purposes only. All efforts have been made to ensure their accuracy, however these layouts are subject to change at the discretion of the developer and should not be relied upon as final. The actual area may vary from the stated area and the developer reserves the right to make any revisions / alterations, at its absolute discretion, without any liability whatsoever.



#### KEY PLAN



#### KEY ELEVATION



## UNIT - W 114

### STUDIO

Internal living Area  
**514.17 sq.ft.**

Outdoor Living Area  
**253.76 sq.ft.**

Total Living Area  
**767.94 sq.ft.**

#### DISCLAIMER:

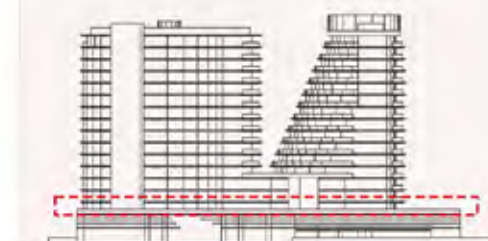
All measurements are indicative and for marketing purposes only. All efforts have been made to ensure their accuracy, however these layouts are subject to change at the discretion of the developer and should not be relied upon as final. The actual area may vary from the stated area and the developer reserves the right to make any revisions / alterations, at its absolute discretion, without any liability whatsoever.



#### KEY PLAN



#### KEY ELEVATION





## UNIT - W 115

# STUDIO

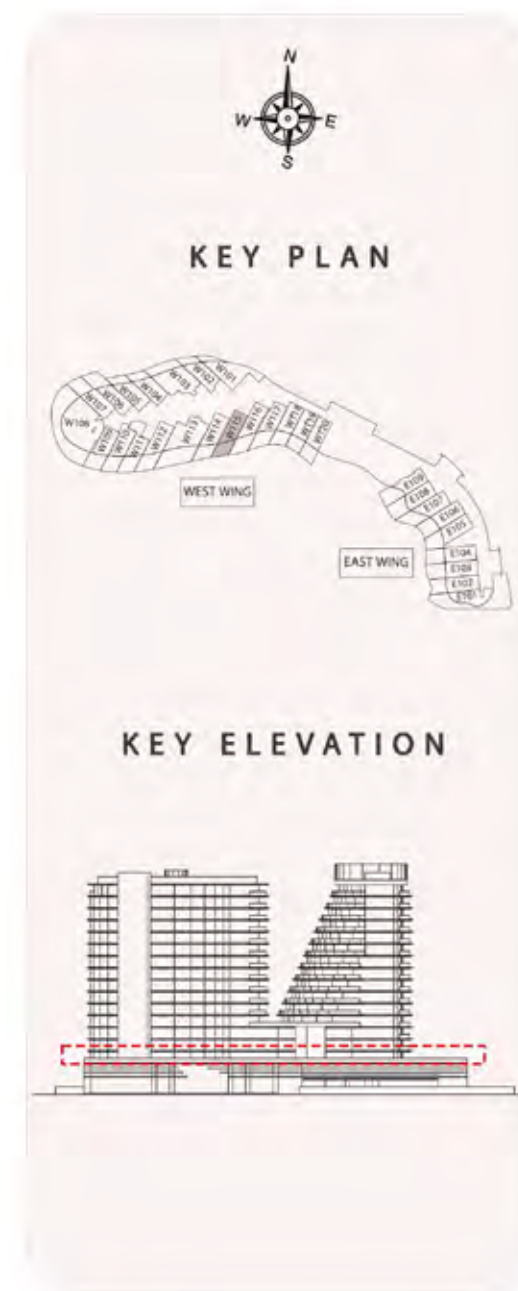
Internal living Area  
**477.94 sq.ft.**

Outdoor Living Area  
**243.24 sq.ft.**

Total Living Area  
**721.18 sq.ft.**

### DISCLAIMER:

All measurements are indicative and for marketing purposes only. All efforts have been made to ensure their accuracy, however these layouts are subject to change at the discretion of the developer and should not be relied upon as final. The actual area may vary from the stated area and the developer reserves the right to make any revisions / alterations, at its absolute discretion, without any liability whatsoever.



## UNIT - W 116

### STUDIO

Internal living Area  
**503.65 sq.ft.**

Outdoor Living Area  
**311.61 sq.ft.**

Total Living Area  
**815.26 sq.ft.**

#### DISCLAIMER:

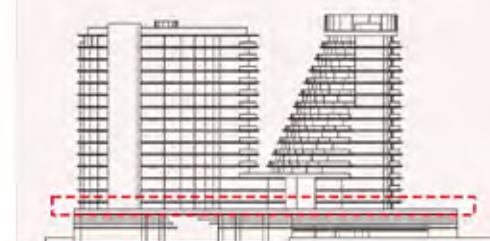
All measurements are indicative and for marketing purposes only. All efforts have been made to ensure their accuracy, however these layouts are subject to change at the discretion of the developer and should not be relied upon as final. The actual area may vary from the stated area and the developer reserves the right to make any revisions / alterations, at its absolute discretion, without any liability whatsoever.



#### KEY PLAN



#### KEY ELEVATION



## UNIT - W 117

# STUDIO

Internal living Area  
**469.78 sq.ft.**

Outdoor Living Area  
**293.88 sq.ft.**

Total Living Area  
**763.66 sq.ft.**

### DISCLAIMER:

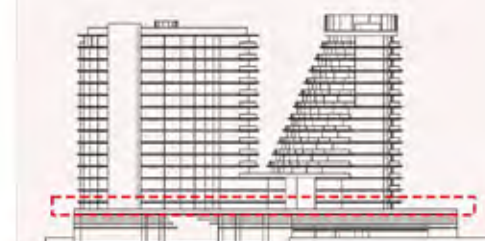
All measurements are indicative and for marketing purposes only. All efforts have been made to ensure their accuracy, however these layouts are subject to change at the discretion of the developer and should not be relied upon as final. The actual area may vary from the stated area and the developer reserves the right to make any revisions / alterations, at its absolute discretion, without any liability whatsoever.



## KEY PLAN



## KEY ELEVATION





## West Wing - 1<sup>st</sup> Floor

### UNIT - W 118

## STUDIO

Internal living Area  
**476.20 sq.ft.**

Outdoor Living Area  
**229.68 sq.ft.**

Total Living Area  
**705.87 sq.ft.**

#### DISCLAIMER:

All measurements are indicative and for marketing purposes only. All efforts have been made to ensure their accuracy, however these layouts are subject to change at the discretion of the developer and should not be relied upon as final. The actual area may vary from the stated area and the developer reserves the right to make any revisions / alterations, at its absolute discretion, without any liability whatsoever.



### KEY PLAN



### KEY ELEVATION



## West Wing - 1<sup>st</sup> Floor

### UNIT - W 119

## STUDIO

Internal living Area  
**449.72 sq.ft.**

Outdoor Living Area  
**216.98 sq.ft.**

Total Living Area  
**666.69 sq.ft.**

#### DISCLAIMER:

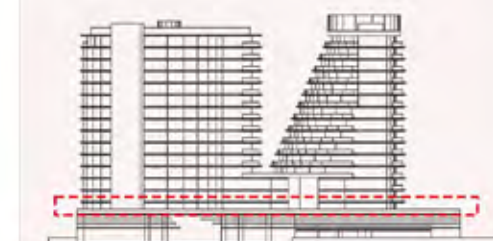
All measurements are indicative and for marketing purposes only. All efforts have been made to ensure their accuracy, however these layouts are subject to change at the discretion of the developer and should not be relied upon as final. The actual area may vary from the stated area and the developer reserves the right to make any revisions / alterations, at its absolute discretion, without any liability whatsoever.



### KEY PLAN



### KEY ELEVATION



## West Wing - 1<sup>st</sup> Floor

### UNIT - W 120

## STUDIO

Internal living Area  
**453.70 sq.ft.**

Outdoor Living Area  
**235.17 sq.ft.**

Total Living Area  
**688.87 sq.ft.**

#### DISCLAIMER:

All measurements are indicative and for marketing purposes only. All efforts have been made to ensure their accuracy, however these layouts are subject to change at the discretion of the developer and should not be relied upon as final. The actual area may vary from the stated area and the developer reserves the right to make any revisions / alterations, at its absolute discretion, without any liability whatsoever.



### KEY PLAN



### KEY ELEVATION

