



THE BEACH RESIDENCES

AT AL MARJAN ISLAND

FLOOR PLANS

By



RANGE
RAS AL KHAIMAH





THE BEACH RESIDENCES
AT AL MARJAN ISLAND



RANGE
RAS AL KHAIMAH

WEST WING FLOOR 13

UNIT - W 1301

1 BEDROOM

Internal living Area
850.29 sq.ft.

Outdoor Living Area
112.05 sq.ft.

Total Living Area
962.34 sq.ft.

DISCLAIMER:

All measurements are indicative and for marketing purposes only. All efforts have been made to ensure their accuracy, however these layouts are subject to change at the discretion of the developer and should not be relied upon as final. The actual area may vary from the stated area and the developer reserves the right to make any revisions / alterations, at its absolute discretion, without any liability whatsoever.



UNIT - W 1302

STUDIO

Internal living Area
522.70 sq.ft.

Outdoor Living Area
142.76 sq.ft.

Total Living Area
665.46 sq.ft.

DISCLAIMER:

All measurements are indicative and for marketing purposes only. All efforts have been made to ensure their accuracy, however these layouts are subject to change at the discretion of the developer and should not be relied upon as final. The actual area may vary from the stated area and the developer reserves the right to make any revisions / alterations, at its absolute discretion, without any liability whatsoever.



UNIT - W 1303

1 BEDROOM

Internal living Area
898.21 sq.ft.

Outdoor Living Area
305.19 sq.ft.

Total Living Area
1203.39 sq.ft.

DISCLAIMER:

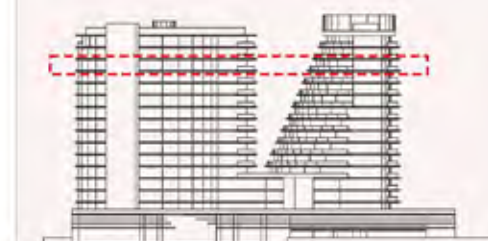
All measurements are indicative and for marketing purposes only. All efforts have been made to ensure their accuracy, however these layouts are subject to change at the discretion of the developer and should not be relied upon as final. The actual area may vary from the stated area and the developer reserves the right to make any revisions / alterations, at its absolute discretion, without any liability whatsoever.



KEY PLAN



KEY ELEVATION



UNIT - W 1304

STUDIO

Internal living Area
486.64 sq.ft.

Outdoor Living Area
156.49 sq.ft.

Total Living Area
643.13 sq.ft.

DISCLAIMER:

All measurements are indicative and for marketing purposes only. All efforts have been made to ensure their accuracy, however these layouts are subject to change at the discretion of the developer and should not be relied upon as final. The actual area may vary from the stated area and the developer reserves the right to make any revisions / alterations, at its absolute discretion, without any liability whatsoever.



UNIT - W 1305

STUDIO

Internal living Area
526.22 sq.ft.

Outdoor Living Area
160.67 sq.ft.

Total Living Area
686.88 sq.ft.

DISCLAIMER:

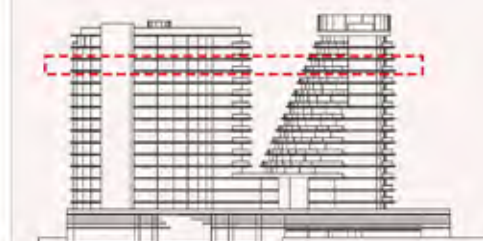
All measurements are indicative and for marketing purposes only. All efforts have been made to ensure their accuracy, however these layouts are subject to change at the discretion of the developer and should not be relied upon as final. The actual area may vary from the stated area and the developer reserves the right to make any revisions / alterations, at its absolute discretion, without any liability whatsoever.



KEY PLAN



KEY ELEVATION



UNIT - W 1306

STUDIO

Internal living Area
498.87 sq.ft.

Outdoor Living Area
137.14 sq.ft.

Total Living Area
636.01 sq.ft.

DISCLAIMER:

All measurements are indicative and for marketing purposes only. All efforts have been made to ensure their accuracy, however these layouts are subject to change at the discretion of the developer and should not be relied upon as final. The actual area may vary from the stated area and the developer reserves the right to make any revisions / alterations, at its absolute discretion, without any liability whatsoever.



UNIT - W 1307

STUDIO

Internal living Area
508.48 sq.ft.

Outdoor Living Area
112.74 sq.ft.

Total Living Area
621.22 sq.ft.

DISCLAIMER:

All measurements are indicative and for marketing purposes only. All efforts have been made to ensure their accuracy, however these layouts are subject to change at the discretion of the developer and should not be relied upon as final. The actual area may vary from the stated area and the developer reserves the right to make any revisions / alterations, at its absolute discretion, without any liability whatsoever.



UNIT - W 1308

2 BEDROOM

Internal living Area
1533.64 sq.ft.

Outdoor Living Area
681.46 sq.ft.

Total Living Area
2215.10 sq.ft.

DISCLAIMER:

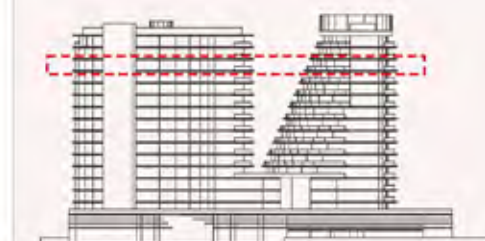
All measurements are indicative and for marketing purposes only. All efforts have been made to ensure their accuracy, however these layouts are subject to change at the discretion of the developer and should not be relied upon as final. The actual area may vary from the stated area and the developer reserves the right to make any revisions / alterations, at its absolute discretion, without any liability whatsoever.



KEY PLAN



KEY ELEVATION



UNIT - W 1309

STUDIO

Internal living Area
452.07 sq.ft.

Outdoor Living Area
143.33 sq.ft.

Total Living Area
595.39 sq.ft.

DISCLAIMER:

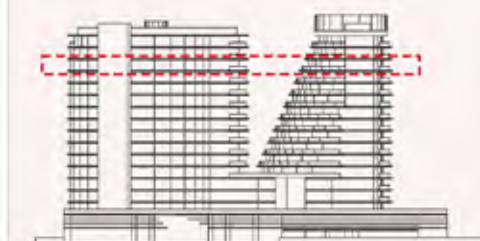
All measurements are indicative and for marketing purposes only. All efforts have been made to ensure their accuracy, however these layouts are subject to change at the discretion of the developer and should not be relied upon as final. The actual area may vary from the stated area and the developer reserves the right to make any revisions / alterations, at its absolute discretion, without any liability whatsoever.



KEY PLAN



KEY ELEVATION



UNIT - W 1310

STUDIO

Internal living Area
483.24 sq.ft.

Outdoor Living Area
124.84 sq.ft.

Total Living Area
608.07 sq.ft.

DISCLAIMER:

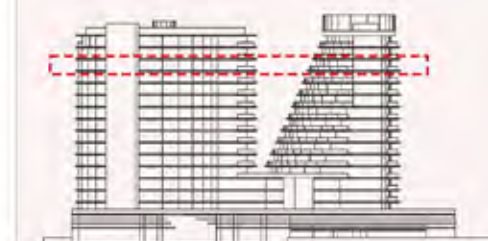
All measurements are indicative and for marketing purposes only. All efforts have been made to ensure their accuracy, however these layouts are subject to change at the discretion of the developer and should not be relied upon as final. The actual area may vary from the stated area and the developer reserves the right to make any revisions / alterations, at its absolute discretion, without any liability whatsoever.



KEY PLAN



KEY ELEVATION



UNIT - W 1311

STUDIO

Internal living Area
502.65 sq.ft.

Outdoor Living Area
130.55 sq.ft.

Total Living Area
633.21 sq.ft.

DISCLAIMER:

All measurements are indicative and for marketing purposes only. All efforts have been made to ensure their accuracy, however these layouts are subject to change at the discretion of the developer and should not be relied upon as final. The actual area may vary from the stated area and the developer reserves the right to make any revisions / alterations, at its absolute discretion, without any liability whatsoever.



UNIT - W 1312

STUDIO

Internal living Area
523.65 sq.ft.

Outdoor Living Area
152.95 sq.ft.

Total Living Area
676.60 sq.ft.

DISCLAIMER:

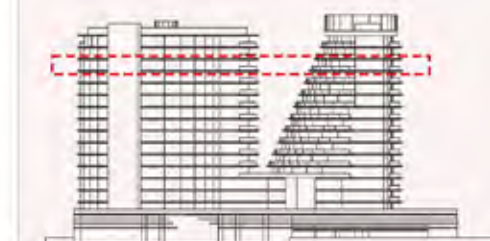
All measurements are indicative and for marketing purposes only. All efforts have been made to ensure their accuracy, however these layouts are subject to change at the discretion of the developer and should not be relied upon as final. The actual area may vary from the stated area and the developer reserves the right to make any revisions / alterations, at its absolute discretion, without any liability whatsoever.



KEY PLAN



KEY ELEVATION



UNIT - W 1313

1 BEDROOM

Internal living Area
903.49 sq.ft.

Outdoor Living Area
323.62 sq.ft.

Total Living Area
1227.11 sq.ft.



DISCLAIMER:

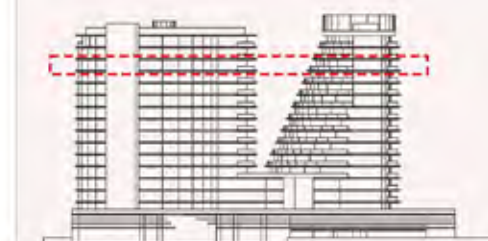
All measurements are indicative and for marketing purposes only. All efforts have been made to ensure their accuracy, however these layouts are subject to change at the discretion of the developer and should not be relied upon as final. The actual area may vary from the stated area and the developer reserves the right to make any revisions / alterations, at its absolute discretion, without any liability whatsoever.



KEY PLAN



KEY ELEVATION



UNIT - W 1314

STUDIO

Internal living Area
514.17 sq.ft.

Outdoor Living Area
126.73 sq.ft.

Total Living Area
640.91 sq.ft.

DISCLAIMER:

All measurements are indicative and for marketing purposes only. All efforts have been made to ensure their accuracy, however these layouts are subject to change at the discretion of the developer and should not be relied upon as final.

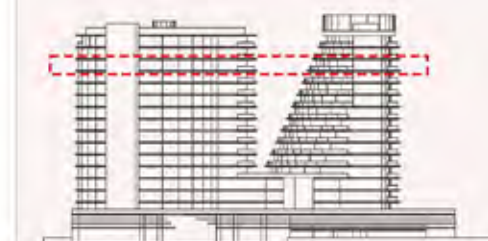
The actual area may vary from the stated area and the developer reserves the right to make any revisions / alterations, at its absolute discretion, without any liability whatsoever.



KEY PLAN



KEY ELEVATION



UNIT - W 1315

STUDIO

Internal living Area
477.91 sq.ft.

Outdoor Living Area
111.61 sq.ft.

Total Living Area
589.53 sq.ft.

DISCLAIMER:

All measurements are indicative and for marketing purposes only. All efforts have been made to ensure their accuracy, however these layouts are subject to change at the discretion of the developer and should not be relied upon as final. The actual area may vary from the stated area and the developer reserves the right to make any revisions / alterations, at its absolute discretion, without any liability whatsoever.



UNIT - W 1316

STUDIO

Internal living Area
508.22 sq.ft.

Outdoor Living Area
146.11 sq.ft.

Total Living Area
654.32 sq.ft.

DISCLAIMER:

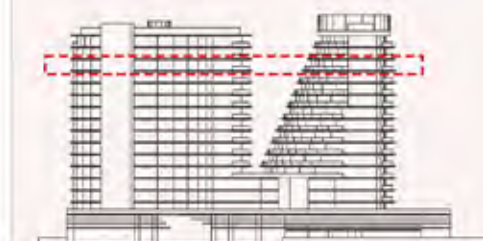
All measurements are indicative and for marketing purposes only. All efforts have been made to ensure their accuracy, however these layouts are subject to change at the discretion of the developer and should not be relied upon as final. The actual area may vary from the stated area and the developer reserves the right to make any revisions / alterations, at its absolute discretion, without any liability whatsoever.



KEY PLAN



KEY ELEVATION



UNIT - W 1317

1 BEDROOM

Internal living Area
885.41 sq.ft.

Outdoor Living Area
700.66 sq.ft.

Total Living Area
1586.07 sq.ft.

DISCLAIMER:

All measurements are indicative and for marketing purposes only. All efforts have been made to ensure their accuracy, however these layouts are subject to change at the discretion of the developer and should not be relied upon as final. The actual area may vary from the stated area and the developer reserves the right to make any revisions / alterations, at its absolute discretion, without any liability whatsoever.



KEY PLAN



KEY ELEVATION

