



THE BEACH RESIDENCES

AT AL MARJAN ISLAND

Townhouses Floor Plans



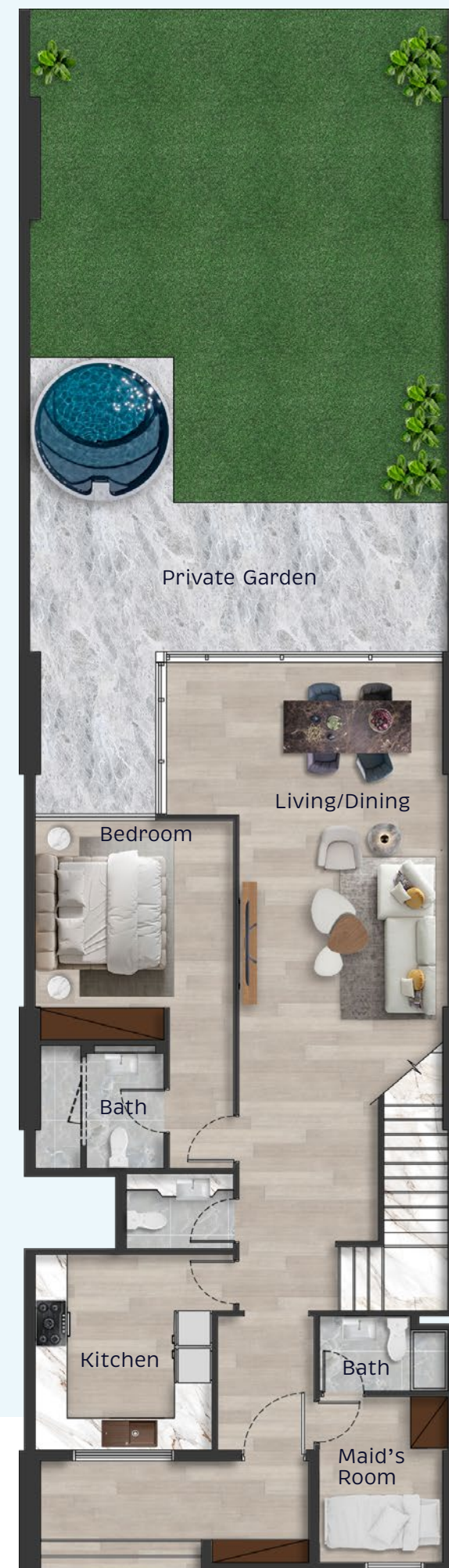
RANGE
RAS AL KHAIMAH

3 Bedroom + Maid

Unit TH01 – Ground Floor

- Internal Living Area: 2173.45 ft²
- Outdoor Living Area: 1116.11 ft²
- Balcony Area: 121.20 ft²
- Total Living Area: 3410.76 ft²

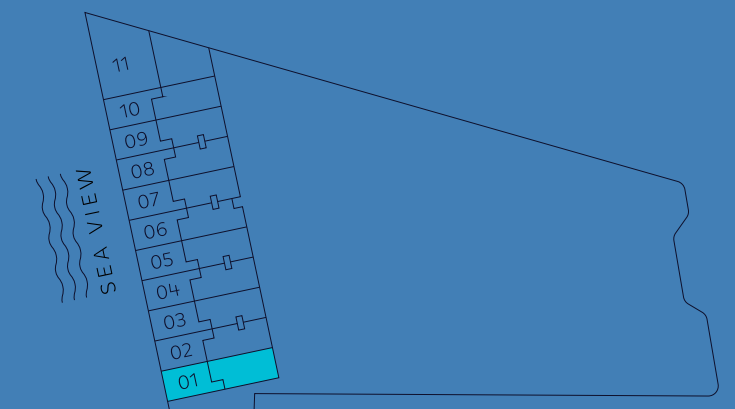
Lower Floor



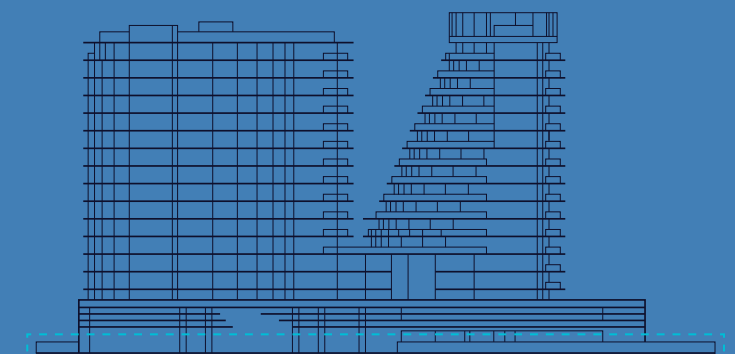
Upper Floor



Key Plan



Key Elevation



3 Bedroom + Maid

Unit TH02 – Ground Floor

- Internal Living Area: 2144.06 ft²
- Outdoor Living Area: 1103.19 ft²
- Balcony Area: 121.20 ft²
- Total Living Area: 3368.46 ft²

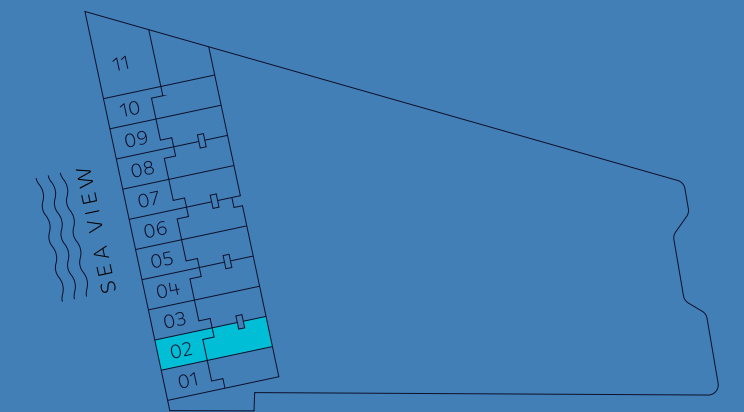
Lower Floor



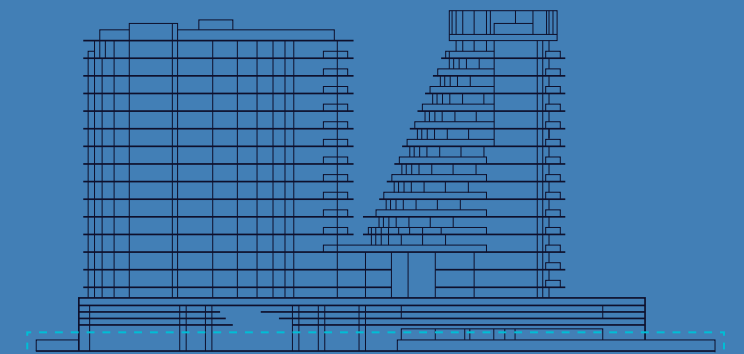
Upper Floor



Key Plan



Key Elevation

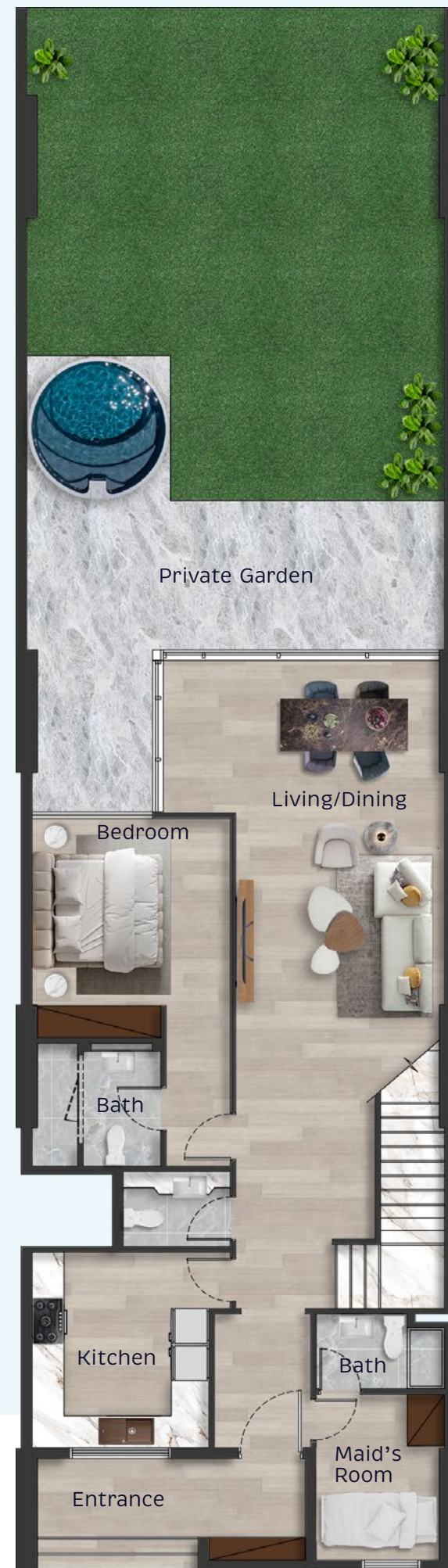


3 Bedroom + Maid

Unit TH03 – Ground Floor

- Internal Living Area: 2144.06 ft²
- Outdoor Living Area: 1103.09 ft²
- Balcony Area: 121.20 ft²
- Total Living Area: 3368.35 ft²

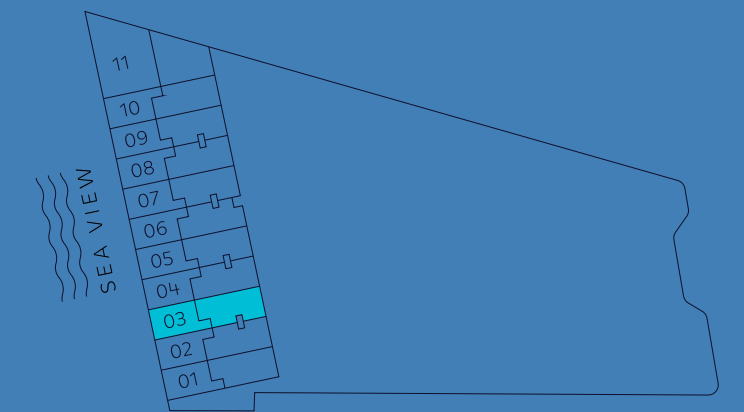
Lower Floor



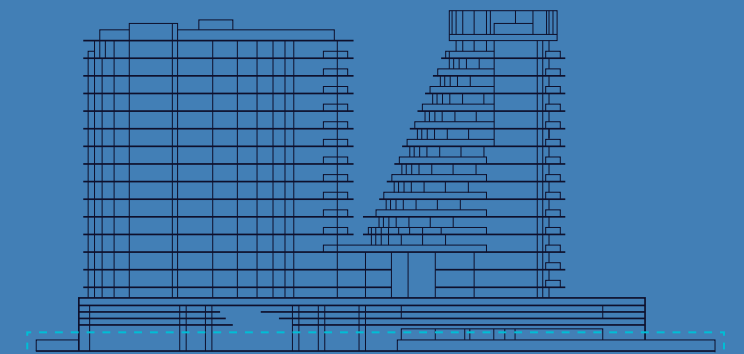
Upper Floor



Key Plan



Key Elevation



3 Bedroom + Maid

Unit TH04 – Ground Floor

- Internal Living Area: 2144.06 ft²
- Outdoor Living Area: 1103.19 ft²
- Balcony Area: 121.20 ft²
- Total Living Area: 3368.46 ft²

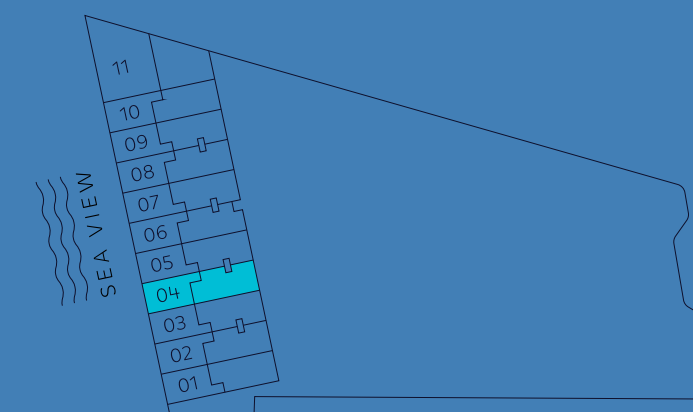
Lower Floor



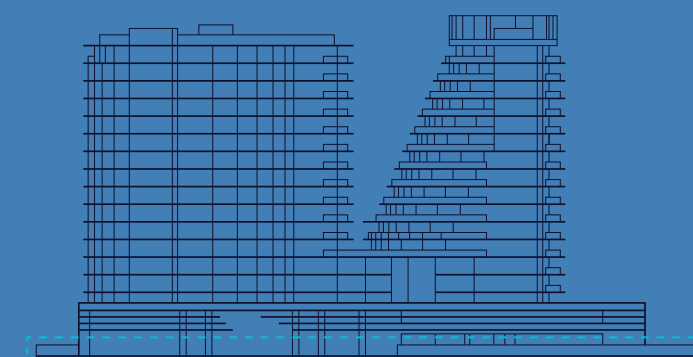
Upper Floor



Key Plan



Key Elevation



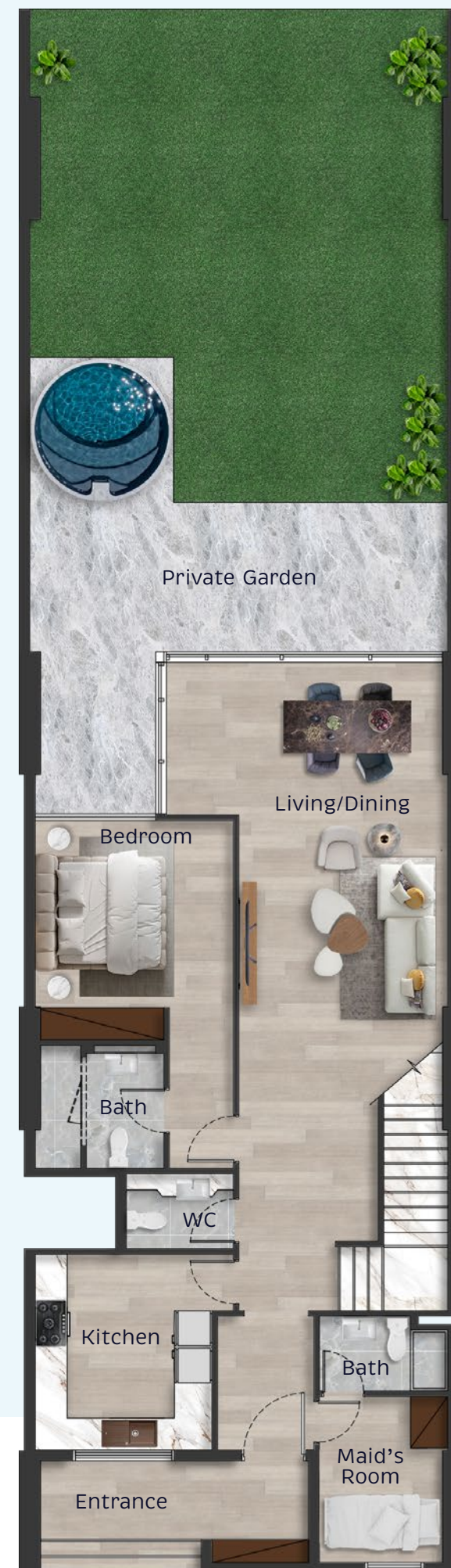
Disclaimer: All measurements are indicative and are for marketing purposes only. All efforts have been made to ensure their accuracy, however these layouts are subject to change at the discretion of the developer and should not be relied upon as final. The actual area may vary from the stated area and the developer reserves the right to make the revisions/alterations, at its absolute discretion, without any liability whatsoever.

3 Bedroom + Maid

Unit TH05 – Ground Floor

- Internal Living Area: 2144.06 ft²
- Outdoor Living Area: 1103.19 ft²
- Balcony Area: 121.20 ft²
- Total Living Area: 3368.46 ft²

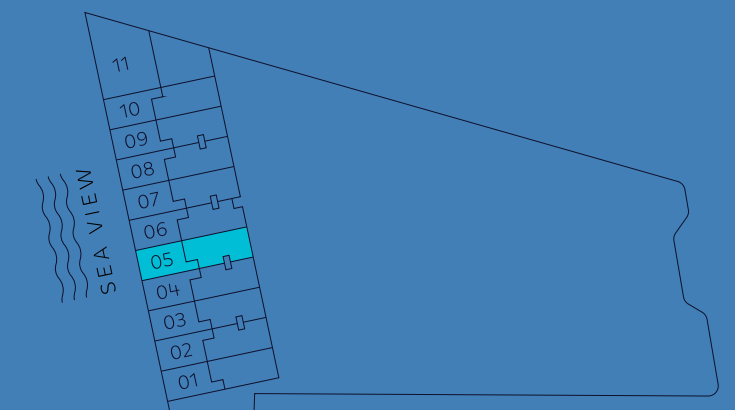
Lower Floor



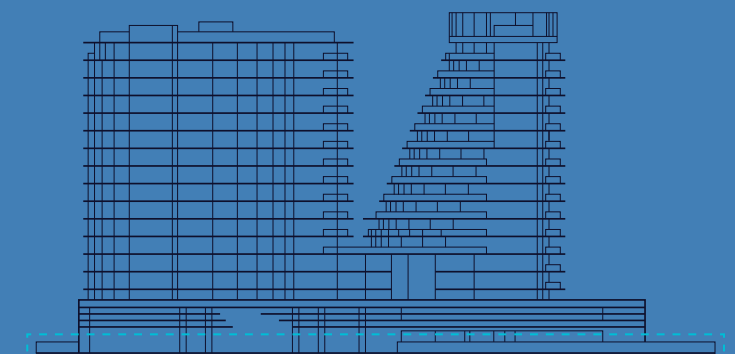
Upper Floor



Key Plan



Key Elevation



3 Bedroom + Maid

Unit TH06 – Ground Floor

- Internal Living Area: 2085.18 ft²
- Outdoor Living Area: 1103.19 ft²
- Balcony Area: 121.20 ft²
- Total Living Area: 3309.58 ft²

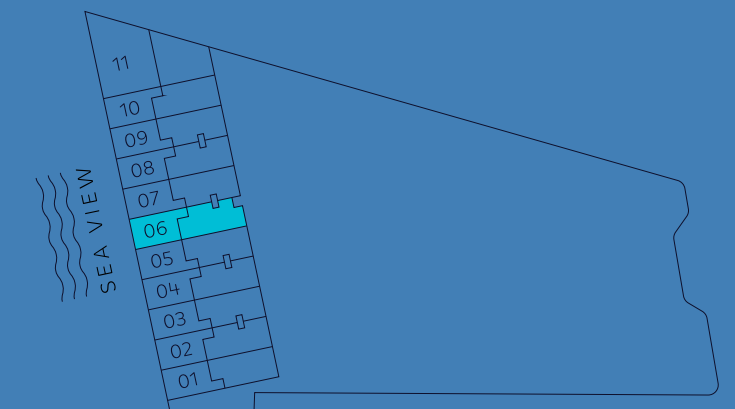
Lower Floor



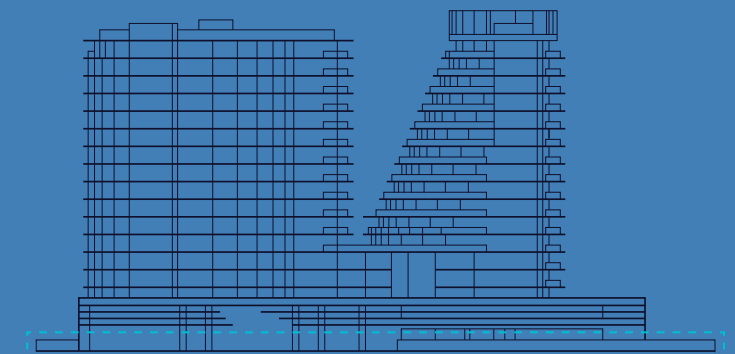
Upper Floor



Key Plan



Key Elevation



Disclaimer: All measurements are indicative and are for marketing purposes only. All efforts have been made to ensure their accuracy, however these layouts are subject to change at the discretion of the developer and should not be relied upon as final. The actual area may vary from the stated area and the developer reserves the right to make the revisions/alterations, at its absolute discretion, without any liability whatsoever.

3 Bedroom + Maid

Unit TH07 – Ground Floor

- Internal Living Area: 2148.15 ft²
- Outdoor Living Area: 1103.09 ft²
- Balcony Area: 121.20 ft²
- Total Living Area: 3372.44 ft²

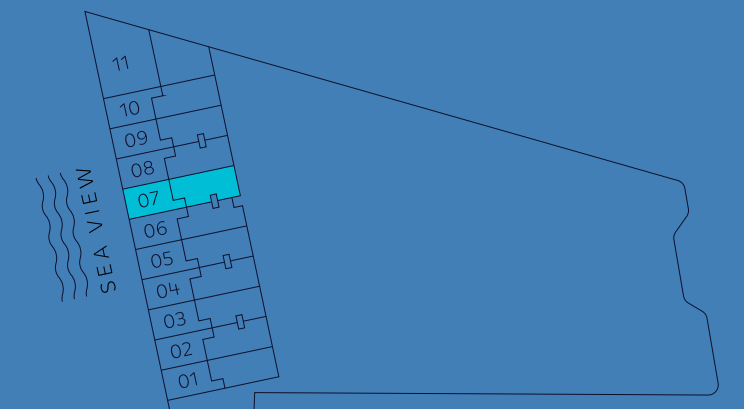
Lower Floor



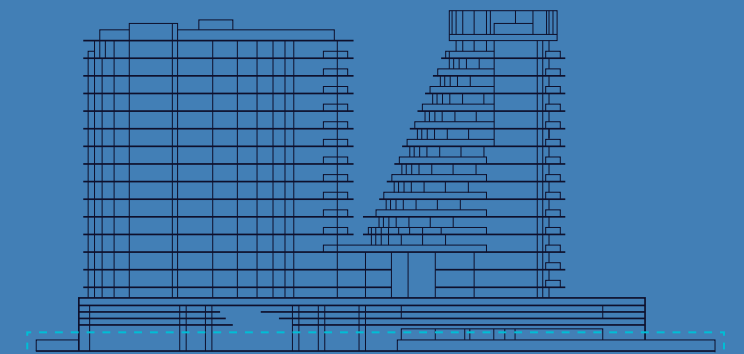
Upper Floor



Key Plan



Key Elevation



Disclaimer: All measurements are indicative and are for marketing purposes only. All efforts have been made to ensure their accuracy, however these layouts are subject to change at the discretion of the developer and should not be relied upon as final. The actual area may vary from the stated area and the developer reserves the right to make the revisions/alterations, at its absolute discretion, without any liability whatsoever.

3 Bedroom + Maid

Unit TH08 – Ground Floor

- Internal Living Area: 2141.80 ft²
- Outdoor Living Area: 1103.19 ft²
- Balcony Area: 120.99 ft²
- Total Living Area: 3365.98 ft²

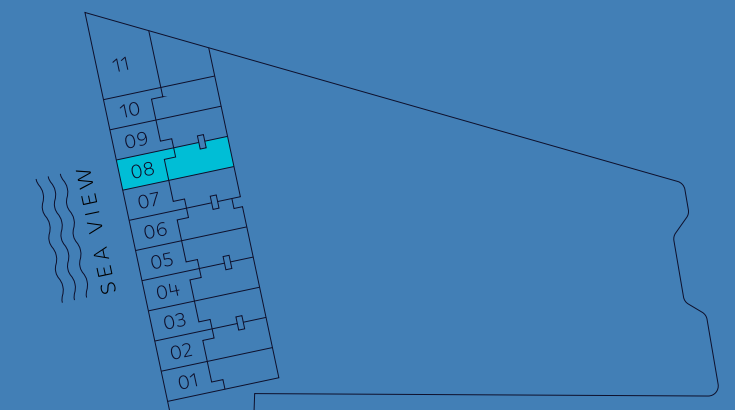
Lower Floor



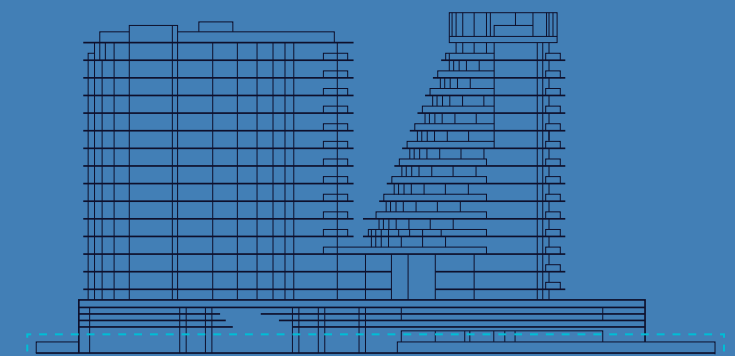
Upper Floor



Key Plan



Key Elevation



Disclaimer: All measurements are indicative and are for marketing purposes only. All efforts have been made to ensure their accuracy, however these layouts are subject to change at the discretion of the developer and should not be relied upon as final. The actual area may vary from the stated area and the developer reserves the right to make the revisions/alterations, at its absolute discretion, without any liability whatsoever.

3 Bedroom + Maid

Unit TH09 – Ground Floor

- Internal Living Area: 2143.74 ft²
- Outdoor Living Area: 1103.19 ft²
- Balcony Area: 121.09 ft²
- Total Living Area: 3368.03 ft²

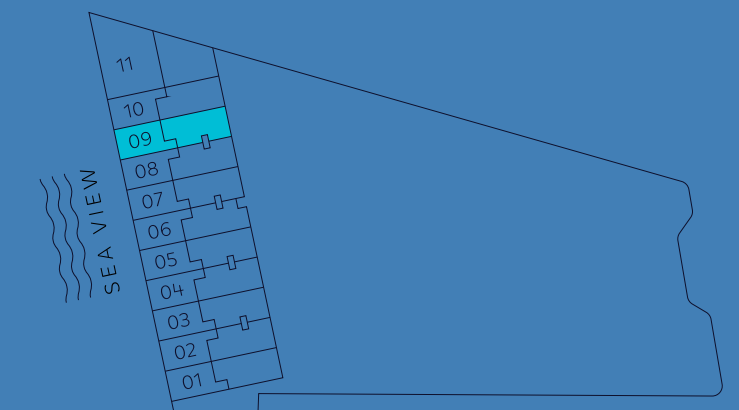
Lower Floor



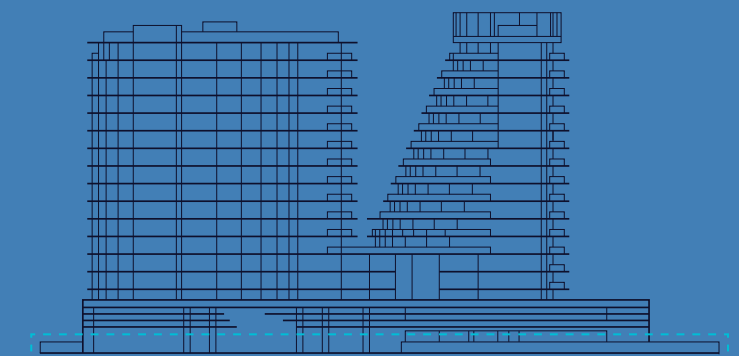
Upper Floor



Key Plan



Key Elevation



Disclaimer: All measurements are indicative and are for marketing purposes only. All efforts have been made to ensure their accuracy, however these layouts are subject to change at the discretion of the developer and should not be relied upon as final. The actual area may vary from the stated area and the developer reserves the right to make the revisions/alterations, at its absolute discretion, without any liability whatsoever.

3 Bedroom + Maid

Unit TH10 – Ground Floor

- Internal Living Area: 2170.65 ft²
- Outdoor Living Area: 1103.09 ft²
- Balcony Area: 121.20 ft²
- Total Living Area: 3394.94 ft²

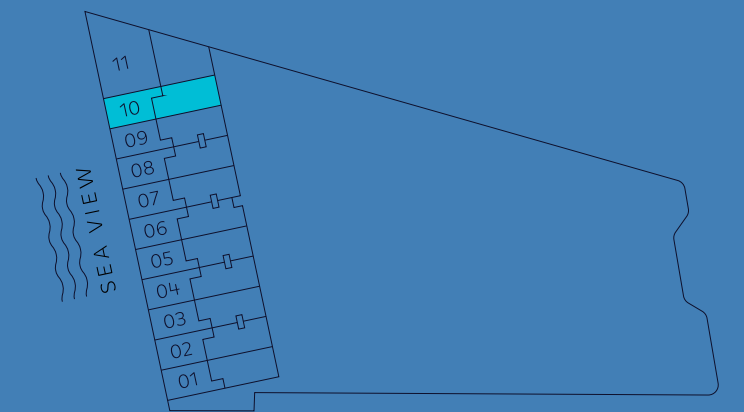
Lower Floor



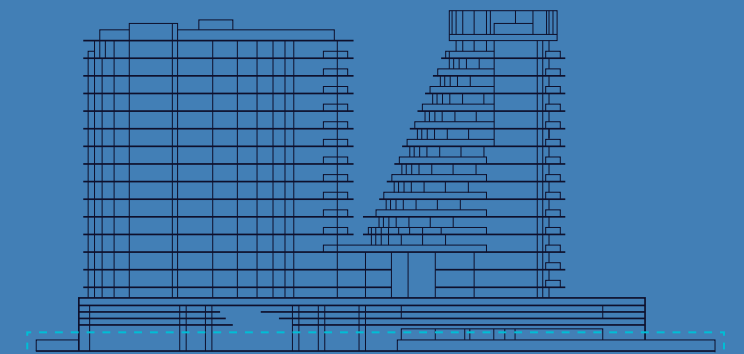
Upper Floor



Key Plan



Key Elevation



Disclaimer: All measurements are indicative and are for marketing purposes only. All efforts have been made to ensure their accuracy, however these layouts are subject to change at the discretion of the developer and should not be relied upon as final. The actual area may vary from the stated area and the developer reserves the right to make the revisions/alterations, at its absolute discretion, without any liability whatsoever.

5 Bedroom + Maid

Unit TH11 – Ground Floor

- Internal Living Area: 3330.35 ft²
- Outdoor Living Area: 3074.28 ft²
- Balcony Area: 121.20 ft²
- Total Living Area: 6525.84 ft²

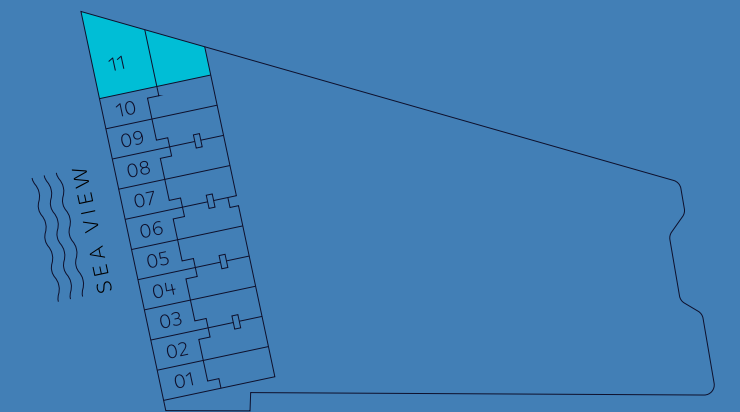
Lower Floor



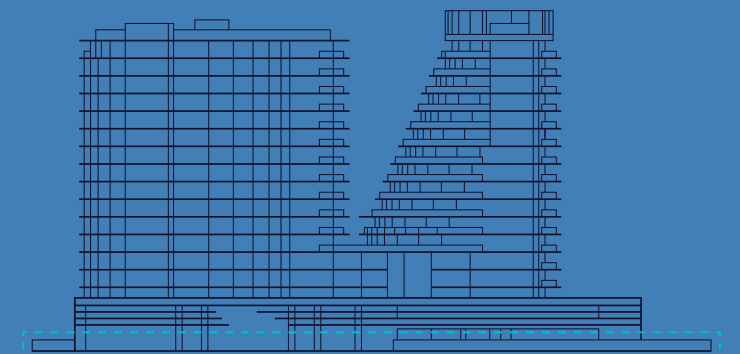
Upper Floor



Key Plan



Key Elevation





To learn more, or to arrange a meeting with one of our dedicated agents,
please telephone +971 4 325 3447, or email info@rangerak.ae

