



THE BEACH RESIDENCES

AT AL MARJAN ISLAND

FLOOR PLANS

By



RANGE
RAS AL KHAIMAH





THE BEACH RESIDENCES
AT AL MARJAN ISLAND



RANGE
RAS AL KHAIMAH

WEST WING FLOOR 12

UNIT - W 1201

1 BEDROOM

Internal living Area
853.14 sq.ft.

Outdoor Living Area
112.05 sq.ft.

Total Living Area
965.18 sq.ft.

DISCLAIMER:

All measurements are indicative and for marketing purposes only. All efforts have been made to ensure their accuracy, however these layouts are subject to change at the discretion of the developer and should not be relied upon as final. The actual area may vary from the stated area and the developer reserves the right to make any revisions / alterations, at its absolute discretion, without any liability whatsoever.



UNIT - W 1202

STUDIO

Internal living Area
522.70 sq.ft.

Outdoor Living Area
142.89 sq.ft.

Total Living Area
665.58 sq.ft.

DISCLAIMER:

All measurements are indicative and for marketing purposes only. All efforts have been made to ensure their accuracy, however these layouts are subject to change at the discretion of the developer and should not be relied upon as final. The actual area may vary from the stated area and the developer reserves the right to make any revisions / alterations, at its absolute discretion, without any liability whatsoever.



UNIT - W 1203

1 BEDROOM

Internal living Area
898.72 sq.ft.

Outdoor Living Area
305.13 sq.ft.

Total Living Area
1203.85 sq.ft.

DISCLAIMER:

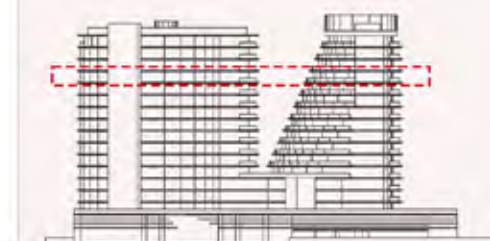
All measurements are indicative and for marketing purposes only. All efforts have been made to ensure their accuracy, however these layouts are subject to change at the discretion of the developer and should not be relied upon as final. The actual area may vary from the stated area and the developer reserves the right to make any revisions / alterations, at its absolute discretion, without any liability whatsoever.



KEY PLAN



KEY ELEVATION



UNIT - W 1204

STUDIO

Internal living Area
486.13 sq.ft.

Outdoor Living Area
156.36 sq.ft.

Total Living Area
642.48 sq.ft.

DISCLAIMER:

All measurements are indicative and for marketing purposes only. All efforts have been made to ensure their accuracy, however these layouts are subject to change at the discretion of the developer and should not be relied upon as final. The actual area may vary from the stated area and the developer reserves the right to make any revisions / alterations, at its absolute discretion, without any liability whatsoever.



UNIT - W 1205

STUDIO

Internal living Area
526.30 sq.ft.

Outdoor Living Area
160.15 sq.ft.

Total Living Area
686.45 sq.ft.

DISCLAIMER:

All measurements are indicative and for marketing purposes only. All efforts have been made to ensure their accuracy, however these layouts are subject to change at the discretion of the developer and should not be relied upon as final. The actual area may vary from the stated area and the developer reserves the right to make any revisions / alterations, at its absolute discretion, without any liability whatsoever.



UNIT - W 1206

STUDIO

Internal living Area
498.91 sq.ft.

Outdoor Living Area
137.70 sq.ft.

Total Living Area
636.61 sq.ft.

DISCLAIMER:

All measurements are indicative and for marketing purposes only. All efforts have been made to ensure their accuracy, however these layouts are subject to change at the discretion of the developer and should not be relied upon as final. The actual area may vary from the stated area and the developer reserves the right to make any revisions / alterations, at its absolute discretion, without any liability whatsoever.



UNIT - W 1207

STUDIO

Internal living Area
508.46 sq.ft.

Outdoor Living Area
112.58 sq.ft.

Total Living Area
621.04 sq.ft.

DISCLAIMER:

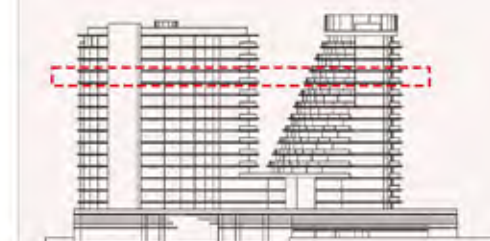
All measurements are indicative and for marketing purposes only. All efforts have been made to ensure their accuracy, however these layouts are subject to change at the discretion of the developer and should not be relied upon as final. The actual area may vary from the stated area and the developer reserves the right to make any revisions / alterations, at its absolute discretion, without any liability whatsoever.



KEY PLAN



KEY ELEVATION



UNIT - W 1208

2 BEDROOM

Internal living Area
1533.64 sq.ft.

Outdoor Living Area
681.68 sq.ft.

Total Living Area
2215.32 sq.ft.

DISCLAIMER:

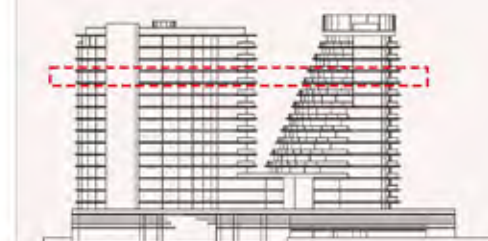
All measurements are indicative and for marketing purposes only. All efforts have been made to ensure their accuracy, however these layouts are subject to change at the discretion of the developer and should not be relied upon as final. The actual area may vary from the stated area and the developer reserves the right to make any revisions / alterations, at its absolute discretion, without any liability whatsoever.



KEY PLAN



KEY ELEVATION



UNIT - W 1209

STUDIO

Internal living Area
451.60 sq.ft.

Outdoor Living Area
143.31 sq.ft.

Total Living Area
594.91 sq.ft.

DISCLAIMER:

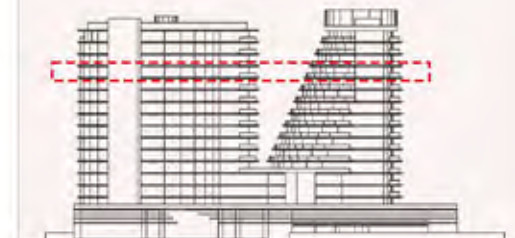
All measurements are indicative and for marketing purposes only. All efforts have been made to ensure their accuracy, however these layouts are subject to change at the discretion of the developer and should not be relied upon as final. The actual area may vary from the stated area and the developer reserves the right to make any revisions / alterations, at its absolute discretion, without any liability whatsoever.



KEY PLAN



KEY ELEVATION



UNIT - W 1210

STUDIO

Internal living Area
483.28 sq.ft.

Outdoor Living Area
124.53 sq.ft.

Total Living Area
607.81 sq.ft.

DISCLAIMER:

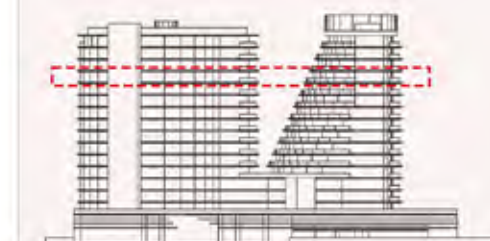
All measurements are indicative and for marketing purposes only. All efforts have been made to ensure their accuracy, however these layouts are subject to change at the discretion of the developer and should not be relied upon as final. The actual area may vary from the stated area and the developer reserves the right to make any revisions / alterations, at its absolute discretion, without any liability whatsoever.



KEY PLAN



KEY ELEVATION



UNIT - W 1211

STUDIO

Internal living Area
502.65 sq.ft.

Outdoor Living Area
130.55 sq.ft.

Total Living Area
633.20 sq.ft.

DISCLAIMER:

All measurements are indicative and for marketing purposes only. All efforts have been made to ensure their accuracy, however these layouts are subject to change at the discretion of the developer and should not be relied upon as final. The actual area may vary from the stated area and the developer reserves the right to make any revisions / alterations, at its absolute discretion, without any liability whatsoever.



UNIT - W 1212

STUDIO

Internal living Area
525.68 sq.ft.

Outdoor Living Area
152.88 sq.ft.

Total Living Area
678.57 sq.ft.

DISCLAIMER:

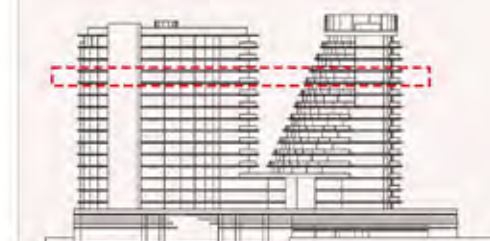
All measurements are indicative and for marketing purposes only. All efforts have been made to ensure their accuracy, however these layouts are subject to change at the discretion of the developer and should not be relied upon as final. The actual area may vary from the stated area and the developer reserves the right to make any revisions / alterations, at its absolute discretion, without any liability whatsoever.



KEY PLAN



KEY ELEVATION



UNIT - W 1213

1 BEDROOM

Internal living Area
903.76 sq.ft.

Outdoor Living Area
323.73 sq.ft.

Total Living Area
1227.49 sq.ft.

DISCLAIMER:

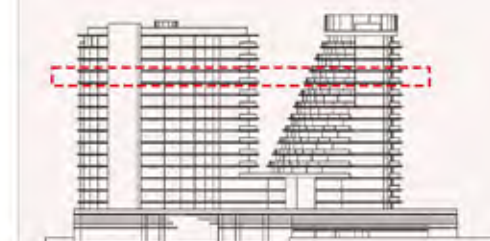
All measurements are indicative and for marketing purposes only. All efforts have been made to ensure their accuracy, however these layouts are subject to change at the discretion of the developer and should not be relied upon as final. The actual area may vary from the stated area and the developer reserves the right to make any revisions / alterations, at its absolute discretion, without any liability whatsoever.



KEY PLAN



KEY ELEVATION



UNIT - W 1214

STUDIO

Internal living Area
513.92 sq.ft.

Outdoor Living Area
126.42 sq.ft.

Total Living Area
640.33 sq.ft.

DISCLAIMER:

All measurements are indicative and for marketing purposes only. All efforts have been made to ensure their accuracy, however these layouts are subject to change at the discretion of the developer and should not be relied upon as final. The actual area may vary from the stated area and the developer reserves the right to make any revisions / alterations, at its absolute discretion, without any liability whatsoever.



UNIT - W 1215

STUDIO

Internal living Area
477.77 sq.ft.

Outdoor Living Area
112.55 sq.ft.

Total Living Area
590.32 sq.ft.

DISCLAIMER:

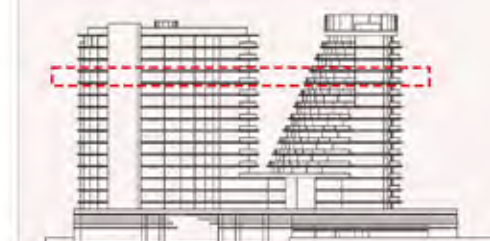
All measurements are indicative and for marketing purposes only. All efforts have been made to ensure their accuracy, however these layouts are subject to change at the discretion of the developer and should not be relied upon as final. The actual area may vary from the stated area and the developer reserves the right to make any revisions / alterations, at its absolute discretion, without any liability whatsoever.



KEY PLAN



KEY ELEVATION



UNIT - W 1216

STUDIO

Internal living Area
520.31 sq.ft.

Outdoor Living Area
166.95 sq.ft.

Total Living Area
687.27 sq.ft.

DISCLAIMER:

All measurements are indicative and for marketing purposes only. All efforts have been made to ensure their accuracy, however these layouts are subject to change at the discretion of the developer and should not be relied upon as final. The actual area may vary from the stated area and the developer reserves the right to make any revisions / alterations, at its absolute discretion, without any liability whatsoever.



UNIT - W 1217

STUDIO

Internal living Area
477.48 sq.ft.

Outdoor Living Area
159.83 sq.ft.

Total Living Area
637.31 sq.ft.

DISCLAIMER:

All measurements are indicative and for marketing purposes only. All efforts have been made to ensure their accuracy, however these layouts are subject to change at the discretion of the developer and should not be relied upon as final. The actual area may vary from the stated area and the developer reserves the right to make any revisions / alterations, at its absolute discretion, without any liability whatsoever.



UNIT - W 1218

STUDIO

Internal living Area
579.16 sq.ft.

Outdoor Living Area
578.58 sq.ft.

Total Living Area
1157.74 sq.ft.

DISCLAIMER:

All measurements are indicative and for marketing purposes only. All efforts have been made to ensure their accuracy, however these layouts are subject to change at the discretion of the developer and should not be relied upon as final. The actual area may vary from the stated area and the developer reserves the right to make any revisions / alterations, at its absolute discretion, without any liability whatsoever.



KEY PLAN



KEY ELEVATION

